



**HAL**  
open science

## Temperature response of parameters of a biochemically based model of photosynthesis. II. A review of experimental data

B.E. Medlyn, Erwin Dreyer, D. Ellsworth, M. Forstreuter, P.C. Harley, M.U.F. Kirschbaum, Xavier Le Roux, Pierre Montpied, J. Strassmeyer, A. Walcroft, et al.

### ► To cite this version:

B.E. Medlyn, Erwin Dreyer, D. Ellsworth, M. Forstreuter, P.C. Harley, et al.. Temperature response of parameters of a biochemically based model of photosynthesis. II. A review of experimental data. *Plant, Cell and Environment*, 2002, 25 (9), pp.1167-1179. 10.1046/j.1365-3040.2002.00891.x . hal-01189628

**HAL Id: hal-01189628**

**<https://hal.science/hal-01189628>**

Submitted on 31 May 2020

**HAL** is a multi-disciplinary open access archive for the deposit and dissemination of scientific research documents, whether they are published or not. The documents may come from teaching and research institutions in France or abroad, or from public or private research centers.

L'archive ouverte pluridisciplinaire **HAL**, est destinée au dépôt et à la diffusion de documents scientifiques de niveau recherche, publiés ou non, émanant des établissements d'enseignement et de recherche français ou étrangers, des laboratoires publics ou privés.

# Temperature response of parameters of a biochemically based model of photosynthesis. II. A review of experimental data

B. E. MEDLYN<sup>1,2</sup>, E. DREYER<sup>3</sup>, D. ELLSWORTH<sup>4</sup>, M. FORSTREUTER<sup>5</sup>, P. C. HARLEY<sup>6</sup>, M. U. F. KIRSCHBAUM<sup>7</sup>, X. LE ROUX<sup>8,9</sup>, P. MONTPIED<sup>3</sup>, J. STRASSEMEYER<sup>5</sup>, A. WALCROFT<sup>8,10</sup>, K. WANG<sup>11</sup> & D. LOUSTAU<sup>1</sup>

<sup>1</sup>INRA Pierroton, Laboratoire d'Ecophysiologie et Nutrition, 33611 Gazinet Cedex, France, <sup>2</sup>School of Biological, Earth and Environmental Science, University of NSW, Sydney 2052, Australia, <sup>3</sup>UMR INRA UHP, Ecologie et Ecophysiologie Forestières, 54280 Champenoux, France, <sup>4</sup>School of Natural Resources and Environment, University of Michigan, Ann Arbor, MI 48109, USA, <sup>5</sup>Institut für Ökologie, Technische Universität Berlin, Königin-Luise-Str.22, D-100 Berlin 33, Germany, <sup>6</sup>Atmospheric Chemistry Division, NCAR, Boulder, CO 80307–3000, USA, <sup>7</sup>CSIRO Forestry and Forest Products, PO Box E4008, Kingston ACT 2604, Australia, <sup>8</sup>UMR PIAF (INRA/University Blaise Pascal), 234 avenue du Brezet, 63039 Clermont Ferrand, France, <sup>9</sup>UMR 5557 Ecologie Microbienne, 43 bd du 11 novembre 1918, 69622 Villeurbanne, France, <sup>10</sup>Manaaki Whenua – Landcare Research, Private Bag 11 052, Palmerston North, New Zealand and <sup>11</sup>Faculty of Forestry, University of Joensuu, PO Box 111, Joensuu, Finland

## ABSTRACT

The temperature dependence of C<sub>3</sub> photosynthesis is known to vary with growth environment and with species. In an attempt to quantify this variability, a commonly used biochemically based photosynthesis model was parameterized from 19 gas exchange studies on tree and crop species. The parameter values obtained described the shape and amplitude of the temperature responses of the maximum rate of Rubisco activity ( $V_{\text{cmax}}$ ) and the potential rate of electron transport ( $J_{\text{max}}$ ). Original data sets were used for this review, as it is shown that derived values of  $V_{\text{cmax}}$  and its temperature response depend strongly on assumptions made in derivation. Values of  $J_{\text{max}}$  and  $V_{\text{cmax}}$  at 25 °C varied considerably among species but were strongly correlated, with an average  $J_{\text{max}} : V_{\text{cmax}}$  ratio of 1.67. Two species grown in cold climates, however, had lower ratios. In all studies, the  $J_{\text{max}} : V_{\text{cmax}}$  ratio declined strongly with measurement temperature. The relative temperature responses of  $J_{\text{max}}$  and  $V_{\text{cmax}}$  were relatively constant among tree species. Activation energies averaged 50 kJ mol<sup>-1</sup> for  $J_{\text{max}}$  and 65 kJ mol<sup>-1</sup> for  $V_{\text{cmax}}$ , and for most species temperature optima averaged 33 °C for  $J_{\text{max}}$  and 40 °C for  $V_{\text{cmax}}$ . However, the cold climate tree species had low temperature optima for both  $J_{\text{max}}$  (19 °C) and  $V_{\text{cmax}}$  (29 °C), suggesting acclimation of both processes to growth temperature. Crop species had somewhat different temperature responses, with higher activation energies for both  $J_{\text{max}}$  and  $V_{\text{cmax}}$ , implying narrower peaks in the temperature response for these species. The results thus suggest that both growth environment and

plant type can influence the photosynthetic response to temperature. Based on these results, several suggestions are made to improve modelling of temperature responses.

*Key-words:* electron transport; model parameters; photosynthesis; ribulose-1,5-bisphosphate carboxylase-oxygenase; ribulose-1,5-bisphosphate regeneration; temperature acclimation.

## INTRODUCTION

Many of the models used to study effects of global change on plant function and growth incorporate the Farquhar, von Caemmerer & Berry (1980) model of C<sub>3</sub> photosynthesis (e.g. Cramer *et al.* 2001). This model is particularly useful in this context because it represents mechanistically the effects of elevated atmospheric [CO<sub>2</sub>], a major factor in global change, on photosynthesis. The model has two major parameters, the potential rate of electron transport ( $J_{\text{max}}$ ) and the maximum rate of ribulose-1,5-bisphosphate carboxylase-oxygenase (Rubisco) activity ( $V_{\text{cmax}}$ ). There is now a large database of values of  $J_{\text{max}}$  and  $V_{\text{cmax}}$  (Wullschlegel 1993) and the effects of elevated [CO<sub>2</sub>] on these parameters (Medlyn *et al.* 1999). The model also has the potential to accurately represent the effects of elevated temperature, a second major factor in global change that directly affects plant growth. However, as many modellers are aware, there is a dearth of information regarding the temperature responses of  $J_{\text{max}}$  and  $V_{\text{cmax}}$  (Leuning 1997).

We know that these temperature responses are likely to vary, because the temperature response of photosynthesis itself varies with genotype and environmental conditions, and may acclimate to changes in growth temperature (Slatyer & Morrow 1977; Berry & Björkman 1980). To date, however, there has been a fairly limited number of studies

Correspondence: Belinda E. Medlyn, School of Biological, Earth and Environmental Science, University of New South Wales, UNSW Sydney 2052, Australia. Fax: +61 (0)29385 1558; e-mail: B.Medlyn@unsw.edu.au

examining temperature responses in the context of the Farquhar model (Leuning 1997). The limited amount of information available can result in possibly inappropriate parameter choices. The database of temperature responses of model parameters has the potential to expand in the near future, given recent improvements in temperature control in commercially available gas exchange systems. However, there is a second obstacle to identifying variation in these responses between species, which is that parameter values obtained from data can differ according to the method used to derive them, as is shown below. Direct comparison of parameter values between different studies can therefore be misleading. Wullschleger (1993) solved this problem when compiling a database of  $J_{\max}$  and  $V_{\max}$  by deriving all parameter values himself directly from  $A-C_i$  curves, thus ensuring consistency between parameters.

The aim of this study was to improve modelling of photosynthetic temperature responses by compiling and comparing existing information on the temperature response of the parameters of the Farquhar *et al.* (1980) model of photosynthesis. Few studies have compared variation of these parameters among species, so a broad understanding of temperature responses and their relationship to species characteristics and growth environment is lacking. We adopted the approach of Wullschleger (1993), using consistent methods to derive model parameters from the original data sets. Some 19 data sets were obtained. In order to draw some generalizations from these data sets, we attempted to link variation in the parameters between data sets to ecological factors such as functional type and growth environment.

## METHODS

### Data

Estimates of the parameters  $J_{\max}$  and  $V_{\max}$  may be obtained in several ways including gas exchange (Kirschbaum & Farquhar 1984; Harley, Tenhunen & Lange 1986), *in vitro* methods (Badger & Collatz 1977; Armond, Schreiber & Björkman 1978) or chlorophyll fluorescence (Niinemets, Oja & Kull 1999). In order to ensure that responses were comparable, we chose only to include gas exchange data. In this method, values of  $J_{\max}$  and  $V_{\max}$  are obtained from the response of photosynthesis under high light ( $A$ ) to intercellular  $\text{CO}_2$  ( $C_i$ ). A family of  $A-C_i$  curves at different temperatures will thus give the temperature response of the two parameters  $J_{\max}$  and  $V_{\max}$ . Obtaining such a family of curves is very time-consuming and hence several authors have attempted to estimate the temperature responses of  $J_{\max}$  and  $V_{\max}$  using reduced data sets (e.g. Hikosaka, Murakami & Hirose 1999; Wohlfahrt *et al.* 1999). We attempted to include some of these studies here, but we found that such shortcuts considerably reduced the accuracy of the parameter values, and therefore decided against their inclusion.

We required the original  $A-C_i$  curves from each study, for reasons illustrated below. However, in two cases the

original data were no longer available (Kirschbaum & Farquhar 1984; Harley *et al.* 1992). Temperature responses from these two studies have been extensively used in modelling, so we thought it important to include them in the comparison. Therefore, in these two cases, typical  $A-C_i$  curves were reconstructed from reported parameter values and the model was re-fitted to these curves. Statistical information on parameters obtained in this way is necessarily missing. Details of all data sets used are given in Table 1.

In most cases, temperature responses were obtained by applying temperature control to leaves for the duration of the gas exchange measurements. In contrast, in the experiments carried out by Dreyer *et al.* (2001) and Robakowski, Montpied & Dreyer (2002) (Table 1), temperature changes were applied to the whole seedlings for the night preceding the measurements. This procedure could potentially have modified the temperature response, as there is evidence that the thermal properties of photosystem II (PSII) and of electron transport may begin to acclimate after even a few hours at a given temperature (e.g. Havaux 1993). The results presented below, however, do not appear to indicate any difference between the experiments carried out by this group and other experiments.

## Model

### Overview of the Farquhar *et al.* (1980) model of photosynthesis

Farquhar *et al.* (1980) proposed that net leaf photosynthesis,  $A_n$ , could be modelled as the minimum of two limiting rates:

$$A_n = \min(A_c, A_j) - R_d \quad (1)$$

$A_c$  is the rate of photosynthesis when Rubisco activity is limiting and  $A_j$  the rate when ribulose-1,5-bisphosphate (RuBP)-regeneration is limiting.  $R_d$  is the rate of mitochondrial respiration. Rubisco-limited photosynthesis is given by:

$$A_c = \frac{V_{\max}(C_i - \Gamma^*)}{\left[ C_i + K_c \left( 1 + \frac{O_i}{K_o} \right) \right]} \quad (2)$$

where  $V_{\max}$  is the maximum rate of Rubisco activity,  $C_i$  and  $O_i$  are the intercellular concentrations of  $\text{CO}_2$  and  $\text{O}_2$ , respectively,  $K_c$  and  $K_o$  are the Michaelis-Menten coefficients of Rubisco activity for  $\text{CO}_2$  and  $\text{O}_2$ , respectively, and  $\Gamma^*$  is the  $\text{CO}_2$  compensation point in the absence of mitochondrial respiration. This formulation of the model assumes that the cell-wall conductance, the conductance between the intercellular space and the site of carboxylation, is negligible. Some authors have argued that this conductance is significant and may vary with leaf temperature (e.g. Makino, Nakano & Mae 1994). For most species considered here, we did not have access to appropriate data to evaluate the cell-wall conductance and hence were obliged to use the form of the model given above.

Table 1. Details of experimental data sets used

Species	Common name	Author	Measurement <i>T</i>	Plants	Points	Growth <i>T</i>	Growth conditions	Age of plants	Notes
<b>Crops</b>									
<i>Glycine max</i>	Soybean	Harley, Weber & Gates (1985)	20,25,30,35,40	3	48	25	GH – T	seedlings	O <sub>2</sub> varied also
<i>Gossypium hirsutum</i>	Cotton	Harley <i>et al.</i> (1992)	18,26,29,35	2		29	GH – T	seedlings	Raw data unavailable
<b>Deciduous trees</b>									
<i>Acer pseudoplatanus</i>	Sycamore	Dreyer <i>et al.</i> (2001)	10,18,25,32,36,40	5	28	16	N (France)	seedlings	
<i>Betula pendula</i>	Silver birch	Wang (unpub.)	5,10,22,26,32	4	20	14	OTC (Finland)	seedlings	
<i>Betula pendula</i>	Silver birch	Dreyer <i>et al.</i> (2001)	10,18,25,32,40	5	25	17	N (France)	seedlings	
<i>Fagus sylvatica</i>	Common beech	Dreyer <i>et al.</i> (2001)	10,18,25,32,40	5	25	17	N (France)	seedlings	
<i>Fagus sylvatica</i>	Common beech	Strassemeyer & Forstreuter (1997)	19,23,26,30,35	7	28	20	ME (Germany)	seedlings	
<i>Fraxinus excelsior</i>	Ash	Dreyer <i>et al.</i> (2001)	10,18,25,32,36,40	5	30	16	N (France)	seedlings	
<i>Juglans regia</i>	Walnut	Dreyer <i>et al.</i> (2001)	10,18,25,32,40	5	25	17	N (France)	seedlings	
<i>Prunus persica</i>	Peach	Walcroft <i>et al.</i> (2002)	10,20,25,32,37	5	19	19	GH (France)	2 year	
<i>Quercus petraea</i>	Sessile oak	Dreyer <i>et al.</i> (2001)	10,18,25,32,36,40	5	25	16	N (France)	seedlings	
<i>Quercus robur</i>	English oak	Dreyer <i>et al.</i> (2001)	10,18,25,32,36,40	5	30	16	N (France)	seedlings	
<i>Quercus robur</i>	English oak	Strassemeyer & Forstreuter (unpub.)	15,21,26,30,36	8	29	20	ME (Germany)	seedlings	
<b>Evergreen trees</b>									
<i>Abies alba</i>	Silver fir	Robakowski <i>et al.</i> (2002)	10,18,26,32,36,40	5	28	25	N (France)	seedlings	
<i>Eucalyptus pauciflora</i>	Snowgum	Kirschbaum & Farquhar (1984)	15–35	1		20	GH – T	seedlings	Raw data unavailable
<i>Pinus pinaster</i>	Maritime pine	Medlyn <i>et al.</i> (2002)	15,20,25,30,35	6	27	24	field (France)	30 year	Local provenance, August
<i>Pinus radiata</i>	Radiata pine	Walcroft <i>et al.</i> (1997)	8,15,20,25,30	3	14	24	GH (NZ)	seedlings	Two fertilization treatments
<i>Pinus sylvestris</i>	Scots pine	Wang, Kellomaki & Laitinen (1996)	6,11,21,26,31	4	18	14	OTC (Finland)	20–25 year	
<i>Pinus taeda</i>	Loblolly pine	Ellsworth & Klimas (submitted)	15,28,35	5	14	24	FACE (N. Carolina)	12 year	June and August combined

Points is the total number of data points used. Growth *T* is the mean temperature in the month preceding the measurements. Growth conditions: GH, greenhouse; GH – T, temperature-controlled greenhouse; N, nursery; OTC, open-top chamber (control treatment); ME, mini-ecosystem (control treatment); FACE, free-air CO<sub>2</sub> exchange (control ring).

The rate of photosynthesis when RuBP regeneration is limiting is given by:

$$A_j = \left(\frac{J}{4}\right) \times \frac{(C_i - \Gamma^*)}{(C_i + 2\Gamma^*)} \quad (3)$$

where  $J$  is the rate of electron transport.  $J$  is related to incident photosynthetically active photon flux density,  $Q$ , by:

$$\theta J^2 - (\alpha Q + J_{\max})J + \alpha Q J_{\max} = 0 \quad (4)$$

where  $J_{\max}$  is the potential rate of electron transport,  $\theta$  is the curvature of the light response curve and  $\alpha$  is the quantum yield of electron transport. The value of  $\alpha$  was fixed at 0.3 mol electrons mol<sup>-1</sup> photon, based on an average C<sub>3</sub> photosynthetic quantum yield of 0.093 and a leaf absorptance of 0.8 (Long, Postl & Bolharnordenkamp 1993). The value of  $\theta$  was taken to be 0.90. These parameter values have only a slight effect on the estimated value of  $J_{\max}$ .

The key parameters of the model, which vary among species, are  $J_{\max}$  and  $V_{\max}$ . It is the temperature dependences of these parameters that we set out to examine. In addition, it is known that the parameters  $K_c$ ,  $K_o$  and  $\Gamma^*$  vary with temperature. These parameters, by contrast, are thought to be intrinsic properties of the Rubisco enzyme and are generally assumed constant among species, thereby minimizing the number of parameters to be fitted (Harley *et al.* 1986).

#### *T-dependence of $K_c$ , $K_o$ , and $\Gamma^*$*

The *in-vivo* temperature dependence of the Michaelis-Menten coefficients of Rubisco,  $K_c$  ( $\mu\text{mol mol}^{-1}$ ) and  $K_o$  ( $\text{mmol mol}^{-1}$ ), was recently measured in transgenic tobacco over the temperature range 10–40 °C (Bernacchi *et al.* 2001) and the following relationships obtained:

$$K_c = 404.9 \exp\left[\frac{79430(T_k - 298)}{(298RT_k)}\right] \quad (5)$$

$$K_o = 278.4 \exp\left[\frac{36380(T_k - 298)}{(298RT_k)}\right] \quad (6)$$

$T_k$  denotes leaf temperature in K and  $R$  is the universal gas constant (8.314 J mol<sup>-1</sup> K<sup>-1</sup>). Previous parameterizations of the photosynthesis model have been based on *in vitro* determinations of these functions, carried out by Badger & Collatz (1977) and Jordan & Ogren (1984), which are given here for comparison. Badger & Collatz (1977) determined carboxylase and oxygenase activities over the temperature range 5–35 °C of Rubisco purified from leaves of *Atriplex glabriscula*. They obtained the following relations (as given in Farquhar *et al.* 1980):

$$K_c = 460 \exp\left[\frac{59536(T_k - 298)}{(298RT_k)}\right] \quad (T > 15^\circ\text{C}) \quad (7)$$

$$= 920 \exp\left[\frac{109700(T_k - 298)}{(298RT_k)}\right] \quad (T < 15^\circ\text{C}) \quad (8)$$

$$K_o = 330 \exp\left[\frac{35948(T_k - 298)}{(298RT_k)}\right] \quad (9)$$

Jordan & Ogren (1984), working with Rubisco purified from spinach over the temperature range 5–40 °C, obtained the following relationships (equations derived by Harley & Baldocchi 1995):

$$K_c = 274.6 \exp\left[\frac{80500(T_k - 298)}{(298RT_k)}\right] \quad (10)$$

$$K_o = 419.8 \exp\left[\frac{14500(T_k - 298)}{(298RT_k)}\right] \quad (11)$$

Figure 1a illustrates the temperature dependence of the effective Michaelis-Menten coefficient for CO<sub>2</sub>,  $K_m = K_c(1 + O_i/K_o)$ , at an intercellular O<sub>2</sub> concentration of 210 mmol mol<sup>-1</sup>, using each of these three sets of equations.

Similarly, the temperature dependence of the CO<sub>2</sub> compensation point,  $\Gamma^*$  ( $\mu\text{mol mol}^{-1}$ ), was estimated by Bernacchi *et al.* (2001) to be:

$$\Gamma^* = 42.75 \exp\left[\frac{37830(T_k - 298)}{(298RT_k)}\right] \quad (12)$$

Alternative expressions of the temperature dependence of the CO<sub>2</sub> compensation point,  $\Gamma^*$ , are generally based on the work of either Badger and colleagues (Badger & Andrews 1974, Badger & Collatz 1977), Jordan & Ogren (1984) or Brooks & Farquhar (1985). These three alternative temperature dependences are illustrated in Fig. 1b. The CO<sub>2</sub> compensation point is related to  $K_c$  and  $K_o$  and to the maximum oxygenation activity of Rubisco,  $V_{\max}$  (Farquhar *et al.* 1980):

$$\Gamma^* = \frac{K_c V_{\max} O_i}{(2K_o V_{\max})} \quad (13)$$

Badger & Andrews (1974) observed that the ratio  $V_{\max}/V_{\text{cmax}} = 0.21$ , independent of temperature, allowing the temperature dependence of  $\Gamma^*$  to be determined from that of  $K_c$  and  $K_o$ . Jordan & Ogren (1984) studied the CO<sub>2</sub> specificity factor  $\tau = K_c V_{\max}/(K_o V_{\text{cmax}})$  of Rubisco purified from spinach and obtained (equation derived by Harley *et al.* 1992):

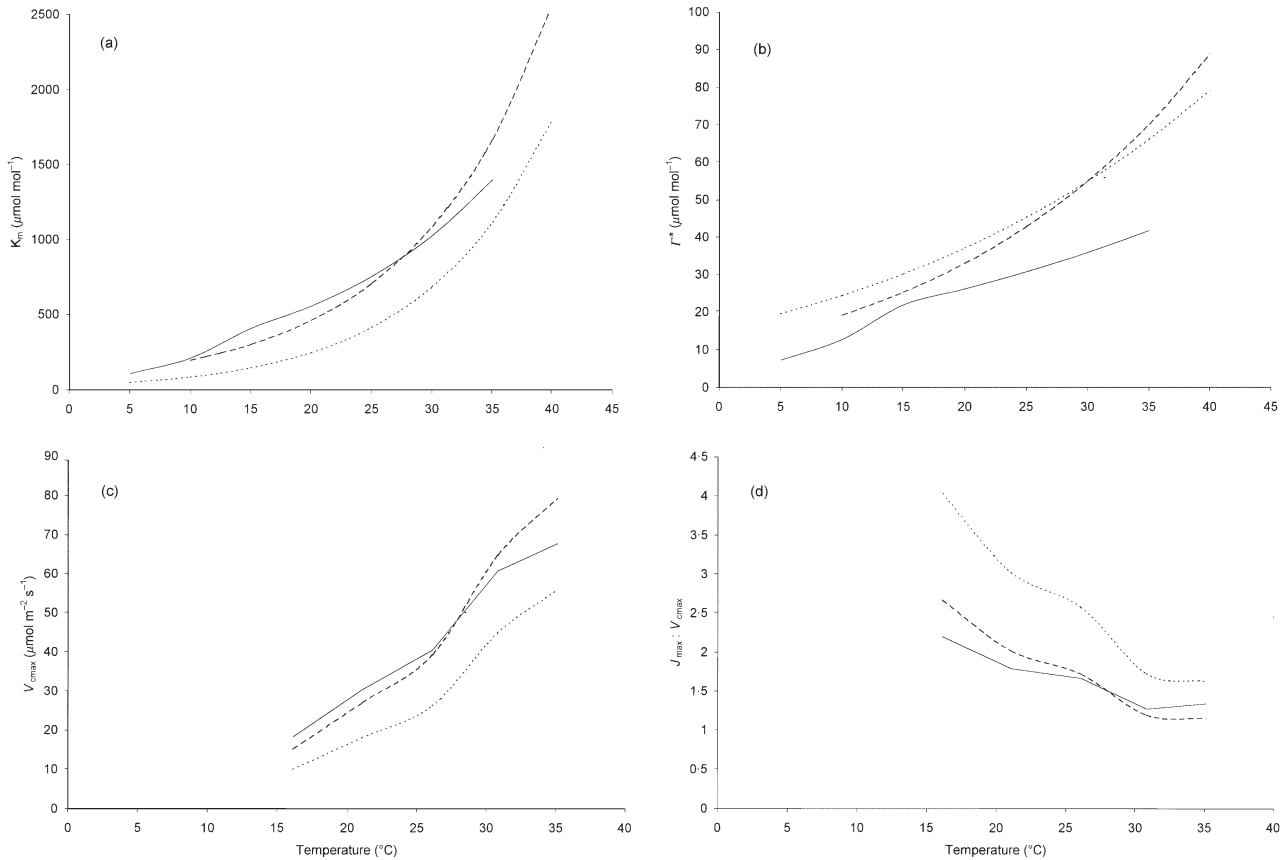
$$\tau = 2.321 \exp\left[-\frac{29000(T_k - 298)}{(298RT_k)}\right] \quad (14)$$

Brooks & Farquhar (1985) estimated the CO<sub>2</sub> compensation point of spinach *in vivo* using a gas-exchange technique and obtained the following relation, valid over the range 15–30 °C:

$$\Gamma^* = 42.7 + 1.68(T_k - 298) + 0.0012(T_k - 298)^2 \quad (15)$$

They report that this relationship closely resembles that obtained by Jordan & Ogren (1984).

We explored the significance of the differences between these alternative formulations when fitting the parameters  $J_{\max}$  and  $V_{\text{cmax}}$ . We found that the parameter  $J_{\max}$  was only very slightly sensitive to the formulation of either  $K_m$  or  $\Gamma^*$  (not shown). However, the parameter  $V_{\text{cmax}}$  was highly sensitive to the formulation of  $K_m$  chosen (Fig. 1c). The ratio of  $J_{\max} \cdot V_{\text{cmax}}$  was thus also highly sensitive to  $K_m$  (Fig. 1d). This sensitivity is the reason why we considered it necessary to



**Figure 1.** (a) Alternative forms for the response of  $K_m = K_c(1 + O_i/K_o)$  to leaf temperature. (b) Alternative forms for the response of  $\Gamma^*$  to leaf temperature. (c) Response of  $V_{cmax}$  to leaf temperature obtained by fitting a sample data set using alternative forms for  $K_m$ . (d) Response of ratio  $J_{max} : V_{cmax}$  to leaf temperature obtained by fitting a sample data set using alternative forms for  $K_m$ . Key: Solid line: data from Badger & Collatz (1977). Dotted line: data from Jordan & Ogren (1984). Dashed line: data from Bernacchi *et al.* (2001).

use a consistent method to derive all parameters in a consistent fashion from original  $A-C_i$  curves before comparing the temperature responses.

In the current work, we chose to use the temperature functions obtained by Bernacchi *et al.* (2001), because these functions were measured *in vivo*, without disturbance of the leaf, and are hence more likely to reflect accurately activity within the leaf. When using the temperature dependences of  $J_{max}$  and  $V_{cmax}$  presented below, it is important to also use the Bernacchi *et al.* (2001) temperature dependences for  $K_c$ ,  $K_o$  and  $\Gamma^*$ , because of the sensitivity of the model to these functions illustrated in Fig. 1.

#### *T*-dependence of $J_{max}$ and $V_{cmax}$

On reviewing the literature, it is daunting to observe the number of alternative functions that have been used to model the temperature dependences of  $J_{max}$  and  $V_{cmax}$  (compare, for example, Harley *et al.* 1986; Long 1991; Harley *et al.* 1992; Harley & Baldocchi 1995; Lloyd *et al.* 1995). However, all these equations are actually just alternative expressions of two basic functions. The first is the Arrhenius function:

$$f(T_k) = k_{25} \exp\left[\frac{E_a(T_k - 298)}{(298RT_k)}\right] \quad (16)$$

which has parameters  $k_{25}$  (the value at 25 °C) and  $E_a$  (the exponential rate of rise of the function). The second is a peaked function (Johnson, Eyring & Williams 1942), which is essentially the Arrhenius equation (Eqn 16) modified by a term that describes how conformational changes in the enzyme at higher temperatures start to negate the on-going benefits that would otherwise come from further increasing temperature. This equation can be written in two equivalent forms:

$$f(T_k) = k_{25} \exp\left[\frac{E_a(T_k - 298)}{(298RT_k)}\right] \frac{1 + \exp\left(\frac{298\Delta S - H_d}{298R}\right)}{1 + \exp\left(\frac{T_k\Delta S - H_d}{T_kR}\right)} \quad (17)$$

$$\text{or } f(T_k) = k_{opt} \frac{H_d \exp\left(\frac{H_a(T_k - T_{opt})}{T_kRT_{opt}}\right)}{H_d - H_a \left(1 - \exp\left(\frac{H_d(T_k - T_{opt})}{T_kRT_{opt}}\right)\right)} \quad (18)$$

The first form has parameters  $k_{25}$ ,  $H_a$ ,  $H_d$  and  $\Delta S$ , whereas the second form has parameters  $k_{opt}$ ,  $H_a$ ,  $H_d$  and  $T_{opt}$ .  $H_a$  and  $H_d$  are the same between the two forms, whereas  $\Delta S$  and  $T_{opt}$  are related by:

$$T_{opt} = \frac{H_d}{\Delta S - R \ln \left[ \frac{H_a}{(H_d - H_a)} \right]} \quad (19)$$

The parameters can be interpreted as follows:  $k_{25}$  and  $k_{opt}$  are the values of  $J_{max}$  or  $V_{cmax}$  at temperatures 25 °C and  $T_{opt}$ , respectively;  $H_a$  gives the rate of exponential increase of the function below the optimum (and is analogous to parameter  $E_a$  in the Arrhenius function);  $H_d$  describes the rate of decrease of the function above the optimum; and  $T_{opt}$  is the optimum temperature.  $\Delta S$  is known as an entropy factor but is not readily interpreted.

### Model fitting

The first step in fitting the model was to obtain a value of  $J_{max}$  and  $V_{cmax}$  for each individual  $A-C_i$  curve. This step was carried out by fitting Eqns 1, 2, 3 and 4 to each curve using the non-linear regression routine with Gaussian algorithm in SAS (SAS Institute Inc., Cary, NC, USA). The parameter  $R_d$  was also fitted but was not used further, because this parameter was found to be poorly estimated by the model.

Temperature response parameters were then obtained by fitting Eqns 16, 17 and 18 to response curves of  $J_{max}$  and  $V_{cmax}$  to leaf temperature, using SigmaPlot (SPSS Inc. Chicago, IL, USA). It was assumed that  $J_{max}$  and  $V_{cmax}$  at a given temperature could vary between leaves (according to factors such as leaf nitrogen per unit area) but that relative temperature responses of the parameters would be constant. This assumption was incorporated in the model by introducing dummy variables  $l_i$  to represent each leaf and putting:

$$k = \sum_i l_i k_i \quad (20)$$

in Eqns 16, 17 and 18 (Kleinbaum *et al.* 1998). Here,  $l_i = 1$  for leaf  $i$  and 0 otherwise, and  $k_i$  is the value of  $k_{25}$  or  $k_{opt}$  for leaf  $i$ . Reported values of the parameters  $k_{25}$  and  $k_{opt}$  are mean and standard deviation of values of  $k_i$ .

The Arrhenius model is a subset of the peaked model (compare Eqns 16 and 17). Therefore, an  $F$ -test was used to determine whether the peaked model gave a significantly better fit to data than the Arrhenius model (Kleinbaum *et al.* 1998). As others have found, the four-parameter peaked model was often over-parameterized, i.e. there was insufficient data to determine all parameters (Harley *et al.* 1992; Dreyer *et al.* 2001). Hence, this model was also fitted under the assumption that  $H_d = 200 \text{ kJ mol}^{-1}$ , and an  $F$ -test used to determine whether  $H_d$  was significantly different from this value.

### Implied temperature response of photosynthesis

We wanted to identify the implications for photosynthesis of differences in the temperature responses of model

parameters. To do so, Eqns 1, 2, 3 and 4 were used to calculate a typical temperature response of net photosynthesis from the derived parameter values. This calculation was made by assuming standard ambient environmental conditions for light-saturated photosynthesis: an atmospheric  $[\text{CO}_2]$  concentration of  $350 \mu\text{mol mol}^{-1}$ , a constant  $C_i:C_a$  ratio of 0.7, and a value for  $J$  of  $0.9J_{max}$ . Leaf respiration was modelled for all species using a base rate of  $0.01 V_{cmax}$  and a  $Q_{10}$  of 2.

## RESULTS

### Temperature response of $V_{cmax}$

Fitted parameters of the temperature response of  $V_{cmax}$  are given in Table 2. In most cases, the peaked function (Eqn 17) with  $H_d$  fixed at  $200 \text{ kJ mol}^{-1}$  gave a significantly better fit to the data than the Arrhenius function (Eqn 16). In no case, however, did relaxing the constraint on  $H_d$  significantly improve the fit to the data. Species for which no peak in the temperature response of  $V_{cmax}$  was discernible were *Fraxinus excelsior*, *Prunus persica*, *Pinus taeda* and *Pinus radiata*. Note, however, that measurements on *P. radiata* did not go above 30 °C (Table 1), and that peak values close to 40 °C (maximal measurement temperature) are statistically difficult to estimate (e.g. for *F. excelsior*); in all cases a peak may well occur above the highest measurement temperature.

Values of  $k_{25}$ , the maximum rate of Rubisco activity at 25 °C, varied across data sets by a factor of three. Some of this variation is probably caused by variations in leaf nitrogen content between data sets. Values were highest for crop species, but were comparable for coniferous and deciduous species. Note that all rates are expressed on a one-sided leaf area basis.

The activation energy  $H_a$  was generally in the range 60–80  $\text{kJ mol}^{-1}$ , implying a similarity in the temperature responses of  $V_{cmax}$  across data sets. Two data sets had values of  $H_a$  slightly below this range (*F. excelsior* and fertilized *P. radiata*) whereas another two had values of  $H_a$  considerably above this range (*Gossypium hirsutum* and *Juglans regia*).

The optimum temperature for  $V_{cmax}$ ,  $T_{opt}$ , was undetermined for those experiments where the peaked function was not a significantly better fit than the Arrhenius function. Among the other experiments,  $T_{opt}$  was generally in the range 35–41 °C, with no clear pattern in the variation, with two exceptions. *Betula pendula* and *Pinus sylvestris*, grown in Finland, experienced the lowest growing temperatures and showed significantly lower values of  $T_{opt}$  (27–29 °C).

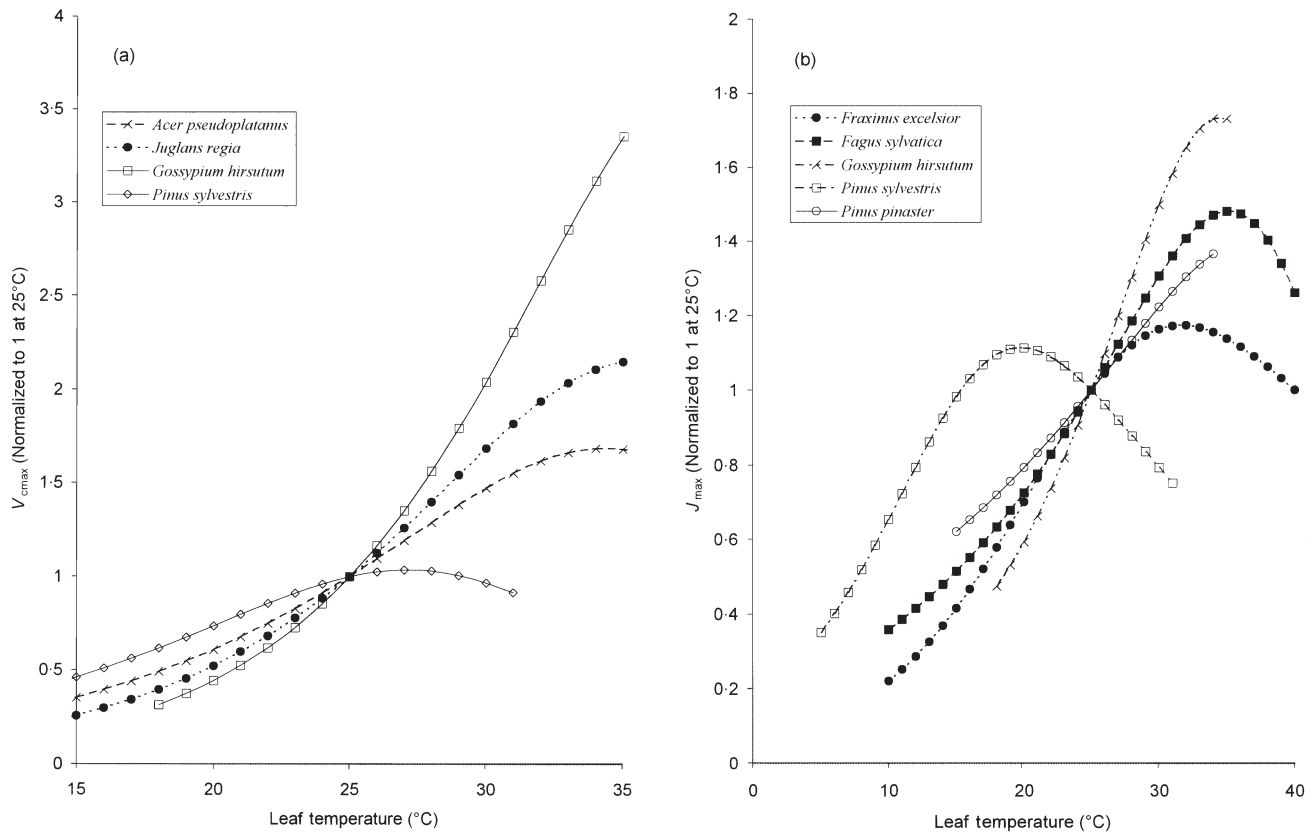
The variability in the temperature response of  $V_{cmax}$  is illustrated in Fig. 2a, which shows the temperature responses normalized to 1 at 25 °C. Most of the temperature responses lie between the two curves shown for *Juglans regia* and *Acer pseudoplatanus*. The exceptions are cotton, *Gossypium hirsutum*, which has a much steeper  $V_{cmax}$ -T response owing to its high value of  $H_a$ , and the

**Table 2.** Parameters of the temperature response of  $V_{\text{cmax}}$

Species	Arrhenius model			Peaked model			$r^2$	$T_{\text{opt}}$ (°C)	$H_D$ (kJ mol <sup>-1</sup> )	$r^2$	$P$
	$k_{25}$ (μmol m <sup>-2</sup> s <sup>-1</sup> )	$E_a$ (kJ mol <sup>-1</sup> )	$r^2$	$k_{25}$ (μmol m <sup>-2</sup> s <sup>-1</sup> )	$H_a$ (kJ mol <sup>-1</sup> )	$k_{\text{opt}}$ (μmol m <sup>-2</sup> s <sup>-1</sup> )					
<b>Crops</b>											
<i>Glycine max</i>	97.76 (9.15)	54.08 (3.86)	0.87	93.89 (8.34)	69.50 (24.37)	277.50 (24.66)	0.88	41.89 (9.92)	200.00	0.88	0.05
<i>Gossypium hirsutum</i>	91.48	93.59 (4.50)	1.00	90.22	116.38	399.26	1.00	40.60	200.00	1.00	
<b>Deciduous trees</b>											
<i>Acer pseudoplatanus</i>	72.96 (8.66)	33.92 (7.19)	0.66	78.16 (11.01)	75.88 (23.93)	136.28 (19.20)	0.86	34.95 (1.21)	200.00	0.86	0.00
<i>Betula pendula</i> OTC	85.07 (3.65)	37.19 (4.98)	0.87	101.90 (3.85)	63.75 (11.44)	114.82 (4.34)	0.97	29.28 (0.59)	200.00	0.97	0.00
<i>Betula pendula</i> GH	68.85 (14.19)	50.60 (3.86)	0.94	69.09 (14.72)	77.02 (18.76)	177.31 (37.78)	0.97	39.20 (3.76)	200.00	0.97	0.00
<i>Fagus sylvatica</i> GH	60.95 (5.48)	41.38 (4.31)	0.89	63.83 (5.17)	72.36 (15.34)	133.13 (10.78)	0.97	37.36 (0.87)	200.00	0.97	0.00
<i>Fagus sylvatica</i> ME	27.21 (3.41)	46.81 (3.53)	0.92	27.51 (2.93)	65.40 (19.48)	49.25 (5.24)	0.95	36.16 (3.63)	200.00	0.95	0.00
<i>Fraxinus excelsior</i>	77.97 (9.65)	50.61 (3.60)	0.93	78.43 (9.60)	54.58 (13.11)	235.89 (28.88)	0.93	45.52 (36.87)	200.00	0.93	0.47
<i>Juglans regia</i>	62.10 (10.24)	43.98 (6.21)	0.83	63.98 (10.62)	104.58 (23.56)	146.39 (24.30)	0.97	36.05 (0.45)	200.00	0.97	0.00
<i>Prunus persica</i>	65.50 (3.88)	73.74 (3.28)	0.99	66.16 (3.91)	75.14 (23.38)	464.59 (27.49)	0.99	50.86 (396.99)	200.00	0.99	1.00
<i>Quercus petraea</i>	79.50 (8.55)	56.28 (2.79)	0.98	79.11 (8.10)	67.72 (9.40)	244.53 (25.04)	0.99	42.77 (6.96)	200.00	0.99	0.01
<i>Quercus robur</i> GH	89.99 (11.98)	55.50 (3.45)	0.96	89.71 (11.92)	61.77 (13.57)	295.01 (39.19)	0.96	44.87 (25.44)	200.00	0.96	0.26
<i>Quercus robur</i> ME	40.83 (12.28)	46.26 (3.11)	0.97	42.32 (13.42)	57.59 (12.22)	84.97 (26.94)	0.97	38.76 (10.69)	200.00	0.97	0.06
<b>Evergreen trees</b>											
<i>Abies alba</i>	41.64 (5.15)	35.16 (3.97)	0.86	43.50 (5.33)	60.02 (9.88)	78.11 (9.56)	0.95	36.81 (0.65)	200.00	0.95	0.00
<i>Eucalyptus pauciflora</i>	87.73	51.56 (2.09)	0.99	90.42	60.79 (4.93)	175.81	1.00	37.83 (3.54)	200.00	1.00	
<i>Pinus pinaster</i>	89.98 (5.01)	62.22 (2.76)	0.99	92.42 (4.65)	74.16 (11.17)	213.30 (10.77)	0.99	38.34 (7.36)	200.00	0.99	0.01
<i>Pinus radiata</i> fert.	97.01 (4.46)	49.07 (3.73)	0.96	99.15 (4.71)	51.32 (19.21)	174.33 (8.33)	0.96	37.74 (152.04)	200.00	0.96	0.77
<i>Pinus radiata</i> unfert.	83.57 (17.5)	61.31 (3.71)	0.98	85.86 (17.7)	64.78 (21.32)	171.59 (35.81)	0.98	37.68 (125.99)	200.00	0.98	0.69
<i>Pinus sylvestris</i>	53.99 (7.22)	35.53 (5.93)	0.81	67.33 (9.72)	69.83 (12.56)	70.75 (10.21)	0.96	27.56 (0.61)	200.00	0.96	0.00
<i>Pinus taeda</i>	57.05 (9.33)	60.88 (3.68)	0.98	57.66 (9.43)	61.21 (304.11)	340.45 (55.63)	0.98	53.30 (47033)	200.00	0.98	1.00

Values of  $k_{25}$  and  $k_{\text{opt}}$  are expressed on a one-sided leaf area basis. Standard deviations of other parameters, are given in parentheses.  $P$ , probability that the peaked model is not a significantly better fit to the data than the Arrhenius model. OTC, open top chamber experiment; GH, greenhouse experiment; ME, mini-ecosystem experiment.





**Figure 2.** Sample responses of (a)  $V_{cmax}$  and (b)  $J_{max}$  to leaf temperature. Values are normalized to 1 at 25°C.

Finnish plants, *B. pendula* and *P. sylvestris*, which have a much lower optimal temperature for  $V_{cmax}$ .

### Temperature response of $J_{max}$

The peaked function (Eqn 17) described the temperature response of  $J_{max}$  significantly better than the Arrhenius function (Eqn 16) for all experiments other than *P. radiata* and *P. taeda*. Parameters for the peaked function are given in Table 3.

Values of the activation energy  $H_a$  were in general highest for crop species (80–90 kJ mol<sup>-1</sup>), intermediate for deciduous species (40–60 kJ mol<sup>-1</sup>) and lowest for coniferous species (30–40 kJ mol<sup>-1</sup>). The major exceptions to this pattern were again the cold-climate trees from Finland, *B. pendula* and *P. sylvestris*, which both had high values of  $H_a$ , and *F. excelsior*. Values of  $H_d$  were significantly less than 200 kJ mol<sup>-1</sup> for these three species and for soybean.

The optimal temperature for  $J_{max}$  is generally in the range 30–38°C, with no clear pattern among species, with the exception again of the Finnish plants. *Betula pendula* and *P. sylvestris* had much lower optimal temperatures for  $J_{max}$  of about 20°C.

The variability in the temperature response of  $J_{max}$  is illustrated in Fig. 2b. The two Finnish species have similar responses, with low optimal temperatures. The other conifers have responses resembling that of *P. pinaster*, with a

relatively low slope owing to low values of  $H_a$ . Deciduous tree responses generally lie between those of *F. excelsior* and *F. sylvatica*. Crop species responses are steeper again, as illustrated by the *G. hirsutum* response.

### Ratio of $J_{max} : V_{cmax}$

Figure 3 shows the relationship between values of  $J_{max}$  and  $V_{cmax}$  at 25°C. Most of the data points fall close to a straight line with a slope of 1.67. The major exceptions to this pattern are soybean, with a ratio of 2.4, and the two Finnish plants, which both have ratios of about 1. For each experiment, a linear function was fitted to the relationship between the  $J_{max} : V_{cmax}$  ratio and leaf temperature. There was a significant negative slope in all cases, ranging from –0.045 to –0.08, highlighting the difference in activation energies for  $J_{max}$  and  $V_{cmax}$ .

### Implications for the temperature response of light-saturated photosynthesis

The temperature response of photosynthesis was modelled for each data set, under the assumption of a constant  $C_i : C_a$  ratio. From the resulting curves, the optimal temperature for photosynthesis and its rate of increase over the range 15–30°C were calculated, and these are plotted in Figs 4 and 5 against growth temperature. Figure 4 illustrates that

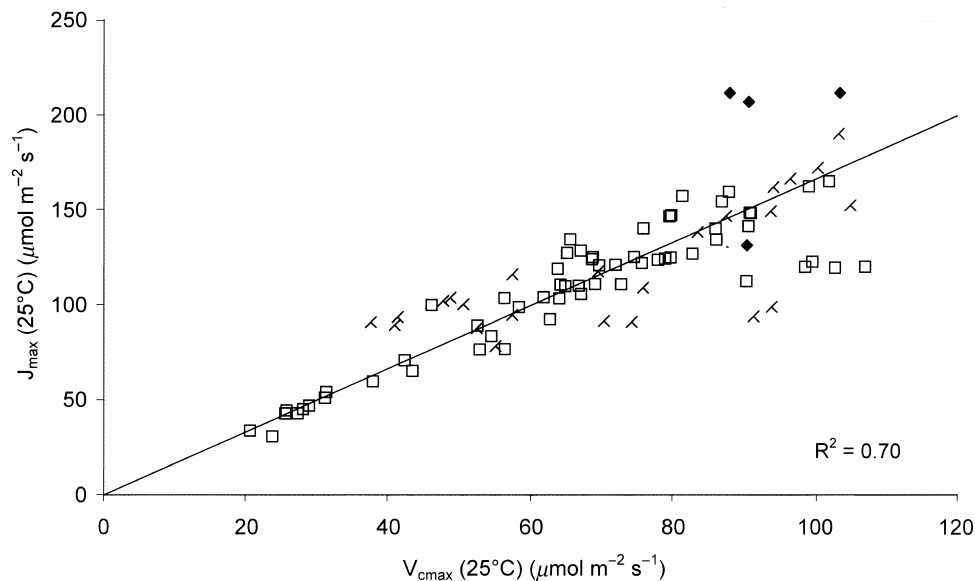
**Table 3.** Parameters of the temperature response of  $J_{\max}$ 

Species	$k_{25}(\mu\text{mol m}^{-2} \text{s}^{-1})$	$k_{\text{opt}}(\mu\text{mol m}^{-2} \text{s}^{-1})$	$H_a(\text{kJ mol}^{-1})$	$H_d(\text{kJ mol}^{-1})$	$T_{\text{opt}}(^{\circ}\text{C})$	$r^2$
<b>Crops</b>						
<i>Glycine max</i>	217.88 (2.89)	328.57 (4.35)	88.82 (36.57)	113.77 (10.78)	38.17 (2.33)	0.89
<i>Gossypium hirsutum</i>	131.82	221.57	77.17	200	34.44	1.00
<b>Deciduous trees</b>						
<i>Acer pseudoplatanus</i>	142.23 (12.37)	173.90 (15.12)	44.14 (10.02)	200	31.96 (1.16)	0.82
<i>Betula pendula</i> OTC	111.89 (1.48)	128.45 (1.70)	108.45 (18.29)	156.84 (12.60)	19.20 (0.70)	0.96
<i>Betula pendula</i> GH	116.33 (13.21)	169.66 (19.27)	42.83 (4.09)	200	35.77 (0.41)	0.98
<i>Fagus sylvatica</i> GH	97.91 (12.31)	173.18 (18.20)	48.09 (7.86)	200	35.24 (0.78)	0.95
<i>Fagus sylvatica</i> ME	44.83 (7.50)	51.89 (8.68)	43.36 (12.37)	200	30.78 (0.65)	0.94
<i>Fraxinus excelsior</i>	147.03 (18.51)	170.10 (21.42)	91.20 (15.20)	131.89 (7.58)	31.38 (0.62)	0.95
<i>Juglans regia</i>	103.81 (16.75)	165.86 (26.76)	56.30 (8.59)	200	35.53 (0.60)	0.97
<i>Prunus persica</i>	106.27 (7.83)	154.81 (11.41)	42.04 (8.73)	200	35.87 (1.56)	0.95
<i>Quercus petraea</i>	144.01 (12.02)	220.75 (18.43)	42.14 (2.99)	200	36.89 (0.34)	0.99
<i>Quercus robur</i> GH	139.59 (23.98)	212.90 (36.57)	36.92 (7.19)	200	37.91 (1.29)	0.92
<i>Quercus robur</i> ME	66.03 (20.18)	80.75 (24.68)	35.87 (13.52)	200	32.86 (1.19)	0.89
<b>Evergreen trees</b>						
<i>Abies alba</i>	95.49 (5.73)	128.15 (7.69)	50.82 (8.20)	200	33.20 (0.78)	0.90
<i>Eucalyptus pauciflora</i>	141.94	175.13	43.79	200	32.19	
<i>Pinus pinaster</i>	154.74 (10.80)	220.91 (15.40)	34.83 (9.24)	200	36.87 (9.34)	0.97
<i>Pinus radiata</i> fert.	175.43 (14.29)	189.66 (15.46)	43.18 (12.41)	200	29.01 (2.76)	0.95
<i>Pinus radiata</i> unfert.	136.57 (17.66)	145.99 (18.85)	44.14 (16.60)	200	28.63 (3.21)	0.92
<i>Pinus sylvestris</i>	70.77 (2.65)	78.36 (2.93)	100.28 (17.76)	147.92 (10.28)	19.89 (0.73)	0.96
<i>Pinus taeda</i>	98.54 (14.09)	155.76 (22.26)	37.87 (394.31)	200	38.48 (1213)	0.95

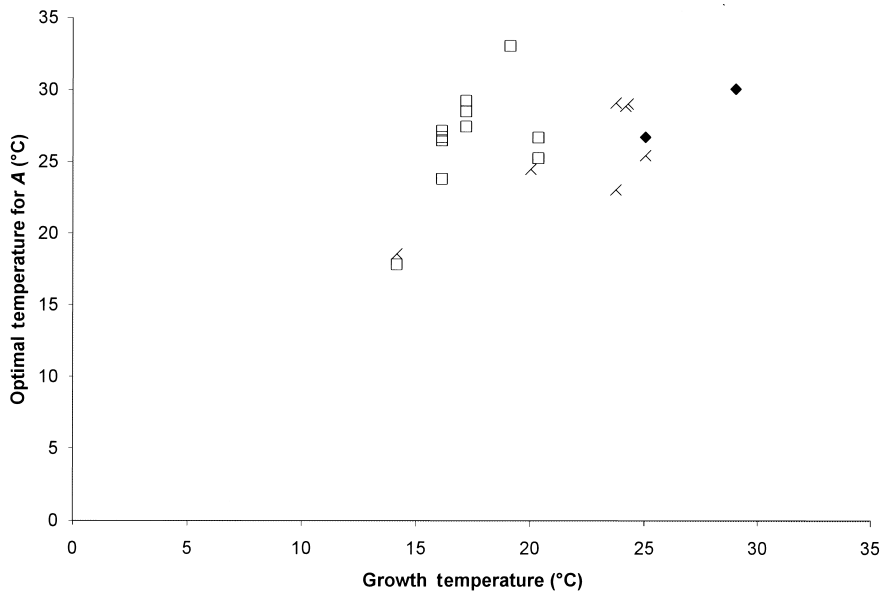
Values of  $k_{25}$  and  $k_{\text{opt}}$  are expressed on a one-sided leaf area basis. Standard deviations of  $k_{25}$  and  $k_{\text{opt}}$ , and standard errors of other parameters, are given in parentheses. OTC, open top chamber experiment; GH, greenhouse experiment; ME, mini-ecosystem experiment.

for the majority of broadleaf and coniferous trees, the optimal temperature for photosynthesis varies between 23 and 30 °C and is largely unrelated to growth temperature. However, the trees grown in cold conditions in Finland had considerably lower optimal temperatures. The optimal temperatures for the two crop species, which were grown in warm conditions, were comparable to the highest optimal temperatures obtained for the tree species. The rate of

increase of photosynthesis between 15 and 30 °C was also similar for most plants in the survey, ranging from 1.2 to 1.6 (Fig. 5). The exceptions were the Finnish trees, again, for which photosynthesis actually decreased over this temperature range, and walnut (*J. regia*) and cotton (*G. hirsutum*), which had particularly high rates of increase. From Figs 4 and 5 we can identify three broad classes of implied photosynthetic temperature response (Fig. 6). Most plants had



**Figure 3.** Relationship between  $J_{\max}$  and  $V_{\text{cmax}}$  at 25 °C. Filled symbols: crop species; open symbols: broadleaf species; crosses: coniferous species. Fitted regression line has slope of 1.67.



**Figure 4.** Modelled optimal temperature of light-saturated net photosynthesis plotted against mean temperature in month prior to measurements. Filled symbols: crop species; open symbols: broadleaf species; crosses: coniferous species.

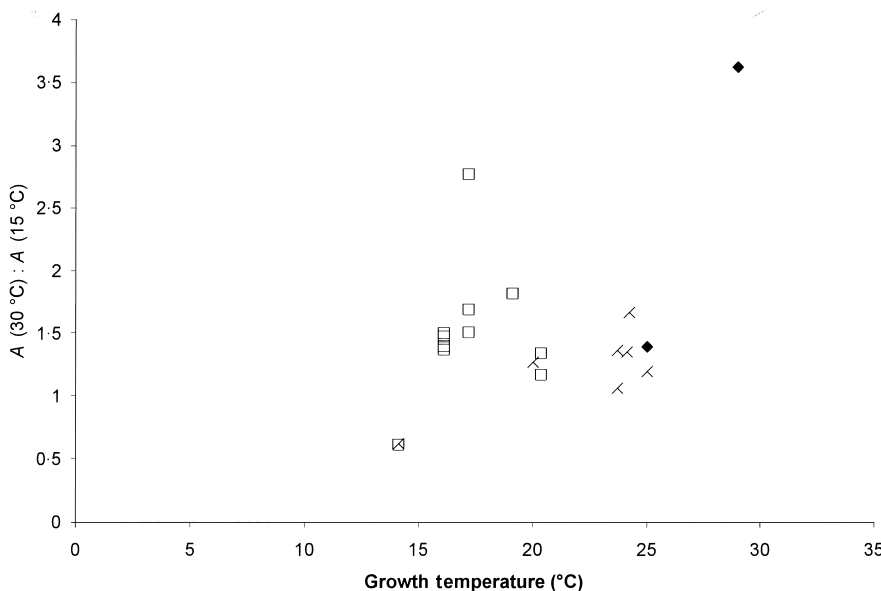
fairly similar responses, falling between those of *A. pseudo-platanus* and *Q. petraea*. The two Finnish trees, *B. pendula* and *P. sylvestris*, had distinctly different responses, with much lower optimal temperatures. Finally, cotton (and to a lesser extent *J. regia*) differed in having a much steeper response curve.

**DISCUSSION**

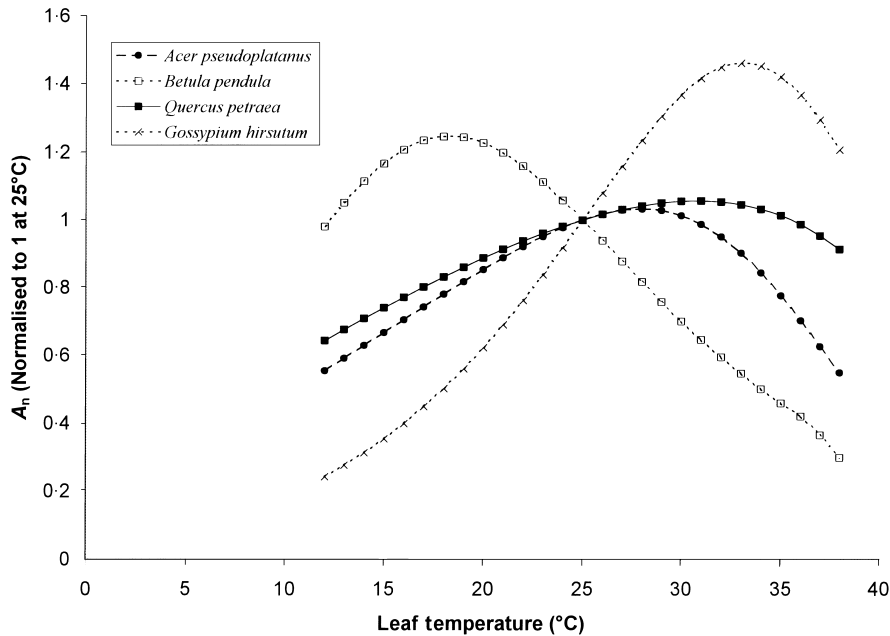
The aim of this review was to investigate variability in the temperature responses of the model parameters  $J_{max}$  and  $V_{cmax}$ , with a view to improving parameter choice when modelling photosynthetic processes. The major factors thought to affect these responses are growth temperature

and genotype or species (Berry & Björkman 1980). It has also been suggested that nutrition (Martindale & Leegood 1997) and light availability (Niinemets *et al.* 1999) may play a role.

We found that the temperature responses of  $J_{max}$  and  $V_{cmax}$  obtained in gas exchange experiments were quite similar across many of the species included in the review (Tables 2 and 3), a promising finding as it potentially simplifies parameter choice. Parameter values obtained by alternative means (*in vitro*, chlorophyll fluorescence) are included for comparison in Table 4, and generally fall within the range of values reported in Tables 2 and 3. Responses of coniferous and broadleaf trees were broadly similar, with only a slight trend for lower  $H_a$  of  $J_{max}$  in conifers. However, the responses of the two crop species, par-



**Figure 5.** Modelled ratio of light-saturated net photosynthesis at 30 °C to that at 15 °C, plotted against mean temperature in month prior to measurements. Filled symbols: crop species; open symbols: broadleaf species; crosses: coniferous species.



**Figure 6.** Sample responses of modelled leaf photosynthesis to leaf temperature. Values are normalized to 1 at 25 °C.

ticularly cotton, differed from tree species in several aspects including activation energies of both  $J_{\max}$  and  $V_{\max}$  and the ratio of  $J_{\max} : V_{\max}$  at 25 °C, suggesting that alternative parameter sets are required for modelling these two plant types. This result needs to be clarified by expansion of the database on herbaceous species and crops, however.

It is not possible to draw inferences about acclimation of photosynthesis to growing conditions from such a diverse set of studies, because several alternative explanations are possible for any observed differences, such as differences in experimental protocol or genotypic differences. Nevertheless some interesting comparisons can be made which can serve as a preliminary basis for generalizations about temperature responses in different environments.

For example, we can compare studies on the same species growing in different environmental conditions. Both *Fagus sylvatica* and *Quercus robur* were the subject of two different studies, one with seedlings growing individually in

pots and one with seedlings growing densely in mini-ecosystems. Low foliar nitrogen in the mini-ecosystem studies led to low values of  $k_{25}$  for both  $J_{\max}$  and  $V_{\max}$ . The relative temperature response of  $V_{\max}$  was unchanged, but  $T_{\text{opt}}$  of  $J_{\max}$  was lower in the mini-ecosystem experiment. This result parallels that of Niinemets *et al.* (1999) who found that the temperature optimum of  $J_{\max}$  was positively correlated with light availability and suggested that the correlation was a result of photosynthetic acclimation to microclimate.

There was generally a poor relationship between parameter values and growth temperature, with the clear exception of the lowest-temperature-grown plants, *B. pendula* and *P. sylvestris*, which had distinctly different temperature responses compared to plants of the same genus grown in temperate climates. The low-temperature-grown plants had low optimal temperatures for both  $J_{\max}$  and  $V_{\max}$ , and low  $J_{\max} : V_{\max}$  ratios. Although not completely comparable, a

Parameter values	Material	Authors		
$V_{\max}$				
$E_a$				
58-52	<i>Atriplex glabriscula</i> , purified Rubisco	Badger & Collatz (1977) <sup>1</sup>		
65-33	transgenic <i>Nicotiana tabacum</i>	Bernacchi <i>et al.</i> (2001) <sup>2</sup>		
$J_{\max}$				
$H_a$	$T_{\text{opt}}$			
65-01	179.2	33.7	<i>Populus tremula</i> , intact leaves	Niinemets <i>et al.</i> (1999) <sup>3</sup>
54-97	325.5	40.3	<i>Tilia cordata</i> , intact leaves	Niinemets <i>et al.</i> (1999) <sup>3</sup>
37	220	31	barley chloroplasts	Nolan & Smillie (1976) <sup>1</sup>

**Table 4.** Comparable parameter values obtained by other methods

<sup>1</sup>*in vitro*; <sup>2</sup>*in vivo* measurements with transgenic low-Rubisco plants; <sup>3</sup>chlorophyll fluorescence.

study on alpine grasses growing in low temperature environments (Wohlfahrt *et al.* 1999) does not show such dramatic differences in the temperature optima of  $J_{\max}$  and  $V_{\text{cmax}}$ . Further research is required to clearly establish the effects of growth in a cold climate on the temperature responses of  $J_{\max}$  and  $V_{\text{cmax}}$ . No data were available for tropical species; it would be interesting to see how optimal temperatures for such species compare with those reported here.

Another key requirement for future research highlighted by this study is the need for more information on the temperature dependence of  $K_c$  and  $K_o$ , the Michaelis–Menten coefficients for Rubisco activity. We have illustrated the fact that values of  $V_{\text{cmax}}$  derived from gas exchange data depend strongly on the assumed values of  $K_c$  and  $K_o$  and hence are not readily comparable between studies. In the absence of a clear resolution of the temperature dependence of these parameters, it is important, particularly when modelling, to ensure that parameter sets are consistent (Medlyn *et al.* 1999).

It should be noted that photosynthetic rates are determined not only by biochemical processes, but also by stomatal conductance to  $\text{CO}_2$ . In this study we have omitted to consider the effects on photosynthesis of possible acclimation of stomatal conductance to temperature. (Figs 4–6 were constructed assuming a constant  $C_i:C_a$  ratio.) In the companion paper (Medlyn, Loustau & Delzon 2002), we showed that changes in stomatal conductance could contribute considerably to photosynthetic temperature acclimation. A similar result was found by Ferrar, Slatyer & Vranjic (1989) for *Eucalyptus* species and Ellsworth (2000) for *Pinus taeda*. Berry & Björkman (1980) suggested stomatal acclimation to temperature was uncommon but also noted that information on this topic was scarce. Even without acclimation, photosynthetic rates at ambient  $\text{CO}_2$  concentration at optimum temperature, and the temperature of optimum photosynthesis itself, can be strongly affected by stomatal responses to temperature and water vapour pressure deficits (Kirschbaum & Farquhar 1984). Hence, even with identical photosynthetic parameters, leaves can have different photosynthetic rates under ambient conditions due to different stomatal conductances caused by internal (e.g. water stress) or external (e.g. water vapour pressure deficits) factors. It has also been suggested that changes in the temperature response of cell-wall conductance may be a factor in temperature acclimation (Makino *et al.* 1994). We were unable to evaluate this possibility owing to lack of data.

## CONCLUSION

The primary aim of this review of the temperature responses of model parameters  $J_{\max}$  and  $V_{\text{cmax}}$  was to highlight variability in these responses among species and growth environments in order to improve parameter choice when modelling temperature effects on photosynthesis and growth. In general, it was found that parameters for crop

species, temperate trees, and boreal trees, fell into three distinct groups (see Tables 2 and 3), suggesting that modellers should use a set of parameters from the appropriate group. The limited data analysed here also revealed differences in photosynthetic temperature response parameters among growth environments, suggesting that equations should be chosen, where possible, to be appropriate for given radiation and temperature conditions. However, to better model temperature responses, a greater understanding of the functional significance of differences among broad plant types and growth environments is needed, which will require more careful experimental comparisons of within-versus among-species variation in temperature response parameters.

## ACKNOWLEDGMENTS

B.M. acknowledges financial support from the French Institut National de la Recherche Agronomique and the Australian Research Council. D.E. was supported by funds from the US Department of Energy, Office of Biological and Environmental Research under the Forest-Atmosphere Carbon Transfer and Storage (FACTS) project. We thank Georg Wohlfahrt for helpful discussion and Michael Battaglia for insightful comments on the manuscript.

## REFERENCES

- Armond P.A., Schreiber U. & Björkman O. (1978) Photosynthetic acclimation to temperature in the desert shrub, *Larrea divaricata*. II. Light-harvesting efficiency and electron transport. *Plant Physiology* **61**, 411–415.
- Badger M.R. & Andrews T.J. (1974) Effects of  $\text{CO}_2$ ,  $\text{O}_2$  and temperature on a high-affinity form of ribulose diphosphate carboxylase-oxygenase from spinach. *Biochemical and Biophysical Research Communications* **60**, 204–210.
- Badger M.R. & Collatz G.J. (1977) Studies on the kinetic mechanism of ribulose-1,5-bisphosphate carboxylase and oxygenase reactions, with particular reference to the effect of temperature on kinetic parameters. *Carnegie Institute of Washington Yearbook* **76**, 355–361.
- Bernacchi C.J., Singsaas E.L., Pimentel C., Portis A.R. Jr & Long S.P. (2001) Improved temperature response functions for models of Rubisco-limited photosynthesis. *Plant, Cell and Environment* **24**, 253–260.
- Berry J. & Björkman O. (1980) Photosynthetic response and adaptation to temperature in higher plants. *Annual Review of Plant Physiology* **31**, 491–543.
- Brooks A. & Farquhar G.D. (1985) Effect of temperature on the  $\text{CO}_2/\text{O}_2$  specificity of ribulose-1,5-bisphosphate carboxylase/oxygenase and the rate of respiration in the light: estimates from gas-exchange experiments on spinach. *Planta* **165**, 397–406.
- Cramer W., Bondeau A., Woodward F.I., et al. (2001) Global response of terrestrial ecosystem structure and function to  $\text{CO}_2$  and climate change: results from six dynamic global vegetation models. *Global Change Biology* **7**, 357–373.
- Dreyer E., Le Roux X., Montpied P., Daudet F.A. & Masson F. (2001) Temperature response of leaf photosynthetic capacity in

- seedlings from seven temperate forest tree species. *Tree Physiology* **21**, 223–232.
- Ellsworth D.S. (2000) Seasonal CO<sub>2</sub> assimilation and stomatal limitations in a *Pinus taeda* canopy. *Tree Physiology* **20**, 435–445.
- Farquhar G.D., von Caemmerer S. & Berry J.A. (1980) A biochemical model of photosynthetic CO<sub>2</sub> assimilation on leaves of C<sub>3</sub> species. *Planta* **149**, 78–90.
- Ferrar P.J., Slatyer R.O. & Vranjic J.A. (1989) Photosynthetic temperature acclimation in *Eucalyptus* species from diverse habitats, and a comparison with *Nerium oleander*. *Australian Journal of Plant Physiology* **16**, 199–217.
- Harley P.C. & Baldocchi D.D. (1995) Scaling carbon dioxide and water vapour exchange from leaf to canopy in a deciduous forest. I. Leaf model parameterization. *Plant, Cell and Environment* **18**, 1146–1156.
- Harley P.C., Tenhunen J.D. & Lange O.L. (1986) Use of an analytical model to study limitation on net photosynthesis in *Arbutus unedo* under field conditions. *Oecologia* **70**, 393–401.
- Harley P.C., Thomas R.B., Reynolds J.F. & Strain B.R. (1992) Modelling photosynthesis of cotton grown in elevated CO<sub>2</sub>. *Plant, Cell and Environment* **15**, 271–282.
- Harley P.C., Weber J.A. & Gates D.M. (1985) Interactive effects of light, leaf temperature, CO<sub>2</sub> and O<sub>2</sub> on photosynthesis in soybean. *Planta* **165**, 249–263.
- Havaux M. (1993) Rapid photosynthetic adaptation to heat stress triggered in potato leaves by moderately elevated temperatures. *Plant, Cell and Environment* **16**, 461–467.
- Hikosaka K., Murakami A. & Hirose T. (1999) Balancing carboxylation and regeneration of ribulose-1,5-bisphosphate in leaf photosynthesis: temperature acclimation of an evergreen tree, *Quercus myrsinaefolia*. *Plant, Cell and Environment* **22**, 841–849.
- Johnson F., Eyring H. & Williams R. (1942) The nature of enzyme inhibitions in bacterial luminescence: sulphanilamide, urethane, temperature, pressure. *Journal of Cell Comparative Physiology* **20**, 247–268.
- Jordan D.B. & Ogren W.L. (1984) The CO<sub>2</sub>/O<sub>2</sub> specificity of ribulose-1,5-bisphosphate carboxylase/oxygenase: dependence on ribulose bisphosphate concentration, pH and temperature. *Planta* **161**, 308–313.
- Kirschbaum M.U.F. & Farquhar G.D. (1984) Temperature dependence of whole-leaf photosynthesis in *Eucalyptus pauciflora* Sieb. ex Spreng. *Australian Journal of Plant Physiology* **11**, 519–538.
- Kleinbaum D.G., Kupper L.L., Muller K.E. & Nizam A. (1998) *Applied Regression Analysis and Other Multivariable Methods*. Duxbury Press, Pacific Grove, CA, USA.
- Leuning R. (1997) Scaling to a common temperature improves the correlation between the photosynthesis parameters  $J_{max}$  and  $V_{cmax}$ . *Journal of Experimental Botany* **48**, 345–347.
- Lloyd J., Grace J., Miranda A.C., Meir P., Wong S.C., Miranda H.S., Wright I.R., Gash J.H.C. & McIntyre J. (1995) A simple calibrated model of Amazon rainforest productivity based on leaf biochemical properties. *Plant, Cell and Environment* **18**, 1129–1145.
- Long S.P. (1991) Modification of the response of photosynthetic productivity to rising temperature by atmospheric CO<sub>2</sub> concentrations: has its importance been underestimated? *Plant, Cell and Environment* **14**, 729–739.
- Long S.P., Postl W.F. & Bolharnordenkamp H.R. (1993) Quantum yields for uptake of carbon dioxide in C<sub>3</sub> vascular plants of contrasting habitats and taxonomic groupings. *Planta* **189**, 226–234.
- Makino A., Nakano H. & Mae T. (1994) Effects of growth temperature on the responses of ribulose-1,5-bisphosphate carboxylase, electron transport components, and sucrose synthesis enzymes to leaf nitrogen in rice, and their relationships to photosynthesis. *Plant Physiology* **105**, 1231–1238.
- Martindale W. & Leegood R.C. (1997) Acclimation of photosynthesis to low temperature in *Spinacia oleracea* L. II. Effects of nitrogen supply. *Journal of Experimental Botany* **48**, 1873–1880.
- Medlyn B.E., Badeck F.-W., de Pury D.G.G., et al. (1999) Effects of elevated [CO<sub>2</sub>] on photosynthesis in European forest species: a meta-analysis of model parameters. *Plant, Cell and Environment* **22**, 1475–1495.
- Medlyn B.E., Loustau D. & Delzon S. (2002) Temperature response of parameters of a biochemically-based model of photosynthesis. I. Seasonal changes in mature maritime pine (*Pinus pinaster* Ait.). *Plant, Cell and Environment* **25**, 1155–1165.
- Niinemetts U., Oja V. & Kull O. (1999) Shape of leaf photosynthetic electron transport versus temperature response curve is not constant along canopy light gradients in temperate deciduous trees. *Plant, Cell and Environment* **22**, 1497–1513.
- Nolan W.G. & Smillie R.M. (1976) Multi temperature effects on Hill reaction activity of barley chloroplasts. *Biochimica Biophysica Acta* **440**, 461–475.
- Robakowski P., Montpied P. & Dreyer E. (2002) Temperature response of photosynthesis of silver fir (*Abies alba* Mill.) seedlings. *Annals of Forest Science* **59**, 159–166.
- Slatyer R.O. & Morrow P.A. (1977) Altitudinal variation in the photosynthetic characteristics of snow gum *Eucalyptus pauciflora* Sieb. ex Spreng. I. Seasonal changes under field conditions in the Snowy Mountains area of South-eastern Australia. *Australian Journal of Botany* **25**, 1–20.
- Strassemeyer J. & Forstreuter M. (1997) Parameterization of a leaf gas-exchange model for *Fagus sylvatica* L. using microcosms grown under ambient and elevated CO<sub>2</sub>. *Landschaftsentwicklung und Umweltforschung* **107**, 61–72.
- Walcroft A.S., Le Roux X., Diaz-Espejo A. & Sinoquet H. (2002) Spatial and temporal variability of photosynthetic capacity within a peach tree crown. *Tree Physiology* in press.
- Walcroft A.S., Whitehead D., Silvester W.B. & Kelliher F.M. (1997) The response of photosynthetic model parameters to temperature and nitrogen concentration in *Pinus radiata* D. Don. *Plant, Cell and Environment* **20**, 1338–1348.
- Wang K.-Y., Kellomaki S. & Laitinen K. (1996) Acclimation of photosynthetic parameters in Scots pine after three years exposure to elevated temperature and CO<sub>2</sub>. *Agricultural and Forest Meteorology* **82**, 195–217.
- Wohlfahrt G., Bahn M., Haubner E., Horak I., Michaeler W., Rottmar K., Tappeiner U. & Cernusca A. (1999) Inter-specific variation of the biochemical limitation to photosynthesis and related leaf traits of 30 species from mountain grassland ecosystems under different land use. *Plant, Cell and Environment* **22**, 1281–1296.
- Wullschleger (1993) Biochemical limitations to carbon assimilation in C<sub>3</sub> plants – a retrospective analysis of A/C<sub>i</sub> curves from 109 species. *Journal of Experimental Botany* **44**, 907–920.

Received 8 November 2001; received in revised form 28 March 2002; accepted for publication 2 April 2002