



**HAL**  
open science

## A transition approach from a local second gradient model to a cohesive zone model

Gwendal Jouan, Panagiotis Kotronis, Frédéric Collin

► **To cite this version:**

Gwendal Jouan, Panagiotis Kotronis, Frédéric Collin. A transition approach from a local second gradient model to a cohesive zone model. 4th International Conference on Computational Modeling of Fracture and Failure of Materials and Structures, CFRAC 2015, Ecole Normale Supérieure de Cachan, Jun 2015, Paris, France. pp.215-216. hal-01180337

**HAL Id: hal-01180337**

**<https://hal.science/hal-01180337>**

Submitted on 23 Dec 2016

**HAL** is a multi-disciplinary open access archive for the deposit and dissemination of scientific research documents, whether they are published or not. The documents may come from teaching and research institutions in France or abroad, or from public or private research centers.

L'archive ouverte pluridisciplinaire **HAL**, est destinée au dépôt et à la diffusion de documents scientifiques de niveau recherche, publiés ou non, émanant des établissements d'enseignement et de recherche français ou étrangers, des laboratoires publics ou privés.



Distributed under a Creative Commons Attribution - NonCommercial - NoDerivatives 4.0 International License

# A transition approach from a local second gradient model to a cohesive zone model

G. Jouan<sup>1</sup>

P. Kotronis<sup>1</sup>

F. Collin<sup>2</sup>

<sup>1</sup> LUNAM Université, Ecole Centrale de Nantes, Université de Nantes, CNRS UMR 6183, GeM (Institut de Recherche en Génie Civil et Mécanique)  
1 rue de la Noë, BP 92101, 44321, Nantes, cedex 3, France  
gwendal.jouan@ec-nantes.fr, panagiotis.kotronis@ec-nantes.fr

<sup>2</sup> Département Argenco, Université de Liège, Institut de mécanique et Génie Civil  
Bât.52 1 Chemin des chevreuils, B-4000 Liège 1, Belgium  
f.collin@ulg.be

Among the various regularization methods that enable to deal with the problem of strain localization in the framework of continuum mechanics, the class of generalized continua introduces an internal length by taking into account additional kinematics terms into the virtual power principles. As a particular case of this type of continua, the local second gradient model developed by Chambon and coworkers [1] has been successfully used for soils where the main problem is shear banding. More recently, it has been also used in the context of damage mechanics for concrete structural elements [2] where strains mainly localize under the first mode of crack propagation.

We show that this type of strain localization can become problematic for the second gradient model. Indeed, the forces transmitted through the crack do not necessarily vanish for high values of damage. This is due to the the additional stresses, the so-called double stresses, of the second gradient model. Another problem, common among regularization techniques, is the continuous spreading of the localization band again for similarly high damage values (fully formed cracks).

Following the work by Comi et al [3] and Cuvilliez et al [4] for different regularization methods, we propose to deal with theses issues applying a transition to a cohesive zone model. In this way, the various phases of strain localization and fracture can be correctly modeled : from diffuse damage to localization till finally to a fully formed crack. The theoretical formulation and finite element implementation are discussed with special care to the additional boundary conditions which naturally appear in a second gradient continuum. Application to a 3 point bending test on a notched beam illustrates the limitations and the advantages of the approach. The results show that the new model is more adequate to represent the full experimental force displacement curve.

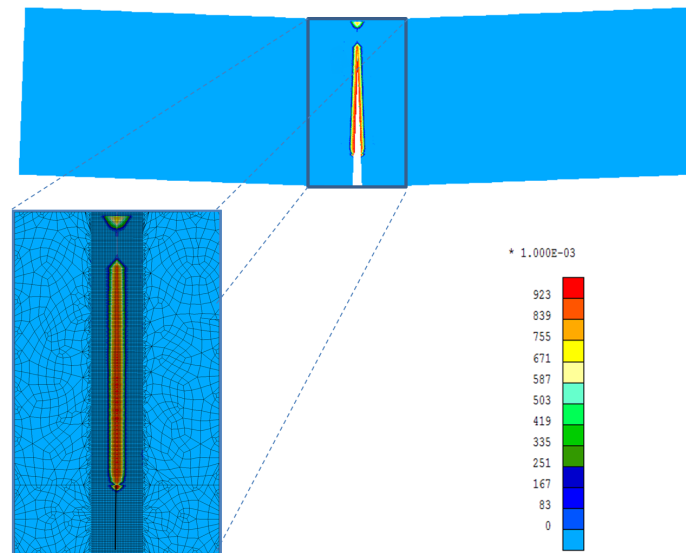


FIGURE 1 – 3 point bending test : Damage distribution at the notch tip with open cohesive zones

## Références

- [1] R. Chambon, D. Caillerie, T. Matsushima. Plastic continuum with microstructure, local second gradient theories for geomaterials : localization studies. *International Journal of Solids and Structures*, 38(46-47), 8503-8527, 2001.
- [2] G. Jouan, P. Kotronis, F. Collin. Using a second gradient model to simulate the behaviour of concrete of concrete structural elements. *Finite Elements in Analysis and Design*, 90(0), 50-60, 2014.
- [3] C. Comi, S. Mariani, U. Perego. An extended fe strategy for transition from continuum damage to mode I cohesive crack propagation. *International Journal for Numerical and Analytical Methods in Geomechanics*, 31(2), 213-238, 2007.
- [4] S. Cuvilliez, F. Feyel, E. Lorentz, S. Michel-Ponnelle. A Finite element approach coupling a continuous gradient damage model and a cohesive zone model within the framework of quasi-brittle failure. *Computer Methods in Applied Mechanics and Engineering*, 237, 244-259, 2012.