



**HAL**  
open science

## Agroforestry silvoarable systems with pollarded walnut trees: first evaluation by modeling and field monitoring

Jérémy Andre, Quentin Molto, Grégoire Talbot, Jean-Francois Bourdoncle,  
Alain Sellier, Christian Dupraz

### ► To cite this version:

Jérémy Andre, Quentin Molto, Grégoire Talbot, Jean-Francois Bourdoncle, Alain Sellier, et al.. Agroforestry silvoarable systems with pollarded walnut trees: first evaluation by modeling and field monitoring. World Congress on Agroforestry (WCA), World Agroforestry Centre, CGIAR (ICRAF). INT., Feb 2014, New-Delhi, India. hal-01173945

**HAL Id: hal-01173945**

**<https://hal.science/hal-01173945v1>**

Submitted on 5 Jun 2020

**HAL** is a multi-disciplinary open access archive for the deposit and dissemination of scientific research documents, whether they are published or not. The documents may come from teaching and research institutions in France or abroad, or from public or private research centers.

L'archive ouverte pluridisciplinaire **HAL**, est destinée au dépôt et à la diffusion de documents scientifiques de niveau recherche, publiés ou non, émanant des établissements d'enseignement et de recherche français ou étrangers, des laboratoires publics ou privés.

See discussions, stats, and author profiles for this publication at: <http://www.researchgate.net/publication/260924688>


# Poster WCA 2014-2452 AF with pollarded trees Andre et al


DATASET · MARCH 2014

DOWNLOADS

68

6 AUTHORS, INCLUDING:

 **Jeremy André**  
French National Institute for Agricultural Research  
4 PUBLICATIONS 0 CITATIONS  
[SEE PROFILE](#)

 **Christian Dupraz**  
French National Institute for Agricultural Research  
168 PUBLICATIONS 983 CITATIONS  
[SEE PROFILE](#)

VIEWS

34

DOWNLOADS

68

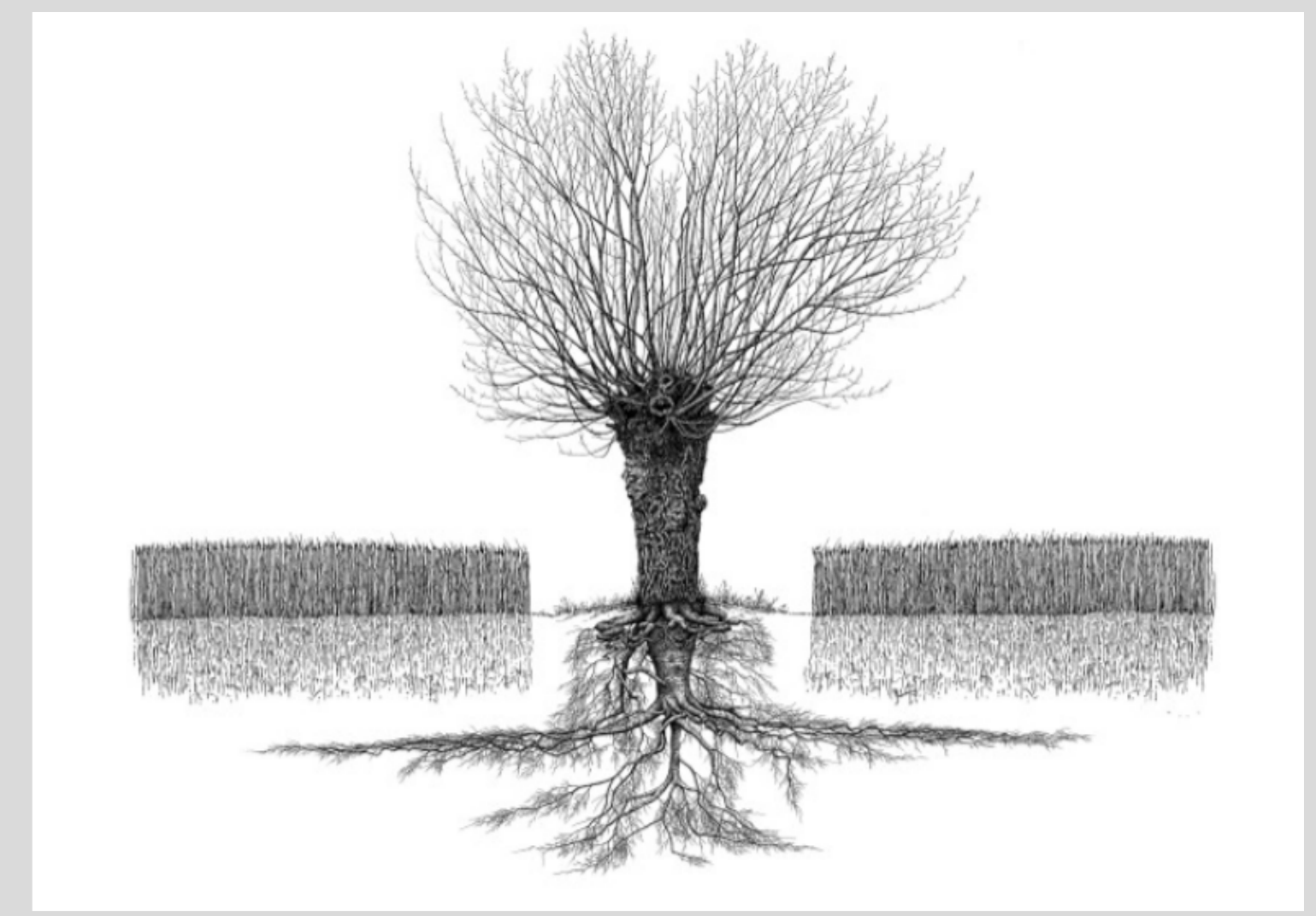
6 AUTHORS, INCLUDING:

 **Jeremy André**  
French National Institute for Agricultural Research  
4 PUBLICATIONS 0 CITATIONS  
[SEE PROFILE](#)

 **Christian Dupraz**  
French National Institute for Agricultural Research  
168 PUBLICATIONS 983 CITATIONS  
[SEE PROFILE](#)

VIEWS

34



# Agroforestry systems with pollarded walnut trees

## First evaluation by modeling and field monitoring

J. André, Q. Molto, G. Talbot, L. Dufour, J-F Bourdoncle, A. Sellier, C. Dupraz

### Background and objectives

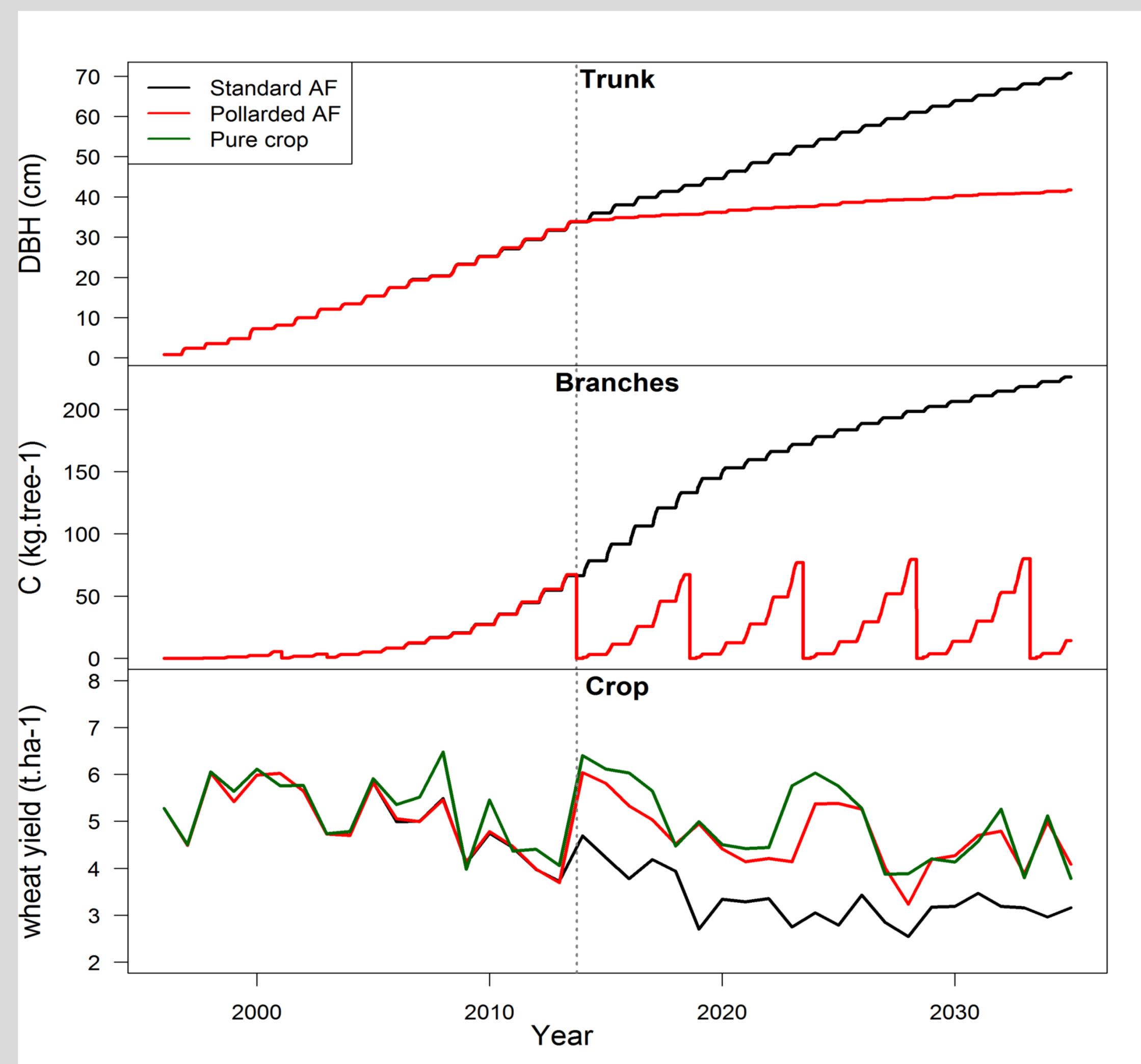
In alley cropping systems (AFS), competition for resources determines intercrop yield [1]. Large trees capture resources (light, water, nitrogen), and the intercrop yield decreases as trees grow up. This may drop the intercrop yield to unprofitable levels. We explore if reducing the tree crown size by pollarding could sustain crop production, while allowing to produce both timber (trunk) and biomass (branches)

### Methods

- Field survey : Hybrid walnut trees aged 18 year were pollarded at 4 m height : 5 trees in winter 2012-13 and 43 trees in winter 2013-14. DBH, branches biomass, leaf traits (SLA, LAI, C/N), phenology and diseases were monitored on pollarded and control standard agroforestry (AF) trees in 2013. Tree spacing is 13 x 8 m.
- Modelling : The Hi-sAFe [2, 3] model was adapted to simulate pollarded trees and compute Land Equivalent Ratios (LER [4]) of the system. The model accounts for competition for light, water and nitrogen between trees and crops.



### Results



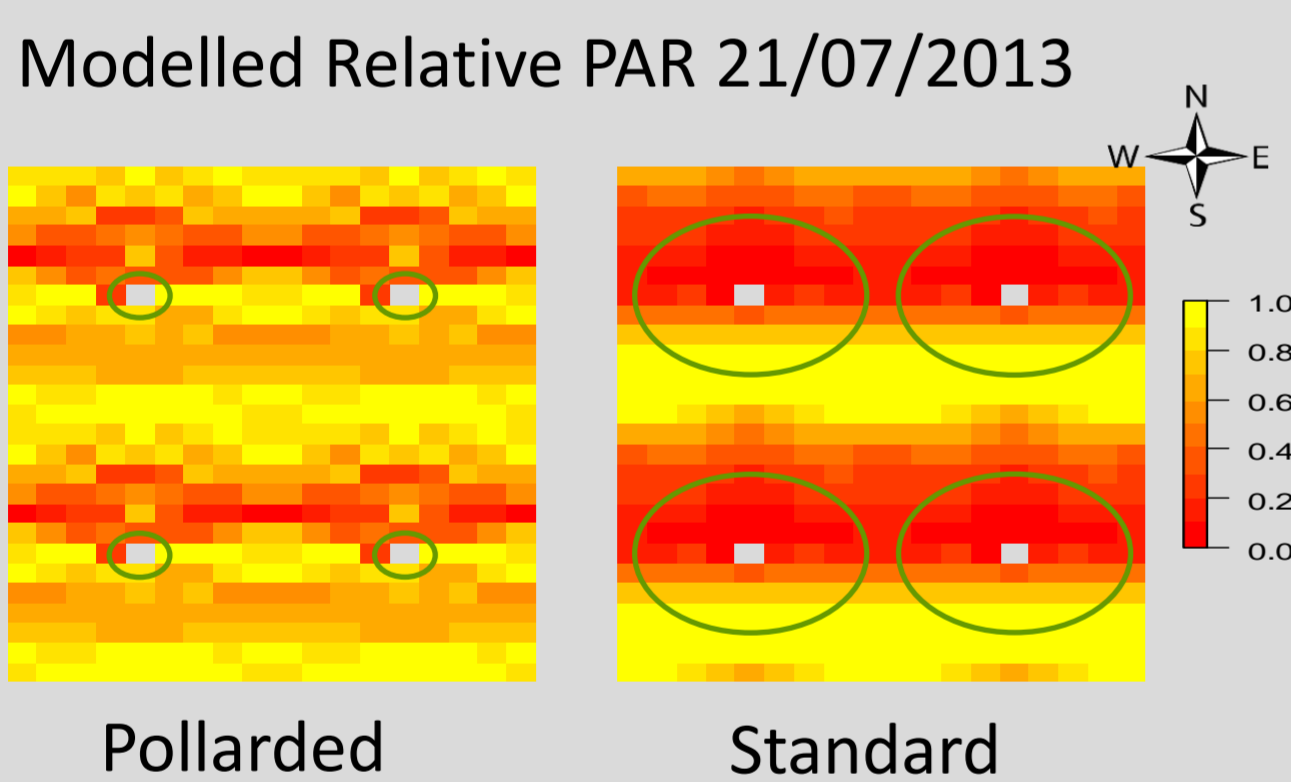
### LERs with pollarded vs standard trees

RYs	Trunk	Branches	Crop
<b>Pollarded</b>	<b>0.18</b>	<b>1.84</b>	<b>0.81</b>
<b>Standard</b>	<b>0.62</b>	<b>1.1</b>	<b>0.68</b>

LERs	Pollarded	Standard
<b>Crop &amp; branches</b>	<b>2,65</b>	<b>1,78</b>
<b>Crop &amp; timber</b>	<b>0,99</b>	<b>1,31</b>

$$RY = \frac{\text{yield in association}}{\text{yield in monocrop}}$$

$$LER = \sum RY$$



### Hi-sAFe simulation outputs (1995-2035)

Leaf phenology was highly disturbed by the late pollarding : very delayed leafing until mid-june, and very late leaf fall in autumn.

Leaf and branches were also strongly modified : continued growth until the winter, very large leaves, dark green leaves indicating N plentiness

Unexpected : against modelling results, DBH growth was not significantly reduced during the first year after pollarding (p-value : 0,697)



### Conclusions

Modelling results indicate that pollarding could be very effective in stimulating the intercrop yield, and that pollarded trees may produce mostly branch biomass, with a strong reduction in the trunk growth. If the farmer is interested in both crop and branch biomass production, AF with pollarded trees is the best option: 1 ha produces as much crop and branches as an astonishing 2.65 ha of the separated systems. If the farmer is interested in crop and timber, AF with standard trees is the best option.

However, field evidence during the first year after pollarding did not support such a strong reduction in trunk growth of pollarded trees. Monitoring during the coming years will help sort out this contradiction. The explanation may lay in the dynamics of the carbon reserves of the tree.

Pollarded trees were a very traditional agroforestry practice in Europe, and our results indicate that they may prove relevant again in the future.

### References

- [1] Dufour et al. 2013. J. of Agronomy and Crop Science. 199 (3):217-227.
- [2] Dupraz et al, 2005. SAFE project Report : <http://www.montpellier.inra.fr/safe/english/results/final-report/SAFE%20Final%20Synthesis%20Report.pdf>
- [3] Talbot 2011, Ph. D. thesis : <http://tel.archives-ouvertes.fr/tel-00664530>
- [4] Mead and Willey 1980. Exp. Agric. 16, 217-218.

\*INRA, UMR SYSTEM, 2 Place Viala, Bât. 27, 34060 Montpellier Cedex 2 – France

[jeremy-andre@hotmail.fr](mailto:jeremy-andre@hotmail.fr), [quentin.molto@supagro.inra.fr](mailto:quentin.molto@supagro.inra.fr), [talbot@mailoo.org](mailto:talbot@mailoo.org), [dufourl@supagro.inra.fr](mailto:dufourl@supagro.inra.fr), [bourdon@supagro.inra.fr](mailto:bourdon@supagro.inra.fr), [sellier@supagro.inra.fr](mailto:sellier@supagro.inra.fr), [dupraz@supagro.inra.fr](mailto:dupraz@supagro.inra.fr)