



Designing a tool for wheat cultivar assessment by analysing its potential uses.

Lorène Prost, Marie-Helene Jeuffroy, Marianne Cerf

► To cite this version:

Lorène Prost, Marie-Helene Jeuffroy, Marianne Cerf. Designing a tool for wheat cultivar assessment by analysing its potential uses.. Farming Systems Design 2007: An International Symposium on Methodologies on Integrated Analysis on Farm Production Systems, Sep 2007, Catania, Italy. hal-01173142

HAL Id: hal-01173142

<https://hal.science/hal-01173142>

Submitted on 3 Jun 2020

HAL is a multi-disciplinary open access archive for the deposit and dissemination of scientific research documents, whether they are published or not. The documents may come from teaching and research institutions in France or abroad, or from public or private research centers.

L'archive ouverte pluridisciplinaire **HAL**, est destinée au dépôt et à la diffusion de documents scientifiques de niveau recherche, publiés ou non, émanant des établissements d'enseignement et de recherche français ou étrangers, des laboratoires publics ou privés.

Designing a tool for wheat genotype assessment by analysing its potential uses

Lorène PROST (PhD)

Marianne CERF (ergonomist)

Marie-Hélène JEUFFROY (agronomist)

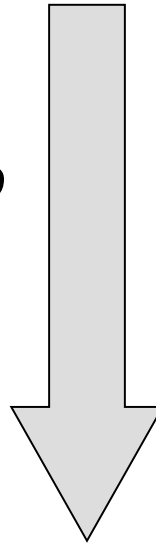
INRA (National Institute for Agricultural Research), France

prost@grignon.inra.fr

A focus on the design process

Support tools

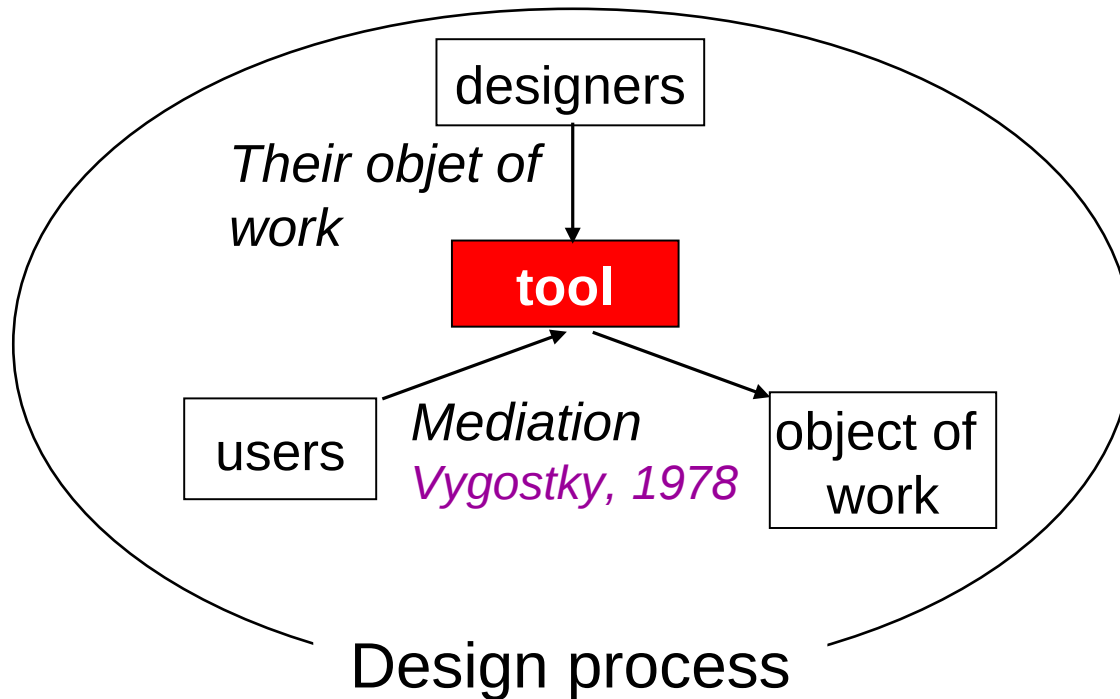
***Design process into
question ?***



Little used

Pluridisciplinary issue

Design continues in use (ergonomics) => cycle to build dialog between users and designers



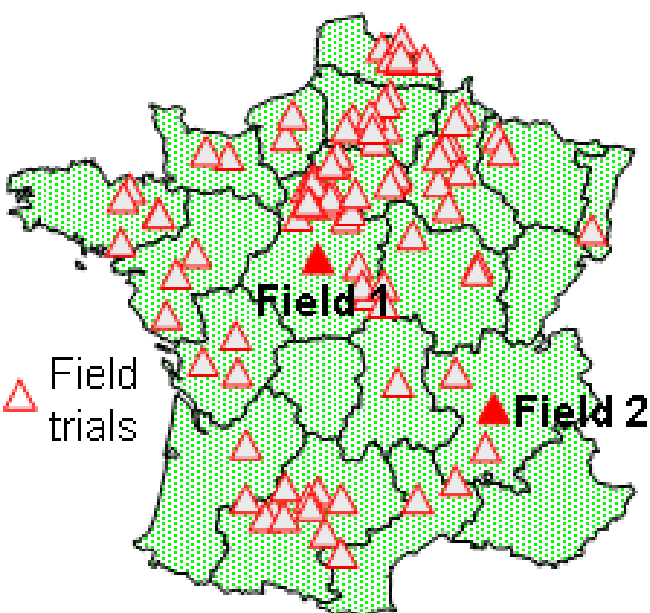
How to make this dialog possible?

What dynamics of transformation (tool + work) in such a design process?

The tool in design

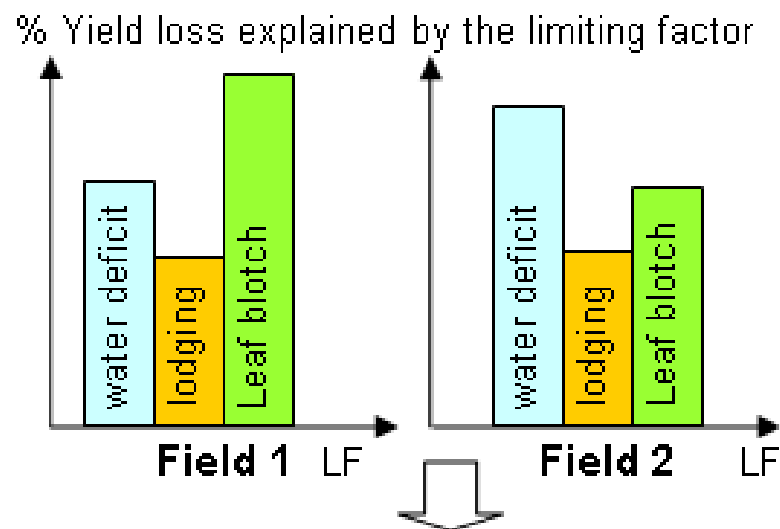
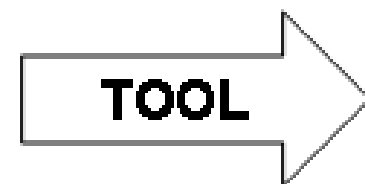
Tool for agronomists : plant breeders to food suppliers

Method that helps in assessing new genotypes (varieties) :

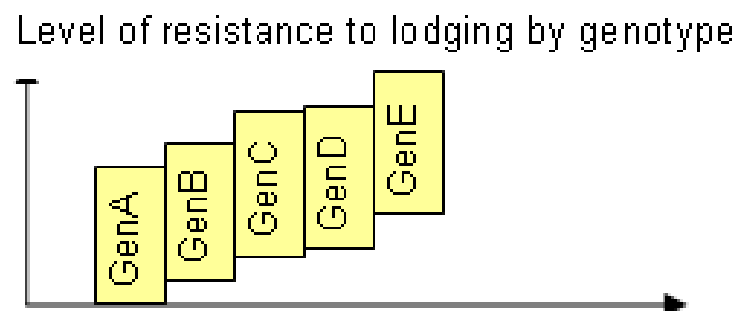


Example of a network of field trials (NFT)

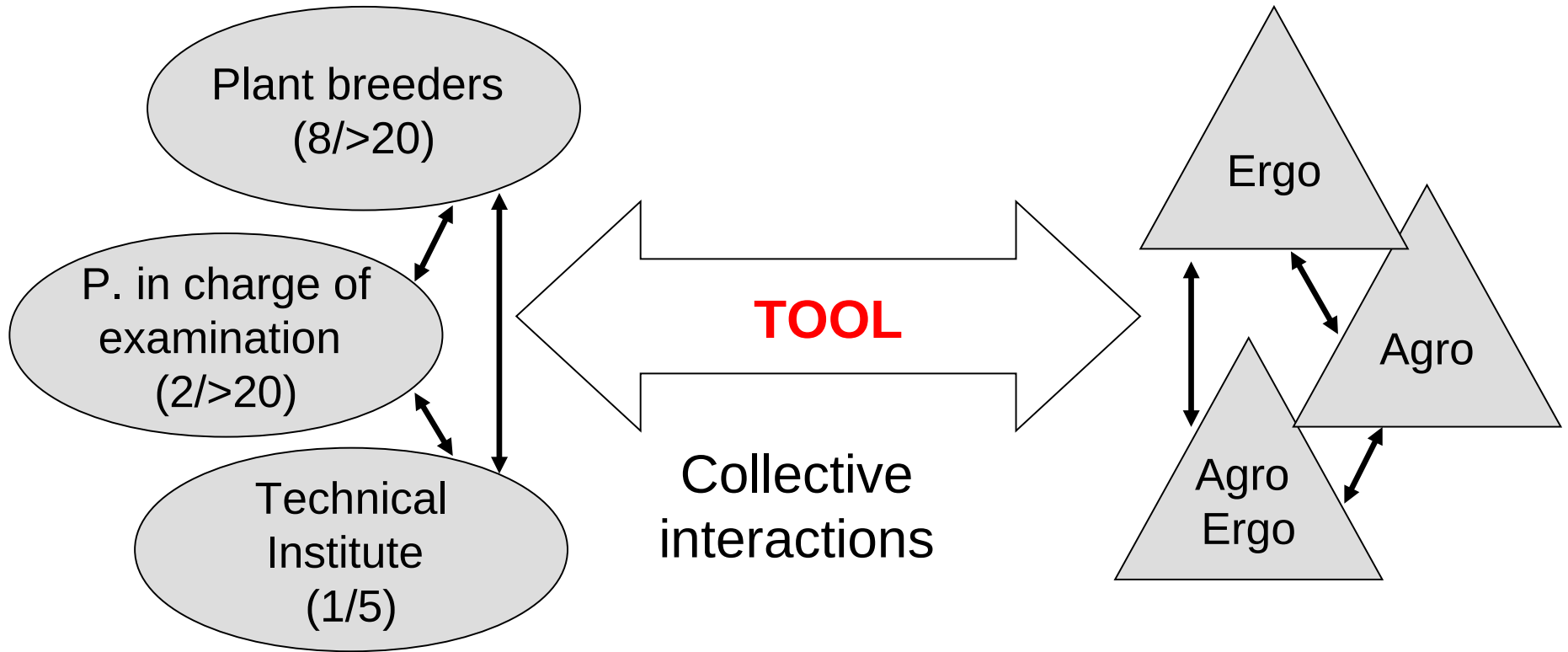
Output 1:
characterize the
limiting factors
(LF) of the yield



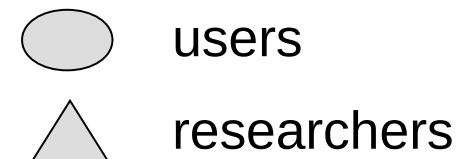
Output 2: assess
the resistance of
the new genotypes
(Gen) to the LF



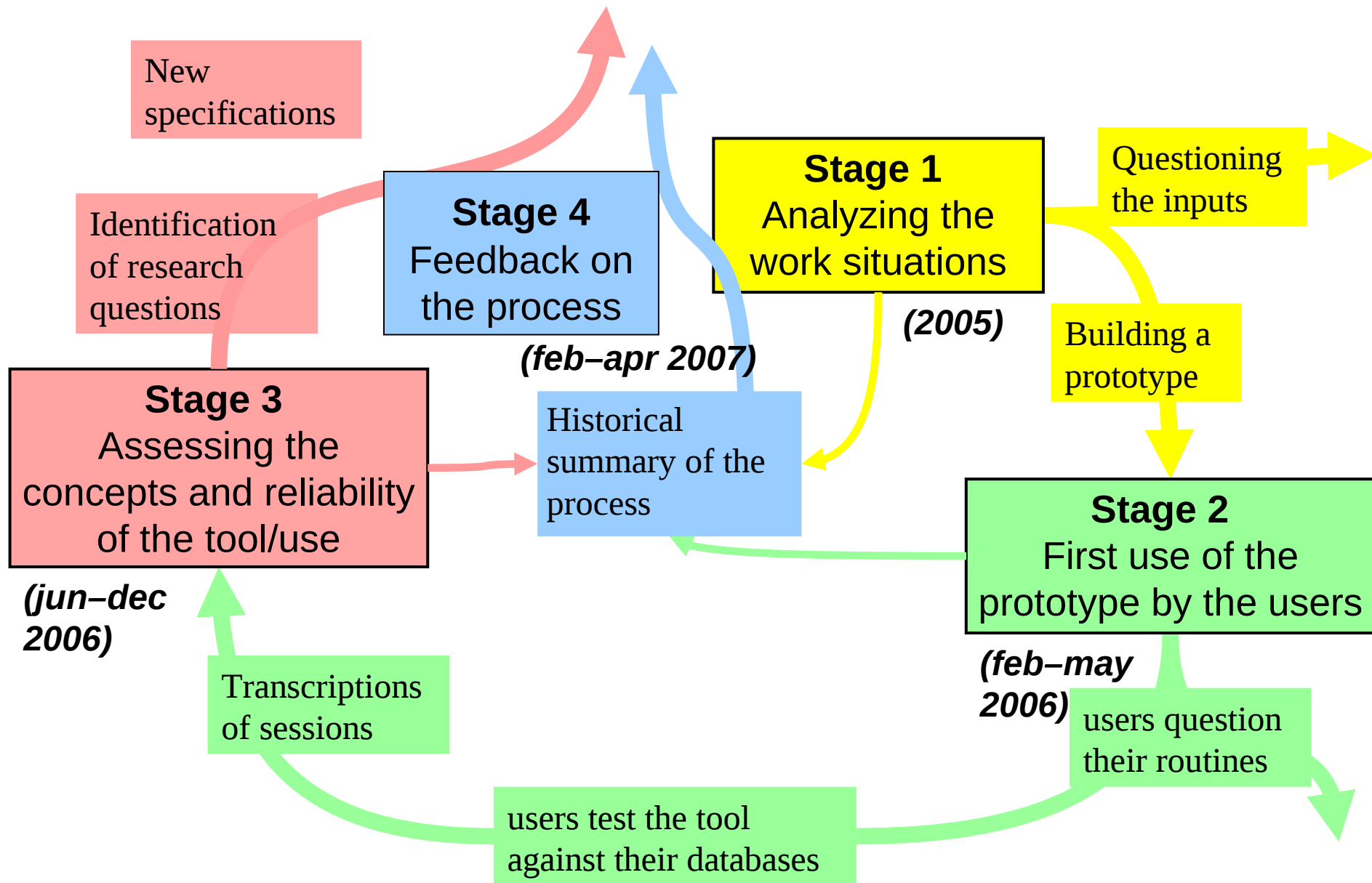
The actors of the study



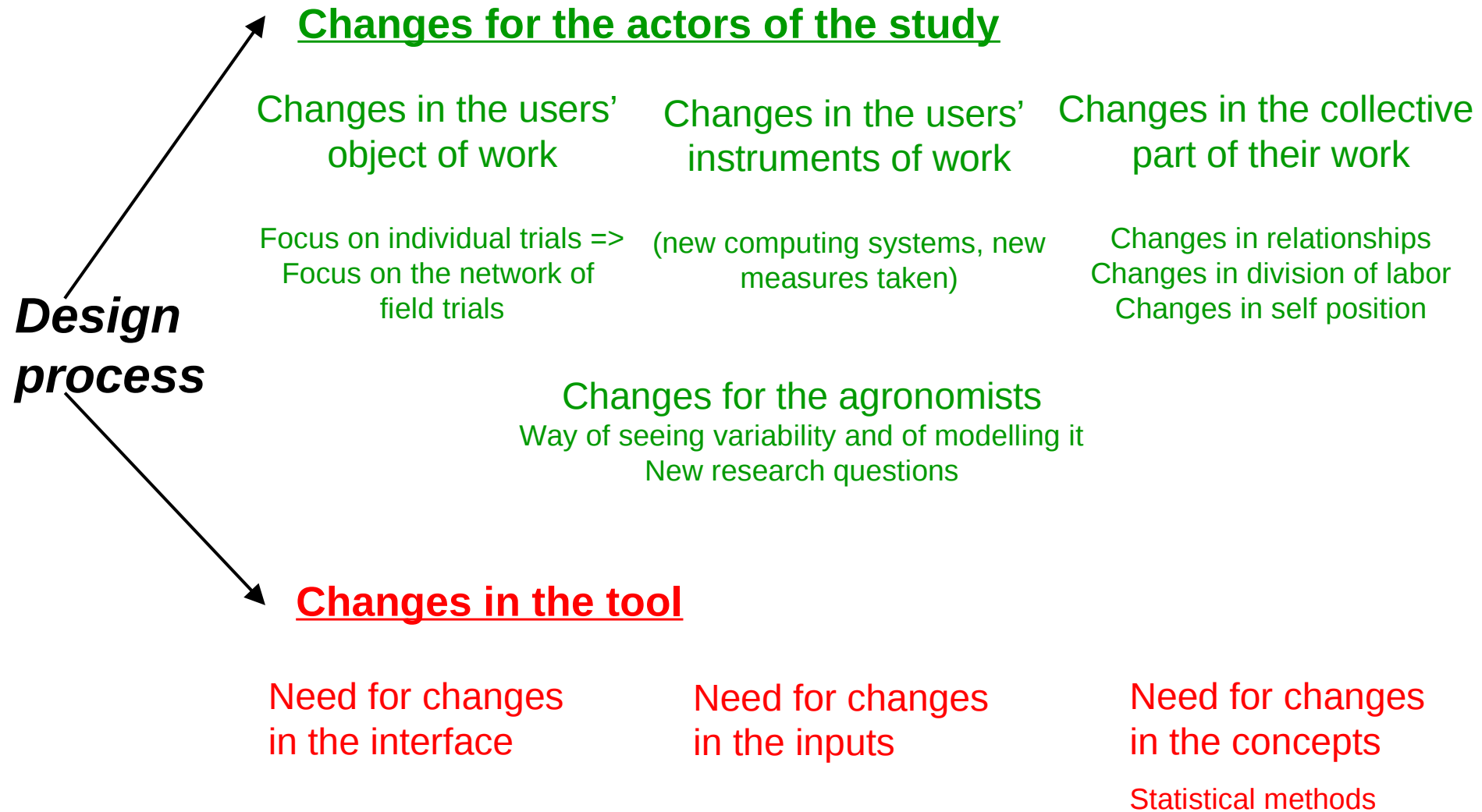
(Nb of full partners / less implied partners)



Research strategy: stages and results



Discussion



Conclusion and perspectives

Design of a support tool : methodology

- Importance of the tracks
- Central role of the prototype
- Role of the collectives of actors with various expectations
- A generic method

A process to be continued

Agro: Richness of agronomic questions with a strong scientific interest
for researchers

Ergo: lot of material to work out.