



HAL
open science

Redistribution and Effect of Various Elements on the Morphology of Primary Graphite in Cast Iron

Jacques Lacaze, Nathalie Valle, Koenraad Theuwissen, Jon Sertucha, Brahime El Adib, Lydia Laffont-Dantras

► **To cite this version:**

Jacques Lacaze, Nathalie Valle, Koenraad Theuwissen, Jon Sertucha, Brahime El Adib, et al.. Redistribution and Effect of Various Elements on the Morphology of Primary Graphite in Cast Iron. *Advances in Materials Science and Engineering*, 2013, vol. 2013, pp. 1-9. 10.1155/2013/638451 . hal-01169928

HAL Id: hal-01169928

<https://hal.science/hal-01169928>

Submitted on 30 Jun 2015

HAL is a multi-disciplinary open access archive for the deposit and dissemination of scientific research documents, whether they are published or not. The documents may come from teaching and research institutions in France or abroad, or from public or private research centers.

L'archive ouverte pluridisciplinaire **HAL**, est destinée au dépôt et à la diffusion de documents scientifiques de niveau recherche, publiés ou non, émanant des établissements d'enseignement et de recherche français ou étrangers, des laboratoires publics ou privés.



Open Archive TOULOUSE Archive Ouverte (OATAO)

OATAO is an open access repository that collects the work of Toulouse researchers and makes it freely available over the web where possible.

This is an author-deposited version published in : <http://oatao.univ-toulouse.fr/>
Eprints ID : 14057

To link to this article :

DOI: 10.1155/2013/638451

URL: <http://dx.doi.org/10.1155/2013/638451>

To cite this version : Lacaze, Jacques and Valle, Nathalie and Theuwissen, Koenraad and Sertucha, Jon and El Adib, Brahime and Laffont-Dantras, Lydia *Redistribution and Effect of Various Elements on the Morphology of Primary Graphite in Cast Iron*. (2013) *Advances in Materials Science and Engineering*, vol. 2013. pp. 1-9. ISSN 1687-8434

Any correspondance concerning this service should be sent to the repository administrator: staff-oatao@listes-diff.inp-toulouse.fr

Research Article

Redistribution and Effect of Various Elements on the Morphology of Primary Graphite in Cast Iron

J. Lacaze,¹ N. Valle,² K. Theuwissen,¹ J. Sertucha,³ B. El Adib,² and L. Laffont¹

¹ CIRIMAT, Université de Toulouse, ENSIACET, 31432 Toulouse Cedex 4, France

² Department "Science and Analysis of Materials" (SAM), Centre de Recherche Public-Gabriel Lippmann 41 rue du Brill, 4422 Belvaux, Luxembourg

³ Engineering and Foundry Processes Department, AZTERLAN, Aliendalde Auzunea 6, Bizkaia, 48200 Durango, Spain

It has been shown repeatedly that many elements present as traces or at low level can affect graphite shape in cast irons. As part of a long term project aimed at clarifying the growth and the alteration of spheroidal graphite, a study on the effect of a few elements (Cu, Sn, Sb, and Ti) on primary graphite growth was undertaken and analysed with reference to an alloy without any such additions. This work was performed by remelting alloys in graphite crucibles thus saturating the melt in carbon and enabling primary graphite to grow by controlled cooling of the melt above the eutectic temperature. Primary graphite growth in the reference alloy was observed to be lamellar, while the added elements were found to affect bulk graphite and to modify its outer shape, with Sb leading eventually to rounded agglomerates together with wavy lamellae. Secondary ion mass spectrometry was used to analyze the distribution of elements, and no build-up of trace elements at the graphite surface could be observed. Instead, it is established that the perturbation of bulk graphite is associated with inhomogeneous distribution of metallic elements inside graphite precipitates.

1. Introduction

Graphite in cast irons can adopt various shapes partly depending not only on cooling rate but also on the presence of additives or of trace elements. Without appropriate preparation, graphite precipitates as lamellae (GL), and this has been in part related to the presence of oxygen and sulfur dissolved in cast iron melts. These latter elements may be withdrawn from the melt by adding 0.025 to 0.050 wt.% Mg (or Mg associated with Ce) which ensure in most cases that graphite precipitates as spheroids (SG) while intermediate amounts of Mg (0.009–0.018 wt.%) lead to compacted graphite (CG). Further, many elements other than O and S when present even as traces lead to degenerate forms of graphite, that is, neither lamellar nor spheroidal. Values of their maximum permissible content for obtaining SG irons have been reviewed by Lux [1]. Sorting of trace elements has been proposed [2, 3] for describing their effect on spheroidal graphite growth:

(i) reducing the effectiveness of Mg, for example, O, S, Se, Te, and Ti;

(ii) altering graphite growth, for example, Al, As, Bi, Cd, Cu, Pb, Sb, and Sn;

(iii) promoting degenerate graphite in heavy-section castings, for example, Ce and Ca.

Interest has been put for long on graphite chemistry as it may be expected that modifiers get incorporated into the graphite lattice [1]. For such a purpose, the most usual means as electron probe or energy dispersive analyzers often have too poor detection limits. Francis [4] used chemical analysis of extracted graphite and reported that many elements could be detected in graphite. Auger electron spectroscopy (AES) has also been used, but generally it only gives information on the interface and not on the bulk of the phases. Although proton emission has been successfully used [5, 6], the most potential means thanks to its high sensitivity appeared to be secondary ion mass spectrometry (SIMS) that has already been used by a few authors [7–10].

In an attempt to enlighten the effect of some additives and trace elements on graphite growth, experiments have been

TABLE 1: Composition of the investigated alloys (wt.%). Elements added specifically for this study are in bold.

Alloy	C	Si	Mn	P	S	Mg	Cu	Ti	Al	N	Ni	Other
10F2	3.64	2.05	0.11	0.033	0.015	0.037	0.04	—	—	0.0050	0.03	0.003 Bi
8P1-Cu	3.73	2.42	0.45	0.035	0.015	0.033	0.95	—	0.010	0.0041	0.02	0.005 Sn
8P3-Sn	3.49	2.60	0.40	0.035	0.015	0.033	0.86	—	0.006	0.0047	0.02	0.024 Sn
9P3-Sb	3.52	2.24	0.82	0.038	0.012	0.035	1.08	0.022	0.011	0.0038	0.04	0.005 Sb
12P3-Ti	3.65	1.98	0.37	0.026	0.013	0.039	0.85	0.36	<0.010	0.0033	0.07	—

carried out with a standard cast iron and four grades with about 1 wt.% Cu and additions of Sb, Sn, or Ti. These alloys have been remelted and resolidified in graphite crucibles so as to saturate the melt in carbon, much in line with the work by Geilenberg et al. [11, 12]. Primary graphite precipitates have been characterized by optical and scanning electron microscopy and analyzed with SIMS. This work provides also a detailed comparison of the present results to the literature information.

2. Experimental Details

All melts were prepared as previously described [13, 14]. Alloying of the melts was performed by extra additions of Cu, FeMn, FeTi, Sn, and/or Sb to a standard cast iron that will be called reference alloy in the following. The alloys were cast in standard keel-blocks representative of small-section mould castings and generally used for materials testing as described elsewhere [15]. The final composition of the alloys is listed in Table 1. A few other additional elements were found in some of the melts: B (0.0059 wt.%) in the reference alloy (10F2), Cr (0.03 wt.%) in 8P1-Cu and 8P3-Sn, Zr (at most 0.005 wt.%) in 9P3-Sb, and Mo (0.01 wt.%) in all four alloys with specific additions.

These alloys were remelted in graphite crucibles (crucibles ALPHA AR6247 designed for chemical analysis of oxygen and nitrogen) by heating to 1300°C and held at that temperature for 10 min. This led to volatilization of the magnesium added for spheroidization and to carbon saturation of the liquid (see Figure 1). The samples were then cooled to 1180°C in about 10 min at a cooling rate of 25°C/min and maintained at that temperature for 20 min. During the stages of cooling from 1300°C and holding at 1180°C, primary graphite precipitates were expected to nucleate and grow along the crucible walls. Finally, the crucibles were extracted from the furnace and quenched with air blowing which led to rapid solidification of the remaining melt at a rate of about 250°C/min. The samples were then vertically cut and prepared for metallographic observation, including optical and scanning electron (SEM) microscopy.

SIMS analyses were performed on a modified CAMECA IMS-6f equipped with a gallium liquid metal ion gun. Although the Ga⁺ source is able to reach a good lateral resolution better than 100 nm in some cases [16], its use is limited due to low ion yield. In order to achieve a sensitivity enhancement under Ga⁺ bombardment, the measurements were assisted with oxygen flooding ($P = 10^{-6}$ mbar) as described by Frache et al. [17]. In such conditions, the lateral resolution of the SIMS probe remains better than 1 μm.

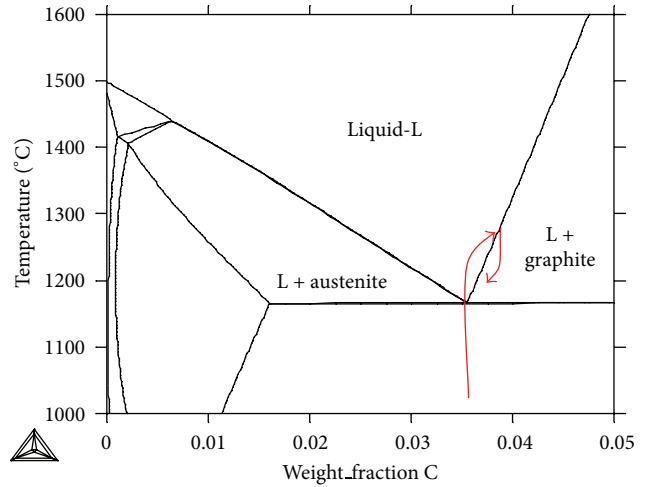


FIGURE 1: Fe-C isopleth section of the Fe-C-Si diagram at 2.5 wt.% Si. The arrows indicate the temperature-composition path followed by the material upon melting, holding at 1300°C, and then cooling to and holding at 1180°C.

A Ga⁺ beam (25.5 keV) was focused down to 500 nm in diameter with an intensity of 150 pA and was scanned across an area of (50 × 50) μm². Elements were analyzed as positive ions. The counting times were 20 s for ¹²C, ²⁴Mg and ²⁵Mg, the three silicon isotopes, ⁵²Cr, ⁵⁴Fe and ⁵⁶Fe, and ⁵⁵Mn and 40 s for ⁴⁸Ti, ⁶³Cu and ⁶⁴Cu, ¹¹⁹Sn, ¹²⁰Sn, and ¹²¹Sb. The definition of the images was 256 × 256 pixels. The different images were acquired successively, from the lowest (12 for carbon) to the highest (121 for Sb) atomic mass giving the plane 1 for each element studied. Then new successive series of acquisition were performed, giving planes 2, 3, ..., 8. For elements present as traces (for instance Sb, and Sn), the signal obtained for all planes (from plane 1 to 8) was accumulated in order to increase the statistics of the measurements. For all the other elements present in higher quantities, the signal from only one plane was high enough to be meaningful. The detection limit was estimated to a few tens of ppm for every element.

SIMS images were complemented with records of the variation of the secondary ion intensities across graphite lamellae (line scans). This was performed by integrating the intensities measured from one or several planes (for Sn and Sb) over 10 pixels in width, that is, about 2 μm for the conditions used in the present study.

Finally, SIMS quantification of trace element concentrations in the iron-rich matrix was based on relative sensitivity

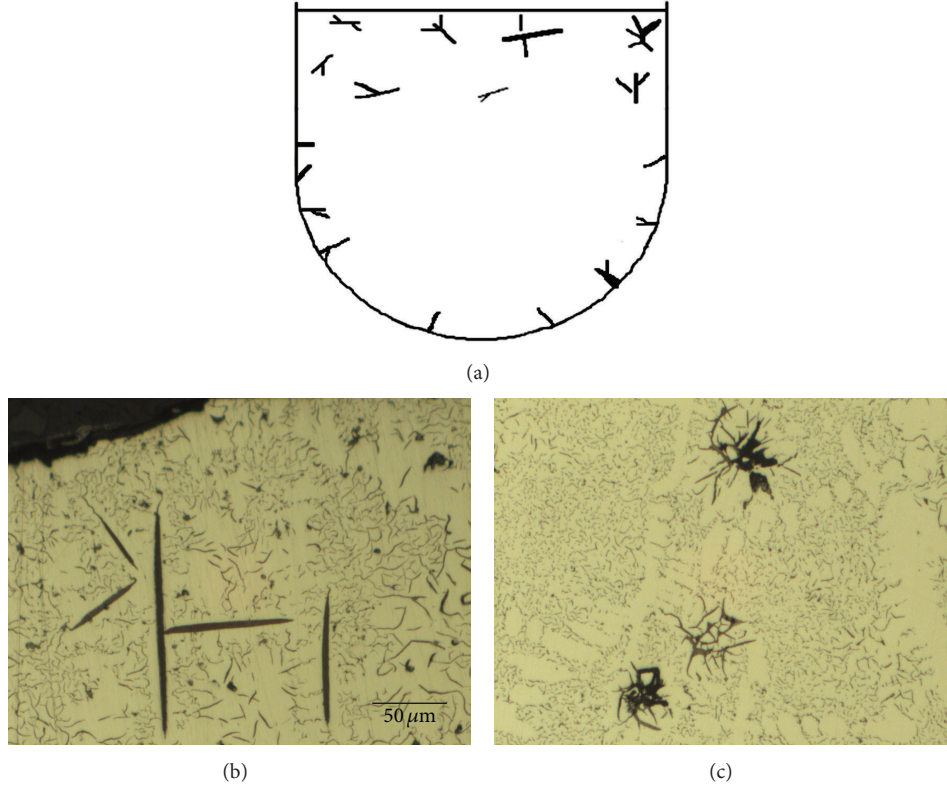


FIGURE 2: Schematic section of the samples showing the location of primary graphite lamellae (a) and optical micrograph at the top (b) and middle (c) of the vertical section of the reference 10F2 sample. The scale is the same for both micrographs.

factors (RSF) derived from four standard iron-base alloys with certified compositions. The RSF_X factor for element X is given by $RSF_X = C_X \times (I_{Fe}/I_X)$ where C_X is the concentration of trace species X, I_X and I_{Fe} are the secondary ion intensities measured, respectively, for element X and for iron used as reference element. The RSFs were derived from the slope of the straight line $I_X/I_{Fe} = f(C_X)$ for Al, Cu, Cr, Mn, Si, Sb, Sn, and Ti. Because the standards do not contain magnesium, the determination of RSF_{Mg} was not possible. Nevertheless, the Mg content was estimated by assuming that RSF_{Mg} was equal to RSF_{Ti} [18].

3. Results

As schematically illustrated in Figure 2(a), the vertical section of every sample showed some large graphite precipitates attached along the crucible walls, but most of these precipitates accumulated close to the top surface of the samples. As an example, Figure 2(b) presents part of the top surface of the reference alloy. In the remaining volume of the samples, much smaller primary precipitates of graphite were observed and most of the material is essentially composed of austenite dendrites and eutectic with undercooled graphite; see Figure 2(c). The large precipitates of graphite may without doubt be associated to primary deposition of this phase, suggesting that after nucleation and growth on the crucible walls they detached and floated due to the density difference between graphite and liquid iron. The finer solidification

structures seen in the remaining of the materials have certainly been formed after the crucible was withdrawn out of the furnace. Accordingly, emphasis will be put in the following on the large graphite precipitates.

Figure 3 shows a characteristic optical micrograph of primary graphite precipitates for each of the four alloys with specific additions. Comparing to Figure 2(b), the effect of Cu seems limited to a very slight thickening of the lamellae while this phenomenon appeared much more pronounced after Sn addition. The most impressive effect relates to the alloy with Sb that led to a few thick lamellae but mainly to rounded agglomerates. Finally, Ti had apparently a significantly different effect in that it greatly reduced graphite nucleation and growth; namely, much less primary graphite precipitates could be observed on the metallographic section when compared to the four other alloys.

In most cases, the graphite lamellae observed in the reference alloy have smooth edges and a more or less constant thickness that may be indicative of a monotonous growth. Bulk graphite appears smooth as illustrated in Figure 4 where an example of an SEM image is associated with SIMS maps of C, Fe, Si, Mg, and Cu. The observed graphite did not contain significant amounts of Fe and Cu, but little Si and a very homogeneous distribution of Mg. It was seen that this latter element appeared as well in enriched spots containing also Mn (not shown in the figure) but outside the graphite lamellae. These are certainly oxide particles similar to those mentioned in other previous studies [10, 19].

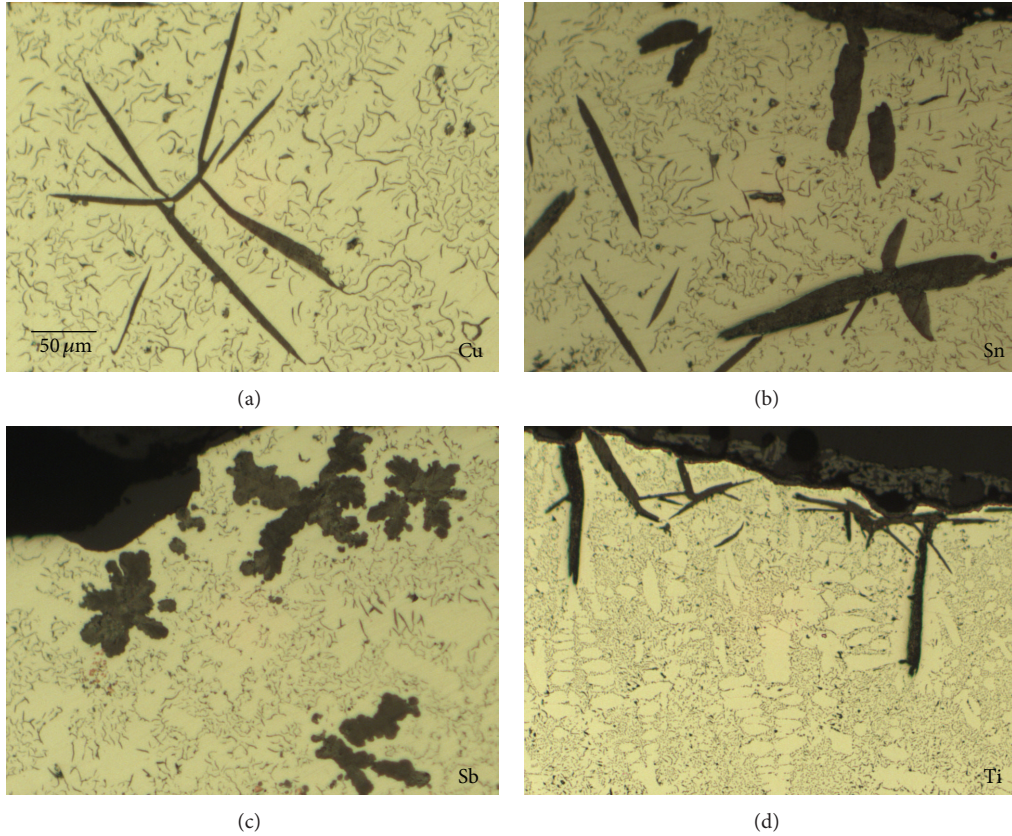


FIGURE 3: Optical micrographs of the upper sample surface of all four alloys with specific additions. The scale is the same for all micrographs.

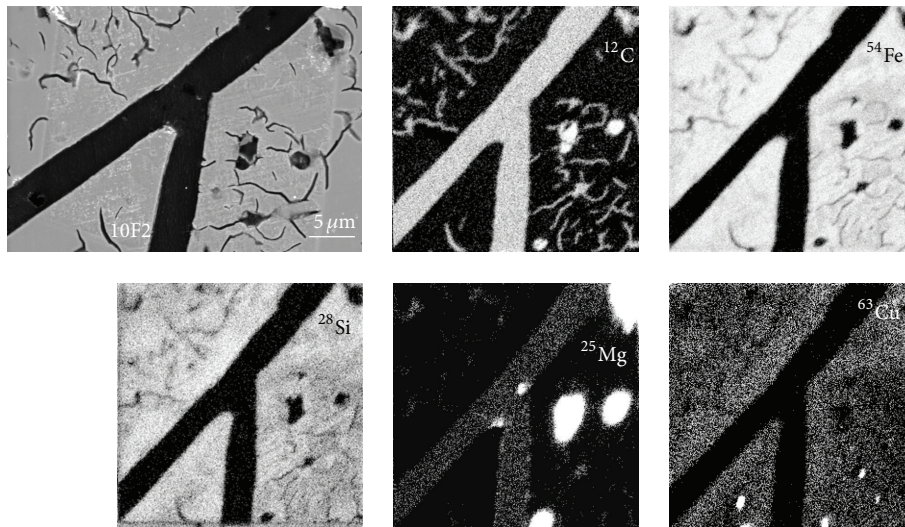


FIGURE 4: SEM micrograph of a graphite precipitate in the reference 10F2 alloy and SIMS maps (logarithmic scale) of C, Fe, Si, Mg, and Cu.

Sometimes, branched lamellae presenting a perturbed bulk graphite structure could also be seen in the reference alloy as illustrated in Figure 5. The SEM micrograph shows bulk graphite to present an irregular surface on the section while SIMS maps of Si and Fe display irregular distribution of these elements. Mn showed an inhomogeneous distribution as Si and Fe while Mg remained homogeneous (maps not

shown in the figure). It is worth stressing that the enriched areas in Si and Fe in the bulk graphite are more or less aligned in a layered structure parallel to the long axis of the lamellae.

Figure 6 shows a typical example of a graphite lamella for each of the four alloys with specific additions together with SIMS maps of C and Si. Carbon maps are shown as they make clearer the shape of the graphite precipitates that are

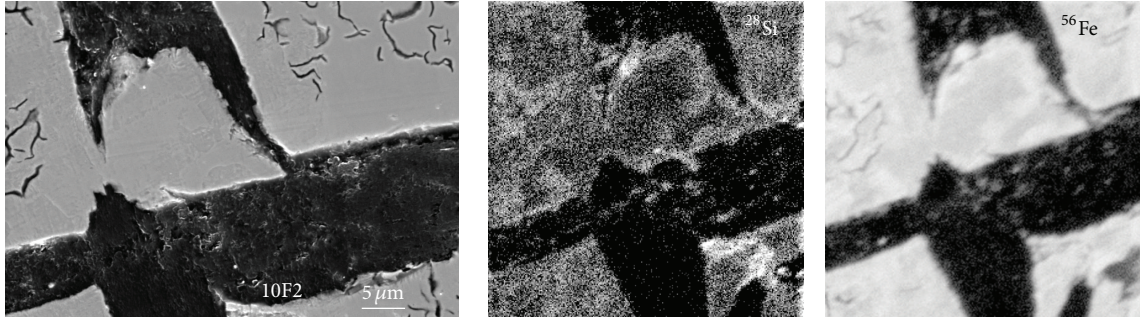


FIGURE 5: SEM micrograph of a perturbed graphite junction and related Fe and Si SIMS maps (logarithmic scale) in the reference 10F2 alloy.

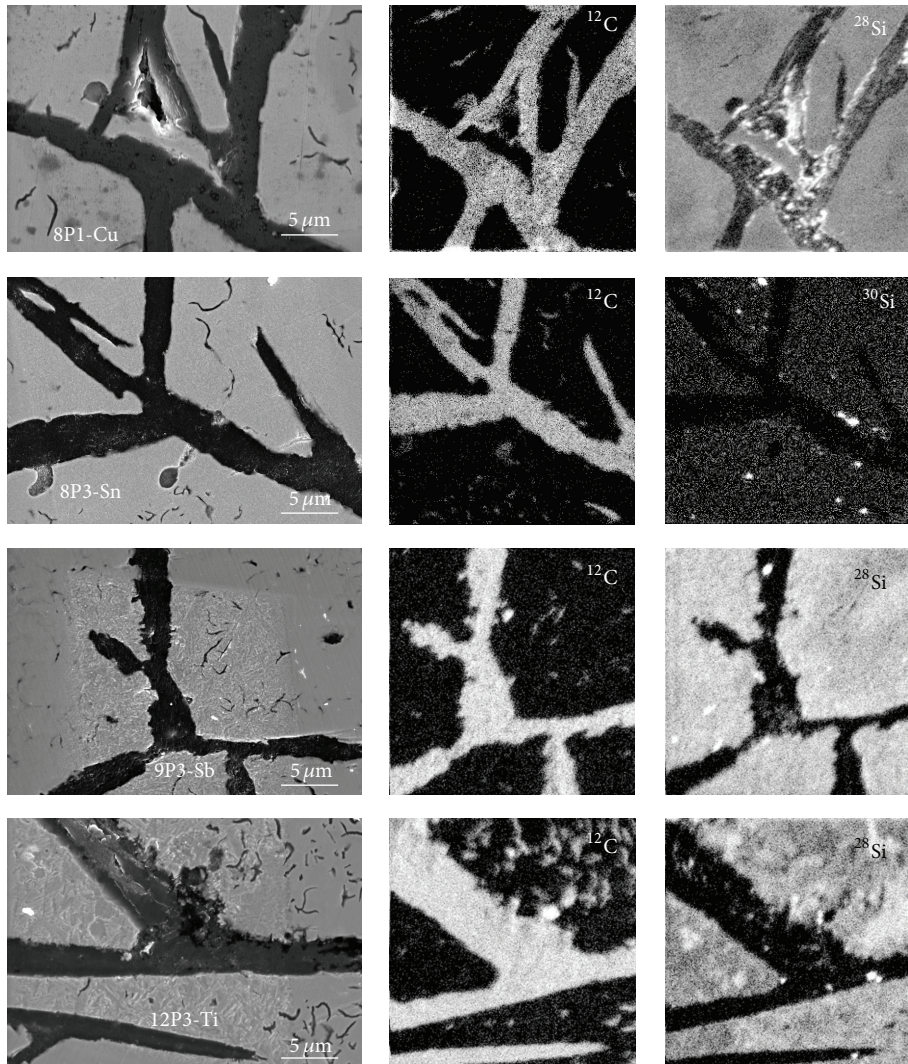


FIGURE 6: SEM micrograph and SIMS maps (logarithmic scale) of C and Si of a graphite precipitate in each of the alloys with specific additions.

seen to be perturbed on the SEM micrographs in Figure 6 whereas the bulk graphite appeared smooth in Figure 4. Silicon showed an inhomogeneous distribution, and this was also the case of iron and manganese (not shown in the figure). There are some spots in the silicon maps, most often outside the graphite lamellae, that are certainly oxides. Further, it

appeared evident that the graphite/matrix interface is much more irregular in these alloys than it was in the reference one. This irregularity increases from Cu to Sn and from Sn to Sb as already pointed out in relation to Figure 3. Graphite precipitates in the Ti-bearing alloy present a less perturbed surface than in the case of alloys with Sn or Sb additions,

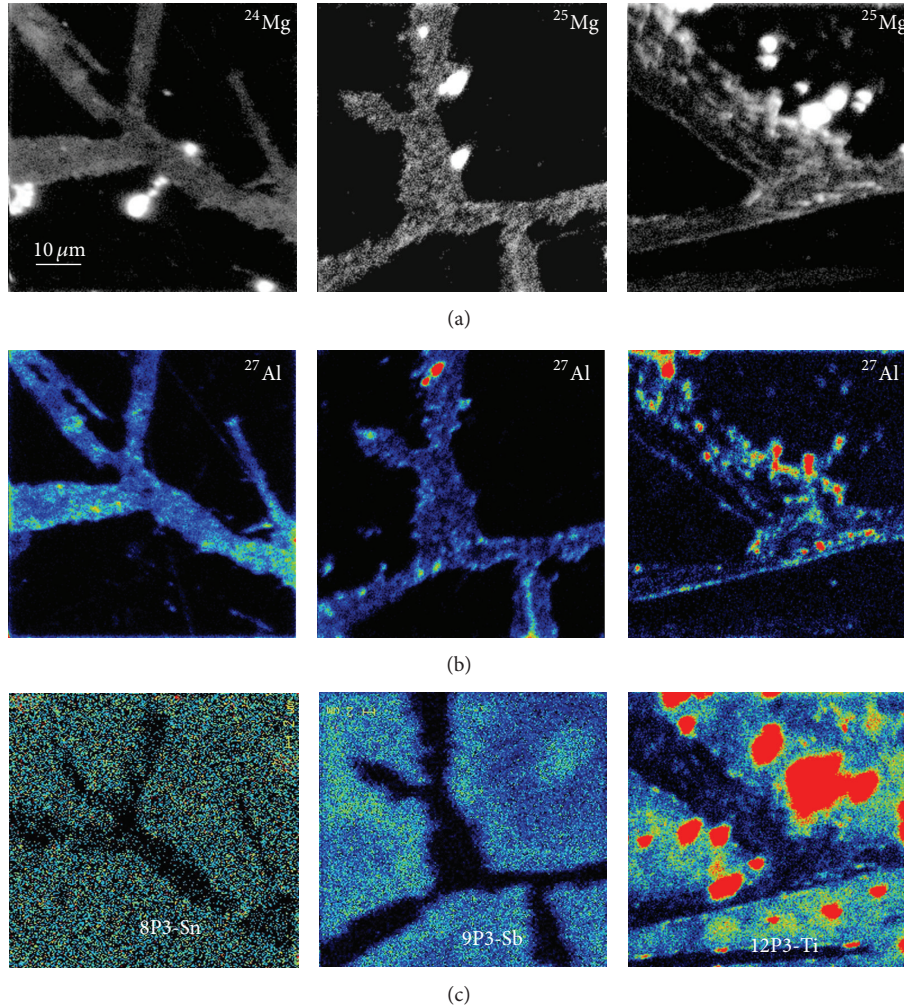


FIGURE 7: SIMS maps of Mg (upper row), Al (middle row) and, respectively, Sn, Sb, and Ti (lower row) for the Sn-, Sb-, and Ti-bearing alloys. For clarity, linear scale images were selected for Al, Sn, and Sb maps and logarithmic scale images for the others. The scale is the same for all images.

but they contain metallic elements as is the case for the other alloys.

Although Mg has decreased during remelting at a level where it cannot act anymore as a spheroidizer, it has been observed that some traces of this element are detected in graphite precipitates in the reference alloy. This was also the case for the alloys with specific additions as seen with the maps in the upper row of Figure 7 for the Sn-, Sb-, and Ti-bearing alloys. Similarly, aluminum that is added at a very low level through inoculation is anyway easily detected by SIMS as illustrated in Figure 7, second row. Both Mg and Al appear nonhomogeneously distributed within graphite, generally at a low level but sometimes also as spots though most of these latter are located outside the precipitates. A layered structure of the enriched areas as in Figure 5 may be guessed in the images of the Ti-bearing alloy.

In the bottom row of Figure 7, a map of Sn, Sb, and Ti is also shown for the Sn-, Sb-, and Ti-bearing alloys, respectively. It is seen that Sn and Sb appear at very low level in graphite with respect to the matrix and that no built-up of

these elements could be detected at the graphite matrix interface. Ti as well is present at a low level in graphite with a heterogeneous distribution but appears mainly as spots of presumably oxide particles outside graphite. Similarly, although not shown, no build-up of copper could be found in any of the mappings of this element.

In order to exemplify the lack of spike at the interface between primary graphite and matrix, line scans were drawn from the SIMS images. Figure 8 compares such scans for the reference and the Sb-bearing alloys. The variations along the profiles outside the lamellae are essentially due to the fine eutectic developed during rapid cooling. At the micron scale, that is, the resolution of the SIMS probe in the present conditions, no spike in any of the alloying or trace elements could be observed at the outer surface of primary graphite precipitates. The most important information obtained from these graphs is that the variations in low-level elements (Mg, Cu, and Si) within graphite are much more pronounced in the alloy with specific additions than in the reference one.

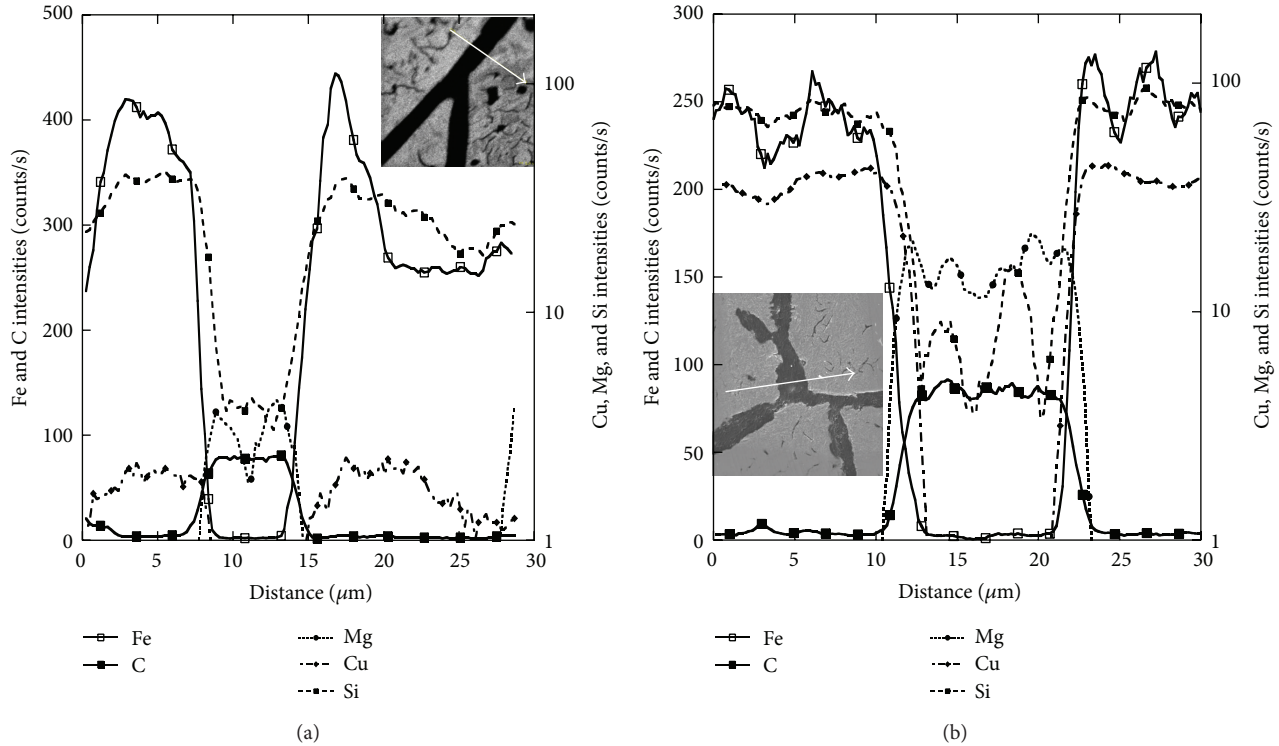


FIGURE 8: Evolution of SIMS intensities through graphite along the arrow indicated on the SEM image for the reference alloy (a) and the Sb-bearing one (b).

Finally, SIMS measurements in the iron-rich matrix have been made quantitative for some elements following the procedure described in Section 2. Though this procedure does not apply to graphite which may have a response to ion bombardment different to that of the iron-rich matrix, the values obtained have been used for comparison with the literature data. When the concentration of an element was not homogeneous inside graphite, the maximal concentration was selected. Table 2 lists the average amount of the elements that could be measured in graphite, as well as corresponding values reported by Fidos [7] from SIMS results and Francis [4] from chemical analyses. Al and Mg that are residuals of spheroidization and inoculation treatments enter in graphite at very low levels, generally much lower than those reported by Fidos and Francis. Si is present in graphite at a level of a few tenths of per cent, while Mn varies from one sample to another from traces to low level at 0.12 wt.%. The contents in these latter elements are within the range reported by Fidos and Francis. When copper was not added to the alloy (10F2), it is found at a very low level as also observed by Francis. For the other alloys in which Cu was added at a level of 1 wt.%, it is seen that this element enters graphite in varying amounts, from 100 to several hundreds of ppm. The other elements studied in this work enter in graphite as traces at a level lower than 100 ppm for Sn and Ti and lower than 10 ppm for Sb.

4. Discussion

The results presented above show that at least some elements affecting spheroidal growth are also effective in altering

TABLE 2: Concentrations of trace elements in graphite for the five alloys studied (wt.%) and data from the literature for SG or LG cast iron [4, 7].

	Al	Si	Mn	Cu	Mg	Others
10F2	n.d.	0.658	0.007	0.001	0.001	
8P1-Cu	0.012	0.13	0.039	0.060	0.0001	
8P3-Sn	0.024	1.94	0.119	0.086	n.d.	0.008 Sn
9P3-Sb	0.061	0.69	0.086	0.013	0.004	0.0009 Sb
12P3-Ti	0.0003	0.464	0.004	0.008	0.012	0.003 Ti
[7] SG	0.015–0.8	0.12–3.0	0.01–0.15		0.17–0.19	
[7] LG	0.4–4.0	0.5–7.3	0.1–0.5		0.03–0.17	
[4] SG	0.025	0.50	0.001	0.001	0.03	0.003 Ti
[4] LG	0.01	0.015	0.002	0.003	0.008	

n.d.: not determined.

lamellar growth. The possible mechanisms are discussed below considering successively the three following items: (i) presence of foreign atoms in graphite; (ii) redistribution of foreign atoms at the outer surface of graphite; and (iii) intercalation and spot alignment.

4.1. Presence of Foreign Atoms in Graphite. As mentioned in the introduction, the review performed by Lux [1] in the early 70s showed that the presence of foreign elements within graphite in cast irons has been reported since long. This was most often evidenced by chemical analysis of extracted graphite particles and of the ash obtained from them, for example, by Francis [4]. Use of other methods such as

autoradiography to locate elements within graphite as done by Hillert and Lindblom [20] proved not to be evident as discussed by Olette et al. [21] because of the penetration distance of the ray emitted by the isotopes. Using the more sensitive and accurate SIMS technique, Franklin and Stark [9, 10] and Fidos [7, 8] showed that even and smooth distribution of foreign elements may be observed within graphite precipitates. By simulation, Fidos [7, 8] could render his SIMS analyses semiquantitative. He then showed that the total amount of foreign species can go up to about 8.2 wt.% at the edge of graphite particles when it is only 0.2 wt.% in the interior [7, 8]. Also, foreign elements in bulk SG graphite often appear as spots, for example, Fe-rich particles observed by metallography when large enough [1] or by Auger mapping [19] and Ti-rich, Ca-rich, and Mg-rich particles that could be oxides observed by SIMS [10].

The present results do confirm that many elements enter into graphite, either homogeneously or heterogeneously distributed or else tight in enriched particles. It has been observed that in the absence of any of the elements considered in the present investigation (Cu, Ti, Sn, and Sb), the distribution of metallic elements in graphite of the reference alloy appears in general even. In turn, it was observed that in alloys with specific additions, foreign elements were most generally distributed unevenly and associated with perturbed appearance of bulk graphite in SEM and wavy graphite/matrix interfaces. This conclusion may be in close relationship with the trend that, at given cooling conditions, increasing alloy purity leads graphite to grow as very regularly shaped plates rather than as curved lamellae as reported by Ruth and Turpin [22]. In the present work, it was found that the effect of added species increases as Cu, Ti, Sn, and Sb.

4.2. Redistribution of Elements at Graphite Interface. A striking feature of the present results is that none of the added elements considered in this work could be detected within graphite at high level and no enrichment could be noted at the outer graphite surface. From the works he reviewed, Lux [1] concluded that the absence of any enrichment in nodularizing elements in the vicinity of the nodule-metal interface provided a clear evidence for the direct formation of nodules from the melt. Using AES experiments, Qin and Zu [23] arrived to the same conclusion as Lux [1] and considered that elements rejected from graphite when growing separately are rapidly redistributed within the whole melt by diffusion. This appears to be the case as well in the present work and, accordingly, the observed shape changes are not related to any significant solute piling-up at the graphite-melt interface. Following Francis [4] it may be inferred that solute pile-up at the graphite outer surface as sometimes reported [24–26] results either from two-phase eutectic growth or from graphite growth in solid state at lower temperature as a process we suggest resembling grain boundary segregation.

4.3. Intercalation and Spot Alignment. Using SIMS on LG, Franklin and Stark [10] noticed oxygen to be uniformly distributed in graphite while the S signal showed a periodicity that they associated with the substructure of graphite flakes. Such a substructure that consists of laths stacked on each

other has been detailed since long for both SG and LG [27]. From their results, Franklin and Stark [10] concluded that it is O rather than S that adsorbs on the prism plane while S segregates at the interface between laths. Using TEM results, intercalation between laths of other foreign species such as Ce has been suggested by Purdy and Audier for LG and SG [28] and by Miao et al. for SG [29]. These latter authors proposed that intercalation layers are associated with the occurrence of crystalline faults within graphite. In the present work, intercalation at the scale of a few atoms width could not be investigated but instead alignment of particles could be observed in some cases that are guessed to relate to lath stacking. Moreover, it has been noticed that addition of the studied specific elements affects the stacking appearance—apparent quality—of graphite laths with the bulk graphite appearing less compact than in the reference alloy. It may be claimed that the added elements do enter graphite by intercalating between laths. This could lead to a more faulted stacking of laths accounting for the more foliated aspect of the graphite precipitates. Such a correlation is certainly worth of further investigation.

5. Conclusion

As reported since long, graphite in cast irons contains small but definite amounts of several elements. While their distribution seems homogeneous in general for the reference alloy investigated, it was found to be inhomogeneous in the grades containing Cu and with additions of Sn, Sb, and Ti. Further, it was observed that the graphite precipitates in the alloys with specific additions present a disturbed aspect in the bulk and a wavy interface with the matrix. These latter observations were most marked with addition of Sb which gives rounded precipitates together with lamellas and with Sn that significantly increases the average width of the lamellae. SIMS mapping did not evidence any build-up of added elements around graphite precipitates, and this observation suggests that additives and trace elements affect graphite growth at an atomic level, for example, by perturbing its crystalline structure.

References

- [1] B. Lux, “On the theory of nodular graphite formation in cast iron—part I: experimental observations of nodular graphite formation during the solidification of cast iron melts,” *Giessereiforschung in English*, vol. 22, pp. 65–81, 1970.
- [2] H. D. Merchant, “Solidification of cast iron—a review of literature,” in *Proc. Recent Research on Cast Iron*, H. H. Merchant, Ed., pp. 1–100, ASM, New York, NY, USA, 1964.
- [3] A. Javaid and C. R. Loper, “Production of heavy-section ductile cast irons,” *AFS Transactions*, vol. 103, pp. 135–150, 1995.
- [4] B. Francis, “Heterogeneous nuclei and graphite chemistry in flake and nodular cast irons,” *Metallurgical Transactions A*, vol. 10, no. 1, pp. 21–31, 1979.
- [5] S. Feng, M. Ren, M. Zhong et al., “Analysis of the distribution of trace elements in nodular cast iron by SPM,” *Nuclear Instruments and Methods in Physics Research B*, vol. 104, no. 1–4, pp. 557–560, 1995.

- [6] S. L. Feng, M. Q. Ren, and M. Zhong, "PIXE analysis of anti-nodularizing elements Al, Pb and Bi in nodular cast iron," *Nuclear Instruments and Methods in Physics Research B*, vol. 109-110, pp. 584–586, 1996.
- [7] H. Fidos, "A study of the graphite morphology in nodular cast iron," *FWP Journal*, vol. 17, no. 10, pp. 9–54, 1977.
- [8] H. Fidos, "Structural analysis of a graphite nodule and surrounding halo in ductile iron," *FWP Journal*, vol. 22, no. 9, pp. 11–62, 1982.
- [9] S. E. Franklin and R. A. Stark, "Application of secondary ion mass spectrometry to study of graphite morphology in cast iron," *Metal Science*, vol. 18, no. 4, pp. 187–200, 1984.
- [10] S. E. Franklin and R. A. Stark, "Further use of secondary ion mass spectrometry in the study of graphite morphology control in cast irons," in *The Physical Metallurgy of Cast Iron, Mat. Res. Soc. Symp. Proc.*, H. Fredriksson and M. Hillert, Eds., vol. 34, pp. 25–35, Norh-Holland, New York, NY, USA, 1985.
- [11] W. Patterson, H. Geilenberg, and B. Lange, "Anwachsversuche an Graphit-Impfkristallen aus kohlenstoffgesättigten Eisen-schmelzen," *Giesserei-Forschung*, vol. 26, p. 1218, 1974.
- [12] H. Geilenberg and B. Lange, "Growth experiments with graphite seed crystals from iron melts saturated in carbon," in *The Metallurgy of Cast Iron*, B. Lux, I. Minkoff, and F. Mollard, Eds., pp. 529–543, Georgi Publishing company, St Saphorin, Switzerland, 1975.
- [13] I. Asenjo, J. Lacaze, P. Larrañaga, S. Méndez, J. Sertucha, and R. Suárez, "Microstructure investigation of small-section nodular iron castings with chunky graphite," *Key Engineering Materials*, vol. 457, pp. 52–57, 2011.
- [14] N. Valle, K. Theuwissen, J. Sertucha, and J. Lacaze, "Effect of various dopant elements on primary graphite growth," *IOP Conference Series: Materials Science and Engineering*, vol. 27, Article ID 012026, 2012.
- [15] J. Serrallach, J. Lacaze, J. Sertucha, R. Suárez, and A. Monzón, "Effect of selected alloying elements on mechanical properties of pearlitic nodular cast irons," *Key Engineering Materials*, vol. 457, pp. 361–366, 2011.
- [16] J. M. Chabala, R. Levi-Setti, and Y. L. Wang, "Practical resolution limits of imaging microanalysis with a scanning ion microprobe," *Applied Surface Science*, vol. 32, no. 1-2, pp. 10–32, 1988.
- [17] G. Frache, B. E. Adib, J.-N. Audinot, and H.-N. Migeon, "Evaluation of ionization yields under gallium bombardment," *Surface and Interface Analysis*, vol. 43, no. 1-2, pp. 639–642, 2011.
- [18] R. G. Wilson, F. A. Stevie, and C. W. Magee, *Secondary Ion Mass Spectrometry, A Practical Handbook for Depth Profiling and Bulk Impurity Analysis*, John Wiley & Sons, New York, NY, USA, 1989.
- [19] W. C. Johnson and H. B. Smartt, "The role of interphase boundary adsorption in the formation of spheroidal graphite in cast iron," *Metallurgical Transactions A*, vol. 8, no. 4, pp. 553–565, 1977.
- [20] M. Hillert and Y. Lindholm, "The growth of nodular graphite," *The Journal of the Iron and Steel Institute*, vol. 148, pp. 388–390, 1954.
- [21] M. Olette, A. Kohn, and P. Kozakevitch, "Contribution à l'étude du mécanisme de formation du graphite primaire dans les fontes," *Fonderie*, vol. 229, pp. 87–99, 1965.
- [22] J. C. Ruth and M. Turpin, "Structures de solidification unidirectionnelle des eutectiques fer-carbone," *Mémoires Scientifiques Revue de Métallurgie*, vol. 66, pp. 633–640, 1969.
- [23] Z. Qin and Z. Zu, "Dynamic segregation of sulphur in cast iron," *Acta Metallurgica Sinica*, vol. 2, pp. 202–204, 1989.
- [24] W. C. Johnson and B. V. Kovacs, "The effect of additives on the eutectoid transformation of ductile iron," *Metallurgical Transactions A*, vol. 9, no. 2, pp. 219–229, 1978.
- [25] B. V. Kovacs, "Pearlite stabilization in cast irons," *AFS Transactions*, vol. 89, pp. 79–96, 1980.
- [26] B. C. Liu, T. X. Li, Z. J. Rue, X. Y. Yang, E. Q. Huo, and C. R. Loper, "The role of antimony in heavy-section ductile iron," *AFS Transactions*, vol. 98, pp. 753–757, 1990.
- [27] M. J. Hunter and G. A. Chadwick, "Structure of spheroidal graphite," *The Journal of the Iron and Steel Institute*, vol. 210, pp. 117–123, 1972.
- [28] G. R. Purdy and M. Audier, "Electron microscopical observations of graphite in cast irons," in *The Physical Metallurgy of Cast Iron, Mat. Res. Soc. Symp. Proc.*, H. Fredriksson and M. Hillert, Eds., vol. 34, pp. 13–23, Norh-Holland, New York, NY, USA, 1985.
- [29] B. Miao, K. Fang, W. Bian, and G. Liu, "On the microstructure of graphite spherulites in cast irons by TEM and HREM," *Acta Metallurgica et Materialia*, vol. 38, no. 11, pp. 2167–2174, 1990.