



HAL
open science

Red coralline algae assessed as marine pH proxies using 11B MAS NMR

M. Cusack, N.A. Kamenos, C. Rollion-Bard, G. Tricot

► **To cite this version:**

M. Cusack, N.A. Kamenos, C. Rollion-Bard, G. Tricot. Red coralline algae assessed as marine pH proxies using 11B MAS NMR. *Scientific Reports*, 2015, 5, pp.8175-1 - 8175-3. 10.1038/srep08175 . hal-01168275

HAL Id: hal-01168275

<https://hal.science/hal-01168275>

Submitted on 18 May 2020

HAL is a multi-disciplinary open access archive for the deposit and dissemination of scientific research documents, whether they are published or not. The documents may come from teaching and research institutions in France or abroad, or from public or private research centers.

L'archive ouverte pluridisciplinaire **HAL**, est destinée au dépôt et à la diffusion de documents scientifiques de niveau recherche, publiés ou non, émanant des établissements d'enseignement et de recherche français ou étrangers, des laboratoires publics ou privés.



OPEN

Red coralline algae assessed as marine pH proxies using ^{11}B MAS NMR

SUBJECT AREAS:
BIOGEOCHEMISTRY
CLIMATE SCIENCESM. Cusack¹, N. A. Kamenos¹, C. Rollion-Bard² & G. Tricot³¹School of Geographical and Earth Sciences, University of Glasgow, Glasgow, G12 8QQ, UK, ²Institut de Physique du Globe, Paris, France, ³LASIR University of Lille 1, Villeneuve d'Ascq, France.Received
7 July 2014Accepted
12 January 2015Published
2 February 2015Correspondence and
requests for materials
should be addressed to
M.C. (maggie.
cusack@glasgow.ac.
uk)

Reconstructing pH from biogenic carbonates using boron isotopic compositions relies on the assumption that only borate, and no boric acid, is present. Red coralline algae are frequently used in palaeoenvironmental reconstruction due to their widespread distribution and regular banding frequency. Prior to undertaking pH reconstructions using red coralline algae we tested the boron composition of the red coralline alga *Lithothamnion glaciale* using high field NMR. In bulk analysed samples, thirty percent of boron was present as boric acid. We suggest that prior to reconstructing pH using coralline algae 1) species-specific boron compositions and 2) within-skeleton special distributions of boron are determined for multiple species. This will enable site selective boron analyses to be conducted validating coralline algae as palaeo-pH proxies based on boron isotopic compositions.

Concerns about current and projected ocean acidification as a consequence of oceanic uptake of anthropogenic atmospheric CO_2 ¹, heighten our need to understand past oceanic pH. Boron isotopic composition ($\delta^{11}\text{B}$) of marine biogenic carbonates has been considered an attractive pH proxy for several decades since the early assessments using foraminifera^{2–3}. As a marine pH proxy, $\delta^{11}\text{B}$ has already provided insight using several marine biomineralisers including much further work on foraminifera^{4–9}, corals^{10–14} and brachiopods^{15–17}.

Free-living (maerl / rhodoliths) and encrusting (crustose coralline algae) red coralline algae are attractive marine pH proxy organisms since they have a global pole to pole distribution providing an outstanding spatial data source that spans a range of water temperatures and salinities. In addition, the growth mechanism of coralline algae whereby new growth occurs on top of old provides a rich temporal record^{18–19}. The high Mg-calcite of coralline algae records ambient seawater temperature^{18,20} with the seasonal growth bands (Figure 1) providing the potential for a pH calendar.

In the ocean, boron exists in two molecular species: trigonal boric acid ($\text{B}(\text{OH})_3$) and tetrahedral borate ($\text{B}(\text{OH})_4^-$). From here on in, boric acid and borate are referred to as B3 and B4 respectively. The ratio of B3 to B4 is sensitive to pH with B3 being more abundant at low pH^{2,6,8,21}. There are two isotopes of B: ^{11}B and ^{10}B with ^{11}B being four times as abundant as ^{10}B . The isotopic fractionation between ^{11}B and ^{10}B in the dissolved species can be represented by the following mass balance:



Boric acid is enriched in ^{11}B relative to borate ion by 27.2‰²². As proportions of $\text{B}(\text{OH})_3$ and $\text{B}(\text{OH})_4^-$ vary, so will the isotopic composition such that $\delta^{11}\text{B}$ in marine carbonates is a function of pH, assuming that only $\text{B}(\text{OH})_4^-$ is incorporated into marine carbonates². For any biomineral proxy organism, this sole incorporation of B4 is the key assumption to be verified^{23–24}. In the case of coralline algae the combination of high resolution spatial and temporal data cannot be exploited until this assumption is checked. If it is the case that only B4 is incorporated into the coralline algal skeleton then the B/Ca ratio and $\delta^{11}\text{B}$ may be used to determine past ocean pH in coralline algae as in some species of planktonic foraminifera⁴ or in coral skeleton^{25–26}. ^{11}B magnetic angle spinning nuclear magnetic resonance (MAS NMR) has proved to be a powerful probe of boron speciation in biogenic carbonates^{10,27}. Compared to previous studies, the experiments reported here have been performed at very high magnetic field (18.8 T), leading to highly resolved spectra with well-separated B3 and B4 regions. Moreover, the experiments have been conducted on a prototype measurement probehead equipped with a B-free stator, leading to ^{11}B background free spectra. For the first time, the combination of high field and ^{11}B background free spectra allows the investigation of the ^{11}B speciation in biogenic carbonate with efficient and standard single pulse acquisitions. The B3/B4 quantification was then derived from standard signal integration whereas previous studies required ^{11}B background signal subtraction¹⁰ or complex signal simulation²⁷ that introduced error in the B3/B4 ratio determination. Thus, high field MAS NMR is applied here

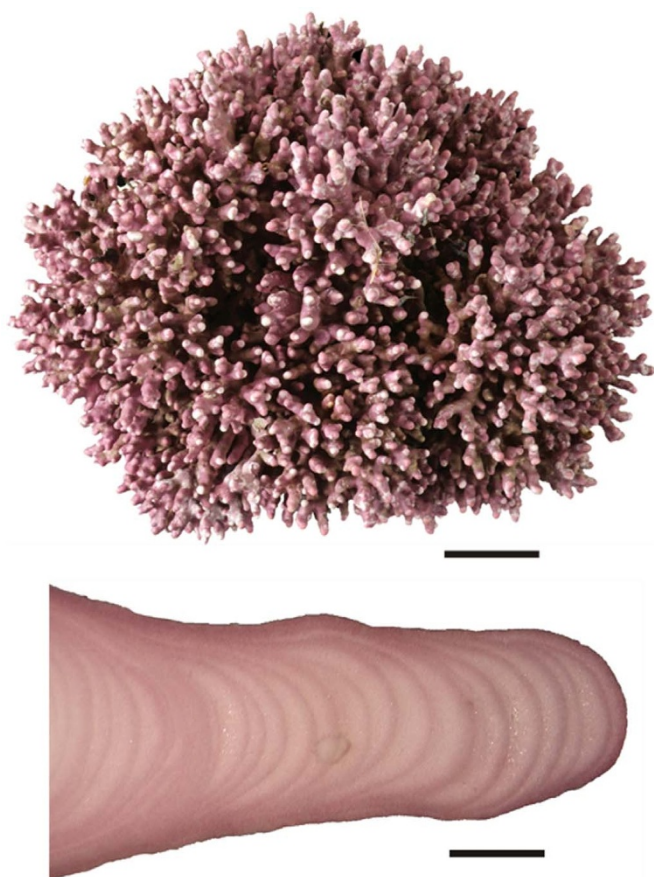


Figure 1 | Thallus and branch of maerl, *Lithothamnion glaciale*. (a) Thallus of *Lithothamnion glaciale* (scale bar = 1 cm), (b) transverse section through a *L. glaciale* branch tip indicating regular banding (scale bar = 1.5 mm).

to red coralline algae as a primary assessment of the suitability of this globally distributed biogenic carbonate as a marine pH recorder.

Results

MAS NMR performed at high field (18.8 T) readily resolves the B3 and B4 signals in *L. glaciale* (Figure 2). In addition to the main B3 (18 ppm) and B4 (2 ppm) signals, a third resonance at 6 ppm can be observed, indicating that a second B4 species is present at low amount inside the samples. In *L. glaciale* with and without epithelium present, boron in the trigonal form (B3) accounts for around 30% of the boron present and B3 is thus present in the calcified high Mg skeleton (Table 1). Boron in the tetragonal forms (B4) account for around 70% with 64% originate from the major B4 unit at 2 ppm and 6% from the minor B4 unit at 6 ppm. This finding indicates that the assumption of only tetrahedral boron (B4) being incorporated into biogenic carbonates required for pH reconstruction is not met on a whole-branch scale in coralline algae, since it is clear that a significant amount of trigonal boron (B3) is present. This incorporation of a significant proportion of B3 has occurred in *L. glaciale* from Loch Sween where the mean annual pH is 8.10. In these conditions, the proportion of B3 to B4 in seawater is around 4:1^{6,817}. Thus, the proportion of B3 in *L. glaciale* does not reflect the direct proportion of B3 relative to B4 in seawater, B4 being majority incorporated into the skeleton. Importantly, lower pH in ocean acidification conditions would increase the proportion of B3 to B4 in seawater.

Discussion

A primary assessment of the pH-reconstruction assumption that boron is incorporated into coralline algae solely in the tetrahedral (B4) form was made using powdered whole branches. Both trigonal

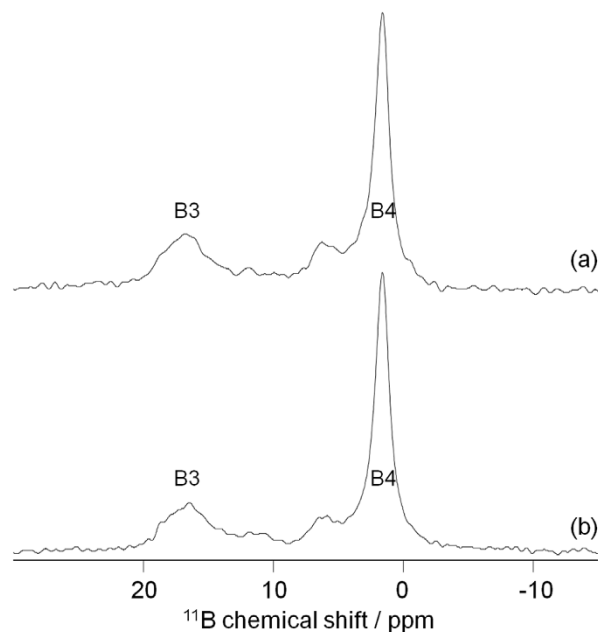


Figure 2 | Magnetic angle spinning nuclear magnetic resonance spectra of *Lithothamnion glaciale*. High field (18.8 T)¹¹B MAS-NMR analyses of two samples of powdered *L. glaciale* (a) with and (b) without epithelium, indicating trigonal (B3) and tetrahedral (B4) boron.

and tetrahedral boron were present; had high-field NMR indicated that all boron was in the tetrahedral form, then *L. glaciale* could then be used in bulk powdered form to determine past oceanic pH. Boric acid is not localised just in the epithelium, but is present in the high Mg skeleton as well. The presence of B3 was already observed in corals and in foraminifera^{9,19}. This presence could account for some of the vital effects in the boron isotopic compositions of biocarbonates, together with an elevation of pH at the sites of calcification²⁸. Indeed, some species of coralline algae can increase their internal pH up to 0.5 pH units in light conditions²⁹ It is clear that a bulk approach cannot be pursued for pH reconstruction and likely indicates that spatially non-selective analysis of within growth band CaCO₃ may also be sampling both B3 and B4. To account for the presence of B3, it is possible to adjust calculations allowing for a 30% B3 presence. However, prior to this, four further checks should be conducted:

1. Test boron composition in other coralline algal species to determine whether *L. glaciale* portrays the exception or the rule.
2. Skeletal spatially-specific testing of *L. glaciale* and other coralline algal species investigating winter and summer growth bands separately since the faster growth rate of summer growth and slower winter growth may result in different rates of B3 incorporation. Faster growth rates in summer occur in tandem with more Mg incorporation¹⁸ and this could be associated with more or less B3 incorporation. Slow winter growth may exclude B3 and thus the calcite deposited during winter may provide a more ideal pH proxy. Understanding this is critical in the light of observations in other organisms where B3 incorporation is not uniform throughout biomineral structures e.g. as in corals¹⁰.
3. Quantification of B3 incorporation in *L. glaciale* grown in different pH environments to determine any pH-dependent variation in B3 incorporation to determine whether B3 is incorporated directly into the skeleton or if B4 is modified to B3 after boron incorporation as suggested by²⁷.
4. Measurement of $\delta^{11}\text{B}$ to test if B3 is incorporated from seawater or is due to a change of B4 after the carbonate precipitation as proposed by²⁷.

Species-specific boron compositions and within-skeleton special distributions of boron are determined for multiple species of

Table 1 | Proportion of trigonal (B3) and tetrahedral (B4) boron in *Lithothamnion glaciale* with (+) and without (-) epithelium

<i>L. glaciale</i>	B3 (%)	B4 (%)
(a) + epithelium	30.3 ± 4.3	(62.7 + 7.0) ± 4.3
(b) - epithelium	27.7 ± 4.6	(66.5 + 5.8) ± 4.6

coralline algae. This will enable site selective boron analyses to be conducted validating coralline algae as palaeo-pH proxies based on boron isotopic compositions.

Methods

Duplicate specimens of a single species of free-living red coralline algae, *Lithothamnion glaciale* were collected from Loch Sween, Scotland 56°01.99'N, 05°36.13'W from 5 m depth using SCUBA. Annual temperature range at the collection site is 6–17°C and average pH is 8.10 (measured *in situ* with YSI EXO2 Sonde equipped with pH probe which was calibrated monthly and drift adjusted).

Branches of two air-dried specimens were brushed to remove any ground in material and powdered using a Retsh MM400 ball mill. One thallus was crushed with the outer epithelium in place while the second thallus had the epithelium removed using a sanding drill (Dremmel Tool) prior to crushing.

¹¹B magic angle spinning nuclear magnetic resonance (MAS-NMR) experiments were carried out at 256.71 MHz on a Bruker Avance III spectrometer. A 3.2 mm probehead, operating at a spinning frequency of 20 kHz and equipped with a Vespel® stator (avoiding the presence of probe background signal in the ¹¹B NMR experiments) has been used. The spectra were acquired with 0.5 μs pulse length (10° pulse angle) and 700 k transients separated by a 0.2 s recycle delay, leading to a complete measuring time of 40 hours. The trigonal (B3) to tetrahedral (B4) ratios were directly extracted from the spectra by standard signal integration and errors were determined from noise signal integration.

- Orr, J. C. *et al.* Anthropogenic ocean acidification over the twenty-first century and its impact on calcifying organisms. *Nature* **437**, 681–686, doi:10.1038/nature04095 (2005).
- Hemming, N. G. & Hanson, G. N. Boron isotopic composition and concentration in modern marine carbonates. *Geochim Cosmochim Acta* **56**, 537–543, doi:10.1016/0016-7037(92)90151-8 (1992).
- Spivack, A. J., You, C. F. & Smith, H. J. Foraminiferal boron isotope ratios as a proxy for surface ocean pH over the past 21 Myr. *Nature* **363**, 149–151, doi:10.1038/363149a0 (1993).
- Yu, J., Elderfield, H. & Hoenisch, B. B/Ca in planktonic foraminifera as a proxy for surface seawater pH. *Paleoceanography* **22** doi:Pa202010.1029/2006pa001347 (2007).
- Kasemann, S. A., Schmidt, D. N., Bijma, J. & Foster, G. L. In situ boron isotope analysis in marine carbonates and its application for foraminifera and palaeo-pH. *Chem Geol* **260**, 138–147, doi:10.1016/j.chemgeo.2008.12.015 (2009).
- Yu, J., Foster, G. L., Elderfield, H., Broecker, W. S. & Clark, E. An evaluation of benthic foraminiferal B/Ca and delta B-11 for deep ocean carbonate ion and pH reconstructions. *Earth Planet Sci Lett* **293**, 114–120, doi:10.1016/j.epsl.2010.02.029 (2010).
- Rollion-Bard, C. & Erez, J. In situ boron isotopic measurements in cultured foraminifera: Implications for delta B-11 vital effects. *Geochim Cosmochim Acta* **74**, A879–A879 (2010).
- Rae, J. W. B., Foster, G. L., Schmidt, D. N. & Elliott, T. Boron isotopes and B/Ca in benthic foraminifera: Proxies for the deep ocean carbonate system. *Earth Planet Sci Lett* **302**, 403–413, doi:10.1016/j.epsl.2010.12.034 (2011).
- Henehan, M. J. *et al.* Calibration of the boron isotope proxy in the planktonic foraminifera *Globigerinoides ruber* for use in palaeo-CO₂ reconstruction. *Earth Planet Sci Lett* **364**, 111–122, doi:10.1016/j.epsl.2012.12.029 (2013).
- Rollion-Bard, C. *et al.* Boron isotopes as pH proxy: A new look at boron speciation in deep-sea corals using ¹¹B MAS NMR and EELS. *Geochim Cosmochim Acta* **75**, 1003–1012, doi:10.1016/j.gca.2010.11.023 (2011).
- Dissard, D. *et al.* Light and temperature effects on δ¹¹B and B/Ca ratios of the zooxanthellate coral *Acropora* sp.: results from culturing experiments. *Biogeosciences* **9**, 4589–4605, doi:10.5194/bg-9-4589-2012 (2012).
- Anagnostou, E., Huang, K. F., You, C. F., Sikes, E. L. & Sherrell, R. M. Evaluation of boron isotope ratio as a pH proxy in the deep sea coral *Desmophyllum dianthus*: Evidence of physiological pH adjustment. *Earth Planet Sci Lett* **349**, 251–260, doi:10.1016/j.epsl.2012.07.006 (2012).
- Reynaud, S., Hemming, N. G., Juillet-Leclerc, A. & Gattuso, J. P. Effect of pCO₂(2) and temperature on the boron isotopic composition of the zooxanthellate coral *Acropora* sp. *Coral Reefs* **23**, 539–546, doi:10.1007/s00338-004-0399-5 (2004).
- Hönisch, B. *et al.* Assessing scleractinian corals as recorders for paleo-pH: Empirical calibration and vital effects. *Geochim Cosmochim Acta* **68**, 3675–3685, doi:10.1016/j.gca.2004.03.0026 (2004).
- Joachimski, M. M., Simon, L., van Geldern, R. & Lecuyer, C. Boron isotope geochemistry of Paleozoic brachiopod calcite: Implications for a secular change in the boron isotope geochemistry of seawater over the Phanerozoic. *Geochim Cosmochim Acta* **69**, 4035–4044, doi:10.1016/j.gca.2004.11.017 (2005).

- Penman, D. E., Hoenisch, B., Rasbury, E. T., Hemming, N. G. & Spero, H. J. Boron, carbon, and oxygen isotopic composition of brachiopod shells: Intra-shell variability, controls, and potential as a paleo-pH recorder. *Chem Geol* **340**, 32–39, doi:10.1016/j.chemgeo.2012.11.016 (2013).
- Lecuyer, C., Grandjean, P., Reynard, B., Albarede, F. & Telouk, P. B-11/B-10 analysis of geological materials by ICP-MS Plasma 54: Application to the boron fractionation between brachiopod calcite and seawater. *Chem Geol* **186**, 45–55, doi:10.1016/j.chemgeo.2002.11.016 (2002).
- Kamenos, N. A., Cusack, M. & Moore, P. G. Coralline algae are global palaeothermometers with bi-weekly resolution. *Geochimica et Cosmochimica Acta* **72**, 771–779 (2008).
- Kamenos, N. A. North Atlantic summers have warmed more than winters since 1353, and the response of marine zooplankton. *Proceedings of the National Academy of Sciences* **107**, 22442–22447, doi:10.1073/pnas.1006141107 (2010).
- Darrenougue, N., De Deckker, P., Payri, C., Eggins, S. & Fallon, S. Growth and chronology of the rhodolith-forming, coralline red alga *Sporolithon durum*. *Mar Ecol Prog Ser* **474**, 105–119, doi:10.3354/meps10085 (2013).
- Hershey, J. P., Fernandez, M., Milne, P. J. & Millero, F. J. The Ionization of Boric Acid in NaCl, Na-Ca-Cl AND Na-Mg-Cl Solutions at 25 Degrees C. *Geochim Cosmochim Acta* **50**, 143–148, doi:10.1016/0016-7037(86)90059-1 (1986).
- Klochko, K., Kaufman, A. J., Yao, W., Byrne, R. H. & Tossell, J. A. Experimental measurement of boron isotope fractionation in seawater. *Earth Planet Sci Lett* **248**, 276–285, doi:10.1016/j.epsl.2006.05.034 (2006).
- Xiao, J., Jin, Z. D., Xiao, Y. K. & He, M. Y. Controlling factors of the delta B-11-pH proxy and its research direction. *Environmental Earth Sciences* **71**, 1641–1650, doi:10.1007/s12665-013-2568-8 (2014).
- Pagani, M., Lemarchand, D., Spivack, A. & Gaillardet, J. A critical evaluation of the boron isotope-pH proxy: The accuracy of ancient ocean pH estimates. *Geochim Cosmochim Acta* **69**, 953–961, doi:10.1016/j.gca.2004.07.029 (2005).
- Liu, Y. *et al.* Instability of seawater pH in the South China Sea during the mid-late Holocene: Evidence from boron isotopic composition of corals. *Geochim Cosmochim Acta* **73**, 1264–1272, doi:10.1016/j.gca.2008.11.034 (2009).
- Douville, E. *et al.* Abrupt sea surface pH change at the end of the Younger Dryas in the central sub-equatorial Pacific inferred from boron isotope abundance in corals (Porites). *Biogeosciences* **7**, 2445–2459, doi:10.5194/bg-7-2445-2010 (2010).
- Klochko, K., Cody, G. D., Tossell, J. A., Dera, P. & Kaufman, A. J. Re-evaluating boron speciation in biogenic calcite and aragonite using B-11 MAS NMR. *Geochim Cosmochim Acta* **73**, 1890–1900, doi:10.1016/j.gca.2009.01.002 (2009).
- Rollion-Bard, C., Chaussidon, M. & France-Lanord, C. Biological control of internal pH in scleractinian corals: Implications on paleo-pH and paleo-temperature reconstructions. *Comptes Rendus Geoscience* **343**, 387–396 (2011).
- Hurd, C. L. *et al.* Metabolically induced pH fluctuations by some coastal calcifiers exceed projected 22nd century ocean acidification: a mechanism for differential susceptibility? *Global Change Biology* **17**, 3254–3262, doi:10.1111/j.1365-2486.2011.02473.x (2011).

Acknowledgments

We thank Stephen Wimperis and Smita Oedra of the School of Chemistry, University of Glasgow for carrying out preliminary NMR analyses. GT acknowledges the financial support of TGIR-RMN-THC Fr3050 CNRS.

Author contributions

M.C. and N.A.K. conceived the project, N.K. prepared the samples, C.R.-B. and G.T. conducted the NMR analyses, N.K. prepared Figure 1 and G.T. prepared Figure 2, M.C. wrote the main manuscript and all authors contributed to the final manuscript.

Additional information

Competing financial interests: The authors declare no competing financial interests.

How to cite this article: Cusack, M., Kamenos, N.A., Rollion-Bard, C. & Tricot, G. Red coralline algae assessed as marine pH proxies using ¹¹B MAS NMR. *Sci. Rep.* **5**, 8175; DOI:10.1038/srep08175 (2015).



This work is licensed under a Creative Commons Attribution-NonCommercial-ShareAlike 4.0 International License. The images or other third party material in this article are included in the article's Creative Commons license, unless indicated otherwise in the credit line; if the material is not included under the Creative Commons license, users will need to obtain permission from the license holder in order to reproduce the material. To view a copy of this license, visit <http://creativecommons.org/licenses/by-nc-sa/4.0/>