



HAL
open science

Long-term continuous production of H₂ in a microbial electrolysis cell (MEC) treating saline wastewater

Alessandro Carmona Martinez, Eric Trably, Kim Milferstedt, Rémy Lacroix,
Luc Etcheverry, Nicolas Bernet

► **To cite this version:**

Alessandro Carmona Martinez, Eric Trably, Kim Milferstedt, Rémy Lacroix, Luc Etcheverry, et al.. Long-term continuous production of H₂ in a microbial electrolysis cell (MEC) treating saline wastewater. *Water Research*, 2015, 81, pp.149-156. 10.1016/j.watres.2015.05.041 . hal-01167881

HAL Id: hal-01167881

<https://hal.science/hal-01167881>

Submitted on 28 May 2020

HAL is a multi-disciplinary open access archive for the deposit and dissemination of scientific research documents, whether they are published or not. The documents may come from teaching and research institutions in France or abroad, or from public or private research centers.

L'archive ouverte pluridisciplinaire **HAL**, est destinée au dépôt et à la diffusion de documents scientifiques de niveau recherche, publiés ou non, émanant des établissements d'enseignement et de recherche français ou étrangers, des laboratoires publics ou privés.

Appendix. Supplementary data for:

Long-term continuous production of H₂ in a microbial electrolysis cell (MEC) treating saline wastewater

Alessandro A. Carmona-Martínez^a, Eric Trably^{a,*}, Kim Milferstedt^a, Rémy Lacroix^b, Luc Etcheverry^c and Nicolas Bernet^a

^aINRA, UR0050, Laboratoire de Biotechnologie de l'Environnement, Avenue des Etangs, Narbonne, F-11100, France

^b6T-MIC Ingénieries, 4 rue Brindejonc des Moulinais, 31500 Toulouse, France

^cLaboratoire de Génie Chimique, Université de Toulouse, CNRS, 4 allée Emile Monso, 31432 Toulouse, France

*author of correspondence; phone: +33 (0) 4 68 42 51 51; fax: +33 (0)4 68 42 51 60, email to: eric.trably@supagro.inra.fr

Keywords: Biohydrogen, Microbial electrolysis cell, Saline wastewater, Scanning electron microscopy, 454 Pyrosequencing, *Geoalkalibacter*

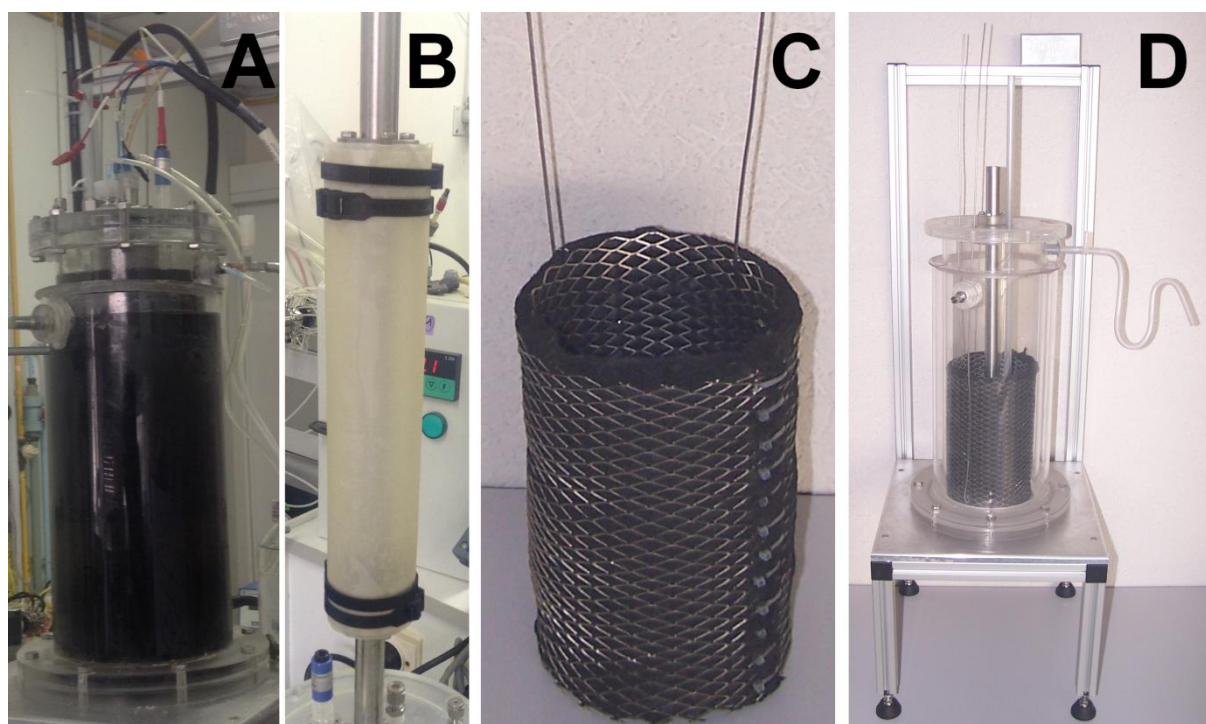


Fig. S1 - A) MEC in operation; B) Anionic membrane folded around an empty cylindrical stainless steel 254SMO tube cathode; C) Folded graphite felt as anode and D) Empty MEC designed and built by project partners at the Laboratoire de Génie Chimique, UMR 5503, Toulouse and 6T-MIC Ingénieries as described by (Rousseau et al. 2013).

1. CE-SSCP fingerprinting of electroactive biofilm samples after 100 days of operation

A Capillary electrophoresis single-strand conformation polymorphism (CE-SSCP) method was used for PCR products fingerprinting. To perform CE-SSCP fingerprinting, one microliter of the appropriate dilution of PCR products was mixed with 18.925 μL of formamide and 0.075 μL of internal standard GeneScan ROX (Applied Biosystems). Samples were heat-denatured at 95°C for 5 min and re-cooled directly in ice for 5 min. CE-SSCP electrophoresis was performed in an ABI Prism 3130 genetic analyzer (Applied Biosystems) in 50 cm capillary tubes filled with 10% glycerol, conformation analysis polymer and corresponding buffer (Applied Biosystems). Samples were eluted at 12kV and 32°C for 30 min (see Fig. S2). CE-SSCP profiles were aligned with an internal standard, ROX, to consider the inter-sample electrophoretic variability. The CE-SSCP profiles (Fig. S2) were normalized using the Statfingerprints library (Michelland et al. 2009) in R software version 2.9.2 (R Development Core Team 2010), with a standard procedure as described elsewhere (Fromin et al. 2002).

2. CE-SSCP profile description

Capillary electrophoresis single-strand conformation polymorphism (CE-SSCP), a fingerprinting pattern analysis based on 16S rDNA sequences is a widely used technique considered as an “image” of the whole microbial diversity given by discrete peaks that emerge from the subpeak background (Loisel et al. 2006). Fig. S2 presents a representative 16S rRNA gene-based CE-SSCP fingerprint profile of multiple analyzed samples of the sediment used as inoculum before the MEC start-up (Fig. S2A) and CE-SSCP profiles from the enriched anodic electroactive biofilm collected at the end of Phase III (Fig. S2: B1-3). While, the CE-SSCP profile obtained from the sediment depicted a complex community (Fig. S2A), biofilm CE-SSCP profiles showed a slightly more defined structure regardless their location on the electrode material (Fig. S2: B1, B2 and B3). In particular, the well-defined prominent peak found at about 350 (arb. units) on the “x” axis clearly points out that a high microbial selection occurred likely due to the constant experimental conditions used during biofilm development (Phase I) and MEC continuous operation (Phase II and III): e.g., anode potentiostically controlled, pH, temperature and single substrate feeding. A finding well in agreement with other studies in which this type of high microbial selection in anodic biofilms has been mainly (and almost exclusively) observed in systems inoculated with domestic wastewater and fed with a single non-fermentable substrate such as acetate (Harnisch et al. 2011).

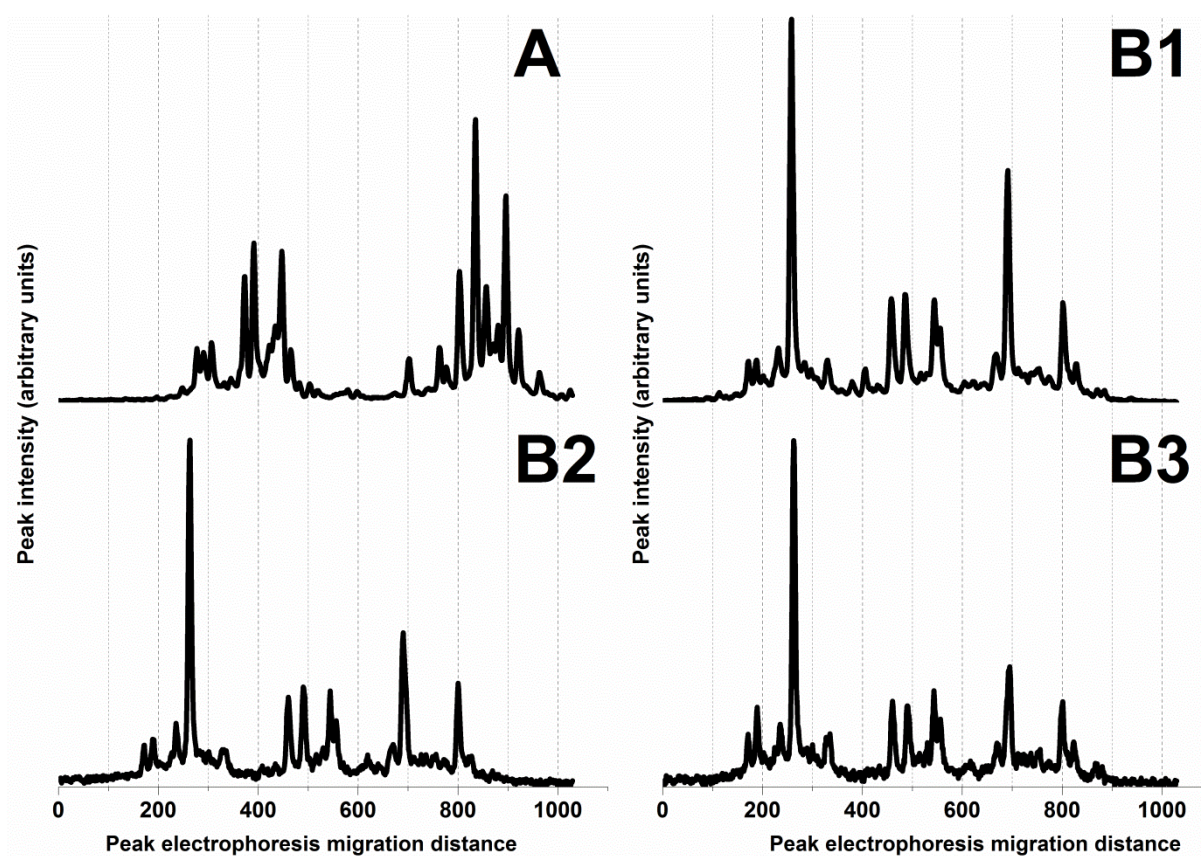


Fig. S2 - CE-SSCP profiles based on 16S rRNA gene fragments retrieved from (A) the sediments used as inoculum and (B1-3) the electroactive biofilm enriched during more than 100 days of MEC continuous operation.

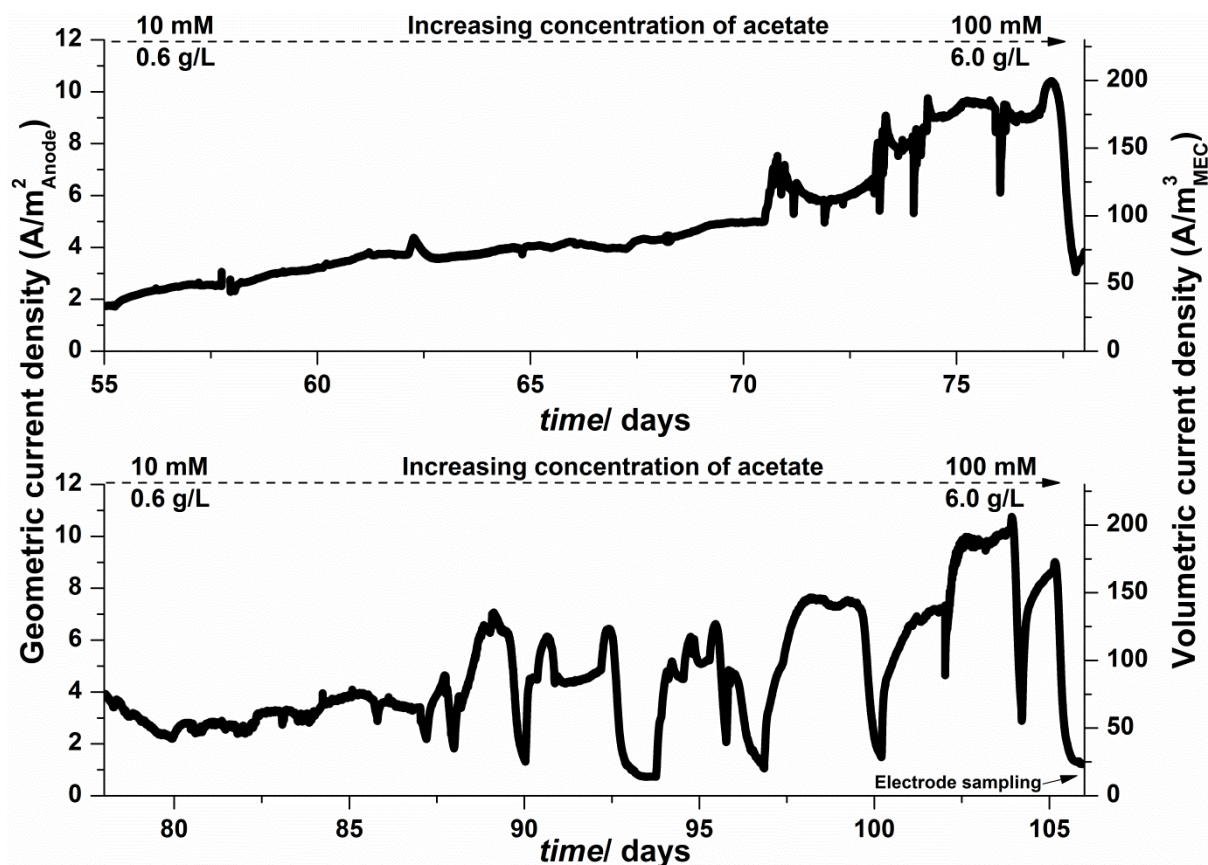
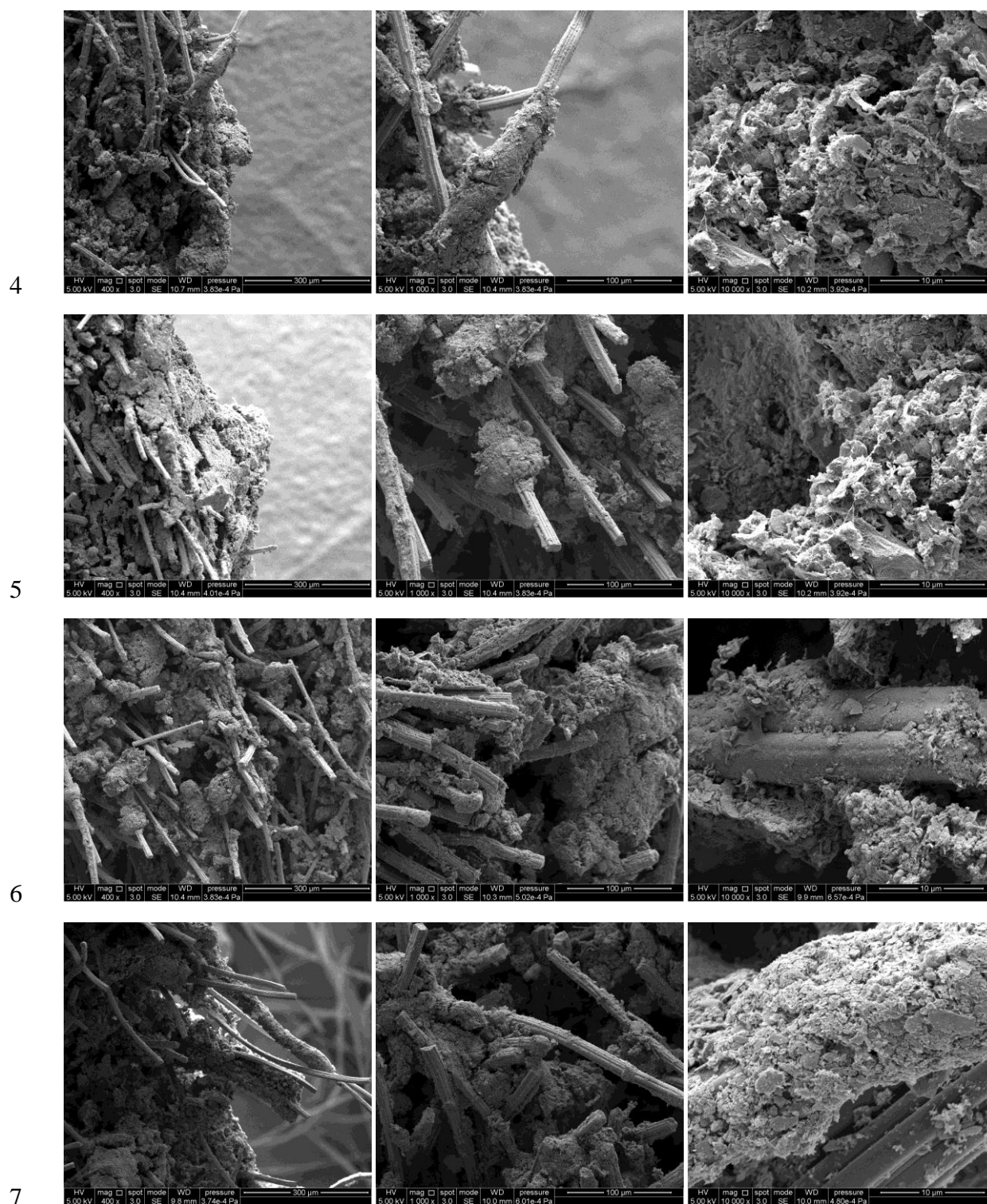


Fig. S3 - Phase 3: increasing acetate concentration test during chronoamperometric (at 200 mV vs. SCE) continuous operation of the liter scale up-flow MEC used throughout the present study. With the same electroactive biofilm within the MEC two replicates were conducted. As it can be seen, for the 2nd replicate sudden drops in current density production were observed. This was due to the salt contained in the medium that blocked the tubing used to feed the MEC as per our observations.

1 **Table S1** - Selected δ -proteobacterial sequences from the 16S rRNA-based phylogenetic tree
 2 (The All-species Living Tree: <http://www.arb-silva.de/projects/living-tree/>).

Accession number	Family	Organism name	Sequence length/ bp
AF418174	Desulfarculaceae	<i>Desulfarculus baarsii</i>	1522
AY464939	Desulfomicrobiaceae	<i>Desulfomicrobium thermophilum</i>	1518
AF418176	Desulfobacteraceae	<i>Desulfotignum balticum</i>	1505
U48243	Desulfovibrionaceae	<i>Desulfovibrio halophilus</i>	1547
DQ365924	Desulfovibrionaceae	<i>Desulfovibrio marinus</i>	1524
AAEW02000008	Desulfuromonadaceae	<i>Desulfuromonas acetoxidans</i>	1558
AY835392	Desulfuromonadaceae	<i>Desulfuromusa ferrireducens</i>	1491
DQ309326	Geobacteraceae	<i>Geoalkalibacter ferrihydriticus</i>	1504
EU182247	Geobacteraceae	<i>Geoalkalibacter subterraneus</i>	1555
U13928	Geobacteraceae	<i>Geobacter sulfurreducens</i>	1408
AY187303	Geobacteraceae	<i>Geopsychrobacter electrodiphilus</i>	1493
CP000758	Brucellaceae	<i>Ochrobactrum anthropi</i>	1476
AB498815	Bradyrhizobiaceae	<i>Rhodopseudomonas palustris</i>	1484
AY631277	Peptococcaceae	<i>Thermincola ferriacetica</i>	1443
AF005251	Shewanellaceae	<i>Shewanella oneidensis</i>	1389

3



8

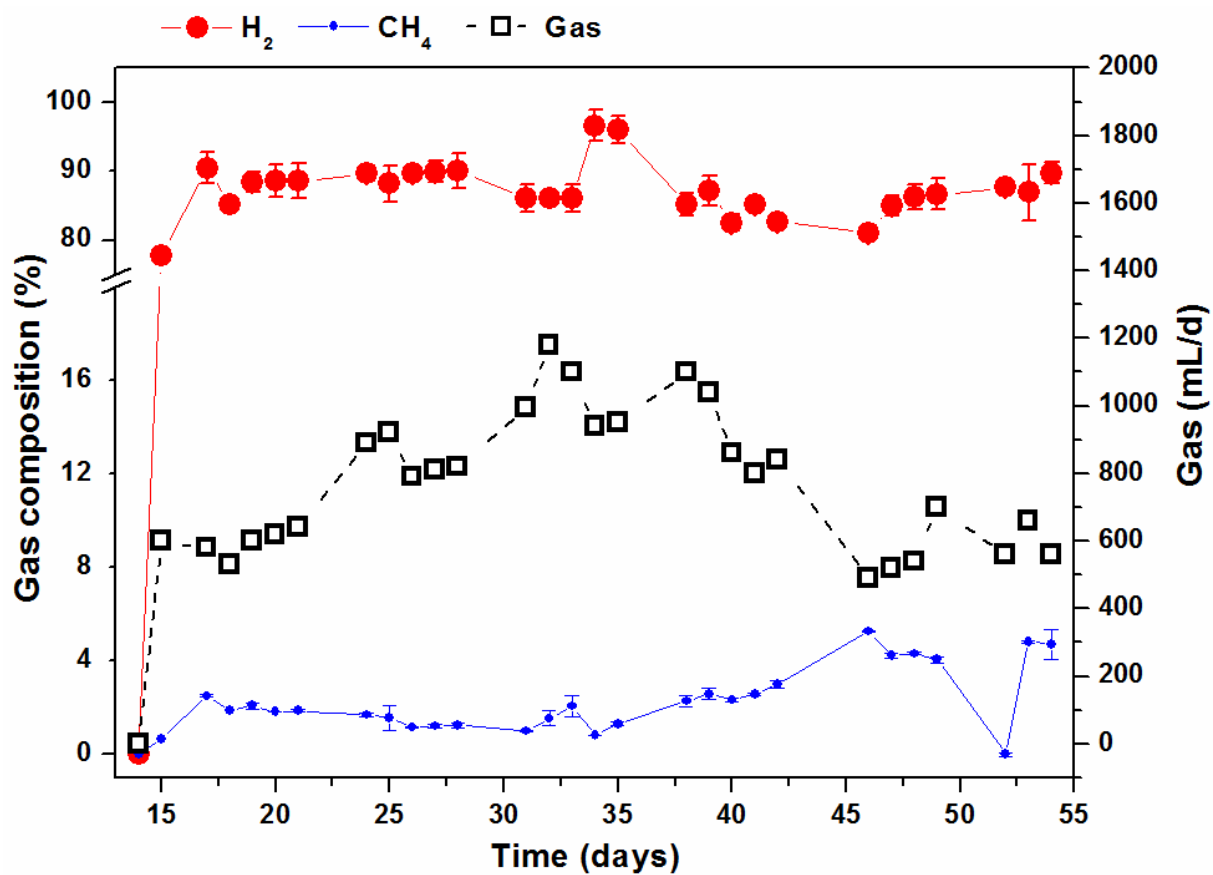
9 **Fig. S4** - Additional exemplary scanning electron microscopy pictures of the anodic

10 electroactive biofilm observed after more than 100 days of MEC continuous operation. Scale

11 bars (in μm) are indicated in the bottom of the picture for left (300), middle (100) and right

12 (10) columns.

13



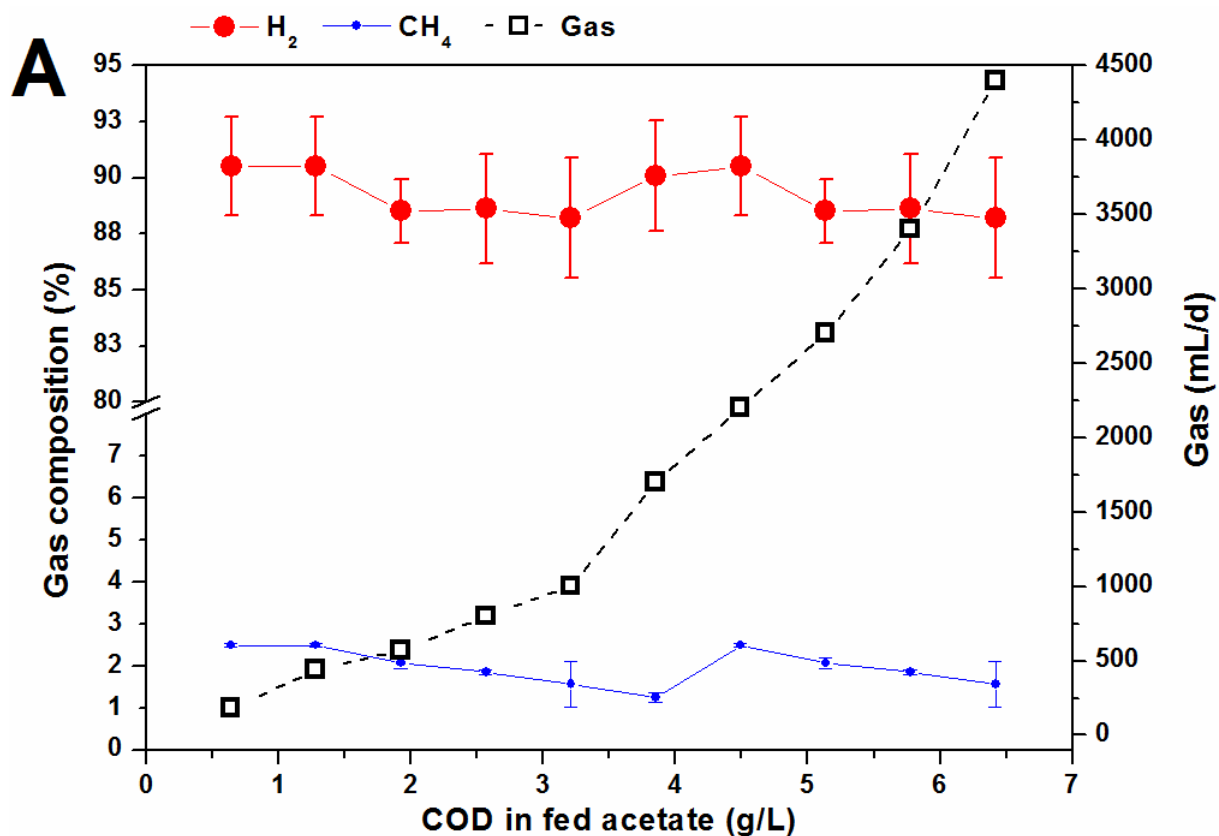
14

15 **Fig. S5** - Detailed gas volume and composition sampled at the cathode chamber during Phase

16 I.

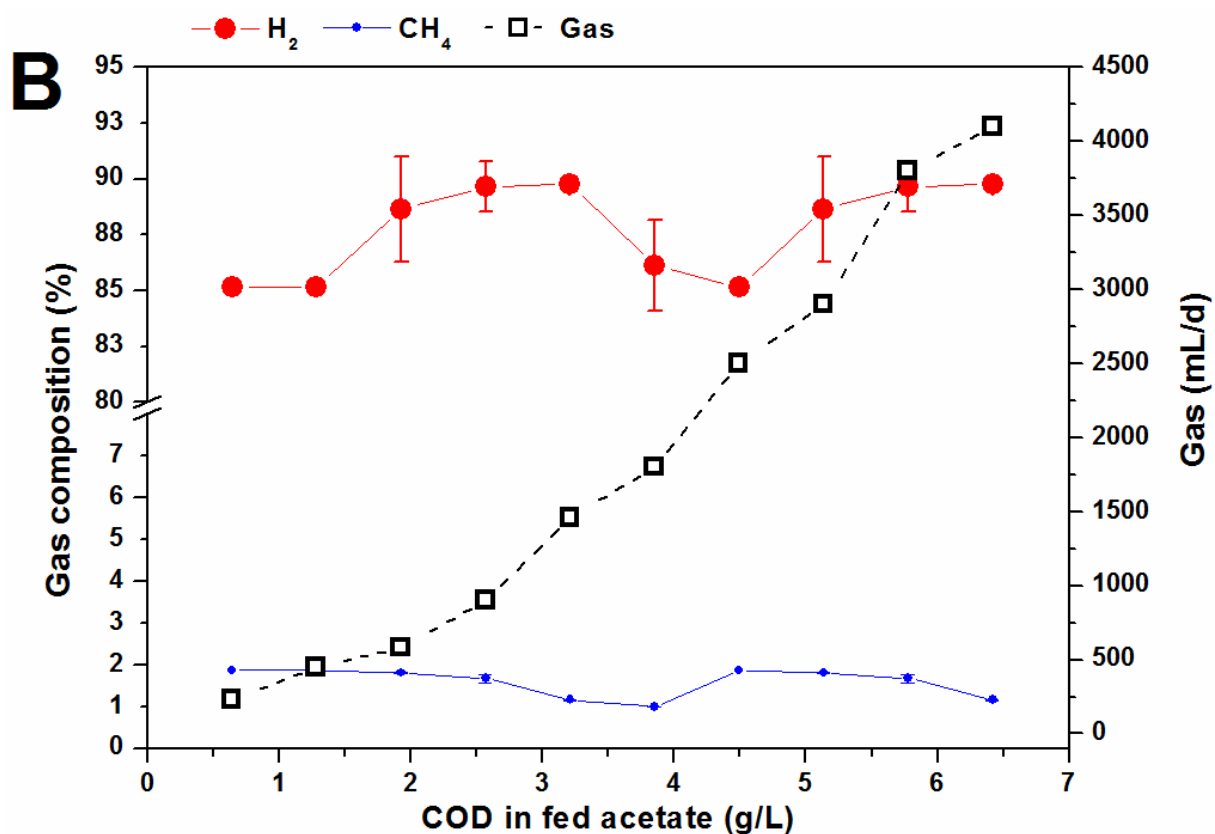
17

18



19

20



21 **Fig. S6** - Gas volume collected and composition sampled at the cathode chamber during
 22 Phase III. The average and standard deviation of two daily measurements is shown.

23 **Table S2** - Substrate concentration fed to the MEC at each experimental Phase.

Acetate (mmol/L)	Acetate (g/L)	COD in fed acetate (g/L)	Phase I	Phase II	Phase III
10	0.6	0.64	x		x
15	0.9	0.96	x		
20	1.2	1.28	x	x	x
30	1.8	1.93			x
40	2.4	2.57			x
50	3.0	3.21			x
60	3.6	3.85			x
70	4.2	4.49			x
80	4.8	5.14			x
90	5.4	5.78			x
100	6.0	6.42			x

24

25 **3. Benefit of producing H₂ by poisoning the anode potential in comparison to other**
 26 **strategies: i) use of a fixed cell voltage or ii) use of a poisoned cathode potential**

27 With respect to the different operational conditions used in MEC studies, in the literature
 28 three types can be found from the electrochemical perspective independently if the anode
 29 and/or the cathode are mainly biologically or chemically catalyzed.

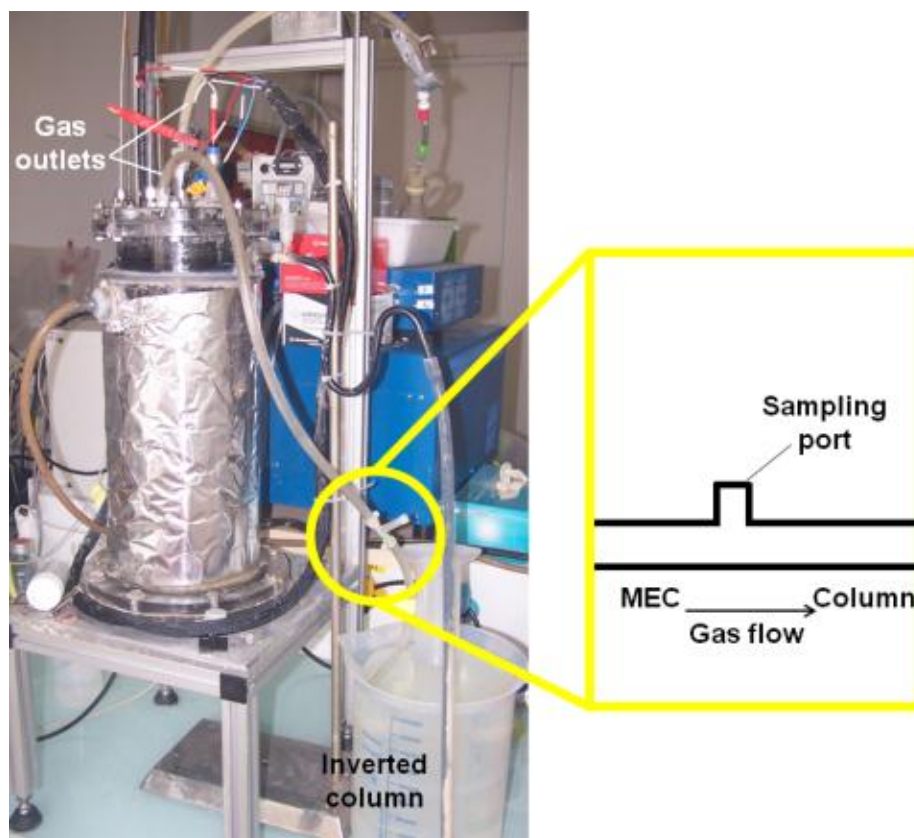
30 Type 1 or 2: the anode or the cathode potential is constantly controlled by a potentiostat. Such
 31 potentiostatic method provides the certainty that at least one of the electrodes is constantly
 32 fixed at a decided potential. Thus, the observed reactions occur thanks to that specific applied
 33 potential.

34 On the other side, in type 3 the whole MEC potential is constantly controlled by a power
 35 source without clearly being able to fix the potential at which available substrates in the
 36 medium might be oxidized or reduced at the electrodes (Batlle-Vilanova et al. 2014, Nam et
 37 al. 2011).

38 **4. Abiotic cathode versus biotic cathode**

39 Although the use of bio-cathodes (instead of abiotic-cathodes) in MECs shows considerable
 40 potential (Batlle-Vilanova et al. 2014), the present study was part of a project aiming at
 41 coupling two biotechnological processes: dark fermentation and microbial electrolysis. Thus,
 42 we decided to use a configuration in which we could microbiologically oxidize certain

43 substrate at the anode and chemically use those electrons at the cathode to produce H₂. Such
44 configuration allowed us to well control the experimental conditions at the anode.



45
46 **Fig. S7** - Gas produced in the system either at the cathode or anode chamber was collected in
47 an inverted column. In between the MEC and the inverted column a sampling port was
48 installed to analyze gas composition by chromatography.

49 5. Use of cyclic voltammetry

50 Cyclic voltammetry (CV) was mainly used to i) know the possible electron transfer
51 mechanism (ETM) employed by the anodic biofilm and ii) demonstrate the formation of a
52 mature biofilm (data not shown in the first version of the manuscript). We have used a
53 previously applied approach to recognize the formation of a mature biofilm by comparing the
54 shape of the bare electrode CV and the one after three cycles of chronoamperometry (Fig. S8).
55 Additionally, we have plotted the 1st derivative of a CV of a mature biofilm to calculate the
56 formal potential (E_f) which indicates the potential at which the biofilm likely transfer
57 electrons to the electrode material (Carmona-Martínez et al. 2011, Carmona-Martínez et al.
58 2012, Carmona-Martínez et al. 2013).
59

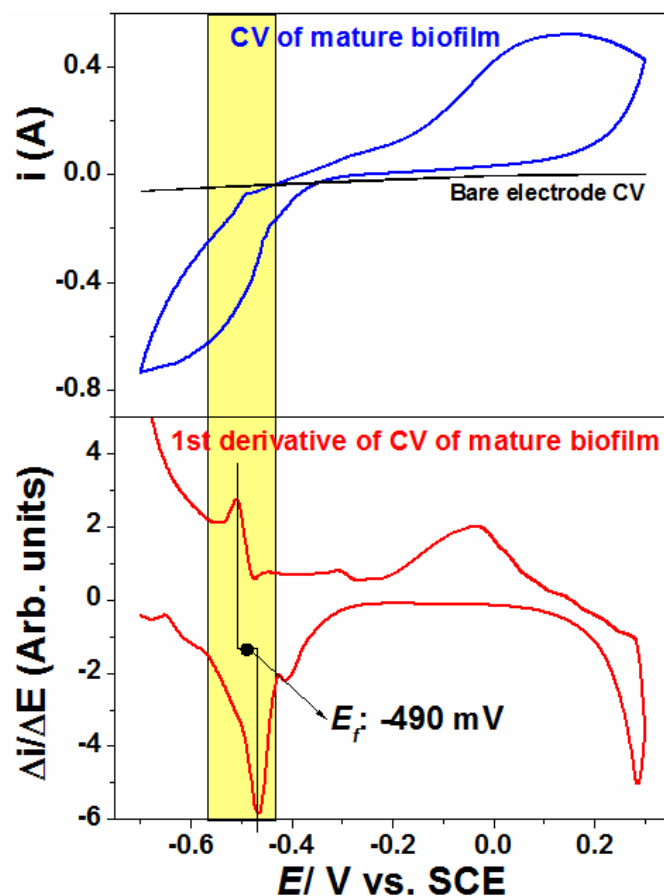


Fig. S8 - Cyclic voltammetry applied to the analysis of the anodic biofilm.

Table S3 - Recently published reports on scalable MECs treating real domestic wastewater.

E_{app} (V)	HRT (h)	MEC volume (L)	T (°C)	H ₂ (%)	CE (%)	COD removal (%)	j (A/m ²)	H ₂ (m ³ /m ³ ·d)	Reference
1.1	24	120	16-22	100	55	33.7 ± 54.0	0.3	0.015	(Heidrich et al. 2013)
1.0	96	2	20	N.R.	24	80	0.22	0.022	(Gil-Carrera et al. 2013)
1.1	24	100	1-22	100	41	Below standards	21.3	0.006	(Heidrich et al. 2014)
0.7	42	3	19	80	238	92	0.36	0.015	(Escapa et al. 2015)
0.2	12	4	37	90	10	70	10.6	0.900	This study

66

67 **References:**

- 68
- 69 Batlle-Vilanova, P., Puig, S., Gonzalez-Olmos, R., Vilajeliu-Pons, A., Bañeras, L., Balaguer, M.D. and
- 70 Colprim, J. (2014) Assessment of biotic and abiotic graphite cathodes for hydrogen production in
- 71 microbial electrolysis cells. *International Journal of Hydrogen Energy* 39(3), 1297-1305.
- 72 Carmona-Martínez, A.A., Harnisch, F., Fitzgerald, L.A., Biffinger, J.C., Ringeisen, B.R. and Schröder, U.
- 73 (2011) Cyclic voltammetric analysis of the electron transfer of *Shewanella oneidensis* MR-1 and
- 74 nanofilament and cytochrome knock-out mutants. *Bioelectrochemistry* 81(2), 74-80.
- 75 Carmona-Martínez, A.A., Harnisch, F., Kuhlicke, U., Neu, T.R. and Schröder, U. (2012) Electron
- 76 transfer and biofilm formation of *Shewanella putrefaciens* as function of anode potential.
- 77 *Bioelectrochemistry* (0).
- 78 Carmona-Martínez, A.A., Pierra, M., Trably, E. and Bernet, N. (2013) High current density via direct
- 79 electron transfer by the halophilic anode respiring bacterium *Geoalkalibacter subterraneus*.
- 80 *Physical Chemistry Chemical Physics* 15(45), 19699-19707.
- 81 Escapa, A., San-Martín, M.I., Mateos, R. and Morán, A. (2015) Scaling-up of membraneless microbial
- 82 electrolysis cells (MECs) for domestic wastewater treatment: Bottlenecks and limitations.
- 83 *Bioresource Technology* 180(0), 72-78.
- 84 Fromin, N., Hamelin, J., Tarnawski, S., Roesti, D., Jourdain-Miserez, K., Forestier, N., Teyssier-Cuvelle,
- 85 S., Gillet, F., Aragno, M. and Rossi, P. (2002) Statistical analysis of denaturing gel electrophoresis
- 86 (DGE) fingerprinting patterns. *Environmental Microbiology* 4(11), 634-643.
- 87 Gil-Carrera, L., Escapa, A., Carracedo, B., Morán, A. and Gómez, X. (2013) Performance of a semi-pilot
- 88 tubular microbial electrolysis cell (MEC) under several hydraulic retention times and applied
- 89 voltages. *Bioresource Technology* 146(0), 63-69.
- 90 Harnisch, F., Koch, C., Patil, S.A., Hübschmann, T., Müller, S. and Schröder, U. (2011) Revealing the
- 91 electrochemically driven selection in natural community derived microbial biofilms using flow-
- 92 cytometry. *Energy and Environmental Science* 4(4), 1265-1267.
- 93 Heidrich, E.S., Dolfing, J., Scott, K., Edwards, S.R., Jones, C. and Curtis, T.P. (2013) Production of
- 94 hydrogen from domestic wastewater in a pilot-scale microbial electrolysis cell. *Applied*
- 95 *Microbiology and Biotechnology* 97(15), 6979-6989.
- 96 Heidrich, E.S., Edwards, S.R., Dolfing, J., Cotterill, S.E. and Curtis, T.P. (2014) Performance of a pilot
- 97 scale microbial electrolysis cell fed on domestic wastewater at ambient temperatures for a 12
- 98 month period. *Bioresource Technology* 173(0), 87-95.
- 99 Loisel, P., Harmand, J., Zemb, O., Latrille, E., Lobry, C., Delgenès, J.-P. and Godon, J.-J. (2006)
- 100 Denaturing gradient electrophoresis (DGE) and single-strand conformation polymorphism (SSCP)
- 101 molecular fingerprintings revisited by simulation and used as a tool to measure microbial
- 102 diversity. *Environmental Microbiology* 8(4), 720-731.
- 103 Michelland, R.J., Dejean, S., Combes, S., Fortun-Lamothe, L. and Cauquil, L. (2009) StatFingerprints: a
- 104 friendly graphical interface program for processing and analysis of microbial fingerprint profiles.
- 105 *Molecular Ecology Resources* 9(5), 1359-1363.
- 106 Nam, J.-Y., Tokash, J.C. and Logan, B.E. (2011) Comparison of microbial electrolysis cells operated
- 107 with added voltage or by setting the anode potential. *International Journal of Hydrogen Energy*
- 108 36(17), 10550-10556.
- 109 Rousseau, R., Lacroix, R., Etcheverry, L., Da Silva, S., Bergel, A. and Delia, M.-L. (2013) Production de
- 110 bioH₂ par électrolyse microbienne : conception d'un prototype, Société Française de Génie des
- 111 Procédés, Paris, France.
- 112
- 113
- 114