



HAL
open science

Transport of dipolar excitons in (Al,Ga)N/GaN quantum wells.

Fedor Fedichkin, Peristera Andreakou, Benoit Jouault, Maria Vladimirova, Thierry Guillet, Christelle Brimont, Pierre Valvin, Thierry Bretagnon, Amélie Dussaigne, Nicolas Grandjean, et al.

► **To cite this version:**

Fedor Fedichkin, Peristera Andreakou, Benoit Jouault, Maria Vladimirova, Thierry Guillet, et al.. Transport of dipolar excitons in (Al,Ga)N/GaN quantum wells.. *Physical Review B: Condensed Matter and Materials Physics (1998-2015)*, 2015, 91 (20), pp.205424. 10.1103/PhysRevB.91.205424 . hal-01154792

HAL Id: hal-01154792

<https://hal.science/hal-01154792>

Submitted on 9 Feb 2019

HAL is a multi-disciplinary open access archive for the deposit and dissemination of scientific research documents, whether they are published or not. The documents may come from teaching and research institutions in France or abroad, or from public or private research centers.

L'archive ouverte pluridisciplinaire **HAL**, est destinée au dépôt et à la diffusion de documents scientifiques de niveau recherche, publiés ou non, émanant des établissements d'enseignement et de recherche français ou étrangers, des laboratoires publics ou privés.

Transport of dipolar excitons in (Al,Ga)N/GaN quantum wells

F. Fedichkin,¹ P. Andreakou,¹ B. Jouault,¹ M. Vladimirova,¹ T. Guillet,¹ C. Brimont,¹
P. Valvin,¹ T. Bretagnon,¹ A. Dussaigne,² N. Grandjean,^{3,2} and P. Lefebvre¹

¹Laboratoire Charles Coulomb, UMR 5221 CNRS-Université de Montpellier, 34095 Montpellier, France

²CRHEA-CNRS, Rue Bernard Gregory, 06560 Valbonne, France

³Institute of Condensed Matter Physics, EPFL, CH-1015 Lausanne, Switzerland

We investigate the transport of dipolar indirect excitons along the growth plane of polar (Al,Ga)N/GaN quantum well structures by means of spatially- and time-resolved photoluminescence spectroscopy. The transport in these strongly disordered quantum wells is activated by dipole-dipole repulsion. The latter induces an emission blue shift that increases linearly with exciton density, whereas the radiative recombination rate increases exponentially. Under continuous, localized excitation, we measure a continuous red shift of the emission, as excitons propagate away from the excitation spot. This shift corresponds to a steady-state gradient of exciton density, measured over several tens of micrometers. Time-resolved micro-photoluminescence experiments provide information on the dynamics of recombination and transport of dipolar excitons. We account for the ensemble of experimental results by solving the nonlinear drift-diffusion equation. Quantitative analysis suggests that in such structures, exciton propagation on the scale of 10 to 20 microns is mainly driven by diffusion, rather than by drift, due to the strong disorder and the presence of nonradiative defects. Secondary exciton creation, most probably by the intense higher-energy luminescence, guided along the sample plane, is shown to contribute to the exciton emission pattern on the scale up to 100 microns. The exciton propagation length is strongly temperature dependent, the emission being quenched beyond a critical distance governed by nonradiative recombination.

I. INTRODUCTION

In the last years, indirect excitons (IXs) have attracted considerable attention because they constitute a model-system for studies of cold gases of dipolar bosons in a solid-state environment¹. An IX is composed of an electron and a hole, bound by Coulomb attraction but engineered in such a way that a potential barrier separates them along one direction in space. One of the most interesting and most studied realizations of IXs has been obtained in (Al,Ga)As/GaAs coupled quantum wells (CQWs) under externally applied electric field². In such structures the electric field applied along the structure axis tilts the conduction and valence band edges, so that the optical recombination takes place between an electron and a hole confined in different quantum wells (QWs), which form an IX. For typical electric fields of several volts per micrometer, red shift (quantum confined Stark effect) reaches tens of meV.^{2,3} The separation between electron and hole within an IX increases drastically its radiative lifetime. Radiative lifetimes as large as tens of microseconds have been reported in the literature.^{2,3} It has been shown, that if the thermalization time of IXs is shorter than their lifetime, the IXs can cool down to temperatures comparable or smaller than the degeneracy temperature, thus allowing for condensation into a coherent state.⁴⁻⁸

Another important feature of IXs, is their intrinsic dipole moment, aligned perpendicular to the QW plane. These dipoles constitute an ideal driving force for putting IXs in motion, since an IX cloud rapidly expands along the QW plane under its own repulsive forces.^{3,9,10} Dipole-dipole interaction also leads to the screening of the electric field and induces a density-dependent blue shift of the

exciton energy¹¹, at least below the Mott density above which excitonic effects are washed out.¹² Blue shifts of IX energy up to several meVs and propagation lengths reaching a hundred of microns have been observed in GaAs/(Al,Ga)As CQWs at low temperatures.^{3,13}

In-plane motion of IXs can also be controlled by external voltages. This can be used to collect and manipulate IXs in traps,¹⁴⁻¹⁶ lattices¹⁷ and narrow channels¹⁸ which are similar to the traps and lattices used in the studies of cold atoms.^{19,20} This degree of control opens new possibilities for studying fundamental physical properties of IXs.²¹ The efficient control of IXs by external voltages also paves the way to novel optoelectronic devices based on excitonic properties, as recently demonstrated.²²⁻²⁶ However, the development of such devices operating at room temperature seems difficult, at least with GaAs/(Al,Ga)As heterostructures. This is mainly due to the relatively small exciton binding energy. Indeed, exciton binding energy is equal to 4 meV in bulk GaAs, which corresponds to a temperature of 45 K.²⁷ It is enhanced by quantum confinement in QWs but it is still reduced down to a few meV in CQWs, because of the on-axis separation of the electron-hole pair.

Wide band-gap semiconductors are, from this standpoint, much better candidates: binding energies as high as 25 meV, for bulk GaN, or 60 meV for bulk ZnO²⁸ permit the preservation of excitonic properties up to room temperature. These compounds, in their natural wurtzite crystal form, exhibit another interesting feature: spontaneous and piezoelectric polarizations^{29,30}. So far, this was considered detrimental for optoelectronic applications but it can constitute a decisive advantage for creating of cold gases of dipolar excitons. Indeed, GaN/(Al,Ga)N or ZnO/(Zn,Mg)O single QWs grown

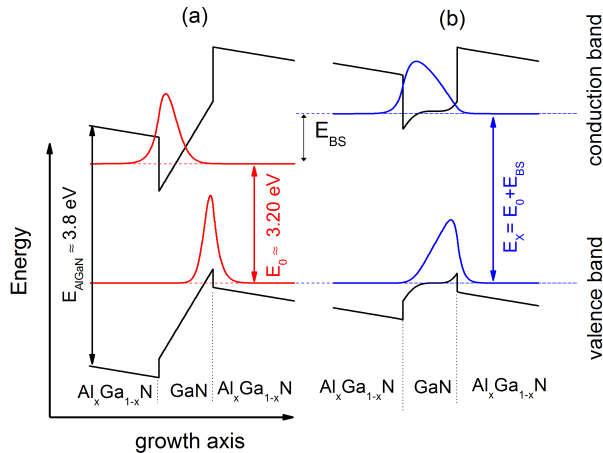


FIG. 1. Calculated electronic band structures showing energy and wave functions of electrons and holes in a polar single quantum well (sample C) at (a) low and (b) high exciton density respectively and at $T=4$ K. E_{AlGaN} is the energy gap in the barrier, E_0 (E_X) is the exciton recombination energy in the zero (high) density limit, E_{BS} is the population-induced blue shift $E_{BS} = E_X - E_0$.

along the (0001) crystal axis, naturally exhibit built-in electric fields of hundreds of kV/cm. This results from the difference of total polarizations between the well and barrier materials.^{31,32} For instance, in GaN/(Al,Ga)N QWs wider than 3 nm, the quantum-confined Stark effect is so strong that it dominates over the quantum confinement. In this case, the ground-state exciton energy lies below the band gap of GaN (3.48 eV at 4 K).³³

In such QWs, IXs are naturally created in the absence of an external electric field. Their binding energy decreases significantly when the well thickness increases but still remains largely above 10 meV.^{31,34} Consistently, radiative lifetimes increase exponentially and values as large as tens of microseconds have been measured for QWs widths of 6 – 8 nm only.^{31,35,36} One important consequence of the large band offsets, lifetimes and electric field effects in polar GaN/(Al,Ga)N QWs is the possibility to accumulate dipolar exciton densities larger than 10^{12} cm⁻² using reasonably small laser power densities, inducing blue shifts of several hundreds of meV. This situation has been both observed experimentally and thoroughly modeled,³⁵ as shown in Fig. 1. By solving self-consistently the Poisson and Schrödinger equations, the curvatures of both potential and envelope wave-functions can be calculated, to obtain the optical transition energies.

The purpose of this paper is to exploit dipole-dipole repulsion to study the transport of IXs in GaN/(Al,Ga)N QWs grown along the (0001) axis. The tightly localized, strong nonresonant excitation in such structures produces a potential that pushes the dipolar excitons away from the excitation spot. Time and spatially-resolved

photoluminescence (PL) measurements allow us to observe the emission/propagation of those excitons over tens of micrometers along the sample plane, at low temperature ($T = 4$ K). When the temperature is increased, the dipolar exciton propagation exhibits a drastic shrinking of extension, in the form of a horizon which corresponds to the distance at which the radiative recombination rate becomes smaller than the nonradiative one. Fittings of the experimental results in the framework of the drift-diffusion model suggests the domination of diffusion over the drift induced by dipole-dipole repulsion.

II. SAMPLES

Sample name	A	B	C
QW width (nm)	6.0	6.0	7.8
Al (%)	20	20	15
Inner barrier	Al _{0.2} Ga _{0.8} N	AlN	-
F (kV/cm)	900	900	670
τ_{rad}^0 (μ s)	22.5	24.0	1.6
ϕ_0 (eV \times cm ⁻²)	6.5×10^{-14}	7.49×10^{-14}	5.39×10^{-14}
γ (cm ⁻²)	9.08×10^{11}	11.6×10^{11}	5.68×10^{11}
E_0 (eV)	3.08	3.13	3.20

TABLE I. Sample parameters: GaN QW width, Al content in GaAlN barriers, inner barrier composition, built-in electric field F . The values of τ_{rad}^0 , γ (E_0 , ϕ_0) are used to calculate density-dependent radiative lifetimes τ_{rad} (exciton energies E_X), according to Eq. 2 (Eq. 1).

The three samples under study were grown by molecular beam epitaxy (MBE) on c-plane oriented sapphire substrates followed by a 2 μ m thick GaN buffer layer. Their main characteristics are summarized in Table I. For sample A, the active zone consists of a 30 nm thick Al_{0.20}Ga_{0.80}N barrier, a 4.4 nm (17 atomic monolayers) GaN QW followed by one monolayer of Al_{0.20}Ga_{0.80}N, a 1.6 nm (6 atomic monolayers) GaN QW and a 30 nm thick Al_{0.20}Ga_{0.80}N cap layer. This sample can alternatively be described as a 6 nm-wide GaN/Al_{0.20}Ga_{0.80}N QW, in which an ultrathin barrier of Al_{0.20}Ga_{0.80}N has been placed at the location where the envelope functions of the electron and the hole overlap most weakly. In such structures, the overlap is further decreased and the radiative lifetime is enhanced, but with a limited impact on the exciton binding energy. Sample B was fabricated following the same concept of a 6 nm-wide QW containing a 1-monolayer barrier, but the latter was made of AlN, instead of Al_{0.20}Ga_{0.80}N. For sample C, the active zone consists of a 30 nm thick Al_{0.15}Ga_{0.85}N barrier, a 7.8 nm (30 atomic ML) GaN QW and 30 nm thick Al_{0.15}Ga_{0.85}N cap layer. Sample C was also studied in Ref. 35. Its low-temperature exciton lifetime was deter-

mined as $\tau_{rad}^0 = 1.65 \mu s$. For samples A and B, using similar experimental conditions as in Ref. 35 and a laser repetition rate of 4 kHz, we measured characteristic decay times of 22.5 and 24 μs respectively. As for Sample C (Ref. 35), the PL spectra of Samples A and B peak at much lower energies than the bulk GaN exciton. They also exhibit intense optical-phonon replica, which is another consequence of the strong on-axis dipole.^{31,37,38}

II.1. Excitonic energy and radiative lifetime versus excitonic density

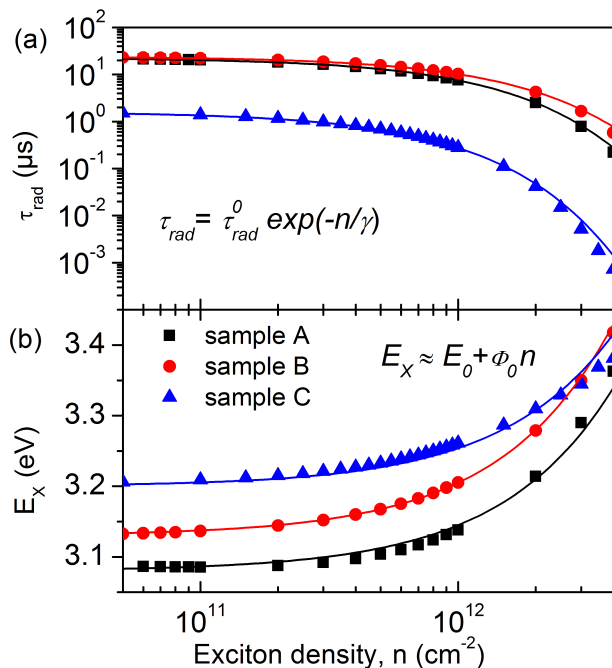


FIG. 2. Calculated dependence of radiative lifetime (a) and transition energy (b) versus exciton density, for samples A, B and C found by solving Schrödinger-Poisson equations (triangles, circles and squares, respectively). Continuous lines show the approximations by exponential (lifetimes: a) and linear laws (energies: b).

To describe the transport of indirect excitons quantitatively, we need to establish a correspondence between the density of dipolar excitons and the blue shift of the optical transition. For this purpose, we solve numerically the coupled Schrödinger-Poisson equations by the self-consistent procedure described in Ref. 35. Above a Mott density of $n \approx 10^{12} \text{ cm}^{-2}$, many body effects and band gap renormalization are known to influence the density induced blue shift, as explained in Ref. 35, introducing a simplified, phenomenological model for the additional terms to the field screening effects. Recently, a more thorough discussion and modeling of those many-body interactions has been published.³⁹ In the measurements

reported below, we will be only weakly concerned by densities exceeding 10^{12} cm^{-2} . Thus, we use the phenomenological approach of Ref. 35 to establish the density dependence of the blue shift. A typical result is shown in Figure 1, for low (a) and high (b) exciton densities. The blue shift E_{BS} from the zero-density exciton transition E_0 can be observed at high density, as well as the increasing overlap of the electron and hole wave functions. Note also the strongly curved potential profile. The local electric field is not constant along the growth axis, making our calculation far more accurate than others which assume a constant electric field, rigidly altered by static charges distributed as Dirac functions at each interfaces. The values of the built-in electric field F at zero exciton density are given in Table I for each sample.

Using this approach, we calculate the blue shift E_{BS} of the optical transition as a function of the exciton density n for each sample (Fig. 2(b)). The dependence between the two quantities is nearly linear and the exciton energy can be approximated by:

$$E_X = E_0 + E_{BS} \simeq E_0 + \phi_0 n, \quad (1)$$

where the self-induced potential ϕ_0 is the fitting parameter. Thus, from the experimentally determined PL blue shift we can deduce the IX density.

The radiative lifetime τ_{rad} is inversely proportional to the squared overlap integral of the electron and hole envelope functions, and can be calculated as a function of the exciton density (Fig. 2(a)). The resulting density-dependent lifetime for all the samples is well described by an exponential

$$\tau_{rad} \simeq \tau_{rad}^0 \exp(-n/\gamma), \quad (2)$$

where γ is the fitting parameter. τ_{rad}^0 is measured by macro-PL measurements of the ultimate decay time constants, measured at low temperature and at long delays. The resulting parameters are reported in Table I for the three samples.

III. EXPERIMENTAL SETUP

For micro-PL experiments, the samples were placed in a cryostat and excited by a 266 nm continuous-wave laser (Crylas/FQCW 266–50) through a microscope objective. This objective collects the PL signal in such a way that the image of the sample surface is reproduced at the entrance of the spectrometer, where it is filtered by a vertical entrance slit. The spectrometer is equipped with a grating with 150 gr/mm blazed at 390 nm. The detector is a cooled CCD camera with 1024×256 pixels. The pixel size is 26 μm , which corresponds to 760 nm on the sample surface. This value matches the smallest laser spot diameter that our objective can provide (800 nm), thus allowing for an overall spatial resolution of 0.8 μm . This setup provides a direct spatial imaging of the luminescence with a spectral resolution. Two-dimensional

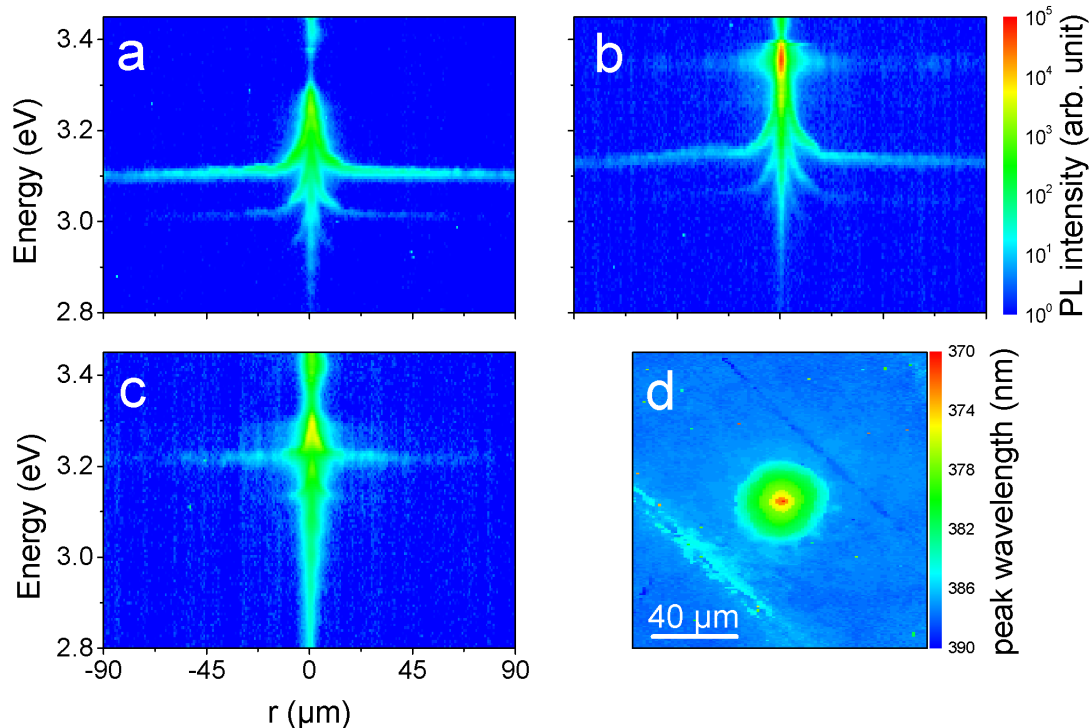


FIG. 3. Color map of the PL intensity taken at $T = 4$ K on (a) sample A, (b) sample B, and (c) Sample C. The abscissa r corresponds to the distance from the excitation spot. The ordinate corresponds to the energy spectrum. The color map (d) shows the PL peak wavelength as a function of the position in the (x, y) plane of Sample B. The excitation spot is located at the center of the map.

images, with spectral resolution, were obtained by scanning horizontally the lens which ensures the focusing onto the same entrance slit. The excitation power density was estimated as $P_0 = 2.3$ MW/cm².

PL experiments combining time and spatial resolution are based on the same setup, except that the detector is a Hamamatsu streak-camera (model C10910 equipped with an S20 photocathode and UV coupling optics), enhanced for ultraviolet detection. This camera can reach an ultimate time-resolution of 1 ps but, for the time-windows explored in this study, this resolution was rather of 15 ps. Pulsed laser excitation at 260 nm, through the same microscope objective, is provided by the frequency-tripled tunable radiation from a Titanium-Sapphire cavity, with typical pulse duration of 150 fs and tunable repetition rate. For the present ultra-slow decays, we set this rate to 4 kHz with an average power density 0.1 MW/cm².

IV. EXPERIMENTAL RESULTS

IV.1. Low-temperature PL

Figure 3(a-c) shows typical images of spatially and spectrally resolved PL obtained at $T = 4$ K for Samples A, B and C. The PL intensity is measured at different distances r from the excitation spot (horizontal axis) and at different photon energies (vertical axis), in the presence of the strongly focused excitation at $r = 0$ at power density P_0 . The dominant PL line, at higher energy, corresponds to the zero-phonon excitonic recombination. Optical phonon (LO) replicas of this PL line appear at lower energies, separated by multiples of 91 meV. As far as the spatial dependence is concerned, these replica follow the energy variation of the main zero-phonon line. In the following we will focus on the zero-phonon emission line. Close to the excitation spot, the PL energy is blue shifted up to values close to the GaN excitonic gap $E_{GaN} = 3.48$ eV. The maximal blue shift, observed at $r \sim 0$, is larger than 0.2 eV for Samples A and B, see Figure 3(a-b), and close to 0.15 eV for Sample C, see Figure 3(c). However, the determination of the exact blue shift at $r < 3$ μm is less accurate than for the rest of the sample surface, because the observed PL spec-

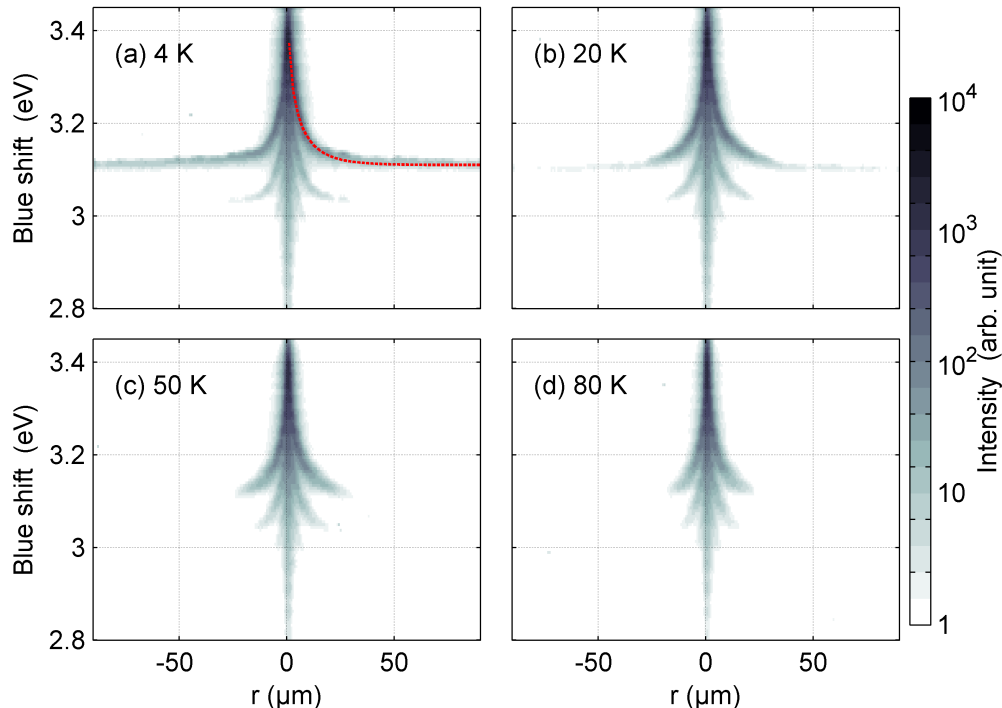


FIG. 4. Grayscale map of the PL intensity taken on sample A for different temperatures: (a) 4 K, (b) 20 K, (c) 50 K and (d) 80 K. The solution of the diffusion equation with constant diffusion coefficient D and recombination rate R such that $\sqrt{D/R} = 12 \mu\text{m}$ is displayed in (a) as a red dotted line.

tra are quite broad, owing to multi-excitonic effects, and other many-body interactions.³⁹ At $r < 20 \mu\text{m}$, the r -dependence of the PL maximum has the shape of an arrow, characterized by a decrease of the blue shift accompanied with a decrease of intensity (note the logarithmic color-encoding of the intensity). This emission profile will be referred to as the arrow-shaped pattern.

At longer distances ($r > 20 \mu\text{m}$), the PL energy is nearly constant, but the signal persists at surprisingly long distances. For Samples A and B, we observe excitonic emission up to $100 \mu\text{m}$ away from the generation spot. For Sample C, with the smallest initial energy shift, the excitonic emission is still observable up to several tens of μm away from the excitation spot.

Figure 3(d) displays a color map of the QW peak emission wavelength as a function of the real-space coordinates (x, y) on the surface of Sample B. The above-mentioned central arrow-shaped region appears to be of circular symmetry, with a radius of $20 \mu\text{m}$. Then the PL peak wavelength remains nearly constant over distances as large as $100 \mu\text{m}$. Note that this wavelength is slightly altered by the presence of linear microscopic defects (cracks), most certainly owing to local variation of barrier composition and/or strain field, near such defects. Careful examination of Figure 3(a-c) also emphasizes small but reproducible fluctuations of both intensity and PL energy shift, when moving away from the exci-

tation spot. We attribute these features to local fluctuations of barrier composition and/or strain, which modify the local accumulation of excitons and therefore their energy.

IV.2. Temperature dependence of continuous-wave PL

Figure 4 shows the temperature dependence of the spatially-resolved PL spectra for Sample A, obtained at power density P_0 . One can observe the shrinkage of the spatial extension of the PL, when the temperature is increased. The PL signal falls below the detection threshold of the setup above a critical distance. This critical point can be referred to as an emission horizon, and it gets closer to the excitation spot as the temperature is increased.

IV.3. Time-resolved experiments

To get a deeper insight into the dynamics of exciton propagation, we performed low-temperature time-resolved PL experiments. By conjugating the temporal slit of the streak-camera to a given point on the surface sample, we are able to record the PL intensity collected

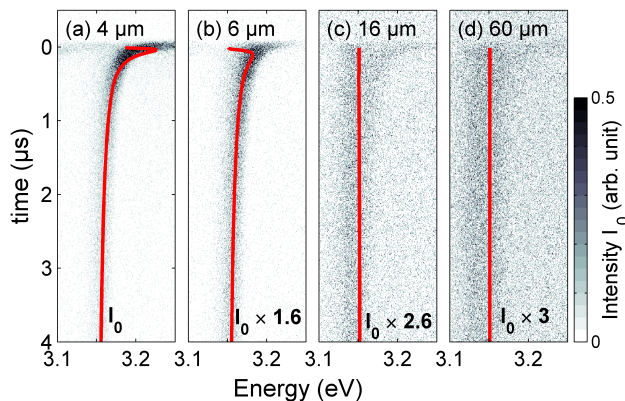


FIG. 5. Time evolution of the PL intensity I_0 for sample A, taken at $T = 4$ K and at (a) $4 \mu\text{m}$, (b) $6 \mu\text{m}$, (c) $16 \mu\text{m}$ and (d): $60 \mu\text{m}$ away from the excitation spot. The grayscale map indicates the intensity of emission at a given energy (horizontal scale) and at a given time (vertical scale). Red curves show the calculated change of transition energy, with time, for each distance.

at a given energy and at a given delay. Figure 5 shows examples, in the case of Sample A, of such time-dependent PL spectra, gathered at 4 different distances from the excitation spot. The time-domain has been restricted, here, to the first 4 microseconds of decay, but we have also measured such decays over a full time range of $50 \mu\text{s}$, and we have examined, too, the first 500 ns after the excitation time.

In the vicinity of the excitation spot (Figure 5(a)), the observed dynamics is the same as in spatially integrated experiments:³⁵ less than 50 ns after the excitation pulse, there is a sudden blue shift of the PL emission which results from the fast creation of dipolar excitons. Then, the exciton population decays and the PL peak energy decreases, until it reaches a steady value. Only in the latter regime, the intensity time-decay becomes exponential and provides us with the decay times that we gathered in Table I. As we increase the distance between the observation and the excitation spots (Figure 5(b)), we observe the same kind of behavior, but with a smaller initial blue shift: lower exciton densities are reached, consistent with the continuous-wave PL results. It can still be argued that the time needed to propagate over $6 \mu\text{m}$ is shorter than the time resolution available in these experiments. However, the most puzzling results are those obtained above $15 \mu\text{m}$ (Figure 5(c-d)). Indeed, even at these large distances, the PL signal builds up within a few nanoseconds after laser excitation. This observation proves that, for distances larger than $15\text{-}20 \mu\text{m}$, the observed exciton recombination can in no way arise from the propagation of those excitons, at least in the sense of a classical drift/diffusion process. As discussed in the next section, no reasonable diffusion coefficient can explain such a fast arrival of excitons far away from the excitation spot. However, the quenching of the PL tail observed at high temperatures indicates the excitonic origin

of this signal. We suggest that this observation results from the direct optical creation of secondary excitons, probably by the intense luminescence emitted under the laser spot and guided along the sample plane.

V. DISCUSSION AND MODELING

V.1. Origin of the arrow-shaped micro-PL pattern.

The arrow-shaped pattern apparent in Fig. 3(a-c) is a signature of the decreasing density of excitons, when the distance from the excitation spot increases. The dipole-dipole repulsion between excitons pushes them away from the excitation spot. Exciton propagation, accompanied by recombination, results in a decreasing exciton density. Generation, diffusion, drift, localization, radiative and nonradiative recombination are the competing mechanisms that we need to unravel, in order to model quantitatively our observations. We will assume that the blue shift directly reflects the local exciton density, whereas the PL intensity also results from the competition between radiative and non-radiative recombination processes. The spatial dependence of the blue shift, observed less than $20 \mu\text{m}$ away from the excitation spot, appears to be temperature independent below $T \leq 50$ K, within our experimental resolution. Since drift mechanisms are typically temperature dependent because of the Einstein relation, we can first infer that either the thermalization is not complete below $T=50$ K for short propagation distances, or that the exciton drift plays only a minor role here, due to the complex multiscale disorder potential.

The simplest way to reproduce the arrow-shaped diffusion pattern is to consider the diffusion of excitons generated by a delta-peaked excitation pulse at $r = 0$. Let us assume a constant diffusion coefficient D and a constant recombination rate R . Far from the excitation spot, the steady state diffusion equation is reduced to $D\Delta n = Rn$. This equation has an analytical solution: $\phi_0 n = A \times \mathcal{K}_0(r\sqrt{R/D})$, where A is a constant and \mathcal{K}_0 is the modified Bessel function of the second kind. This solution with $A = 0.1$ eV and $\sqrt{D/R} \sim 12 \mu\text{m}$ is shown by the red curve in Fig. 4(a) that we superposed onto the PL map. Even though we know that this model is based on the un-satisfied assumption of a constant exciton lifetime and a constant diffusion coefficient, it reproduces reasonably the overall shape of the PL spatial dependence.

V.2. Origin of the PL tail

A model based on purely diffusive propagation of IXs can, in principle, reproduce both the PL arrow-shape and the absence of temperature dependence, for $r < 20 \mu\text{m}$. On the other hand, the tail of the PL line, for $r > 20 \mu\text{m}$ cannot be reproduced by diffusion of excitons, because it would imply an anomalously high diffusion constant. Indeed, time-resolved measurements of PL at $60 \mu\text{m}$

from the excitation spot indicate that excitonic emission builds up in less than 100 ns after the excitation pulse (Fig. 5(d)). This cannot either be reproduced by the exciton drift, because of the weak exciton density gradient observed at $r > 20 \mu\text{m}$. We therefore suggest that a significant part of the higher-energy photons emitted around $r = 0$ by the QW itself is guided along the sample plane and is capable of creating, at larger distances, secondary excitons. Let us now address the temperature dependence of this emission and the reduction of the horizon. First of all, a common property of III-nitride-based heterostructures is a high density of nonradiative recombination centers (which are mainly threading dislocations), of the order of 10^{10} cm^{-2} . This is the case in the present heteroepitaxial QWs. Therefore, as the temperature delocalizes IXs, it also enhances the rate of their capture by those nonradiative traps. Given the very large values of the radiative lifetimes in our samples, at least in the unscreened regime at $r > 20 \mu\text{m}$, the competition between slow radiative and faster nonradiative recombinations explains why PL signals are quenched, when the temperature is increased, for distances exceeding a certain horizon. This horizon is simply determined by the exciton nonradiative recombination rate, which increases with the temperature.

V.3. The transport equation

In this section, we describe a formal model for the exciton propagation. In first approximation we neglect the thermalization effects and consider that excitons are close to the lattice temperature as soon as they leave the excitation spot. The equation for the in-plane transport of indirect excitons is:⁴⁰

$$\frac{\partial n}{\partial t} = -\nabla \cdot \mathbf{J} + G - Rn, \quad (3)$$

where n is the exciton density, G and R are the generation and recombination rates, respectively, \mathbf{J} is the IX current density, which can be split into drift and diffusion components: $\mathbf{J} = \mathbf{J}_{\text{drift}} + \mathbf{J}_{\text{diff}}$.

The diffusion current \mathbf{J}_{diff} is given by:

$$\mathbf{J}_{\text{diff}} = -D\nabla n \quad (4)$$

where D is the exciton diffusion coefficient. The random disorder potential, caused by alloy disorder in the barrier and by QW width fluctuations, hinders the in-plane exciton propagation along the GaN/AlGaIn QW plane.⁴¹ For high exciton densities, however, the potential fluctuations are screened and excitons, on average, become more mobile. This effect can be taken into account in the framework of a thermionic model,⁴² which gives the following density dependence:

$$D = D_0 \exp\left(\frac{-U_0}{\phi_0 n + k_B T}\right), \quad (5)$$

where D_0 is the diffusion constant in the absence of disorder and U_0 is the amplitude of the disorder potential at zero density. This formulation implicitly accounts for the modification of the fluctuation potential by screening of the internal electric field.⁴² We estimate $U_0 \simeq 30 \text{ meV}$, which corresponds to the energy shift induced by a fluctuation of one monolayer in the QW width. D_0 represents the free exciton bulk diffusion coefficient, which is reached when the disorder potential U_0 is negligible compared to the blue shift $\phi_0 n$ and/or the thermal energy $k_B T$.

The drift term $\mathbf{J}_{\text{drift}}$ in Eq. 3 can be tentatively rewritten as:

$$\mathbf{J}_{\text{drift}} = -\mu n \nabla(\phi_0 n) \quad (6)$$

where the exciton mobility μ is connected to the diffusion coefficient D via the Einstein relation:

$$\mu = \frac{D}{k_B T}. \quad (7)$$

In Eq. 6, the drift is governed by the self-induced potential $\phi_0 n$ only. We expect this relation to be valid only when $U_0 \ll \phi_0 n$, *i.e.* when the disorder potential is efficiently screened.

The generation term G which appears in Eq. 3 will be divided into two parts: $G = G_0 + G_{bg}$. The first term G_0 corresponds to the exciton generation under the laser spot:

$$G_0 = (2N_p/R_0^2) \exp(-r^2/R_0^2),$$

where r is the distance from the center of the excitation spot, $R_0 = 500 \text{ nm}$ is the spot radius, N_p is the exciton generation rate. The second term G_{bg} is semi-phenomenological. We introduce it because any attempt to model the ultra-fast appearance of exciton recombination at $r > 20 \mu\text{m}$ within a drift-diffusion model using reasonable diffusion coefficients is doomed to fail. Our current understanding of this phenomenon is that a significant part of the higher-energy photons emitted around $r = 0$ are most certainly guided along the sample plane, between the QW and the surface. Despite small absorption coefficients, some of those photons can be reabsorbed in the regions of $r > 20 \mu\text{m}$ and recycled, by thermalization, into low-energy excitons, with densities comparable to, or lower than 10^{11} cm^{-2} . This explains the constancy of emission energy versus r , whereas the nearly constant intensity, for $20 < r < 100 \mu\text{m}$, is consistent with the weakness of the absorption coefficient, *i.e.* with the vanishing attenuation of the excitation. We therefore introduce a weak background source term G_{bg} to mimic this photon-recycling process. For simplicity, we take it independent of r .

The recombination rate R can be expressed as a function of the radiative and nonradiative recombination times τ_{rad} and τ_{nrad} :

$$R = 1/\tau_{\text{rad}} + 1/\tau_{\text{nrad}}. \quad (8)$$

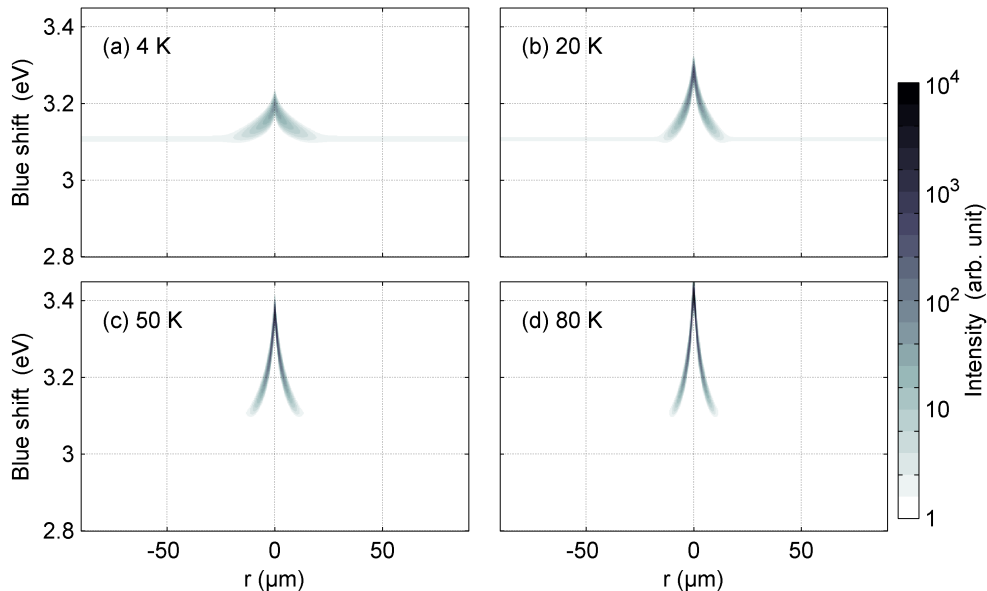


FIG. 6. Grayscale map of the PL intensity calculated using Eq. 3 at different temperatures: 4, 20, 50 and 80 K as a function of the distance r from the excitation spot, and emission energy. The drift current given by Eq. 6 is taken into account. A phenomenological Gaussian broadening of the blue shift with a standard deviation of 70 meV has been introduced.

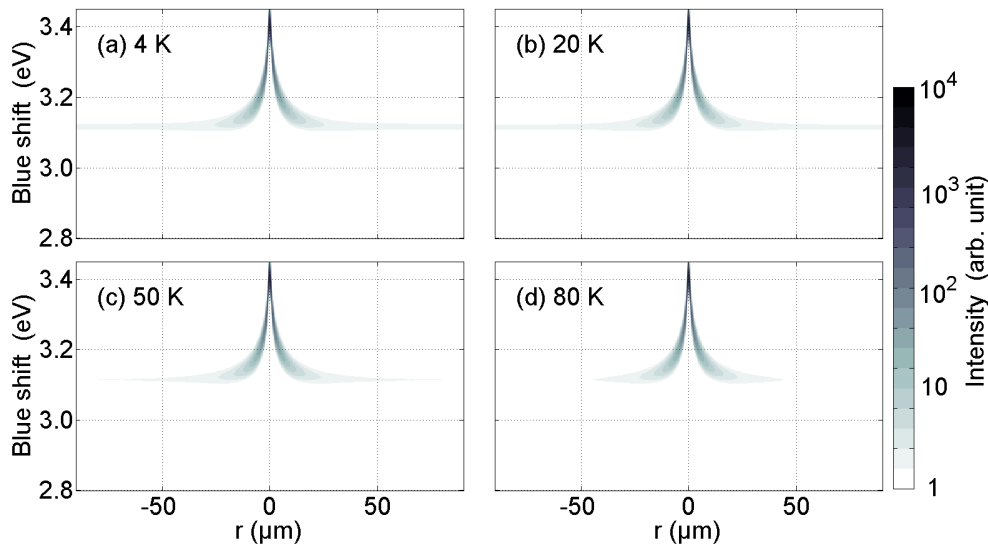


FIG. 7. Grayscale map of the PL intensity, calculated as in Fig. 6 except that only the diffusion current J_{diff} (Eq. 4) is taken into account whereas the drift current J_{drift} (Eq. 6) is neglected.

The density dependent radiative recombination time $\tau_{\text{rad}} = \tau_{\text{rad}}^0 \exp(-n/\gamma)$ is determined according to the procedure described in the Section II.1, and does not depend on the temperature. By contrast, nonradiative time is temperature dependent. Indeed, when either exciton concentration or temperature increases, the excitons delocalization leads to more efficient capture of excitons on the nonradiative defects. These effect gives rise to the quenching of the PL at high temperature and determine

the exciton nonradiative horizon.

According to Refs. 43 and 44, the density of a exciton flux j flowing through a nonradiative recombination center of size $a \ll l$, l the mean free path, is independent of the shape of the center and equal to $j = nv/4$, where v is the average absolute velocity of the excitons for which a uniform distribution of the velocity direction is assumed. Therefore, assuming that all excitons which reach the recombination center are captured, the rate of

exciton capture is proportional to

$$1/\tau_{nrad} = \frac{nv}{4} 2\pi a/l_{nrad}^2 \quad (9)$$

where l_{nrad} is the average distance between the nonradiative recombination centers. Using the relation $D = v^2\tau/2$, where τ is the momentum relaxation time, we finally obtain the relation:

$$\tau_{nrad} = \tau_{nrad}^0 \exp\left(\frac{-U_0/2}{\phi_0 n + k_B T}\right), \quad (10)$$

where τ_{nrad}^0 , which we will use as an adjustable parameter, is the nonradiative recombination time in the absence of structural disorder $U_0 = 0$.

As the in-plane exciton propagation has a cylindrical symmetry centered at the excitation spot, Eq. 3 reduces to a one-dimensional partial differential equation. For the numerical resolution, we implemented a one-dimensional finite element scheme, where the non-linear Eq. 3 is replaced by a linear one by using the Euler method.⁴⁵ For the simulation of the time-resolved experiments, the temporal evolution of the exciton density is calculated within a time-implicit scheme, assuming generation rates G_0 and G_{bg} to be non-zero only at the initial time $t = 0$. For the experiments under constant illumination, we take $\partial n/\partial t = 0$ and G is time-independent. In both cases we use Neumann boundary conditions at $r = 0$ and $r = 200 \mu\text{m}$. Finally, the PL intensity is obtained from the exciton density as n/τ_{rad} .

D_0	τ_{nrad}^0	U_0	N_p	G_{bg}
1	1	30	(a) $1.2 \times 10^4 \delta(t=0)$ (b) 1.2×10^{12}	$N_p \times 10^8$

TABLE II. Main parameters of the fit for sample A. The diffusion constant is given in cm^2/s , the recombination time in μs , the disorder potential in meV. N_p is the number of exciton generated per second for (a) time-resolved experiment and (b) experiments under continuous illumination. The background generation G_{bg} is in $\text{m}^{-2}\text{s}^{-1}$ and is taken proportional to N_p . δ is the Dirac delta function.

V.4. Numerical results and discussion

The numerical implementation of the model points out that drift current is not the dominant transport mechanism for excitons. In all our attempts to introduce a drift current, increasing temperature resulted in a progressive shrinking of the spatial extension of the calculated arrow-shaped PL, and an increasing blue shift. Typical results of the simulation for Sample A are reported in Fig. 6. We have introduced the Gaussian broadening of the PL energy with the standard deviation $\sigma = 70 \text{ meV}$, to account for the broadened PL lines. One can see that the arrow-shaped feature is significantly temperature-dependent, in

contrast with the experimental result shown in Fig. 4. Similar results have been obtained for the two other samples.

The discrepancy with the experimental data suggests that Eq. 6 strongly overestimates the drift current, probably because the gradient of exciton density induces too small energy variations compared to the disorder amplitude, which can present a complex multi-scale profile. By contrast, when only the diffusion term is included, the simulation gives results strikingly similar to the experiments. The solutions of Eq. 3, assuming $\mathbf{J}_{\text{drift}} = 0$, are presented in Figure 7. By using the set of fixed parameters gathered in Table I and fitting parameters given in Table II we reproduce the emission patterns observed experimentally. The onset of the nonradiative horizon, as the temperature is increased, is well accounted for by the thermionic description of the delocalization-capture of excitons by defects.

This purely diffusive model also allows us to describe the time resolved experiments, using the same set of parameters. The results of the calculation for Sample A is shown by red curves in Fig. 5. One can see that the onset of the PL blue shift associated which exciton diffusion from the excitation spot towards the detection point is probably too fast to be resolved in the present experiments (Fig. 5(a,b)). On the same time, the immediate (in less than 100 ns) onset of the excitonic emission at large distances from the excitation spot has the same origin as the PL tail in the spatially resolved images. It is due to secondary absorption of the PL guided in the sample plane, described by the semi-phenomenological generation term G_{bg} .

The arrow-shaped patterns of PL measured and calculated here are similar to the patterns that have been reported in GaAs CQWs under external gate voltage^{3,40,46}. However, the typical energy and distance scale are quite different in our structures. In particular, the energy scale of the arrow-shaped feature reaches 200 meV, exceeding by more than an order of magnitude the GaAs values. Modeling of the PL patterns within the exciton drift-diffusion model taking into account the particularities of the nitrides, suggests that even in the highest density and lowest temperature regime exciton transport is dominated by density-activated diffusion, rather than by the drift current. This effect seems to be proper to GaN QWs, but further studies are necessary for its better understanding. In particular the design of heterostructures without guided PL and the resulting emission would be useful.

It is instructive to analyze the density dependence of the diffusion coefficient (Eq. 5) and recombination times (Eq. 2, Eq. 10), assumed in this model. These quantities are shown in Fig. 8 for Sample A. The density scale (upper x -axis) is reported together with the blue shift scale (lower x -axis). One can see that at low temperatures ($T = 4 \text{ K}$) the diffusion coefficient is far from being constant in the range of the experimentally observed energy shifts. This results precisely from the dipole-dipole re-

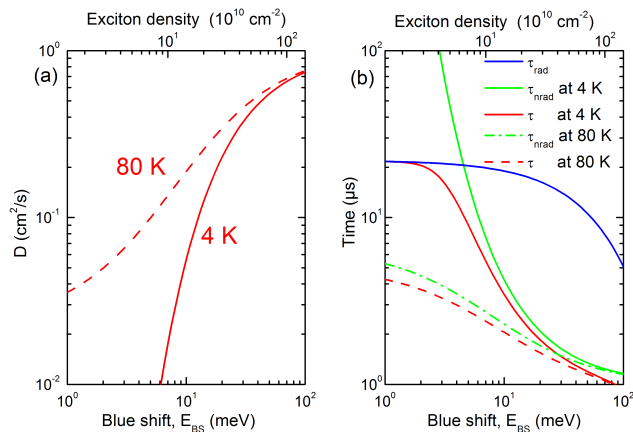


FIG. 8. Illustration of the modeling assumptions for Sample A. Diffusion coefficient (a) and exciton lifetime τ (b) as a function of the blue shift at $T=4$ K (red solid line) and $T=80$ K (red dashed line). Radiative and nonradiative components τ_{rad} and τ_{nrad} are shown by blue and green lines, respectively.

pulsion energy, $E_{BS} = \phi_0 n$. The diffusion becomes exponentially slow at low density and only when the disorder is screened by the dipole-dipole repulsion the diffusion coefficient D reaches asymptotically the maximum value of $D = D_0 = 1 \text{ cm}^2/\text{s}$. This behavior is smeared out at higher temperatures, because the thermal energy contributes to the delocalization. For high exciton densities, comparable to, or larger than 10^{12} cm^{-2} , the random potential fluctuations U_0 are overcome even at $T = 80$ K, because $E_{BS} \gg U_0, k_B T$. This corresponds to the situation near $r = 0$ in our PL experiments, and explains why the change of the temperature has very little influence on the observations in this region. As the exciton density decreases from 10^{12} to 10^{11} cm^{-2} , the diffusion coefficient is reduced by two orders of magnitude, for $T = 4$ K, owing to the relocalization of carriers. This is what occurs, as the distance r is increased: the situation goes continuously from the domination of mobile, delocalized excitons to frozen excitons, localized at random fluctuations. If the temperature is increased, as shown in Fig. 8, thermal excitation takes over ($k_B T > U_0, E_{BS}$) and therefore the diffusion persists even at lower exciton densities.

Similarly, Fig. 8(b) shows the calculated exciton lifetime τ and its radiative and nonradiative components. Despite a much smaller radiative lifetime at high densities, the radiative efficiency, there, is not maximum: the delocalization of carriers favors their nonradiative capture. On the other hand, at $T = 4$ K, reducing the density dramatically increases the radiative lifetime but increases the nonradiative lifetime even more, due to the relocalization of excitons. Therefore, at $T = 4$ K, the radiative efficiency is close to 1 for low exciton densities and the effective lifetime equals the radiative lifetime. At higher temperature the nonradiative time is less af-

ected by the exciton density, due to the more important contribution of the thermal energy to the exciton delocalization. Even at low density the recombination time never reaches the radiative limit (which is temperature independent). This leads to the onset of the nonradiative horizon, well reproduced by this model. Finally, while both D and τ change significantly with n , their product $D\tau$ changes much less. That is why the simple model of constant diffusion coefficient and constant recombination time presented in Fig. 4(a) could successfully fit at least the PL blue shift.

VI. CONCLUSIONS

In conclusion, we have studied GaN/(Al,Ga)N c -plane quantum well structures using space and time-resolved PL spectroscopy. In the emission pattern that we represent in the distance/energy coordinate space two distinct features are identified: (1) an arrow-shaped pattern up to $20 \mu\text{m}$ from the excitation spot, which does not depend on the temperature (up to 80 K) and (2) a long range tail of the emission at constant energy, which disappears when the temperature is increased. The combination of spectral, spatial and temporal imaging of the exciton emission, and a detailed model of the transport and recombination processes, allow to determine the most relevant phenomena explaining the short- and long-distance limits, and the short and long timescales. The arrow-shaped pattern is due to the density-activated exciton diffusion away from the excitation spot, and the density dependent emission energy. In contrast with GaAs-based structures, exciton transport is dominated by density-activated diffusion, rather than by the drift current. The long-range PL tail is attributed to secondary excitons, directly created at long distances by higher-energy photons emitted around $r = 0$ by the QW itself and guided along the sample plane. This emission is efficiently quenched at high temperature beyond a certain distance, that we identify as the nonradiative horizon.²⁴

The results obtained in this work suggest that GaN/AlGaIn QWs constitute a very promising system for the study of dipolar excitons and exciton-based devices. We have demonstrated that exciton transport takes place over more than $10 \mu\text{m}$ up to 80 K. Reducing the dislocation density by using GaN rather than sapphire substrate could substantially increase this distance. Consequently, such structures are promising for the studies of cold exciton gases and related quantum phenomena. The possibility to spatially separate the generation spot from the cold excitons reservoir could be crucial to achieve the quantum regime. In terms of the transport mechanisms, it could be interesting to develop new models, taking into account energy relaxation and the formation of the phonon replica. The latter phenomenon is quite strong in the wurtzite semiconductors, compared to their cubic counterparts, and might affect the propagation of excitons. Other polar wide-band gap materials, such as

ZnO/ZnMgO with excitons stable at room temperature is another possible research direction.

VII. ACKNOWLEDGEMENTS

We are grateful to K. V. Kavokin, M. I. Dyakonov, L. V. Butov and D. Scalbert for valuable discussions and acknowledge the support of EU ITN INDEX PITN-GA-2011-289968.

-
- ¹ A. Moskelenko and D. Snoke, *Bose-Einstein Condensation of Excitons and Biexcitons* (Cambridge University Press, 2005).
- ² L. V. Butov, A. Imamoglu, A. V. Mintsev, K. L. Campman, and A. C. Gossard, *Phys. Rev. B* **59**, 1625 (1999).
- ³ Z. Vörös, R. Balili, D. W. Snoke, L. Pfeiffer, and K. West, *Phys. Rev. Lett.* **94**, 226401 (2005).
- ⁴ L. V. Butov, A. L. Ivanov, A. Imamoglu, P. B. Littlewood, A. A. Shashkin, V. T. Dolgoplov, K. L. Campman, and A. C. Gossard, *Phys. Rev. Lett.* **86**, 5608 (2001).
- ⁵ L. V. Keldysh and A. N. Kozlov, *JETP Letters* **5**, 238 (67).
- ⁶ L. V. Butov and A. I. Filin, *Zh. Eksp. Teor. Fiz.* **114**, 1115 (1998), [*JETP* 87, 608-611 (1998)].
- ⁷ A. A. High, J. R. Leonard, A. T. Hammack, M. M. Fogler, L. V. Butov, A. V. Kavokin, K. L. Campman, and A. C. Gossard, *Nature* **483**, 584 (2012).
- ⁸ M. Alloing, M. Beian, D. Fuster, Y. Gonzalez, L. Gonzalez, R. Combescot, M. Combescot, and F. Dubin, *cond-mat.quant-gas arXiv:1304.4101v2* (2014).
- ⁹ R. Rapaport, G. Chen, and S. H. Simon, *Phys. Rev. B* **73**, 033319 (2006).
- ¹⁰ L. V. Butov, *Journal of Physics: Condensed Matter* **16**, R1577 (2004).
- ¹¹ C. Schindler and R. Zimmermann, *Phys. Rev. B* **78**, 045313 (2008).
- ¹² L. Kappei, J. Szczytko, F. Morier-Genoud, and B. Deveaud, *Phys. Rev. Lett.* **94**, 147403 (2005).
- ¹³ M. Alloing, A. Lemaître, and F. Dubin, *EPL* **93**, 17007 (2011).
- ¹⁴ T. Huber, A. Zrenner, W. Wegscheider, and M. Bichler, *physica status solidi (a)* **166**, R5 (1998).
- ¹⁵ G. Chen, R. Rapaport, L. N. Pfeiffer, K. West, P. M. Platzman, S. Simon, Z. Vörös, and D. Snoke, *Phys. Rev. B* **74**, 045309 (2006).
- ¹⁶ A. A. High, A. K. Thomas, G. Grosso, M. Remeika, A. T. Hammack, A. D. Meyertholen, M. M. Fogler, L. V. Butov, M. Hanson, and A. C. Gossard, *Phys. Rev. Lett.* **103**, 087403 (2009).
- ¹⁷ M. Remeika, M. M. Fogler, L. V. Butov, M. Hanson, and A. C. Gossard, *Appl. Phys. Lett.* **100**, 061103 (2012).
- ¹⁸ K. Cohen, R. Rapaport, and P. V. Santos, *Phys. Rev. Lett.* **106**, 126402 (2011).
- ¹⁹ E. A. Cornell and C. E. Wieman, *Rev. Mod. Phys.* **74**, 875 (2002).
- ²⁰ W. Ketterle, *Rev. Mod. Phys.* **74**, 1131 (2002).
- ²¹ M. Rontani and L. J. Sham, *Phys. Rev. B* **80**, 075309 (2009).
- ²² A. A. High, A. T. Hammack, L. V. Butov, M. Hanson, and A. C. Gossard, *Optics Lett.* **32**, 2466 (2007).
- ²³ G. Winbow, Alexander, T. Hammack, Aaron, V. Butov, Leonid, and C. Gossard, *Nano Letters* **7**, 1349 (2007).
- ²⁴ G. Grosso, J. Graves, A. T. Hammack, A. A. High, B. L. V., M. Hanson, and A. Gossard, *Nat. Photon.* **3**, 577 (2009).
- ²⁵ Y. Y. Kuznetsova, M. Remeika, H. A. A., A. T. Hammack, L. V. Butov, M. Hanson, and A. C. Gossard, *Optics Lett.* **35**, 1587 (2010).
- ²⁶ P. Andreakou, S. V. Poltavtsev, J. R. Leonard, E. V. Calman, M. Remeika, Y. Y. Kuznetsova, L. V. Butov, J. Wilkes, M. Hanson, and A. C. Gossard, *Applied Physics Letters* **104** (2014), 10.1063/1.4866855.
- ²⁷ Y. Fu and K. A. Chao, *Phys. Rev. B* **43**, 12626 (1991).
- ²⁸ A. Janotti and C. G. V. de Walle, *Reports on Progress in Physics* **72**, 126501 (2009).
- ²⁹ F. Bernardini and V. Fiorentini, *Phys. Rev. B* **57**, R9427 (1998).
- ³⁰ J. Seo Im, H. Kollmer, J. Off, A. Sohmer, F. Scholz, and A. Hangleiter, *Phys. Rev. B* **57**, R9435 (1998).
- ³¹ C. Morhain, T. Bretagnon, P. Lefebvre, X. Tang, P. Valvin, T. Guillet, B. Gil, T. Taliercio, M. Teisseire-Dominelli, B. Vinter, and C. Deparis, *Phys. Rev. B* **72**, 241305 (2005).
- ³² M. Leroux, N. Grandjean, M. Lügt, J. Massies, B. Gil, P. Lefebvre, and P. Bigenwald, *Phys. Rev. B* **58**, R13371 (1998).
- ³³ N. Grandjean, J. Massies, and M. Leroux, *Applied Physics Letters* **74**, 2361 (1999).
- ³⁴ P. Bigenwald, P. Lefebvre, T. Bretagnon, and B. Gil, *physica status solidi (b)* **216**, 371 (1999).
- ³⁵ J. Lefebvre, J. M. Fraser, P. Finnie, and Y. Homma, *Phys. Rev. B* **69**, 075403 (2004).
- ³⁶ A. Morel, P. Lefebvre, S. Kalliakos, T. Taliercio, T. Bretagnon, and B. Gil, *Phys. Rev. B* **68**, 045331 (2003).
- ³⁷ S. Kalliakos, P. Lefebvre, X. Zhang, T. Taliercio, B. Gil, N. Grandjean, B. Damilano, and J. Massies, *physica status solidi (a)* **190**, 149 (2002).
- ³⁸ X. B. Zhang, T. Taliercio, S. Kalliakos, and P. Lefebvre, *J. Phys.: Condens. Matter* **13**, 7053 (1998).
- ³⁹ G. Rossbach, J. Levrat, G. Jacopin, M. Shahmohammadi, J.-F. Carlin, J.-D. Ganière, R. Butté, B. Deveaud, and N. Grandjean, *Phys. Rev. B* **90**, 201308 (2014).
- ⁴⁰ A. L. Ivanov, L. E. Smallwood, A. T. Hammack, S. Yang, L. V. Butov, and A. C. Gossard, *Europhys. Lett.* **73**, 920 (2006).
- ⁴¹ M. Gallart, P. Lefebvre, A. Morel, T. Taliercio, B. Gil, J. Allègre, H. Mathieu, B. Damilano, N. Grandjean, and J. Massies, *physica status solidi (a)* **183** (2001).
- ⁴² A. L. Ivanov, *Europhysics Letters* **59**, 586 (2002).
- ⁴³ Y. M. Kagan and V. I. Perel, *Uspekhi Fizicheskikh Nauk* **81**, 409 (1963).
- ⁴⁴ E. A. Avrutin and M. E. Portnoi, *Soviet Physics Semiconductors-Ussr* **22**, 968 (1988).
- ⁴⁵ F. Hecht, *J. Numer. Math.* **20**, 251 (2012).
- ⁴⁶ L. V. Butov, A. C. Gossard, and D. S. Chemla, *Nature* **418**, 751 (2002).