



**HAL**  
open science

## Quantitative assessment method of illegal dumping in small rivers. Case study: Neamt County, Romania

Florin Constantin Mihai

► **To cite this version:**

Florin Constantin Mihai. Quantitative assessment method of illegal dumping in small rivers. Case study: Neamt County, Romania. Bulletin UASVM Agriculture, 2013, 70 (2), pp.397-402. hal-01150689

**HAL Id: hal-01150689**

**<https://hal.science/hal-01150689>**

Submitted on 22 Jun 2015

**HAL** is a multi-disciplinary open access archive for the deposit and dissemination of scientific research documents, whether they are published or not. The documents may come from teaching and research institutions in France or abroad, or from public or private research centers.

L'archive ouverte pluridisciplinaire **HAL**, est destinée au dépôt et à la diffusion de documents scientifiques de niveau recherche, publiés ou non, émanant des établissements d'enseignement et de recherche français ou étrangers, des laboratoires publics ou privés.

## Quantitative Assessment Method of Illegal Dumping in Small Rivers Case Study: Neamț County, Romania

Florin -Constantin MIHAI\*

Faculty of Geography and Geology „Alexandru Ioan Cuza” University,  
Carol I Avenue No. 20A, RO-700505, Iași, Romania; mihai.florin86@yahoo.com

**Abstract.** Poor waste management facilities from Romanian rural areas lead to uncontrolled waste disposal on improper sites. These bad practices are frequently in the proximity of built-up areas, therefore, the small rivers inside these areas are susceptible to waste dumping. The paper aims to develop a quantitative assessment method of waste disposed into such small rivers from extra-Carpathian region of Neamț county. The lack of organized waste collection services from 2003 lead to high values of waste disposed in such rivers frequently over 15 t/yr for each one. Despite some improvements compared to 2003 the small rivers inside built-up areas of villages are still highly exposed to waste dumping. The values vary depending on demographic and geographic features of each locality and on the other side, due to the presence of an organized waste collection system. The results and comparative analysis between 2003 and 2010 show some positive changes but the illegal dumping issue is far from being eliminated.

**Keywords:** assessment method, illegal dumping, rivers, waste management, rural areas

### INTRODUCTION

Illegal dumping is most common environmental threat related to waste management issue across the world (Chen, 2010; Ichinose and Yamamoto, 2011, Karak et al., 2012 ; Rotich *et al.*, 2006).

Also, *EU acquis* fights against the bad practices encountered across member countries but major disparities are outlined concerning the performance of national or regional waste management systems (Manzzati and Zoboli, 2008; Mihai and Apostol, 2012a). Rural areas from Romania are susceptible to illegal dumping due to the poor waste collection services (Apostol and Mihai, 2012; Mihai, 2012a). Development of waste management infrastructure is emerging in last years at regional and local scale (Mihai și Apostol, 2012b) but illegal dumping remains a major environmental threat.

Quantitative assessment methods of illegal dumping are performed in recent years for various geographical conditions (Mihai, 2012b, 2013; Mihai *et al.*, 2012a, 2013).

These methods are based on specific indicators calculated at commune or village level. Spatial analysis of rural dumpsites parameters (surfaces, volumes) also reflects certain patterns in their distribution (Mihai *et al.*, 2012b; Mihai and L m ănu, 2013).

Geography of waste studies these interactions between natural, demographic and socio-economic features and their implication to a certain territory (Bertrand and Laurent, 2003; Le Dorlot, 2004; Davies, 2008; Mihai, 2012c).

Rivers in the proximity of human settlements are the most vulnerable environmental factors to such bad practices.

## MATERIALS AND METHODS

The small rivers located in Subcarpathian and plateau regions of the county are susceptible to uncontrolled waste disposal, this bad practice were also confirmed by field observations in 2009-2011. This method aims to quantify the amounts (estimates) of waste uncontrolled disposed in small rivers that cross the built-up areas of villages .

It is based on the same proximity and convenience principle as others quantitative methods applied at commune level for administrative territorial units (Mihai, 2012b) or for mountain rivers at village scale (Mihai *et al.*, 2012a), but it is more difficult to apply because the built-up area of a village is often crossed by several rivers, and the creeks in the proximity or within villages are an *alternative option* along with other waste disposal sites (loam sites, pastures, degraded lands, local roadsides). Therefore, the gap distance between the outer limit of the built-up area and the creek (small river) is less between 0.001 to 0.6 km.

Also, villages taken into consideration must not be crossed by several small rivers because the estimation per creek can not be achieved. Values of  $Q_{ud}$  indicator (amounts of waste uncontrolled disposed) calculated for 2003 and 2010 provide a quantitative approach of illegal dumping impact related to the average distance between the outer limit of the built-up area and the creek in question according to the table 1:

Tab.1

Correlation between  $Q_{ud}$  and average distance ( $A_d$ )

Average distance between creek & outer limit of built-up area (village)	The share of $Q_{ud}$
600 -400 (m)	0.2
399-300	0.4
299-200	0.6
199-100	0.8
99-1	0.9

Thus, the amounts of waste disposed in small rivers/creeks ( $Q_{wsr}$ ) is calculated as follows:  $Q_{wsr} (t/yr) = Q_{ud} * S_{Ad}$ ,  $S_{Ad}$  – share of  $Q_{ud}$  indicator according to  $A_d$

The average distance is calculated at least in 5 reference points for small villages and 10 reference points in case of stretched villages along the valleys (eg Urecheni, R deni) or 5/5 points for both sides of the streams that cross through built-up areas. These distances are measured using GoogleEarth satellite images (an easy and accessible tool), further is performed an arithmetic mean of these benchmarks as shown in fig.1

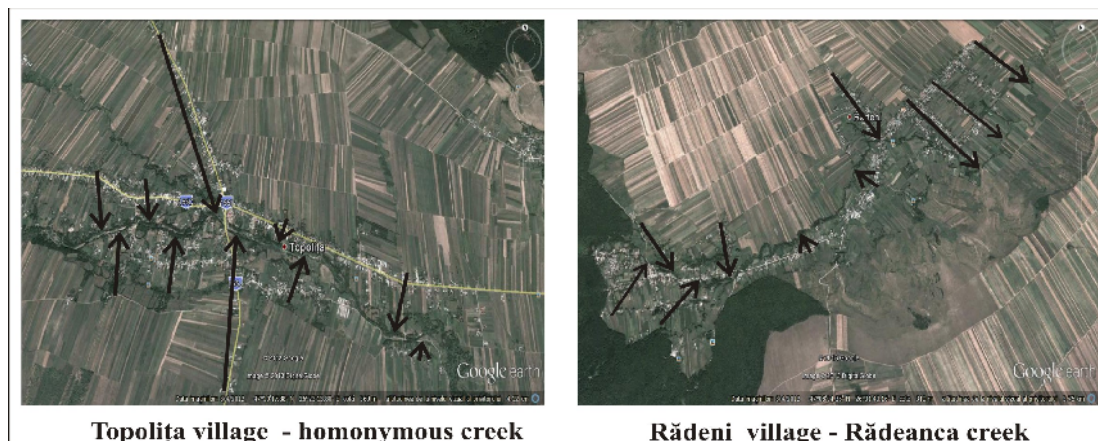


Fig. 1. Reference points for calculation of average distance ( $A_d$ )

Most vulnerable creek is that which has a course through the middle of built-up area of a well populated village, without access to waste collection services or a low collection efficiency. This method can estimate the impact of a settlement (concerning the waste dumping) on a creek in the proximity only in certain local geographical conditions.

In this context, for the most accurate estimation is taken into consideration only those water courses that meet the following conditions:

- are located in extra-Carpathian region of county,
- the creeks longitudinally cross the built-up areas of localities
- these built-up areas must not be crossed by several water courses (except for small tributaries within the built-up areas)
- average distance of the last households (outer limit of the built-up area) from the creek must not exceed 600m.

The assessment is performed for 2003 (pre-accession period) and 2010 (post-accession) according to the past and current waste management facilities from study area.

## RESULTS AND DISCUSSIONS

Tentacular morphology of built-up areas along the streams does not allow an adequate measurement of reference points in order to fit the whole village in a certain class of  $Q_{ud}$  indicator (according to  $A_d$ ) especially for villages from Subcarpathian region such as Agapia, Ghind oani, Grum ze ti, Bal te ti, Rucesti & Petricani communes or for those located in Moldavian Plateau (eg. Stani a, Ion Creang etc).

Demographic factors (population of the village), the access to sanitation services, the morphology of the village, the average distance between the outer limit of the built-up area and the stream have direct implications for values of  $Q_{wsr}$  indicator.

This paper includes the impact assessment of 18 villages in the vicinity of small rivers, it is noted that the most vulnerable in terms of estimated amounts (in 2003) were the following creeks: Râiosu (73t/yr), Tolicici (56,4 t/yr), Poiana, Târzia, R deanca, Ruginoasa, Sârbilor (> 30 t/yr), Bozieni, Obâr ia, Valea Morilor Valea Neagr (> 20 t/yr). On the other side, values above 20 t / yr of  $Q_{wsr}$  were recorded in 2010 for Râiosu (30.8 t / yr), R deanca (41.2 t / yr), Tolicici and Valea Neagr (> 20 t / yr) creeks.

In addition to access of waste collection services which decreases the value of  $Q_{ud}$  indicator, lower values of  $Q_{wse}$  is also due to the average distance > 400m between the outer limit of built-up area and the creek course analyzed as for settlements Agapia, Topoli a, Negre ti or one the other side, associated with a low population such as for Rocna village for Glodeni creek. Also, the small villages reflect the low values of  $Q_{wsr}$  indicator even if the share of average distance is 0.8 (eg. Târzia village).

Comparative analysis  $Q_{wsr}$  indicator between 2003 (when waste collection services were absent in most rural areas) and 2010 (when improper dumpsites were closed and more or less proper waste management services have been implemented) reflects improvements in reduction of illegal dumping impact on small rivers, the difference between 482.32 t / 287.54 t is significant.

However, field observations in 2009-2011 revealed that this bad practice is still present across localities with access to such services such as Târpe ti, Petricani & Ing re ti villages (waste dumped into Topolita creek), Agapia village (Agapia creek), Oglinzi village (S rata creek).

Tab. 2

Values of  $Q_{wsr}$  indicator for 2003 and 2010

Village	Creek (stream)	$A_d$	$S_{Ad}$	$Q_{ud}2003$	$Q_{wsm}2003$	$Q_{ud}2010$	$Q_{wsr}2010$
Urecheni	<i>Răiosu</i>	0,39	0,4	182,785	73,114	77,04	30,816
R deni	<i>Rădeanca</i>	0,38	0,4	97,83	39,132	103,09	41,236
Valea Alba	<i>Valea Albă</i>	0,304	0,4	26,85	10,74	11,31	4,524
Târzia	<i>Târzia</i>	0,302	0,4	44,31	17,724	18,679	7,4716
Poiana	<i>Cule a</i>	0,338	0,4	49,54	19,816	20,88	8,352
Agapia	<i>Agapia</i>	0,407	0,2	79,09	15,818	47,62	9,524
Netezi	<i>Netezi</i>	0,182	0,8	13,6	10,88	5,733	4,5864
Tolici	<i>olici</i>	0,206	0,6	94	56,4	39,66	23,796
Topoli□a	<i>Topoli□a</i>	0,416	0,2	98,135	19,627	41,36	8,272
Negre ti	<i>Horai□a</i>	0,594	0,2	92,491	18,4982	97,464	19,4928
Ruginoasa	<i>Ruginoasa</i>	0,327	0,4	99,679	39,8716	42,01	16,804
Dulce ti	<i>Valea Neagr</i>	0,344	0,4	65,284	26,1136	68,79	27,516
Iuc a	<i>Bozieni</i>	0,216	0,6	40,513	24,3078	42,6	25,56
Lunca	<i>Poiana Lung</i>	0,181	0,8	20,13	16,104	21,22	16,976
Butn re ti	<i>Valea Morilor</i>	0,284	0,6	49,12	29,472	20,7	12,42
Bârjoveni	<i>Obâr ia</i>	0,285	0,6	40,63	24,378	17,126	10,2756
Secuieni	<i>Sârbilor</i>	0,298	0,6	58,6	35,16	24,13	14,478
Rocna	<i>Glodeni</i>	0,576	0,2	25,84	5,168	27,23	5,446
Total				1178,427	482,3242	726,642	287,5464

Villages without waste collection services (in 2003-2010) continued to dispose the waste generated on creeks such as Horai□a (Negre ti & Dobreni villages ), Alma (Dobreni village ), Iuc a (Bozieni village) etc this fact being confirmed by field observations.

Small rivers which crosses the Subcarpathian hills are mostly vulnerable to waste dumping in the proximity of villages or within built-up areas, this fact being also confirmed for localities which are not included in this case study (eg M rgineni, F urei & B lte ti communes etc). On the other hand, streams (direct tributaries of Bârlad river in the upper sector) which cross Valea Ursului, Oniceni & Bozieni communes are susceptible to waste disposal, but in a lower proportion, because the open dumps prevailed as as the main option of illegal dumping.

Despite the fact the small rivers are an option often used by local communities for waste dumping, there are some localities which are not susceptible to flooding and waste dumping on surface waters because either their built-up area is not crossed by a creek or it is located at a greater distance from water courses in the vicinity.

This situation is common for settlements developed on the fluvial terraces of major rivers such as: Nisipore ti (Bote ti commune), Hanu Ancu□ei (Tupila□i commune), Dumbrava Deal, Izvoare ( Dumbrava Ro ie commune), Plugari (Urecheni commune), Gher e□ti Noi, Te□cani (Gher e ti commune), S b oani & Traian (S b oani commune).

In these cases, open dumps were the main option in waste disposal, these sites occupied large areas and had higher volumes compared to other settlements in the county ( Mihai *et al.*, 2012, Mihai and L ma anu, 2013)

Also, other sites (rather than surface waters) susceptible to uncontrolled disposal of waste is typical for remote settlements, poor exposed to flooding located in the subcarpathian hills and plateau region such as : Cârlig (Dulce ti commune), Corni, Du e ti, Soci, Bordea ( tefan cel Mare commune), Unghi (Dragomire□ti commune), Tu□canii din Deal (Bahna commune), Baratca (Bârgoani commune), Bogze ti (Secuieni commune), Hâr□e□ti (M rgineni commune), B neasa ( Bozieni commune).

Torrents valleys in the vicinity of the villages are susceptible to waste disposal such as Bro teni, B hni oara (Bahna commune), Nistria (Boghicea commune), Avere ti (Ion Creang commune) etc. In other localities the streams are often exposed to uncontrolled waste disposal where waste collection services are rudimentary or missing (as shown in fig.2), but performing a quantitative analysis can be achieved only under certain conditions listed above.



Fig. 1. Waste dumping in small rivers – field observations 2009-2011

## CONCLUSION

The paper propose a method which is intended to evaluate the impact of illegal dumping in small rivers inside the built-up areas of villages from extra-Carpathian region of Neamt County. Determining the estimated amounts of waste disposed into a particular stream by a village can not be calculated unless the geographical conditions permit.

The sites of human settlements are often crossed by several small rivers which at any time may be affected by waste disposal, especially in case of an absent or inefficient waste collection system. Uncontrolled waste disposal is achieved in a dispersed way in villages located on the subcarpathian hills or Moldavian Plateau from Neamt county.

The small rivers are an alternative option for illegal dumping besides the improper dumpsites in the vicinity of households.

## REFERENCES

1. Apostol, L. and F.C. Mihai. (2012). Rural waste management: challenges and issues in Romania. *Present Environment and Sustainable Development*. 6 (2):105-114
2. Bertrand, J.R. and F. Laurent (2003). *De la décharge à la déchetterie: Questions de géographie des déchets*. Rennes, Presses universitaires de Rennes
3. Chen, C.C. (2010). Spatial inequality in municipal solid waste disposal across regions in developing countries. *Int. J. Environ. Sci.Tech*. 7 (3) :447-456.
4. Davies, A. (2008). *The Geographies of Garbage Governance: Interventions, Interactions and Outcomes*. Aldershot: Ashgate
5. Ichinose, D. and M. Yamamoto (2011). On the relationship between the provision of waste management service and illegal dumping. *Resource and Energy Economics*, 33: 79–93
6. Karak, T., R.M. Bhagat and P. Bhattacharyya (2012). Municipal Solid Waste Generation, Composition, and Management: The World Scenario. *Critical Reviews in Environmental Science and Technology*. 42 (15):1509-1630
7. Le Dorlot, E. (2004). *Les déchets ménagers: pour une recherche interdisciplinaire*. *Strates*. 11:1-10
8. Mazzanti, M. and R. Zoboli (2008) Waste generation, waste disposal and policy effectiveness Evidence on decoupling from the European Union, *Resources, Conservation and Recycling*, 52:1221–1234
9. Mihai, F.C. (2013). Quantitative assessment of household waste disposed in floodplains of rivers from extra-Carpathian region of Neam County, Romania. 13<sup>th</sup> International Multidisciplinary Scientific GeoConference on Ecology, Economics, Education And Legislation, SGEM 2013, Conference Proceedings, vol. 1:781-788
10. Mihai, F.C., A. Ursu, P. Ichim and D.A, Chelaru (2013). Determining rural areas vulnerable to illegal dumping using GIS techniques. Case study: Neam County, Romania. 13<sup>th</sup> International Multidisciplinary Scientific GeoConference on Ecology, Economics, Education And Legislation, SGEM 2013, Conference Proceedings vol.1 : 275-282
11. Mihai, F.C. and A. L m anu (2013). Spatial analysis of dumpsites volumes from rural territory Case study: Neamt County, Romania. *Forum Geografic*, 12 (1): 59-60
12. Mihai, F.C. (2012). Population access to waste collection services: urban vs rural areas in Romania, *Bulletin UASVM Agriculture* 69 (2): 464-466
13. Mihai, F.C. (2012). Improper Household Waste Disposal in Rural Territory. Case Study: Neam County, Romania. *Bulletin USAMV Agriculture* 69 (2): 15-20.
14. Mihai, F.C. (2012). Geography of waste as a new approach in waste management study. *Lucr. Seminarului Geografic “Dimitrie Cantemir”* 33: 39-46
15. Mihai, F.C, L. Apostol, A. Ursu and P. Ichim (2012). Vulnerability of mountain rivers to waste dumping from Neam County, Romania. *Geographia Napocensis* 6 (2):51-59
16. Mihai, F.C., L. Apostol, A.A. Ghiurc , A. L m anu and A. B nic , (2012). Geographical distribution of rural dumpsites in North-East Region from Romania, 12<sup>th</sup> International Multidisciplinary Scientific GeoConference SGEM 2012, Conference Proceedings, vol 5 : 447-452, (DOI: 10.5593/sgem2012/s20.v5060)
17. Mihai, F.C. and L. Apostol (2012). Disparities in municipal waste management across EU-27. A geographical approach. *Present Environment and Sustainable Development*. 6 (1): 169-180
18. Mihai, F.C. and L. Apostol (2012). Development of waste collection services on rural territory from Neam County, *Analele Universit.ii Oradea. Fascicula: Protec ia Mediului*. 18 (1): 370-375
19. Rotich K.H., Y. Zhao and J. Dong (2006). Municipal solid waste management challenges in developing countries – Kenyan case study. *Waste Management* 26: 92–100