



**HAL**  
open science

## New wave generation

Matthieu J. Mercier, Denis Martinand, Manikandan Mathur, Louis Gostiaux,  
Thomas Peacock, Thierry Dauxois

► **To cite this version:**

Matthieu J. Mercier, Denis Martinand, Manikandan Mathur, Louis Gostiaux, Thomas Peacock, et al..  
New wave generation. *Journal of Fluid Mechanics*, 2010, 657, pp.308. 10.1017/S0022112010002454 .  
hal-01139500

**HAL Id: hal-01139500**

**<https://hal.science/hal-01139500>**

Submitted on 5 Apr 2015

**HAL** is a multi-disciplinary open access archive for the deposit and dissemination of scientific research documents, whether they are published or not. The documents may come from teaching and research institutions in France or abroad, or from public or private research centers.

L'archive ouverte pluridisciplinaire **HAL**, est destinée au dépôt et à la diffusion de documents scientifiques de niveau recherche, publiés ou non, émanant des établissements d'enseignement et de recherche français ou étrangers, des laboratoires publics ou privés.

# New wave generation

**MATTHIEU J. MERCIER<sup>(1)</sup>, DENIS MARTINAND<sup>(2)</sup>,  
MANIKANDAN MATHUR<sup>(3)</sup>, LOUIS GOSTIAUX<sup>(4)</sup>,  
THOMAS PEACOCK<sup>(3)</sup> AND THIERRY DAUXOIS<sup>(1)</sup>**

<sup>(1)</sup> Université de Lyon, Laboratoire de Physique de l'École Normale Supérieure de Lyon,  
CNRS, France

<sup>(2)</sup> Laboratoire M2P2, UMR 6181 CNRS-Universités Aix-Marseille, France

<sup>(3)</sup> Department of Mechanical Engineering, MIT, Cambridge, MA 01239 USA

<sup>(4)</sup> Laboratoire des Écoulements Géophysiques et Industriels (LEGI), CNRS, Grenoble, France.

(Received 7 April 2015)

We present the results of a combined experimental and numerical study of the generation of internal waves using the novel internal wave generator design of Gostiaux *et al.* (2007). This mechanism, which involves a tunable source comprised of oscillating plates, has so far been used for a few fundamental studies of internal waves, but its full potential has yet to be realized. Our studies reveal that this approach is capable of producing a wide variety of two-dimensional wave fields, including plane waves, wave beams and discrete vertical modes in finite-depth stratifications. The effects of discretization by a finite number of plates, forcing amplitude and angle of propagation are investigated, and it is found that the method is remarkably efficient at generating a complete wave field despite forcing only one velocity component in a controllable manner. We furthermore find that the nature of the radiated wave field is well predicted using Fourier transforms of the spatial structure of the wave generator.

---

## 1. Introduction

The study of internal waves continues to generate great interest due to the evolving appreciation of their role in many geophysical systems. In the ocean, internal waves play an important role in dissipating barotropic tidal energy (see Garrett & Kunze 2007, for a review), whereas atmospheric internal waves are an important means of momentum transport (Alexander, Richter & Sutherland 2006). In both the ocean and the atmosphere, internal wave activity also impacts modern day technology (Osborne, Burch & Scarlet 1978). Many unanswered questions remain, however, particularly regarding the fate of internal waves. For example: How much mixing do internal waves generate in the ocean, and via what processes? And at what altitudes do atmospheric internal waves break and deposit their momentum? The ability to reliably model internal wave dynamics is key to tackling important questions such as these.

Internal waves come in a wide variety of forms. The simplest, a plane wave, is the basis of many theoretical studies that provide fundamental insight (see Thorpe 1987, 1998; Dauxois & Young 1999, for instance), especially as any linear wave structure can be decomposed into independent plane waves via Fourier transforms. While plane wave solutions are the focus of many theoretical studies, laboratory experiments and field observations reveal that internal waves generated by a localized source, such as the tidal flow past an ocean ridge (Bell 1975; Martin, Rudnick & Pinkel 2006) or deep tropical

convection in the atmosphere (Walterscheid, Schubert & Brinkman 2001), produce coherent wave beams that radiate away from the generation site. In vertically-finite domains, such as the ocean, the internal wave field can be conveniently described using vertical modes, i.e. horizontally propagating and vertically standing waves, whose spatial form is dictated by the vertical stratification, as discussed in Echeverri *et al.* (2009). Finally, localized solitary wave structures are also ubiquitous (New & Da Silva 2002).

Investigation of these different internal wave forms in laboratory experiments has played a key role in internal wave research, starting with the pioneering work of Mowbray & Rarity (1967) on the wave beams generated by an oscillating cylinder. Since then, internal waves have been generated using a variety of means. Delisi & Orlanski (1975) performed an experimental study of the reflection of nominally plane waves, produced by a paddle mechanism, from a density jump. A similar paddle mechanism was used by Ivey, Winters & De Silva (2000) to study the dissipation caused by internal wave breaking at a sloping boundary. Maas *et al.* (1997) used vertical oscillations of a tank filled with salt-stratified water to parametrically excite internal waves, which eventually focused onto internal wave attractors in the tank. With the ocean in mind, Gostiaux & Dauxois (2007) and Echeverri *et al.* (2009) produced internal waves by side-to-side oscillation of topography.

The aforementioned experimental methods of internal wave generation have three inherent shortcomings. Firstly, they produce wave fields that are invariant in one horizontal direction, and thus nominally two-dimensional. In this paper, we too restrict ourselves to the study of such situations, using  $z$  to refer to the vertical direction, antiparallel to the gravity field  $\mathbf{g} = -g\mathbf{e}_z$ , and  $x$  to the horizontal direction; the possibility of generating three-dimensional wave fields using the novel generator is raised at the end of the paper. The second shortcoming is that, with the exception of towed topography (Baines & Hoinka 1985; Aguilar & Sutherland 2006), pre-existing methods radiate waves in multiple directions rather than in a single direction. This is due to the dispersion relation for internal gravity waves,

$$\omega^2 = N^2 \sin^2 \theta, \quad (1.1)$$

which relates the forcing frequency,  $\omega$ , to the local angle of energy propagation with respect to the horizontal,  $\theta$ , via the Brunt-Väisälä frequency,  $N = \sqrt{-g\partial_z\rho/\rho}$ , where  $\rho$  is the background fluid density. Since waves propagating at angles  $\pm\theta$  and  $\pi \pm \theta$  all satisfy (1.1) for a given frequency ratio  $\omega/N$ , a two-dimensional localized source, such as a vertically oscillating cylinder, generates internal waves propagating in four different directions. Propagation in two of the four directions can be suppressed by either providing oscillations along only one of the directions of propagation (i.e.  $\theta$  and  $\pi + \theta$ ) (Gavrilov & Ermanyuk 1996; Ermanyuk & Gavrilov 2008) or by using a paddle system at a boundary (Delisi & Orlanski 1975). These arrangements nevertheless still produce an undesirable second set of waves that must somehow be dealt with in an experiment. The third, and perhaps the most significant, shortcoming is that all pre-existing methods provide very limited, if any, control of the spatial structure of an internal wave field.

A major advance in internal wave generation recently occurred with the design of a novel type of internal wave generator (Gostiaux *et al.* 2007). This design uses a series of stacked, offset plates on a camshaft to simultaneously shape the spatial structure of an experimental internal wave field and enforce wave propagation in a single direction, as illustrated in figure 1. The maximum horizontal displacement of each plate is set by the eccentricity of the corresponding cam, and the spatio-temporal evolution is defined by the phase progression from one cam to another and the rotation speed of the camshaft. So far, this novel configuration has been used to study plane wave reflection from sloping

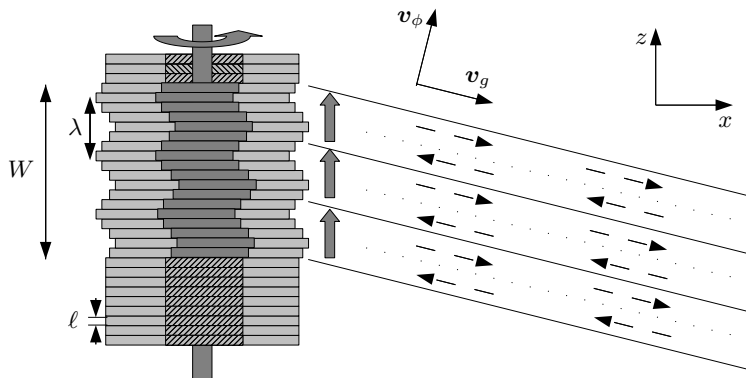


FIGURE 1. A schematic showing the basic configuration of a novel internal wave generator. Plates are vertically stacked on an eccentric camshaft. See text in section 2 for the definitions of the different lengths  $W$ ,  $\ell$  and  $\lambda$ . The circular arrow at the top of the generator illustrates the direction of rotation of the camshaft, the thick vertical arrows show the corresponding motion of the wave form of the plates, and the dashed oblique arrows indicate the resulting local velocity field.  $\mathbf{v}_\phi$  and  $\mathbf{v}_g$  indicate the direction of phase and group velocity, respectively.

boundaries (Gostiaux 2006), diffraction through a slit (Mercier *et al.* 2008) and wave beam propagation through nonuniform stratifications (Mathur & Peacock 2009). Despite these early successes, however, there has been no dedicated study of the ability of this arrangement to generate qualitatively different forms of internal wave fields, and several important questions remain. For example, how does a stratified fluid that supports two-dimensional waves respond to controlled forcing in only one direction (i.e. parallel to the motion of the plates)?

In this paper, we present the results of a comprehensive study of two-dimensional wave fields produced by different configurations of novel internal wave generators, and reveal that this approach can accurately produce plane waves, wave beams and discrete vertical modes. The results of experiments are compared with predictions based on the Fourier transforms of the spatial structure of the wave generator, which proves to be a very useful and simple tool for predicting wave fields, and numerical simulations, which allow investigation of the boundary conditions imposed by the generator. The material is organized as follows. Section 2 presents the experimental and numerical methods used throughout the study. The generation of plane waves is addressed in § 3, followed by the generation of self-similar wave beams and vertical modes in § 4 and § 5, respectively. Our conclusions, and suggestions for future applications of the generator, are presented in § 6.

## 2. Methods

### 2.1. Experiments

Throughout this paper, we consider the case of wave fields excited by a vertically standing generator with horizontally moving plates of thickness  $\ell$ , as depicted in figure 1. This scenario, which is possible because the direction of wave propagation is set by the dispersion relation (1.1), has two major advantages over the other possibility of a generator tilted in the direction of wave propagation (Gostiaux *et al.* 2007; Mathur & Peacock 2009). First, it is far more convenient because it requires no mechanical components to orient the camshaft axis and no change of orientation for different propagation angles. Second, unwanted wave beams that are inevitably produced by free corners within the

---

Generator	Height	Width	Plate thick.	Plate gap	Max. eccentricity	Num. of plates
Lyon	390.0	140.0	6.0	0.7	10.0	60
MIT	534.0	300.0	6.3	0.225	35.0	82

---

TABLE 1. Details of the wave generators at ENS de Lyon and MIT. Dimensions are in mm.

body of a stratified fluid are eliminated because the generator extends over the entire working height of the fluid.

Two different laboratory experimental facilities, both using the double-bucket method (Oster 1965) to create salt/density stratifications, were used. The first, at ENS de Lyon, utilized a 0.8 m long, 0.170 m wide and 0.425 m deep wave tank. The wave generator, whose characteristics are listed in table 1, was positioned at one end of the tank. On each side of the wave generator there was a 0.015 m gap between the moving plates and the side wall of the wave tank. Visualizations and quantitative measurements of the density-gradient perturbation field were performed using the Synthetic Schlieren technique (Dalziel *et al.* 2000). The CIV algorithm of Fincham & Delerce (2000) was used to compute the cross-correlation between the real-time and the  $t = 0$  background images. Blocksom filter matting was used to effectively damp end wall reflections of internal waves. The ENS Lyon setup was used to run experimental studies of the classical Thomas–Stevenson wave beam profile (Thomas & Stevenson 1972), detailed in § 4.

The second system, at MIT, utilized a 5.5 m long, 0.5 m wide and 0.6 m deep wave tank. A partition divided almost the entire length of the tank into 0.35 m and 0.15 m wide sections, the experiments being performed in the wider section. The wave generator, whose characteristics are given in table 1, was mounted in the 0.35 m wide section of the tank with a gap of 0.025 m between the moving plates and either side wall. Parabolic end walls at the ends of the wave tank reflected the wave field produced by the generator into the 0.15 m wide section of the tank, where it was dissipated by Blocksom filter matting. Visualizations and quantitative measurements of the velocity field in the vertical midplane of the generator were obtained using a LaVision Particle Image Velocimetry (PIV) system. This facility was used for studies of plane waves and vertical modes, detailed in § 3 and § 5, respectively.

Examples of the amplitude and phase arrangements of the plates for the experiments discussed in this paper are presented in figure 2. We use the following terminology:  $M$  is the number of plates per period used to represent a periodic wave form of vertical wavelength  $\lambda$ ,  $W$  is the total height of the active region of the generator with nonzero forcing amplitude,  $A(z)$  is the eccentricity of a cam located at height  $z$ , and  $\phi(z)$  is the phase of a cam set by the initial rotational orientation relative to the mid-depth cam ( $\phi = 0$ ). The actual profile of the generator is given by  $\text{Re} \{ A(z)e^{i\phi(z)} \}$ , where  $\text{Re}$  stands for the real part. For a plane wave,  $A(z)$  is constant and  $\phi(z)$  varies linearly over the active region of the generator. For the Thomas & Stevenson profile there is a nontrivial spatial variation in both  $A(z)$  and  $\phi(z)$  over the active region, and elsewhere  $A(z)$  is zero. Finally, for a mode-1 wave field,  $A(z)$  varies as the magnitude of a cosine over the entire fluid depth, while  $\phi(z)$  jumps by  $\pi$  at mid-depth.

## 2.2. Numerics

Complementary two-dimensional numerical simulations, in which excitation by the generator was modeled by imposing spatio-temporal variations of the velocity and buoyancy fields along one boundary of the numerical domain, were performed. The simulations,

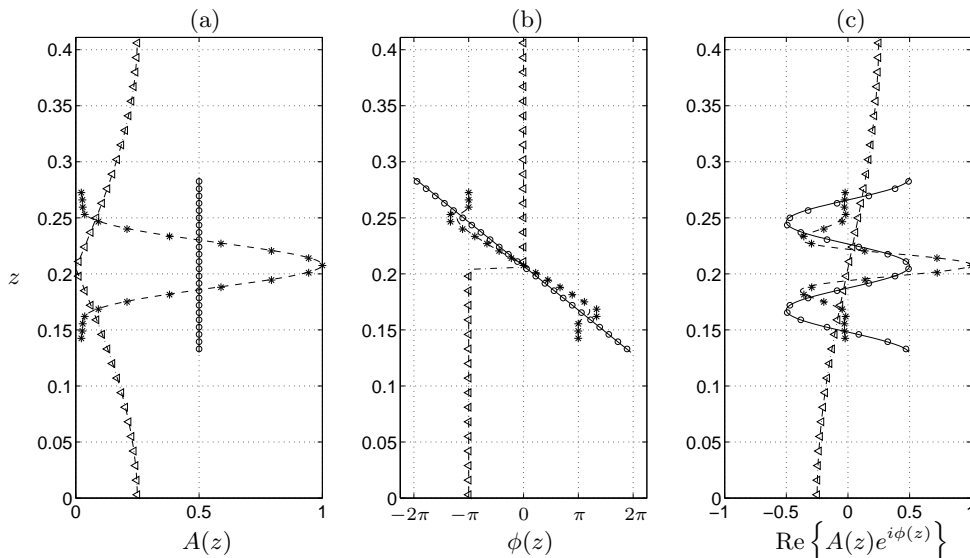


FIGURE 2. Examples of the (a) eccentricity  $A(z)$  in cm, (b) phase  $\phi(z)$  and (c) instantaneous position of the cams for different profiles used throughout the paper. These include: plane waves for  $M = 12$  and  $W = 2\lambda$  ( $\circ$ ), Thomas & Stevenson beam ( $*$ ) and a mode-1 internal tide ( $\triangleleft$ ). Thin lines drawn through the discrete points are the corresponding analytical forms being modeled.

which assumed a Newtonian fluid in the Boussinesq approximation, solved the incompressible continuity, Navier–Stokes and energy equations

$$\nabla \cdot \mathbf{v} = 0, \quad (2.1a)$$

$$\partial_t \mathbf{v} + (\nabla \times \mathbf{v}) \times \mathbf{v} = -\nabla q + b\mathbf{e}_z + \nu \nabla^2 \mathbf{v} \quad (2.1b)$$

and

$$\partial_t b + (\mathbf{v} \cdot \nabla) b = -N^2 \mathbf{v} \cdot \mathbf{e}_z + \kappa \nabla^2 b, \quad (2.1c)$$

where  $\mathbf{v} = (u, w)$  is the velocity field,  $v$  the corresponding velocity magnitude,  $p = q - v^2/2$  the pressure,  $b$  the buoyancy field, related to the density by  $\rho = \rho_0 (1 - g^{-1}N^2 z - g^{-1}b)$  where  $\rho_0$  is the density at  $z = 0$ ,  $\nu$  the kinematic viscosity and  $\kappa$  the diffusivity.

The code used was an extension of that developed for channel flow (Gilbert 1988), to which the integration of the energy equation and the possibility of spatially varying and time evolving boundary conditions on the plates were added, as already presented in Martinand *et al.* (2006) for thermal convection. The method proceeds as follows. A numerical solution in a rectangular domain  $[0, l_x] \times [0, l_z]$  is obtained by a tau-collocation pseudo-spectral method in space, using Fourier modes in the  $z$ -direction and Chebyshev polynomials in the confined  $x$ -direction. This method very precisely accounts for the dissipative terms. The nonlinear and diffusion terms are discretized in time by Adams–Bashforth and Crank–Nicolson schemes, respectively, resulting in second order accuracy in time. As the simulation focuses on the linear and weakly nonlinear dynamics, the de-aliasing of the nonlinear term in the spatial expansion of the solution is not of crucial importance and is omitted to decrease the computational cost. Owing to the assumption of a divergence-free flow, the influence matrix method, introduced in Kleiser & Schumann (1980, 1984), is used to evaluate the pressure and the velocity field; the pressure gradient in the Navier–Stokes equation then being discretized by an implicit Euler scheme. Finally, the buoyancy term is also discretized in time by an implicit Euler scheme, since the energy equation is solved before the Navier–Stokes equations.

Simulations were run by imposing forced boundary conditions on components of the velocity and buoyancy fields at  $x = 0$ ; no forcing was applied to the pressure, since its value on the boundaries is an outcome of the numerical method. The governing equations (2.1) were thus integrated together with Dirichlet boundary conditions

$$\mathbf{v}(0, z, t) = \mathbf{v}_f(z, t), \quad b(0, z, t) = b_f(z, t); \quad (2.2)$$

while

$$\mathbf{v}(l_x, z, t) = \mathbf{0}, \quad b(l_x, z, t) = 0, \quad (2.3)$$

were applied at  $x = l_x$ . We note that this numerical forcing is Eulerian in nature, whereas the corresponding experimental forcing is Lagrangian in spirit. The spectral method introduces periodic conditions in the  $z$ -direction, which have to be accounted for to avoid Gibbs oscillations. Therefore, the boundary conditions (2.2) were multiplied by a polynomial ‘‘hat’’ function  $H(z) = \left(1 - (2z/l_z - 1)^{30}\right)^6$ , vanishing at  $z = 0$  and  $z = l_z$ . The choice of the exponents in  $H(z)$  is qualitative, the aim being that the variation of the profile envelope be smooth compared to the spatial resolution, yet sharp enough to keep a well-defined width of forcing.

The boundary conditions (2.3) imply wave reflection, with the reflected waves eventually interfering with the forced waves. Thus, the numerical domain was made sufficiently large to establish the time-periodic forced wave field near the generation location long before reflections became an issue. For a typical simulation, the domain was  $l_x = 3.01$  m long and  $l_z = 1.505$  m high, and the number of grid points used was  $N_x = 1024$  and  $N_z = 512$ , giving a spatial vertical resolution of 2.9 mm that ensured at least two grid points per plate. Satisfactory spectral convergence was confirmed for this spatial resolution and the time step was set to ensure stability of the numerical scheme.

### 2.3. Analysis

A detailed study of the impact of sidewall boundary conditions on the generation of shear waves was performed by McEwan & Baines (1974). Here, we take a simpler approach and show that a useful tool for investigating both theoretical and experimental internal wave fields produced by the novel generator is Fourier analysis. This allows one to decompose internal wave fields into constituent plane waves, and readily make predictions about the radiated wave field.

For an unconfined, inviscid, two-dimensional system, any physical field variable associated with a periodic internal wave field of frequency  $\omega$  can be described by its Fourier spectrum (Tabaei & Akylas 2003; Tabaei, Akylas & Lamb 2005), i.e.

$$\psi(x, z, t) = \frac{e^{-i\omega t}}{2\pi} \int_{-\infty}^{+\infty} \int_{-\infty}^{+\infty} \tilde{Q}_\psi(k_x, k_z) e^{i(k_x x + k_z z)} \delta((k_x^2 + k_z^2)\omega^2 - N^2 k_x^2) dk_z dk_x, \quad (2.4)$$

where  $\psi(x, z, t)$  represents a field variable (e.g.  $b$ ,  $u$ ) and the Dirac  $\delta$ -function ensures the dispersion relation (1.1) is satisfied by the plane waves components. Propagating waves in a single direction, say towards positive  $x$ -component and negative  $z$ -component for the energy propagation, require

$$\tilde{Q}_\psi(k_x, k_z) = 0 \quad \forall k_x \leq 0 \quad \& \quad \forall k_z \leq 0, \quad (2.5)$$

as noted by Mercier *et al.* (2008).

At a fixed horizontal location  $x_0$ , the values of  $\psi(x_0, z, t)$  for all the field variables can be considered as boundary conditions that force the propagating wave field  $\psi(x, z, t)$ .

Knowing the Fourier transform of the boundary forcing,

$$Q_\psi(x_0, k_z) = \frac{e^{i\omega t}}{\sqrt{2\pi}} \int_{-\infty}^{+\infty} \psi(x_0, z, t) e^{-ik_z z} dz, \quad (2.6)$$

leads to complete description of the radiated wave field for  $x > x_0$ :

$$\psi(x, z, t) = \frac{e^{-i\omega t}}{2\pi} \int_0^{+\infty} \int_{-\infty}^{+\infty} Q_\psi(x_0, k_z) e^{i(k_x x + k_z z)} \delta((k_x^2 + k_z^2)\omega^2 - N^2 k_x^2) dk_z dk_x, \quad (2.7)$$

assuming that only right-propagating waves (i.e.  $k_x \geq 0$ ) are possible.

In practice, the novel wave generator we consider forces only the horizontal velocity field in a controlled manner, i.e.

$$\psi(0, z, t) = u(0, z, t) = \text{Re} \{ U(z) e^{-i\omega t} \}. \quad (2.8)$$

As such, we expect the Fourier transform of this boundary condition to act only as a guide for the nature of the radiated wave field, since it is not clear how the fluid will respond to forcing of a single field variable. Throughout the paper, we perform the Fourier transform along a specific direction using the Fast Fourier Transform algorithm. To compare spectra from theoretical, numerical and experimental profiles with the same resolution, a cubic interpolation (in space) of the experimental wave field is used if needed.

Unless otherwise stated, the experimental and numerical results presented are filtered in time at the forcing frequency  $\omega$ . The aim is to consider harmonic (in time) internal waves for which we can define the Fourier decomposition in (2.4), and to improve the signal-to-noise ratio, which lies in the range  $10^2 - 10^1$ , with the best results for shallow beam angles and small amplitude forcing. The time window  $\Delta t$  used for the filtering is such that  $\omega\Delta t/2\pi \geq 9$  for  $A_0 = 0.005$  m and  $\omega\Delta t/2\pi \geq 4$  for  $A_0 = 0.035$  m (where  $A_0$  is the amplitude of motion of the plates defined in 3.1), ensuring sufficient resolution in Fourier space for selective filtering. The recording was initiated at time  $t_0$  after the start-up of the generator such that  $Nt_0/2\pi \simeq 30 \gg 1$ , ensuring no transients remained. (Voisin 2003).

### 3. Plane waves

Since many theoretical results for internal waves are obtained for plane waves (e.g. Thorpe 1987, 1998; Dauxois & Young 1999), the ability to generate a good approximation of a plane wave in a laboratory setting is important to enable corresponding experimental investigations. In order to generate a nominally plane wave, however, one must consider the impact of the different physical constraints of the wave generator, which include: the controlled forcing of only one velocity component by the moving plates, the finite spatial extent of forcing, the discretization of forcing by a finite number of plates, the amplitude of forcing, and the direction of wave propagation with respect to the camshaft axis of the generator. In this section, we present the results of a systematic study of the consequences of these constraints; a summary of the experiments is presented in table 2.

#### 3.1. Analysis

Two-dimensional, planar internal waves take the form  $\psi(x, z, t) = \text{Re} \{ \psi_0 e^{i(k_x x + k_z z - i\omega t)} \}$ , where  $\mathbf{k} = (k_x, k_z)$  is the wave vector and  $\psi(x, z, t)$  represents a field variable. Being of infinite extent is an idealization that is never realizable in an experiment. To investigate the consequences of an internal wave generator being of finite extent, the horizontal velocity boundary conditions used to produce a downward, right-propagating, nominally



plane wave can be written as:

$$u(0, z, t) = \text{Re} \left\{ [\Theta(z + W/2) - \Theta(z - W/2)] A_0 \omega e^{i(-\omega t + k_e z)} \right\}, \quad (3.1)$$

where  $k_e > 0$  is the desired vertical wave number,  $\lambda_e = 2\pi/k_e$  the corresponding vertical wavelength,  $-W/2 \leq z \leq W/2$  the vertical domain over which forcing is applied,  $A_0$  the amplitude of motion of the plates, and  $\Theta$  the Heaviside function. The spatial Fourier transform of (3.1) is:

$$Q_u(0, k_z) = A_0 \omega \frac{W}{\sqrt{2\pi}} \text{sinc} \left( \frac{(k_z - k_e)W}{2} \right), \quad (3.2)$$

with  $\text{sinc}(x) = \sin x/x$  the sine cardinal function. In the limit  $W \rightarrow \infty$ , Eq. (3.2) approaches a delta function, which is the Fourier transform of a plane wave. Owing to the finite value of  $W$ , however,  $Q_u(0, k_z)$  does not vanish for negative values of  $k_z$ , suggesting that (3.1) will also excite upward propagating plane waves. Following the convention usual in optics that  $Q_u(0, k_z)$  is negligible for  $|k_z - k_e|W/2 \geq \pi$ , if  $k_e \gg 2\pi/W$  then (2.5) is reasonably satisfied.

Another consideration is that the forcing provided by the wave generator is not spatially continuous, but discretized by  $N_p$  oscillating plates of width  $\ell$ . Accounting for this, the boundary forcing can be written as:

$$u(0, z, t) = \text{Re} \left\{ \sum_{j=0}^{N_p-1} [\Theta(z - z_j) - \Theta(z - z_j + \ell)] A(z_j) e^{i(k_e z_j + k_e \ell/2 - \omega t)} \right\}, \quad (3.3)$$

where  $z_j = j\ell - W/2$  and  $N_p\ell = W$ . The Fourier transform of (3.3) for the specific case of constant amplitudes  $A(z_j) = A_0\omega$ ,  $\forall j \in \{0, \dots, N_p - 1\}$ , reduces to

$$Q_u(0, k_z) = A_0 \omega \frac{\ell}{\sqrt{2\pi}} \text{sinc} \left( \frac{k_z \ell}{2} \right) \frac{\sin \left( \frac{(k_z - k_e)W}{2} \right)}{\sin \left( \frac{(k_z - k_e)\ell}{2} \right)}, \quad (3.4)$$

a classical result often encountered for diffraction gratings. Consequently, the magnitudes of  $W$  and  $\ell$  in comparison to the desired vertical wavelength  $\lambda_e = 2\pi/k_e$  characterize the spread of the Fourier spectrum and the potential for excitation of upward propagating waves.

In the following sections, we quantify the downward emission of waves using the parameter  $\beta_d$ , defined as:

$$\beta_d = \frac{\int_0^{+\infty} |Q_u(x_0, k_z)|^2 dk_z}{\int_{-\infty}^{+\infty} |Q_u(x_0, k_z)|^2 dk_z}, \quad (3.5)$$

which is essentially the ratio of the total kinetic energy of the downward-propagating waves to the total kinetic energy of the radiated wave field.

### 3.2. Configuration

The MIT facility was used for these plane wave experiments (see table 1). A variety of different configurations were tested and these are summarized in table 2. The fluid depth was  $H = 0.56 \pm 0.015$  m and the background stratification was  $N = 0.85$  rad s<sup>-1</sup> for all experiments. An example configuration of the cams (amplitude and phase evolution) is

	Expt.	Experiment/Simulation	Forcing	$M$	$W/\lambda_e$	$A_0$ (mm)	$\theta$ (deg.)
Common case	1	exp./sim.	partial	12	3	5.0	15
Forcing	2	sim.	complete	12	3	5.0	45
Angle	3	exp./sim.	partial	12	3	5.0	30
	4	exp./sim.	partial	12	3	5.0	45
	5	exp./sim.	partial	12	3	5.0	60
	6	sim.	partial	12	3	5.0	75
Width	7	exp./sim.	partial	12	2	5.0	15
	8	exp./sim.	partial	12	1	5.0	15
	9	exp./sim.	partial	12	2	5.0	45
	10	exp./sim.	partial	12	1	5.0	45
Discretization	11	sim.	partial	$\infty$	3	5.0	15
	12	exp./sim.	partial	4	3	5.0	15
Amplitude	13	exp./sim.	partial	12	3	35.0	15
	14	exp.	partial	12	3	35.0	30
	15	exp.	partial	12	3	35.0	45

TABLE 2. Summary of experiments and numerical simulations.  $M$  is the number of plates used for one wavelength,  $W/\lambda_e$  is the spatial extent of forcing expressed in terms of the dominant wavelength,  $A_0$  is the eccentricity of the cams, and  $\theta$  is the energy propagation angle. For complete forcing,  $u$ ,  $w$  and  $b$  were forced at the boundary.

presented in figure 2. Plane waves were produced by configuring the  $N_p$  plates of the wave generator with an oscillation amplitude  $A_0 = 0.005$  m, with the exception of experiments 13 to 15 for which  $A_0 = 0.035$  m. Results were obtained for different forcing frequencies corresponding to propagating angles of 15, 30, 45 and 60°. Visualization of the wave field was performed using PIV, for which it was possible to observe the wave field in a 40 cm-wide horizontal domain over the entire depth of the tank, save for a 1 cm loss near the top and bottom boundaries due to unavoidable laser reflections. The corresponding numerical simulations were configured accordingly.

### 3.3. Results

#### 3.3.1. Forcing

The consequences of forcing only a single component of the velocity field, which we call *partial forcing*, in comparison to forcing both the velocity field components and the buoyancy field (assuming they are related by the inviscid linear wave equation), which we call *complete forcing*, were investigated first using the numerical simulations. Here, we present the results of simulations performed using a sinusoidal boundary wave form with  $W = 3\lambda_e$ ,  $M = 12$  and  $\lambda_e = 78.8$  mm (experiments 2 and 4 of table 2). The magnitude and frequency of the boundary condition for horizontal velocity were  $A_0 = 5.0$  mm and  $\omega = 0.601$  rad s<sup>-1</sup>, the latter giving  $\theta = 45^\circ$ .

Figures 3(a) and (b) present snapshots of the horizontal velocity fields  $u$  produced by partial and complete boundary forcing, respectively, and there is excellent qualitative agreement between the two. More quantitative comparisons are provided in figure 3(c), which presents data along the vertical cuts  $\mathcal{C}$  indicated in figures 3(a) and (b), located

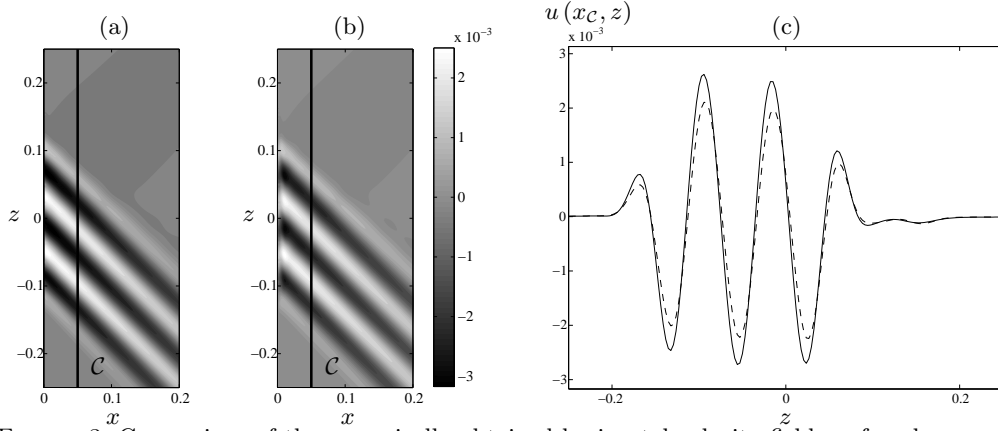


FIGURE 3. Comparison of the numerically obtained horizontal velocity field,  $u$ , for plane wave beams forced by (a) complete and (b) partial forcing (experiments 2 and 4 in table 2). (c) Horizontal velocity along the cut  $\mathcal{C}$  in (a) and (b), located at  $x_{\mathcal{C}} = 0.05$  m for complete (—) and partial (---) forcing. All lengths are in m and all velocities in  $\text{m s}^{-1}$ .

at  $x_{\mathcal{C}} = 0.05$  m; this location was chosen because it is close enough to the generator that viscous damping has only an order 1% effect on the wave field (based on the linear viscous theory for plane waves by Lighthill (1978)), yet is sufficiently far from the generator to allow the wave field to adapt to the boundary forcing. The cross beam profiles in figure 3(c) show the amplitude of  $u$  is roughly 20% lower for the case of partial forcing compared to complete forcing, but otherwise their forms closely match. Spectral information reveals no other discernable difference between the two, and both cases give  $\beta_d > 0.99$ , compared to the theoretical prediction of  $\beta_d = 0.97$ , revealing that almost all the energy is being emitted downward. Qualitatively and quantitatively similar results to those presented in figures 3(c) and (d) were obtained for different physical quantities (e.g.  $w$  and  $b$ ) of the wave fields, and for the other configurations of the generator listed in table 2.

### 3.3.2. Angle of emission

As one might expect, the quality of the wave field was best for shallower propagation angles, for which the horizontal velocity is a more defining quantity, and degraded for steep propagation angles, where  $w$  becomes the dominant velocity component. This is demonstrated in a qualitative manner by figures 4(a)-(d), which present snapshots of the experimental horizontal velocity fields for  $\theta = 15, 30, 45$  and  $60^\circ$ , corresponding to experiments 1, 3, 4 and 5 in table 2, respectively. Although the forcing velocity  $u = A_0\omega$  is strongest for  $\theta = 60^\circ$ , the wave field resulting from this partial forcing is not as strong and coherent as those at lesser angles.

Another demonstration of the consequences of partial forcing is given in figure 5, which presents the efficiency of the wave generator as a function of the forcing frequency for experiments and numerics. The efficiency is defined as the magnitude of the horizontal velocity component  $u$  (figure 5(a)), or the velocity in the direction of wave propagation  $u'$  (figure 5(b)), averaged over the central 0.1 m of the cut  $\mathcal{C}$  across the wave field, compared to the forced horizontal velocity  $A_0\omega$ . For complete forcing, one expects the ratio  $u/A_0\omega$  to be one, whereas a smaller value indicates a less efficient mechanism. The results show that both  $u/A_0\omega$  and  $u'/A_0\omega$  decrease with increasing  $\omega/N$ . A simple physical argument for the decay of the response with the propagation angle could be that the generator provides an initial amount of kinetic energy that is redistributed by the flow into both horizontal and vertical motions. If all the energy is appropriately distributed, we expect

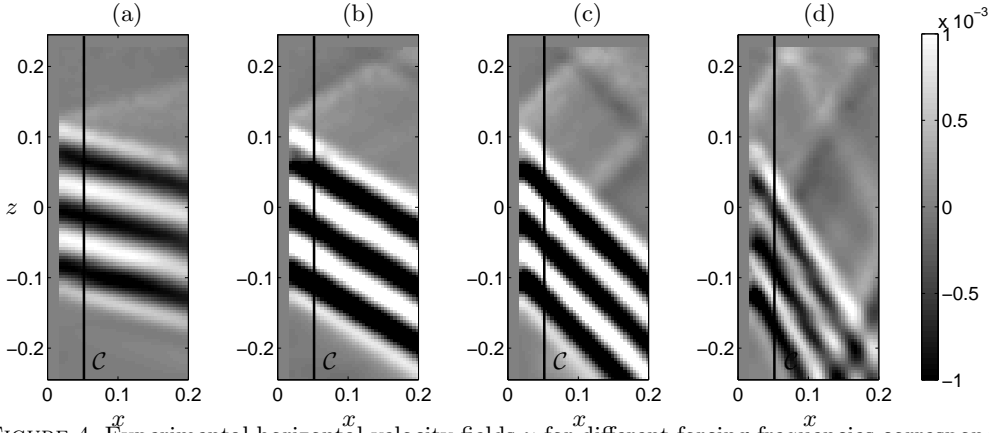


FIGURE 4. Experimental horizontal velocity fields  $u$  for different forcing frequencies corresponding to angles of propagation (a)  $\theta = 15^\circ$ , (b)  $30^\circ$ , (c)  $45^\circ$  and (d)  $60^\circ$ . These are experiments 1, 3, 4 and 5 in table 2, respectively. All lengths are in m and all velocities in  $\text{m s}^{-1}$ .

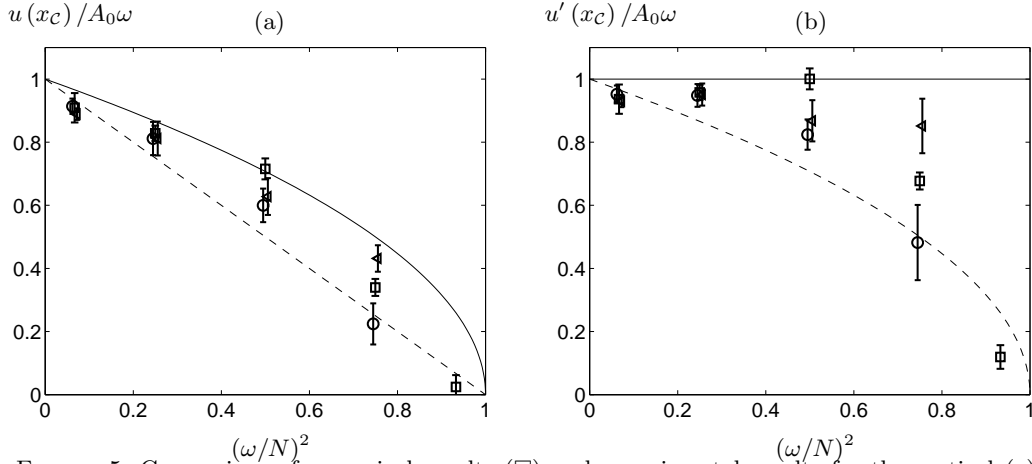


FIGURE 5. Comparison of numerical results ( $\square$ ) and experimental results for the vertical ( $\circ$ ) and tilted ( $\triangleleft$ ) wave generator for the mean amplitude and standard deviation of (a)  $u/A_0\omega$  and (b)  $u'/A_0\omega$ . Results are plotted as a function of  $(\omega/N)^2$  for different frequencies corresponding to  $\theta = 15, 30, 45, 60$  and  $75^\circ$  (numerics only). The solid lines correspond to  $u'/(A_0\omega) = 1$  and the dashed lines to  $u'/(A_0\omega) = \cos \theta$ .

$u' = A_0\omega$ , and thus  $u = A_0\omega \cos \theta = A_0\omega \sqrt{1 - (\omega/N)^2}$ , represented by solid lines in both panels of figure 5. Below  $(\omega/N)^2 = 0.5$  the experiments and numerics follow this trend quite closely, but then depart from it significantly for higher frequency ratios. Also plotted as dashed lines in figure 5 is the relation  $u' = A_0\omega \cos \theta$ , implying  $u'/A_0\omega = \sqrt{1 - \omega^2/N^2}$  and  $u/A_0\omega = 1 - \omega^2/N^2$ , which does a reasonable job of capturing the trend of the results, especially at higher frequency ratios. This relation implies that the energy associated with the motion of the plates along the direction of propagation is primarily responsible for setting the strength of the wave field.

Finally, we analyze the evolution the wave field with increasing angle by computing  $\beta_d$ . For these experiments, the Fourier analysis in section 3.1 predicts  $\beta_d = 0.97$ , independent of the angle of emission. Although the numerical values concur with this prediction, with  $\beta_d > 0.99$  for all angles, we obtain values of 0.99 for  $\theta = 15^\circ$ , 0.98 for  $\theta = 30^\circ$  and  $45^\circ$ , and 0.93 for  $\theta = 60^\circ$  for the experiments. One possible reason for this decrease

in efficiency is the finite-amplitude lateral displacement of the plates of the generator, which could partially block the propagation of steeper waves; this is not taken into account in the numerics. Another possible reason is that at higher frequency of forcing the Reynolds number for the oscillating plates is larger, increasing the likelihood of more complex dynamics near the oscillating plates and thereby weakening their coupling to wave generation. These issues are raised again in section 3.3.5.

Overall, the results in this section and the previous section reveal that partial (horizontal) forcing by a vertically standing generator works well for  $\theta \leq 45^\circ$ . This gives the user the freedom to perform experiments over a range of angles without having to re-orient the generator. For larger angles, however, it would seem prudent to use a generator with its perpendicular axis tilted toward the direction of propagation. This was confirmed by a series of experiments similar to cases 1 and 3 to 5 in table 2, but with the generator tilted at  $15^\circ$  to the vertical; these results are also included in figure 5. For angles smaller than  $45^\circ$ , there is almost no difference in the efficiency of the generator, but we found that the  $60^\circ$  wave field produced by the tilted generator was noticeably stronger and more coherent than that produced by the vertically-standing generator.

### 3.3.3. Finite extent

The Fourier analysis in section 3.1 predicts that a consequence of a generator inevitably being of finite vertical extent is the production of undesirable waves that propagate in the vertical direction opposite to the principal wave field. This can be seen in both the numerical and experimental wave fields in figures 3 and 4, which contain a weak, upward-propagating wave field in addition to the principal downward-propagating wave field. Experiments were therefore performed for  $W/\lambda_e = 1, 2$  and  $3$  to investigate how the strength of the undesirable wave field was influenced by the vertical restriction of the forcing, and to determine how well this was predicted by simple Fourier analysis. Except for varying  $W/\lambda_e$  and having  $\theta = 15^\circ$ , the configuration was the same as in the previous subsection. The experiments are listed as experiments 1, 7 and 8 in table 2.

A direct comparison of experimental and numerical horizontal velocity fields for  $W/\lambda_e = 3$  is presented in figure 6, demonstrating very good agreement between the two, providing confirmation that our numerical approach can reliably model the horizontal forcing provided by the plates. The profiles presented in figure 6(c), obtained at the vertical cuts indicated in figures 6(a) and 6(b), have only one small, but noticeable, difference: slightly higher peaks at either end of the experimental velocity profile. A similar level of agreement was obtained for the vertical velocity profile.

The normalized experimental spatial Fourier spectra  $Q_u(x_C, k_z)$  at  $x_C = 0.05$  m and the normalized theoretical spectra  $Q_u(0, k_z)$  are presented in figure 7. A standout feature of the results is that the theoretical Fourier transform does a remarkably good job of predicting the spectrum of the experimental wave field. For  $W/\lambda_e = 1$ , the spectrum is broadly centered around the expected vertical wavenumber  $k_e = 79.9 \text{ m}^{-1}$ , and this principal peak becomes increasingly sharp for  $W/\lambda_e = 2$  and  $3$ . This evolution is quantified by the half width  $\delta k$ , defined as the width of the principal spectral peak at half peak amplitude, the values of which are listed in table 3 for the three different configurations.

Another notable feature of the spectra is that strength of the upward propagating wavefield ( $k_z < 0$ ) significantly decreases with increasing  $W/\lambda_e$ . Computing the parameter  $\beta_d$  for experimental and numerical cases 1, 7 and 8 of table 2 quantifies this trend. As seen in table 3, 98% of the energy propagates in the desired direction for  $W/\lambda_e \geq 2$ . Furthermore, we computed  $\delta k/k_e$  and  $\beta_d$  for cases 4, 9 and 10 of table 2 too, and the results presented in table 3 show that the influence of the width is more significant than the influence of the angle of emission.

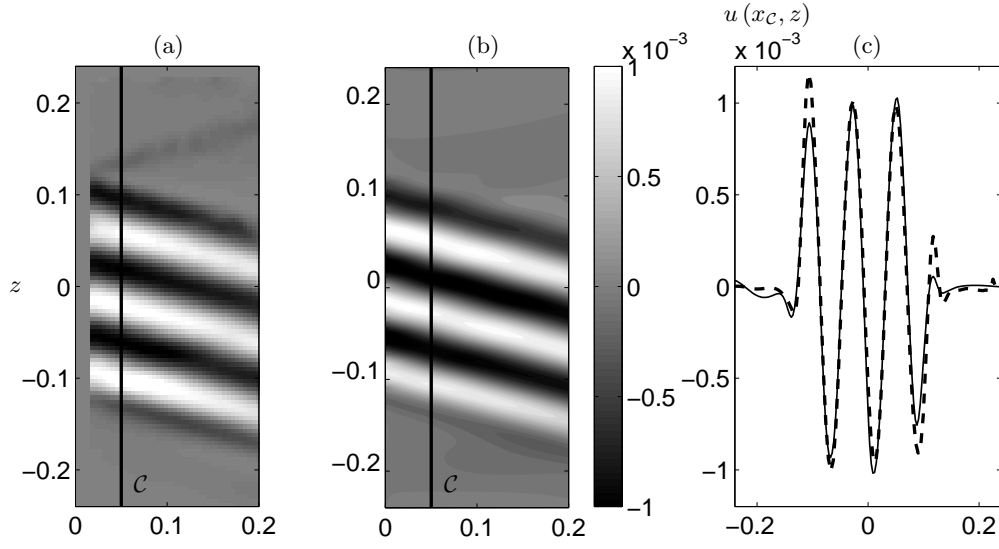


FIGURE 6. Horizontal velocity fields for (a) experiment and (b) simulation for experiment 1 in Table 2. (c) Vertical profiles along the cut  $C$  located at  $x_C = 0.05$  m for the experiment (---) and the simulation (—). All lengths are in m and all velocities in  $\text{m s}^{-1}$ .

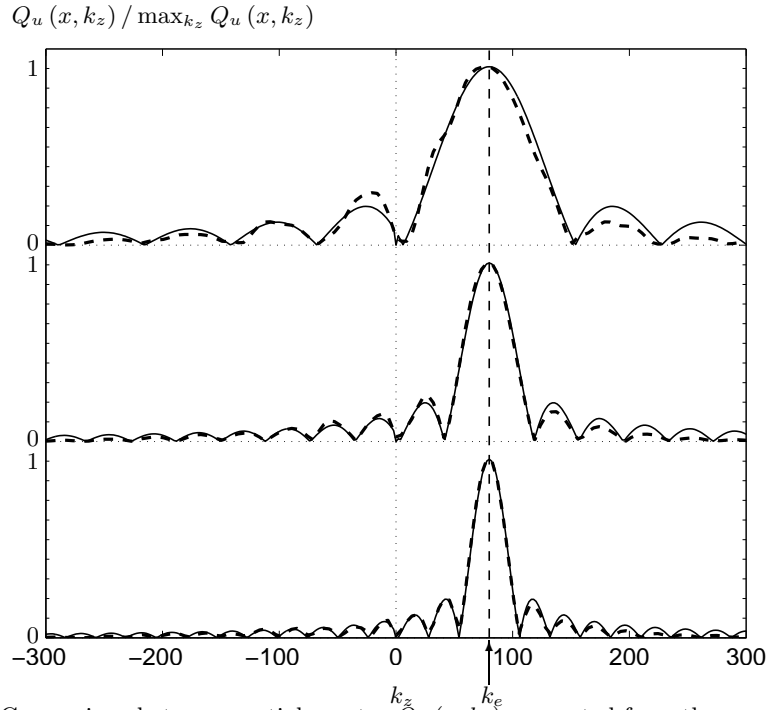


FIGURE 7. Comparison between spatial spectra  $\tilde{Q}_u(x, k_z)$  computed from the experiments (---) at station  $x_C = 0.05$  m and the theoretical expression (—) computed from (3.4) on the boundary  $x = 0$ , for  $W = \lambda_e$  (top),  $W = 2\lambda_e$  (middle) and  $W = 3\lambda_e$  (bottom).

---

$W/\lambda_e$	$\delta k/k_e$ ( $15^\circ$ )			$\beta_d$ ( $15^\circ$ )			$\delta k/k_e$ ( $45^\circ$ )			$\beta_d$ ( $45^\circ$ )		
	num.	exp.	theo.	num.	exp.	theo.	num.	exp.	theo.	num.	exp.	theo.
1	1.67	1.11	1.21	0.97	0.94	0.94	1.31	1.08	1.21	0.97	0.92	0.94
2	0.58	0.57	0.60	0.99	0.97	0.96	0.61	0.58	0.60	0.99	0.96	0.96
3	0.37	0.39	0.40	0.99	0.99	0.97	0.40	0.39	0.40	0.99	0.98	0.97

---

TABLE 3. Relative half width,  $\delta k/k_e$ , and relative energy of the downward propagating wave,  $\beta_d$ , for cases 1, 7 and 8 of table 2, corresponding to a propagation angle of  $15^\circ$ , and experiments 4, 9 and 10 for a propagation angle of  $45^\circ$ .

---

### 3.3.4. Discretization

To study the impact of spatially discretized, rather than continuous, forcing, experiments were performed for  $W/\lambda_e = 3$  with  $M = 4$  and  $M = 12$ ; these being experiments 12 and 1 in table 2. For comparison, corresponding numerical simulations were also performed for these two configurations, as well as for the idealized case  $M \rightarrow \infty$ , which is listed as experiment 11 in table 2 and corresponds to forcing discretized on the scale of the grid resolution in the numerical simulations.

Snapshots of the experimental and numerical wave fields for  $M = 4$  are presented in figures 8(a) and 8(b), respectively, while figure 8(c) presents vertical cuts of the horizontal velocity field at  $x_C = 0.05$  m for these two data sets. Even for this coarse discretization, there is still a remarkably smooth and periodic wave field that looks little different to that obtained using  $M=12$  (see figure 6). And once again there is good agreement between experiment and numerics, with the slight exception of the outer edges of the profile where the numerical peaks are a little larger amplitude.

Although the cross-section of the emitted downward-propagating, nominally plane wave looks reasonable, the discretization does induce more of an undesired upward-propagating wave, which can clearly be seen in figures 8(a) and 8(b). Fourier spectra for experiments, numerics and theory corresponding to  $M=4$ , 12 and  $\infty$  are presented in figure 9 and, as predicted by (3.4), the strength of the negative wave numbers noticeably increases with decreasing  $M$ . Most notably, for  $M = 4$  (corresponding to  $\ell = 19.6$  mm) the discretization introduces a peak around  $k_z = -235(\pm 4)$  m $^{-1}$ , which is strongest in the theoretical spectrum but nevertheless evident in the experimental and numerical spectra. By analogy with the theory of optical gratings, this value is in good agreement with the canonical formula  $2\pi/\lambda_e - 2\pi/\ell = -241$  m $^{-1}$ , which can also be inferred from (3.4) when  $\ell \ll \lambda_e$ . For all three cases the principal peak remains sharp, with  $\delta k/k_e = 0.42$ . The value of  $\beta_d$  is 0.96 when  $M = 4$ , so a vast majority of the energy is still in the downward propagating wave field.

### 3.3.5. Amplitude

All the results presented thus far have been for  $A_0 = 5.0$  mm. To investigate the impact of a significantly larger amplitude of forcing on the quality of the radiated wave field, we performed a series of experiments with the same parameters as experiments 1, 3 and 4, with the exception of  $A_0 = 35.0$  mm; they are listed as experiments 13 to 15 in table 2.

We found that the qualitative level of agreement between experiment and numerics for snapshots of the wave field was comparable to that presented in figure 6(a) and (b). When a more quantitative comparison is made, however, some consequences of the higher-amplitude forcing become apparent. For example, for vertical cuts located at  $x_C = 0.075$  m the amplitude of the horizontal velocity component in the experiments was  $4.4 \pm 0.9$  mm s $^{-1}$ , compared to  $5.50 \pm 0.25$  mm s $^{-1}$  in the numerical simulations.

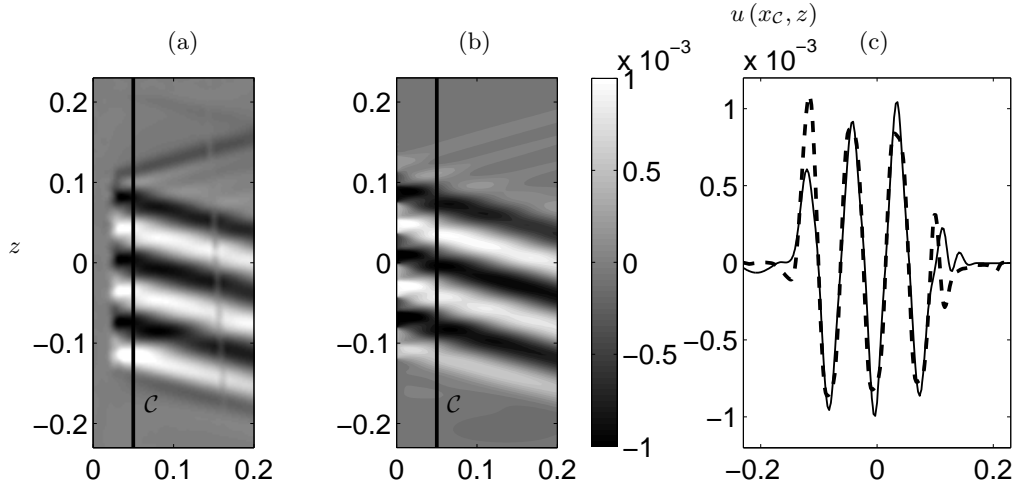


FIGURE 8. Horizontal velocity fields for (a) experiment and (b) simulation for case 12 in Table 2 with  $M = 4$ . (c) Vertical profiles along the cut  $\mathcal{C}$  located at  $x_C = 0.05$  m for the experiment (---) and the simulation (—). All lengths are in m and all velocities in  $\text{m s}^{-1}$ .

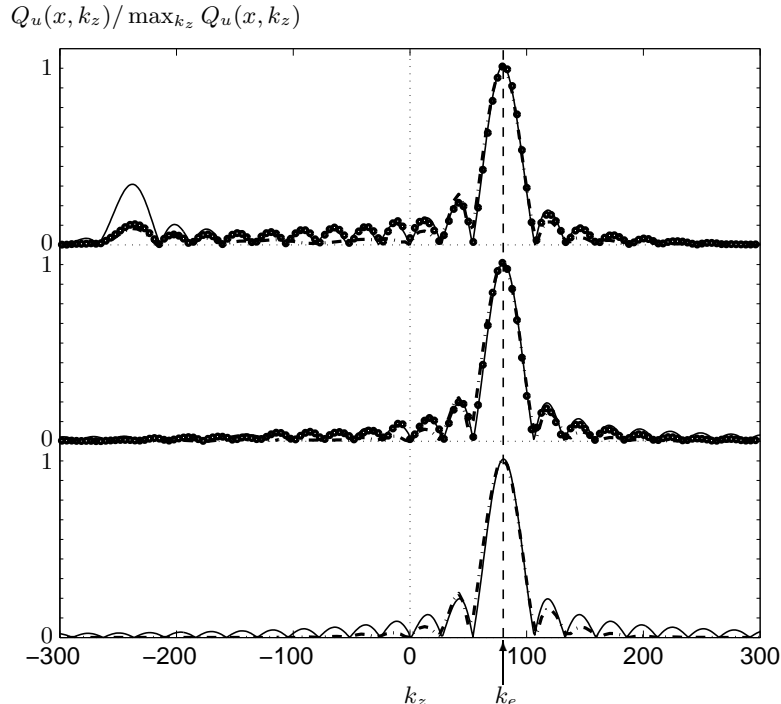


FIGURE 9. Comparison between spatial spectra  $Q_u(x, k_z)$  computed from the experiments ( $\circ$ ) and numerical simulations (---) at station  $x_C = 0.05$  m, and the theoretical expression (—) computed from (3.4) on the boundary  $x = 0$ , for  $M = 4$  (top), 12 (middle) and  $\infty$  (bottom).

We also note that although the forcing amplitude was increased by a factor of 7, in the experiments the wave amplitudes only increased by a factor of around 5. †

† We had to make these, and later, comparisons, for a vertical cross section further away from the generator than in our previous studies because the much larger amplitude motion of the



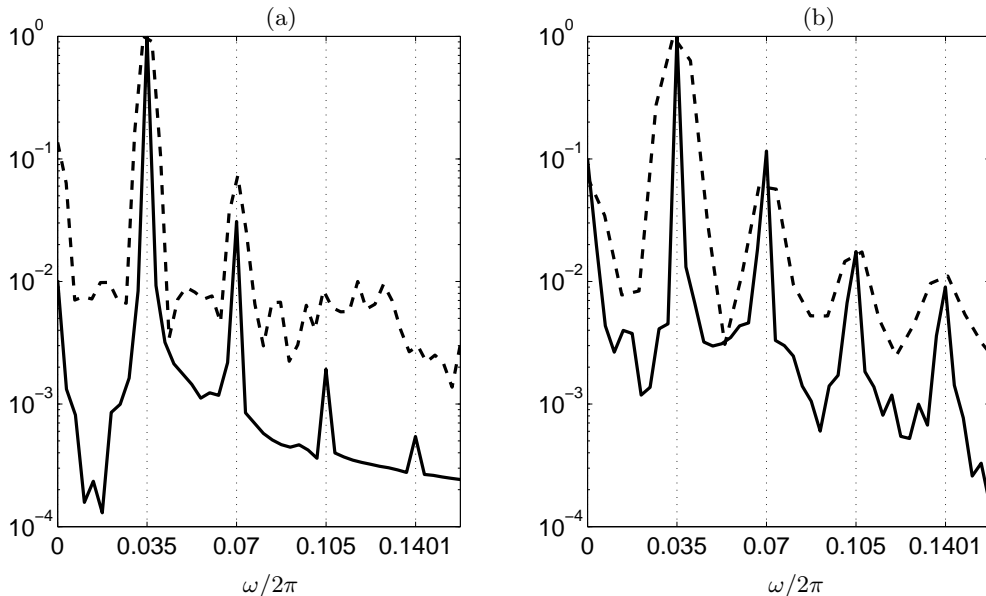


FIGURE 10. Vertically-averaged temporal Fourier spectra of horizontal velocity normalized by their maximum amplitude. The data was obtained from cuts at  $x_c = 0.075$  m for (a)  $A_0 = 0.005$  m and (b)  $A_0 = 0.035$  m, for experiments (---) and numerics (—).

Figure 10 presents vertically-averaged temporal spectra of the horizontal velocity for the cuts at  $x_c = 0.075$  m, for both small and large amplitude forcing. The numerical data, being at somewhat higher temporal resolution, has a lower noise level than the experimental data. Both experimental and numerical spectra display the same qualitative change; the large amplitude forcing introduces more significant higher harmonic content into the wave field.

The normalized spatial spectra of the wave field for frequencies corresponding to  $\theta = 15, 30$  and  $45^\circ$  are presented for both small and large amplitude forcing in figure 11. The angle of emission does not seem to significantly impact the quality of the wave field for the small amplitude forcing, but this is not so for the larger amplitude forcing, for which we find that  $\beta_d$  decreases from 0.97 to 0.94 for  $\theta = 15^\circ$  and  $30^\circ$ , respectively (although  $\delta k/k_e = 0.38$  remains constant). For  $\theta = 45^\circ$  and  $A_0 = 35.0$  mm, the generator no longer generates a clean plane wave, the main peak being centered around  $41.5 \text{ m}^{-1}$  and  $\beta_d = 0.80$ . The cause of this breakdown is not easy to discern. One hypothesis is that breakdown occurs at criticality, when the angle of wave propagation exceeds the maximum slope angle of the face of the generator,  $\theta_m = \frac{\pi}{2} - \arctan\left(\frac{2\pi A_0}{\lambda_e}\right)$ . The reason is not as simple as this, however, since  $\theta_m = 20^\circ$  for the experiments with  $A_0 = 35.0$  mm, and yet the generator is still an efficient source of plane waves for  $\theta = 30^\circ$ . Other factors, such as the nonlinear coupling between the plates and the wave field, as characterized by the Reynolds number of the plate motion, would also seem to play a role.

### 3.4. Summary

Through a systematic series of experiments, listed in Table 2, we can draw several conclusions about the ability of the novel wave generator to generate plane waves. We find that the spatial Fourier transform of the profile of the wave generator can reasonably predict  $a$  plates created a more intense wave field very close to the generator, where it was not possible to get reliable experimental data.

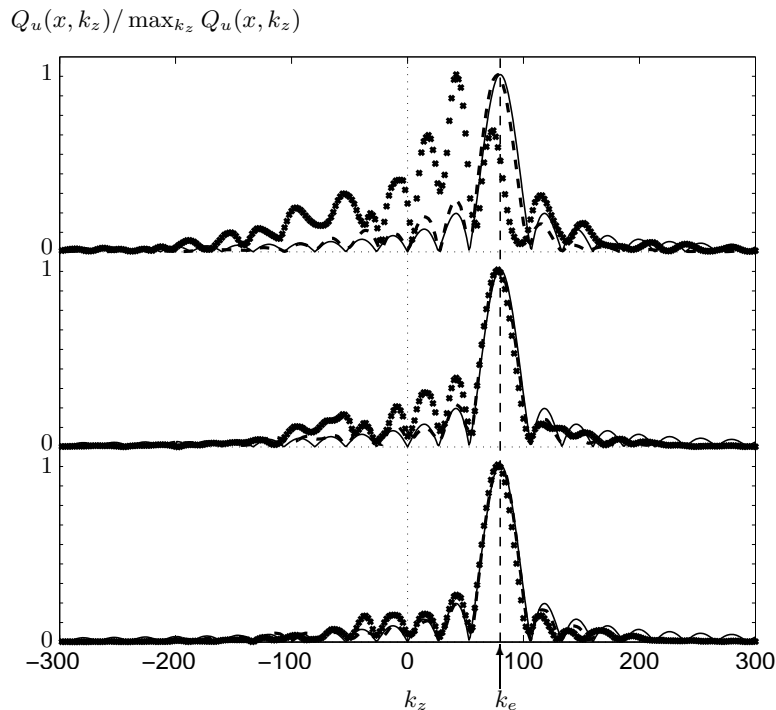


FIGURE 11. Comparison between spatial spectra  $Q_u(x, k_z)$  computed from the experiments with  $A_0 = 0.035$  m ( $\times$ ) and  $A_0 = 0.005$  m ( $-$ ) at station  $x_C = 0.075$  m and the theoretical expression ( $-$ ) computed from (3.4) on the boundary  $x = 0$ , for  $\theta = 45^\circ$  (top),  $30^\circ$  (middle) and  $15^\circ$  (bottom).

*priori* the spectrum of the radiated wave field. If more comprehensive resources are available, a numerical simulation with boundary forcing applied at  $x=0$  can reliably reproduce the emitted wave field for small-amplitude forcing. As one might expect, the spectrum of the wave field becomes increasingly sharp about the dominant wavelength, and thus more akin to a plane wave, as the number of wavelengths excited increases, and even a very crude spatial discretization of the desired wave form produces a remarkably smooth and coherent wave field. For large amplitude forcing, the main impact is an increase of the harmonic content of the wave field. Overall, we conclude that a vertically-standing wave generator produces a radiated wave field of high quality provided  $\theta \leq 45^\circ$ .

#### 4. Wave Beams

Wave beams are a common feature of internal wave fields in both laboratory experiments (Peacock & Tabei 2005; Gostiaux & Dauxois 2007) and geophysical settings (Lam, Maas & Gerkema 2004; Martin, Rudnick & Pinkel 2006), since they are readily generated by periodic flow relative to an obstacle, be it a cylinder or an ocean ridge for example. We choose to investigate the so-called Thomas–Stevenson profile (Thomas & Stevenson 1972), a viscous self-similar solution of (2.1) that can be considered as the far-field limit of the viscous solution of elliptic cylinder oscillating in a stratified fluid (Hurley & Keady 1997). It has been shown that this profile describes oceanographically relevant internal wave beams far from their generation site at the continental shelf (Gostiaux & Dauxois 2007); after their reflection at the bottom of the ocean, such wave beams are thought to

be the cause of solitons generated at the thermocline (see New & Da Silva 2002; Gerkema 2001, for instance).

#### 4.1. Analysis

Consider a downward-propagating, right-going beam at angle  $\theta \in [0, \pi/2]$  with respect to the horizontal, here  $\theta$  being defined to be positive in a clockwise sense. Let  $\xi = x \cos \theta - z \sin \theta + l$  and  $\eta = x \sin \theta + z \cos \theta$  be the coordinates parallel and transverse to the wave beam, respectively, with  $l$  corresponding to the distance from the point source to the origin of the cartesian frame at the center of the active region of the generator. At leading order, the parallel and transverse velocity components and buoyancy fields of the Thomas–Stevenson profile are:

$$u'(\xi, \eta, t) = u_0 \left( \frac{\xi N^2 \sin \theta}{g} \right)^{-2/3} \operatorname{Re} \left\{ \int_0^\infty k \exp(-k^3) \exp \left( ik\alpha \frac{\eta}{\xi^{1/3}} - i\omega t \right) dk \right\}, \quad (4.1a)$$

$$v'(\xi, \eta, t) = u_0 \left( \frac{\xi N^2 \sin \theta}{g} \xi \alpha^{3/2} \right)^{-2/3} \operatorname{Re} \left\{ -i \int_0^\infty k^3 \exp(-k^3) \exp \left( ik\alpha \frac{\eta}{\xi^{1/3}} - i\omega t \right) dk \right\}, \quad (4.1b)$$

and

$$b(\xi, \eta, t) = Nu_0 \left( \frac{\xi N^2 \sin \theta}{g} \right)^{-2/3} \operatorname{Re} \left\{ -i \int_0^\infty k \exp(-k^3) \exp \left( ik\alpha \frac{\eta}{\xi^{1/3}} - i\omega t \right) dk \right\}, \quad (4.1c)$$

where  $u_0$  is the amplitude of the horizontal velocity and  $\alpha = (2N \cos \theta / \nu)^{1/3}$ .

In principle, to most accurately reproduce (4.1) one should tilt the generator and configure the profile of the forcing plates to match the transverse profile of the Thomas–Stevenson beam. As stated earlier, however, we consider a vertically-standing wave generator, since one will typically want to investigate several wave beam angles in an experiment and reconfiguring the system for each angle is impractical. Thus we seek to reproduce the profile (4.1) by using only the longitudinal velocity profile (4.1a), instead of the true horizontal velocity profile, to prescribe the forcing at  $x=0$ , i.e.

$$u(0, z, t) = u'(l, z, t). \quad (4.2)$$

This is an approximation of the exact solution, which will become increasingly valid with decreasing  $\theta$ . For a given viscosity, stratification and forcing frequency that determine  $\alpha$ , equation (4.2) sets effective values for the parameters  $l$  and  $u_0$  in (4.1).

#### 4.2. Configuration

The experiments were performed using the ENS Lyon generator (see table 1) with a background stratification  $N = 0.82 \text{ rad s}^{-1}$  and forcing frequencies  $\omega = 0.20 \text{ rad s}^{-1}$ ,  $0.44 \text{ rad s}^{-1}$  and  $0.58 \text{ rad s}^{-1}$ , corresponding to propagation angles of  $14^\circ$ ,  $32^\circ$  and  $44^\circ$  respectively. The arrangement used twenty-one plates to discretize the profile at  $x = 0$ , thirteen of which covered the 9 cm active region. Based on the results of section 3.3.4, this level of discretization is expected to be sufficient to resolve the structure of the wave beam. The configuration of the cams (amplitude and evolution of the phase) is depicted in figure 2, with the maximum amplitude of oscillation being 10 mm.

Experimental visualizations were performed using the Synthetic Schlieren method, which gives direct measurements of the gradient of the buoyancy field. For the following study, we integrate this data and compare the measured buoyancy field with the analytical model (4.1c) and numerical results. For these simulations, the numerical domain was

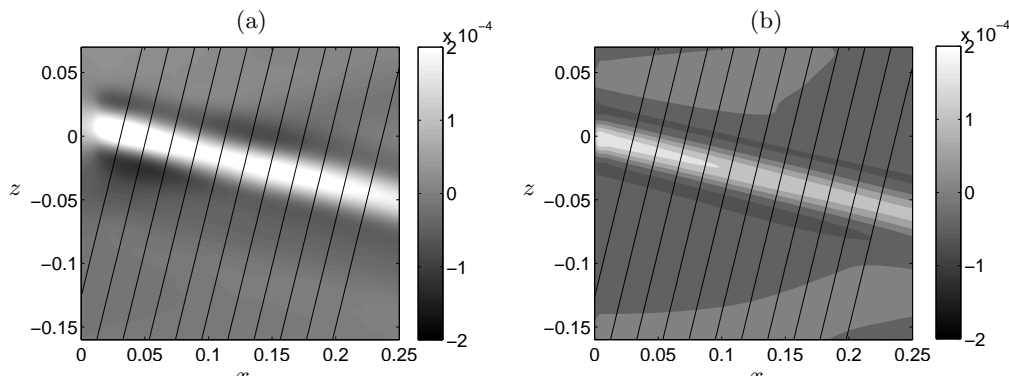


FIGURE 12. Buoyancy field  $b(x, z, t)$  for a  $14^\circ$  Thomas–Stevenson beam. Black lines are the transverse cuts used in figure 13 to compare with the model. (a) Experimental and (b) numerical buoyancy fields are in  $\text{rad.s}^{-2}$ .

0.80 m long and 0.60 to 1.01 m high, with a vertical resolution  $\Delta z = 0.79$  mm. The forcing on the boundary was discretized on the scale of the numerical grid.

#### 4.3. Results

A direct comparison between experimental and numerical buoyancy fields for  $\theta = 14^\circ$  is presented in figure 12. There is close qualitative agreement between the two, and it is notable that there is no visible sign of any upward propagating beam coming from the generator, due to the highly resolved, smooth boundary conditions that were used. For a vertical cut at  $x_C = 0.05$  m of the vertical component of the density gradient,  $\partial_z b$ , we find that  $\beta_d = 0.98$  for the experiments and  $\beta_d = 0.99$  for the numerics. We note that the maximum values of  $\partial_z b$  are around 2% of the background stratification, and so the wave field can reasonably be considered linear. Analysis of temporal spectra confirmed that harmonics were at least one order of magnitude smaller than the fundamental signal.

For a more quantitative comparison with the self-similar solution of Thomas–Stevenson, we investigate the buoyancy field extracted along the cuts indicated in figures 12(a) and (b). Specifically, we consider the normalized transverse profiles:

$$\frac{b(\eta/\xi^{1/3})}{b_m(\xi)} = \frac{\int_0^\infty k \exp(-k^3 + ik\alpha\eta/\xi^{1/3}) dk}{\int_0^\infty k \exp(-k^3) dk}, \quad (4.3)$$

where

$$b_m(\xi) = \max_\eta b(\xi, \eta, 0) = Nu_0 \left( \frac{\xi N^2 \sin \theta}{g} \right)^{-2/3} \int_0^\infty k \exp(-k^3) dk \quad (4.4)$$

is the maximum amplitude of the buoyancy perturbation (4.1c) along a transverse cut, which lies at the center of the beam ( $\eta = 0$ ). The results are presented in figure 13(a) and (b), where it can be seen that both the experimental and numerical results evolved spatially in a self-similar manner, with only small differences compared to the analytical model.

We also confirmed the ability of the generator to produce waves beams for some steeper angles, by performing experiments for  $\theta = 32^\circ$  and  $\theta = 44^\circ$ . Comparisons with the analytical solution revealed the same level of agreement as for the  $\theta = 14^\circ$  wave beam. The wave generator still emitted a beam in only one direction, and the experimental

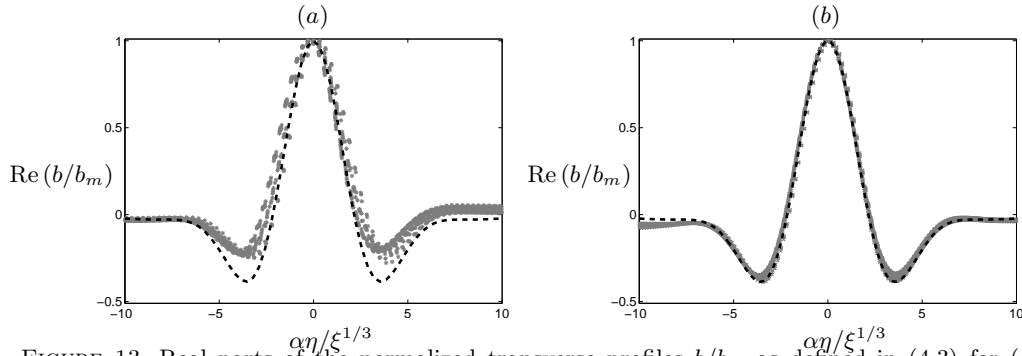


FIGURE 13. Real parts of the normalized transverse profiles  $b/b_m$  as defined in (4.3) for (a) experiments and (b) numerical simulations as a function of  $\alpha\eta/\xi^{1/3}$  for the case  $\theta = 14^\circ$ . Asterisks correspond to the different cuts in figure 12, the dashed line corresponds to the analytical solution in (4.3).

values of  $\beta_d$  were 0.99(8) for  $\theta = 32^\circ$  and 0.99(8) for  $\theta = 44^\circ$ , with no discernable change in the value of  $\beta_d$  for the numerical simulations.

#### 4.4. Summary

On the basis of this study, we conclude that the novel wave generator is capable of producing a wave beam structure of a desired form, which demands excitation of a prescribed Fourier spectrum. We have demonstrated this for the example of the Thomas–Stevenson profile, and speculate that although it is not necessary, perhaps even closer agreement with theory can be obtained using a tilted generator.

## 5. Vertical modes

Vertical internal wave modes play an important role in our current understanding of internal tides in the ocean (Garrett & Kunze 2007). To date, however, there has been little progress in producing high-quality vertical modes in laboratory experiments. Thorpe (1968) generated a mode-1 disturbance by oscillating a flap hinged about a horizontal axis at mid-depth; and Nicolaou *et al.* (1993) produced low modes in an essentially two-layer system with a thermocline, but neither of these approaches can readily produce arbitrary modes in an arbitrary stratification. Generalized forcing of a spectrum of vertical modes was obtained by Echeverri *et al.* (2009), who used an oscillating Gaussian topography to generate an internal wave field, and developed a robust algorithm for extracting modal amplitudes from experimental data. Here, we demonstrate the ability of the novel wave generator to reliably produce arbitrary internal wave modes.

### 5.1. Analysis

For a stratified fluid of constant  $N$ , the horizontal velocity field associated with the  $n^{\text{th}}$  vertical mode of frequency  $\omega$  propagating from left to right is:

$$u_n(x, z, t) = \text{Re} \left[ u_0 \cos \left( \frac{n\pi z}{H} \right) \exp \left( i \frac{n\pi}{H \cot \theta} x - i\omega t \right) \right], \quad (5.1)$$

where  $u_0$  is a complex amplitude that sets both magnitude and phase,  $n$  is a positive integer,  $z = 0$  and  $z = H$  are the bottom and top boundaries, respectively, and  $\theta$  is the first-quadrant angle that satisfies the dispersion relation (1.1). Note that  $\theta$  does not specify the direction of energy propagation for a vertical mode and only plays a part in setting the horizontal wavenumber (Gill 1982).

The idealized boundary forcing of the horizontal velocity at  $x = 0$  to excite the  $n^{\text{th}}$  vertical mode is:

$$u(0, z, t) = a \cos\left(\frac{n\pi z}{H}\right) \cos(\omega t), \quad (5.2)$$

where  $a$  is an arbitrary amplitude. To analyze the quality of the wave field generated by this forcing, instead of Fourier transforms one uses modal analysis, which is equivalent to Fourier series in a constant stratification. The horizontal velocity component of the resulting wave field can be written as:

$$u(x, z, t) = \sum_{n=1}^{n=\infty} a_n \cos\left(\frac{n\pi z}{H}\right) \cos\left(\frac{n\pi x}{H \cot \theta} - \omega t + \phi_n\right), \quad (5.3)$$

where  $a_n$  and  $\phi_n$  are the strength and the phase of the  $n^{\text{th}}$  mode respectively. Similar results exist for other physical variables, including vertical velocity and buoyancy fields.

From a practical point of view, one decomposes the experimental generated wave field at a fixed  $x$  location into the vertical basis modes using the numerical algorithm described and implemented in Echeverri *et al.* (2009). The modal decomposition is then performed at several other  $x$  locations, and the variations in  $a_n$  and  $\phi_n$  across various  $x$  locations gives an estimate of the experimental errors in the results. One can reliably correct for viscous dissipation of the modes, if needs be, by introducing in (5.3) a multiplicative term of the type  $e^{-f_n x}$ , with

$$f_n = \frac{\nu n^3}{2\omega} \left(\frac{\pi}{H}\right)^2 \left[\frac{N^2}{N^2 - \omega^2}\right]^2 \quad (5.4)$$

being the spatial damping rate (Thorpe 1968; Echeverri *et al.* 2009). In our experiments,  $f_n$  is very small (roughly  $10^{-4} \text{ m}^{-1}$  for mode-1 and  $10^{-3} \text{ m}^{-1}$  for mode-2) and hence viscous dissipation can be neglected.

The discretization results for plane waves in section 3.3.4 suggest that there could be limitations on the ability to resolve a vertical mode due to the discretization of the wave generator. By computing the modal decomposition of the discrete plate arrangement, we find that provided at least  $3n$  equispaced plates are used to represent the  $n^{\text{th}}$  mode, then more than 95% of the boundary forcing is contained in the  $n^{\text{th}}$  mode. To ensure good quality of the generated wave field also requires one to account for the approximation that the boundary forcing of horizontal velocity occurs at a fixed  $x$  location even though the plates are actually moving. For this approximation to hold, the ratio of the maximum amplitude of oscillations of the plates to the horizontal wavelength corresponding to the  $n^{\text{th}}$  mode should be much smaller than unity, i.e.  $nA_0/(2H \cot \theta) \ll 1$ . Provided these two conditions are satisfied, a high-quality wave field is to be expected.

## 5.2. Configuration

The MIT facility was used for the experiments with  $N_p = 64$  of the total 82 plates (see table 1). Individual vertical modes were produced by configuring the  $N_p$  plates of the wave generator to reproduce (5.2). The amplitude of oscillation of the  $j^{\text{th}}$  plate centered at vertical position  $z_j = j\ell/2$  of mode  $n$  was  $A(z_j) = A_0 \cos(n\pi z_j/H)$ , with  $\ell$  being the plate thickness (see Fig. 2 for more details of the configuration). Experiments were performed for modes 1 and 2. The spatial resolution of the forcing, relative to the vertical wavelength of the mode being forced, was  $1/64$  in both experiments. The fluid depth was  $H = 0.416 \text{ m}$ , the maximum amplitude of oscillation was  $A_0 = 2.5 \text{ mm}$  and the stratification was  $N \simeq 0.85 \text{ rad s}^{-1}$ . Visualization of the wave field was performed using PIV technique. Using this arrangement it was possible to observe the wave field in

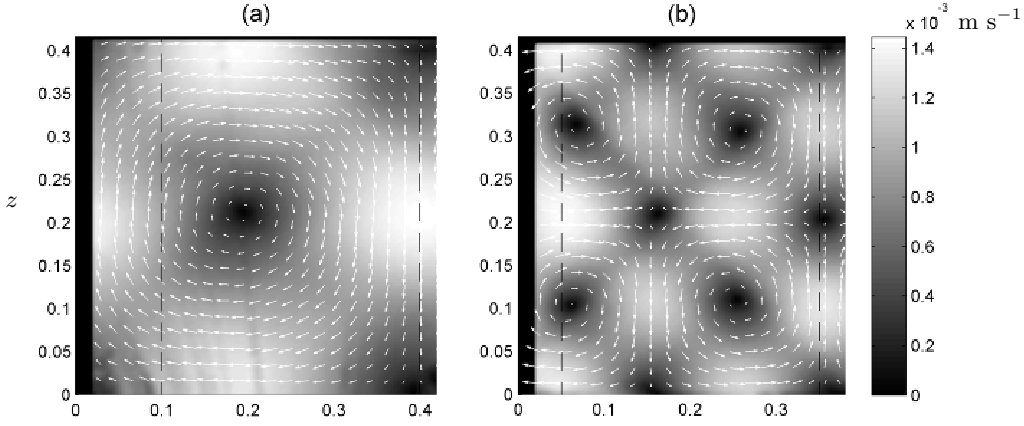


FIGURE 14. Snapshots of experimental velocity fields for (a) mode-1 and (b) mode-2. The location of the wave generator is  $x = 0$  and the vertical dashed lines bound the domain over which modal decomposition is performed. The  $x$  and  $z$  coordinates are in meters and the grey scale is the velocity magnitude in  $\text{m s}^{-1}$ . Arrows indicate local velocity direction.

a 45 cm-wide horizontal domain and covering the full depth of the tank. No corresponding numerical simulations were performed in this case.

### 5.3. Results

We present detailed results for mode-1 and mode-2 wave fields with  $\theta=45^\circ$ , for which the horizontal wavelengths excited were  $k_x = 7.55 \text{ m}^{-1}$  and  $k_x = 15.1 \text{ m}^{-1}$ , respectively. Snapshots of the wave fields obtained in the vicinity of the generator are presented in figure 14. One can clearly see the characteristic structure of a single vortex that covers the entire vertical domain for mode-1 (figure 14(a)), whereas for mode-2 the structure comprises stacked pairs of counter rotating vortices (figure 14(b)).

Modal decomposition of the experimental wave fields was performed at 81  $x$ -locations in the regions bounded by the vertical dashed lines in figures 14(a) and 14(b), and the results are presented in figure 15. Since the maximum values of both  $u$  and  $w$  were the same for these  $\theta = 45^\circ$  wave fields, reliable values of  $a_n$  and  $\phi_n$  were obtained from both components of the velocity field. The two wave fields were clearly dominated by their mode number, with by far the largest detectable amplitude being for modes-1 and modes-2 in the two respective experiments, and with very little variability across the experimental domain, emphasizing the weak impact of viscosity in these experiments. We also observed very little variability in the phase of the dominant mode across the visualization window, implying that the wave fields were highly spatially coherent. Since energy flux scales as  $a_n^2/n$  (Echeverri *et al.* (2009)) over 98.8 % of the energy was in the desired mode in each experiment. The efficiency of conversion, defined as  $a_n/A\omega$ , was 0.89 and 0.78 for the two experiments. The insets in figure 15 present the vertically-averaged temporal Fourier spectrum of  $u$ . These are dominated by the fundamental frequency, demonstrating that very little higher-harmonic content was generated by nonlinearity.

### 5.4. Summary

Overall, these experiments reveal that the novel wave generator is capable of producing very high-quality radiating vertical modes in a linear stratification. For smaller angles (i.e. lower frequencies),  $\theta = 15^\circ$  for example, we found that the wave field took longer horizontal distances to evolve into established modal solutions, presumably due to the

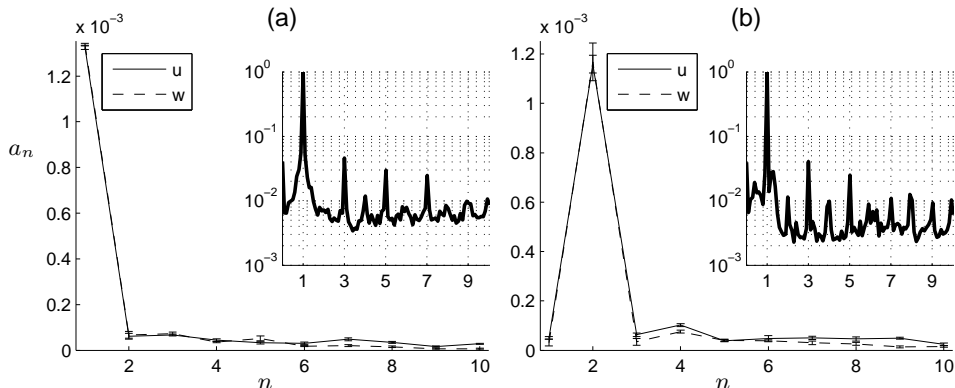


FIGURE 15. Modal decompositions of the wave fields presented in (a) figure 14(a), and (b) figure 14(b). Error bars are the standard deviation of modal amplitude for the 81 vertical cross-sections studied between the dashed lines in figure 14. The insets show vertically averaged absolute value of the temporal Fourier spectra of  $u$  at  $x = 10$  cm and  $x = 5$  cm in (a) and (b), respectively.

longer horizontal wave lengths of the modes. For higher frequencies,  $\theta = 60^\circ$  for example, we observed high-quality modal solutions within our visualization window, but with a small variation in the dominant modal strength for mode-2, possibly due to nonlinear effects. For higher angles, therefore, it would seem prudent to decrease the maximum amplitude of oscillations and/or reduce the stratification  $N$  (allowing for lower forcing frequency) in an effort to produce as clean a wave field as possible. In principle, this approach can be extended to experiments with nonlinear density stratifications, provided the stratification is known *a priori* so that the generator can be configured for the appropriate vertical structure of the horizontal velocity field.

## 6. Conclusions

Through combined experimental, numerical and theoretical studies we have demonstrated that the novel type of internal wave generator, comprising a series of stacked, offset plates, can reliably shape the spatial structure of an experimental internal wave field and enforce wave propagation. This approach is similar in spirit to multiple-paddle techniques that have been developed for generating *surface* waves (see Naito 2006, for instance). We have demonstrated the ability of the generator to produce three qualitatively-different types of wave field: plane waves, wave beams and vertical modes. This new technology therefore provides a very useful tool to study all manner of internal wave scenarios in the laboratory, in order to gain insight into geophysically important problems. Furthermore, our studies reveal that the Fourier transform of the spatial profile of the wave generator provides a reasonably accurate prediction of the form of emitted wave field, making it a useful tool when designing experiments.

There are numerous examples of where this new found capability can now be utilized. For example, observations in several locations, in particular in the Bay of Biscay (New & Pingree 1990; New & Da Silva 2002), have determined that an internal tidal beam striking the thermocline is responsible for the generation of solitons. A full understanding of the generation mechanism has yet to be achieved, however, and laboratory experiments using the Thomas–Stevenson beam profile impinging on a thermocline could provide significant insight. Indeed, the interaction of wave beams with nonlinear features in the density stratification is of widespread interest (Mathur & Peacock 2009), since this is also relevant to how and where atmospheric internal waves break and deposit their momentum



(Nault & Sutherland 2007). In regards to ocean mixing problems, an open issue is to determine the fate of the internal tide which, among other things, can be scattered by topography (Johnston & Merrifield 2003; Ray & Mitchum 1997). The ability to directly generate vertical modes provides a new capability to study these important processes in controlled settings. Other interesting avenues for research are the generation of shear waves (McEwan & Baines 1974) and extensions to three-dimensional wave fields, which could be achieved by introducing some horizontal spatial structure (in the  $y$ -direction) to the leading edge of the moving plates.

## Acknowledgments

We thank D. Le Tourneau, M. Moulin and A. Gallant for technical help, and Robert Smith and Ian Curtis for their creative input and decisive inspiration. This work has been partially supported by the ANR grant PIWO (ANR-08-BLAN-0113-01), the MIT-France program, NSF grant 0645529 and ONR grant N00014-09-0282.

## REFERENCES

- AGUILAR, D. A. & SUTHERLAND, B. R. 2006 Internal wave generation from rough topography. *Phys. Fluids* **18**, 066603.
- ALEXANDER, M.J., RICHTER, J.H. & SUTHERLAND, B.R. 2006 Generation and trapping of gravity waves from convection with comparison to parameterization. *J. Atmos. Sci.* **63**, 2963–2977.
- BAINES, P. G. & HOINKA, K. P. 1985 Stratified flow over two-dimensional topography in fluid of infinite depth: a laboratory simulation. *J. Atmospheric Sciences* **42**, 1614–1630.
- BELL, T. H. 1975 Lee waves in stratified flows with simple harmonic time dependence. *J. Fluid Mech.* **67**, 705–722.
- DALZIEL, S. B., HUGHES, G. O. & SUTHERLAND, B. R. 2000 Whole-field density measurements by "synthetic Schlieren". *Exp. Fluids* **28**, 322–335.
- DAUXOIS, T. & YOUNG, W. R. 1999 Near-critical reflection of internal waves. *J. Fluid Mech.* **390**, 271–295.
- DELISI, D. P. & ORLANSKI, I. 1975 On the role of density jumps in the reflection and breaking of internal gravity waves. *J. Fluid Mech.* **69**, 445–464.
- ECHEVERRI, P., FLYNN, M. R., PEACOCK, T. & WINTERS, K. B. 2009 Low-mode internal tide generation by topography: An experimental and numerical investigation. *J. Fluid Mech.* **636**, 91–108.
- ERMANIYUK, E. V. & GAVRILOV, N. V. 2008 On internal waves generated by large-amplitude circular and rectilinear oscillations of a circular cylinder in a uniformly stratified fluid. *J. Fluid Mech.* **613**, 329–356.
- FINCHAM, A. & DELERCE, G. 2000 Advanced optimization of correlation imaging velocimetry algorithms. *Exp. Fluids* **29**, S1.
- GARRETT, C. & KUNZE, E. 2007 Internal tide generation in the deep ocean. *Annu. Rev. Fluid Mech.* **39**, 57–87.
- GAVRILOV, N. V. & ERMANIYUK, E. V. 1996 Internal waves generated by circular translational motion of a cylinder in a linearly stratified fluid. *J. App. Mech. Tech. Phys.* **38**, 224–227.
- GERKEMA, T. 2001 Internal and interfacial tides: beam scattering and local generation of solitary waves. *J. Mar. Res.* **59**, 227–255.
- GILBERT, N. 1988 Transition von der laminaren in die turbulente Kanalströmung. PhD thesis, DFVLR Institut für Strömungsmechanik Göttingen.
- GILL, A. E. 1982 Atmosphere-ocean dynamics. In *Atmosphere-Ocean Dynamics* (ed. Academic Press Inc.). Academic Press (London).
- GOSTIAUX, L. 2006 Etude expérimentale des ondes de gravité internes en présence de topographie. émission, propagation, réflexion. PhD thesis, ENS Lyon.
- GOSTIAUX, L. & DAUXOIS, T. 2007 Laboratory experiments on the generation of internal tidal beams over steep slopes. *Phys. Fluids* **19**, 028102.

- GOSTIAUX, L., DIDELLE, H., MERCIER, S. & DAUXOIS, T. 2007 A novel internal wave generator. *Exp. Fluids* **42**, 123–130.
- HURLEY, D. G. & KEADY, G. 1997 The generation of internal waves by vibrating elliptic cylinders. part 2. Approximate viscous solution. *J. Fluid Mech.* **351**, 119–138.
- IVEY, G. N., WINTERS, K. B. & DE SILVA, I. P. D. 2000 Turbulent mixing in a sloping benthic boundary layer energized by internal waves. *J. Fluid Mech.* **418**, 59–76.
- JOHNSTON, T. M. S. & MERRIFIELD, M. A. 2003 Internal tide scattering at seamounts, ridges and islands. *J. Geophys. Res.* **108** (C6), 3180.
- KLEISER, L. & SCHUMANN, U. 1980 Treatment of incompressibility and boundary conditions in 3-D numerical spectral simulations of plane channel flows. In *Proceedings of third GAMM conference on numerical methods in fluid mechanics*.
- KLEISER, L. & SCHUMANN, U. 1984 Spectral simulations of the laminar–turbulent transition process in plane poiseuille flow. In *Spectral methods for partial differential equations* (ed. R. G. Voigt, D. Gottlieb & M. Y. Hussaini), pp. 141–163. Philadelphia: SIAM.
- LAM, F. P. A., MAAS, L. R. M. & GERKEMA, T. 2004 Spatial structure of tidal and residual currents as observed over the shelf break in the bay of biscay. *Deep-Sea Res. Part I* **51**, 1075–1096.
- LIGHTHILL, J. 1978 *Waves in fluids*. Cambridge University Press.
- MAAS, L. R. M., BENIELLI, D., SOMMERIA, J. & LAM, F. P. A. 1997 Observation of an internal wave attractor in a confined stably stratified fluid. *Nature* **388**, 557–561.
- MARTIN, J. P., RUDNICK, D. L. & PINKEL, R. 2006 Spatially broad observations of internal waves in the upper ocean at the hawaiian ridge. *J. Phys. Oceanogr.* **36**, 1085–1103.
- MARTINAND, D., CARRIÈRE, PH. & MONKEWITZ, P. A. 2006 Three-dimensional global instability modes associated with a localized hot spot in Rayleigh–Bénard–poiseuille convection. *J. Fluid Mech.* **551**, 275–301.
- MATHUR, M. & PEACOCK, T. 2009 Internal wave beam propagation in nonuniform stratifications. *J. Fluid Mech.* **639**, 133–152.
- MC EWAN, A. D. & BAINES, P. G. 1974 Shear fronts and an experimental stratified shear flow. *J. Fluid Mech.* **63**, 257–272.
- MERCIER, M. J., GARNIER, N. B. & DAUXOIS, T. 2008 Reflection and diffraction of internal waves analyzed with the Hilbert transform. *Phys. Fluids* **20**, 086601.
- MOWBRAY, D. E. & RARITY, B. S. H. 1967 A theoretical and experimental investigation of the phase configuration of internal waves of small amplitude in a density stratified fluid. *J. Fluid Mech.* **28**, 1–16.
- NAITO, S. 2006 Wave generation and absorption - theory and application -. In *Proceedings of the Sixteenth (2006) International Offshore and Polar Engineering Conference*, pp. 1–9.
- NAULT, J. T. & SUTHERLAND, B. R. 2007 Internal wave transmission in non-uniform flows. *Phys. Fluids* **19**, 016601.
- NEW, A. L. & DA SILVA, J. C. B. 2002 Remote sensing evidence for the local generation of internal soliton packets in the central Bay of Biscay. *Deep-Sea Res. Part I* **49**, 915–934.
- NEW, A. L. & PINGREE, R. D. 1990 Evidence for internal tidal mixing near the shelf break in the bay of biscay. *Deep Sea Research* **37**, 1783–1803.
- NICOLAOU, D., LIU, R. & STEVENSON, T. N. 1993 The evolution of thermocline waves from an oscillatory disturbance. *J. Fluid Mech.* **254**, 401–416.
- OSBORNE, A. R., BURCH, T. L. & SCARLET, R. I. 1978 The influence of internal waves on deep-water drilling. *J. Petrol. Eng.* **30**, 1497–1504.
- OSTER, C. 1965 Density gradients. *Sci. Am.* **213**, 70–76.
- PEACOCK, T. & TABAEI, A. 2005 Visualization of nonlinear effects in reflecting internal wave beams. *Phys. Fluids* **17**, 061702.
- RAY, R.D. & MITCHUM, G.T. 1997 Surface manifestation of internal tides in the deep ocean: observations from altimetry and island gauges. *Prog. Ocean.* **40**, 135–162.
- TABAEI, A. & AKYLAS, T. R. 2003 Nonlinear internal gravity wave beams. *J. Fluid Mech.* **482**, 141–161.
- TABAEI, A., AKYLAS, T. R. & LAMB, K. G. 2005 Nonlinear effects in reflecting and colliding internal wave beams. *J. Fluid Mech.* **526**, 217–243.
- THOMAS, N. H. & STEVENSON, T. N. 1972 A similarity solution for viscous internal waves. *J. Fluid Mech.* **54**, 495–506.

- THORPE, S. A. 1968 On the shape of progressive internal waves. *Phil. Trans. R. Soc. Lond. A* **263**, 563–614.
- THORPE, S. A. 1987 On the reflection of a train of finite-amplitude internal waves from a uniform slope. *J. Fluid Mech.* **178**, 279–302.
- THORPE, S. A. 1998 Nonlinear reflection of internal waves at a density discontinuity at the base of a mixed layer. *J. Phys. Oceanogr.* **28**, 1853–1860.
- VOISIN, B. 2003 Limit states of internal wave beams. *J. Fluid Mech.* **496**, 243–293.
- WALTERSCHEID, R. L., SCHUBERT, G. & BRINKMAN, D. G. 2001 Small scale gravity waves in the upper mesosphere and lower thermosphere generated by deep tropical convection. *J. Geophys. Res.* **106** (D23), 31825–31832.