



HAL
open science

Processes controlling the Si-isotopic composition in the Southern Ocean and application for paleoceanography

François Fripiat, Anne-Julie Cavagna, Frank Dehairs, Anouk de Brauwere,
Luc André, Damien Cardinal

► To cite this version:

François Fripiat, Anne-Julie Cavagna, Frank Dehairs, Anouk de Brauwere, Luc André, et al.. Processes controlling the Si-isotopic composition in the Southern Ocean and application for paleoceanography. Biogeosciences, 2012, 9 (7), pp.2443-2457. 10.5194/bg-9-2443-2012 . hal-01138257

HAL Id: hal-01138257

<https://hal.science/hal-01138257>

Submitted on 7 Dec 2015

HAL is a multi-disciplinary open access archive for the deposit and dissemination of scientific research documents, whether they are published or not. The documents may come from teaching and research institutions in France or abroad, or from public or private research centers.

L'archive ouverte pluridisciplinaire **HAL**, est destinée au dépôt et à la diffusion de documents scientifiques de niveau recherche, publiés ou non, émanant des établissements d'enseignement et de recherche français ou étrangers, des laboratoires publics ou privés.



Distributed under a Creative Commons Attribution 4.0 International License



Processes controlling the Si-isotopic composition in the Southern Ocean and application for paleoceanography

F. Fripiat^{1,2}, A.-J. Cavagna³, F. Dehairs³, A. de Brauwere^{3,4}, L. André¹, and D. Cardinal^{1,*}

¹Section of Mineralogy and Petrography, Royal Museum for Central Africa, Tervuren, Belgium

²Department of Earth and Environmental Sciences, Université Libre de Bruxelles, Brussels, Belgium

³Analytical and Environmental Chemistry & Earth System Sciences, Vrije Universiteit Brussel, Brussels, Belgium

⁴Institute of Mechanics, Materials and Civil Engineering (IMMC), Université Catholique de Louvain, Louvain-la-Neuve, Belgium

* now at: Laboratoire d'Océanographie et du Climat: Expérimentations et Approches Numériques (LOCEAN), Université Pierre et Marie Curie, Paris, France

Correspondence to: F. Fripiat (ffripiat@ulb.ac.be)

Received: 8 September 2011 – Published in Biogeosciences Discuss.: 17 October 2011

Revised: 25 April 2012 – Accepted: 16 May 2012 – Published: 6 July 2012

Abstract. Southern Ocean biogeochemical processes have an impact on global marine primary production and global elemental cycling, e.g. by likely controlling glacial-interglacial $p\text{CO}_2$ variation. In this context, the natural silicon isotopic composition ($\delta^{30}\text{Si}$) of sedimentary biogenic silica has been used to reconstruct past Si-consumption:supply ratios in the surface waters. We present a new dataset in the Southern Ocean from a IPY-GEOTRACES transect (Bonus-GoodHope) which includes for the first time summer $\delta^{30}\text{Si}$ signatures of suspended biogenic silica (i) for the whole water column at three stations and (ii) in the mixed layer at seven stations from the subtropical zone up to the Weddell Gyre. In general, the isotopic composition of biogenic opal exported to depth was comparable to the opal leaving the mixed layer and did not seem to be affected by any diagenetic processes during settling, even if an effect of biogenic silica dissolution cannot be ruled out in the northern part of the Weddell Gyre. We develop a mechanistic understanding of the processes involved in the modern Si-isotopic balance, by implementing a mixed layer model. We observe that the accumulated biogenic silica (sensu Rayleigh distillation) should satisfactorily describe the $\delta^{30}\text{Si}$ composition of biogenic silica exported out of the mixed layer, within the limit of the current analytical precision on the $\delta^{30}\text{Si}$. The failures of previous models (Rayleigh and steady state) become apparent especially at the end of the productive period in the mixed layer, when biogenic silica production and export are

low. This results from (1) a higher biogenic silica dissolution:production ratio imposing a lower net fractionation factor and (2) a higher Si-supply:Si-uptake ratio supplying light Si-isotopes into the mixed layer. The latter effect is especially expressed when the summer mixed layer becomes strongly Si-depleted, together with a large vertical silicic acid gradient, e.g. in the Polar Front Zone and at the Polar Front.

1 Introduction

In the Southern Ocean, the deep nutrient-rich waters ascend into the surface layer south of the Polar Front (PF), and are returned to the subsurface northward before the available pools of nitrogen and phosphorus are fully used by phytoplankton. In contrast, silicic acid ($\text{Si}[\text{OH}]_4$) becomes strongly depleted by diatom growth (Sarmiento et al., 2004). The balance between the efficiency of the biological pump (e.g. its ability to strip nutrients out of the mixed layer) and deep ocean ventilation releasing CO_2 are both likely to control the atmospheric CO_2 concentrations on glacial/interglacial timescales (Anderson et al., 2002, 2009; Brzezinski et al., 2002; Sigman et al., 2010).

The $\delta^{30}\text{Si}$ signatures of biogenic silica ($=^{30}\text{R}_{\text{bSiO}_2} \cdot ^{30}\text{R}_{\text{standard}} - 1$, reported in permil units, ‰, where $^{30}\text{R} = ^{30}\text{Si} \cdot ^{28}\text{Si}$) are a proxy of Si-nutrient utilization in paleoceanography, and have been used to formulate and

test hypotheses on both Southern Ocean productivity and fluctuations in atmospheric $p\text{CO}_2$ over glacial cycles (De La Rocha et al., 1998; Anderson et al., 2002; Brzezinski et al., 2002; De La Rocha, 2006; Beucher et al., 2007). During silicic acid consumption by diatoms, the lighter Si isotope (^{28}Si) is preferentially consumed, leaving the silicic acid pool enriched in heavy Si-isotope (^{30}Si) (De La Rocha et al., 1997). Such preferential incorporation of ^{28}Si into biogenic silica (bSiO_2) is defined by a fractionation factor ($^{30}\epsilon$), which is equivalent to the ratio of the reaction rates of the heavy (^{30}k) and light (^{28}k) Si-isotopes ($=^{30}\text{k}/^{28}\text{k} - 1$, reported in permil units, ‰). Therefore, for a given set of conditions setting the supply of $\text{Si}(\text{OH})_4$, a relationship is expected between the decrease of $\text{Si}(\text{OH})_4$ concentration due to the Si-uptake and the increase of $\delta^{30}\text{Si}$ of both bSiO_2 and $\text{Si}(\text{OH})_4$ (De La Rocha et al., 1997). However, the calibration of this proxy in the modern ocean has still not been fully achieved and processes such as $\text{Si}(\text{OH})_4$ supply and bSiO_2 dissolution can bias the expected relationship between $\text{Si}(\text{OH})_4$ concentration and $\delta^{30}\text{Si}$ composition (Demarest et al., 2009). For example, contemporary isotopic compositions of biogenic silica vary widely in the Southern Ocean (-0.5 to $+2.5$ ‰), while the isotopic range of silicic acid is smaller (from $+1.5$ to 3.4 ‰) (Varela et al., 2004; Cardinal et al., 2005, 2007; Fripiat et al., 2011a; Cavagna et al., 2011). None of the existing isotopic fractionation models are capable of reproducing these differences. This highlights the significant importance of fully understanding the different processes involved in contemporary Si-isotopic balances before applying this proxy to reconstruct past ocean environments.

New data from the summer Antarctic Circumpolar Current (ACC) are presented here, looking at the relationship between $\delta^{30}\text{Si}_{\text{Si}(\text{OH})_4}$ and $\delta^{30}\text{Si}_{\text{bSiO}_2}$ in the mixed layer. Primary objectives are to (1) assess the processes controlling mixed layer $\delta^{30}\text{Si}_{\text{bSiO}_2}$ and across the water column, and (2) the impact of such processes on the relationship between the relative silicic acid utilisation and $\delta^{30}\text{Si}$.

2 Materials and methods

2.1 Sampling and hydrology

Between 8 February and 8 March 2008, the GEOTRACES-International Polar Year (IPY) BONUS-GoodHope (BGH) cruise aboard R/V *Marion Dufresne* covered a transect from Cape Basin to the north of the Weddell Gyre (up to 58°S) centred around the 0° meridian (Fig. 1). Biogenic silica was sampled (1) in the mixed layer at 7 stations crossing the different hydrographic regimes of the ACC, and (2) from a profile of the surface to the deep ocean at 3 stations. For these stations and others from the same cruise, the water column profiles of silicic acid $\delta^{30}\text{Si}$ are discussed in an associated paper (Fripiat et al., 2011b). In the latter study, water masses

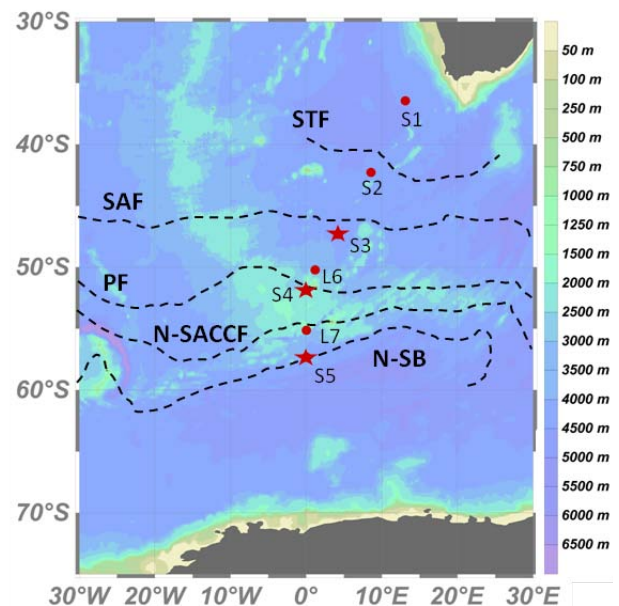


Fig. 1. Map of the study area with bathymetry and fronts (following Sokolov and Rintoul, 2009, and Swart et al., 2008): STF = SubTropical Front; SAF = SubAntarctic Front (middle branch); PF = Polar Front (middle branch); N-SACCF = northern branch of the Southern ACC front; N-SB = northern branch of the Southern Boundary (SB). The area north of the STF is the SubTropical Zone (STZ); between STF and SAF the SubAntarctic Zone (SAZ); between the SAF and PF the Polar Front Zone (PFZ); between the PF and SB the Antarctic Zone (AZ), and south of the SB the northern part of the Weddell Gyre (WG). The stations where only the mixed layer was sampled are represented by dots. The stations where water column bSiO_2 samples have been collected are represented by the stars. S refers to “super” stations and L to “large” stations. Mapping from Ocean Data View (Robert Schlitzer, available at <http://odv.awi.de>).

dynamics is suggested to be the main driving processes setting the distribution of the whole water-column $\delta^{30}\text{Si}_{\text{Si}(\text{OH})_4}$.

Seawater was collected using a CTD Rosette equipped with 121 Niskin bottles. Water samples (~ 0.25 to $\sim 10\text{l}$) were immediately filtered on $0.4\ \mu\text{m}$ Nuclepore polycarbonate membranes, using Perspex filtration units under the pressure of filtered air ($0.4\ \mu\text{m}$ Nuclepore; < 2 bar). Filtered water samples for silicic acid analyses were stored in acid-cleaned polypropylene (PP) bottles at room temperature in the dark. Nuclepore membranes were stored in polycarbonate Petri dishes and dried overnight at 50°C . Large Volume Filtration Systems, hereafter referred to as “in situ pumps” (Challenger Oceanic Systems and Services, Surry, UK), sampled the complete water column by filtering 15 to 250 l of water through hydrophilic polyestersulfone membranes (SUPOR, $293\ \text{mm}\ \varnothing$, $0.45\ \mu\text{m}$). After partitioning the filters amongst the different end-users knowing the used filter surface, the pieces of SUPOR membranes were dried overnight at 50°C and stored in Petri dishes in the dark at ambient temperature.

2.2 Analyses

Samples were processed ashore (RMCA, Tervuren). For bSiO₂ the membranes were subjected to a wet-alkaline digestion (adapted from Ragueneau et al., 2005) whereby bSiO₂ is dissolved with a 0.2 μmol l⁻¹ NaOH solution (pH 13.3) at 100 °C for 40 min. As this digestion can also dissolve some lithogenic silica, we also analyzed aluminum (Al) in the digested solution to check for possible lithogenic contamination. Aluminium was determined using a Sector Field Inductively Coupled Plasma Mass Spectrometer (SF-ICP-MS Element2, detection limit = 3 ppb, = 3*blank standard deviation). Using a Si:Al mass ratio of 3.74 for average crust (Taylor and McLennan, 1985), the lithogenic silica contributed to less than 2.5 % of the Si in digested samples. The average distribution of clays in marine sediments along the BONUS-GoodHope transect is <10 % kaolinite, >40 % illite, <20 % smectite and 20–30 % chlorite (Fütterer, 2006). The δ³⁰Si signatures for such different types of clays published in previous studies are the following: kaolinite -2.2 ± 0.4 ‰ (Ziegler et al., 2005; Opfergelt et al., 2010); illite: -0.9 ± 0.2 ‰ (Douthitt, 1982) smectite: -0.3 ± 0.2 ‰ (Georg et al., 2009). No δ³⁰Si value is available for chlorite. Setting the chlorite δ³⁰Si values to the one of kaolinite which maximizes the potential clay δ³⁰Si contamination, we estimate an average clay δ³⁰Si value for the BONUS-GoodHope transect of -1.3 to -1.0 ‰ using mass and isotopic balances from the expected distribution of clays. Taking the heavier BGH δ³⁰Si_{bSiO₂} and the calculated clay δ³⁰Si, with a lithogenic silica contamination of 2.5 %, the maximum potential contribution of such lithogenic Si to the measured δ³⁰Si is 0.1 ‰. Such a lithogenic contribution can be neglected since it is similar to the achieved analytical precision for δ³⁰Si determination (Abraham et al., 2008).

Si(OH)₄ and bSiO₂ concentrations were determined via a colorimetric method (Grasshoff et al., 1983) on the same samples as for Si-isotopic composition. Since Si(OH)₄ concentrations of surface and some subsurface samples at stations north of the Polar Front (PF) were too low (<10 μmol l⁻¹) to directly apply the Si purification procedure required for Si-isotopic measurement (De La Rocha et al., 1996), a Si(OH)₄ preconcentration step was performed. It was achieved using a protocol adapted by Brzezinski et al. (2003) and Reynolds et al. (2006) from the MAGIC method (Karl and Tien, 1992). Briefly, the method consists of one or two steps (depending of the Si-recovery of the first step) of the co-precipitation of Si(OH)₄ with brucite (Mg(OH)₂), by increasing pH either with NaOH 1 μmol l⁻¹ (20 ml l⁻¹ seawater, Reynolds et al., 2006) or NH₄OH 13.5 μmol l⁻¹ (6 ml l⁻¹ seawater Brzezinski et al., 2003). The precipitates were recovered by centrifugation and then redissolved with HCl.

Silicon was co-precipitated with triethylamine molybdate (De La Rocha et al., 1996) with a minimum Si requirement of ~1.5 μmol Si. After combustion of the silicomolyb-

date precipitate in covered Pt crucibles at 1000 °C, the pure cristobalite phase was transferred to pre-cleaned polypropylene vials. Dissolution of cristobalite was done in a dilute HF/HCl mixture as described in Cardinal et al. (2003). Isotopic measurements were carried out on a Nu Plasma MC-ICP-MS (ULB, Brussels) using Mg external doping in dry plasma mode following Abraham et al. (2008). The average precision and reproducibility of the measurements are ±0.1 ‰ (±1 sd) for δ³⁰Si (Reynolds et al., 2007). The accuracy of the measurements is checked on a daily basis on secondary reference materials (e.g. Diatomite) with known Si isotopic compositions resulting from an inter-comparison exercise (Reynolds et al., 2007).

3 Results

Surface δ³⁰Si_{Si(OH)₄} and [Si(OH)₄] display an opposite pattern with latitude (Table 1 and Fig. 2a). There is a ³⁰Si enrichment associated with the northward decreasing Si(OH)₄ gradient across the Polar Front (PF), as observed earlier for δ³⁰Si_{Si(OH)₄} (Varela et al., 2004; Cardinal et al., 2005) and Si(OH)₄ concentrations (Brzezinski et al., 2001; Quéguiner and Brzezinski, 2002). δ³⁰Si_{bSiO₂} values are systematically lighter than δ³⁰Si_{Si(OH)₄} values in agreement with the preferential uptake of ²⁸Si by diatoms. From the WG to the PFZ we observe a trend of increasing δ³⁰Si_{bSiO₂} following the δ³⁰Si_{Si(OH)₄} gradient, although the trend is much steeper for the former, as also observed by Varela et al. (2004) and Cardinal et al. (2007). North of the PFZ and SAZ, respectively, the δ³⁰Si_{bSiO₂} and δ³⁰Si_{Si(OH)₄} trend reverses, again displaying a steeper gradient for δ³⁰Si_{bSiO₂} values. This decoupling is reflected in the apparent fractionation factor (Δ³⁰Si = δ³⁰Si_{Si(OH)₄} - δ³⁰Si_{bSiO₂}) which varies widely with latitude (Fig. 2b). Low Δ³⁰Si values (~0.35 ± 0.10 ‰) are observed at the PF and in the PFZ. Such low values seem to be a recurrent feature in the Southern Antarctic Circumpolar Current at low Si(OH)₄ concentrations (Fig. 3). The mixed layer BONUS-GoodHope results for δ³⁰Si_{Si(OH)₄} (+1.8 to +3.2 ‰) and for δ³⁰Si_{bSiO₂} (+0.3 to +2.5 ‰) fall in the range reported for previous Southern Ocean studies (+1.5 to +3.1 ‰; for δ³⁰Si_{Si(OH)₄}; -0.5 to +2.6 ‰ for δ³⁰Si_{bSiO₂}) (Varela et al., 2004; Cardinal et al., 2005, 2007; Fripiat et al., 2011a; Cavagna et al., 2011). For bSiO₂, the previous studies are restricted to the Seasonal Ice Zone (SIZ), AZ, and PFZ. It is interesting to note that the range of δ³⁰Si_{bSiO₂} values are roughly two times those of δ³⁰Si_{Si(OH)₄} (Fig. 3a). A clear trend between Δ³⁰Si and silicic acid concentration is observed in the mixed layer (Fig. 3b, non-linear regression using a power function, Δ³⁰Si = 0.40*[Si(OH)₄]^{0.36}, R² = 0.61, p-value < 0.01), similar to the one obtained with sponge spicules (Wille et al., 2010; Hendry and Robinson, 2012).

The water column profiles of Si(OH)₄ and δ³⁰Si_{Si(OH)₄} clearly display ³⁰Si enrichment and Si(OH)₄ depletion

Table 1. Si(OH)₄ and bSiO₂ concentrations and isotopic compositions. Only the standard deviations for duplicates are shown. Bold numbers represents samples from in situ pumps. The mixed layer depth (MLD) has been determined using a combination of threshold density/temperature criterions relative to 10m (ΔT °C = 0.2 °C; $\Delta\sigma = 0.03$ and 0.125 kg m⁻³; De Boyer Montégut et al., 2004). $\delta^{30}\text{Si-Si(OH)}_4$ data are from Fripiat et al. (2011b).

Station	Depth m	Si(OH) ₄ μmol l ⁻¹	$\delta^{30}\text{Si-Si(OH)}_4$ ‰ ± sd	Depth m	bSiO ₂ μmol l ⁻¹	$\delta^{30}\text{Si-bSiO}_2$ ‰ ± sd
Super 5	29	65.2	1.85 ± 0.03	30	0.36	0.28 ± 0.04
16 March 2008	88	64.2	2.00	88	1.23	0.28
00.02° E–57.32° S	151	84.1	1.50 ± 0.03	140	0.12	-0.40 ± 0.10
MLD = 58–115 m	199	96.2	1.35 ± 0.01	250	0.23	0.16 ± 0.01
	251	101.5	1.37 ± 0.05	400	0.18	0.27 ± 0.03
	299	104.2	1.41 ± 0.05	700	0.10	0.26 ± 0.02
	400	110.5	1.44 ± 0.36	1800	0.05	0.68 ± 0.11
	499	117.2	1.47	2500	0.04	0.65 ± 0.15
	700	116.5	1.44 ± 0.20	3200	0.04	0.72 ± 0.12
	1003	120.0	1.27	3874	0.03	0.92 ± 0.08
	1499	119.1	1.13			
	1999	116.6	1.12 ± 0.06			
	2500	119.7	1.43			
	3000	117.2	1.11 ± 0.08			
	3979	118.8	1.08			
Large 7	4	50.7	1.95	4	0.40	0.42 ± 0.11
14 March 2008	39	n.a.	n.a.	39	0.72	0.53 ± 0.04
00.03° E–55.14° S	80	50.0	1.78 ± 0.07	80	0.38	0.50
MLD = 100–101 m						
Super 4	11	22.2	2.42	11	0.31	1.38
11 March 2008	41	n.a.	n.a.	41	0.39	1.28
00.03° E–51.87° S	60	n.a.	n.a.	60	0.30	1.37 ± 0.10
MLD = 134–140 m	79	22.3	2.37 ± 0.06	79	0.29	1.18
	100	21.9	2.16 ± 0.08	100	n.a.	n.a.
	149	30.5	2.03	170	0.37	1.41 ± 0.06
	199	63.2	1.48 ± 0.00	260	0.28	1.36 ± 0.06
	300	86.0	1.41 ± 0.09	420	0.14	1.34 ± 0.21
	398	87.6	1.58	749	0.13	1.32 ± 0.10
	553	88.9	1.37 ± 0.16	1128	0.14	1.30 ± 0.18
	704	90.1	1.53	1695	0.03	1.24 ± 0.15
	1201	101.9	1.35	2488	0.11	1.42 ± 0.20
	1601	109.5	1.47			
	2001	121.7	1.30			
	2551	131.2	1.13			
Large 6	3	4.0	2.47	3	0.13	
8 March 2008	48	4.0	2.48	48	0.31	2.00 ± 0.02*
01.18° E–50.22° S	98	5.1	2.47	98	0.32	
MLD = 80–88						
Super 3	5	2.1	3.24 ± 0.01	5	0.13	
6 March 2008	41	2.2	2.85	41	0.32	2.50 ± 0.06*
4.23° E–47.33° S	79	2.2	2.36	79	0.06	
MLD = 82–88 m	100	4.2	2.57 ± 0.19	100	0.10	
	149	9.2	2.30	600	0.10	2.30 ± 0.03
	200	10.4	2.42	1068	0.05	2.29 ± 0.06
	401	25.3	1.93 ± 0.35			
	600	1.67	1.67			
	1002	1.43	1.43			
Super 2	10	0.6	3.24	70	0.04	2.03 ± 0.18
27 February 2008	40	1.0	n.a.			
8.56° E–42.28° S						
MLD = 23–39 m						
Super 1	4	2.2	3.04 ± 0.24	4	0.08	
21 February 2008	25	2.3	2.89 ± 0.07	25	0.28	1.30 ± 0.10*
13.10° E–36.45° S	50	n.a.	n.a.	50	0.22	
MLD = 13–19 m						

* Samples in the mixed layer have been merged for Si-isotopic analysis.

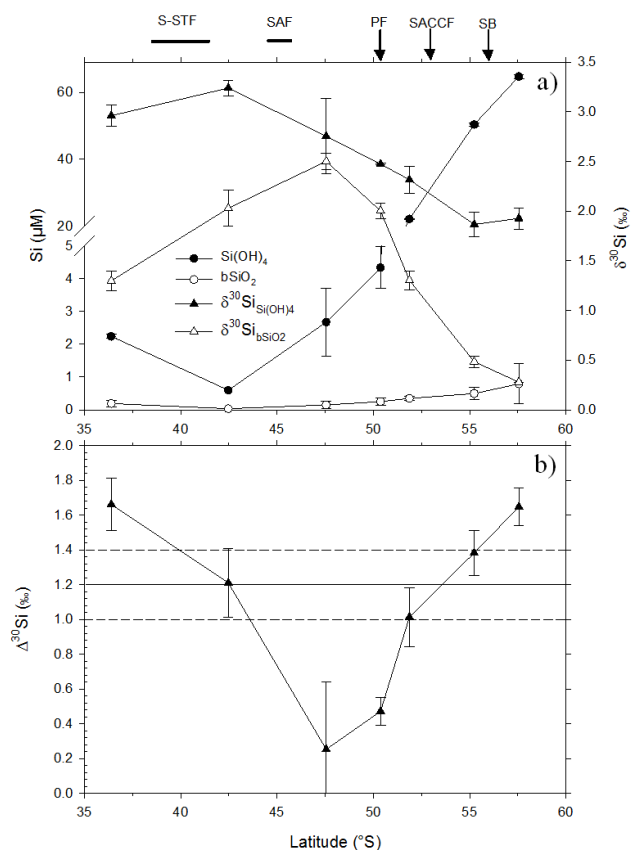


Fig. 2. (a) Latitudinal variation in the mixed layer (mean \pm sd) for concentrations and isotopic composition. The dots represent the concentration and the triangles the isotopic compositions, respectively, black and white for Si(OH)₄ and bSiO₂. Panel (b) shows the latitudinal variation of apparent fractionation factor ($\Delta^{30}\text{Si} = \delta^{30}\text{Si}_{\text{Si(OH)}_4} - \delta^{30}\text{Si}_{\text{bSiO}_2}$). The horizontal lines represent the compiled average ACC fractionation factor ($^{-30}\epsilon = 1.2 \pm 0.2$ ‰) given in Fripiat et al. (2011a). Arrows and lines represent the positions of the front at the time of sampling.

towards the surface (Table 1; see Fripiat et al., 2011b for a more complete discussion on water-column profiles of $\delta^{30}\text{Si}_{\text{Si(OH)}_4}$), similar to previous studies (e.g. Cardinal et al., 2005). While biogenic silica concentrations exhibit an inverse pattern (Fig. 4a, c), $\delta^{30}\text{Si}_{\text{bSiO}_2}$ remains constant with depth in the AZ and in the upper ~ 1000 m of the northern WG and the PFZ (Fig. 4b, d). In the WG, $\delta^{30}\text{Si}_{\text{bSiO}_2}$ decreases just below the mixed layer, coinciding with a decrease in bSiO₂ and $\delta^{30}\text{Si}_{\text{Si(OH)}_4}$, while below 1000 m $\delta^{30}\text{Si}_{\text{bSiO}_2}$ increases.

4 Discussion

Proxies can be influenced by multiple factors, and the sensitivity of a specific proxy to these factors likely changes in space and time. In the following sections, we discuss the processes controlling the origin of the isotopic composition

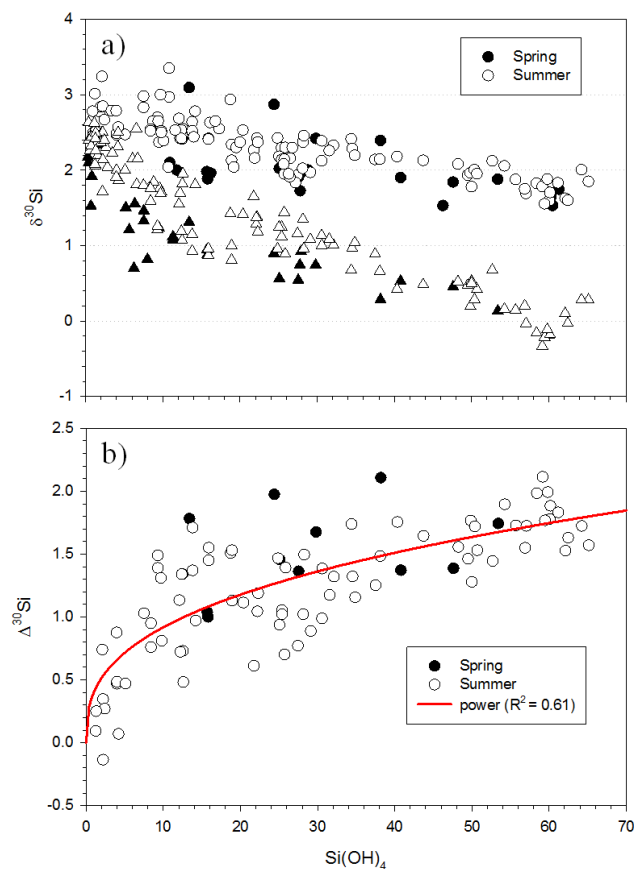


Fig. 3. (a) Mixed layer $\delta^{30}\text{Si}$ (both for Si(OH)₄ and bSiO₂) vs. [Si(OH)₄] for the SIZ-WG, AZ, and PFZ. Triangles refer to isotopic composition of bSiO₂ and circles to Si(OH)₄. Filled symbols refer to spring data and open symbols to summer data. (b) Mixed layer $\Delta^{30}\text{Si}$ vs. [Si(OH)₄] for the SIZ-WG, AZ, and PFZ (Varela et al., 2004; Cardinal et al., 2005, 2007; Fripiat et al., 2011a, b; Cavagna et al., 2011; this study). Filled symbols refer to spring data and open symbols to summer data. In (b), a non-linear regression (power function) fitting the data is shown ($R^2 = 0.61$, p -value < 0.01).

of biogenic silica in the mixed layer (Sect. 4.1) and subsequently the fate of the isotopic composition of biogenic silica across the water column (Sect. 4.2). The link between the isotopic composition and the relative silicic acid utilization in the surface waters will be investigated.

4.1 Origin of the mixed layer biogenic silica isotopic composition

Two models are commonly applied to describe Si-isotopic fractionation during Si-consumption by diatoms, directly linking the $\delta^{30}\text{Si}$ to the relative utilisation of Si(OH)₄. If a pool of silicic acid is consumed without resupply during the consumption process and with a constant fractionation factor ($^{30}\epsilon$), then the isotopic evolution of the remaining Si(OH)₄, instantaneous bSiO₂ (hereafter referred to with the superscript “inst”), and accumulated bSiO₂ (hereafter referred to

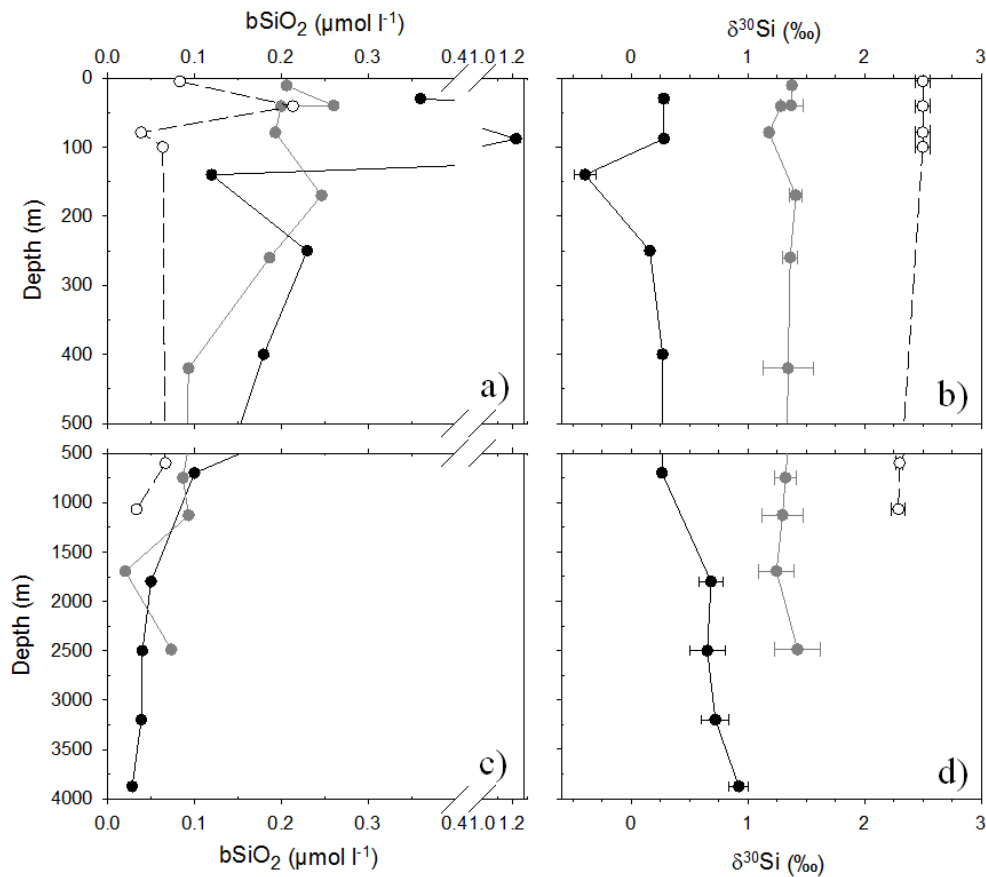


Fig. 4. Vertical profiles for the stations in the Weddell Gyre (filled black circles), the Antarctic Zone (filled gray circles), and the Polar Front Zone (empty black circles), respectively, super 5, super 4 and super 3. **(a)** and **(c)** bSiO_2 concentration profiles. **(b)** and **(d)** $\delta^{30}\text{Si}$ profiles of bSiO_2 .

with the superscript “acc”) should follow the Rayleigh fractionation equations (De La Rocha et al., 1997):

$$\delta^{30}\text{Si}_{\text{Si}(\text{OH})_4[t]} = \delta^{30}\text{Si}_{\text{Si}(\text{OH})_4[t_0]} + {}^{30}\varepsilon \cdot \ln(f) \quad (1)$$

$$\delta^{30}\text{Si}_{\text{bSiO}_2[t]}^{\text{Inst}} = \delta^{30}\text{Si}_{\text{Si}(\text{OH})_4[t]} + {}^{30}\varepsilon \quad (2)$$

$$\delta^{30}\text{Si}_{\text{bSiO}_2[t]}^{\text{Acc}} = \delta^{30}\text{Si}_{\text{Si}(\text{OH})_4[t_0]} - {}^{30}\varepsilon \cdot \frac{f \cdot \ln(f)}{1-f} \quad (3)$$

where f is the $[\text{Si}(\text{OH})_4]_t$: $[\text{Si}(\text{OH})_4]_{t_0}$ ratio. The subscript “[t]” is the sampling time and “[t_0]” the initial time. Note that in such a system, the apparent fractionation factor ($\Delta^{30}\text{Si} = \delta^{30}\text{Si}_{\text{Si}(\text{OH})_4} - \delta^{30}\text{Si}_{\text{bSiO}_2}$) is either constant (Eq. (2) for instantaneous bSiO_2) or increases (Eq. (3) for accumulated bSiO_2) with silicic acid consumption.

The alternative to this closed system is the open, flow-through system, where the substrate is continuously supplied where the reaction continuously occurs at the same rate (also

referred to as steady state system, Fry, 2006).

$$\delta^{30}\text{Si}_{\text{Si}(\text{OH})_4[t]} = \delta^{30}\text{Si}_{\text{Si}(\text{OH})_4[t_0]} - {}^{30}\varepsilon \cdot (1-f) \quad (4)$$

$$\delta^{30}\text{Si}_{\text{bSiO}_2[t]} = \delta^{30}\text{Si}_{\text{Si}(\text{OH})_4[t_0]} + {}^{30}\varepsilon \cdot f = \delta^{30}\text{Si}_{\text{Si}(\text{OH})_4[t]} + {}^{30}\varepsilon \quad (5)$$

The steady state system assumes equilibrium and does not represent a temporal evolution. Conceptually, for the Southern Ocean this poses a problem, since Si-depletion is observed in the mixed layer as a result of varying growth and export of diatoms (Brzezinski et al., 2001). Note that in such a system, $\Delta^{30}\text{Si}$ is constant (Eq. 5) along with silicic acid consumption.

Neither of these models can explain the large variability that is observed in $\delta^{30}\text{Si}_{\text{bSiO}_2}$ values compared to $\delta^{30}\text{Si}_{\text{Si}(\text{OH})_4}$ (Fig. 3a), and therefore the associated low and high $\Delta^{30}\text{Si}$ (Fig. 3b). These model failures may result from the non-validity of one of the underlying model assumptions. We will investigate the impact of the following assumptions: (1) the fractionation factor is constant all along the seasonal $\text{Si}(\text{OH})_4$ depletion (Sect. 4.1.1), and (2) the seasonal expression of the different isotopic effects is under-resolved in the model equations (Sects. 4.1.2 and 4.1.3).

4.1.1 Variability in the fractionation factor

The mean apparent fractionation factor ($\Delta^{30}\text{Si} = \delta^{30}\text{Si}_{\text{Si}(\text{OH})_4} - \delta^{30}\text{Si}_{\text{bSiO}_2}$) south of the Subantarctic Front is $1.3 \pm 0.5 \text{‰}$ ($n = 90$; Fig. 3b). Assuming that there is no accumulation of biogenic silica in the mixed layer, $\Delta^{30}\text{Si}$ should be equal, but with a opposite sign, to the fractionation factor associated with biogenic silica production ($^{30}\epsilon$; Eqs. 2 and 5). The latter is not significantly different from the in vitro $^{30}\epsilon$ estimation with temperate diatom species ($-1.1 \pm 0.4 \text{‰}$; De La Rocha et al., 1997), the in situ $^{30}\epsilon$ compilation in the ACC ($-1.2 \pm 0.2 \text{‰}$; Fripiat et al., 2011a), or the different $^{30}\epsilon$ estimations reported in other oceanic regions (De La Rocha et al., 2000; Reynolds et al., 2006; Beucher et al., 2008). Despite that these different estimations are roughly centered on the in vitro estimations from De La Rocha et al. (1997; $-1.1 \pm 0.4 \text{‰}$), the large dispersion (from -0.4 to -2.0‰) suggests that the constancy of the fractionation factor can be discussed.

In the Southern Ocean, a clear trend between $\Delta^{30}\text{Si}$ and silicic acid concentration is observed in the mixed layer (Fig. 3b). If indeed $\Delta^{30}\text{Si}$ can be taken as an estimate of $-^{30}\epsilon$, then such dataset can result from a causal link between silicic acid concentration and the extent of Si-isotopic fractionation. However, the physiological mechanisms leading to the fractionation of Si-isotopes by diatoms are still poorly assessed and understood. Several mechanisms can induce a variation in $^{30}\epsilon$: (1) an inter-specific variation, and an impact of (2) the Si-cellular metabolic balance and (3) the bSiO_2 dissolution. In the following, these three points will be discussed:

1. Recently, Sutton et al. (2011) suggested an inter-specific variation in Southern Ocean diatoms based on in vitro incubations. Such observations are not in agreement with De La Rocha et al. (1997)'s hypothesis showing no inter-specific variation with temperate diatom species. Despite of being very hypothetical, different diatom species adapted to different silicic acid availability, together with different fractionation factors, could explain the observed relationship between $\Delta^{30}\text{Si}$ and silicic acid concentration (Fig. 3b).
2. If the main Si-isotopic fractionation is occurring within the diatom cell (e.g. during the polymerization of biogenic silica), the isotopic fractionation will be more expressed when the efflux:influx ratio increases (Milligan et al., 2004), as expressed in the following equation:

$$^{30}\epsilon_{\text{net}} = ^{30}\epsilon_{\text{inf}} + \frac{\rho_{\text{eff}}}{\rho_{\text{inf}}} \cdot \left(^{30}\epsilon_{\text{poly}} - ^{30}\epsilon_{\text{eff}} \right) \quad (6)$$

where the subscript “Inf” (=influx) is the transport rate across the plasmalemma from outside to inside the cell; “poly” (=polymerisation) the rate of frustule formation inside the silicon vesicle deposit (SDV); “Eff” (efflux)

the transport rate across the plasmalemma from inside to outside the cell.

The efflux has never been measured in situ, precluding any comparison with oceanic data. It has been suggested to be a consequence of transient imbalances between uptake and polymerization caused by a level of transport that exceeds the capacity of intracellular silicon-binding component (Martin-Jézéquel et al., 2000; Thamtrakoln and Hildebrand, 2008). Average concentration of $\text{Si}(\text{OH})_4$ in most of the ocean's euphotic zone is less than $10 \mu\text{mol Si l}^{-1}$ (Garcia et al., 2005). $\text{Si}(\text{OH})_4$ uptake by field assemblages would mostly be directly controlled by silicic acid transporters (SITs), which would minimize the associated costs of excess uptake and efflux (Thamtrakoln and Hildebrand, 2008). On the other side, our data are all from the Southern Ocean where high $\text{Si}(\text{OH})_4$ concentrations prevail. These concentrations are expected to be in a range favoring diffusion mediated uptake, incidentally increasing the probability of efflux to occur (Thamtrakoln and Hildebrand, 2008).

If (i) the isotopic fractionation associated with the polymerization is larger than the ones occurring during both influx and efflux, and (ii) the efflux:influx ratio is proportional to the silicic acid concentration, then the isotopic fractionation associated with biogenic silica production should increase together with silicic acid concentration (Eq. 6), as observed in Fig. 3b.

It seems unlikely that (1) and (2) are sufficient to fully explain the observed trend in Fig. 3b since the $\Delta^{30}\text{Si}$ Front is approaching zero at low concentrations. Indeed, it would suggest that either some diatom species or diatoms growing in environmental conditions unfavorable to efflux, specifically low $\text{Si}(\text{OH})_4$ concentration (Thamtrakoln and Hildebrand, 2008), do not fractionate the silicon isotopes. For (2), it implies that the fractionation associated with influx is 0‰ (Eq. 6). This is in disagreement with the observations in other oceanic regions or with in vitro incubations: (i) $\Delta^{30}\text{Si}$ north of the Subantarctic Front is larger than 1‰ despite low silicic acid concentrations, (ii) an imprint from isotopic fractionation is clearly observed on the surface $\delta^{30}\text{Si}_{\text{Si}(\text{OH})_4}$ distribution in every oceanic areas measured to date, including the ones where low silicic acid concentration prevails all year (De La Rocha et al., 2000; Cardinal et al., 2005; Reynolds et al., 2006; Beucher et al., 2008; de Souza, 2011; this study), and (iii) Milligan et al. (2004) with in vitro incubations measured an isotopic fractionation ($^{30}\epsilon \approx -1.6 \text{‰}$) which seemed not to be affected by the efflux:influx ratio and requiring a significant isotopic fractionation during influx.

3. Demarest et al. (2009) report that during dissolution of biogenic silica, light Si-isotopes are released preferentially with a fractionation factor ($^{30}\epsilon_{\text{diss}}$) estimated to be at $-0.55 \pm 0.05 \text{‰}$. This effect partly counteracts the

fractionation occurring during bSiO₂ production. By increasing the mixed layer $D:P$ ratio, the net fractionation ($^{30}\epsilon_{\text{net}}$) factor associated with net bSiO₂ production (=net P) would be dampened as follows (Demarest et al., 2009):

$$^{30}\epsilon_{\text{net}} = ^{30}\epsilon_{\text{upt}} + \frac{D}{P} \cdot ^{30}\epsilon_{\text{diss}}. \quad (7)$$

Brzezinski et al. (2003) observed a shift in the mode of functioning of the surface silicon cycle, from bSiO₂ dissolution supporting a small fraction of gross bSiO₂ production during diatom bloom to bSiO₂ dissolution supporting the majority of gross bSiO₂ production during non-bloom periods when silica production is low. Applying strictly the Eq. (7), such isotopic effect could explain at the maximum only 0.55‰ of the variation observed in Fig. 3b (being $\approx 2\%$).

To conclude this section, the seasonal and spatial variations of the fractionation factor are not sufficient to fully explain the observed trends between $\Delta^{30}\text{Si}$ and silicic acid concentration (Fig. 3b). Additional processes are required. In the following (Sects. 4.1.2 and 4.1.3), the seasonal variation in the expression of the different isotopic effects (dissolution and mixing) will be discussed together with induced disequilibria between biogenic silica and silicic acid. A box model based on conservation of Si mass and isotopic composition during the productive period for the mixed layer is implemented in Sect. 4.1.2. The different hypotheses are tested in the Sect. 4.1.3.

4.1.2 Model description

Figure 5a shows the model structure with the associated fluxes: Si(OH)₄ supply, bSiO₂ production, dissolution, and export. The box represents a 100 m deep mixed layer and has two compartments: the Si(OH)₄ and bSiO₂ pools. South of Africa, Faure et al. (2011) estimated a mean mixed layer depth of ± 100 m for the productive period across the ACC (including the AZ, PFZ, and SAZ), in agreement with our assumption. The accumulated exported bSiO₂ is also simulated, to assess the effects of seasonal changes upon the isotopic composition of exported $\delta^{30}\text{Si}_{\text{bSiO}_2}$, i.e. the variable measured in paleoceanography. Here, the productive period is assumed to have a duration of 90 days, with the productive peak roughly centered in December, as shown by chl *a*/POC satellite data and modeling studies (Pondaven et al., 1998; Moore and Abbot, 2000; Allison et al., 2010). Across the BGH transect which took place in late summer 2008, mixed layer silicon properties can be considered as representative of final summer conditions. This is supported by Si-uptake in the mixed layer being in the lower range of published values, $0.02 \pm 0.03 \mu\text{mol Si l}^{-1} \text{d}^{-1}$ (mean Si-uptake from ^{30}Si tracer incubations for the BGH transect, $n = 27$ samples, each incubated as triplicates; Fripiat, 2010). This indicates that the end of the diatoms' growth period has been reached. The

PFZ station was chosen as a case study for this simulation as both (1) near complete Si-depletion (Fig. 2a) and (2) low $\Delta^{30}\text{Si}$ are observed (Fig. 2b). The model initial conditions (i.e. before the start of the growth season) are set using the Si-characteristics of subsurface waters in the PFZ by Fripiat et al. (2011b; median for the halocline in the PFZ, see Table 2 for the initial and final conditions), argued here to represent the winter mixed layer (Tomczak and Godfrey, 2001).

The vertical supply of Si to the mixed layer is described either by a constant flux (zero order equation) or by 10 discrete mixing events (every 9 days) supplying an equal quantity of Si into the mixed layer. The gross uptake rate of Si (=gross bSiO₂ production) during the growth period is described by a Michaelis-Menten saturation function:

$$V_{\text{Si}[t]} = \frac{V_{\text{max}} \cdot [\text{Si}(\text{OH})_4]}{k_{\text{Si}} + [\text{Si}(\text{OH})_4]} \quad (8)$$

where V_{Si} is the specific uptake rate (d^{-1}), V_{max} (d^{-1}) the maximum specific uptake rate, and k_{Si} ($\mu\text{mol l}^{-1}$) the Si(OH)₄ concentration when $V_{\text{Si}} = V_{\text{max}}/2$. In the ACC silicon uptake is well described using the Michaelis-Menten relationship (Pondaven et al., 1998, 2000). The integrated (mixed layer depth = MLD) gross bSiO₂ production (P ; $\text{mmol m}^{-2} \text{d}^{-1}$) is described as follows:

$$P = \int_0^{\text{MLD}} V_{\text{Si}[t]} \cdot [\text{bSiO}_2^{\text{ML}}]_{[t]} \cdot dz. \quad (9)$$

The “ML” superscript indicates mixed layer biogenic silica (being the initial bSiO₂ + net bSiO₂ production, at each time step), which is a mixture of detrital and living diatom cells (Krause et al., 2010). The bSiO₂ export (= E , $\text{mmol m}^{-2} \text{d}^{-1}$) is described by a first order equation (first order constant = k_{export}):

$$E = \int_0^{\text{MLD}} k_{\text{export}} \cdot [\text{bSiO}_2^{\text{ML}}]_{[t]} \cdot dz. \quad (10)$$

The bSiO₂ dissolution:production ($D:P$) ratio is assumed to increase linearly (from 0.0 to 1.0 over the expected range Brzezinski et al., 2003; Fig. 5d):

$$\frac{d\left(\frac{D}{P}\right)}{dt} = \frac{1}{N_{\text{season}}} \quad (11)$$

where N is the number of days. The model could be oversimplified as in the ACC, $D:P$ ratios exceeding 1 have already been documented at the end of summer (Beucher et al., 2004; Fripiat et al., 2011c). This has been explained by an accumulation of detrital diatom cells in the mixed layer after a productive period.

The fractionation factor associated with net bSiO₂ production is determined following equation 7 where $^{30}\epsilon_{\text{upt}}$ has

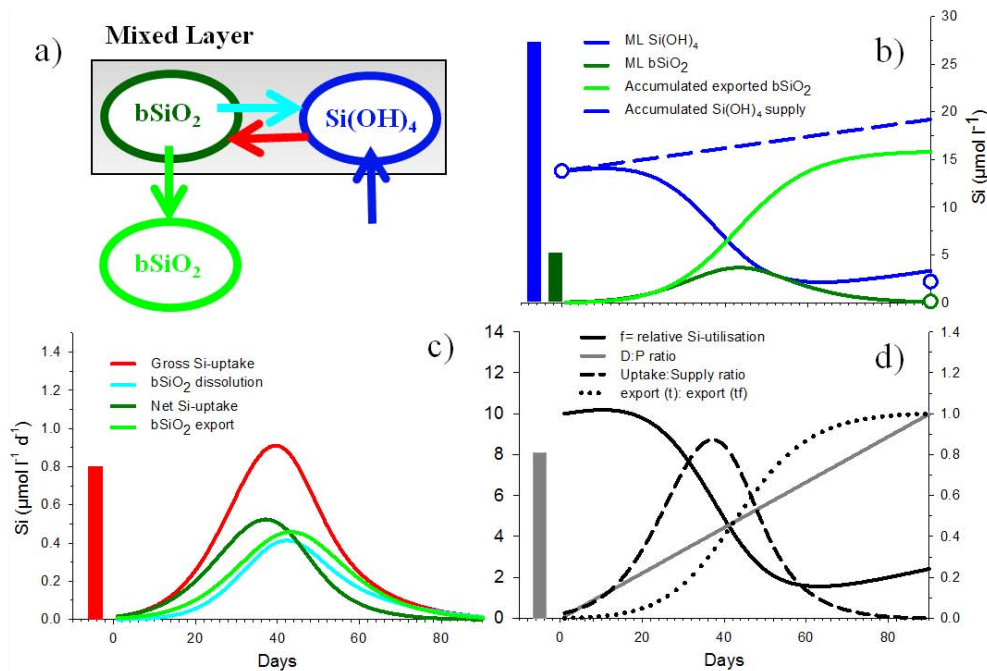


Fig. 5. (a) Schematic representation of the box model (=100 m deep mixed layer). Round boxes represent pools of silicic acid in the mixed layer (blue), biogenic silica in the mixed layer (dark green), and accumulated exported biogenic silica below the mixed layer (light green). Arrows stand for processes exchanging Si between the pools: gross Si-uptake (red arrow), bSiO₂ dissolution (cyan arrow), bSiO₂ export (green arrow), and vertical Si(OH)₄ supply (blue arrow). (b, c, d) Model outputs for the PFZ simulation. Panel (b) simulated concentrations of Si(OH)₄ and bSiO₂ in the mixed layer, accumulated exported bSiO₂, and accumulated Si-supply to the mixed layer. The initial and final estimations are indicated using empty dots with the corresponding colors (Table 2). Panel (c) simulated gross Si-uptake, bSiO₂ dissolution, net Si-uptake, and bSiO₂ export. (d) Simulated Si-uptake:supply ratio (left y-axis), relative Si(OH)₄ utilization (right y-axis), export(t):export(tf) ratio (right y-axis) and D:P ratio (right y-axis). $V_{max} = 0.41$, $K_{Si} = 4 \mu\text{mol l}^{-1}$, $k_{\text{export}} = 0.13$, and subsurface Si(OH)₄ (right y-axis) supply = 540 mmol m^{-2} . Brzezinski et al. (2001) is the only time series across the whole productive period describing the silicon biogeochemical dynamics in the Polar Front Zone in the Pacific Sector (PFZ between 61° S and 52° S). The vertical bars in the (a), (b), and (c) represent the range for silicic acid and biogenic silica concentrations (respectively the blue and green vertical bars in b), the gross Si-uptake (red vertical bar in c), and the D:P ratio (gray vertical bar in d).

been compiled for the ACC at $-1.2 \pm 0.2 \text{ ‰}$ in Fripiat et al. (2011a) and $^{30}\epsilon_{\text{diss}}$ has been measured experimentally at $-0.55 \pm 0.05 \text{ ‰}$ by Demarest et al. (2009). Assuming a D:P ratio evolution as described in Eq. (7), the $^{30}\epsilon_{\text{net}}$ at the beginning of the productive period will be equal to the $^{30}\epsilon_{\text{upt}}$ (-1.2 ‰) and decrease to -0.65 ‰ ($^{30}\epsilon_{\text{upt}} - ^{30}\epsilon_{\text{diss}}$) at the end, in agreement with Eq. (11). In the following discussion, model results with and without an isotopic fractionation during bSiO₂ dissolution will be compared. Given the lack of information on the role Si-efflux on isotopic fractionation, we decided to not include Eq. (6) in this model.

Using the above parameters and assuming the silicic acid pool is homogeneous and is fed with silicic acid of constant $\delta^{30}\text{Si}$ composition, the seasonal evolution can be described as follows:

$$\frac{d(m_{\text{Si(OH)}_4})}{dt} = F_{\text{supply}} + \left(\frac{D}{P} - 1\right) \cdot P_{[t]} = F_{\text{supply}} - \text{net}P_{[t]} \quad (12)$$

$$m_{\text{Si(OH)}_4} \cdot \frac{d(\delta^{30}\text{Si}_{\text{Si(OH)}_4})}{dt} = F_{\text{supply}} \cdot \delta^{30}\text{Si}_{\text{supply}} - ^{30}\epsilon_{[t]} \cdot \text{net}P_{[t]} \quad (13)$$

where m is the molar quantity of silicon (mmol m^{-2}) and F_{supply} the Si(OH)₄ supply ($\text{mmol m}^{-2} \text{ d}^{-1}$).

The biogenic silica pools are described as follows:

$$\frac{d(m_{\text{bSiO}_2}^{\text{ML}})}{dt} = \text{net}P_{[t]} - E_{[t]} \quad (14)$$

$$m_{\text{bSiO}_2}^{\text{ML}} \cdot \frac{d(\delta^{30}\text{Si}_{\text{bSiO}_2}^{\text{ML}})}{dt} = \text{net}P_{[t]} \cdot (\delta^{30}\text{Si}_{\text{Si(OH)}_4[t]} + ^{30}\epsilon_{[t]}) - E_{[t]} \cdot \delta^{30}\text{Si}_{\text{bSiO}_2[t]}^{\text{ML}} \quad (15)$$

$$\frac{d(m_{\text{bSiO}_2}^{\text{export}})}{dt} = E_{[t]} \quad (16)$$

$$m_{\text{bSiO}_2}^{\text{export}} \cdot \frac{d(\delta^{30}\text{Si}_{\text{bSiO}_2}^{\text{export}})}{dt} = E_{[t]} \cdot \delta^{30}\text{Si}_{\text{bSiO}_2[t]}^{\text{ML}} \quad (17)$$

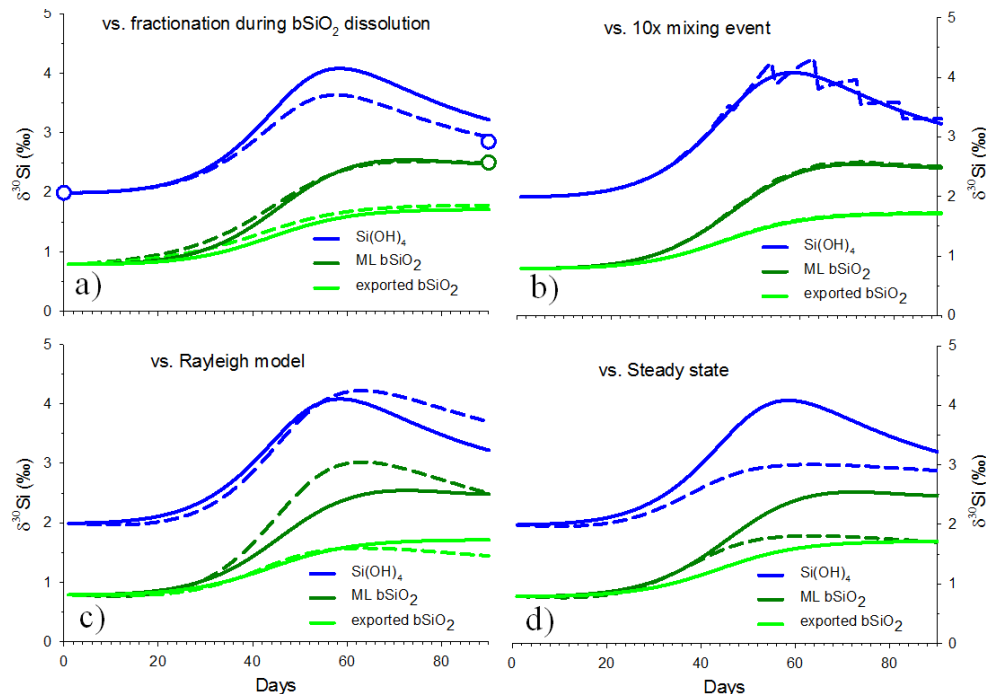


Fig. 6. Model outputs for the case study station in the PFZ. Panel (a) simulated $\delta^{30}\text{Si}$ values for $\text{Si}(\text{OH})_4$, ML bSiO_2 , exported bSiO_2 without (full lines) and with (dashed lines) bSiO_2 dissolution isotopic fractionation ($^{30}\epsilon = -0.55\text{‰}$). The initial and final estimations are indicated using empty dots with the corresponding colors (Table 2). Panel (b) simulated $\delta^{30}\text{Si}$ values for $\text{Si}(\text{OH})_4$, ML bSiO_2 , exported bSiO_2 with continuous Si-supply (full lines) and 10 mixing events (dashed lines). (c) Comparison between the simulated $\delta^{30}\text{Si}$ values (full lines) and Rayleigh model outputs (dashed line). For the Rayleigh model, ML bSiO_2 is the instantaneous product (*sensu* Rayleigh) and exported bSiO_2 the accumulated product (*sensu* Rayleigh). (d) Comparison between the simulated $\delta^{30}\text{Si}$ values (full lines) and the Steady State model outputs (dashed lines).

Superscript “export” is the biogenic silica exported out of the mixed layer assuming that the exported fraction of biogenic silica has an isotopic composition similar to the one in the mixed layer. This could be an oversimplification since Krause et al. (2010) suggested that for the Equatorial Pacific exported biogenic silica can be composed of mainly detrital diatom cells.

Small errors arise for both mixing and fractionation when the δ notation is used instead of isotopic ratios. However, for δ values close to 0, as is the case for Si isotopic system, these sources of errors are negligible (Fry, 2006). The aim here is to assess, with the current knowledge of the Si-biogeochemical dynamic, how the seasonal variability of the different isotopic effects potentially affects the mass and isotopic balances. This is of crucial importance for palaeoceanographic reconstructions of past ocean conditions. This approach should not be taken as an attempt to quantify fluxes (uptake, dissolution, export, and $\text{Si}(\text{OH})_4$ supply) or to constrain the complexity of the seasonal silicon cycle.

4.1.3 Model outputs

With the current knowledge of Si-biogeochemical dynamic in the Southern Ocean, the model seems to adequately repro-

duce the seasonal evolution of silicic acid and biogenic silica concentrations in the PFZ mixed layer (Fig. 5; Brzezinski et al., 2001; Quéguiner and Brzezinski, 2002). The integrated Si-uptake of $1.6 \text{ mol Si m}^{-2} \text{ yr}^{-1}$ fits relatively well with the mean expected values in the Polar Front Zone, $1.2 \text{ mol Si m}^{-2} \text{ yr}^{-1}$ (Fripiat et al., 2011c).

The simulated isotopic trends for $\delta^{30}\text{Si}_{\text{bSiO}_2}$ differ from the $\delta^{30}\text{Si}_{\text{Si}(\text{OH})_4}$ trends, especially at the end of the productive period (Fig. 6a). In the PFZ the Si uptake:supply ratio is high at the beginning of the growth period, and, consequently, the $\delta^{30}\text{Si}_{\text{Si}(\text{OH})_4}$ and $\delta^{30}\text{Si}_{\text{bSiO}_2}$ evolutions roughly follow a Rayleigh distillation (Figs. 5d and 6c). Note that the steady-state model is unable to reproduce the measured ML $\delta^{30}\text{Si}_{\text{bSiO}_2}$ value and is in disagreement with the present simulation (Fig. 6d). Once the silicic acid concentration has reached a level that limits Si-uptake (Eq. 8), the Si uptake:supply ratio decreases and the supply by vertical mixing of lighter Si isotopic signatures into the Si-depleted mixed layer decreases the $\delta^{30}\text{Si}_{\text{Si}(\text{OH})_4}$ (Figs. 5d and 6). The $\delta^{30}\text{Si}_{\text{bSiO}_2}$ is affected differently, since both new and preceding diatom generations set the ML $\delta^{30}\text{Si}_{\text{bSiO}_2}$ (Eq. 14), especially at the end of the productive period when bSiO_2 production is low. Such process decreases the $\Delta^{30}\text{Si}$ and is consistent with our observations (Figs. 2b, 3b, and 7a). The

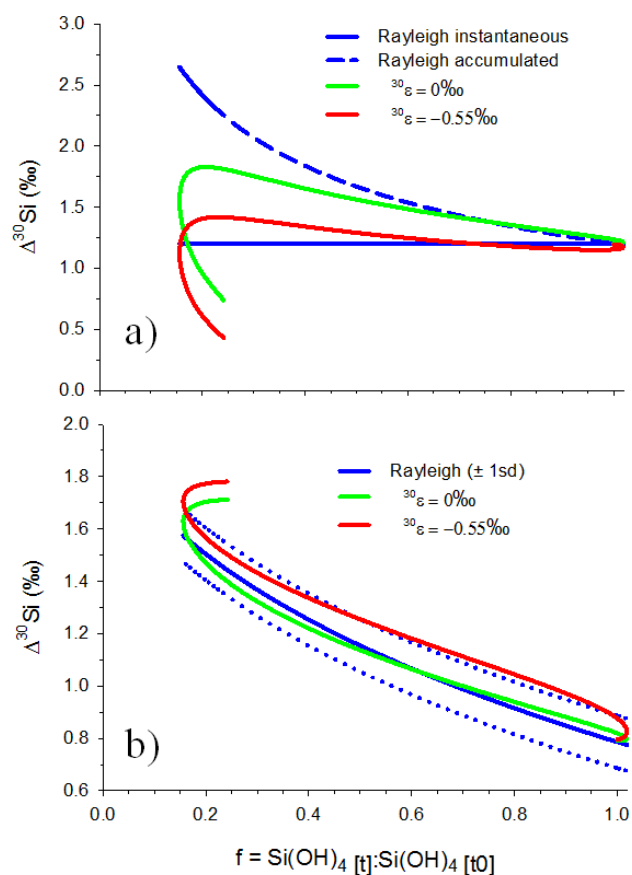


Fig. 7. (a) Simulated $\Delta^{30}\text{Si}$ ($=\delta^{30}\text{Si}_{\text{Si(OH)}_4}$ – mixed layer $\delta^{30}\text{Si}_{\text{bSiO}_2}$) vs. relative Si-utilisation in the mixed layer ($=[\text{Si(OH)}_4]_{(t)}:[\text{Si(OH)}_4]_{(t_0)}$) without (green line) and with (red line) an isotopic fractionation during bSiO₂ dissolution. The isotopic difference between the Rayleigh $\delta^{30}\text{Si}_{\text{Si(OH)}_4}$ and either Rayleigh instantaneous $\delta^{30}\text{Si}_{\text{bSiO}_2}$ (full blue line) or Rayleigh accumulated $\delta^{30}\text{Si}_{\text{bSiO}_2}$ (dashed blue line) are also shown. (b) Simulated relationship between accumulated exported $\delta^{30}\text{Si}_{\text{bSiO}_2}$ and relative Si-utilisation in the mixed layer without (green line) and with (red line) an isotopic fractionation during bSiO₂ dissolution. The relationship with the Rayleigh accumulated $\delta^{30}\text{Si}_{\text{bSiO}_2}$ (full blue line; 1 standard deviation = dashed blue lines) is also shown to compare.

exported bSiO₂ out of the mixed layer fits with an accumulation product (sensu Rayleigh; Fig. 6c). This is seen from (1) Fig. 5d showing that $\approx 85\%$ of the export of biogenic silica occurs before the decreasing trend in $\delta^{30}\text{Si}_{\text{Si(OH)}_4}$ and, incidentally, the exported $\delta^{30}\text{Si}_{\text{bSiO}_2}$ is not significantly affected by processes occurring at the end of the productive period when the Si uptake:supply ratio is low; (2) Fig. 7b showing the relationships (non-significantly different) between the simulated exported $\delta^{30}\text{Si}_{\text{bSiO}_2}$ and the accumulated biogenic silica (sensu Rayleigh) with relative silicon utilisation ($=f$). Note that this simulation is already sufficient to explain partly the measured range in the $\Delta^{30}\text{Si}$ (Figs. 3 and 7a).

Impact of isotopic fractionation during dissolution – by adding the isotopic fractionation of bSiO₂ dissolution (Demarest et al., 2009), the $\delta^{30}\text{Si}_{\text{Si(OH)}_4}$ gets slightly lighter and the $\delta^{30}\text{Si}_{\text{bSiO}_2}$ slightly heavier (Fig. 6a), relative to the model runs without such fractionation, throughout the productive period, in agreement with a decrease in the net fractionation extent (Eq. 7). This process together with the low Si-uptake:supply ratio could explain the lowest $\Delta^{30}\text{Si}$ measured at the end of the productive period (Fig. 7a). The latter could bias the relationship between the exported $\delta^{30}\text{Si}_{\text{bSiO}_2}$ and the relative silicic acid utilization ($=f$). Nevertheless, such bias is lying within isotopic analytical precision (Fig. 7b) and therefore should not impact on the use and interpretation of this proxy in palaeoceanography. Furthermore, the isotopic effect of dissolution could have been over-expressed in this simulation since the $D:P$ ratio at the bSiO₂ productive peak was already high (0.4) in comparison with published values, which are close to 0.1 (Brzezinski et al., 2003).

Impact of mixing events – by switching from a continuous supply to a pulsed supply mode, consisting of 10 consecutive instantaneous mixing events, the simulation is scattered around the continuous supply with no effect on biogenic silica isotopic composition (Fig. 6b). Moreover, in reality, mixing is probably spatially heterogeneous and lateral mixing should smooth the trends toward the mean continuous supply.

As a comparison, similar simulations have been carried out in the SAZ, an area characterized, in contrast to PFZ, by a lower vertical silicic acid gradient, and in the AZ characterized by an incomplete Si depletion of the summer mixed layer (Fripiat et al., 2011b). The model's initial conditions (i.e. before the start of the growth season) are set using the Si-characteristic of subsurface waters, respectively, in the SAZ and AZ by Fripiat et al. (2011b; median for the thermocline and the halocline, see Table 2 for initial and final conditions), assumed here to represent the winter mixed layer in both areas (Tomczak and Godfrey, 2001). In order to agree as much as possible with the PFZ simulation, the Si-supply over bSiO₂ production ratio has been fit at ~ 0.3 and the $D:P$ ratio at the productive peak at ~ 0.4 . For the same relative vertical mixing, the vertical supply of light Si-isotopes at the end of summer (low Si-uptake:supply ratio) is not sufficient to lower the mixed layer $\delta^{30}\text{Si}_{\text{Si(OH)}_4}$ (Fig. 8). Therefore, it enables us to explain low $\Delta^{30}\text{Si}$ values observed only in the PFZ and PF (Fig. 2b), both characterized by heavily Si-depleted mixed layer together with a large vertical silicic acid gradient.

The relationship between the accumulated exported $\delta^{30}\text{Si}_{\text{bSiO}_2}$ and relative Si-utilisation was not significantly different from the simulation with the accumulated product (sensu Rayleigh; Fig. 7b), both with and without isotopic fractionation during bSiO₂ dissolution. Therefore, for reconstructing past Si(OH)₄ utilisation in the ACC surface waters from sedimentary $\delta^{30}\text{Si}_{\text{bSiO}_2}$ data, our results indicate that a Rayleigh bSiO₂ accumulated product model is more appropriate than a steady-state model. This mainly results from the

Table 2. Initial and final conditions, $\text{Si}(\text{OH})_4$ and bSiO_2 concentrations and isotopic compositions, for the model run (AZ, PFZ, and SAZ). Due to their asymmetric distribution, the median value has been chosen to be representative of the central values (Fripiat et al., 2011b). The initial conditions are the subsurface water in each zone: the halocline in both the AZ and PFZ, and the thermocline in the SAZ. The final conditions are the corresponding mixed layer: respectively, super stations 2, 3, and 4 for the SAZ, PFZ, and AZ (Fig. 1).

Zones	Initial conditions		Final conditions			
	$[\text{Si}(\text{OH})_4]$ $\mu\text{mol l}^{-1}$	$\delta^{30}\text{Si}_{\text{Si}(\text{OH})_4}$ ‰	$[\text{Si}(\text{OH})_4]$ $\mu\text{mol l}^{-1}$	$\delta^{30}\text{Si}_{\text{Si}(\text{OH})_4}$ ‰	bSiO_2 $\mu\text{mol l}^{-1}$	$\delta^{30}\text{Si}_{\text{bSiO}_2}$ ‰
Antarctic Zone	58.9	1.57	22.2	2.37	0.30	1.33
Polar Front Zone	13.8	1.99	2.2	2.71	0.13	2.50
Subantarctic Zone	3.1	1.96	0.8	3.24	0.04	2.03

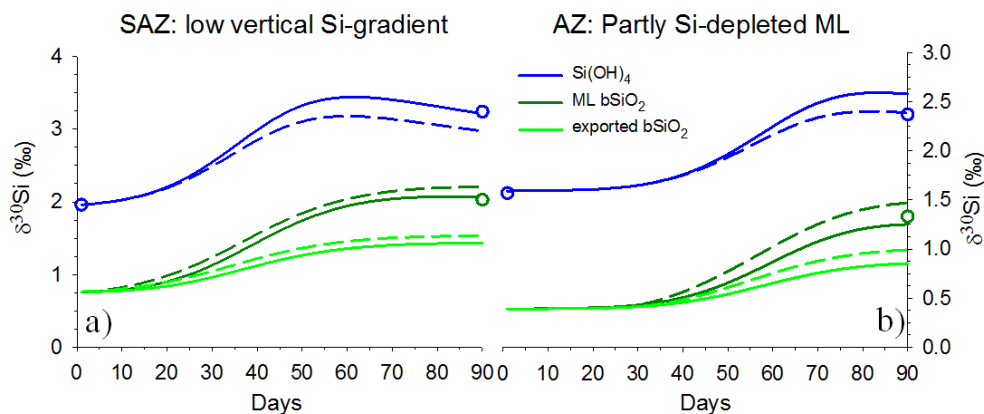


Fig. 8. Model outputs for the SAZ (a) and AZ (b). Simulated $\delta^{30}\text{Si}$ values for $\text{Si}(\text{OH})_4$, ML bSiO_2 , exported bSiO_2 without (full lines) and with (dashed lines) bSiO_2 dissolution isotopic fractionation ($\epsilon^{30} = -0.55$ ‰). The initial and final estimations are indicated by empty dots with the corresponding colors (Table 2). Respectively, for the SAZ and AZ: $V_{\text{max}} = 0.40$ and 0.31 d^{-1} , $K_{\text{Si}} = 2$ and $10 \mu\text{mol l}^{-1}$, $k_{\text{export}} = 0.11$ and 0.13 d^{-1} , $\text{Si}(\text{OH})_4$ supply = 77 and 1170 mmol m^{-2} , and net bSiO_2 production = 275 and 4149 mmol m^{-2} .

high silicic acid supply:consumption ratio during the main part of the bSiO_2 production period. Consequently, mixing has no significant impact on the exported $\delta^{30}\text{Si}_{\text{bSiO}_2}$.

4.2 Fate of biogenic silica isotopic composition across the water column

The fate of biogenic silica $\delta^{30}\text{Si}$ through the water column is of prime importance to link the sedimentary $\delta^{30}\text{Si}$ to the surface environmental conditions in which they were generated. Dissolution during settling could affect the $\delta^{30}\text{Si}_{\text{bSiO}_2}$ distributions by shifting the preserved material toward more positive values (Demarest et al., 2009). By analysing the $\delta^{30}\text{Si}$ of sinking biogenic silica (two sediment traps in the AZ at 1031 and 2182 m in the Pacific sector; Varela et al., 2004) a remarkable agreement with surface values was observed. This is further confirmed by the present study which presents the first whole water column profiles of suspended biogenic silica $\delta^{30}\text{Si}$ signatures (Fig. 4). The isotopic composition of subsurface suspended biogenic silica generally reflects that of the mixed layer. It thus seems that dissolution does not significantly affect the $\delta^{30}\text{Si}$ signal of exported bSiO_2 . However, there are two notable exceptions:

1. In the WG, the $\delta^{30}\text{Si}_{\text{bSiO}_2}$ is becoming heavier by 0.4 to 0.8‰ below 1800 m (Fig. 4). Since no values are available between 700 and 1800 m we do not know whether this shift is progressive or only located at a specific depth. Cavagna et al. (2012) for the same stations, observed that the $\delta^{13}\text{C}$ composition of deep ocean particles during BGH is consistent mostly with a 1-D vertical transport. This would preclude lateral advection of particles as the reason for such offset in Si isotopes. Consequently, it cannot be ruled out that the $\delta^{30}\text{Si}_{\text{bSiO}_2}$ particle water column profile of the WG station is biased by a progressive dissolution of biogenic silica, preferentially releasing light silicon isotopes.
2. The strong $\delta^{30}\text{Si}_{\text{bSiO}_2}$ lightening, by 0.6‰, below the mixed layer in the WG might result from biogenic silica produced from a subsurface $\text{Si}(\text{OH})_4$ pool with lighter $\delta^{30}\text{Si}_{\text{Si}(\text{OH})_4}$, as is present at such depths (Table 1; Fripiat et al., 2011b). These depths extend below the euphotic layer (1% PAR). Several studies have shown that energy involved in the silicification process is mainly of respiratory origin and therefore decoupled from photosynthesis (Martin-Jézéquel et al., 2000)

allowing Si-uptake below the euphotic layer (Brzezinski et al., 1989).

5 Conclusions

With a palaeoceanography perspective this study has attempted to assess the controls upon, and the seasonal evolution of, biogenic silica isotopic compositions in the mixed layer and its transfer across the water column. This data set acquired in late austral summer highlights two main points:

1. A large latitudinal variation in $\delta^{30}\text{Si}_{\text{bSiO}_2}$ is observed in the mixed layer across the meridional BGH transect, contrasting with a narrower variation for $\delta^{30}\text{Si}_{\text{Si(OH)}_4}$. This decoupling cannot be reproduced by Rayleigh and steady-state isotopic fractionation models, which directly link the $\delta^{30}\text{Si}$ to relative Si(OH)_4 utilisation. These model failures probably result from the fact that (i) a constant isotopic fractionation is assumed over the entire period of silicate depletion and/or (ii) the seasonal expressions of the different isotopic effects are not appropriately taken into account (i.e. only Si-uptake is considered). We implemented an isotopic fractionation model to describe the seasonal $\delta^{30}\text{Si}$ variation in the mixed layer. From this analysis, it seems that the exported biogenic silica is rather well described by the Rayleigh accumulated product. The failures of the existing models are especially significant at the end of the productive period when (i) biogenic silica production and export are low; (ii) bSiO_2 dissolution:production ratio is high, imposing a lower apparent fractionation factor; and (iii) Si-supply:Si-uptake ratio is high. The latter effect is especially expressed when the summer mixed layer is strongly Si-depleted together with a large silicic acid vertical gradient, as is the case in the southern ACC. Despite being very hypothetical, we cannot rule out a spatial and seasonal variation in the fractionation factor associated with the net bSiO_2 production. However, it seems unlikely that such variation alone is sufficient to explain the observations.
2. Except below 1800 m in the Weddell Gyre, where we cannot rule out a potential bSiO_2 dissolution effect, the deeper $\delta^{30}\text{Si}_{\text{bSiO}_2}$ is generally similar to the mixed layer $\delta^{30}\text{Si}_{\text{bSiO}_2}$, which supports the absence of an isotopic effect during particle settling through the water column in most cases.

Acknowledgements. Our warm thanks go to the officers and crew of the R/V *Marion Dufresne* during the BONUS-Goodhope cruise, as well as to S. Speich and M. Boyé as program leaders. We are also grateful to J. De Jong and N. Mattielli for the management of the MC-ICP-MS laboratory at ULB and to L. Monin and N. Dahkani (RMCA) for their help in sample processing and to Virginia

Panizzo (ULB) for correction of English. This work was conducted within the BELCANTO III – BIGSOUTH networks (contracts SD/CA/03A of SPSDIII, Support Plan for Sustainable Development) funded by BELSPO, the Belgian Science Policy. Luc André thanks the “Fonds National de la Recherche Scientifique” (FNRS, Belgium) for its financial support (FRFC project 2.4512.00). François Fripiat and Anouk de Brauwere are post-doctoral fellows with the FNRS.

Edited by: A. Shemesh

References

- Abraham, K., Opfergelt, S., Fripiat, F., Cavagna, A.-J., de Jong, J.T.M., Foley, S.F., André, L., and Cardinal, D.: $\delta^{30}\text{Si}$ and $\delta^{29}\text{Si}$ determinations on USGS BHVO-1 and BHVO-2 reference materials with a new configuration on a Nu Plasma Multi-Collector ICP-MS, *Geost. Geoanal. Res.*, 32, 193–202, 2008.
- Allison, D. B., Stramski, D., and Mitchell, B. G.: Seasonal and inter-annual variability of particulate organic carbon within the Southern Ocean from satellite ocean color observations, *J. Geophys. Res.* 115, C06002, doi:10.1029/2009JC005347, 2010.
- Anderson, R. F., Chase, Z., Fleisher, M. Q., and Sachs, J.: The Southern Ocean’s biological pump during the Last Glacial Maximum, *Deep-Sea Res. II*, 49, 1909–1938, 2002.
- Anderson, R. F., Ali, S., Bradtmiller, L. I., Nielsen, S. H. H., Fleisher, M. Q., Anderson, B. E., and Burckle, L. H.: Wind-driven upwelling in the Southern Ocean and the deglacial rise in atmospheric CO_2 , *Science*, 323, 1443–1448, doi:10.1126/science.1167441, 2009.
- Beucher, C., Tréguer, P., Hapette, A.-M., and Corvaisier, R.: Intense summer Si-recycling in the surface Southern Ocean, *Geophys. Res. Lett.*, 31, L09305, doi:10.1029/2003GL018998, 2004.
- Beucher, C. P., Brzezinski, M. A., and Crosta, X.: Silicic acid dynamics in the glacial sub-Antarctic: Implications for the silicic acid leakage hypothesis, *Global Biogeochem. Cy.*, 21, GB3015, doi:10.1029/2006GB002746, 2007.
- Brzezinski, M. A. and Nelson, D. M.: Seasonal changes in the silicon cycle within a Gulf Stream warm-core ring, *Deep-Sea Res.*, 36, 1009–1030, 1989.
- Brzezinski, M. A., Nelson, D. M., Franck, V. M., and Sigmon, D. E.: Silicon dynamics within an intense open-ocean diatom bloom in the Pacific sector of the Southern Ocean, *Deep-Sea Res. II*, 48, 3997–4018, 2001.
- Brzezinski, M. A., Pride, C. J., Franck, V. M., Sigman, D. M., Sarmiento, J. L., Matsumoto, K., Gruber, N., Rau, G. H., and Coale, K. H.: A switch from Si(OH)_4 to NO_3^- depletion in the glacial Southern Ocean, *Geophys. Res. Lett.*, 29, 1564, doi:10.1029/2001GL014349, 2002.
- Brzezinski, M. A., Jones, J. L., Bidle, K. D., and Azam, F.: The balance between silica production and silica dissolution in the sea: Insights from Monterey Bay, California, applied to the global data set, *Limnol. Oceanogr.*, 48, 1846–1854, 2003.
- Cardinal, D., Alleman, L. Y., de Jong, J., Ziegler, K., and André, L.: Isotopic composition of silicon measured by multicollector plasma source mass spectrometry in dry plasma mode, *J. Anal. Atom. Spectrom.*, 18, 213–218, 2003.
- Cardinal, D., Alleman, L. Y., Dehairs, F., Savoye, N., Trull, T. W., and André, L.: Relevance of silicon isotopes to Si-nutrient uti-

- lization and Si-source assessment in Antarctic waters, *Global Biogeochem. Cy.*, 19, GB2007, doi:10.1029/2004GB002364, 2005.
- Cardinal, D., Savoye, N., Trull, T. W., Dehairs, F., Kopczynska, E. E., Fripiat, F., Tison, J.-L., and André, L.: Silicon isotopes in spring Southern Ocean diatoms: large zonal changes despite homogeneity among size fractions, *Mar. Chem.*, 106, 46–62, 2007.
- Cavagna, A.-J., Fripiat, F., Dehairs, F., Wolf-Gladrow, D., Cisewski, B., Savoye, N., André, L., and Cardinal, D.: Silicon uptake and supply during a Southern Ocean iron fertilization experiment (EIFEX) tracked by Si isotopes. *Limnol. Oceanogr.*, 56, 147–160, 2011.
- Cavagna, A.-J., Dehairs, F., Woule-Ebongué, V., Bouillon, S., Planchon, F., Delille, B., and Bouloubassi, I.: Whole water column distribution and carbon isotopic composition of bulk particulate organic carbon, cholesterol and brassicasterol from the Cape Basin to the northern Weddell Gyre in the Southern Ocean, *Biogeosciences Discuss.*, 9, 1667–1709, doi:10.5194/bgd-9-1667-2012, 2012.
- de Boyer Montégut, C., Madec, G., Fischer, A. S., Lazar, A., and Ludicone, D.: Mixed layer depth over the global ocean: An examination of profile data and a profile-based climatology, *J. Geophys. Res.*, 109, C12003, doi:10.1029/2004JC002378, 2004.
- De La Rocha, C. L.: Opal-based isotopic proxies of paleoenvironmental conditions, *Global Biogeochem. Cy.*, 20, GB4S09, doi:10.1029/2005GB002664, 2006.
- De La Rocha, C. L., Brzezinski, M. A., and DeNiro, M. J.: Purification recovery and laser-driven fluorination of silicon from dissolved and particulate silica for the measurement of natural stable isotope abundances, *Anal. Chem.*, 68, 3746–3750, 1996.
- De La Rocha, C. L., Brzezinski, M. A., and DeNiro, M. J.: Fractionation of silicon isotopes by marine diatoms during biogenic silica formation, *Geochim. Cosmochim. Acta*, 61, 5051–5056, 1997.
- De La Rocha, C. L., Brzezinski, M. A., and DeNiro, M. J.: Silicon isotope composition of diatoms as an indicator of past oceanic change, *Nature*, 395, 680–683, 1998.
- Demarest, M. S., Brzezinski, M. A., and Beucher, C. P.: Fractionation of silicon isotopes during biogenic silica dissolution, *Geochim. Cosmochim. Acta*, 73, 5572–5583, doi:10.1016/j.gca.2009.06.019, 2009.
- De Souza, G. F.: The marine biogeochemical cycle of silicon: insight from silicon stable isotopes, Ph.D. thesis, Swiss Federal Institute for Technology, available at: <http://e-collection.library.ethz.ch/view/eth:4728>, 2011.
- Douthitt, C. B.: The geochemistry of the stable isotopes of silicon, *Geochim. Cosmochim. Acta*, 46, 1449–1458, 1982.
- Faure, V., Arhan, M., Speich, S., and Gladyshev, S.: Heat budget of the surface mixed layer south of Africa, *Ocean Dynamics*, 61, 1441–1458, 2011.
- Fripiat, F.: Isotopic approaches of the silicon cycles: The Southern Ocean case study, Ph.D. thesis, Université Libre de Bruxelles, available at: <http://theses.ulb.ac.be/ETD-db/collection/available/ULBetd-12142009-190405/>, 2010.
- Fripiat, F., Cavagna, A.-J., Savoye, N., Dehairs, F., André, L., and Cardinal, D.: Isotopic constraints on the Si-biogeochemical cycle of the Antarctic Zone in the Kerguelen area (KEOPS), *Mar. Chem.*, 123, 11–22, 2011a.
- Fripiat, F., Cavagna, A.-J., Dehairs, F., Speich, S., André, L., and Cardinal, D.: Silicon pool dynamics and biogenic silica export in the Southern Ocean inferred from Si-isotopes, *Ocean Sci.*, 7, 533–547, doi:10.5194/os-7-533-2011, 2011b.
- Fripiat, F., Leblanc, K., Elskens, M., Cavagna, A.-J., Armand, L., André, L., Dehairs, F., and Cardinal, D.: Summer efficient silicon loop across the Polar Front and SubAntarctic Zones despite contrasted diatom Si-affinity, *Mar. Ecol. Prog. Ser.*, 435, 47–61, doi:10.3354/meps09237, 2011c.
- Fry, B.: *Stable Isotope Ecology*, Springer, New York, 308 pp., 2003.
- Fütterer, D. K.: The solid phase of marine sediments, in: *Marine Geochemistry*, Springer, New York, 1–25, doi:10.1007/3-540-32144-6_1, 2006.
- Garcia, H. E., Locarnini, R. A., Boyer, T. P., and Antonov, J. I.: *World Ocean Atlas 2005, Volume 4: Nutrients (phosphate, nitrate, silicate)*, edited by: Levitus, S., NOAA Atlas NESDIS 64, US Government Printing Office, Washington, DC, 396 pp., 2006.
- Georg, R. B., Zhu, C., Reynolds, B. C., and Halliday, A. N.: Stable silicon isotopes of groundwater, feldspars, and clay coating in the Navajo Sandstone aquifer, Black Mesa, Arizona, USA, *Geochim. Cosmochim. Acta*, 73, 2229–2241, 2009b.
- Grasshof, K., Erhardt, M., and Kremling, K.: *Methods of seawater analysis*, 2nd ed. Verlag Chemie, Weinheim, 1983.
- Hendry, K. R. and Robinson, L. F.: The relationship between silicon isotope fractionation in sponges and silicic acid concentration: Modern and core-top studies of biogenic opal, *Geochim. Cosmochim. Acta*, 81, 1–12, 2012.
- Karl, D. M. and Tien, G.: MAGIC: a sensitive and precise method for measuring dissolved phosphorus in aquatic environments, *Limnol. Oceanogr.*, 37, 105–116, 1992.
- Krause, J. W., Brzezinski, M. A., Landry, M. R., Baines, S. B., Nelson, D. M., Selph, K. E., Taylor, A. G., and Twining, B. S.: The effects of biogenic silica detritus, zooplankton grazing, and diatom size structure on silicon cycling in the euphotic zone of the eastern equatorial Pacific, *Limnol. Oceanogr.*, 55, 2608–2622, 2010.
- Martin-Jézéquel, V., Hildebrand, M., and Brzezinski, M. A.: Review: Silicon metabolism in diatoms: implications for growth, *J. Phycol.*, 36, 821–840, 2000.
- Milligan, A. J., Varela, D. E., Brzezinski, M. A., and Morel, F. M. M.: Dynamics of silicon metabolism and silicon isotopic discrimination in a marine diatom as a function of $p\text{CO}_2$, *Limnol. Oceanogr.*, 49, 322–329, 2004.
- Moore, J. K. and Abbott, M. R.: Phytoplankton chlorophyll distributions and primary production in the Southern Ocean, *J. Geophys. Res.*, 106, 28709–28722, 2000.
- Opfergelt, S., Cardinal, D., André, L., Delvigne, C., Bremond, L., and Delvaux, B.: Variations of $\delta^{30}\text{Si}$ and Ge/Si with weathering and biogenic input in tropical basaltic ash soils under monoculture, *Geochim. Cosmochim. Acta*, 74, 225–240, 2010.
- Pondaven, P., Fravallo, C., Ruiz-Pino, D., Tréguer, P., Quéguiner, B., and Jeandel, C.: Modelling the silica pump in the Permanently Open Ocean Zone of the Southern Ocean, *J. Mar. Syst.*, 17, 578–619, 1998.
- Pondaven, P., Ruiz-Pino, D., Fravallo, C., Tréguer, P., and Jeandel, C.: Interannual variability of Si and N cycles at the time-series station KERFIX between 1990 and 1995 – a 1-D modelling study, *Deep Sea Res. I*, 47, 223–257, 2000.
- Quéguiner, B. and Brzezinski, M. A.: Biogenic silica production rates and particulate matter distribution in the Atlantic sector of the Southern Ocean During austral spring 1992, *Deep-Sea Res.*,

- 49, 1765–1786, 2002.
- Ragueneau, O., Savoye, N., Del Amo, Y., Cotten, J., Tardiveau, B., and Leynaert, A.: A new method for the measurement of biogenic silica in suspended matter of coastal waters : using Si:Al ratios to correct for the mineral interference, *Cont. Shelf Res.*, 25, 697–710, 2005.
- Reynolds, B. C., Frank, M., and Halliday, A. N.: Silicon isotope fractionation during nutrient utilization in the North Pacific, *Earth Planet. Sci. Lett.*, 244, 431–443, 2006.
- Reynolds, B. C., Aggarwal, J., André, L., Baxter, D., Beucher, C., Brzezinski, M. A., Engström, E., Georg, R. B., Land, M., Leng, M. J., Opfergelt, S., Rodushkin, I., Sloane, H. J., van den Boorn, H. J. M., Vroon, P. Z., and Cardinal, D.: An inter-laboratory comparison of Si isotope reference materials, *J. Anal. Atom. Spectrom.*, 22, 561–568, doi:10.1039/b616755a, 2007.
- Sarmiento, J. L., Gruber, N., Brzezinski, M. A., and Dunne, J. P.: High-latitude controls of thermocline nutrients and low latitude biological productivity, *Nature*, 427, 56–60, 2004.
- Sigman, D. M., Hain, M. P., and Haug, G. H.: The polar ocean and glacial cycles in atmospheric CO₂ concentration, *Nature*, 466, 47–55, doi:10.1038/nature09149, 2010.
- Sutton, J. N., Varela, D. E., Brzezinski, M. A., and Beucher, C.: Species-dependent silicon isotope fractionation in unialgal cultures of marine diatoms, AGU Fall Meeting 2011, PP51B-1831, 2011.
- Taylor, S. R. and McLennan, S. M.: *The continental crust: its composition and evolution*, Blackwell Scientific Publications, Oxford, 312 pp., 1985.
- Thamtrakoln, K. and Hildebrand, M.: Silicon uptake in diatoms revisited: a model for saturable and nonsaturable uptake kinetics and the role of silicon transporters, *Plant. Physiol.*, 146, 1397–1407, 2008.
- Tomczak, M. and Godfrey, J. S.: *Regional Oceanography: An Introduction*, Pergamon, New York, 2001.
- Varela, D. E., Pride, C. J., and Brzezinski, M. A.: Biological fractionation of silicon isotopes in Southern Ocean surface waters, *Global Biogeochem. Cy.*, 18, GB1047, doi:10.1029/2003GB002140, 2004.
- Wille, M., Sutton, J., Ellwood, M. J., Sambridge, M., Maher, W., Eggins, S., and Kelly, M.: Silicon isotopic fractionation in marine sponges: a new model for understanding silicon fractionation in sponges, *Earth Planet. Sci. Lett.*, 292, 281–289, doi:10.1016/j.epsl.2010.01.036, 2010.
- Ziegler, K., Chadwick, O. A., Brzezinski, M. A., and Kelly, E. F.: Natural variations of $\delta^{30}\text{Si}$ ratios during progressive basalt weathering, Hawaiian Islands, *Geochim. Cosmochim. Acta*, 69, 4597–4610, 2005.