



**HAL**  
open science

## Hypothalamic nitric oxide in hypoglycemia detection and counterregulation: a two-edged sword

Xavier Fioramonti, Zhentao Song, Reema P. Vazirani, Annie Beuve, Vanessa  
H. Routh

► **To cite this version:**

Xavier Fioramonti, Zhentao Song, Reema P. Vazirani, Annie Beuve, Vanessa H. Routh. Hypothalamic nitric oxide in hypoglycemia detection and counterregulation: a two-edged sword. *Antioxidants and Redox Signaling*, 2011, 14 (3), pp.505-517. 10.1089/ars.2010.3331 . hal-01137049

**HAL Id: hal-01137049**

**<https://hal.science/hal-01137049v1>**

Submitted on 10 Oct 2015

**HAL** is a multi-disciplinary open access archive for the deposit and dissemination of scientific research documents, whether they are published or not. The documents may come from teaching and research institutions in France or abroad, or from public or private research centers.

L'archive ouverte pluridisciplinaire **HAL**, est destinée au dépôt et à la diffusion de documents scientifiques de niveau recherche, publiés ou non, émanant des établissements d'enseignement et de recherche français ou étrangers, des laboratoires publics ou privés.

# Hypothalamic Nitric Oxide in Hypoglycemia Detection and Counterregulation: A Two-Edged Sword

Xavier Fioramonti, Zhentao Song, Reema P. Vazirani, Annie Beuve, and Vanessa H. Routh

## Abstract

Hypoglycemia is the main complication for patients with type 1 diabetes mellitus receiving intensive insulin therapy. In addition to the obvious deleterious effects of acute hypoglycemia on brain function, recurrent episodes of hypoglycemia (RH) have an even more insidious effect. RH impairs the ability of the brain to detect and initiate an appropriate counterregulatory response (CRR) to restore euglycemia in response to subsequent hypoglycemia. Knowledge of mechanisms involved in hypoglycemia detection and counterregulation has significantly improved over the past 20 years. Glucose sensitive neurons (GSNs) in the ventromedial hypothalamus (VMH) may play a key role in the CRR. VMH nitric oxide (NO) production has recently been shown to be critical for both the CRR and glucose sensing by glucose-inhibited neurons. Interestingly, downstream effects of NO may also contribute to the impaired CRR after RH. In this review, we will discuss current literature regarding the molecular mechanisms by which VMH GSNs sense glucose. Putative roles of GSNs in the detection and initiation of the CRR will then be described. Finally, hypothetical mechanisms by which VMH NO production may both facilitate and subsequently impair the CRR will be discussed. *Antioxid. Redox Signal.* 00, 000–000.

## Introduction

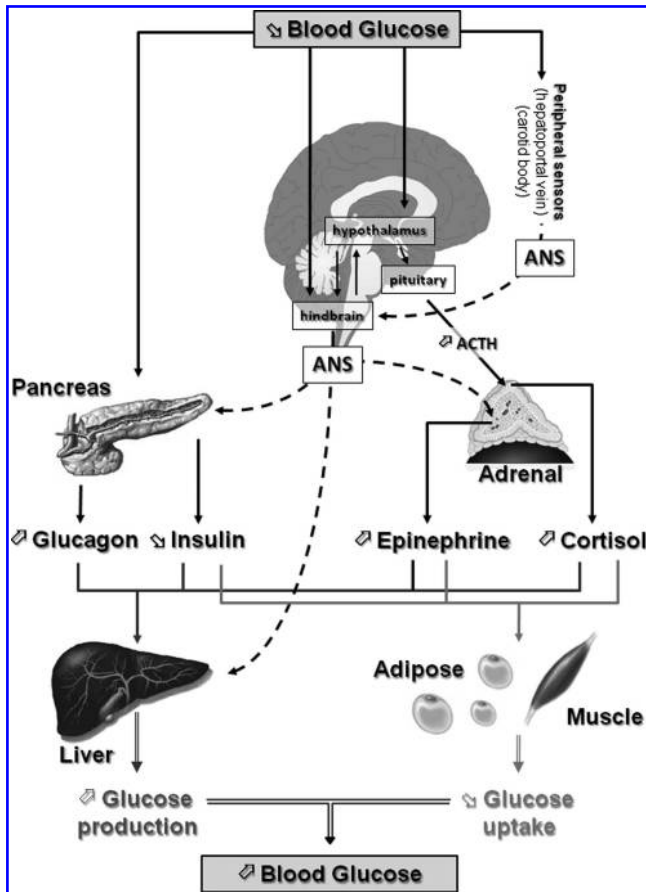
ACCORDING TO THE diabetes control and complications trial, the development of complications due to hyperglycemia (neuropathy, retinopathy, and nephropathy) in patients with type 1 diabetes mellitus (T1DM) is reduced but not eliminated by partial glycaemic control (1). Tight glycaemic control, which can be achieved by intensive insulin therapy, significantly improves diabetic-related complications but is limited by the induction of iatrogenic hypoglycemia. Most people with T1DM but also those with advanced type 2 diabetes mellitus who require intensive insulin therapy experience hypoglycemia. As glucose is the principal fuel for the brain, severe hypoglycemia often leads to seizure and/or coma. A detailed discussion of the ramifications of hypoglycemia in diabetes is beyond the scope of this review and is very well described by P.E. Cryer in the “The Barrier of Hypoglycemia in Diabetes” (22).

### *Hypoglycemia counterregulation and hypoglycemia-associated autonomic failure*

It is clear that maintaining a satisfactory range of blood glucose is a fundamental concern of the brain since this organ cannot synthesize glucose. Rather, the brain relies on a con-

stant supply of glucose coming from the bloodstream. Thus, hypoglycemia is a profound threat to the brain. As a result, hypoglycemia triggers a coordinated series of neuroendocrine events that restore euglycemia. These events known as the counterregulatory response (CRR) are initiated in sequence as blood glucose levels fall (Fig. 1). As the blood glucose level decreases to 80–85 mg/dL, insulin secretion is inhibited. When the blood glucose level reaches 65–70 mg/dL, glucagon secretion increases followed by increases in epinephrine and then cortisol secretion (22, 46). The net result of the CRR is an increase in liver and kidney glucose production and a decrease in muscle and fat glucose uptake, which ultimately restore euglycemia (Fig. 1).

Unfortunately, CRR mechanisms become impaired as a consequence of recurrent hypoglycemic episodes (recurrent hypoglycemia, RH). This impairment is known as hypoglycemia-associated autonomic failure (HAAF). During HAAF, in addition to CRR impairment, hypoglycemia awareness is also altered. As a consequence, the glycaemic threshold for CRR initiation and hypoglycemia awareness shifts to lower glucose levels. The major risk of HAAF is that blood glucose levels can fall to dangerously low or lethal levels without detection. Thus, the development of HAAF after RH is a major limiting factor in the management of patients with T1DM as well as patients with advanced type 2 diabetes mellitus who require



**FIG. 1. Neuroendocrine pathways involved in the CRR to hypoglycemia.** Decreased blood glucose is detected by central (hypothalamus and hindbrain) and peripheral (pancreas, hepatportal vein, and carotid body) glucose sensors. Together, these glucose sensors coordinate physiological responses that raise blood glucose levels. The initial response to hypoglycemia involves activation of the ANS, inhibition of insulin secretion, and stimulation of pituitary adrenocorticotropic hormone (ACTH) secretion. Activation of the autonomic nervous system increases glucagon and epinephrine secretion from the pancreas and adrenal medulla, respectively. ACTH stimulates cortisol release from the adrenal cortex. Increased glucagon, epinephrine, and cortisol together with decreased insulin stimulate hepatic glucose production and decrease adipose and muscle glucose uptake. The net result of the neuroendocrine CRR to hypoglycemia is to increase blood glucose levels and restore euglycemia. ANS, autonomic nervous system; CRR, counterregulatory response.

intensive insulin therapy. Interestingly, HAAF can be reversed after 2–3 weeks of rigorous avoidance of insulin-induced hypoglycemia (22). Although HAAF is a serious health issue, the mechanisms by which it occurs, as well as reverses, are not well understood.

In this review, we will discuss what is known regarding central regulation of the CRR, and specifically the putative roles of glucose-sensing neurons (GSNs) in the ventromedial hypothalamus (VMH) in this response. We will focus on the novel role played by hypothalamic nitric oxide (NO) in CRR initiation and VMH glucose sensing. Finally, we will present possible mechanisms by which VMH NO production could also contribute to HAAF.

## Central Nervous System Control of the CRR

### Role of the VMH in the CRR

In animal studies, glucose sensors have been found both in peripheral tissues (pancreatic  $\beta$ -cells, intestine, carotid body, and hepatportal vein) and in the central nervous system (amygdala, septum, striatum, motor-cortex, and hindbrain) (62), including the hypothalamus (15, 31, 68, 76). The respective roles of these peripheral and central glucose sensors in hypoglycemia detection and the control of the CRR will not be discussed here. However, it is noteworthy that the relative importance of the central versus peripheral glucose sensors in the initiation of the CRR depends on the rate of blood glucose level decline. In an elegant study, Donovan's group has recently shown that the hepatportal glucose sensor dominates when hypoglycemia develops slowly and is responsible for over 90% of the sympathoadrenal response to hypoglycemia. When hypoglycemia develops faster, brain glucose sensors play a predominant role in the hypoglycemia detection and CRR initiation (64). While there are numerous studies that preferentially evaluate either peripheral or central glucose sensors during hypoglycemia, less is known about how these glucose sensors interact and coordinate the generation of the CRR. A recent review by Watts and Donovan begins to address this issue (77).

In the current review, we will focus our attention on the role played by the glucose sensors that exist in the VMH. It is generally well accepted that the VMH plays a key regulatory role in the control of the CRR. Electrical stimulation of the VMH in a rodent model activates the sympathoadrenal system in a manner similar to that seen during the CRR (72). Chemical destruction of the VMH with ibotenic acid inhibits the CRR to acute hypoglycemia (13). Local perfusion of the VMH with 2-deoxyglucose (2-DG, a nonmetabolizable form of glucose that mimics local hypoglycemia) stimulates the production of CRR hormones, whereas local VMH perfusion with glucose during systemic hypoglycemia inhibits the CRR (11, 14).

It is important to note the VMH actually consists of two different nuclei: the ventromedial (VMN) and the arcuate (ARC) nuclei. Their respective role in the control of the CRR is poorly understood. The VMN projects to autonomic outflow areas of the spinal cord *via* a brainstem projection to the periaqueductal gray and the reticular formation (24). Such projections are consistent with a stimulation of sympathoadrenal responses seen during the initiation of the CRR. On the other hand, the ARC may be more involved in the control of food intake and energy expenditure [for review, see ref. (66)]. *In vivo* studies of the VMH lack the specificity to distinguish between the ARC and the VMN. Since VMN projections appear most likely to be involved in the CRR, we have chosen to use VMN glucose sensors in our *in vitro* studies as prototypes to understand the cellular basis of central regulation of the CRR. This, however, does not exclude a role for ARC or other central glucose sensors in CRR regulation.

### The VMN glucose sensors

Hypothalamic neurons that modulate their electrical activity in response to changes in extracellular glucose level were first characterized in the 1960s (5, 57). These GSNs use glucose, not only as fuel, but also as a signaling molecule that

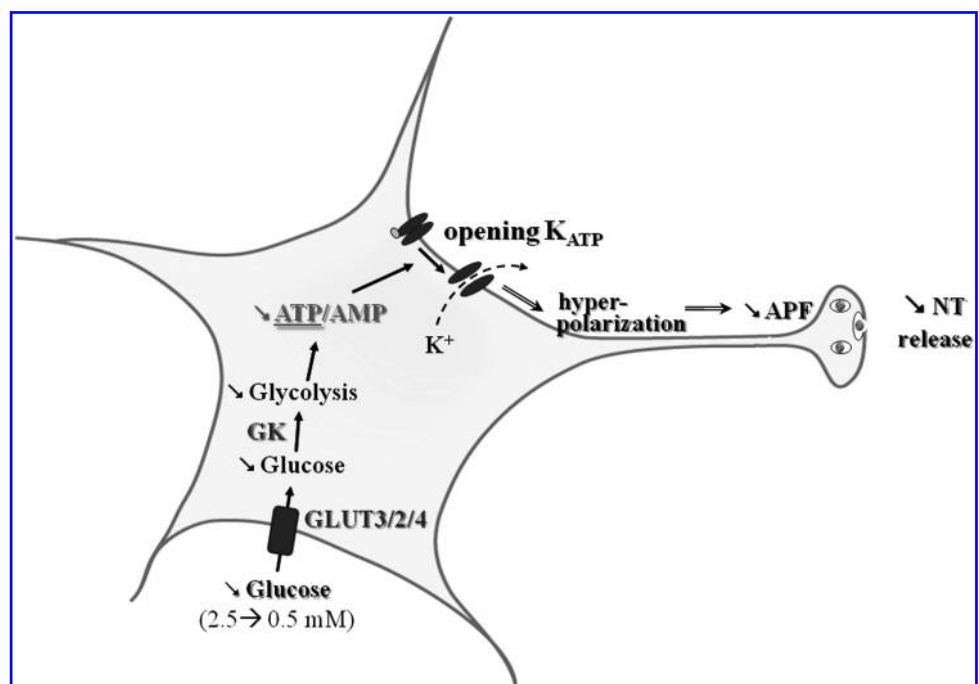
regulates their electrical activity. In most cerebral areas protected by the blood–brain barrier (including the VMN), brain extracellular glucose level is about 30% of that found in blood. Thus, the extracellular brain glucose level ranges from 0.16 to 4.5 mM during peripheral hypoglycemia (2–3 mM) or hyperglycemia ( $\geq 15$  mM), respectively. During euglycemia, brain extracellular glucose concentrations are approximately 2 mM (63). In the VMN, two types of GSNs have been found that respond directly to changes in extracellular glucose levels within this physiological range: the glucose-excited (GE) neurons and the glucose-inhibited (GI) neurons (68). GE neurons decrease whereas GI neurons increase their electrical activity as the glucose level decreases from 2.5 to 0.1 mM (68). Interestingly, VMN GE and GI neurons are exquisitely sensitive to decreases in glucose below 2.5 mM while remaining relatively insensitive to glucose increases above this level (68). This suggests that VMN GE and GI neurons are capable of playing a role in the detection of hypoglycemia and initiation of the CRR.

**GE neurons.** GE neurons exhibit a concentration-dependent increase in activity as extracellular glucose concentration rises (Fig. 2) (20, 68, 76). The mechanisms by which these neurons sense changes in glucose levels are fairly well understood. It has been proposed that GE neurons use similar glucose-sensing mechanisms as the pancreatic  $\beta$ -cell, which secretes insulin in response to increased glucose levels. In the  $\beta$ -cell, glucose is transported by the high-capacity glucose transporter 2 (GLUT2) and phosphorylated by the hexokinase IV isoform, glucokinase (GK). Glucose metabolism increases the intracellular ATP/ADP ratio, which consequently closes ATP-sensitive potassium channels ( $K_{ATP}$  channels).  $K_{ATP}$  channel closure depolarizes the  $\beta$ -cell and leads to  $Ca^{++}$  entrance, which in turn stimulates the exocytosis of insulin-containing vesicles. In the  $\beta$ -cell, GLUT2, GK, and  $K_{ATP}$  are considered the key glucosensors responsible for glucose-stimulated insulin secretion.

$K_{ATP}$  channels, the pancreatic form of GK and GLUT2, are found throughout the brain, including hypothalamic regions involved in glucose sensing (6, 25, 27). Subunits of  $K_{ATP}$  channels and GK are expressed and functional in VMH GE neurons (41). Modulating the activity of  $K_{ATP}$  channels or GK alters glucose sensitivity of VMH GE neurons (7, 40, 68). Less is known regarding the involvement of GLUT2 in VMN GE neurons glucose sensing. GLUT2 has been mainly found in astrocytes but not in neurons (6). In addition, Kang *et al.* showed that GLUT2 is only expressed in  $\sim 20\%$  of VMH GE neurons (41). Other GLUTs such as GLUT3 and the insulin-sensitive transporter GLUT4 are expressed in hypothalamic neurons (4, 28, 41, 75). GLUT3 is expressed in 83% and GLUT4 in 57% of VMN GE neurons (41). Thus, whether a specific GLUT confers glucose sensitivity has yet to be determined.

The question that remains to be answered is whether VMH GE neurons play a role in the CRR to hypoglycemia. Alterations in the glucose-sensing machinery of VMN GE neurons are associated with CRR impairment, which is consistent with a role of GE neurons in the CRR. For example, glucagon production in response to insulin-induced hypoglycemia is impaired in Kir6.2-deficient mice lacking both functional  $K_{ATP}$  channels and VMH GE neurons (52). In addition, Sherwin's group showed that *in vivo* modulation of activity of  $K_{ATP}$  channels with sulphonylureas alters the CRR. VMH infusion of glibenclamide ( $K_{ATP}$  channel blocker) suppresses, whereas diazoxide ( $K_{ATP}$  channel opener) amplifies, the CRR during hypoglycemic clamp (29, 47). Levin and colleagues showed that modulation of GK activity altered both the glucose sensitivity of VMH GE neurons *in vitro* and the CRR *in vivo* (26, 40, 43). These data suggest that VMH GE neurons, through  $K_{ATP}$  channels and GK, play an important role in the control of the CRR. However,  $K_{ATP}$  channel expression is ubiquitous and is not specific to GE neurons. Thus, modulation of  $K_{ATP}$  channel activity would alter the electrical activity of other GSNs as well as non-GSNs. In contrast, GK expression seems relatively specific to VMH GSNs (41). However,

**FIG. 2. Molecular mechanisms by which VMN GE sense glucose.** Decreased extracellular glucose leads to decreased glycolytic flux and decreases the ATP/AMP ratio. Decreased intracellular ATP level opens  $K_{ATP}$  channels that hyperpolarize the cell leading to decreased APF and NT release. APF, action potential frequency; GE, glucose-excited;  $K_{ATP}$ , ATP-sensitive  $K^+$ ; NT, neurotransmitter; VMN, ventromedial nucleus.



GK has a very low glucose affinity ( $\sim 10$  mM), which is well above the brain glucose concentration range. Thus, the role played by GK in hypoglycemia detection still remains controversial.

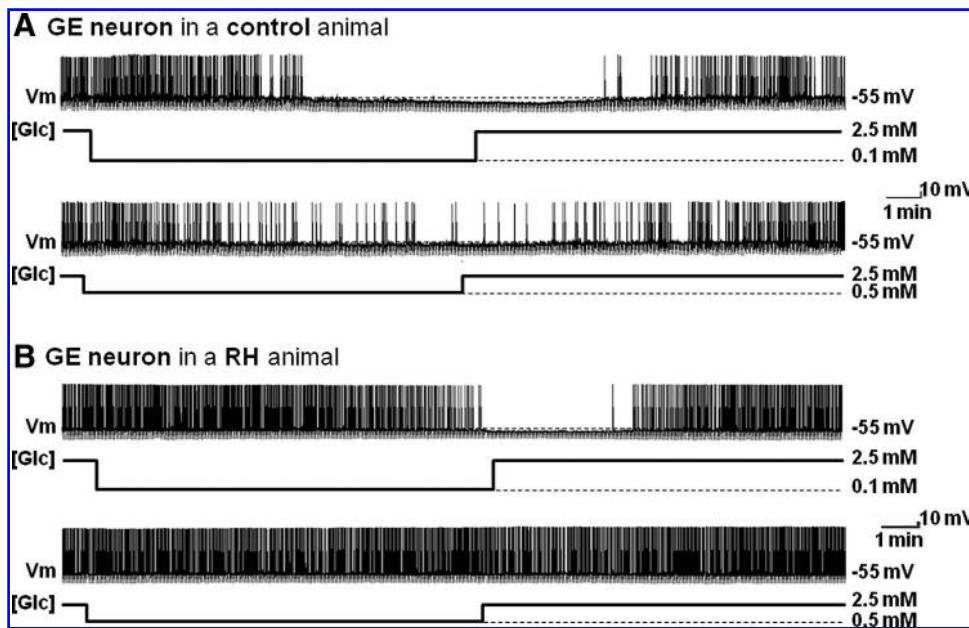
Further evidence from our laboratory suggests that GE neurons are involved in the CRR. We found that the response of VMN GE neurons to decreased glucose is attenuated under conditions where the CRR is impaired. Our laboratory and others have shown that the CRR is impaired after three consecutive daily episodes of insulin-induced hypoglycemia in rats (RH model) (23, 70). Using this model, we found that RH impairs the response of VMN GE neurons to decreased glucose (Fig. 3). In control animals, VMN GE neurons decreased their input resistance, membrane potential, and action potential frequency (APF) in response to glucose decreases from 2.5 to 0.5 or 0.1 mM. However, in RH animals, VMN GE neurons only decrease their input resistance, membrane potential, and APF when glucose is lowered to 0.1 but not 0.5 mM (Fig. 3). Thus, the threshold glucose level at which GE neurons become inhibited is lowered after RH. These results are consistent with a role for VMN GE neurons in the CRR. However, more work is necessary to further confirm a causal role between impaired VMN GE neuronal glucose sensing and impaired CRR.

**GI neurons.** GI neurons increase their electrical activity as extracellular glucose concentration decreases (Fig. 4) (68). Recently, significant progress has been made in the elucidation of the VMH GI neuronal glucose-sensing mechanisms. GK, AMP-activated kinase (AMPK), neuronal NO synthase (nNOS), and the cystic fibrosis transmembrane regulator (CFTR) are all critical for glucose sensing. The specific GLUT is still uncertain. Among VMN GI neurons, 22% express

GLUT2, 96% express GLUT3, and 63% express GLUT4 (41). Thus, as for GE neurons, a specific GLUT has yet to be implicated. GK is expressed in about 50% of VMH GI neurons (41). Modulation of GK activity alters the glucose sensitivity of VMH GI neurons (26, 40). These data suggest that, as in GE neurons, GK is an important regulator of glucose sensing in at least some VMN GI populations.

In contrast to GE neurons, AMPK is a key component of glucose sensing in GI neurons (16, 21, 56). Alterations in AMPK activity are associated with changes in glucose sensitivity of VMH GI neurons. Decreased glucose decreases the ATP/AMP ratio and increases VMH AMPK activity (56). Activation of AMPK activity mimics while inhibition of AMPK activity inhibits the response of VMH GI neurons to decreased glucose (54, 56). We have recently shown that nNOS is a downstream mediator of AMPK effects in GI neurons. It is well established that AMPK phosphorylates and activates nNOS in many tissues, including the brain (2, 44, 80). We have found this to be true in VMN GI neurons as well (16, 56). Further, VMH GI neurons produce NO in response to decreased glucose (16). NO production is a fundamental step in VMH GI neuronal glucose sensing. nNOS-deficient mice lack VMH GI neurons (32). In addition, nNOS inhibition impairs VMH GI neuronal responses to decreased glucose as well as AMPK activation (56).

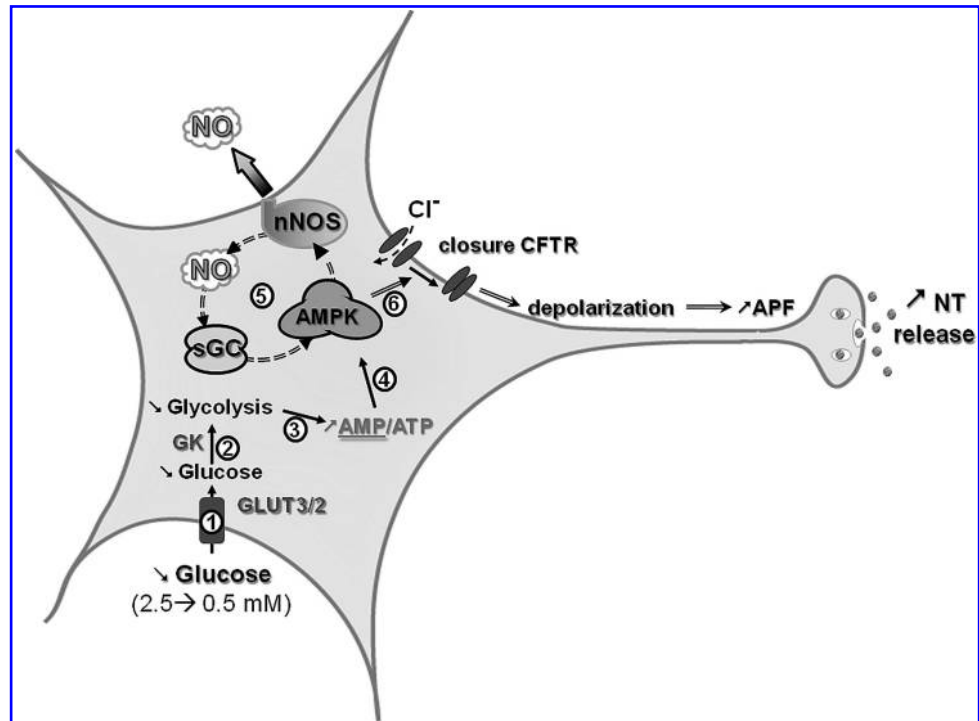
The downstream effects of NO on the glucose response of VMN GI neurons are mediated through its receptor, soluble guanylyl cyclase (sGC), which is found in the majority of VMH neurons (16). When activated by NO, sGC increases cyclic GMP (cGMP) levels, leading to depolarization of VMN GI neurons. Interestingly, the NO-sGC-cGMP pathway is not only downstream of AMPK but also provides a necessary amplification of AMPK activity in VMN GI neurons. Our data



**FIG. 3. The response of VMN GE neurons to decreased glucose is impaired after RH.** Continuous whole cell current clamp recordings of VMN GE neurons in brain slices from control rats (saline-injected; **A**) or animals injected daily for 3 consecutive days with insulin subcutaneously (RH protocol; **B**). (**A**) Decreased extracellular glucose from 2.5 to 0.1 mM (top trace) or from 2.5 to 0.5 mM (bottom trace) decreased membrane potential, APF, and input resistance in this VMN GE neuron from a control rat in a concentration-dependent manner. (**B**) In contrast, membrane potential, APF, and input resistance were only reduced in response to decreased glucose

from 2.5 to 0.1 mM (top trace) but not to decreased glucose from 2.5 to 0.5 mM (bottom trace) in this VMN GE neuron from a rat exposed to RH. Changes in glucose concentration ([Glc]) are shown below each trace. Resting membrane potential (Vm) is represented by the dotted line and mentioned on the right of each trace. The downward deflections represent the membrane voltage response to a constant hyperpolarizing pulse ( $-20$  pA) and were used to calculate input resistance. RH, recurrent hypoglycemia.

**FIG. 4. Molecular mechanisms by which VMN GI neurons sense glucose.** Decreased extracellular glucose leads to decreased glycolytic flux and increases the AMP/ATP ratio ((1)–(3)). Increased AMP levels activate the AMPK ((4)). AMPK activation phosphorylates and activates nNOS increasing NO production. NO binds to its receptor sGC, which amplifies AMPK activation ((5)). This amplification of AMPK activity closes the CFTR chloride channel ((6)). CFTR closure depolarizes the GI neuron, leading to increased APF and NT release. AMPK, AMP-activated kinase; CFTR, cystic fibrosis transmembrane regulator; GI, glucose-inhibited; nNOS, neuronal nitric oxide synthase; sGC, soluble guanylate cyclase.



indicate that AMPK inhibition prevents the cell permeable analog of cGMP, 8-Br-cGMP, from depolarizing GI neurons. Thus, as in skeletal muscle (44) and endothelial cells (80) an AMPK-NO-AMPK signaling loop links changes in intracellular energy availability to physiological responses.

$K_{ATP}$  channels are expressed and functional in VMH GI as well as GE neurons (41, 69). However, in GI neurons increased electrical activity in response to decreased glucose is correlated with the closure of a chloride conductance (30, 68). The CFTR is believed to be the chloride channel responsible for the electrical activity changes in GI neurons. The CFTR is expressed in several brain regions, including the hypothalamus (55). We have recently shown that CFTR phosphorylation is regulated by AMPK in the VMH (56). Moreover, the CFTR modulator gemfibrozil inhibits VMH GI neurons response to decreased glucose (30). The CFTR channel is a member of ATP binding cassette and possesses sulphonylurea-binding subunits (SUR) as do  $K_{ATP}$  channels (60). Thus, it is important to note that *in vivo* studies using sulphonylureas do not target GE neurons specifically through modulation of  $K_{ATP}$  channel activity since GI neurons may also be affected as a result of interactions with the sulphonylurea subunit of either  $K_{ATP}$  or CFTR channels. The hypothetical mechanism for glucose sensing of VMN GI neurons as indicated by our data is shown in Figure 4.

Like GE neurons, the fact that VMN GI neurons are particularly sensitive to glucose deficit makes them well suited to play a role in hypoglycemia detection and counterregulation. This hypothesis is supported by that fact that components of VMN GI neuronal glucose-sensing machinery found to be activated by decreased glucose *in vitro* are also activated *in vivo*. That is, VMH AMPK activity is increased in response to insulin-induced hypoglycemia (34) and to cerebral glucopenia (3). VMH NOS activity is also increased in response to insulin-induced hypoglycemia. In addition, manipulating VMN GI

neuronal glucose-sensing machinery *in vivo* alters the CRR. For example, modulation of VMH GK activity affects the CRR (43). Moreover, VMH AMPK inhibition attenuates the CRR to acute hypoglycemia (34, 50). In contrast, stimulating VMH AMPK activity amplifies the CRR to acute hypoglycemia and restores the impaired CRR after RH (48, 49). Interestingly, while the AMPK activator AICAR stimulates VMH GI neurons *in vitro*, VMH AICAR infusion during euglycemia does not initiate the CRR (48). This is consistent with the idea that multiple glucose sensors are necessary to coordinate the initiation of the CRR.

The hypothesis that VMN GI neurons play a role in the control of the CRR is further supported by numerous studies, indicating that VMN GI neuronal glucose sensitivity is altered under conditions where the CRR is impaired. First, the response of VMN GI neurons to decreased glucose is reduced after RH when the CRR is impaired (70). Second, alterations in VMH fuel source availability and/or utilization during hypoglycemia causes CRR impairment and reduces the response of VMN GI neurons to decreased glucose. Like glucose, other energy sources (*e.g.*, lactate and ketone bodies) enter the brain and support energy metabolism during glucose deficiency. VMH lactate infusion inhibits the CRR during hypoglycemia (12). Similarly, we found that increased extracellular lactate levels attenuated the increase in APF of VMN GI neurons as glucose decreased from 2.5 to 0.1 mM (69). Thus, lactate supplementation reduces the response of VMN GI neurons to glucose deficit. Third, activation of the hypothalamic-pituitary-adrenal axis impairs the CRR to subsequent hypoglycemia and reduces VMN GI neuronal response to decreased glucose. Systemic perfusion of corticotrophin-releasing factor or VMH infusion of the endogenous corticotrophin-releasing factor receptor 2 agonist urocortin inhibits the CRR *in vivo* (51). Similarly, we found that urocortin decreases VMN GI neuronal response to decreased glucose *in vitro* (51). Finally, our recent

data showing that VMH NO signaling is crucial for both the full generation of the CRR *in vivo* and the ability of VMN GI neurons to sense glucose *in vitro* provide a further support for the hypothesis that VMN GI neurons play a key role in hypoglycemia detection and the initiation of the CRR (32). For the remainder of this review we will focus on the putative role of NO signaling in central glucose sensing and the development of HAAF.

### The Role of NO in the CRR

#### NO is critical for activation of the CRR

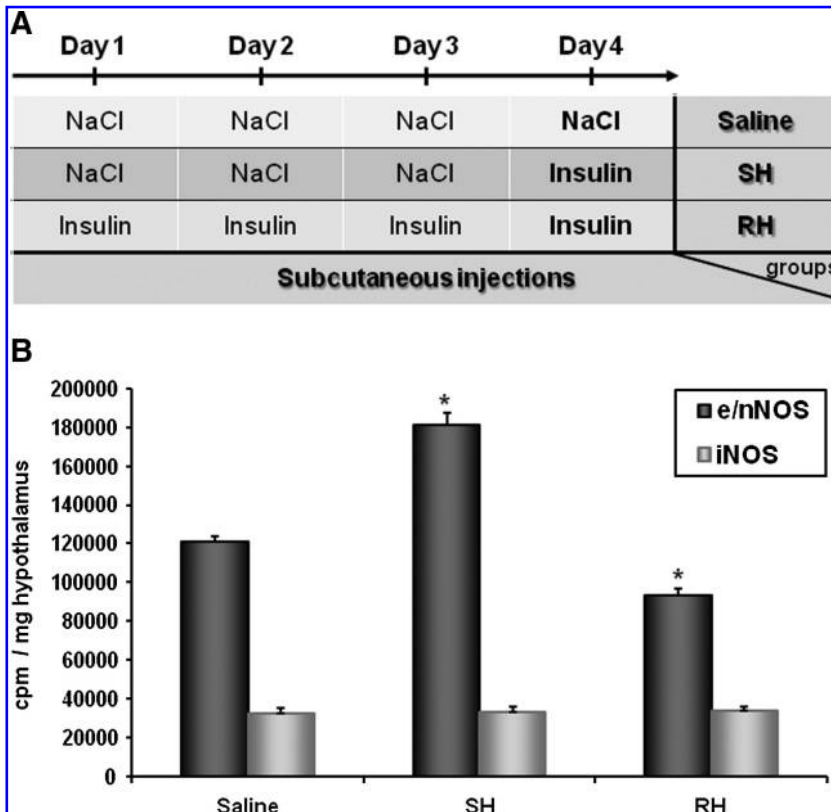
As mentioned previously, decreased glucose activates nNOS and increases NO production in VMH GI neurons (16). Using *in vitro* and *in vivo* strategies, we recently confirmed that nNOS-derived NO is produced in the VMH during hypoglycemia. Insulin-induced hypoglycemia increases VMH constitutive NOS (nNOS + endothelial [e] NOS) activity. Increased NOS activity during hypoglycemia is associated with phosphorylation of the nNOS but not endothelial NOS (eNOS) isoform. Moreover, we found that decreased glucose levels *in vitro* increase extracellular NO release using electrochemical detection of NO production. Next, we established that hypothalamic NO production is necessary for the full generation of the CRR. Plasma epinephrine production is impaired during a hyperinsulinemic/hypoglycemic clamp in animals injected in the VMH with a nonselective NOS inhibitor. Additionally, nNOS-deficient mice have an impaired CRR and lack VMN GI neurons (32). To strengthen our hypothesis that hypothalamic NO production is a critical step for the full generation of the CRR, we measured hypothalamic NOS activity in response to insulin-induced hypoglycemia

after RH. Constitutive NOS activity is increased in response to insulin-induced hypoglycemia in naive animals injected with saline daily for 3 consecutive days. In contrast, no increase in constitutive NOS activity was detected in RH animals (injected with insulin daily for 3 consecutive days) in response to a subsequent episode of insulin-induced hypoglycemia (Fig. 5). This shows that increased NOS activity in response to insulin-induced hypoglycemia is impaired after RH. These data support the idea that VMH NO production is an important component of the central response to hypoglycemia and initiation of the CRR. Determination of the mechanisms leading to impaired NOS activity after RH may lead to the development of new therapeutic strategies to prevent the development of HAAF.

#### Potential functions of hypothalamic NO during hypoglycemia

NO, as a gas, diffuses freely across cell membranes, providing the opportunity to affect adjacent cells. The NO receptor sGC is distributed widely in the brain, and is present in virtually all VMH neurons (16, 33). Thus, NO produced by VMH GI neurons could modulate the activity of surrounding VMH glucose sensing and non-GSNs or even glia or neighboring capillaries. The consequences of such effects of NO are discussed in the following sections.

**NO and blood flow.** In peripheral tissues, one of the main physiological functions of NO is related to the vascular system. It is well established that NO produced by endothelial cells through the eNOS isoform induces the relaxation of neighboring smooth muscle cells. This leads to vasodilatation

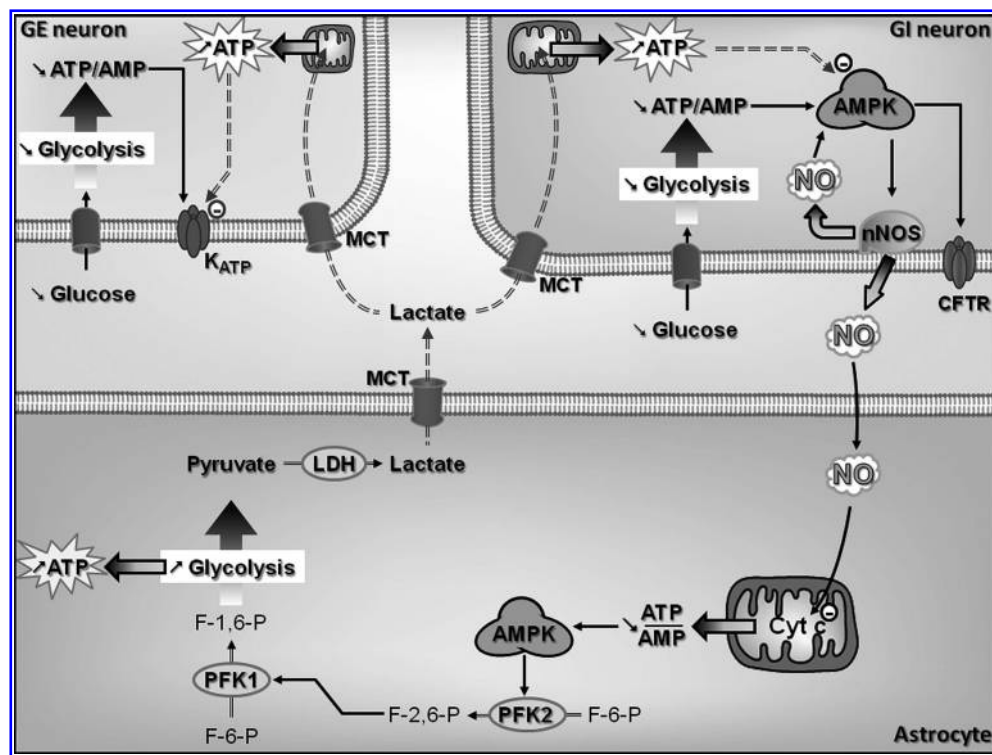


**FIG. 5. RH impairs insulin-induced increased NOS activity.** (A) Experimental protocol of RH. (B) Ventral hypothalamic constitutive (e/nNOS) or iNOS NOS activity measured 60 min postinjection from rats injected subcutaneously with NaCl (saline) or insulin (4 U/kg) on the 4th day after 3 consecutive days of saline (SH) or insulin (RH) treatment. \* $p < 0.05$  versus saline group (one-way ANOVA). iNOS, inducible NOS; SH, single hypoglycemia.

and increased blood flow (53). Human and animal studies showed that insulin-induced hypoglycemia is associated with increased cerebral blood flow in different brain areas, including the hypothalamus (42, 58). Hypoglycemia-induced increases in cerebral blood flow could increase nutrient availability to brain cells during energy deficit. Insulin-induced hypoglycemia does not increase eNOS activity (32). However, NO produced by VMH GI neurons *via* the nNOS isoform could diffuse to adjacent smooth muscle cells and increase blood flow locally. The role of NO on the control of brain blood flow during hypoglycemia remains controversial. Horinaka *et al.* showed that hypoglycemia-induced increased blood flow was not inhibited by peripheral administration of a nonselective NOS inhibitor (37). Nevertheless, concerns have been raised regarding the ability of NOS inhibitors administered peripherally to cross the blood-brain barrier and enter the brain in adult rats (9, 19). Further *in vivo* studies using local inhibition of NOS activity during hypoglycemia are required to determine whether hypothalamic NO production is involved in hypoglycemia-related vasorelaxation.

**NO and nutrient supply.** Studies performed by Bolanos' group suggest that NO increases energy supply during en-

ergy deficit (Fig. 6). NO increases GLUT1 and GLUT3 expression in astrocytes and neurons, respectively (17). In primary cortical cultures NO increases glycolytic flux in astrocytes (2, 10). Bolanos and colleagues proposed that NO impairs mitochondrial respiration *via* cytochrome c inhibition, which initially decreases the rate of ATP formation. The resulting increase in the AMP/ATP ratio increases AMPK activity. AMPK phosphorylates and activates 6-phosphofructo-2-kinase. 6-Phosphofructo-2-kinase increases the formation of fructose-2,6-bisphosphate from fructose-6-phosphate. Fructose-2,6-bisphosphate is the most potent activator of the rate limiting enzyme in glycolysis, phosphofructo-1-kinase. Thus, increased fructose-2,6-bisphosphate increases the rate of glycolysis, leading to ATP and pyruvate formation. Because mitochondrial respiration is inhibited, pyruvate is then transformed to lactate by lactate dehydrogenase rather than metabolized through the Krebs cycle. Increased glycolytic ATP level compensates for the energy deficit in astrocytes (9, 10) (Fig. 6). Lactate cannot be used by astrocytes as a source of ATP under anaerobic conditions but may be transported to adjacent neurons to fulfill their energy needs during hypoglycemia (see below). Astrocytes are also known to store energy as glycogen. Glycogen stores provide substrates for



**FIG. 6. Hypothetical role of NO production by VMN GI neurons in the astrocyte-neuron lactate shuttle.** Decreased extracellular glucose decreases GI neuronal intracellular ATP/AMP ratio and increases NO production through an AMPK-dependent mechanism. Full AMPK activation closes CFTR channels and increases GI neurons APF. Decreased extracellular glucose also decreases ATP/AMP ratio in GE neurons. Decreased ATP opens  $K_{ATP}$  channels and decreases GE neurons membrane potential and APF. NO produced by VMN GI neurons could diffuse to adjacent astrocytes and inhibit mitochondrial Cyt c and consequently mitochondrial respiration. Decreased mitochondrial respiration decreases astrocytic ATP levels, leading to AMPK activation. AMPK stimulates F-2,6-P formation *via* activation of PFK2. Increased F-2,6-P activates PFK1, which increases formation of F-1,6-P and consequently increases glycolytic flux. Increased glycolytic rate increases formation of anaerobic ATP and pyruvate. Pyruvate is converted lactate *via* LDH. Lactate may be transported to adjacent GI and GE neurons *via* MCT. In GI and GE neurons, lactate would increase intracellular ATP level, thus decreasing the response of GI and GE neurons to subsequent glucose decreases. Cyt c, cytochrome c; F-1,6-P, fructose-1,6-bisphosphate; F-2,6-P, fructose-2,6-bisphosphate; LDH, lactate dehydrogenase; MCT, monocarboxylate transporter; PFK, phospho-fructo-kinase.



glycolysis, leading to a further increase in ATP and lactate in response to NO. Thus, NO produced by GI neurons may restore energy deficit in astrocytes during hypoglycemia by increasing glycolytic ATP.

In neurons, however, because of low expression of 6-phosphofructo-2-kinase, decreased ATP levels resulting from NO-dependent cytochrome c inhibition do not enhance the glycolytic production of ATP as seen in astrocytes (2, 9, 10). Thus, the ATP deficit could lead to energy crisis and neuronal death. However, Magistretti's group has proposed that astrocytes have the ability to fuel neurons through an astrocyte-neuron coupling pathway involving lactate transport. They called this model the "astrocyte-neuron lactate shuttle" (45, 59). The astrocyte-neuron lactate shuttle model states that during increased neuronal activity, the decrease in neuronal energy level would be compensated by astrocytic lactate production from glycogen stores and/or circulating glucose. Lactate produced by astrocyte could be transported to adjacent neurons *via* monocarboxylic acid transporters and fulfill their energy demands. Combining Bolanos' and Magistretti's models leads to the hypothesis that NO produced by VMH GI neurons during insulin-induced hypoglycemia increases lactate production by neighboring astrocytes to fuel surrounding glucose- or nonglucose-sensitive neurons *via* the astrocyte-neuron lactate shuttle (Fig. 6). In support of this hypothesis, monocarboxylic acid transporter 1 expression is increased during hypoglycemia (74). However, no one has been able to actually measure increased extracellular lactate during hypoglycemia. One possibility is that lactate is taken up by neurons as fast as it is released from astrocytes. Thus, increased extracellular lactate concentration during hypoglycemia would not be detectable. The other possibility, of course, is that the astrocyte-neuron lactate shuttle hypothesis is not valid in the hypothalamus during hypoglycemia. More work is required to determine whether NO-stimulated lactate production by astrocytes fuels neurons during insulin-induced hypoglycemia.

**NO and GE neurons.** We found that VMN GE neurons are fully functional in nNOS knockout mice. However, NO produced by GI neurons could diffuse to adjacent GE neurons and affect their glucose sensitivity. As discussed above, NO inhibits the mitochondrial cytochrome c and decreases mitochondrial respiration and ATP formation. Consequently, VMH GI neuronal NO production could further decrease ATP level in GE neurons during decreased extracellular glucose. Thus, the response of VMH GE neurons to decreased glucose would be greater in the presence of surrounding NO producing GI neurons. On the other hand, lactate produced by astrocytes in response to GI neuronal NO production could provide an energy source to GE neurons masking glucose deficit. In this case, NO produced by GI neurons could decrease the response of VMH GE neurons to subsequent glucose decrease. This hypothesis is discussed more in detail in the next section. Further investigation is needed to determine whether NO produced by GI neurons influences the glucose sensitivity of GSNs.

To summarize, there are several putative functions for NO produced by VMH GI neurons in the control of energy homeostasis in addition to its role in GI neurons glucose sensing. VMH NO production in GI neurons could participate in increased blood flow locally during hypoglycemia. NO pro-

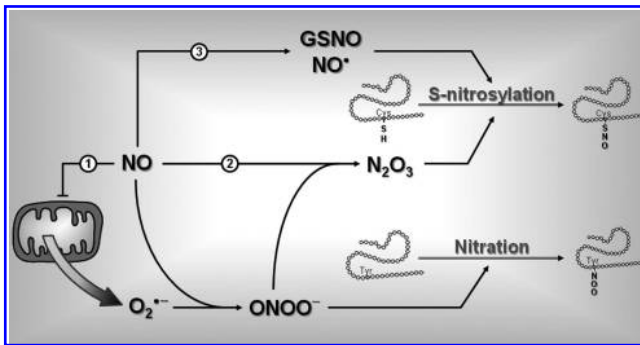
duction in GI neurons could also stimulate glycolysis in astrocytes and increase neuronal fuel supplies as a result of the astrocyte-neuron lactate shuttle. Finally, VMH NO production during insulin-induced hypoglycemia could modulate glucose sensitivity of VMH GE neurons.

#### *Involvement of hypothalamic NO in the CRR impairment after RH*

As mentioned in the Introduction, the CRR becomes impaired after recurrent episodes of insulin-induced hypoglycemia. While the mechanisms involved in the initiation of the CRR are fairly well understood, mechanisms involved in its impairment after RH are not. Our data show that VMH NO production is required for full generation of the CRR and glucose sensing in GI neurons. In the last part of this review we will introduce the hypothesis that VMH NO production also plays a role in the CRR impairment to subsequent hypoglycemia after RH.

**NO and lactate.** We hypothesized above that VMH NO production increases astrocytic lactate production and transport to surrounding neurons through an astrocyte-neuron lactate shuttle. VMH infusion of lactate impairs the CRR during hypoglycemic clamp (12). Moreover, increased extracellular lactate concentration impairs the ability of VMN GI and GE neurons to respond to decreased glucose (69). The glucose-sensing machinery of both GI and GE neurons involves changes in intracellular ATP level. In GI neurons, decreased ATP/AMP resulting from decreased extracellular glucose activates AMPK, leading to CFTR channel closure and depolarization. In GE neurons, decreased intracellular ATP directly opens  $K_{ATP}$  channels, leading to hyperpolarization. Increased extracellular lactate concentration may raise neuronal ATP levels. Thus, increased lactate concentration would mask the effect of decreased glucose on the intracellular ATP level (Fig. 6). Enhancing astrocytic production of lactate to GSNs is therefore one mechanism by which NO production during hypoglycemia could decrease the sensitivity of GSNs to subsequent hypoglycemia and impair the CRR. This phenomenon could be exacerbated by the fact that hypothalamic glycogen content might be increased after RH as described by Alquier and colleagues (3). These data are, however, controversial since Herzog and colleagues found no difference in hypothalamic glycogen level after acute or RH (35). The difference between these two studies may be due to the different RH models used (3 consecutive days of intracerebro-ventricular 2-Deoxy-D-glucose [ICV 2-DG] injection in Alquier *et al.* vs. 3 consecutive days of insulin-induced hypoglycemia in Herzog *et al.*). Thus, while the hypothesis that VMH NO production triggers an increase in the astrocyte-neuron lactate shuttle which could participate in development of HAAF after RH is intriguing, further investigation is needed to resolve these controversies.

**NO and reactive oxygen species.** NO may also play a role in the development of HAAF through the production of reactive oxygen species (ROS) (Fig. 7). ROS production in response to hypoglycemia is believed to occur in many brain regions, including the hypothalamus. Insulin-induced hypoglycemia increases the level of lipid peroxidation and DNA fragmentation while decreasing the level of reduced gluta-

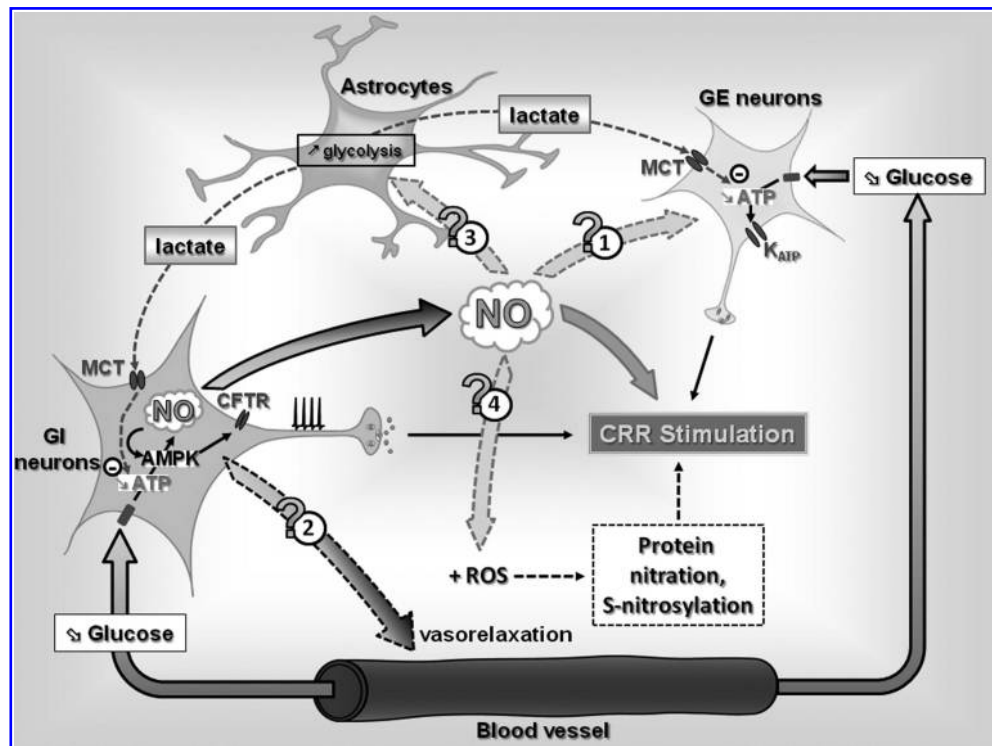


**FIG. 7. Role of NO in protein posttranslational modification.** Increased NO production can alter protein structure and ultimately function by nitration (1) and/or S-nitrosylation (2), (3). (1) NO can inhibit mitochondrial cytochrome c and stimulate generation of anion superoxide ( $O_2^{\bullet-}$ ). Interaction between NO and  $O_2^{\bullet-}$  forms peroxynitrite ( $ONOO^-$ ).  $ONOO^-$  can react with a free Tyr on proteins to form nitrated Tyr through a reaction called tyrosine nitration. (2)  $ONOO^-$  can also react with another molecule of NO to form dinitrogen trioxide ( $N_2O_3$ ).  $N_2O_3$  can interact with free Cys thiols on proteins to form S-nitro-thiol groups in a reaction called S-nitrosylation. (3) In an oxidative environment, increased NO level can also increase formation of GSNO and/or reactive NO ( $NO^{\bullet}$ ). GSNO and  $NO^{\bullet}$  can also interact with free Cys to induce S-nitrosylation. Cys, cysteine; GSNO, nitroso-glutathione; Tyr, tyrosine.

thione in rats (67). In addition, Leloup and Penicaud (CSGA, Dijon, France) evaluated ROS production in the VMH of rats injected with saline or insulin (4 U/kg, subcutaneously) by measuring the fluorescence of the ROS-sensitive probe  $H_2DCFDA$  (5,6-chloromethyl-2',7'-dichlorodihydrofluorescein diacetate acetyl ester). They found that  $H_2DCFDA$  fluorescence was significantly increased by ~50% in the VMH of insulin-treated animals compared with saline controls (personal communication). These results provide further support that ROS are produced in the VMH in response to insulin hypoglycemia.

The mechanisms and cell types responsible for VMH ROS production during hypoglycemia are unknown. One hypothesis is that ROS formation is mediated by increased NO production. As mentioned earlier, NO inhibits cytochrome c and blocks mitochondrial respiration. A consequence of mitochondrial respiration inhibition is the production of the superoxide anion  $O_2^{\bullet-}$  (18) (Fig. 7). Since VMH GI neurons produce NO during insulin-induced hypoglycemia, one might hypothesize that these GI neurons are the source of ROS production. However, since NO can diffuse across cell membranes it is also possible that NO triggers ROS production in other cell types as well.

The effects of ROS on CRR impairment after RH are purely speculative at this time. However, increased NO and ROS production can alter protein function, which could lead to



**FIG. 8. Hypothetical mechanisms by which NO production by VMN GI neurons modulates the CRR to hypoglycemia.** A decreased blood glucose level decreases the intracellular ATP level and stimulates NO production in VMN GI neurons through an AMPK-dependent mechanism, leading to increased APF. In VMN GE neurons, decreased blood glucose decreases the intracellular ATP level, leading to  $K_{ATP}$  opening and decreased APF. In addition to its role in GI neuronal glucose sensing and CRR initiation, NO produced by GI neurons could diffuse to adjacent cells, and (1) modulate GE neurons glucose sensitivity, (2) increase local blood flow, and/or (3) increase glycolytic flux in surrounding astrocytes. Increased astrocytic glycolysis would increase lactate production and transport to surrounding GI and GE neurons altering their glucose sensitivity. Finally ((4)), interaction between NO and ROS production could increase the level of protein nitration and/or S-nitrosylation and affect the CRR to subsequent hypoglycemia. ROS, reactive oxygen species.

CRR impairment (Fig. 7). NO and superoxide readily combine to form peroxynitrite ( $\text{ONOO}^-$ ) (8). Peroxynitrite can modify protein structure in several ways, including the nonenzymatic reactions tyrosine nitration and S-nitrosylation. Tyrosine nitration consists in the addition of a nitro group ( $-\text{NO}_2$ ) to exposed tyrosine residue (38). In contrast, S-nitrosylation is a reaction that results in the addition of an NO moiety to the free thiol of a cysteine (Cys-SH) to form an S-nitroso-thiol (Cys-S-NO) (36, 71). Peroxynitrite can also react with another molecule of NO to form dinitrogen trioxide ( $\text{N}_2\text{O}_3$ ), which increases the level of S-nitrosylation. In an oxidative environment, increased NO levels can also increase formation of nitroso-glutathione (GSNO) and/or reactive NO (nitrosium ion,  $\text{NO}^+$ ), both of which can react with free cysteine thiols on proteins, leading to increased S-nitrosylation (Fig. 7). A large number of peripheral and central proteins are targets of S-nitrosylation (39). Protein S-nitrosylation may be involved in the control of glucose homeostasis since proteins involved in glucose sensing are known targets of S-nitrosylation, including GK (61), nNOS (78), sGC (65), and CFTR (79). For instance, S-nitrosylation decreases NOS activity (78) and the sensitivity of sGC for NO (65). In both cases, S-nitrosylation of nNOS or sGC would decrease NO signaling. Since VMH NO-signaling is important for the generation of the CRR, inhibition of VMH NO-signaling by S-nitrosylation could lead to CRR impairment to subsequent hypoglycemia and development of HAAF. It is worth noting that this hypothesis is consistent with our results showing that RH reduces NOS activity and with the results of Leloup and Penicaud (personal communication) showing that hypoglycemia increases VMH ROS levels. However, the hypothetical role of protein nitration and/or S-nitrosylation in the development of HAAF remains to be determined.

Another hypothetical consequence of NO and ROS production is induction of cell apoptosis. Prolonged or repetitive concomitant NO and ROS production induces neuronal apoptosis. In support of this, one episode of severe hypoglycemia is sufficient to increase the number of apoptotic cells in the hypothalamus (73). The implication of apoptosis in the development of HAAF is yet another hypothesis that requires further evaluation

## Conclusion

Our knowledge regarding mechanisms involved in the brain detection of hypoglycemia and the initiation the CRR has significantly evolved over the past 20 years (Fig. 8). A growing body of evidence supports a role for VMH GI and GE neurons in the regulation of the CRR. Further, the mechanisms by which they sense glucose are fairly well characterized with the notable exception of GLUT isoform involved. Work from our laboratory and others suggests that GK, and the  $\text{K}_{\text{ATP}}$  channel in GE neurons and AMPK in GI neurons are necessary for both glucose sensing and the CRR.

In the last few years, our laboratory has discovered the involvement of a new and important key determinant of glucose sensing in GI neurons and hypoglycemia counter-regulation: NO. We found that (a) VMH GI neurons produce NO in response to decreased glucose; (b) production of NO by VMH GI neurons is required for glucose sensitivity *in vitro*, and (c) VMH NO production is important in the regulation of the CRR *in vivo*.

However, less is known regarding the mechanisms involved in CRR impairment after RH. As discussed in this review, we hypothesize that while NO is critical for central glucose sensing, NO may also participate in the development of HAAF. VMH NO production could (a) increase energy supply to GSNs and decrease their glucose sensitivity *via* increasing local blood flow or stimulating the astrocyte-neuron lactate shuttle or (b) increase ROS production during hypoglycemia and lead to alterations in glucose-sensing machinery and/or neuronal apoptosis (Fig. 8).

VMH NO production by GI neurons appears to be a necessary component of hypoglycemia detection and counter-regulation. However, overproduction and/or a coproduction with ROS may impair the CRR and play a role in the development of HAAF. Determining whether and how VMH NO and ROS signaling are involved in the development of HAAF will enable us to safely wield the powerful two-edged sword: NO. In turn, such knowledge will provide new therapeutic targets to reduce the risks of hypoglycemia in patients with T1DM.

## Acknowledgments

Authors would like to thank Dr. Thierry Alquier for helpful discussions and critical reading of the article. This work was supported in part by research awards from the Juvenile Diabetes Research Foundation (V.H.R.), the National Health Institute (2RO1DK55619 and 1RO1DK81358; V.H.R.), and a Juvenile Diabetes Research Foundation postdoctoral award (X.F.).

## References

1. The effect of intensive treatment of diabetes on the development and progression of long-term complications in insulin-dependent diabetes mellitus. The Diabetes Control and Complications Trial Research Group. *N Eng J Med* 329: 977–986, 1993.
2. Almeida A, Moncada S, and Bolanos JP. Nitric oxide switches on glycolysis through the AMP protein kinase and 6-phosphofructo-2-kinase pathway. *Nat Cell Biol* 6: 45–51, 2004.
3. Alquier T, Kawashima J, Tsuji Y, and Kahn BB. Role of hypothalamic Amp kinase in the impaired counterregulatory response induced by repetitive neuroglucopenia. *Endocrinology* 148:1367–1375, 2006.
4. Alquier T, Leloup C, Arnaud E, Magnan C, and Penicaud L. Altered Glut4 mRNA levels in specific brain areas of hyperglycemic-hyperinsulinemic rats. *Neurosci Lett* 308: 75–78, 2001.
5. Anand BK, Chhina GS, Sharma KN, Dua S, and Singh B. Activity of single neurons in the hypothalamic feeding centers: effect of glucose. *Am J Physiol* 207: 1146–1154, 1964.
6. Arluison M, Quignon M, Thorens B, Leloup C, and Penicaud L. Immunocytochemical localization of the glucose transporter 2 (GLUT2) in the adult rat brain. II. Electron microscopic study. *J Chem Neuroanat* 28: 137–146, 2004.
7. Ashford ML, Boden PR, and Treherne JM. Glucose-induced excitation of hypothalamic neurones is mediated by ATP-sensitive  $\text{K}^+$  channels. *Pflugers Arch* 415: 479–483, 1990.
8. Beckman JS, Beckman TW, Chen J, Marshall PA, and Freeman BA. Apparent hydroxyl radical production by peroxynitrite: implications for endothelial injury from nitric oxide and superoxide. *Proc Natl Acad Sci USA* 87: 1620–1624, 1990.
9. Bolanos JP and Almeida A. Modulation of astroglial energy metabolism by nitric oxide. *Antioxid Redox Signal* 8: 955–965, 2006.

10. Bolanos JP, Almeida A, and Moncada S. Glycolysis: a bioenergetic or a survival pathway? *Trends Biochem Sci* 35: 145–149, 2009.
11. Borg MA, Sherwin RS, Borg WP, Tamborlane WV, and Shulman GI. Local ventromedial hypothalamus glucose perfusion blocks counterregulation during systemic hypoglycemia in awake rats. *J Clin Invest* 99: 361–365, 1997.
12. Borg MA, Tamborlane WV, Shulman GI, and Sherwin RS. Local lactate perfusion of the ventromedial hypothalamus suppresses hypoglycemic counterregulation. *Diabetes* 52: 663–666, 2003.
13. Borg WP, Doring MJ, Sherwin RS, Borg MA, Brines ML, and Shulman GI. Ventromedial hypothalamic lesions in rats suppress counterregulatory responses to hypoglycemia. *J Clin Invest* 93: 1677–1682, 1994.
14. Borg WP, Sherwin RS, Doring MJ, Borg MA, and Shulman GI. Local ventromedial hypothalamus glucopenia triggers counterregulatory hormone release. *Diabetes* 44: 180–184, 1995.
15. Burdakov D, Luckman SM, and Verkhatsky A. Glucose-sensing neurons of the hypothalamus. *Philos Trans R Soc Lond B Biol Sci* 360: 2227–2235, 2005.
16. Canabal DD, Song Z, Potian JG, Beuve A, McArdle JJ, and Routh VH. Glucose, insulin, and leptin signaling pathways modulate nitric oxide synthesis in glucose-inhibited neurons in the ventromedial hypothalamus. *Am J Physiol Regul Integr Comp Physiol* 292: R1418–R1428, 2007.
17. Cidab P, Almeida A, and Bolanos JP. Inhibition of mitochondrial respiration by nitric oxide rapidly stimulates cytoprotective GLUT3-mediated glucose uptake through 5'-AMP-activated protein kinase. *Biochem J* 384: 629–636, 2004.
18. Cooper CE. Competitive, reversible, physiological? Inhibition of mitochondrial cytochrome oxidase by nitric oxide. *IUBMB Life* 55: 591–597, 2003.
19. Cooper CE, Davies NA, Psychoulis M, Canevari L, Bates TE, Dobbie MS, Casley CS, and Sharpe MA. Nitric oxide and peroxynitrite cause irreversible increases in the K(m) for oxygen of mitochondrial cytochrome oxidase: *in vitro* and *in vivo* studies. *Biochim Biophys Acta* 1607: 27–34, 2003.
20. Cotero VE and Routh VH. Insulin blunts the response of glucose-excited neurons in the ventrolateral-ventromedial hypothalamic nucleus to decreased glucose. *Am J Physiol Endocrinol Metab* 296: E1101–E1109, 2009.
21. Cotero VE, Zhang BB, and Routh VH. The response of glucose-excited (GE) neurons in the ventromedial hypothalamus (VMH) to decreased glucose is enhanced in a murine model of type 2 diabetes mellitus (T2DM). *J Neuroendocrinol* 22: 65–74, 2010.
22. Cryer PE. The barrier of hypoglycemia in diabetes. *Diabetes* 57: 3169–3176, 2008.
23. de Vries MG, Arseneau LM, Lawson ME, and Beverly JL. Extracellular glucose in rat ventromedial hypothalamus during acute and recurrent hypoglycemia. *Diabetes* 52: 2767–2773, 2003.
24. DeFalco J, Tomishima M, Liu H, Zhao C, Cai X, Marth JD, Enquist L, and Friedman JM. Virus-assisted mapping of neural inputs to a feeding center in the hypothalamus. *Science* 291: 2608–2613, 2001.
25. Dunn-Meynell AA, Rawson NE, and Levin BE. Distribution and phenotype of neurons containing the ATP-sensitive K<sup>+</sup> channel in rat brain. *Brain Res* 814: 41–54, 1998.
26. Dunn-Meynell AA, Routh VH, Kang L, Gaspers L, and Levin BE. Glucokinase is the likely mediator of glucosensing in both glucose-excited and glucose-inhibited central neurons. *Diabetes* 51: 2056–2065, 2002.
27. Dunn-Meynell AA, Routh VH, McArdle JJ, and Levin BE. Low-affinity sulfonylurea binding sites reside on neuronal cell bodies in the brain. *Brain Res* 745: 1–9, 1997.
28. El Messari S, Leloup C, Quignon M, Brisorgueil MJ, Penicaud L, and Arluison M. Immunocytochemical localization of the insulin-responsive glucose transporter 4 (Glut4) in the rat central nervous system. *J Comp Neurol* 399: 492–512, 1998.
29. Evans ML, McCrimmon RJ, Flanagan DE, Keshavarz T, Fan X, McNay EC, Jacob RJ, and Sherwin RS. Hypothalamic ATP-sensitive K<sup>+</sup> channels play a key role in sensing hypoglycemia and triggering counterregulatory epinephrine and glucagon responses. *Diabetes* 53: 2542–2551, 2004.
30. Fioramonti X, Contie S, Song Z, Routh VH, Lorsignol A, and Penicaud L. Characterization of glucosensing neuron subpopulations in the arcuate nucleus: integration in neuropeptide Y and pro-opio melanocortin networks? *Diabetes* 56: 1219–1227, 2007.
31. Fioramonti X, Lorsignol A, Taupignon A, and Penicaud L. A new ATP-sensitive K<sup>+</sup> channel-independent mechanism is involved in glucose-excited neurons of mouse arcuate nucleus. *Diabetes* 53: 2767–2775, 2004.
32. Fioramonti X, Marsollier N, Song Z, Fakira KA, Patel RM, Brown S, Duparc T, Pica-Mendez A, Sanders NM, Knauf C, Valet P, McCrimmon RJ, Beuve A, Magnan C, and Routh VH. Ventromedial hypothalamic nitric oxide production is necessary for hypoglycemia detection and counterregulation. *Diabetes* 59: 519–528, 2010.
33. Furuyama T, Inagaki S, and Takagi H. Localizations of alpha 1 and beta 1 subunits of soluble guanylate cyclase in the rat brain. *Brain Res Mol Brain Res* 20: 335–344, 1993.
34. Han SM, Namkoong C, Jang PG, Park IS, Hong SW, Katakami H, Chun S, Kim SW, Park JY, Lee KU, and Kim MS. Hypothalamic AMP-activated protein kinase mediates counter-regulatory responses to hypoglycaemia in rats. *Diabetologia* 48: 2170–2178, 2005.
35. Herzog RI, Chan O, Yu S, Dziura J, McNay EC, and Sherwin RS. Effect of acute and recurrent hypoglycemia on changes in brain glycogen concentration. *Endocrinology* 149: 1499–1504, 2008.
36. Hess DT, Matsumoto A, Kim SO, Marshall HE, and Stamler JS. Protein S-nitrosylation: purview and parameters. *Nat Rev Mol Cell Biol* 6: 150–166, 2005.
37. Horinaka N, Artz N, Jehle J, Takahashi S, Kennedy C, and Sokoloff L. Examination of potential mechanisms in the enhancement of cerebral blood flow by hypoglycemia and pharmacological doses of deoxyglucose. *J Cereb Blood Flow Metab* 17: 54–63, 1997.
38. Ischiropoulos H. Protein tyrosine nitration—an update. *Arch Biochem Biophys* 484: 117–121, 2009.
39. Jaffrey SR, Erdjument-Bromage H, Ferris CD, Tempst P, and Snyder SH. Protein S-nitrosylation: a physiological signal for neuronal nitric oxide. *Nat Cell Biol* 3: 193–197, 2001.
40. Kang L, Dunn-Meynell AA, Routh VH, Gaspers LD, Nagata Y, Nishimura T, Eiki J, Zhang BB, and Levin BE. Glucokinase is a critical regulator of ventromedial hypothalamic neuronal glucosensing. *Diabetes* 55: 412–420, 2006.
41. Kang L, Routh VH, Kuzhikandathil EV, Gaspers LD, and Levin BE. Physiological and molecular characteristics of rat hypothalamic ventromedial nucleus glucosensing neurons. *Diabetes* 53: 549–559, 2004.
42. Kennan RP, Takahashi K, Pan C, Shamooin H, and Pan JW. Human cerebral blood flow and metabolism in acute insulin-induced hypoglycemia. *J Cereb Blood Flow Metab* 25: 527–534, 2005.

43. Levin BE, Becker TC, Eiki J, Zhang BB, and Dunn-Meynell AA. Ventromedial hypothalamic glucokinase is an important mediator of the counterregulatory response to insulin-induced hypoglycemia. *Diabetes* 57: 1371–1379, 2008.
44. Lira VA, Soltow QA, Long JH, Betters JL, Sellman JE, and Criswell DS. Nitric oxide increases GLUT4 expression and regulates AMPK signaling in skeletal muscle. *Am J Physiol Endocrinol Metab* 293: E1062–E1068, 2007.
45. Magistretti PJ and Pellerin L. Astrocytes couple synaptic activity to glucose utilization in the brain. *News Physiol Sci* 14: 177–182, 1999.
46. McCrimmon R. The mechanisms that underlie glucose sensing during hypoglycaemia in diabetes. *Diabet Med* 25: 513–522, 2008.
47. McCrimmon RJ, Evans ML, Fan X, McNay EC, Chan O, Ding Y, Zhu W, Gram DX, and Sherwin RS. Activation of ATP-sensitive K<sup>+</sup> channels in the ventromedial hypothalamus amplifies counterregulatory hormone responses to hypoglycemia in normal and recurrently hypoglycemic rats. *Diabetes* 54: 3169–3174, 2005.
48. McCrimmon RJ, Fan X, Cheng H, McNay E, Chan O, Shaw M, Ding Y, Zhu W, and Sherwin RS. Activation of AMP-activated protein kinase within the ventromedial hypothalamus amplifies counterregulatory hormone responses in rats with defective counterregulation. *Diabetes* 55: 1755–1760, 2006.
49. McCrimmon RJ, Fan X, Ding Y, Zhu W, Jacob RJ, and Sherwin RS. Potential role for AMP-activated protein kinase in hypoglycemia sensing in the ventromedial hypothalamus. *Diabetes* 53: 1953–1958, 2004.
50. McCrimmon RJ, Shaw M, Fan X, Cheng H, Ding Y, Vella MC, Zhou L, McNay EC, and Sherwin RS. Key role for AMP-activated protein kinase in the ventromedial hypothalamus in regulating counterregulatory hormone responses to acute hypoglycemia. *Diabetes* 57: 444–450, 2008.
51. McCrimmon RJ, Song Z, Cheng H, McNay EC, Weikart-Yeckel C, Fan X, Routh VH, and Sherwin RS. Corticotrophin-releasing factor receptors within the ventromedial hypothalamus regulate hypoglycemia-induced hormonal counterregulation. *J Clin Invest* 116: 1723–1730, 2006.
52. Miki T, Liss B, Minami K, Shiuchi T, Saraya A, Kashima Y, Horiuchi M, Ashcroft F, Minokoshi Y, Roeper J, and Seino S. ATP-sensitive K<sup>+</sup> channels in the hypothalamus are essential for the maintenance of glucose homeostasis. *Nat Neurosci* 4: 507–512, 2001.
53. Moncada S, Palmer RM, and Higgs EA. Nitric oxide: physiology, pathophysiology, and pharmacology. *Pharmacol Rev* 43: 109–142, 1991.
54. Mountjoy PD, Bailey SJ, and Rutter GA. Inhibition by glucose or leptin of hypothalamic neurons expressing neuropeptide Y requires changes in AMP-activated protein kinase activity. *Diabetologia* 50: 168–177, 2007.
55. Mulberg AE, Weidner EB, Bao X, Marshall J, Jefferson DM, and Altschuler SM. Cystic fibrosis transmembrane conductance regulator protein expression in brain. *Neuroreport* 5: 1684–1688, 1994.
56. Murphy BA, Fakira KA, Song Z, Beuve A, and Routh VH. AMP-activated protein kinase and nitric oxide regulate the glucose sensitivity of ventromedial hypothalamic glucose-inhibited neurons. *Am J Physiol Cell Physiol* 297: C750–C758, 2009.
57. Oomura Y, Ono H, Ooyama H, and Wayner MJ. Glucose and osmosensitive neurons of the rat hypothalamus. *Nature* 222: 282–284, 1969.
58. Page KA, Arora J, Qiu M, Relwani R, Constable RT, and Sherwin RS. Small decrements in systemic glucose provoke increases in hypothalamic blood flow prior to the release of counterregulatory hormones. *Diabetes* 58: 448–452, 2009.
59. Pellerin L, Pellegrini G, Bittar PG, Charnay Y, Bouras C, Martin JL, Stella N, and Magistretti PJ. Evidence supporting the existence of an activity-dependent astrocyte-neuron lactate shuttle. *Dev Neurosci* 20: 291–299, 1998.
60. Riordan JR. Assembly of functional CFTR chloride channels. *Annu Rev Physiol* 67: 701–718, 2005.
61. Rizzo MA and Piston DW. Regulation of beta cell glucokinase by S-nitrosylation and association with nitric oxide synthase. *J Cell Biol* 161: 243–248, 2003.
62. Routh V, McArdle JJ, Sanders NM, Wang R, and Song Z. *Glucose Sensing Neurons*. Heilderburg: Springer, 2007.
63. Routh VH. Glucose-sensing neurons: are they physiologically relevant? *Physiol Behav* 76: 403–413, 2002.
64. Saberi M, Bohland M, and Donovan CM. The locus for hypoglycemic detection shifts with the rate of fall in glycemia: the role of portal-superior mesenteric vein glucose sensing. *Diabetes* 57: 1380–1386, 2008.
65. Sayed N, Baskaran P, Ma X, van den Akker F, and Beuve A. Desensitization of soluble guanylyl cyclase, the NO receptor, by S-nitrosylation. *Proc Natl Acad Sci USA* 104: 12312–12317, 2007.
66. Schwartz MW, Woods SC, Porte D Jr., Seeley RJ, and Baskin DG. Central nervous system control of food intake. *Nature* 404: 661–671, 2000.
67. Singh P, Jain A, and Kaur G. Impact of hypoglycemia and diabetes on CNS: correlation of mitochondrial oxidative stress with DNA damage. *Mol Cell Biochem* 260: 153–159, 2004.
68. Song Z, Levin BE, McArdle JJ, Bakhos N, and Routh VH. Convergence of pre- and postsynaptic influences on glucosensing neurons in the ventromedial hypothalamic nucleus. *Diabetes* 50: 2673–2681, 2001.
69. Song Z and Routh VH. Differential effects of glucose and lactate on glucosensing neurons in the ventromedial hypothalamic nucleus. *Diabetes* 54: 15–22, 2005.
70. Song Z and Routh VH. Recurrent hypoglycemia reduces the glucose sensitivity of glucose-inhibited neurons in the ventromedial hypothalamus nucleus. *Am J Physiol Regul Integr Comp Physiol* 291: R1283–R1287, 2006.
71. Stamler JS, Toone EJ, Lipton SA, and Sucher NJ. (S)NO signals: translocation, regulation, and a consensus motif. *Neuron* 18: 691–696, 1997.
72. Stoddard-Apter SL, Bergdall VK, Townsend DW, and Levin BE. Plasma catecholamines associated with hypothalamically-elicited defense behavior. *Physiol Behav* 36: 867–873, 1986.
73. Tkacs NC, Dunn-Meynell AA, and Levin BE. Presumed apoptosis and reduced arcuate nucleus neuropeptide Y and pro-opiomelanocortin mRNA in non-coma hypoglycemia. *Diabetes* 49: 820–826, 2000.
74. Vannucci RC and Vannucci SJ. Hypoglycemic brain injury. *Semin Neonatol* 6: 147–155, 2001.
75. Vannucci SJ. Developmental expression of GLUT1 and GLUT3 glucose transporters in rat brain. *J Neurochem* 62: 240–246, 1994.
76. Wang R, Liu X, Hentges ST, Dunn-Meynell AA, Levin BE, Wang W, and Routh VH. The regulation of glucose-excited neurons in the hypothalamic arcuate nucleus by glucose and feeding-relevant peptides. *Diabetes* 53: 1959–1965, 2004.

77. Watts AG and Donovan CM. Sweet talk in the brain: Glucosensing, neural networks, and hypoglycemic counter-regulation. *Front Neuroendocrinol* 31: 32–43, 2010.
78. Yu HM, Xu J, Li C, Zhou C, Zhang F, Han D, and Zhang GY. Coupling between neuronal nitric oxide synthase and glutamate receptor 6-mediated c-Jun N-terminal kinase signaling pathway via S-nitrosylation contributes to ischemia neuronal death. *Neuroscience* 155: 1120–1132, 2008.
79. Zeitlin PL. Is it go or NO go for S-nitrosylation modification-based therapies of cystic fibrosis transmembrane regulator trafficking? *Mol Pharmacol* 70: 1155–1158, 2006.
80. Zhang J, Xie Z, Dong Y, Wang S, Liu C, and Zou MH. Identification of nitric oxide as an endogenous activator of the AMP-activated protein kinase in vascular endothelial cells. *J Biol Chem* 283: 27452–27461, 2008.

Address correspondence to:

*Dr. Xavier Fioramonti*

*Department of Pharmacology and Physiology*

*New Jersey Medical School*

*P.O. Box 1709*

*Newark, NJ 07101-1709*

*E-mail: fioramxa@umdnj.edu*

Date of first submission to ARS Central, May 26, 2010; date of acceptance, June 2, 2010.

### Abbreviations Used

AMPK = AMP-activated kinase  
 APF = action potential frequency  
 ARC = arcuate nucleus  
 CFTR = cystic fibrosis transmembrane regulator  
 cGMP = cyclic guanosine monophosphate  
 CRR = counterregulatory response  
 eNOS = endothelial NOS  
 GE = glucose-excited  
 GI = glucose-inhibited  
 GK = glucokinase  
 GLUT = glucose transporter  
 GSNs = glucose-sensing neurons  
 HAAF = hypoglycemia-associated autonomic failure  
 $K_{ATP}$  = ATP-sensitive potassium channel  
 MCT = monocarboxylate transporter  
 nNOS = neuronal NOS  
 NO = nitric oxide  
 NOS = NO synthase  
 NPY = neuropeptide Y  
 RH = recurrent hypoglycemia  
 ROS = reactive oxygen species  
 sGC = soluble guanylate cyclase  
 T1DM = type 1 diabetes mellitus  
 VMH = ventromedial hypothalamus  
 VMN = ventromedial nucleus

