



HAL
open science

Discrete element method, a tool to investigate complex thermo mechanical behaviour: application to friction stir welding

Inigo Terreros, Ivan Iordanoff, Jean-Luc Charles, Dominique Coupard, Serge Tcherniaieff

► To cite this version:

Inigo Terreros, Ivan Iordanoff, Jean-Luc Charles, Dominique Coupard, Serge Tcherniaieff. Discrete element method, a tool to investigate complex thermo mechanical behaviour: application to friction stir welding. Discrete element method, a tool to investigate complex thermo mechanical behaviour, 2009, 2 (1), pp.573-576. 10.1007/s12289-009-0433-9 . hal-01133605

HAL Id: hal-01133605

<https://hal.science/hal-01133605>

Submitted on 1 Apr 2015

HAL is a multi-disciplinary open access archive for the deposit and dissemination of scientific research documents, whether they are published or not. The documents may come from teaching and research institutions in France or abroad, or from public or private research centers.

L'archive ouverte pluridisciplinaire **HAL**, est destinée au dépôt et à la diffusion de documents scientifiques de niveau recherche, publiés ou non, émanant des établissements d'enseignement et de recherche français ou étrangers, des laboratoires publics ou privés.



Science Arts & Métiers (SAM)

is an open access repository that collects the work of Arts et Métiers ParisTech researchers and makes it freely available over the web where possible.

This is an author-deposited version published in: <http://sam.ensam.eu>
Handle ID: <http://hdl.handle.net/10985/9414>

To cite this version :

Inigo TERREROS, Ivan IORDANOFF, Jean-Luc CHARLES, Dominique COUPARD, Serge TCHERNIAIEFF - Discrete element method, a tool to investigate complex thermo mechanical behaviour: application to friction stir welding - Discrete element method, a tool to investigate complex thermo mechanical behaviour - Vol. 2, n°1, p.573-576 - 2009

Any correspondence concerning this service should be sent to the repository
Administrator : archiveouverte@ensam.eu

DISCRETE ELEMENT METHOD, A TOOL TO INVESTIGATE COMPLEX THERMO MECHANICAL BEHAVIOUR: APPLICATION TO FRICTION STIR WELDING

I. Terreros*, I. Iordanoff, J.L. Charles, D. Coupard, S. Tcherniaieff

Arts et Métiers ParisTech, Bordeaux1, LAMEFIP Esplanade des Arts et Métiers, 33405 Talence, FRANCE

URL: www.lamef.bordeaux.ensam.fr

ABSTRACT: In material forming or cutting, the contact zone between the tool and the working piece is often very difficult to analyse because of diverse local phenomena. In the special case of FSW, a specific difficulty is the study of material mixing. In this work, the Discrete Element Method is applied as a tool to understand/propose/confirm physical scenarii involved in FSW process. A simple micro behaviour law that takes into account thermal, mechanical and material aspects is proposed and a two dimensional simulation based on this law is presented. The first results show qualitatively good agreement with real nuggets observations. One of the main advantages of DEM approach is the simplicity of the local input law compared with laws proposed at the continuous media mechanics level. Nevertheless, numerical aspect must be improved to carry out three dimensional simulations with reasonable calculation times.

KEYWORDS: Discrete Element Method, Friction Stir Welding.

1 INTRODUCTION

Friction Stir Welding (FSW) is a process invented at The Welding Institute (TWI) in the early 90's. This process allows to join metals without fusion or filler materials. The welds are created by the combined action of frictional heating and mechanical deformation due to a rotating tool.

At the present time the approach used to simulate FSW process are based on the Finite Elements Method (FEM) or on the Finite Differences Method (FDM) [1–3]. With those methods it is possible to simulate temperature fields [1–3], strain and residual strain fields [1, 2], heat source distribution, plastically-deformed zone and material flow while looking at deformation velocities [3]. We can also carry out simulations of the material flow using a fluid-mechanics based approach [4].

Despite the efforts done, to achieve an accurate simulation of material flow when it is between a solid state and a “slurry” state is still a delicate problem to manage with classic FEM. A possible suggestion is to use the DEM for the modelling, because of the exceptional skills of this method to carry out calculations of solid flows. There are works that demonstrate the validity of DEM to simulate and understand wear problems (in this field the difficulty to simulate the flux has been always a big challenge) like [5–8], among others.

2 NUMERICAL TOOL

2.1 GENERAL DESCRIPTION

The method described is based on smooth particle dynamic method. The material is considered as a set of discrete spheres that move under a force field. The forces are contact forces to simulate multi-body interactions. Their magnitudes depend on a thermomechanical law which will be briefly described in next paragraphs. Particle movements are calculated using an explicit algorithm to integrate the dynamic Newton law.

It is vital to remember that each sphere doesn't represent any kind of particle, but all the spheres as a whole represent the behaviour of the material.

2.2 THERMOMECHANICAL LAW

As it is said above, the magnitude of contact forces is given by a thermomechanical law. First of all mechanical aspect is described, then thermal aspect, and finally a description of how mechanical and thermal aspects are linked will be given.

2.2.1 Mechanical part

The particles' (spheres in this study) interaction laws define micro mechanical properties of the material. Every particle is subjected to contact force. This force acts only when two particles geometrically interact and it is divided into three parts: repulsion, adhesion (both are energy conservative) and energy dissipation. Geometrical interaction δ allows the force calculation (Figure 1).

*Postal address: Pio XII, 1, 5C, 01400, Laudio, Araba, Spain. Phone: +34 670 749 016. e-mail: iterrerosgalindez@gmail.com

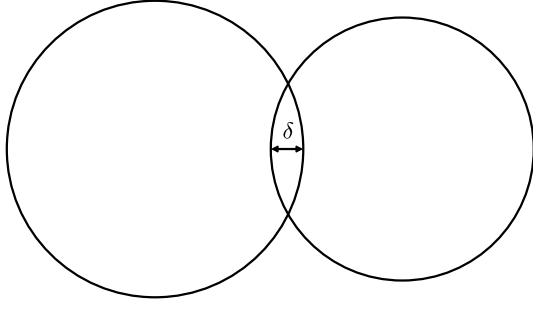


Figure 1: Geometrical interaction

- Repulsion is represented by a linear spring, whose stiffness is K . Repulsive force F_r is:

$$F_r = K \cdot \delta \quad (1)$$

- Adhesion has been simplified to a parameter γ which depends on particles' temperature and accumulated displacement, $\gamma = \gamma(T, U)$. Relationship between γ , T and U is given in the section 2.2.3.

$$F_a = \gamma = \gamma(T, U) \quad (2)$$

- The energy dissipation in the contact is due to the damping force written as:

$$F_d = 2\alpha\sqrt{K \cdot M_{ij}} \cdot \dot{\delta} \quad (3)$$

Where α is the damping coefficient (< 1), $\dot{\delta}$ the impact speed and M_{ij} the equivalent mass of the contact.

The sum of the interaction forces is:

$$F_{contact} = -K \cdot \delta + \gamma - 2\alpha\sqrt{K \cdot M_{ij}} \cdot \dot{\delta} \quad (4)$$

2.2.2 Thermal part

For the thermal part, model proposed by Richard *et al.* [6] has been implemented. However, some modifications to reach the purpose of modelling FSW process have been carried out. The thermal analysis is divided in two parts, heat creation and heat diffusion.

It is supposed that all the dissipated mechanical energy is transformed into thermal energy. Following the model of Richard, created thermal power is described like:

$$Q_{ij} = 2\alpha\sqrt{K \cdot M_{ij}} \cdot \dot{\delta}^2 \quad (5)$$

Assuming that heat is equally distributed between particles i and j , the temperature rise of each particle because of thermal energy creation in Δt time interval is described by the following equation:

$$dT_i = \frac{0,5 \cdot Q_{ij} \Delta t}{\rho_i c_{pi} V_i} \quad (6)$$

At the moment of analysing heat diffusion, one assumption that differs from reference [6] is taken:

- The transmission surface between two spheres is supposed to be $4R_m^2$ (a $2R_m \times 2R_m$ square), where R_m is the average radius of spheres, instead of the contact surface between both of them.

This assumption is closer from a continuum medium like FSW than hypotheses from [6], which try to describe a real granular field.

Then, the temperature rise of a particle is:

$$T_i^+ = T_i^- + \sum_j dT_{ij}^+ \quad (7)$$

Where T_i^+ is the temperature of a particle i at the moment $t + \Delta t$, T_i^- is the temperature of the same particle at time t and dT_{ij}^+ is the thermal contribution of each j particle to i during Δt period.

From the viewpoint of discrete elements dT_{ij}^+ is defined as:

$$dT_{ij}^+ = \frac{4\lambda_{ij} R_m \Delta t (T_j^- - T_i^-)}{\rho_{ij} c_{pij} V_{ij}} \quad (8)$$

Where ρ_{ij} , c_{pij} , V_{ij} and λ_{ij} are the equivalent density, equivalent heat capacity, equivalent volume and equivalent conductivity of particle i respectively.

Mixing equations 7 and 8, the equation that explains the temperature rise of particle i due to contact with the j particles around is:

$$T_i^+ = T_i^- + \Delta t \sum_j \frac{4\lambda_{ij}}{\rho_{ij} c_{pij} V_{ij}} \cdot R_m (T_j^+ - T_i^-) \quad (9)$$

2.2.3 Coupling of mechanical and thermal aspects

Once described thermal and mechanical parts, the micro-mechanical law which links both of them will be explained. The following analysis is based on Aluminium alloy Al 2017-T451.

This analysis micro-structural changes due to temperature and displacement. When material's temperature rises, the precipitates that harden it disappear and mechanical properties of material become weaker. Moreover, the hardest material is located near the trajectory of the pin of the tool (nugget), that is, the most displaced material which has the smallest grain-size.

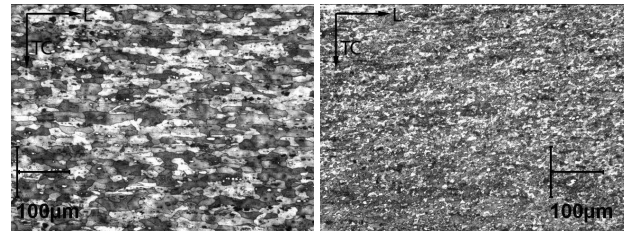


Figure 2: Grain-size of raw material and nugget

So, a relationship among material's temperature cycle, grain size, displacement and hardness can be established. Having in mind those ideas, a surface that describes the cohesion between particles depending on the cycles mentioned above has been created. The curve A from Figure 3 describes the first approach to that surface.

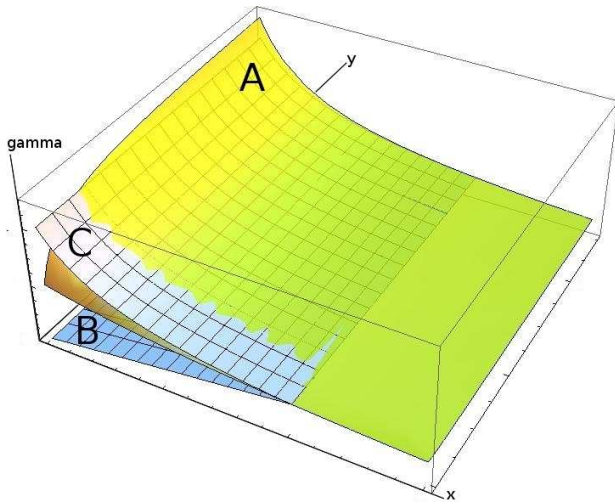


Figure 3: Adhesion forces

In axes x and y temperature and displacement are shown respectively. The third axe represents the hardness. The adhesion force of the contact between two particles is taken from this graphic and it is supposed proportional to hardness.

There are two surfaces apart A, which describes the law mentioned before. The surface marked as B represents the adhesion force between two particles of different plates and the other surface, marked as C, represents the adhesion between two particles of raw material of the same plate. Initially all the contacts between particles are classed in one of those two surfaces. Cohesion in the contact of particles of different plates will be null if they are cold, independently of the displacement. Nevertheless, cohesion will rise with the temperature until this curve crosses with A. From this moment the contact between the two particles won't be described by B curve but by A. The same happens with C. Equal material's particles' cohesion will be inversely proportional to the temperature until the temperature reach a limit. Here again we pass to the other curve to modell the adhesion force. The main idea behind that behaviour law is that adhesion decreases with temperature and increases with displacement.

The results of the modelling of FSW with the proposed micromechanical law show qualitatively good agreement with real nuggets observations, as it will be shown in section 3.

2.3 NUMERICAL INTEGRATION

A Verlet velocity algorithm is chosen to integrate the velocities and new positions of spheres over a small time step Δt while accelerations have been calculated thanks to Newton laws described above [6, 8].

2.4 GEOMETRY AND BOUNDARY CONDITIONS

For this work simulations with a two dimensional model have been carried out. The two walls surrounding the field

are fixed and they are at ambient temperature.

3 RESULTS

3.1 MECHANICAL PROPERTIES

Figure 4 shows experimental hardness of Al 2017-T451 across the weld at the top and a cross section taken from the results of the simulations carried on at the bottom. The meaning of coloured parts will be explained in the next paragraph.

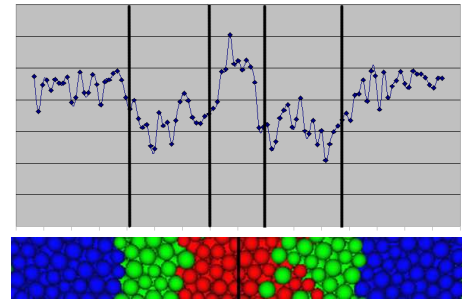


Figure 4: Comparison of hardness & cohesion

Figure 5 shows the cohesion among the spheres after the simulation. There are three different areas divided by colours: Blue coloured spheres have the cohesion of raw material, cohesion is lower among spheres coloured in green and higher among those in red.

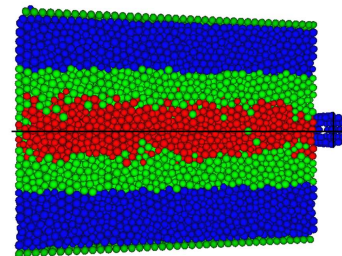


Figure 5: Cohesion

Numerical simulation is qualitatively in accordance with experiences. The center of the weld is harder than raw material and there are two bands composed by weaker material surrounding it.

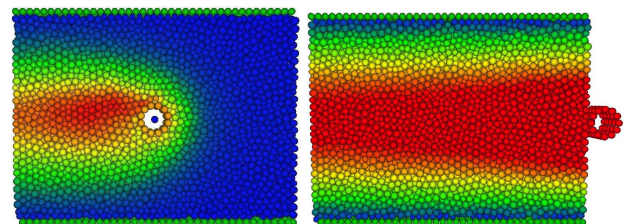


Figure 6: Temperature fields

3.2 THERMAL PROPERTIES

Simulated temperature contours have at the beginning good agreement with works like [2] and [9]. Nevertheless, the current model has problems to dissipate heat, and temperature fields have tendency to have parallel isotherm lines, as shown in Figure 6. This problem may be solved with the solutions proposed in section 4.

3.3 MATERIAL MIXING

The Discrete Element Method allows also to see how materials of both plates are mixed while tooling. Figure 7 is an example of that. The field before tooling is shown in the first picture and second one represents the field after the process.

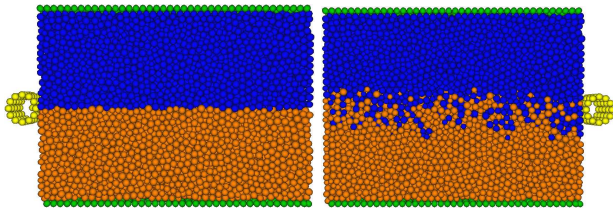


Figure 7: Material mixing

4 CONCLUSIONS AND PERSPECTIVES

Looking at the results one can conclude that:

- Discrete Element Method models qualitatively good FSW process as similarities between real and experimental hardness, weld characteristics and temperature fields have been obtained.
- It is necessary to develop thermal boundary conditions because in the present work heat is evacuated only through two walls and this is not realistic.
- The proposed micromechanical law must be validated.
- Calculation time must be reduced.

In order to reduce the calculation time, a combination among Finite Element Method, Dynamic Discrete Element Method and Static Discrete Element Method is proposed. Effectively, FEM allows us to calculate rapidly thermal effects in areas where the movement of particles is always insignificant; the current dynamic DEM in areas where particles' movement is being important can be used; finally a static DEM which doesn't search contacts among particles in areas where movements are negligible can be used. In fact, 80% of calculation time is spend in searching contacts, and may be reduced using this method. In Figure 8 we can see a schematic draw of this method.

REFERENCES

- [1] Ch. Desrayaud, P. Heurtier, D. Allehaux, and F. Montheillet. Thermomechanical and

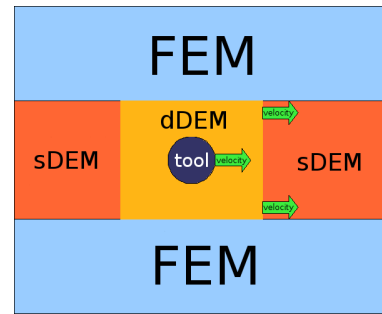


Figure 8: Proposed method

- microstructural modelling of the Friction Stir Welding process. In *5th International Friction Stir Welding Symposium, Metz, France, September 2004*. ISBN 1-903761-04-2.
- [2] R.W. McCune, H. Ou, C.G. Armstrong, and M. Price. Modelling Friction Stir Welding with the Finite Element Method - a comparative study. In *5th International Friction Stir Welding Symposium, Metz, France, September 2004*. ISBN 1-903761-04-2.
- [3] F. Palm, U. Henneböhle, V. Erofeev, E. Kerpuchin, and O. Zaitzev. Improved verification of FSW-process modelling relating to the origin of material plasticity. In *5th International Friction Stir Welding Symposium, Metz, France, September 2004*. ISBN 1-903761-04-2.
- [4] P. Heurtier, M.J. Jones, C. Desrayaud, J.H. Driver, F. Montheillet, and D. Allehaux. Mechanical and thermal modelling of Friction Stir Welding. *Journal of Materials Processing Technology*, 171:348–357, February 2006.
- [5] I. Iordanoff. Modélisation du Comportement Tribologique des 3e Corps Solides et Gazeux. *Laboratoire de Mécanique des Contacts et des Solides LaMCoS-UMR CNRS / INSA 5514 INSA de Lyon*, pages 31–51, 2004.
- [6] D. Richard, I. Iordanoff, M. Renouf, and Y. Berthier. Thermal study of the dry sliding contact with third body presence. *ASME Journal of Tribology*, 130, 2008.
- [7] B. Seve, I. Iordanoff, and Y. Berthier. Using Discrete Models to Simulate Solid Third Bodies: Influence of the Inter-granule Forces on the Macroscopical Behaviour. *Tribology series*, 39:361–368.
- [8] I. Iordanoff, A. Battentier, J. Neauport, and J.L. Charles. A Discrete Element Model to Investigate Sub Surface Damage due to surface polishing. *Tribology International*, 41:957–964, November 2008.
- [9] X.K. Zhu and Y.J. Chao. Numerical simulation of transient temperature and residual stresses in friction stir welding of 3041 stainless steel. *Journal of Materials Processing Technology*, 146:263–272, 2004.