



# YAK-AEROSIB: continental scale aircraft measurements of trace gases above Siberia

*Jean-Daniel Paris<sup>1</sup>, Boris D. Belan<sup>2</sup>, Gérard Ancellet<sup>3</sup>, Philippe Nédélec<sup>4</sup>, Mikhail Yu. Arshinov<sup>2</sup>, Arnaud Pruvost<sup>1</sup>, Antoine Berchet<sup>1</sup>, Emmanuel Arzoumanian<sup>1</sup>, Isabelle Pison<sup>1</sup>, Philippe Ciais<sup>1</sup>, Kathy Law<sup>3</sup>*

<sup>1</sup> *Laboratoire des Sci. du Climat et de l'Environnement, Gif, France*

<sup>2</sup> *Institute of Atmospheric Optics, SB-RAS/FASO, Tomsk, Russia*

<sup>3</sup> *LATMOS, Paris, France*

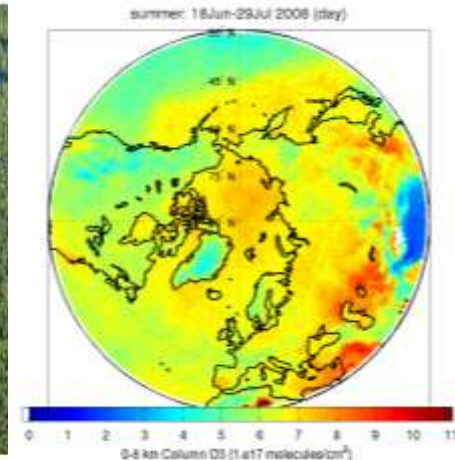
<sup>4</sup> *Laboratoire d'Aérodologie, Toulouse, France*

**MOZAIC Meeting, Toulouse, 13-15 May 2014**



## Airborne measurements bring new data

- Observe short lived **pollutants** (CO, O<sub>3</sub>, BC, fine particles) and discriminate local vs remote emissions to characterize long range transport across Eurasia.
- Validate **atmospheric models**, land flux models and **space-borne instruments** over Siberia, a vast under-documented region
- Characterize local sources, esp. **forest fires**, and their impact on regional air quality and in the Arctic.
- Better constrain the **sources and sinks of GHG** (CO<sub>2</sub>, CH<sub>4</sub>) in Siberia under a changing climate.
- Quantify the atmospheric impact of **CH<sub>4</sub>** emissions over the major natural (**wetlands**, **permafrost**) and anthropogenic sources

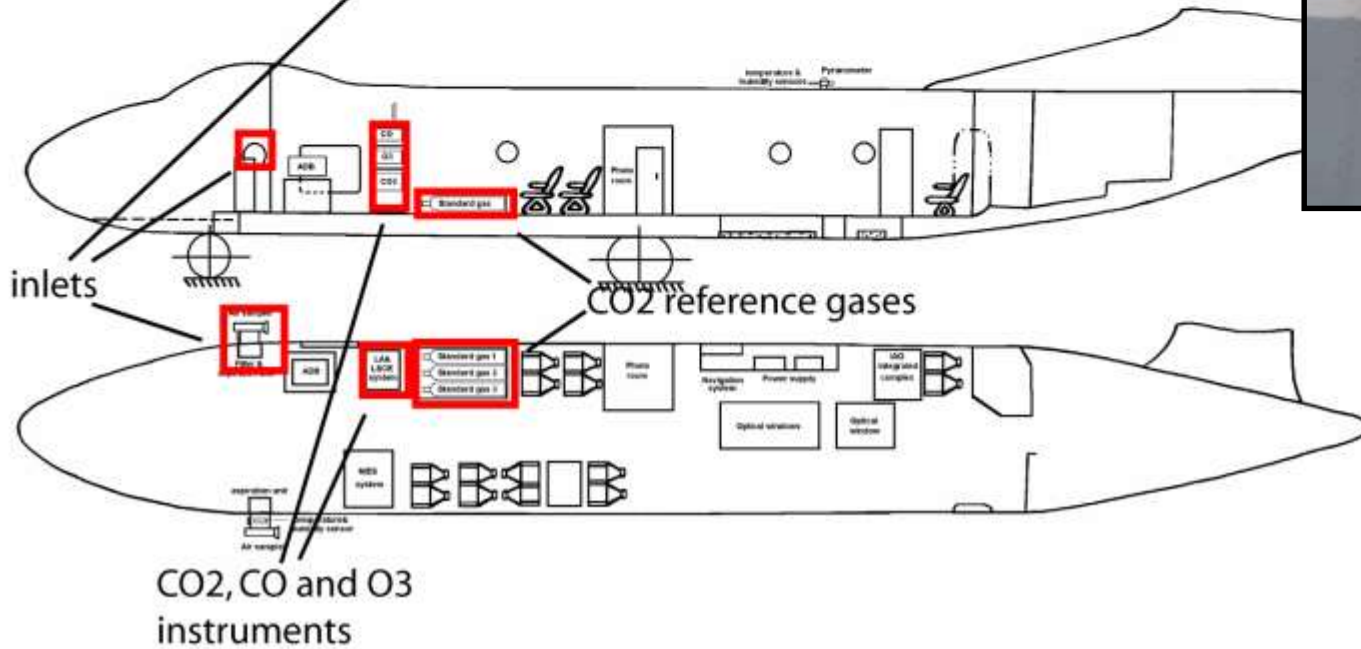


# Past milestones of the YAK-AEROSIB collaboration

- 2003: Creation of the first « GDRI »
- January 2006: First test flight
- April 2006: first campaign
- 2008: first Fr-Ru joint paper
- 2008: International Polar Year: POLARCAT
- June 2011: creation of the new structure (LIA):
  - France: LSCE, LATMOS, Laboratoire d'Aérodologie
  - Russia: Institute for Atmospheric Optics -SB-RAS
- July 2013: 8th campaign



# Aircraft: AN-30



Aircraft: Tu-134





# Russian team





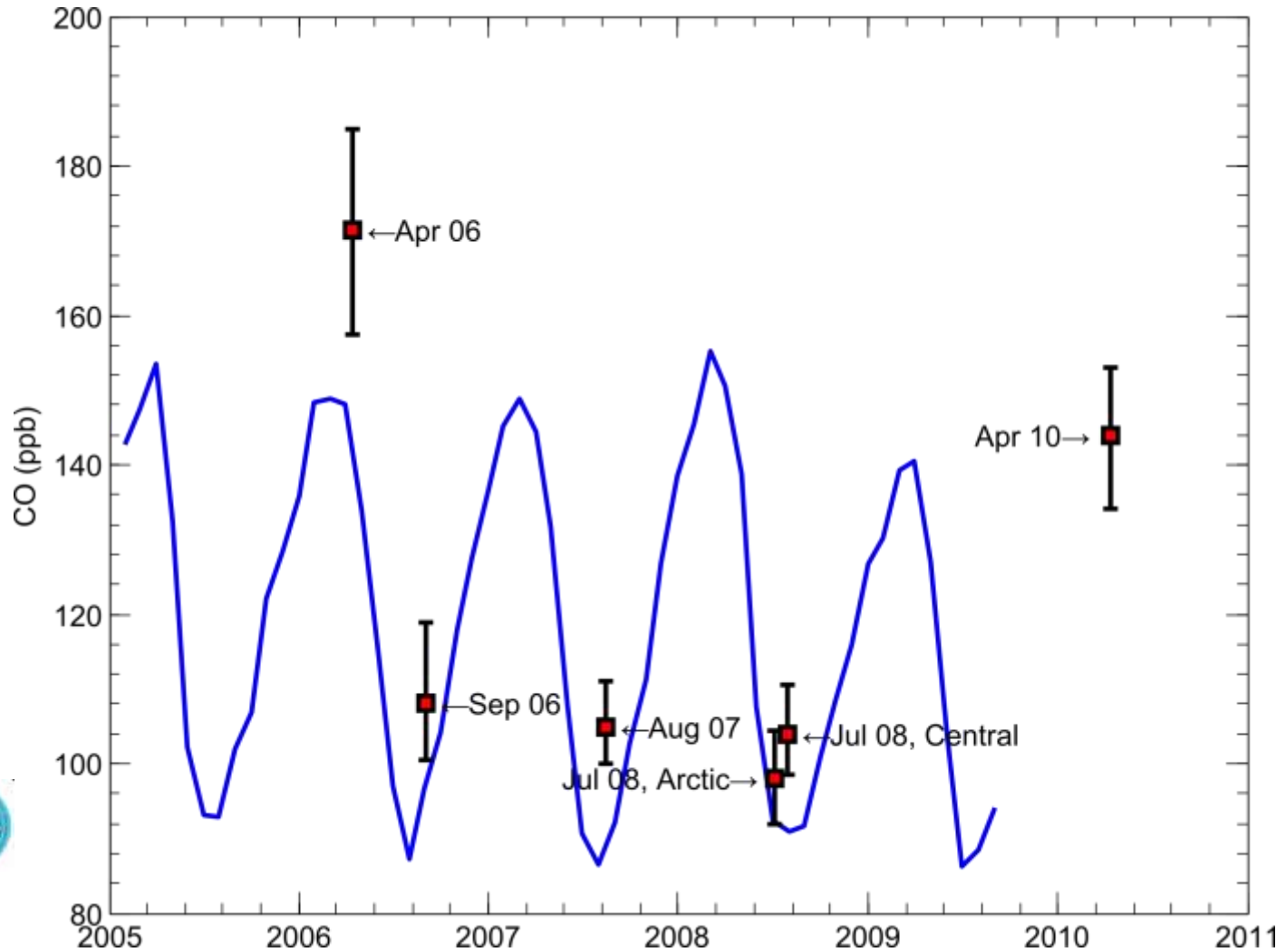
# CO statistics vs. Hemispheric background

- YAK always higher than MHD bg: transport of European & other emissions
- Apr 2010 relatively clean (more air from the Arctic, less from Europe and China)

YAK: median+IQR

MHD: Agage

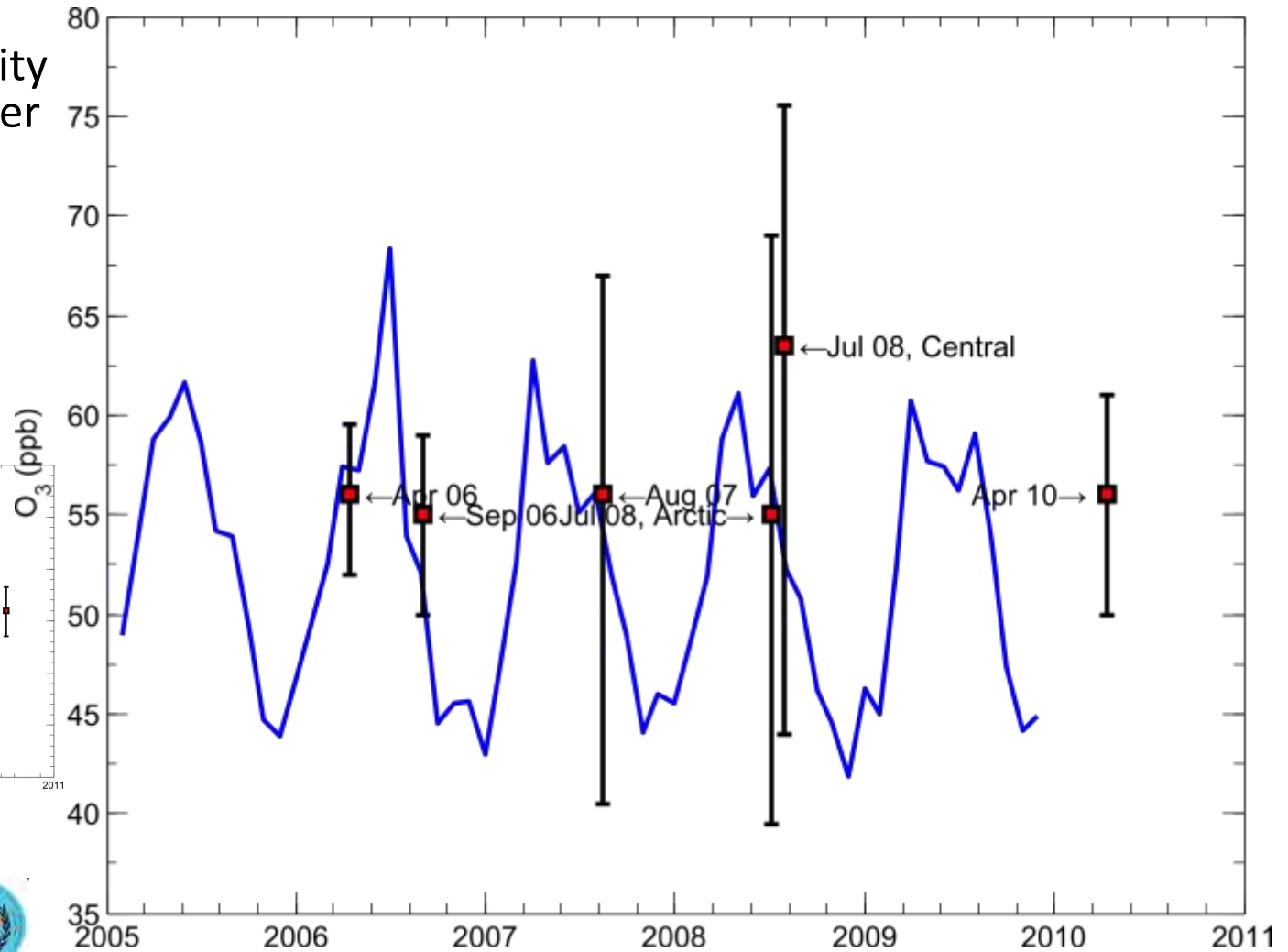
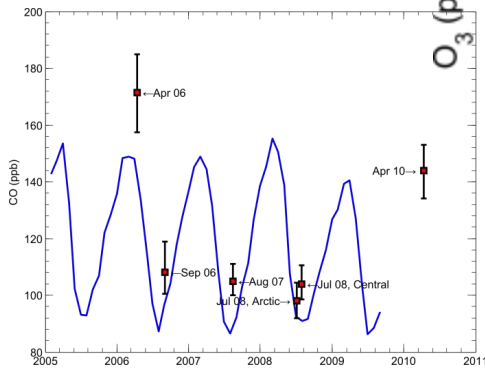
WMO WDCGG





# O<sub>3</sub> statistics in context

- High variability
- Reduced variability because of smaller vertical gradient compared to summer
- JFJ 3500m



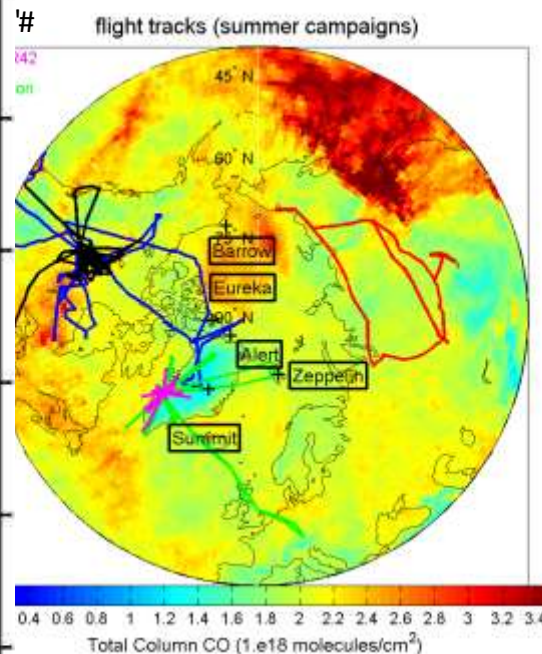
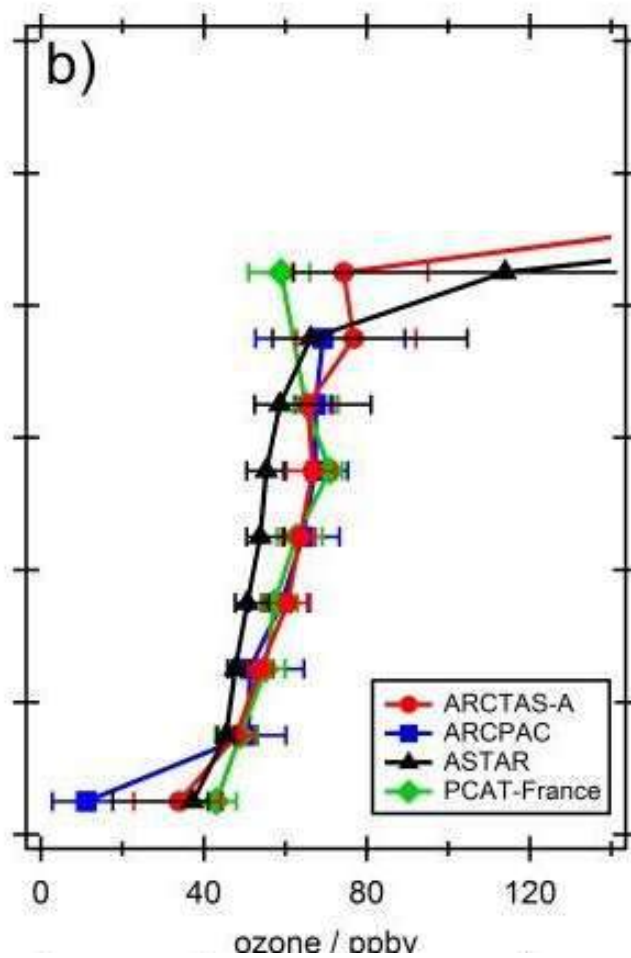
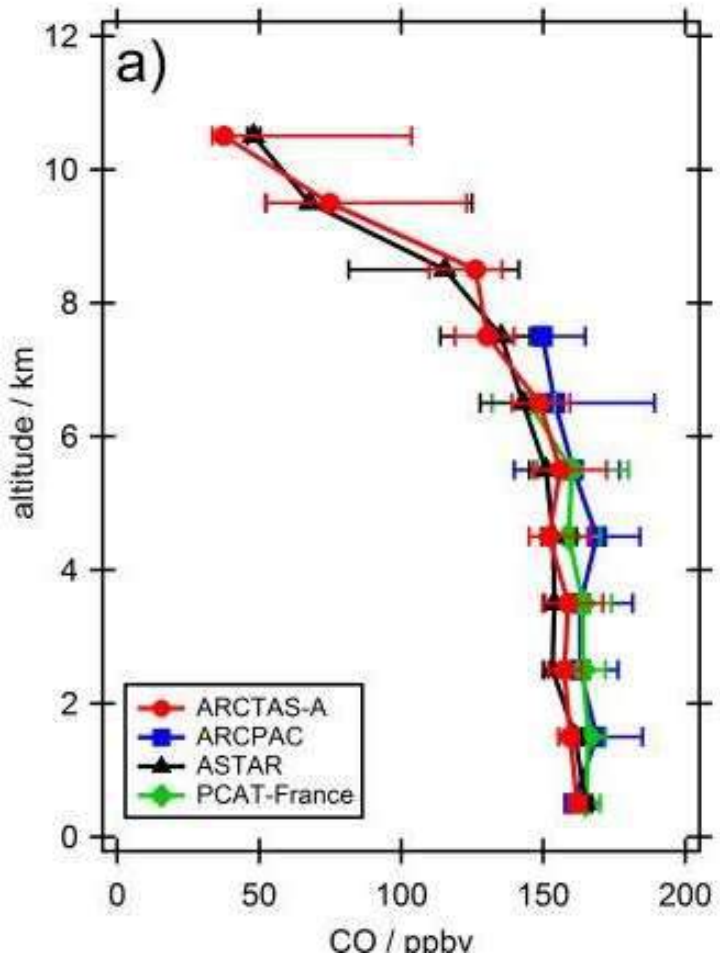
**YAK: median+IQR**

**JFJ: EMPA**

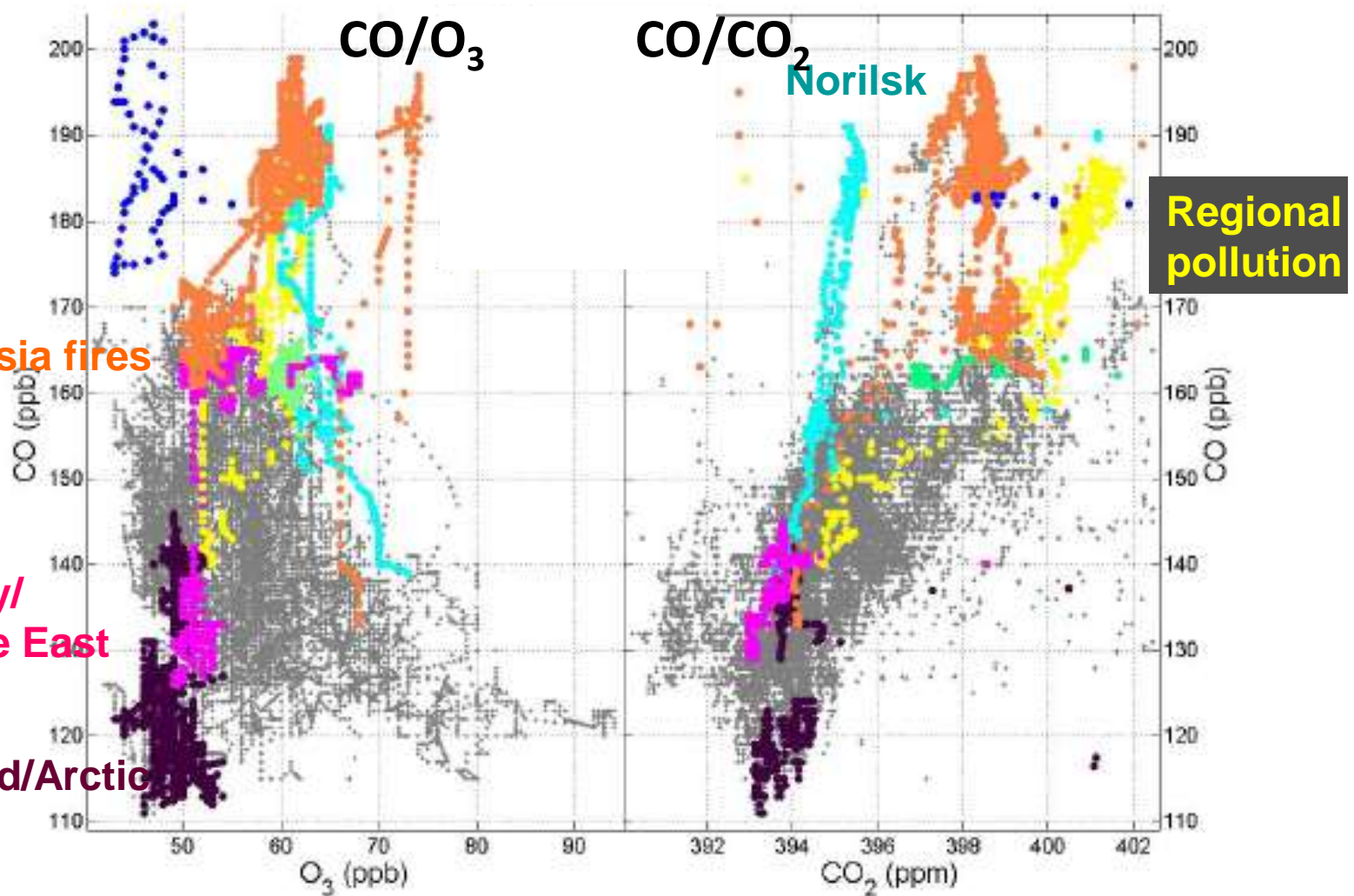
**WMO WDCGG**



# Summer 2010 aircraft measurements across the Arctic



# Diverse pollution origin over Siberia Case of the 2010 spring campaign



Western Russia fires

Turkey/  
Middle East

Iceland/Arctic

Norilsk

Regional  
pollution

Plume identification using FLEXPART 10 days backward  
plume

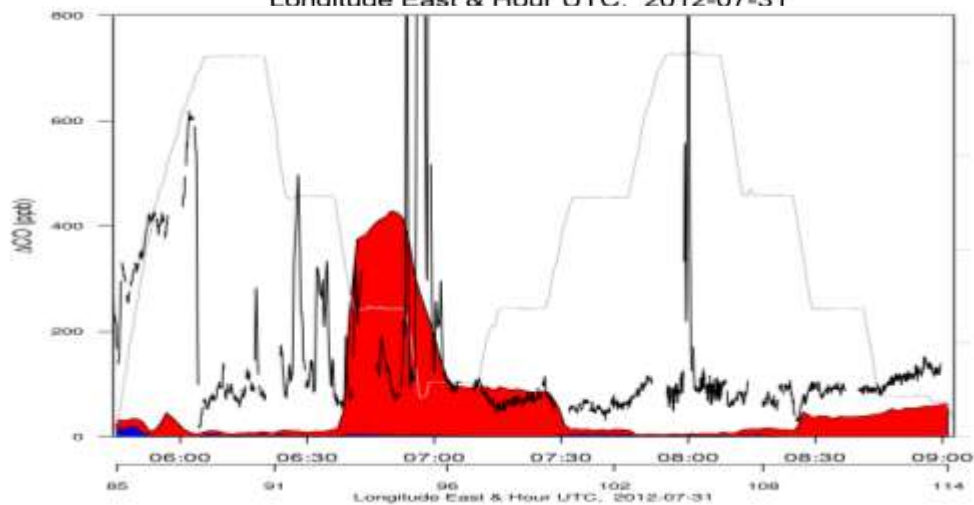
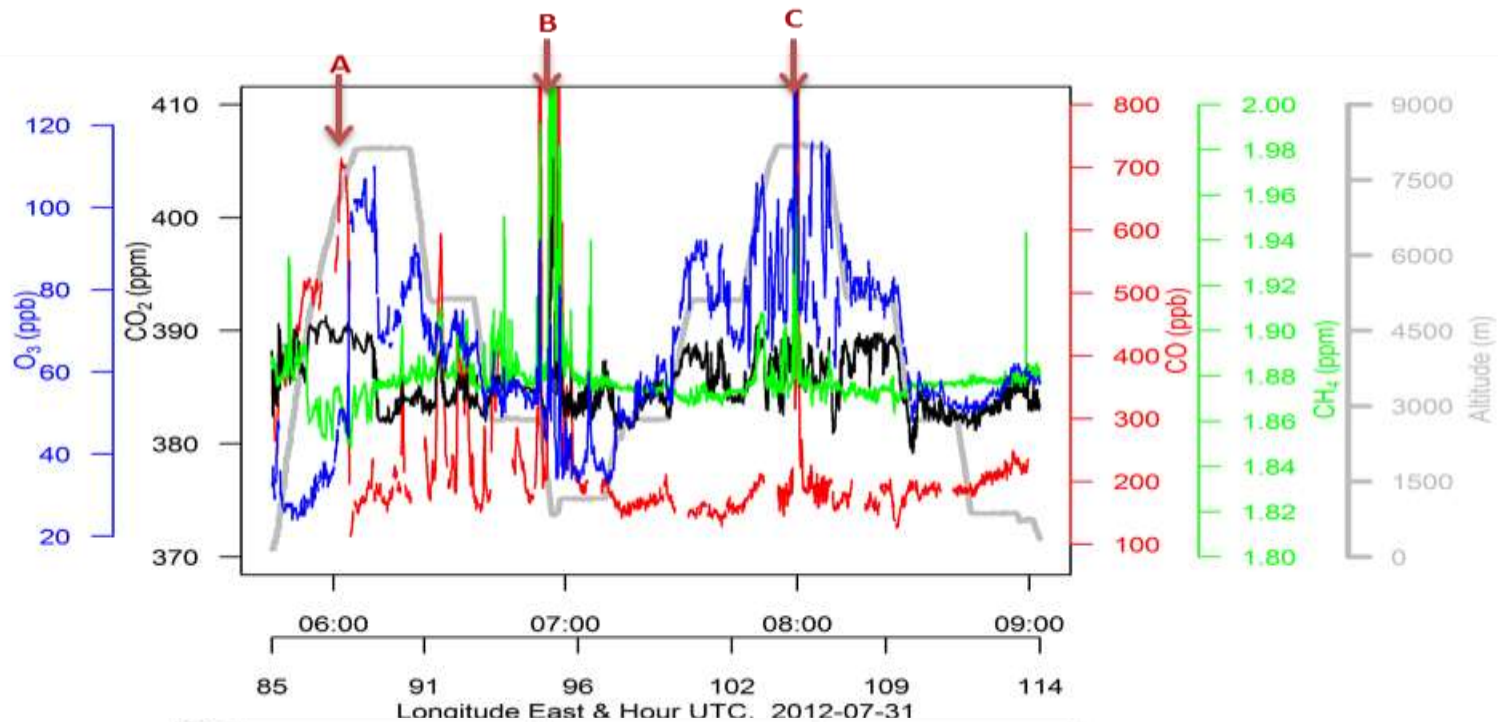
A. Berchet et al., Tellus B,  
2013

# Summer 2012 wildfires

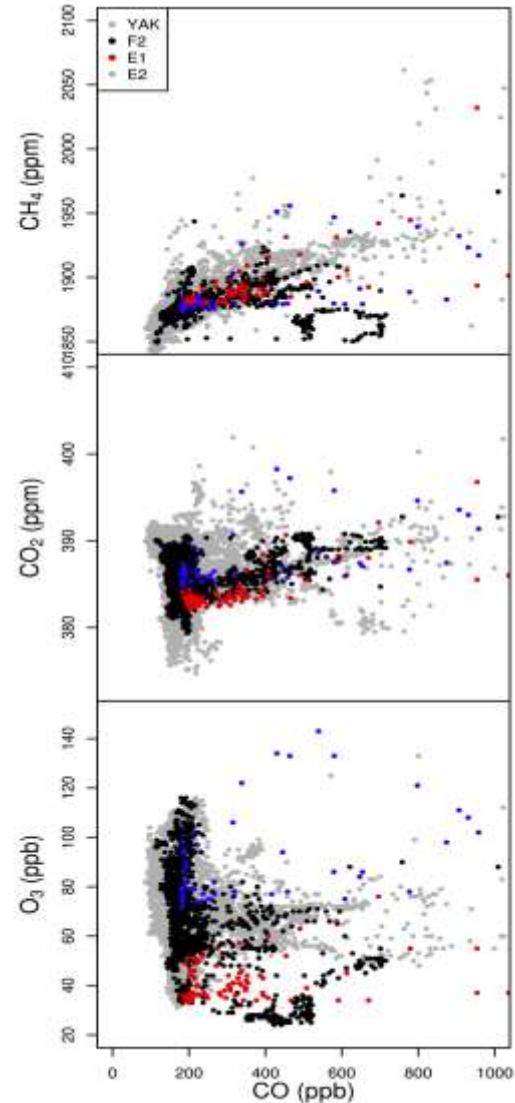
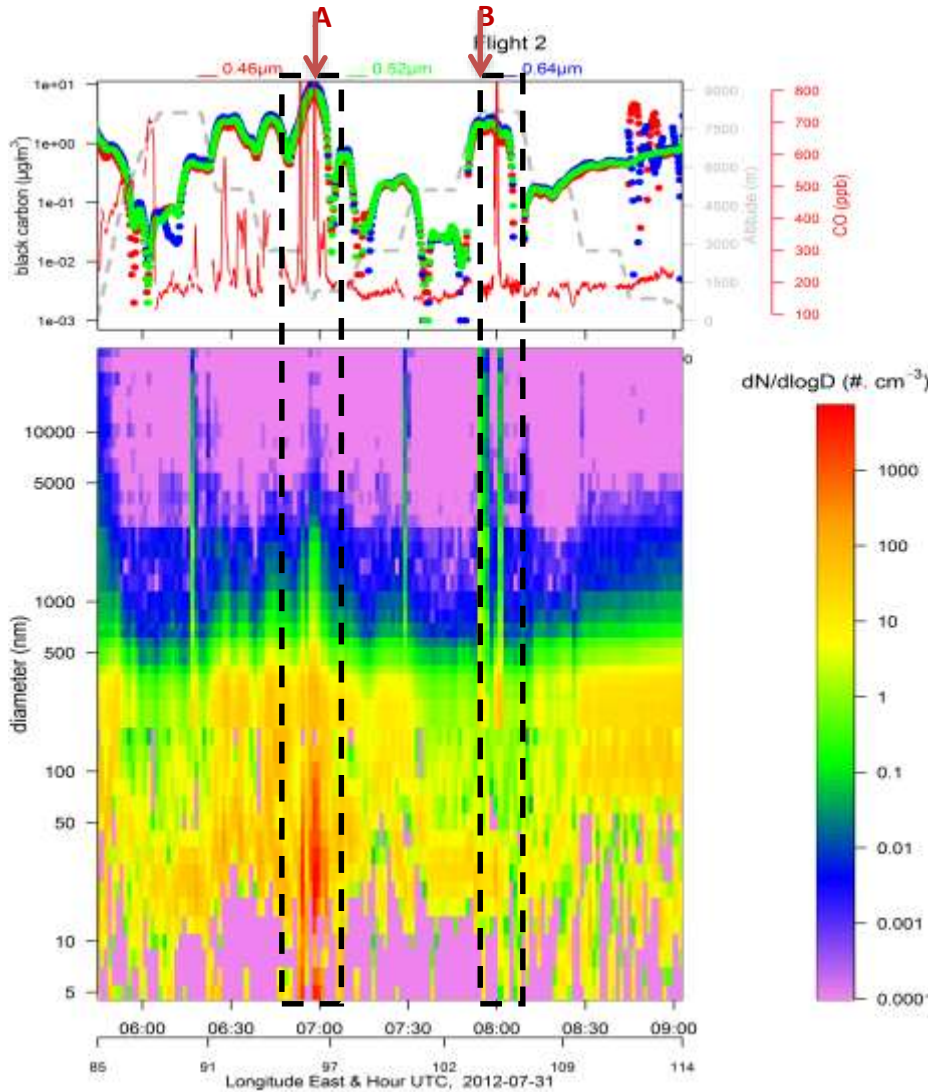




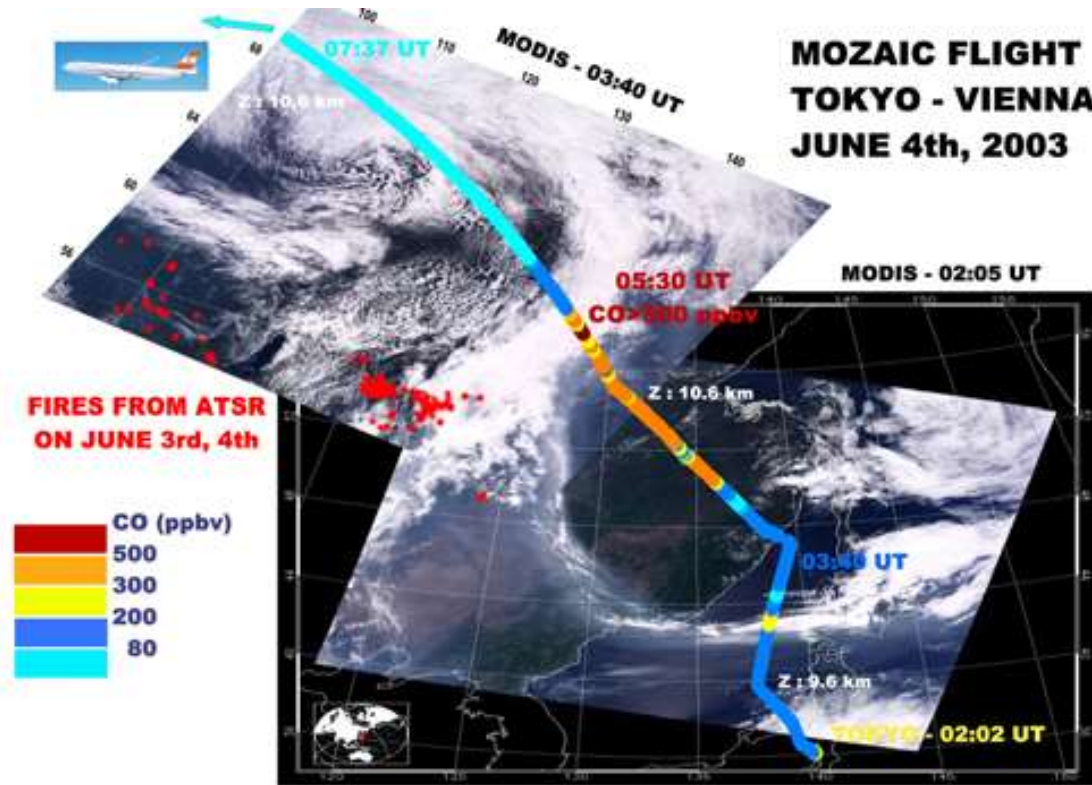
# July 2012, Flight 2



# High aerosols and CO on July 2012, fire-dominated Flight 2

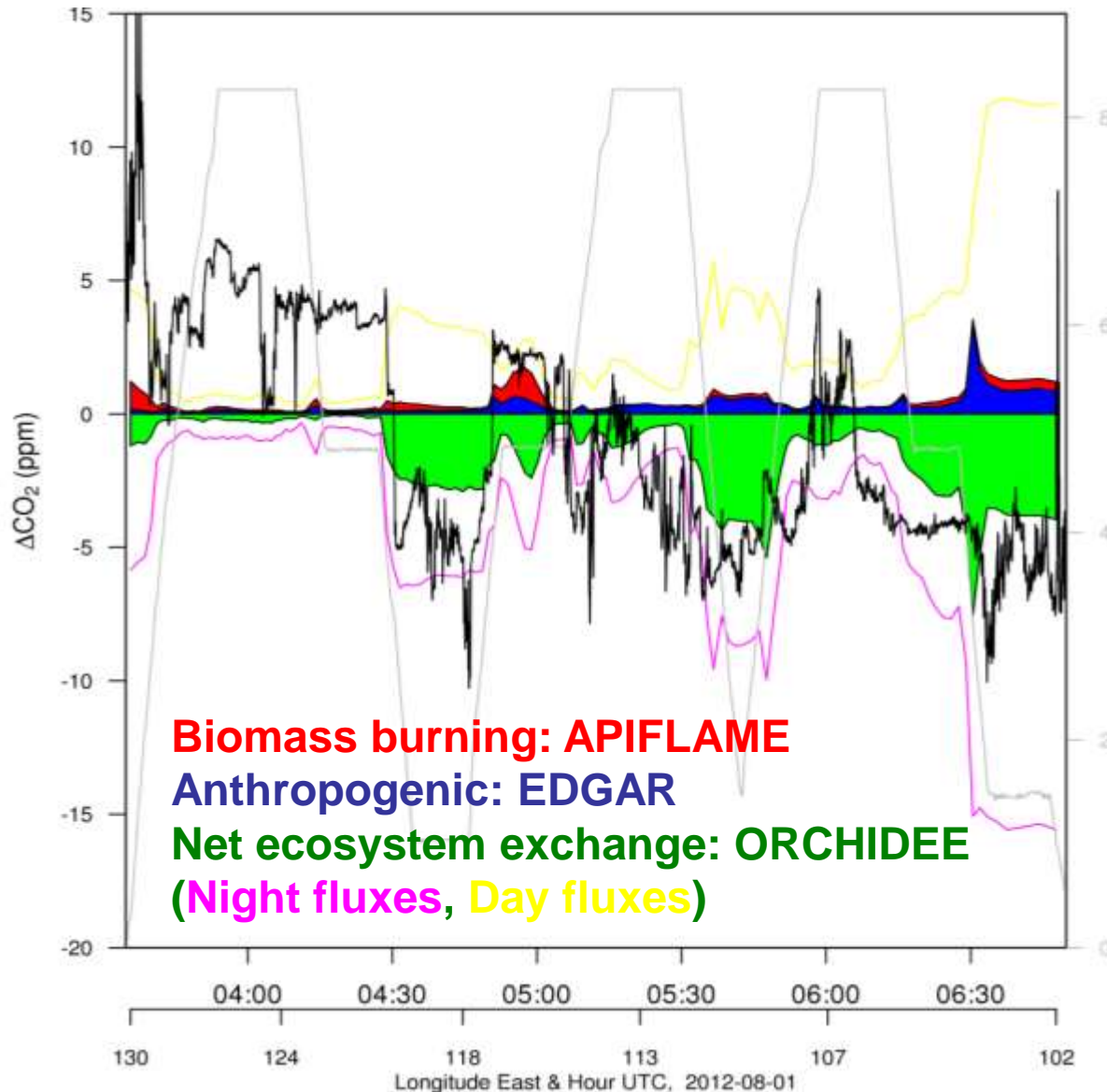


# Previous examples of strong fire emissions...



**Figure 3.** MOZAIC flight track color-coded with CO concentration (ppbv) from Tokyo to Vienna on June 4th, 2003, plotted over a composite of two MODIS satellite

# Simulated CO<sub>2</sub> in Flight 2, July 2012



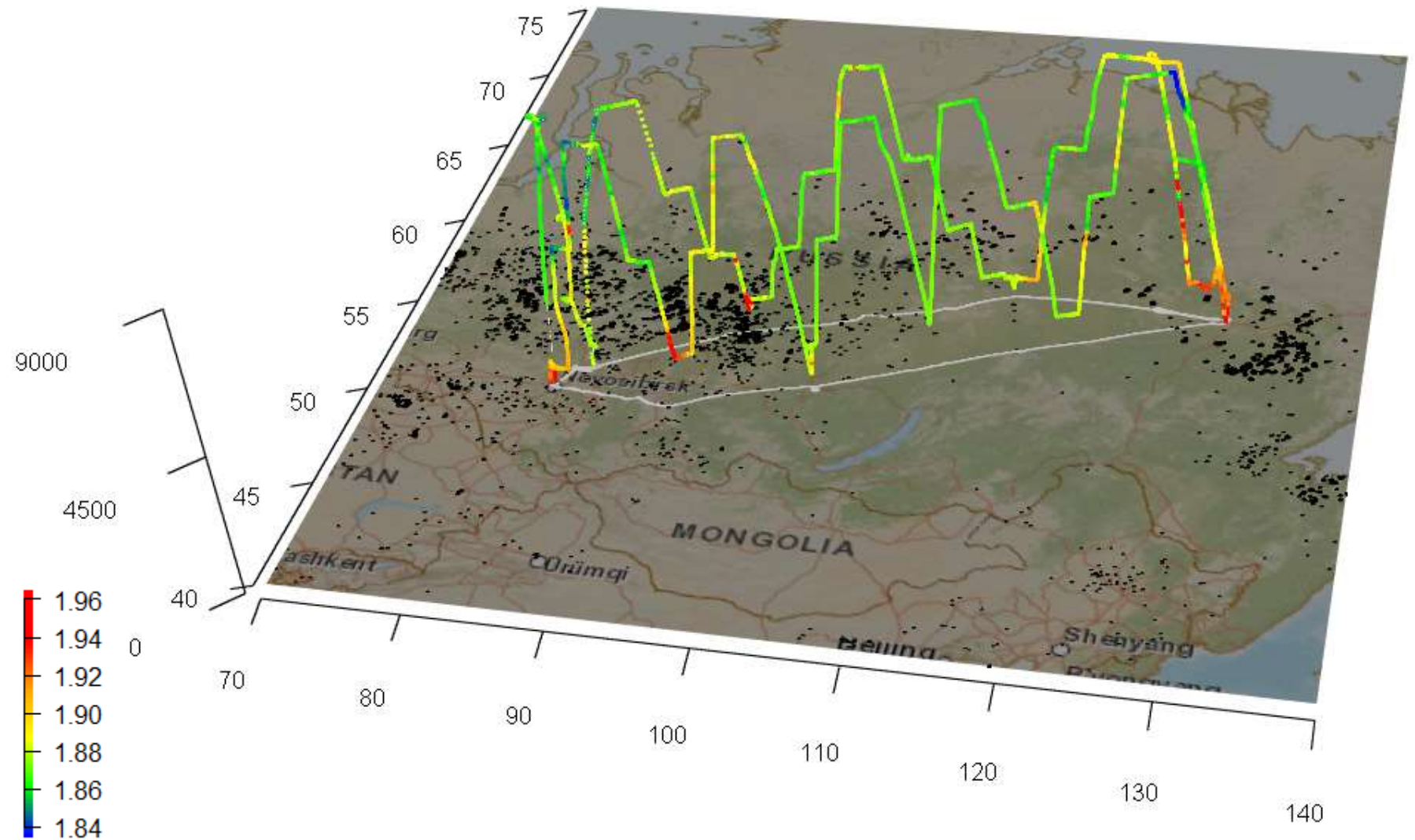
FLEXPART  
simulation over  
10 days

NEE attenuates  
fire signal

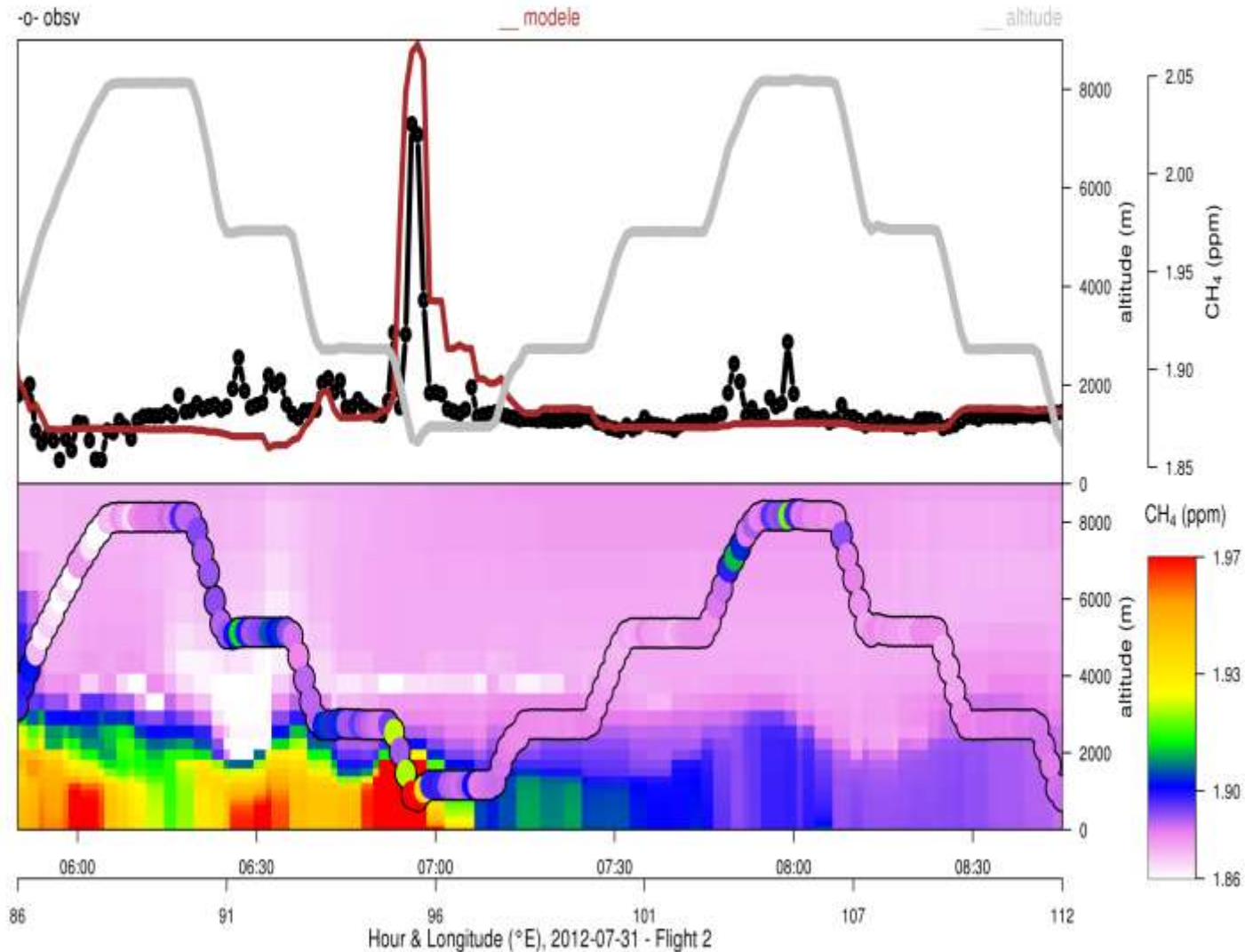
Impact on total  
emitted carbon,  
emission factor  
estimation



# CH<sub>4</sub> over Siberia, july-august 2012



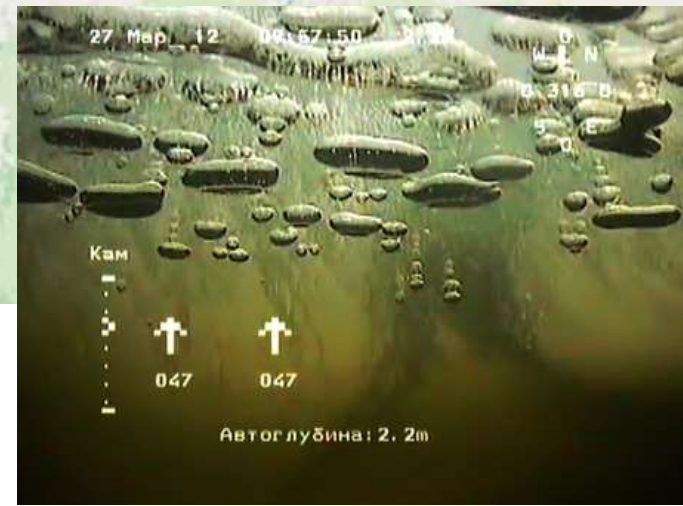
# Revising fire emissions for CH<sub>4</sub> over Siberia



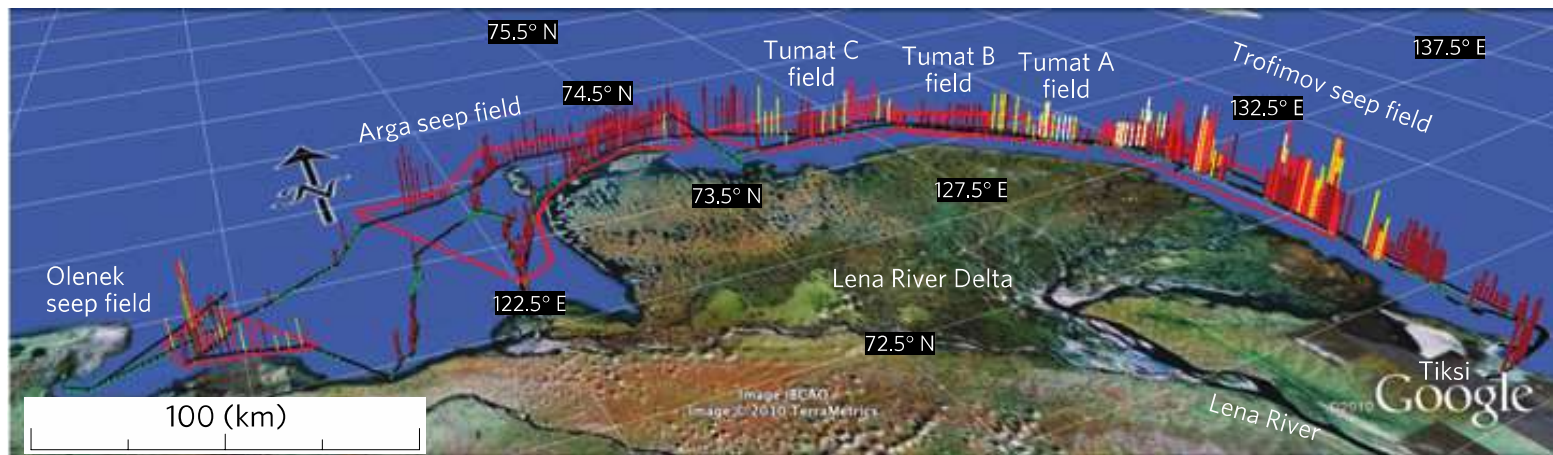
**E. Arzoumanian**

**Emissions: APIFLAME, S. Turquety, LMD**

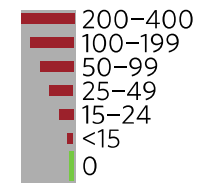
# Future plans



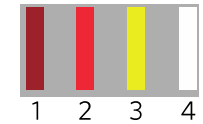
Shakhova et al., Nature Geosci. 2013



Seep density class (x10<sup>2</sup> km<sup>-2</sup>)

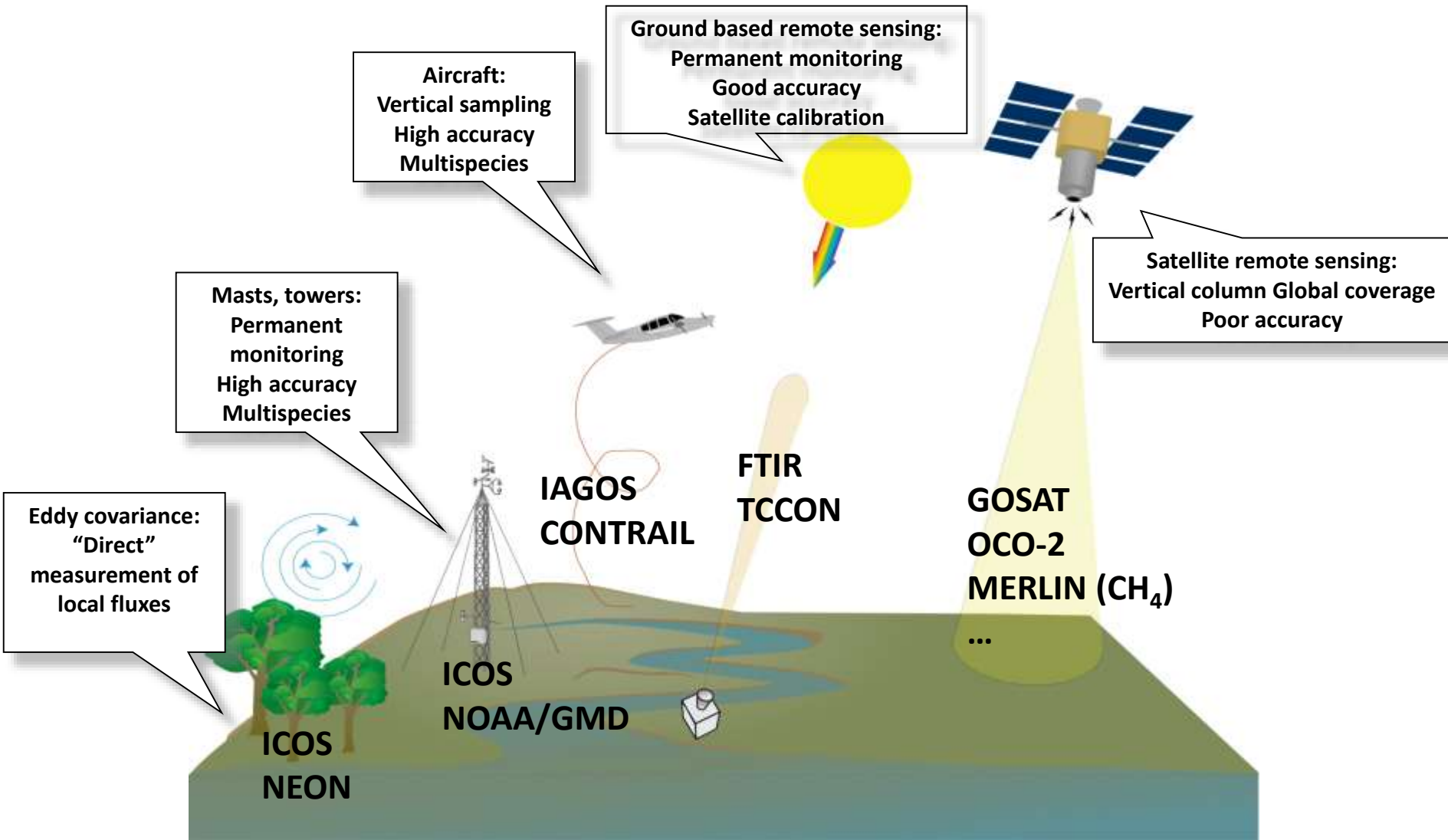


Seep intensity class





# Atmospheric observations







Thank you for your attention

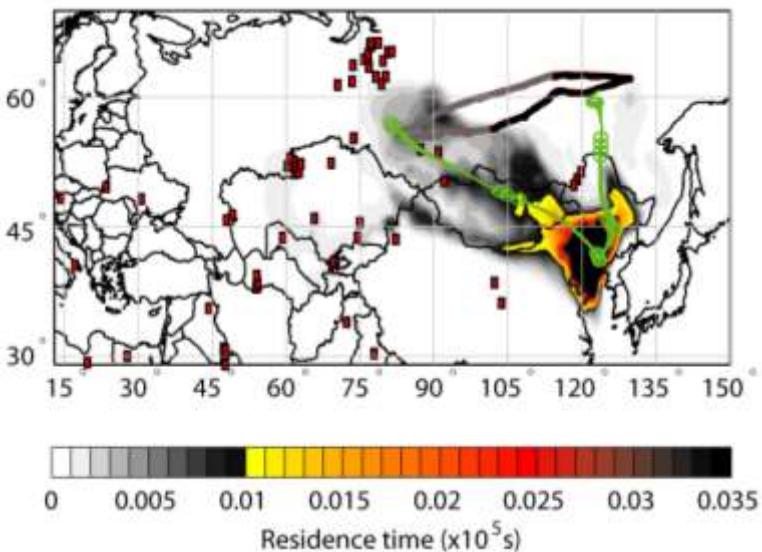
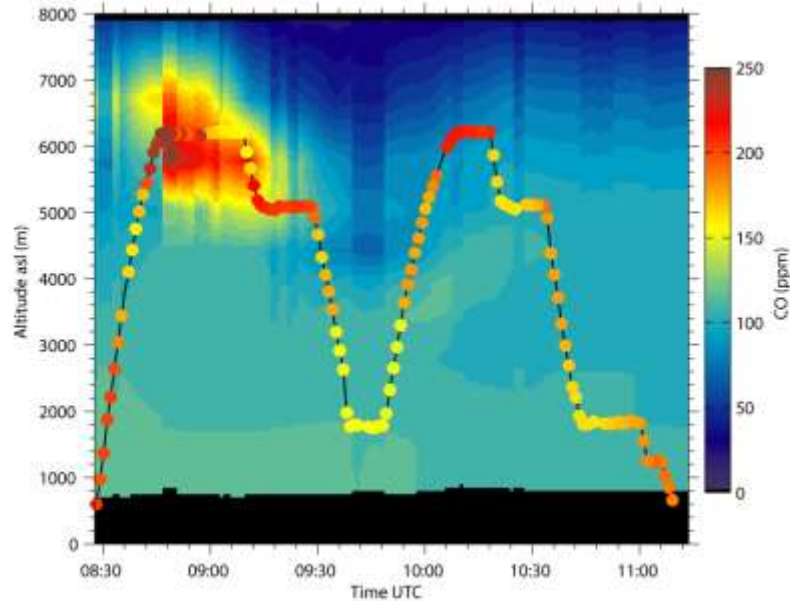


Thanks to

- CNRS-INSU, MESR, ANR, RFBR, SB-RAS, CEA, Generali, for funding this research
- Jean-Luc Teffo and others at the CNRS international affairs and CNRS Moscow bureau for making this project possible at all



## Long range transport of pollutant in the free troposphere from China to the Arctic through Siberia



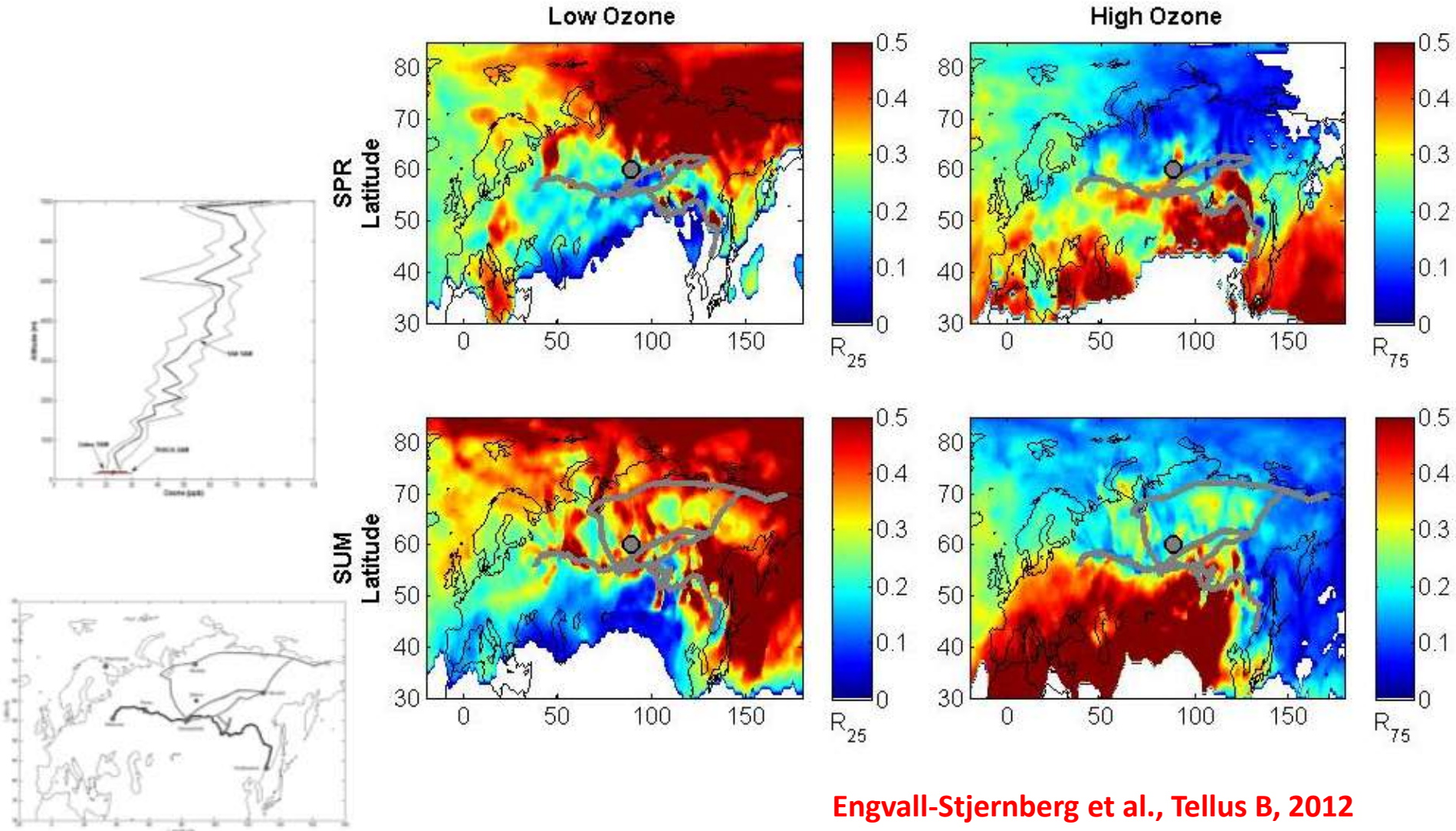
- The Siberian air shed is thought to be **clean air** affected only by minor regional emissions (but also Norilsk)
- Here we discovered large **enhancement of pollutants** (CO, aerosols) and GHG (CO<sub>2</sub>) over Siberia that could not be traced to regional pollution
- A suite of atmospheric models pointed to **emissions from NE China**, further confirmed by CO/CO<sub>2</sub> ratio analysis, a tracer of (fossil fuel) combustion efficiency that differs between China, Russia and Europe

J.-D. Paris et al., *Tellus B*, 60 (4), 551-568, 2008.

J.-D. Paris et al., *Bull. Amer. Meteorol. Soc.*, 2010, 625-641

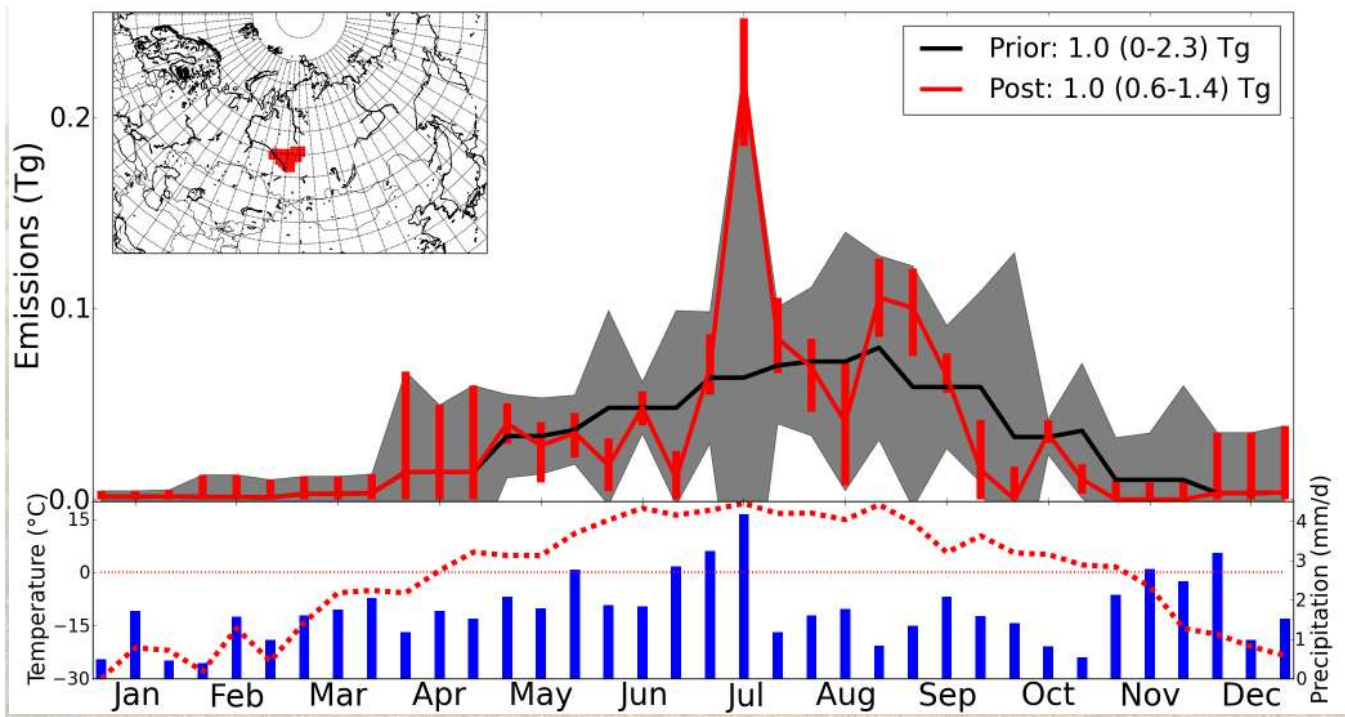


# Low surface O<sub>3</sub> in Siberia: Large scale deposition or Arctic chemistry?



Engvall-Stjernberg et al., Tellus B, 2012







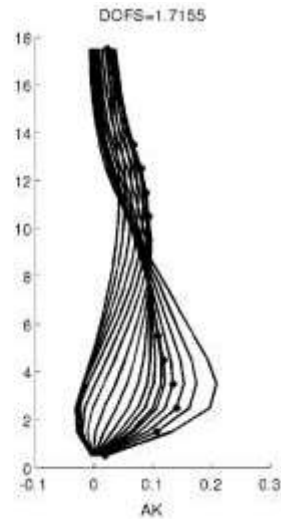
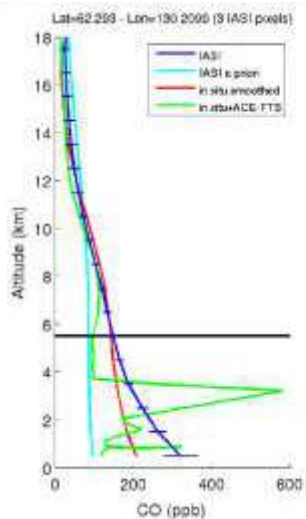
Stanislav Lvovsky / Flickr

# Orders of magnitude, TgCH<sub>4</sub>/yr

- Anthropogenic sources (global) 273-409
- Wetlands (global) 140-280
- Hydrates (global) 1-10
- Permafrost 0-1
  - (Kirschke et al 2013)
- Anthropogenic Russia: 26
  - (Dolman et al. 2012)
- East Siberian Arctic Shelf: storm+bubble 17
  - (Shakhova et al., 2013)
- West Siberian wetlands : 1-6
  - (Kim et al., 2011)
- Thermokarst lakes: 3.8
- Northern wetlands: 6-60
  - (Walter et al., 2006)

## IASI CO vs. aircraft data: a combined view on smoke transport to the Arctic

- In IPY/POLARCAT biomass burning plumes transport has been observed from Siberia and Kazakhstan across the North Pole to North America.
- Biomass burning plumes can be used as a contrasted signal to validate spaceborne IASI measurements of pollutants (CO).
- Retrieval are well correlated to in situ profiles, but rather over land in summer and sea-ice in spring.



M. Pommier et al.,  
2010, *Atmos Chem Phys*,

J.D. Paris et al., 2009,  
*Atmos Chem Phys*

