



HAL
open science

Positive selection in bone morphogenetic protein 15 targets a natural mutation associated with primary ovarian insufficiency in human

Sylvain Auclair, Raffaella Rossetti, Camille Meslin, Olivier Monestier, Elisa Di Pasquale, Géraldine Pascal, Luca Persani, Stéphane Fabre

► To cite this version:

Sylvain Auclair, Raffaella Rossetti, Camille Meslin, Olivier Monestier, Elisa Di Pasquale, et al.. Positive selection in bone morphogenetic protein 15 targets a natural mutation associated with primary ovarian insufficiency in human. PLoS ONE, 2013, 8, online (10), Non paginé. 10.1371/journal.pone.0078199 . hal-01129774

HAL Id: hal-01129774

<https://hal.science/hal-01129774>

Submitted on 29 May 2020

HAL is a multi-disciplinary open access archive for the deposit and dissemination of scientific research documents, whether they are published or not. The documents may come from teaching and research institutions in France or abroad, or from public or private research centers.

L'archive ouverte pluridisciplinaire **HAL**, est destinée au dépôt et à la diffusion de documents scientifiques de niveau recherche, publiés ou non, émanant des établissements d'enseignement et de recherche français ou étrangers, des laboratoires publics ou privés.

Positive Selection in Bone Morphogenetic Protein 15 Targets a Natural Mutation Associated with Primary Ovarian Insufficiency in Human

Sylvain Auclair^{1,2,3,4}, Raffaella Rossetti⁵, Camille Meslin^{1,2,3,4}, Olivier Monestier⁶, Elisa Di Pasquale⁷, Géraldine Pascal^{1,2,3,4}, Luca Persani^{5,8}, Stéphane Fabre^{1,2,3,4,6*}

1 INRA, UMR85 Physiologie de la Reproduction et des Comportements, Nouzilly, France, **2** CNRS, UMR7247 Physiologie de la Reproduction et des Comportements, Nouzilly, France, **3** Université François Rabelais de Tours, Tours, France, **4** IFCE, Nouzilly, France, **5** Department of Clinical Sciences and Community Health, University of Milan, Milan, Italy, **6** INRA-ENVT, UMR 444, Laboratoire de Génétique Cellulaire, Castanet-Tolosan, France, **7** Institute of Genetic and Biomedical Research - UOS of Milan, National Research Council of Italy, Istituto Clinico Humanitas, Milan, Italy, **8** Laboratorio di Ricerche Endocrino-Metaboliche, Istituto Auxologico Italiano, Milan, Italy

Abstract

Bone Morphogenetic Protein 15 (BMP15) is a TGF β -like oocyte-derived growth factor involved in ovarian folliculogenesis as a critical regulator of many granulosa cell processes. Alterations of the *BMP15* gene have been found associated with different ovarian phenotypic effects depending on the species, from sterility to increased prolificacy in sheep, slight subfertility in mouse or associated with primary ovarian insufficiency (POI) in women. To investigate the evolving role of BMP15, a phylogenetic analysis of this particular TGF β family member was performed. A maximum likelihood phylogenetic tree of several TGF β /BMP family members expressed by the ovary showed that BMP15 has a very strong divergence and a rapid evolution compared to others. Moreover, among 24 mammalian species, we detected signals of positive selection in the *hominidae* clade corresponding to F146, L189 and Y235 residues in human BMP15. The biological importance of these residues was tested functionally after site directed-mutagenesis in a COV434 cells luciferase assay. By replacing the positively selected amino acid either by alanine or the most represented residue in other studied species, only L189A, Y235A and Y235C mutants showed a significant increase of BMP15 signaling when compared to wild type. Additionally, the Y235C mutant was more potent than wild type in inhibiting progesterone secretion of ovine granulosa cells in primary culture. Interestingly, the Y235C mutation was previously identified in association with POI in women. In conclusion, this study evidences that the *BMP15* gene has evolved faster than other members of the TGF β family and was submitted to a positive selection pressure in the *hominidae* clade. Some residues under positive selection are of great importance for the normal function of the protein and thus for female fertility. Y235 represents a critical residue in the determination of BMP15 biological activity, thus indirectly confirming its role in the onset of POI in women.

Citation: Auclair S, Rossetti R, Meslin C, Monestier O, Di Pasquale E, et al. (2013) Positive Selection in Bone Morphogenetic Protein 15 Targets a Natural Mutation Associated with Primary Ovarian Insufficiency in Human. PLoS ONE 8(10): e78199. doi:10.1371/journal.pone.0078199

Editor: Reiner Albert Veitia, Institut Jacques Monod, France

Received: June 13, 2013; **Accepted:** September 9, 2013; **Published:** October 16, 2013

Copyright: © 2013 Auclair et al. This is an open-access article distributed under the terms of the Creative Commons Attribution License, which permits unrestricted use, distribution, and reproduction in any medium, provided the original author and source are credited.

Funding: This work was sponsored by grants from the French "Agence Nationale de la Recherche" (ANR 2010 BLAN 1608 01, MONOPOLY), the French "Centre National de la Recherche Scientifique" (CNRS PICS program), and was also partially supported by the Italian Telethon (grant GGP09126). The computations were hosted by the Toulouse Midi-Pyrénées bioinformatics platform. The funders had no role in study design, data collection and analysis, decision to publish, or preparation of the manuscript.

Competing interests: The authors have declared that no competing interests exist.

* E-mail: stephane.fabre@tours.inra.fr

☉ These authors contributed equally to this work.

Introduction

BMP15 is an oocyte-derived growth factor belonging to the transforming growth factor-beta (TGF β) superfamily, which is involved in ovarian follicular development as a critical regulator of many granulosa cell (GC) processes such as proliferation and steroidogenesis [1–4]. Similarly to other TGF β /BMP factors, BMP15 is first synthesized as a pro-form processed by

cleavage to liberate a mature form with biological activity and a large pro-domain [5,6]. After the removal of the signal peptide, the pro-protein dimerizes first and then undergoes proteolytic cleavage at a conserved RXXR cleavage site [2,3,7,8]. The pro-region is known to have an important role in the processing of the pro-protein by driving the dimerization and the subsequent secretion of the active mature dimers. BMP15 action in the ovary was first discovered in sheep with the

evidence of six different natural “loss-of-function” mutations, two in the pro-region and four in the mature domain [4]. Heterozygous carrier ewes have increased ovulation rate, but homozygous carrier ewes show a blockade at the primary stage of folliculogenesis leading to sterility [9-12]. Unlike mutated BMP15 homozygous ewes, *bmp15* null female mice are fertile but exhibit a slight decrease in ovulation rate with minimal ovarian histopathological defects [13]. Interestingly heterozygous *bmp15* invalidated mice never exhibit increased ovulation rate as observed in sheep. Thus, the role of BMP15 appears to differ between species. This protein, associated with increased ovulation rate when altered in mono-ovulating sheep, seems to be dispensable in mouse, a poly-ovulating species. Recent findings are in agreement with this concept. Firstly, mouse seems to lack a biologically active Bmp15 molecule [14] and secondly, over-expression of a biologically active BMP15 in mice leads to accelerate folliculogenesis and causes an early decline in the ovarian reserve. Therefore, the lack of biologically active BMP15 during folliculogenesis in the wild type mice may be relevant to their polyovulatory nature [15]. Then, the *BMP15* gene has become a strong candidate gene for genetic alterations associated with human ovarian pathologies. In women, mutations in BMP15 have been found associated with both primary and secondary amenorrhea in several primary ovarian insufficiency (POI) cohorts with prevalence between 1.5% and 15% [16]. POI, a more appropriate definition of premature ovarian failure, is a disorder associated with female infertility affecting 1 to 2% of women under 40 years old, thus representing one major cause of female infertility [17]. Up to now, more than a dozen of mutations in BMP15 have been described associated with POI [16]. Most of the POI-associated BMP15 mutations are missense mutations found at the heterozygous state and located in the pro-region part of the protein. When tested functionally, these mutations hampered the protein processing and the biological activity, consistent with a mechanism of haploinsufficiency [18].

Regarding all the above data, the *BMP15* gene is the target of numerous mutations associated with altered ovarian function in different species, which highlights its crucial role in female fertility but with species-specific differences. To our knowledge, experimental and functional results of positive selection of gene involved in vertebrate reproductive functions are missing. The central hypothesis being examined in this paper is to determine if BMP15 has evolved under positive selection, and if this evolution had consequences on the control of ovarian function in mammals.

Results and Discussion

BMP15 evolution among TGF β family members

We performed a phylogenetic analysis of several TGF β /BMP family members expressed within the ovary throughout selected species: human, mouse and rat (Figure 1 and Table S1). The maximum likelihood (ML) tree we obtained is consistent with previous TGF β phylogenies made with the entire pre-pro-proteins sequences [19,20]. BMP15, as well as GDF9, INHA and AMH (all marker genes of the ovarian

function), evolve more rapidly and are more divergent between species than the other members of the TGF β superfamily as indicated by their high length branches. Specifically, BMP15 evidenced a very strong divergence and a rapid evolution compared to other BMP genes expressed in the ovary like other genes encoding proteins involved in reproductive functions as previously shown [21,22].

BMP15 positive selection events

Given that positive selection is often associated with branch length and fast gene evolution [23], and that genes involved in reproduction evolve faster and often evidenced positive selection [24-26], we carried out positive selection analyses on BMP15. We used the BMP15 sequences from 24 mammals (Figure 2 and Table S2) analyzed by branch-site models from PAML packages [27] within the PhyleasProg web server [28], in order to determine whether the different species of the phylogenetic tree underwent selective pressures and to detect signals of local episodic positive selection. Those analyses were applied to the full sequence, the pro-region and the mature form of BMP15. Results for the mature form did not show any sites under positive selection; this result is not surprising since this domain is highly conserved among species. We tested all branches of the phylogenetic tree of BMP15 pro-region and three branches appeared to be significant: opossum, orangutan and *hominidae* (Figure 2 and Table S3). We identified five positively selected sites for opossum (W55, S73, D89, G165 and P187); two of these five amino acids (S73 and P187) were also identified by the calculation of positive selection using the full sequence of BMP15. We identified three positively selected sites for the orangutan (I25, R146 and R215) and three for the *hominidae* clade, corresponding in human sequence to F146, L189 and Y235 (Figure 3A). It has been reported that GC biased gene conversion (gBGC) [29] could increase the *dN/d_s* ratio, especially in primates and cause false positive detection of amino acid in branch-site positive selection study [30,31]. We know that in *hominidae* the *BMP15* third-codon position GC rate (53%) is high compared to the gene average in this clade (46%) [32]. However, a recent study by Gharid and Robinson-Rechavi [33] shows that the GC content of a sequence did not significantly affect the branch site model.

Biological activity of the BMP15 positively selected sites

In order to check the functional role of these three amino acids in the human BMP15 protein, we performed a luciferase reporter assay in the granulosa-derived COV434 cell line, as previously described [18]. We analyzed biological activities of the human wild type BMP15 compared to those of mutant variants that have been obtained by site-directed mutagenesis for the three positions under positive selection. One set of mutants was obtained by the systematic substitution of the human wild type amino acid under positive selection by an Alanine (F146A, L189A and Y235A). The second set of mutants was obtained by replacing the human wild type amino acid by the one that is the most represented at the same position in the other species within the BMP15 multiple

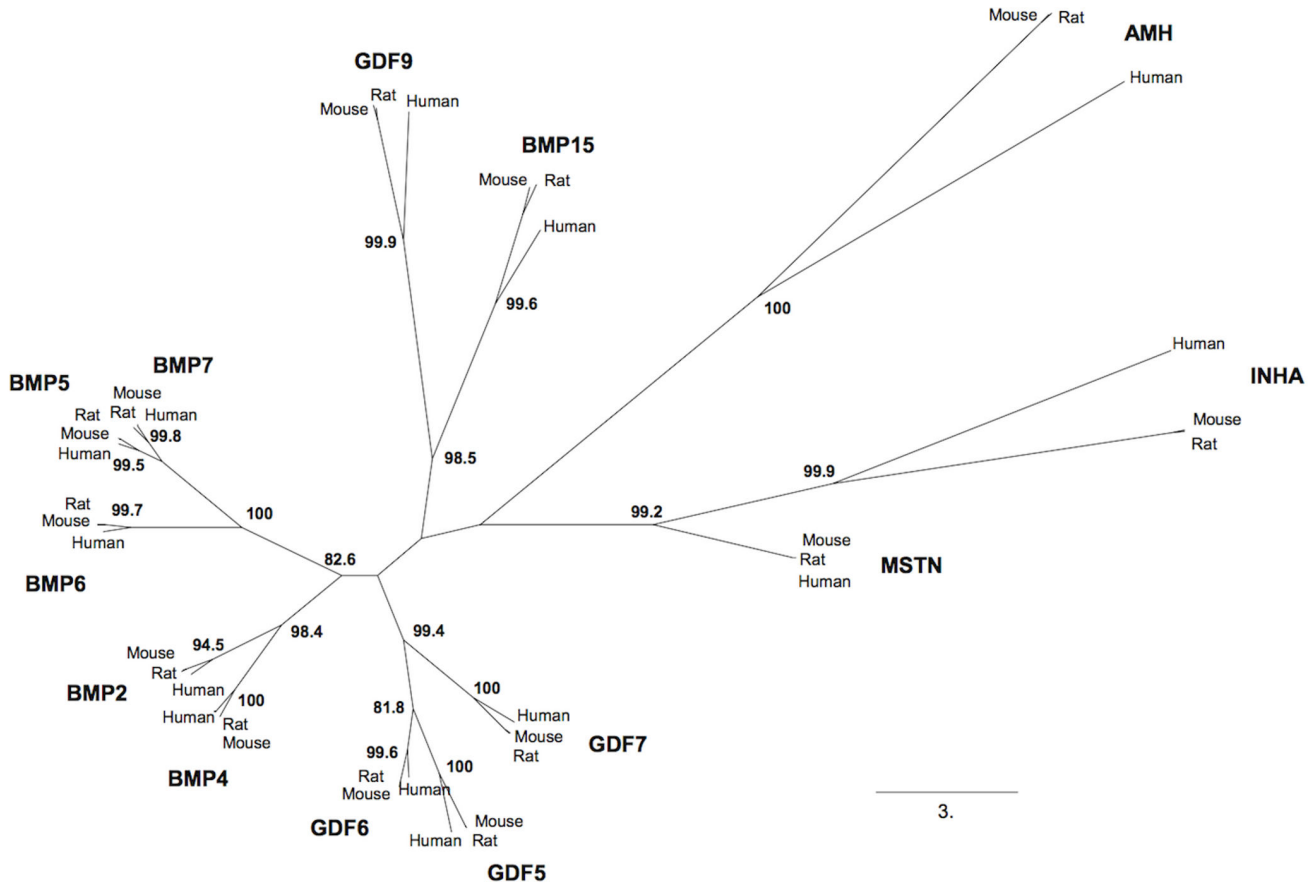


Figure 1. BMP15 evolution among TGFβ/BMP family members. Phylogenetic tree of thirteen members of the TGFβ/BMP superfamily expressed by the mammalian ovary reconstructed using maximum likelihood. Bootstrap values are given when nodes are strongly supported (>80%). The scale represents the substitution rate.

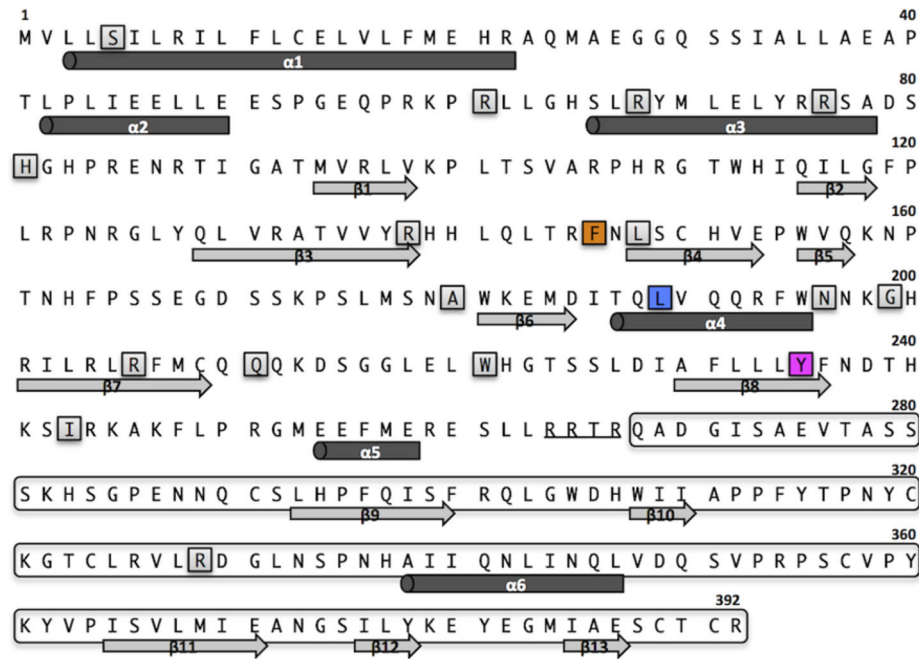
doi: 10.1371/journal.pone.0078199.g001

alignment used for phylogenetic analysis (F146S, L189H and Y235C, Figure S1). As positive controls, COV434 cells expressing the luciferase reporter gene showed an activation of the BMP signaling pathway when stimulated with 100 ng of the exogenous recombinant human BMP15, or when transiently transfected with the wild type human BMP15 expressing construct (Figure 3B). Among our positively selected variants, BMP15 activity was not affected by the F146 residue mutations. In contrast, the transfection of Y235A and Y235C mutants showed a significant enhancement of the BMP signaling pathway of 24 to 42% compared to the wild type. Moreover, L189A also increased the BMP15 activity by 34% (Figure 3B). Accordingly, the human BMP15 secondary structure prediction by PsiPred [34] revealed that the F146 site is situated in a coil region, while L189 and Y235 are situated in the fourth alpha helix and in the eighth beta sheet, respectively (Figure 3A). This was confirmed by the crystallographic structure of TGFβ1[35] and, thus these positions are suspected to affect the three-dimensional structure of BMP15. Additionally, purified recombinant human BMP15 proteins were assayed on their ability to modulate the progesterone synthesis

by granulosa cells. When compared to wild type, recombinant human BMP15^{Y235C} was dose-dependently more potent in inhibiting progesterone secretion by ovine granulosa cells in primary culture (Figure 4). Indeed, the significant biological action of BMP15^{Y235C} started at 10ng/ml compared to 50ng/ml for the wild type protein. Moreover, at 200ng/ml the inhibiting action of BMP15^{Y235C} was significantly higher than wild type. These results were in agreement with the increased signaling activity of the BMP15^{Y235C} mutant in the COV434 cell assay.

Overall, these findings are consistent with the idea that some residues under positive selection are of key importance in the function of the protein. Particularly, Y235 represents a critical residue in the determination of BMP15 biological activity and BMP15^{Y235C} was the first mutation found associated with POI in human [36]. Interestingly, the present functional analysis of this position indicates that its alteration enhanced the BMP15-dependent transcriptional activity associated with enhanced action on granulosa cell steroidogenesis. In contrast, BMP15^{Y235C} was unable to increase granulosa cells proliferation as previously shown [36]. This could indicate a discriminant action of this mutation on BMP15-dependent signaling on

A



B

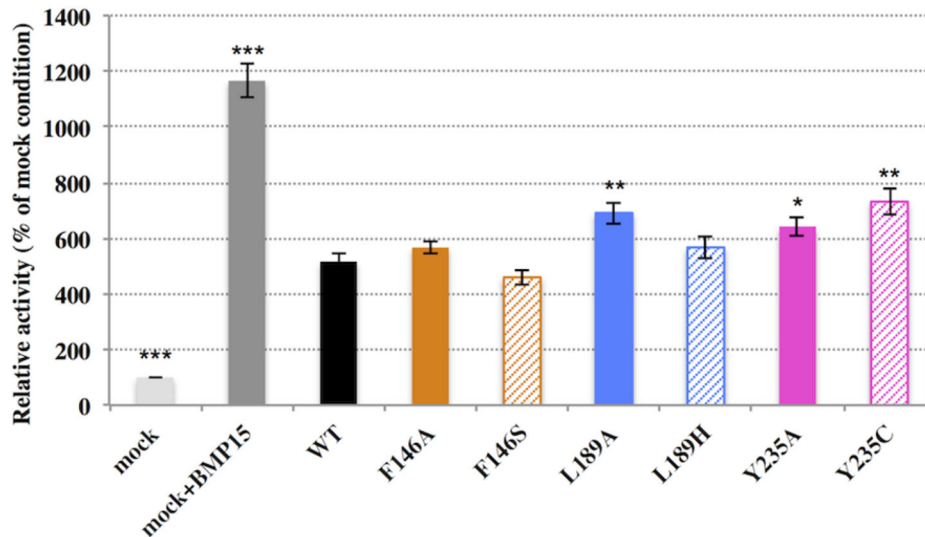


Figure 3. Functional analysis of amino acids under positive selection in human BMP15. A, Human BMP15 full sequence showing prodomain, cleavage site (underlined) and mature peptide (framed sequence); known human variants for BMP15 found in POI patients (framed grey highlighted); and identified amino acids under positive selection (framed colored highlighted): BMP15^{F146}, BMP15^{L189}, BMP15^{Y235}. B, *In vitro* reporter luciferase assay from COV434 granulosa cells transiently transfected with empty vector +/- 100ng recombinant human BMP15 (mock +/- BMP15) or wild type human BMP15 expressing vector (WT) or the different BMP15 variants vectors obtained by directed-mutagenesis of residues under positive selection. Results are expressed as the mean (\pm SD) of 4 independent experiments. Differences between means were analyzed by one-way ANOVA by comparing each condition to WT (*, $p < 0.05$; **, $p < 0.01$; ***, $p < 0.001$).

doi: 10.1371/journal.pone.0078199.g003

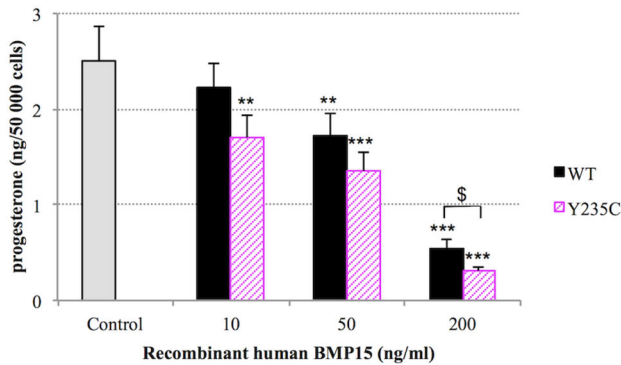


Figure 4. Recombinant BMP15 inhibition of progesterone secretion. Granulosa cells from small antral (1–3 mm in diameter) ovine follicles were cultured for 96 h in serum-free conditions. Cultures were performed in the absence (control) or in the presence of increasing dose (10, 50, 200 ng/ml) of wild type recombinant human BMP15^{wt} or BMP15^{Y235C} mutant. Each treatment was tested in triplicate in each of 5 independent experiments. The results represent the amount of progesterone secreted by 50 000 cells between 48 h and 96 h of culture (mean \pm SEM). Dose effect was analyzed by one-way ANOVA by comparing each dose to control (**, $p < 0.01$; ***, $p < 0.001$). Mutation effect was analyzed by Student t-test within each dose (\$, $p < 0.05$).

doi: 10.1371/journal.pone.0078199.g004

are of great importance for the normal function of the protein and thus for female fertility. Y235 represents a critical residue in the determination of BMP15 biological activity, confirming its role in the genetic determinism of POI in women through a complex and still undefined derangement of BMP15 paracrine function.

Materials and Methods

Phylogenetic and evolutionary analyses

Thirty-nine protein sequences belonging to the TGF β superfamily were retrieved from Ensembl for human, mouse and rat (Table S1). Multiple sequence alignments were performed using the MUSCLE algorithm [40]. Phylogenetic tree was reconstructed using maximum likelihood (ML) in PhyML 3.0 under the LG model [41]. Bootstrap values [42] were estimated with 1000 replications. BMP15 coding and protein sequences were retrieved from Ensembl database Release 70 (<http://www.ensembl.org/index.html>) from 23 mammal species: armadillo (*Dasypus novemcinctus*), chimpanzee (*Pan troglodytes*), dog (*Canis familiaris*), dolphin (*Tursiops truncatus*), gorilla (*Gorilla gorilla*), hedgehog (*Erinaceus europaeus*), horse (*Equus caballus*), human (*Homo sapiens*), kangaroo rat (*Dipodomys ordii*), lesser hedgehog tenrec (*Echinops telfairi*), macaque (*Macaca mulatta*), microbat (*Myotis lucifugus*), mouse (*Mus musculus*), opossum (*Monodelphis domestica*), orangutan (*Pongo abelii*), panda (*Ailuropoda melanoleuca*), pig (*Sus scrofa*), platypus (*Ornithorhynchus anatinus*), rabbit (*Oryctolagus cuniculus*), rat

(*Rattus norvegicus*), sloth (*Choloepus hoffmanni*), tarsier (*Tarsius syrichta*), cow (*Bos taurus*). An additional sequence was retrieved from NCBI database (<http://www.ncbi.nlm.nih.gov/>) for one mammal: sheep (*Ovis aries*) (Table S2). Phylogenetic tree and evolutionary analyses were computed on BMP15 pro-regions (i.e. from the N-terminus to the consensus cleavage site -RXXR-), on mature domain (i.e. from the consensus cleavage site -RXXR- to the C-terminus) and on full coding sequence. Multiple sequence alignment (MSA), tree reconstruction as well as positive selection calculation are then computed using the PhyleasProg web server v3.0 with the “fine” and “orthologs only” options [28]. The PhyleasProg web server uses the codeml program from the PAML package [27] to evaluate the ratio ω (ratio of non-synonymous/synonymous substitution rates, dN/dS), which is a measure of selective pressure. Values of $\omega < 1$, $= 1$ and > 1 are indicators of purifying selection, neutral evolution and positive selection, respectively. We used branch-site models [43,44], which permit different branches (or sets of branches) to evolve under different selective constraints. All branches of the phylogenetic tree are tested as foreground branch. Two models are used, one called “alternative” in which the foreground branch may have some sites under positive selection, and one called “null” in which positive selection is not allowed for the foreground branch. For the “alternative” model, three classes were defined: ω_0 : $dN/dS < 1$, ω_1 : $dN/dS = 1$ and ω_2 : $dN/dS \geq 1$, while in the “null” model, ω_2 was fixed to 1. Calculations are performed on a 272 codons length in order to keep the most possible informative sites (Figure S1). Likelihood ratio tests were used to compare log likelihood values between the two models. In the context of multiple testing, we calculated q -value measures as an extension of the false discovery rate, using the q -value package of R [45]. The q -value attached to each individual branch described the expected proportion of false positives among all branches equal to or more extreme than the observed one. Therefore, the thresholding of the estimated q -values at alpha level $= 10\%$ produced a list of significant branches so that the expected proportion of false positives was alpha. Bayes Empirical Bayes (BEB) method [44] was used to estimate posterior probabilities of selection on each codon, probabilities > 0.90 were considered for further study.

Construction of BMP15 expression plasmids

BMP15 gene variants were introduced by site-directed mutagenesis into the pCSBMP15wt vector, containing a full-length human BMP15 wild type cDNA [18]. Mutagenesis reaction for each variant was performed using the QuickChange Site-Directed Mutagenesis kit (Stratagene) and specific couples of primers (Table S4). Two series of mutagenesis were performed, the first one by changing the amino acid under positive selection by an Alanine (chemically inert) and the second one by the most frequently observed amino acid in protein alignment of BMP15 among all studied species (Figure S1). All mutations were checked by DNA resequencing.

Transient transfections and luciferase reporter assay

A COV434 human granulosa cells line [46] stably expressing the BMP responsive element (BRE) - luciferase reporter was seeded at a density of 500000 cells/well in 12-well plates in DMEM supplemented with 10% FCS. When subconfluent, cells were transfected in triplicate with the wild type or mutant pCS2 expression vector (500 ng/well) by using Fugene HD (Roche Applied Sciences, Indianapolis, IN) following manufacturer's protocol. The pCS2 empty vector was used as negative control. Approximately 24 hr after transfection, the medium was replaced with 1% serum medium with 100 ng/ml of rhBMP-15 (R&D Systems, Minneapolis, MN) added only in positive control wells. After 16 hr of treatment, cells were rinsed with ice-cold PBS and then lysed with 200 μ l of Passive Lysis Buffer 1X (Promega). Cell lysates from each well were centrifuged at 12,000 rpm for 2 minutes to pellet the cell debris and 20 μ l of the supernatants were then assayed for luciferase activity using the Dual Luciferase reporter Assay kit (Promega). Luminescence in relative light units (RLU) was measured for 10 s in a Fluoroskan Ascent instrument (Labsystems, Oy, Finland). Results and statistical analysis (one-way ANOVA followed by Dunnett's post-hoc test, GraphPad Prism v6.0) were then calculated as the mean (\pm SD) relative to pCS2-BMP15 wild type expression vector in triplicate in 4 separate experiments. Differences with $P > 0.05$ were considered as not significant.

Ovine granulosa cells culture and progesterone assay

Five cyclic Romanov ewes were treated with intravaginal progestagen sponges (fluorogestone acetate, 40 mg, Intervet, Angers, France) for 13 days in order to synchronize estrus. The ovaries were recovered at slaughtering in the late follicular phase, 36 h after sponge removal. This procedure was approved by the "Direction Départementale des Services Vétérinaires d'Indre-et-Loire" (approval number C37-175-2) for the agricultural and scientific research agencies INRA (French National Institute for Agricultural Research) and CNRS (French National Center for Scientific Research), and conducted in accordance with the Guide for the Care and Use of Agricultural Animals in Research and Teaching. Primary granulosa cells were recovered from ovarian follicles of 1-3mm in diameter and seeded at 100 000 viable cells/well in 96-well plates and cultured for 96 h at 37 °C with 5% CO₂ in serum- free McCoy 5a medium (Sigma, L'Isle d'Abeau Chesnes, France) as previously described [47]. Cultures were performed with or without 10, 50 and 200ng/ml of recombinant human BMP15 or BMP15^{Y235C} prepared previously [36]. Culture media were partially replaced (180 over 250 μ l) at 48 h. Media conditioned between 48 and 96h of culture were collected at 96h and stored at -20 °C prior to the progesterone assay. At the end of the culture period, the number of cells per well was estimated after trypsinization with a hemacytometer under a phase

contrast microscope. Progesterone amounts in the culture media from each experiment were measured by radioimmunoassay in the same assay, as described [48]. The limit of detection of the assay was 12 pg/tube and the intra-assay coefficient of variation was 10%. The results are expressed as the amount of progesterone secreted per 50 000 cells recovered at the end of the culture period. Results were calculated as the mean (\pm SEM) of triplicate in 5 separate cultures. Statistical analysis (GraphPad Prism v6.0) for BMP15 dose-effect was performed by one-way ANOVA. Statistical significance was given relatively to the control condition after Dunnett's multiple comparison tests. Mutation effect was tested by Student t-test within each BMP15 dose. Differences with $P > 0.05$ were considered as not significant.

Supporting Information

Figure S1. Multiple alignment of BMP15 pro-regions in 24 mammals using the MUSCLE algorithm.

(PDF)

Table S1. Ensembl protein identification numbers of the 39 members of the TGFbeta family used to draw the phylogenetic tree.

(PDF)

Table S2. Ensembl identification numbers (gene, transcript and protein) of the 24 mammalian orthologs of BMP15 used in the branch-site model for positive selection determination.

(PDF)

Table S3. Branch-site model parameters for positive selection determination.

(PDF)

Table S4. Sense and antisense primers used for human BMP15 mutagenesis.

(PDF)

Acknowledgements

The authors acknowledge the staff of the UEPAO experimental farm unit for taking care of the animals.

Author Contributions

Conceived and designed the experiments: GP SF. Performed the experiments: SA RR EDP SF. Analyzed the data: SA CM OM GP SF. Contributed reagents/materials/analysis tools: SA RR EDP GP. Wrote the manuscript: SA RR OM LP SF. Participated equally to the work: SA RR.

References

- McNatty KP, Moore LG, Hudson NL, Quirke LD, Lawrence SB et al. (2004) The oocyte and its role in regulating ovulation rate: a new paradigm in reproductive biology. *Reproduction* 128: 379-386. doi: 10.1530/rep.1.00280. PubMed: 15454632.
- Shimasaki S, Moore RK, Otsuka F, Erickson GF (2004) The bone morphogenetic protein system in mammalian reproduction. *Endocr Rev* 25: 72-101. doi:10.1210/er.2003-0007. PubMed: 14769828.
- Juengel JL, McNatty KP (2005) The role of proteins of the transforming growth factor-beta superfamily in the intraovarian regulation of follicular development. *Hum Reprod Update* 11: 143-160. PubMed: 15705960.
- Fabre S, Pierre A, Mulsant P, Bodin L, Di Pasquale E et al. (2006) Regulation of ovulation rate in mammals: contribution of sheep genetic models. *Reprod Biol Endocrinol* 4: 20. doi:10.1186/1477-7827-4-20. PubMed: 16611365.
- Massagué J (1990) The transforming growth factor-beta family. *Annu Rev Cell Biol* 6: 597-641. doi:10.1146/annurev.cb.06.110190.003121. PubMed: 2177343.
- Chang H, Brown CW, Matzuk MM (2002) Genetic analysis of the mammalian transforming growth factor-beta superfamily. *Endocr Rev* 23: 787-823. doi:10.1210/er.2002-0003. PubMed: 12466190.
- Shi Y, Massagué J (2003) Mechanisms of TGF-beta signaling from cell membrane to the nucleus. *Cell* 113: 685-700. doi:10.1016/S0092-8674(03)00432-X. PubMed: 12809600.
- Moore RK, Shimasaki S (2005) Molecular biology and physiological role of the oocyte factor, BMP-15. *Mol Cell Endocrinol* 234: 67-73. doi: 10.1016/j.mce.2004.10.012. PubMed: 15836954.
- Galloway SM, McNatty KP, Cambridge LM, Laitinen MP, Juengel JL et al. (2000) Mutations in an oocyte-derived growth factor gene (BMP15) cause increased ovulation rate and infertility in a dosage-sensitive manner. *Nat Genet* 25: 279-283. doi:10.1038/77033. PubMed: 10888873.
- Hanrahan JP, Gregan SM, Mulsant P, Mullen M, Davis GH et al. (2004) Mutations in the genes for oocyte-derived growth factors GDF9 and BMP15 are associated with both increased ovulation rate and sterility in Cambridge and Belclare sheep (*Ovis aries*). *Biol Reprod* 70: 900-909. PubMed: 14627550.
- Bodin L, Di Pasquale E, Fabre S, Bontoux M, Monget P et al. (2007) A novel mutation in the bone morphogenetic protein 15 gene causing defective protein secretion is associated with both increased ovulation rate and sterility in Lacaune sheep. *Endocrinology* 148: 393-400. PubMed: 17038554.
- Martinez-Royo A, Jurado JJ, Smulders JP, Martí JI, Alabart JL et al. (2008) A deletion in the bone morphogenetic protein 15 gene causes sterility and increased prolificacy in Rasa Aragonesa sheep. *Anim Genet* 39: 294-297. doi:10.1111/j.1365-2052.2008.01707.x. PubMed: 18355397.
- Yan C, Wang P, DeMayo J, DeMayo FJ, Elvin JA et al. (2001) Synergistic roles of bone morphogenetic protein 15 and growth differentiation factor 9 in ovarian function. *Mol Endocrinol* 15: 854-866. doi:10.1210/me.15.6.854. PubMed: 11376106.
- Hashimoto O, Moore RK, Shimasaki S (2005) Posttranslational processing of mouse and human BMP-15: potential implication in the determination of ovulation quota. *Proc Natl Acad Sci U S A* 102: 5426-5431. doi:10.1073/pnas.0409533102. PubMed: 15809424.
- McMahon HE, Hashimoto O, Mellon PL, Shimasaki S (2008) Oocyte-specific over-expression of mouse BMP-15 leads to accelerated folliculogenesis and an early onset of acyclicity in transgenic mice. *Endocrinology*.
- Persani L, Rossetti R, Cacciatori C, Fabre S (2011) Genetic defects of ovarian TGF-beta-like factors and premature ovarian failure. *J Endocrinol Invest* 34: 244-251. PubMed: 21297384.
- Beck-Peccoz P, Persani L (2006) Premature ovarian failure. *Orphanet J Rare Dis* 1: 9. doi:10.1186/1750-1172-1-9. PubMed: 16722528.
- Rossetti R, Di Pasquale E, Marozzi A, Bione S, Toniolo D et al. (2009) BMP15 mutations associated with primary ovarian insufficiency cause a defective production of bioactive protein. *Hum Mutat* 30: 804-810. doi: 10.1002/humu.20961. PubMed: 19263482.
- Katoh Y, Katoh M (2006) Comparative integromics on BMP/GDF family. *Int J Mol Med* 17: 951-955. PubMed: 16596286.
- Derynck R, Miyazono K (2008) TGF- β and the TGF- β Family. In: R DerynckM Kohei. *The TGF- β Family*. New York: Cold Spring Harbor Laboratory Press. pp. 29-43.
- Demuth JP, De Bie T, Stajich JE, Cristianini N, Hahn MW (2006) The evolution of mammalian gene families. *PLOS ONE* 1: e85. doi:10.1371/journal.pone.0000085. PubMed: 17183716.
- Hahn MW, Han MV, Han SG (2007) Gene family evolution across 12 *Drosophila* genomes. *PLoS Genet* 3: e197. doi:10.1371/journal.pgen.0030197. PubMed: 17997610.
- Studer RA, Penel S, Duret L, Robinson-Rechavi M (2008) Pervasive positive selection on duplicated and nonduplicated vertebrate protein coding genes. *Genome Res* 18: 1393-1402. doi:10.1101/gr.076992.108. PubMed: 18562677.
- Kosiol C, Vinar T, da Fonseca RR, Hubisz MJ, Bustamante CD et al. (2008) Patterns of positive selection in six Mammalian genomes. *PLOS Genet* 4: e1000144. PubMed: 18670650.
- Dorus S, Wasbrough ER, Busby J, Wilkin EC, Karr TL (2010) Sperm proteomics reveals intensified selection on mouse sperm membrane and acrosome genes. *Mol Biol Evol* 27: 1235-1246. doi:10.1093/molbev/msq007. PubMed: 20080865.
- Meslin C, Mugnier S, Callebaut I, Laurin M, Pascal G et al. (2012) Evolution of genes involved in gamete interaction: evidence for positive selection, duplications and losses in vertebrates. *PLOS ONE* 7: e44548. doi:10.1371/journal.pone.0044548. PubMed: 22957080.
- Yang Z (2007) PAML 4: phylogenetic analysis by maximum likelihood. *Mol Biol Evol* 24: 1586-1591. doi:10.1093/molbev/msm088. PubMed: 17483113.
- Busset J, Cabau C, Meslin C, Pascal G (2011) PhyleasProg: a user-oriented web server for wide evolutionary analyses. *Nucleic Acids Res* 39: W479-W485. doi:10.1093/nar/gkr243. PubMed: 21531699.
- Galtier N, Piganeau G, Mouchiroud D, Duret L (2001) GC-content evolution in mammalian genomes: the biased gene conversion hypothesis. *Genetics* 159: 907-911. PubMed: 11693127.
- Ratnakumar A, Mousset S, Glémin S, Berglund J, Galtier N et al. (2010) Detecting positive selection within genomes: the problem of biased gene conversion. *Philos Trans R Soc Lond B Biol Sci* 365: 2571-2580. doi:10.1098/rstb.2010.0007. PubMed: 20643747.
- Duret L, Galtier N (2009) Biased gene conversion and the evolution of mammalian genomic landscapes. *Annu Rev Genomics Hum Genet* 10: 285-311. doi:10.1146/annurev-genom-082908-150001. PubMed: 19630562.
- Romiguier J, Ranwez V, Douzery EJ, Galtier N (2010) Contrasting GC-content dynamics across 33 mammalian genomes: relationship with life-history traits and chromosome sizes. *Genome Res* 20: 1001-1009. doi:10.1101/gr.104372.109. PubMed: 20530252.
- Gharib WH, Robinson-Rechavi M (2013) The branch-site test of positive selection is surprisingly robust but lacks power under synonymous substitution saturation and variation in GC. *Mol Biol Evol*, 30: 1675-86. PubMed: 23558341.
- Jones DT (1999) Protein secondary structure prediction based on position-specific scoring matrices. *J Mol Biol* 292: 195-202. doi: 10.1006/jmbi.1999.3091. PubMed: 10493868.
- Shi M, Zhu J, Wang R, Chen X, Mi L et al. (2011) Latent TGF- β structure and activation. *Nature* 474: 343-349. doi:10.1038/nature10152. PubMed: 21677751.
- Di Pasquale E, Beck-Peccoz P, Persani L (2004) Hypergonadotropic ovarian failure associated with an inherited mutation of human bone morphogenetic protein-15 (BMP15) gene. *Am J Hum Genet* 75: 106-111. doi:10.1086/422103. PubMed: 15136966.
- Al-Musawi SL, Walton KL, Heath D, Simpson CM, Harrison CA (2013) Species differences in the expression and activity of bone morphogenetic protein 15. *Endocrinology* 154: 888-899. doi: 10.1210/en.2012-2015. PubMed: 23284103.
- Ely JJ, Frels WI, Howell S, Izard MK, Keeling ME et al. (2006) Twinning and heteropaternality in chimpanzees (*Pan troglodytes*). *Am J Phys Anthropol* 130: 96-102. doi:10.1002/ajpa.20310. PubMed: 16353220.
- Sawyer SL, Wu LI, Emerman M, Malik HS (2005) Positive selection of primate TRIM5alpha identifies a critical species-specific retroviral restriction domain. *Proc Natl Acad Sci U S A* 102: 2832-2837. doi: 10.1073/pnas.0409853102. PubMed: 15689398.
- Edgar RC (2004) MUSCLE: a multiple sequence alignment method with reduced time and space complexity. *BMC Bioinformatics* 5: 113. doi:10.1186/1471-2105-5-113. PubMed: 15318951.
- Guindon S, Gascuel O (2003) A simple, fast, and accurate algorithm to estimate large phylogenies by maximum likelihood. *Syst Biol* 52: 696-704. doi:10.1080/10635150390235520. PubMed: 14530136.
- Felsenstein J (1985) Confidence Limits on Phylogenies: An Approach Using the Bootstrap. *Evolution* 39: 783-791. doi:10.2307/2408678.
- Dudoit S, Yang YH, Callow MJ, Speed TP (2002) Statistical methods for identifying differentially expressed genes in replicated cDNA microarray experiments. *Statist Sin* 12: 111-139.
- Zhang J, Nielsen R, Yang Z (2005) Evaluation of an improved branch-site likelihood method for detecting positive selection at the molecular

- level. *Mol Biol Evol* 22: 2472-2479. doi:10.1093/molbev/msi237. PubMed: 16107592.
45. Storey JD (2002) A direct approach to false discovery rates. *J R Stat Soc B Stat Methodol* 64: 479-498.
46. van den Berg-Bakker CA, Hagemeyer A, Franken-Postma EM, Smit VT, Kuppen PJ et al. (1993) Establishment and characterization of 7 ovarian carcinoma cell lines and one granulosa tumor cell line: growth features and cytogenetics. *Int J Cancer* 53: 613-620. doi:10.1002/ijc.2910530415. PubMed: 8436435.
47. Pierre A, Pisselet C, Dupont J, Mandon-Pépin B, Monniaux D et al. (2004) Molecular basis of bone morphogenetic protein-4 inhibitory action on progesterone secretion by ovine granulosa cells. *J Mol Endocrinol* 33: 805-817. doi:10.1677/jme.1.01545. PubMed: 15591037.
48. Saumande J, Tamboura D, Chupin D (1985) Changes in milk and plasma concentrations of progesterone in cows after treatment to induce superovulation and their relationships with number of ovulations and of embryos collected. *Theriogenology* 23: 719-731. doi:10.1016/0093-691X(85)90147-5. PubMed: 16726042.