



**HAL**  
open science

## A recurrence-based technique for detecting genuine extremes in instrumental temperature records

Davide Faranda, Sandro Vaienti

► **To cite this version:**

Davide Faranda, Sandro Vaienti. A recurrence-based technique for detecting genuine extremes in instrumental temperature records. *Geophysical Research Letters*, 2013, 40 (21), pp.5782-5786. 10.1002/2013GL057811 . hal-01126695

**HAL Id: hal-01126695**

**<https://hal.science/hal-01126695v1>**

Submitted on 6 Mar 2015

**HAL** is a multi-disciplinary open access archive for the deposit and dissemination of scientific research documents, whether they are published or not. The documents may come from teaching and research institutions in France or abroad, or from public or private research centers.

L'archive ouverte pluridisciplinaire **HAL**, est destinée au dépôt et à la diffusion de documents scientifiques de niveau recherche, publiés ou non, émanant des établissements d'enseignement et de recherche français ou étrangers, des laboratoires publics ou privés.

# A new recurrences based technique for detecting robust extrema in long temperature records

Davide Faranda

*Laboratoire SPHYNX, Service de Physique de l'Etat Condensé, DSM, CEA Saclay,  
CNRS URA 2464, 91191 Gif-sur-Yvette, France, Email: davide.faranda@cea.fr.*

Sandro Vaienti

*Aix Marseille Université, CNRS, CPT, UMR 7332, 13288 Marseille,  
France and Université de Toulon, CNRS, CPT, UMR 7332,  
83957 La Garde, France, Email: vaienti@cpt.univ-mrs.fr.*

In this paper, by using new techniques originally developed for the analysis of extreme values of dynamical systems, we analyze several long records of temperatures at different locations showing that they have the same recurrence time statistics of a chaotic dynamical system perturbed with dynamical noise and by instrument errors. The technique provides a criterion to discriminate whether the recurrence of a certain temperature belongs to the natural climate variability or can be considered as a real extreme event with respect to a specific time scale fixed as parameter. The method gives a self-consistent estimation of the convergence.

## I. INTRODUCTION

The definition of what is part of the natural variability of a system and of what is, instead, a proper extreme event is an evergreen topic among natural scientists for the effects these phenomena may have on social and economical human activities [1–4]. An extreme event is usually identified as an observation whose occurrence is unlikely with respect to a time scale of interest. It is therefore natural to link the concept of extreme events to the recurrence statistics of certain observations. Two families of techniques have been devised to tackle this problem:

-*Statistical based techniques* have been devised to estimate the tail distribution by exploiting known properties of the bulk statistics via the so called Extreme Value Theory (EVT) [7, 8]. Extremes are extracted in a precise time window and then fitted to the Generalized Extreme Value (GEV) distribution. When the asymptotic distribution is known, one can compute return times for any observations but this is usually precluded for time series. In this case the estimation of return levels for very long return periods is prone to large sampling errors and potentially large biases due to inexact knowledge of the shape of the tails [7].

-*Dynamical systems based techniques* rely on defining extremes via a Poincaré recurrences analysis as points of the phase spaces visited only sporadically. They requires some knowledge of the attractor underlying the observations which should be reconstructed via the Ruelle-Takens embedding [5]. Unfortunately, to extract all this information usually requires the use of large data-sets since the convergence often depends by the dimensionality of the phase space and there is not an a priori way to recognize whether it is achieved or not [6].

In this paper we present a formal way to define extreme events based on a combination of the classical theory of Poincaré recurrences with the statistical results of the

EVT. By applying a special observable (see below) to the time series considered as the output of a stochastically perturbed dynamical system, the asymptotic GEV parameters are known and the convergence does not depend on the dimensionality of the system but only on the time window fixed to extract the extreme events and on how fast a certain observation occurs. A strong theoretical support for applying this technique has been given in [9] by analyzing the convergence of the method on series obtained as output of dynamical system perturbed with instrument-like-error. We defer to [9] for all the theoretical considerations and the proofs of the results whereas here we present the method in an easily reproducible algorithmic way. We will focus on some long records of daily mean temperatures and the related temperature anomalies collected at different locations. Besides the intrinsic interest of defining rigorous properties for temperature recurrences, this choice is also justified by the abundance and the good quality of the available data-sets.

## II. RECURRENCES AS EXTREME EVENTS OF DYNAMICAL SYSTEMS

The important concept of recurrences around a point of interest for the dynamics originate in the work of Poincaré [10] and has been used through the last century to study the properties of dynamical systems. In the last year a growing attention has been reserved to the study of extreme events of observables originating from orbits of dynamical systems. In fact, even if the Extreme Value Theory (EVT) has been devised for the study of independent and identically distributed (i.i.d.) variables, convergence towards the classical EVLs has been observed for chaotic dynamical system under special observables whose extremes are the recurrences around a point of the trajectory. We briefly recall some basics facts

of the EVT, referring to the book by Leadbetter et al. [11] for further insights: Gnedenko [12] studied the convergence of maxima of i.i.d. variables  $x(0), x(1), \dots, x(s)$  sampled by applying the so-called block maxima procedure which consists in dividing the observations  $x(t)$  into  $n$  bins each containing  $m$  observations and considering  $M_j = \max\{x(0), x(1), \dots, x(m-1)\}$ ,  $j = 1, \dots, n$ . He proved that, in the limit of  $n, m \rightarrow \infty$  one gets as asymptotic distribution an EVL belonging to the Generalized Extreme Value (GEV) distribution family:

$$F_G(x; \mu, \sigma, \xi) = \exp \left\{ - \left[ 1 + \xi \left( \frac{x - \mu}{\sigma} \right) \right]^{-1/\xi} \right\}; \quad (1)$$

which holds for  $1 + \xi(x - \mu)/\sigma > 0$  being  $\mu \in \mathbb{R}$  the location parameter,  $\sigma > 0$  the scale parameter and  $\xi$  the tail index (also called shape parameter) discriminating the type of tails behavior: Gumbel EVLs for bulk statistics with exponential tails ( $\xi = 0$ ), Fréchet EVLs for fat unbounded tails ( $\xi > 0$ ) and Weibull EVLs for upperly bounded tails ( $\xi < 0$ ).

In the last decade many works focused on the possibility of treating time series of observables of deterministic dynamical system using the EVT. The first rigorous mathematical approach goes back to the pioneer paper by Collet [13]. Important contributions have successively been given in [14–20]. The goal of all these investigations was to find a suitable way to replace the independence conditions on the series  $x(t)$  with the dependency structure introduced by the laws governing the output of dynamical systems. This is indeed possible by exploiting the properties of the Poincarè recurrences for chaotic systems: it has been proved that if one considers a point of the phase space  $\zeta$  and take as observable a function  $y(t) = g(\text{dist}(\zeta, x(t)))$  i.e. the series of the distances between  $\zeta$  and the other points of the orbits conveniently weighted by a function  $g$ , once sampled maxima of the observable  $y(t)$ , one gets asymptotic convergence to one of the EVLs classical laws. In particular, if  $g(\cdot) = -\log(\cdot)$  is selected, the asymptotic EVL is always a Gumbel law with shape parameter  $\xi = 0$ . Note that maxima of  $g$  correspond to minima of the distance series thus, in each bin, we extract exactly the closest recurrence to the observation  $\zeta$ .

Here we adapt the method for finite time data-sets in a similar fashion of what has been done for the Lyapunov exponents by Wolf et al. [21]. We define the following algorithm for recognizing the points of the series around which there are few recurrences, provided that the series examined is chaotic:

1. Consider a given time series  $x(t)$   $t = 1, 2, \dots, s$ .
2. Fix the point  $\zeta$  to be a point of the series itself  $x(t)$ .
3. Compute the series  $y(t) = -\log(\text{dist}(\zeta, x(t)))$ .
4. Once divided the series  $y(t)$  in  $n$  bins each containing  $m$  data ( $mn = s$ ), extract the maxima  $M_j$ ,  $j = 1, \dots, n$  for the series  $y(t)$ .

5. Fit the maxima to the GEV model, perform a Kolmogorov-Smirnov test [22] to check whether the fit succeeded or failed.

At this point the results of the fit are compared to the output of a chaotic dynamical system perturbed by observational and dynamical noise.

- If the fit succeeds we can repeat the experiment for shorter bin lengths and find the smallest  $m$  such that, for the chosen  $\zeta$ , the fit converges. This defines the shortest convergent recurrence time.
- If the fit fails one should repeat the experiment by increasing the size of  $m$  until it is possible to retain a sufficient number of maxima to perform a reliable fit to the GEV model.

We can define the points such that the fit is non convergent as extreme of the series with respect to the bin length fixed by  $m$  by exploiting the results given in [9, 20]: if the point  $\zeta$  is visited with less frequency, being the EVL parameters dependent on the density of observations around the chosen  $\zeta$  via the intensity of the observational noise, one must go to higher values of  $m$  in order to have a reliable statistics. In [9] the case of dynamical system perturbed with instrument-induced-error is treated in a formal way, by showing that classical EVLs hold for the orbit  $\{T^i x\}_{i \geq 1}$  of a smooth and chaotic map  $T$  in some manifold of dimension  $d$  and preserving the invariant measure  $\nu$  perturbed with observational noise. Its effect is to change the orbit of the initial point  $x$  into  $T^i x + \varepsilon \psi_i$ , where the  $\psi_i$  are i.i.d. random variables which take values in the unit ball of  $\mathbb{R}^d$  and distributed according to the Lebesgue measure  $\theta$ , and  $\varepsilon$  is a small positive parameter. The process  $y(T^i x + \varepsilon \psi_i)$  is endowed with the probability stationary measure  $\nu \times \theta^{\mathbb{N}}$ . Under some conditions on the choice of the map and of the measure, we have been able to prove that the previous process converge to a GEV distribution (Gumbel), with the scaling parameters  $\mu$  and  $\sigma$  given respectively by  $\mu = \frac{1}{d} \log(K_d m \frac{\nu(B(\zeta, \varepsilon))}{\varepsilon^d})$  and  $\sigma = \frac{1}{d}$ , where  $B(\zeta, r)$  denotes the ball centered at the point  $\zeta$  and with radius  $r$  and  $K_d$  is the volume of the unit sphere in  $\mathbb{R}^d$ . Whenever the point  $\zeta$  is visited with less frequency, the local density is of lower order in  $\varepsilon$ , which means that one should go to higher values of  $m$  in order to have a reliable statistics. Here we exploit the dependence on  $m$  to track the points visited with less frequency but one can use the fact that instead classical EVL scaling constants do not depend on  $m$  for studying other interesting properties of dynamical systems such as the determination of fractal dimensions [9]. We have already mentioned that one could also compute the recurrences after reconstructing the attractor via the traditional embedding techniques [5] by using the nearest neighbor techniques. In this case one has to estimate the maximum embedding dimension and the time delay and after compute the recurrences. This is however infeasible due to the high dimensionality of the climate attractor as stated by Eckman and Ruelle [23] and Lorenz

[24]. Our method does not need any computation of the embedding dimensions which appears only as a scaling factor for the parameters  $\sigma$  and  $\mu$  but not on  $\xi$  which must be zero in any case. This motivates the choice of  $g(\cdot) = -\log(\cdot)$  as the only observable whose GEV shape parameter does not depend on the dimension [14].

### III. ANALYSIS OF LONG TEMPERATURE RECORDS

At each location we will consider two different time series: the series of daily mean temperatures  $T(t)$  and the series of daily mean temperature anomalies  $T_a(t)$ . The latter has been obtained by removing from the data two annual cycles, computed with all data available percentiles in a 5-day window, in other words the series of anomalies is constructed by subtracting the best estimate of the seasonal cycle from the daily temperature. The series have been all been extracted from the ECA&D v1.1 database [25]. An example of  $T(t)$  and  $T_a(t)$  with relative histograms is presented in Fig. 1. The only assumptions on the time series analyzed concern their chaoticity and their stationarity. The first assumption is justified:

- *a priori* by observing that the series consist of a strong chaotic component - driven by the meteorological phenomena - superimposed to a seasonal cycle.

- *a posteriori* by the successful application of our technique which would not work if the periodic component would dominate the chaotic one.

For the stationarity of the series we instead refer to the World Meteorological Organization guidelines [7]. We report the analysis of three station chosen for their peculiar climate characteristics: Armagh in Northern Ireland (UK), whose climate is influenced by the Atlantic Ocean with temperature ranges not extreme [26]; Milan (Italy) whose climatology is governed by a Mediterranean component and a more continental one due the proximity to the Alps and the Apennines mountains ranges [27] and Wien (Austria) whose climate has already marked continental features [28]. The series feature respectively 161, 246, 156 years of observations. In order to perform a reliable GEV fit, we have to take into account the role of the truncation error being the series of temperature truncated at  $p = 3$  digits. As discussed in [9], a blind application of the method without recovering a continuous temperature field, would lead to a divergent fit as the recurrence distribution will appear as a collection of Dirac's delta. We can solve the problem by adding a uniform noise for  $p \geq 4$  which does not alter the observations but allows for recovering continuity.

The shape parameter  $\xi$  has been obtained by fitting the GEV distribution via a maximum likelihood estimation technique [19]. The recurrences, computed for all the temperatures  $\zeta$  between the absolute recorded extremes, is presented in Fig 2 for the stations located Armagh (top panel), Milan (middle panel) and Wien (bot-

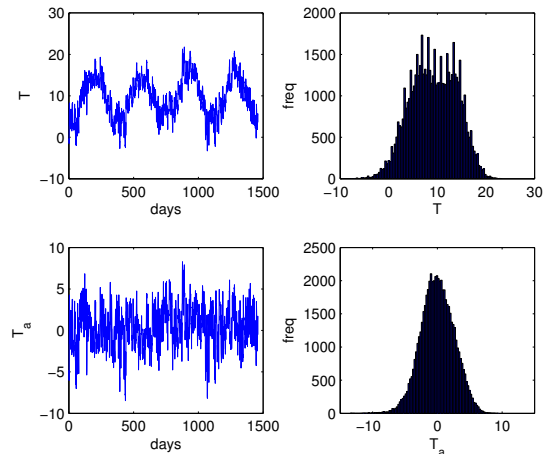


FIG. 1. Top: An example of temperature series and its histogram. Bottom: the same for a temperature anomalies series. All the plots refer to Armagh (UK) weather station.

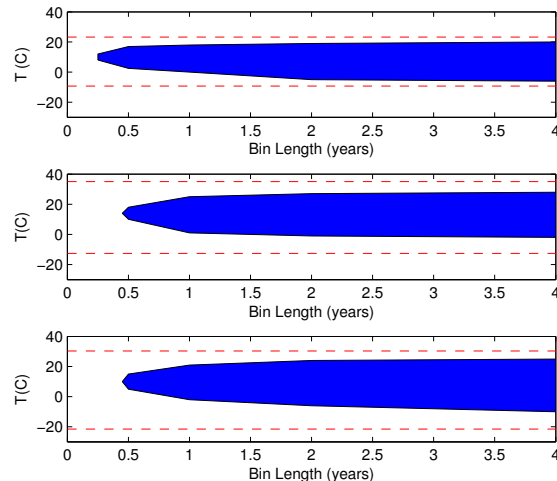


FIG. 2. Region of temperature with convergent Gumbel fit (blue area) for different bin length. Red dotted lines: absolute extremes of the temperature series for Armagh (top), Milan (middle) and Wien (bottom). Extremes are located in the white area of the plots between the two dotted lines.

tom panel). The experiments have been repeated for different bin lengths between 3 months and 4 years. In Fig 2, the blue area represents the reference temperatures  $\zeta$  whose GEV fit passes the Kolmogorov Smirnov test to the Gumbel law [22]. This temperatures range is what we propose as a rigorous definition of natural climate variability with respect to the time scale given by  $m$ . Real extreme events are instead located outside the white blue area and correspond to unsuccessful Gumbel fits. For bin length shorter than six months the fits fail at any reference temperatures as the bin length  $m$  is too short for observing proper recurrences near  $\zeta$ . The only

exception is registered at Armagh where, due to the limited seasonal temperature excursions, the convergence is achieved for  $8C < \zeta < 12C$  already for a 3 months bin length. In general one observe that, when the bin length is increased, the range of temperatures accepted as natural climate variability increases e.g. for Milan one could define 0 C as an extreme temperature with respect to a bin length of half a year but not when considering a bin length of 4 years. We repeated the same analysis reported in Fig 2 for the series of the anomalies  $T_a$ . The main advantage of using temperature anomalies consists in the possibility of comparing the climatology of different locations. Let us consider as bin length a one year period: at Armagh, in a temperate, marine climate, only anomalies up to  $\pm 6$  C are acceptable in the annual variability according to the method described. At Wien, the continental climate fosters large temperature excursions so that we find the anomalies up to  $\pm 10$  C acceptable in the annual variability. For Milan we get  $\pm 7$  C, an intermediate situation which recalls the characteristics of a climate influenced both by the Mediterranean sea and by its location in the Po valley. By plotting the length of the interval of convergent  $T_a$  at all the European locations for which at least 60 years of daily data are available, we can construct a climatological map of Europe. The results are reported in Fig 3 for the bin length of one year. Different climatic regions are well highlighted: the British Isles, Brittany, Italy and the coastal areas of the Iberic peninsula have milder climate with a significantly lower range of admissible anomalies. The highest excursions are admissible in continental Europe and in correspondence of mountains range. This explains the gradient in the central Iberic peninsula: one of the station, Navacerrada, is 1800 high and its admissible excursions range over 24 degree.

#### IV. FINAL REMARKS

The main achievement of this paper is to suggest a method for discriminating between real temperature extremes and natural climate variability by analyzing the recurrence properties of a given temperature at a certain location. The recurrence technique shows that the concept of natural climate variability is well associated to a precise time scale here directly controllable by tuning  $m$ . We can define the minimum return time around a certain temperature chosen as  $\zeta$ , the smallest  $m$  such that the method converges. In our analysis we can retain a sufficient number of maxima only for bin length shorter than 4 year so that we cannot study extremes of longer time intervals but we hope that the method will be tested to longer time series e.g. climate models

output. The applicability of this technique, originally developed for studying chaotic and low dimensional dynamical systems, relies on a careful analysis on the role of the noise introduced by the instrument which cannot be ignored in the study of time series. Moreover, by ana-

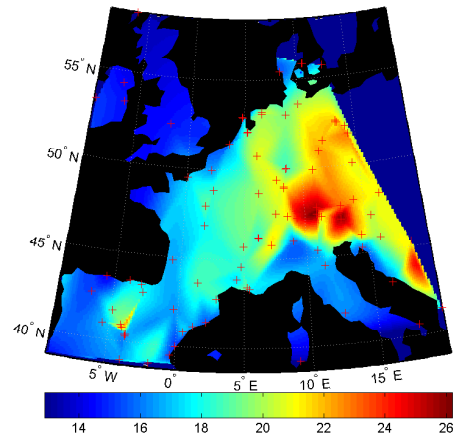


FIG. 3. Map of the range of *admissible anomalies* for the European region, obtained considering the interval of temperature anomalies  $\zeta$  such that the fit passes the Kolmogorov Smirnov test. The red crosses represent the location of the stations used for the analysis.

lyzing the anomalies of about 100 stations we can easily construct climatological maps of anomalies where differences between continental and mild, maritime climates are well highlighted. The method itself gives an estimate of the convergence in terms of deviation by a Gumbel law and, once the stationarity and the chaoticity of the series can be assumed, does not require any the computation of other properties of the series such as the embedding dimension. The method applicability is currently being tested on turbulence data-sets produced in laboratory experiments with encouraging results that will be reported in a future publication.

**Acknowledgement.** SV was supported by the ANR-Project *Perturbations*, by the PICS (Projet International de Coopération Scientifique), Propriétés statistiques des systèmes dynamiques déterministes et aléatoires, with the University of Houston, n. PICS05968 and by the projet MODE TER COM supported by *Région PACA, France*. SV thanks support from FCT (Portugal) project PTDC/MAT/120346/2010. The authors acknowledge Paul Manneville, Berengere Dubrulle and Emmanuel Virot for useful discussion and suggestions on the paper.

[1] Hollis G-E (1975) The effect of urbanization on floods of different recurrence interval. *Water Resour. Res.*

- [2] Shimazaki, Kunihiko, Takashi Nakata (1980) Time predictable recurrence model for large earthquakes. *Geophys. Res. Lett.* 7(4) : 279-282.
- [3] Sheppard C-RC (2003) Predicted recurrences of mass coral mortality in the Indian Ocean. *Nature* 425(6955) : 294-297.
- [4] Ghil, M., et al. Extreme events: dynamics, statistics and prediction. *Nonlin. Proc. in Geoph.* 18.3 (2011): 295-350.
- [5] Manneville P (2010) Instabilities, chaos and turbulence. Vol. 1. Imperial College Pr.
- [6] Takens F (1981) Detecting strange attractors in turbulence. *Dynamical systems and turbulence*, Warwick 1980. Springer Berlin Heidelberg, 1981. 366-381.
- [7] Klein Tank AMG, Zwiers FW, Zhang X (2009). Guidelines on analysis of extremes in a changing climate in support of informed decisions for adaptation. (WCDMP-72,WMO-TD/No. 1500) , 56.
- [8] Neftci, S-N (2000) Value at risk calculations, extreme events, and tail estimation. *J. Deriv.* 7(3) : 23-37.
- [9] Faranda D, Vaienti S. (2013) Extreme Value laws for dynamical systems under observational noise, preprint. noise
- [10] Poincaré H (1890) Sur la probleme des trois corps et les equations de la dynamique *Acta Mathematica* 13, 1-271 .
- [11] Leadbetter M-R, Lindgren G, and Rootzen H (1983) Extremes and related properties of random sequences and processes. Berlin Heidelberg New York: Springer.
- [12] Gnedenko, B (1943) Sur la distribution limite du terme maximum d'une serie aleatoire. *Ann. Math* 44(3) : 423-453.
- [13] Collet P (2001) Statistics of closest return for some non-uniformly hyperbolic systems. *Ergod. Theor. Dyn. Syst.* 21(2) : 401-420.
- [14] Freitas A-C-M, Freitas J-M, Todd M (2010) Hitting time statistics and extreme value theory. *Prob. Theory and Rel.* 147(3-4) : 675-710.
- [15] Freitas A-C-M, Freitas J-M, Todd M (2011) Extreme value laws in dynamical systems for non-smooth observations. *J. Stat. Phys.* 142(1): 108-126.
- [16] Freitas A-C-M, Freitas J-M, Todd M (2012) The extremal index, hitting time statistics and periodicity. *Advances in Mathematics* 231(5) : 2626-2665.
- [17] Gupta C (2010) Extreme-value distributions for some classes of non-uniformly partially hyperbolic dynamical systems. *Ergod. Theor. Dyn. Syst.* 30(3) : 757-771.
- [18] Lucarini V, Faranda D, Turchetti G, Vaienti S, (2012) Extreme value distributions for singular measures, *Chaos*, **22**, 023135.
- [19] Faranda, , Lucarini V., Turchetti G, Vaienti S. (2011). Numerical convergence of the Block Maxima approach to the Generalized Extreme Value distribution. To appear:*J. Stat. Phys.* 145-5: 1156-1180.
- [20] Faranda, D, Freitas, J-M, Lucarini V., Turchetti G, Vaienti S. (2012). Extreme value statistics for dynamical systems with noise. *Nonlinearity* 26 2597.
- [21] Wolf A, Swift J-B, Swinney H-L, Vastano J-A. (1985). Determining Lyapunov exponents from a time series. *Physica D: Nonlinear Phenomena*, 16(3), 285-317.
- [22] Lilliefors, H-W. (1967). On the Kolmogorov-Smirnov test for normality with mean and variance unknown. *Journal of the American Statistical Association*, 62(318), 399-402.
- [23] Eckmann, J-P., Ruelle D (1992) Fundamental limitations for estimating dimensions and Lyapunov exponents in dynamical systems *Physica D: Nonlinear Phenomena* 56(2) : 185-187.
- [24] Lorenz E-N (1991) Dimension of weather and climate attractors. *Nature* 353(6341):241-244.
- [25] Haylock M-R, Hofstra N, Klein Tank A-M-G, Klok E-J, Jones P-D, New M (2008) A European daily high resolution gridded data set of surface temperature and precipitation for 1950-2006. *J. Geophys. Res.: Atmospheres* (1984-2012), 113(D20).
- [26] Butler, C. J., et al. Air temperatures at Armagh observatory, northern Ireland, from 1796 to 2002. *Int. J. of Climatol.* 25(8) (2005): 1055-1079.
- [27] Maugeri, Maurizio, et al. Daily Milan temperature and pressure series (1763-1998): completing and homogenising the data. *Improved Understanding of Past Climatic Variability from Early Daily European Instrumental Sources*. Springer Netherlands, 2002. 119-149.
- [28] Böhm R, Auer I, Brunetti M, Maugeri M, Nanni T , Schöner W (2001) Regional temperature variability in the European Alps: 1760-98 from homogenized instrumental time series. *Int. J. of Climatol.* 21(14) (2001): 1779-1801.