



HAL
open science

Multi-ROI Association and Tracking With Belief Functions: Application to Traffic Sign Recognition

Mohammed Boumediene, Jean-Philippe Lauffenburger, Jérémie Daniel, Christophe Cudel, Abdelaziz Ouamri

► **To cite this version:**

Mohammed Boumediene, Jean-Philippe Lauffenburger, Jérémie Daniel, Christophe Cudel, Abdelaziz Ouamri. Multi-ROI Association and Tracking With Belief Functions: Application to Traffic Sign Recognition. IEEE Transactions on Intelligent Transportation Systems, 2014, 15 (6), pp.2470-2479. <10.1109/TITS.2014.2320536>. <hal-01123461>

HAL Id: hal-01123461

<https://hal.science/hal-01123461v1>

Submitted on 5 Mar 2015

HAL is a multi-disciplinary open access archive for the deposit and dissemination of scientific research documents, whether they are published or not. The documents may come from teaching and research institutions in France or abroad, or from public or private research centers.

L'archive ouverte pluridisciplinaire **HAL**, est destinée au dépôt et à la diffusion de documents scientifiques de niveau recherche, publiés ou non, émanant des établissements d'enseignement et de recherche français ou étrangers, des laboratoires publics ou privés.



HAL Authorization

Multi-ROI Association and Tracking With Belief Functions: Application to Traffic Sign Recognition

Mohammed Boumediene, Jean-Philippe Lauffenburger, Jérémie Daniel, Christophe Cudel,
and Abdelaziz Ouamri

Abstract—This paper presents an object tracking algorithm using belief functions applied to vision-based traffic sign recognition systems. This algorithm tracks detected sign candidates over time in order to reduce false positives thanks to data fusion formalization. In the first stage, Regions Of Interest (ROIs) are detected and combined using the Transferable Belief Model semantics. In the second stage, the Local Pignistic Probability algorithm generates the associations maximizing the belief of each pairing between detected ROIs and ROIs tracked by multiple Kalman filters. Finally, the tracks are analyzed to detect false positives. Thanks to a feedback loop between the Multi-ROI Tracker and the ROI detector, the solution proposed reduces false positives by up to 45% while computation time remains very low.

Index Terms—Data fusion, multi-target tracking, credal association, TSR.

Manuscript received... This work was supported by a PROFAS research fellowship granted by the Algerian and French governments.

M. Boumediene and A. Ouamri are with Laboratoire LSI, Université des Sciences et de la Technologie Mohamed Boudiaf, Oran, Algérie.

J.-P. Lauffenburger, J. Daniel, and C. Cudel are with Laboratoire MIPS-EA2332, Université de Haute Alsace, Mulhouse, France, e-mail: (firstname.lastname@uha.fr).

I. INTRODUCTION

Although traffic signs are designed to be clearly visible, they can be missed due to driver distraction or sign masking. This can be avoided by using Traffic Sign Recognition (TSR) systems. Indeed, they can inform the driver of a possibly missed traffic sign. Usually, vision-based TSR consists of a detection and a recognition (or classification) step [1]. In each frame, the detection localizes Regions Of Interest (ROIs) which may contain signs for instance based on shape detection [2] using the Hough transform [3] or Histograms of Oriented Gradients (HOG) [4]. The purpose of recognition is to identify the pictograms present in the ROIs, with the help of support vector machines, K-d trees [4], neural networks [5], etc. When detection and recognition are independently processed, TSR systems show known limitations - multiple detections for the same sign, misdetections due to temporal occlusions, wrong detections usually called “*false positives*” - which can be reduced by adding target tracking [6], [7]. Tracking helps to take account of temporal redundant information of the road scene, and thus allows TSR systems to track the signs over time [3], [8]. However, although tracking

provides obviously substantial benefits, its application to TSR is still unusual as shown in Møgelmoose et al. review paper [1].

One of the main tasks of target tracking concerns *data association*. It defines, at a time k , the relations between the set of perceived objects (*targets*) and the set of already known ones (*tracks*). Association methods are usually based on the Bayesian theory. They are either track-oriented such as (G)NN¹, (J)PDAF² [7] or target-oriented like MHT³ [9]. Track-oriented methods perform single frame associations and are mainly based on the *a priori* known track number. As a consequence, track appearances are not directly managed but can be possible through the computation of some specific measurements (likelihood ratio, observability measurement, etc.) for (J)PDA filters, for instance. MHT tracks objects over time and defers the assignment decision if ambiguities occur. At each time step, a decision tree containing all the hypotheses is updated and each hypothesis leads iteratively to a new decision tree, requiring important computation time.

Recently, the use of belief functions [10], [11] and the Transferable Belief Model (TBM) [12] for data association emerged [13]–[19]. One can particularly cite [14], [15] in which a comparison with Bayesian tracking solutions is presented and [16], [20] highlighting the fact that belief functions constitute a suitable and intuitive framework for data and imperfections modelling. They easily deal with the source ignorance and conflict without any assumptions on the sensor error models. This is the formal context of this article.

The present paper focuses on traffic sign detection

¹(G)NN: (Global) Nearest Neighbor.

²(J)PDAF: (Joint) Probability Data Association Filter.

³Multi-Hypothesis Tracking.

and tracking. The detection process, recently presented in [21], is based on corner and edge orientation detection in grey-scale images. The corners help to define the candidate positions (i.e. the ROIs) where the presence of signs is to be confirmed while the edge orientation informs about the sign candidate type (triangular, circular, etc.).

The detected ROIs are then spatio-temporally tracked using a TBM-based Multi-ROI Tracking (MRT) algorithm. The MRT considers the ROIs provided by the detector as information to be combined with the known tracks and thus allows their appearance, disappearance or evolution along time. The aim is to reduce the influence of sensor inaccuracies and false positives while maintaining a good detection rate. For the associated objects, a spatial data fusion using dynamically managed multiple Kalman Filters (KF) [22] both for their tracking and position prediction in the future frames is integrated to enhance detection performance. This MRT provides a global approach managing all targets and tracks whatever the association type (track-to-track, target-to-target, etc.) with a generalized combination rule allowing complexity reduction. In addition, it provides native mechanisms for track initialization, temporary occlusion and conflicting association management. The system has been implemented in a test vehicle. The results obtained show the benefits in terms of detection rate, false positive reduction and computation time, satisfactory real-time constraints.

The paper is organized as follows. Section II presents the system overview. The theoretical background of data association in the TBM is presented in Section III. Section IV details the proposed MRT and its experimental validation is presented in Section V. Finally, Section VI concludes this paper.

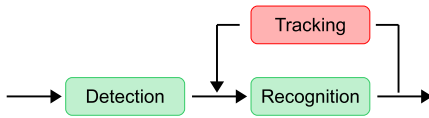


Fig. 1. Basic tracking-based TSR system architecture [1].

II. SYSTEM OVERVIEW

Tracking-based TSR systems are characterized by two architectures: *Detection-Recognition-Tracking* and *Detection-Tracking-Recognition*. In the first one, the temporal information is used after the *Recognition* (see Fig. 1) so that only the recognized signs are tracked in the future frames. *Tracking* consequently provides a memory [3] which makes the recognition of the tracked sign in subsequent frames unnecessary [23]. Several approaches have been adopted in the literature for the second architecture which performs the *Tracking* after the *Detection*. For instance, Fang *et al.* [24] track all detected ROIs until their respective size is sufficiently large for easy recognition while in [25], a classifier separates valid and invalid tracks by using spatio-temporal constraints.

This study adopts a *Detection-Tracking-Recognition* architecture. The system proposed combines *Detection* and *Tracking* in order to deal with temporary occlusions and false positive detections. It is composed of a ROI detector and a MRT algorithm (see Fig. 2). The ROI detection uses corner and edge orientation which helps to detect signs at the position candidates. This results in the generation of a set of traffic sign candidates (detected ROIs) which can contain false positives. To cope with this problem, the algorithm tracks the detected ROIs to provide filtered ROIs to *Recognition*. *Tracking* also feeds back to the detector the predicted position of ROIs (tracked ROIs in Fig. 2) in the subsequent frames. This feedback enhances the detection performance in variable

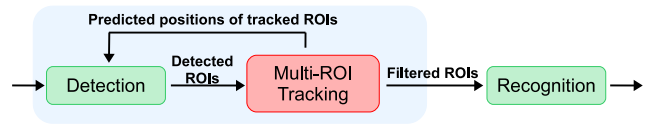


Fig. 2. Overview of the proposed system.

illumination conditions where corner detection can fail. The filtered ROIs represent tracked ROIs with a high confidence score.

This paper focuses on the association and tracking capabilities of the proposed MRT. It will be shown how belief functions provide an interesting framework for the problem description, good association and tracking performance while reducing the level of false positives.

A. ROI Detection

Fig. 3 describes the ROI detector. A traffic sign shape detector initially described and evaluated in [21] is implemented here. Singularities or angular edges of traffic signs are detected by the *Corner Detection* step and represent the position candidates of signs. Fig. 4 shows an example of the position candidates which are defined by the standard Harris corner detector [26]. For each corner, a candidate ROI is selected according to the shapes in the corner neighbourhood. Shape recognition is performed using a coded image where each pixel is defined according to edge orientations as depicted in Fig. 5. To recognize triangular shapes, the RANSAC Symmetric Line Detection (*RSLD*) algorithm from Boumediene *et al.* [21] is implemented. Its principle is extended with a *Template-Matching* process to circular shape detection.

B. Multi-ROI Tracking

The MRT algorithm is composed of three functions: *Filtering*, *Data Association* and *ROI life analysis* (see Fig. 6). *Filtering* performs target tracking by predicting

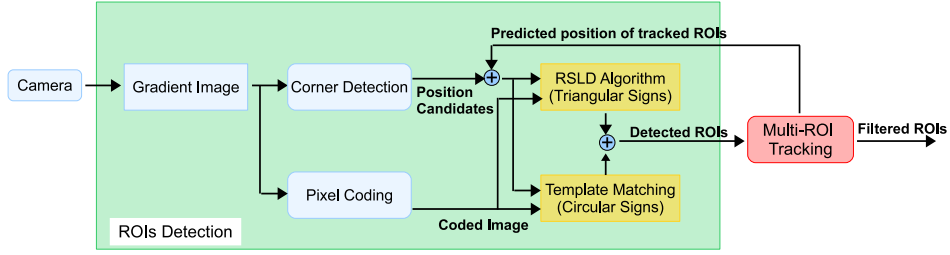


Fig. 3. Block-diagram of the ROI detector.



Fig. 4. Examples of detected corners related to traffic signs.

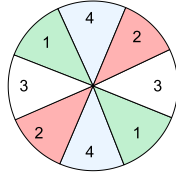


Fig. 5. Segmentation of the orientation space (from [21]). Classes 3 and 4 represent horizontal and vertical pixel edges respectively. Classes 1 and 2 describe diagonal pixel edges. The non-edge pixel is considered as class 0.

the future position of the tracked ROIs in the frames. *Data Association* assigns one target provided by the detector to a track and manages the track creation/deletion. *ROI life analysis* uses the temporal context to validate/reject the tracks transmitted to *Recognition*. Traffic sign candidates provided by the *Detection* define the targets of the MRT. The tracked ROIs define the tracks to be filtered so as to reduce false positives.

For the track *State Estimation*, the well-known KF [22] has been adopted as it is one of the most efficient methods. The filter predicts the states of the tracked ROIs from the previous states. These predictions

are transmitted to the detector as *a priori* information to influence future searches. Indeed, predicted positions are added to the position candidates which are defined by the corner detector. In addition, the filter updates the states of the tracked ROIs based on the association results.

Data Association consists of three subtasks: *Gating*, *Association* and *Track Maintenance*. First, *Gating* eliminates the improbable target-to-track pairings to reduce the computational complexity of *Association*. This can be done considering, for instance, a distance criterion between the targets and the tracks. *Association* defines, at a time k , the relations between targets and tracks. Noisy environments with uncertain measurements make joint association and tracking a challenging task, especially in multiple target scenarios, when their number is unknown and temporally variable. Uncertainty also occurs when targets are close to each other, and so can fall simultaneously into multiple gates. These conditions involve ambiguities and contradictions in the association since targets could be associated with multiple tracks and *vice versa*.

The association is done through an evidential data fusion process to consider and propagate these uncertainties as well as sensor imperfections and reduce false detections. *Track Maintenance* analyzes the selected target-to-track pairs to detect appearances and disappearances. A track appearance/disappearance leads respectively to

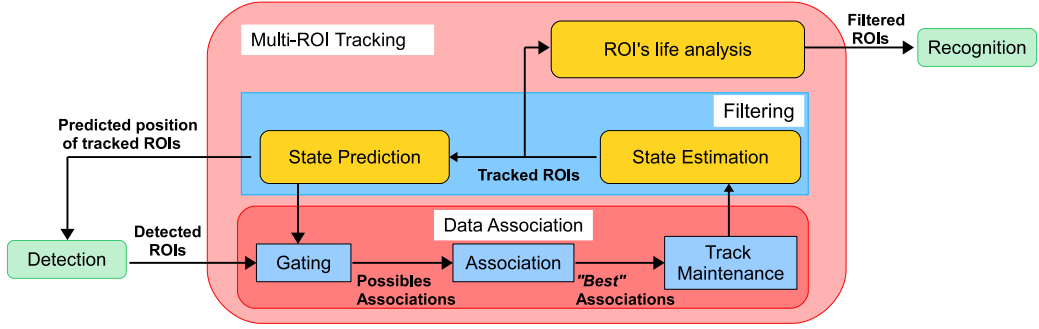


Fig. 6. Block-diagram of the MRT algorithm.

adding/deleting a KF. However, traffic signs do not suddenly appear and disappear in frames. Therefore, the analysis of the track temporal evolution helps to detect false positives. Indeed, based on the track properties such as its length (number of frames where the track considered is present), a confidence score is defined. A tracked ROI with a low confidence value is considered as a false positive and thus ignored. Otherwise, it is forwarded to the *Recognition* step. On the other hand, disappearance is confirmed if no target is assigned to the track several times at a stretch.

The next sections will show that credal association and tracking is able to reduce the false positive rate while keeping a high detection rate. This result is reproducible, whichever traffic sign detector is used.

III. DATA ASSOCIATION IN THE TBM

A. Transferable Belief Model: Basic Concepts

The TBM is a subjective and non-probabilistic interpretation of the evidence theory [10], [11]. This framework describes a model of uncertain reasoning and decision making based on a credal and a pignistic level. At the credal level, belief masses are used to represent and combine the pieces of information while at the pignistic level, these masses are transformed into probability measurements for decision making.

1) *Credal level*: Consider a problem for which all the discrete solutions (also called hypotheses) $H_j, j = 1, 2, \dots, k$, with k the number of possible hypotheses, define the *frame of discernment* Θ :

$$\Theta = \{\{H_1\}, \{H_2\}, \dots, \{H_k\}\} = \bigcup_{j=1}^k \{H_j\}. \quad (1)$$

Θ is the ignorance, i.e. the union of all hypotheses. Its corresponding *referential subset*, a power set denoted 2^Θ of 2^k disjunctions of H_j is such that:

$$2^\Theta = \{\emptyset, \{H_1\}, \dots, \{H_k\}, \dots, \{H_1, H_2, H_3\}, \dots, \Theta\}, \quad (2)$$

where \emptyset represents the impossible hypothesis commonly interpreted as the conflict between sources. A proposition $A = \{H_1, H_2\}$ refers to the disjunction “ H_1 or H_2 ” and means that either $\{H_1\}$ or $\{H_2\}$ can be the solution to the problem. Each proposition A of 2^Θ provided by a source i is characterized by its *basic belief mass* (*bbm*) $m_i^\Theta(A)$ which represents its veracity:

$$m_i^\Theta : 2^\Theta \rightarrow [0, 1], \sum_{A \in 2^\Theta} m_i^\Theta(A) = 1. \quad (3)$$

When the k answers are exclusive and exhaustive, the solution to the problem is one of the hypotheses of Θ and a mass on \emptyset is not allowed. Practically, in applications such as target tracking, this assumption is often too restrictive. Indeed, all possible associations cannot be

identified *a priori* since targets can appear/disappear over time. Hence the suggestion of two other frameworks: the “open world” [12] and the “extended open world” [19]. In the open world, Θ is exclusive but not exhaustive so that a mass $m_i^\Theta(\emptyset) > 0$ is possible. In this case, \emptyset represents a reject class which describes the unknown hypotheses not taken into account during the problem formalization. The non-exhaustivity of the discernment frame can be managed by adding to Θ an alternative hypothesis $\{*\}$ representing all unknown propositions not explicitly defined in Θ [19]. This singleton allows the new discernment frame Θ_{eow} to become exhaustive (cf. (4)). A non zero value of $m_i^{\Theta_{eow}}(\emptyset)$ is then only linked to the sources unreliability or to their discordance.

$$\Theta_{eow} = \Theta \cup \{*\} \quad (4)$$

The combination gathers the different sources *bbm*. Beside all the existing operators [20], the conjunctive combination rule is the most straightforward [27]. For p sources to be combined, it is expressed as:

$$\begin{cases} m_\cap^\Theta(A) &= \sum_{A_1 \cap \dots \cap A_p = A} \prod_{j=1}^p m_j^\Theta(A_j), \\ m_\cap^\Theta(\emptyset) &= \sum_{A_1 \cap \dots \cap A_p = \emptyset} \prod_{j=1}^p m_j^\Theta(A_j). \end{cases} \quad (5)$$

2) *Pignistic level*: Finding the association relations consists in making a decision among all the possible hypotheses of the problem given. Usually, the decision is made in Θ , i.e. on simple hypotheses H_j . Nevertheless, after the combination (see (5)), masses are placed either on singleton hypotheses ($|A| = 1$) or on unions ($|A| > 1$). It appears that a transformation from 2^Θ to Θ is necessary. Among all the transformations available, the pignistic one [28] is commonly used. It is built as a probabilistic rule and shares the mass of A on its singletons. The pignistic probability (*BetP*) is given by

(6), with $m_\cap^\Theta(\emptyset) < 1$:

$$BetP(H_j) = \sum_{\substack{A \in 2^\Theta \\ H_j \in A}} \frac{m_\cap^\Theta(A)}{|A|(1 - m_\cap^\Theta(\emptyset))}. \quad (6)$$

B. Object Association: Problem Formalization

In tracking algorithms using TBM, the association task is observed from two different points of view [18]: target-to-track and track-to-target associations. This leads to the definition of two extended open worlds $\Theta_{i..}$ and $\Theta_{..j}$ ⁴, $i = 1, \dots, n$, with n the number of targets, and $j = 1, \dots, m$, with m the number of tracks at time k . The frame $\Theta_{i..}$ contains the m possible target(i)-to-track(j) associations denoted $\{Y_{(i,j)}\}$, and $\{Y_{(i,*)}\}$ represents the appearance of target(i)⁵. The frame $\Theta_{..j}$ is composed of the n possible track(j)-to-target(i) assignments denoted $\{X_{(j,i)}\}$, and $\{X_{(j,*)}\}$ represents a track deletion:

$$\begin{aligned} \Theta_{i..} &= \{\{Y_{(i,1)}\}, \{Y_{(i,2)}\}, \dots, \{Y_{(i,m)}\}, \{Y_{(i,*)}\}\}, \\ \Theta_{..j} &= \{\{X_{(j,1)}\}, \{X_{(j,2)}\}, \dots, \{X_{(j,n)}\}, \{X_{(j,*)}\}\}. \end{aligned} \quad (7)$$

The question which is then raised is: “Is target X_i associated with track Y_j ?”. To this question, three answers are possible: either they are associated or not, or the assignment is unclear. Within the TBM, these solutions will be described by three belief masses over $\{Y_{(i,j)}\}$, over its contrary $\overline{\{Y_{(i,j)}\}}$ and over the ignorance $\Theta_{i..}$ so that:

- $m_j^{\Theta_{i..}}(\{Y_{(i,j)}\})$: belief in “ X_i is associated with Y_j ”,
- $m_j^{\Theta_{i..}}(\overline{\{Y_{(i,j)}\}})$: belief in “ X_i is not associated with Y_j ”,

⁴The exact denotation should be $\Theta_{eow_{i..}}$ and $\Theta_{eow_{..j}}$ but for clarity reasons the reference to the “extended open world” (*eow*) has been removed.

⁵The association of a target with the hypothesis $\{*\}$ corresponds to the fact that no track is assigned to the target considered.

- $m_j^{\Theta_{i..}}(\Theta_{i..})$: ignorance about the association.

The belief masses $m_i^{\Theta_{..j}}(\{X_{(j,i)}\})$, $m_i^{\Theta_{..j}}(\overline{\{X_{(j,i)}\}})$ and $m_i^{\Theta_{..j}}(\Theta_{..j})$ are generated for the track-to-target associations in the same way. It is worth noting that no information is initially considered on $\{Y_{(i,*)}\}$ and on $\{X_{(j,*)}\}$. These masses appear during combination. This finally leads to an $n \times m$ dimension assignment problem to be solved at each time step in order to define the association relations. The *bbms* are then combined with the conjunctive rule (5) over each discernment frame $\Theta_{i..}$ and $\Theta_{..j}$, generating masses $m^{\Theta_{i..}}$ (and $m^{\Theta_{..j}}$) over $2^{\Theta_{i..}}$ and $2^{\Theta_{..j}}$ [19]:

$$m^{\Theta_{i..}}(\{Y_{(i,j)}\}) = m_j^{\Theta_{i..}}(\{Y_{(i,j)}\}) \prod_{\substack{a=1 \\ a \neq j}}^m \alpha_{(i,a)}$$

$$m^{\Theta_{i..}}(\{Y_{(i,j)}, Y_{(i,l)}\}) = m_j^{\Theta_{i..}}(\Theta_{i..}) m_l^{\Theta_{i..}}(\Theta_{i..}) \prod_{\substack{a=1 \\ a \neq j \\ a \neq l}}^m \beta_{(i,a)}$$

and for union combinations of 2 to $m - 1$ hypotheses:

$$m^{\Theta_{i..}}(\{Y_{(i,j)}, \dots, Y_{(i,l)}\}) = \gamma_{(i,(j,\dots,l))} \prod_{\substack{a=1 \\ a \neq j \\ \dots \\ a \neq l}}^m \beta_{(i,a)}$$

$$m^{\Theta_{i..}}(\{*\}) = \prod_{a=1}^m \beta_{(i,a)}$$

$$m^{\Theta_{i..}}(\overline{\{Y_{(i,j)}\}}) = m_j^{\Theta_{i..}}(\overline{\{Y_{(i,j)}\}}) \prod_{\substack{a=1 \\ a \neq j}}^m m_a^{\Theta_{i..}}(\Theta_{i..})$$

$$m^{\Theta_{i..}}(\Theta_{i..}) = \prod_{a=1}^m m_a^{\Theta_{i..}}(\Theta_{i..}) \quad (8)$$

$$m^{\Theta_{i..}}(\emptyset) = 1 - \left[\prod_{a=1}^m \alpha_{(i,a)} + \sum_{a=1}^m m_a^{\Theta_{i..}}(\{Y_{(i,a)}\}) \prod_{\substack{b=1 \\ b \neq a}}^m \delta_{(i,b)} \right]$$

TABLE I
TARGET-TO-TRACK PIGNISTIC PROBABILITIES

$BetP_{i..}(\cdot)$	Y_1	...	Y_m	*	\emptyset
X_1	$BetP_{1..}(Y_{(1,1)})$...	$BetP_{1..}(Y_{(1,m)})$	$BetP_{1..}(*)$	$BetP_{1..}(\emptyset)$
X_2	$BetP_{2..}(Y_{(2,1)})$...	$BetP_{2..}(Y_{(2,m)})$	$BetP_{2..}(*)$	$BetP_{2..}(\emptyset)$
\vdots	\vdots	\vdots	\vdots	\vdots	\vdots
X_n	$BetP_{n..}(Y_{(n,1)})$...	$BetP_{n..}(Y_{(n,m)})$	$BetP_{n..}(*)$	$BetP_{n..}(\emptyset)$

with:

$$\begin{cases} \alpha_{(i,a)} = \left(1 - m_a^{\Theta_{i..}}(\{Y_{(i,a)}\})\right), \\ \beta_{(i,a)} = \left(m_a^{\Theta_{i..}}(\overline{\{Y_{(i,a)}\}})\right), \\ \gamma_{(i,(j,\dots,l))} = m_j^{\Theta_{i..}}(\Theta_{i..}) \dots m_l^{\Theta_{i..}}(\Theta_{i..}), \\ \delta_{(i,b)} = \left(1 - m_b^{\Theta_{i..}}(\{Y_{(i,b)}\})\right). \end{cases}$$

In order to make a decision, the pignistic transformation (6) is performed over the masses from (8). This leads to two pignistic matrices $BetP_{i..}(\{Y_{(i,j)}\})$ and $BetP_{..j}(\{X_{(j,i)}\})$, as shown in Table I for the target-to-track association. Each line defines the association probabilities of X_i with $Y_1, \dots, Y_m, *$. The association of a target X_i or a track Y_j with $*$ defines respectively the appearance/disappearance of a track. The column of the empty set \emptyset defines the conflict in the target or track association considered. Usually, the conflict $m^{\Theta_{i..}}(\emptyset)$ is redistributed through the normalization of the pignistic probability (see (6)). Nevertheless, as in other studies [13], [17], [29], the authors use a non-normalized form (9). Because of its informative aspect for decision-making [20], the conflict is conserved especially for the detection of association ambiguities or contradictions.

$$\begin{cases} BetP_{i..}(\{Y_{(i,j)}\}) \triangleq \sum_{\substack{A \in 2^{\Theta_{i..}} \\ Y_{(i,j)} \in A}} \frac{m^{\Theta_{i..}}(A)}{|A|} \\ BetP_{i..}(\emptyset) \triangleq m^{\Theta_{i..}}(\emptyset) \end{cases} \quad (9)$$

The formalization of (9) to the multi-object association problem can be found in [17]. Decision making is based on these pignistic matrices. In the literature, several algorithms are proposed for selecting the “best” associations

regarding global decision cost functions [13]. Generally, and it will be the case in this work, they consider the following constraints [18]:

- a target can only be associated with one track and *vice versa*,
- multiple existing tracks can disappear,
- multiple new tracks can appear.

IV. MULTI-ROI ASSOCIATION AND FILTERING

A. Track Filtering

Tracking a moving target can be viewed as the observation of a dynamic system. That is why the straightforward solution employed in computer-vision tracking applications is the KF [22]. Usually, a tracking filter is derived in terms of a recursive (linear) estimator. It recursively computes the estimates of the object l -dimensional state vector $X_j(k) \in \mathbb{R}^l$ by a combination of the previous estimates and new object observations $Z_i(k) \in \mathbb{R}^p$. For this purpose, a dynamic (motion) model and a measurement model are employed:

$$\begin{aligned} X_j(k) &= FX_j(k-1) + w(k), \\ Z_i(k) &= HX_j(k) + v(k). \end{aligned} \quad (10)$$

F is the $l \times l$ state transition matrix based on the chosen track motion model. It is assumed that the model and measurement noises w and v are independent and identically distributed random noises. The state noise w is a white Gaussian l -dimensional process with zero mean and covariance Q denoted $w \sim \mathcal{N}_l(0, Q)$ and $v \sim \mathcal{N}_p(0, R)$. The measurement model relates the state $X_j(k)$ to the observation $Z_i(k)$ with the measurement matrix $H \in \mathbb{R}^{p \times l}$. For a given frame k , the detector provides a set \mathcal{Z} of ROI candidates which represents the n targets defined by the measurements $Z_i(k) \in \mathcal{Z}$. Assume that the state evolution model behaves linearly with respect to the track motion and that the observations

$Z_i(k)$ and states $X_j(k)$ are linearly dependent, leading to (10). According to the data association results at time k , KFs corresponding to existing tracks are updated and new filters are created for appearing tracks. The number m of KFs depends on the number of tracked ROIs.

The 2D motion of objects in a video sequence is strongly related to the camera motion and to their own displacement. In TSR applications, only the camera motion has to be considered since the objects are static. A steady-state vehicle movement is assumed, characterized by low velocity variations with respect to the sampling rate of the system (> 15 fps). Moreover, the angle between the line of sight of the camera and the vehicle direction is sufficiently small so that the sign size s in the image can be considered as constantly increasing. In this context, the nearly constant velocity model (12) represents a globally satisfactory motion model and a classic choice for tracking applications [3], [8], [30]. The state vector $X_j(k)$ of a track(j) is such that:

$$X_j(k) = [x, y, s, v_x, v_y, v_s]^T, \quad (11)$$

where $[x, y]$ define the position and s the size of the tracked ROI j in the image coordinate frame, $[v_x, v_y]$ the track(j) relative velocities between two successive frames and v_s the scale change. Thanks to the high sampling time of the MRT, the scale variation $v_s(k)$ and the position variations $[v_x(k), v_y(k)]$ of the traffic signs are considered similar to the previous ones and only due to Gaussian noises:

$$\begin{cases} x(k) = x(k-1) + v_x(k), \\ y(k) = y(k-1) + v_y(k), \\ s(k) = s(k-1) + v_s(k). \end{cases} \quad (12)$$

$$\text{with : } \begin{cases} v_x(k) \sim \mathcal{N}(v_x(k-1), \sigma_x^2), \\ v_y(k) \sim \mathcal{N}(v_y(k-1), \sigma_y^2), \\ v_s(k) \sim \mathcal{N}(v_s(k-1), \sigma_s^2). \end{cases} \quad (13)$$

$Z_i(k)$ is a $p \times 1$ vector defined by:

$$Z_i(k) = [x, y, s]^T. \quad (14)$$

Three processing steps are possible for a given track: creation, update, and deletion. The appearance decision (depending on $BetP_{i..}(\{Y_{(i,*)}\})$) creates a new filter j . Its state vector $x_j(k)$ is initialized by the observation $Z_i(k)$ of the newly detected ROIs. The initial displacement and scale change are set to 0. An association between an existing track and a target leads to the track update. In addition, the update step helps to increment a count $c_{update}(j)$ related to track(j) which will be used to remove the false positives. The disappearance decision (related to $BetP_{.,j}(\{X_{(j,*)}\})$) follows a non association between the targets and the track considered. The track predicted state $\hat{x}_j(k)$ is propagated into filter j with no correction (15). A track deletion occurs following three consecutive disappearances. $\hat{x}_j(k)$ is fed back to *Detection* as *a priori* search positions of the given signs in the coming images in order to reduce the ROI search space and time.

$$\begin{aligned} \hat{x}_j(k) &= FX_j(k-1) \\ \hat{P}_j(k) &= FP_j(k-1)F^T + Q \end{aligned} \quad (15)$$

$\hat{P}_j(k)$ defines the predicted error covariance matrix of filter j and $P_j(k-1)$ its error covariance matrix in frame $k-1$.

The false positive reduction is performed through a track-related confidence score $C(j)$ defined by the ratio between the update count $c_{update}(j)$ and the length of the track:

$$C(j) = \frac{c_{update}(j)}{length(j)}, \quad (16)$$

with $c_{update}(j)$ the number of frames where ROI j is confirmed and $length(j)$ the total frame number where object j is present. A false positive occurs when $C(j)$ is lower than a predefined threshold $T_{confidence}$, otherwise

the object j is valid and becomes a ROI forwarded to the *Recognition*.

B. Data Modelling in the TBM

There are several solutions to describe the *bbms* $m_j^{\Theta_{i..}}$ and $m_i^{\Theta_{.,j}}$ related to $\{Y_{(i,j)}\}$ and $\{X_{(j,i)}\}$. One model considers for instance non-antagonistic propositions in which $m_j^{\Theta_{i..}}(\{Y_{(i,j)}\})$ and $m_j^{\Theta_{i..}}(\overline{\{Y_{(i,j)}\}})$ cannot simultaneously be non-zero in order to avoid intrinsic conflict [13], [18], [20]. In this paper, the masses defined respectively on $\Theta_{i..}$ and $\Theta_{.,j}$ are described according to [31]:

$$\begin{cases} m_j^{\Theta_{i..}}(\{Y_{(i,j)}\}) = \alpha_j \exp^{-d_{ij}^2}, \\ m_j^{\Theta_{i..}}(\overline{\{Y_{(i,j)}\}}) = \alpha_j(1 - \exp^{-d_{ij}^2}), \\ m_j^{\Theta_{i..}}(\Theta_{i..}) = 1 - \alpha_j, \end{cases} \quad (17)$$

where:

- $0 < \alpha_j < 1$ represents the reliability of source j ,
- d_{ij} is the dissimilarity measurement between target(i) detected at time k and track(j) already known at time k .

d_{ij} characterizes the level of confidence that target(i) corresponds to track(j). For the purpose of ROI tracking, d_{ij} is chosen as the Mahalanobis distance [7] between track(j) and target(i):

$$d_{ij}^2 = \tilde{z}_{ij}^T S^{-1} \tilde{z}_{ij}, \quad (18)$$

with S the residual covariance matrix and \tilde{z}_{ij} the innovation of filter j . In (17), the choice of a monotone decreasing function of d_{ij} leads to the belief reduction in the association of target(i) to track(j) when the distance between the objects is large. On the contrary, if the dissimilarity measurement is low, their association is more probable. It can be noted that d_{ij} depends on the tracking filter covariance, so that the belief depends on the prediction and tracking performance.

Algorithm 1 Local Pignistic Probability (LPP($BetP$))**Require:** Pignistic matrix $BetP$ **Ensure:** Decision vector containing the “best” associations $\{Associations\} \leftarrow \{\}$ **for** all lines of $BetP$ **do** $(i_{max}, j_{max}) = \arg \max(BetP(i, j))$ $\{Associations\} \leftarrow \binom{(i,j)}{(i_{max}, j_{max})}$ Remove i_{max} row and j_{max} column from $BetP$ **end for***C. Pignistic Association Algorithm*

In [17], a review of the state-of-the-art credal association algorithms is proposed. It shows that with a global (sub-optimal) cost optimization, suspicious associations could be selected. To cope with this problem, local optimization solutions have been proposed. In the MRT, decision making is based on the Local Pignistic Probability algorithm (cf. Algorithm 1) [17]. This algorithm is applied to each pignistic matrix $BetP_{i,\cdot}$ ($BetP_{\cdot,j}$) and performs a successive line-wise selection of the n (or m) local maximum in the pignistic matrix. Compared to other algorithms, the LPP has the advantage of generating decisions directly from the pignistic matrices with no extra-calculations. A major consequence is its ability to be used in real-time applications. Furthermore, the LPP is shown to be less conservative than other association solutions. A complete description and evaluation of this algorithm can be found in [17].

An overview of the MRT algorithm is shown in Algorithm 2. After the *basic belief assignment* and the *bbms* combination (steps 1 and 2), the best target-to-track and track-to-target associations are generated by the LPP (step 3). Track maintenance (step 4) manages track appearance and disappearance. The update step of

Algorithm 2 Multi-ROIs Tracking (MRT(Z_i))**Require:** Detected ROIs $Z_i(k)$, $i = 1, \dots, n$ **Ensure:** Predicted position $\hat{x}_j(k+1)$, $j = 1, \dots, m$ of the tracked and filtered ROIs

// 1. Basic Belief Assignment

for all measurements $Z_i(k)$ **do****for** all predicted ROIs $\hat{x}_j(k)$ **do** $d_{ij}^2 \leftarrow \text{getDistance}(Z_i(k), \hat{x}_j(k))$ (18)Compute $m_j^{\ominus i,\cdot}$ and $m_i^{\ominus \cdot,j}$ (17)**end for****end for**// 2. Mass combination and $BetP$ computationCompute $m^{\ominus i,\cdot}$, $m^{\ominus \cdot,j}$, $BetP_{i,\cdot}$, $BetP_{\cdot,j}$ (8) and (9)

// 3. Target-to-track and track-to-target associations

 $\{Y\} \leftarrow \text{LPP}(BetP_{i,\cdot})$ and $\{X\} \leftarrow \text{LPP}(BetP_{\cdot,j})$

// 4. Track maintenance

AddNewTrack($\{Y\}$)

and

ConfirmTrackDisappearance($\{X\}$)

// 5. Update the state of the tracked ROIs

UpdateKalmanFilters()

// 6. ROI evolution analysis

while $j \leq m$ **do****if** $C(j) > T_{confidence}$ **then** $\{\text{filtered ROIs}\} \leftarrow x_j(k)$ **end if****end while**

the tracking filters is performed in step 5 depending on the assignment decisions and available observations $Z_i(k)$. To deal with false positives, the evolution of the tracked ROIs is analyzed (step 6).

V. EXPERIMENTAL RESULTS

This section presents the results obtained during real-time experiments performed with a fully equipped test vehicle. First, the configuration of the system and im-

plementation details are presented; then, a quantitative analysis presents the performance rates of the MRT. In order to give a realistic idea of the system performance in real conditions and help to understand the quantitative results, a video (video_IEEE.wmv) is also provided.

A. System Configuration

The vehicle-mounted camera is a 12-bit grey scale ECK-100 from *Sensata Technologies* providing VGA images (640×480 pixels, 25 fps) of the vehicle front scene. The MRT system is written in C++ with the OpenCV 2.4 library. It runs on an Intel core *i7 2.20 GHz* with 8 GB RAM under Windows Seven 64 bits. The critical parameters of the application are: $T_{confidence} = 0.85$ (confidence threshold of the track evolution rate $C(j)$), $\alpha_j = 0.9$ (discounting factor of the *bbm*), $m_{max} = 10$ (maximal number of KFs), $(\sigma_x, \sigma_y, \sigma_s) = (2, 2, 3)$ (standard deviations of the Kalman motion model), the minimum size of a ROI to be detected is 20×20 pixels. The performance of the MRT refers to its capacity to reduce the false positives while maintaining a high detection rate. Consequently, this section focuses on the Detection Rate Per Frame (DRPF), the False Positive Per Frame (FPPF), and the Detection Rate Per Sign (DRPS) for system evaluation. A system output is defined as a true positive if it can be matched with the ground truth, and as a false positive otherwise. A tracked target is correct if a sign candidate is forwarded to the recognition step more than $N = 3$ successive times. The DRPF, DRPS and FPPF are defined as:

$$\begin{aligned}
 DRPF &= \frac{\text{Number of true positives}}{\text{Ground Truth}} \cdot 100, \\
 DRPS &= \frac{\text{Number of correct detections}}{\text{Total Sign Number}} \cdot 100, \\
 FPPF &= \frac{\text{Number of false positives}}{\text{Total Frame Number}}.
 \end{aligned} \tag{19}$$

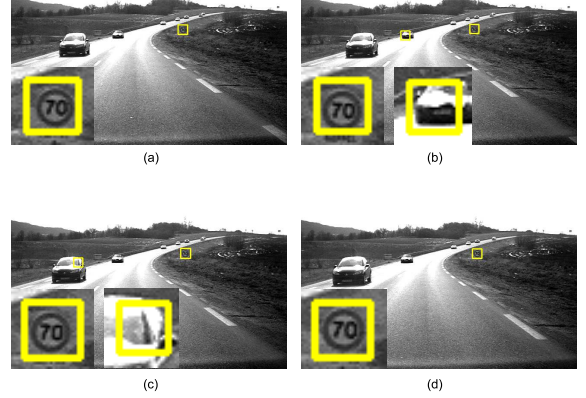


Fig. 7. Detection results without MRT in successive frames. (a) and (d) Correct sign detection. (b) and (c) Presence of false positives.

B. Quantitative Results

The MRT performance is evaluated with respect to the ground truth of the two video sequences described in Table II. These sequences have been annotated empirically so that, in each frame, the positions of signs having between 20×20 pixels and 60×60 pixels are defined. The first sequence (12 500 frames) mainly concerns departmental roads and motorways with several lane changes, and thus presents large vehicle speed variations. 42 traffic signs appear in 1 452 frames. The second video (6 250) contains even more various scenarios since all French road types are represented with a larger ratio of speeds under 90 km/h. This variety is confirmed by the high ratio of signs with respect to its length. These signs are present in 1 031 frames.

Fig. 7 gives a qualitative view of detection results without MRT on consecutive frames. In frames (b) and (c), two false positives can be observed. As they occur suddenly and do not remain visible over time, these are typical examples of wrong detections which can be removed by the MRT. Fig. 8 (Top) shows a short sequence of circular sign detection with no feedback

TABLE II
TEST SEQUENCES ON FRENCH ROADS

	Video 1	Video 2
Number of frames	12 500	6 250
Length (km)	9.3	5.2
Motorway (%)	26.3	7.7
National (%)	0.0	27.3
Departmental (%)	73.7	64.9
City (%)	20.2	16.2
Number of circular signs	31	18
Number of triangular signs	11	13
Min Vehicle Speed (km/h)	0	50
Max Vehicle Speed (km/h)	110	110
Speed < 90 km/h (%)	20.9	45.7
Occlusions (partial/total)	14(13/1)	3(1/2)
Lane change (exits)	8(3)	4(3)

between *Tracking* and *Detection*. In frame (a), the sign is correctly detected. However, in frames (b) and (c), the corner detection fails and so misses the circular sign twice. This drawback is solved by the prediction task of the MRT and the feedback of the tracked ROIs (see Fig. 8 (Bottom)) providing the detector with potential search positions.

At first, a comparison of the proposed MRT with Detection-Tracking-Recognition approaches from [32]–[34] and evaluated in [1] is proposed in table III. Some properties of these systems are given in table IV as they are presented in [1]. One may note that a direct metric comparison is inappropriate since each method is evaluated considering specific data sets and sometimes different metrics. For instance in [33] and [34], two measurements are used to evaluate the FP: the Positive Predictive Value ($PPV = TP/(TP + FP)$) and the False Positive Rate ($FPR = FP/N$ where N is the number of negative examples in dataset). Unlike the FPPF, the PPV is influenced by the number of frames

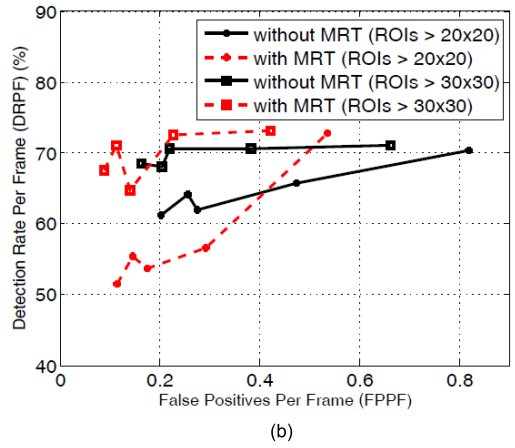
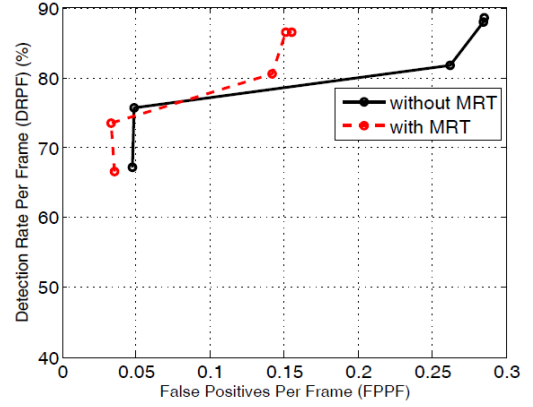


Fig. 9. Receiver Operating Characteristic (ROC) curves without and with MRT for circular (a) and triangular (b) signs.

where signs are present. Consequently, it is difficult to compare the proposed method with [34] as the authors do not give any information about the 34 sequences used. Moreover, the FPR is rarely used as the negative number does not make sense [1]. Considering these limitations, the proposed solution presents interesting performance with a low FPPF (0.16) and a high DRPF (89.92). The Mean DRPF and Mean False Positives (more accurate since they show the results for different sign types) already highlight the good results of the MRT.

Table V shows that the circular and triangular sign detector alone (denoted \overline{MRT}) provides respectively

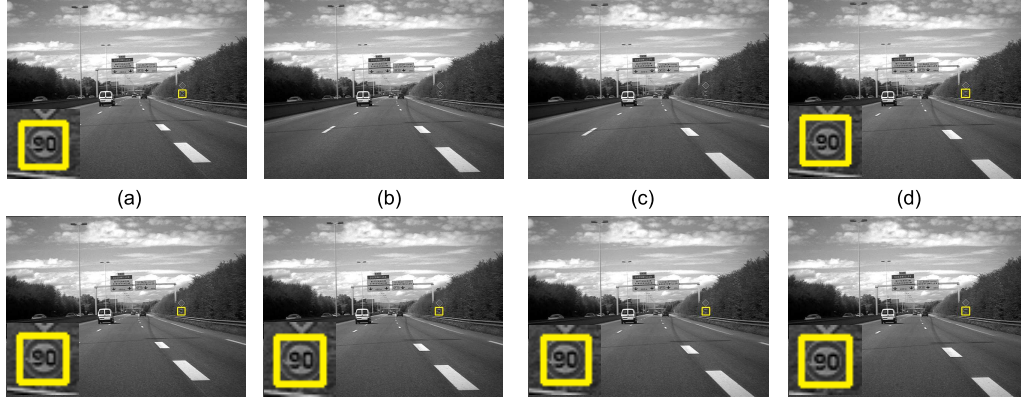


Fig. 8. Impact of the candidate position prediction feedback in 4 successive frames. (Top) Without feedback. (Bottom) With feedback.

TABLE III
COMPARISON BETWEEN MRT AND STATE-OF-THE-ART DETECTION-TRACKING-RECOGNITION ALGORITHMS

Paper	Evaluation data format	Number of positive ROIs	Best detection rate (DRPF)(%)	False positives for best DRPF	Mean DRPF	Mean false positives
[32]	2134 images from videos	3298	94.03	FPPF: 3.41	-	-
[33]	2967 images from videos	4886	90.1	PPV: 85.6%	-	-
[34]	Images from 34 videos	N/A	87.12	FPR: 0.14%	-	-
Our paper	18000 images from two videos	2850	89.92	FPPF: 0.16	74.19	FPPF: 0.13

TABLE IV
PROPERTIES OF SELECTED DETECTION-TRACKING-RECOGNITION ALGORITHMS

Paper	Sign type detected	Real-time	Rotation inv.	Model vs. training	Test image type
[32]	Circular red and blue	Yes	Yes	Both	Low-res
[33]	Circular red	No	Yes	Training	Low-res
[34]	Circular	Yes	Yes	Model	Low-res
Our paper	Circular, triangular, and yield signs	Yes	Yes	Model	Low-res

87% and 91% of DRPS for Sequence 1 with 0.28 and 0.26 of FPPF. Slightly better results are obtained in Sequence 2. In addition, it is clearly visible that the MRT reduces the false positives by more than 45% while keeping substantially similar levels of DRPF and DRPS. This lowers the amount of useless data provided

to the recognition step, and thus reduces the global TSR computational time. Fig. 9 presents more details about the MRT influence on the detection step. These Receiver Operating Characteristic (ROC) curves are created by plotting the DRPF with respect to the FPPF, considering various system configurations with and without the MRT.

TABLE V
PERFORMANCE RATES FOR SEQUENCE 1 AND 2

	Sequence 1		Sequence 2	
	\overline{MRT}	MRT	\overline{MRT}	MRT
Circular sign				
<i>DRPS</i> (%)	87	87	95	95
<i>DRPF</i> (%)	87.95	86.55(-2%)	92.81	93.3(+0.5%)
<i>FPPF</i>	0.28	0.15(-46%)	0.27	0.17(-37%)
Triangular sign				
<i>DRPS</i> (%)	91	91	100	100
<i>DRPF</i> (%)	64.15	55.37(-14%)	69.54	61.56(-11%)
<i>FPPF</i>	0.26	0.14(-46%)	0.11	0.07(-37%)

For the circular sign detection, the ROC curves clearly show the improvement induced by the MRT algorithm since equivalent DRPFs are obtained with lower FPPF values (Fig. 9 (a)), especially when the DRPF is high ($> 80\%$). For the triangular sign detection, the reduction of FPPF is also large (about 40%) but with a lower DRPF (71%) than for circular signs (87%) as shown in Fig. 9 (b)). In this second case, the test highlights the sensitivity of the triangular detector to the minimum ROI size. Improved results can be obtained by considering ROIs larger than 30 square pixels.

Table VI shows the average computation time per frame in milliseconds, without code optimization, for the detector and the MRT in both sequences. The detection of triangular and circular signs requires an average of 40 ms to process a single frame. The MRT computation time depends on the number of detected (n) and tracked (m) ROIs but remains insignificant (less than 2 ms in the worst case). With $n = m = 4$, the computation time of the MRT is close to 0.70 ms, representing less than 2% of the computation time of the detection. Therefore, the proposed MRT provides good performance by reducing false positives while run time remains low.

TABLE VI
AVERAGE COMPUTATION TIMES

	Execution time (ms)
Detection (triangular and circular)	40
$MRT (n = 1, m = 1)$	0.25
$MRT (n = 2, m = 2)$	0.30
$MRT (n = 3, m = 3)$	0.56
$MRT (n = 4, m = 4)$	0.65
$MRT (n = 5, m = 5)$	1.56

VI. CONCLUSION

A Multi-ROI association and tracking algorithm based on spatio-temporal data fusion for vision-based traffic sign recognition has been presented. The idea is to reduce false positive detections by tracking sign candidates over time and processing the association task with the Transferable Belief Model. First, a detector extracts a set of ROI candidates which represents data to be combined in the fusion process. Then, the correlation task provides the associations with respect to the maximum of belief of each target-to-track and track-to-target pairing. Tracking is performed using multiple Kalman filters. Finally, the generated tracks are analyzed to detect false positives. The algorithm provides a set of ROIs, and on the other hand, it feeds the predicted sign locations back into the detector as *a priori* knowledge to influence *Detection* in subsequent frames. The experimental results show the effectiveness of this strategy in the reduction of the false positives by up to 45% with real-time performance.

It can be noted that the Multi-ROI tracker does not only apply to the ROI detector used in this paper. It can be applied to any traffic sign detector to reduce false positives.

This paper has focused on tracking traffic signs leading to a limited number of ROIs in frames. One extension

of this study will be to consider more dynamic situations in a dense traffic environment, such as pedestrian and dynamic object tracking.

ACKNOWLEDGMENT

The authors are grateful to the reviewers for their valuable comments, which have helped to improve the clarity and the quality of this article.

REFERENCES

- [1] A. Møgelmoose, M. M. Trivedi, and T. B. Moeslund, "Vision-based traffic sign detection and analysis for intelligent driver assistance systems: perspectives and survey," *IEEE Trans. Intell. Transp. Syst.*, vol. 13, pp. 1484–1497, Dec. 2012.
- [2] N. Barnes, A. Zelinsky, and L. Fletcher, "Real-time speed sign detection using the radial symmetry detector," *IEEE Trans. Intell. Transp. Syst.*, vol. 9, pp. 322–332, Jun. 2008.
- [3] M. A. García-Garrido, M. A. Sotelo, and E. Martín-Gorostiza, "Fast traffic sign detection and recognition under changing lighting conditions," in *Proc. IEEE ITSC*, 2006, pp. 811–816.
- [4] F. Zaklouta and B. Stanculescu, "Warning traffic sign recognition using a HOG-based K-d tree," in *Proc. IEEE IV Symp.*, 2011, pp. 1019–1024.
- [5] J. Greenhalgh, M. Mirmehdi, and S. Member, "Real-time detection and recognition of road traffic signs," *IEEE Trans. Intell. Transp. Syst.*, vol. 13, pp. 1498–1506, Dec. 2012.
- [6] Y. Bar-Shalom and X.-R. Li, "Multitarget-multisensor tracking: principles and techniques," *YBS Publishing*, 1995.
- [7] S. Blackman and R. Popoli, "Design and analysis of modern tracking system," *Artech House*, 1999.
- [8] A. Ruta, Y. Li, and X. Liu, "Real-time traffic sign recognition from video by class-specific discriminative features," *Pattern Recog.*, vol. 43, no. 1, pp. 416–430, Jan. 2010.
- [9] D. B. Reid, "An algorithm for tracking multiple targets," *IEEE Trans. Autom. Control*, vol. 24, pp. 843–854, Dec. 1979.
- [10] A. Dempster, "Upper and lower probabilities induced by a multivalued mapping," *The Ann. of Math. Stat.*, vol. 38, pp. 325–339, 1967.
- [11] G. Shafer, "A mathematical theory of evidence," *Princeton University Press*, 1976.
- [12] P. Smets and R. Kennes, "The transferable belief model," *Artif. Intell.*, vol. 66, no. 2, pp. 191–234, 1994.
- [13] B. Mourllion, D. Gruyer, C. Royère, and S. Théroutde, "Multi-hypotheses tracking algorithm based on the belief theory," in *Proc. IEEE Conf. Inf. Fusion*, vol. 2, 2005.
- [14] P. Smets, and B. Ristic "Kalman filter and joint tracking and classification based on belief functions in the TBM framework," *Inf. Fusion*, vol. 8, pp. 16–27, 2007.
- [15] B. Ristic, and P. Smets "The TBM global distance measure for the association of uncertain combat ID declarations," *Inf. Fusion*, pp. 276–284, 2006.
- [16] A. Ayoun and P. Smets, "Data association in multi-target detection using the transferable belief model," *Int. J. Intell. Syst.*, pp. 1167–1182, 2001.
- [17] J. Daniel and J.-P. Lauffenburger, "Multi-object association decision algorithms with belief functions," in *Proc. IEEE Conf. Inf. Fusion*, 2012, pp. 669–676.
- [18] M. Rombaut, "Decision in multi-obstacle matching process using the theory of belief," in *Proc. IEEE Conf. AVCS*, 1998, pp. 63–68.
- [19] C. Royère, D. Gruyer, and V. Cherfaoui, "Data association with belief theory," in *Proc. IEEE Conf. Inf. Fusion*, 2000.
- [20] J. Daniel and J.-P. Lauffenburger, "Fusing navigation and vision information with the transferable belief model: application to an intelligent speed limit assistant," *Inf. Fusion*, vol. 18, pp. 62–74, 2014.
- [21] M. Boumediene, C. Cudel, M. Basset, and A. Ouamri, "Triangular traffic signs detection based on RSLD algorithm," *Mach. Vis. Appl.*, vol. 24, no. 8, pp. 1721–1732, 2013.
- [22] R. E. Kalman, "A new approach to linear filtering and prediction problems," *J. Basic Eng.*, vol. 82, pp. 35–45, 1960.
- [23] M. García-Garrido, M. Ocana, D. Llorca, and M. A. Sotelo, "Robust traffic signs detection by means of vision and V2I communications," in *Proc. IEEE ITSC*, 2011, pp. 1003–1008.
- [24] C.-Y. Fang, S.-W. Chen, and C.-S. Fuh, "Road-sign detection and tracking," *IEEE Trans. Veh. Technol.*, vol. 52, pp. 1329–1341, 2003.
- [25] S. Šegvić, K. Brkić, Z. Kalafatić, and A. Pinz, "Exploiting temporal and spatial constraints in traffic sign detection from a moving vehicle," *Mach. Vis. Appl.*, pp. 1–17, 2011.
- [26] C. Harris and M. Stephens, "A combined corner and edge detector," in *Proc. AVC*, 1988, pp. 147–152.
- [27] P. Smets, "Analyzing the combination of conflicting belief functions," *Inf. Fusion*, vol. 8, pp. 387–412, 2007.
- [28] P. Smets, "Constructing the pignistic probability function in a context of uncertainty," *Uncertain. in Artif. Intell.*, vol. 5, pp. 29–39, 1990.
- [29] J.-P. Lauffenburger, J. Daniel, and O. Saif, "Multi-object association with belief functions: the dual decision algorithm," in *Proc. IFAC ACATTA Workshop*, 2013, pp. 193–198.
- [30] C. G. Cifuentes, M. Sturzel, F. Jurie, and G. Brostow, "Motion models that only work sometimes," in *Proc. Conf. BMV*, 2012, pp. 55.1–55.12.

- [31] T. Denœux, “A k-nearest neighbor classification rule based on dempster-shafer theory,” *IEEE Trans. on Syst., Man, and Cybern.*, vol. 25, pp. 804–813, 1995.
- [32] Y. Gu, T. Yendo, M. Panahpour Tehrani, T. Fujii, and M. Tanimoto, “Traffic sign detection in dual-focal active camera system,” in *Proc. IEEE IV Symp.*, 2011, pp. 1054–1059.
- [33] D. Deguchi, M. Shirasuna, K. Doman, I. Ide, and H. Murase, “Intelligent Traffic Sign Detector : Adaptive Learning Based on Online Gathering of Training Samples,” in *Proc. IEEE IV Symp.*, 2011, pp. 72–77.
- [34] M. Meuter, C. Nunn, S. M. Görmer, S. Müller-Schneiders, and A. Kummert, “A Decision Fusion and Reasoning Module for a Traffic Sign Recognition System,” *IEEE Trans. Intell. Transp. Syst.*, vol. 12, no. 4, pp. 1126–1134, 2011.



Mohammed Boumediene obtained an M.Eng. degree in computer science and an M.Sc. degree in image processing at the Université des Sciences et de la Technologie of Oran (USTOMB), Algeria, respectively in 2004 and 2006.

He is currently working on a Ph.D., with a focus on traffic sign recognition systems, in Laboratoire Signaux et Images of USTOMB. His research interests include computer vision, object detection, object association, and intelligent transportation systems.



Jean-Philippe Lauffenburger obtained an M.Sc. degree and a Ph.D. in electrical and control engineering at the Université de Haute Alsace (UHA), Mulhouse, France, respectively in 1998 and 2002.

Since 2004, he has been assistant professor at UHA. His major research interests are data fusion, belief functions, navigation and joint association and tracking for intelligent transportation systems.

Dr. Lauffenburger is a Member of the INTERNATIONAL FEDERATION OF AUTOMATIC CONTROL (IFAC) “Transportation Systems” TC7.4 and a Reviewer for the *Information Fusion Journal*. He is also a regular Associate Editor of IEEE and IFAC conferences.



Jérémie Daniel was born in Mulhouse, France, in 1985. He obtained an M.Sc. degree and a Ph.D. in control theory and signal processing at the Université de Haute Alsace, Mulhouse, France, respectively in 2007 and 2010.

Since then, he has been working as a research and algorithm development engineer. His research interests include data fusion and reference generation for the control of advanced driver assistance systems.

Dr. Daniel is a regular Reviewer of the IEEE TRANSACTIONS ON INTELLIGENT TRANSPORTATION SYSTEMS.



Christophe Cudel obtained a Ph.D. in automatic, signal and image processing at the Université de Reims Champagne-Ardenne, France, in 1995.

After a one-year post-doc in a computer vision company, he joined the Laboratoire MIPS, Université de Haute Alsace, Mul-

house, France.

Currently, he is associate professor, and his main research topics are in computer vision, and specifically in eye tracking, 3D vision and vision for driving assistance.



Abdelaziz Ouamri obtained an engineer degree in electrical engineering at ENSI(CAEN), an M.Sc. degree in automatic and signal processing at the Université Paris XI in 1979, a Ph.D. in engineering in 1981 and a “Doctorat d’Etat” in signal processing at the Université Paris XI in 1986, France.

He is currently Professor at the Université des Sciences et de la Technologie of Oran, Algeria. His research interests are focused on high resolution spectral array processing methods and detection and tracking of moving objects.

Dr. Ouamri received in 1990 the Senior Award from the IEEE Signal Processing Society in the spectrum estimation technical area.