



**HAL**  
open science

## Differential Expression of Metallothionein Isoforms in Terrestrial Snail Embryos Reflects Early Life Stage Adaptation to Metal Stress

Pierre-Emmanuel Baurand, Veronika Pedrini-Martha, Annette De Vaufleury, Michael Niederwanger, Nicolas Capelli, Renaud Scheifler, Reinhard Dallinger

► **To cite this version:**

Pierre-Emmanuel Baurand, Veronika Pedrini-Martha, Annette De Vaufleury, Michael Niederwanger, Nicolas Capelli, et al.. Differential Expression of Metallothionein Isoforms in Terrestrial Snail Embryos Reflects Early Life Stage Adaptation to Metal Stress. PLoS ONE, 2015, 10 (2), pp.14. 10.1371/journal.pone.0116004 . hal-01119921

**HAL Id: hal-01119921**

**<https://hal.science/hal-01119921v1>**

Submitted on 24 Feb 2015

**HAL** is a multi-disciplinary open access archive for the deposit and dissemination of scientific research documents, whether they are published or not. The documents may come from teaching and research institutions in France or abroad, or from public or private research centers.

L'archive ouverte pluridisciplinaire **HAL**, est destinée au dépôt et à la diffusion de documents scientifiques de niveau recherche, publiés ou non, émanant des établissements d'enseignement et de recherche français ou étrangers, des laboratoires publics ou privés.

RESEARCH ARTICLE

# Differential Expression of Metallothionein Isoforms in Terrestrial Snail Embryos Reflects Early Life Stage Adaptation to Metal Stress

Pierre-Emmanuel Baurand<sup>1</sup>, Veronika Pedrini-Martha<sup>2</sup>, Annette de Vaufleury<sup>1,3\*</sup>, Michael Niederwanger<sup>2</sup>, Nicolas Capelli<sup>1</sup>, Renaud Scheiffler<sup>1</sup>, Reinhard Dallinger<sup>2</sup>

**1** Chrono-Environnement, UMR 6249 University of Franche-Comté, 16 route de Gray, 25030, Besançon cedex, France, **2** Institute of Zoology, University of Innsbruck, Technikerstraße 25, A-6020, Innsbruck, Austria, **3** Department of Health Safety Environment, avenue des Rives du Lac, BP179, 70003, Vesoul cedex, France

\* [annette.devaufleury@univ-fcomte.fr](mailto:annette.devaufleury@univ-fcomte.fr)



**OPEN ACCESS**

**Citation:** Baurand P-E, Pedrini-Martha V, de Vaufleury A, Niederwanger M, Capelli N, Scheiffler R, et al. (2015) Differential Expression of Metallothionein Isoforms in Terrestrial Snail Embryos Reflects Early Life Stage Adaptation to Metal Stress. PLoS ONE 10 (2): e0116004. doi:10.1371/journal.pone.0116004

**Academic Editor:** Michael Schubert, Laboratoire de Biologie du Développement de Villefranche-sur-Mer, FRANCE

**Received:** June 1, 2014

**Accepted:** December 3, 2014

**Published:** February 23, 2015

**Copyright:** © 2015 Baurand et al. This is an open access article distributed under the terms of the [Creative Commons Attribution License](https://creativecommons.org/licenses/by/4.0/), which permits unrestricted use, distribution, and reproduction in any medium, provided the original author and source are credited.

**Data Availability Statement:** All relevant data are within the paper.

**Funding:** This work was supported by project No. P 23635-B20 granted by the Austrian Science Foundation to R. Dallinger and the Conseil Régional de Franche-Comté, the Ecole Doctorale Environnement-Santé and the University of Franche-Comté. The funders had no role in study design, data collection and analysis, decision to publish, or preparation of the manuscript.

## Abstract

The aim of this study was to analyze the expression of three metallothionein (MT) isoform genes (*CdMT*, *CuMT* and *Cd/CuMT*), already known from adults, in the Early Life Stage (ELS) of *Cantareus aspersus*. This was accomplished by detection of the *MT* isoform-specific transcription adopting Polymerase Chain Reaction (PCR) amplification and quantitative Real Time (qRT)-PCR of the three *MT* genes. Freshly laid eggs were kept for 24 hours under control conditions or exposed to three cadmium (Cd) solutions of increasing concentration (5, 10, and 15 mg Cd/L). The transcription of the three *MT* isoform genes was detected via PCR in 1, 6 and 12-day-old control or Cd-exposed embryos. Moreover, the transcription of this isoform genes during development was followed by qRT-PCR in 6 and 12-day-old embryos. Our results showed that the *CdMT* and *Cd/CuMT* genes, but not the *CuMT* gene, are expressed in embryos at the first day of development. The transcription of the 3 *MT* genes in control embryos increased with development time, suggesting that the capacities of metal regulation and detoxification may have gradually increased throughout embryogenesis. However in control embryos, the most highly expressed *MT* gene was that of the *Cd/CuMT* isoform, whose transcription levels greatly exceeded those of the other two *MT* genes. This contrasts with the minor significance of this gene in adult snails and suggests that in embryos, this isoform may play a comparatively more important role in metal physiology compared to adult individuals. This function in adult snails appears not to be related to Cd detoxification. Instead, snail embryos responded to Cd exposure by over-expression of the *CdMT* gene in a concentration-dependent manner, whereas the expression of the *Cd/CuMT* gene remained unaffected. Moreover, our study demonstrates the ability of snail embryos to respond very early to Cd exposure by up-regulation of the *CdMT* gene.

**Competing Interests:** The authors have declared that no competing interests exist.

## Introduction

Metallothioneins (MTs) constitute a superfamily of proteins that specifically bind to closed-shell metal ions ( $Zn^{2+}$ ,  $Cd^{2+}$ ,  $Cu^{+}$ ) via the sulfur atoms of their rich cysteine residues [1,2]. They are involved in metal-related tasks including metal ion detoxification and homeostasis [3–6], radical scavenging [7] and stress response [8]. Their specific physiological role may vary among animal species, the tissues in which they are expressed and the MT family to which they belong [9]. Terrestrial gastropods, for example, possess three MT isoforms, two of them with metal-selective features, performing metal-specific tasks [4]. Notably, one of these isoforms is cadmium (Cd)-selective and devoted to the detoxification of this harmful metal in digestive tissues [10]; the other is copper (Cu)-selective and involved in the regulation of Cu in connection with haemocyanin synthesis [11]. A third, non-specific MT isoform is expressed constitutively at only low basal levels and is hardly detected, if at all, in adult snails [12,13].

Terrestrial gastropods are particularly exposed to toxic metals in their habitat: not only do they move slowly and are in close contact with the soil substrate on which they thrive, but they also lay their eggs in the soil. Depending on meteorological and microclimatic conditions, the availability of trace elements to snails in the surrounding soil may fluctuate and change rapidly [14]. Perhaps as an adaptation to these alternating conditions, terrestrial gastropods are able to accumulate and detoxify certain toxic metals in their digestive tissues [10,15,16]. The non-essential Cd, in particular, is inactivated when bound to the expressed Cd-specific MT isoform [17,18]. The gene of this isoform is selectively up-regulated upon exposure to this metal, whereas the two other MT isoform genes do not respond to Cd or Cu exposure [13,19]. This Cd-specific response may confer to terrestrial heliids their relatively high tolerance for elevated environmental levels of this harmful metal.

The physiological and toxicological significance of the transcriptional regulation of the three MT isoform genes has recently been studied in adult garden snails, *Cantareus aspersus*, during a long-term metal exposure of 29 days [13]. It appears that the exclusive up-regulation of the CdMT isoform gene is in accordance with the relatively high Cd tolerance of this species, whereas the non-responsive transcription pattern of the two other MT genes indicates their comparatively low significance in the metabolic handling of Cd [13].

No data are available, however, on the presence and expression of the three MT isoforms in Early Life Stage (ELS) individuals (eggs, embryos) of *C. aspersus*. This may be important considering that in invertebrates, ELS may differ from adults in their sensitivity toward metal exposure [20,21]; the differential MT expression can play a crucial role in this concern [22]. Recent studies on *C. aspersus* embryos [23,24] reported a low sensitivity (based on hatching rate) of this species toward Cd with an  $EC_{50}$  of approximately 3.5 mg/L during continuous exposure over 20 days. Furthermore, very high Cd concentrations (up to 8 mg/L) are required to completely inhibit the hatching process. Baurand et al. [25] have shown genotoxic effects of Cd on *C. aspersus* embryos at exposure concentrations of 2 mg/L and a fragmentation of genomic DNA after 20 days of exposure to 6 mg/L Cd. The same Cd concentration disrupted the development of embryos by causing a decrease in cardiac rhythm and growth, and hatching delays [26]. Thus, overall, ELS individuals of *C. aspersus* exhibit a relatively high tolerance towards Cd exposure. However, little is known about the underlying mechanisms, particularly with respect to the expression of the three MT isoform genes and their potential role during Cd exposure.

Therefore, the aim of this study was to analyze the transcription of the three MT isoform genes in ELS of *C. aspersus* and to quantify their potential gene up-regulation due to Cd exposure by comparing Polymerase Chain Reaction (PCR) and quantitative Real Time PCR (qRT-PCR).

## Materials and Methods

### Exposure concentrations

Cd solutions were prepared by dissolving solid CdCl<sub>2</sub> (99.99%, Sigma Chemical Co., St. Louis, MO; C-2544) in demineralized water (pH 6.2), which was also used as a control solution. The concentrations of Cd in solutions were measured by means of inductively coupled plasma atomic emission spectroscopy (ICP-AES) (ICAP 6000 series model radial, Thermo scientific, France). The quality of the results was verified using reference water (Hard Drink Water, ERM- CAO11a, Molsheim, France) that was Cd-certified at 4.94 µg/L (+/- 0.23 µg/L, average recovery of 93%). The nominal concentrations of exposure solutions were 5, 10 and 15 mg Cd/L, whilst actual concentrations were 3.8, 8.7, and 13.1 mg Cd/L, respectively.

### Exposure design and Cd treatment

Eggs were obtained from standardized laboratory rearing at the laboratory of Chrono-Environnement (University of Franche-Comté, Besançon, France) and were exposed using the liquid phase bioassay as previously described [23,24]. Briefly, clutches were separated into groups of 10 eggs each and placed into Petri dishes on four layers of paper (Quantitative filter paper grade 1 ashless, Whatman) dampened with 0.8 mL of demineralized water (control treatment) or one of the three Cd solutions, respectively. The exposure started after the end of egg laying (indicated by “day 0”) for a duration of 24 hours (until day 1, Fig. 1). After this period of exposure, eggs were transferred to metal-free conditions (demineralized water) for the rest of the embryonic development.

Three sampling dates were considered: day 1, corresponding to the end of exposure (control or one of the three Cd concentrations), and defining the beginning of the embryonic development; day 6, marking the start of organogenesis; and day 12, delimiting its completion (see states of development in Fig. 1A).

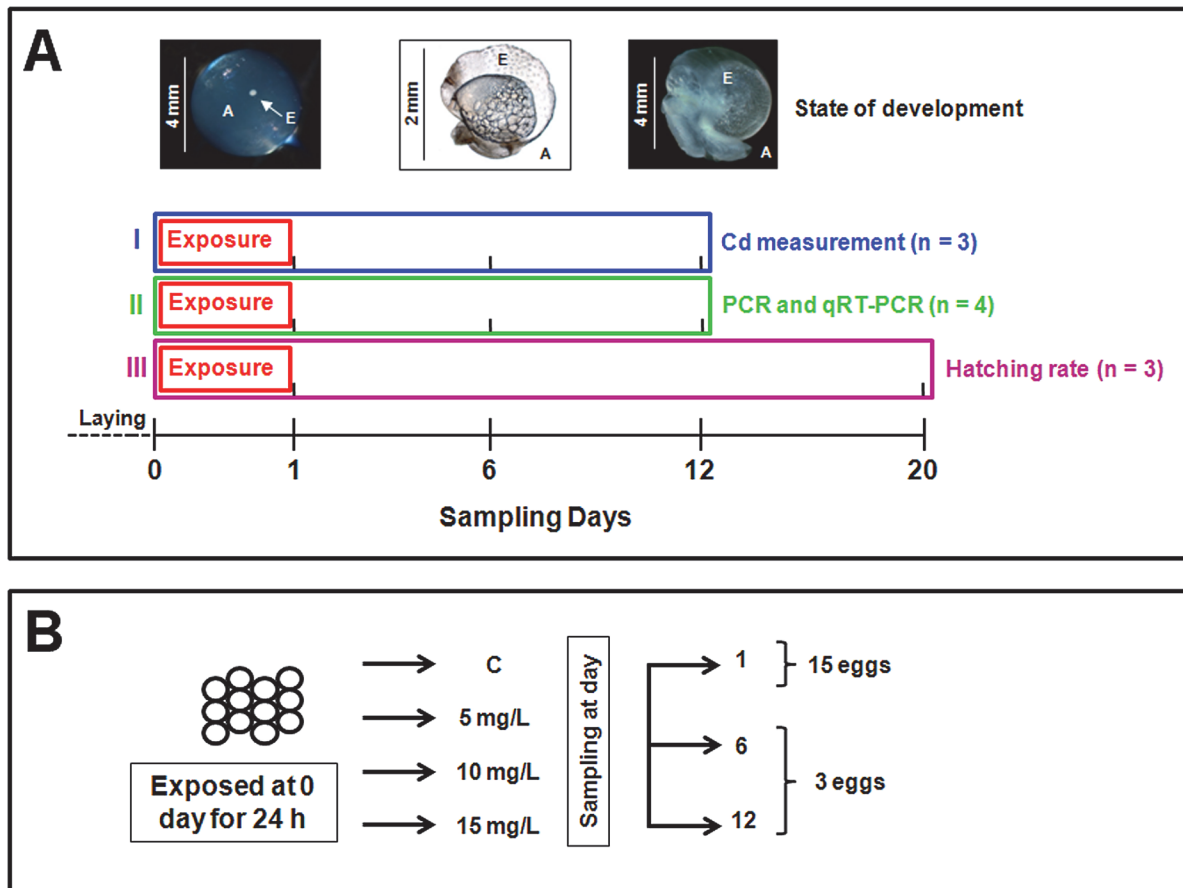
Three exposure regimes were carried out (Fig. 1A), in which a total number of ten different clutches were consumed. Three of them were used for Cd measurement in eggs (regime I). Four other clutches were applied for PCR and qRT-PCR analyses (regime II). The last three clutches were used for hatching success determination (regime III). Eggs of a same clutch were tested exclusively in one of the three exposure regimes, but proportionally subjected to one of the four treatments (control and three Cd concentrations) within the same exposure regime.

### Exposure regime I and sample processing for Cd analysis

In the exposure regime I, three separate clutches were used for the determination of Cd concentrations in the entire egg (consisting of eggshell, albumen and embryo) (Fig. 1A).

At four sampling dates (days 0, 1, 6 and 12) five eggs (approximately 30 mg dry mass) were pooled from each of the four exposure treatments (Fig. 1A and 1B). Day 0 was considered as the first sampling point in order to assess Cd levels in freshly laid eggs prior to exposure.

Pooled samples were oven-dried (50°C) and subsequently digested in 300 µL of nitric acid (HNO<sub>3</sub>, 67–69%, quality Optima for ultra trace analysis, Fisher Scientific) for 40 h at 60°C. After digestion, ultrapure water was added to a final volume of 15 mL. Cd concentrations in the samples were measured using ICP-MS (X series II, Thermo scientific, France). The reliability of the measurement procedure was assessed by applying different types of certified standard reference materials such as dogfish liver (DOLT) and lobster hepatopancreas (TORT) (both: NRCC-CNRL, Canada).



**Fig 1. Scheme of exposure and sampling conditions during embryonic development of control and Cd-exposed eggs of *Cantareus aspersus* applied to the present study.** (A) Illustration of developmental stages of snail eggs with specification of the albumen (A) and the embryo (E) (above), followed by details of exposure regimes and sampling dates applied for (I) the assessment of Cd concentrations in snail embryos, (II) RT and qRT-PCR detection of embryonic *MT* isoform genes, and (III) evaluation of successful hatching rates during development along the time axis (below), starting immediately after egg laying. n is the number of clutches used for each exposure regime. (B) Exposure scheme of eggs from each clutch (left-hand) treated with control solution (C) or with increasing nominal concentrations (5, 10 and 15 mg/L) of Cd; also shown are the numbers of eggs pooled (right-hand) to one sample at each of the days selected during the development.

doi:10.1371/journal.pone.0116004.g001

## Exposure regime II and sample preparation for PCR and qRT-PCR

Exposure regime II was carried out in order to detect the transcription of the *MT* isoform genes through embryonic development by applying PCR and qRT-PCR on eggs from four clutches (Fig. 1B).

For PCR of the three *MT* isoform gene transcripts, snail egg samples were used at day 1 (control, and 5, 10, 15 mg/L Cd-exposed), day 6 (control and 5mg/L Cd exposed) and day 12 (control only), (Fig. 1). Since 1-day-old embryos were very small (diameter < 500  $\mu$ M), 15 of them were pooled for each of the exposure treatments applied. Three embryos were pooled to one sample for 6 and 12-day-old individuals (Fig. 1B).

The small amount of tissue of 1 day-old embryos did not permit to apply qRT-PCR to these samples. Consequently, only eggs from the two successive sampling dates (6 and 12 days) were used for the quantitative approach. At these two dates, three embryos from each treatment control and Cd-exposed eggs were separated from albumen (Fig. 1B) and processed for RNA isolation as described below. Pooled samples were soaked in RNAlater (Applied Biosystems, Foster City, CA, USA) and stored at -80°C. RNA isolation was performed using the RNeasy Plus

Micro Kit and the RNeasy Mini Kit (Qiagen, Hilden, Germany) according to the manufacturer's instructions. The Quant-iT RiboGreen RNA Assay Kit (Invitrogen, Karlsruhe, Germany) was used for RNA quantification after DNase I (Fermentas, St. Leon-Rot, Germany) digestion. 250 ng of RNA were applied in a 50  $\mu$ L approach for cDNA synthesis using the RevertAid H Minus M-MLV Reverse Transcriptase kit (Fermentas).

## PCR and qRT-PCR of the three MT isoforms

The presence of *MT* isoform gene transcripts was investigated by means of PCR in 1 day, 6 day and 12-day-old embryos. The isoform gene-specific primers were designed for *C. aspersus*, and the amplified fragments sequenced according to Höckner et al. [13]. The primers were applied as follows: for CdMT sense, 5'-GCC GCC TGT AAG ACT TGC A-3' and antisense, 5'-CAC GCC TTG CCA CAC TTG-3'; for CuMT: sense, 5'-AAC AGC AAC CCT TGC AAC TGT-3' and antisense: 5'-CGA GCA CTG CAT TGA TCA CAA-3'; for Cd/CuMT: sense, 5'-TGT GGA GCC GGC TGT TCT-3' and antisense: 5'-CAG GTG TCA TTG TTG CAT TGG-3'. Amplifications of the three different *MT* isoforms were performed with 1  $\mu$ L (for 6 and 12 day samples) or 2  $\mu$ L (for 1 day samples) of cDNA template, 0.5  $\mu$ L of gene-specific sense and antisense primer (10  $\mu$ M), 0.5  $\mu$ L of dNTPs (10 mM) and 2.5  $\mu$ L of 10X Taq Buffer, using 0.5  $\mu$ L of Titanium Taq DNA Polymerase (Clontech) to a final volume of 25  $\mu$ L. The cycling parameters were as follows: one initial denaturation step of 2 min at 95°C followed by 30 (or 35 for 1 day) cycles at 95°C for 20 s, 54.3 (*Cd/CuMT*), 57.2 (*CdMT*) or 58.5°C (*CuMT*) for 25 s, 68°C for 30 s and a final extension of 10 min at 70°C. Amplification products were visualized on 3% agarose gels stained with GelRe (Biotum, Hayward, CA, USA) after an electrophoresis conducted at 110 V for 45 min. The amplicon lengths of the single *MT* isoform gene transcripts were 56 bp (*CdMT*), 74 bp (*CuMT*) and 59 bp (*Cd/CuMT*), respectively.

qRT-PCR was carried out according to the protocol reported by Höckner et al. [13]. Briefly, 2  $\mu$ L of sample cDNA were added to 2  $\mu$ L of BSA 10X (Sigma-Aldrich, USA), 2  $\mu$ L of sense primer, 2  $\mu$ L of antisense primer, 2  $\mu$ L of ultrapure water and 10  $\mu$ L of Power SYBRGreen (Applied Biosystems, Foster City, CA, USA) for a final volume of 20  $\mu$ L. The following primer concentrations were used: CdMT sense, 300 nM; CdMT antisense, 900 nM; CuMT sense, 900 nM; CuMT antisense, 900 nM and Cd/CuMT sense, 900 nM; CdCu/MT antisense, 300 nM. The analyses were performed using a 7500 Real Time PCR analyzer (Applied Biosystems). For each cDNA sample, qRT-PCR measurements were performed in triplicates. The efficiency of qRT-PCR reactions was between 95 and 99%. The relation between resulting Ct values and the log of copy numbers of each gene were for *CdMT*,  $Ct = -3.4466 \log \text{copy} + 34.987$ ; for *CuMT*,  $Ct = -3.3178 \log \text{copy} + 34.483$ ; and for *Cd/CuMT*,  $Ct = -3.3385 \log \text{copy} + 32.873$ .

The obtained values expressed in copy numbers were normalized using total RNA in samples and were given in copy numbers / 10 ng of total RNA.

## Exposure regime III and determination of hatching success

In exposure regime III, the three egg clutches were used for determination of Cd toxicity parameters (Fig. 1A). Each clutch was separated into four groups corresponding to one of the four treatments: control (demineralized water) and three Cd concentrations (Fig. 1B). After 24 hours, eggs were placed on filter paper with demineralized water for the remainder of the developmental period. Twenty days after the beginning of the experiment, the average hatching success for each concentration was calculated (Fig. 1A). The results were considered valid if the hatching success of controls was at least 70% of the average value normally observed for controls under laboratory rearing conditions.



## Statistics

All statistical analyses were performed with the R software (R Development Core Team, 2004, <http://www.R-project.org/>; version 2.13.2). The homogeneity and normality of data were tested using the Bartlett test and the Kolmogorov-Smirnov test, respectively. Since the data were not normally distributed, non-parametric tests were used for all statistical analyses. The Mann-Whitney *U* test was used to compare i) Cd accumulation in eggs for each solution (i.e., control versus 5 mg/L, 5 mg/L versus 10 mg/L, etc.) and ii) qRT-PCR results in control and Cd-exposed samples at 6 and 12 days. Kruskal-Wallis test was used to compare i) levels of Cd measured in eggs at each date for the same concentration of exposure (i.e., at 1, 6 and 12 days for 5 mg/L exposure), and ii) differences between the 3 *MT* gene transcript values of controls (comparisons of *CdMT*, *CuMT* and *Cd/CuMT* values at 6 and 12 days in control). In all cases, statistical significance was set at  $p < 0.05$ . The dose-dependent curves and the  $EC_{10}$  and  $EC_{50}$  values were determined with the Hill's model using the macro application Regtox free version EV6.1 in Excel.

## Results

### Cd concentration in eggs

Cd concentrations in eggs increased significantly in a dose-dependent manner (Cd in 15 mg/L-exposed eggs > 10 mg/L > 5 mg/L) (Table 1): Cd accumulation in eggs exposed to 15 mg/L were significantly higher than those exposed to 10 mg/L ( $W = 78, p < 0.001$ ) or 5 mg/L ( $W = 0, p < 0.001$ ). Cd concentrations in eggs exposed to 10 mg/L were higher than those exposed to 5 mg/L ( $W = 81, p < 0.001$ ). No significant change of Cd concentrations was found in embryos through development time (from day 1 to 12) for any of the Cd concentrations applied: instead, Cd concentrations remained near 12.5 µg/g DW ( $KW = 0.71, df = 3, p = 0.87$ ), 23 µg/g DW ( $KW = 0.62, df = 2, p = 0.73$ ), and 40 µg/g DW ( $KW = 3.84, df = 3, p = 0.28$ ) for eggs exposed to 5, 10 and 15 mg Cd/L, respectively (Table 1).

### Hatching success of snail eggs

The  $EC_{10}$  and  $EC_{50}$  values based on hatching success were 2.68 and 5.05 mg Cd/L, with confidence intervals (CI) of 95% from 2.05 to 3.32 and 4.41 to 5.79, respectively.

### Expression of the three *MT* isoform genes

Due to the low quantity of RNA available from pools of 15 one-day-old embryos, the four pools per treatment were merged to obtain one major pool of 60 embryos for each of the four

**Table 1. Cadmium concentrations (mean and standard deviations in brackets) in eggs of *Cantareus aspersus* recorded throughout the duration of the experiment (0–12 days).**

Days of measurement		0	1	6	12
	Ctrl	0.01 <sup>a</sup> (+/- 0.01)	0.08 <sup>a</sup> (+/- 0.13)	0.11 <sup>a</sup> (+/- 0.13)	0.01 <sup>a</sup> (+/- 0.01)
Cd concentration (µg/g dry weight)	5mg/L	—	14.18 <sup>b</sup> (+/- 3.70)	12.67 <sup>b</sup> (+/- 1.32)	13.25 <sup>b</sup> (+/- 1.36)
	10mg/L	—	23.17 <sup>c</sup> (+/- 3.69)	23.32 <sup>c</sup> (+/- 3.57)	23.29 <sup>c</sup> (+/- 4.99)
	15mg/L	—	37.99 <sup>d</sup> (+/- 11.73)	37.04 <sup>d</sup> (+/- 6.86)	35.63 <sup>d</sup> (+/- 4.97)

For each point of measurement, pooled samples from three replicate exposures were considered ( $n = 3$ ), showing means and standard deviations (in brackets). Significant differences of values between single treatments and times were expressed by different superscript lower case letters (a, b, c, d) (Mann-Whitney *U* test,  $p < 0.001$ ).

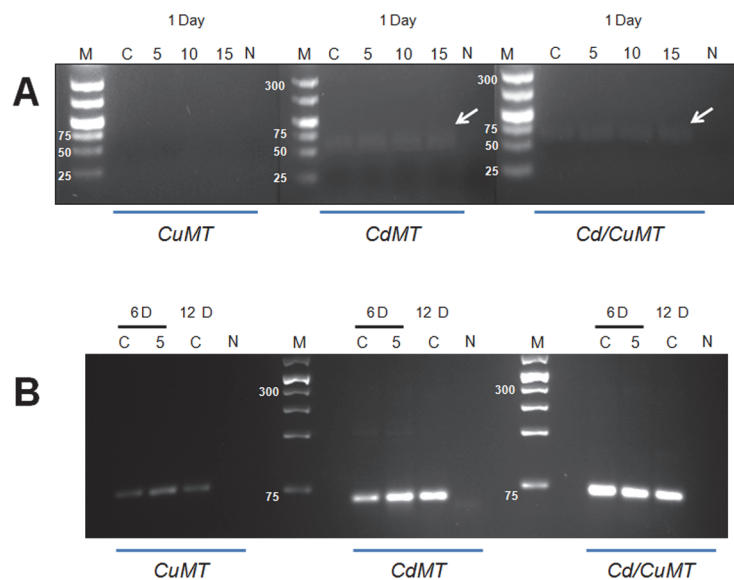
doi:10.1371/journal.pone.0116004.t001

exposure concentrations. Hence, the PCR on one-day-old samples was performed on these 4 major pools of 60 embryos each. Yet, the small amount of tissue in these major pools did not permit to apply qRT-PCR.

Consequently, the expression of the *CdMT* and *Cd/CuMT* genes, but not that of the *CuMT* gene, could be detected in 1-day-old embryos (exposed or not) by PCR (Fig. 2A). Only at the age of 6 days and thereafter were the three *MT* isoform genes altogether expressed in snail embryos (Fig. 2B). However, the intensity of PCR bands for the *CuMT* gene remained the lowest one in 6 and 12-day-old control samples compared to the bands for the other two *MT* genes. In contrast, the PCR band with the highest intensity throughout appeared to be that of the *Cd/CuMT* gene (Fig. 2B).

As shown by qRT-PCR, constitutive transcription levels of all three *MT* isoform genes increased with development time (6 and 12 days) in unexposed snail embryos ( $W = 0, p < 0.05$ , between days 6 and 12) (Fig. 3). Over all two dates investigated (6 and 12 days), the transcription values of the *Cd/CuMT* gene was significantly higher than those of the other two *MT* genes ( $KW = 8.87; 7, df = 2, p = 0.01; 0.03$  at 6 and 12 days, respectively) (Fig. 3).

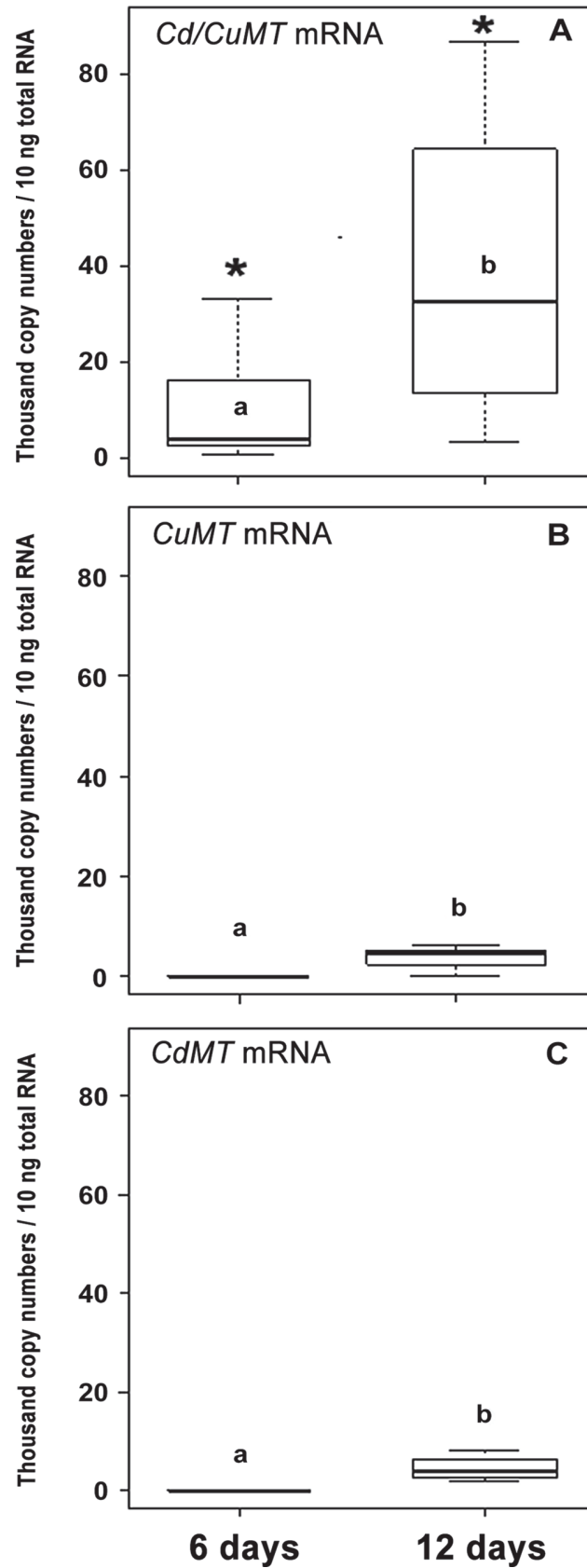
In 6-day-old embryos exposed to Cd, a significant induction ( $W = 0, p = 0.02$  for each concentration) of transcription levels was detected for *CdMT* mRNA, in contrast to the non-significant responses of the *CuMT* ( $p > 0.11$ ) and the *Cd/CuMT* genes ( $p > 0.69$ ) (Fig. 4). This Cd-specific transcriptional induction of the *CdMT* gene was also observed in 12-day-old embryos (Fig. 5) exposed to 5 and 10 mg Cd/L ( $W = 2, p = 0.05; W = 0, p = 0.01$ , respectively). In contrast to the *CdMT* gene, the transcription rates of the *CuMT* and *Cd/CuMT* gene in 12-day-old embryos were not significantly induced by Cd at all ( $p > 0.40$  and  $p > 0.34$ ) (Fig. 5).



**Fig 2. Visualization of PCR amplification bands specific for the three *MT* isoform genes (*CuMT*, *CdMT* and *Cd/CuMT*) of *Cantareus aspersus* control and Cd-exposed embryos.** (A) Detection of *MT* isoform gene amplification bands in 1-day-old control eggs (C) and embryos exposed for one day to increasing Cd concentrations (5, 10, and 15 mg/L) (5, 10, 15), along with DNA ladder bands (M) (Generuler Low range DNA ladder and 100pb plus DNA ladder, Thermo Scientific) on 3% agarose gel. N, negative control without sample DNA. (B) Detection of *MT* isoform gene amplification bands in 6-day-old control (C) embryos and embryos exposed to 5 mg Cd/L (5), or in 12-day-old embryos (C, controls only), along with DNA ladder bands (M) (Generuler Low range DNA ladder and 100pb plus DNA ladder, Thermo Scientific) on 3% agarose gel. N, negative control without sample DNA.

doi:10.1371/journal.pone.0116004.g002





**Fig 3. MT isoform mRNA transcription values (thousand mRNA copy numbers/10 ng of total RNA) for the Cd/CuMT (A), CuMT (B) and CdMT (C) genes of *Cantareus aspersus* (n = 4) in control (unexposed) eggs through embryonic development (6 and 12 days).** Box plots indicate the median values (bold line) for each group, the edges of the boxes are the 25<sup>th</sup> and 75<sup>th</sup> percentiles. The whiskers represent the 10<sup>th</sup> and 90<sup>th</sup> percentiles (\*). Significant differences (Kruskal-Wallis test, p < 0.03) between Cd/CuMT, CdMT and CuMT values at 6 and 12 days. Differing lower case letters (a, b) indicate significant differences between single values for each of the three MT isoform genes at days 6 and 12 (Mann-Whitney U test, p < 0.02).

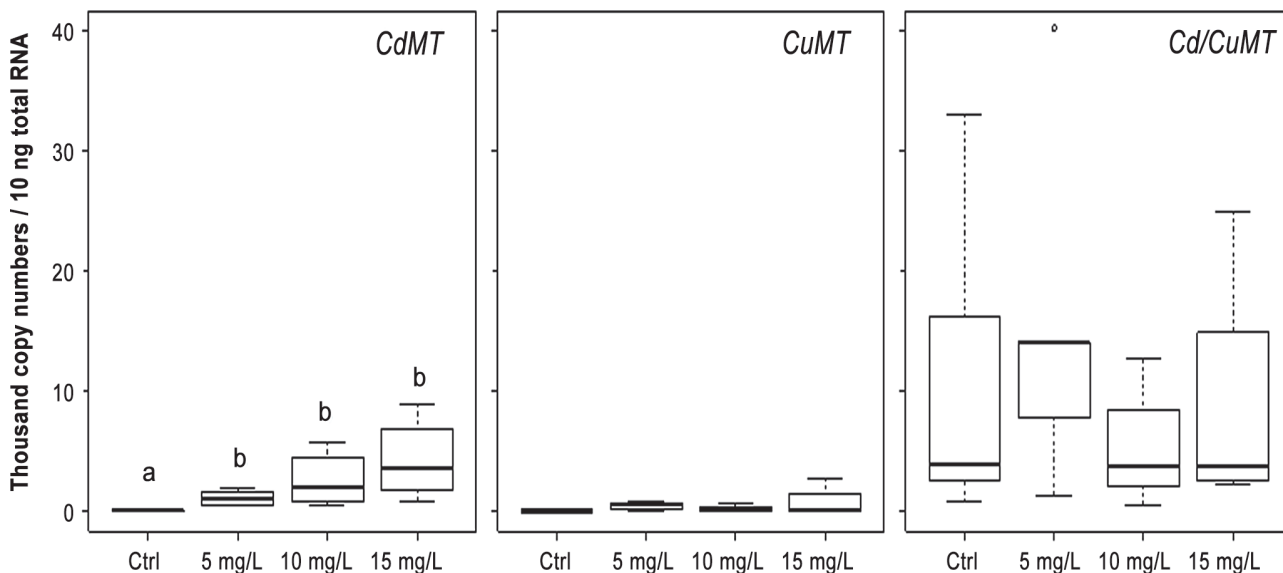
doi:10.1371/journal.pone.0116004.g003

## Discussion

### Expression pattern of MT isoform genes in unexposed embryos

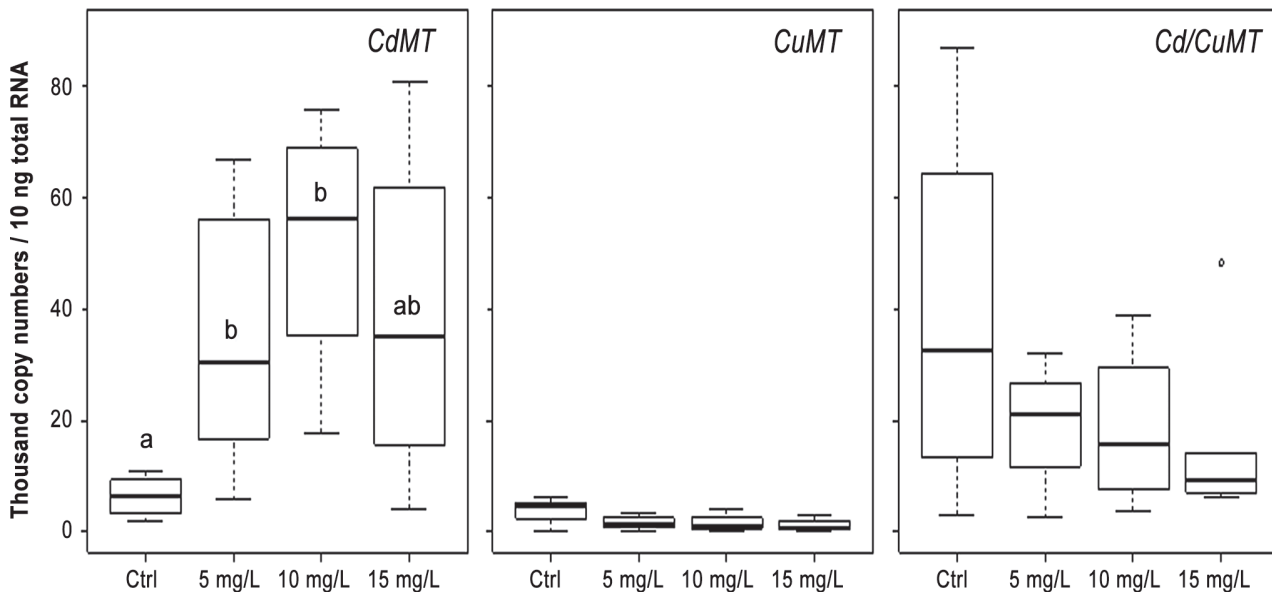
In the present study, data on the expression pattern of the CdMT, CuMT and Cd/CuMT isoform genes in the ELS of the terrestrial snail *Cantareus aspersus* are shown for the first time. It appears that snail embryos are able to transcribe the CdMT and Cd/CuMT genes from the first 24 hours of their development, corresponding to the beginning of the morula stage [23]. At the same time of development, no indication for an early expression of the CuMT gene was observed (Fig. 2A, B). Our results are partially in accordance with studies by Russo et al. [27,28] in the sea urchin *Paracentrotus lividus*, where a low expression rate of MT mRNA in eggs or embryos at the eight cells and morula stages was reported. On the other hand, the absence of CuMT gene expression in *C. aspersus* morula embryos indicates that at this early stage of development the cell-specific homeostatic regulation of Cu which is linked to the expression of CuMT in mollusk rhogocytes [11] may not be differentiated yet. Only from day 6 of embryonic development could the expression of the three snail MT isoform genes (CdMT, CuMT and Cd/CuMT) be observed altogether (Fig. 3), indicating that from this point of development, the metal regulation and detoxification capacities in *C. aspersus* embryos may be fully unfolded.

In fact, the stepwise increase of transcription levels of the three MT isoform genes from 6 to 12 days of development may be related to gradual tissue differentiation within this time



**Fig 4. MT isoform mRNA transcription values (thousand mRNA copy numbers/10 ng of total RNA) of the CdMT, Cd/CuMT and CuMT genes in 6-day-old embryos of *Cantareus aspersus* (n = 4) exposed to increasing Cd concentrations (C, control; 5 mg/L, 10 mg/L and 15 mg/L).** Box plots indicate the median values (bold line) for each group, the edges of the boxes are the 25<sup>th</sup> and 75<sup>th</sup> percentiles. The whiskers represent the 10<sup>th</sup> and 90<sup>th</sup> percentiles. The white dot is the extreme value. Significant differences (Mann-Whitney U test, p < 0.005) of transcription levels for the three MT isoform genes between control and exposed embryos are indicated by differing lower case letters (a, b).

doi:10.1371/journal.pone.0116004.g004



**Fig 5. MT isoform mRNA transcription values (thousand mRNA copy numbers/10 ng of total RNA) of the CdMT, Cd/CuMT and CuMT genes in 12-day-old embryos of *Cantareus aspersus* (n = 4) exposed to increasing Cd concentrations (C, control; 5 mg/L, 10 mg/L and 15 mg/L).** Box plots indicate the median values (bold line) for each group, the edges of the boxes are the 25<sup>th</sup> and 75<sup>th</sup> percentiles. The whiskers represent the 10<sup>th</sup> and 90<sup>th</sup> percentiles. The white dot is the extreme values. Significant differences (Mann-Whitney U test,  $p < 0.05$ ) of transcription levels of the three MT isoform genes are indicated by differing lower case letters (a, b).

doi:10.1371/journal.pone.0116004.g005

(Fig. 3). Six-day-old snail embryos start their organogenesis by development of a primary foot, mouth, and anus, whereas after 12 days, embryos assume the appearance of small adult snails with the presence of all distinct parts of the body (shell, eyes, mantle, digestive glands, etc.) [23]. In our experiments, twelve-day-old embryos were clearly more efficient in the expression of the three MT genes compared to earlier developmental stages (Fig. 3). Russo et al. [28] attributed high levels of gene expression at the onset of the gastrulation stage of the sea urchin *P. lividus* to an increased requirement of MT mRNA due to the organization of new tissue territories. In *C. aspersus*, the gradual rise of MT isoform gene transcription over time of development of unexposed embryos proves the significance of constitutive MT gene expression, suggesting an important role of the three MT isoforms during the snail embryogenesis. For the very first stages of sea urchin embryogenesis, Russo et al. [28] suggested a possible role of maternal MT mRNA supplies during oogenesis, giving rise to the early ability of MT expression in sea urchin embryos. Such a maternal MT mRNA stock might be used by the embryos for the purpose of metal homeostasis during early development when a high level of essential metals is needed to cope with the requirements of rapid DNA synthesis and metabolic activity. In eggs of the marine mollusk *Crassostrea virginica*, Roesijadi et al. [29] have also observed the presence of maternal MT mRNA, which declines immediately after fertilization. In the case of *C. aspersus* embryogenesis too, a role of maternal MT mRNA during early development cannot be excluded, although the absence of CuMT mRNA transcription in one-day-old embryos does not support this hypothesis. Rather, the gradual increase of MT gene expression from six to twelve-day-old embryos can most likely be attributed to the rising ability of developing snails to transcribe the three MT genes constitutively by their own (Fig. 3). This suggests that the physiological capacity of metal regulation and detoxification may gradually increase throughout the snail embryogenesis, as similarly reported by Lemoine et al. [30] for the marine mollusk *Mytilus edulis*.

Overall, we believe that the high standard deviations of values obtained in our qRT-PCR measurements (Fig. 3) may reflect the high biological variability of individual embryos and/or

pooled embryo samples due to the fact that they refer to the whole body of very small-sized developing organisms. In this concern, we would like to remind that similarly high variabilities of copy numbers of *MT* isoform genes from terrestrial snails were normally also encountered for adult in our previous measurements [10, 13, 19].

In unexposed embryos of *C. aspersus*, the highest transcription rate among all three *MT* isoform mRNAs was that of the *Cd/CuMT* gene. This is interesting, since in adult snails, this same *MT* isoform gene is normally expressed at a much lower rate [13]. This suggests the marginal importance of this isoform gene in metal balance of adult snails, contrasting with its apparently more prominent physiological importance in developing snail embryos, perhaps in accordance with their increased metal homeostatic and metabolic requirements during development. Russo et al. [28] suggested such a homeostatic role for MTs in sea urchin embryos too.

The involvement of *MT* genes and proteins during development has also been suggested for several vertebrate species. Olsson et al. [31], for example, have suggested an important role of *MT* genes during development and differentiation in the ELS of rainbow trout (*Salmo gairdneri*). Moreover, a significant function has also been attributed to MTs in the embryonic brains of the amphibian *Xenopus laevis* [32] and the lizard *Podarcis sicula* [33]. The increase of *MT* mRNA in lizard embryos at hatching was attributed to the fact that at this point the developing organism switches from a closed system to an open system physiology owing to the loss of eggshell protection.

### Up-regulation of *MT* genes in cd-exposed embryos

The present study shows that during exposure of snail embryos to Cd over 24 hours, the metal is taken up from the exposure solution by the entire egg (shell, albumen and embryos). In fact, Cd concentrations in eggs of *Cantareus aspersus* after this short-term exposure remained elevated and stable throughout the 12 days of the experiment (Table 1). On the other hand, Cd concentrations in eggs of the present study revealed a dose-dependent metal uptake (Table 1). Cd concentrations measured in one-day-old eggs most likely represent the metal load present in the eggshell. According to the distribution of Cd in eggshell and albumen after 7 days of exposure reported by Druart et al. [23], in 6 and 12-day-old eggs, however, Cd concentrations analyzed may possibly reveal the metal content of the albumen. This may be due to the time required by Cd to diffuse throughout the different parts of the egg, thereby exerting toxic effects on snail embryos. The significant up-regulation of the *CdMT* gene transcription at 6 days of development provides evidence, in any case, that the Cd has by this time reached the embryonic tissue, which responds to the metal insult by *CdMT* gene expression.

Overall, this study provides the first data on the expression and up-regulation of *MT* genes in the ELS of a terrestrial snail (*C. aspersus*) exposed to Cd (Figs. 4 and 5). In spite of the high standard deviations of qRT-PCR values obtained (see above), a dose-dependent up-regulation of the *CdMT* gene was found, in both, six-day-old and 12-day-old exposed embryos. The only exception was seen in 12-day-old embryos at the highest Cd exposure concentration, where the *CdMT* mRNA transcription level did not increase any more compared to lower exposure concentrations (Fig. 5). A rapid induction of *MT* expression was also reported by Roesijadi et al. [29] for Cd-exposed embryos of *C. virginica*. However, the *MT* gene induction in oyster eggs occurred at a faster rate compared to that observed in the snail eggs of the present study, likely because oyster eggs were directly exposed to the metal through the contaminated seawater and thus experienced a faster Cd transfer into the embryonic cells.

Whereas Roesijadi et al. [34] have associated the increased *MT* gene expression of *C. virginica* in response to Cd exposure with the ability of this species to protect itself from metal toxicity, Meistertzheim et al. [35] have hypothesized that in the Pacific oyster (*C. gigas*), high *MT*

levels may enable embryos of this species to survive in stressful environments. In many species, however, exposure to toxic metals directly leads to an increase of *MT* gene transcription [30]. In the present study too, the increase in transcription rates of the Cd-specific *MT* isoform gene upon exposure to this metal demonstrates the ability of premature (6-day-old) snail embryos to immediately respond to the Cd stress by synthesizing a metal-specific *MT* isoform able to inactivate the metal by detoxification. The fact that in 12-day-old embryos exposed to the highest Cd concentration (15 mg/L) the mRNA copy numbers of the *CdMT* gene did not exceed the respective transcription rates observed at lower exposure concentrations (5 and 10 mg Cd/L) (see Fig. 5) perhaps indicates that at this highest exposure concentration, Cd may start to exert toxic effects which cannot be compensated any more by *CdMT* expression. Indeed, our results show that at an exposure concentration of 15 mg Cd/L, the hatching success (at 20 days) of snail embryos is completely inhibited. Therefore, our interpretation is that at this high Cd concentration, embryos lost their ability to further up-regulate the Cd-specific *MT* gene and hence, their defense capacities became overloaded. Chabicowski et al. [36] have shown that in adult Roman snails (*Helix pomatia*) exposed to increasing Cd concentrations *CdMT* overloading is accompanied with an increase of individual mortality. Interestingly, Roesijadi et al. [37] also observed, in a similar manner as in the present study, a decrease of *MT* mRNA inducibility in hemocytes of *C. virginica* exposed to Cd *in vitro* above a threshold concentration of 35  $\mu$ M.

In the present study, the expression pattern of the three *MT* isoform genes in Cd-exposed embryos of *C. aspersus* is similar to that reported earlier by Höckner et al. (2011) [13] for adult snails. In both cases, Cd-specific induction was only seen for the *CdMT* gene, whereas no metal-responsive increase of transcription rates was observed for the *CuMT* and the *Cd/CuMT* genes (see Figs. 4 and 5). Whilst the lacking inducibility of the *CuMT* gene by Cd exposure may be understandable because of its exclusive Cu specificity [19], the inability of the *Cd/CuMT* gene to respond at the transcriptional level to Cd stress is more surprising. In fact, the expressed *Cd/CuMT* isoform is able to bind both  $\text{Cd}^{2+}$  and  $\text{Cu}^+$  ions simultaneously upon metal exposure [12]. Hence, it has to be assumed that in spite of the lacking metal-dependent inducibility of this gene, its constitutive expression in snail embryos may be sufficient to make it available as a  $\text{Cu}^+$  and  $\text{Cd}^{2+}$  binding ligand for purposes of metal regulation and detoxification, respectively. At least, our data suggest that this *MT* isoform gene must play, due to its elevated transcription rate, a so far unknown, but perhaps important role in snail embryogenesis.

## Conclusions

The present study reveals the early capacity of developing embryos of the terrestrial snail *Cantareus aspersus* to: (i) constitutively express the three characteristic *MT* isoform genes (*CuMT*, *CdMT* and *Cd/CuMT*) with (ii) a higher transcription level for the unspecific *Cd/CuMT* gene compared to that known from adult snails; and (iii) a Cd-specific response of the *CdMT* gene by increased transcription rates upon metal exposure during embryogenesis. Because of this, the ELS of *C. aspersus* may be used in ecotoxicological studies, e.g. by quantification of the *CdMT* gene expression as a biomarker of Cd exposure. As to the high constitutive expression level of the *Cd/CuMT* isoform gene, a possible role of this gene during embryogenesis must be considered. Overall, the present findings may constitute a first step towards better understanding the high Cd tolerance of the ELS in this terrestrial snail species.

## Acknowledgments

This work was supported by project No. P 23635-B20 granted by the Austrian Science Foundation to R. Dallinger. Authors from the University of Innsbruck are members of “Centre of Molecular Biosciences Innsbruck” (CMBI). Authors also thank the Conseil Régional de Franche-

Comté, the Ecole Doctorale Environnement-Santé and the University of Franche-Comté for funding this work.

## Author Contributions

Conceived and designed the experiments: PEB AdV NC. Performed the experiments: PEB MN NC. Analyzed the data: PEB MN RS. Contributed reagents/materials/analysis tools: PEB RS RD MN AdV. Wrote the paper: PEB AdV NC RS VPM RD.

## References

1. Kägi JHR (1993) Evolution, structure and chemical activity of class I metallothioneins. An overview. In Suzuki KT, Imura N and Kimura M (Eds.), *Metallothionein III—Biological roles and medical implications*. Birkhäuser Verlag, Basel, pp. 29–55.
2. Blindauer CA, Leszczyszyn OI (2010) Metallothioneins: unparalleled diversity in structures and functions for metal ion homeostasis and more. *Nat Prod Rep* 27: 720–741. doi: [10.1039/b906685n](https://doi.org/10.1039/b906685n) PMID: [20442962](https://pubmed.ncbi.nlm.nih.gov/20442962/)
3. Kägi JH (1991) Overview of metallothionein. *Meth Enzymol* 205: 613–626. PMID: [1779825](https://pubmed.ncbi.nlm.nih.gov/1779825/)
4. Dallinger R, Berger B, Hunziker P, Kgi JHR (1997) Metallothionein in snail Cd and Cu metabolism. *Nature* 388: 237–238. PMID: [9230430](https://pubmed.ncbi.nlm.nih.gov/9230430/)
5. Egli D, Yepiskoposyan H, Selvaraj A, Balamurugan K, Rajaram R, et al. (2006) A family knockout of all four *Drosophila* metallothioneins reveals a central role in copper homeostasis and detoxification. *Mol Cell Biol* 26: 2286–2296. PMID: [16508004](https://pubmed.ncbi.nlm.nih.gov/16508004/)
6. Klaassen CD, Liu J, Diwan BA (2009) Metallothionein protection of cadmium toxicity. *Toxicol Appl Pharmacol* 238: 215–220. doi: [10.1016/j.taap.2009.03.026](https://doi.org/10.1016/j.taap.2009.03.026) PMID: [19362100](https://pubmed.ncbi.nlm.nih.gov/19362100/)
7. Baird SK, Kurz T, Brunk UT (2006) Metallothionein protects against oxidative stress-induced lysosomal destabilization. *Biochem J* 394: 275–283. PMID: [16236025](https://pubmed.ncbi.nlm.nih.gov/16236025/)
8. Fu C, Miao W (2006) Cloning and characterization of a new multi-stress inducible metallothionein gene in *Tetrahymena pyriformis*. *Protist* 157: 193–203. PMID: [16621695](https://pubmed.ncbi.nlm.nih.gov/16621695/)
9. Dallinger R (1996) Metallothionein research in terrestrial invertebrates: synopsis and perspectives. *Comp Biochem Physiol C Pharmacol Toxicol Endocrinol* 113: 125–133. PMID: [8646613](https://pubmed.ncbi.nlm.nih.gov/8646613/)
10. Chabicoovsky M, Niederstatter H, Thaler R, Hodl E, Parson W, et al. (2003) Localization and quantification of Cd- and Cu-specific metallothionein isoform mRNA in cells and organs of the terrestrial gastropod *Helix pomatia*. *Toxicol Appl Pharmacol* 190: 25–36. PMID: [12831780](https://pubmed.ncbi.nlm.nih.gov/12831780/)
11. Dallinger R (2005) Copper in *Helix pomatia* (Gastropoda) is regulated by one single cell type: differently responsive metal pools in rhogocytes. *Am J Physiol Regul Integr Comp Physiol* 289: R1185–R1195. PMID: [15905226](https://pubmed.ncbi.nlm.nih.gov/15905226/)
12. Hispard F, Schuler D, de Vaufléury A, Scheiffler R, Badot PM, et al. (2008) Metal distribution and metallothionein induction after cadmium exposure in the terrestrial snail *Helix aspersa* (Gastropoda, Pulmonata). *Environ Toxicol Chem* 27: 1533–1542. doi: [10.1897/07-232.1](https://doi.org/10.1897/07-232.1) PMID: [18384240](https://pubmed.ncbi.nlm.nih.gov/18384240/)
13. Höckner M, Stefanon K, de Vaufléury A, Monteiro F, Pérez-Rafael S, et al. (2011) Physiological relevance and contribution to metal balance of specific and non-specific Metallothionein isoforms in the garden snail, *Cantareus aspersus*. *Biometals* 24: 1079–1092. doi: [10.1007/s10534-011-9466-x](https://doi.org/10.1007/s10534-011-9466-x) PMID: [21625890](https://pubmed.ncbi.nlm.nih.gov/21625890/)
14. Egg M, Höckner M, Brandstätter A, Schuler D, Dallinger R (2009) Structural and bioinformatic analysis of the Roman snail Cd-Metallothionein gene uncovers molecular adaptation towards plasticity in coping with multifarious environmental stress. *Mol Ecol* 18: 2426–2443. doi: [10.1111/j.1365-294X.2009.04191.x](https://doi.org/10.1111/j.1365-294X.2009.04191.x) PMID: [19457198](https://pubmed.ncbi.nlm.nih.gov/19457198/)
15. Dallinger R, Wieser W (1984) Patterns of accumulation, distribution and liberation of Zn, Cu, Cd and Pb in different organs of the land snail *Helix pomatia* L. *Comp Biochem Physiol C* 79: 117–124. PMID: [6149855](https://pubmed.ncbi.nlm.nih.gov/6149855/)
16. Scheiffler R, Gomot-de Vaufléury A, Badot PM (2002) Transfer of cadmium from plant leaves and vegetable flour to the snail *Helix aspersa*: Bioaccumulation and effects. *Ecotoxicol Environ Saf* 53: 148–153. PMID: [12481871](https://pubmed.ncbi.nlm.nih.gov/12481871/)
17. Dallinger R, Berger B, Bauer-Hilty A (1989) Purification of cadmium-binding proteins from related species of terrestrial helicidae (Gastropoda, Mollusca): A comparative study. *Mol Cell Biochem* 85: 135–145. PMID: [2725484](https://pubmed.ncbi.nlm.nih.gov/2725484/)



18. Dallinger R, Berger B, Hunziker PE, Birchler N, Hauer CR, et al. (1993) Purification and primary structure of snail metallothionein—Similarity of the N-terminal sequence with histones H4 and H2A. *Eur J Biochem* 216: 739–746. PMID: [8404892](#)
19. Palacios O, Pagani A, Pérez-Rafael S, Egg M, Höckner M, et al. (2011) Shaping mechanisms of metal specificity in a family of metazoan metallothioneins: evolutionary differentiation of mollusc metallothioneins. *BMC Biol* 9: 4. doi: [10.1186/1741-7007-9-4](#) PMID: [21255385](#)
20. Enserink L, Luttmer W, Maas-Diepeveen H (1990) Reproductive strategy of *Daphnia magna* affects the sensitivity of its progeny in acute toxicity tests. *Aquat Toxicol* 17: 15–26.
21. Salice CJ, Roesijadi G (2002) Resistance to cadmium and parasite infection are inversely related in two strains of a freshwater gastropod. *Environ Toxicol Chem* 21: 1398–1403. PMID: [12109739](#)
22. Geffard O, Budzinski H, His E (2002) The effects of elutriates from PAH and heavy Metal polluted sediments on *Crassostrea gigas* (Thunberg) embryogenesis, larval growth and bio-accumulation by the larvae of pollutants from sedimentary origin. *Ecotoxicology* 11: 403–416. PMID: [12521137](#)
23. Druart C, Scheiffler R, de Vaufléury A (2010) Towards the development of an embryotoxicity bioassay with terrestrial snails: Screening approach for cadmium and pesticides. *J Hazard Mater* 184: 26–33. doi: [10.1016/j.jhazmat.2010.07.099](#) PMID: [20828931](#)
24. Druart C, Scheiffler R, Millet M, de Vaufléury A (2012) Landsnail eggs bioassays: A new tool to assess embryotoxicity of contaminants in the solid, liquid or gaseous phase of soil. *Appl Soil Ecol* 53: 56–64.
25. Baurand PE, de Vaufléury A, Scheiffler R, Capelli N (2013) Coupling of random amplified polymorphic DNA profiles analysis and high resolution capillary electrophoresis system for the assessment of chemical genotoxicity. *Environ Sci Technol* 47: 9505–9513. doi: [10.1021/es4021519](#) PMID: [23927493](#)
26. Baurand PE, Capelli N, Scheiffler R, de Vaufléury A (2014) An assessment of the embryotoxicity of cadmium in the terrestrial mollusk *Cantareus aspersus*: From bioaccumulation to impacts at different levels of biological organization. *Ecotoxicol Environ Saf* 101: 89–94.
27. Russo R, Bonaventura R, Zito F, Schroder H-C, Muller I, et al. (2003) Stress to cadmium monitored by metallothionein gene induction in *Paracentrotus lividus* embryos. *Cell Stress Chaperones* 8: 232–241. PMID: [14984056](#)
28. Russo R, Zito F, Matranga V (2013) Tissue-specificity and phylogenetics of PI-MT mRNA during *Paracentrotus lividus* embryogenesis. *Gene* 519: 305–310. doi: [10.1016/j.gene.2013.01.063](#) PMID: [23454788](#)
29. Roesijadi G, Hansen KM, Unger ME (1996) Cadmium-induced metallothionein expression during embryonic and early larval development of the mollusk *Crassostrea virginica*. *Tox App Pharm* 140: 356–363.
30. Lemoine S, Bigot Y, Sellos D, Cosson RP, Laulier M (2000) Metallothionein isoforms in *Mytilus edulis* (Mollusca, Bivalvia): Complementary DNA characterization and quantification of expression in different organs after exposure to cadmium, zinc, and copper. *Mar Biotechnol* 2: 195–203. PMID: [10811960](#)
31. Olsson PE, Zafarullah M, Foster R, Hamor T, Gedamu L (1990) Developmental regulation of metallothionein mRNA, zinc and copper levels in rainbow trout, *Salmo gairdneri*. *Eur J Biochem* 193: 229–235. PMID: [2226442](#)
32. Durliat M, Muller JP, André M, Wegnez M (1999) Expression of the *Xenopus laevis* metallothionein gene during ontogeny. *Int J Dev Biol* 43: 575–578. PMID: [10610032](#)
33. Simoniello P, Motta CM, Scudiero R, Trinchella F, Filosa S (2010) Spatiotemporal changes in metallothionein gene expression during embryogenesis in the wall lizard *Podarcis sicula*. *J Exp Zool A Ecol Genet Physiol* 313: 410–420. doi: [10.1002/jez.611](#) PMID: [20623798](#)
34. Roesijadi G, Hansen KM, Unger ME (1997) Metallothionein mRNA accumulation in early developmental stages of *Crassostrea virginica* following pre-exposure and challenge with cadmium. *Aquat Toxicol* 39: 185–194.
35. Meistertzheim AL, Lejart M, Le Goïc N, Thébault MT (2009) Sex-, gametogenesis, and tidal height-related differences in levels of HSP70 and metallothioneins in the Pacific oyster *Crassostrea gigas*. *Comp Biochem Physiol A Mol Integr Physiol* 152: 234–239. doi: [10.1016/j.cbpa.2008.10.004](#) PMID: [18973820](#)
36. Chabicoovsky M, Klepal W, Dallinger R (2004) Mechanisms of cadmium toxicity in terrestrial pulmonates: Programmed cell death and metallothionein overload. *Environ Toxicol Chem* 23: 648–655. PMID: [15285358](#)
37. Roesijadi G, Brubacher LL, Unger ME, Anderson RS (1997) Metallothionein mRNA induction and generation of reactive oxygen species in molluscan hemocytes exposed to cadmium in vitro. *Comp Biochem Physiol C Pharmacol Toxicol Endocrinol* 118: 171–176. PMID: [9490185](#)