



**HAL**  
open science

## Validation of climate model-inferred regional temperature change for late-glacial Europe

Oliver Heiri, Stephen J. Brooks, Hans Renssen, Alan Bedford, Marjolein Hazekamp, Boris Ilyashuk, Elizabeth S. Jeffers, Barbara Lang, Emiliya Kirilova, Saskia Kuiper, et al.

### ► To cite this version:

Oliver Heiri, Stephen J. Brooks, Hans Renssen, Alan Bedford, Marjolein Hazekamp, et al.. Validation of climate model-inferred regional temperature change for late-glacial Europe. *Nature Communications*, 2014, 5, pp.4914. 10.1038/ncomms5914 . hal-01115810

**HAL Id: hal-01115810**

**<https://hal.science/hal-01115810v1>**

Submitted on 13 Nov 2024

**HAL** is a multi-disciplinary open access archive for the deposit and dissemination of scientific research documents, whether they are published or not. The documents may come from teaching and research institutions in France or abroad, or from public or private research centers.

L'archive ouverte pluridisciplinaire **HAL**, est destinée au dépôt et à la diffusion de documents scientifiques de niveau recherche, publiés ou non, émanant des établissements d'enseignement et de recherche français ou étrangers, des laboratoires publics ou privés.

Published in final edited form as:

*Nat Commun.* ; 5: 4914. doi:10.1038/ncomms5914.

## Validation of climate model-inferred regional temperature change for late-glacial Europe

Oliver Heiri<sup>1,\*</sup>, Stephen J. Brooks<sup>2</sup>, Hans Renssen<sup>3</sup>, Alan Bedford<sup>4</sup>, Marjolein Hazekamp<sup>5</sup>, Boris Ilyashuk<sup>6</sup>, Elizabeth S. Jeffers<sup>7</sup>, Barbara Lang<sup>8</sup>, Emiliya Kirilova<sup>5</sup>, Saskia Kuiper<sup>5</sup>, Laurent Millet<sup>9</sup>, Stéphanie Samartin<sup>1</sup>, Monika Toth<sup>10</sup>, Frederike Verbruggen<sup>5</sup>, Jenny E. Watson<sup>11</sup>, Nelleke van Asch<sup>12</sup>, Emmy Lammertsma<sup>12</sup>, Leeli Amon<sup>13</sup>, Hilary H. Birks<sup>14</sup>, H. John B. Birks<sup>14,15</sup>, Morten F. Mortensen<sup>16</sup>, Wim Z. Hoek<sup>12</sup>, Enikő Magyari<sup>17</sup>, Castor Muñoz Sobrino<sup>18</sup>, Heikki Seppä<sup>19</sup>, Willy Tinner<sup>1</sup>, Spassimir Tonkov<sup>20</sup>, Siim Veski<sup>13</sup>, and André F. Lotter<sup>5</sup>

<sup>1</sup>Palaeoecology, Institute of Plant Sciences and Oeschger Centre for Climate Change Research, University of Bern, Altenbergrain 21, CH-3013 Bern, Switzerland <sup>2</sup>Department of Life Sciences, Natural History Museum, Cromwell Road, London SW7 5BD, UK <sup>3</sup>Department of Earth Sciences, Faculty of Earth & Life Sciences, VU University Amsterdam, De Boelelaan 1081, NL-1081HV Amsterdam, The Netherlands <sup>4</sup>Department of Biology, Edge Hill University, St. Helen's Road, Ormskirk, L39 4QP, UK <sup>5</sup>Palaeoecology, Dept. Physical Geography, Geosciences, Utrecht University, Budapestlaan 4, NL-3584 CD Utrecht, The Netherlands <sup>6</sup>Institute of Ecology, University of Innsbruck, Technikerstraße 25, A-6020 Innsbruck, Austria <sup>7</sup>Long-Term Ecology Laboratory, Biodiversity Institute, Department of Zoology, University of Oxford, South Parks Road, Oxford OX1 3PS, UK <sup>8</sup>Strata Environmental, 12 Chapel Walks, Kirkham, Preston, Lancashire, PR4 2TA, UK <sup>9</sup>Laboratoire Chrono-Environnement, UMR 6249 CNRS, UFR Sciences et Techniques, Université de Franche-Comté, 25030 Besançon cedex, France <sup>10</sup>Balaton Limnological Institute, MTA Centre for Ecological Research, Klebelsberg K. 3, HU-8237 Tihany, Hungary <sup>11</sup>School of Geography, Archaeology and Palaeoecology, Queens University, Belfast, BT7 1NN, UK <sup>12</sup>Department of Physical Geography, Faculty of Geosciences, Utrecht University, Heidelberglaan 2, 3508 TC Utrecht, The Netherlands <sup>13</sup>Institute of Geology at Tallinn University of Technology, Ehitajate tee 5, 19086 Tallinn, Estonia <sup>14</sup>Department of Biology and Bjerknes Centre for Climate Research, University of Bergen, PO Box 7803, N-5020 Bergen, Norway <sup>15</sup>ECRC, University College London, London WC1 6BT, UK; and School of Geography and the Environment, University of Oxford, Oxford OX1 3QY, UK <sup>16</sup>The National Museum of Denmark,

Users may view, print, copy, and download text and data-mine the content in such documents, for the purposes of academic research, subject always to the full Conditions of use:[http://www.nature.com/authors/editorial\\_policies/license.html#terms](http://www.nature.com/authors/editorial_policies/license.html#terms)

\* oliver.heiri@ips.unibe.ch.

### Author contributions

OH and AFL conceived the research and wrote the paper; OH, AFL, HJBB, SJB, HR carried out numerical and synoptic analyses; OH, AFL, HJBB, SJB, SK, MH, EK, NVA, LM, BL, SS, MT, FV, BI, JW, EJ, AB, EM, MFM, ST, WT, CMS, WH, HS, SV, HHB, LA, EL selected sites and contributed to the paleoecological interpretation, sedimentological analyses and interpretation, and dating of individual records; OH, SK, MH, EK, NVA, LM, SJB, BL, SS, MT, FV, BI, JW, AB and EJ analysed chironomid assemblages; all authors contributed to writing, with major contributions by OH, AFL, SJB, HJBB, HR, WT, HS, and HHB.

### Competing financial interests

The authors declare no competing financial interests.

Environmental Archaeology and Materials Science, Ny Vestergade 11, 1471 Copenhagen K, Denmark <sup>17</sup>Hungarian Academy of Sciences-Natural History Museum, Research group for Paleontology, P.O. Box 222, HU-1476 Budapest, Hungary <sup>18</sup>Department of Plant Biology and Soil Sciences, University of Vigo, Campus As Lagoas-Marcosende s/n, E-36310, Vigo, Spain <sup>19</sup>Department of Geosciences and Geography, P.O. Box 64, FI-00014, University of Helsinki, Finland <sup>20</sup>Laboratory of Palynology, Faculty of Biology, University of Sofia, Dragan Tzankov 8, 1164, Sofia, Bulgaria

## Abstract

Comparisons of climate model hindcasts with independent proxy data are essential for assessing model performance in non-analogue situations. However, standardized paleoclimate datasets for assessing the spatial pattern of past climatic change across continents are lacking for some of the most dynamic episodes of Earth's recent past. Here we present a new chironomid-based paleotemperature dataset designed to assess climate model hindcasts of regional summer temperature change in Europe during the late-glacial and early Holocene. Latitudinal and longitudinal patterns of inferred temperature change are in excellent agreement with simulations by the ECHAM-4 model, implying that atmospheric general circulation models like ECHAM-4 can successfully predict regionally diverging temperature trends in Europe, even when conditions differ significantly from present. However, ECHAM-4 infers larger amplitudes of change and higher temperatures during warm phases than our paleotemperature estimates, suggesting that this and similar models may overestimate past and potentially also future summer temperature changes in Europe.

## Introduction

The late-glacial period ~15-11 thousand years ago (ka BP) was characterized by major changes in climate forcings such as the extent of ice sheets, atmospheric greenhouse gas concentrations, and ocean circulation<sup>1-4</sup>. The North Atlantic region experienced abrupt variations in climate during this period, including rapid warming phases at the beginning of the Bølling-Allerød Interstadial (BA-IS) at ~14.6 ka BP and the Holocene at ~11.7 ka BP, and abrupt cooling at the beginning of the Younger Dryas (YD) at ~12.7 ka BP<sup>4-7</sup>. Since these climatic changes were driven by processes that are also expected to play an important role in determining future climate, for example variations in ocean circulation and atmospheric greenhouse gas concentrations, this period provides a crucial time-interval for understanding the response of the global climate system to rapid changes in climate forcings, and for testing climate model simulations under strongly varying boundary conditions.<sup>1, 8-10</sup>

To evaluate model performance against climate reconstructions, large and geographically extensive datasets are required that encompass regional temperature patterns. Such datasets are particularly relevant for demonstrating that climate models can adequately predict regionally diverging trends in climatic change, since the spatial resolution of most climate models presently allows for only coarse representation of geographical and topographic

features important for regional climates (e.g. complex coastlines or mountain chains). Available temperature reconstructions from Europe are based on different approaches and protocols, and include proxy types that are not only affected by temperature, but also strongly influenced by precipitation and effective moisture<sup>11–12</sup>. Hence, it is difficult to assess whether variations in temperature development reconstructed for different regions are a consequence of different proxy types and methodologies, confounding climatic variables, or varying temperature gradients across the continent. To resolve this, standardized datasets are necessary, based on proxy-indicators that consistently reflect temperature and are influenced to a lesser extent by changing precipitation or moisture. Furthermore, reconstructions should be based on a consistent and quantitative numerical approach that provides estimates of mean climate states rather than temperature ranges as are provided by some approaches to climate reconstruction.

Here we use fossil assemblages of chironomid larvae (non-biting midges) preserved in lake sediments to reconstruct variations in summer temperature across Europe. Chironomid larvae are aquatic, and in lakes winter ice-cover decouples their habitat from the direct influence of sub-zero temperatures. Therefore, chironomid assemblages are less strongly influenced by winter temperature than many other biotic temperature indicators<sup>13,14</sup>. The occurrence and abundance of chironomids in lakes are closely related to summer air and water temperatures allowing summer temperature to be estimated from chironomid assemblages<sup>14,15</sup>. In lakes, chironomid distribution is affected by water depth<sup>16,17</sup>, and therefore hydrological changes may influence chironomid assemblage composition if they lead to major changes in the water level. However, in the shallow lake basins that are commonly used for temperature reconstruction changes in water depth have only a relatively minor influence on chironomid-inferred temperatures<sup>17</sup> as long as they do not lead to a drying out or salinization of the lake. Chironomids have previously been used to reconstruct regional variations in temperatures in northeastern North America<sup>18</sup> and northwest Europe<sup>19</sup>. However, detailed reconstructions of latitudinal and longitudinal temperature gradients across continents have not yet been attempted. We present paleotemperatures reconstructed from 31 fossil chironomid sequences in Europe, covering parts of or the entire period 15–11 ka BP (Fig. 1) (see Methods). Stacked and spliced reconstructions of regional temperatures have been compiled based on the available complete or fragmentary records to summarize past July air temperature changes across the continent. We compare our chironomid-based temperature reconstructions to hindcasts of regional changes in summer temperature across Europe produced by the ECHAM-4 Atmospheric General Circulation Model<sup>1</sup>. Though more recent versions of the ECHAM model are now available (ECHAM-5–6), these hindcasts still provide the spatially most explicit late-glacial climate model runs for Europe. We show that regional patterns of temperature change reconstructed by our new chironomid-based dataset are in excellent agreement with summer temperature changes inferred across Europe by ECHAM-4, confirming that such models can correctly predict regional changes in summer temperature across the continent in periods when climate boundary conditions were substantially different from present. However, the model reconstructs larger amplitudes of change and higher temperatures during warmer climatic phases than indicated by our chironomid-based estimates.

## Results

### Geographical pattern of temperature change

All the major climatic transitions in the interval studied at ~14.6, ~12.7 and ~11.7 ka BP are apparent in the stacked reconstructions (Fig. 2). At similar latitudes, chironomid-inferred temperature variations tend to be most pronounced in western Europe (British Isles, southwestern Europe) and more muted in the east (central and southeastern sectors, Fig. 2). Stacked records from western Europe and the Baltic indicate that temperatures during the early Holocene (EH) were similar to those during the BA-IS (Fig. 2). Elsewhere, EH temperatures were warmer than during the BA-IS. We compared latitudinal temperature gradients across Europe for the time slices ~11.4, ~12.0, ~13.0, ~14.45, and ~14.9 ka BP, representing the EH, YD, late BA-IS, early BA-IS, and early late-glacial just preceding the BA-IS (ELG), respectively (Fig. 3). EH temperatures (Fig. 3A) were overall slightly cooler than today, but showed a similar latitudinal summer temperature gradient to that at present (~0.5°C per degree latitude). EH and BA-IS (Fig. 3C-D) latitudinal temperature gradients resembled each other, although in the BA-IS temperatures were slightly lower than in the EH, especially to the north. YD summer temperatures were characterized by a very steep temperature gradient ~48-53°N (Fig. 3B). Temperatures were, on average, 5.9°C below present values north of 52°N, but only 3.5°C lower south of 52°N. ELG temperatures north of ~52°N were similar to YD temperatures (average difference 0.2°C, Fig. 3F). To the south ELG temperatures were clearly lower than YD temperatures (average difference 2.6°C). Reconstructed temperatures in the early BA-IS were cooler than in the late BA-IS east of 10°E, but similar to or higher than late BA-IS temperatures west of 10°E (Fig. 4).

### Comparison with ECHAM-4 runs

ECHAM-4 climate model runs available for the late-glacial simulate major variations in the amplitude of warming at the beginning of the BA-IS and the EH across Europe (Fig. 5). In the model, warming at both transitions is largely forced by changes in North Atlantic overturning and the most pronounced temperature increase is recorded at mid-latitudes (50-60°N). The influence of these variations in ocean circulation is dampened farther inland, resulting in a distinct west-east gradient in the amplitude of warming in Europe. Chironomid-based reconstructions confirm these regional climatic patterns. The amplitude of warming at the beginning of the BA-IS decreases across the continent from west to east in both proxy and model results (Fig. 5A). Latitudinal variations in amplitude are also very similar for both approaches, although for the ELG/BA-IS transition climatic changes in northern Europe are not adequately represented in our proxy data due to an absence of records >56°N. For the EH warming, the strongest temperature increases are inferred by both approaches at ~53-60°N (Fig. 5B). Although relative temperature changes are very similar in both model and proxy results, temperature variations simulated by ECHAM-4 are generally of higher amplitude than those inferred from chironomids (Fig. 5A-B). A comparison of absolute July temperature estimates at each site reveals that the largest offsets between the two approaches are found for grid cells that were considered to still be covered by continental ice sheets in the model (Fig. 5C). For these locations the spatial resolution of ECHAM-4 is not sufficient to resolve fine-scale dynamics of continental ice retreat, leading to the prediction of ice masses at locations in which lakes already existed. For sites

unaffected by ice-sheet dynamics, model and proxy based estimates are closely correlated (Fig. 5C). However, estimates provided by ECHAM-4 are distinctly higher than proxy-based temperatures during the warm phases (BA-IS, EH), suggesting that ECHAM-4 may be overestimating July temperatures during warmer climatic conditions of the late-glacial period compared with chironomid-inferred reconstructions.

## Discussion

The excellent agreement of the geographical pattern of warming at the ELG/BA-IS and YD/EH transitions in both ECHAM-4 and our new proxy dataset impressively confirms that the climatic-forcing mechanisms assumed to lead to changes in temperature gradients across Europe in the model are likely to be correct. Increasing summer insolation caused progressively warmer summers with increasing distance from the North Atlantic. Changes in the North Atlantic overturning<sup>2,20</sup> and associated latitudinal shifts in sea ice<sup>1</sup> were responsible for the large amplitude of summer temperature changes along the Atlantic seaboard 52–60°N. Cooler ELG than YD temperatures in southern and central Europe can be explained by the more southerly position of North Atlantic sea-ice during the ELG<sup>21</sup>. Finally, long-term temperature changes observed during the BA-IS suggest that, along the North Atlantic seaboard south of 65°N, enhanced North Atlantic overturning circulation<sup>22</sup> led to warmer temperatures early in the BA-IS, whereas farther away from the Atlantic, summer temperatures followed the long-term summer insolation trend (Fig. 4).

Chironomid-based paleotemperature estimates reproduce the geographical pattern of past summer temperature change predicted in the ECHAM-4 runs (Fig. 5). Earlier comparisons of these model runs with summer temperature proxy data were based on minimum estimates of mean July temperature calculated from the occurrence of temperature sensitive plant species in different parts of north-west Europe<sup>1</sup>. This provided support for distinct latitudinal summer temperature gradients across Europe during the late-glacial period, as inferred by ECHAM-4. However, such minimum estimates of mean July temperature are of only limited use for direct proxy-to-climate model comparisons, since any temperature prediction higher than the reconstructed minimum temperature estimate will be in agreement with the proxy data. Furthermore, differences in minimum temperature estimates based on plant occurrences calculated for different periods in the past are not necessarily expected to reflect past differences in mean temperatures. In contrast, our mean temperatures reconstructed from chironomid assemblages can be directly plotted against mean temperatures inferred by ECHAM-4 (Fig. 5C) and provide support for both the latitudinal differences in the amplitude of late-glacial temperature changes inferred by ECHAM-4 across Europe, and the longitudinal ones (Fig. 5A-B).

Our paleotemperature-climate model comparison (Fig. 5) confirms that general circulation models, such as ECHAM-4, can correctly predict regionally varying temperature changes across Europe in periods when climate forcing mechanisms were substantially different from present, assuming that realistic boundary conditions are prescribed. At the same time, the smaller amplitudes of variations inferred by chironomid records suggest that climate reconstructions by ECHAM-4 and similar models may be overestimating European summer temperature change during the late-glacial and early Holocene. The most pronounced



divergence is observed for high latitudes during the YD/EH transition (Fig. 5). This raises the possibility that future climate changes associated with variations in forcing factors that were dominant in the late-glacial and early Holocene period (e.g. North Atlantic circulation, greenhouse-gas concentrations) may also be overestimated by models such as ECHAM-4. Further, independent proxy-based estimates of variations in past temperatures across Europe at similar spatial coverage as our data, and additional hindcasts of late-glacial and early Holocene climates with the newest generation of climate models will ultimately be needed to resolve this discrepancy between model and proxy results.

## Methods

### Lake-sediment records

The examined lake-sediment sequences were obtained from small lacustrine basins, similar in size to those used for developing the applied chironomid-temperature transfer function<sup>23</sup>. They span a geographical range of 42–71°N and 9°W–28°E (Supplementary Table 1). The sequences contain part of or the entire interval 15–11 ka BP and have been dated using a range of approaches, including <sup>14</sup>C dating of terrestrial plant remains, tephrochronology, and correlation to other well-dated sequences using palynostratigraphy, lithostratigraphy, or isotope stratigraphical methods ( $\delta^{18}\text{O}$  analysed on lake marl). Absolute dating of late-glacial sediment sequences is challenging due to several radiocarbon plateaux during the late-glacial, a low number of dateable terrestrial plant remains deposited in the unforested landscapes that covered large sections of Europe, and the frequent occurrence of disturbances in the lakes and their catchment (e.g. vegetation change, associated changes in erosion, lake-level fluctuations) leading to mobilization and re-deposition of terrestrial organic matter. As a consequence, we expect relatively large errors in the absolute dating (up to several centuries) for most records. However, our records are well constrained stratigraphically (e.g. via pollen or isotope analysis), allowing the determination of the major stratigraphic and climatological units of the late-glacial. These include the ELG (> 14.7 ka BP) preceding the BA-IS, the Bølling and Allerød biozones, together forming the BA-IS (14.6–12.7 ka BP), the YD cool period (12.7–11.7 ka BP), and the EH (<11.7 ka BP). As a consequence, the time intervals discussed here, including the examined time slices of ~11.4, ~12.0, ~13.0, ~14.25, ~14.45, and ~14.9 ka BP, representing the EH, the YD, the late Allerød, the middle to late Bølling, the early Bølling and the ELG, respectively, are well constrained in our data. To ensure a consistent chronological approach for all records, ages were assigned to individual samples based on linear interpolation between dated horizons. In cases where this was considered feasible, ages were extrapolated beyond the oldest/youngest chronological marker to include sections of the records just preceding or after the usually well-constrained climatic transitions of the late-glacial. Extrapolations are based on the sedimentation rates of adjacent sediment sections. In all cases extrapolations do not exceed 500 years. In a few records, age markers are based on the major changes of chironomid-inferred temperatures at the YD/EH and ELG/BA-IS transitions (Supplementary Table 2). Where these events are used as chronological constraints, either as identified in the chironomid records, or as determined by independent stratigraphical methods (e.g. palynostratigraphy,  $\delta^{18}\text{O}$ ), we used estimates for the age of these climatic transitions (the period of maximum change) as determined from the NGRIP  $\delta^{18}\text{O}$  record<sup>24</sup>. The resulting

ages are 14.64 ka BP for the ELG/BA-IS transition (in Greenland equivalent to the Greenland Stadial (GS)-2/Greenland Interstadial (GI)-1 transition), 12.71 ka BP for the BA-IS/YD transition (GI-1/GS-1 transition), and 11.63 ka BP for the YD/EH transition (GS-1/Holocene transition). All ages are given as thousands of calendar years (ka) before present, where 0 ka BP is equivalent to 1950 AD. Radiocarbon-based age estimates have been converted to calibrated radiocarbon ages BP (cal. BP). However, since our age determinations include both radiocarbon dating and non-radiocarbon approaches, ages are reported as ka BP instead of ka cal. BP. The sediment sequences have been obtained by a range of coring methods and in one case from an exposed sediment profile. With the exception of several new records from southern, eastern, central and northern Europe the records are described in a number of site-specific publications (Supplementary Table 1).

### Chironomid-based temperature reconstructions

All chironomid records were produced using standardized methods<sup>25</sup> and chironomid taxa were identified by the two principal analysts (OH, SJB) or scientists trained by them. Taxonomy followed the descriptions in reference 25. July air temperature reconstruction based on fossil chironomid assemblages was implemented using a modern chironomid-temperature calibration dataset consisting of chironomid assemblage data and mean July air temperature values for 274 lakes in Norway and Switzerland<sup>23</sup>. A transfer function for reconstructing mean July air temperature based on fossil chironomid assemblages was developed from the calibration data using weighted-averaging partial least-squares regression (WA-PLS)<sup>26,27</sup> and the software C228. During model development, 19 of the calibration dataset lakes were deleted as outliers<sup>23</sup>. Error statistics for this model were estimated using 9999 bootstrapping cycles. At the highest taxonomic resolution, the inference model predicted mean July air temperature in the modern calibration data with a root mean square error of prediction (RMSEP) of 1.40°C and a coefficient of determination between inferred and observed July air temperature values of 0.87 (Supplementary Table 2). For a number of records several fossil types had to be amalgamated into single taxonomic categories, either because poor preservation of the fossil remains did not allow reliable separation of some morphotypes or, in a few cases, because the identification of the assemblages took place before certain fossil chironomid taxa had been segregated. As a consequence there are slight differences in the taxonomic resolution of the records and the applied transfer functions (Supplementary Table 2). However, these differences are minor. A total of 151 taxa is included in the transfer function with the highest taxonomic resolution and 133 taxa in the model with the lowest resolution. Taxonomic differences of this scale have only minor effects on chironomid-based temperature inferences<sup>29</sup>.

### Modern temperature data and elevational correction

Modern temperature data were obtained from the New et al.<sup>30</sup> climatology. For comparison with fossil records mean July air temperatures for the closest gridcells to the study site were extracted from the dataset. All temperatures — modern and chironomid-inferred — were corrected to 0 m asl using a modern July air temperature lapse rate of 6°C km<sup>-1</sup> <sup>31,32</sup>. All chironomid-inferred July air temperature values were within the temperature range encompassed by the calibration dataset (3.5 to 18.4°C) before elevational correction.



## Screening and outlier deletion

Within the dated interval, chironomid-based temperature records were screened for unusual values leading to the deletion of 7 out of a total of 1431 chironomid-inferred temperature values. In some records chironomid-inferred temperatures or the stratigraphic integrity of the sediment record were considered unreliable. These sections were excluded from further analysis leading to a deletion of a further 18 samples. Of these, 13 originated from the site Lusvatnet, for which pollen analysis indicated contaminated sediments for a section of the record, two are from the site Slotseng and contain invertebrate and plant assemblages that indicate drying up of the lake basin, and three originate from the site Lago di Lavarone and were based on a very low count size (see Supplementary Table 2 and references in Supplementary Table 1).

## Stacking and splicing

Individual chironomid records can be affected by site-specific factors (e.g. aspect, groundwater or running water influence). Furthermore, many of the chironomid records were fragmentary, covering only parts of the late-glacial. Therefore, stacked records, based on several (usually 2–4) records, were produced to summarize temperature trends for different regions of Europe (Fig. 2). The procedure used to develop these regional reconstructions is summarized graphically in Supplementary Fig. 1. Stacks were produced by interpolating reconstructed temperatures to constant time intervals (10 yr) using the nearest neighbour algorithm for calculating interpolated values. Averages of several records then provided stacked records for July air temperature for a particular time-interval and region. Few of the chironomid records were continuous over the entire time window of interest. Therefore, different sections of the stacks were usually based on a variable number of records (Supplementary Fig. 2). Since some of the records tended to reconstruct cooler or warmer temperatures than others—a tendency related to the relative geographical position of the sites or to other site-specific factors—the absence of data from a particular site can have a noticeable effect on the mean temperatures in a stack. To correct for this, we produced several stacked records for regions with fragmentary temporal coverage of the late-glacial, with each stack based on the temperatures from the same subgroup of localities. These stacks were calculated so that there was an overlap with younger/older stacked records, which allowed the calculation of offsets between the different stacks. This, in turn, allowed a correction (“splicing”) of the individual stacked records to produce continuous regional reconstructions unaffected by local site-specific effects. The spliced records were anchored to the stack based on the highest number of chironomid records. Overlaps between stacks were chosen to be between 500 and 1000 years, depending on the variability and similarity of the different stacked temperature records. Variations in the resulting stacked and spliced records are driven by changes in the individual chironomid-based temperature reconstructions, whereas the absolute value is determined by the average temperatures of the section based on most chironomid records (the “anchoring” section).

Splicing of stacks works best for relatively long, continuous records, since this allows long sections of overlap between individual stacked records. Also, a large number of splices increases the likelihood of artefacts in the regional reconstructions. We therefore limited the number of records included in any given stacked section to four, even in regions and for

time-intervals for which more chironomid records would have been available. In these instances records were selected based on the quality of the chronological data, the length of the records and their sampling resolution. Estimated standard errors of prediction (eSEPs) for the stacks were calculated as the square root of the average of the squared sample specific errors of the individual paleotemperature records used to produce the stacks. This error estimate represents the uncertainty of transforming chironomid assemblage data to quantitative temperature inferences based on the transfer function and of combining multiple reconstructions into a single “stacked” temperature estimate. It does not represent uncertainties in the reconstructed July air temperatures associated with dating and interpolating the individual reconstructions.

### ECHAM-4 model runs

The ECHAM-4 model runs presented in Fig. 5 have been described in detail elsewhere<sup>1</sup>. They are based on the T42 version of the model (spatial resolution of  $\sim 2.8^\circ \times 2.8^\circ$  latitude/longitude). The four model runs we discuss, representing climate conditions during the GS-2a, GI-1e, GS-1 and the Preboreal, were performed by changing boundary conditions (ocean surface conditions, ice sheets, insolation, greenhouse-gas concentrations, vegetation) to represent these time intervals. Differences in July air temperature between GS-2a and GI-1e and between GS-1 and the Preboreal represent modelled changes at the ELG/BA-IS and YD/EH transition, respectively, and are plotted versus our chironomid-inferred temperature differences in Fig. 5.

### Supplementary Material

Refer to Web version on PubMed Central for supplementary material.

### Acknowledgments

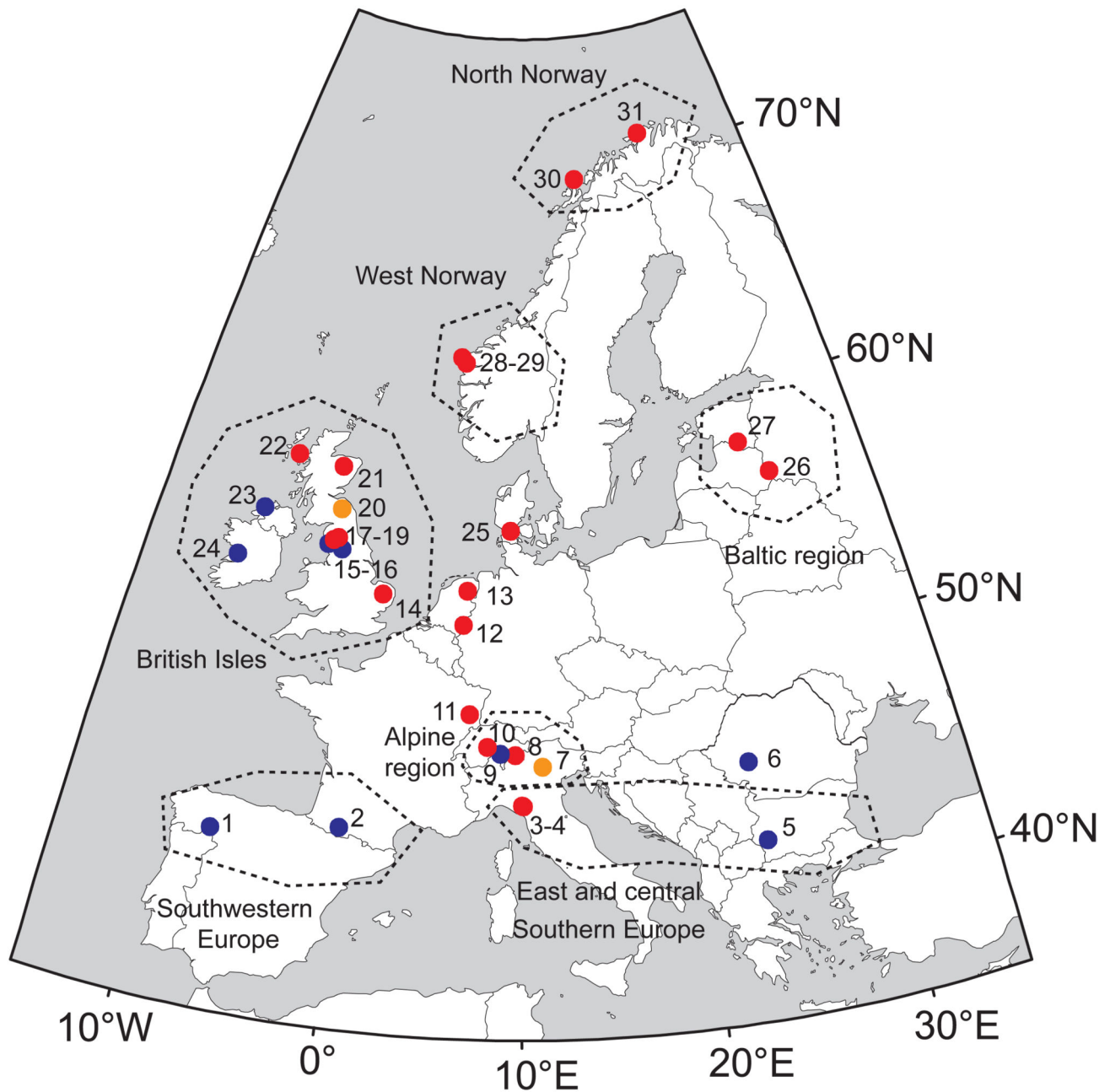
This research was supported by NWO-ALW grant 818.01.001, the European Research Council (ERC) under the European Union's Seventh Framework Programme (FP/2007-2013) (Starting Grant Project Nr. 239858), COST Action ES0907 (INTIMATE), and the Swiss National Science Foundation (SNF PP00P2-114886).

### References

1. Renssen H, Isarin RFB. The two major warming phases of the last deglaciation at  $\sim 14.7$  and  $\sim 11.5$  ka cal. BP in Europe: climate reconstruction and AGCM experiments. *Global and Planetary Change*. 2001; 30:117–153.
2. Clark PU, et al. Freshwater forcing of abrupt climate change during the last glaciation. *Science*. 2001; 293:283–287. [PubMed: 11452120]
3. Fischer H, et al. Changing boreal methane sources and constant biomass burning during the last termination. *Nature*. 2008; 452:864–867. [PubMed: 18421351]
4. Clark PU, et al. Global climate evolution during the last deglaciation. *Proceedings of the National Academy of Sciences of the United States of America*. 2012; 109:7140–7141.
5. Björck S, et al. An event stratigraphy for the last termination in the North Atlantic region based on the Greenland ice-core record: a proposal by the INTIMATE group. *Journal of Quaternary Science*. 1998; 13:283–292.
6. von Grafenstein U, Erlenheuser H, Brauer A, Jouzel J, Johnsen S. A mid-European decadal isotope climate record from 15,500 to 5000 years BP. *Science*. 1999; 284:1654–1657. [PubMed: 10356392]

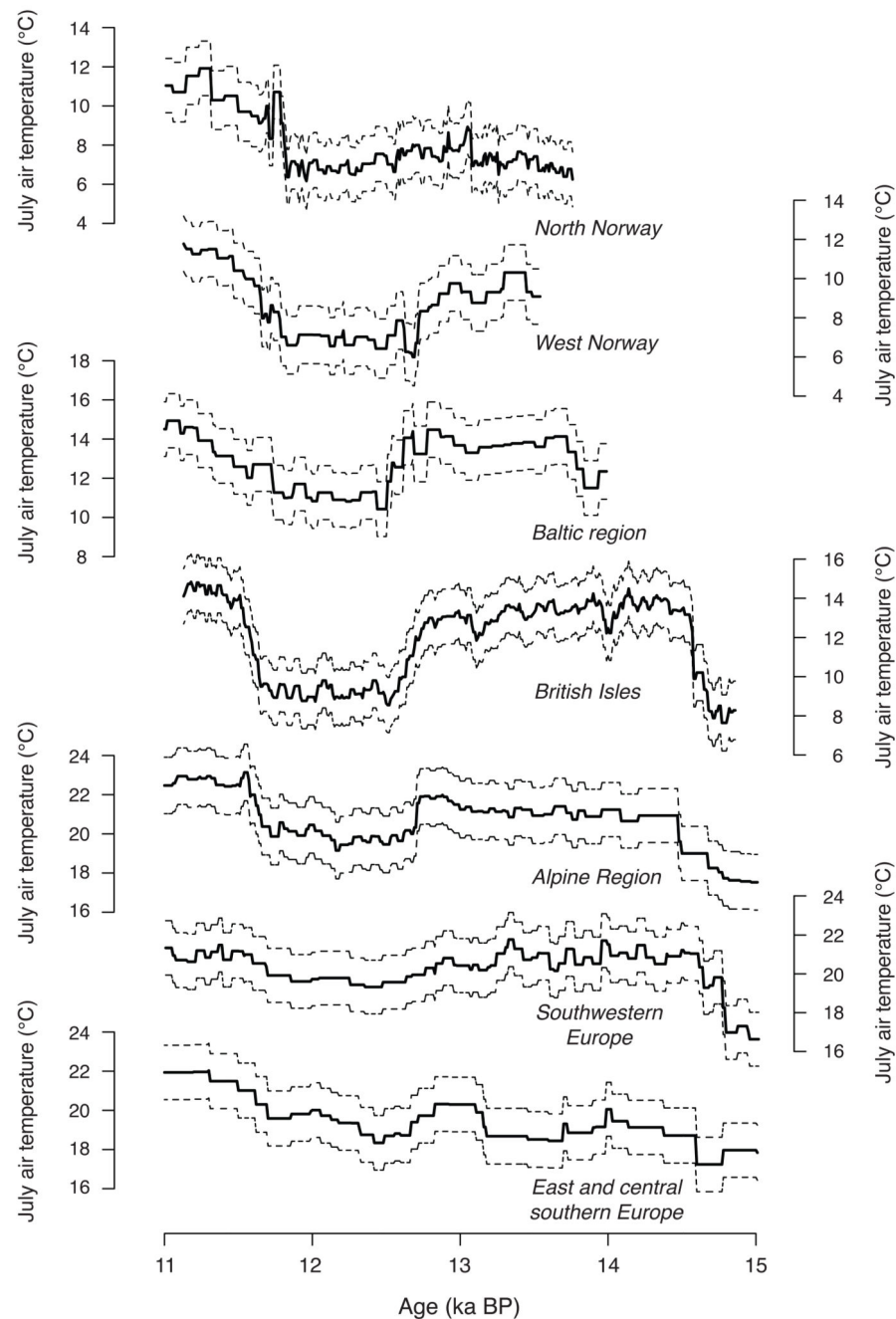
7. Rach O, Brauer A, Wilkes H, Sachse D. Delayed hydrological response to Greenland cooling at the onset of the Younger Dryas in western Europe. *Nature Geoscience*. 2014; 7:109–112.
8. Renssen H, Bogaart PW. Atmospheric variability over the ~14.7 kyr BP stadial-interstadial transition in the North Atlantic region as simulated by an AGCM. *Climate Dynamics*. 2003; 20:301–313.
9. Liu Z, et al. Transient simulation of Last Deglaciation with a new mechanism for Bølling-Allerød Warming. *Science*. 2009; 325:310–314. [PubMed: 19608916]
10. Menviel L, Timmermann A, Timm OE, Mouchet A. Deconstructing the Last Glacial termination: the role of millennial and orbital-scale forcings. *Quaternary Science Reviews*. 2011; 30:1155–1172.
11. Heiri O, et al. Palaeoclimate records 60-8 ka in the Austrian and Swiss Alps and their forelands. *Quaternary Science Reviews*. 2014; doi: 10.1016/j.quascirev.2014.05.021
12. Moreno A, et al. A compilation of Western European terrestrial records 60-8 ka BP: towards an understanding of latitudinal climatic gradients. *Quaternary Science Reviews*. 2014; doi: 10.1016/j.quascirev.2014.06.030
13. Lotter AF, et al. Rapid summer temperature changes during Termination 1a: high-resolution multi-proxy climate reconstructions from Gerzensee (Switzerland). *Quaternary Science Reviews*. 2012; 36:103–113.
14. Eggermont H, Heiri O. The chironomid-temperature relationship: expression in nature and palaeoenvironmental implications. *Biological Reviews*. 2012; 87:430–456. [PubMed: 22032243]
15. Brooks SJ. Fossil midges (Diptera: Chironomidae) as palaeoclimatic indicators for the Eurasian region. *Quaternary Science Reviews*. 2006; 25:1894–1910.
16. Korhola A, Olander H, Blom T. Cladoceran and chironomid assemblages as quantitative indicators of water depth in subarctic Fennoscandian lakes. *Journal of Paleolimnology*. 2000; 24:43–54.
17. Heiri O, Birks HJB, Brooks SJ, Velle G, Willassen E. Effects of within-lake variability of fossil assemblages on quantitative chironomid-inferred temperature reconstruction. *Palaeogeography Palaeoclimatology Palaeoecology*. 2003; 199:95–106.
18. Levesque AJ, Cwynar LC, Walker IR. Exceptionally steep north-south gradients in lake temperatures during the last deglaciation. *Nature*. 1997; 385:423–426.
19. Brooks SJ, Langdon PG. Summer temperature gradients in northwest Europe during the Lateglacial to early Holocene transition (15-8 ka BP) inferred from chironomid assemblages. *Quaternary International*. 2014; doi: 10.1016/j.quaint.2014.01.034
20. Thornalley DJR, Barker S, Broecker WS, Elderfield H, McCave IN. The deglacial evolution of North Atlantic deep convection. *Science*. 2011; 331:202–205. [PubMed: 21233385]
21. Renssen H, Vandenberghe J. Investigation of the relationship between permafrost distribution in NW Europe and extensive winter sea-ice cover in the North Atlantic Ocean during the cold phases of the Last Glaciation. *Quaternary Science Reviews*. 2003; 22:209–223.
22. McManus JF, Francois R, Gherardi J-M, Keigwin LD, Brown-Leger S. Collapse and rapid resumption of Atlantic meridional circulation linked to deglacial climate changes. *Nature*. 2004; 428:834–837. [PubMed: 15103371]
23. Heiri O, Brooks SJ, Birks HJB, Lotter AF. A 274-lake calibration data-set and inference model for chironomid-based summer air temperature reconstruction in Europe. *Quaternary Science Reviews*. 2011; 30:3445–3456.
24. Rasmussen SO, et al. A new Greenland ice core chronology for the last glacial termination. *Journal of Geophysical Research-Atmospheres*. 2006; 111:D06102.
25. Brooks SJ, Langdon PG, Heiri O. The identification and use of Palaeartic Chironomidae larvae in palaeoecology. *Quaternary Research Association Technical Guide*. 2007; 10:1–276.
26. ter Braak CJF, Juggins S. Weighted averaging partial least squares regression (WA-PLS): an improved method for reconstructing environmental variables from species assemblages. *Hydrobiologia*. 1993; 269/270:485–502.
27. ter Braak, CJF.; Juggins, S.; Birks, HJB.; van der Voet, H. *Multivariate Environmental Statistics*. Patil, GP.; Rao, CR., editors. Elsevier Science Publishers; Amsterdam: 1993. p. 525-560.
28. Juggins, S. *C2 Version 1.5 User Guide*. Software for Ecological and Palaeoecological Data Analysis and Visualisation. Newcastle Univ; Newcastle upon Tyne: 2007.

29. Heiri O, Lotter AF. How does taxonomic resolution affect chironomid based temperature reconstruction? *Journal of Paleolimnology*. 2010; 44:589–601.
30. New M, Lister D, Hulme M, Makin I. A high-resolution data set of surface climate over global land areas. *Climate Research*. 2002; 21:1–25.
31. Livingstone DM, Lotter AF, Walker IR. The decrease in summer water temperature with altitude in Swiss alpine lakes: A comparison with air lapse rates. *Arctic, Antarctic and Alpine Research*. 1999; 31:341–352.
32. Renssen H, et al. The spatial and temporal complexity of the Holocene thermal maximum. *Nature Geoscience*. 2009; 2:410–413.



**Fig. 1. Location of the chironomid-based temperature records in Europe.**

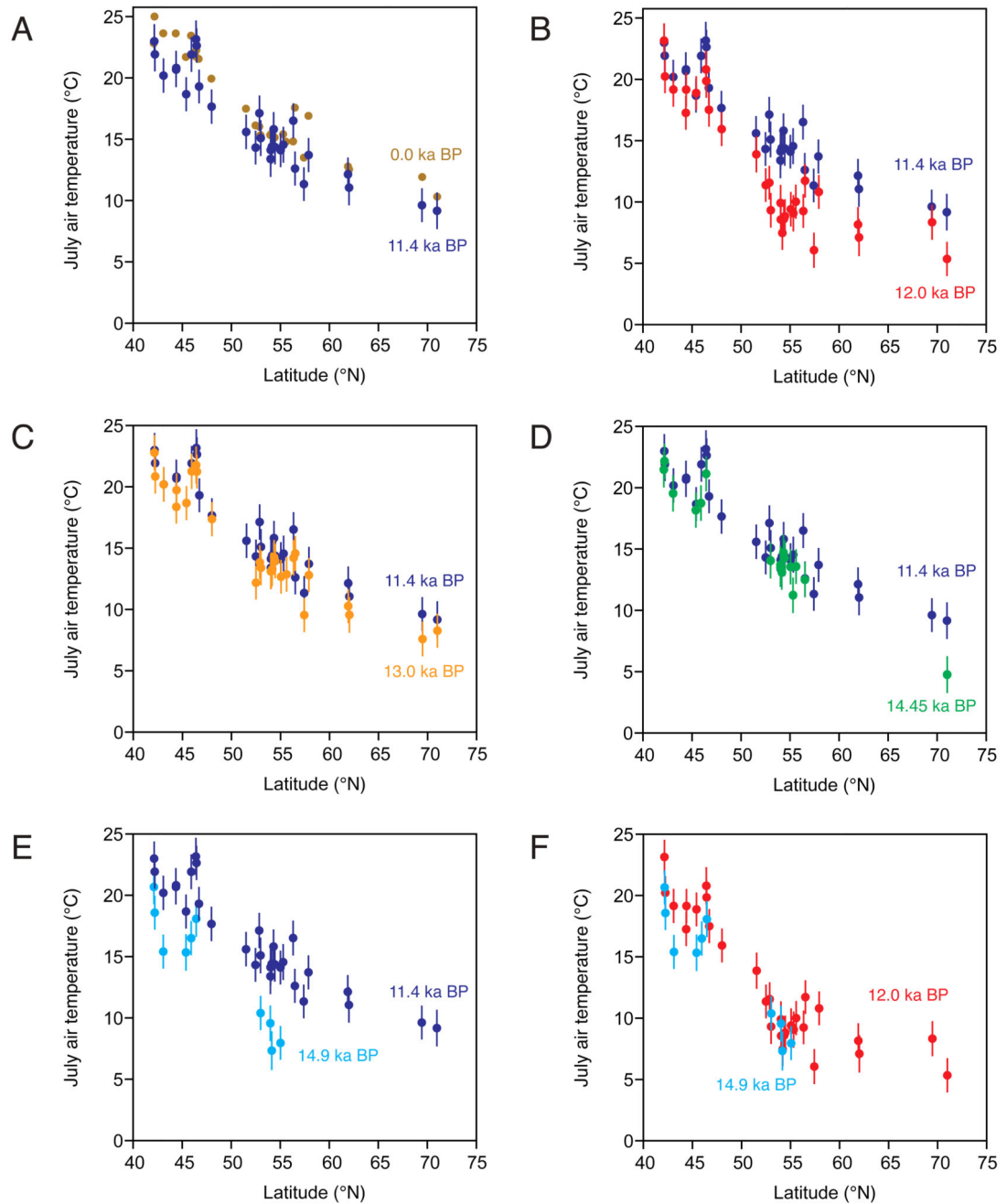
Site numbers are explained in Supplementary Table 1. Records cover the YD/EH transition (red), ELG/BA-IS transition (orange), or both (blue). Dotted lines indicate the regions for which stacked records are provided in Fig. 2.



**Fig. 2. Regional temperature reconstructions for different parts of Europe.**

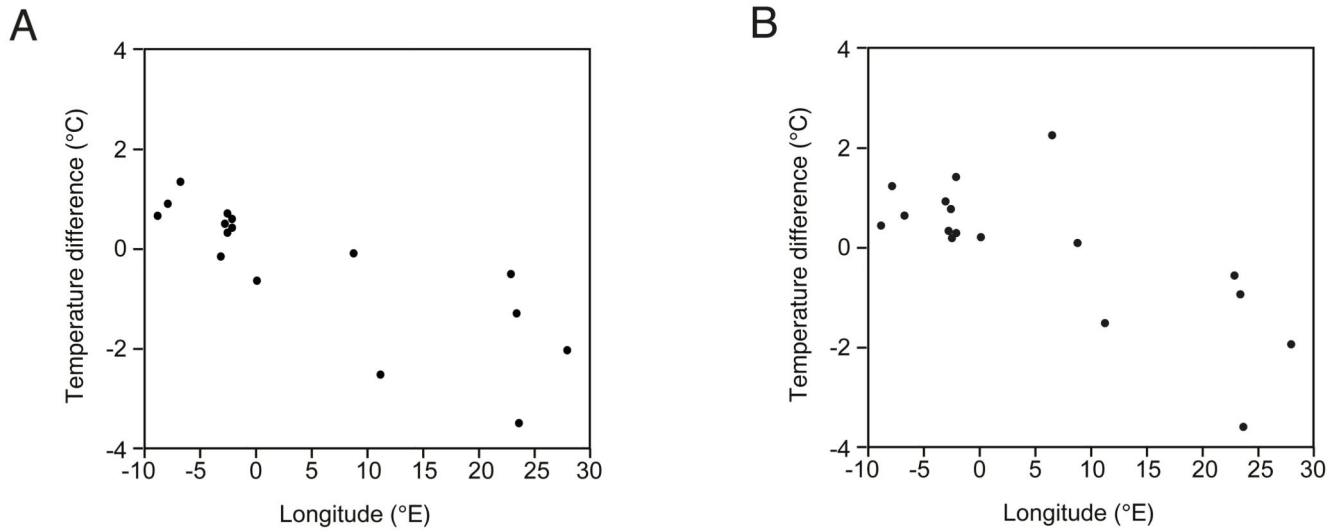
Stacked and spliced July temperature reconstructions were calculated based on the individual chironomid-inferred temperature records available for different regions of Europe. Dashed lines indicate the estimated error of prediction (see Methods). Inferred temperatures are adjusted to modern sea-level. Ages are indicated as thousands of calendar years (ka) before present (0 ka BP = 1950 AD).





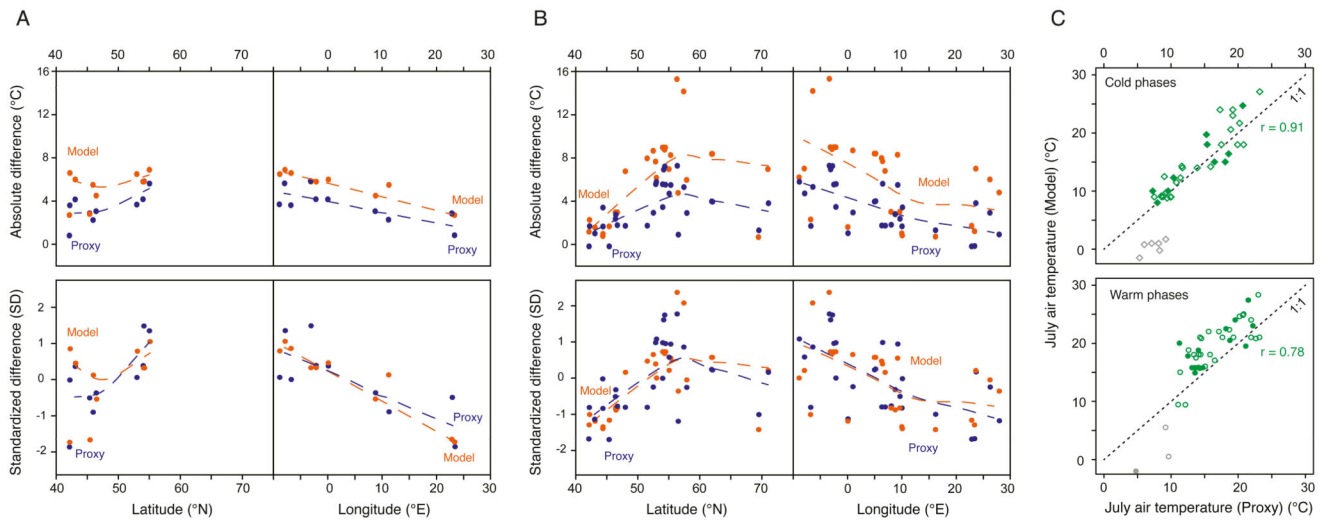
**Fig. 3. Latitudinal changes in July temperature across Europe.**

(A) EH (~11.4 ka BP, dark blue) compared with modern temperatures (brown); (B) EH compared with YD (~12.0 ka BP, red); (C) EH compared with late BA-IS (~13.0 ka BP, orange); (D) EH compared with early BA-IS (~14.45 ka BP, green); (E) EH compared with ELG (~14.9 ka BP, light blue); (F) YD compared with ELG. Inferred temperatures are adjusted to modern sea level.



**Fig. 4. Temperature trends within the BA-IS.**

Differences between July temperatures reconstructed by the chironomid records for the early BA-IS and the late BA-IS are plotted relative to longitude. Differences are shown between the periods ~14.45 and ~13.0 ka BP (A) and ~14.25 and ~13.0 ka BP (B).



**Fig. 5. Comparison of proxy-based temperature estimates with climate model runs.**

Chironomid-inferred July temperatures are compared with July temperatures as hindcast for our sites by the ECHAM-4 climate model1. A-B: Latitudinal and longitudinal variations in absolute and standardized temperature changes for the ELG/BA-IS (A) and YD/EH transition (B). C: Direct comparison of chironomid- and model-inferred July temperatures for the cold (upper panel) and warm phases (lower panel) of the examined time interval (open diamonds: YD, filled diamonds: ELG, open circles: EH, filled circles: BA-IS). Sites in grid cells for which the model assumes the presence of continental ice sheets are plotted in grey (not taken into account for calculating Pearson correlation ( $r$ ) values). Dashed lines in (A-B) are fitted using locally weighted regression (LOESS) (span 1.0). Dashed lines in (C) represent unity.