



**HAL**  
open science

**INFLUENCE OF IONIC CONTENTS ON THE  
STRATIFICATION OF ASTOMATIA AND  
HYSTEROGINETIDAE (CILIOPHORA,  
OLIGOHYMENOPHORA) ALONG THE DIGESTIVE  
TRACT OF ALMA EMINI (OLIGOCHAETE,  
GLOSSOSCOLECIDAE) FROM THE CENTER  
REGION OF CAMEROON**

Paul Alain Nana, Zéphyrin Fokam, Pierre Ngassam, Gideon Aghaindum  
Ajeegah, Karine Moche, Geneviève Bricheux, Philippe Bouchard, Bernard  
Vignes, Téléphore Sime-Ngando

**HAL Id: hal-01114626**

**<https://hal.science/hal-01114626v2>**

Submitted on 20 Oct 2014

**HAL** is a multi-disciplinary open access archive for the deposit and dissemination of scientific research documents, whether they are published or not. The documents may come from teaching and research institutions in France or abroad, or from public or private research centers.

L'archive ouverte pluridisciplinaire **HAL**, est destinée au dépôt et à la diffusion de documents scientifiques de niveau recherche, publiés ou non, émanant des établissements d'enseignement et de recherche français ou étrangers, des laboratoires publics ou privés.

► **To cite this version:**

Paul Alain Nana, Zéphyrin Fokam, Pierre Ngassam, Gideon Aghaindum Ajeegah, Karine Moche, et al.. INFLUENCE OF IONIC CONTENTS ON THE STRATIFICATION OF ASTOMATIA AND HYSTEROGINETIDAE (CILIOPHORA, OLIGOHYMENOPHORA) ALONG THE DIGESTIVE TRACT OF ALMA EMINI (OLIGOCHAETE, GLOSSOSCOLECIDAE) FROM THE CENTER REGION OF CAMEROON. *International Journal of Current Research*, 2014, 6 (1), pp.4468-4474. hal-01114626v2



ISSN: 0975-833X

## RESEARCH ARTICLE

### INFLUENCE OF IONIC CONTENTS ON THE STRATIFICATION OF ASTOMATIA AND HYSTERICINETIDAE (CILIOPHORA, OLIGOHYMENOPHORA) ALONG THE DIGESTIVE TRACT OF *ALMA EMINI* (OLIGOCHAETE, GLOSSOSCOLECIDAE) FROM THE CENTER REGION OF CAMEROON

\*<sup>1</sup>NANA Paul Alain, <sup>2</sup>FOKAM Zéphyrin, <sup>1</sup>NGASSAM Pierre, <sup>1</sup>AJEAGAH Gideon, <sup>3</sup>MOCHE Karine, <sup>4,5</sup>BRICHEUX Geneviève, <sup>4</sup>BOUCHARD Philippe, <sup>4</sup>VIGUES Bernard, <sup>4,5</sup>SIME-NGANDO Télésphore

<sup>1</sup>Laboratory of General Biology, University of Yaoundé I, Faculty of Science, P.O. Box 812, Yaoundé, Cameroon

<sup>2</sup>Department of Biology, Higher Teacher Training College, University of Bamenda, P.O. Box 39, Bamenda, Cameroon

<sup>3</sup>Laboratoire d'entomologie, Institut de Recherche Agricole pour le Développement, Station Polyvalente de Recherche Agricole, BP 44 Dschang, Cameroun

<sup>4</sup>Laboratoire Microorganismes : Génome et Environnement, Université Blaise Pascal de Clermont Ferrand II, BP 10448, F-63000 Clermont-Ferrand, France

<sup>5</sup>Centre National de Recherche Scientifique, UMR 6023, BP 80026, F-63171 Aubière Cedex, France

#### ARTICLE INFO

##### Article History:

Received 16<sup>th</sup> September, 2013  
Received in revised form  
30<sup>th</sup> October, 2013  
Accepted 23<sup>rd</sup> December, 2013  
Published online 26<sup>th</sup> January, 2014

##### Key words:

*Alma emini*,  
Astomatia,  
Hystericinetidae,  
Intestinal liquid,  
Ionic contents,  
Microhabitat.

#### ABSTRACT

The intestinal liquid of *A. emini* was extracted using the vacuum aspiration technique, followed by measurement of ion concentrations and concomitantly recorded species abundance. Nitrate ( $\text{NO}_3^-$ ) concentration decreased from the foregut to the hindgut. Nitrites ( $\text{NO}_2^-$ ), ammoniums ( $\text{NH}_4^+$ ) and orthophosphates ( $\text{PO}_4^{3-}$ ) reached their greatest levels in the midgut. Furthermore, correlation analyses between ion contents and ciliate abundance in different compartments were performed. In the foregut, a positive and significant correlation was found between the abundance of the *Paracoelophrya ebebdensis* and  $\text{PO}_4^{3-}$ . In the midgut, a positive and significant correlation was observed between the number of the ciliates *Dicoelophrya mediovaculata*; *Coelophrya roquei*; *Coelophrya ovales*; *Ptychostomum commune* and  $\text{NO}_2^-$ ; *Almophrya mediovaculata* and  $\text{NH}_4^+$ . In this same compartment, a positive and significant correlation was also observed between the abundance of *Ptychostomum prolixus* and  $\text{NO}_2^-$ . In the hindgut, a positive and significant correlation was found between the values of  $\text{PO}_4^{3-}$  and *Ptychostomum variabilis* abundance. These results suggest that each portion of the digestive tract of *A. emini* can be considered as a set of natural micro-habitat in which a large number of ions generate ecological niches suitable for the Survival of a specific group of ciliate species.

Copyright © NANA Paul Alain et al. This is an open access article distributed under the Creative Commons Attribution License, which permits unrestricted use, distribution, and reproduction in any medium, provided the original work is properly cited.

#### INTRODUCTION

The oligochaeta annelids are grouped into three ecological categories: epigeic, anecic and endogeic (Bouché 1972, 1977). *Alma emini* which measures 51 cm on average and weighs 3.8 g is an anecic species belonging to the family of Glossoscolecidae. This fairly pigmented worm is found in the wet soil, near the less polluted rivers. Like all oligochaeta, it is a hermaphrodite and creates more or less deep galleries, probably, in response to various constraints such as the content of food and water, the temperature or the degree of oxygenation (Jégou *et al.*, 2000). These galleries

increase soil macroporosity and consequently, contribute to its aeration (Lavelle 1997) and to water infiltration. They also facilitate root soaking in the soil as well as the movements of invertebrates (Jégou *et al.*, 2002). The role of *A. emini* in the formation, dynamics and fertility of soil has been long known (Darwin 1881). Besides its role of "the engineer" of the soil, *A. emini* is regarded as a microhabitat due to the fact that its digestive tract lodges an important microbial fauna (protozoa, bacteria, and viruses). The protozoa are mainly represented by ciliates belonging to Heterotrichida (Albaret 1975, Albaret and Njiné 1975), Hystericinetidae (Njiné and Ngassam 1993; Ngassam *et al.*, 1993, Ngassam and Grain 1997, 2000) and Astomatia (de Puytorac 1968, 1969; de Puytorac and Dragesco 1969a, b; Ngassam 1983; Fokam *et al.*, 2008, 2011, 2012).

\*Corresponding author: NANA Paul Alain, Laboratory of General Biology, University of Yaoundé I, Faculty of Science, P.O. Box 812, Yaoundé, Cameroon.

These studies demonstrated that several species of ciliates may be found simultaneously in the same worm, each of them living in a given compartment that is favorable to its development. Up to now, the reason of this stratification still remains unclear. Until now, very few data is available on the living conditions of these endocommensal ciliates of the digestive tract of their host. The aim of this study is to assess whether ionic contents (Nitrate, Nitrites, ammoniums, and orthophosphates) may influence the distribution and abundance of ciliate species along of digestive tract of *Alma emini*.

## MATERIALS AND METHODS

### Collection and identification of earthworms

Earthworms were collected on Sanaga River bank in Ebebda village, located between 11°30' and 11°50' of Eastern longitude and 4°00' and 4°30' of Northern latitude, 60 km north of Yaoundé-Cameroon (Figure 1). Worms were then identified according to the keys described by Sims and Gerard (1999). These worms were randomly divided into two batches for the assessment of ion content and abundance of ciliate species present in their digestive tract.

### Measurements of ions of the earthworm's intestinal liquid

Once in the laboratory, the first batch of earthworms was carefully washed with tap water, and then fixed using formalin (10%). The digestive tract of each of these worms was then separated from the rest of its body and stretched on a filter paper. Once the blood and the coelomic liquid dried up, the intestine of worms was divided into three equivalent portions (fore, mid and hindgut) (Figure 2). The content of each portion of the digestive tract was emptied in an earthenware dish by applying a slight pressure to the walls of the intestine, moving from the middle towards the extremities. The intestinal content was placed on a glass with very fine meshes (1-2 µm). The yellowish liquid was aspirated using a vacuum pump and collected in a flask. This technique, developed by de Puytorac and Mauret (1956), is fast and allows the collection of three to four drops of the intestinal liquid deprived of any particles. In order to collect sufficient amount of the earthworm's digestive liquid for direct measurements of ions, 25 earthworms were used for each series of experiment. Thirty series of identical experiments were performed during the whole study. The concentrations of the various ions were obtained by colorimetry with spectrophotometer HACH DR/2800 (Hach Lange, Germany). The reagents used are: the reagent of

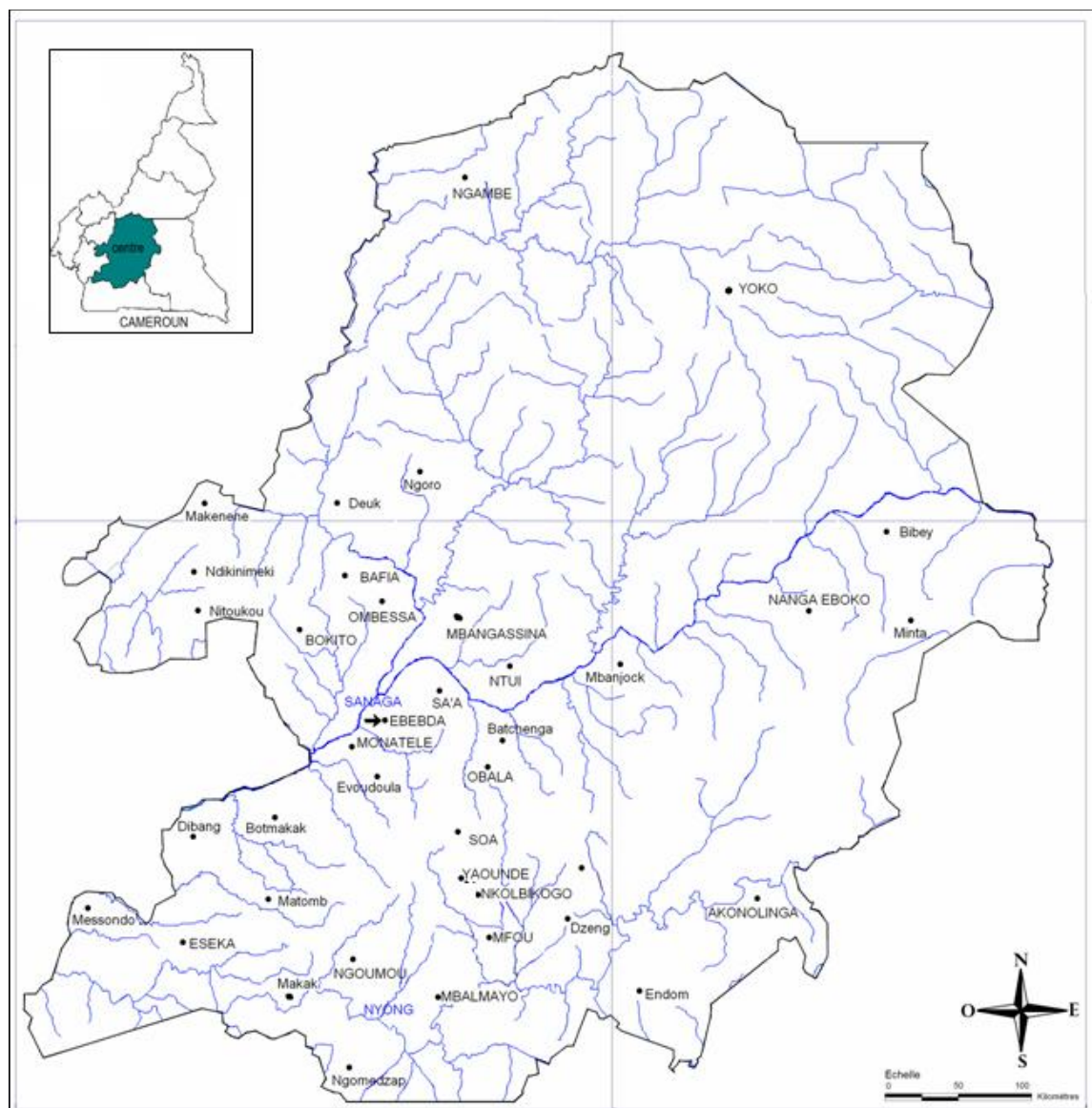


Figure 1. Map of the centre region of Cameroon showing the sampling site for *A. emini*

Nessler for  $\text{NH}_4^+$ , Nitriver III (Permachem Reagents, Germany) for  $\text{NO}_2^-$ , Nitriver VI (Permachem Reagents, Germany) for  $\text{NO}_3^-$  and Phosver III (Permachem Reagents, Germany) for  $\text{PO}_4^{2-}$ .

### Identification and enumeration of ciliates

Worms of the second batch were cut alive in three compartments from the prostomium to the pygidium as above (fore, mid, and hindgut) (Figure 2). Each portion was dilacerated in a Petri dish (10 cm diameter) containing 10-15 ml of mineral water (Volvic™, France). Ciliates found in these different portions of the earthworms were identified according to the keys previously described (de Puytorac 1968, 1969; de Puytorac and Dragesco 1969a, b; Ngassam 1983; Njiné and Ngassam 1993; Ngassam *et al.*, 1993; Ngassam and Grain 1997, 2000; Fokam *et al.*, 2008, 2012). They were sorted and counted under a binocular dissecting scope Wild M5 (Heerbrugg, Germany) at 250X magnification. This experiment was performed on 30 earthworms.

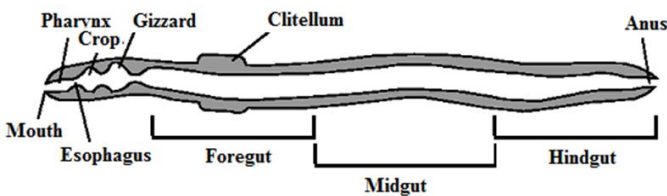


Figure 2. Diagram of the digestive tract of earthworms (Horn *et al.*, 2003 modified)

### Statistical analyses

Correlation tests were used to assess the degree of binding between the ion concentrations and ciliate abundance in different portions of digestive tract. Since our variables do not follow a normal distribution, we applied correlation test 'r' of Spearman to analyze our data. P-values were used to assess the degree of significance of correlation between ion concentration and ciliate abundance. P less than 0.05 were set as significant. The means of various ion concentrations in different portions of the digestive tract were compared using the Kruskal Wallis 'H' test. The 'U' Mann-Whitney test was used to compare the means of each parameter two by two. The criterion for significance was set at  $P < 0.05$ . Values presented in the tables and figures are the mean  $\pm$  standard deviation of the mean.

## RESULTS

During this study, a total of 780 earthworms of *Alma emini* were dissected: 750 worms were used for measurements of ions and 30 for studies of biodiversity of ciliates along the digestive tract.

### Ionic contents

The various ionic concentrations varied from one to another portion of the digestive tract of *A. emini*. Nitrates varied from  $7.02 \pm 0.77 \text{ mg.L}^{-1}$  in the foregut, to  $3.63 \pm 0.23 \text{ mg.L}^{-1}$  in the midgut, and  $3.40 \pm 0.19 \text{ mg.L}^{-1}$  in the hindgut. It comes out from these results that the ionic content of  $\text{NO}_3^-$  decreased gradually (Figure 3A). The mean concentration of  $\text{NO}_3^-$  of whole intestinal liquid of the worm was approximately  $4.68 \pm 0.39 \text{ mg.L}^{-1}$ . Nitrites concentrations were very weak compared

to the other proportioned ionic, and varied very little. They were  $0.19 \pm 0.01 \text{ mg.L}^{-1}$  in the foregut,  $0.22 \pm 0.02 \text{ mg.L}^{-1}$  in the midgut, and  $0.16 \pm 0.01 \text{ mg.L}^{-1}$  in the hindgut (Figure 3B). The mean concentration of  $\text{NO}_2^-$  of the whole digestive tract was  $0.19 \pm 0.01 \text{ mg.L}^{-1}$ . The contents of  $\text{PO}_4^{2-}$  in intestinal liquid of the worm slightly increased from the foregut ( $3.75 \pm 0.03 \text{ mg.L}^{-1}$ ) to the midgut ( $4.80 \pm 0.07 \text{ mg.L}^{-1}$ ), and finally diminished in the hindgut ( $3.60 \pm 0.11 \text{ mg.L}^{-1}$ ) (Figure 3C). Finally, the mean content of  $\text{PO}_4^{2-}$  of the whole digestive tract was  $4.05 \pm 0.07 \text{ mg.L}^{-1}$ .

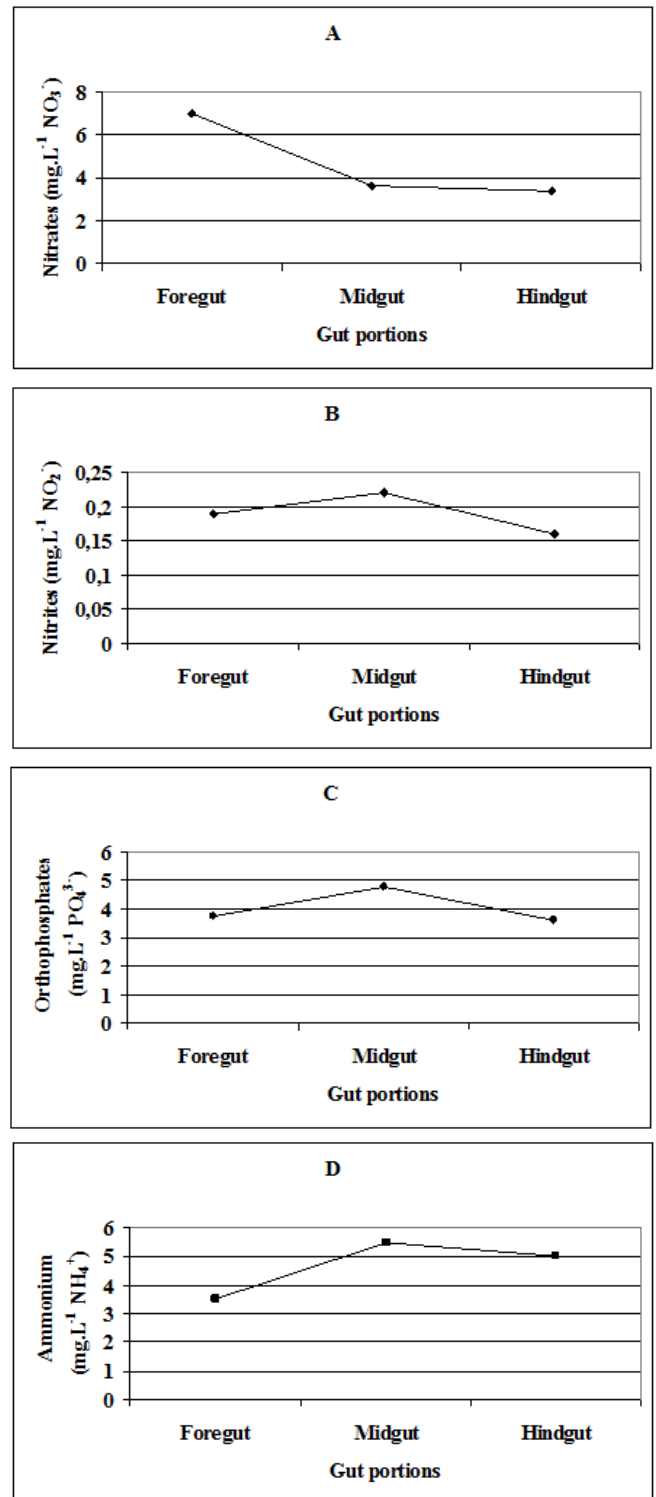


Figure 3. Variation of the ionic contents along the digestive tract of *A. emini*. A: nitrate; B: Nitrite; C: orthophosphate; D: ammonium

The ionic concentrations of NH<sub>4</sub><sup>+</sup> varied from 3.51 ± 0.38 mg.L<sup>-1</sup> in the foregut, to 5.50 ± 0.63 mg.L<sup>-1</sup> in the midgut, and 5.02 ± 0.78 mg.L<sup>-1</sup> in the hindgut (Figure 3D). The mean concentration of NH<sub>4</sub><sup>+</sup> of intestinal liquid of whole digestive tract was close to 4.68 ± 0.50 mg.L<sup>-1</sup>. It appears from Figure 3 that concentrations of PO<sub>4</sub><sup>2-</sup>, NO<sub>2</sub><sup>-</sup> and NO<sub>3</sub><sup>-</sup> were higher in the midgut than in the two other portions of the intestine.

**Biodiversity and abundance of ciliates**

Twenty three species belonging to nine genera of ciliates were found during this study. Twelve species belonged to the Subclass of Astomatia while the eleven others were Hysteroecinetidae (Table 1).

Among the 762 Astomatia recorded in the digestive tract of *Alma emini*, 462 were found in their foregut, 264 in their midgut and 36 in their hindgut. The abundance of Astomatia then significantly decreased gradually along the digestive tract of earthworms (Table 1). The Hysteroecinetidae ciliates were mostly found in the hindgut (128 specimen), while they were absent in the foregut and only 86 were found in the midgut. We noted however, the existence of a buffer medium in the midgut where Hysteroecinetidae and Astomatia (*Dicoelophrya almae*, *Dicoelophrya mediovacuolata*) ciliates dwelled together. In addition, we noted an effective cohabitation among species of the same genus (*Almophryra bivacuolata*, *Almophryra mediovacuolata* and *Almophryra laterovacuolata*; *Coelophrya ebebdensis* and *Coelophrya roquei*; *Ptychostomum prolixus* and *Ptychostomum commune*) (Table 1).

**Table 1. Biodiversity and abundance of the ciliates along the digestive tract of A. Emini**

Species	Digestive tract		
	Foregut (m ± sd)	Midgut (m ± sd)	Hindgut (m ± sd)
<i>Almophryra bivacuolata</i> de Puytorac and Dragesco, 1969b	58 ± 11	25 ± 4	0
<i>Almophryra mediovacuolata</i> Ngassam, 1983	73 ± 10	28 ± 5	0
<i>Almophryra laterovacuolata</i> de Puytorac and Dragesco, 1969b	14 ± 3	7 ± 1	0
<i>Dicoelophrya almae</i> de Puytorac and Dragesco, 1969b	0	23 ± 7	5 ± 2
<i>Dicoelophrya mediovacuolata</i> Fokam et al., 2012	0	20 ± 5	7 ± 2
<i>Paracoelophrya intermedia</i> de Puytorac, 1969	48 ± 8	27 ± 5	3 ± 1
<i>Paracoelophrya polymorphus</i> Fokam et al., 2012	33 ± 6	19 ± 4	1 ± 0
<i>Paracoelophrya ebebdensis</i> Fokam et al., 2012	56 ± 7	34 ± 7	18 ± 7
<i>Metaracoelophrya. intermedia</i> de Puytorac and Dragesco, 1969a	32 ± 6	18 ± 8	1 ± 0
<i>Coelophrya roquei</i> de Puytorac and Dragesco, 1969b	62 ± 4	24 ± 3	1 ± 0
<i>Coelophrya ovales</i> Fokam et al., 2008	27 ± 4	16 ± 3	0
<i>Coelophrya ebebdensis</i> Fokam et al., 2008	59 ± 9	23 ± 6	0
<i>Metaptychostomum ebebdae</i> Ngassam and Grain, 1997	0	17 ± 3	6 ± 2
<i>Metaptychostomum pirimorphus</i> Ngassam and Grain, 2000	0	14 ± 4	7 ± 2
<i>Ptychostomum sanagae</i> Ngassam and Grain, 2000	0	13 ± 4	2 ± 1
<i>Ptychostomum prolixus</i> Njiné and Ngassam, 1993	0	2 ± 1	12 ± 4
<i>Ptychostomum commune</i> de Puytorac, 1968	0	3 ± 1	17 ± 5
<i>Ptychostomum macrostomum</i> Njiné and Ngassam, 1993	0	10 ± 2	13 ± 3
<i>Ptychostomum elongatum</i> Njiné and Ngassam, 1993	0	0	12 ± 3
<i>Ptychostomum variabilis</i> Ngassam and Grain, 2000	0	4 ± 2	20 ± 6
<i>Proptychostomum commune</i> Ngassam and Grain, 1997	0	0	11 ± 3
<i>Proptychostomum simplex</i> Ngassam and Grain, 1997	0	4 ± 2	22 ± 3
<i>Preptychostomum microstomum</i> Ngassam et al., 1993	0	19 ± 6	6 ± 3

m : mean ; sd : standard deviation

**Table 2. Correlation between ciliates abundance and ionic contents in the different portions of the digestive tract**

Correlations	Foregut				Midgut				Hindgut			
	NO <sub>3</sub> <sup>-</sup>	NO <sub>2</sub> <sup>-</sup>	NH <sub>4</sub> <sup>+</sup>	PO <sub>4</sub> <sup>3-</sup>	NO <sub>3</sub> <sup>-</sup>	NO <sub>2</sub> <sup>-</sup>	NH <sub>4</sub> <sup>+</sup>	PO <sub>4</sub> <sup>3-</sup>	NO <sub>3</sub> <sup>-</sup>	NO <sub>2</sub> <sup>-</sup>	NH <sub>4</sub> <sup>+</sup>	PO <sub>4</sub> <sup>3-</sup>
<i>Almophrya bivacuolata</i>	0,424	0,841	0,759	0,076	0,629	0,551	0,452	0,506	-	-	-	-
<i>Almophrya mediovacuolata</i>	0,883	0,569	0,773	0,470	0,714	0,736	0,043*	0,109	-	-	-	-
<i>Almophrya laterovacuolata</i>	0,391	0,941	0,553	0,622	0,922	0,157	0,714	0,297	-	-	-	-
<i>Dicoelophrya almae</i>	-	-	-	-	0,599	0,113	0,312	0,818	0,630	0,581	0,162	<b>0,456</b>
<i>Dicoelophrya mediovacuolata</i>	-	-	-	-	0,106	0,026*	0,258	0,476	0,863	0,753	0,891	<b>0,902</b>
<i>Paracoelophrya intermedia</i>	0,894	0,066	0,758	0,152	0,355	0,777	0,748	0,207	0,535	0,311	0,839	<b>0,311</b>
<i>Paracoelophrya polymorphus</i>	0,262	0,261	0,215	0,482	0,718	0,925	0,480	0,692	0,857	0,098	0,959	<b>0,625</b>
<i>Paracoelophrya ebebdensis</i>	0,189	0,365	0,423	0,037*	0,629	0,627	0,077	0,674	0,267	0,467	0,433	<b>0,398</b>
<i>Metaracoelophrya intermedia</i>	0,878	0,893	0,936	0,607	0,890	0,353	0,851	0,083	0,589	0,311	0,813	<b>0,063</b>
<i>Coelophrya roquei</i>	0,706	0,590	0,756	0,615	0,934	0,050*	0,820	0,528	0,764	0,115	0,926	<b>0,529</b>
<i>Coelophrya ovales</i>	0,078	0,865	0,818	0,193	0,704	0,048*	0,456	0,968	-	-	-	-
<i>Coelophrya ebebdensis</i>	0,320	0,349	0,548	0,272	0,589	0,111	0,318	0,189	0,657	0,117	1,000	<b>0,455</b>
<i>Anoplophrya simplex</i>	0,238	0,819	0,697	0,436	0,682	0,730	0,553	0,070	-	-	-	-
<i>Metaptychostomum ebebdae</i>	-	-	-	-	0,593	0,700	0,345	0,436	0,924	0,305	0,090	<b>0,436</b>
<i>Metaptychostomum pirimorphus</i>	-	-	-	-	0,793	0,237	0,619	0,727	0,240	0,830	0,758	<b>0,792</b>
<i>Ptychostomum sanagae</i>	-	-	-	-	0,274	0,336	0,746	0,453	0,060	0,765	0,200	<b>0,213</b>
<i>Ptychostomum prolixus</i>	-	-	-	-	0,276	0,005**	0,286	0,740	0,117	0,358	0,707	<b>0,503</b>
<i>Ptychostomum commune</i>	-	-	-	-	0,384	0,038*	0,936	0,183	0,737	0,151	0,133	<b>0,697</b>
<i>Ptychostomum macrostomum</i>	-	-	-	-	0,171	0,442	0,725	0,465	0,984	0,789	0,831	<b>0,767</b>
<i>Ptychostomum elongatum</i>	-	-	-	-	-	-	-	-	0,720	0,717	0,925	<b>0,925</b>
<i>Ptychostomum variabilis</i>	-	-	-	-	0,644	0,555	0,645	0,913	0,710	0,215	0,915	<b>0,006**</b>
<i>Proptychostomum commune</i>	-	-	-	-	-	-	-	-	0,182	0,590	0,904	<b>0,367</b>
<i>Proptychostomum simplex</i>	-	-	-	-	0,498	0,817	0,705	0,335	0,936	0,424	0,842	<b>0,589</b>
<i>Preptychostomum microstomum</i>	-	-	-	-	0,503	0,181	0,303	0,876	0,674	0,687	0,619	<b>0,117</b>

\* : correlation is significant at the 0.05 level ; \*\* : correlation is significant at the 0.01 level ; - : no value ; NO<sub>3</sub><sup>-</sup> : nitrates ; NO<sub>2</sub><sup>-</sup> : nitrites ; NH<sub>4</sub><sup>+</sup> : ammonium ; PO<sub>4</sub><sup>3-</sup> : orthophosphates



## Correlation between abundance of ciliates and ion concentrations

Table 2 displays the relationship between the ciliate abundance and ion concentrations of the three portions of the digestive tract of their host. In the foregut, a positive and significant correlation was found between the abundance of the *Paracoelophrya ebebdensis* and  $\text{PO}_4^{3-}$  ( $P < 0.05$ ). In the midgut, a positive and significant correlation was observed between the number of the ciliates *Dicoelophrya mediovacuolata*; *Coelophrya roquei*; *Coelophrya ovaes*; *Ptychostomum commune* and  $\text{NO}_2^-$  ( $P < 0.05$ ); *Almophrya mediovacuolata* and  $\text{NH}_4^+$  ( $P < 0.05$ ). In this same compartment, a positive and highly significant correlation was also observed between the abundance of *Ptychostomum prolixus* and  $\text{NO}_2^-$  ( $P < 0.01$ ). In the hindgut, a positive and highly significant correlation was found between the values of  $\text{PO}_4^{3-}$  and *Ptychostomum variabilis* abundance ( $P < 0.01$ ).

## DISCUSSION

The ionic concentration in  $\text{NO}_3^-$  decreased gradually from foregut to hindgut. This gradual decrease might be related to the presence of denitrifying and fermentable bacteria in the digestive tract of the worm (Wüst *et al.*, 2011). This observation was previously reported on the oligochaeta *Lumbricus rubellus*, *Lumbricus terrestris*, and *Aporrectodea caliginosa* by Depkat-Jakob *et al.*, (2010), Karsten & Drake (1997), Horn *et al.*, (2003, 2006) and Wüst *et al.*, (2009). These various authors highlighted the role of denitrifying bacteria in the digestive tract of Oligochaeta in general. The strong ionic concentrations in  $\text{NO}_2^-$ ,  $\text{PO}_4^{2-}$  and  $\text{NH}_4^+$ , obtained in midgut could be explained by fact that there would be first of all, an accumulation of minerals, then their assimilation. Our results corroborate those of de Puytorac & Mauret (1956) who worked on the oligochaeta *Allolobophora savignyi* and *Lumbricus herculeus*. Moreover, Maluf in 1940 revealed that the maximum ionic concentration in chloride, sulfate, calcium, potassium, and sodium, was obtained in midgut of the digestive tract of worms. The variation of ionic concentrations along the digestive tract of *A. emini* could be also related to frequency of use of ions by ciliates that colonized each portion of the digestive tract of the earthworm. Astomes might use few amount of  $\text{NO}_3^-$ , compared to Hysterocinetidae that would have great need for it. These parameters could be influenced by conditions of the surrounding medium and physiological state of the worm as reported by Lavelle & Spain (2001). In the digestive tract of *A. emini*, Astomatia (*Almophrya bivacuolata*; *Almophrya mediovacuolata*; *Almophrya laterovacuolata*; *Metaracoelophrya intermedia*; *Coelophrya ebebdensis*; *Coelophrya roquei*; *Coelophrya ovaes*, and *Paracoelophrya intermedia*) proliferated in the foregut where  $\text{NO}_3^-$  concentration was elevated. On the other hand, hindgut, less rich in ions, was populated by Hysterocinetidae (*Ptychostomum prolixus*; *Ptychostomum commune*; *Ptychostomum macrostomum*; *Ptychostomum elongatum*; *Ptychostomum variabilis*; *Proptychostomum commune*, and *Proptychostomum simplex*).

Let us retain that the variation of density is not only ensuing of the activity of ciliates of the digestive tract of earthworms. Brito-Vega & Espinosa-Victoria (2009) described the variation

of abundance of the bacteria along the digestive tract of the worms. Gohre (1943) highlighted a similar ensuing of activity of three species of Gregarines of genus *Gregarina*, parasites of larva of insect *Tenebrio molitor*. The cohabitation between Astomes and Hysterocinetidae in midgut confirms the theory of "the association of the species" (Pinel-Alloul *et al.*, 1990). The stratification of the species might depend obviously on various physico-chemical and biotic conditions, successively offered by the biological environment to ciliates species, according to needs of each one of them. We could ask ourselves whether in such stratification does not intervene, in addition to external medium itself, a competition among the various genera. If there is such an antagonism in the case of ciliates, its importance does not appear considerable under normal conditions. Indeed, when one of the species has suddenly missed, the place it was occupying in the portion of the digestive tract remains generally free. These observations do not exclude the possibility of such a competition originally of the settlement of digestive tract of worms. The various ions of medium do not have an equal importance. The importance of each one of them depends on organisms or group of organisms considered. It is function of more or less large sensitivity that this organism expresses with amplitude of the variations that these factors undergo. In the case as of endocommensal ciliates of *A. emini*, each parameter would have certainly an essential and paramount action. The greatest concentration of cells of each species seems to occur at level of digestive tract extremities; except for some species known as tolerant, gathered in buffer zone. Each one of these species is probably more sensitive to quality of products present in the medium and to their respective content, than to their total quantity.

Variation of ion contents and abundance of ciliate along the digestive tract of earthworms suggests that passage of soil in digestive tract would influence not only physical and chemical properties of soil, but also its microbial biomass, as was proposed previously suggested Fischer *et al.*, 1995, 1997; Houjian *et al.*, 2002 and Depkat-Jakob *et al.*, (2010). The density of soil nematodes, protozoa and coliformes also changes after its transit through the intestine of the epigeic earthworms, providing further evidence in favor of this hypothesis (Monroy *et al.*, 2007). Falling into the line, the passage of soil through the digestive tract of earthworms could stimulate (Brito-Vega and Espinosa-Victoria 2009) or inhibit (Byzov *et al.*, 2007) the growth of microorganisms and mineralizing bacteria.

## Conclusion

Our data shows that some correlation was found between the abundance of ciliates and the ionic concentration in the different portions of digestives tract of *A. emini*. The stratification of Astomatia and Hysterocinetidae along the digestive tract of *A. emini* is influenced by its ionic contents. The importance of various parameters of the medium differs and depends on the particular organism or a group of organisms (its sensitivity to the particular factor) and the amplitude of variations these factors undergo. In the case of endocommensal ciliates of *A. emini*, each ion has certainly an essential and primordial action. The greatest concentration of cells of each group (Astomatia and Hysterocinetidae) seems to

occur in the fore and the hindgut, respectively. Nevertheless, relative abundance of specimens of these two groups can be observed in the midgut, qualified as a buffer medium, where tolerant species occur. Each of these species is probably more sensitive to the quality and quantity of the ion present in the medium. It would be necessary to consider in further works the predation, rate of oxygen, osmotic pressure, specific enzymes, bacteria and viruses in the digestive tract of *A. emini*.

## REFERENCES

- Albaret J.L. 1975. Etude systématique et cytologique sur les Ciliés Hétérotriches endocommensaux. *Mémoire du Muséum National d'Histoire Naturelle*, série A, Zoologie, Tome LXXXIX, 89 p.
- Albaret J.L. and Njiné T. 1975. Description de cinq espèces nouvelles de Ciliés hétérotriches des genres *Metanyctotherus* Albaret, *Pronyctotherus* n. gen. Et *Plagiotoma* Dujardin, endocommensaux d'oligochètes du Cameroun. *Protistologica*, 11 (3) : 305–311.
- Bouché M.B. 1972. Lombriciens de France: Ecologie et Systématique. INRA Ann. Zool. Ecol. Anim. Publication, France, 671 p.
- Bouché M.B. 1977. Stratégies lombriciennes. In: Lohm, U. et Persson, T. (eds), Soil organism as components of ecosystems. *Biol. Bull.* (Stockolm), pp 122-132.
- Brito-Vega H. and Espinosa-Victoria D. 2009. Bacterial Diversity in the Digestive Tract of Earthworms (Oligochaeta). *Journal of Biological Sciences*, 9: 192-199.
- Byzov B.A., Khomyakov N.V., Kharin S.A. and Kurakov A.V. 2007. Fate of soil bacteria and fungi in the gut of earthworms. *Eur. J. Soil Biol.*, 43: 146-156.
- Darwin C. 1881. The formation of vegetable mould through the action of worms with observations on their habits. *Murray*, 298 p.
- Depkat-Jakob P.S., Hilgarth M., Horn M.A. and Drake H.L. 2010. Effect of Earthworm Feeding Guilds on Ingested Dissimilatory Nitrate Reducers and Denitrifiers in the Alimentary Canal of the Earthworm, *Applied and Environmental microbiology*. 76 (18): 6205-6214.
- Fischer K., Dittmar H., Wolfgang H. and Zeyer J. 1997. Effect of passage through the gut of the earthworm *Lumbricus terrestris* L. on *Bacillus megaterium* studied by whole cell hybridization, *Soil Biol. Biochem.* 29: 1149-1152.
- Fischer K., Hahn D., Amann R.L., David O. and Zeyer J. 1995. In situ analysis of the bacterial community in the gut of the earthworm *Lumbricus terrestris* L. by whole-cell hybridization, *Can. J. Microbiol.* 41: 666-673.
- Fokam Z., Ngassam P., Boutin C. and Zébazé Togouet S.H. 2008. Trois espèces nouvelles de *Coelophrya*, Ciliés Astomes endocommensaux d'*Alma nilotica* (Oligochète terricole) du Cameroun. *Bull. Soc. Hist. Nat. Toulouse*, 144: 27-33.
- Fokam Z., Ngassam P., Nana P.A., Bricheux G., Bouchard P. and Sime-Ngando T. 2012. Révision de la Sous – Famille des Metaracoelophryinae de Puytorac, 1972 (Oligohymenophora: Hoplytophryida: Hoplytophryidae), Ciliés Astomes du tube digestif d'Oligochètes terricoles d'Afrique: description de cinq espèces nouvelles. *Parasite*, 19: 41-52.
- Fokam Z., Ngassam P., Strüder-Kypke M.C. and Lynn D.H. 2011. Genetic diversity and phylogenetic position of the subclass Astomatia (Ciliophora) based on a sampling of six genera from West African oligochaetes (Glossoscolecidae, Megascolecidae), including description of the new genus *Paraclaasilocola* n. gen. *Eur. J. Protistol.* 47: 161-171.
- Gohre E. 1943. Untersuchungen über den plasmatischen Feinbau der Gregarinen mit besonderer Berücksichtigung der Sexualitätsverhältnisse. *Arch. F. Protist.*, 96, 295 p.
- Horn M.A., Mertel R., Kastner M., Gehre M. and Drake H.L. 2006. In vivo emission of dinitrogen by earthworms via denitrifying bacteria in the gut. *Appl. Environ. Microbiol.* 72: 1013–1018.
- Horn M.A., Schramm A. and Drake H.L. 2003. The earthworm gut: an ideal habitat for ingested  $N_2O$  producing microorganisms. *Appl. Environ. Microbiol.* 69: 1662–1669.
- Houjian C., Zarda B., Geoffrey R.M., Schonholzer F. and Dittmar H. 2002. Fate of Protozoa transiting the digestive tract of the earthworm *Lumbricus terrestris* L., *Pedobiologia*. 46: 161-175.
- Jégou D., Brunotte J., Rogasik H., Capowicz Y., Diestel H., Schrader S. and Cluzeau, D. 2002. Impact of soil compaction on earthworm burrow systems using X-ray computed tomography: preliminary study. *Eur. J. Soil Biol.*, 38: 329-336.
- Jégou D., Cluzeau D., Hallaire V., Balesdent J. and Trehen P. 2000. Borrowing activity of the earthworms *Lumbricus terrestris* and *Aporrectodea giardi* and consequences on C transfers in soil. *Eur. J. Soil Biol.*, 36: 27-34.
- Karsten G.R. and Drake H.L. 1997. Denitrifying bacteria in the earthworm gastrointestinal tract and in vivo emission of nitrous oxide ( $N_2O$ ) by earthworms. *Appl. Environ. Microbiol.*, 63: 1878–1882.
- Lavelle P. 1997. Faunal activities and soil processes: adaptive strategies that determine ecosystem function. *Adv. Ecol. Res.*, 27: 93-132.
- Lavelle P. and Spain A.V. 2001. Soil Ecology. *Kluwer Scientific Publications*, 654 p
- Maluf N.S.R. 1940. Osmo and volume regulation in the earthworm with special reference to the alimentary tract. *J. Cell. Comp. Physiol.*, 16, 175 p.
- Monroy F., Aira M. and Dominguez J. 2007. Changes in density of nematodes, protozoa and total coliforms after transit through the gut of four epigeic earthworms (Oligochaeta), *applied soil ecology*, 39: 127-132.
- Ngassam P. 1983. Trois espèces nouvelles de ciliés Astomes des genres : *Almophrya* de Puytorac et Dragesco, 1968, *Maupasella* Cépède, 1910, *Njinella* nov. genre, endocommensaux d'Annélides oligochètes de la région de Yaoundé. *Potistologica*, 19 (1) : 131-135.
- Ngassam P. and Grain J. 1997. Six espèces nouvelles d'Hysteroecinetidae appartenant aux deux genres nouveaux *Metaptychostomum* et *Proptychostomum*, Ciliés endocommensaux d'un Oligochète terricole du Cameroun. *Annales des Sciences naturelles, Zoologie*, Paris, 13<sup>e</sup> Série, 18 : 41-49.
- Ngassam P. and Grain J. 2000. Contribution to the study of Hysteroecinetidae Ciliates of the Genus *Ptychostomum*. Description of six new Species. *Europ. J. Protistol.*, 36: 285-292.
- Ngassam P., Grain J. and Njiné T. 1993. Contribution à l'étude des Ciliés Hysteroecinetidae : le genre *Preptychostomum* de Puytorac, 1993. *Annale Sciences Naturelle, Zoologie*, Paris, 13<sup>e</sup> série, 14 : 127-135.



- Njiné T. and Ngassam P. 1993. Morphogenèse de bipartition de deux espèces de Ciliés Hysterocinetidae du genre *Ptychostomum* Stein, 1890, endocommensaux d'Oligochètes Glossoscolecidae. *Euro. J. Protistol.*, 29: 396-406.
- Pinel-Alloul B., Methot G., Verreault G. and Vigneault Y. 1990. Zooplankton species associations in Quebec lakes: variation with abiotic factors, including natural and anthropogenic acidification. *Can. J. Fish. Aqua. Sci.*, 47 : 110-121.
- Puytorac P. de 1968. Structure et ultrastructure de quatre nouvelles espèces de Ciliés Hysterocinetidae Diesing, *Protistologica*, 4 : 453-467.
- Puytorac P. de 1969. Nouvelles espèces de Ciliés Astomes endoparasites d'Oligochètes Megascolecidae. *Bull. Soc. Hist. Nat. Toulouse*, 30 : 79-95.
- Puytorac P. de and Dragesco J. 1969a. Quatre espèces nouvelles de Ciliés Astomes chez les *Alma emini* (Mchlsn) (Ver Ciodrilina) du Gabon. *Annale Stat. Biologie Besse-en-chandesse*, 3 : 259-266.
- Puytorac P. de and Dragesco J. 1969b. Description de six genres nouveaux de Ciliés Astomes Hoplitophryidae endoparasites de vers Glossoscolecidae au Gabon. *Biologie Gabon*, T., 5 (1): 5-27.
- Puytorac P. de and Mauret P. 1956. Détermination de certaines des conditions écologiques propres aux différents Ciliés parasites du tube digestif d'*Allolobophora savignyi* (Oligochètes). *Bulletin Biologique de la France et de la Belgique*, tome XC, 2 : 123-141.
- Sims R.W. and Gerard B.M. 1999. Earthworm. FSC, Publication, London, 167p.
- Wüst P.K., Horn M.A. and Drake H.L. 2009. In situ hydrogen and nitrous oxide as indicators of concomitant fermentation and denitrification in the alimentary canal of the earthworm *Lumbricus terrestris*. *Appl. Environ. Microbiol.* 75:1852-1859.
- Wüst P.K., Horn M.A. and Drake H.L. 2011. *Clostridiaceae* and *Enterobacteriaceae* as active fermenters in earthworm gut content. *ISME J.* 5:92-106.

\*\*\*\*\*