



HAL
open science

Which geodesic flows are left-handed ?

Pierre Dehornoy

► **To cite this version:**

Pierre Dehornoy. Which geodesic flows are left-handed?. Groups, Geometry, and Dynamics, 2018, 10.4171/ggd/431 . hal-01102467v2

HAL Id: hal-01102467

<https://hal.science/hal-01102467v2>

Submitted on 27 Sep 2017

HAL is a multi-disciplinary open access archive for the deposit and dissemination of scientific research documents, whether they are published or not. The documents may come from teaching and research institutions in France or abroad, or from public or private research centers.

L'archive ouverte pluridisciplinaire **HAL**, est destinée au dépôt et à la diffusion de documents scientifiques de niveau recherche, publiés ou non, émanant des établissements d'enseignement et de recherche français ou étrangers, des laboratoires publics ou privés.

WHICH GEODESIC FLOWS ARE LEFT-HANDED ?

PIERRE DEHORNOY

ABSTRACT. We prove that the geodesic flow on the unit tangent bundle to a hyperbolic 2-orbifold is left-handed if and only if the orbifold is a sphere with three cone points. As a consequence, on the unit tangent bundle to a 3-conic sphere, the lift of every finite collection of closed geodesics is a fibered link.

1. INTRODUCTION

Left-handed flows are a particular class of non-singular 3-dimensional flows on rational homology spheres introduced by Étienne Ghys [Ghy09]. This topological property roughly means that every pair of periodic orbits has negative linking number. It implies that every finite collection of periodic orbits bounds a so-called Birkhoff section (*i.e.*, a global section with boundary) for the flow, and therefore forms a fibered link. In short, a left-handed flow can be written as an almost-suspension flow in as many ways as one can hope. The first examples of left-handed flows are the Seifert flows on \mathbb{S}^3 and the Lorenz flow (although the second is not strictly speaking left-handed because of its fixed points). This gives an alternative proof that all torus links and all Lorenz links are fibered [BW83, Thm. 5.2].

A natural question is then to look for other examples of left-handedness and to wonder whether such flows are abundant. The geodesic flow on the unit tangent bundle to any 2-dimensional sphere whose curvature is everywhere close to 1 is also left-handed [Ghy09]. This gives infinitely many examples of non-conjugated left-handed flows. The geodesic flow on the unit tangent bundle to the modular surface $\mathbb{H}^2/\mathrm{PSL}_2(\mathbb{Z})$ gives another example since its periodic orbits are isotopic to periodic orbits of the Lorenz flow [Ghy07, §3.5]. The cases of the almost-round spheres and of the modular surface lead to

Question 1.1 (Ghys). Which geodesic flows are left-handed?

The goal of this article is to give a complete answer in the negatively curved case. Strictly speaking, the unit tangent bundle to an orientable Riemannian surface is a 3-dimensional homology sphere if and only if the surface is a 2-sphere. But geodesic flows are naturally defined on a larger class, namely on 2-dimensional orbifolds, that is, surfaces locally modeled on a Riemannian disc or on the quotient of a disc by a finite rotation

Date: December 26th, 2014, corrected October 1st, 2016.

2010 Mathematics Subject Classification. 57M27, 37D40 (primary), and 37C27, 37D45, 57M20, 38B10, 37E35 (secondary).

Key words and phrases. chirality, hyperbolic surface, knot, geodesic flow, Anosov flow, Markov partition, fibered knot, open book decomposition.

Many thanks to Étienne Ghys for raising the question addressed in this article and for numerous conversations. This article was written during a one-semester visit at the Laboratoire J.-V. Poncelet (CNRS UMI-2615) in Moscow. I thank the laboratoire and the CNRS for their support.

group—the so-called *cone points* of the 2-orbifold (we restrict our attention here to orientable 2-orbifolds). In this larger class the unit tangent bundle is always a 3-manifold and it is a rational homology sphere if and only if the 2-orbifold is a 2-sphere with a finite number, say n , of cone points—what we now call an **n -conic 2-sphere** (see Lemma 2.1 below). An n -conic 2-sphere admits a negatively curved metric if and only if $n \geq 3$ (in the case $n = 3$ the orders of the cone points have to satisfy the additional constraint $\frac{1}{p} + \frac{1}{q} + \frac{1}{r} < 1$ and in the case $n = 4$ the quadruple $(2, 2, 2, 2)$ is prohibited). Since the geodesic flows associated to different negatively curved metrics are all topologically conjugated [Gro76], one can speak of *the* geodesic flow on a hyperbolic n -conic 2-sphere. Our main result is

Theorem A. *Let Σ be a hyperbolic n -conic 2-sphere. Then for $n = 3$ the geodesic flow on $T^1\Sigma$ is left-handed and for $n \geq 4$ the geodesic flow is neither left-handed nor right-handed.*

From the point-of-view of left-handedness, Theorem A contains good and bad news. Good news is that it provides infinitely many new examples of left-handed flows on infinitely many different 3-manifolds. Bad news is that the answer to Question 1.1 is not as simple as one could hope. Indeed, a particular case of Theorem A was proven in [Deh15], namely that the geodesic flow on a 3-conic 2-sphere with cone points of order $2, 3, 4g + 2$ is left-handed. Also a historical construction of Birkhoff [Bir17] (generalized by Brunella, see [Bru94, description 2]) implies that many collections of periodic orbits of the geodesic flow bound a surface that intersects negatively any other orbit of the geodesic flow, hence have negative linking number with any other periodic orbit. (The collections having this property are those that are symmetric, *i.e.*, such that if they contain the lift of an oriented geodesic they also contain the lift of the geodesic with the opposite orientation, and whose projections on the surface induce a checkerboard coloring of the complement.) Thus the most optimistic conjecture was that the geodesic flow on *any* hyperbolic n -conic 2-sphere is left-handed [Deh15, Question 1.2]. Our present result states that this conjecture is false when the sphere has at least four cone points.

As mentioned before, left-handedness implies that, in the complement of every finite collection of periodic orbits, there is a global section for the flow. This global section is a surface whose boundary is a multiple of the considered collection of periodic orbits: it is a *Birkhoff section* for the flow [Fri83, Ghy09]. Near the boundary of this surface, the flow induces a first-return map that is close to a rotation. If there is no multiplicity (*i.e.*, if the boundary of the section is exactly the considered collection of periodic orbits), then the first-return map is close to the identity near the boundary. Therefore we get an open book decomposition of the underlying 3-manifold (see [Rol76, Etn06]). This restriction on the multiplicity is achieved exactly when the integral homology class of the collection of periodic orbits is zero. Hence Theorem A directly implies

Corollary B. *For $\Sigma_{p,q,r}$ a 3-conic 2-sphere with hyperbolic metric, the lift in $T^1\Sigma_{p,q,r}$ of every finite collection of oriented geodesics on $\Sigma_{p,q,r}$ whose class is zero in $H_1(\Sigma_{p,q,r}; \mathbb{Z})$ is the binding of an open book decomposition of $T^1\Sigma_{p,q,r}$.*

Since $T^1\Sigma_{2,3,7}$ is an integral homology sphere, Corollary B implies that every collection of orbits of the geodesic flow in $T^1\Sigma_{2,3,7}$ is the binding of an open book decomposition.

The proof of Theorem A has two independent parts. The first part consists in proving that the geodesic flow on a hyperbolic n -conic 2-sphere with $n \geq 4$ is not left-handed. For this it is enough to find pairs of periodic orbits with linking number of arbitrary sign, and we do it by using an elementary construction. The second part is more difficult and consists in proving that any two periodic orbits of the geodesic flow on a hyperbolic 3-conic 2-sphere has negative linking number. Our proof heavily relies on the main result of [DeP16] where we constructed a *template* with two ribbons for the geodesic flow on every 3-conic 2-sphere. Using this template, we estimate the linking number of every pair of orbits, and prove that it is always negative.

The plan follows the above scheme: in Section 2, we recall the necessary definitions, in particular what are *geodesic flows* (§ 2.a) and *left-handed flows* (§ 2.c). We prove the $n \geq 4$ -part of Theorem A in § 2.d. In § 2.f we present the template for the geodesic flow on a hyperbolic 3-conic 2-sphere constructed in [DeP16]. Section 3 then contains the proof of the $n = 3$ -part of Theorem A.

CONTENTS

1. Introduction	1
2. Preliminaries	3
2.a. Orbifolds, unit tangent bundles, and geodesic flows	3
2.b. Linking number in homology spheres	4
2.c. Left-handed and Anosov flows	5
2.d. 2-spheres with at least four cone points	6
2.e. The template $\mathcal{T}_{p,q,r}$ and its extremal orbits	7
2.f. Computing linking numbers in $T^1\mathbb{H}^2/G_{p,q,r}$	9
3. Main computation	11
3.a. Proof of Theorem A in the case $p, q, r \geq 3$	11
3.b. Reducing to a finite number of estimations	12
3.c. Estimating $\text{lk}(a^i b^j, a^{i'} b^{j'})$	15
3.d. Estimating $\text{lk}((a^{p-1}b)^k a^i b^j, (a^{p-1}b)^{k'} a^{i'} b^{j'})$	17
3.e. Some additional computations	19
3.f. Proof of Theorem A in the case $p = 2$	20
4. Conclusion: the quest of a Gauss linking form	21
References	21

2. PRELIMINARIES

2.a. Orbifolds, unit tangent bundles, and geodesic flows. A **2-dimensional orientable orbifold** is a topological surface equipped with a metric that is locally isometric to the quotient of a Riemannian disc by a finite-order rotation group. It is **hyperbolic** if the metric has everywhere negative curvature. The **type** of the orbifold is $(g; p_1, \dots, p_n)$, where g is the genus of the underlying surface and p_1, \dots, p_n are the orders of the cone points of the orbifold.

The unit tangent bundle T^1D to a disc D equipped with a Riemannian metric is the set of tangent vector of length 1, hence it is homeomorphic to the solid torus $D \times S^1$. If a finite group $\mathbb{Z}/k\mathbb{Z}$ acts by rotations on D , then it acts faithfully on T^1D . The quotient $T^1D/(\mathbb{Z}/k\mathbb{Z})$ is then a 3-manifold. Actually it is also a solid torus which admits a Seifert fibration whose fibers are the fibers of the points of $D/(\mathbb{Z}/k\mathbb{Z})$.

The **unit tangent bundle to a 2-dimensional orbifold** is the 3-manifold that is locally modeled on the quotient of the unit tangent bundle to a Riemannian disc by a finite-order rotation group. So it is a Seifert fibered space.

Lemma 2.1. *The unit tangent bundle to an orientable 2-orbifold Σ of type $(g; p_1, \dots, p_n)$ is a rational homology sphere if and only if $g = 0$.*

Proof. If Σ is not a topological 2-sphere, it contains a nonseparating simple closed curve. The lift of this curve in $T^1\Sigma$ yields a non-trivial element of $H_1(T^1\Sigma; \mathbb{Q})$. So if $T^1\Sigma$ is a homology 3-sphere, then Σ is a topological 2-sphere.

Conversely, if Σ is of type $(0; p_1, \dots, p_n)$ its unit tangent bundle is the Seifert fibered space with presentation $(Oo0 \mid 2-n; (p_1, 1), \dots, (p_n, 1))$ in the notation of [Mon87, p. 140] (see p. 183 for a proof). By [Sav02, p. 4] it is a \mathbb{Q} -homology sphere. \square

Remark 2.2. We can also use [Sav02, p. 4] to see that $T^1\Sigma_{0;p_1, \dots, p_n}$ can be a \mathbb{Z} -homology sphere only for $n = 3$. Indeed, the order of $H_1(T^1\Sigma_{0;p_1, \dots, p_n}; \mathbb{Z})$ is $|(n-2)p_1 \dots p_n - \sum_i p_1 \dots \hat{p}_i \dots p_n|$. The condition $|(n-2)p_1 \dots p_n - \sum_i p_1 \dots \hat{p}_i \dots p_n| = 1$ then implies that the p_i 's must be pairwise coprime and, by the pigeonhole principle, that one of them must be smaller than $\frac{n}{n-2}$. For $n = 3$, we find the two solutions $(2, 3, 5)$ —which corresponds to Poincaré dodecahedral space—and $(2, 3, 7)$. For $n \geq 4$, these conditions cannot be fulfilled. So Theorem A concerns only one integral homology sphere.

Thurston showed [Thu80] that an orientable 2-orbifold of type $(0; p_1, \dots, p_n)$ admits a hyperbolic metric if and only if $n \geq 5$ or $n = 4$ and $(p_1, \dots, p_4) \neq (2, 2, 2, 2)$ or $n = 3$ and $\frac{1}{p_1} + \frac{1}{p_2} + \frac{1}{p_3} < 1$. In this case the orbifold is covered by the hyperbolic plane and it is isometric to $\mathbb{H}^2/G_{p_1, \dots, p_n}$ for some Fuchsian group G_{p_1, \dots, p_n} .

For every unit tangent vector to \mathbb{H}^2 , there exists a unique geodesic oriented by this tangent vector, so that every point of $T^1\mathbb{H}^2$ can be written in a unique way in the form $(\gamma(0), \dot{\gamma}(0))$ where γ is a geodesic travelled at speed 1. The **geodesic flow** φ on $T^1\mathbb{H}^2$ is then defined by $\varphi^t(\gamma(0), \dot{\gamma}(0)) := (\gamma(t), \dot{\gamma}(t))$. Since every Fuchsian group G acts by isometries on \mathbb{H}^2 , we can define the geodesic flow on $T^1\mathbb{H}^2/G$ by modding out. The important property for our purpose is that an orbit of the geodesic flow is the lift of an oriented geodesic, and therefore that periodic orbits of the geodesic flow are lifts of oriented closed geodesics.

2.b. Linking number in homology spheres. Given two disjoint oriented closed curves γ_1, γ_2 in a closed 3-manifold whose rational homology classes are trivial (in particular any disjoint closed curves if M is a rational homology sphere), their **linking number** $\text{lk}_M(\gamma_1, \gamma_2)$ is defined as the intersection number of γ_1 with a (rational) 2-chain bounded by γ_2 . It is a rational number whose denominator divides the order of the torsion part of $H_1(M; \mathbb{Z})$. The nullity of $[\gamma_1] \in H_1(M; \mathbb{Q})$ implies that this intersection number does not depend on the choice of the 2-chain. The same definition extends for γ_1, γ_2 two homologically trivial finite collections of oriented closed curves.

Example 2.3. Assume that Σ is a genus g -surface with $g \geq 2$ and f_1, f_2 are the trigonometrically oriented fibers of two generic points x_1, x_2 . Since $\chi(\Sigma)$ is non-zero, there exists a vector field Y_1 on Σ with only one singularity and we can assume that this singularity is at x_1 . By the definition of Euler characteristics, the singularity has index $\chi(\Sigma)$. So Y_1 lifts in $T^1\Sigma$ to a 2-chain whose boundary is $-\chi(\Sigma) f_1$. This implies that f_1 is homologically trivial. Moreover, since the lift of Y_1 has intersection $+1$ with any other generic fiber, in particular with f_2 , we have $\text{lk}_{T^1\Sigma}(-\chi(\Sigma)f_1, f_2) = +1$, and $\text{lk}_{T^1\Sigma}(f_1, f_2) = -1/\chi(\Sigma)$.

When Σ is any orientable 2-orbifold we also have $\text{lk}_{T^1\Sigma}(f_1, f_2) = -1/\chi(\Sigma)$. The proof is similar, except that we have to consider a multivalued vector field.

2.c. Left-handed and Anosov flows. We now recall the notion of *left-handed flow*, based on [Ghy09]. The reader in a hurry can directly take Lemma 2.5 as a definition, since it is all we need in the sequel.

Roughly speaking, a 3-dimensional flow in a \mathbb{Q} -homology sphere is left-handed if all pairs of periodic orbits are negatively linked. However taking this as a definition would produce some strange results as, for example, a flow with no periodic orbit would be left-handed. The precise definition actually involves invariant measures, which can be seen as generalizations of periodic orbits (indeed a periodic orbit induces a canonical invariant measure: the linear Dirac measure whose support coincide with the periodic orbit). Invariant measures form a non-empty convex cone.

A **Gauss linking form** on a \mathbb{Q} -homology sphere M is a $(1, 1)$ -form on $C(2, M)$ —the configuration space of pairs of disjoint points— whose integral on the product of two disjoint curves gives their linking number. Gauss linking forms always exist (Gauss gave the first example on \mathbb{R}^3 , see also [DTG13] for explicit examples on \mathbb{S}^3 and \mathbb{H}^3 and [Les15] for a construction on an arbitrary \mathbb{Q} -homology sphere). Given a vector field X on M , the linking number of two X -invariant measures μ, μ' not charging the same periodic orbits is then defined by $\text{lk}_{M,X}(\mu, \mu') := \iint \omega(X(x), X(y))d\mu(x)d\mu(y)$, where ω is any diffuse Gauss linking form (the integral always converges).

Definition 2.4. [Ghy09] A non-singular vector field X on a \mathbb{Q} -homology sphere M is **left-handed** if for every invariant measures μ, μ' not charging the same periodic orbits we have $\text{lk}_{M,X}(\mu, \mu') < 0$.

Our goal here is not to paraphrase [Ghy09]. Let us just repeat that left-handed flows have very nice topological properties. In particular every finite collection of periodic orbits forms a fibered link whose fiber surfaces are Birkhoff sections for the flow (*i.e.*, intersect every orbit with a bounded first-return time).

In general the space of invariant measures of a vector field is huge (infinite dimensional) and hard to determine. However when X is of Anosov type —as in particular the geodesic flow on a negatively curved 2-orbifold— left-handedness reduces to a property of periodic orbits. The reason is the shadowing property, namely that every invariant measure is the weak limit of a sequence of (Dirac measures supported by) periodic orbits.

Lemma 2.5. [Deh15, Lemma 2.1] *A non-singular Anosov vector field X on a \mathbb{Q} -homology sphere is left-handed if and only if every pair of periodic orbits of X has negative linking number.*

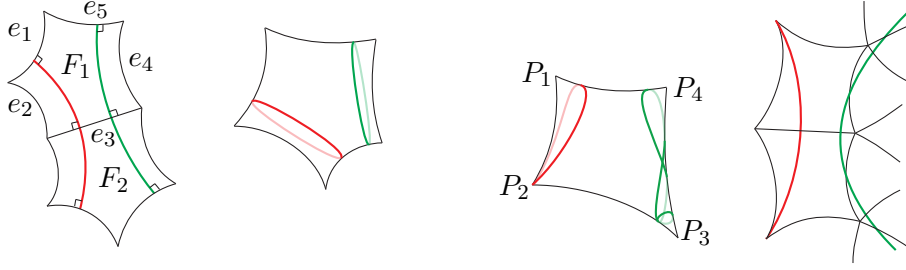


FIGURE 1. Two non-intersecting geodesics on $\mathbb{H}^2/G_{p_1, \dots, p_n}$ for $n > 4$ on the left and $n = 4$ on the right (on this picture all corners but the bottom left have odd order).

2.d. 2-spheres with at least four cone points. We now prove the elementary part of Theorem A, namely that the geodesic flow on $T^1\mathbb{H}^2/G_{p_1, \dots, p_n}$ is neither left-handed nor right-handed for $n \geq 4$. Since the geodesic flows corresponding to different hyperbolic metrics on the same orbifold are topologically conjugated, we can choose our preferred metric. We then choose the metric so that $\mathbb{H}^2/G_{p_1, \dots, p_n}$ is the union of two n -gons F_1, F_2 in \mathbb{H}^2 with angles $\pi/p_1, \dots, \pi/p_n$ glued along their boundaries. The polygons F_1, F_2 have n vertices P_1, \dots, P_n and are then images one from the other in a mirror (see Fig. 1).

Lemma 2.6. *With the above metric, there exists two periodic geodesics on $\mathbb{H}^2/G_{p_1, \dots, p_n}$ that do not intersect.*

Proof. For $n \geq 5$ (see Fig. 1 left), it is enough to choose five consecutive sides e_1, \dots, e_5 of F_1 , to consider s_1 the shortest segment connecting e_1 to e_3 and s_2 the shortest segment connecting e_3 to e_5 . The two segments s_1, s_2 do not intersect on F_1 and their symmetric do not intersect on F_2 as well. The union of s_1 with its symmetric on F_2 yields a closed geodesic on $\mathbb{H}^2/G_{p_1, \dots, p_n}$ that does not intersect the union of s_2 with its symmetric on F_2 .

For $n = 4$, we have to refine the idea (see Fig. 1 right). We will find two disjoint closed geodesics g_{12}, g_{34} which are close to the sides of P_1P_2 and P_3P_4 respectively. First suppose that the orders p_1 and p_2 are both even, then the side P_1P_2 actually supports a closed geodesics that we choose for g_{12} . Now if p_1 is odd and p_2 is even, there is a geodesic starting at P_2 and winding $\frac{p_1-1}{2}$ times around P_1 before coming back to P_2 , and then makes the trip in the opposite direction (as along P_1P_2 on Fig. 1 right). We choose it for g_{12} . Finally if p_1, p_2 are both odd, then there is a closed geodesic that starts on the edge P_1P_2 , winds $\frac{p_1-1}{2}$ times around P_1 , comes back to its initial point, then winds $\frac{p_2-1}{2}$ around P_2 and comes back to its initial points with its initial direction (as along P_3P_4 on Fig. 1 right). We choose it for g_{12} . Applying the same strategy for g_{34} we check that, since g_{12} stays close to P_1P_2 and g_{34} stays close to P_3P_4 , they do not intersect. (Of course, the same strategy works also for $n \geq 5$, but we had an easier construction in that case.) \square

Proof of Theorem A for $n \geq 4$. Consider γ_1, γ_2 two non-intersecting closed geodesics on $\mathbb{H}^2/G_{p_1, \dots, p_n}$ (they exist by Lemma 2.6). Denote by $\overleftrightarrow{\gamma}_1$ the set in $T^1\mathbb{H}^2/G_{p_1, \dots, p_n}$ of those unit vectors that are tangent to γ_1 regardless of the orientation, we call it the **symmetric lift** of γ_1 . It is a 2-component link if γ_1 does not visit a cone point of even order, and a knot otherwise. Now consider the set $S_{\overleftrightarrow{\gamma}_1}$ of all unit tangent vectors based on points

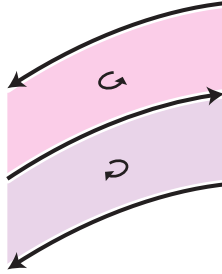


FIGURE 2. The surface $S_{\overleftrightarrow{\gamma}_1}$ consists of two annuli. Its oriented boundary is $2\overleftrightarrow{\gamma}_1$.

of γ_1 (see Fig. 2). This is the union of two immersed annuli that we orient so that the boundary of the integral 2-chain $S_{\overleftrightarrow{\gamma}_1}$ is $2\overleftrightarrow{\gamma}_1$. Since $S_{\overleftrightarrow{\gamma}_1}$ lies only in the fibers of the point of $\overleftrightarrow{\gamma}_1$ and since γ_2 does not intersect γ_1 , the intersection of $\overleftrightarrow{\gamma}_2$ with $S_{\overleftrightarrow{\gamma}_1}$ is empty. Therefore $\text{lk}_{\mathbb{T}^1\mathbb{H}^2/G_{p_1,\dots,p_n}}(\overleftrightarrow{\gamma}_1, \overleftrightarrow{\gamma}_2) = 0$. □

Remark 2.7. The reader may be frustrated that in the above proof we exhibited only pairs of periodic orbits with linking number zero and not with positive linking number. Actually, this is only to simplify the presentation. Indeed, if γ_1, γ_2 are two disjoint oriented geodesics on $\mathbb{H}^2/G_{p_1,\dots,p_n}$, then $\overrightarrow{\gamma}_1$ is homologous in the complement of $\overrightarrow{\gamma}_2$ to the multiple of some fibers, say $\lambda_1 f_1$, and similarly $\overrightarrow{\gamma}_2$ is homologous to some $\lambda_2 f_2$. Since the linking number of two regular fibers is $-1/\chi$, we have $\text{lk}_{\mathbb{T}^1\mathbb{H}^2/G_{p_1,\dots,p_n}}(\overrightarrow{\gamma}_1, \overrightarrow{\gamma}_2) = -\lambda_1 \lambda_2 / \chi$. In the proof of Theorem A, we had chosen the geodesics γ_1, γ_2 so that $\lambda_1 = \lambda_2 = 0$. By adding some winding around the cone points, we can make λ_1, λ_2 arbitrarily large in the positive or in the negative direction, keeping γ_1 and γ_2 disjoint.

However, notice that if γ_1 and γ_2 intersect, the symmetry between positive and negative is broken, as intersection points add a negative contribution to the linking number (namely a J^- -move [Arn94] on γ_1 or γ_2 adds -1 to $\text{lk}_{\mathbb{T}^1\mathbb{H}^2/G_{p_1,\dots,p_n}}(\overrightarrow{\gamma}_1, \overrightarrow{\gamma}_2)$). This explains why linking numbers of lifts of long geodesics are likely to be negative.

2.e. The template $\mathcal{T}_{p,q,r}$ and its extremal orbits. Now we turn to orbifolds of type $\mathbb{H}^2/G_{p_1,p_2,p_3}$, that we prefer to denote by $\mathbb{H}^2/G_{p,q,r}$, and we denote by $\varphi_{p,q,r}$ the geodesic flow on $\mathbb{T}^1\mathbb{H}^2/G_{p,q,r}$. We first recall two results of [DeP16] that describe the isotopy class of all periodic orbits of $\varphi_{p,q,r}$.

Lemma 2.8. [DeP16, Prop. 2.4] *The unit tangent bundle $\mathbb{T}^1\mathbb{H}^2/G_{p,q,r}$ is obtained from \mathbb{S}^3 by surgeries of index $p-1, q-1, r-1$ on the three components of a positive Hopf link.*

A **template** (see [BW83, GHS97]) in a 3-manifold is an embedded branched surface made of finitely many rectangular ribbons that are glued along their horizontal sides in such a way that every gluing point is on the bottom side of at most one ribbon (but may be on the top side of several ribbons). A template is equipped with the vertical bottom-to-top flow on each rectangle. This is actually only a semi-flow since orbits in negative time are not uniquely defined when crossing a branching line. Given a labeling of the ribbons of

the template, the **code** of an orbit is the infinite sequence that describes the consecutive ribbons used by the orbit. The **kneading sequences** (see [dMvS93, HuS90]) are the codes of the leftmost and rightmost orbits of every ribbon. (Sometime [BW83, GHS97] it is required that the gluing map be Markovian, namely that the top side of every ribbon be glued to the union of the full bottom sides of several ribbons. Here we remove this condition, this is in a sense the price to pay for having a template with only two ribbons.)

Call $\mathcal{T}_{p,q,r}$ the template with two ribbons whose embedding in $\mathbb{T}^1\mathbb{H}^2/G_{p,q,r}$ is depicted on Figure 3, whose left and right ribbons are labelled by a and b respectively, and whose kneading sequences are the words u_L, u_R, v_L, v_R given by Table 1.

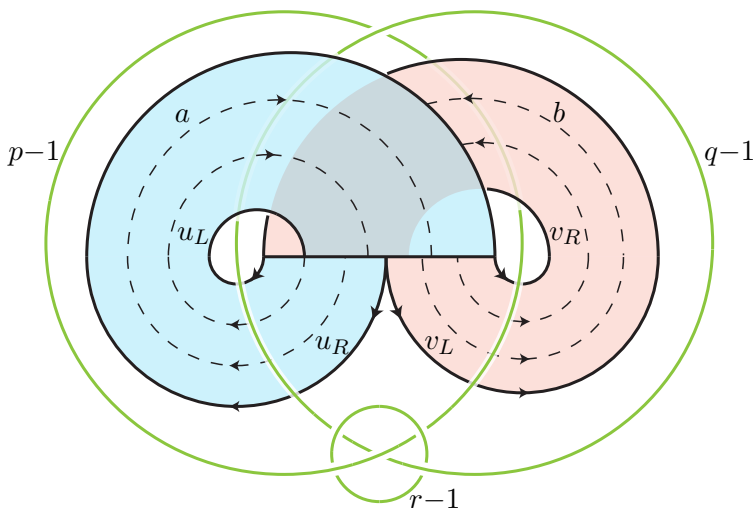


FIGURE 3. The template $\mathcal{T}_{p,q,r}$ in $\mathbb{T}^1\mathbb{H}^2/G_{p,q,r}$. The 3-manifold $\mathbb{T}^1\mathbb{H}^2/G_{p,q,r}$ is obtained from \mathbb{S}^3 by surgeries on a three-components Hopf link (green) with the given indices. The template $\mathcal{T}_{p,q,r}$ is characterized by its embedding in $\mathbb{T}^1\mathbb{H}^2/G_{p,q,r}$ and by the kneading sequences that describe the orbits of the extremities of the ribbons. In case r is infinite, $\mathbb{T}^1\mathbb{H}^2/G_{p,q,r}$ is the open manifold obtained by removing the bottommost component of the link. In the case $p = 2$, the exit side of the left ribbon is strictly included into the entrance side of the right ribbon.

Theorem 2.9. [DeP16, Theorem A] *Up to one exception, there is a one-to-one correspondence between periodic orbits of the geodesic flow $\varphi_{p,q,r}$ on $\mathbb{T}^1\mathbb{H}^2/G_{p,q,r}$ and periodic orbits of the template $\mathcal{T}_{p,q,r}$ such that its restriction to every finite collection is induced by an isotopy (which depends on the collection).*

The exception mentioned in the statement consists of two orbits of the template that correspond to the same orbit of the geodesic flow. In the sequel, we only need to consider the knots and links in $\mathcal{T}_{p,q,r}$ since our strategy is now to prove that any orbits of $\mathcal{T}_{p,q,r}$ have negative linking number in $\mathbb{T}^1\mathbb{H}^2/G_{p,q,r}$. The exception is therefore not a problem as we will just prove twice that a given orbit links negatively with all others.

	u_L	v_R
r infinite	$(a^{p-1}b)^\infty$	$(b^{q-1}a)^\infty$
$p, q, r > 2$		
r odd	$((a^{p-1}b)^{\frac{r-3}{2}} a^{p-1} b^2)^\infty$	$((b^{q-1}a)^{\frac{r-3}{2}} b^{q-1} a^2)^\infty$
r even	$((a^{p-1}b)^{\frac{r-2}{2}} a^{p-2} (ba^{p-1})^{\frac{r-2}{2}} b^2)^\infty$	$((b^{q-1}a)^{\frac{r-2}{2}} b^{q-2} (ab^{q-1})^{\frac{r-2}{2}} a^2)^\infty$
$p = 2, q > 2, r > 4$		
r odd	$((ab)^{\frac{r-3}{2}} ab^2)^\infty$	$b^{q-1} ((ab^{q-1})^{\frac{r-5}{2}} ab^{q-2})^\infty$
r even	$((ab)^{\frac{r-4}{2}} ab^2)^\infty$	$b^{q-1} ((ab^{q-1})^{\frac{r-4}{2}} ab^{q-2})^\infty$

$$v_L := bu_L,$$

$$u_R := av_R$$

TABLE 1. The kneading sequences of the template $\mathcal{T}_{p,q,r}$.

2.f. **Computing linking numbers in $T^1\mathbb{H}^2/G_{p,q,r}$.** Our goal is to estimate linking numbers of orbits of the template $\mathcal{T}_{p,q,r}$. The latter sits in $T^1\mathbb{H}^2/G_{p,q,r}$, but is depicted in \mathbb{S}^3 . Therefore we need a formula that gives the linking number after surgery in terms of information that can be read directly on Figure 3, namely the linking number before surgery and the linking numbers of the links with the different components of the Hopf link \mathcal{H}_3^+ . The next result provides such a formula. An analog statement holds in any two manifolds related by surgeries, but we prefer to state in the case which we are interested in. Denote by $\Delta_{p,q,r}$ the number $pqr - pq - qr - pr = pqr(1 - \frac{1}{p} - \frac{1}{q} - \frac{1}{r})$. It is the order of the group $H_1(T^1\mathbb{H}^2/G_{p,q,r}; \mathbb{Z})$. Denote by $Q'_{p,q,r}$ the bilinear form on \mathbb{R}^3 described by the matrix $\begin{pmatrix} qr-q-r & r & q \\ r & pr-p-r & p \\ q & p & pq-p-q \end{pmatrix}$.

Lemma 2.10 (Evolution of linking numbers). *For L_1, L_2 two disjoint links in \mathbb{S}^3 that are also disjoint from the Hopf link \mathcal{H}_3^+ , their linking number after performing surgeries of respective index $(p-1, q-1, r-1)$ on the components (H_1, H_2, H_3) of \mathcal{H}_3^+ is given by*

$$\text{lk}_{T^1\mathbb{H}^2/G_{p,q,r}}(L_1, L_2) = \text{lk}_{\mathbb{S}^3}(L_1, L_2) + \frac{1}{\Delta_{p,q,r}} Q'_{p,q,r} \left(\begin{pmatrix} \text{lk}_{\mathbb{S}^3}(L_1, H_1) \\ \text{lk}_{\mathbb{S}^3}(L_1, H_2) \\ \text{lk}_{\mathbb{S}^3}(L_1, H_3) \end{pmatrix}, \begin{pmatrix} \text{lk}_{\mathbb{S}^3}(L_2, H_1) \\ \text{lk}_{\mathbb{S}^3}(L_2, H_2) \\ \text{lk}_{\mathbb{S}^3}(L_2, H_3) \end{pmatrix} \right).$$

Proof. Let S_2 be a simplicial integral 2-chain in \mathbb{S}^3 bounded by $\Delta_{p,q,r}L_2$. After possibly canceling pairs of intersection points with different orientations by tunneling, we can assume that S_2 intersects each component H_i of the Hopf link in $|\text{lk}_{\mathbb{S}^3}(L_2, H_i)|$ points. Let $\nu(\mathcal{H}_3^+)$ be a tubular neighborhood of \mathcal{H}_3^+ . The boundary of S_2 in $\mathbb{S}^3 \setminus \nu(\mathcal{H}_3^+)$ is then made of $\text{lk}_{\mathbb{S}^3}(L_2, H_i)$ meridian circles on every component H_i .

Let D_1 be a punctured disc in $\mathbb{S}^3 \setminus \nu(\mathcal{H}_3^+)$ bounded by a longitude of H_1 , a meridian of H_2 and a meridian of H_3 . Define similarly D_2 and D_3 . For a_1, a_2, a_3 in \mathbb{Z} , the boundary of the 3-chain $a_1D_1 + a_2D_2 + a_3D_3$ then consists of a cycle of a_1 longitudes and $a_2 + a_3$ meridians of H_1 , a_2 longitudes and $a_1 + a_3$ meridians of H_2 , and a_3 longitudes and $a_1 + a_2$ meridians of H_3 .

The 2-chain $S_2 + a_1D_1 + a_2D_2 + a_3D_3$ can then be completed by adding meridian discs into a 2-chain \bar{S}_2 in $T^1\mathbb{H}^2/G_{p,q,r}$ whose boundary only consists of $\Delta_{p,q,r}L_2$ if and only if

the restriction of the boundary of $S_2 + a_1D_1 + a_2D_2 + a_3D_3$ to $\partial\nu(\mathcal{H}_3^+)$ consists of curves with slope $p-1$ on ∂H_1 (*resp.* $q-1$ on ∂H_2 , *resp.* $r-1$ on ∂H_3), so if and only if a_1, a_2, a_3 satisfy the system

$$\begin{aligned}\Delta_{p,q,r}\mathrm{lk}_{\mathbb{S}^3}(L_2, H_1) + a_2 + a_3 &= (p-1)a_1 \\ \Delta_{p,q,r}\mathrm{lk}_{\mathbb{S}^3}(L_2, H_2) + a_1 + a_3 &= (q-1)a_2 \\ \Delta_{p,q,r}\mathrm{lk}_{\mathbb{S}^3}(L_2, H_3) + a_1 + a_2 &= (r-1)a_3.\end{aligned}$$

Since $\begin{pmatrix} 1-p & 1 & 1 \\ 1 & 1-q & 1 \\ 1 & 1 & 1-r \end{pmatrix}^{-1} = \frac{-1}{\Delta_{p,q,r}} \begin{pmatrix} qr-q-r & r & q \\ r & pr-p-r & p \\ q & p & pq-p-q \end{pmatrix}$, the solution of the system is given by $\begin{pmatrix} a_1 \\ a_2 \\ a_3 \end{pmatrix} = \begin{pmatrix} qr-q-r & r & q \\ r & pr-p-r & p \\ q & p & pq-p-q \end{pmatrix} \begin{pmatrix} \mathrm{lk}_{\mathbb{S}^3}(L_2, H_1) \\ \mathrm{lk}_{\mathbb{S}^3}(L_2, H_2) \\ \mathrm{lk}_{\mathbb{S}^3}(L_2, H_3) \end{pmatrix}$.

Finally, the 1-chain L_1 intersects $\Delta_{p,q,r}\mathrm{lk}_{\mathbb{S}^3}(L_1, L_2)$ times S_2 , and $\mathrm{lk}_{\mathbb{S}^3}(L_1, H_i)$ times the disc D_i for every i , so its intersection with \bar{S}_2 is equal to

$$\Delta_{p,q,r}\mathrm{lk}_{\mathbb{S}^3}(L_1, L_2) + \sum_i a_i \mathrm{lk}_{\mathbb{S}^3}(L_1, H_i).$$

Dividing by $\Delta_{p,q,r}$ yields the desired formula. \square

Let us test the above formula on Example 2.3: the linking number between any two regular fibers of the unit tangent bundle $T^1\Sigma$ equals $-1/\chi(\Sigma)$ on any n -conic sphere Σ , so the linking number equals $\frac{pqr}{\Delta_{p,q,r}}$ when $\Sigma = \mathbb{H}^2/G_{p,q,r}$. In our presentation, two fibers of the unit tangent bundle correspond to two fibers of the Hopf fibration, thus have linking number $+1$ in \mathbb{S}^3 and $+1$ with every component of the Hopf link. By Lemma 2.10 their linking number is equal to $1 + \frac{1}{\Delta_{p,q,r}} Q'_{p,q,r}((1, 1, 1), (1, 1, 1)) = \frac{pqr}{\Delta_{p,q,r}}$ in $T^1\Sigma$, as expected.

Lemma 2.10 admits a simpler expression when it is applied to some orbits of the template $\mathcal{T}_{p,q,r}$. For γ an orbit of $\mathcal{T}_{p,q,r}$, denote by $\#_a\gamma$ and $\#_b\gamma$ the respective numbers of letters a and b in the code of γ . Denote by $Q_{p,q,r}$ the bilinear form on \mathbb{R}^2 given by the matrix

$$\begin{pmatrix} qr - q - r & -r \\ -r & pr - p - r \end{pmatrix}.$$

For γ, γ' two orbits of $\mathcal{T}_{p,q,r}$, denote by $\mathrm{cr}(\gamma, \gamma')$ their **crossing number** on $\mathcal{T}_{p,q,r}$, that is, the number of double points using the standard projection of the template (as in Fig. 3).

Lemma 2.11. *For γ, γ' two orbits of $\mathcal{T}_{p,q,r}$, one has*

$$(*) \quad \mathrm{lk}_{T^1\mathbb{H}^2/G_{p,q,r}}(\gamma, \gamma') = -\frac{1}{2}\mathrm{cr}(\gamma, \gamma') + \frac{1}{\Delta_{p,q,r}} Q_{p,q,r}((\#_a\gamma, \#_b\gamma), (\#_a\gamma', \#_b\gamma')).$$

Proof. Since all crossings on $\mathcal{T}_{p,q,r}$ are negative, one has $\mathrm{lk}_{\mathbb{S}^3}(\gamma, \gamma') = -\frac{1}{2}\mathrm{cr}(\gamma, \gamma')$. Also, one checks on Figure 3 that $\mathrm{lk}_{\mathbb{S}^3}(\gamma, H_1) = -\#_a\gamma$, $\mathrm{lk}_{\mathbb{S}^3}(\gamma, H_2) = \#_b\gamma$ and $\mathrm{lk}_{\mathbb{S}^3}(\gamma, H_3) = 0$.

Plotting these formulas into Lemma 2.10, we obtain

$$\begin{aligned}
\text{lk}_{\mathbb{T}^1\mathbb{H}^2/G_{p,q,r}}(\gamma, \gamma') &= -\frac{1}{2}\text{cr}(\gamma, \gamma') + \frac{1}{\Delta_{p,q,r}}Q'_{p,q,r}((- \#_a\gamma, \#_b\gamma, 0), (- \#_a\gamma', \#_b\gamma', 0)) \\
&= -\frac{1}{2}\text{cr}(\gamma, \gamma') + \frac{qr - q - r}{\Delta_{p,q,r}}(\#_a\gamma)(\#_a\gamma') - \frac{r}{\Delta_{p,q,r}}(\#_a\gamma)(\#_b\gamma') \\
&\quad - \frac{r}{\Delta_{p,q,r}}(\#_b\gamma)(\#_a\gamma') + \frac{pr - p - r}{\Delta_{p,q,r}}(\#_b\gamma)(\#_b\gamma') \\
&= -\frac{1}{2}\text{cr}(\gamma, \gamma') + \frac{1}{\Delta_{p,q,r}}Q_{p,q,r}((\#_a\gamma, \#_b\gamma), (\#_a\gamma', \#_b\gamma')).
\end{aligned}$$

□

3. MAIN COMPUTATION

In this section we prove the hard part of Theorem A, namely that the linking number of any two periodic orbits of $\mathcal{T}_{p,q,r}$ is negative. In Lemma 2.11, the term $-\frac{1}{2}\text{cr}(\gamma, \gamma')$ contributes with the desired sign to the linking number, whereas the second term contributes positively when, for example, γ and γ' contains only the letter a . We will see that this contribution is always compensated by the first term. However, this compensation only holds for the orbits of $\mathcal{T}_{p,q,r}$, not for two arbitrary words, so we will use in a crucial way the fact that $\mathcal{T}_{p,q,r}$ is a strict subtemplate of the Lorenz template. In particular, it is necessary that the orbits are balanced in the sense that the code of an orbit cannot contain only one letter.

The notion of concatenation of words plays a central role in our proof. For u, v two finite words, their **concatenation** uv is the word obtained by reading first u and then v . In our context the point is that if an infinite word w^∞ describes a periodic orbit on a Lorenz-like template and if w is long enough, then the finite word w may be decomposed as a concatenation $w = uv$ such that u^∞ and v^∞ also describe two periodic orbits of the same Lorenz-like template (Section 3.b below is hopefully self-contained, but one may also consult [GHS97, Section 3.1.2]). This phenomenon can be seen as a consequence of the existence of Markov partitions for Anosov flows [Rat73].

We first detail the scheme of the proof in the case $3 \leq p \leq q \leq r$ in § 3.a, and prove the needed lemmas in the next subsections. Finally in § 3.f we adapt the proof to the case $p = 2$. For simplicity, we now write lk instead of $\text{lk}_{\mathbb{T}^1\mathbb{H}^2/G_{p,q,r}}$.

3.a. Proof of Theorem A in the case $p, q, r \geq 3$. By Lemma 2.5 it is enough to prove that the linking number of every pair of periodic orbits of the geodesic flow on $\mathbb{T}^1\mathbb{H}^2/G_{p,q,r}$ is negative. By Theorem 2.9 it is then enough to prove that the linking number of every pair (γ, γ') of periodic orbits of the template $\mathcal{T}_{p,q,r}$ is negative.

The strategy is as follows. We use Equation (*) of Lemma 2.11. First we show that the expression $-\frac{1}{2}\text{cr}(\gamma, \gamma')$ behaves subadditively when concatenating words (Lemma 3.2). Since the form $Q_{p,q,r}$ behaves additively under concatenation, by Lemma 2.11, $\text{lk}(\gamma, \gamma')$ also behaves subadditively. For p, q, r fixed we can then restrict our attention to the set of extremal orbits, which are determined in Lemma 3.3: extremal orbits are encoded by the words $(a^{p-1}b)^k a^i b^j$ or $(ab^{q-1})^k a^i b^j$ with $(i, j, k) \in ([1, p-1] \times [1, q-1] \setminus \{(1, q-1), (p-1, 1)\}) \times [0, \frac{r-2}{2}]$, or $(a^{p-1}b)^k (ab^{q-1})^l$ for $(k, l) \in [1, \frac{r-2}{2}] \times [1, \frac{r-2}{2}]$.

We then show that the linking numbers of all pairs of such extremal orbits are negative. We cover all possibilities in four separate statements (the most critical case is covered by Lemma 3.7).

	$(a^{p-1}b)^k a^i b^j$	$(ab^{q-1})^k a^i b^j$	$(a^{p-1}b)^k (ab^{q-1})^l$
$(a^{p-1}b)^k a^i b^j$	Lemma 3.7	Lemma 3.8	Lemma 3.10
$(ab^{q-1})^k a^i b^j$		Lemma 3.7	Lemma 3.10
$(a^{p-1}b)^k (ab^{q-1})^l$			Lemma 3.9

The rest of the section is dedicated to proving these four lemmas. \square

Remark. For p, q, r fixed, Lemmas 3.7, 3.8, 3.9 and 3.10 are statements that involve finitely many computations only. On the one hand, the proofs we propose here are rather heavy and we are not fully satisfied with them. On the other hand, the crossing number of a pair of orbits of a Lorenz-type template is easy to compute, therefore, using Equation (*), the inequalities in the lemmas are easily checked. We did so into a Sage¹ worksheet available on our website². It took about 25 seconds on a laptop to check the validity of these lemmas for all $p \leq 4, q \leq 5, r \leq 7$ and about 2 hours for all $p \leq 6, q \leq 8, r \leq 10$.

3.b. Reducing to a finite number of estimations. The next two results of this section imply that for proving that any two orbits of $\mathcal{T}_{p,q,r}$ have negative linking number (p, q, r being fixed), it is enough to restrict our attention to an explicit finite list of orbits.

Definition 3.1. A **cut** of a finite word w in the alphabet $\{a, b\}$ is a pair of words u, v , called the **factors**, such that

- w is obtained by cyclic permutation of the letters of uv ,
- u and v end with the letters a and b respectively,
- u and v satisfy $u^\infty < v^\infty$,
- no shift of u^∞ or v^∞ lies between u^∞ and v^∞ in the lexicographic order.

A cut is **admissible** if the two factors code orbits of $\mathcal{T}_{p,q,r}$, that is, if all their shifts are between the kneading sequences given by Table 1.

Graphically, if w^∞ is the code of an orbit γ , a cut correspond suppressing from γ a corner of the bottom border of the diagram of γ (see Fig. 4).

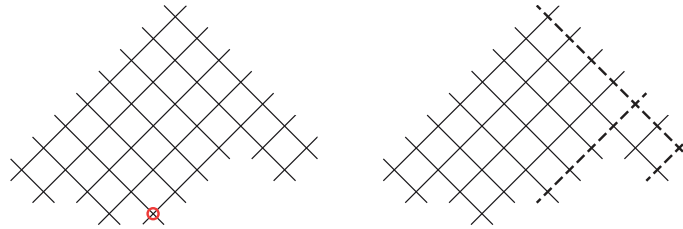


FIGURE 4. A cut of the word $aa|abb|abbababbab$ (on the left) creates the two new words $abbababbabaa$ and abb (on the right).

¹<http://www.sagemath.org>

²<https://www-fourier.ujf-grenoble.fr/~dehornop/maths/ComputationsLinkingTpqr.sws>

It may not be obvious how a cut could **not** be admissible. The point is that cutting an orbit creates two orbits, one which corresponds to a part of the original orbit and is moved slightly to the left, and the other one which is moved to the right. This moving could make one of the two new orbits exit the template.

By extension, for v, w two finite words, we denote by $\text{cr}(v^\infty, w^\infty)$ the crossing number of the two orbits of the Lorenz template that are coded by v^∞ and w^∞ . The key-property of cuts is

Lemma 3.2 (Superadditivity of the crossing number). *Assume that u, v are the factors of a cut. Then for every finite word x , we have*

$$\text{cr}((uv)^\infty, x^\infty) \geq \text{cr}(u^\infty, x^\infty) + \text{cr}(v^\infty, x^\infty).$$

Proof. Call an **(elementary) arc** a piece of orbit of the template delimited by two (consecutive) intersections points with the branching arc of the template. An elementary arc then corresponds to a letter of its code. The orbit coded by $(uv)^\infty$ is parallel and situated on the left of u^∞ for the first $|u|$ elementary arcs and then parallel and to the right of v^∞ for the next $|v|$ elementary arcs. Thus the correspondence between the letters of uv and the letters of u and v induces a canonical correspondence between elementary arcs of $(uv)^\infty$ and elementary arcs of u^∞ or of v^∞ . Call the **intermediate zone** the zone situated between the elementary arcs of $(uv)^\infty$ and the corresponding arcs of u^∞ or of v^∞ (in blue and green on Fig. 5).

First suppose that no arc of x^∞ travels in the intermediate zone. Then an elementary arc of x^∞ intersects an elementary arc of $(uv)^\infty$ if and only if it intersects the corresponding elementary arc of u^∞ or of v^∞ . Therefore we have $\text{cr}((uv)^\infty, x^\infty) = \text{cr}(u^\infty, x^\infty) + \text{cr}(v^\infty, x^\infty)$ in this case.

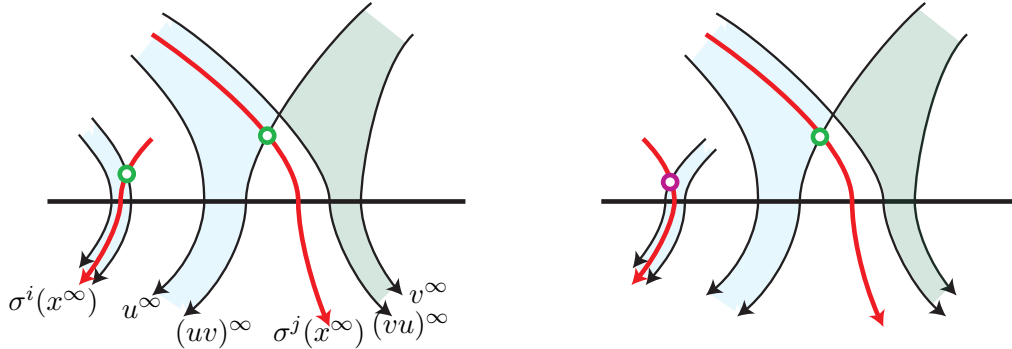


FIGURE 5. Proof of the superadditivity lemma: when an arc of x^∞ (in red) visits the region between u^∞ and $(uv)^\infty$ (in blue), either it crosses $(uv)^\infty$ twice and does not cross u^∞ (on the left), or it crosses both orbits once (on the right).

In the general case, an arc of x^∞ can only enter the intermediate zone by intersecting an arc of $(uv)^\infty$. If it exists the zone by intersecting an arc of u^∞ or v^∞ , then these two points are canonically associated. Otherwise it exits by cutting another arc of $(uv)^\infty$ and then we get two more intersection points with $(uv)^\infty$ than with the union of u^∞ and v^∞ . In both cases, the inequality holds. \square

Call a periodic orbit of the template $\mathcal{T}_{p,q,r}$ **extremal** if it has no admissible cut. Such extremal orbits correspond to the *elementary loops* of Fried [Fri82].

Lemma 3.3. *A periodic orbit of $\mathcal{T}_{p,q,r}$ is extremal if and only if its code is of the form $a^i b^j (a^{p-1} b)^k$ or $a^i b^j (ab^{q-1})^k$ with $(i, j, k) \in (\llbracket 1, p-1 \rrbracket \times \llbracket 1, q-1 \rrbracket \setminus \{(1, q-1), (p-1, 1)\}) \times \llbracket 0, \frac{r-2}{2} \rrbracket$, or $(a^{p-1} b)^k (ab^{q-1})^l$ for (k, l) in $\llbracket 1, \frac{r-2}{2} \rrbracket \times \llbracket 1, \frac{r-2}{2} \rrbracket$.*

Proof. Let γ be an extremal orbit and denote by w its code. By Theorem 2.9 and Table 1, the word w does not contain more than $p-1$ consecutive a and $q-1$ consecutive b . Also it does not contain more than $\frac{r-2}{2}$ consecutive blocks of the form $a^{p-1} b$ or ab^{q-1} .

First suppose that w contains no syllable of the form $a^{p-1} b$ or ab^{q-1} . Decompose the axis of the template into the union of segments, corresponding to orbits starting with $a^{p-1} b$, $a^{p-2} b, \dots, ab, ba, b^2 a, \dots, b^{q-2} a, b^{q-1} a$ (see Fig. 6). Now travel along γ starting from

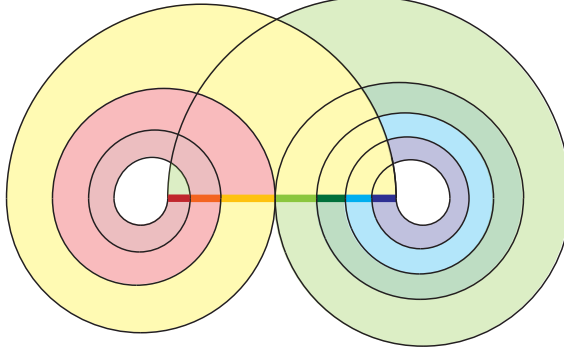


FIGURE 6. Division of the axis of $\mathcal{T}_{p,q,r}$ into segments corresponding to orbits starting with $a^3 b, a^2 b, ab, ba, b^2 a, b^3 a$, and $b^4 a$ here.

the leftmost point and consider the points where it intersects the axis of the template. By the hypothesis that γ is the leftmost orbit in the corresponding subsegment, then either γ is always the leftmost orbit of each of the visited subsegments, in which case γ comes back to its initial point after having visited at most once every subsegment, and in this case w is of the form $a^i b^j$. Or at some point γ stops being the leftmost orbit in the corresponding subsegment, which means that some arc comes from the right to pass over γ and sits just to the left of γ in the corresponding subsegment. This determines a place to cut γ . Since the two arcs that intersect at that cut are in the same subinterval, they correspond to letters of w that are followed by the same number of letters of the same type. Therefore cutting at this place amounts to factor $w = a^{i_1} b^{j_1} \dots a^{i_n} b^{j_n}$ into $a^{i_k} b^{j_k} \dots a^{i_l} b^{j_l}$ and $a^{i_{l+1}} b^{j_{l+1}} \dots a^{i_{k-1}} b^{j_{k-1}}$. These two words still encode orbits of the template, so the cut is admissible.

Now allow w to contain syllables of the form $a^{p-1} b$ or ab^{q-1} . We apply the same strategy for finding an admissible cut works, except that we have to forget about the blocks of the form $(a^{p-1} b)^k$ or $(ab^{q-1})^k$. Namely, we follow the orbit γ encoded by w starting from its leftmost point, but we consider only the relative place of γ in the corresponding subsegments when we are visiting syllables of the form $(a^{p-1} b)^k$ or $(ab^{q-1})^k$. One still finds

a cut. By our assumption, this cut takes place between two letters of γ not belonging to a syllable of the form $(a^{p-1}b)^k$ or $(ab^{q-1})^k$. \square

3.c. Estimating $\text{lk}(a^i b^j, a^{i'} b^{j'})$. Since any word can be decomposed as a product of syllables of the form $a^i b^j$, using the subativity of linking numbers (Lemma 3.2), it is enough for proving Theorem A to show that $\text{lk}(a^i b^j, a^{i'} b^{j'})$ is negative for all possible values of (i, j, i', j') . Unfortunately, this is not the case: using Lemma 2.11, one sees that $\Delta_{p,q,r} \text{lk}(a^{p-1} b, a^i b^j) = qi - jp$ and in particular we have $\text{lk}(a^{p-1} b, a^{p-1} b) = (pq - p - q)/\Delta_{p,q,r} > 0$. This formula is not a surprise since the code $a^{p-1} b$ actually corresponds to a $+2\pi/r$ -rotation around the order r -point of $\mathbb{H}^2/G_{p,q,r}$, hence the curve with code $(a^{p-1} b)^r$ is isotopic to a fiber, and we know that the linking number between two fibers is positive (by Example 2.3). However, the next two lemmas state that this situation is almost the only bad case.

Lemma 3.4 (easy case). *If $i < i', j < j'$, then $\text{lk}(a^i b^j, a^{i'} b^{j'})$ is negative.*

Proof. Figure 7 shows that we have $\text{cr}(a^i b^j, a^{i'} b^{j'}) = 2(i + j)$ in this case.

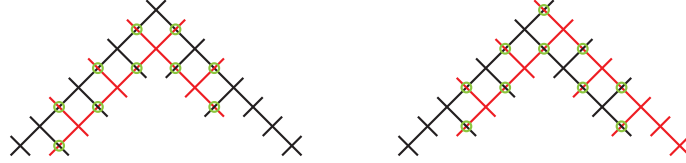


FIGURE 7. Crossing number between two orbits of codes $a^i b^j$ (red) and $a^{i'} b^{j'}$ (black), with $i < i', j < j'$ on the left and $i \leq i', j \geq j'$ on the right. The double points are encircled, they are $2(i + j)$ on the left and $2(i + j' - 1)$ on the right.

By Lemma 2.11, we have $\Delta_{p,q,r} \text{lk}(a^i b^j, a^{i'} b^{j'}) = -iqr(1 - \frac{1}{q} - \frac{1}{r} - \frac{j}{iq})(p - i') - jpr(1 - \frac{1}{p} - \frac{1}{r} - \frac{i}{jq})(q - j')$.

Suppose $i, j \geq 2$ and $(i, q, r), (j, p, r) \neq (2, 3, 4), (2, 3, 5)$. Since $j < q$, we have $\frac{j}{iq} < \frac{1}{i}$, and therefore $1 - \frac{1}{q} - \frac{1}{r} - \frac{j}{iq} > 1 - \frac{1}{q} - \frac{1}{r} - \frac{1}{i} \geq 0$. Since $i' < p$, the term $-iqr(1 - \frac{1}{q} - \frac{1}{r} - \frac{j}{iq})(p - i')$ is always negative. Similarly for the term $-jpr(1 - \frac{1}{p} - \frac{1}{r} - \frac{i}{jq})(q - j')$. Then $\text{lk}(a^i b^j, a^{i'} b^{j'})$ is the sum of two negative terms, hence is negative

If $i = 1$, since $j \leq q - 2$, we have $1 - \frac{1}{q} - \frac{1}{r} - \frac{j}{iq} = 1 - \frac{j+1}{q} - \frac{1}{r} \geq 1 - \frac{q-1}{q} - \frac{1}{r} = \frac{1}{q} - \frac{1}{r}$. Using the assumption $q \leq r$, we still have a non-positive term. The same holds for $j = 1$. Note that the equality holds only for $j = q - 2$ (resp. $i = p - 2$), therefore the sum can be equal to 0 only if $i = j = 1 = p - 2 = q - 2$ and $p = q = r$, which forces $p = q = r = 3$. These values do not correspond to a hyperbolic orbifold.

In the case $(i, q, r) = (2, 3, 4)$ or $(2, 3, 5)$, since $j < j' < q$, we necessarily have $j = 1, j' = 2$. In this case, an easy computation leads to $\Delta_{p,q,r} \text{lk}(a^i b^j, a^{i'} b^{j'}) = 6i' - 9p + 12$. Since $i' \leq p - 1$, we have $6i' - 9p + 12 \leq -3p + 6 < 0$. The case $(j, p, r) = (2, 3, 4)$ or $(2, 3, 5)$ is treated in the same way.

Therefore, for $i < i', j < j'$, we always have $\text{lk}(a^i b^j, a^{i'} b^{j'}) < 0$. \square

Lemma 3.5 (hard case). *If $i \leq i', j \geq j'$, then $\text{lk}(a^i b^j, a^{i'} b^{j'})$ is negative, except if $(i, j) = (1, q-1)$ or $(i', j') = (p-1, 1)$.*

Proof. Looking at Figure 7, we now have $\text{cr}(a^i b^j, a^{i'} b^{j'}) = 2(i + j' - 1)$.

Then $\Delta_{p,q,r} \text{lk}(a^i b^j, a^{i'} b^{j'}) = -[(qr - q - r)i - rj'](p - i') - [(pr - p - r)j' - ri](q - j) - r(i' - i)(j - j') + (pqr - pq - pr - qr)$. The expression is linear in the four variables i, j, i', j' .

In order to prove the lemma, we have to prove that on the extremal points of the region $D_{i,j,i',j'} := \{(i, j, i', j') \mid i \leq i', j \geq j'\} \setminus \{(1, q-1, *, *)\} \cup \{(*, *, p-1, 1)\}$, the number $\Delta_{p,q,r} \text{lk}(a^i b^j, a^{i'} b^{j'})$ is negative (a point of $D_{i,j,i',j'}$ being *not* extremal if it lies between two points of the domain that share 3 coordinates).

By linearity, for each value of (i, j) , the extremum is reached when (i', j') is one of the five points $(i, j), (i, 1), (p-2, 1), (p-1, 2), (p-1, j)$. By symmetry, we can restrict ourselves to the values $(i, j), (i, 1)$, and $(p-2, 1)$.

- *Case 1:* $(i', j') = (i, j)$. $\Delta_{p,q,r} \text{lk}(a^i b^j, a^{i'} b^{j'})$ is then equal to

$$(qr - q - r)i^2 + (pr - p - r)j^2 - 2rij - \Delta_{p,q,r}(i + j - 1).$$

Since the coefficients of i^2 and j^2 are positive, the maximum is reached on the boundary of the domain, hence we only have to check the points $(i, j) = (1, 1), (p-2, 1), (p-1, 2), (p-1, q-1), (2, q-1), (1, q-2)$. By symmetry, we can actually only consider $(1, 1)$ and $(p-2, 1)$.

- *Case 1.1:* $(i, j, i', j') = (1, 1, 1, 1)$. We have $\Delta_{p,q,r} \text{lk}(a^1 b^1, a^1 b^1) = -pqr + pq + 2pr + 2qr - p - q - 4r = -(p-2)(q-2)(r-2) - (p-3)(q-3) + 1$. The first term is always smaller than -1 , the second is non-positive, so the sum is negative.
- *Case 1.2:* $(i, j, i', j') = (p-2, 1, p-2, 1)$. We have $\Delta_{p,q,r} \text{lk}(a^{p-2} b^1, a^{p-2} b^1) = -pqr + 2pq + pr + 2qr - p - 4q - r = -(p-2)(q-2)(r-2) - (p-3)(r-3) + 1$, which is negative for the same reason as in Case 1.1.

- *Case 2:* $(i', j') = (i, 1)$. $\Delta_{p,q,r} \text{lk}(a^i b^j, a^{i'} b^1)$ is then equal to

$$(pr - p - r)i^2 - \Delta_{p,q,r}i + (pr - p - r)j - ri(j + 1).$$

Since the coefficient of i^2 is positive, the maximum is reached on the boundary of the domain, hence we only have to check the points $(i, j) = (1, 1), (p-2, 1), (p-2, q-1), (2, q-1), (1, q-2)$. (There is no more symmetry.)

- *Case 2.1:* $(i, j, i', j') = (1, 1, 1, 1)$. This case is similar to Case 1.1.
- *Case 2.2:* $(i, j, i', j') = (p-2, 1, p-2, 1)$. This case is similar to Case 1.2.
- *Case 2.3:* $(i, j, i', j') = (p-2, q-1, p-2, 1)$. We have $\Delta_{p,q,r} \text{lk}(a^{p-2} b^{q-1}, a^{p-2} b^1) = -pqr + pq + pr + 3qr + p - 4q - r = -(p-3)(q-1)(r-2) - (p-2)(q-3)$, which is the sum of two non-positive terms.
- *Case 2.4:* $(i, j, i', j') = (2, q-1, 2, 1)$. We have $\Delta_{p,q,r} \text{lk}(a^2 b^{q-1}, a^2 b^1) = -pqr + pq + pr + 3qr + p - 4q - r = -(p-3)(q-1)(r-2) - (p-2)(q-3)$, which is the sum of two non-positive terms.
- *Case 2.5:* $(i, j, i', j') = (1, q-1, 1, 1)$. We have $\Delta_{p,q,r} \text{lk}(a^1 b^{q-1}, a^1 b^1) = pr + 2p - q + 2r = -(p-2)(r-2) - q + 4$, which is negative.
- *Case 3:* $(i', j') = (p-2, 1)$. $\Delta_{p,q,r} \text{lk}(a^i b^j, a^{i'} b^1)$ is then equal to

$$-(qr - 2q - r)i + (r - p)j.$$

By linearity, we only have to check the points $(i, j) = (1, 1), (p-2, 1), (p-1, 2), (p-1, q-1), (2, q-1), (1, q-2)$.

- *Case 3.1:* $(i, j, i', j') = (1, 1, p-2, 1)$. This case is symmetric to Case 2.5.
- *Case 3.2:* $(i, j, i', j') = (1, q-2, p-2, 1)$. We have $\Delta_{p,q,r} \text{lk}(a^1 b^{q-2}, a^{p-2} b^1) = -pq + 2p + 2q - r = -(p-2)(q-2) - r + 4$, which is negative.
- *Case 3.3:* $(i, j, i', j') = (2, q-1, p-2, 1)$. We have $\Delta_{p,q,r} \text{lk}(a^2 b^{q-1}, a^{p-2} b^1) = -pq - qr + p + 4q + r = -(q-1)(p+r-4) + 4$, which is negative.
- *Case 3.4:* $(i, j, i', j') = (p-1, q-1, p-2, 1)$. We have $\Delta_{p,q,r} \text{lk}(a^{p-1} b^{q-1}, a^{p-2} b^1) = -pqr + pq + pr + 2qr + p - 2q - 2r = -(p-2)(q-1)(r-1) + 4$, which is negative.
- *Case 3.5:* $(i, j, i', j') = (p-1, 2, p-2, 1)$. We have $\Delta_{p,q,r} \text{lk}(a^{p-1} b^2, a^{p-2} b^1) = -pqr + 2pq + pr + qr - 2p - 2q + r = -(p-1)(q-1)(r-2) + 4$, which is negative.
- *Case 3.6:* $(i, j, i', j') = (1, q-1, 1, 1)$. This case is the same as Case 2.5. \square

3.d. Estimating $\text{lk}((a^{p-1}b)^k a^i b^j, (a^{p-1}b)^{k'} a^{i'} b^{j'})$. As we have seen, syllables of the form $a^{p-1}b$ may contribute positively to the linking number. However, using the information we have on the admissible codes, we know that there cannot be more than $\frac{r-2}{2}$ consecutive such syllables. By the subadditivity of the linking number and using the expression $\Delta_{p,q,r} \text{lk}(a^{p-1}b, a^i b^j) = qi - jp$, we have the inequality

$$\begin{aligned} \Delta_{p,q,r} \text{lk}((a^{p-1}b)^k a^i b^j, (a^{p-1}b)^{k'} a^{i'} b^{j'}) &\leq \Delta_{p,q,r} k k' \text{lk}(a^{p-1}b, a^{p-1}b) + \Delta_{p,q,r} k \text{lk}(a^{p-1}b, a^{i'} b^{j'}) \\ &\quad + \Delta_{p,q,r} k' \text{lk}(a^{p-1}b, a^i b^j) + \Delta_{p,q,r} \text{lk}(a^i b^j, a^{i'} b^{j'}) \\ &= k k' (pq - p - q) + k(qi' - pj') + k'(qi - jp) \\ &\quad + \Delta_{p,q,r} \text{lk}(a^i b^j, a^{i'} b^{j'}). \end{aligned}$$

Unfortunately, the term $\Delta_{p,q,r} \text{lk}(a^i b^j, a^{i'} b^{j'})$ is not always negative enough and cannot always compensate the three first terms. So we need a better control than the superadditivity lemma. The additional term $2 \min(k, k')$ in the next lemma will make the difference. By convention, for γ a periodic orbit of $\mathcal{T}_{p,q,r}$, we denote by $\text{cr}(\gamma, \gamma)$ twice the number of double points of γ (this is the crossing of γ with a copy of itself slightly translated along the template).

Lemma 3.6. *The crossing number $\text{cr}((a^{p-1}b)^k a^i b^j, (a^{p-1}b)^{k'} a^{i'} b^{j'})$ is at least equal to*

$$k k' \text{cr}(a^{p-1}b, a^{p-1}b) + k \text{cr}(a^{p-1}b, a^{i'} b^{j'}) + k' \text{cr}(a^{p-1}b, a^i b^j) + \text{cr}(a^i b^j, a^{i'} b^{j'}) + 2 \min(k, k').$$

Proof. Without loss of generality suppose $k \leq k'$ (if $k = k'$, also suppose $i \leq i'$, and if moreover $i = i'$ suppose $j \geq j'$). We make an induction on k . For $k = 0$, the result is a particular case of Lemma 3.2.

Now, consider the cut $(a^{p-1}b)^k a^{i'} b^{j'} = a^{p-1} \left| b (a^{p-1}b)^{k-1} a^{i'} b^{j'-1} \right| b$, whose factors are then $a^{p-1}b$ and $(a^{p-1}b)^{k-1} a^{i'} b^{j'}$ (after cyclic permutation). Note that this cut is not admissible since $a^{p-1}b$ does not lie on $\mathcal{T}_{p,q,r}$. However the statement only deals with crossing numbers on any Lorenz-type template, so that we can work on a Lorenz template with trivial kneading sequences a^∞ and b^∞ .

In the proof of Lemma 3.2 we introduced the intermediate zone and showed that the crossing number $\text{cr}((a^{p-1}b)^k a^i b^j, (a^{p-1}b)^{k'} a^{i'} b^{j'})$ exceeds the sum $\text{cr}(a^{p-1}b, (a^{p-1}b)^{k'} a^{i'} b^{j'}) + \text{cr}((a^{p-1}b)^{k-1} a^i b^j, (a^{p-1}b)^{k'} a^{i'} b^{j'})$ by twice the number of arcs of the orbit $(a^{p-1}b)^{k'} a^{i'} b^{j'}$ that enter the intermediate zone by crossing $(a^{p-1}b)^k a^i b^j$ (see Fig. 5 left). By the assumption $k \leq k'$, the leftmost point of $(a^{p-1}b)^{k'} a^{i'} b^{j'}$ is to the left of $(a^{p-1}b)^k a^i b^j$, so that there is one arc of $(a^{p-1}b)^{k'} a^{i'} b^{j'}$ that enters the left part of the intermediate zone by crossing $(a^{p-1}b)^k a^i b^j$. Also, by $k \leq k'$, there is an arc of $(a^{p-1}b)^{k'} a^{i'} b^{j'}$ situated between $b(a^{p-1}b)^{k-1} a^i b^{j'-1}$ and $b(a^{p-1}b)^{k-1} a^i b^{j'-1} a^{p-1}$, so that there is also one arc of $(a^{p-1}b)^{k'} a^{i'} b^{j'}$ that enters the right part of the intermediate zone by crossing $(a^{p-1}b)^k a^i b^j$. Therefore the number $\text{cr}((a^{p-1}b)^k a^i b^j, (a^{p-1}b)^{k'} a^{i'} b^{j'})$ exceeds $\text{cr}(a^{p-1}b, (a^{p-1}b)^{k'} a^{i'} b^{j'}) + \text{cr}((a^{p-1}b)^{k-1} a^i b^j, (a^{p-1}b)^{k'} a^{i'} b^{j'})$ by at least two. This concludes the induction step. \square

Lemma 3.7. *For $0 \leq k, k' \leq \frac{r-2}{2}$, the number $\text{lk}((a^{p-1}b)^k a^i b^j, (a^{p-1}b)^{k'} a^{i'} b^{j'})$ is negative.*

Proof. Without loss of generality, we assume $k \leq k'$. Thanks to Lemma 3.6, we have

$$\begin{aligned} \Delta_{p,q,r} \text{lk}((a^{p-1}b)^k a^i b^j, (a^{p-1}b)^{k'} a^{i'} b^{j'}) &= kk'(pq - p - q) + k(qi' - pj') + k'(qi - jp) \\ &\quad + \Delta_{p,q,r} \text{lk}(a^i b^j, a^{i'} b^{j'}) + k(-pqr + pq + pr + qr). \end{aligned}$$

This expression is linear in k, k' . Therefore it is enough to evaluate it for $(k, k') = (0, 0), (0, \frac{r-2}{2}),$ and $(\frac{r-2}{2}, \frac{r-2}{2})$.

- *Case 1:* $(k, k') = (0, 0)$. This corresponds to Lemmas 3.4 and 3.5.
- *Case 2:* $(k, k') = (0, \frac{r-2}{2})$. We have

$$\Delta_{p,q,r} \text{lk}(a^i b^j, (a^{p-1}b)^{\frac{r-2}{2}} a^{i'} b^{j'}) = (iq - jp)(r - 2)/2 + \Delta_{p,q,r} \text{lk}(a^i b^j, a^{i'} b^{j'}).$$

By subadditivity, the maximum is reached when (i, j) and (i', j') are extremal, that is, equal to $(1, 1), (p - 2, 1), (p - 1, 2), (p - 1, q - 1), (2, q - 1),$ or $(1, q - 1)$. In all cases except $(p - 2, 1)$ and $(p - 1, 2)$ the term $(iq - jp)(r - 2)/2$ is negative or clearly does not compensate the contribution of $\Delta_{p,q,r} \text{lk}(a^i b^j, a^{i'} b^{j'})$. Therefore, the maximum of $\text{lk}(a^i b^j, (a^{p-1}b)^{\frac{r-2}{2}} a^{i'} b^{j'})$, if positive, is reached for $(i, j, i', j') = (p - 1, 2, p - 1, 2), (p - 1, 2, p - 2, 1), (p - 2, 1, p - 1, 2),$ or $(p - 2, 1, p - 2, 1)$.

- *Case 2.1:* $(i, j, i', j') = (p - 1, 2, p - 1, 2)$. Then $\Delta_{p,q,r} \text{lk}(a^{p-1}b^2, (a^{p-1}b)^{\frac{r-2}{2}} a^{p-1}b^2) = (pq - 2p - q)(r - 2)/2 - pqr + 2pq + 2pr + qr - 4p - q - r = -((p - 1)(q - 2)(r - 2) - 2(q - 2))/2$, which is negative.
- *Case 2.2:* $(i, j, i', j') = (p - 1, 2, p - 2, 1)$. Then $\Delta_{p,q,r} \text{lk}(a^{p-1}b^2, (a^{p-1}b)^{\frac{r-2}{2}} a^{p-2}b^1) = (pq - 2p - q)(r - 2)/2 - pqr + 2pq + pr + qr - 2p - 2q + r = -((p - 1)q(r - 2) - 2r)/2$, which is negative.
- *Case 2.3:* $(i, j, i', j') = (p - 2, 1, p - 1, 2)$. Then $\Delta_{p,q,r} \text{lk}(a^{p-2}b^1, (a^{p-1}b)^{\frac{r-2}{2}} a^{p-1}b^2) = (pq - p - 2q)(r - 2)/2 - pqr + 2pq + pr + qr - 2p - 2q + r = -(p(q - 1)(r - 2) - 2r)/2$, which is negative.
- *Case 2.4:* $(i, j, i', j') = (p - 2, 1, p - 2, 1)$. Then $\Delta_{p,q,r} \text{lk}(a^{p-2}b^1, (a^{p-1}b)^{\frac{r-2}{2}} a^{p-2}b^1) = (pq - p - 2q)(r - 2)/2 - pqr + 2pq + pr + 2qr - p - 4q - r = -((p - 2)q(r - 2) + p + r)/2$, which is negative.

- *Case 3:* $(k, k') = (\frac{r-2}{2}, \frac{r-2}{2})$. We have

$$\begin{aligned} & \Delta_{p,q,r} \text{lk}((a^{p-1}b)^{\frac{r-2}{2}} a^i b^j, (a^{p-1}b)^{\frac{r-2}{2}} a^{i'} b^{j'}) \\ &= (-pqr + pr + qr + 2p + 2q + 2q(i + i') - 2p(j + j'))(r - 2)/2 \\ & \quad + \Delta_{p,q,r} \text{lk}(a^i b^j, a^{i'} b^{j'}) \end{aligned}$$

Since $i, i' \leq p-1, j, j' \geq 1$, we have $2q(i + i') - 2p(j + j') \leq 2(pq - p - q)$. Actually, since both (i, j) and (i', j') cannot be $(p-1, 1)$, we even have $2q(i + i') - 2p(j + j') \leq \max(4(pq - 2p - q), 4(pq - p - 2q))$. Since $\Delta_{p,q,r} \text{lk}(a^i b^j, a^{i'} b^{j'})$ is always negative (Lemmas 3.4 and 3.5), we have

$$\begin{aligned} & \Delta_{p,q,r} \text{lk}((a^{p-1}b)^{r/2} a^i b^j, (a^{p-1}b)^{r/2} a^{i'} b^{j'}) \\ & < (-pqr + 4pq + pr + qr - 6p - 2q - 4 \min(p, q))(r - 2)/2 \\ &= -(p-2)(q-2)(r-5) - (p-2)(r-5) - (q-2)(r-5) \\ & \quad - (p-3)(q-3) - 4 \min(p, q) + 9)(r - 2)/2 \end{aligned}$$

This last expression is clearly negative, for $r \geq 5$.

Since we assumed $p, q \leq r$, we are left with the cases $(p, q, r) = (3, 3, 4), (3, 4, 4)$ and $(4, 4, 4)$. We check directly that in the cases $(3, 3, 4)$ and $(4, 4, 4)$ the expression is actually negative. In the case $(3, 4, 4)$, the expression is equal to $+2$. Going through all cases of Lemmas 3.4 and 3.5, one checks that $\Delta_{p,q,r} \text{lk}(a^i b^j, a^{i'} b^{j'})$ is in this case always strictly smaller than -1 , so that $\Delta_{p,q,r} \text{lk}((a^{p-1}b)^k a^i b^j, (a^{p-1}b)^{k'} a^{i'} b^{j'})$ is always negative in this case. This concludes the proof. \square

3.e. Some additional computations. The other needed lemmas are easier.

Lemma 3.8. *For $k, k' \geq 1$, we have $\text{lk}((a^{p-1}b)^k a^i b^j, (ab^{q-1})^{k'} a^{i'} b^{j'}) < 0$.*

Proof. By Lemma 3.2, we have $\text{lk}((a^{p-1}b)^k a^i b^j, (ab^{q-1})^{k'} a^{i'} b^{j'}) \leq k \text{lk}(a^{p-1}b, (ab^{q-1})^{k'} a^{i'} b^{j'}) + \text{lk}(a^i b^j, (ab^{q-1})^{k'} a^{i'} b^{j'})$. By Lemma 3.7 the second term is negative, so we only have to show that $\text{lk}(a^{p-1}b, (ab^{q-1})^{k'} a^{i'} b^{j'})$ is negative. By Lemma 3.2, we have

$$\begin{aligned} \text{lk}(a^{p-1}b, (ab^{q-1})^{k'} a^{i'} b^{j'}) &\leq \text{lk}(a^{p-1}b, (ab^{q-1})^{k'}) + \text{lk}(a^{p-1}b, a^{i'} b^{j'}) \\ &= k'(-pq + p + q) + (qi' - pj') \\ &\leq -pq + p + q + qi' - pj' = q(i' - p + 1) + p(1 - j'). \end{aligned}$$

The latter expression is always negative. \square

Lemma 3.9. *For $k, l, k', l' \geq 1$, we have $\text{lk}((a^{p-1}b)^k (a^{p-1}b)^l, (ab^{q-1})^{k'} (a^{p-1}b)^{l'}) < 0$.*

Proof. Using the superadditivity Lemma 3.2 and the formula $\Delta_{p,q,r} \text{lk}(a^{p-1}b, a^i b^j) = qi - pj$, we get $\Delta_{p,q,r} \text{lk}((a^{p-1}b)^k (a^{p-1}b)^l, (ab^{q-1})^{k'} (a^{p-1}b)^{l'}) \leq (pq - p - q)(k - l)(k' - l')$, which is not always negative. So we need to add more precise information as we did with Lemma 3.6. Namely, when following the orbit with code $(a^{p-1}b)^k (a^{p-1}b)^l$, we roughly follow $a^{p-1}b$ for k iterations and then ab^{q-1} for l iterations. But when going from the first k blocks to the next l blocks, the orbit enters the intermediate zone, and actually crosses $\min(l, l')$ arcs of $(a^{p-1}b)^{k'} (a^{p-1}b)^{l'}$, namely those arcs that correspond to the last b in the first $\min(l, l')$ blocks of $(ab^{q-1})^{l'}$. Similarly, when the orbit goes from the the part $(ab^{q-1})^l$ to $(a^{p-1}b)^k$,

the corresponding orbit crosses $\min(k, k')$ arcs of $(a^{p-1}b)^{k'}(a^{p-1}b)^{l'}$. In this counting, one crossing is counted twice. Thus the additional contribution to $\text{lk}((a^{p-1}b)^k(a^{p-1}b)^l, (ab^{q-1})^{k'}(a^{p-1}b)^{l'})$ is $\min(k, k') + \min(l, l') - 1$. Then we have $\Delta_{p,q,r}\text{lk}((a^{p-1}b)^k(a^{p-1}b)^l, (ab^{q-1})^{k'}(a^{p-1}b)^{l'}) = (pq - p - q)(k - l)(k' - l') + (-pqr + pq + qr + pr)(\min(k, k') + \min(l, l') - 1)$.

The first term is positive if $k - l$ and $k' - l'$ are of the same sign. Without loss of generality we then assume $k \geq l, k' \geq l'$ and $k \geq k'$. Depending whether $l \geq l'$ or not, we have $\Delta_{p,q,r}\text{lk}((a^{p-1}b)^k(a^{p-1}b)^l, (ab^{q-1})^{k'}(a^{p-1}b)^{l'}) = (pq - p - q)(k - l)(k' - l') + (-pqr + pq + qr + pr)(k' + l' - 1)$ or $(pq - p - q)(k - l)(k' - l') + (-pqr + pq + qr + pr)(k' + l - 1)$. In both cases, the coefficients of k, k', l and l' are respectively positive, positive, negative and negative, so these expressions are maximal for $k = k' = \frac{r-2}{2}, l = l' = 1$. They are then both equal to $(pq - p - q)(\frac{r-4}{2})^2 + (-pqr + pq + qr + pr)\frac{r-2}{2}$. The latter expression is negative for $p, q \geq 3, r \geq 4$. \square

Lemma 3.10. *For $k \geq 0, k', l' \geq 1$, we have $\text{lk}((a^{p-1}b)^k a^i b^j, (a^{p-1}b)^{k'}(ab^{q-1})^{l'}) < 0$.*

Proof. First assume $k < k'$. Lemma 3.2 then yields $\text{cr}((a^{p-1}b)^k a^i b^j, (a^{p-1}b)^{k'}(ab^{q-1})^{l'}) \leq 2kk'(p-1) + 2kl + 2ik' + 2l'$. As in the previous proof, there is an additional term $2k + 2$ due to the fact that $b^j a^i$ inserts itself in the last block of $(a^{p-1}b)^{k'}(ab^{q-1})^{l'}$, so that we have $\text{cr}((a^{p-1}b)^k a^i b^j, (a^{p-1}b)^{k'}(ab^{q-1})^{l'}) = 2kk'(p-1) + 2kl + 2ik' + 2l' + 2k + 2$. We then obtain $\Delta_{p,q,r}\text{lk}(a^i b^j, (a^{p-1}b)^{k'}(ab^{q-1})^{l'}) = (k' - l')(k(pq - p - q) + qi - pj) - (k+1)\Delta_{p,q,r}$. The latter expression is linear in i, j, k, k', l' , and it is maximal for $i = p - 1, j = 1, k = 0, k' = \frac{r-2}{2}$ and $l = 1$. One checks that even in this case, it is negative.

Now assume $k \geq k'$. In this case the additional term is only $2k'$. Then we have $\text{cr}((a^{p-1}b)^k a^i b^j, (a^{p-1}b)^{k'}(ab^{q-1})^{l'}) = 2kk'(p-1) + 2kl + 2ik' + 2l' + 2k'$. and thus obtain $\Delta_{p,q,r}\text{lk}(a^i b^j, (a^{p-1}b)^{k'}(ab^{q-1})^{l'}) = (k' - l')(k(pq - p - q) + qi - pj) - k'\Delta_{p,q,r}$. This expression is linear in i, j, k, k', l' , and it is maximal for $i = p - 1, j = 1, k = \frac{r-2}{2}, k' = 1$ and $l' = 1$. Even in this case it is negative. \square

3.f. Proof of Theorem A in the case $p = 2$. First remark that, since the orbifold $\Sigma_{2,2q',r}$ has an order 2-covering by the orbifold $\Sigma_{q',q',r}$, left-handedness of the geodesic flow on $\mathbb{T}^1\Sigma_{2,2q',r}$ can be deduced from left-handedness of the geodesic flow on $\mathbb{T}^1\Sigma_{q',q',r}$ (see [Deh15, § 2.4]). Therefore the only case not covered by the analysis when $p \geq 3$ is the case that q and r are odd.

Lemma 3.2 being also valid in the case $p = 2$, it is enough to compute linking numbers between extremal orbits. The extremal orbits of Lemma 3.3 have to be replaced by the periodic orbits whose codes are of the form $ab^i(ab)^k$ or $ab^i(ab^{q-1})^k$ with $(i, k) \in \llbracket 2, q - 2 \rrbracket \times \llbracket 0, \frac{r-3}{2} \rrbracket$, or $(ab)^k(ab^{q-1})^l$ for (k, l) in $\llbracket 1, \frac{r-3}{2} \rrbracket \times \llbracket 1, \frac{r-3}{2} \rrbracket$. The technics of Lemma 3.7, 3.8, 3.9 and 3.10 can then be copied to prove that all linking numbers of pairs of extremal orbits are always negative (there are four cases again). Rather than detailing these proofs here, we refer to our Sage worksheet³ for numerical evidence. Also, the remark of § 3.a is valid here: our computations give a proof for all cases that we have computer-checked, here $q \leq 10, r \leq 14$.

³<https://www-fourier.ujf-grenoble.fr/~dehornop/maths/ComputationsLinkingTpqr.sws>

4. CONCLUSION: THE QUEST OF A GAUSS LINKING FORM

A classical way of computing linking numbers is *via* a linking form (see § 2.c). By Ghys Theorem [Ghy09] a vector field X on a 3-manifold M induces a left-handed flow if and only if there exists a linking form ω_M that is everywhere negative along X , *i.e.*, such that $\omega_M(X(x), X(y)) < 0$ for all x, y in M . Theorem A then implies the existence of such a negative linking form on $T^1\mathbb{H}^2/G_{p,q,r}$ for every hyperbolic 3-conic 2-sphere $\mathbb{H}^2/G_{p,q,r}$. It is then natural to wonder whether such a form is canonical or easy-to-construct. For example, can it be constructed using propagators [Les15]? or by integrating a canonical kernel [Kup08, DTG13]? However, the fact that such a negative Gauss form does not exist on $T^1\mathbb{H}^2/G_{p_1, \dots, p_n}$ for $n \geq 4$ could be discouraging.

Very recently the quest of such an explicit form has been carried out on $T^1\mathbb{T}^2$ by Adrien Boulanger [Bou17]. With his formulas it is then obvious that (almost) every null-homologous pair of collections of periodic orbits of the geodesic flow on $T^1\mathbb{T}^2$ have negative linking number, so that this flow is (almost) left-handed. This gives a proof of [Deh15, Thm B] that is more natural, as well as some hope to exhibit a natural Gauss form in the higher-genus case. The *almost* means that actually some linking numbers are zero, so that some peculiar collections do not form fibered links.

REFERENCES

- [Ano67] Dmitri V. ANOSOV, Geodesic flows on closed Riemannian manifolds with negative curvature, *Proc. Steklov Inst. Math.* **90** (1967), 235pp.
- [Arn94] Vladimir I. ARNOLD, Plane curves, their invariants, perestroikas and classifications, *Advances in Soviet Math.* **21** (1994), 33–91.
- [Bir17] George BIRKHOFF, Dynamical systems with two degrees of freedom, *Trans. Amer. Math. Soc.* **18** (1917), 199–300.
- [BW83] Joan S. BIRMAN and Robert F. WILLIAMS, Knotted periodic orbits in dynamical systems— I: Lorenz’s Equations, *Topology* **22** (1983), 47–82. (erratum at www.math.columbia.edu/~jwb/bw-KP0-I-erratum.pdf)
- [Bou17] Adrien BOULANGER, A spectral viewpoint of the linking form in the 3-torus, <http://arXiv.org/abs/1709.00874>
- [Bru94] Marco BRUNELLA, On the discrete Godbillon-Vey invariant and Dehn surgery on geodesic flow, *Ann. Fac. Sc. Toulouse Sér. 6* **3** (1994), 335–344.
- [dMvS93] Wellington DE MELO and Sebastian VAN STRIEN, *One-Dimensional Dynamics*, Springer (1993), 605pp.
- [Deh11] Pierre DEHORNOY, Invariants topologiques des orbites périodiques d’un champ de vecteur, PhD thesis, ÉNS Lyon (2011). www.theses.fr/2011ENSL0626.pdf
- [Deh15] Pierre DEHORNOY, Geodesic flow, left-handedness, and templates, *Algebr. Geom. Topology* **15** (2015), 1525–1597. <http://arXiv.org/abs/1112.6296>
- [DeP16] Pierre DEHORNOY and Tali PINSKY, Coding of geodesics and Lorenz-like templates for some geodesic flows, *Ergod. Theory Dynam. System* (2016, online), 1–21. <http://arXiv.org/abs/1411.6857>
- [DTG13] Dennis DETURCK and Hermann GLUCK, Linking, twisting, writhing and helicity on the 3-sphere and in hyperbolic 3-space, *J. Differential Geometry* **94** (2013), 87–128. <http://arxiv.org/abs/1009.3561>
- [Etn06] John B. ETNYRE, Lectures on open book decompositions and contact structures, *Clay Math. Proc.* **5** (“Floer Homology, Gauge Theory, and Low Dimensional Topology Workshop”) (2006), 103–141. <https://arxiv.org/abs/math/0409402>
- [Fri82] David FRIED, The geometry of cross sections to flows, *Topology* **21** (1982), 353–371.
- [Fri83] David FRIED, Transitive Anosov flows and pseudo-Anosov maps, *Topology* **22** (1983), 299–303.

- [GHS97] Robert W. GHRIST, Philip J. HOLMES, and Michael C. SULLIVAN, *Knots and links in three-dimensional flows*, Lect. Notes Math. **1654**, Springer (1997), viii+208 pp.
- [Ghy84] Étienne GHYS, Flots d'Anosov sur les 3-variétés fibrées en cercles, *Ergod. Theory Dynam. System* **4** (1984), 67–80.
- [Ghy07] Étienne GHYS, Knots and dynamics, *Proc. Internat. Congress of Mathematicians I*, Eur. Math. Soc. (2007), 247–277.
- [Ghy09] Étienne GHYS, Right-handed vector fields and the Lorenz attractor, *Japan. J. Math.* **4** (2009), 47–61.
- [Gro76] Mikhaïl GROMOV, Three remarks on geodesic dynamics and fundamental group, preprint SUNY (1976), reprinted in *Enseign. Math. (2)* **46** (2000), 391–402.
- [Had1898] Jacques HADAMARD, Les surfaces à courbures opposées et leurs lignes géodésiques, *J. Math. Pures Appl.* **4** (1898), 27–74.
- [HuS90] John H. HUBBARD and Colin T. SPARROW, The classification of topologically expansive Lorenz maps, *Comm. Pure Appl. Math.* **43** (1990), 431–443.
- [Kup08] Greg KUPERBERG, From the Mahler conjecture to Gauss linking integrals, *Geom. Funct. Anal.* **18** (2008), 870–892. <http://arxiv.org/abs/math/0610904>
- [Les15] Christine LESCOP, A formula for the Theta invariant from Heegaard diagrams, *Geom. Topol.* **19** (2015), 1205–1248. <http://arxiv.org/abs/1209.3219>
- [Lor63] Edward N. LORENZ, Deterministic nonperiodic flow, *J. Atmospheric Sci.* **20** (1963), 130–141.
- [Mil75] John MILNOR, On the 3-dimensional Brieskorn manifolds $M(p, q, r)$, in *Knots, groups, and 3-manifolds*, Papers dedicated to the memory of R. H. Fox (L. P. Neuwirth, ed.), Ann. of Math. Stud. **84** (1975), Princeton Univ. Press.
- [Mon87] José M. MONTESINOS, *Classical tessellations and three-manifolds*, Universitext, Springer (1987), 230pp.
- [Pin11] Tali PINSKY, Templates for the geodesic flow, *Ergod. Theory Dynam. System* **34** (2014), 211–235. <http://arxiv.org/abs/1103.4499>
- [Rat73] M. RATNER, Markov partitions for anosov flows on n -dimensional manifolds, *Israel J. Math.* **15** (1973), 92–114.
- [Rol76] Dale ROLFSEN, *Knots and links*, Publish or Perish (1976), 439pp.
- [Sav02] Nikolai SAVELEV, *Invariants for homology 3-spheres*, Encyclopedia of Mathematical Sciences (2002), Springer, xii+123 pp.
- [Thu80] William P. THURSTON, The geometry and topology of three-manifolds, Princeton lecture notes, unpublished (1980).

UNIV. GRENOBLE ALPES, CNRS, INSTITUT FOURIER, F-38000 GRENOBLE, FRANCE

E-mail address: pierre.dehornoy@univ-grenoble-alpes.fr

URL: <http://www-fourier.ujf-grenoble.fr/~dehornop/>