

Figure 1: Sample preparation and testing steps.

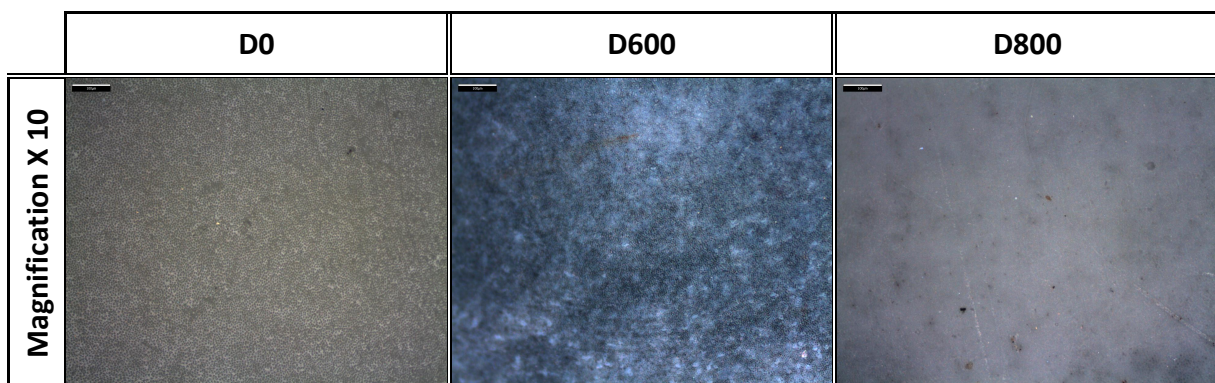


Figure 2: Optical microscopy images (magnification X10) of the specimens before (D0) and after HT (D600 and D800).

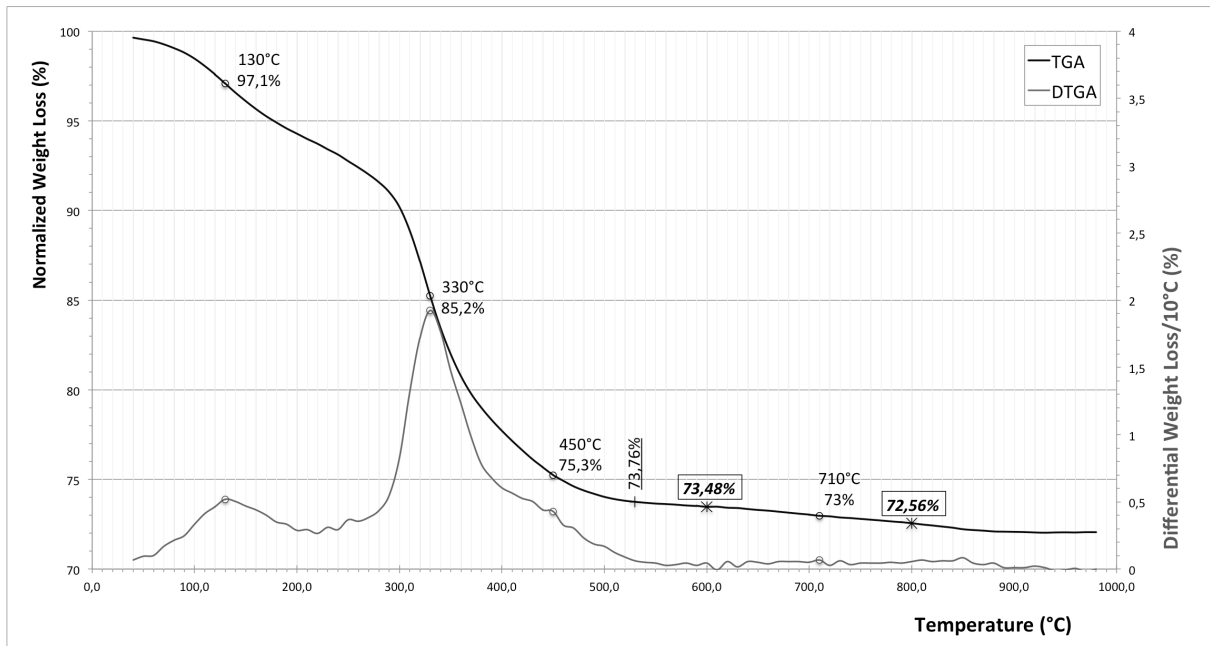


Figure 3 : Thermogravimetric analysis (TGA) data showing the weight loss of intact dentin (control group D0) as a function of temperature between 40°C and 1000°C. The negative of the first derivative (DTGA) (%/10°C) is also plotted as a function of temperature.

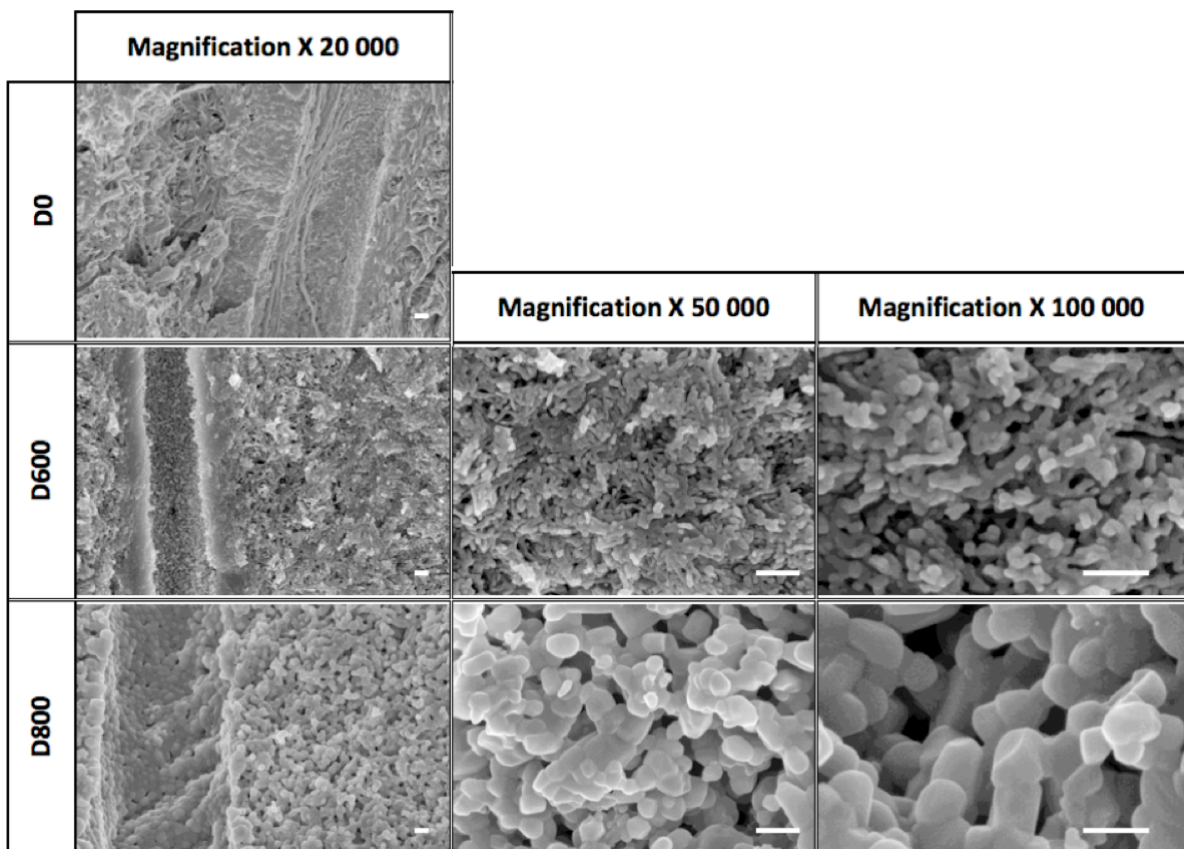


Figure 4 : FESEM images of sound human dentin (D0) and heat-treated human dentin (D600 and D800) at different magnifications. White bars correspond to 200nm.

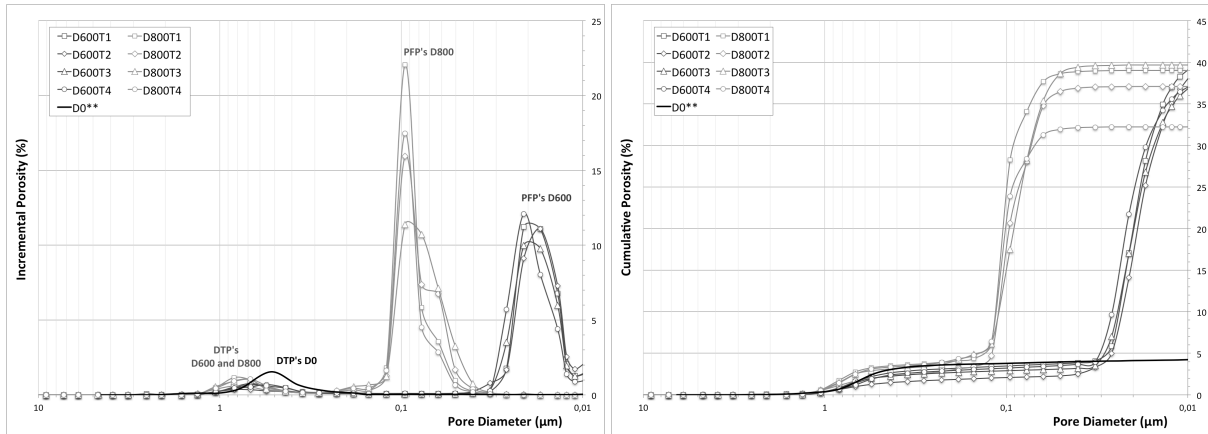


Figure 5 : Cumulative (a) and Incremental (b) pore size distribution obtained for groups D0, D600 and D800. Dentinal Tubule Porosity (DTP) and Protein-Free Porosity (PFP) are indicated.

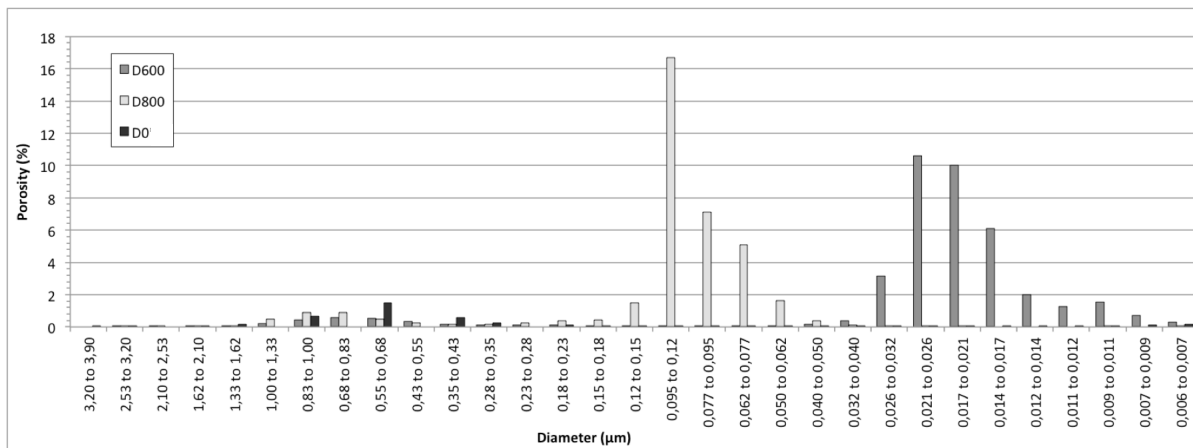


Figure 6: Histogram of the pore size distribution of the groups D0, D600 and D800.

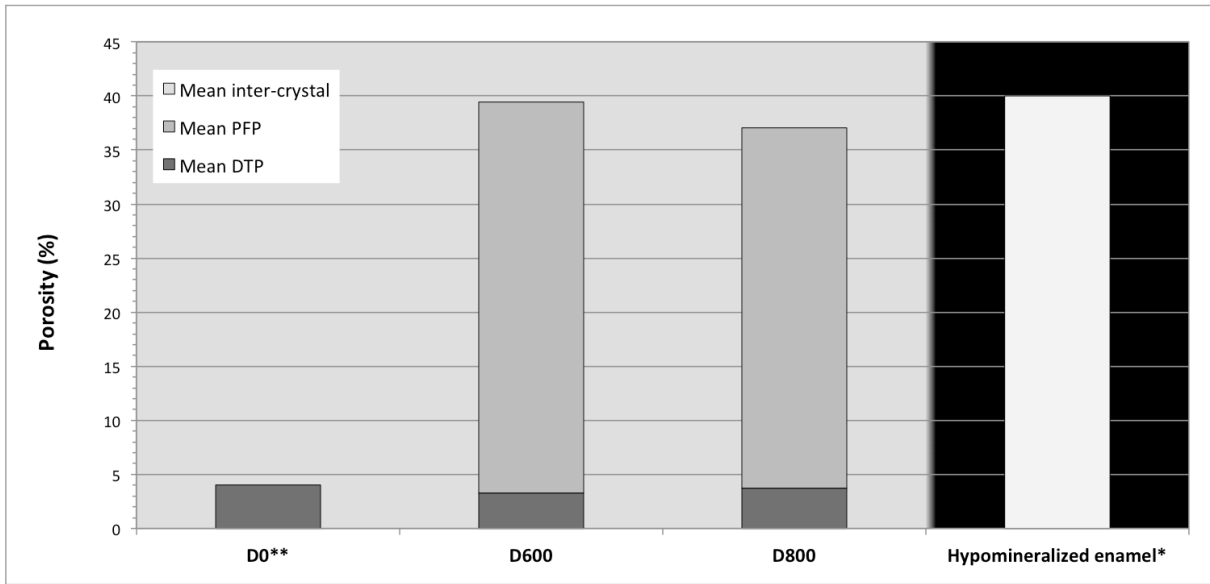


Figure 7: Mean porosity of each group compared with hypomineralized enamel porosity.

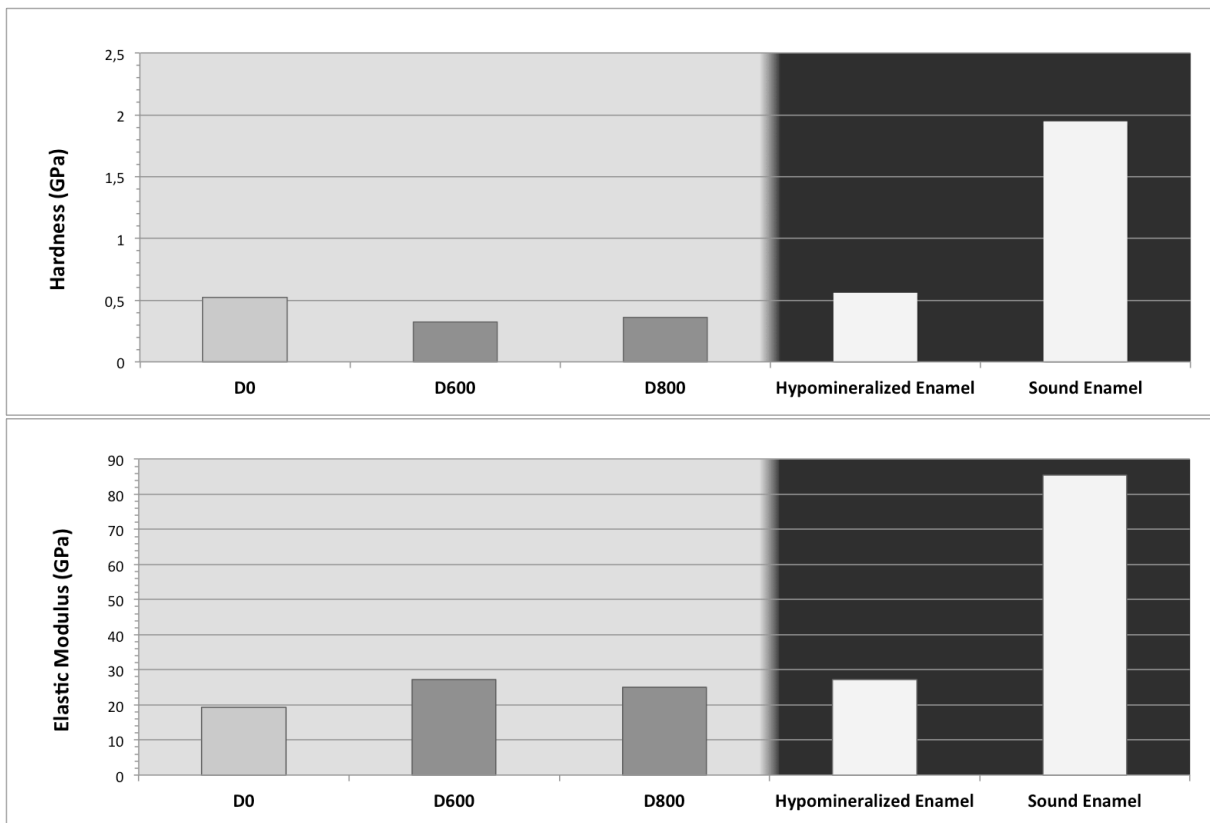


Figure 8 : Mean Hardness and Elastic Modulus obtained by nanoindentation for groups D0, D600, D800 and for hypomineralized and sound enamel.