



**HAL**  
open science

# A theory of many-body localization in periodically driven systems

Dmitry Abanin, Wojciech de Roeck, François Huveneers

► **To cite this version:**

Dmitry Abanin, Wojciech de Roeck, François Huveneers. A theory of many-body localization in periodically driven systems. *Annals of Physics*, 2016, 372, pp.1-11. 10.1016/j.aop.2016.03.010 . hal-01099150v2

**HAL Id: hal-01099150**

**<https://hal.science/hal-01099150v2>**

Submitted on 4 Jan 2017

**HAL** is a multi-disciplinary open access archive for the deposit and dissemination of scientific research documents, whether they are published or not. The documents may come from teaching and research institutions in France or abroad, or from public or private research centers.

L'archive ouverte pluridisciplinaire **HAL**, est destinée au dépôt et à la diffusion de documents scientifiques de niveau recherche, publiés ou non, émanant des établissements d'enseignement et de recherche français ou étrangers, des laboratoires publics ou privés.

# A theory of many-body localization in periodically driven systems

Dmitry A. Abanin,<sup>1,2</sup> Wojciech De Roeck,<sup>3</sup> and François Hueteneers<sup>4</sup>

<sup>1</sup>*Department of Theoretical Physics, University of Geneva, on leave from*

<sup>2</sup>*Perimeter Institute for Theoretical Physics, Waterloo, Canada*

<sup>3</sup>*Instituut voor Theoretische Fysica, KU Leuven, Belgium*

<sup>4</sup>*CEREMADE, Université Paris-Dauphine, France*

(Dated: August 12, 2015)

We present a theory of periodically driven, many-body localized (MBL) systems. We argue that MBL persists under periodic driving at high enough driving frequency: The Floquet operator (evolution operator over one driving period) can be represented as an exponential of an effective time-independent Hamiltonian, which is a sum of quasi-local terms and is itself fully MBL. We derive this result by constructing a sequence of canonical transformations to remove the time-dependence from the original Hamiltonian. When the driving evolves smoothly in time, the theory can be sharpened by estimating the probability of adiabatic Landau-Zener transitions at many-body level crossings. In all cases, we argue that there is delocalization at sufficiently low frequency. We propose a phase diagram of driven MBL systems.

**Introduction.** Recently, there has been much interest in quantum many-body localized (MBL) systems and their properties [1–14, 17–24]. MBL phase is characterized by an extensive set of emergent local integrals of motion (LIOMs) [12, 13], which lead to quantum ergodicity breaking, and in particular, absence of thermalization. Therefore, MBL systems cannot be described by conventional statistical mechanics. Existing works explored experimental manifestations of MBL systems, and predicted universal dynamical properties following a sudden quantum quench, including logarithmic growth of entanglement entropy [6, 8–10, 12, 13], as well as characteristic decay [22] and revivals [23] of local observables.

In this paper, we study the behaviour of MBL systems under periodic driving. Previous works on driven many-body systems focused mostly on the translationally invariant case [25–30]. In particular, D’Alessio and Polkovnikov [27] conjectured that, if the dynamics is generated by switching between an ergodic and an integrable (but translationally-invariant) Hamiltonian, a transition will be observed in function of the driving frequency: At low frequency, the system shows heating to an infinite temperature, while at high frequency the dynamics is described by an effective Hamiltonian written as a sum of local terms, leading to localization in the energy space. Though very long time scales can indeed be needed for energy to get dissipated [31], it was argued that driven ergodic systems typically delocalize and heat up to an infinite temperature at any driving frequency [28, 30, 32].

There are three main motivations to our work. First, studying the response of many-body systems to periodically varying fields is a conventional experimental probe in systems of cold atoms in optical lattices [33, 34], which are promising candidates for realizing the MBL phase [35, 36]. Second, theoretically little is known about general properties of quantum many-body systems under time-varying fields (beyond linear-response). Finally, we investigate the conjecture in [27], in the context of MBL

systems, where counter-arguments based on ergodicity fail in an obvious way.

We consider a time-dependent periodic Hamiltonian  $H(t) = H(t+T)$  and we split it in its mean and oscillating parts:  $H(t) = H^{(0)} + V(t)$  with  $H^{(0)} = \frac{1}{T} \int_0^T dt H(t)$ . We analyze the one-cycle evolution operator  $U(T) =: e^{-iH_*T}$ , where  $H_*$  is an effective (Floquet) Hamiltonian, which a priori can be nonlocal, and where the evolution operator  $U(\cdot)$  solves

$$i \frac{d}{dt} U(t) = H(t)U(t), \quad U(0) = 1. \quad (1)$$

We study the case where the time-averaged Hamiltonian  $H^{(0)}$  is fully MBL (i.e. has all its eigenstates localized), and determine conditions on  $V(t)$  so that  $H_*$  is still local and fully MBL which implies, in particular, energy localization [37]. Our work consists of two parts:

(a) We show that  $H_*$  is MBL via successive canonical transformations. Our method is directly inspired by the scheme devised by Imbrie [17] (see also [38]) to establish the existence of a localized phase for time-independent Hamiltonians. As this scheme allows to go beyond asymptotic expansions, we claim that it furnishes a more robust foundation to MBL in driven systems than the use of Magnus expansion [27]. We emphasize both that  $H^{(0)}$  can be fully MBL even when the instantaneous Hamiltonian  $H(t)$  is ergodic for most or even all  $t \in [0, T]$ , and that  $V(t)$  is not required to vary continuously with time (square signals as in [39] are allowed).

(b) We assume that  $V(t)$  involves only a few harmonics, i.e. varies smoothly with time. In that case, we don’t expect the scheme mentioned in (a) to lead to optimal conditions on the lowest possible frequency to ensure MBL. Instead, we base our analysis on an analogy with the multi-level Landau-Zener problem. In particular, we argue that at sufficiently low frequency, the Floquet operator strongly mixes states with a very different spatial structure, thus inducing delocalization.

Based on (a) and (b), we propose a qualitative phase diagram of driven MBL systems (see Fig. 1).

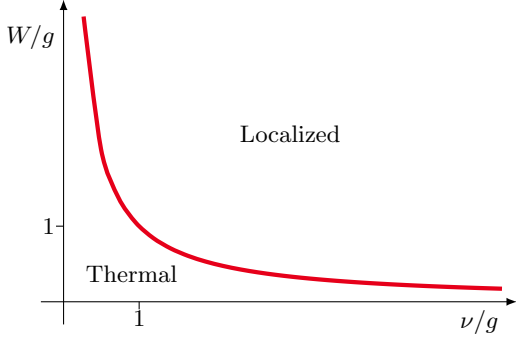


FIG. 1. Qualitative phase diagram of the driven MBL system. For  $\nu/g > 1$  (and  $W/g < 1$ ), the transition is determined by (15):  $W/g \sim (\nu/g)^{-1}$ . For  $\nu/g \leq 1$  (and  $W/g \geq 1$ ), and for a smooth driving, the transition is predicted by (24):  $W/g \sim (\nu/g)^{-a}$  with  $a \sim \xi$ .

**Model.** For concreteness, we assume that our system is a one-dimensional spin-1/2 chain of size  $L$ . We make the following assumptions: (a) The Hamiltonian  $H^{(0)}$  is fully MBL, and therefore it has a complete set of LIOMs. Choosing the LIOMs to be the local spins  $\sigma_j^z$ ,  $H^{(0)}$  takes the form (see [12, 13, 17])

$$H^{(0)} = \sum_i \varepsilon_j \sigma_j^z + \sum_{i < j} \varepsilon_{i,j} \sigma_i^z \sigma_j^z + \dots \\ + \sum_{i_1 < \dots < i_n} \varepsilon_{i_1, \dots, i_n} \sigma_{i_1}^z \dots \sigma_{i_n}^z + \dots \quad (2)$$

where  $|\varepsilon_{i_1, \dots, i_n}| \sim e^{-(i_n - i_1)/\xi}$ , except at rare resonant spots. Through this work we assume that  $H^{(0)}$  is strongly localized:  $\xi \ll 1$ . (b) The energies  $\varepsilon_{i_1, \dots, i_n}$  are functions of the local disorder, hence random; we set

$$\langle \varepsilon_i \rangle = E_0, \quad \langle (\varepsilon_i - E_0)^2 \rangle = W^2, \quad (3)$$

and we assume  $E_0 \sim W$ . (c) The driving is of the form

$$V(t) = \sum_i V_i(t), \quad \frac{1}{T} \int_0^T dt V_i(t) = 0, \quad \|V_i(t)\| \sim g, \quad (4)$$

where  $g$  is the driving strength, and where  $V_i(t) = V_i(t+T)$  are local around site  $i$ , implying  $\| [V_i(t), \sigma_j^w] \| \lesssim e^{-|i-j|/\xi}$  for  $w = x, y, z$ .

**Localization at high frequency.** To get explicit expressions, we take  $H^{(0)}$  to be given by the first sum in (2) only [40], while for  $V(t)$  we take the simple toy model

$$V(t) = \sum_i \sum_{w_1, w_2 = x, y, z} J_{i, i+1}^{w_1, w_2}(t) \sigma_i^{w_1} \sigma_{i+1}^{w_2} \quad (5)$$

with  $J_{i, i+1}^{w_1, w_2}(t) = J_{i, i+1}^{w_2, w_1}(t)$  and

$$\sup_{t, i, w_1, w_2} |J_{i, i+1}^{w_1, w_2}(t)| \leq g. \quad (6)$$

It is one of our main observations that, for  $\nu = 1/T$  large enough compared to  $g$ , the uniform bound (6) is all we need: as we argue now, MBL in periodically driven systems can be understood in very much the same way as MBL in isolated systems.

Let  $H_*$  be such that  $U(T) = e^{-iH_*T}$ . There exists a periodic unitary  $P(t) = P(t+T)$  such that  $U(t) = P(t)e^{-iH_*t}$ ; indeed we just define  $P(t)$  by

$$P(t) = U(t)e^{iH_*t}. \quad (7)$$

This can be equivalently stated as

$$P^\dagger(t) \left( H(t) - i \frac{d}{dt} \right) P(t) = H_*. \quad (8)$$

We now change the point of view and we take (8) as our starting point: we don't assume to know  $H_*$  and we look for a periodic unitary  $P(t) = P(t+T)$  satisfying  $P(0) = 1$  such that the right hand side of (8) is time-independent.

Formally, (8) is solved by successive approximations:  $P(t) = \lim_{n \rightarrow \infty} P_1(t) \dots P_n(t)$ . We write  $H_1(t) = H(t)$  and, for  $n \geq 1$ , we will determine  $P_n(t)$  so as to make  $H_{n+1}(t)$  “as close as possible” to a time-independent Hamiltonian, where  $H_{n+1}(t)$  is defined by

$$P_n^\dagger(t) \left( H_n(t) - i \frac{d}{dt} \right) P_n(t) = H_{n+1}(t) \quad (n \geq 1). \quad (9)$$

If the procedure is successful,  $H_n(t)$  becomes truly time-independent in the limit  $n \rightarrow \infty$ :  $H_* = \lim_{n \rightarrow \infty} H_n(t)$ .

As an exemplary case, let us implement the first step of the scheme, i.e. determine  $P_1(t)$  and  $H_2(t)$ . As in [17], we decompose  $V(t)$  as  $V(t) = V^{per}(t) + V^{res}(t)$ , where  $V^{res}(t)$  includes the resonant transitions, that cannot be treated in perturbation:

$$V^{res}(t) = \sum_{(i, i+1) \in \text{Res}} \sum_{w_1, w_2 = x, y, z} J_{i, i+1}^{(w_1, w_2)}(t) \sigma_i^{(w_1)} \sigma_{i+1}^{(w_2)}.$$

where  $\text{Res}$  is a time-independent set containing bonds where resonances (possibly) occur, defined as follows. Let us denote the eigenstates of  $H^{(0)}$  by  $|\eta\rangle$ , corresponding thus to all possible configurations of up and down spins. We say that  $(i, i+1) \in \text{Res}$  if there exist two states  $|\eta\rangle$  and  $|\eta'\rangle$  as well as  $w_1, w_2$  such that  $\langle \eta' | \sigma_i^{(w_1)} \sigma_{i+1}^{(w_2)} | \eta \rangle \neq 0$  and such that

$$\inf_{k \in \mathbb{Z}_0} |\Delta H_{\eta, \eta'}^{(0)} - 2\pi k \nu| \leq \delta \nu \quad (10)$$

where  $\Delta H_{\eta, \eta'}^{(0)} = \langle \eta' | H^{(0)} | \eta' \rangle - \langle \eta | H^{(0)} | \eta \rangle$  and where  $\delta \ll 1$  is some (partially arbitrary) threshold. The probability that  $(i, i+1) \in \text{Res}$  is bounded as

$$P((i, i+1) \in \text{Res}) \leq C\delta, \quad (11)$$

independently of  $\nu$  and  $W$  (see Supplementary Material I).

We now proceed to the perturbative analysis: We decompose  $P_1(t)$  as  $P_1(t) = P_1^{res}(t)P_1^{per}(t)$  and we determine  $P_1^{per}(t)$ . We define it as  $P_1^{per}(t) = e^{A_1(t)}e^{-A_1(0)}$  where  $A_1(t)$  is a dimensionless anti-hermitian matrix satisfying

$$[H^{(0)}, A_1(t)] - i \frac{dA_1(t)}{dt} = V^{per}(t) \quad (12)$$

with  $A_1(t) = A_1(t+T)$ . Since  $H_0$  is MBL and since (10) is violated for the transitions of  $V^{per}(t)$ ,

$$A_1(t) = \sum_{i, w_1, w_2} A_{i, i+1}^{(w_1, w_2)}(t) \sigma_i^{(w_1)} \sigma_{i+1}^{(w_2)} \quad (13)$$

with the bounds

$$\sup_{t, i, w_1, w_2} |A_{i, i+1}^{(w_1, w_2)}(t)| \leq \delta^{-1} g/\nu \quad (14)$$

(see Supplementary Material II). We compute

$$\begin{aligned} H_{3/2}(t) &:= P_1^{per, \dagger}(t) \left( H(t) - i \frac{d}{dt} \right) P_1^{per}(t) \\ &= H^{(0)} + V^{res}(t) + \sum_{n \geq 1} \frac{\text{ad}_{A_1}^n(t)}{n!} \left( \frac{nV^{per}(t)}{n+1} + V^{res}(t) \right) \end{aligned}$$

with  $\text{ad}_A(B) = [A, B]$  (to simplify the expression we pretended that  $e^{A_1(0)} = 1$  [41]). This expansion converges if  $\delta^{-1}g/\nu$  is sufficiently small, see (2.7)-(2.10) in [17].

From now on we assume that  $\delta^{-1}g/\nu \ll 1$ , so that, except for  $V_1^{res}(t)$ , all the time-dependent terms in  $H_{3/2}(t)$  have been reduced by one factor  $\delta^{-1}g/\nu$  at least. We now define  $P_1^{res}(t)$  as to get rid of  $V_1^{res}(t)$ . Thanks to (7), there exists  $P_1^{res}(t)$  so that

$$P_1^{res, \dagger}(t) \left( H^{(0)} + V^{res}(t) - i \frac{d}{dt} \right) P_1^{res}(t)$$

is time-independent. The main point is that, thanks to (11), the Hamiltonian  $H^{(0)} + V^{res}(t)$  acts non-trivially only on small and far between connected sets of bonds (the resonant spots). Therefore, though  $P_1^{res}(t)$  is not explicit, we know that it cannot ruin the localization, as it acts only inside the resonant spots.

The first step is now completed, defining  $H_2(t)$  via (9). In order to iterate the scheme, we decompose again  $H_2(t) = H_2^{(0)} + V^{(2)}(t)$  with  $H_2^{(0)} = \frac{1}{T} \int_0^T dt H_2(t)$ , and we need to make sure that  $H_2^{(0)}$  is MBL. As the diagonal part of  $H_2^{(0)}$  is still given in leading approximation by  $H^{(0)}$ , with disorder strength  $W$ , and as the off-diagonal elements are at most of order  $\delta^{-1}g^2/\nu$  from the expression of  $H_{3/2}(t)$ , we find the condition  $\delta^{-1}g^2/\nu \ll W$ . Dropping the artificial factor  $\delta^{-1}$ , the conditions for localization read

$$g/\nu \ll 1, \quad g^2/\nu W \ll 1. \quad (15)$$

Unless the driving varies smoothly with time, we expect in general delocalization if one of these bounds get violated (see Supplementary Material III).

All the key points to proceed with the reduction of the time-dependent part of  $H(t)$  at further and further scales did show up already at the first scale, and most of the technical work involved in the process can at this point be borrowed from [17]; this includes the expansion of the perturbation in graphs, combinatorics estimates involved in the expansions of perturbative change of variables, the precise statement of resonance conditions, etc. (see Supplementary Material IV for higher order resonances).

**Localization at lower frequency.** We now consider the case where the driving contains only a few harmonics (e.g.  $V_i(t) = \cos(2\pi\nu t)\bar{V}_i$  with  $\bar{V}_i$  time-independent) and we argue that delocalization occurs at frequencies which are lower than the threshold given by (15).

Our argument relies on the analogy with the multi-level Landau-Zener problem. It is convenient to slightly modify the notations: We introduce the dimensionless parameter  $\lambda = \nu t$  and function  $\hat{V}(\lambda) = V(\lambda)/g$ , so that

$$H(\lambda) = H^{(0)} + g\hat{V}(\lambda). \quad (16)$$

We assume that  $g/W \ll 1$  is small enough so that each Hamiltonian  $H(\lambda)$  is MBL for any  $\lambda \in [0, 1]$  with a localization length comparable to  $\xi$  (the localization length of  $H^{(0)}$ ). For the sake of exposition, let us split  $\hat{V} = \hat{V}_d + \hat{V}_{od}$  such that  $\hat{V}_d$  is the part of the perturbation that commutes with  $H^{(0)}$ . Then we write  $\alpha$  and  $E_\alpha = E_\alpha(\lambda)$  for the eigenvectors and energies of  $H^{(0)} + g\hat{V}_d(\lambda)$ . As  $\lambda$  goes through a cycle, these levels can cross, whereas the levels of  $H(\lambda)$  have an avoided crossing (see Fig. 2(a)). The character of a pairwise level crossing is determined by (i) the matrix element of the operator  $\hat{V}(\lambda)$  between the energy levels  $|\alpha\rangle, |\beta\rangle$  that undergo the crossing,  $M_{\alpha\beta} = \langle \beta | \hat{V}_d(\lambda_c) | \alpha \rangle$ , where  $\lambda_c$  is the value of parameter  $\lambda$  at which crossing takes place, and by (ii) the speed at which the crossing is passed:  $v_{\alpha\beta} = \frac{d(E_\alpha(\lambda) - E_\beta(\lambda))}{d\lambda} \nu$ . In the Landau-Zener problem (crossing of just two levels), the transition amplitude is given by (see e.g. [42]):

$$S_{\alpha \rightarrow \beta} = \exp(-C_{\alpha\beta}), \quad C_{\alpha\beta} \equiv \pi \frac{|M_{\alpha\beta}|^2}{v_{\alpha\beta}}, \quad (17)$$

and therefore one can distinguish three regimes: (i) *adiabatic*, when parameter  $C_{\alpha\beta} \gg 1$ ; in this case, the system ends up in eigenstate  $\beta$  after the crossing is passed, and the probability to stay in the ‘‘excited’’ state  $\alpha$  is exponentially small; (ii) *diabatic*, when  $C_{\alpha\beta} \ll 1$ ; in this case, the system stays in state  $\alpha$ ; (iii) *intermediate*, when  $C_{\alpha\beta} \sim 1$ ; in this case, the system ends up in a superposition of states  $\alpha$  and  $\beta$  at long times, with approximately similar weights. The three regimes are illustrated in Fig. 2(b-d).

As we will now argue, in our problem the relevant crossings, which lead to delocalization at low frequency,

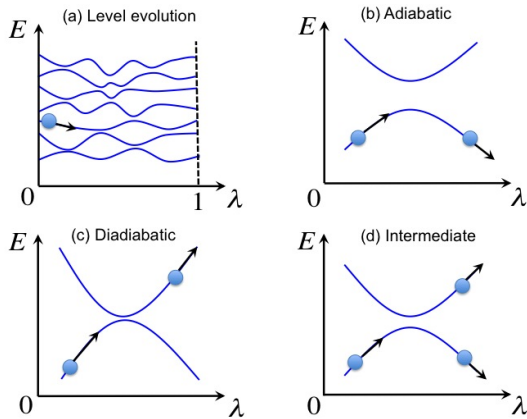


FIG. 2. (a) Spectrum of the many-body localized system as a function of parameter  $\lambda$ . (b-d) Three kinds of level crossings: (b) Adiabatic, when the system follows instantaneous eigenstate, (c) Diabatic, when the system ends up in the original eigenstate, and (d) Intermediate, when the system is in a superposition of two states at long times.

occur between levels that differ only by a small number of LIOMs. Let us consider two levels  $\alpha, \beta$ , which have different values of local integrals of motion only in a region  $R$  of size  $x \ll L$ . We first show that there is a scale  $x_1$ , such that at  $x \ll x_1$  the crossings between states which differ in region  $R$  are very rare, while at  $x \gg x_1$  there are many such crossings. There are  $2^x$  different levels which have different value of LIOMs in the region  $R$  and are identical outside  $R$ , and an overwhelming majority of these levels lives in a band of width of order  $W\sqrt{x}$  [44]. Therefore, the typical level spacing for this group of levels can be estimated as:

$$\Delta(x) \approx W \frac{\sqrt{x}}{2^x}. \quad (18)$$

On the other hand, the typical change of energy difference between two levels  $\alpha, \beta$ , whose LIOMs differ only in the region  $R$ , can be estimated as

$$\delta E_{\alpha\beta}(x) \sim g |\langle \alpha | \hat{V} | \alpha \rangle - \langle \beta | \hat{V} | \beta \rangle| \sim g\sqrt{x}, \quad (19)$$

when  $\delta\lambda \sim 1$ , and where we used  $\|\hat{V}_i\| \sim 1$ . If  $\delta E_{\alpha\beta}(x)$  is much smaller than the level spacing  $\Delta(x)$ , the levels in this group typically do not cross. In the opposite limit,  $\delta E_{\alpha\beta} \gg \Delta(x)$ , there are multiple level crossings of this kind. The scale  $x_1$  can therefore be estimated from the condition  $\delta E_{\alpha\beta}(x) \approx \Delta(x)$ , which gives:

$$x_1 = \log_2 \frac{W}{g}. \quad (20)$$

At  $x \gtrsim x_1$ , each level  $\alpha$  therefore crosses multiple other levels which differ from  $\alpha$  by changing values of some or all LIOMs in (any) region of size  $x$ .

Next, let us understand the character of crossings between levels  $\alpha, \beta$  that have different LIOMs only in a region  $R$  or size  $x$  (assuming that such a crossing is encountered as  $\lambda$  is varied). First, we estimate the speed at which the crossing is passed:  $v_{\alpha\beta}(x) \sim \delta E_{\alpha\beta} \nu \sim g\nu\sqrt{x}$ . Second, we note that the typical matrix element of a local operator between two MBL eigenstates which differ in region  $R$ , is given by:

$$M_{\alpha\beta}(x) \sim g \langle \alpha | \hat{V} | \beta \rangle \sim g\sqrt{x} e^{-x/\xi}. \quad (21)$$

The value of the parameter  $C_{\alpha\beta}(x)$  characterizing the crossing is then given by:

$$C_{\alpha\beta}(x) \sim \frac{g\sqrt{x}}{\nu} e^{-2x/\xi}. \quad (22)$$

The crossing is in the intermediate regime (the two crossing levels mix strongly at long times) at scale  $x_2$ , which can be estimated from the relation  $C_{\alpha\beta}(x_2) \sim 1$ :

$$x_2 \approx \frac{\xi}{2} \log \frac{g}{\nu}. \quad (23)$$

At  $x \gg x_2$ , (nearly) all crossings are in the diabatic regime, while at  $x \ll x_2$  crossings are adiabatic.

The properties of the Floquet operator, most importantly the way it mixes states with very different spatial structure, depend on the relation between length scales  $x_1, x_2$  given by (20,23). If  $x_2 \gg x_1$ , during one period of driving, each level experiences multiple crossings which are in the intermediate or adiabatic regime. This means that the operator  $U(T)$  cannot be considered a small perturbation of  $U_{g=0}(T) = \exp(-iTH^{(0)})$ , as it changes the values of most LIOMs. Hence, in this case we expect that the eigenstates of  $U(T)$  are delocalized.

From (20,23), we deduce that the condition  $x_2 \ll x_1$  for localization is written in terms of the frequency  $\nu$  as

$$\frac{g}{\nu} \left( \frac{g}{W} \right)^{1/a} \ll 1, \quad \text{with } a = \frac{\xi \log 2}{2}. \quad (24)$$

By the above reasoning, we expect delocalization once condition (24) gets violated. See Fig. 3.

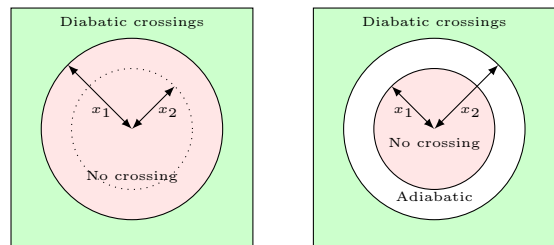


FIG. 3. Scales  $x_1$  and  $x_2$  (here  $d = 2$  for visualization). Left panel: at high frequency, when (24) holds, all the crossings are typically diabatic. Right panel: at lower frequency, when (24) is violated, adiabatic crossings typically appear.

**Discussion.** In summary, we have provided strong analytical evidence that many-body localization persists under periodic driving, if the driving frequency is high enough. The MBL phase in driven systems is characterized by the existence of an MBL (time-independent) effective Hamiltonian, implying thus (i) the existence of an extensive number of local conservation laws [12, 13, 20, 21]; (ii) area-law for all, but an exponentially small fraction of Floquet eigenstates [12, 14–16]; (iii) logarithmic spreading of entanglement entropy of initial product states [6, 8–10, 12, 13]. At sufficiently low driving frequencies, the system undergoes a transition into the delocalized phase.

We note that our results are in agreement with two previous recent studies [39, 43], which provided qualitative arguments and numerical evidence for the existence of the MBL phase at large driving frequency and delocalization at small frequency.

**Acknowledgements.** We thank A. Polkovnikov, P. Ponte, Z. Papić, Y. Wan and an anonymous referee for helpful discussions and suggestions. D.A. acknowledges support by Alfred Sloan Foundation. W.D.R. thanks the DFG (German Research Fund) and the Belgian Interuniversity Attraction Pole (P07/18 Dygest) for financial support. Both F.H. and W.D.R. acknowledge the support of the ANR grant JCJC.

- 
- [1] P. W. Anderson, *Physical Review*, **109**(5), 1492-1505, (1958).
- [2] J. Fröhlich, T. Spencer. *Comm. Math. Phys.* **88**(2), 151-184 (1983).
- [3] I. V. Gornyi, A. D. Mirlin, and D. G. Polyakov, *Phys. Rev. Lett.* **95**, 206603 (2005).
- [4] D. Basko, I. Aleiner, and B. Altshuler, *Annals of Physics* **321**, 1126 (2006).
- [5] V. Oganesyan and D. A. Huse, *Phys. Rev. B* **75**, 155111 (2007).
- [6] M. Znidaric, T. Prosen, and P. Prelovsek, *Phys. Rev. B* **77**, 064426 (2008).
- [7] A. Pal and D. A. Huse, *Phys. Rev. B* **82**, 174411 (2010).
- [8] J. H. Bardarson, F. Pollmann, and J. E. Moore, *Phys. Rev. Lett.* **109**, 017202 (2012).
- [9] R. Vosk and E. Altman, *Phys. Rev. Lett.* **110**, 067204 (2013).
- [10] M. Serbyn, Z. Papić, and D. A. Abanin, *Phys. Rev. Lett.* **110**, 260601 (2013).
- [11] D. A. Huse, R. Nandkishore, V. Oganesyan, A. Pal, and S. L. Sondhi, *Phys. Rev. B* **88**, 014206 (2013).
- [12] M. Serbyn, Z. Papić, and D. A. Abanin, *Phys. Rev. Lett.* **111**, 127201 (2013).
- [13] D. A. Huse, R. Nandkishore, and V. Oganesyan, *Phys. Rev. B* **90**, 174202 (2014).
- [14] B. Bauer and C. Nayak, *J. Stat. Mech.* (2013) P09005.
- [15] K. Van Acoleyen, M. Mariën, F. Verstraete, *Phys. Rev. Lett.* **111**.17, 170501 (2013)
- [16] Let us consider LIOMs that are obtained from the physical spins by a quasilocal unitary transformation that is generated by a time-dependent Hamiltonian (the operator  $iA$  in our case). Then the work in [15] shows that such quasilocal unitaries preserve the area-law property.
- [17] J. Z. Imbrie, arXiv:1403.7837 (2014).
- [18] D. Pekker, G. Refael, E. Altman, E. Demler, and V. Oganesyan, *Phys. Rev. X* **4**, 011052 (2014).
- [19] J. A. Kjall, J. H. Bardarson, F. Pollmann, *Phys. Rev. Lett.* **113**, 107204 (2014).
- [20] V. Ros, M. Mueller, and A. Scardicchio, arXiv:1406.2175 (2014).
- [21] A. Chandran, I. H. Kim, G. Vidal, and D. A. Abanin, arXiv:1407.8480 (2014).
- [22] M. Serbyn, Z. Papić, and D. A. Abanin, *Phys. Rev. B* **90**, 174302 (2014).
- [23] R. Vasseur, S. A. Parameswaran, and J. E. Moore, arXiv:1407.4476 (2014).
- [24] V. Khemani, R. Nandkishore, and S. L. Sondhi, arXiv:1411.2616 (2014).
- [25] T. Prosen, *Phys. Rev. Lett.* **80**, 1808 (1998).
- [26] A. Russomanno, A. Silva, and G. E. Santoro, *Phys. Rev. Lett.* **109**, 257201 (2012).
- [27] L. D’Alessio and A. Polkovnikov, *Annals of Physics* **333**, 19 (2013).
- [28] L. D’Alessio and M. Rigol, arXiv:1402.5141 (2014).
- [29] S. Choudhury, and E. J. Mueller, *Phys. Rev. A* **90**, 013621 (2014).
- [30] A. Lazarides, A. Das, and R. Moessner, *Phys. Rev. E* **90**, 012110 (2014).
- [31] D. Abanin, W. De Roeck, and F. Huveneers, arXiv:1507.01474 (2015).
- [32] P. Ponte, A. Chandran, Z. Papić, and D. A. Abanin, *Annals of Physics* **353**, 196 (2015).
- [33] I. Bloch, J. Dalibard, and W. Zwerger, *Rev. Mod. Phys.* **80**, 885 (2008).
- [34] A. Polkovnikov, K. Sengupta, A. Silva, and M. Vengalattore, *Rev. Mod. Phys.* **83**, 863 (2011).
- [35] S. S. Kondov, W. R. McGehee, W. Xu, and B. DeMarco, arXiv:1305.6072 (2013).
- [36] C. D’Errico, M. Moratti, E. Lucioni, L. Tanzi, B. Deissler, and M. Inguscio, *New J. Phys.* **15**, 045007 (2013).
- [37] Remark that, for energy localization, it is already sufficient to find  $H_*$  that can be written as a sum of local terms, even if  $H_*$  itself is ergodic, i.e. not MBL. However, the only instance where we know that this happens ( $H_*$  local but not MBL) is for free fermions or bosons at  $\nu$  larger than the bandwidth.
- [38] D. Bambusi, and S. Graffi, *Comm. Math. Phys.* **219**, 465-480 (2001).
- [39] P. Ponte, Z. Papić, F. Huveneers, and D. A. Abanin, *Phys. Rev. Lett.* **114**, 140401 (2015).
- [40] This amounts essentially to neglecting local resonant spots in  $H^{(0)}$ . This is a posteriori justified since these spots should be treated in the same way as resonances induced by the driving, which are discussed in the present paper.
- [41] Neglecting  $e^{A_1^{(0)}}$  amounts to describing  $H_*$  in a basis that is related to the original one by a quasi-local change of variables. This does not affect our conclusions.
- [42] A. V. Shytov, *Phys. Rev. A* **70**, 052708 (2004).
- [43] A. Lazarides, A. Das, and R. Moessner, arXiv:1410.3455 (2014).
- [44] We assume a Gaussian density of states, though the

power of  $x$  here does not influence our conclusion. For a mathematical result on Gaussian density of levels, see e.g. [45]

[45] J.P. Keating, N. Linden, H. J. Wells, *Comm. Math. Phys.* 338.1, 81-102. (2015).

## SUPPLEMENTARY MATERIAL: A THEORY OF MANY-BODY LOCALIZATION IN PERIODICALLY DRIVEN SYSTEMS

Content of the Supplementary Material: Sections I and II contain straightforward computations that allow us to derive the relations (11), (13) and (14) in the main text. Section III bridges a link between our two conditions (15) and (24) for localization. In Section IV, we show how to estimate the probability of resonances in higher orders.

**I. Derivation of (11).** A Gaussian approximation yields

$$\begin{aligned}
& \text{P}((i, i+1) \in \text{Res}) \\
& \leq \sum_{k \neq 0} \sum_{a, b \in \{0, \pm 2\}} \text{P}(|a\varepsilon_i + b\varepsilon_{i+1} - 2\pi k\nu| \leq \delta\nu) \\
& \sim \sum_{k \neq 0; a, b} \int_{-\infty}^{+\infty} \frac{dz}{W} e^{-\frac{(z-2\pi k\nu)^2}{(\delta\nu)^2}} e^{-\frac{(z-(a+b)E_0)^2}{W^2}} \\
& \sim \sum_{k \neq 0; a, b} \delta\nu \frac{e^{-\frac{(2\pi k\nu - (a+b)E_0)^2}{(\delta\nu)^2 + W^2}}}{\sqrt{(\delta\nu)^2 + W^2}} \\
& = \delta \sum_{a, b} \sum_{k \neq 0} \frac{e^{-\frac{(2\pi k - (a+b)E_0/\nu)^2}{\delta^2 + (W/\nu)^2}}}{\sqrt{\delta^2 + (W/\nu)^2}} \leq C\delta,
\end{aligned}$$

where the last bound follows from the fact that  $k \neq 0$  and  $E_0 \sim W$ , so that the sum over  $k$  can be approximated by an integral of a probability density.

Though we derived (11) through a Gaussian approximation for simplicity, it is much more general; the important point is that the distribution of  $\varepsilon_i$  does not force the energies to be such that  $a\varepsilon_i + b\varepsilon_j$  is typically near a value of the form  $2\pi k\nu$  for some  $k \neq 0$ , for which the key ingredient was here  $E_0 \sim W$ . Finally, it may appear as a surprise that  $W$  is not involved in the bound (11). This is a consequence of our assumption  $\frac{1}{T} \int_0^T dt V(t) = 0$ , implying that we can discard  $k = 0$  in (11). The condition on  $W$  appears later, when requiring that  $H_2^{(0)}$  is MBL in (15).

**II. Derivation of (13)-(14).** The proof of these relations relies crucially on the fact that condition (10) is violated, and that  $H_0$  is MBL, i.e. that a local operator couples only a few close LIOMs (due to our simplifications, this is here obvious since both the eigenstates of  $H^{(0)}$  and the perturbation terms  $V_i(t)$  are strictly local). In terms of the matrix elements, (12) reads

$$\begin{aligned}
& \left( \Delta H_{\eta, \eta'}^{(0)} - i \frac{d}{dt} \right) \langle \eta' | A_1(t) | \eta \rangle = \langle \eta' | V^{per}(t) | \eta \rangle, \\
& \langle \eta' | A_1(t) | \eta \rangle = \langle \eta' | A_1(t+T) | \eta \rangle.
\end{aligned}$$

When  $\Delta H_{\eta, \eta'}^{(0)} = 0$ , i.e. for  $\eta = \eta'$ , the solution exists thanks to the condition  $\frac{1}{T} \int_0^T dt V^{per}(t) = 0$  and is given by

$$\langle \eta | A_1(t) | \eta \rangle = i \int_0^t ds \langle \eta | V^{per}(s) | \eta \rangle$$

where we have chosen the initial condition  $\langle \eta' | A_1(0) | \eta \rangle = 0$ . When  $\Delta H_{\eta, \eta'}^{(0)} \neq 0$ , i.e. when  $\eta \neq \eta'$ , the solution is given by

$$\begin{aligned}
\langle \eta' | A_1(t) | \eta \rangle &= i \int_0^t ds e^{-i\Delta H_{\eta, \eta'}^{(0)}(t-s)} \langle \eta' | V^{per}(s) | \eta \rangle \\
&+ i \frac{e^{-i\Delta H_{\eta, \eta'}^{(0)}t}}{1 - e^{-i\Delta H_{\eta, \eta'}^{(0)}T}} \int_0^T ds e^{-i\Delta H_{\eta, \eta'}^{(0)}(T-s)} \langle \eta' | V^{per}(s) | \eta \rangle.
\end{aligned}$$

Using again the condition  $\frac{1}{T} \int_0^T dt V^{per}(t) = 0$ , we may replace  $e^{-i\Delta H_{\eta, \eta'}^{(0)}(T-s)}$  by  $e^{-i\Delta H_{\eta, \eta'}^{(0)}(T-s)} - 1$  in this last integral, and use the bound

$$\left| \frac{e^{-i\Delta H_{\eta, \eta'}^{(0)}(T-s)} - 1}{1 - e^{-i\Delta H_{\eta, \eta'}^{(0)}T}} \right| \leq \frac{2}{\min_{k \in \mathbb{Z}_0} \{|T\Delta H_{\eta, \eta'}^{(0)} - 2\pi k|\}}.$$

Since the resonance condition (10) is always violated by the matrix elements of  $V^{per}(t)$ , we obtain the bound

$$\sup_t |\langle \eta' | A_1(t) | \eta \rangle| \leq C\delta^{-1}T \sup_t |\langle \eta' | V^{per}(t) | \eta \rangle| \quad \forall \eta, \eta'.$$

From there, since (12) is linear, we recover (13)-(14).

**III. Smooth vs non-smooth  $V(t)$ .** As it is seen *a posteriori* from (24), the conditions (15) are not always optimal conditions for localization. This comes from the fact that, when the driving  $V(t)$  varies smoothly with time, i.e. is concentrated on a few harmonics, the way we control the solutions of (12) can be improved in some regimes. In view of our estimates based on the Landau-Zener crossings, we would like to consider smaller values of  $\nu$ , violating the constraint  $g/\nu < 1$ , while requiring now  $g/W \ll 1$ . Here we show how our renormalization scheme could be adapted to deal with this case, providing a direct argument for *localization* in this regime,

while the more physical arguments leading to the condition (24) ensured primarily that the system *delocalizes* once this latter condition is violated. We keep however the discussion at the level of general ideas (in particular we do not show how to recover (24)), postponing a more throughout investigation for further works.

Let us move to the Fourier variables in (12):

$$G(k) = \frac{1}{T} \int_0^T dt e^{2i\pi k\nu t} G(t), \quad k \in \mathbb{Z},$$

for  $G = A_1$  and  $G = V$  (we work directly with  $V$  instead of  $V^{per}$  as it would not make sense to maintain this distinction at this level). Smoothness (more precisely analyticity) for  $V(t)$  in the time domain reads  $|V(k)| \sim g e^{-c|k|}$  for some  $c > 0$  in the frequency domain. Eq. (12) becomes

$$[H^{(0)}, A_1(k)] - 2\pi k\nu A_1(k) = V(k), \quad k \neq 0$$

(remember that  $V(k=0) = \frac{1}{T} \int_0^T dt V(t) = 0$ ). Thus, for any  $\eta, \eta'$ ,

$$\langle \eta' | A_1(k) | \eta \rangle = \frac{\langle \eta' | V(k) | \eta \rangle}{\Delta H_{\eta, \eta'}^{(0)} - 2\pi k\nu}. \quad (25)$$

Let us first consider the case  $\eta \neq \eta'$ , so that typically  $\Delta H_{\eta, \eta'}^{(0)} \sim W$ . As long as  $\nu \gtrsim W$ , there is no space for improvement here. However, for  $V$  smooth, the situation changes once  $\nu \ll W$ :

$$\left| \frac{\langle \eta' | V(k) | \eta \rangle}{\Delta H_{\eta, \eta'}^{(0)} - 2\pi k\nu} \right| \sim \frac{g e^{-c|k|}}{|W - 2\pi k\nu|} \sim \frac{g}{W}$$

where we set  $c \sim 1$  for simplicity. Therefore, in this case, the (non-valid) condition  $g/\nu \ll 1$  can be replaced by the (valid) condition  $g/W \ll 1$ , as we expected. The difference between smooth and non-smooth drivings is illustrated on Figure S1.

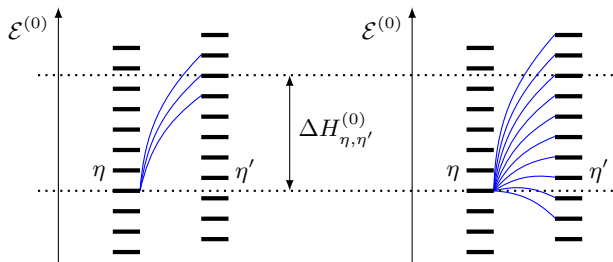


FIG. S1. Horizontal lines represent the values of  $\mathcal{E}^{(0)}(\eta, k) = H_{\eta}^{(0)} - 2\pi k\nu$  for all  $k \in \mathbb{Z}$ , where  $H_{\eta}^{(0)} = \langle \eta | H^{(0)} | \eta \rangle$ . Left panel: a smooth driving  $V(t)$  connects only close harmonics, the shift being due to  $\Delta H_{\eta, \eta'}^{(0)} \sim W$ . Right panel: if  $V(t)$  is not smooth, harmonics are connected even if they are far apart, leading to resonant couplings.

We are still left with the diagonal elements ( $\eta = \eta'$ ). For them,  $\Delta H_{\eta, \eta}^{(0)} = 0$ , and the r.h.s. of (25) behaves like  $g/\nu$ , which can be very large, independently of the value of  $g/W$ . We notice however that the resonances in the on-site terms do not need to entail delocalization. Indeed, for any diagonal Hamiltonian  $D(t)$ , eq. (8) can be solved with  $D_* = \frac{1}{T} \int_0^T ds D(s)$  and

$$P(t) = e^{-i \int_0^t ds (D(s) - D_*)}. \quad (26)$$

Taking for  $D(t)$  the diagonal part of  $V(t)$ , we conclude that the corresponding matrix  $P(t)$ , though non-perturbative, is diagonal, local and preserves the product structure, hence the localization.

If we were giving a precise description here, then there is a catch in the above argumentation, if not correctly interpreted. Indeed, at low frequency,  $P(t)$  defined by (26) does not inherit the smoothness of  $D(t)$ , i.e. even if  $D(k)$  is non-vanishing only for a few low harmonics  $k$ ,  $P(k)$  starts only decaying for  $k \gtrsim g/\nu$ . As the non-perturbative rotation matrix given by (26) affects also the non-diagonal matrix elements, it is not at all clear that our reasoning could be iterated starting from the next step of the scheme. Let us simply point out here that this difficulty is only apparent and can be bypassed by performing the on-site non-perturbative rotations of the type (26) only at the right scale of the scheme, after several rotations of the type (25) have significantly driven down  $V(t)$  (we postpone a more detailed explanation of this to a further work).

**IV. Higher order resonances.** As this is truly at the heart of the localization phenomenon, we check here explicitly that resonances rarefy quickly as higher and higher order couplings are considered. A  $n^{\text{th}}$ -order coupling  $V_i^{(n)}(t)$  is of order  $(g/\nu)^{n-1}g$  and connects at most  $n$  consecutive spins. A resonance occurs if, for two eigenstates  $|\alpha\rangle$  and  $|\beta\rangle$  of the effective Hamiltonian at that scale (i.e. the Hamiltonian  $H_m^{(0)}$  for some  $m = m(n)$ ) that differ only in a box of size  $n$ , we have

$$\frac{(g/\nu)^{n-1}g}{|\Delta E_{\alpha, \beta} - 2\pi k\nu|} \gtrsim 1 \quad \text{for some } k \in \mathbb{Z}_0.$$

As resonances never occur for  $|\alpha\rangle = |\beta\rangle$  in the regime  $g/\nu \ll 1$ , we assume  $|\alpha\rangle \neq |\beta\rangle$ , where we do not expect any help from the extra condition  $k \neq 0$ . Now, the quantity  $\min_{k \in \mathbb{Z}} |E_{\beta} - E_{\alpha} - 2\pi k\nu|$  can be visualized as the distance between  $E_{\alpha}$  and  $E_{\beta}$ , projected on a circle of circumference  $2\pi\nu$  (i.e. their difference modulo  $2\pi\nu$ ). We need thus to consider  $2^n$  eigenvalues on this circle, so that the average level spacing is of order  $2^{-n}\nu$  (for a time-dependent problem, it is of order  $2^{-n}\sqrt{n}W$ , which is not better for any practical purpose) and the smallest level spacing can be estimated by  $e^{-cn}\nu$  for some  $c > 0$  with high probability (to be precise: we make the assumption that there is no conspiracy in the system that produces anomalously small spacings, cfr. the



analogous LLA assumption in [17]). Therefore, if  $g/\nu$  is small enough, we expect resonances to become quickly very atypical at higher scales, hence localization.