



HAL
open science

CSMA/CA Bottleneck Remediation in Saturation Mode with New Backoff Strategy

Baher Mawlawi, Jean-Baptiste Doré

► **To cite this version:**

Baher Mawlawi, Jean-Baptiste Doré. CSMA/CA Bottleneck Remediation in Saturation Mode with New Backoff Strategy. 6th International Workshop on Multiple Access Communications, Dec 2013, Vilnius, Lithuania. pp.70 - 81, 10.1007/978-3-319-03871-1_7. hal-01096314

HAL Id: hal-01096314

<https://hal.science/hal-01096314>

Submitted on 17 Dec 2014

HAL is a multi-disciplinary open access archive for the deposit and dissemination of scientific research documents, whether they are published or not. The documents may come from teaching and research institutions in France or abroad, or from public or private research centers.

L'archive ouverte pluridisciplinaire **HAL**, est destinée au dépôt et à la diffusion de documents scientifiques de niveau recherche, publiés ou non, émanant des établissements d'enseignement et de recherche français ou étrangers, des laboratoires publics ou privés.

CSMA/CA Bottleneck Remediation In Saturation Mode With New Backoff Strategy

Baher Mawlawi^{1,2,3}, Jean-Baptiste Doré¹

¹ CEA-Leti Minatec, 17 rue des Martyrs, 38054 Grenoble Cedex 9, France

baher.mawlawi@cea.fr jean-baptiste.dore@cea.fr

² University of Lyon, INRIA, Villeurbanne, France

³ INSA-Lyon, CITI-INRIA, F-69621, Villeurbanne, France

Abstract. Many modern wireless networks integrate carrier sense multiple access/collision avoidance (CSMA/CA) with exponential backoff as medium access control (MAC) technique. In order to decrease the MAC overhead and the collision probability, we propose in this paper a new backoff strategy leading to better saturation throughput and access delay performance comparing to the classical protocol. We investigate the CSMA/CA with RTS/CTS technique, and we show that our strategy reaches better saturation throughput and access delay especially in dense networks. This proposed strategy distributes users over all the backoff stages to solve the bottleneck problem present in the first backoff stage. Finally, we analyze our strategy and we compare it to the classical one modeled by Markov chain. Analytical and simulation results show the improvement in term of saturation throughput. Cumulative density function (CDF) of the access delay illustrates the important gain obtained by the proposed strategy.

Keywords: Carrier sense multiple access/collision avoidance (CSMA/CA), Markov chain, delay, throughput, backoff algorithm.

1 Introduction

The design of wireless networks for local area communication attracted much of interest [1]. Carrier Sense Multiple Access/Collision Avoidance (CSMA/CA) protocols rely on a decentralized random packet transmission for the efficient use of shared medium. The key features of CSMA/CA is that each link with a pair of transmitter and receiver first senses the medium and transmits a packet only if the channel is sensed idle. Due to its simple and distributed nature, it has been considered as one of the most practical MAC protocols for wireless network. It has been adopted for instance for Wireless Local Area Networks (WLANs) through study group 802.11 [2] and for Wireless Sensor Networks (WSNs) through 802.15.4 [3]. This family of random access protocols is also a

good candidate for future communication systems such as cognitive radio [4], Machine to Machine (M2M) wireless networks and so on.

Many previous works try to improve the throughput performance by attempting to optimize the contention window [5] [6] [7], but they are based on the IEEE 802.11 backoff strategy.

In [8], the throughput and the average access delay for different backoff algorithms were studied by simulation only. In the classical CSMA/CA protocol with 802.11 backoff strategy modeled by Bianchi, it's clearly seen that the first state is the bottleneck of the system, especially in charged mode. In order to improve the throughput and the system delay we propose and develop in this paper a mathematical model for a new backoff strategy based on Markov chain and we analytically prove that the outcome of the new strategy is better than the classical one in terms of saturation throughput and statistical access delay.

The paper is outlined as follows. We briefly review in Section 2 the RTS/CTS mechanisms of CSMA/CA protocol. In Section 3 we explain the proposed backoff strategy and we give a throughput analytical model. Section 4 presents the numerical results of the proposed protocol and a comparison with the classical protocol. Finally, Section 5 is reserved for conclusion.

2 CSMA/CA protocol MAC layer

In order to describe the CSMA/CA protocol, we propose to explain the well known 802.11 CSMA/CA MAC layer. The basic medium access mechanism of IEEE 802.11 is DCF (Distributed Coordination Function) which uses CSMA/CA algorithm to serve shared medium access. It contains two different variants of access method, the basic access method and the optional channel access method with *request-to-send* (RTS) and *clear-to-send* (CTS) exchange. As the latter variant introduces more efficient performance in term of average throughput [9] and solves the hidden node problem [10], CSMA/CA with RTS/CTS will be investigated in this paper. Let's consider a network with many terminals and one access point. If the channel is busy for the transmitters, each one chooses randomly a backoff time (measured in time slots) in the interval $[0, CW)$ where CW is the *contention window*. As long as the channel is sensed idle for a DIFS, i.e. *distributed inter-frame space* time, the timer (backoff) is decreased by one. When the channel is busy the timer counter is blocked and it resumes when the channel is idle again for at least a DIFS period. CW is an integer between CW_{min} and CW_{max} . After each unsuccessful transmission, CW is doubled up to the maximum value equal to $CW_{max}+1$. The source transmits an RTS frame when the backoff reaches zero and wait for transmission permission (CTS) from the potential receiver before sending the current data packet. All stations located in the sender's range that hear the RTS packet should update their NAVs (Network Allocation vector) and defer their transmissions for the duration specified by the RTS. By this strategy, the transmission of data packets and the corresponding ACK can proceed without interference from other nodes. In addition, whenever erroneous frame is detected by a node, it defers its transmission by a fixed du-

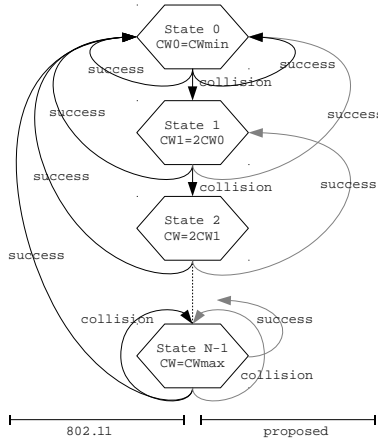


Fig. 1. 802.11 and proposed backoff strategy.

ration indicated by EIFS, i.e., *extended inter-frame space* time. The contention window is initialized to CW_{min} (minimum contention window). Dense networks cause collisions between transmitters. Each station involved in the collision double the size of its contention window. In case of a successful transmission, the transmitter re-initialize its contention window by CW_{min} .

3 Proposed Backoff Algorithm Description

3.1 Description

As explained in Section 2, when a station transmits successfully it returns directly to the first backoff stage. This fact introduces a high collision probability as well as an enormous additive transmission delay due to the high number of users in the same backoff stage ($m = 1$). This situation is seen as bottleneck problem. The proposed CSMA/CA is quite similar to the IEEE 802.11 protocol (Section 2), the main difference remains in case of a successful (i.e. collision-free) transmission, the transmitting station reduces the value of its contention window by half, so as to keep its contention window at least equal to CW_{min} (see Figure 1).

3.2 System Model

In this section we will give the model, the analytical calculation of saturation throughput for the proposed CSMA/CA backoff strategy. We compute the probability of a packet transmission failure due to collision by assuming the following hypothesis [11]:

- No hidden terminal and capture effect.
- Failed transmissions only occur as a consequence of collision.
- All stations are saturated, always having packets to send.
- For any given station, the probability of collision, p , is constant and independent of the station's collision history of the station and all other stations.
- The probability of collision does not depend on the backoff stage at which the transmission is made.
- All users have same bitrates and same amount of time to transmit.

Using the Bianchi's model described in [9] [12] we model the proposed protocol by a Markov chain of $m + 1$ backoff stages as illustrated Figure 2. Each stage of the Markov chain modelled the backoff counter. The number of states per stage is equal to the maximum authorized value of the backoff counter, i.e CW_i . It should be mentioned that we use notations described in [9], i.e $CW_i = 2^i(CW_{min} + 1)$.

When a collision occurs a transition from stage i to $(i + 1)$ is considered and a random backoff will be chosen between 0 and $CW_i - 1$ with probability of $\frac{p}{CW_i}$. A successful transmission is modelled by a transition from stage $(i + 1)$ to i and a random backoff will be chosen between 0 and $CW_{i-1} - 1$ with probability of $\frac{1-p}{CW_{i-1}}$.

Each state of this Markov process is represented by $\{s(t), b(t)\}$, where $b(t)$ is the stochastic process representing the backoff time counter for a given station and $s(t)$ is the stochastic process representing the backoff stage $(0, 1, \dots, m)$ of the station at time t [9]. A discrete and integer time scale is adopted where $t, (t + 1)$ stands for the beginning of two consecutive slot times.

We define p as the probability that, in a slot time, at least one of the $N - 1$ remaining stations transmits. This probability can be expressed by:

$$p = 1 - (1 - \pi)^{(N-1)} \quad (1)$$

Where π is the probability that a station transmits a packet. It can be written by:

$$\pi = \sum_{i=0}^m b_{i,0} \quad (2)$$

Where $b_{i,k} = \lim_{t \rightarrow \infty} P\{s(t) = i, b(t) = k\}$, $i \in (0, m)$, $k \in (0, CW_i - 1)$ is the stationary distribution of the chain. Only $b(i, 0)$ are considered because a transmission occurs when the backoff time counter is equal to zero. By considering the proposed Markov chain, $b_{i,0}$ can be expressed as a function of p :

$$\begin{cases} b_{i,0} = \left(\frac{p}{1-p}\right)^i b_{0,0} & 0 < i \leq m \\ b_{i,k} = \frac{CW_i - k}{CW_i} b_{i,0} & 0 < i \leq m, \quad 0 \leq k \leq CW_i - 1 \end{cases} \quad (3)$$

It should be noticed that this expression is different from the one expressed in [9], due to the proposed backoff strategy. By imposing the classical normalization

condition and considering Equation 3, $b_{0,0}$ can be expressed as a function of p :

$$\begin{aligned}
1 &= \sum_{i=0}^m \sum_{k=0}^{CW_i-1} b_{i,k} \\
&= \frac{b_{0,0}}{2} \left(W_{min} + 1 + W_{min} \frac{(1-p)^m - (2p)^m}{(1-3p)(1-p)^{m-1}} \right. \\
&\quad \left. + \frac{(1-p)^m - p^m}{(1-2p)(1-p)^{m-1}} \right)
\end{aligned} \tag{4}$$

Where $W_{min} = CW_{min} - 1$. Finally, combining equations (2),(3), and (4), the channel access probability π is equal to:

$$\begin{aligned}
\pi &= \sum_{i=0}^m b_{i,0} \\
&= \sum_{i=0}^m \left(\frac{p}{1-p} \right)^i b_{0,0} \\
&= b_{0,0} \frac{(1-p)^m - p^m}{(1-2p)(1-p)^{m-1}}
\end{aligned} \tag{5}$$

This two equations, (1) and (5), form a system of two nonlinear equations that has a unique solution and can be solved numerically for the values of p and π .

The saturation throughput, which is the average information payload in a slot time over the average duration of a slot time, can be expressed using the classical expression [9]:

$$\begin{aligned}
\tau &= \frac{E[\text{Payload information transmitted in a slot time}]}{E[\text{Duration of slot time}]} \\
&= \frac{P_s P_{tr} L}{P_s P_{tr} T_s + P_{tr} (1 - P_s) T_c + (1 - P_{tr}) T_{id}}
\end{aligned} \tag{6}$$

where $P_{tr} = 1 - (1 - \pi)^N$ is the probability that there is at least one transmission in the considered slot time; L is the average packet payload size; T_s is the average time needed to transmit a packet of size L (including the inter-frame spacing periods [12]); $P_s = \frac{N\pi(1-\pi)^{N-1}}{1-(1-\pi)^N}$ is the probability of a successful transmission; T_{id} is the duration of the idle period (a single slot time); and T_c is the average time spent in the collision. T_c and T_s can be calculated for RTS/CTS transmission mode with [9]:

$$\begin{cases} T_s = RTS + SIFS + \sigma + CTS + SIFS + \sigma + H + L \\ \quad + SIFS + \sigma + ACK + DIFS + \sigma \\ T_c = RTS + DIFS + \sigma \end{cases} \tag{7}$$

where H , L , and ACK are the transmission times needed to send the packet header, the payload, and the acknowledgment, respectively. σ is the propagation delay.

4 Numerical Results

In this Section we study the validity, the saturation throughput and the delay of the analytical proposed model. The system of two nonlinear equations (1) and (5) is solved numerically. The protocol and channel parameters adopted are those specified in Table 1. However analysis and results can be extended to others PHY layers. The minimal contention window (W_{min}) has been chosen constant and equal to 16.

Table 1. PHY layer parameters

Packet payload	8184 bits
MAC header	272 bits
PHY header	128 bits
ACK length	112 bits + PHY header
RTS length	160 bits + PHY header
CTS length	112 bits + PHY header
Channel Bit Rate	1 Mbit/s
Propagation Delay	1 μ s
SIFS	28 μ s
Slot Time	50 μ s
DIFS	128 μ s

4.1 Validation Of Analytical Results

In order to validate the analytical model, the proposed backoff strategy is simulated for various number of mobile stations. Saturation throughput is computed for 2 different maximum backoff stages ($m = 3$ and $m = 7$). Figure 3 illustrates the relative error. The difference between the analytical and the simulated model is negligible and it is due to the solve function tolerance as well as the finite number of iteration considered in the simulation.

4.2 System Performance

In this Section, we study the performance of the proposed backoff strategy, so we compute the saturation throughput (bits/sec) vs the number of mobile stations for the RTS/CTS mode. RTS/CTS transmission mode is considered as it avoids the collision between the long data packets especially for high number of mobile stations. Figures 4 and 5 show that the saturation throughput in the proposed strategy is better than the saturation throughput in the classical CSMA/CA protocol with 802.11 backoff strategy for RTS/CTS mechanism, and especially in the cases of large CW_{max} (big m) independently from the number of mobile stations.

For example, in the proposed protocol and for $CW_{max} = 511$ ($m = 5$) we can achieve better saturation throughput than the 802.11 protocol with $CW_{max} = 2047$ ($m = 7$).

Numerical results show, as expected and due to lower probability of collision between transmitters, that the throughput increase when the number of states become higher. This fact is due to the distribution of all users within different backoff states, instead to be all located in the first state (bottleneck of classical 802.11 protocol). Note that we don't take into consideration the retransmission limit and the maximum backoff stage as defined by the IEEE standard specification [13]. It should be mentioned that 802.11 strategy has better performance for large number of users and $m = 3$ and it is due to the lack of spatial degree of liberty.

4.3 Statistical Delay Study

Many previous works [8, 14–16] evaluates the system performance in term of delay by computing or simulating the average access delay. Since the average access delay isn't always a sufficient metric especially in VoIP applications, we go forward to simulate the cumulative density function (CDF) of the access delay. Figure 6 represents the CDF of the access delay for $m = 3$. It's seen clearly from Figure 6 that the delay of the proposed strategy is less than the classical one especially in charged mode (large number of mobile stations). It is due to the fact that users are distributed over all the stages instead to be located in the bottleneck ($m = 1$). Also, the proposed backoff strategy is much more robust with high states number (big m) thanks to the offered spatial liberty. Tables 2 and 3 give different delay values for some CDF with an idea about the gain introduced by our strategy. For instance, 99% of packets are transmitted with at most 17.6 ms (resp 13.9 ms) by the classical IEEE backoff while they are sent with at most 15.5 ms (resp 12.5 ms) by our proposed backoff strategy for $m = 3$ (resp $m = 7$).

Table 2. Delay (*ms*) and gain (%) values in both backoff strategies for many CDF values with $m = 3$

CDF	Proposed Backoff (<i>ms</i>)	Classical Backoff (<i>ms</i>)	Gain (%)
99%	15.5	17.6	11.93
98%	14.5	16.4	11.58
95%	13.3	14.6	8.90
90%	12.4	13.4	7.46

5 Conclusion

In this paper, we proposed and developed an analytical model for a new backoff strategy for CSMA/CA-CTS/RTS protocol. We validated the analytical model

Table 3. Delay (*ms*) and gain (%) values in both backoff strategies for many CDF values with $m = 7$

CDF	Proposed Backoff (<i>ms</i>)	Classical Backoff (<i>ms</i>)	Gain (%)
99%	12.5	13.9	10.07
98%	12.0	13.2	9.09
95%	11.4	12.3	7.32
90%	10.9	11.5	5.22

by simulations and we proved that the saturation throughput performance and the statistical access delay are improved especially in loaded systems. This proposed strategy could be a good candidate to solve the bottleneck problem existing in the classical IEEE 802.11 backoff strategy. Our model assumes a finite number of terminals and ideal channel conditions. The model is suited for both Basic and RTS/CTS access mechanisms. To conclude, in this contribution we proposed a solution for the bottleneck problem, but still as future work to discuss the improvement relative to adaptive minimum contention window and to find an original manner to deal with different users bitrates.

6 Acknowledgment

Authors wish to thank Prof. Jean-Marie Gorce and Dr. Nikolai Lebedev for their discussions and important remarks given following their intensive review for this work.

References

1. K. Pahlavan and A. Levesque, "Wireless data communications," *Proceedings of the IEEE*, vol. 82, no. 9, pp. 1398–1430, sep 1994.
2. "Draft standard for information technology–telecommunications and information exchange between systems–local and metropolitan area networks–specific requirements–part 11: Wireless lan medium access control (mac) and physical layer (phy) specifications. amendment 3: 3650-3700 mhz operation in usa (amendment to ieee 802.11-2007)," *IEEE Unapproved Draft Std P802.11y-D7.0*, 2007.
3. "Ieee tg 15.4, part 15.4:wireless medium access control (mac) and physical layer (phy) specifications for low rate wireless personal area network (lr-wpans), ieee-sa standard board," *IEEE standard for Information Technology*, no. 2, 2006.
4. J. W. Chong, Y. Sung, and D. K. Sung, "Rawpeach: Multiband csma/ca-based cognitive radio networks," *Communications and Networks, Journal of*, vol. 11, no. 2, pp. 175–186, 2009.
5. J. Yun and S. Bahk, "Parallel contention algorithm with csma/ca for ofdm based high speed wireless lans," in *Personal, Indoor and Mobile Radio Communications, 2003. PIMRC 2003. 14th IEEE Proceedings on*, vol. 3, sept. 2003, pp. 2581–2585 vol.3.
6. Y. Xu, M. Huang, M. Lin, and Y. Zheng, "A self-adaptive minimum contention window adjusting backoff algorithm in ieee 802.11 dcf," in *Consumer Electronics*,

Communications and Networks (CECNet), 2012 2nd International Conference on, april 2012, pp. 1577–1582.

7. W. Ru-yan, W. Da-peng, and W. Mian, “Contention aware adaptive backoff mechanism in ieee 802.11 wireless lan,” in *Computational Intelligence and Software Engineering, 2009. CiSE 2009. International Conference on*, dec. 2009, pp. 1–4.
8. S.-W. Kang, J.-R. Cha, and J.-H. Kim, “A novel estimation-based backoff algorithm in the IEEE 802.11 based wireless network,” in *Consumer Communications and Networking Conference (CCNC), 2010 7th IEEE*, jan. 2010, pp. 1–5.
9. M. H. Manshaei and J.-P. Hubaux, “Performance analysis of the IEEE 802.11 distributed coordination function: Bianchi model,” March 2007.
10. F. Tobagi and L. Kleinrock, “Packet switching in radio channels: Part ii—the hidden terminal problem in carrier sense multiple-access and the busy-tone solution,” *Communications, IEEE Transactions on*, vol. 23, no. 12, pp. 1417–1433, dec 1975.
11. M. Fang, “Power evaluation and performance enhancement of csma/ca based wlans,” in *Masters Thesis, Hamilton Institute*, June 2010.
12. G. Bianchi, “Performance analysis of the ieee 802.11 distributed coordination function,” *Selected Areas in Communications, IEEE Journal on*, vol. 18, no. 3, pp. 535–547, march 2000.
13. “Ieee standard for information technology- telecommunications and information exchange between systems- local and metropolitan area networks- specific requirements- part 11: Wireless lan medium access control (mac) and physical layer (phy) specifications,” *ANSI/IEEE Std 802.11, 1999 Edition (R2003)*, pp. i–513, 2003.
14. J. W. Chong, D. K. Sung, and Y. Sung, “Cross-layer performance analysis for csma/ca protocols: Impact of imperfect sensing,” *Vehicular Technology, IEEE Transactions on*, vol. 59, no. 3, pp. 1100–1108, march 2010.
15. H. Kwon, H. Seo, S. Kim, and B. G. Lee, “Generalized csma/ca for ofdma systems: protocol design, throughput analysis, and implementation issues,” *Wireless Communications, IEEE Transactions on*, vol. 8, no. 8, pp. 4176–4187, august 2009.
16. J. W. Chong, Y. Sung, and D. K. Sung, “Analysis of csma/ca systems under carrier sensing error: Throughput, delay and sensitivity,” in *Global Telecommunications Conference, 2008. IEEE GLOBECOM 2008. IEEE*, 30 2008–dec. 4 2008, pp. 1–6.

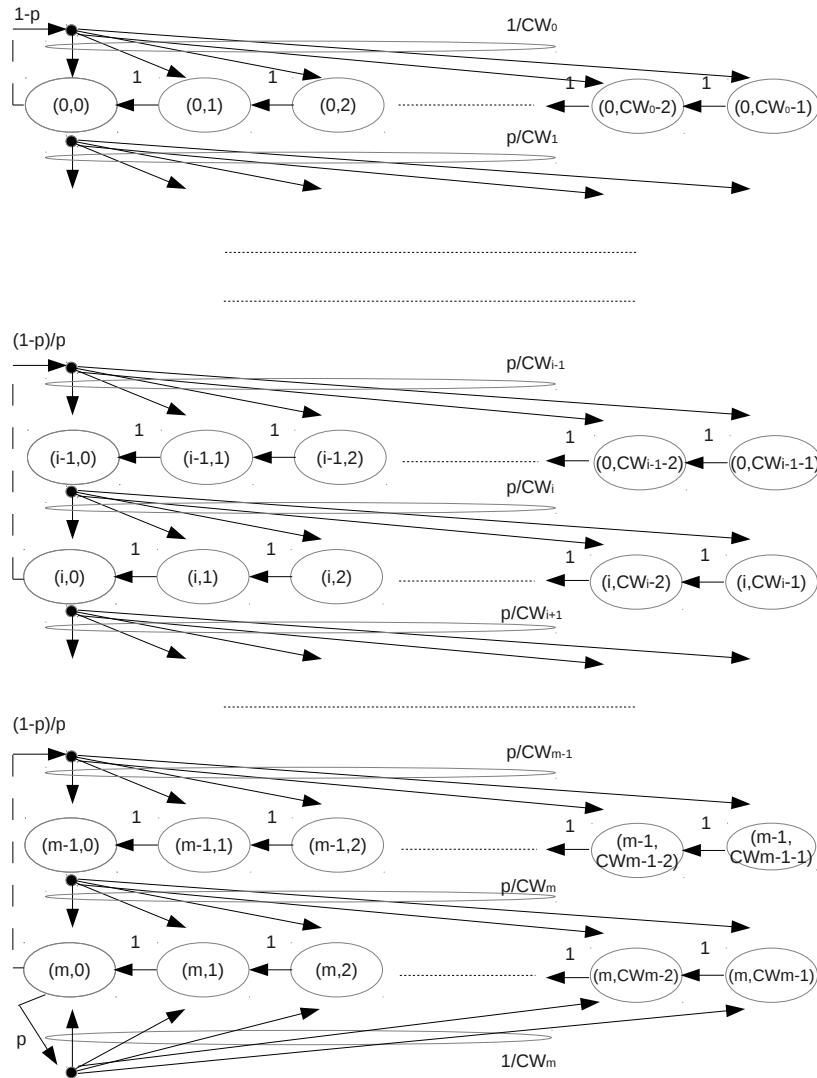


Fig. 2. Markov chain model of backoff window size in proposed CSMA/CA.

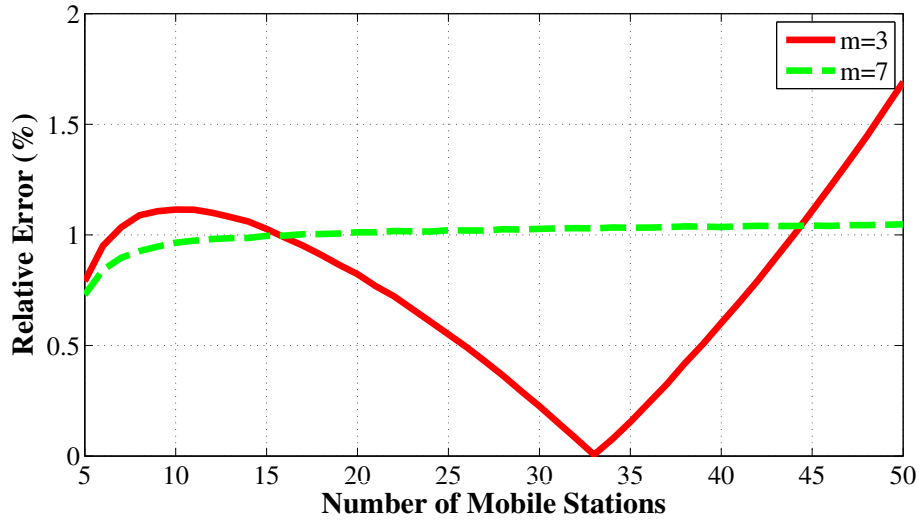


Fig. 3. Relative error vs number of mobile stations.

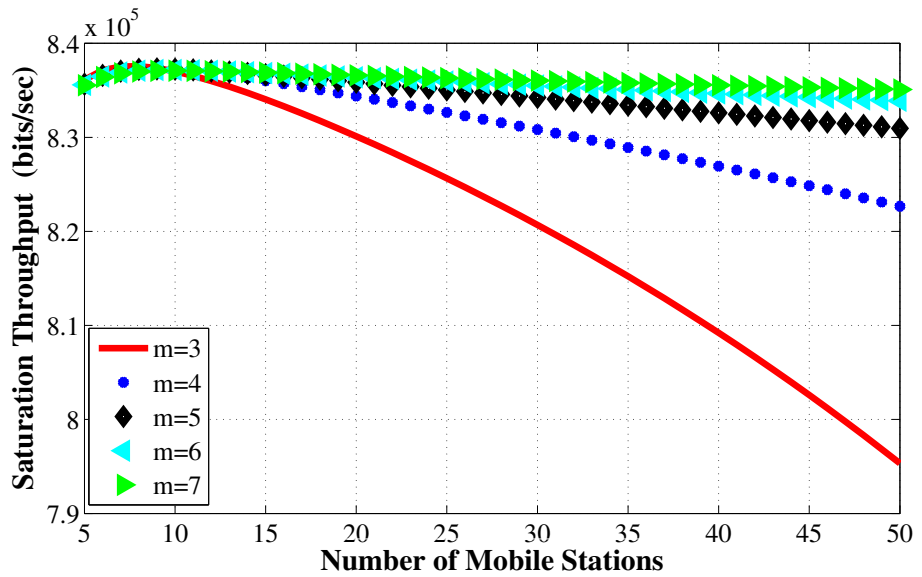


Fig. 4. Saturation throughput for proposed strategy with RTS/CTS transmission.

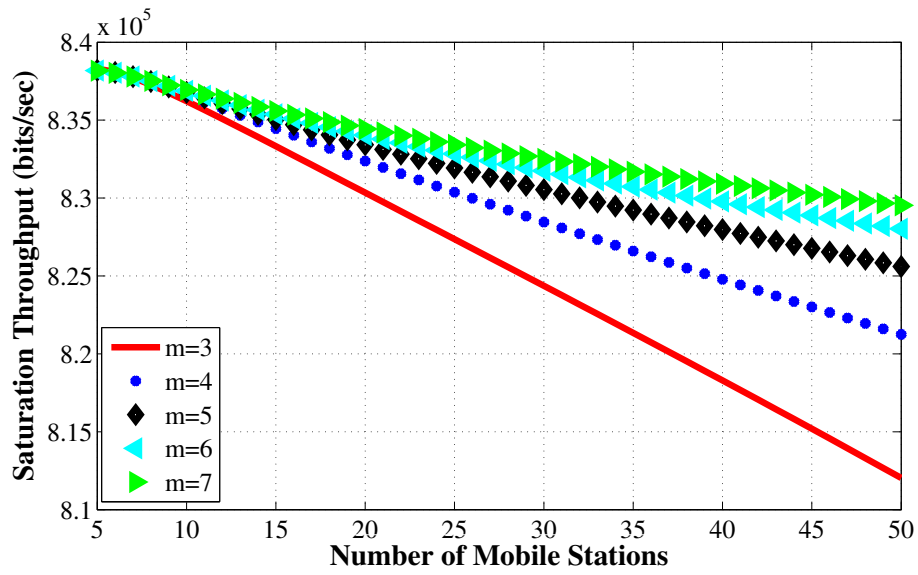


Fig. 5. Saturation throughput for classical 802.11 FH with RTS/CTS transmission.

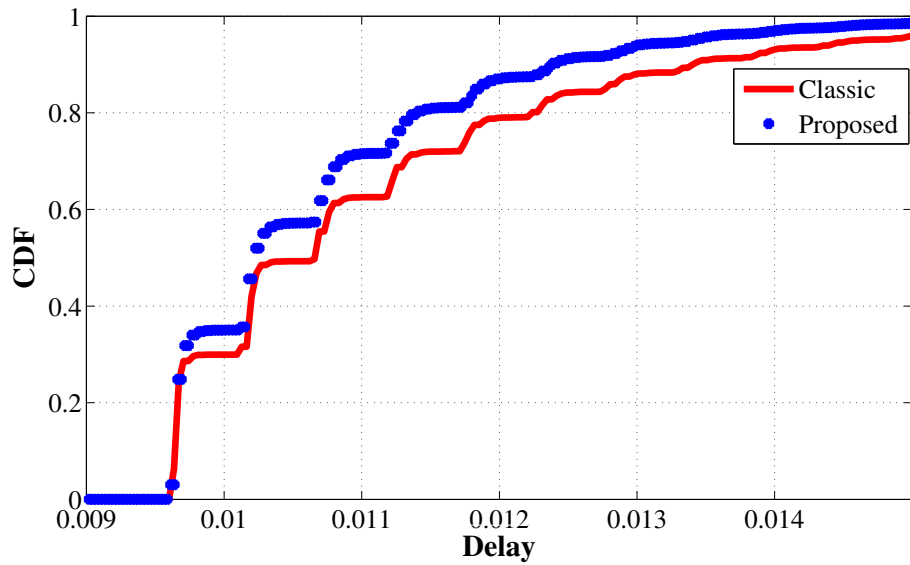


Fig. 6. CDF of access delay for $m = 3$ with 50 mobile stations. Delay is expressed in second.