



HAL
open science

Trade, Wages, and Collective Bargaining: Evidence from France

Juan Carluccio, Denis Fougère, Erwan Gautier

► **To cite this version:**

Juan Carluccio, Denis Fougère, Erwan Gautier. Trade, Wages, and Collective Bargaining: Evidence from France. 2014. hal-01093629

HAL Id: hal-01093629

<https://hal.science/hal-01093629>

Preprint submitted on 10 Dec 2014

HAL is a multi-disciplinary open access archive for the deposit and dissemination of scientific research documents, whether they are published or not. The documents may come from teaching and research institutions in France or abroad, or from public or private research centers.

L'archive ouverte pluridisciplinaire **HAL**, est destinée au dépôt et à la diffusion de documents scientifiques de niveau recherche, publiés ou non, émanant des établissements d'enseignement et de recherche français ou étrangers, des laboratoires publics ou privés.

Trade, wages, and collective bargaining: Evidence from France

Juan Carluccio*
Denis Fougère**
Erwan Gautier***

2014/29

(*) Banque de France et University of Surrey

(**) CNRS, CREST, LIEPP (Sciences Po, Paris), CEPR, IZA et Banque de France

(***) LEMNA-TEPP - Université de Nantes et Banque de France

Trade, Wages, and Collective Bargaining: Evidence from France*

Juan Carluccio**, Denis Fougère*** and Erwan Gautier****

Abstract: We estimate the impact of international trade on wages using detailed data for French manufacturing firms. We instrument firm-level trade flows with firm-specific instrumental variables based on world demand and supply shocks. Both export and offshoring shocks have a positive effect on wages. Exports increase wages similarly for all occupational categories while offshoring has heterogeneous effects. The impact of trade shocks on wages is heterogeneous across bargaining regimes. In firms with collective bargaining, the elasticity of wages with respect to both exports and offshoring is higher than in firms with no collective bargaining. The wage gains associated with collective bargaining are similar across worker categories.

Keywords: exports, offshoring, firm-level wages, collective bargaining.

JEL Codes: F16, J51, E24.

**We thank Laurent Baudry and Amelie Schiprowski for valuable research assistance. We also thank Pierre Cahuc, Chiara Criscuolo, Bruno Decreuse, Fabrice Defever, Peter Egger, Olivier L'Haridon, François Langot, Rémy Lecat, Jakob Munch, Julien Prat, Hans-Jörg Schmerer, and participants in the conferences "Globalization and Labor Market Outcomes" (Paris, 2013), CESifo-Delphi Conference (Munich, 2013), "AMSE-Banque de France" Conference on Labor Market Issues (Paris, 2013), the RES Annual Conference (Manchester, 2014), the "Economic Integration and Labor Markets" Workshop (Paris, 2014) and seminar participants in Banque de France, Copenhagen, Le Mans, Nantes, Nottingham and Rennes for helpful comments and suggestions. The views expressed in this paper do not necessarily reflect those of the Banque de France.*

** Banque de France and University of Surrey. Email address: juan.carluccio@banque-france.fr

*** CNRS, CREST, LIEPP (Sciences Po, Paris), CEPR, IZA and Banque de France. Email address: fougere@ensae.fr

**** LEMNA-TEPP, Université de Nantes and Banque de France. Email address: erwan.gautier@univ-nantes.fr

1. Introduction

What is the impact of globalisation on wages? A flourishing theoretical literature highlights trade-induced variation in firm-specific wages as a fundamental component of wage inequality, predicting heterogeneous effects of trade across tasks, occupations and skills (see Harrison et al., 2011, for a review). This literature points to rent-sharing as a key mechanism through which trade-created revenues are transmitted to wages. In European countries, collective bargaining is the most important formal rent-sharing mechanism and plays a key role in wage determination (Venn, 2009). However, empirical evidence of how collective bargaining shapes the effect of trade on wages is scarce.

In this paper we present a comprehensive empirical study of the impact of exports and offshoring on the wage levels of French manufacturing firms, testing for heterogeneous effects across occupational categories and bargaining levels.

We use a rich dataset obtained by matching several administrative sources providing firm-level information on exports and imports, balance-sheet, hourly wages by occupational category, and firm- and industry-level wage agreements. The detailed trade is broken-down by product (at the HS6 level) and country or origin/destination. It allows us to overcome the potential endogeneity issue arising from unobserved shocks leading firms to simultaneously choose both trade flows and wages. We construct firm-specific instruments for exports and offshoring following the recent work by Hummels et al. (2014) (based on Autor et al., 2013). For each firm, we define a set of potential markets (product-country pairs) based on pre-sample trade flows and use world demand and supply shocks specific to each product-country pair as exogenous shifters. The quality of our instruments requires that the set of potential markets is specific to each firm and stable over time, two conditions that are met in our data. Our results are robust to excluding markets where French firms are dominant, ensuring the exogeneity of the supply and demand shocks used for identification. In our data and as in most trade datasets (e.g., Bernard et al., 2012), exporters tend to be also offshorers, which raises the need to control for export activity in order to identify the effect of offshoring and vice versa. The use of specific firm-level instruments for exports and offshoring allows identification of the potentially different effects of both activities on firms' wages.

Our first empirical contribution is to provide evidence on how trade shocks are transmitted to wage levels. We find that both exports and offshoring shocks have a significantly positive effect on wages, with the elasticity being higher for exports. The results are consistent with recent theories that explain the export wage premium through either rent-sharing (e.g., Egger and Kreckemeier, 2009; Amiti and Davis, 2012; Helpman et al., 2012) or differences in workforce composition (e.g., Yeaple, 2005; Verhoogen, 2008; Bustos, 2011). They are also in line with the view that access to foreign goods through overseas production lowers costs and boosts productivity, resulting in higher wages (Grossman and Rossi-Hansberg, 2008).

We then perform the analysis by occupation. Theories focusing on workforce composition predict exports increase the marginal returns to skills (e.g., by facilitating the adoption of skill-biased technologies) and thus the wages of high-skilled individuals. It suggests heterogeneous effects across occupations, being stronger for occupations that are on average high-skilled (i.e. technical and managerial). Theoretical models of offshoring also predict strong heterogeneous effects. Foreign production reduces the wages of workers whose tasks can be offshored via a substitution effect, but raises the marginal productivity and wages of workers undertaking tasks complementary to the offshored production. Our empirical results show that export shocks have a positive effect on wages for all occupational categories but with no significant differences across categories. On the contrary, we find that offshoring shocks lead to significantly higher wages for technicians and executives, and have no effect on the wages of blue- and white-collars. These findings suggest that, on average, workers in the high-skilled occupations are complements to overseas production, while those in the relatively low-skilled ones are substitutes.

Two important messages arise. First, as predicted by theoretical models with firm heterogeneity, the dispersion in trade shocks generates between-firm dispersion in wages which also holds within occupations. Second, export and offshoring shocks prompt different changes in the production process, with the latter having strong redistribution effects across occupational categories (see Hummels et al., 2014, for similar evidence on Denmark).

Our second contribution is to provide evidence on how the firms' bargaining regime shapes the effect of trade shocks on wages. Collective bargaining is a particularly relevant rent-sharing mechanism in France where the labour market institutions favour collective negotiations and a large share of the workforce is covered by collective wage agreements (Avouyi-Dovi et al., 2013). The French system is very close to that of other European countries (Du Caju et al., 2009), thus, our analysis sheds light on general mechanisms likely at work in other countries.

We classify firms according to whether they are covered by firm-level, industry-level or no collective wage agreements. The main finding is the following: in firms with collective bargaining, the elasticity of wages with respect to both exports and offshoring shocks is higher than in firms with no collective bargaining. These results give support to the idea that, through collective negotiations, a share of the trade-created rents is captured by the workers. They unveil an additional source of trade-induced between-firm wage dispersion that arises from the heterogeneity in bargaining regimes across firms. The data shows differences between exports and offshoring. The effect of exports is positive irrespective of the bargaining regime, and higher under firm- than industry-level bargaining. This result mimics the findings of closed economy studies showing wages tend to be more responsive to profitability shocks under firm- than industry-level bargaining (e.g., Gürtzgen, 2009). We find a negative effect of offshoring shocks in firms without collective agreements. It suggests that, absent formal rent-sharing agreements, the productivity gains associated with offshoring accrue to the firms'

shareholders. Finally, the wage gains are similar across worker categories. Collective bargaining does not appear to reduce the wage inequalities across categories associated with offshoring.

We contribute to the burgeoning empirical literature on trade and wages, which has thus far mainly analysed the impact of exports and offshoring separately (see Feenstra and Hanson, 2003 and Harrison et al., 2011 for surveys), and to a small literature focusing on the role of collective bargaining, notably Kramarz (2010) and Felbermayr et al. (2014). We complement previous works by identifying the distinct effect of both trade activities in the same firm with instrumental variables, by unveiling heterogeneous responses across occupations, and by using detailed data on bargaining regimes. Our results also contribute to the literature on collective bargaining in closed economies (e.g., Dahl et al., 2013), by using trade as exogenous shocks to identify heterogeneous effects according to the bargaining regimes.

Our paper is organised as follows. Section 2 provides a brief theoretical background. Section 3 describes the data sources and the estimating sample. Section 4 presents the empirical model and the construction of the instrumental variables. Section 5 studies how trade shocks affect firm-level wages, on average and by occupation. Section 6 focuses on the role of the bargaining regime. Section 7 concludes.

2. Theoretical background

A large body of theoretical work studying the impact of trade on wages has flourished in recent years. This literature focuses on the impact of trade on wage dispersion between firms. It constitutes a major departure from traditional trade theories that placed the emphasis on wage differences between occupations and sectors. These theories generate a rich set of predictions linking firm-specific wages to firms' trade participation that provide the background of our empirical analysis.

The literature builds upon the seminal contribution by Melitz (2003) that features firm heterogeneity in productivity and fixed export costs. Trade liberalisation reallocates market shares towards the more productive firms and raises their profits, while it leads the least productive ones to exit. In the original Melitz model, the heterogeneity in profits and trade status of firms does not translate into wage heterogeneity because all workers are homogenous and labour markets are frictionless. Theoretical models generating wage variation between firms depart from those assumptions and can be roughly classified in two groups: “workforce composition” and “rent-sharing”.

The first set of papers allows for worker heterogeneity in skills while maintaining the assumption of competitive labour markets. Wages reflect marginal productivities. Firms that enter the export market adopt more skilled-intensive technologies that raise returns to skills in those firms. In equilibrium, exporters employ better workers and pay higher average wages than non-exporters. Representative

examples of this class of models are those by Yeaple (2005) and Bustos (2011).¹ The effects of offshoring are also heterogeneous across workers, and depend on how each type of worker interacts with the imported goods in the production process. Offshoring boosts the marginal productivity and demand for workers with tasks complementary to the imported goods, affecting their wages positively. It leads to wage and employment losses for workers who are substitutes to the imported goods (Feenstra and Hanson, 1999). It is generally assumed that skilled workers are complementary to offshored production.

The second group of models generates a true “trade wage premium” since wages are above marginal productivities. Rent-sharing implies wages are an increasing function of profits and arises in the presence of labour market frictions. Models of the exporter wage premium with rent-sharing are based on fair wage considerations (Egger and Kreickemeier, 2009; Egger et al., 2013; Amiti and Davis, 2012), efficiency wages (Davis and Harrigan, 2011) or search-and-matching frictions with individual bargaining (Felbermayr et al., 2011; Helpman et al., 2012). Offshoring wage premia can also be generated through rent-sharing mechanisms because offshoring lowers costs and raises profits, creating a surplus that can be shared with workers. The “productivity effect” of offshoring has been formalised by Grossman and Rossi-Hansberg (2008) and is in line with available evidence on the effects of imported inputs on productivity (Amiti and Konings, 2007). Amiti and Davis (2012) develop a Melitz-type model with fair wages. Sethupathy (2013) models bilateral bargaining between workers and offshoring firms.

A set of models studies collective bargaining as a particular rent-sharing mechanism, with wages determined through bargaining between firms and trade unions. The general prediction is that reductions in trade costs lead to a positive correlation between exports and wages (e.g., Naylor, 1998 and 1999, Bustos and Kreickemeier, 2009). There is an established literature modelling the wage effects of offshoring when wages are set through collective bargaining. Offshoring provides the firm with an outside option in the bargain, leading to heterogeneous wage effects across workers. When local and foreign workers are substitutes, the threat of moving production abroad constrains union wage demands, generating a negative relationship between offshoring and union wages. The opposite effect is expected when local and foreign workers are complements (Skaksen and Sorensen, 2001 and Lommerud et al., 2009).

The effect of collective bargaining on wages is the subject of an extensive literature. Of interest to our analysis is how the level of centralisation of bargaining affects wage outcomes (e.g., Calmfors and Driffill, 1988). A general prediction is that wages are more tightly linked to profits under firm-level than under more centralised bargaining levels (i.e. industry or national), because trade unions are concerned with idiosyncratic profitability shocks (see Gürtzgen, 2009 for empirical evidence). Most

¹ Verhoogen (2008) highlights the role of quality upgrading, and Burstein and Vogel (2012) and Harrigan and Reshef (*forthcoming*) assume more productive firms use more skill-intensive technologies.

available evidence shows wage levels are higher under firm- than under industry-level bargaining, especially in countries with multi-level bargaining systems (e.g., Card and de la Rica, 2006; Plasman et al., 2007; Dahl et al., 2013). Another relevant issue is whether collective bargaining reduces inequalities within firms by compressing the wage distribution. The general consensus is that this is the case, as illustrated in the textbook treatment of Cahuc et al. (2014) and the empirical survey in Card et al. (2004).

3. Data

We match data from four administrative sources with firm-level information on imports and exports, balance-sheet data, wages, and collective wage agreements. We now describe the data sources and explain the construction of our estimating sample. Table 1 presents the data sources succinctly.

[Insert Table 1]

3.1 Data sources

Trade data

The trade data come from an exhaustive administrative file collected by the French Customs. The yearly value of imports (by country of origin and product) and exports (by country of destination and product) are reported for all firms over the period 1996-2009. Trade flows are originally classified at the CN 8-digit level (EU - Combined Nomenclature) but we aggregate them at the 6-digit level of the Harmonised System (HS6) to construct our instruments. We restrict our sample to imports and exports of manufactured goods by manufacturing firms.²

The theory reviewed in Section 2 points out that the effect of offshoring on wages potentially differs according to whether the imported goods complement or substitute for activities that can be undertaken within the firm. In light of this, for each firm in our sample we want to have an empirical measure of offshoring that captures the transfer abroad of production activities that were carried out (or could have been carried out) by the same firm in France. Within the firm, these goods produced with foreign labour are more likely to substitute for domestic labour. In order to construct such measure we apply the methodology developed by Feenstra and Hanson (1999) which has become standard in the offshoring literature (Biscourp and Kramarz, 2007, also apply it to French data). The idea is to include only imports of goods that are close to the final output produced by the firm. In practice, for each firm in the sample we keep only those imported goods that belong to the industry

² We exclude raw materials (HS01-15, 23, 25-27, 31 and 41) e.g., “Vegetable products”, “Mineral products”, “Fertilizers” and “Works of art, collector’s pieces and antiques”, and “Services” (HS97-99). Excluded trade flows are about 5% of the total value of French imports and exports.

where the firm operates.³ We then sum the remaining imports flows for each firm and each year, obtaining the firm-year measure of offshoring that we use throughout the paper.⁴ Feenstra and Hanson (1999) and Hummels et al. (2014) label this “narrow offshoring”, but for simplicity we use the term “offshoring” throughout. The above definition should be kept in mind when interpreting the results. For robustness check, we provide the results obtained using total imports as a measure of offshoring in the Appendix.

Balance sheet data

The administrative BRN dataset (“*Bénéfices Réels Normaux*”) is constructed from tax records and provides us with balance-sheet information on sales, employment, material usage, capital stock and main sector of activity at the 5-digit NAF Rev2 level (NAF = French classification of economic activities, the first four digits of which are identical to the NACE Rev2 classification). It includes over 60% of French firms and accounts for over 90% of the value of trade flows in the Customs dataset. We use the BRN data to estimate firm-level total factor productivity (TFP) as the residual of a two-factor (capital and labour) Cobb-Douglas production function, separately for each 2-digit industry using data on 1,026,147 observations over the period 1994-2009. Our preferred measure uses the Levinsohn and Petrin (2003) method.

Wage data

The administrative dataset DADS (“*Déclarations Annuelles de Données Sociales*”) comes from firms’ social security records. For the period 2005-2009 and for every plant with at least one employee, it provides the number of workers and hourly wages, both overall and for each of the following occupations: “Administrative and commercial executives (including engineers)”, “Technicians and supervisors”, “White-collar employees”, “Production (blue collar) workers”. Occupational categories are defined on the “*Nomenclature des professions et catégories socioprofessionnelles*” (PCS).⁵ The number of temporary contracts at the firm that we use as a control also comes from DADS.

Wage agreements data

We use comprehensive information on wage agreements signed at both the firm- and industry- levels, for each firm and year in the period 1994-2009. The data comes from the French Ministry of Labour

³ More specifically, we use a concordance table provided by Eurostat (from the RAMON Metadata Server) to map HS6 codes into the European product classification CPA2008. The CPA2008 is identical to the French product classification CPFRev2. Finally, we use concordance tables from INSEE to map CPFRev2 product codes into NAFRev2 4-digit industry codes (see “Balance sheet data”). With this classification in hand, for each firm we drop all imports of HS6 codes that do not map into their NAF code.

⁴ To have a better understanding of this measure, take for example the HS6 code 701932 “Thin sheets of (voiles) of Glass Fibres”. When this code is imported by firms in the NAF code 2314 “Manufacture of Glass Fibers” we keep these imports in our measure of offshoring for those firms. When the same code is imported by the firms in the NAF code 2399 “Manufacture of other non-metallic mineral products” we exclude it from the offshoring measure for these firms.

⁵ Although this variable refers to occupations, it has often been used to proxy for the workers’ skill level (e.g., Cahuc et al., 2006).

and it is exhaustive, given the legal obligation to report on all concluded firm-level agreements. Variables included are the date and topics of the agreements. Agreements can cover a variety of topics other than wages (see Table A in the Appendix for details). We focus on firm-level agreements dealing with wages because they are more likely to affect the wage-setting process and also because wages are the most frequent topic dealt with (over 70%). We also have information on wage agreements at the industry-level for the 300 largest industries (*branches* in French) for 1994-2009, constructed by Avouyi-Dovi et al. (2013).

3.2 Estimating sample

Our estimating sample is obtained by matching the above datasets using a common firm identifier. We clean the data in the following way. We drop outliers of hourly wages (overall and by occupation) and of sales per employee.⁶ The data show the existence of a substantial share of firms with marginal trade activity. We normalise export and offshoring values by total sales, and look at their distribution in our sample. Both distributions exhibit a large mass of observations with very low values: the 5th percentile of the export-to-sales ratio is 0.2%, whereas the median is 15% (0.03% and 3% for offshoring). Firms with negligible exposure to international trade can contaminate our results as potential outliers. In light of this we drop firm-year observations for which the export-to-sales or the offshoring-to-sales ratio are below the 5th percentile of the distribution.⁷

We include firms only in the years in which they both import and export, a restriction required for the implementation of our IV strategy (defined below). Hence, our study focuses on how changes in the intensive margin of trade affect wages. Our results need to be interpreted as informative of how wages are affected by shocks allowing firms to deepen their trade activities conditional on the firm being exporter and importer. Obtaining results applying to all firms would require accounting for the endogeneity of entry into the export and import markets (i.e., the “extensive margin”). Such strategy would require at least one instrumental variable that predicts the change in trade status of firms. Such instrument is difficult to obtain in absence of a major policy change. Furthermore, identification of the extensive margin is made difficult by the limited variation in trade status over time. Firms that both export and import tend to do it continuously over the period 1996-2009, with a mass of firms that never enter foreign markets in our sample (Figure A in the Appendix).

Our estimating sample contains 23,269 observations corresponding to 8,123 firms and accounts for over two thirds of the total value of both exports and imports of the Customs dataset. The sample period is 2005-2009 because our dependent variables (i.e. firm-level hourly wages) are only available for those years (Table 1). It exhibits large between-firm variation in both trade and wages, but limited within-firm variability. Identification will mainly come from differences between firms rather than

⁶ We define outliers as observations below the 1st percentile or above the 99th percentile of the distribution.

⁷ In Table B in the Appendix we report robustness checks using different thresholds of trade intensity (instead of 5% and including no trimming). We obtain similar results.

from variations over time for a given firm. This feature of the data is not the consequence of the relatively short sample period: very similar patterns emerge over the longer period 1996-2009 (Table C in the Appendix). Hauptmann and Schmerer (2013) also raise a similar issue for German firms.

Table 2 reports descriptive statistics based on our estimating sample. Exports and offshoring increased steadily from 2005 to 2008, before dropping sharply in 2009. The hourly wage of blue- and white-collar workers increased on average by a little less than 3% whereas the hourly wage of supervisors and executives slightly dropped in 2009. We will test whether our results are robust to the Great Recession by reporting results excluding the year 2009 as robustness checks.

[Insert Table 2]

4. Empirical model

This section describes the empirical model and the instrumentation strategy.

4.1 Wage equation

Our baseline wage equation is the following:

$$\ln w_{it} = \beta_{exp} \ln exp_{it} + \beta_{off} \ln off_{it} + \beta_x x_{it} + \alpha_i^w + \lambda_t^w + \varepsilon_{it} \quad (1)$$

where for the firm i in year t $\ln w_{it}$ is the log net hourly wage, $\ln exp_{it}$ the log exports and $\ln off_{it}$ the log offshoring. x_{it} is a vector of covariates including the local unemployment rate and firm-level controls in year t (number of employees, TFP, domestic sales, proportion of temporary workers, share of skilled workers and capital-labour ratio). α_i^w is a random firm-specific effect, λ_t^w is a year dummy (common to all firms) and ε_{it} is an i.i.d. random term (white noise) with mean 0 and variance σ_ε^2 . Slope parameters β_{exp} and β_{off} are interpreted as elasticities of wages with respect to firm exports and offshoring.

The identification strategy will mainly exploit between-firm variation, consistently with trade theories of firm heterogeneity. To control for observable firm heterogeneity we add disaggregate industry (4-digit)-level dummies and adopt a Mundlak's formulation of the linear panel data model, by adding the firm's average TFP and the firm's average capital/labour ratio to the list of regressors. Since all these supplementary variables are time-invariant, we assume a random firm-specific effect α_i^w . The Mundlak formulation allows for possible correlations between the time-varying explanatory variables and the firm-specific fixed effects.

The theoretical works reviewed in Section 2 predict the relationship between trade and wages can be heterogeneous according to worker categories and bargaining regimes. We will estimate equation (1) using average wages, then separately by occupational category and by bargaining regime.

4.2 Instrumentation strategy

We face a potential endogeneity issue: unobservable shocks might simultaneously affect wages, export and offshoring flows in a given firm and a given year, making OLS estimates of β_{exp} and β_{imp} inconsistent. To reduce these potential biases we use instrumental variables that reflect exogenous shocks to the profitability of exporting and offshoring and are uncorrelated with firm-level wage-setting. A recent strand of literature shows such instruments can be constructed using demand and supply shocks from the rest of the world (e.g., Autor et al., 2013, Hummels et al., 2014). The underlying idea is the following. A shock to the demand of a given product p in a given country c would translate into higher imports into country c of this particular product p . French firms exporting the product p to country c would raise their exports to that country. Similarly, increases in world exports of product p by country c reflect increases in the competitiveness of country c for the product p (which can be due to exogenous variations in productivity, costs or product quality in country c). French firms importing product p from country c would respond to this shock by increasing their imports of product p from the country c . Exogeneity is ensured by the fact that demand and supply shocks in foreign locations are independent of French firms' wage determination.

World demand WD_{it} and world supply WS_{it} addressed to firm i in year t are:

$$WD_{it} = \sum_{c,p} s_{icp} WD_{cpt} \qquad WS_{it} = \sum_{c,p} s_{icp} WS_{cpt}$$

where WD_{cpt} and WS_{cpt} are respectively world demand and supply for a product-country pair at time t computed using data at the 6-digit level of the Harmonised System HS from the BACI dataset constructed by CEPII.⁸ We calculate the firm-specific shares s_{icp} of each pair (product p , country c) in total exports (respectively, offshoring) using average shares of the products actually exported (respectively, imported) in the period 1996-2004. We choose to use pre-samples values to reduce endogeneity concerns. For the few firms entering foreign markets within our sample period, we calculate these shares for the first year in which the firm reports positive trade (and we include the firm in the sample from its second year onwards).⁹

The quality and the precision of our instrumentation strategy depend on whether the set of product-country pairs entering WD_{it} and WS_{it} is stable over time. Over the period 1996-2009, firm-level export and offshoring flows tend to be concentrated in one main (HS6) product and one country. The two main products represent on average 83% of firm-level exports, and the two main product-country pairs account for 57% (90% and 80% for offshoring respectively, see Table D in the Appendix).

⁸The BACI dataset is constructed using bilateral trade data at HS 6-digit level from COMTRADE. It can be downloaded at http://www.cepii.fr/CEPII/en/bdd_modele/presentation.asp?id=1

⁹ As a robustness check, we have also computed instruments using shares calculated over the period 1996-2009 as in Berman et al. (2012). Results are very similar.

Furthermore, the average firm changes its main product only once during the sample period (often replaced with a very close product). The set of products and countries that constitute the firms' potential markets is quite stable over time. Our instrumentation strategy that relies on pre-sample trade composition to compute firm-specific world demand and supply is satisfactory.

A second concern is whether the instruments provide enough between-firm variation for identification. If the set of product-country pairs is specific to each firm, world demand and supply shocks will affect each firm differently. To look into this feature of the data, for every firm in the sample we identify the two most important product-country pairs, defined as those that account for the highest share in total exports. We then compute the frequency of firms having the same two most important product-country pairs (we do the same for offshoring). The median is 2 firms for exports and 3 firms for offshoring (see Table E in the Appendix for further details). The set of product-country pairs are quite specific to each firm.¹⁰

Our instrumentation equation is:

$$\ln exp_{it} = \gamma_{WD}^{exp} \ln WD_{it} + \gamma_{WS}^{exp} \ln WS_{it} + \gamma_{exp} x_{it} + \alpha_i^{exp} + \lambda_t^{exp} + \epsilon_{it} \quad (2.A)$$

$$\ln off_{it} = \gamma_{WD}^{off} \ln WD_{it} + \gamma_{WS}^{off} \ln WS_{it} + \gamma_{off} x_{it} + \alpha_i^{off} + \lambda_t^{off} + \zeta_{it} \quad (2.B)$$

where x_{it} is a vector of firm-level controls identical to the one used for the estimation of (1). λ_t^{exp} and λ_t^{off} are year dummies (common to all firms), and ϵ_{it} and ζ_{it} are i.i.d. random terms (white noises) with mean 0 and variances σ_ϵ^2 and σ_ζ^2 , respectively. The estimation of (2.A) and (2.B) yield consistent estimates of $\ln exp_{it}$ and $\ln off_{it}$ which are denoted $\ln \widehat{exp}_{it}$ and $\ln \widehat{off}_{it}$.¹¹

[Insert Table 3]

Table 3 reports the results. They constitute the first-stage regressions of our empirical strategy. Results are reported with and without the vector of controls x_{it} , but including firm-specific fixed effects and year dummies in all cases. Robust standard errors are clustered at the firm level. As expected, world demand (respectively, supply) has a positive and statistically significant effect on exports (respectively, offshoring). The values of the F-statistics indicate that these instruments are not weak. The estimates show that size, productivity, and capital- and skill-intensity are associated with larger values of firm-level offshoring and exports, consistent with firm heterogeneity theories of international

¹⁰ A similar issue can arise if world demand and supply shocks are highly correlated between countries. This could happen if shocks in large countries drive most of the variability in world demand and supply. As robustness check, we ran equations (2.A) and (2.B) excluding France's three largest trade partners (China, Germany and the United States) which represent about 30% of total French exports and imports. We obtain similar results (Table F in the Appendix).

¹¹ We have also tested exchange rates as possible instruments but they were found to have a small or even insignificant impact on exports and imports (results are reported in Table G in Appendix). This is due to the large share of French trade within the Euro area (about 50%), implying a small variability in average exchange rates. Moreover, this instrument varies only with the country and time dimensions.

trade. Their inclusion reduces the magnitude of the coefficient associated with the instruments, without affecting their significance levels.

The validity of the above results relies on the exogeneity of world demand and supply shocks. Shocks to French firms can trigger demand and supply responses in markets where French firms have a large market share, challenging the exogeneity of WD_{it} and WS_{it} . For robustness we use the BACI data to compute the market shares of French firms in each product-country-year cell, for exports and for offshoring. We then run equations (2.A) and (2.B) dropping product-country-year observations for which the French market shares are over 10%, 15%, or 20%, obtaining very similar results (see Table H in the Appendix).

5. How does trade affect wage levels?

In this section we study the impact of international trade on firm-level wages. We start by looking at average firm-level wages, and we then examine heterogeneity across occupations.

5.1 Results on average firm-level wages

As discussed in Section 2, the first message that comes out of recent theoretical works is that firm-level wages should be affected by firm-level trade. Most theoretical models predict exports should have a positive effect, irrespective of the particular underlying channel (i.e. composition or rent-sharing). The effect of offshoring is a priori ambiguous because it results from the combination of two opposing forces. Offshoring might boost productivity and raise profits, positively affecting wages (the “productivity effect”). However, offshoring can replace tasks previously carried out by domestic workers, leading to lower wages for those workers.

In Figure 1 we pool all observations in our sample and plot the firm-level average hourly wages (in euros) as a function of percentiles of the distribution of exports and offshoring per employee. Both variables are positively correlated with firm-level wages. At the aggregate level and without any controls, the positive effect of offshoring on wages seems to dominate.

[Insert Figure 1]

We now proceed to a formal econometric analysis. In Table 4 we report the results obtained for different specifications of equation (1). The dependent variable is the log hourly net wage rate in firm i and year t . Columns (1) and (3) report OLS estimates, respectively without and with firm-level controls. Columns (2) and (4) report the second stage of OLS-IV estimates, where exports and offshoring (in logs) are instrumented through the first-stage regressions reported in Table 3. Robust standard errors are clustered at the firm level.

The main finding is that both exports and offshoring have a highly significant positive effect on wages. This result is in line with the theoretical prediction concerning the effects of exports on average

wages, and suggests the positive effects of offshoring dominate the negative ones (as was already suggested by Figure 1). The introduction of firm-level controls substantially decreases the size of both elasticities, from 0.02 to 0.01 in the case of exports and from 0.01 to 0.004 in the case of offshoring. Hummels et al. (2014) argue that including firm-level performance covariates controls for the indirect impact of trade on wages through enhanced productivity. Under this view, columns (3) and (4) provide the effects of exports and offshoring net of this “productivity effect”. Even when adding firm-level controls we find a positive and significant impact of both trade activities on wages.¹² These average results might mask heterogeneity across worker categories. We explore such hypothesis in the next subsection.

[Insert Table 4]

5.2 Results by occupation

A second message arising from the literature survey is that the impact of trade on wages can potentially vary with the workers’ occupation and skills. Models based on “workforce composition” predict export shocks should lead to the adoption of skill-biased technology and increase the marginal returns to skills. A higher elasticity in the case of high-skilled occupations (i.e., technicians and executives) would be in line with the idea that export shocks increase the marginal productivity of high-skilled workers and their wages. The impact of offshoring is potentially quite different. The theory suggests it should also be heterogeneous across workers, being positive for those who are complements to the imported goods, and negative for those who are substitutes. Our hypothesis is that high-skilled occupations, such as engineers and executives, are more likely to be complements to offshoring, whereas low-skilled occupations, mainly production workers, are more likely to be substitutes.

[Insert Figure 2]

In Figure 2 we repeat the analysis conducted in Figure 1, but this time separately for each of the four occupational categories. It is clear that the positive correlation between exports and wages exists for all occupations. The relationship between offshoring and wages seems to be much steeper for technicians and executives, which provides a motivation for running the basic wage regressions of equation (1) separately by occupational categories.

[Insert Table 5]

Table 5 presents the results. The dependent variable is the log hourly average net wage rate of occupation o in firm i and year t . All regressions include the full set of firm-level covariates.

¹² Results are robust to the exclusion of the year 2009 (Table I in the Appendix) and to using total imports instead of “offshoring” (Table J in the Appendix).

The results are striking. The elasticity of wages with respect to exports is similar for all occupations and for both estimation techniques (about 0.005). The results do not show evidence of redistribution effects across groups of workers due to foreign demand shocks. The offshoring results are quite different: offshoring has no impact on the average wage of blue- and white-collar workers but leads to significantly higher wages for technicians (elasticity of 0.004) and executives (elasticity of 0.007). As we have argued, it is reasonable to expect these occupations to be more likely to be complements to offshoring. The results in Table 5 thus suggest that a better access to foreign goods through offshoring generates a substantial reorganisation of home production, which on average benefits the most skilled occupations.¹³ Unlike previous studies (e.g., Hummels et al 2014) we do not find negative effects on the low-skilled occupations. One possible explanation that we explore in the next section might be related to the role of wage bargaining institutions in affecting wage outcomes.

Our estimates show that trade shocks generate between-firm dispersion in wages, both on average and within occupations. One main theoretical explanation of such a link is the following: trade generates dispersion in firm revenues which are then transmitted to wages via a rent-sharing mechanism. Collective bargaining is a rent-sharing mechanism which we believe to be particularly relevant in France (as in many European countries).

6. How does collective bargaining shape the effect of trade on wages?

The institutional features of collective wage bargaining in France are very similar to that of other European countries (Du Caju et al., 2009). Wages can be set at three different levels: (i) at the national level, a binding minimum wage is set by the government; (ii) at the industry-level, employers' organisations and unions bargain on wage scales by occupational categories; (iii) at the firm level, employers and unions bargain on wage increases that can be uniform for all employees or specific to occupational categories. There is a strict hierarchy between the different levels of wage bargaining: a collective agreement must set forth, broaden or enhance an agreement which has been previously signed at a higher bargaining level. Industry-level wage agreements cover around 75% the firms in our sample and firm-level wage agreements cover about 20% (Table 2).

In France, the occurrence of wage agreements is persistent over time within firms. To study whether the effect of trade on wages differs according to the wage bargaining regime we group firms in three different regimes: 1) firms not covered by any type of wage agreement (or covered only very infrequently), 2) firms frequently covered only by industry-level agreements, and 3) firms that frequently sign firm-level agreements. We consider that a firm is "frequently" covered by an agreement of either type if it reports agreements in over 20% of the years it appears in the sample (20% is the sample average frequency).

¹³ Results are also robust to the exclusion of the year 2009 (Table K in the Appendix) and to considering total imports instead of "offshoring" (Table L in the Appendix).

We estimate equation (1) separately for firms in each regime, first by considering average firm-level wages, then for each occupational category.¹⁴

6.1 Results by bargaining level: average firm-level wages

The rent-sharing hypothesis leads us to expect a higher elasticity in firms with collective bargaining, indicating a stronger transmission of trade shocks to wages. Table 6 presents the results. To save space we report only the OLS-IV estimates, where exports and offshoring are instrumented through the first-stage regressions reported in Table 3.

[Insert Table 6]

The main message of the table is the following: in firms with collective bargaining the elasticity of wages with respect to both exports and offshoring shocks is higher than in firms with no collective bargaining (i.e., comparing across columns). It provides support to the idea that, through collective agreements, firms share the trade-created rents with workers in the form of higher wages. One important consequence is that the heterogeneity in bargaining regimes (Table 2) adds an additional source of wage dispersion between firms.

Interestingly, the effect of exports is estimated to be highest under firm-level bargaining (0.010 versus 0.015 with firm-level agreements). The theoretical survey of Section 2 tells us that the elasticity of wages to profitability shocks should be higher the more decentralised the bargaining level: wages are more tied to profits under firm- than industry-level bargaining. Our results, by using exports shocks as measures of exogenous demand shocks, contribute to the closed economy literature that has mainly focused on comparing wage levels across bargaining regimes (e.g., Card and de la Rica, 2006; Plasman et al. 2007; Dahl et al., 2013).

A second interesting result concerns offshoring. In Table 4 of Section 5 we found that, pooling all firms irrespectively of their bargaining regimes, offshoring affects wages positively. The comparison with Table 6 shows that the average effect arises from the combination of heterogeneous responses according to the bargaining regime. Wages are negatively affected by offshoring shocks in firms without collective agreements: the elasticity is -0.001 for 2005-2009 and -0.004 when we exclude the crisis year 2009. Wages are positively affected in firms covered by industry-level agreements (elasticity 0.004). By affecting their marginal productivity differently, offshoring leads to wage losses for workers who are substitutes to foreign production and to wage gains for those who are complements. With rent-sharing, workers extract a larger share of the surplus created by offshoring adding a positive effect on wages. This mechanism can lead to an overall positive effect of offshoring under collective bargaining.

¹⁴ Regimes are assumed to be exogenous since there is no instrument available.

Overall our estimates support the idea that bargaining results in wage gains. One open question is whether such gains accrue to all worker categories or they are reaped by some occupations, for instance because of differences in bargaining power.

6.2 Results by bargaining level and by occupation

Table 7 presents estimates of equation (1) separately for firms in each regime and for each occupational category. A key general result is that the elasticity of wages with respect to trade shocks is higher under collective bargaining for all categories.

[Insert Table 7]

The regressions by occupation confirm that the export premium is largest under firm-level bargaining. In particular, for blue-collar workers, the elasticity of wages to export shocks goes from 0.004 without collective bargaining, to 0.011 when there is a firm-level wage agreement. This difference is broadly similar for other worker categories (with the exception of white-collar workers for which the gains are zero).

Our results also reveal interesting patterns concerning offshoring. For the low-skilled occupations (i.e., blue- and white-collars) the effect of offshoring on wages is negative in firms with no collective agreements (being stronger and more significant for 2005-2008), and zero or slightly positive in firms with collective agreements. For the high-skilled occupations (i.e., technicians and executives) it goes from zero to positive. Quantitatively, the difference in the elasticity across regimes is similar for all categories (around 0.004 points). Collective bargaining does not appear to reduce the wage differences across occupations arising from offshoring shocks, but rather to shift wages up for all worker types.¹⁵

For robustness, we looked at whether the results are driven by agreements on wages and not by agreements on other topics. We find that the effect of exports is higher in firms that frequently bargain on any topic, but that such result is driven mainly by the existence of wage agreements (see Table N in the Appendix).¹⁶

7. Conclusion

In this paper we study how trade affect firm-level wage levels using rich data for French manufacturing firms. We provide results on the effect of exports and offshoring shocks on average wages, analysing heterogeneous effects across occupations and bargaining regimes. We use our detailed trade data to construct firm-specific instrumental variables based on world demand and supply shocks. This strategy allows us to overcome potential endogeneity biases arising from unobservable shocks leading firms to adjust wages and trade flows simultaneously.

¹⁵ Similar results are obtained when we replace « offshoring » by « total imports » (Table M in the Appendix).

¹⁶ There is no difference of the effect of offshoring on wages with or without firm-level agreements. The main difference comes from being or not covered by collective bargaining (i.e., firm- or industry-level agreements) as shown above.

We first focus on the following question “How does trade affect wage levels?” We find that both exports and offshoring have a positive impact on average wages, with the elasticity being higher for export (0.010) than for offshoring (0.004). This result is in line with the theoretical predictions of models of the exporter wage premium and suggests the positive effects of offshoring (e.g., through enhanced productivity) dominate the negative ones related to the substitution of domestic labour.

We then study whether there is heterogeneity according to occupational categories. The elasticity of wages to export shocks is similar across all worker categories (about 0.005). The impact of offshoring varies across worker types: it is close to zero for blue- and white-collars and positive and significant for technicians and executives (with elasticities of 0.004 and 0.007 respectively). It provides support to the hypothesis that unskilled workers tend to be substitutes to offshoring and skilled ones to be complements.

We conclude with an analysis of whether collective bargaining shapes the transmission of trade shocks to wages. We find that the elasticity of wages to both exports and offshoring shocks is higher in firms with collective bargaining than in firms with no collective bargaining. The effect of exports is higher under firm- than under industry-level bargaining (elasticities are 0.015 with firm-level agreements and 0.010 without). Concerning offshoring, the estimates shows a negative impact in firms without collective agreements and a positive impact in firms covered by industry-level agreements. As theoretical models predict, collective agreements shift trade-created rents to workers in the form of higher wages. The wage gains associated with collective bargaining are found to be similar across occupations.

Overall, our results support the predictions of firm heterogeneity models stating that trade generates between-firm dispersion in wages. Furthermore, such between-firm dispersion is enhanced by the heterogeneity in bargaining regimes across firms, generating heterogeneous transmission of trade shocks to wages.

References

- Amiti M. and Davis D. R., 2012, "Trade, Firms, and Wages: Theory and Evidence," *The Review of Economic Studies*, 79(1), 1-36.
- Amiti M., and Konings J., 2007, "Trade Liberalization, Intermediate Inputs, and Productivity: Evidence from Indonesia", *American Economic Review*, 97(5), 1611-1638.
- Autor D., Dorn D., and Hanson G.H., 2013, "The China Syndrome: Local Labor Market Effects of Import Competition in the U.S.," *American Economic Review*, 103(6), 2121-2168.
- Avouyi-Dovi S., Fougère D., and Gautier E., 2013, "Wage Rigidity, Collective Bargaining and the Minimum Wage: Evidence from French Agreement Data," *The Review of Economics and Statistics*, 95(4), 1337-1351.
- Bastos P., and Kreckemeier U., 2009, "Unions, Competition and International Trade in General Equilibrium," *Journal of International Economics*, 79 (2), 238-247.
- Berman N., Berthou, A., and Hericourt, J., 2012, "Export Dynamics and Sales at Home," *CEPR Discussion Paper* No 8684
- Bernard, A., Jensen, B. Redding, S. and Schott, P., 2012, "The Empirics of Firm Heterogeneity and International Trade," *Annual Review of Economics*, 4, 283-313
- Biscourp, P. and Kramarz, F. 2007, "Employment, Skill structure and International Trade: Firm-level Evidence for France," *Journal of International Economics*, vol. 72(1), pages 22-51.
- Burstein A., and Vogel J., 2012, "International Trade, Technology, and the Skill Premium", mimeo, Columbia University.
- Bustos P., 2011, "The Impact of Trade Liberalization on Skill Upgrading: Evidence from Argentina," Working Paper 559, Barcelona Graduate School of Economics.
- Cahuc P., Postel-Vinay F., and Robin J.-M., 2006, "Wage Bargaining with On-the-Job Search: Theory and Evidence," *Econometrica*, 74(2), 323-64.
- Cahuc P., Carcillo, S. and Zylberberg A., 2014, "Labor Economics", MIT Press, Second edition.
- Calmfors L., and Driffill J., 1988, "Bargaining Structure, Corporatism, and Macroeconomic Performance," *Economic Policy*, 6, 14-61.
- Card D., Lemieux T., and Riddell W.C., 2004, "Unions and Wage Inequality", *Journal of Labor Research*, 25, 4, 519-559.

- Card D., and de la Rica S., 2006, "Firm-level Contracting and the Structure of Wages in Spain," *Industrial and Labor Relations Review*, 59,573-93.
- Dahl C. M., Le Maire D., and Munch J., 2013, "Wage Dispersion and Decentralization of Wage Bargaining," *Journal of Labor Economics*, 31, 501-533.
- Davis D. R., and Harrigan J., 2011, "Good Jobs, Bad Jobs, and Trade Liberalization," *Journal of International Economics*, 84(1), 26–36.
- Du Caju P., Gautier E., Momferatou D. and Ward-Warmedinger M., 2009, "Institutional Features of Wage Bargaining in 23 European Countries, the US and Japan," *Ekonomia*, 12(2), 57-108.
- Egger, H., Egger, P. and Kreickemeier, U., 2013. "Trade, Profits, and Wages," *European Economic Review*, 64(C), 332-350.
- Egger H., and Kreickemeier U., 2009, "Firm Heterogeneity and the Labor Market Effects of Trade Liberalization," *International Economic Review*, 50(1), 187-216.
- Feenstra R. C. and Hanson G.H., 1999, "The Impact of Outsourcing and High-Technology Capital on Wages: Estimates for the U.S., 1972-1990," *The Quarterly Journal of Economics*, 114(3), 907-940.
- Feenstra R. C. and Hanson G.H., 2003 "Global Production Sharing and Rising Inequality: A Survey of Trade and Wages." In *Handbook of International Trade*, edited by E. Kwan Choi and James Harrigan, 146–85. Malden, MA: Blackwell Publishing
- Felbermayr G., Prat J., and Schmerer H.-J., 2011, "Globalization and Labor Market Outcomes: Wage Bargaining, Search Frictions, and Firm Heterogeneity," *Journal of Economic Theory*, 146(1), 39-73.
- Felbermayr G., Hauptmann A. and Schmerer, H. J., 2014, "International Trade and Collective Bargaining Outcomes: Evidence from German Employer-Employee Data," *Scandinavian Journal of Economics*, 116(3), 820–837.
- Grossman G. M., and Rossi-Hansberg E., 2008, "Trading Tasks: A Simple Theory of Offshoring," *American Economic Review*, 98(5), 1978-97.
- Gürtzgen N., 2009, "Rent-Sharing and Collective Bargaining Coverage - Evidence from Linked Employer-Employee Data," *Scandinavian Journal of Economics*, 111, 323-349.
- Harrigan J., and Reshef A., forthcoming, "Skill Biased Heterogeneous Firms, Trade Liberalization and the Skill Premium," *Canadian Journal of Economics*.
- Harrison A., McLaren J., and McMillan M., 2011, "Trade and Inequality," *Annual Review of Economics*, 3, 261-89.
- Hauptman A. and Schmerer H. J., 2013, "Do Exporters Pay Fair Wage Premiums?" *Economics Letters*, 121(2), 179-182.

- Helpman E., Itskhoki O., Muendler M.-A., and Redding S., 2012, "Trade and Inequality: from Theory to Estimation", *NBER Working Paper* 17991.
- Hummels D., Jørgensen R., Munch J. R. and Xiang C., 2014, "The Wage Effects of Offshoring: Evidence from Danish Matched Worker-Firm Data," *American Economic Review* 104(6): 1597-1629.
- Kramarz F., 2010, "Offshoring, Wages, and Employment: Evidence from Data Matching Imports, Firms, and Workers," mimeo, CREST, Paris.
- Levinsohn J. and Petrin A., 2003, "Estimating Production Functions Using Inputs to Control for Unobservables," *Review of Economic Studies*, 70(2), 317-341.
- Lommerud K. E., Meland F. and Straume O. R., 2009, "Can deunionization lead to international outsourcing?" *Journal of International Economics*, 77(1), 109-119.
- Melitz M. J., 2003. "The Impact of Trade on Intra-Industry Reallocations and Aggregate Industry Productivity," *Econometrica*, 71(6), 1695-1725.
- Naylor R., 1998, "International Trade and Economic Integration When Labour Markets are Generally Unionised," *European Economic Review*, 42(7), 1251-1267.
- Naylor R., 1999, "Union Wage Strategies and International Trade," *Economic Journal*, 109(452), 102-125.
- Plasman R., Rusinek M. and Rycx F., 2007, "Wages and the Bargaining Regime Under Multi-level Bargaining: Belgium, Denmark and Spain," *European Journal of Industrial Relations*, 13(2), 161-180.
- Sethupathy G., 2013, "Offshoring, Wages, and Employment: Theory and Evidence," *European Economic Review*, 62, 73-97.
- Skaksen J. R., and Sorensen M. Y., 2001, "Should Trade Unions Appreciate Foreign Direct Investment?" *Journal of International Economics*, 55(2), 379-390.
- Venn D., 2009, "Legislation, Collective Bargaining and Enforcement: Updating the OECD Employment Protection Indicators," Working Paper OECD N°89.
- Verhoogen E. A., 2008, "Trade, Quality Upgrading, and Wage Inequality in the Mexican Manufacturing Sector," *The Quarterly Journal of Economics*, 123(2), 489-530.
- Yeaple S. R., 2005, "A Simple Model of Firm Heterogeneity, International Trade, and Wages," *Journal of International Economics*, 65(1), 1-20.

Table 1: Data Sources

Name (source)	Period	Main variables
DADS – firm level (INSEE)	2005-2009	<ul style="list-style-type: none"> - Average hourly wages by occupation (blue collar, white collar, technicians and executives) - Total hours worked by occupation - Nr of employees with a temporary contract
“Douanes” (French Customs)	1996-2009	Firm-level flows of exports and imports (in euros) collected at the product level (HS 6) and by country of destination or origin
Firm-level agreements (Ministry of Labour)	1994-2009	Dummy variables equal to 1 if there is an agreement in a given firm in a given year, 0 otherwise. Main topics of the agreement (wages, union rights...)
Industry-level agreements (Avouyi-Dovi et al.,2013)	1994-2009	Dummy variable equal to 1 if there is a wage agreement in a given industry in a given year, 0 otherwise. Cover about 300 of the largest industries (“branches”).
BRN (INSEE)	1996-2009	<p>Firms’ detailed balance sheets</p> <ul style="list-style-type: none"> - Main variables: sales, nr of employees, materials... - Used to construct TFP estimates
BACI (CEPII)	1996-2009	Flows of exports (supply) and imports (demand) by country and at the product level (by year, for all countries)

Table 2: Descriptive statistics on trade and wages

Year	2005	2006	2007	2008	2009
Trade (in millions Euros)					
- Exports	72,184.8	72,937.9	70,521.6	72,209.2	65,105.1
- Offshoring	21,655.8	19,946.5	20,330.7	19,699.5	20,340.2
- Total imports	47,655.1	47,981.9	48,765.3	47,648.9	41,479.3
Average hourly wage (in Euros)					
- All workers	15.48	15.81	16.28	16.82	17.04
- Blue-collar workers	11.75	12.07	12.46	12.91	13.29
- White-collar workers	12.64	12.94	13.38	13.90	14.38
- Technicians and supervisors	17.13	17.37	17.90	18.35	18.12
- Executives	29.58	29.96	30.66	31.84	30.44
Coverage of wage agreements (in %)					
Firm wage agreement	17.0	18.4	20.7	22.7	20.1
Industry wage agreement	71.4	84.5	86.4	88.6	75.6

Notes: We compute the sum (by year) of exports and offshoring for the firms observed in our sample (in millions of Euros). “Offshoring” is defined as the value of imports of goods belonging to the same industry as that of the importing firm (see Section 3 for details). The average hourly wage is calculated as the average hourly wage by job category and by year for the firms of our sample. The coverage of wage agreements is calculated as the number of firms covered by a wage agreement in a given year, divided by the total number of firms.

Table 3: First-stage IV regressions

Dependent variable	Exports		Offshoring	
World demand (exports)	0.150*** (0.040)	0.101*** (0.032)	0.141*** (0.052)	0.075* (0.046)
World supply (imports)	0.148*** (0.033)	0.112*** (0.029)	0.257*** (0.054)	0.201*** (0.053)
TFP		0.375*** (0.021)		0.209*** (0.045)
Firm size		0.761*** (0.044)		0.517*** (0.068)
Capital/labour ratio		0.159*** (0.029)		0.073* (0.043)
Share of high-skilled workers		0.006 (0.078)		0.288** (0.125)
Domestic sales		-0.037** (0.019)		0.257*** (0.039)
Intercept	10.865*** (0.521)	6.912*** (0.538)	7.937*** (0.728)	3.503*** (0.830)
Year dummies	Yes	Yes	Yes	Yes
F-statistic for the IV	105.2	95.5	52.0	41.4
Observations	23,269	23,269	23,269	23,269
Number of firms	8,123	8,123	8,123	8,123
Average obs. per firm	2.9	2.9	2.9	2.9
Within R-squared	0.041	0.114	0.025	0.055
Between R-squared	0.048	0.490	0.025	0.285
Overall R-squared	0.044	0.499	0.022	0.287

Notes: *** $p < 0.01$, ** $p < 0.05$, * $p < 0.1$. Period: 2005-2009. Robust standard errors are clustered at the firm level and reported in brackets. Year dummies and firm fixed-effects are included in all specifications. “Exports” is the log of the value of exports. “Offshoring” is the log of the value of imports of goods belonging to the same industry as that of the importing firm (see Section 3 for details). Firm-level controls (size, TFP, capital/labour and domestic sales) are in logs. Product shares entering world demand and world supply are calculated at their overall sample (1996-2004) firm value.

Table 4: Firm-level average hourly wage regressions (all workers)

Dependent variable	Net hourly wage			
	(1)	(2)	(3)	(4)
Exports	0.014*** (0.001)	0.022*** (0.001)	0.007*** (0.001)	0.010*** (0.001)
Offshoring	0.006*** (0.001)	0.012*** (0.001)	0.003*** (0.001)	0.004*** (0.001)
TFP			0.024*** (0.003)	0.023*** (0.003)
Firm size			-0.002 (0.003)	-0.008*** (0.003)
Capital/labour			0.013*** (0.003)	0.013*** (0.003)
Share of high-skilled workers			0.380*** (0.011)	0.377*** (0.011)
Unemployment rate			-0.000 (0.001)	-0.000 (0.001)
Temporary contracts			-0.034*** (0.010)	-0.035*** (0.010)
Domestic sales			0.003* (0.002)	0.003 (0.002)
Intercept	2.519*** (0.024)	2.347*** (0.023)	1.859*** (0.023)	1.835*** (0.024)
Controls	No	No	Yes	Yes
IV	No	Yes	No	Yes
Observations	23,269	23,269	23,269	23,269
Number of firms	8,123	8,123	8,123	8,123
R-squared	0.351	0.365	0.632	0.632

Notes: *** p<0.01, ** p<0.05, * p<0.1; Period: 2005-2009. Robust standard errors are clustered at the firm level and reported in brackets. Year and disaggregate industry-level dummies, random firm-level effects are included in all specifications. “Net hourly wage” is the log of the average hourly wage in the firm. “Exports” is the log of the value of exports. “Offshoring” is the log of the value of imports of goods belonging to the same industry as that of the importing firm (see Section 3 for details). Firm-level controls (size, TFP, capital/labour and domestic sales) are in logs.

Table 5: Firm-level wage regressions (by occupation)

Dependent variable	Net hourly wage							
	Blue collar		White-collar		Technicians		Executives	
	OLS	OLS-IV	OLS	OLS-IV	OLS	OLS-IV	OLS	OLS-IV
Exports	0.004*** (0.001)	0.004*** (0.001)	0.005*** (0.001)	0.007*** (0.001)	0.003** (0.001)	0.002* (0.001)	0.004*** (0.002)	0.003** (0.002)
Offshoring	0.000 (0.001)	-0.001 (0.001)	0.000 (0.001)	0.000 (0.001)	0.003*** (0.001)	0.004*** (0.001)	0.004*** (0.001)	0.007*** (0.001)
TFP	0.021*** (0.004)	0.021*** (0.004)	0.012*** (0.004)	0.011** (0.004)	0.029*** (0.004)	0.029*** (0.004)	0.032*** (0.005)	0.032*** (0.005)
Firm size	0.019*** (0.003)	0.020*** (0.003)	0.021*** (0.003)	0.018*** (0.003)	-0.008** (0.003)	-0.008** (0.003)	0.013*** (0.004)	0.012*** (0.004)
Capital/labour	0.009** (0.004)	0.009** (0.004)	0.016*** (0.005)	0.016*** (0.005)	0.012** (0.005)	0.012** (0.005)	-0.002 (0.007)	-0.002 (0.007)
Share of high-skilled workers	0.028*** (0.009)	0.029*** (0.009)	-0.006 (0.010)	-0.008 (0.010)	-0.119*** (0.012)	-0.120*** (0.012)	-0.052*** (0.014)	-0.055*** (0.014)
Unemp. rate	-0.002*** (0.001)	-0.002*** (0.001)	-0.000 (0.001)	-0.000 (0.001)	-0.001 (0.001)	-0.001 (0.001)	0.001 (0.001)	0.001 (0.001)
Temporary contracts	-0.049*** (0.011)	-0.049*** (0.011)	-0.071*** (0.014)	-0.072*** (0.014)	-0.077*** (0.015)	-0.078*** (0.015)	-0.035* (0.020)	-0.037* (0.020)
Domestic sales	0.004* (0.002)	0.004* (0.002)	0.002 (0.004)	0.002 (0.004)	0.003 (0.003)	0.003 (0.003)	0.009** (0.004)	0.007* (0.004)
Intercept	1.989*** (0.024)	1.991*** (0.024)	2.144*** (0.025)	2.135*** (0.026)	2.364*** (0.032)	2.360*** (0.032)	2.683*** (0.039)	2.675*** (0.039)
IV	No	Yes	No	Yes	No	Yes	No	Yes
Observations	23,269	23,269	23,269	23,269	23,269	23,269	23,269	23,269
Nr of firms	8,123	8,123	8,123	8,123	8,123	8,123	8,123	8,123
R-squared	0.416	0.416	0.258	0.258	0.186	0.186	0.186	0.187

Notes: *** p<0.01, ** p<0.05, * p<0.1; Period: 2005-2009. Robust standard errors are clustered at the firm level and reported in brackets. Year and disaggregate industry-level dummies, random firm-level effects are included in all specifications. “Net hourly wage” is the log of the average hourly wage by job occupation in the firm. “Exports” is the log of the value of exports. “Offshoring” is the log of the value of imports of goods belonging to the same industry as that of the importing firm (see Section 3 for details). Firm-level controls (size, TFP, capital/labour and domestic sales) are in logs.

Table 6: Firm-level wage regressions by wage bargaining regime (all workers)

Dependent variable	Net hourly wage					
	2005-2009			2005-2008		
Firm wage agreement	No	No	Yes	No	No	Yes
Industry wage agreement	No	Yes	-	No	Yes	-
Exports	0.010*** (0.002)	0.010*** (0.001)	0.015*** (0.003)	0.011*** (0.002)	0.010*** (0.001)	0.015*** (0.003)
Offshoring	-0.001 (0.002)	0.004*** (0.001)	0.002 (0.002)	-0.004* (0.002)	0.003*** (0.001)	0.003* (0.002)
TFP	0.021** (0.010)	0.021*** (0.004)	0.024*** (0.005)	0.023** (0.011)	0.016*** (0.004)	0.017*** (0.005)
Firm size	-0.014** (0.006)	-0.010*** (0.004)	-0.007 (0.007)	-0.016** (0.008)	-0.012*** (0.004)	-0.009 (0.007)
Capital/labour	0.022** (0.011)	0.012*** (0.005)	0.009 (0.008)	0.022* (0.013)	0.014*** (0.005)	0.009 (0.008)
Share of high-skilled workers	0.498*** (0.021)	0.381*** (0.013)	0.413*** (0.038)	0.503*** (0.024)	0.425*** (0.016)	0.462*** (0.059)
Unemployment rate	0.001 (0.001)	-0.000 (0.001)	-0.000 (0.001)	0.002 (0.002)	0.001 (0.001)	0.001 (0.002)
Temporary contracts	-0.041 (0.029)	-0.046*** (0.012)	-0.041 (0.029)	-0.028 (0.031)	-0.052*** (0.013)	-0.058** (0.025)
Domestic sales	0.026** (0.012)	0.004 (0.003)	-0.004 (0.004)	0.027*** (0.010)	0.005* (0.003)	-0.003 (0.003)
Intercept	1.841*** (0.044)	1.865*** (0.030)	1.810*** (0.065)	1.808*** (0.048)	1.835*** (0.032)	1.760*** (0.064)
Controls	Yes	Yes	Yes	Yes	Yes	Yes
IV	Yes	Yes	Yes	Yes	Yes	Yes
Observations	3,509	14,683	5,077	2,726	12,181	4,138
Number of firms	2,556	6,124	1,293	1,964	5,586	1,260
R-Squared	0.625	0.604	0.736	0.622	0.617	0.749

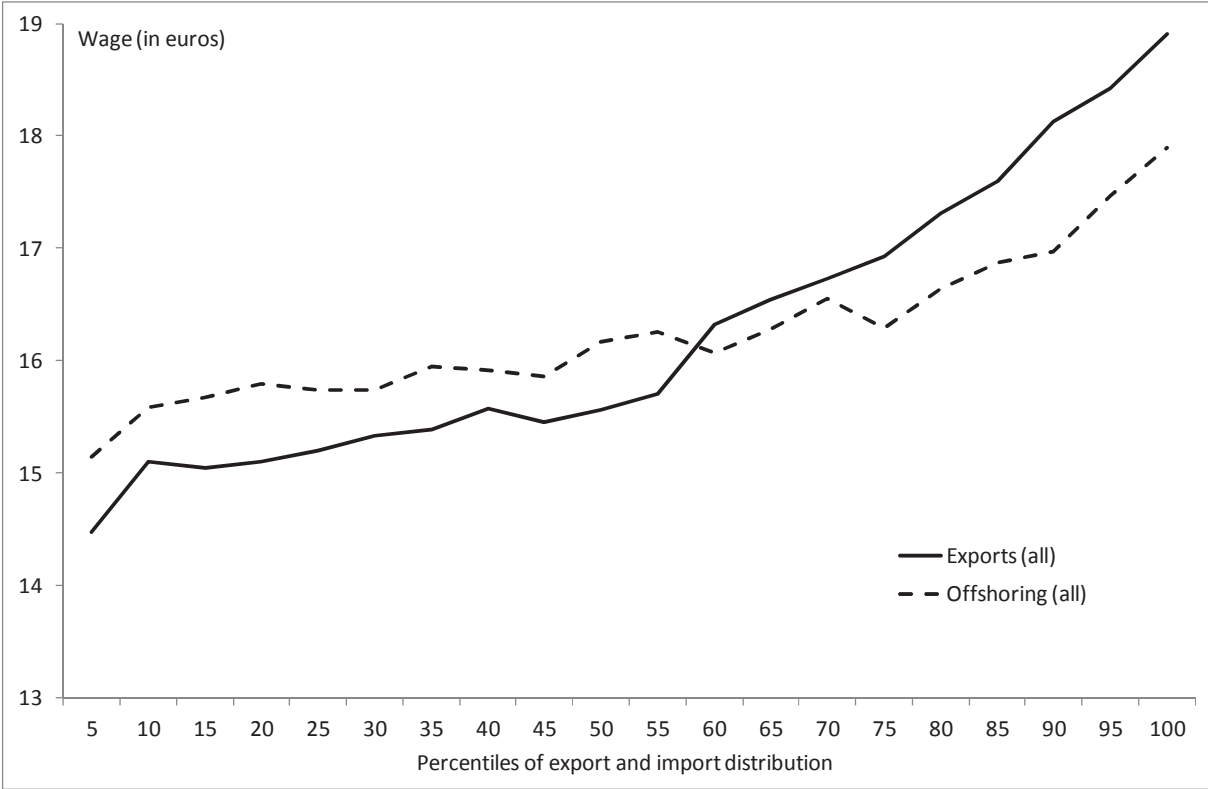
Notes: *** p<0.01, ** p<0.05, * p<0.1; Period: 2005-2009 and 2005-2008. Robust standard errors are clustered at the firm level and reported in brackets. Year and disaggregate industry-level dummies, random firm-level effects are included in all specifications. “Net hourly wage” is the log of the average hourly wage in the firm. “Exports” is the log of the value of exports. “Offshoring” is the log of the value of imports of goods belonging to the same industry as that of the importing firm (see Section 3 for details). Firm-level controls (size, TFP, capital/labour and domestic sales) are in logs. The category “Firm-level wage agreement” is defined according to the frequency of firm-level wage agreements for a given firm, “Yes” corresponds to firms that agree on wages more than 20% of years over the period 2002-2009, “No” less than 20% of wage agreements over the same period. The category “Industry-level wage agreement” means that a firm is covered by an industry-wage agreement in a given year.

Table 7: Firm-level wage regressions by bargaining regime and by occupation

Dependent variable	Net hourly wage					
	2005-2009			2005-2008		
Firm wage agreement	No	No	Yes	No	No	Yes
Industry wage agreement	No	Yes	-	No	Yes	-
<i>Blue-collar workers</i>						
Exports	0.004* (0.002)	0.003*** (0.001)	0.011*** (0.003)	0.005** (0.002)	0.003** (0.001)	0.011*** (0.003)
Offshoring	-0.003 (0.002)	-0.001 (0.001)	-0.001 (0.002)	-0.005** (0.002)	-0.002** (0.001)	0.000 (0.002)
R-Squared	0.424	0.346	0.538	0.407	0.343	0.539
<i>White-collar workers</i>						
Exports	0.006** (0.003)	0.007*** (0.001)	0.006* (0.003)	0.009*** (0.003)	0.006*** (0.002)	0.008** (0.004)
Offshoring	-0.004* (0.002)	-0.000 (0.001)	0.003 (0.002)	-0.007*** (0.002)	-0.000 (0.001)	0.004* (0.002)
R-Squared	0.276	0.202	0.364	0.248	0.189	0.374
<i>Technicians and supervisors</i>						
Exports	0.005* (0.003)	0.002 (0.002)	0.007** (0.003)	0.002 (0.003)	0.001 (0.002)	0.007** (0.003)
Offshoring	0.000 (0.002)	0.004*** (0.001)	0.003 (0.002)	0.000 (0.003)	0.004*** (0.001)	0.004* (0.002)
R-Squared	0.208	0.168	0.340	0.210	0.172	0.346
<i>Executives</i>						
Exports	0.004 (0.004)	0.002 (0.002)	0.011*** (0.004)	0.005 (0.004)	0.001 (0.002)	0.011*** (0.004)
Offshoring	0.002 (0.003)	0.009*** (0.002)	0.006** (0.003)	-0.001 (0.004)	0.009*** (0.002)	0.007** (0.003)
R-Squared	0.192	0.161	0.317	0.195	0.167	0.330
Observations	3,509	14,683	5,077	2,726	12,181	4,138
Number of firms	2,556	6,124	1,293	1,964	5,586	1,260

Notes: *** p<0.01, ** p<0.05, * p<0.1; Period: 2005-2009 and 2005-2008. Robust standard errors are clustered at the firm level and reported in brackets. Year and disaggregate industry-level dummies, random firm-level effects and firm-level control variables (TFP,...) are included in all specifications. “Net hourly wage” is the log of the average hourly wage in the firm. “Exports” is the log of the value of exports. “Offshoring” is the log of the value of imports of goods belonging to the same industry as that of the importing firm (see Section 3 for details). The category “Firm-level wage agreement” is defined according to the frequency of firm-level wage agreements for a given firm, “Yes” corresponds to firms that agree on wages more than 20% of years over the period 2002-2009, “No” less than 20% of wage agreements over the same period. The category “Industry-level wage agreement” means that a firm is covered by an industry-wage agreement in a given year.

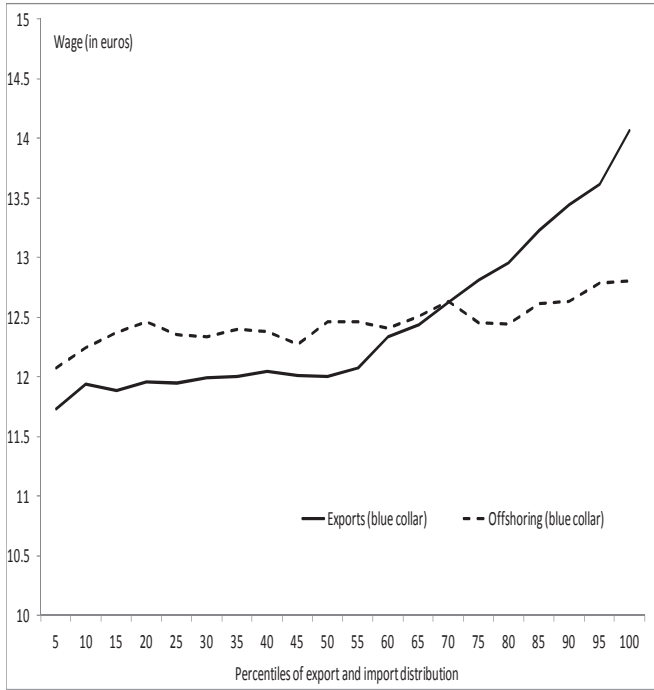
Figure 1: Average hourly net wage by percentiles of the export and offshoring distribution



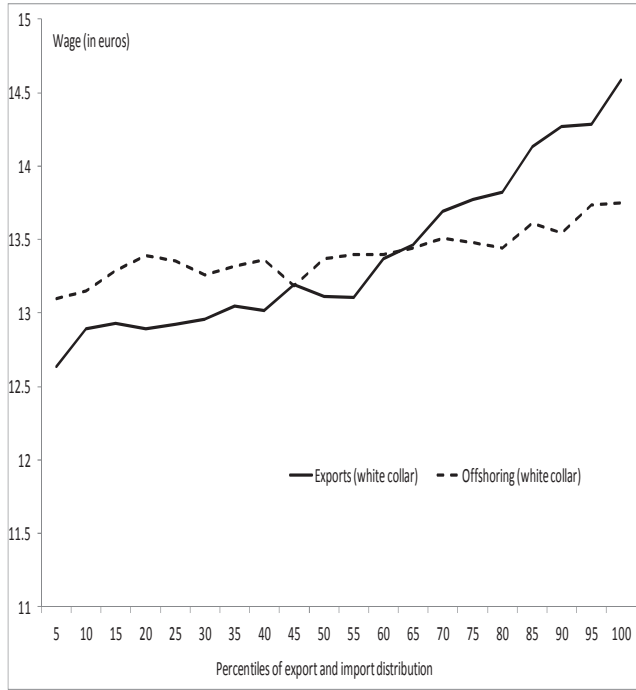
Notes: We report the average hourly wage in euros as a function of percentiles of the export and offshoring distribution. “Offshoring” is defined as imports of goods belonging to the same industry as that of the importing firm (see Section 3 for details). We use export and offshoring per employee to control for wage differences due to firm size differences. We then compute percentiles of the sample distribution and calculate the average hourly wage at each percentile of the export and import distributions. Period: 2005-2009.

Figure 2: Average hourly net wage by percentiles of the export and offshoring distribution

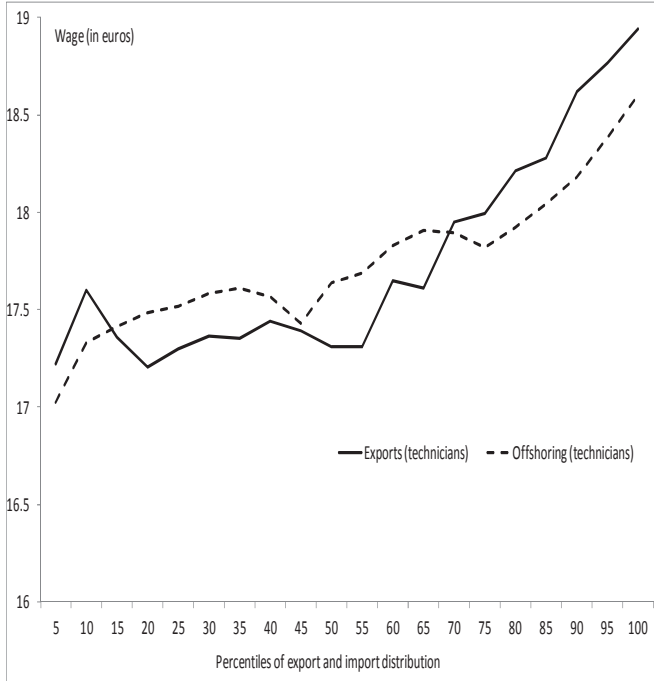
Blue-collar workers



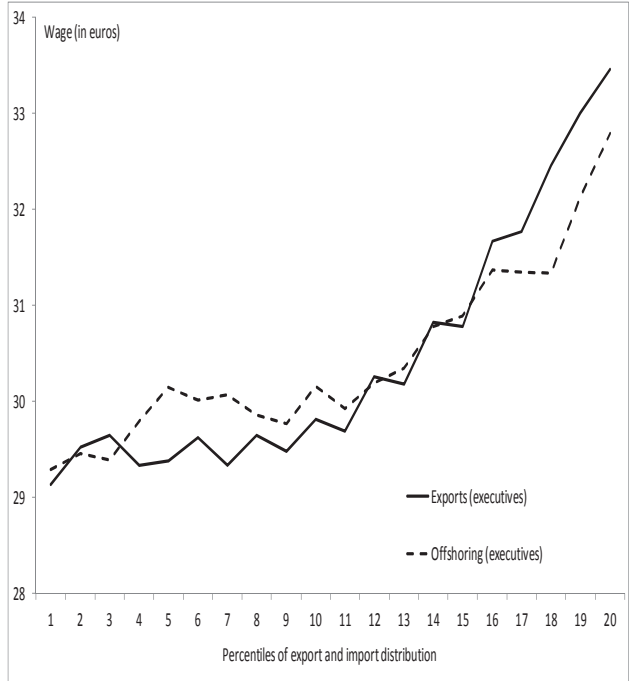
White-collar workers



Technicians and supervisors



Executives



Notes: We report the average hourly wage in euros as a function of percentiles of the export and offshoring distribution. “Offshoring” is defined as imports of goods belonging to the same industry as that of the importing firm (see Section 3 for details). We use export and offshoring per employee to control for wage differences due to firm size differences. We then compute percentiles of the sample distribution and calculate the average hourly wage at each percentile of the export and import distributions. Period: 2005-2009.

APPENDIX (for online publication)

Table A: Firm-level agreements by topic

Topic	Percentage
Wages	70.03
Union rights	8.51
Sex discrimination	4.81
Employment	3.42
On-the-job training	2.40
Human resources management	2.09
Disabled workers	2.04
Labour conditions	1.97
Job classifications	1.76
Other topics	2.96

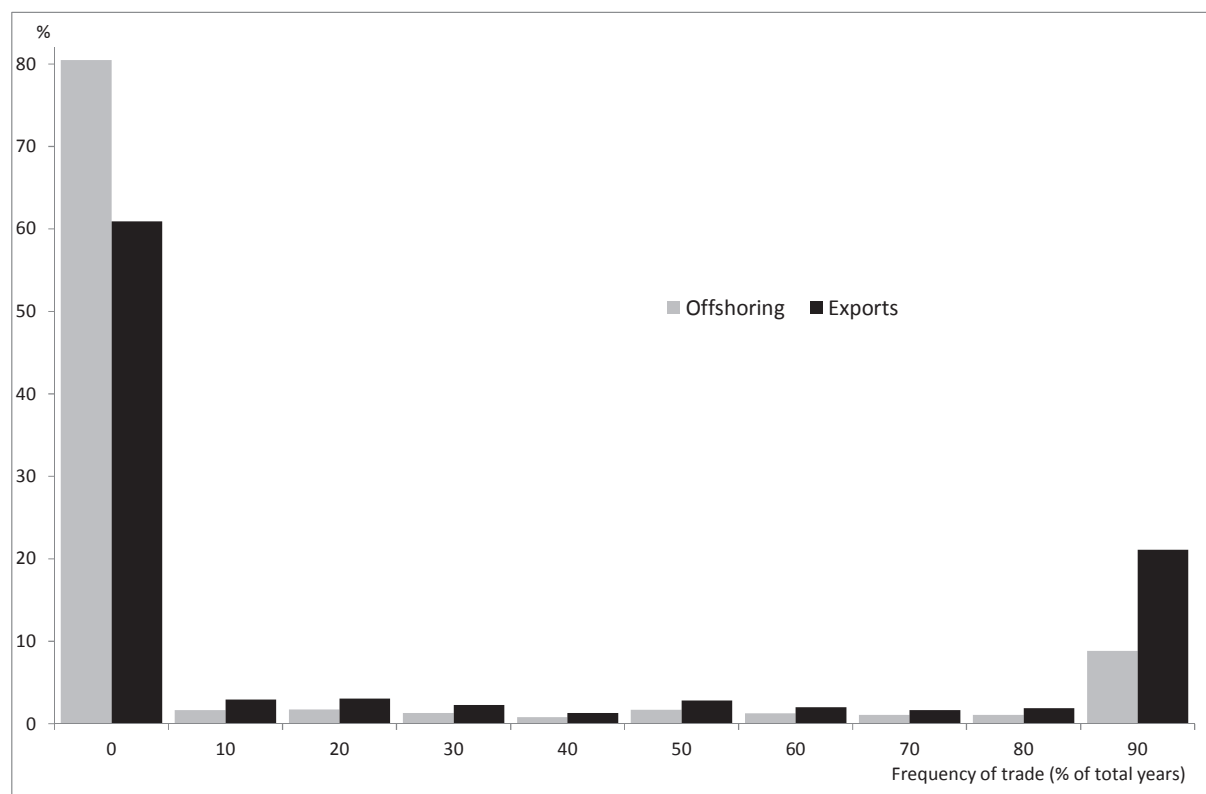
Notes: Statistics are calculated using the data set of all firm level agreements on the period 2005-2009. Percentages are calculated as the share of each topic in all agreements.

Table B: Firm-level average hourly wage regressions (total) – Different samples

Dependent variable: hourly average wage								
	<u>All observations</u>		<u>Excluding observations below</u>					
			Excl. 5 th percentile		Excl. 10 th percentile		Excl. 20 th percentile	
	(1)		(2)		(3)		(4)	
	OLS	OLS-IV	OLS	OLS-IV	OLS	OLS-IV	OLS	OLS-IV
Exports	0.005*** (0.001)	0.008*** (0.001)	0.007*** (0.001)	0.010*** (0.001)	0.008*** (0.001)	0.012*** (0.001)	0.011*** (0.001)	0.018*** (0.002)
Offshoring	0.002*** (0.000)	0.004*** (0.001)	0.003*** (0.001)	0.004*** (0.001)	0.002*** (0.001)	0.004*** (0.001)	0.003*** (0.001)	0.004*** (0.001)
Controls	Yes	Yes	Yes	Yes	Yes	Yes	Yes	Yes
Observations	25,742	25,742	23,269	23,269	21,055	21,055	17,289	17,289
Number of firms	8,824	8,824	8,123	8,123	7,364	7,364	6,054	6,054
R-squared	0.631	0.632	0.632	0.632	0.633	0.633	0.644	0.644

Notes: *** p<0.01, ** p<0.05, * p<0.1; Period: 2005-2009. Robust standard errors are clustered at the firm level and reported in brackets. Year and disaggregate industry-level dummies, random firm-level effects and firm-level control variables (TFP,...) are included in all specifications. “Net hourly wage” is the log of the average hourly wage in the firm. “Exports” is the log of the value of exports. “Offshoring” is the log of the value of imports of goods belonging to the same industry as that of the importing firm (see Section 3 for details). The four samples considered are constructed according to a different sample selection criterion. For every firm*year we compute the ratio of exports to total sales (“export intensity”) and the ratio of offshoring to total sales (“offshoring intensity”). We then build four different samples: (1) we keep all observations (firm*year) with positive exports and imports; (2) we exclude observations below the 5th percentiles of both distributions of ratios; (3) we exclude observations below the 10th percentiles and (4) we exclude observations below the 20th percentiles.

Figure A: Frequency of trade activities (1996-2009, in % of total years)



Notes: Each observation is a firm. The sample consists of all firms observed over the period 1996-2009 and for which we have balance-sheet information (BRN data set). We compute the “frequency of exports” as the number of years a given firm reports positive exports divided by the total number of years this firm is observed in our data set. Similar calculations are made for offshoring. “Offshoring” is defined as imports of goods belonging to the same industry as that of the importing firm (see Section 3 for details). The figure reports the distribution of those frequencies in our data. For instance, a little more than 60% of firms never export over our sample period.

Table C: Variance decomposition of exports, offshoring and wages

Variance of log...	1996-2009		2005-2009		2002-2009	2005-2009
	Exports	Offshoring	Exports	Offshoring	Average hourly wage	Average hourly wage
Total	5.41	6.27	4.64	5.38	0.05	0.04
Between	4.80	4.84	4.49	4.98	0.04	0.04
Within	0.61	1.44	0.15	0.40	0.01	0.00
Nr obs.	67,576	67,576	23,274	23,274	44,206	23,274

Notes: The sample consists of the 8,123 firms in our estimating sample. For some variables, we are able to have information for a longer period 1996-2009 for trade and 2002-2009 for the average hourly wage at the firm level. “hourly wage” is the log of the average hourly wage in the firm. “Exports” is the log of the value of exports. “Offshoring” is the log of the value of imports of goods belonging to the same industry as that of the importing firm (see Section 3 for details). We compute a decomposition of the variance of trade and wages for the period 2005-2009 (our estimating period) and for the longer period. We report the total variance of the variables, the variance due to differences between firms (“between”) and the variance due to differences over time within the same firm (“within”).

Table D: Stability over time of the set of products and countries (1996-2009)

	Exports		Offshoring	
	Mean	Median	Mean	Median
<i>Share of trade....</i>				
Top 1 product	0.69	0.71	0.81	0.90
Top 2 products	0.83	0.89	0.90	0.98
Top 1 country	0.52	0.46	0.76	0.81
Top 2 countries	0.67	0.66	0.88	0.93
Top 1 product*country pair	0.36	0.43	0.68	0.68
Top 2 product*country pairs	0.57	0.55	0.80	0.86
<i>Number of product changes</i>				
Top 1 product	1.7	1	1.4	1
Top 2 products	4.1	4	2.1	2
Top 1 country	2.4	2	1.8	2
Top 2 countries	4.1	4	2.9	3
Top 1 product*country pair	3.8	3	2.7	2
Top 2 product*country pairs	6.9	6	4.7	4

Notes: The sample consists of the 8,123 firms of our estimating sample. Using customs data set on the period 1996-2009, we select for each firm in a given year the main or the two main traded products. For that, we use the ratio of exports (resp. offshoring) of a product on total exports (resp. offshoring) of the firm in a given year at a very disaggregate level (HS6) over the period 1996-2009. We calculate the average share of those products among total exports (offshoring) of a given firm and how many times the major product (or top 2 products) is modified in a firm (on average over the period). We run the same analysis for countries of destination and origin and for the pairs product*country. “Offshoring” is defined as imports of goods belonging to the same industry as that of the importing firm (see Section 3 for details).

Table E: Frequency of the set of products and countries of origin/destination (1996-2004)

	1 st quartile	Median	3 rd quartile
<i>Exports</i>			
Nr of firms with the same main product*country pair	3.8	10.8	25.7
Nr of firms with the same Top 2 product*country pairs	1.0	1.8	3.9
<i>Offshoring</i>			
Nr of firms with the same main product*country pair	5.65	13.0	32.9
Nr of firms with the same Top 2 product*country pairs	1.0	2.7	5.9

Notes: The sample consists of the 8,123 firms in our estimating sample. Using customs data set on the period 1996-2009, we select for every firm the main pair of country*product (using the ratio of exports/offshoring to country c of product p on total exports/ offshoring) and we compute the number of firms exporting or importing the same main product*country pair as main (or top 2 main) product*country pair. For each year on the period 1996-2004, we calculate the 3 quartiles of the distribution and the table reports the mean of those statistics over the sample period. “Offshoring” is defined as imports of goods belonging to the same industry as that of the importing firm (see Section 3 for details).

Table F: First-stage IV regressions - excluding China, Germany and the United States

	Excluding China, Germany and the US	
	Exports	Offshoring
World demand (exports)	0.142*** (0.037)	0.094* (0.055)
World supply (imports)	0.045 (0.028)	0.250*** (0.056)
Controls	Yes	Yes
Observations	21,696	21,696
Number of firms	7,574	7,574
Overall R-squared	0.232	0.232

Notes: *** $p < 0.01$, ** $p < 0.05$, * $p < 0.1$. Period: 2005-2009. Robust standard errors are clustered at the firm level and reported in brackets. Firm-level control variables, year dummies and firm fixed-effects are included in all specifications. “Exports” is the log of the value of exports. “Offshoring” is the log of the value of imports of goods belonging to the same industry as that of the importing firm (see Section 3 for details). Product shares entering world demand and world supply are calculated at their overall sample (1996-2004) firm value. The sample consists of firms of our estimating sample but for each firm we exclude from their exports/imports trade flows to/from China, Germany and the US and recalculate exports and imports and the instrumental variables for firms in our estimating sample.

Table G: First-stage IV regressions – Exchange rates

	Non-euro countries		All countries	
	Exports	Offshoring	Exports	Offshoring
World demand (exports)	0.113*** (0.035)	0.095* (0.056)	0.099*** (0.032)	0.084* (0.046)
World supply (imports)	0.059** (0.027)	0.068 (0.052)	0.111*** (0.029)	0.196*** (0.053)
Exchange rate (exports)	0.890*** (0.165)	0.162 (0.256)	0.474* (0.246)	-0.666** (0.331)
Exchange rate (imports)	-0.299** (0.126)	0.669*** (0.209)	-0.130 (0.164)	0.498* (0.300)
Controls	Yes	Yes	Yes	Yes
Observations	16,254	16,254	23,234	23,234
Number of firms	5,960	5,960	8,100	8,100
Overall R-squared	0.101	0.046	0.115	0.056

Notes: *** $p < 0.01$, ** $p < 0.05$, * $p < 0.1$. Period: 2005-2009. Robust standard errors are clustered at the firm level and reported in brackets. Firm-level control variables, year dummies and firm fixed-effects are included in all specifications. “Exports” is the log of the value of exports. “Offshoring” is the log of the value of imports of goods belonging to the same industry as that of the importing firm (see Section 3 for details). Product shares entering world demand and world supply, Exchange rate (exports) and Exchange rate (imports) are calculated at their overall sample (1996-2004) firm value. The sample “all countries” consists of our estimating sample (columns 1 and 2) and we build the sample “Non-euro countries” by recalculating for all firms values of exports and imports and of instruments excluding trade with euro area countries (firms trading only with euro area countries are excluded).

Table H: First-stage IV regressions – Market shares

		Excluding observations for which the export/import market share is larger than...					
		10%		15%		20%	
		Exports	Offshoring	Exports	Offshoring	Exports	Offshoring
World (exports)	demand	0.109* (0.057)	0.092 (0.067)	0.104** (0.048)	0.053 (0.050)	0.079* (0.044)	0.027 (0.049)
World (imports)	supply	0.093** (0.044)	0.135* (0.077)	0.101** (0.043)	0.132** (0.064)	0.161*** (0.041)	0.181*** (0.065)
Controls		Yes	Yes	Yes	Yes	Yes	Yes
Observations		17,299	17,299	19,777	19,777	21,055	21,055
Number of firms		6,237	6,237	7,004	7,004	7,389	7,389
Overall R-squared		0.459	0.459	0.495	0.495	0.500	0.500

Notes: *** $p < 0.01$, ** $p < 0.05$, * $p < 0.1$. Period: 2005-2009. Robust standard errors are clustered at the firm level and reported in brackets. Firm-level control variables, year dummies and firm fixed-effects are included in all specifications. “Exports” is the log of the value of exports. “Offshoring” is the log of the value of imports of goods belonging to the same industry as that of the importing firm (see Section 3 for details). Product shares entering world demand and world supply, are calculated at their overall sample (1996-2004) firm value. The sample consists of firms of our estimating sample but we drop product-country observations for which the French export/import market share is less than a given percentage. To calculate the average market share of France in each country-product pair, we use the BACI data and define the market share as the percentage of imports by country c of product p that have France as origin (same calculation for exports). Then, for each firm we drop observations product-country-year for which the export/import market share is larger than a given percentage and, recalculate exports and imports and the instrumental variables.

Table I: Firm-level average hourly wage regressions (total, 2005-2008)

Dependent variable	Net hourly wage			
	(1)	(2)	(3)	(4)
Exports	0.014*** (0.001)	0.021*** (0.001)	0.007*** (0.001)	0.010*** (0.001)
Offshoring	0.006*** (0.001)	0.012*** (0.001)	0.003*** (0.001)	0.003** (0.001)
TFP			0.021*** (0.003)	0.020*** (0.003)
Firm size			-0.004 (0.003)	-0.010*** (0.003)
Capital/labour			0.014*** (0.004)	0.015*** (0.004)
Share of high-skilled workers			0.425*** (0.014)	0.423*** (0.014)
Unemployment rate			0.001 (0.001)	0.001 (0.001)
Temporary contracts			-0.040*** (0.011)	-0.040*** (0.011)
Domestic sales			0.004* (0.002)	0.003 (0.002)
Intercept	2.510*** (0.028)	2.344*** (0.027)	1.815*** (0.025)	1.794*** (0.025)
Controls	No	No	Yes	Yes
IV	No	Yes	No	Yes
Observations	19,045	19,045	19,045	19,045
Number of firms	7,479	7,479	7,479	7,479
R-squared	0.350	0.363	0.641	0.641

Notes: *** p<0.01, ** p<0.05, * p<0.1; Period: 2005-2008. Robust standard errors are clustered at the firm level and reported in brackets. Year and disaggregate industry-level dummies, random firm-level effects are included in all specifications. “Net hourly wage” is the log of the average hourly wage in the firm. “Exports” is the log of the value of exports. “Offshoring” is the log of the value of imports of goods belonging to the same industry as that of the importing firm (see Section 3 for details). Firm-level controls (size, TFP, capital/labour and domestic sales) are in logs.

Table J: Firm-level average hourly wage regressions (all workers) (2005-2009) – total imports

Dependent variable	Net hourly wage			
	(1)	(2)	(3)	(4)
Exports	0.012*** (0.001)	0.020*** (0.001)	0.006*** (0.001)	0.010*** (0.001)
Imports	0.010*** (0.001)	0.014*** (0.001)	0.004*** (0.001)	0.003** (0.001)
TFP			0.024*** (0.003)	0.023*** (0.003)
Firm size			-0.003 (0.003)	-0.008*** (0.003)
Capital/labour			0.013*** (0.003)	0.013*** (0.003)
Share of high-skilled workers			0.381*** (0.011)	0.379*** (0.011)
Unemployment rate			-0.000 (0.001)	-0.000 (0.001)
Temporary contracts			-0.035*** (0.010)	-0.035*** (0.010)
Domestic sales			0.003 (0.002)	0.003 (0.002)
Intercept	2.471*** (0.024)	2.320*** (0.024)	1.851*** (0.024)	1.831*** (0.024)
Controls	No	No	Yes	Yes
IV	No	Yes	No	Yes
Observations	23,269	23,269	23,269	23,269
Number of firms	8,123	8,123	8,123	8,123
R-squared	0.353	0.362	0.632	0.632

Notes: *** p<0.01, ** p<0.05, * p<0.1; Period: 2005-2009. Robust standard errors are clustered at the firm level and reported in brackets. Year dummies and firm random effects are included in all specifications. “Net hourly wage” is the log of the average hourly wage in the firm. “Exports” is the log of the value of exports. “Imports” is the log of the value of imports. Firm-level controls (size, TFP, capital/labour and domestic sales) are in logs.

Table K: Firm-level wage regressions (by occupation, 2005-2008)

Dependent variable	Ln (net hourly wage)							
	Blue collar		White-collar		Technicians		Executives	
	OLS	OLS-IV	OLS	OLS-IV	OLS	OLS-IV	OLS	OLS-IV
Exports	0.003*** (0.001)	0.004*** (0.001)	0.005*** (0.001)	0.007*** (0.001)	0.001 (0.001)	0.001 (0.001)	0.005*** (0.002)	0.004* (0.002)
Offshoring	0.000 (0.001)	-0.001 (0.001)	0.000 (0.001)	0.000 (0.001)	0.003*** (0.001)	0.004*** (0.001)	0.004*** (0.001)	0.008*** (0.001)
TFP	0.015*** (0.003)	0.015*** (0.003)	0.006 (0.005)	0.005 (0.005)	0.024*** (0.005)	0.024*** (0.005)	0.031*** (0.006)	0.030*** (0.006)
Firm size	0.023*** (0.003)	0.022*** (0.003)	0.021*** (0.003)	0.019*** (0.003)	-0.008** (0.003)	-0.008** (0.004)	0.010** (0.005)	0.009* (0.005)
Capital /labour	0.011*** (0.004)	0.011*** (0.004)	0.016*** (0.005)	0.016*** (0.005)	0.015*** (0.005)	0.015*** (0.005)	-0.003 (0.007)	-0.003 (0.007)
Share of high-skilled workers	0.068*** (0.010)	0.068*** (0.010)	0.009 (0.012)	0.008 (0.012)	-0.093*** (0.013)	-0.094*** (0.013)	-0.040** (0.016)	-0.043*** (0.016)
Unemp. rate	0.000 (0.001)	0.000 (0.001)	0.000 (0.001)	0.000 (0.001)	-0.001 (0.001)	-0.001 (0.001)	0.001 (0.001)	0.001 (0.001)
Temporary contracts	-0.047*** (0.011)	-0.047*** (0.011)	-0.084*** (0.014)	-0.085*** (0.014)	-0.077*** (0.015)	-0.077*** (0.015)	-0.049** (0.021)	-0.050** (0.021)
Domestic sales	0.003 (0.002)	0.003 (0.002)	0.003 (0.004)	0.003 (0.004)	0.005 (0.003)	0.004 (0.003)	0.010** (0.004)	0.009** (0.004)
Intercept	1.948*** (0.025)	1.946*** (0.025)	2.116*** (0.027)	2.106*** (0.027)	2.397*** (0.035)	2.393*** (0.035)	2.708*** (0.039)	2.703*** (0.040)
IV	No	Yes	No	Yes	No	Yes	No	Yes
Observations	19,045	19,045	19,045	19,045	19,045	19,045	19,045	19,045
Number of firms	7,479	7,479	7,479	7,479	7,479	7,479	7,479	7,479
R-squared	0.414	0.414	0.246	0.247	0.186	0.186	0.189	0.189

Notes: *** p<0.01, ** p<0.05, * p<0.1; Period: 2005-2008. Robust standard errors are clustered at the firm level and reported in brackets. Year and disaggregate industry-level dummies, random firm-level effects are included in all specifications. “Net hourly wage” is the log of the average hourly wage by job occupation in the firm. “Exports” is the log of the value of exports. “Offshoring” is the log of the value of imports of goods belonging to the same industry as that of the importing firm (see Section 3 for details). Firm-level controls (size, TFP, capital/labour and domestic sales) are in logs.

Table L: Firm-level wage regressions (by occupation) (2005-2009) – total imports

Dependent variable	Net hourly wage							
	Blue collar		White-collar		Technicians		Executives	
	OLS	OLS-IV	OLS	OLS-IV	OLS	OLS-IV	OLS	OLS-IV
Exports	0.004*** (0.001)	0.005*** (0.001)	0.004*** (0.001)	0.006*** (0.001)	0.002* (0.001)	0.003* (0.001)	0.003* (0.002)	0.002 (0.002)
Imports	-0.001 (0.001)	-0.003** (0.001)	0.002 (0.001)	0.001 (0.001)	0.004*** (0.001)	0.003** (0.002)	0.008*** (0.002)	0.012*** (0.002)
TFP	0.021*** (0.004)	0.022*** (0.004)	0.011** (0.004)	0.011** (0.004)	0.029*** (0.004)	0.029*** (0.004)	0.031*** (0.005)	0.030*** (0.005)
Firm size	0.020*** (0.003)	0.020*** (0.003)	0.020*** (0.003)	0.018*** (0.003)	-0.008** (0.003)	-0.008** (0.003)	0.012*** (0.004)	0.011** (0.004)
Capital/labour	0.009** (0.004)	0.009** (0.004)	0.016*** (0.005)	0.016*** (0.005)	0.012** (0.005)	0.012** (0.005)	-0.002 (0.007)	-0.002 (0.007)
Share of high-skilled workers	0.029*** (0.009)	0.029*** (0.009)	-0.007 (0.010)	-0.008 (0.010)	-0.118*** (0.012)	-0.118*** (0.012)	-0.051*** (0.014)	-0.052*** (0.014)
Unemp. rate	-0.002*** (0.001)	-0.002*** (0.001)	-0.000 (0.001)	-0.000 (0.001)	-0.001 (0.001)	-0.001 (0.001)	0.001 (0.001)	0.001 (0.001)
Temporary contracts	-0.049*** (0.011)	-0.048*** (0.011)	-0.072*** (0.014)	-0.072*** (0.014)	-0.077*** (0.015)	-0.077*** (0.015)	-0.037* (0.020)	-0.038* (0.020)
Domestic sales	0.004* (0.002)	0.005** (0.002)	0.001 (0.004)	0.001 (0.004)	0.003 (0.003)	0.003 (0.003)	0.008* (0.004)	0.007* (0.004)
Intercept	1.991*** (0.024)	1.999*** (0.024)	2.139*** (0.026)	2.131*** (0.026)	2.355*** (0.032)	2.356*** (0.033)	2.663*** (0.039)	2.650*** (0.040)
IV	No	Yes	No	Yes	No	Yes	No	Yes
Observations	23,269	23,269	23,269	23,269	23,269	23,269	23,269	23,269
Nr of firms	8,123	8,123	8,123	8,123	8,123	8,123	8,123	8,123
R-squared	0.416	0.416	0.258	0.258	0.185	0.185	0.187	0.188

Notes: *** p<0.01, ** p<0.05, * p<0.1; Period: 2005-2009. Robust standard errors are clustered at the firm level and reported in brackets. Year and disaggregate industry-level dummies, random firm-level effects are included in all specifications. “Net hourly wage” is the log of the average hourly wage by occupation in the firm. “Exports” is the log of the value of exports. “Imports” is the log of the value of imports. Firm-level controls (size, TFP, capital/labour and domestic sales) are in logs.

Table M: Firm-level wage regressions by bargaining regime and by occupation (2005-2009) – total imports

Firm wage agreement	No	No	Yes
Industry wage agreement	No	Yes	-
<i>Total</i>			
Exports	0.010*** (0.002)	0.010*** (0.001)	0.016*** (0.003)
Imports	-0.001 (0.003)	0.004** (0.001)	-0.002 (0.003)
R-Squared	0.625	0.604	0.735
<i>Blue-collar workers</i>			
Exports	0.005** (0.002)	0.004*** (0.001)	0.011*** (0.003)
Imports	-0.005** (0.003)	-0.004** (0.001)	-0.002 (0.004)
R-Squared	0.424	0.346	0.538
<i>White-collar workers</i>			
Exports	0.007*** (0.003)	0.006*** (0.001)	0.005 (0.004)
Imports	-0.006** (0.003)	0.002 (0.002)	0.006* (0.004)
R-Squared	0.276	0.202	0.365
<i>Technicians and supervisors</i>			
Exports	0.005 (0.003)	0.002 (0.002)	0.009*** (0.003)
Imports	0.001 (0.003)	0.002 (0.002)	-0.001 (0.004)
R-Squared	0.208	0.167	0.338
<i>Executives</i>			
Exports	0.004 (0.004)	-0.000 (0.002)	0.012*** (0.004)
Imports	0.003 (0.005)	0.015*** (0.002)	0.003 (0.004)
R-Squared	0.192	0.163	0.315
Observations	3,509	14,683	5,077
Number of firms	2,556	6,124	1,293

Notes: *** p<0.01, ** p<0.05, * p<0.1; Period: 2005-2009. Robust standard errors are clustered at the firm level and reported in brackets. Year and disaggregate industry-level dummies, random firm-level effects and firm-level controls are included in all specifications. “Net hourly wage” is the log of the average hourly wage by occupation in the firm. “Exports” is the log of the value of exports. “Imports” is the log of the value of imports. The category “Firm-level wage agreement” is defined according to the frequency of firm-level wage agreements for a given firm, “Yes” corresponds to firms that agree on wages more than 20% of years over the period 2002-2009, “No” less than 20% of wage agreements over the same period. The category “Industry-level wage agreement” means that a firm is covered by an industry-wage agreement in a given year.

Table N: Firm-level average hourly wage regressions: by bargaining regime and occupation

Dependent variable	Net hourly wage					
	Existence of an agreement		Agreement on wages		Agreement on topics other than wages	
	No	Yes	No	Yes	No	Yes
<i>Blue-collar workers</i>						
Exports	0.003*** (0.001)	0.010*** (0.003)	0.003*** (0.001)	0.011*** (0.003)	0.004*** (0.001)	0.009** (0.004)
Offshoring	-0.002** (0.001)	-0.001 (0.002)	-0.001 (0.001)	-0.001 (0.002)	-0.001* (0.001)	0.001 (0.003)
R-squared	0.587	0.731	0.598	0.736	0.597	0.743
<i>White-collar workers</i>						
Exports	0.006*** (0.001)	0.006* (0.003)	0.006*** (0.001)	0.006* (0.003)	0.007*** (0.001)	0.002 (0.004)
Offshoring	-0.001 (0.001)	0.002 (0.002)	-0.001 (0.001)	0.003 (0.002)	-0.000 (0.001)	0.002 (0.003)
R-squared	0.194	0.359	0.206	0.364	0.214	0.362
<i>Technicians and engineers</i>						
Exports	0.002 (0.001)	0.006** (0.003)	0.002 (0.001)	0.007** (0.003)	0.002 (0.001)	0.004 (0.004)
Offshoring	0.004*** (0.001)	0.003 (0.002)	0.004*** (0.001)	0.003 (0.002)	0.004*** (0.001)	0.006*** (0.002)
R-squared	0.157	0.336	0.162	0.340	0.166	0.396
<i>Executives</i>						
Exports	0.002 (0.002)	0.011*** (0.003)	0.002 (0.002)	0.011*** (0.004)	0.003 (0.002)	0.009** (0.004)
Offshoring	0.007*** (0.002)	0.006** (0.003)	0.008*** (0.001)	0.006** (0.003)	0.007*** (0.001)	0.007** (0.003)
R-squared	0.148	0.308	0.155	0.317	0.156	0.337
Observations	17,479	5,790	18,192	5,077	19,371	3,898
Number of firms	6,624	1,499	6,830	1,293	7,107	1,016

Notes: *** p<0.01, ** p<0.05, * p<0.1; Period: 2005-2009. Robust standard errors are clustered at the firm level and reported in brackets. Year and disaggregate industry-level dummies, random firm-level effects and firm-level control variables (TFP,...) are included in all specifications. “Net hourly wage” is the log of the average hourly wage by occupation in the firm. “Exports” is the log of the value of exports. “Offshoring” is the log of the value of imports of goods belonging to the same industry as that of the importing firm (see Section 3 for details). The existence of agreements variable is defined as a dummy variable equal to one if a firm frequently signs agreements on any topic (wages + other topics) (columns 1 and 2). Columns 3 and 4 compare firms that frequently agree on wages and firms that do not frequently agree on wages (our baseline result). Columns 5 and 6 compare firms that frequently agree on other topics than wages and firms that do not frequently agree on other topics.