



HAL
open science

Understanding star formation in molecular clouds. II. Signatures of gravitational collapse of IRDCs

N. Schneider, T. Csengeri, R. S. Klessen, Pascal Tremblin, V. Ossenkopf, N. Peretto, R. Simon, Sylvain Bontemps, C. Federrath

► **To cite this version:**

N. Schneider, T. Csengeri, R. S. Klessen, Pascal Tremblin, V. Ossenkopf, et al.. Understanding star formation in molecular clouds. II. Signatures of gravitational collapse of IRDCs. *Astronomy and Astrophysics - A&A*, 2015, 578, pp.id.A29. 10.1051/0004-6361/201424375 . hal-01092258

HAL Id: hal-01092258

<https://hal.science/hal-01092258v1>

Submitted on 1 Dec 2021

HAL is a multi-disciplinary open access archive for the deposit and dissemination of scientific research documents, whether they are published or not. The documents may come from teaching and research institutions in France or abroad, or from public or private research centers.

L'archive ouverte pluridisciplinaire **HAL**, est destinée au dépôt et à la diffusion de documents scientifiques de niveau recherche, publiés ou non, émanant des établissements d'enseignement et de recherche français ou étrangers, des laboratoires publics ou privés.



Distributed under a Creative Commons Attribution 4.0 International License

Understanding star formation in molecular clouds

II. Signatures of gravitational collapse of IRDCs[★]

N. Schneider^{1,2}, T. Csengeri³, R. S. Klessen^{4,5,6}, P. Tremblin^{7,8}, V. Ossenkopf⁹, N. Peretto¹⁰, R. Simon⁹,
S. Bontemps^{1,2}, and C. Federrath^{11,12}

¹ Université Bordeaux, LAB, UMR 5804, 33270 Floirac, France
e-mail: nschneid@cea.fr

² CNRS, LAB, UMR 5804, 33270 Floirac, France

³ Max-Planck Institut für Radioastronomie, Auf dem Hügel, 53121 Bonn, Germany

⁴ Zentrum für Astronomie der Universität Heidelberg, Inst. für Theor. Astrophysik, Albert-Ueberle Str. 2, 69120 Heidelberg, Germany

⁵ Department of Astronomy and Astrophysics, University of California, Santa Cruz, CA 95064, USA

⁶ Kavli Institute for Particle Astrophysics and Cosmology, Stanford University, SLAC National Accelerator Laboratory, Menlo Park, CA 94025, USA

⁷ Astrophysics Group, University of Exeter, EX4 4QL Exeter, UK

⁸ Maison de la Simulation, CEA-CNRS-INRIA-UPS-UVSQ, USR 3441, CEA Saclay, 91191 Gif-sur-Yvette, France

⁹ I. Physikalisches Institut, Universität zu Köln, Zùlpicher Straße 77, 50937 Köln, Germany

¹⁰ School of Physics and Astronomy, Cardiff University, Queens Buildings, Cardiff CF24 3AA, UK17

¹¹ Monash Centre for Astrophysics, School of Mathematical Sciences, Monash University, VIC 3800, Australia

¹² Research School of Astronomy&Astrophysics, The Australian National University, Canberra, ACT 2611, Australia

Received 11 June 2014 / Accepted 11 March 2015

ABSTRACT

We analyse column density and temperature maps derived from *Herschel* dust continuum observations of a sample of prominent, massive infrared dark clouds (IRDCs) i.e. G11.11-0.12, G18.82-0.28, G28.37+0.07, and G28.53-0.25. We disentangle the velocity structure of the clouds using ¹³CO 1→0 and ¹²CO 3→2 data, showing that these IRDCs are the densest regions in massive giant molecular clouds (GMCs) and not isolated features. The probability distribution function (PDF) of column densities for all clouds have a power-law distribution over all (high) column densities, regardless of the evolutionary stage of the cloud: G11.11-0.12, G18.82-0.28, and G28.37+0.07 contain (proto)-stars, while G28.53-0.25 shows no signs of star formation. This is in contrast to the purely log-normal PDFs reported for near and/or mid-IR extinction maps. We only find a log-normal distribution for lower column densities, if we perform PDFs of the column density maps of the *whole* GMC in which the IRDCs are embedded. By comparing the PDF slope and the radial column density profile of three of our clouds, we attribute the power law to the effect of large-scale gravitational collapse and to local free-fall collapse of pre- and protostellar cores for the highest column densities. A significant impact on the cloud properties from radiative feedback is unlikely because the clouds are mostly devoid of star formation. Independent from the PDF analysis, we find infall signatures in the spectral profiles of ¹²CO for G28.37+0.07 and G11.11-0.12, supporting the scenario of gravitational collapse. Our results are in line with earlier interpretations that see massive IRDCs as the densest regions within GMCs, which may be the progenitors of massive stars or clusters. At least some of the IRDCs are probably the same features as *ridges* (high column density regions with $N > 10^{23}$ cm⁻² over small areas), which were defined for nearby IR-bright GMCs. Because IRDCs are only confined to the densest (gravity dominated) cloud regions, the PDF constructed from this kind of a clipped image does not represent the (turbulence dominated) low column density regime of the cloud.

Key words. ISM: clouds – dust, extinction

1. Introduction

Infrared dark clouds (IRDCs) were detected as dark, cold (<25 K) absorption features with high column density ($N > 10^{22}$ – 10^{23} cm⁻²; e.g. Carey et al. 1998; Peretto & Fuller 2010) against the Galactic background at mid-IR wavelengths (Egan et al. 1998). Simon et al. (2006a), Teyssier et al. (2002), and Kainulainen et al. (2011a) showed that some IRDCs are embedded in giant molecular clouds (GMCs), and thus are not isolated

* The column density maps (FITS files) are only available at the CDS via anonymous ftp to cdsarc.u-strasbg.fr (130.79.128.5) or via <http://cdsarc.u-strasbg.fr/viz-bin/qcat?J/A+A/578/A29>

features as originally suggested by Egan et al. (1998). Peretto & Fuller (2010) demonstrated on the basis of a large sample (>10 000 clouds) that IRDCs span a large range of mass and size, with and without star formation activity. The most massive and largest IRDCs are proposed to represent the earliest stage of massive star formation (e.g. Rathborne et al. 2006; Nguyen-Luong et al. 2011; Beuther et al. 2013) because they are thought to have not yet started to form stars or are at the verge of star formation. On the other hand, an increasing number of studies (e.g. Carey et al. 2000; Rathborne et al. 2011; Sakai et al. 2013) now reveal that many of the massive IRDCs show signatures of active and ongoing (massive) star formation such as hot core and outflow emission and IR hot spots.

Table 1. Coordinates, distance D , and physical parameters of IRDCs, obtained from *Herschel* far-IR data, CO data, and near-IR/mid-IR extinction.

Region	l [°]	b [°]	D [kpc]	$\langle N_{\text{dust}} \rangle$ [10^{21} cm^{-2}]	$\langle N_{\text{bulk}} \rangle$ [10^{21} cm^{-2}]	$\langle N_{\text{cont}} \rangle$ [10^{21} cm^{-2}]	M_{dust} [$10^4 M_{\odot}$]	M_{ext} [$10^4 M_{\odot}$]	M_{IRDC} [$10^4 M_{\odot}$]	M_{GMC} [$10^5 M_{\odot}$]	Σ_{dust} [M_{\odot}/pc^2]
				(1)	(2)	(3)	(4)	(5)	(6)	(7)	(8)
<i>G11.11-0.12</i>	11.118	-0.118	3.6	22.5	4.6	3.0	8.4	–	2.2	0.5	418
<i>G18.82-0.28</i>	18.822	-0.285	4.8	24.1	9.9	7.1	3.4	1.9	2.3	1.3	448
<i>G28.37+0.07</i>	28.373	0.076	5.0	39.9	16.1	7.0	12.4	6.8	6.3	9.0	741
<i>G28.53-0.25</i>	28.531	-0.251	5.7	25.6	11.0	14.0	9.6	7.4	5.2	1.5	474

Notes. (1) Average H_2 -column density (N_{dust}) from *Herschel* far-IR data within the ellipse defining the IRDC (Simon et al. 2006b). (2) Average H_2 -column density from $^{13}\text{CO } 1\rightarrow 0$ column density (assuming that ^{13}CO is optically thin) with $N(\text{H}_2)[\text{cm}^{-2}] = 4.92 \times 10^5 N(^{13}\text{CO})$ in the same ellipse and assuming an excitation temperature of 15 K. The velocity range corresponds to the bulk emission of the IRDC. For G11.11-0.12, we used $^{12}\text{CO } 3\rightarrow 2$ data with $N(\text{H}_2)[\text{cm}^{-2}] = 2.3 \times N(^{12}\text{CO})$ (Strong et al. 1988) with the ^{12}CO column density $N(^{12}\text{CO})$. (3) Lower limit for the “contamination” column density from CO data, determined for all velocities lower and higher than that of the IRDC. (4) Mass $M = N_{\text{dust}} 2 m_{\text{H}} \mu A D^2 (\pi/180)^2 [M_{\odot}]$ with $m_{\text{H}} = 1.67 \times 10^{-24} \text{ g}$, $\mu = 2.3$ (mean atomic weight per molecule), within the area A [deg^2] of the ellipse defining the IRDC. (5) Mass of the cloud from near-IR/mid-IR extinction, given in KT and BTK. (6, 7) Lower limit of mass of the IRDC (6) and associated GMC (7) from CO bulk emission. (8) Surface density $\Sigma_{\text{dust}} = M_{\text{dust}}/A$. The mass M and area A refer to the values within the ellipse defining the IRDC.

How do these observations fit together? Are IRDCs a special category of molecular clouds/clumps that are dominated by turbulence during their earliest stages of evolution? Or are they only the densest condensations in massive star-forming clouds and then dominated by gravity as IR-bright clouds? To address these questions, it is crucial to start with studying the gas reservoir of IRDCs, i.e. the column density structure as the most convenient observable. In particular the probability distribution function (PDF) of column density serves as a key property in characterising various physical processes that shape the structure of molecular clouds (see e.g. Federrath & Klessen 2013, and references therein). Observational studies, based on near-IR extinction or *Herschel* dust column density maps, showed that the PDF of star-forming clouds has a log-normal distribution for low column densities and a power-law tail for higher column densities, where the power-law tail is either interpreted as due to external pressure (Kainulainen et al. 2011b), self-gravity (Froebrich & Rowles 2010; Schneider et al. 2013, 2015), or a combination of both (Tremblin et al. 2014). Numerical simulations (e.g. Padoan et al. 1997; Kritsuk et al. 2007; Federrath et al. 2008a) have shown that supersonic turbulence in isothermal gas (without self-gravity) can reproduce a log-normal distribution. When self-gravity is switched on in the models, a power-law tail develops on the end of the PDF with high column density (Klessen 2000; Vazquez-Semadeni et al. 2008; Kritsuk et al. 2011; Federrath & Klessen 2013; Girichidis et al. 2014). The only PDFs reported for IRDCs were either constructed from ALMA dust continuum (G0.253+0.016, Rathborne et al. 2014) or from extinction maps obtained from near- and mid-IR data (Kainulainen & Tan 2013; and Butler et al. 2014, called KT and BTK in the following). The latter are best fitted by log-normal distributions.

In this paper we investigate a sample of four well-known IRDCs from the catalogue of Simon et al. (2006b). The IRDC G11.11-0.12 (the “snake”) lies at a distance of 3.6 kpc and has a linear extent of ~ 30 pc. G18.82-0.28, G28.37+0.07, and G28.53-0.25 are smaller (size of a few pc) and further away (Table 1), and were studied by KT and BTK, who named them Cloud A, C, and D, respectively. The objective of this paper is to show that these IRDCs, which are amongst the most massive in the Galaxy, are dominated by gravity and show the same properties (e.g. average column density, PDF shape, spectral line profiles) as the central cloud regions, called ridges (Schneider et al. 2010; Hill et al. 2011; Hennemann et al. 2012), in IR-bright GMCs.

2. Observations and data analysis

Column density maps from *Herschel*

We use *Herschel*¹ (Pilbratt et al. 2010) archive data from the *Herschel* Infrared GALactic plane survey (Hi-GAL), Molinari et al. 2010) program. The PACS (Poglitsch et al. 2010) data were reduced using scanamorphos v23 (Roussel 2013). The SPIRE (Griffin et al. 2010) data were reduced employing the HIPE10 pipeline and not the ROMAGAL software (Traficante et al. 2011) that was developed for the Hi-Gal project. We preferred to use the *Herschel* interactive processing environment (HIPE; Ott et al. 2011) because it is the officially developed and well-documented data reduction software for the *Herschel* satellite. The column density and temperature maps are determined from a pixel-to-pixel grey-body fit to the 160 μm (PACS), and 250, 350, 500 μm (SPIRE) wavelengths. These maps have an angular resolution of $\sim 36''$, corresponding to the nominal Gaussian full width at half maximum (FWHM) value of 36.4'' for the 500 μm map given in the SPIRE Handbook (v2.5, 2014). To perform the spectral energy distribution (SED) fit, all lower wavelengths maps with high angular resolution were smoothed to 36''. All *Herschel* maps have an absolute flux calibration, using *Planck*-corrections from the ZEROPointCORRECTION task in HIPE10 for SPIRE and IRAS maps for PACS. For the SED fit, we fix the specific dust opacity per unit mass (dust+gas) approximated by the power law $\kappa_{\nu} = 0.1 (\nu/1000 \text{ GHz})^{\beta} \text{ cm}^2/\text{g}$ and $\beta = 2$, and leave the dust temperature and column density as free parameters (see Schneider et al. 2015, for further details). We estimate the final uncertainties in the column density maps to be around $\sim 30\text{--}50\%$, mainly arising from the uncertainty in the assumed form of the opacity law and possible temperature gradients along the line-of-sight (Russeil et al. 2013; Roy et al. 2013).

Molecular line data: $^{13}\text{CO } 1\rightarrow 0$ and $^{12}\text{CO } 3\rightarrow 2$

Data cubes of $^{13}\text{CO } 1\rightarrow 0$ (110.2 GHz) emission were taken from the Galactic Ring Survey archive (GRS), a survey covering the first Galactic quadrant (Jackson et al. 2006), obtained with the Five Colleges Radio Astronomy Observatory (FCRAO). The angular resolution is $\sim 45''$ at a velocity resolution of 0.21 km s^{-1} .

¹ *Herschel* is an ESA space observatory with science instruments provided by European-led Principal Investigator Consortia and with important participation from NASA.

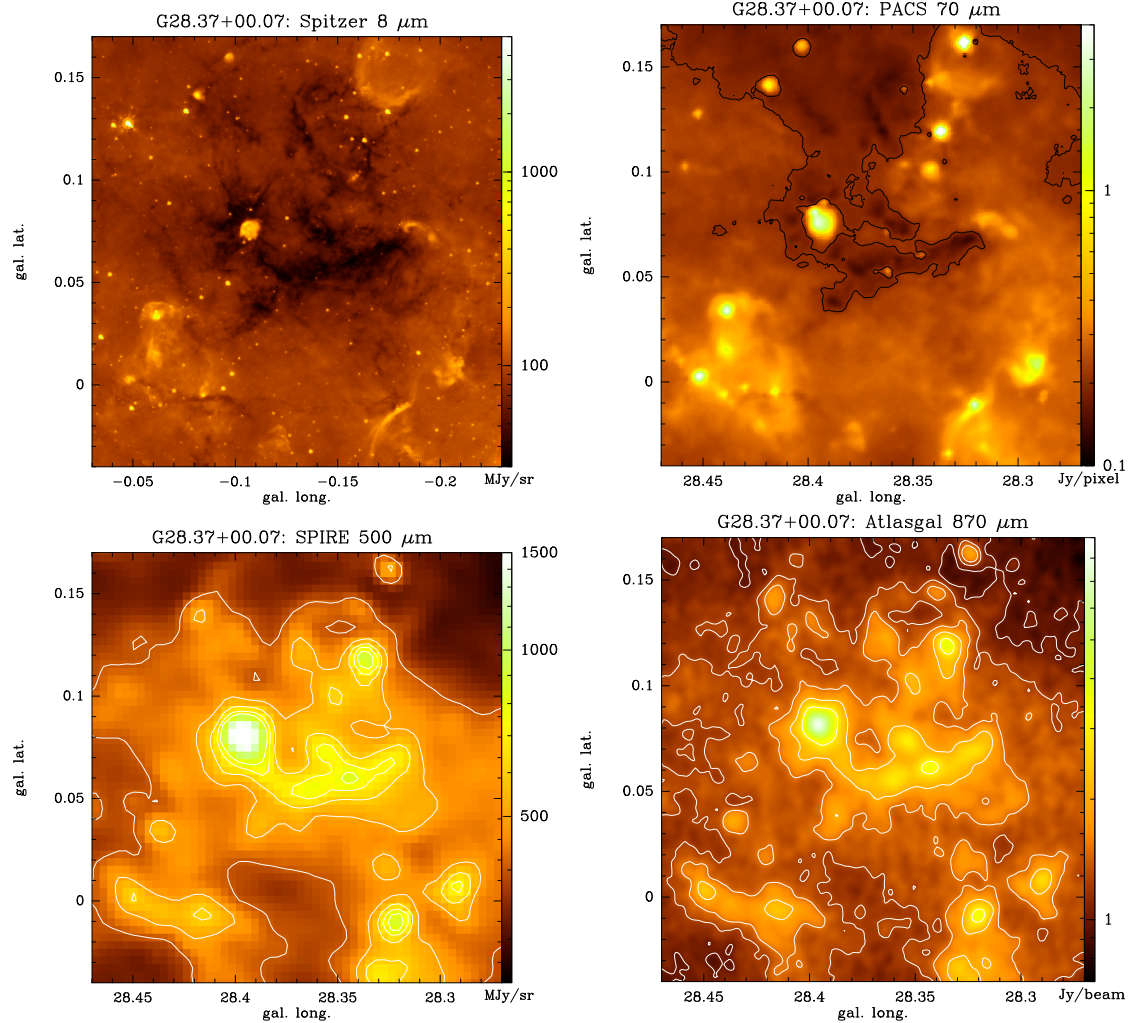


Fig. 1. *Top:* *Spitzer* 8 μm ($\sim 2.5''$ resolution) and PACS 70 μm maps ($\sim 11''$ resolution). The *Spitzer*/IRAC data were taken from the public available GLIMPSE archive. *Bottom:* SPIRE 500 μm map (36'' resolution) and ATLASGAL 870 μm maps (23'' resolution) of G28.37+0.07. The central dark feature in the *Spitzer* and PACS images is the IRDC, appearing bright at longer wavelengths (SPIRE and ATLASGAL).

We obtained ^{12}CO 3 \rightarrow 2 (345.8 GHz) data (angular resolution of 14'' and velocity resolution of 1 km s $^{-1}$) from the JCMT/COHRS archive (Dempsey et al. 2013). Both CO data sets are given on a main beam brightness temperature scale.

ATLASGAL

The ATLASGAL survey (Schuller et al. 2009) imaged 420 deg 2 of the Galactic plane ($l = \pm 60^\circ$, $b = \pm 1.5^\circ$) at a 19.2'' spatial resolution at 870 μm with the LABOCA camera (Siringo et al. 2009) on the APEX Telescope. The data, together with the catalogue of compact sources, is presented in Csengeri et al. (2014). Here, we make use of the publicly available ATLASGAL data². The sensitivity of the data is dominated by the noise level of the ATLASGAL survey, which in these regions is ~ 60 mJy/beam. Ground-based bolometer observations intrinsically filter emission from larger scales when removing the correlated noise during data reduction. In the original LABOCA observations the low-level emission is therefore filtered out above $\sim 2.5'$ angular scales, and only the densest regions are visible. The more extended emission has been recovered using the high sensitivity all-sky survey of the *Planck*/HFI instrument at 353 GHz,

following the method of Weiss et al. (2001), and presented in more detail in Csengeri et al. (in prep.). As shown in the figures presenting the ATLASGAL data, the combined data set is sensitive to the cold dust at all spatial scales. For display reasons, we smoothed the data slightly to 23'' angular resolution. We only display the maps to show the large scale distribution of dense and cold gas. We do not use the ATLASGAL data to determine the column density. This will be done in a future work in which we produce column density maps at higher angular resolution using ATLASGAL and selected *Herschel* bands.

3. Results and discussion

In this section we show as a representative case all continuum and molecular line data for G28.37+0.07 (Cloud C), which was studied in Simon et al. (2006b), KT, and BTK. Maps for the other three clouds are shown in Appendix A.

3.1. G28.37+0.07 with *Herschel* and ATLASGAL

Figure 1 displays G28.37+0.07 as an extended dark feature in the 8 μm *Spitzer*/IRAC³ and 70 μm PACS maps except with an

³ Data taken from the public available GLIMPSE archive <http://irsa.ipac.caltech.edu/data/SPITZER/GLIMPSE/>

² <http://atlasgal.mpifr-bonn.mpg.de/>

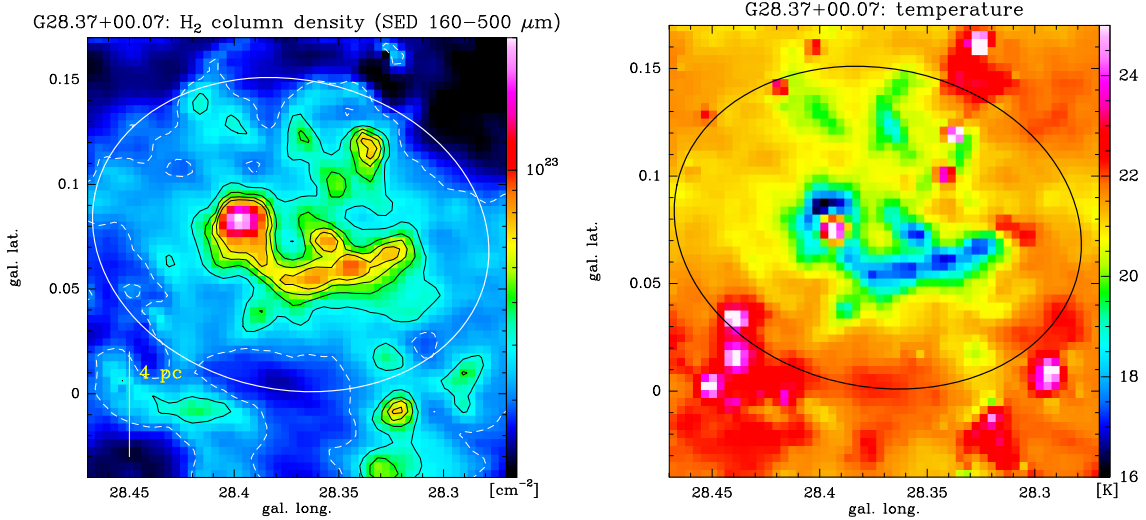


Fig. 2. *Left:* H_2 -column density map from an SED fit to *Herschel* fluxes at 160–500 μm . The black contours indicate the levels $N_{\text{dust}} = 4$ to $7 \times 10^{22} \text{ cm}^{-2}$ in steps of 10^{22} cm^{-2} , the white-dashed contour outlines the approximate completeness level ($\sim 3 \times 10^{22} \text{ cm}^{-2}$), and the white ellipse is taken from Simon et al. (2006b), defining the IRDC. *Right:* temperature map of G28.37+0.07.

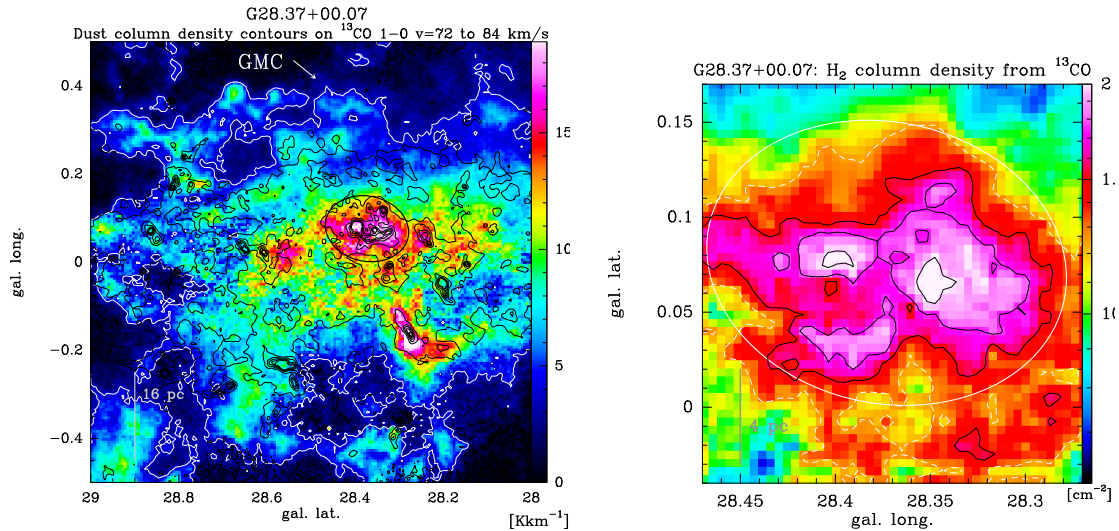


Fig. 3. *Left:* line integrated ^{13}CO 1 \rightarrow 0 emission in colour scale between $v = 72$ and 84 km s^{-1} , the velocity range of the bulk emission of the IRDC, and the associated GMC. The white contour indicates the 3.5 K km s^{-1} level, corresponding to $A_v = 2$, which defines the extent of the GMC and was used for mass estimation. The *Herschel* column density is overlaid as black contours (levels 2 to $6 \times 10^{22} \text{ cm}^{-2}$ in steps of 10^{22} cm^{-2}) and the IRDC is outlined by an ellipse (Simon et al. 2006b). *Right:* H_2 -column density map of the centre region of the GMC, obtained from ^{13}CO 1 \rightarrow 0. The white-dashed contour indicates a column density of $1.25 \times 10^{22} \text{ cm}^{-2}$, the remaining black contours the levels 1.5, 1.75, and $2 \times 10^{22} \text{ cm}^{-2}$.

emission peak at $l = 28.396^\circ$, $b = 0.081^\circ$. The cloud is overall bright at 500 μm and 870 μm , but also at 8 μm (Carey et al. 2000, BTK). It corresponds to an IRAS source (IRAS 18402-403), and contains massive protostellar cores (Zhang et al. 2009), and is thus most likely a protocluster. Because this peak is also prominent at longer wavelengths, the protocluster is still embedded in a dense, cold, molecular envelope. In particular, the 500 and 870 μm maps, tracing the large-scale distribution of cold, molecular gas, show that the IRDC is not an isolated feature. This also becomes obvious in the column density and temperature maps (Fig. 2), where this central region is outlined by low temperatures of approximately 16 to 19 K, except for the locally heated protostellar environment, and column densities of $6 \times 10^{22} \text{ cm}^{-2}$ to a few 10^{23} cm^{-2} . Comparing our column density maps with those of KT and BTK shows that the highest column densities above a column density of few 10^{23} cm^{-2} (BTK give a threshold of $A_v \sim 200$) are missing in the BTK studies because (i) there is extinction saturation i.e. mid-IR foreground emission is as bright

as the emission towards the cloud; and (ii) it is a bright 8 μm region: the densest part of G28.37+0.07 is emitting strongly at 8 μm , so it does not appear as an extinction feature. Therefore recovering the column density structure from an extinction map at these positions is impossible (Peretto & Fuller 2010).

3.2. G28.37+0.07 in ^{13}CO 1–0 emission

3.2.1. The IRDC as part of a GMC

To identify the exact velocity range of G28.37+0.07, we followed the method outlined in Simon et al. (2006b) using the GRS ^{13}CO 1 \rightarrow 0 data to establish a morphological match between the *Herschel* column density map and ^{13}CO emission. Simon et al. (2006b) already listed this source with a velocity (v_{lsr}) of 78.6 km s^{-1} and a velocity dispersion of 8.3 km s^{-1} . Figure 3 (left) shows the large-scale velocity integrated (72 to 84 km s^{-1}) ^{13}CO map with the dust column density

overlaid as contours. We define the “border” of the GMC by the $A_v = 2$ level (see Sect. 3.2.2). The right panel of Fig. 3 shows a zoom into one of the cloud peak emission regions that include the IRDC. This map is given in H_2 -column density, determined from the ^{13}CO 1→0 map, and can be compared to the *Herschel* H_2 -map calculated from dust emission (Fig. 2).

The overall correspondence on the GMC scale between ^{13}CO and dust emission is good. The two most prominent peaks in ^{13}CO emission correlate well with contours of dust column density, indicating that most of the dust seen with *Herschel* indeed comes from gas of the molecular cloud at that velocity range i.e. the bulk emission of the cloud. All ^{13}CO emission outside this velocity range is due to diffuse emission and/or clouds along the line-of-sight. We estimate this contribution to sum up to a column density of $\sim 7 \times 10^{21} \text{ cm}^{-2}$ (Sect. 3.2.3). On the IRDC scale, a one-to-one correspondence between H_2 from ^{13}CO and dust is not expected because ^{13}CO can become optically thick and no longer traces the coldest and highest density regions. However, the maps agree well and the prominent peak, which is also seen at 500 and 870 μm emission and column density (Fig. 1), shows up as a peak in ^{13}CO (and H_2) in Fig. 3. This correlation, and the fact that this peak has the same velocity as seen in N_2H^+ 1→0 (Tackenberg et al. 2014), provides evidence that this high column density clump is clearly an intrinsic part of the IRDC.

A more quantitative comparison between the H_2 -maps from ^{13}CO and dust shows that both maps display a gradient of decreasing column density, down to $A_v \sim 15$ for the map obtained from ^{13}CO and $A_v \sim 30$ for the *Herschel* map. Considering a line-of-sight confusion for the *Herschel* map of around $A_v = 7$ (Sect. 3.2.3), and the large uncertainties for both methods in determining H_2 column density maps, the agreement is rather good. However, this finding is in contrast with the extinction map of BTK, which shows a much steeper gradient in extinction going down to values of $A_v = 3$. In our map (H_2 from ^{13}CO), this low value is only found at the borders of the whole GMC.

In summary, we have shown, using the ^{13}CO map, that G28.37+0.07 is a part of a much larger molecular cloud complex. It constitutes the cloud centre region with highest (column) densities. We obtain the same results for the other clouds in this study. Appendix A shows a ^{12}CO 3→2 map of G11.11-0.12 and ^{13}CO 1→0 maps of G18.82-00.28 and G28.53-00.25. Because of the spatial limit of the COHRS ^{12}CO survey, the GMC associated with G11.11-0.12 (Fig. A.2) is not fully covered towards lower galactic latitudes. However, G11.11-0.12 is clearly not an isolated feature but forms a dense region within this GMC that has a mass of at least $0.5 \times 10^5 M_\odot$ (Table 1). The IRDCs G18.82-00.28 and G28.53-00.25 (Figs. A.4 and A.6) are part of more massive clouds ($\sim 1.5 \times 10^5 M_\odot$) that were fully included in the GRS ^{13}CO survey. Our results are thus in line with earlier findings (e.g. Carey et al. 2000; Simon et al. 2006a; Teyssier et al. 2002), which see many IRDCs as an intrinsic part of a larger molecular cloud.

3.2.2. Mass determination and link to IR-bright GMCs

For the mass determination from ^{13}CO , we define the extent of the GMC above an A_v level of 2 mag. This threshold is commonly used (e.g. Lada et al. 2010; Heiderman et al. 2010). To be consistent with Simon et al. (2001, 2006a), we employ an $N(\text{H}_2)/N(^{13}\text{CO})$ conversion factor of 4.92×10^5 (see Simon et al. 2001 for further details). For the excitation temperature, we take a value of 15 K. This is a compromise between the average dust temperature of 21 K, determined from the map shown in Fig. 2, and the excitation temperature obtained from

the ^{12}CO 3→2 data⁴. From ^{12}CO , we derive $T_{\text{ex}} = 11$ (16, 22) K for an observed main beam temperature of $T_{\text{mb}} = 4$ (6, 8) K (see Fig. 8). The dust temperature is most likely overestimated by a few degrees (Peretto et al. 2013), and it is not clear how well the dust is mixed with the gas. Taking $T_{\text{ex}} = 15$ K seem to be reasonable choice and leads to a value of $\sim 3.5 \text{ K km s}^{-1}$ for the line integrated ^{13}CO emission for $A_v = 2$. The total mass of the GMC above this level (indicated by a white contour in Fig. 3) is then $9.0 \times 10^6 M_\odot$, and the equivalent radius $\sim 40 \text{ pc}$.

The IRDC G28.37+0.07 occupies only a small spatial fraction within the GMC. From the ^{13}CO measurements, we are consistent with Simon et al. (2006a) and find a peak H_2 column density of $16(21) \times 10^{21} \text{ cm}^{-2}$ for $T_{\text{ex}} = 15(20) \text{ K}$, and a mass of $6.3 \times 10^4 M_\odot$. From the dust continuum, we obtain higher values of average and peak column density i.e. $\langle N_{\text{dust}} \rangle \sim 4 \times 10^{22} \text{ cm}^{-2}$ and $N_{\text{peak}} \sim 3 \times 10^{23} \text{ cm}^{-2}$, respectively, and a high surface density ($\Sigma_{\text{dust}} \sim 740 M_\odot \text{ pc}^{-2}$). The surface density ($\Sigma_{\text{dust}} = M_{\text{dust}}/A$) refers to the area A within the ellipse defining the IRDC.

The values of column densities and surface densities for the other IRDCs of our sample are also high i.e. $\langle N_{\text{dust}} \rangle \sim 2.5 \times 10^{22} \text{ cm}^{-2}$ and $\Sigma_{\text{dust}} > 400 M_\odot \text{ pc}^{-2}$. These massive IRDCs may thus correspond to ridges that were defined as the central regions within a GMC with column densities above $\sim 10^{22-23} \text{ cm}^{-2}$ at temperatures below 20 K for the IR-bright cloud Vela C (Hill et al. 2011) and the DR21 ridge⁵ (Schneider et al. 2010; Hennemann et al. 2012).

3.2.3. Line-of-sight confusion towards G28.37+0.07

We estimate the ^{13}CO emission along the line-of-sight to assess how much of H_2 column density may arise from clouds and diffuse emission not related to our target cloud. The average H_2 -column density, using the same conversion factor $N(\text{H}_2)/N(^{13}\text{CO})$ of 4.92×10^5 as for the determination of the masses of the GMC, in the velocity ranges outside the bulk emission of the IRDC and within the ellipse is $\langle N_{\text{cont}} \rangle = 7 \times 10^{21} \text{ cm}^{-2}$. The H_2 column density $\langle N_{\text{dust}} \rangle$ determined from the *Herschel* map is $\sim 40 \times 10^{21} \text{ cm}^{-2}$ and that from ^{13}CO is $\langle N_{\text{bulk}} \rangle \sim 16 \times 10^{21} \text{ cm}^{-2}$. However, if ^{13}CO becomes optically thick and/or freezes out in the highest density regions, it underestimates the H_2 column density. On the other hand, the *Herschel* column density map is affected by line-of-sight contamination and thus overestimates the H_2 column density. Considering these effects and the uncertainties of the methods, a factor of 2 disagreement between the column density determined from CO and dust is acceptable.

4. Probability distribution functions of IRDCs

4.1. Do IRDCs have a log-normal or power-law PDF?

4.1.1. PDFs from dust continuum

The PDFs⁶ of dust column density for the IRDC G28.37+0.07 and its associated GMC are shown in Fig. 4, those for G11.11-0.12, G18.82-0.28, and G28.53-0.25 are listed in Appendix B.

⁴ $T_{\text{ex}} = 16.6 \times (\ln(16.6/T_{\text{mb}}(\text{CO}32) + 0.036))^{-1} [\text{K}]$.

⁵ Note that the DR21 ridge itself is an IRDC (Marston et al. 2004), and that the IRDC G035.39-0.33 in W48 was already qualified as a ridge (Nguyen-Luong et al. 2011) with the same physical properties.

⁶ We define $\eta \equiv \ln(N/\langle N \rangle)$ as the natural logarithm of the column density N , divided by the mean column density $\langle N \rangle$, and the quantity $p_\eta(\eta)$ then corresponds to the PDF of η with the normalisation $\int_{-\infty}^{+\infty} p_\eta d\eta = \int_0^{+\infty} p_N dN = 1$ (see Schneider et al. 2015, for details).

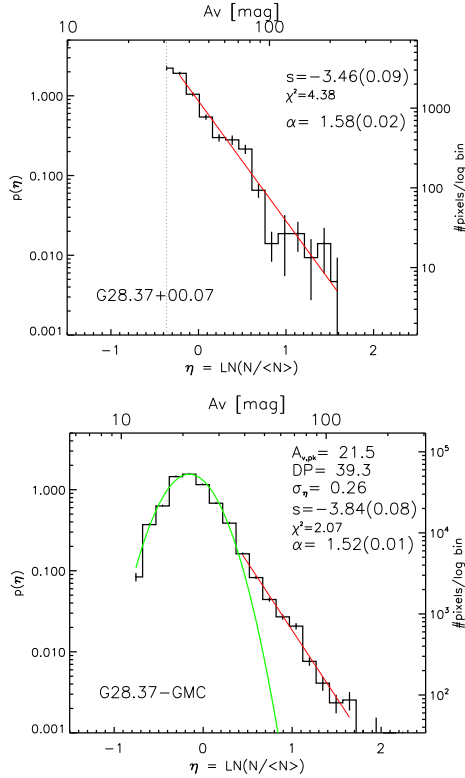


Fig. 4. PDFs of G28.37+0.07 and its associated GMC, derived from the *Herschel* column density map. The *upper panel* shows the PDF of the IRDC, only from the pixels inside the ellipse shown in Fig. 2. The *lower panel* shows the PDF obtained for the whole GMC (all pixels inside the contour indicated in Fig. 3, *right*). The error bars were calculated using Poisson statistics. The left *y*-axis gives the normalised probability $p(\eta)$ and the right *y*-axis indicates the number of pixels per log bin. The upper *x*-axis is the visual extinction and the lower *x*-axis is the logarithm of the normalised column density. The green curve shows a log-normal fit to the PDF from the GMC. The red line indicates a power-law fit to the high column density tail with the slope s together with its error and the reduced χ^2 goodness-of-fit. The exponent α of an equivalent spherical density distribution $\rho(r) \propto r^{-\alpha}$ is also indicated in the panel. The dashed line in the upper panel indicates the completeness level; the PDF left of this line is incomplete.

To be consistent with other studies, we express the PDF in visual extinction A_v using the conversion $N(\text{H}_2)/A_v = 0.94 \times 10^{21} \text{ cm}^{-2} \text{ mag}^{-1}$ (Bohlin et al. 1978).

All PDFs are sampled with a bin size of 0.15 (in η) using maps of a grid of $14''$. In Schneider et al. (2015), we investigated the effect of different bin sizes on the PDF and found that the PDF properties, and in particular the slope, do not change significantly using different bins. As shown in their Fig. A.1, the best compromise between high sampling and resolution lies for bin sizes of 0.1 to 0.2. We thus decided to adopt a bin size of 0.15. The PDFs are constructed from pixels above the approximate completeness limit within the ellipses defining the IRDC. This level was obtained from the column density maps (e.g., Fig. 2) where we determined the lowest contour level (indicated by a white dashed line) that is still continuous. That implies that above this contour, the majority of pixels is still found within the ellipse defining the IRDC, and below this contour, the map is incomplete. Accordingly, for lower column densities, the pixel distribution is also not complete and can create an artificial fall-off of the PDF, which should not be confused with a log-normal PDF. The PDF of the IRDC alone obtained in this way, as well as

the PDFs for the other IRDC clouds (see Fig. B.1), is consistent with a pure power-law distribution. In contrast, the PDF of the whole GMC (Fig. 4, bottom) in which the IRDC is embedded indeed shows a log-normal part plus a power-law tail, similar to what was found for star-forming clouds (e.g. Kainulainen et al. 2011b; Schneider et al. 2013).

To exclude a possible log-normal distribution for our observed PDF of the IRDC, we performed a two-sample Kolmogorow-Smirnov (KS)-test, comparing our distribution with a set of pure log-normal distributions with different widths ($\sigma = 0.2$ to 1.7) and normalisations (see Appendix C for details). The probabilities p in all cases of broad PDFs are very low so we exclude the possibility that our observed PDF is purely log-normal. We also made a KS-test using our PDF of the IRDC (Fig. 4, top), but including the data points left of the completeness level and ignoring the data points above $A_v \sim 100$. The two-sample KS-test with the synthetic PDFs also shows small values for p (see Table C.1). The p -value for a PDF with $\sigma = 1.7$ (fitted by BTK) is 2.2×10^{-6} (or 4.7×10^{-4} , depending on normalisation). The best-fitting log-normal has a width of $\sigma = 0.4$ (p -value = 0.25 (0.28)), which implies that the best-fit might be consistent at the 2-sigma level. However, the PDF is too narrow to be consistent with what was found in BTK.

We performed a linear regression fitting to the power-law part of the PDF. The starting point was chosen as the break point of the PDF between log-normal and power-law seen in the PDF of the GMC. For example, for G28.37+0.07 (Fig. 4), the break occurs at $A_v \sim 40$ and we thus started the fitting for the IRDC at this value. The reduced χ^2 values of the power-law fits scatter, but are all above one and thus indicate that the general assumption of a power-law dependence is justified.

In Appendix B, we show the PDFs of the other IRDCs (alone and including the embedding GMC). The result is the same as for G28.37+0.07 i.e. a log-normal plus power-law tail for the GMC and a power-law distribution for the IRDC. For G28.53-0.25, there is an indication for a log-normal distribution below $A_v \sim 30$. However, the PDFs of the GMC are less reliable because effects of line-of-sight contamination become more important and can lead to a change in slope for the power-law tail (Schneider et al. 2015).

4.1.2. Probability distribution functions from ^{13}CO

Figure 5 shows PDFs obtained from the ^{13}CO data. The red PDF is constructed from the map displayed in Fig. 3 and contains only emission from the GMC in the velocity range 72 to 84 km s^{-1} . The PDF is similar to a log-normal but because it is cut-off at higher column densities (around $A_v = 10$) most likely because of an increasing optical depth, we refrain from trying to fit the data. In addition, the highest column density range can not be traced by the ^{13}CO line because its critical density is below the densities of the clumps or cores (around 10^{4-6} cm^{-3}) that populate the high A_v -range. The blue PDF includes all emission along the line-of sight towards the GMC between velocities of 0 to 132 km s^{-1} . This PDF is shifted by $A_v \sim 8-10$ towards higher column density values compared to the red PDF. Though the ^{13}CO line still saturates in each individual cloud along the sightline above $A_v \sim 10$, the total H_2 -PDF can still go up to higher values. These findings confirm our direct calculation of the contaminating column density (Sect. 3.2.3). The blue PDF corresponds very well over the whole A_v -range (10–40) with the PDF obtained from the dust column density (Fig. 4), indicating that the conversions H_2 from ^{13}CO and H_2 from dust are rather consistent.

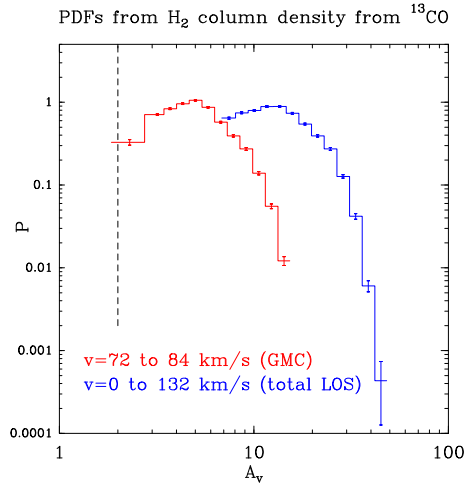


Fig. 5. PDFs of the whole GMC including G28.37+0.07, obtained from H_2 column density maps derived from ^{13}CO emission. The blue PDF contains all emission along the line-of-sight (LOS) towards the GMC ($v = 0$ to 132 km s^{-1}); the red PDF contains only emission coming from the bulk emission of the cloud ($v = 72$ to 84 km s^{-1}). The long dashed line is the $A_v = 2$ level outlining the GMC.

5. Clipping effects and completeness level

Comparing the PDFs shown in Fig. 4 reveals that the PDF constructed only from the pixels defining the IRDC has no log-normal part in contrast to that obtained for the whole GMC. The reason is that the PDF of the IRDC alone is not sampled down to the lowest A_v -ranges and a PDF from an image where the low column density pixels are ignored is just composed of a power-law distribution (Schneider et al. 2015).

To illustrate this cropping effect, we made PDFs from pixels above different A_v -thresholds for the whole GMC (Fig. 3) using the *Herschel* dust column density map (see right panel of Fig. 3). Figure 6 shows how the PDF changes from a distribution that can be described by a log-normal plus power-law distribution (for pixels above $A_v = 12$) into a purely power-law distribution (for pixels above $A_v = 20$). Note that the curves “shift” due to different normalisations (the area/number of pixels decreases with increasing A_v -level). We emphasise that the contour outlining the GMC still comprises higher column density gas ($A_v > 10$), which is well above the threshold of typically $A_v = 1$ or 2 (e.g. Lada et al. 2010) that is commonly used to “define” the extent of a molecular cloud. The dust continuum map, however, suffers from line-of-sight contamination on a high level of at least $A_v \sim 7$ –10 because (i) this is the value at the map borders outside of the GMC (Fig. 6); and (ii) it also corresponds to the H_2 column density derived from ^{13}CO adding all emission outside of the bulk emission of the GMC (Sect. 3.2).

In any case, the main point of this exercise is to demonstrate that the PDF of the IRDC (Fig. 4, top) can be fitted by a pure power law⁷ above A_v -values of ~ 30 . This PDF can be directly compared to that shown in BTK (their Fig. 3, left panel), which shows a broad PDF fitted by a log-normal distribution with a width of $\sigma = 1.7$. The two PDFs differ in the lowest and highest column density ranges. The authors BTK state a completeness limit of $A_v = 3$, implying that their extinction map of

⁷ Note that fitting to binned data is not always statistically robust as discussed in Virkar & Clauset (2014). However, we make PDFs of $\eta = \ln(N/\langle N \rangle)$ in linear binning with bin size $d\eta = 0.15$, while Virkar & Clauset use log-binning (of $N/\langle N \rangle$) when applied to our case.

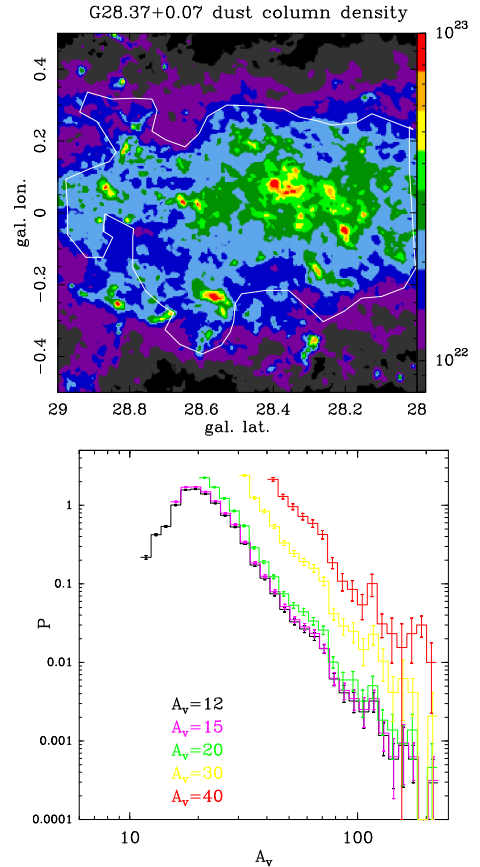


Fig. 6. Top: H_2 column density from dust continuum with the white contour, roughly outlining the GMC in which G28.37+0.07 is embedded. Bottom: PDFs of the GMC, derived from the dust column density map from the left above different A_v -thresholds (indicated with different colours and given in the panel).

the IRDC goes down to that value at the borders⁸. As outlined in Sect. 3.2, we show that the IRDC is the centre region of a GMC and the column density values remain high (at least on a level of $A_v \sim 10$ to 20) at the borders. Though the higher angular resolution extinction map may resolve smaller spatial structures in which high and low column density regions are mixed, the border regions look homogeneous at a low A_v value. In addition, the highest column density pixels (above $A_v \sim 100$ –200) are missing in BTK because they were masked out. However, if we compare only the A_v range between ~ 30 to ~ 100 (which we find to be the column density range of the IRDC), the PDF of BTK could be well fit by a power-law distribution and our results would be consistent.

6. Global and local gravitational collapse of IRDCs

The power-law distribution we find for all PDFs of the IRDCs in our sample is in accordance with the power-law tails found for IR-bright clouds (Lombardi et al. 2008; Kainulainen et al. 2009; Hill et al. 2011; Schneider et al. 2012, 2013, 2015; Russeil et al. 2013; Tremblin et al. 2014; Alves de Oliveira et al. 2014). In these studies, a clear turnover from a log-normal distribution for low column densities (typically from $A_v < 1$ up to A_v of a few magnitudes) into a power-law tail was observed. Self-gravity

⁸ In Kainulainen & Tan (2013) the same map of G28.37+0.07 was produced with a slightly different method and a value of $A_v = 7$ was given for the same completeness level, better fitting with our findings.

as the dominating (over pressure and magnetic fields) process to form this power-law tail was advocated by numerical models (Klessen 2000; Federrath et al. 2008b; Kritsuk et al. 2011) and observationally supported by Froebrich & Rowles (2010) and Schneider et al. (2013). Recently, Rathborne et al. (2014) obtained a PDF from ALMA continuum data for the IRDC G0.253+0.016 in the central molecular zone (CMZ), which has a log-normal shape and some excess at highest column densities they attribute to self-gravity within the most massive cores. In the following, we will present additional evidence from radial column density profiles and molecular line observations that massive IRDCs can be in gravitational collapse, which is reflected in the power-law distribution of the column density.

6.1. The link between the PDF power-law tail and the column density profile

Provided that the power-law distribution of the PDF is only due to gravity, and if we assume spherical symmetry, the power-law slope s of the PDF is related to the exponent α of a radial density profile according to $\rho(r) \propto r^{-\alpha}$ and $\alpha = -2/s + 1$ (Federrath & Klessen 2013). For the PDFs of the IRDCs in our sample (Figs. 4 and B.1), we obtain values between ~ 1.5 and 2 for α ⁹. This is consistent with a structure dominated by self-gravity, i.e. local free-fall of individual cores and clumps and global collapse (Girichidis et al. 2014; Schneider et al. 2015). The extent to which the variations in the slope can be attributed to the evolutionary state of the cloud is not clear. As was shown in simulations (Ballesteros-Paredes et al. 2011; Federrath & Klessen 2013), the power-law flattens with time/increasing star formation efficiency. In our small sample of IRDCs, however, the low value of α points towards an early state in cloud evolution.

To derive a PDF-independent value for the exponent α , we fitted the radial column density profiles of G28.37+0.07, G28.53-0.25, and G18.82-0.28 (Fig. 7). From our sample, only these sources can roughly be approximated as “spherical”, G11.11-0.12 is too filamentary. Assuming again spherical geometry, the column density N can be expressed as $N \propto \rho(r) \times r \propto r^{1-\alpha}$, thus the exponents α from the PDF and the column density profile should correspond. Within the error bars, this is approximately the case (see Table 2), we obtain from the column density profile $\alpha = 1.67, 1.82, 1.60$ for G28.37+0.07, G28.53-0.25, and G18.82-0.28, respectively, compared to $\alpha = 1.58, 1.97, 1.54$, deduced from the PDF. Figure 7 displays the column density of the pixels around the maximum column density as a function of their distance to this maximum. We only fitted the points within a circle of 3 pc around the maximum column density. The values of α between 1.6 and 1.8 determined from the column density profiles are consistent with gravitational collapse on large scales. In the next section, we demonstrate that complementary molecular line data indeed point towards this kind of a scenario for our IRDCs.

6.2. Collapse signatures in molecular line profiles

The shape of molecular line profiles allows us to disentangle various dynamic processes, such as outflows, rotation, and infall, within a molecular cloud/clump/core. The inwards motion of gas caused by gravity in regions of star formation leads to a self-absorbed emission line profile (“double-peak” or “P-Cygni profile”) of an optically thick line. An optically thin line must

⁹ Note that these are lower limits for α because the power-law slope steepens because of line-of-sight contamination (Schneider et al. 2015).

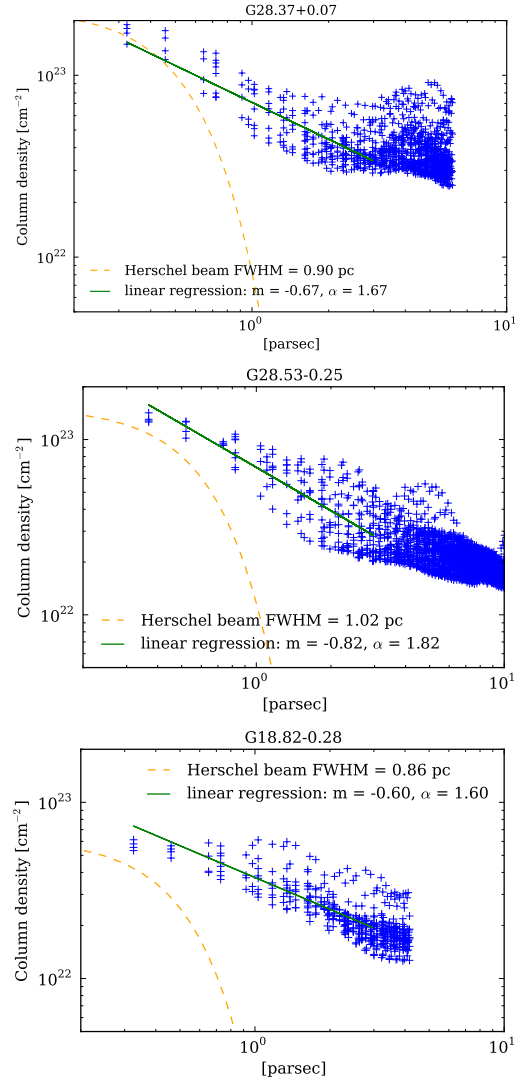


Fig. 7. Radial column density profile for G28.37+0.07, G28.53-0.25, and G18.82-0.28. Each cross in the panels represents one pixel value in the map. The x-axis gives the distance to the centre of the ellipse (x-axis). The dashed orange line indicates the *Herschel* beam (Gaussian profile with a FWHM of 36'' displayed in log-log format). The exponent α was deduced from fitting the column density profile ($N \propto r^{1-\alpha}$). For the fit, we included only the pixels that were inside a radius of 3 pc.

Table 2. Exponents α and their errors $\Delta\alpha$, assuming a spherical density distribution $\rho(r) \propto r^{-\alpha}$, derived from the slope s of the power-law distribution from the PDF (Col. 2) and from the column density profiles (Col. 3).

Region	α (PDF)	$\Delta\alpha$ (PDF)	α (profile)	$\Delta\alpha$ (profile)
G28.37+0.07	1.58	0.02	1.67	0.02
G28.53-0.25	1.97	0.08	1.82	0.06
G18.82-0.28	1.54	0.02	1.60	0.03

then peak in the self-absorbed dip to exclude the possibility of several line components and rotation. Simple early models (see e.g. Myers et al. 1996, and references therein) are based on a gravitationally collapsing isothermal sphere and predict a “blue asymmetry” i.e. with increasing infall speed, the blue peak in the double-peak profile becomes brighter than the red peak. However, recently Smith et al. (2012, 2013) showed that collapsing *embedded* cores show more complex line profiles because of the contribution of the enclosing filament.

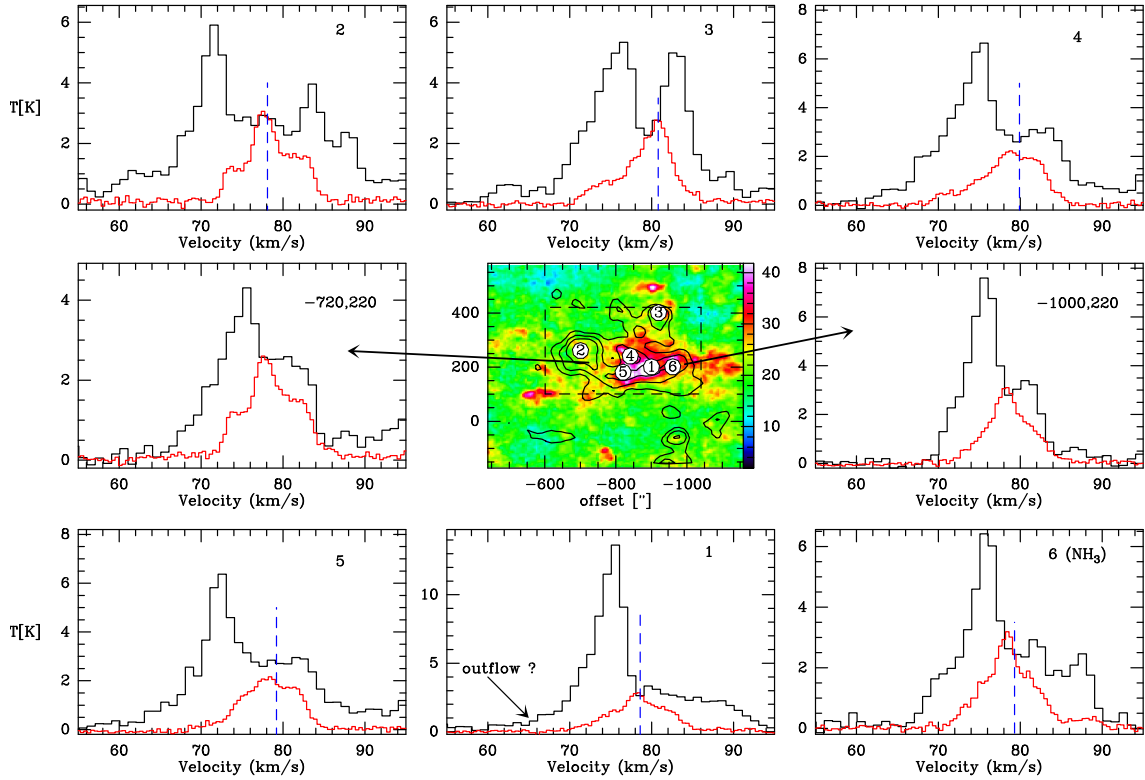


Fig. 8. Middle panel: line integrated ^{12}CO 3 \rightarrow 2 emission in K km s^{-1} on a main beam temperature scale (between 72 and 84 km s^{-1}) of G28.37+0.07. The dust column density from *Herschel* is overlaid as black contours (levels 4, 5, 7 $\times 10^{22} \text{ cm}^{-2}$). The dashed lines outline the area displayed in Fig. 9, and the numbering from 1 to 6 indicates the position of submm-continuum sources seen with ATLASGAL and subsequently observed in N_2H^+ (Tackenberg et al. 2014). The ^{12}CO 3 \rightarrow 2 (black) and ^{13}CO 1 \rightarrow 0 (red) spectra at these positions are displayed in the panels around. Additionally, we show spectra from two positions (indicated by arrows) off the sources (indicated by arrows) but still within the molecular cloud. The blue-dashed line denotes the centre velocity of the N_2H^+ line.

In any case, there are a number of examples where infall signatures in spectral profiles have been detected and successfully modelled, mostly for isolated low-mass cores (e.g. Walker et al. 1994; Tafalla et al. 2002) and high-mass cores (e.g. Csengeri et al. 2011). Gravitational collapse of a whole filament on a scale of a few pc was seen for the DR21 ridge (Schneider et al. 2010) and Serpens-South (Kirk et al. 2013). Global collapse of IRDCs was suggested for SDC335 (Peretto et al. 2013), G79.3+0.3 (Carey et al. 2000), and G32.03+0.05 (Battersby et al., priv. comm.).

For the IRDCs in our sample, we use the ^{12}CO 3 \rightarrow 2 line from the COHRS archive as an optically thick tracer, and ^{13}CO 1 \rightarrow 0 from the GRS as the optically thin line. For better comparison, we smoothed the ^{12}CO data to the resolution of the ^{13}CO data (45"). Both CO data sets are only available for G28.37+0.07. For this source, we show in Fig. 8 the velocity integrated ^{12}CO map and spectra from selected positions, i.e. the strongest submm-continuum sources from ATLASGAL (Contreras et al. 2013; Csengeri et al. 2014) and two positions off-source but within the cloud. The continuum sources were also observed in the optically thin N_2H^+ 1 \rightarrow 0 line at 93.173 GHz with a velocity resolution of 0.2 km s^{-1} (Tackenberg et al. 2014), and the centre velocities reported in their Table 3 are indicated as a dashed blue line in Fig. 8. The same velocity of sources 2 and 6 are also derived by Shipman et al. (2014) based on pointed observations of optically thin lines, such as N_2H^+ and C^{17}O , using *Herschel* and APEX.

The ^{13}CO 1 \rightarrow 0 line consists of several components, but there is no “double-peak” feature and the centre velocity of the main Gaussian corresponds very well to the velocities determined

with N_2H^+ , so that ^{13}CO emission is optically thin or only moderately optically thick. Most importantly, the main ^{13}CO line peaks in the gap of a double-peaked ^{12}CO line, best visible for sources 1 and 4. This sort of ^{12}CO profile seen for basically all spectra in the figure shows the classical infall signature profile with a brighter blue peak than the red peak. The optically thin ^{13}CO line is blue shifted with respect to the self-absorption gap, clearly visible for positions 1 and 6 and those off the sources (offsets $-720''$, $220''$ and $-1000''$, $220''$), but less clearly for the remaining positions. Source 2 (most likely a protocluster, see Sect. 3.1) is more complex with several line components, associated with CH_3OH and H_2O masers (Pillai et al. 2006; Wang et al. 2008, 2014) and harbours a hot-core (Zhang et al. 2009). Some sources, in particular source 1 for velocities lower than $\sim 70 \text{ km s}^{-1}$, show broad wings that possibly indicate outflow emission from the protostellar object. This becomes more evident when the on-source ^{12}CO spectra are compared to two spectra (indicated by offset $-720''$, $220''$ and $-1000''$, $220''$ in Fig. 8) that are located off source but still within the IRDC. These also show the self-absorption dip but no prominent wings. Though it is out of our scope to go into more detail for outflows, it is important to recognise those as indicators for star formation.

Though ^{12}CO is not the best tracer for infall signatures, HCO^+ or HCN are better suited because they show a clearer profile (Schneider et al. 2010), the general behaviour is the same. Since we can rather safely exclude the possibility that the double-peak profile of ^{12}CO is due to several line components using the ^{13}CO spectra and the N_2H^+ velocity information, the most likely explanation is that we observe inwards motion of gas.

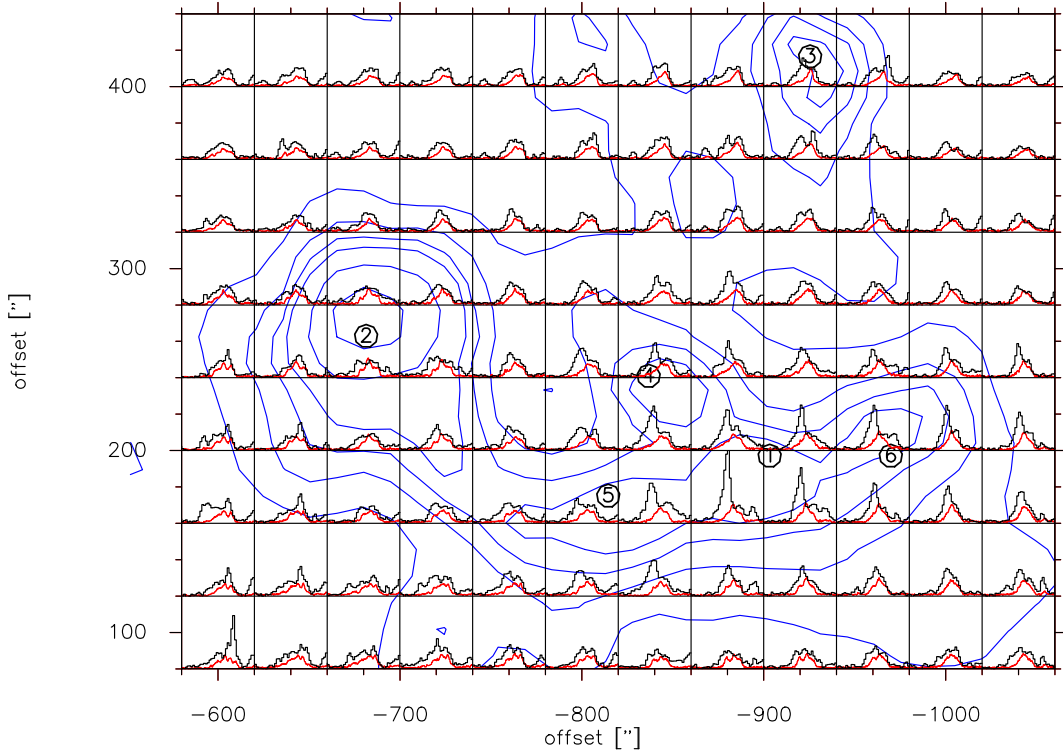


Fig. 9. Main beam brightness temperature spectra of ^{12}CO $3 \rightarrow 2$ (black) and ^{13}CO $1 \rightarrow 0$ (red) emission in the velocity range 55 to 95 km s $^{-1}$ and temperature range -0.2 to 12 K. The area corresponds to the centre region of the IRDC G28.37+0.07, outlined in Fig. 8. The dust column density from *Herschel* is overlaid as blue contours (levels 4, 5, 7, 10, 16 $\times 10^{22}$ cm $^{-2}$), and the numbering from 1 to 6 indicates the position of submm-continuum sources labelled using ATLASGAL and subsequently observed in N_2H^+ (Tackenberg et al. 2014).

There are several arguments as to why we think that the ^{12}CO profile is not simply caused by a low-density, subthermally excited foreground cloud. First, we would not observe the blue asymmetry profile systematically, but the two apparent peaks of the ^{12}CO line would be equally strong across the map. Outflows and rotation would also give rise to both a red and a blue asymmetric line. Second, the ^{13}CO line may become optically thick at the positions with highest (column) density and should then also show self-absorption features (which is not the case). Third, the *Herschel* column density maps indicate that the IRDCs are cold, with an increase in excitation temperature into the cloud at least at the positions of protostellar sources. This contrasts with the requirement of a colder outer layer causing self-absorption.

Local infall on the pre- and protostellar sources is seen in H_2O observations (Shipman et al. 2014) of source 2 and source 6 (labelled G28-MM and G28-NH $_3$ in Shipman et al. 2014), where the water line appears in absorption and is systematically redshifted relative to the systemic velocity of the clump. However, comparing ^{12}CO and ^{13}CO spectra across the whole IRDC (the two off-source spectra in Figs. 8 and 9) shows that the double-peak profiles extend well beyond the source positions and are found basically everywhere inside the blue contours, outlining the IRDC. We thus propose that the whole IRDC is in global collapse.

In Appendix D, we show that infall ^{12}CO profiles are also observed for G11.11-0.12. Because we have no complementary ^{13}CO data, the global collapse scenario there is more tentative. However, single pointings in H_2O in G11.11.-0.12 (Shipman et al. 2014) already show infall signatures similar to G28.37+0.07, so that we conclude that global collapse could probably be a feature shared by all massive IRDCs that are embedded in GMCs. Higher angular resolution molecular line

observations using, e.g. HCO^+ or HCN and the optically thin isotopologues H^{13}CO^+ or H^{13}CN as line tracers, are required to investigate this scenario in more detail.

7. Summary and conclusions

Our study using *Herschel*, ATLASGAL, and ^{12}CO and ^{13}CO molecular data shows that massive IRDCs are embedded in more extended molecular clouds and have similar physical properties (peak and average column density, surface density) as ridges, i.e., the densest, central regions of GMCs. The PDFs for all four IRDCs obtained from *Herschel* dust column density maps show a power-law distribution, which we interpret as arising from gravitational contraction. There is no log-normal part in the PDF because the PDF is constructed from a cropped image, focussing on the densest region within the GMC. On the other hand, the PDF of the associated GMC shows a log-normal form for lower column densities and a power law for high densities.

We give two additional and independent arguments for the dominance of self-gravity for the IRDCs we present. First, fitting the radial column density profiles leads to similar exponents $\alpha = 1.70 \pm 0.07$ as derived from the slope of the PDF power-law distribution ($\alpha = 1.66 \pm 0.18$), and is consistent with self-gravity ($\alpha = 1.5$ to 2 assuming a spherical density distribution). Second, molecular line profiles of the optically thick ^{12}CO $3 \rightarrow 2$ line show self-absorption at the velocity of the bulk emission of the cloud, indicating locally infalling gas on proto- and prestellar cores and on the global IRDC scale.

The self-gravitating scenario on all scales is consistent with what is found in numerical models. Just to list a few, Ballesteros-Paredes et al. (2011), Kritsuk et al. (2011), Federrath & Klessen (2013), Girichidis et al. (2014), Ward et al. (2014)

obtain a log-normal+power-law tail PDF (density or column density) for their simulations including self-gravity and turbulence, but without external pressure (such as radiative feedback). First, turbulence creates a self-similar structure of the gas that is well represented by a purely log-normal PDF. As soon as self-gravity is switched on and collapse proceeds for some time, the hierarchical structure in clouds is affected and the (column) density PDF departs from a log-normal and forms a power-law tail. Studies focussing on the spatial cloud structure, using power spectra or the Δ -variance (see Schneider et al. 2011, and references therein) also show that molecular clouds lose their hierarchical structure and show characteristic scales as soon as star formation sets in. Federrath & Klessen (2013, Fig. 4) link the change of the slope of the PDF to the star formation efficiency (SFE). Their simulations are consistent with our observations.

The PDFs of the IRDCs we present all show a power-law distribution with similar slopes, regardless of their evolutionary states: G18.82-0.28 and G28.37+0.07 show bright peaks at 70 μm , and in G11.11-0.12 the presence of IR-bright protostars was demonstrated (Henning et al. 2010). The IRDC G28.53-0.25 is in a very early stage because it contains no (F)IR-bright peaks. Despite its youth, this cloud shows a power-law distribution over all column densities. Given the uncertainties in the column-density PDFs, the slope differences are marginal and it is difficult to distinguish an SFE of 5% from 20% for most parameter sets of the simulations (note that the PDFs from simulations differ from those of observations, because they are averages over all three lines of sight from different directions). Given that the IRDCs of our sample are all in a collapsing state, and most of them have already started forming stars, they might well have local SFE of $\sim 5\%$ in agreement with the models shown in Federrath & Klessen (2013).

Acknowledgements. We thank P. Girichidis for discussions on collapse scenarios. N.S. and S.B. acknowledge support by the ANR-11-BS56-010 “STARFICH”. N.S., V.O., and R.S.K. acknowledge funding from the DFG priority program SPP 1573 “Physics of the ISM” (project number OS177/2-1 and KL 1358/19-1). R.S.K. acknowledges subsidies from the collaborative research project SFB 881 (“The Milky Way System”, subprojects B1, B2, and B5), and support from the ERC Framework Programme FP7/2007-2013 via the ERC Advanced Grant STARLIGHT (project number 339177). R.S.K. thanks for the warm hospitality at the Department of Astronomy and Astrophysics at the University of California at Santa Cruz and the Kavli Institute for Particle Astrophysics and Cosmology at Stanford University during a sabbatical stay in 2014 and 2015. T.Cs. acknowledges financial support for the ERC Advanced Grant GLOSTAR under contract No. 247078.

References

- Alves de Oliveira, C., Schneider, N., Merin, B., et al. 2014, *A&A*, 568, A98
 Ballesteros-Paredes, J., Vázquez-Semadeni, E., & Gazol, A. 2011, *MNRAS*, 416, 1436
 Beuther, H., Linz, H., Tackenberg, J., et al. 2013, *A&A*, 553, A81
 Bohlin, R. C., Savage, B. D., & Drake, J. F. 1978, *ApJ*, 224, 132
 Butler, M., Tan, J., & Kainulainen, J. 2014, *ApJ*, 782, L30
 Carey, S. J., Clark, F. O., Egan, M. P., et al. 1998, *ApJ*, 508, 721
 Carey, S. J., Feldman, P. A., Redman, R. O., et al. 2000, *ApJ*, 543, L157
 Contreras, Y., Schuller, F., Urquhart, J. S., et al. 2013, *A&A*, 549, A45
 Csengeri, T., Bontemps, S., Schneider, N., et al. 2011, *A&A*, 527, A135
 Csengeri, T., Urquhart, J. S., Schuller, F., et al. 2014, *A&A*, 565, A75
 Dempsey, J. T., Thomas, H. S., & Currie, M. J. 2013, *ApJS*, 209, 13
 Egan, M. P., Shipman, R. F., Price, S. D., et al. 1998, *ApJ*, 494, L199
 Federrath, C., & Klessen, R. S. 2013, *ApJ*, 763, 51
 Federrath, C., Klessen, R. S., & Schmidt, W. 2008a, *ApJ*, 688, L79
 Federrath, C., Glover, S., & Klessen, R. S. 2008b, *Phys. Scr.*, 132, 014025
 Froebrich, D., & Rowles, J. 2010, *MNRAS*, 406, 1350
 Girichidis, P., Konstantin, L., Whitworth, A. P., et al. 2014, *ApJ*, 781, 91
 Griffin, M., Abergel, A., Abreau, A., et al. 2010, *A&A*, 518, L3
 Heiderman, A., Evans, N. J. E. II, Allen, L. E., et al. 2010, *ApJ*, 723, 1019
 Hennemann, M., Motte, F., Schneider, N., et al. 2012, *A&A*, 543, L3
 Henning, T., Linz, H., Krause, O., et al. 2010, *A&A*, 518, L95
 Hill, T., Motte F., Didelon P., et al. 2011, *A&A*, 533, A94
 Jackson, J. M., Rathborne, J. M., Shah, R. Y., et al. 2006, *ApJS*, 163, 145
 Kainulainen, J., & Tan, J. C. 2013, *A&A*, 549, A53
 Kainulainen, J., Beuther, H., Henning, T., & Plume, R. 2009, *A&A*, 508, L35
 Kainulainen, J., Alves, J., Beuther, H., et al. 2011a, *A&A*, 536, A48
 Kainulainen, J., Beuther, H., Banerjee, R., et al. 2011b, *A&A*, 530, A64
 Klessen, R. S. 2000, *ApJ*, 535, 869
 Kirk, H., Myers, P. C., Bourke, T. L., et al. 2013, *ApJ*, 766, 115
 Kritsuk, A. G., Norman, M. L., Padoan, P., & Wagner, R. 2007, *ApJ*, 665, 416
 Kritsuk, A. G., Norman, M. L., & Wagner, R. 2011, *ApJ*, 727, L20
 Lada, C. J., Lombardi, M., & Alves, J. 2010, *ApJ*, 724, 687
 Lombardi, M., Lada, C., & Alves, J. 2008, *A&A*, 489, 143
 Marston, A. P., Reach, W. T., Noriega-Crespo, A., et al. 2004, *ApJS*, 154, 333
 Molinari, S., Swinyard, B., Bally, J., et al. 2010, *A&A*, 518, L100
 Myers, P. C., Maradones, D., Tafalla, M., et al. 1996, *ApJ*, 465, L133
 Nguyen-Luong, Q., Motte, F., Hennemann, M., et al. 2011, *A&A*, 535, A76
 Ott, S. 2011, ASP Conf. Ser. 442, eds. N. Evans, A. Accomazzi, D. J. Mink, & A. H. Rots, 347
 Padoan, P., Jones, J. T., & Nordlund, A. A. 1997, *ApJ*, 474, 730
 Peretto, N., & Fuller, G. 2010, *ApJ*, 723, 555
 Peretto, N., Fuller, G. A., Duarte-Cabral, A., et al. 2013, *A&A*, 555, A112
 Pilbratt, G., Riedinger, J., Passvogel, T., et al. 2010, *A&A*, 518, L1
 Pillai, T., Wyrowski, F., Menten, K., et al. 2006, *A&A*, 447, 929
 Poglitsch, A., Waelkens, C., Geis, N., et al. 2010, *A&A*, 518, L2
 Press, W. H., Teukolsky, S. A., Vetterling, W., & Flannery, B. P. 1992, Numerical recipes in C. The art of scientific computing, 2nd edn. (Cambridge University Press)
 Rathborne, J. M., Jackson, J. M., & Simon, R. 2006, *ApJ*, 641, 389
 Rathborne, J. M., Garay, G., Jackson, J. M., et al. 2011, *ApJ*, 741, 120
 Rathborne, J. M., Longmore, S., Jackson, J. M., et al. 2014, *ApJ*, 795, L25
 Roussel, H. 2013, *PASP*, 125, 1126
 Roy, A., Martin, P., Polychroni, D., et al. 2013, *ApJ*, 763, 55
 Russeil, D., Schneider, N., Anderson, L., et al. 2013, *A&A*, 554, A42
 Sakai, T., Sakai, N., Foster, J. B., et al. 2013, *ApJ*, 775, 31
 Schneider, N., Csengeri, T., Bontemps, S., et al. 2010, *A&A*, 520, A49
 Schneider, N., Bontemps, S., Simon, R., et al. 2011, *A&A*, 529, A1
 Schneider, N., Csengeri, T., Hennemann, M., et al. 2012, *A&A*, 540, L11
 Schneider, N., André, Ph., Könyves, V., et al. 2013, *ApJ*, 766, L17
 Schneider, N., Ossenkopf, V., Csengeri, T., et al. 2015, *A&A*, 575, A79
 Schuller, F., Menten, K., Contreras, Y., et al. 2009, *A&A*, 504, 415
 Shipman, R. F., van der Tak, F. F. S., Wyrowski, F., et al. 2014, *A&A*, 570, A51
 Smith, R. J., Shetty, R., Stutz, A. M., & Klessen, R. S. 2012, *ApJ*, 750, 64
 Smith, R. J., Shetty, R., Beuther, H., Klessen, R. S., & Bonnell, I. A. 2013, *ApJ*, 771, 24
 Simon, R., Jackson, J. M., Clemens, D. P., & Bania, T. M. 2001, *ApJ*, 551, 747
 Simon, R., Rathborne, J. M., Shah, R., et al. 2006a, *ApJ*, 653, 1325
 Simon, R., Jackson, J. M., Rathborne, J. M., et al. 2006b, *ApJ*, 639, 227
 Siringo, G., Kreysa, E., Kovacs, A., et al. 2009, *A&A*, 497, 945
 Strong, J., Bloemen, J., Dame, T., et al. 1988, *A&A*, 207, 1
 Tackenberg, J., Beuther, H., Henning, T., et al. 2014, *A&A*, 565, A101
 Tafalla, M., Myers, P. C., Caselli, P., et al. 2002, *ApJ*, 569, 815
 Teyssier, D., Hennebelle, P., & Peralut, M. 2002, *A&A*, 624, A638
 Traficante, A., Calzoletti, L., Veneziani, M., et al. 2011, *MNRAS*, 416, 2932
 Tremblin, P., Schneider, N., Minier, V., et al. 2014, *A&A*, 564, A106
 Vázquez-Semadeni, E., Gonzales, R. F., Ballesteros-Paredes, J., et al. 2008, *MNRAS*, 390, 769
 Vikar, Y., & Clauset, A. 2014, *Ann. Appl. Stat.*, 8, 89
 Walker, C. K., Narayanan, G., & Boss, A. P. 1994, *ApJ*, 431, 767
 Wang, Y., Zhang, Q., Pillai, T., et al. 2008, *ApJ*, 672, L33
 Wang, K., Zhang, Q., Testi, L., et al. 2014, *MNRAS*, 439, 3275
 Weiss, A., Neininger, N., Hüttemeister, S., & Klein, U. 2001, *A&A*, 365, 571
 Zhang, Q., Wang, Y., Pillai, T., & Rathborne, J. 2009, *ApJ*, 696, 268

Appendix A: *Herschel* maps of infrared dark clouds

In this section, we show the whole sample of far-IR-data from *Herschel* (70 μm and 500 μm data) and ATLASGAL (870 μm), and column density and temperature maps obtained from SED

fits for the IRDCs G11.11-0.12 (“snake”), G18.82-0.28 (Cloud A), and G28.53-0.25 (Cloud D). In addition, molecular line data maps (^{13}CO 1 \rightarrow 0 for G18.82-0.28 and G28.53-0.25, and ^{12}CO 3 \rightarrow 2 for G11.11-0.12) of the associated GMC are shown.

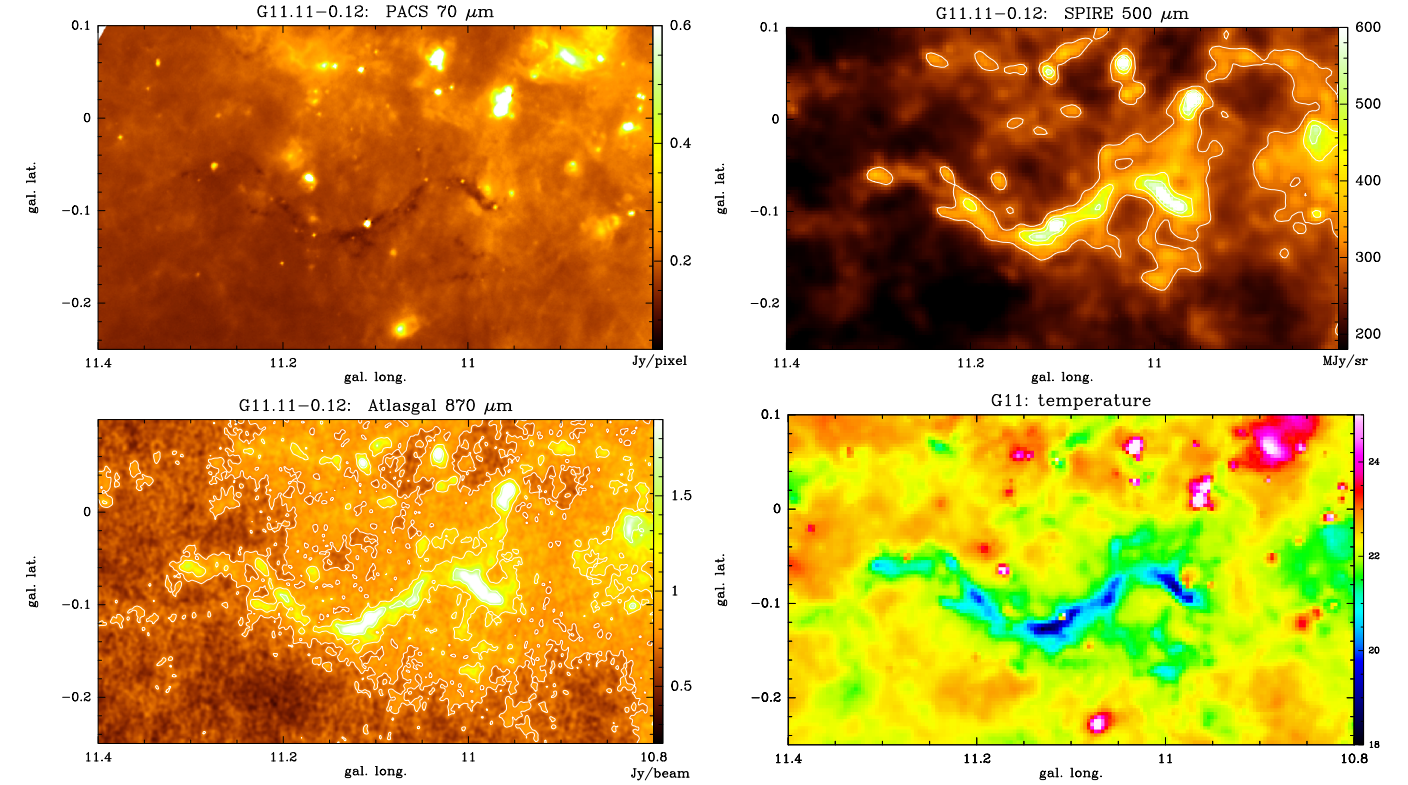


Fig. A.1. PACS 70 μm map, SPIRE 500 μm , and ATLASGAL 870 μm maps of G11.11-0.12 (the “snake”). The long filamentary structure is well visible as a dark (bright) feature in the 70 μm (500, 870 μm) maps. *Bottom right:* temperature map from SED fit 160–500 μm .

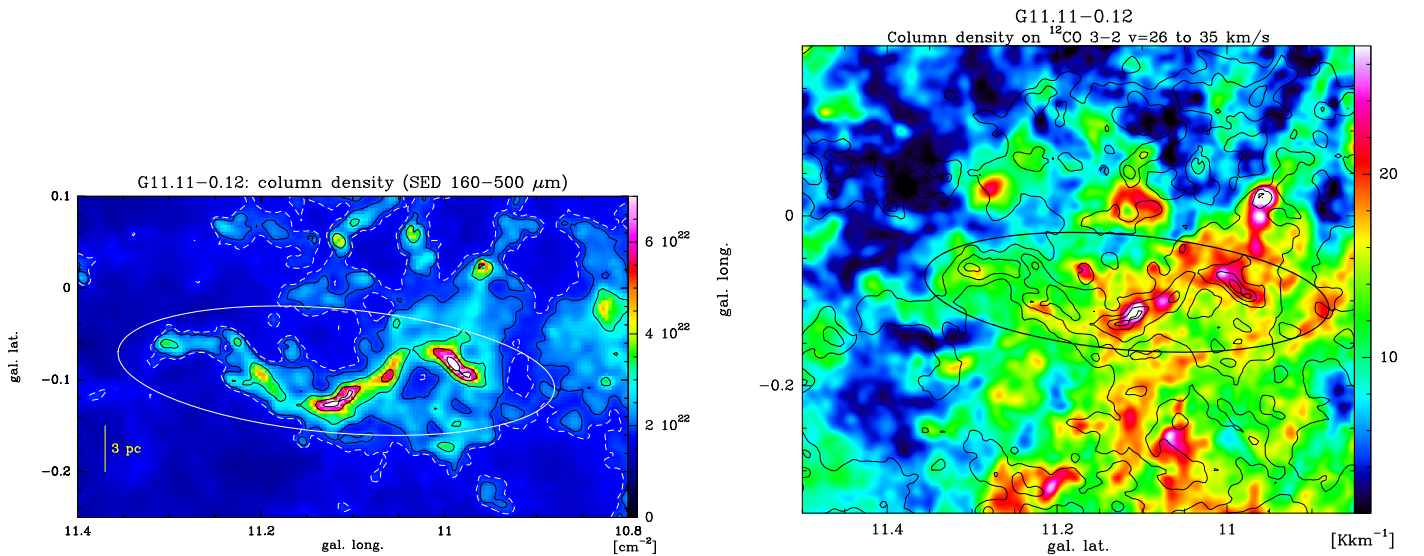


Fig. A.2. *Left:* column density map of G11.11-0.12, obtained from SED fit to *Herschel* 160, 250, 350, 500 μm data. The black contours indicate the levels $N_{\text{dust}} = 2, 3, 5, 7 \times 10^{22} \text{ cm}^{-2}$, the white-dashed contour outlines the approximate completeness level, and ellipse is taken from Simon et al. (2006b), defining the IRDC. *Right:* line integrated ^{12}CO 3 \rightarrow 2 emission in colour scale (in $[\text{K km s}^{-1}]$) between $v = 26$ and 35 km s^{-1} , the velocity range of the bulk emission of G11.11-0.12 and the associated GMC. The *Herschel* H_2 column density is overlaid as black contours (levels 1.5, 2, 3, 5, $7 \times 10^{22} \text{ cm}^{-2}$) and the IRDC is outlined by an ellipse (Simon et al. 2006b).

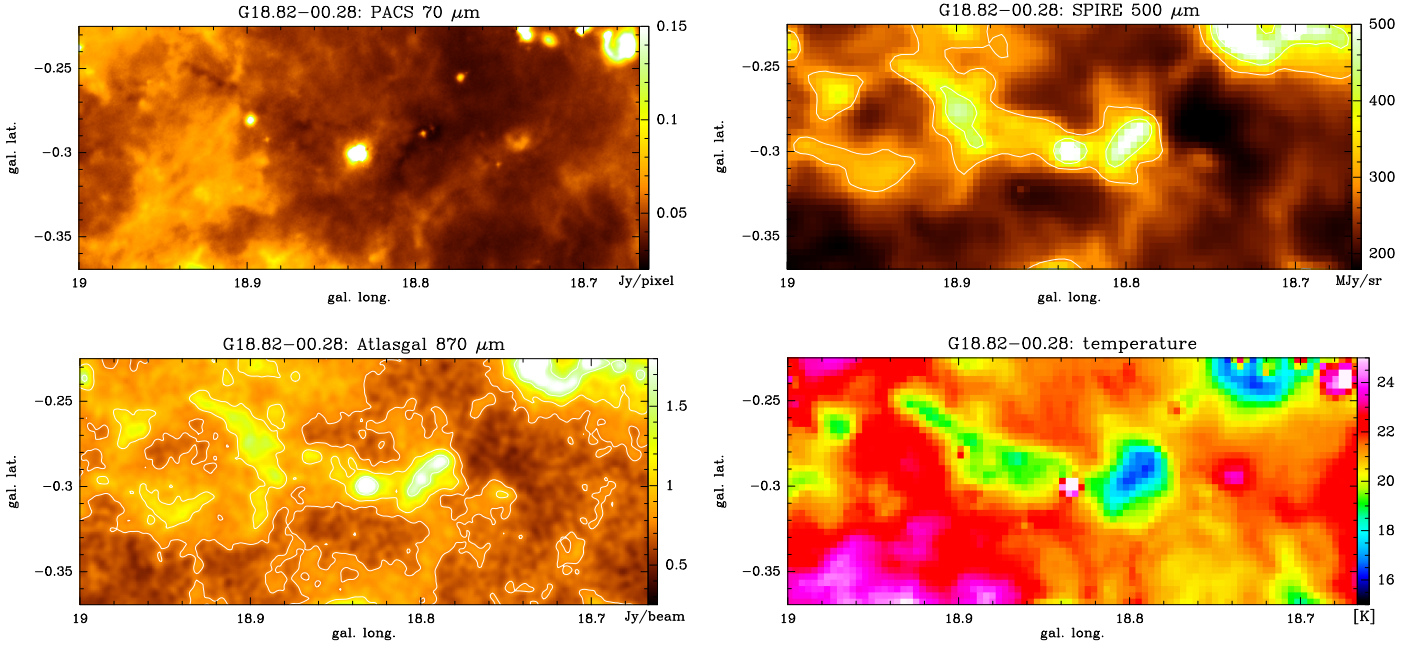


Fig. A.3. PACS 70 μm map, SPIRE 500 μm , and ATLASGAL 870 μm maps of IRDC G18.82-0.28 (Cloud A). The long filamentary structure is well visible as a dark (bright) feature in the 70 μm (500, 870 μm) maps. *Bottom right:* temperature map from SED fit 160–500 μm .

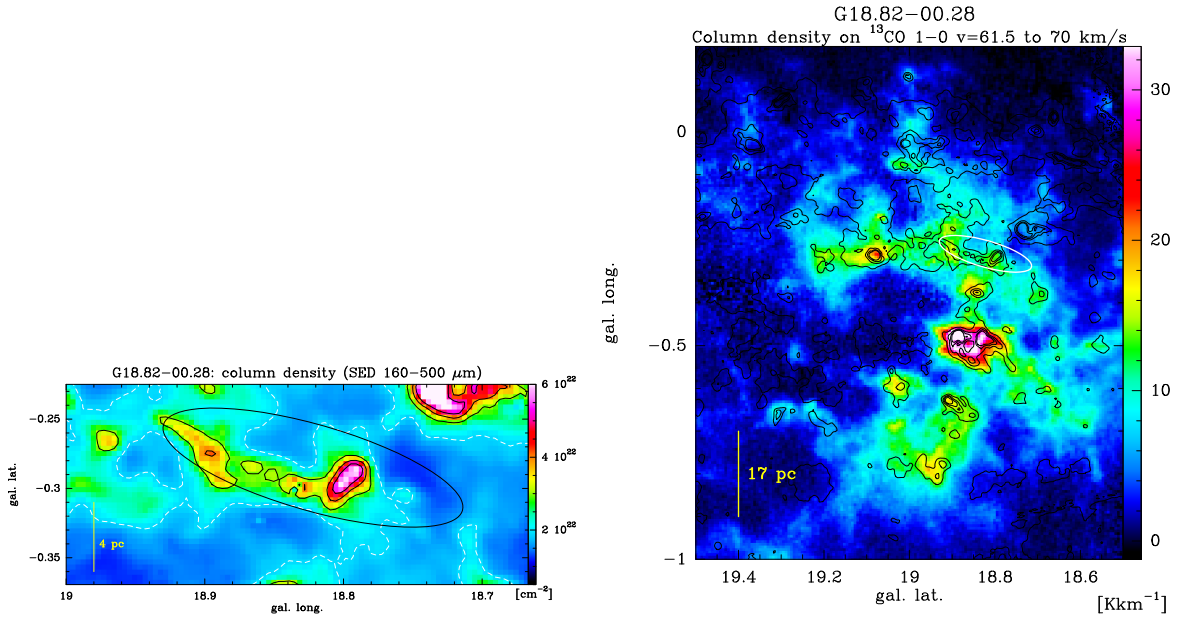


Fig. A.4. *Left:* column density map of G18.82-0.28, obtained from SED-fit to *Herschel* 160, 250, 350, 500 μm data. Black contours indicate the levels $N_{\text{dust}} = 2$ to $5 \times 10^{22} \text{ cm}^{-2}$ in steps of 10^{22} cm^{-2} , white-dashed contour outlines the approximate completeness level, and ellipse is taken from Simon et al. (2006b), defining the IRDC. *Right:* line integrated ^{13}CO 1 \rightarrow 0 emission in colour scale (in K km s^{-1}) between $v = 61$ and 70 km s^{-1} , the velocity range of the bulk emission of G18.82-0.28 and the associated GMC. Note that this GMC was already identified as a coherent cloud complex in Schuller et al. 2009. The *Herschel* H_2 column density is overlaid as black contours (levels 1, 2, 3, 4, $5 \times 10^{22} \text{ cm}^{-2}$) and the IRDC is outlined by an ellipse (Simon et al. 2006b).

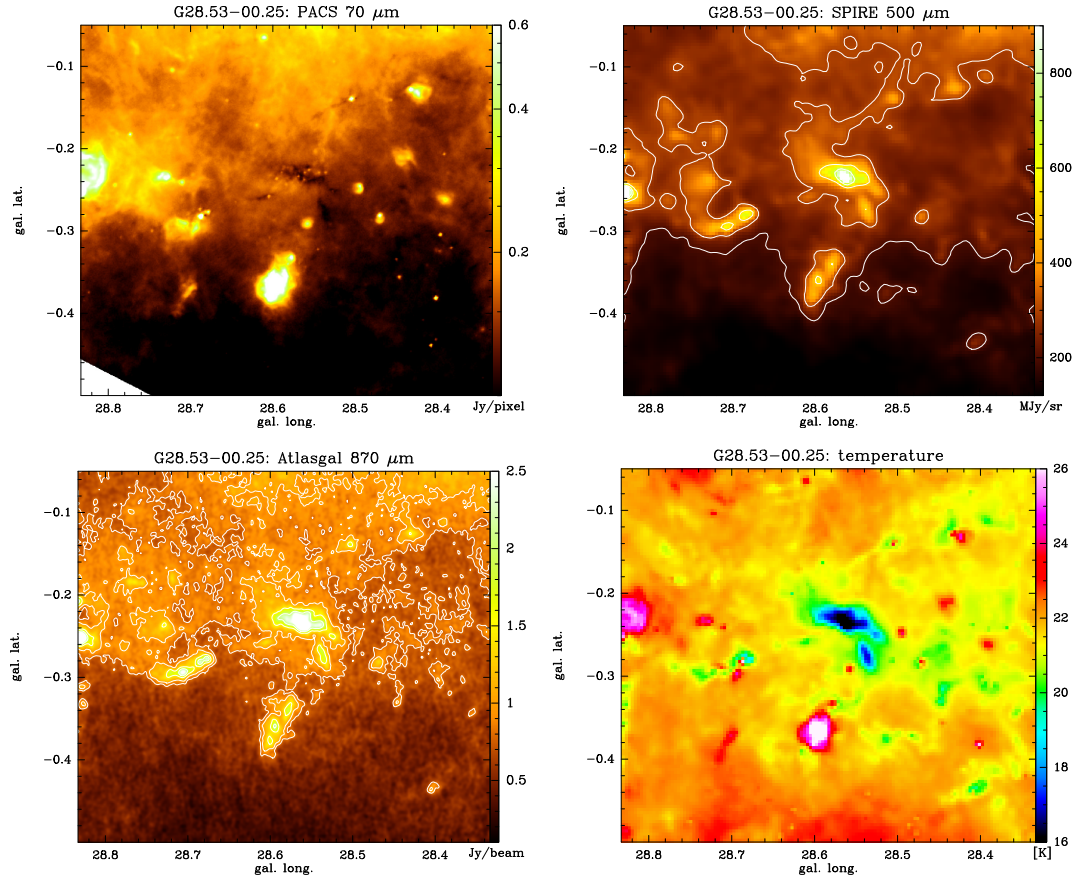


Fig. A.5. PACS 70 μm map (*left*), SPIRE 500 μm (*middle*) and ATLASGAL 870 μm maps of G28.53-0.25 (Cloud D). The long filamentary structure is well visible as a dark (bright) feature in the 70 μm (500, 870 μm) maps. *Bottom right*: temperature map from SED fit 160–500 μm .

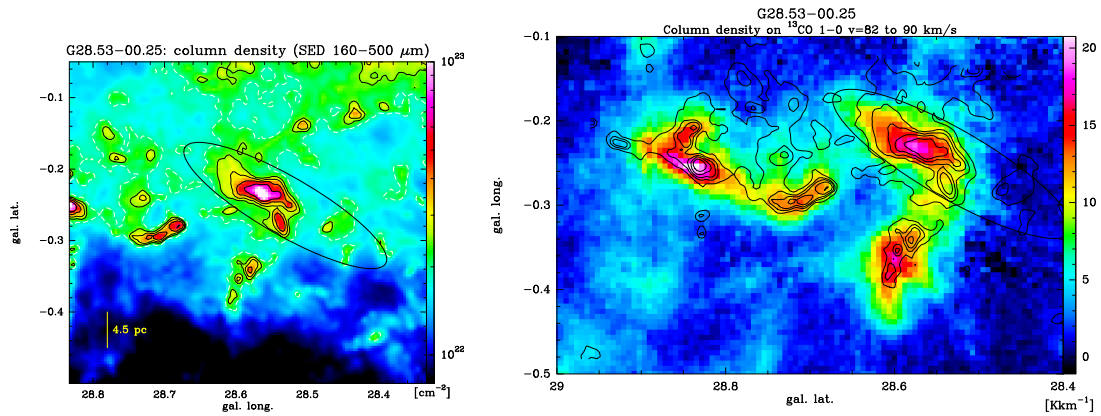


Fig. A.6. *Left*: column density map of G28.53-0.25, obtained from SED fit to *Herschel* 160, 250, 350, 500 μm data. Black contours indicate the levels $N_{\text{dust}} = 2.5, 3, 4, 6 \times 10^{22} \text{ cm}^{-2}$, white-dashed contour outlines the approximate completeness level, and ellipse is taken from Simon et al. (2006b), defining the IRDC. *Right*: line integrated ^{13}CO 1 \rightarrow 0 emission in colour scale (in K km s^{-1}) between $v = 82$ and 90 km s^{-1} , the velocity range of the bulk emission of G28.53-0.25, and the associated GMC. The *Herschel* H_2 column density is overlaid as black contours (levels 2, 2.5, 3, 4, $6 \times 10^{22} \text{ cm}^{-2}$) and the IRDC is outlined by an ellipse (Simon et al. 2006b).

Appendix B: Probability distribution functions of column density for IRDCs

Probability distribution functions of column density, determined from *Herschel* data, for the IRDCs G11.11-0.12 (“snake”), G18.82-0.28 (Cloud A), and G28.53-0.25 (Cloud D) are shown. The assumption of a constant line-of-sight temperature for each pixel affects the accuracy of the column density

maps in massive, UV-illuminated GMCs with internal embedded (proto)stars, and can lead to an underestimation of the column density map. We carefully checked each SED fit for each pixel and always found very good fitting results. In addition, the IRDC we study here are not strongly affected by radiation; G28.53-0.25 is even not correlated with any protostellar object, so we are confident in the validity of our column density maps.

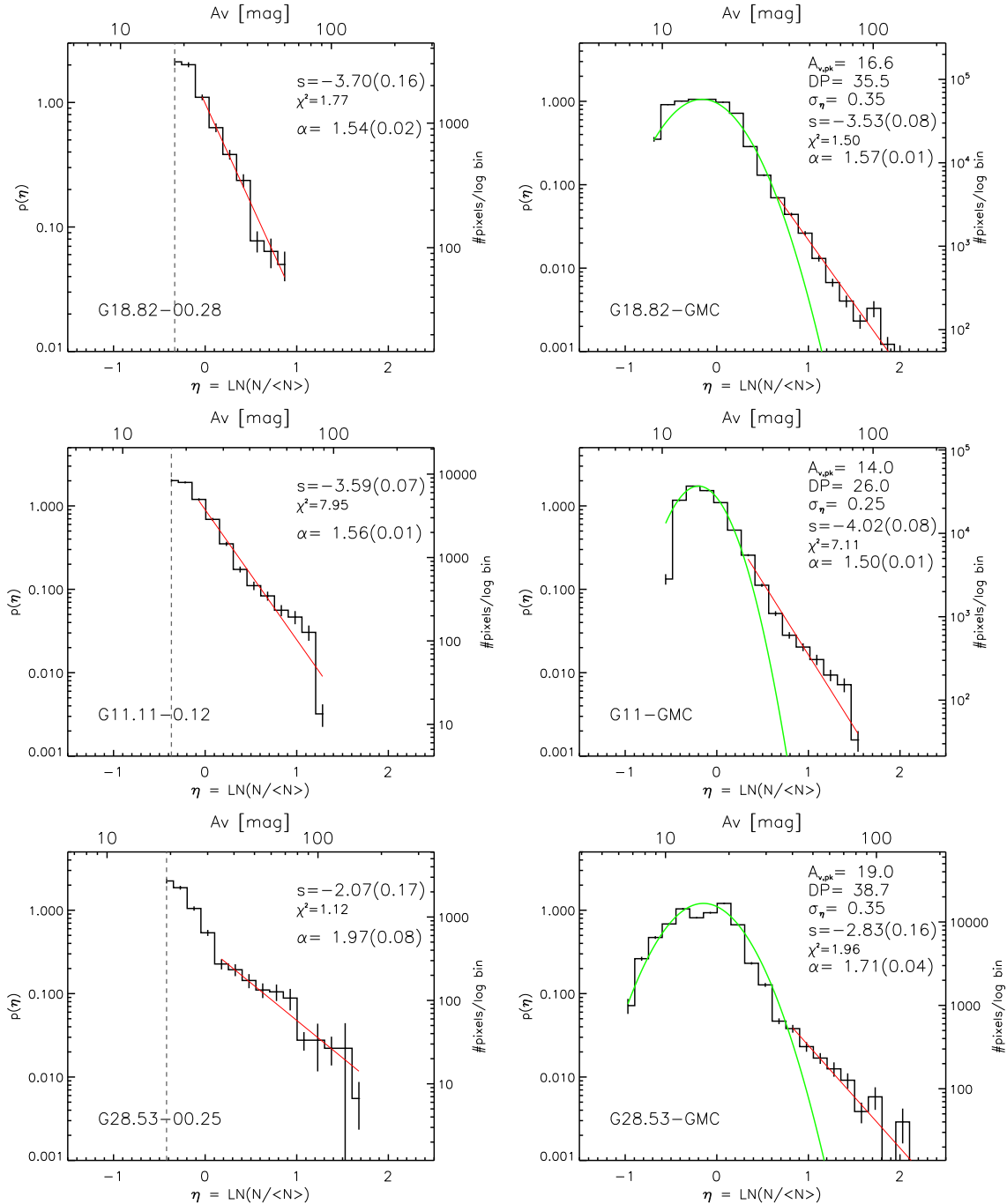


Fig. B.1. PDFs derived from *Herschel* column density maps (SED fit using only the *Herschel* wavelengths 160, 250, 350, and 500 μm) at 36'' angular resolution. *Left panel* shows the PDFs of pixels comprising only the IRDC i.e. G18.82-0.28 (Cloud A), G28.53-0.25 (Cloud D), and G11.11-0.12. *Right panel* shows PDFs from associated GMC, including the IRDC. The left *y*-axis gives the normalised probability $p(\eta)$, the right *y*-axis the number of pixels per log bin. The upper *x*-axis is the visual extinction and the lower *x*-axis the logarithm of the normalised column density. The dashed vertical line indicates the completeness level. The red line indicates a power-law fit to the high column density tail with the slope s together with its error and the reduced χ^2 goodness-of-fit. The exponent α of an equivalent spherical density distribution $\rho(r) \propto r^{-\alpha}$ is also indicated in the panel. The dashed line in the *upper panel* indicates the completeness level; the PDF left of this line is incomplete.

Appendix C: KS-test

To verify if the column density distribution (PDF) we observed for G28.37+0.07 possibly arises from a log-normal distribution, we performed a two-sample KS-test. We first generated synthetic functions following a log-normal distribution

$$p_{\eta} d\eta = \frac{1}{\sqrt{2\pi\sigma^2}} \exp\left[-\frac{(\eta - \mu)^2}{2\sigma^2}\right] d\eta, \quad (\text{C.1})$$

where σ is the dispersion i.e. the width of the distribution, η the mean logarithmic column density, and μ the peak (in units of η). To have a larger parameter space to compare, we varied σ between 0.2 and 1.7 (the latter is the width stated in KT).

For the normalisation, we performed two approaches. First, we fixed the peak of all synthetic distributions to the observed value. The x -axis value for this peak at $A_v \sim 19$ ($\mu = -0.23$) was extracted from the PDF of the whole GMCs that revealed a log-normal + power-law tail distribution (Fig. 6). Because these distributions have the same peak value but not a normalisation to the same number of pixels, we also produced a second set of functions that have this kind of a normalisation (but different peaks). Both sets of resulting synthetic distributions together with our observed set are shown in Fig. C.1.

Eye inspection already shows that the observed PDF is not consistent with any log-normal distribution, in particular not with one of a large width ($\sigma = 1.7$ was found in KT). To quantify this result, we list in Table C.1 the results of the two-sample KS-test, which gives the statistic and associated probability that two data sets are drawn from the same distribution. We performed the test using the IDL-routine “ksto.pro” with the algorithm taken from procedure of the same name in “Numerical Recipes” by Press et al. (1992). The parameter D gives the maximum deviation between the cumulative distribution of the observed PDF and the assumed underlying statistic (the log-normal in our case), while p shows the significance level of the KS-statistic. Small values of p , which is the case for our test, indicate that the pairwise distributions are significantly different. The p -values below 0.3 show that we can exclude the scenario that our distribution can be fit with a log-normal distribution by more than one sigma. Note that though the pixel statistic is low and the binning is large, the general properties (width, peak, slope of power-law tail) of the PDF do not depend on binning in smaller or larger bins or varying the pixel size or resolution (Schneider et al. 2015).

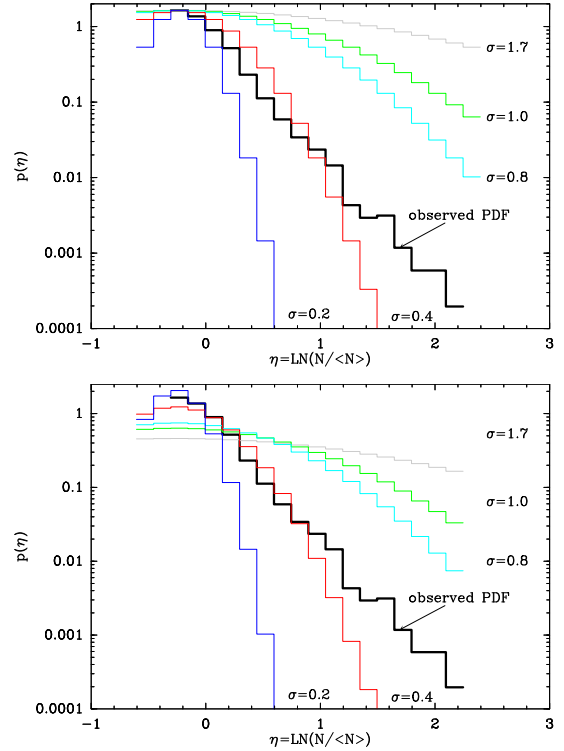


Fig. C.1. Synthetic distributions shown in various colours with different widths (indicated in the panel). The observed PDF for G28.37+0.07, constructed from *Herschel* data is indicated in bold black. *Top panel* shows distributions that are normalised to the peak; *bottom panel* shows distributions that are normalised to the same number of pixels.

Table C.1. Results of KS-test.

PDF width σ	D_{peak}	p_{peak}	D_{integral}	p_{integral}
0.2	0.600	8.7843e-04	0.5790	1.7733e-03
0.4	0.301	2.8865e-01	0.3158	2.4667e-01
0.8	0.382	8.7724e-02	0.3684	1.1612e-01
1.0	0.579	1.4968e-03	0.4737	1.8105e-02
1.7	0.789	2.2829e-06	0.63158	4.6629e-04

Notes. D and p are the parameters of the KS-test for the two normalisations (on-peak value or number of pixels) used to generate the synthetic distributions.

Appendix D: The ^{12}CO 3 \rightarrow 2 spectra of G11.11-0.12

Figure D.1 shows ^{12}CO 3 \rightarrow 2 spectra at the location of some of the continuum sources of the IRDC G11.11-0.12 (no ^{13}CO data are available) in the velocity range where the emission is associated with the cloud. Similar as seen for G28.37+0.07, the optically thick ^{12}CO line shows a self-absorbed dip close

to the velocity of the optically thin N_2H^+ line (indicated by a blue-dashed line). The velocity resolution of the CO data is only 1 km s^{-1} while that of N_2H^+ is 0.2 km s^{-1} so that resolution effects can play a role. The most straightforward explanation for the observed profile is infall, i.e. a line shape cause by the radial inwards motion of gas onto a central source.

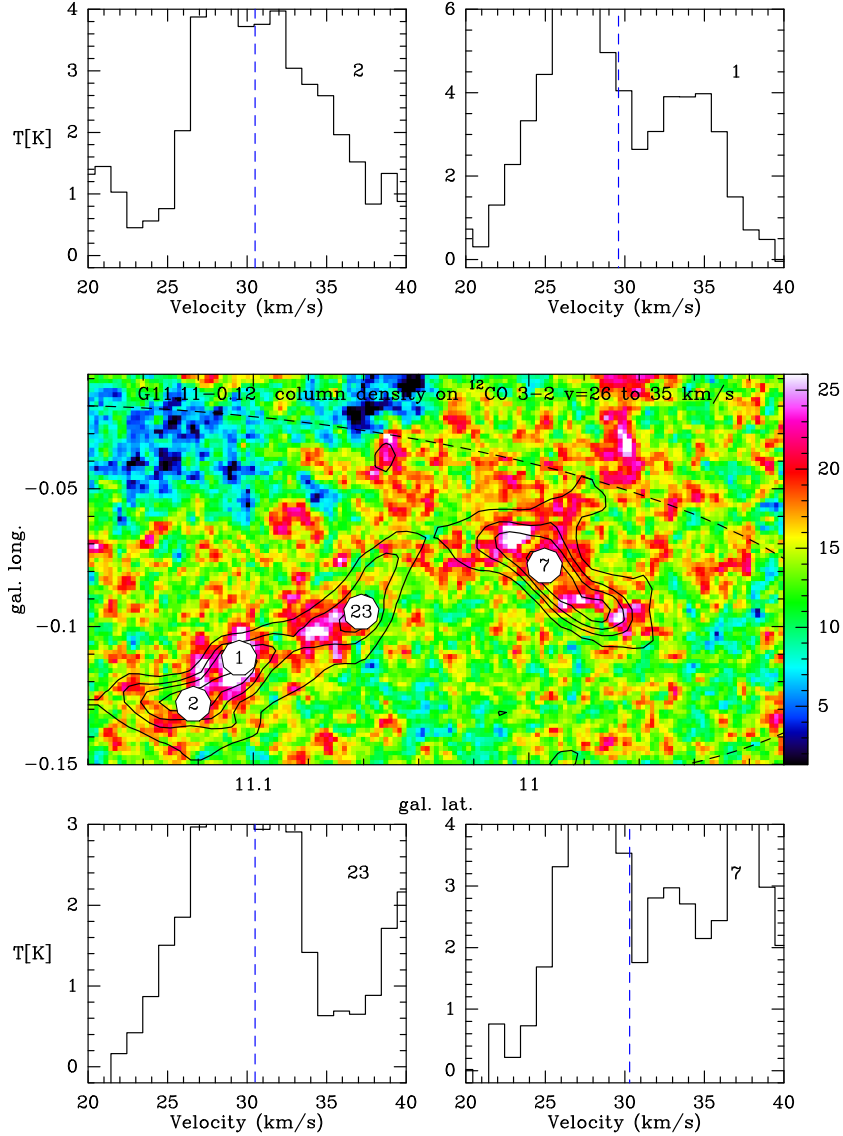


Fig. D.1. Middle panel: line integrated ^{12}CO 3 \rightarrow 2 emission (between 26 and 35 km s^{-1}) of G11-0.12. The dust column density from *Herschel* is overlaid as black contours (levels 3, 4, 5, 6 $\times 10^{22} \text{ cm}^{-2}$). The numbering from 1 to 4 indicates the position of submm-continuum sources detected with ATLASGAL and subsequently observed in N_2H^+ (Tackenberg et al. 2014). The ^{12}CO 3 \rightarrow 2 spectra at these positions are displayed in the panels. The blue-dashed line denotes the centre velocity of the N_2H^+ line.