



**HAL**  
open science

## Voiced speech enhancement based on adaptive filtering of selected intrinsic mode functions

Kais Khaldi, Monia Turki, Abdel-Ouahab Boudraa

► **To cite this version:**

Kais Khaldi, Monia Turki, Abdel-Ouahab Boudraa. Voiced speech enhancement based on adaptive filtering of selected intrinsic mode functions. *Advances in Adaptive Data Analysis*, 2010, 2 (1), pp.65-80. 10.1142/S1793536910000409 . hal-01087176

**HAL Id: hal-01087176**

**<https://hal.science/hal-01087176v1>**

Submitted on 25 Nov 2014

**HAL** is a multi-disciplinary open access archive for the deposit and dissemination of scientific research documents, whether they are published or not. The documents may come from teaching and research institutions in France or abroad, or from public or private research centers.

L'archive ouverte pluridisciplinaire **HAL**, est destinée au dépôt et à la diffusion de documents scientifiques de niveau recherche, publiés ou non, émanant des établissements d'enseignement et de recherche français ou étrangers, des laboratoires publics ou privés.



## Science Arts & Métiers (SAM)

is an open access repository that collects the work of Arts et Métiers ParisTech researchers and makes it freely available over the web where possible.

This is an author-deposited version published in: <http://sam.ensam.eu>  
Handle ID: <http://hdl.handle.net/10985/8987>

### To cite this version :

Kais KHALDI, Monia TURKI, Abdel-Ouahab BOUDRAA - Voiced speech enhancement based on adaptive filtering of selected intrinsic mode functions - Advances in Adaptive Data Analysis - Vol. 2, n°1, p.65-80 - 2010

Any correspondence concerning this service should be sent to the repository

Administrator : [archiveouverte@ensam.eu](mailto:archiveouverte@ensam.eu)

1  
3

5  
VOICED SPEECH ENHANCEMENT BASED ON  
ADAPTIVE FILTERING OF SELECTED  
INTRINSIC MODE FUNCTIONS

7  
KAIS KHALDI<sup>\*,†,‡</sup>, MONIA TURKI-HADJ ALOUANE<sup>†,§</sup>  
and ABDEL-OUAHAB BOUDRAA<sup>\*,¶</sup>

9  
*\*IRENav, Ecole Navale (EA 3634),  
BCRM Brest, CC 600, 29240 Brest, France*

11  
*†Unité Signaux et Systèmes,  
Ecole Nationale d'Ingénieurs de Tunis,  
BP 37, Le Belvédère 1002, Tunis, Tunisia*

13  
*‡kais.khaldi@gmail.com*

15  
*§m.turki@enit.rnu.tn*

*¶boudra@ecole-navale.fr*

17  
19  
21  
23  
25  
27  
29  
31  
33  
In this paper a new method for voiced speech enhancement combining the Empirical Mode Decomposition (EMD) and the Adaptive Center Weighted Average (ACWA) filter is introduced. Noisy signal is decomposed adaptively into intrinsic oscillatory components called Intrinsic Mode Functions (IMFs). Since voiced speech structure is mostly distributed on both medium and low frequencies, the shorter scale IMFs of the noisy signal are beneath noise, however the longer scale ones are less noisy. Therefore, the main idea of the proposed approach is to only filter the shorter scale IMFs, and to keep the longer scale ones unchanged. In fact, the filtering of longer scale IMFs will introduce distortion rather than reducing noise. The denoising method is applied to several voiced speech signals with different noise levels and the results are compared with wavelet approach, ACWA filter and EMD-ACWA (filtering of all IMFs using ACWA filter). Relying on exhaustive simulations, we show the efficiency of the proposed method for reducing noise and its superiority over other denoising methods, i.e., to improve Signal-to-Noise Ratio (SNR), and to offer better listening quality based on a Perceptual Evaluation of Speech Quality (PESQ). The present study is limited to signals corrupted by additive white Gaussian noise.

*Keywords:* Voiced speech enhancement; Empirical Mode Decomposition; ACWA filter.

35  
**1. Introduction**

The aim of noise reduction in speech is to lower the noise level without affecting the speech signal quality. In many speech communication applications, the

¶Corresponding author.

1 recorded and transmitted speech signals contain a considerable amount of acoustic  
background noise. Furthermore, with the growth of mobile communication appli-  
3 cations, the problem of reducing the background noise has become increasingly  
important. Different strategies have been proposed for noise reduction, such as  
5 Wiener filter [Proakis and Manolakis (1996)] or subspace filtering [Hermus *et al.*  
(2007)]. These linear methods have attracted significant interests and investigations  
7 due to their easy design and implementation. However, these approaches are not  
very effective when signals contain sharp shapes or impulses of short duration. To  
9 overcome these limits, nonlinear approaches, such as wavelet analysis, have been  
proposed [Donoho (1995)]. However, the fixed basis functions limit the performance  
11 of the wavelets over particular class of nonstationary signals. Recently, a new data-  
driven method, called Empirical Mode Decomposition (EMD), has been introduced  
13 by Huang *et al.* [1998] for analyzing nonlinear and nonstationary signals. The EMD  
decomposes adaptively a signal into intrinsic oscillatory components called Intrinsic  
15 Mode Functions (IMFs). The basis functions of EMD are derived from the signal  
itself and hence, the analysis is adaptive in contrast to traditional methods where  
17 the basis functions are fixed.

In this paper, a denoising scheme combining two adaptive methods and dedi-  
19 cated to voiced speech signals is proposed. The method is based on the EMD and the  
Adaptive Center Weighted Average (ACWA) filter [Lee (1980)] that both perform  
21 in time space. In our previous works [Khaldi *et al.* (2008a; 2008b)], the denois-  
ing method is based on the filtering of all IMFs extracted from the noisy signal.  
23 Since voiced speech signal energy is distributed over low and medium frequencies  
[Hermus *et al.* (2007)], the lower order of IMFs (high-frequency components) of  
25 the noisy signal is noise-contaminated [Weng *et al.* (2006); Boudraa and Cexus  
(2007)]. However, the longer scale IMFs (low- and medium-frequency components)  
27 corresponding to the most important structures of the signal are signal dominated.  
Therefore, filtering of these IMFs will introduce signal distortion rather than a  
29 noise reduction [Cexus (2006)]. The basic idea of the proposed method is to only  
filter the shorter scale IMFs (high-frequency components), which are noise domi-  
31 nated, and to keep the longer scale IMFs unchanged. This method is effective for  
voiced speech since the most important spectral features of voiced speech signal  
33 are distributed over medium and low frequencies [Hermus *et al.* (2007)]. Indeed,  
the power spectrum density of the voiced speech is very low for high frequencies.  
35 A criterion based on IMFs's energy is used to detect the shorter scale IMFs that  
contain much more noise than signal [Boudraa and Cexus (2007)]. These IMFs  
37 are filtered using ACWA filter [Lee (1980)], which operates adaptively in the time  
domain and does not require the stationarity and the whiteness of the signal. The  
39 proposed method is applied to voiced speech signals corrupted with additive white  
Gaussian noise. Comparisons with some denoising methods (ACWA filtering of all  
41 IMFs, wavelet denoising approach, and ACWA filtering of the noisy voiced signal)  
are performed.

1     **2. EMD Basics**

3     The EMD decomposes a given signal  $x(t)$  into a set of IMFs through an iterative  
4     process called *sifting*; each one with a distinct time scale [Huang *et al.* (1998)].  
5     The decomposition is based on the local time scale of  $x(t)$ , and yields adaptive  
6     basis functions. The EMD can be seen as a type of wavelet decomposition whose  
7     subbands are built up as needful to separate the different components of  $x(t)$ . Each  
8     IMF replaces the signal details, at a certain scale or frequency band [Flandrin *et al.*  
9     (2004)]. The EMD picks out the highest frequency oscillation that remains in  $x(t)$ .  
10    By definition, an IMF satisfies two conditions:

- 11    (1) The number of extrema and the number of zeros crossings may differ by no  
12       more than one.  
13    (2) The average value of the envelope defined by the local maxima, and the envelope  
14       defined by the local minima, is zero.

15    Thus, locally, each IMF contains lower frequency oscillations than the one  
16    extracted just before. The EMD does not use a pre-determined filter or basis func-  
17    tions, and it is a fully data-driven method [Huang *et al.* (1998)]. To be successfully  
18    decomposed into IMFs, the signal  $x(t)$  must have at least two extrema, one mini-  
19    mum and one maximum. The IMFs are extracted using an algorithm called sifting  
20    process summarized as follows [Huang *et al.* (1998)]:

- 21    • identify all extrema of  $x(t)$ ;
- 22    • interpolate between minima (resp. maxima), ending up with some envelope  
23        $e_{\min}(t)$  (resp.  $e_{\max}(t)$ );
- 24    • compute the average  $m(t)$   $[(e_{\min}(t) + e_{\max}(t))/2]$ ;
- 25    • extract the detail  $d(t)$   $[x(t) - m(t)]$ ; and
- 26    • iterate on the residual  $m(t)$ .

27    The signal  $d(t)$  is considered a true IMF, if it satisfies the conditions (1) and  
28    (2). The result of the sifting is that  $x(t)$  will be decomposed into a sum of  $C$  IMFs  
29    and a residual  $r_C(t)$  such as the following:

$$30 \qquad x(t) = \sum_{j=1}^C \text{IMF}_j(t) + r_C(t), \qquad (1)$$

31    where  $\text{IMF}_j(t)$  is the IMF of order  $j$  and,  $r_C(t)$  is the residual.

32     **3. Interest of ACWA Filter**

33    Classically, the ACWA filter has been used in image enhancement applications [Lee  
34    (1980); Russo (1996)]. It can be also interesting and effective in the context of audio  
35    signal enhancement. As shown by Eq. (2), the ACWA filter operates in the time  
36    domain. In contrast to the classical filters, such as Wiener filter, all the parameters

1 are computed in time domain and, hence, transformation to frequency domain is  
 2 not necessary. Besides, the noise variance is computed at all instants and the signal  
 3 is enhanced sample by sample. The ACWA filtered signal  $\tilde{x}(t)$  is described as follows  
 [Lee (1980)]:

$$5 \quad \tilde{x}(t) = \begin{cases} F_{\text{mean}} + K(y(t) - F_{\text{mean}}) & \text{if } F_{\text{var}} \geq \sigma^2 \\ F_{\text{mean}} & \text{otherwise,} \end{cases} \quad (2)$$

where

$$7 \quad K = 1 - \frac{\sigma^2}{F_{\text{var}}}, \quad (3)$$

8 where  $F_{\text{mean}}$  and  $F_{\text{var}}$  denote, respectively, the average and the variance of the  
 9 noisy signal  $y(t)$  computed over a sliding window of size  $L$ , and  $\sigma^2$  designates  
 the variance of noise contained in the noisy signal  $y(t)$ . In order to show the  
 11 effectiveness of this filter in the audio context, a comparative analysis between  
 ACWA filter and Minimum Mean Square Error (MMSE) filter [Soon *et al.* (1998)]  
 13 is presented.

14 In this work we consider the enhancement of speech sequences corrupted by  
 15 additive white Gaussian noise. The noise level is fixed through the input Signal-to-  
 Noise Ratio ( $\text{SNR}_{\text{in}}$ ) to 2 dB. Figure 1 shows the superposition of the clean signal  
 17 and the filtered signals obtained by the ACWA and the MMSE filters.

18 The comparative analysis of the three signals (Fig. 1) does not clearly show  
 19 the superiority of the ACWA filter over the MMSE one. Therefore, we use the  
 output SNR ( $\text{SNR}_{\text{out}}$ ) and the Perceptual Evaluation of Speech Quality (PESQ)

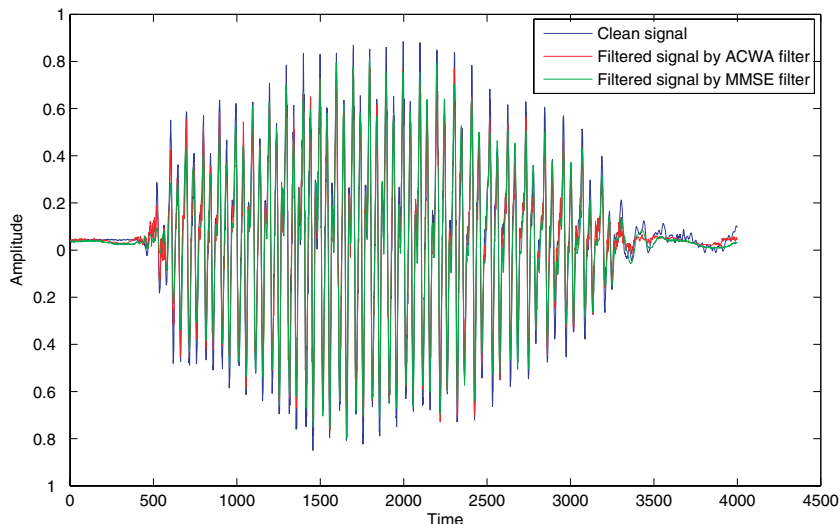


Fig. 1. Clean and filtered signals by the ACWA and the MMSE filters ( $\text{SNR}_{\text{in}} = 2$  dB).

Table 1. Variations of the  $\text{SNR}_{\text{out}}$  and the PESQ over the  $\text{SNR}_{\text{in}}$ ; relating to MMSE filter and the ACWA filter.

SNR input [dB]	MMSE filter		ACWA filter	
	SNR output [dB]	PESQ	SNR output [dB]	PESQ
-10	0.7	0.70	1.2	1.51
-8	1.53	0.91	2.01	1.72
-6	3.52	1.07	5.94	1.98
-4	5.00	1.2	7.98	2.07
-2	7.37	1.51	10.18	2.15
0	9.82	2.05	11.19	2.21
2	12.63	2.13	12.08	2.35
4	13.76	2.25	13.95	2.41
6	15.88	2.49	15.67	2.65
8	16.53	2.64	16.52	2.75
10	17.23	2.73	17.18	2.82

1 [Rix *et al.* (2001); ITU-T P.835 (2003)] criteria to quantify the speech enhancement  
 3 quality obtained by the two filters. Table 1 presents the obtained results for different  
 5 levels of the additive noise fixed through the  $\text{SNR}_{\text{in}}$ . These results show that for  
 7 very low  $\text{SNR}_{\text{in}}$  values, the ACWA filter gives higher  $\text{SNR}_{\text{out}}$  than the MMSE filter.  
 However, for all considered  $\text{SNR}_{\text{in}}$  values, the PESQ values given by the MMSE filter  
 are higher than those related to the ACWA filter. The PESQ results confirm that  
 the ACWA filter guarantees better listening quality of the enhanced speech than  
 the MMSE filter.

#### 9 4. Proposed Voiced Speech Denoising Approach

The proposed denoising method is illustrated by the scheme shown in Fig. 2. The  
 11 noisy signal  $y(t)$  is given by:

$$y(t) = x(t) + b(t), \quad (4)$$

13 where  $x(t)$  corresponds to the clean voiced speech signal and  $b(t)$  denotes an additive  
 15 white Gaussian noise. The noisy signal is decomposed into a sum of IMFs by the  
 EMD, such as:

$$y(t) = \sum_{j=1}^C \text{IMF}_j(t) + r_C(t). \quad (5)$$

17 The denoising method consists in filtering by the ACWA filter a set of IMFs selected  
 using an energy criterion [Boudraa and Cexus (2007)].

##### 19 4.1. *IMFs selection*

21 The EMD filtering method relies on the basic idea that most important structures  
 of the signal, such as voiced speech signal, are concentrated on medium and low

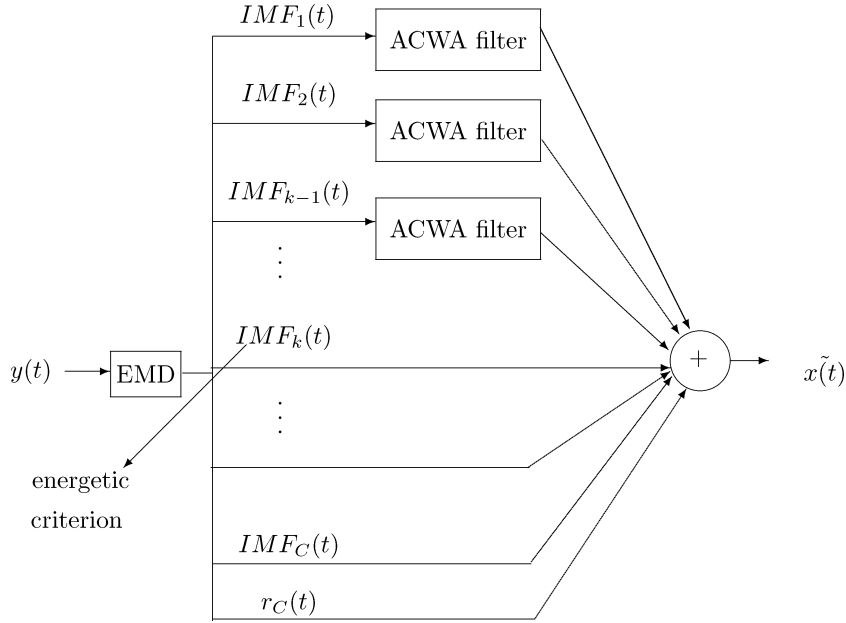


Fig. 2. Scheme of the proposed denoising approach.

1 frequencies, that correspond to longer scale IMFs [Weng *et al.* (2006); Flandrin  
 2 *et al.* (2005)]. Therefore, the shorter scale IMFs of the noisy version are noise  
 3 dominated, while the longer scale ones are signal dominated and their filtering can  
 4 induce distortion of the reconstructed signal. According to this idea, there will be a  
 5 mode, indexed by  $j_s$ , from which the energy distribution of the important structures  
 6 of the signal overcomes that of the noise [Boudraa and Cexus (2007)]. Thus, a  
 7 criterion based on energy density can be used [Wu and Huang (2004); Flandrin  
*et al.* (2005)].

From the observed signal  $y(t)$ , the objective is to find an approximation  $\tilde{x}(t)$  to  
 the original signal  $x(t)$  that minimizes the Mean Square Error (MSE):

$$\text{MSE}(x, \tilde{x}) \triangleq \frac{1}{N} \sum_{i=1}^N (x(t_i) - \tilde{x}(t_i))^2, \quad (6)$$

9 where  $x = [x(t_1), x(t_2), \dots, x(t_N)]^T$  and  $\tilde{x} = [\tilde{x}(t_1), \tilde{x}(t_2), \dots, \tilde{x}(t_N)]^T$ .  $N$  is the  
 length of the signal. Other distortion measures such as the Mean Absolute Error  
 11 (MAE) can be used. Then,  $y(t)$  is first decomposed using the EMD into  $\text{IMF}_j(t)$ ,  $j =$   
 $1, \dots, C$ , and a residual  $r_C(t)$ , and finally  $\tilde{x}(t)$  is reconstructed using  $(C - k + 1)$   
 13 selected IMFs starting from  $k$  to  $C$  (Eq. (7)).

$$\tilde{x}_k(t) = \sum_{j=k}^C \text{IMF}_j(t) + r_C(t), k = 2, \dots, C. \quad (7)$$



The aim of the EMD filtering, which is carried out on time domain, is to find the index  $k = j_s$  that minimizes the  $MSE(x, \tilde{x})$ . Note that Eq. (7) corresponds to a low-pass time-space filtering [Huang *et al.* (2006)]. In practice the MSE or the MAE cannot be calculated because the original signal  $x(t)$  is unknown. In this paper we use a distortion measure called Consecutive MSE (CMSE) that does not require the knowledge of  $x(t)$  [Boudraa and Cexus (2007)]. This quantity measures the squared Euclidean distance between two consecutive reconstructions of the signal. The CMSE is defined as follows [Boudraa and Cexus (2007)]:

$$CMSE(\tilde{x}_k, \tilde{x}_{k+1}) \triangleq \frac{1}{N} \sum_{i=1}^N (\tilde{x}_k(t_i) - \tilde{x}_{k+1}(t_i))^2, \quad k = 1, \dots, C-1, \quad (8)$$

$$\triangleq \frac{1}{N} \sum_{i=1}^N (IMF_k(t_i))^2. \quad (9)$$

1 Thus, according to Eq. (9) the CMSE is reduced to the energy of the  $k^{th}$  IMF.  
 2 It is also the classical empirical variance estimate of the IMF. Remark if  $k = 1$ ,  
 3  $\tilde{x}_k(t) = y(t)$ . Finally, the index  $j_s$  is given by:

$$j_s = \underset{1 \leq k \leq C-1}{\operatorname{argmax}} [CMSE(\tilde{x}_k, \tilde{x}_{k+1})], \quad (10)$$

5 where  $\tilde{x}_k$  and  $\tilde{x}_{k+1}$  are signals reconstructed starting from the IMFs indexed by  
 6  $k$  and  $(k+1)$ , respectively. The CMSE criterion allows to identify the IMF order  
 7 where there is the first significant change in energy. This empirical fact is derived  
 8 from extensive experiments and simulations [Boudraa and Cexus (2007)]. Once the  
 9 index  $j_s$  is calculated, the IMFs of order  $j < j_s$  are filtered and those of order  $j \geq j_s$   
 are not processed.

## 11 4.2. ACWA filtering

12 The shorter scale  $(j_s - 1)$  IMFs, which are hidden beneath noise, are filtered by the  
 13 ACWA filter performing in the time space. In fact, each  $IMF_j(t)$  of order  $(j < j_s)$   
 is assumed to be a noisy version of the data  $f_j(t)$ . So it can be expressed as:

$$15 \quad IMF_j(t) = f_j(t) + b_j(t). \quad (11)$$

An estimate  $\tilde{f}_j(t)$  of  $f_j(t)$  is given by:

$$17 \quad \tilde{f}_j(t) = \Gamma[IMF_j(t)], \quad (12)$$

18 where  $\Gamma[IMF_j(t)]$  is a temporal processing [Boudraa and Cexus (2007)] correspond-  
 19 ing in this case to ACWA filter. The noise level  $\tilde{\sigma}_j$  of  $IMF_j$  can be computed as  
 follows [Teukolsky *et al.* (1992); Boudraa and Cexus (2006)]:

$$21 \quad \tilde{\sigma}_j = 1.4826 \times \operatorname{Median}\{|IMF_j(t) - \operatorname{Median}\{IMF_j(t)\}|\}. \quad (13)$$

1 The proposed denoising approach is described in four steps as follows:

**Input:** Noisy voiced speech:  $y(t)$ .

3 **Output:** Denoised voiced speech:  $\tilde{x}(t)$ .

**Initialization:**

5  $h(t) \leftarrow y(t)$

7 **Step A:** Decompose  $y(t)$ , by EMD, into  $j$  IMFs,  $j \in \{1, \dots, C\}$ , and the residual  $r_C(t)$ .

**Step B:** Calculate the energy of each IMFs, and find the index  $j_s$  using Eq. (10).

9 **Step C:** Denoising the shorter scale ( $j_s - 1$ ) IMFs using relations (3) and (4).

**Step D:** The denoised signal,  $\tilde{x}(t)$ , is reconstructed as follows:

$$11 \quad \tilde{x}(t) = \sum_{j=1}^{j_s-1} \tilde{f}_j(t) + \sum_{j=j_s}^C \text{IMF}_j(t) + r_C(t). \quad (14)$$

## 5. Results

13 The proposed noise reduction method is tested on voiced speech signals corrupted  
15 by varying additive white Gaussian noise levels, fixed through the  $\text{SNR}_{\text{in}}$ . Four  
clean voiced speech signals vowels /o/, /a/, /e/ and /i/ (Fig. 3) pronounced by a  
male speaker are analyzed.

17 These signals are corrupted by an additive white Gaussian noise with SNR values  
ranging from  $-10$  dB to  $10$  dB. The results of the proposed scheme are compared

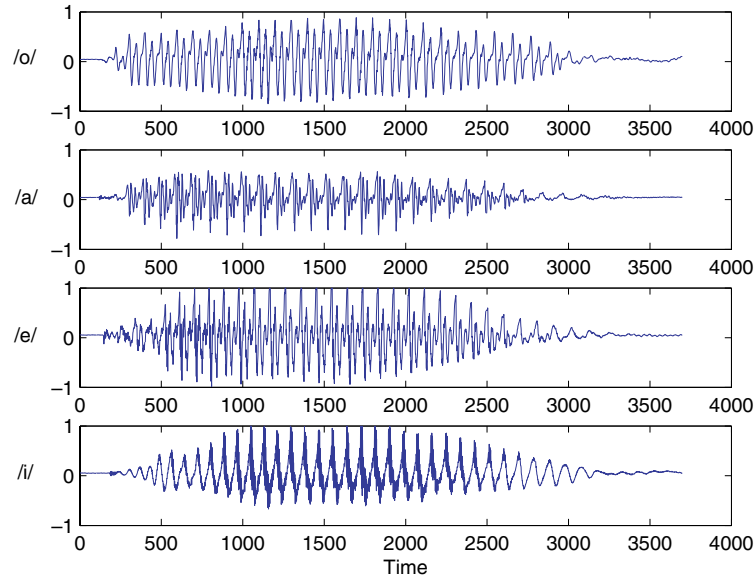


Fig. 3. Original signals /o/, /a/, /e/ and /i/.

1 with those of three methods: ACWA filtering of all IMF's (EMD-ACWA), denoising  
 3 based on wavelet decomposition [Khaldi *et al.* (2008a;2008b)], and ACWA filtering  
 5 of the noisy voiced signal. The performance evaluation is based on the  $\text{SNR}_{\text{out}}$   
 7 and the PESQ measures. For each  $\text{SNR}_{\text{in}}$  value, 100 independent noise realizations  
 are generated and averaged values of the  $\text{SNR}_{\text{out}}$  and the PESQ are computed.  
 Noisy versions of the original signals corresponding to  $\text{SNR}_{\text{in}} = 2$  dB are shown  
 in Fig. 4.

9 For illustration, Fig. 5 shows that the EMD decomposes the noisy signal /o/  
 into ten IMF's and a residual. According to this decomposition, we can see that  
 11 from the fourth IMF, the original signal components are more dominant than the  
 noise components. This finding is well verified based on CMSE criterion.

Indeed, Fig. 6 shows that for the sequence /o/, the maximum of CMSE points  
 13 out at the fourth IMF. Figure 6 shows the plots of the CMSE values *versus*  
 the number of IMF's for the four signals. Each curve is characterized by only one  
 15 maximum corresponding to the index  $j_s$ . Table 2 summarizes for each signal,  
 the number of IMF's given by the EMD decomposition; and the index  $j_s$  corresponding  
 17 to the largest CMSE or IMF energy. The second stage of the proposed method  
 consists in filtering the  $(j_s - 1)$  shorter scale IMF's using the ACWA filter. The  
 19 size,  $L$ , of the sliding window of ACWA filter is set to 511. Such setting is  
 justified by the results shown in Fig. 7 where are displayed the variations of the  
 21  $\text{SNR}_{\text{out}}$  *versus* the  $L$  values.

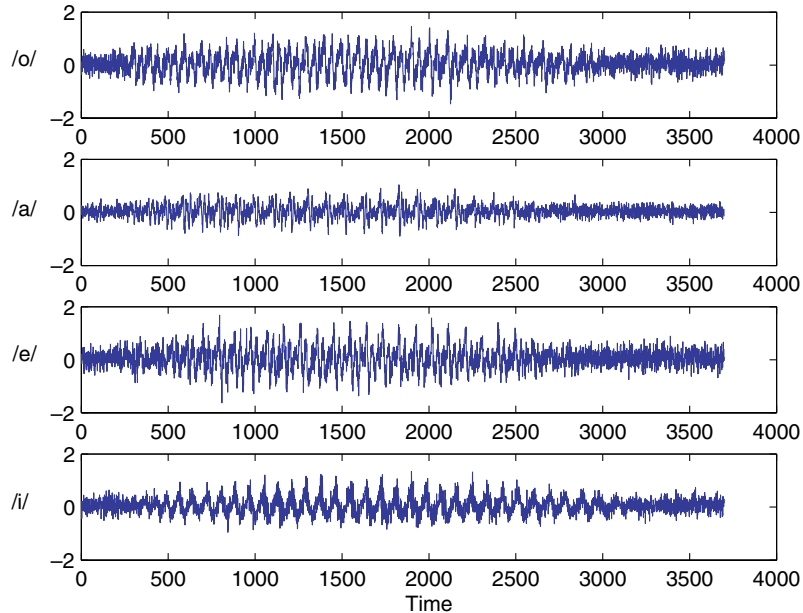


Fig. 4. Noisy versions of signals /o/, /a/, /e/ and /i/ ( $\text{SNR}_{\text{in}} = 2$  dB).

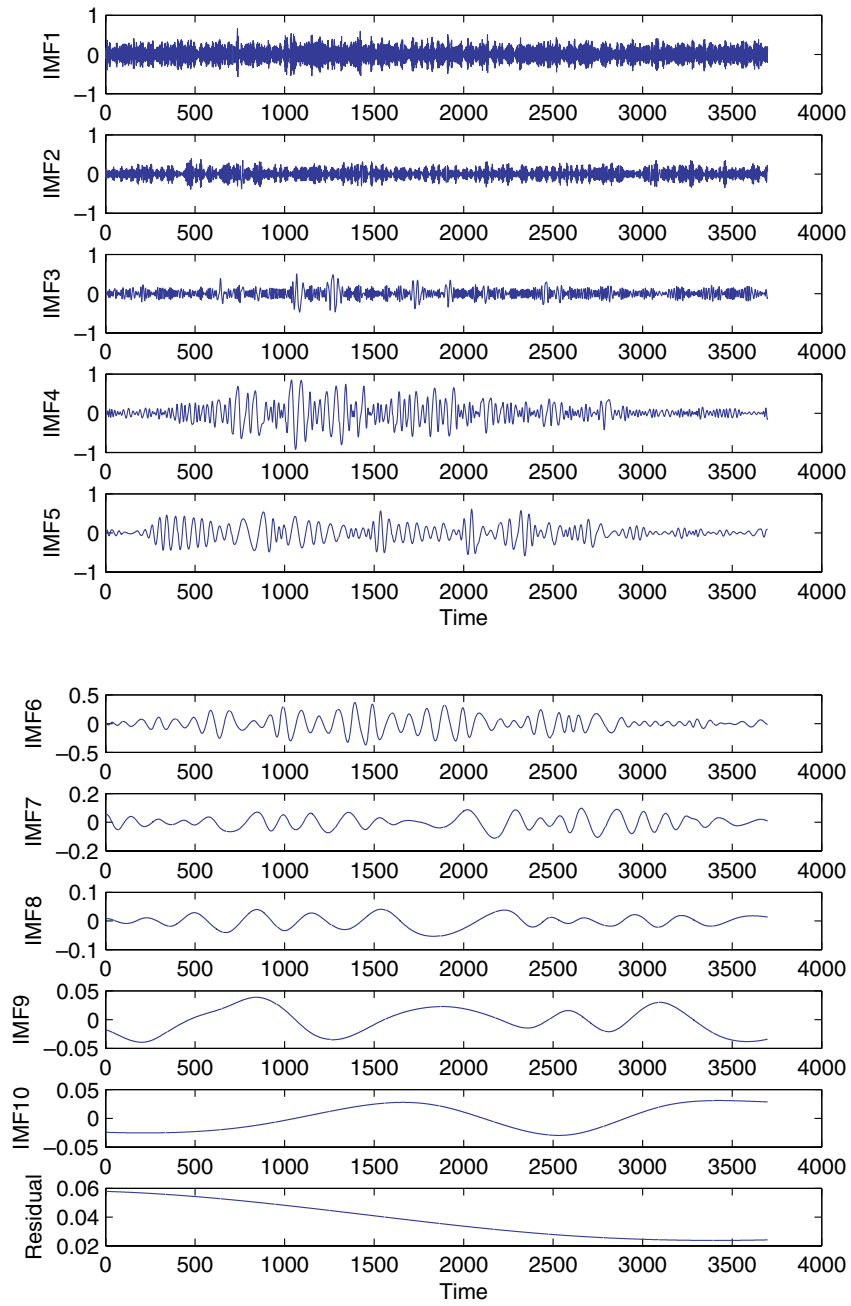


Fig. 5. Decomposition of noisy signal /o/ by EMD ( $\text{SNR}_{\text{in}} = 2 \text{ dB}$ ).

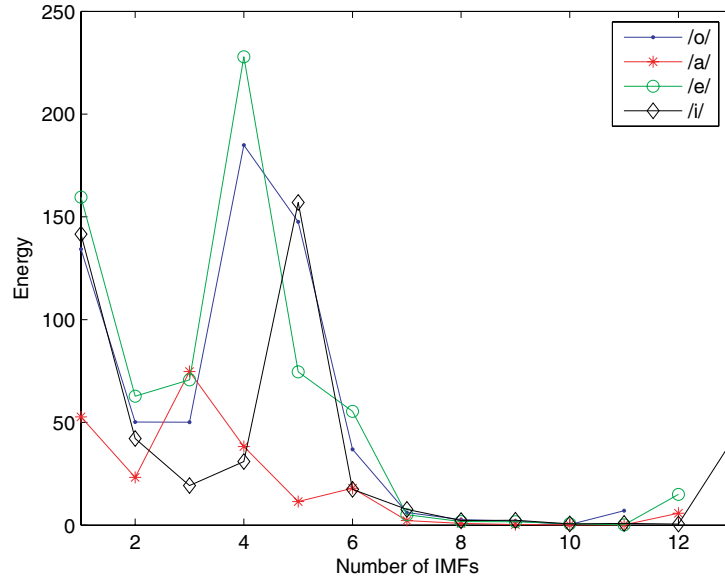


Fig. 6. Variations of CMSE (energy) values *versus* the number of IMFs for the four noisy signals.

Table 2.  $C$  and  $j_s$  values of each signal.

Signals	/o/	/a/	/e/	/i/
$C$	10	11	11	12
$j_s$	4	3	4	5

1 Figure 7 shows that for the three considered values of  $\text{SNR}_{\text{in}}$ , the  $\text{SNR}_{\text{out}}$  remains  
almost constant for  $L \geq 511$ .

3 Denoising results obtained by the proposed method, the ACWA filtering of  
the noisy signal, the ACWA filtering of the all IMFs of the noisy signal (EMD–  
5 ACWA), and a denoising based on the wavelet (db8) thresholding [Khaldi *et al.*  
(2008a;2008b)], are shown in Fig. 8 for an  $\text{SNR}_{\text{in}} = 2$  dB. In fact, we choose db8 with  
7 a hard threshold as a tool of comparison, because it gives good results compared  
to the other wavelets. A careful comparative examination of the signals, as shown  
9 in Figs. 3 and 8, shows that the proposed method performs better than the other  
three methods in terms of noise reduction.

11 This conclusion is confirmed by the  $\text{SNR}_{\text{out}}$  values listed in Table 3. For all voiced  
speech signals the SNR gain achieved by the proposed method is the highest.

13 These findings are confirmed by the results shown in Fig. 9. It is shown that for  
the four signals the proposed method performs remarkably better than the EMD–  
15 ACWA and the other methods. The SNR improvement achieved by the proposed  
method varies from 3.4 dB to 17.9 dB. For very lower  $\text{SNR}_{\text{in}}$  values, we still observe

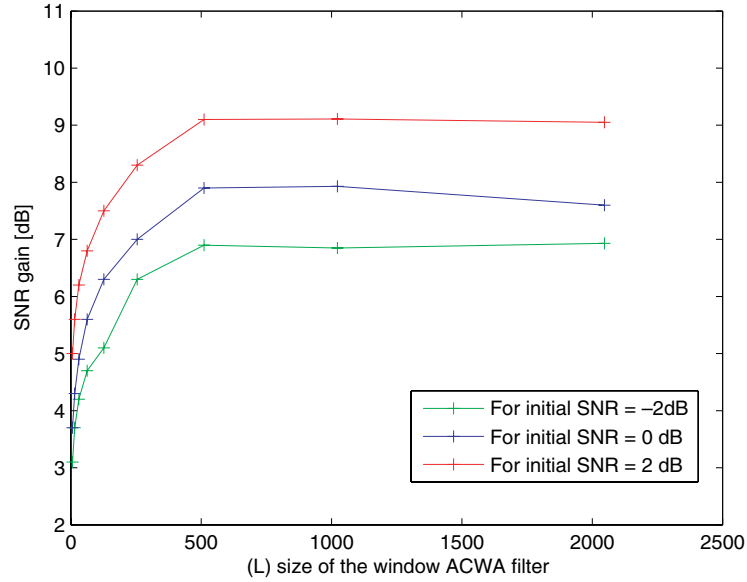


Fig. 7. Variations of SNR<sub>out</sub> values versus  $L$  (SNR<sub>in</sub> = -2 dB, 0 dB and 2 dB).

1 the effectiveness of the proposed method in removing the noise components. Indeed,  
 2 the SNR improvement is all the more high since the SNR<sub>in</sub> is low.

3 When listening to the enhanced speech signals, the proposed method pro-  
 4 duces lower residual noise and noticeably less speech distortion for all the sig-  
 5 nals. This result is confirmed by the PESQ results shown in Fig. 10. These results

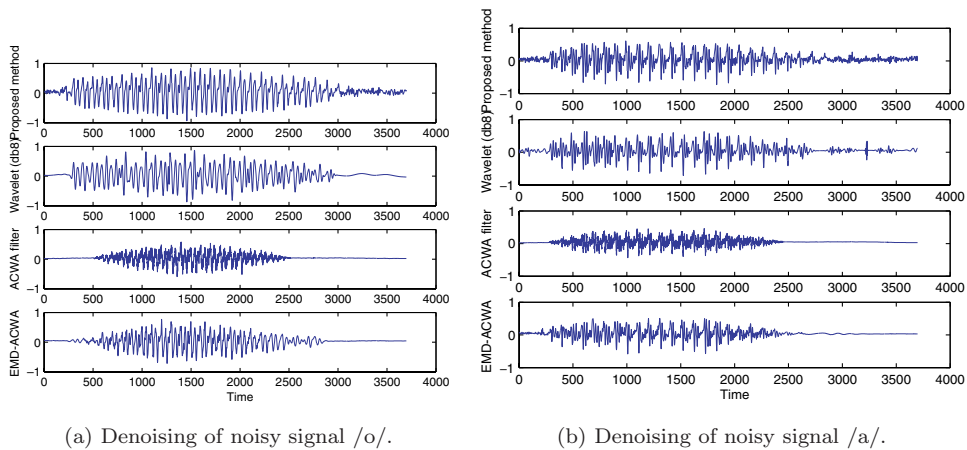
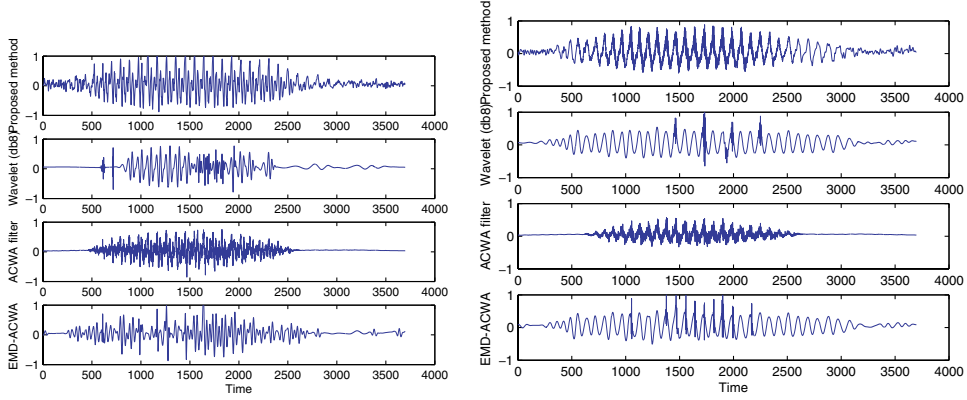


Fig. 8. Enhanced signals obtained by the proposed method, Wavelet (db8), ACWA filter, and EMD-ACWA (SNR<sub>in</sub> = 2 dB).



(c) Denoising of noisy signal /e/.

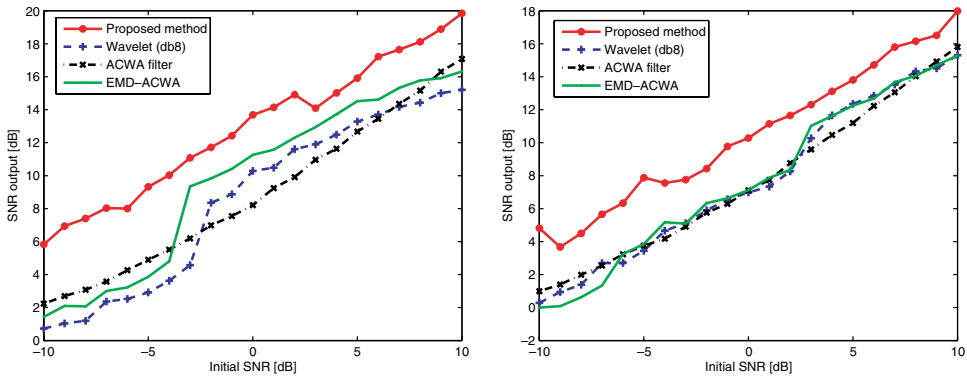
(d) Denoising of noisy signal /i/.

Fig. 8. (Continued)

Table 3. Denoising results, based on the  $\text{SNR}_{\text{out}}$ , of four noisy voiced different signals ( $\text{SNR}_{\text{in}} = 2 \text{ dB}$ ).

Noisy signals ( $\text{SNR} = 2 \text{ dB}$ )	/o/	/a/	/e/	/i/
Proposed method	14.82	11.87	10.55	9.44
EMD-ACWA	11.94	7.87	7.41	5.23
Wavelet (db8)	11.38	7.85	7.40	5.24
ACWA filter	9.80	8.04	7.91	7.31

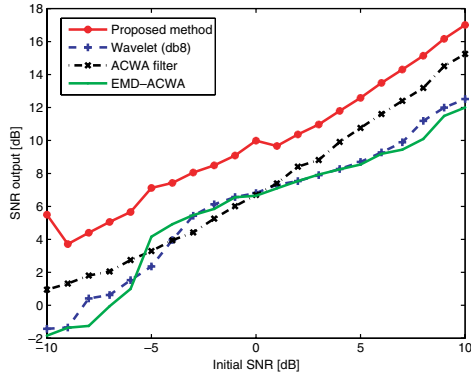
1 demonstrate that our approach gives a significant enhancement in listening quality  
 2 as the improvement of the PESQ values is high. Indeed, the obtained results also  
 3 show that it is more efficient to apply the ACWA filter to selected IMFs of the  
 noisy signal than to the all IMFS.



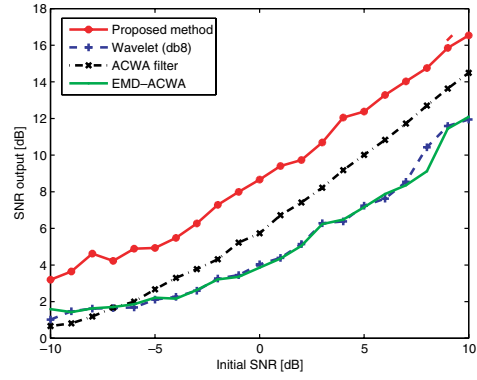
(a) Gain in SNR for noisy version of /o/.

(b) Gain in SNR for noisy version of /a/.

Fig. 9. Variations of  $\text{SNR}_{\text{out}}$  versus  $\text{SNR}_{\text{in}}$  for signals /o/, /a/, /e/, and /i/. The results are the average of 100 noise realizations. The reported results correspond to proposed method, Wavelet (db8), ACWA filter, and the EMD-ACWA.

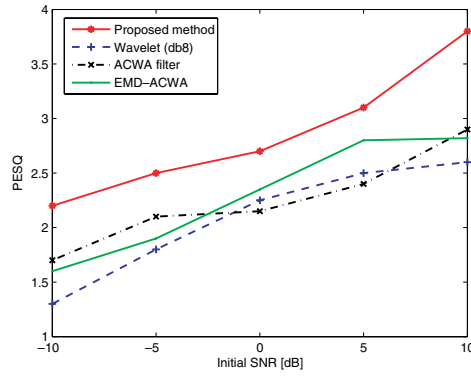


(c) Gain in SNR for noisy version of /e/.

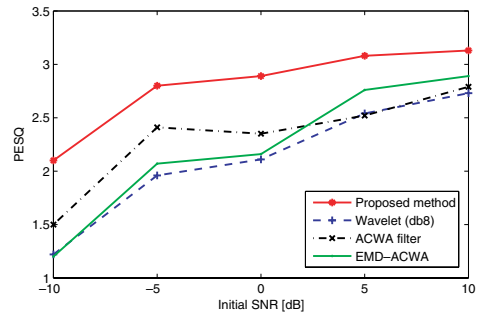


(d) Gain in SNR for noisy version of /i/.

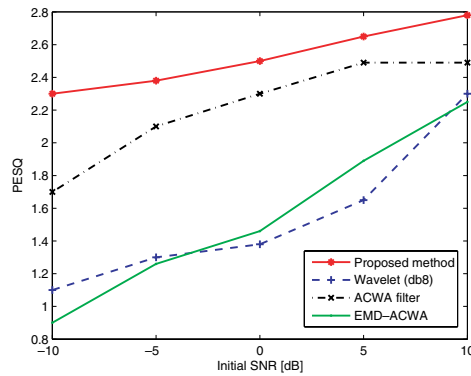
Fig. 9. (Continued)



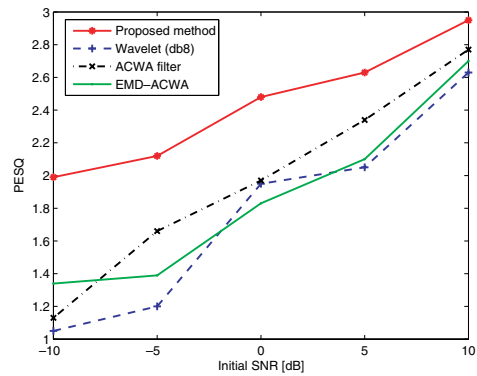
(a) PESQ for noisy version of /o/.



(b) PESQ for noisy version of /a/.



(c) PESQ for noisy version of /e/.



(d) PESQ for noisy version of /i/.

Fig. 10. Variations of PESQ values *versus*  $\text{SNR}_{\text{in}}$  for the signals /o/, /a/, /e/, and /i/. The results are the average of 100 noise realizations. The reported results correspond to proposed method, Wavelet (db8), ACWA filter, and the EMD-ACWA.



## 1      6. Conclusion

3      In this paper, a new voiced speech enhancement method is presented. To lower the  
4      noise level, two effective and powerful methods, pre-filtering by EMD and ACWA  
5      filtering, are combined. Obtained results for denoising voiced speech signals with  
6      different SNR values ranging from  $-10$  dB to  $10$  dB show that the SNR improvement  
7      achieved by the proposed method is higher than those achieved by the wavelet  
8      approach, the ACWA filter, and the EMD-ACWA method. In addition, the PESQ  
9      criterion confirms that the proposed method offers a much better listening quality  
10     than the other methods.

## 11     Acknowledgments

12     This work is partially supported by grants from CMCU (Comité Mixte de  
13     Coopération Universitaire Franco-Tunisienne).

## 14     Appendices

15     In this appendix, we give brief descriptions of the quality measures used. **Input**  
16     **Signal-to-Noise Ratio (SNR<sub>in</sub>):** The input Signal to Noise Ratio (SNR<sub>in</sub>) is  
17     given by:

$$17 \quad \text{SNR}_{\text{in}} = 10 \log_{10} \frac{\sum_{t=1}^T (x(t))^2}{\sum_{t=1}^T (y(t) - x(t))^2}, \quad (\text{A.1})$$

18     where  $x$  and  $y$  are, respectively, the clean and the noisy signals.

19     **Output Signal-to-Noise Ratio (SNR<sub>out</sub>):** The SNR<sub>out</sub> is very sensitive to the  
20     time alignment of the original and distorted signals. The SNR<sub>out</sub> is measured as:

$$21 \quad \text{SNR}_{\text{out}} = 10 \log_{10} \frac{\sum_{t=1}^T (\tilde{x}(t))^2}{\sum_{t=1}^T (x(t) - \tilde{x}(t))^2}, \quad (\text{A.2})$$

22     where  $\tilde{x}$  is the reconstructed signal.

23     **Perceptual Evaluation of Speech Quality (PESQ):** The PESQ measure is  
24     the most complex to compute, and it is recommended by ITU-T for speech quality  
25     assessment of 3.2 kHz (narrow-band) handset telephony and narrow-band speech  
26     codec [ITU-T P.835 (2003)]. The note refers PESQ values type MOS, in the form  
27     of a scalar between  $-0.5$  and  $4.5$ .

## References

- 28     Boudraa, A. O. and Cexus, J. C. (2006). Denoising via empirical mode decomposition.  
29     *Proc. IEEE ISCCSP*, 1-4.
- 30     Boudraa, A. O. Cexus, J. C. and Saidi, Z. (2004). EMD-based signal noise reduction. *Int.*  
31     *J. Signal Process.* **1**, 1: 33-37.
- 32     Boudraa, A. O. and Cexus, J. C. (2007). EMD-based signal filtering. *IEEE Trans. Instrum.*  
33     *Meas.*, **56**, 6: 2196-2202.

- 1 Cexus, J. C. (2006). Analyse des signaux non-stationnaires par Transformation de Huang,  
2 Operation de Teager–Kaiser, et Transformation de Huang–Teager (THT). *PhD Thesis*,  
3 *University of Rennes I*.
- 4 Deger, E., Islam Molla, K., Hirose, K., Minemastu, N. and Hasan, K. (2007). Speech  
5 enhancement using soft thresholding with DCT-EMD based hybrid algorithm. *Proc.*  
6 *EUSIPCO*, 1–5.
- 7 Donoho, D. L. (1995). De-noising by soft-thresholding. *IEEE Trans. Inform. Theory*, **41**:  
8 613–627.
- 9 Flandrin, P. Goncalves, P. and Rilling, R. (2005). EMD equivalent filter banks, from  
10 interpretation to applications. *Hilbert–Huang Transform and Its Applications*, 57–73,  
11 ed. N. E. Huang and S. S. P. Shen, World Scientific.
- 12 Flandrin, P., Rilling, G. and Goncalves, P. (2004). Empirical mode decomposition as a  
13 filter bank. *IEEE Signal Proc. Lett.*, **11**, 2: 112–114.
- 14 Hermus, K., Wambacq, P. and Van Hamme, H. (2007). A review of signal subspace speech  
15 enhancement and its application to noise robust speech recognition. *EURASIP J. Adv.*  
16 *Signal Process.*, **2007**: 1–15.
- 17 Huang, N. E., Brenner, M. J. and Salvino, L. (2006). Hilbert–Huang transform stability  
18 spectral analysis applied to flutter flight test data. *AIAA J.*, **44**, 4: 772–786.
- 19 Huang *et al.* (1998). The empirical mode decomposition and Hilbert spectrum for nonlinear  
20 and non-stationary time series analysis. *Proc. Roy. Soc.*, **454**: 903–995.
- 21 ITU-T P.835. (2003). Subjective test methodology for evaluating speech communication  
22 systems that include noise suppression algorithm, *ITU-T Recommendation*.
- 23 Khaldi, K., Boudraa, A. O., Bouchikhi, A., Turki-Hadj Alouane, M. and Diop, E. H. S.  
24 (2008a). Speech signal noise reduction by EMD. *Proc. IEEE ISCCSP*, 1–4.
- 25 Khaldi, K., Boudraa, A. O., Bouchikhi, A. and Turki-Hadj Alouane, M. (2008b). Speech  
26 Enhancement via EMD. *EURASIP J. Adv. Signal Process.*, **2008**: 1–8.
- 27 Lee, J. S. (1980). Digital image enhancement and noise filtering by using local statistics.  
28 *Pattern Anal. Mach. Intell.*, **2**, 4: 165–168.
- 29 Proakis, J. G. and Manolakis, D. G. (1996). *Digital Signal Processing: Principles, Algo-*  
30 *ritms, and Applications*, 3rd edn. Prentice-Hall.
- 31 Rix, A., Beerends, J., Hollier, M. and Hekstra, A. (2001). Perceptual evaluation of speech  
32 quality (PESQ) — A new method for speech quality assessment of telephone networks  
33 and codecs. *Proc. IEEE ICASSP*, **4**: 749–752.
- 34 Russo, F. (1996). Nonlinear fuzzy filters: An overview. *Proc. EUSIPCO*, 257–260.
- 35 Soon, I. Y., Koh, S. N. and Yeo, C. K. (1998). Noisy speech enhancement using discrete  
36 cosine transform. *Speech Commun.*, **24**, 3: 249–257.
- 37 Teukolsky, S. A., Vetterling, W. T. and Flannery, B. P. (1992). *Numerical Recipes in C:*  
38 *The Art of Scientific Computing*, 2nd edn. W.H. Press.
- 39 Weng, B., Blanco-Velasco, M. and Barner, K. E. (2006). ECG Denoising based on the  
40 Empirical Mode Decomposition. *Proc. IEEE EMBS*, 1–4.
- 41 Wu, Z. and Huang, N. E. (2004). A study of the characteristics of white noise using the  
42 empirical mode decomposition method. *Proc. Roy. Soc. Lond. Ser. A*, **460**: 1579–1611.
- 43 Wu, Z. and Huang, N. E. (2005). Statistical significance test of intrinsic mode func-  
44 tions in *Hilbert–Huang Transform and Its Applications*, 103–147, ed. N. E. Huang and  
45 S. S. P. Shen, World Scientific.