



HAL
open science

Modeling partial nitrification and denitrification in a hybrid biofilm reactor: calibration by retention time distribution and respirometric tests

Ming Zeng, Audrey Soric, Nicolas Roche

► To cite this version:

Ming Zeng, Audrey Soric, Nicolas Roche. Modeling partial nitrification and denitrification in a hybrid biofilm reactor: calibration by retention time distribution and respirometric tests. *Environmental Science and Pollution Research*, 2014, 22 (17), pp.nicolas.roche. 10.1007/s11356-014-3667-0 . hal-01086582

HAL Id: hal-01086582

<https://hal.science/hal-01086582v1>

Submitted on 3 May 2019

HAL is a multi-disciplinary open access archive for the deposit and dissemination of scientific research documents, whether they are published or not. The documents may come from teaching and research institutions in France or abroad, or from public or private research centers.

L'archive ouverte pluridisciplinaire **HAL**, est destinée au dépôt et à la diffusion de documents scientifiques de niveau recherche, publiés ou non, émanant des établissements d'enseignement et de recherche français ou étrangers, des laboratoires publics ou privés.

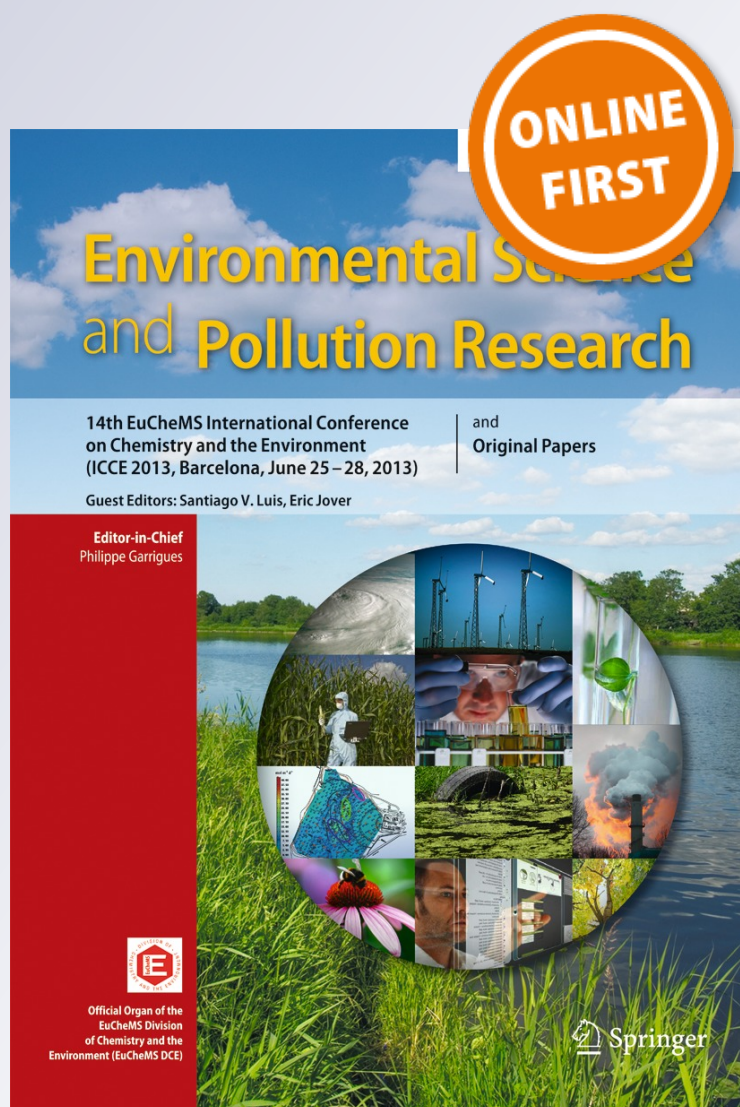
Modeling partial nitrification and denitrification in a hybrid biofilm reactor: calibration by retention time distribution and respirometric tests

Ming Zeng, Audrey Soric & Nicolas Roche

Environmental Science and Pollution Research

ISSN 0944-1344

Environ Sci Pollut Res
DOI 10.1007/s11356-014-3667-0



Your article is protected by copyright and all rights are held exclusively by Springer-Verlag Berlin Heidelberg. This e-offprint is for personal use only and shall not be self-archived in electronic repositories. If you wish to self-archive your article, please use the accepted manuscript version for posting on your own website. You may further deposit the accepted manuscript version in any repository, provided it is only made publicly available 12 months after official publication or later and provided acknowledgement is given to the original source of publication and a link is inserted to the published article on Springer's website. The link must be accompanied by the following text: "The final publication is available at link.springer.com".

Modeling partial nitrification and denitrification in a hybrid biofilm reactor: calibration by retention time distribution and respirometric tests

Ming Zeng · Audrey Soric · Nicolas Roche

Received: 28 April 2014 / Accepted: 26 September 2014
© Springer-Verlag Berlin Heidelberg 2014

Abstract In this study, partial nitrification coupled with denitrification is modeled in a hybrid biofilm reactor with different hydraulic saturation conditions. The activated sludge model with two-step nitrification is implemented in GPS-X software. Hydrodynamic modeling by retention time distribution analysis and biokinetic measurement by respirometric tests are two significant parts of model calibration. By combining these two parts, partial nitrification in the aerobic part of the column is well simulated with a good agreement between experimental and modeled effluent concentrations of NH_4^+ and NO_2^- . Particularly, fully hydraulic saturation condition contributes to the large hydraulic volume of 1.9 L and high produced NO_2^- concentration around 40 mg L^{-1} . However, modeling denitrification still needs to be improved with more calibrated parameters. Furthermore, three alternatives are proposed for the optimization of reactor design and operation.

Keywords Hydrodynamic behavior · Ammonium-oxidizing bacteria · Respirometer · Engineering · GPS-X · Wastewater treatment

Abbreviations

A Specific surface area of porous media (square meters per cubic meter)

Responsible editor: Gerald Thouand

Electronic supplementary material The online version of this article (doi:10.1007/s11356-014-3667-0) contains supplementary material, which is available to authorized users.

M. Zeng · A. Soric · N. Roche (✉)
Aix Marseille University, Centrale Marseille, CNRS, M2P2 UMR
7340, Europôle de l'Arbois, 13545 Aix en Provence, Cedex 4,
France
e-mail: nicolas.roche@univ-amu.fr

b_H	Decay (endogenous respiration) rate of heterotroph (per day)
b_A	Decay (endogenous respiration) rate of autotroph (per day)
b_{AOB}	Decay (endogenous respiration) rate of AOB (per day)
b_{NOB}	Decay (endogenous respiration) rate of NOB (per day)
$C(t)$	Tracer concentration (grams per liter)
$E(t)$	Retention time distribution (per minute)
e_v	Effective volume ratio (percent)
f_p	Fraction of inert material in biomass (–)
$K_{S,H}$	Substrate constant affinity for heterotroph (milligrams per liter)
$K_{NH,A}$	Substrate constant affinity for autotroph (milligrams per liter)
$K_{NH,AOB}$	Substrate constant affinity for AOB (milligrams per liter)
$K_{NO_2,NOB}$	Substrate constant affinity for NOB (milligrams per liter)
N	Number of stirred tanks (–)
$Q(t)$	Water flow rate at the outlet (liters per minute)
R	Tracer recovery (percent)
r	Respiration rate (milligrams per liter per hour)
t_{actual}	Actual hydraulic retention time (minutes)
t_{im}	Exchanging time between mobile and immobile volume (minutes)
t_{plug}	Time of plug flow (minutes)
V	Hydraulic volume (liters)
X	Biomass concentration (milligrams per liter)
Y_A	Yield rate of autotroph (grams COD per gram N)
Y_{AOB}	Yield rate of AOB (grams COD per gram N)
Y_H	Yield rate of heterotroph (grams COD per gram COD)
Y_{NOB}	Yield rate of NOB (grams COD per gram N)
δ	Mean square sensitivity measure (–)

η	Anoxic growth constant of heterotroph (–)
θ	Nominal hydraulic retention time (–)
$\mu_{A,max}$	Maximum specific growth rate of autotroph (per day)
$\mu_{AOB,max}$	Maximum specific growth rate of AOB (per day)
$\mu_{H,max}$	Maximum specific growth rate of heterotroph (per day)
$\mu_{NOB,max}$	Maximum specific growth rate of NOB (per day)
τ	Theoretical hydraulic retention time (minutes)

Introduction

Over several decades, partial nitrification is an economic technique in highly efficient compact bioreactors to produce nitrite instead of nitrate by inhibiting nitrite-oxidizing bacteria (NOB). Nowadays, many successful cases of partial nitrification reactors reveal their advantages and necessity in removing nitrogen compounds, especially when they are coupled with denitrification and anaerobic ammonium oxidizing (anammox). A single reactor system of high ammonium removal over nitrite (SHARON) has been developed to accelerate partial nitrification allowing higher NH_4^+ loading rate and less cost of aeration compared with the traditional complete nitrification reactor. For example, Gali et al. (2007) found that SHARON was more stable than sequencing batch reactor (SBR) when the influent ammonium concentration fluctuated, and SHARON was also slightly cheaper. Furthermore, partial nitrification coupled with denitrification needs less organic matter (reduced by 40 %), oxygen (reduced by 25 %), and even half of HCO_3^- added. A full-scale plant (1,500 m^3) combining SHARON reactor with denitrification has been installed to treat ammonium-rich wastewater resulting in cost-efficient industrial processes (Hellings et al. 1999).

Mathematical modeling is not only used to understand mechanisms of pollutant removal, but also to enhance the efficiency of pollutant removal by optimizing the design of the bioreactor. Although default values of various model parameters are usually adopted, they are certainly not able to represent specific processes in all conditions. Thus, it has been well accepted that the calibration processes ought to be carried out in order to realize the accurate simulated results in different types of bioreactors. So far, Petersen et al. (2002) and Vanrolleghem et al. (2003) have described protocols of activated sludge model (ASM) calibration in detail. There are generally three principal aspects: hydraulic, setting, and biological characterizations. Settling performance usually needs to be considered in wastewater treatment plants (WWTPs) with clarifiers. Since this study mainly focuses on pilot-scale bioreactors, two other items are thus discussed except setting calibration.

On one hand, hydrodynamic behavior is a critical part of model calibration, which has been found to determine the prediction of pollutant elimination and sampling strategies in WWTPs (Majewsky et al. 2011). The analysis of retention time distribution (RTD) is an efficient and reliable approach of hydrodynamic study in trickling filter, biological aerated filter, as well as fluidized bed bioreactor (Sánchez et al. 2005; Vanrolleghem et al. 2003; Zeng et al. 2013). Specifically, breakthrough curves (BTCs) are firstly obtained by monitoring the tracer concentration at the outlet as a function of time. Furthermore, hydraulic parameters such as number of stirred tanks and actual hydraulic volume can be known by fitting BTCs with the appropriate hydraulic models.

On the other hand, a great number of biokinetics and stoichiometries need to be measured by either offline or online respirometric tests to conduct the proposed biological calibration. Since series of ASM are developed and continuously improved, parameters in Monod equations of various biological processes are found to be in a wide range of values (Henze et al. 1987, 2000). Over several decades, respirometric test is mainly proposed to measure these parameters in suspended sludge reactors, while traditional respirometric reactor is not suitable for biofilm study due to the potential destruction of biofilm structure by the shear force of aeration. Nowadays, a novel respirometric reactor special for biofilm should be used. In addition, more information like substrate concentrations other than respiration rate gives more precise and reliable biokinetics.

Thus, a comprehensive biofilm model based on ASM with two-step nitrification and biofilm diffusion coefficients was developed in the environment of GPS-X software. The proposed model adopted calibrated hydraulic parameters as well as calibrated biokinetics to simulate processes of partial nitrification coupled with denitrification. Changing hydraulic saturation condition in the reactor helped to emphasize the importance of hydrodynamic calibration. Practically, improvements of reactor design and operation were proposed to enhance the efficiency of partial nitrification.

Material and methods

Reactor and sampling

Setup and operation

Plastic rings (Kaldnes K1[®] with porosity of 80 % and specific surface area of 800 m^2/m^3) coated with inoculated heterotrophic and autotrophic biofilms from SBR were filled in two identical columns. For starting-up nitrification systems, SBR was reported to be an attractive alternative due to a short period of operation required (Torà et al. 2013). Figure 1 shows the diagram of SBR and configuration of pilot column. After

1 month, carriers were transferred into the column that was separated by an air diffuser to create an aerated part with bed volume of 4.7 L and an anoxic part with bed volume of 1.6 L. The air flow rate was set as 1 L min⁻¹.

The height of the outlet tube determined the hydraulic saturation condition in the biofilters. As presented in Fig. 1, when the height of tube stayed 20 cm, the aerated part performed like an unsaturated trickling filter. Then the height of tube, being 40 cm, produced a half-saturated condition. Once the height of tube arrived at 100 cm, fully saturated condition was maintained in the aerobic part.

Synthetic wastewater was prepared by adding sucrose for the development of heterotroph and NH₄Cl for autotroph. The ratio of chemical oxygen demand (COD) by N was 2:1 with high and low NH₄⁺-N concentrations, 150 and 65 mg L⁻¹, respectively. Besides, synthetic wastewater contained 0.7 to 1.0 g L⁻¹ of NaHCO₃, 30 mg L⁻¹ of KH₂PO₃, 20 mg L⁻¹ of CaCl₂, and 20 mg L⁻¹ of MgSO₄. Water was fed in a continuous mode with a peristaltic pump (Masterflex® L/S™) at a flow rate of 0.5 L h⁻¹ and velocity of 1.5 m day⁻¹. The experiment was operated at room temperature (15 to 20 °C) and dissolved oxygen (DO) in the aerobic part of column stayed around 4 mg L⁻¹.

The experimental period lasted 3 months with two operational factors changing: influent NH₄⁺-N concentrations and hydraulic saturation conditions. In the first 4 weeks, at a low influent NH₄⁺-N concentration of 65 mg L⁻¹, two parallel columns were separately maintained in unsaturated and half-saturated condition. In the next 4 weeks, one column in half-saturated condition was switched to fully saturated condition. Afterwards, the influent NH₄⁺-N concentration was increased to 150 mg L⁻¹ for the next 4 weeks.

Physicochemical analysis

Effluents were sampled each day to analyze temperature, DO by a DO meter (Hach HQ10), and pH by a pH meter (Hanna 210). Concentrations of nitrate and ammonium were measured by a NH₄⁺ and NO₃⁻ probe (AN-ISE SC, Hach Lange). Then samples were filtered through a glass membrane of 1.0 μm pore size and 25 mm diameter (Millipore), and frozen before measuring the nitrite that was conducted by a kit of NO₂⁻ (0–150 mg L⁻¹ NO₂⁻-N, Hanna Instrument).

RTD analysis

The 10 to 30 mL of concentrated NaCl solution (200 g.L⁻¹) was injected at the inlet of reactor in a pulse way, which contributed to much higher electronic conductivity (EC) than that of synthetic wastewater. Electronic conductivity of the

effluent was recorded each second by an EC meter (WTW 3310). A calibration curve was carried out by measuring EC values of standard NaCl solutions (concentration from 0 to 40 g L⁻¹).

Breakthrough curves of $E(t)$ were obtained by Eq. 1:

$$E(t) = \frac{C(t)Q(t)}{M_{\text{tracer}}} \quad (1)$$

where M_{tracer} is the total mass of tracer injected (grams), $C(t)$ is tracer concentration (grams per liter), and $Q(t)$ is water flow rate at the outlet (liters per minute).

The actual hydraulic retention time (t_{actual}) and actual hydraulic volume (V_{actual}) was calculated by the first-order moment analysis in Eqs. 2 and 3:

$$t_{\text{actual}} = \int_0^{\infty} E(t)dt \quad (2)$$

$$V_{\text{actual}} = Q \cdot t_{\text{actual}} \quad (3)$$

The theoretical retention time (τ) was calculated by Eq. 4:

$$\tau = \frac{V_{\text{void}}}{Q} \quad (4)$$

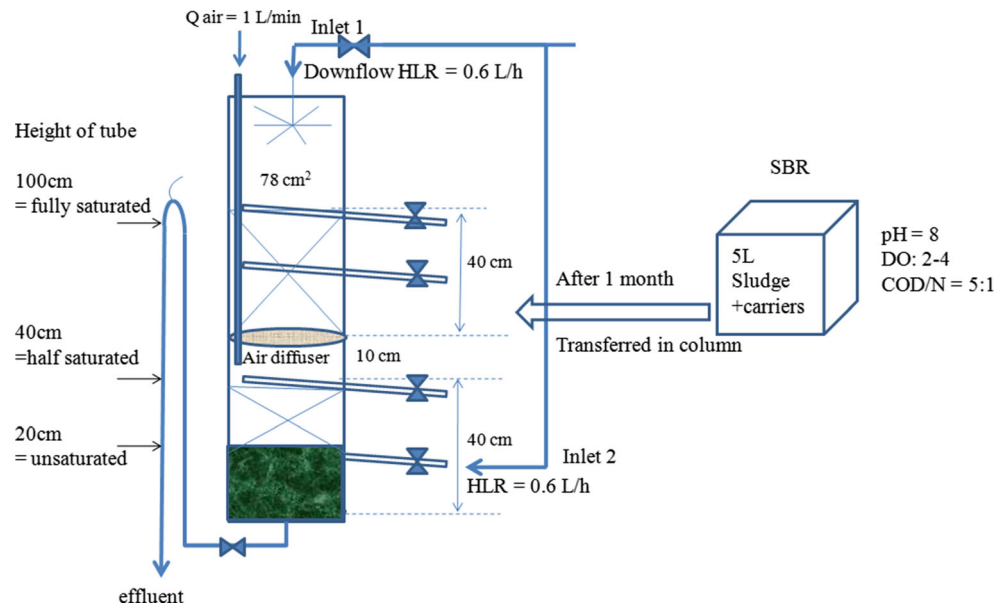
where V_{void} is total void volume in filters.

The ratio of effective volume (e_v) was introduced to describe the hydrodynamic behavior in Eq. 5:

$$e_v = \frac{t_{\text{actual}}}{\tau} = \frac{V_{\text{actual}}}{V_{\text{void}}} \quad (5)$$

DTS Pro. software (Version 4.20, France) offers a user-friendly interface to implement hydraulic models. A model of Tanks-In-Series (TIS) with exchanged zones notably permits the representation of BTCs with a long tail. This model is composed by the mobile volume (V_m) accessible for the effluent outside the biofilm and the immobile volume (V_{im}) of biomass exchanging water with V_m in a certain time (t_{im}). In addition, the model of plug flow should be added if there is a sharp increase of BTCs peak. The sum of plug flow volume, mobile volume, and immobile volume is the actual hydraulic volume that will be entered into the model of biodegradation.

Fig. 1 Sketch of pilot-scale hybrid column and illustration of changing hydraulic conditions in aerobic part



Respirometric test

A respirometer (BM-Evo respirometer, Equipments Scientifiques) was used to carry out respirometric tests for attached biofilm. The oxygen consumption is related to the aerobic activity of the biomass, including exogenous growth of heterotrophic bacteria, exogenous growth of autotrophic bacteria (classified to ammonium-oxidizing bacteria (AOB) and NOB), and their endogenous respirations.

DO concentration ranged between 4 and 5 mg L⁻¹ in the reactor by switching on/off of the aeration valve. A great number of biokinetics and stoichiometries can be calculated from the curve of the respiration rate. Endogenous decay rate (*b*) was determined by monitoring the decrease of endogenous respiration rate for an enough long time (1 day in our study) in Eqs. 6 and 7.

$$b = \frac{b'}{1 - Y(1 - f_p)} \tag{6}$$

$$\ln\left(\frac{r_{end}(0)}{r_{end}(t)}\right) = b' \cdot t \tag{7}$$

where *b'* is the observed decay rate (per day), *Y* is the yield rate, *f_p* is the inert fraction of particulate organic matter that is assumed to be default value of 0.08 in this study, *r_{end}* is the endogenous respiration rate (milligrams per liter per hour), and *t* is the time (days).

Different from decay rate, maximum growth rate (*μ_{max}*) is calculated by the increase of exogenous respiration rate (*r_{ex}*) in Eq. 8.

$$\ln\left(\frac{r_{ex}(t)}{r_{ex}(0)}\right) = (\mu_{max} - b)t \tag{8}$$

The respirometer was coupled with the probe of ammonium and nitrate to continuously measure NH₄⁺ and NO₃⁻ by connecting a peristaltic pump of respirometer to a small tank of 230 mL. Therefore, online analysis of respiration rate, NH₄⁺ and NO₃⁻ allowed calculating yield rates (*Y*) by Eqs. 9 to 11 for heterotroph, AOB, and NOB, respectively.

$$Y_H = \frac{S_s - \int r_{ex}(t)dt}{S_s} \tag{9}$$

$$Y_{AOB} = \frac{3.43S_{NH} - \int r_{ex}(t)dt}{S_{NH}} \tag{10}$$

$$Y_{NOB} = \frac{1.14S_{NO2^-} - \int r_{ex}(t)dt}{S_{NO2^-}} \tag{11}$$

where *S* is the substrate concentration (milligrams per liter.)

In order to conduct a complete respirometric test, 0.5 to 1.0 g L⁻¹ NaHCO₃ was firstly added to supply inorganic carbon for the nitrifier and neutral pH condition from 7 to

8.5. In fact, after we put our biofilm samples into the respirometer, we added distilled water to make the endogenous condition. Then we found that 1 h was needed to wait for the stable condition, including temperature, endogenous respiration rate, and probe of NH₄ and NO₃ measurement. After a stable endogenous respiration was established, 30 mg L⁻¹ N-NH₄Cl, 5 mg L⁻¹ allylthiourea (ATU), and 50 mg L⁻¹ COD from sucrose were successively injected to study activity of autotroph and heterotroph. ATU is usually used to inhibit the activity of autotrophic bacteria. Each pulse injection was conducted after the previous process absolutely was finished, which was signified by the return of endogenous respiration.

Biological modeling

Matrix of ASM with biofilm diffusion

A library of “cn2lib” in GPS-X software (Hydromantis Inc. Canada) was chosen including two-step nitrification that is shown in Table A. 1. A slight change is that the endogenous respiration was assigned in the decay of biomass contributing to the oxygen consumption. The matrix consists of 14 variables and 15 biological processes whose rates are expressed by multi-Monod equations. Diffusion of soluble substrates and DO is one-dimensional in the biofilm thickness with default values of diffusion coefficient of substrates and DO (Table A. 1). Combining diffusion rate and Monod kinetic biodegradation of substrates helps to present mass balance equations of these variables (Huiliñir et al. 2010). The implementation of model was conducted automatically by the numerical solvers in software.

Model validation

The layout of model was composed by trickling filters, and parameters of N and V_{actual} from hydraulic modeling were used to adjust the number of filters and the filter depth in the trickling filter component, respectively. Meanwhile, biokinetics and stoichiometries of different bacteria from respirometric tests were input to the biological parameters of model. The execution of model was under steady-state condition.

Three kinds of indicators were used to evaluate the agreement between experimental and modeled data. The Theil inequality coefficient (TIC) was suggested by Hvala et al. (2005) in Eq. 12:

$$TIC = \frac{\sqrt{\sum_i (y_i - y_{m,i})^2}}{\sqrt{\sum_i y_i^2} + \sqrt{\sum_i y_{m,i}^2}} \quad (12)$$

where y_i is the experimental data, $y_{m,i}$ is the modeled data. The values of TIC below 0.3 imply a good agreement.

The modified index of agreement (MIA) was used as another estimator for a goodness of fit that is defined by Eq. 13 (Legates and McCabe 1999):

$$MIA = 1 - \frac{\sum_i |y_i - y_{m,i}|}{\sum_i |y_i - y_{m,i}| + \sum_i |y_i - \bar{y}_i|} \quad (13)$$

where \bar{y}_i is the average of the experimental data. The MIA varies between 0 and 1, and higher values mean a better agreement between the modeled and experimental data.

The normal objective function (NOF) is the ratio of the root mean square error to the overall mean of the experimental data in Eq. 14 (Gikas et al. 2006):

$$NOF = \sqrt{\frac{\sum_i (y_i - y_{m,i})^2}{N}} \frac{N}{\sum_i y_i} \quad (14)$$

where N is the total number of values. NOF equal to 0 means a perfect match between experimental and modeled data. However, when parameter is less than 1, then the theoretical method is still reliable and can be used with sufficient accuracy.

Results and discussion

Modeling hydrodynamic behavior

Referring to two inlets in the entire column (unsaturated aerobic part at the top and saturated anoxic part at the bottom), an integrated layout is shown in Fig. 2. Hydraulic model in aerobic zone is represented by the plug flow followed by TIS with exchanged zones, and model in anoxic zone is assumed to be described by the TIS. Two hydraulic saturation conditions in the aerobic part were compared: unsaturated and fully saturated. Experimental and fitted BTCs are presented in Fig. 2 with a good consistency, except for the end tail of BTCs, probably due to the tracer recovery less than 90% (Table 1). Although changing NaCl by another tracer like Li⁺ could give a high tracer recovery even in field-scale trickling filter due to its lower detection limit and inert characteristic for biology (Séguret et al. 2000), experimental BTCs in this study

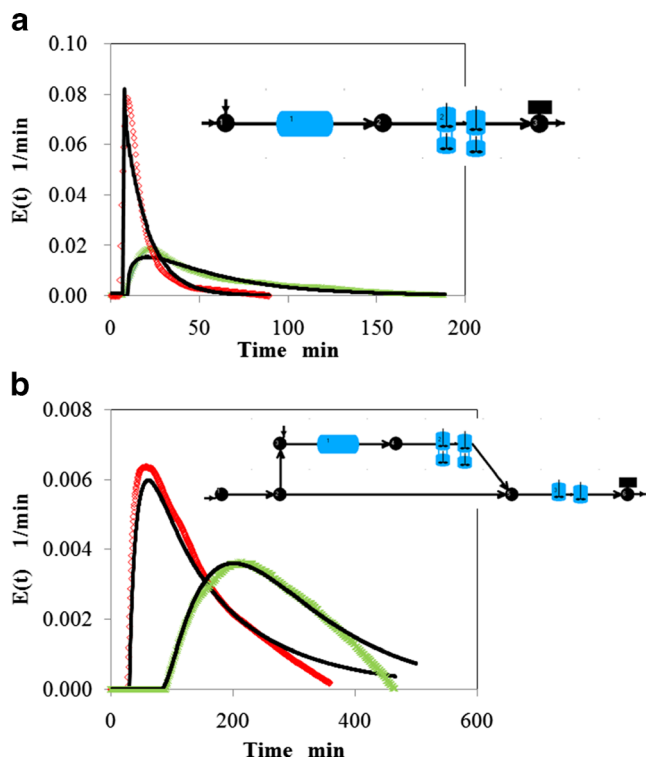


Fig. 2 Layout of the entire column and experimental and modeled BTCs after biofilm growth under different hydraulic saturation conditions; experimental data: unsaturated aerobic condition (*open diamonds*), saturated aerobic condition (*multiplication symbol*); modeled data (*lines*)

are thought to be generally well fitted by this integrated model.

The hydraulic parameters are summarized in Table 1. Compared with the unsaturated hydraulic condition, effective volume ratio in aerobic zone increased to 45 % in fully saturated hydraulic condition. The integrated hydraulic model quantified the increase of actual hydraulic volume in aerobic zone that the volume for plug flow increased by 0.45 L, and mobile volume and immobile volume increased by 0.11 and 0.20 L, respectively. Furthermore, taking account into the area of bed surface, the depth of trickling filter bed in the layout of GPS-X software was assigned to be 15, 20, and 25 cm in unsaturated, half-saturated, and fully saturated hydraulic condition, respectively. *N* was assigned to be the number of trickling filter in the layout. This approach bridges hydrodynamic results with the biodegradation model.

Table 1 Hydraulic parameters from hydraulic modeling in the hybrid bioreactor

Hydraulic saturation condition in aerobic part	V_{void}	V_{actual}	Aerobic part			N	Anoxic part		e_v	R
			V_{plug}	V_m	V_{im}		V	N		
	L	L	L	L	L		L	L	%	%
Unsaturated	5.00	1.49	0.23	0.85	0.09	1	0.32	1	30	91
Saturated	5.00	2.25	0.68	0.96	0.29	2	0.32	1	45	83

Calibration of biokinetics and stoichiometries

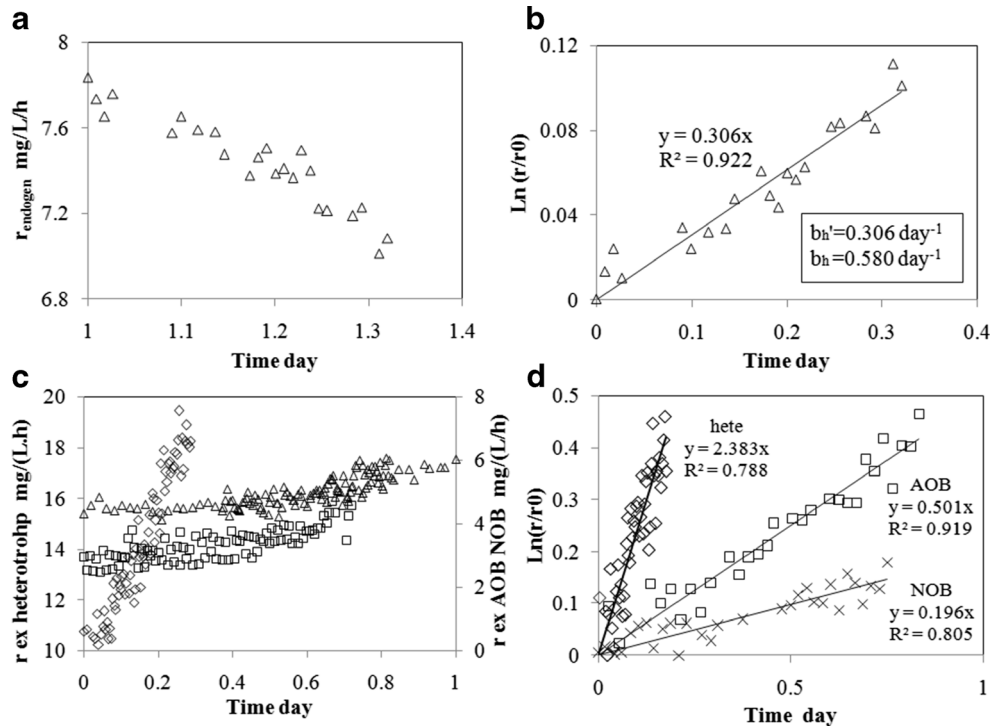
Calculating parameters of *b*, μ_{max} , and *Y*

Figure 3a and b introduces the changing of respiration rate of heterotrophic biofilm after 1 day endogenous condition. During first day, the endogenous respiration rate stayed around $7.8 \text{ mg L}^{-1} \text{ h}^{-1}$, while a slow decreasing trend of endogenous respiration rate was observed after 1 day in Fig. 3a, which is caused by the decay of biomass. Then, in light of Eqs. 6 and 7, the decay rate of heterotrophic biofilm arrived at 0.58 day^{-1} with a good linear relation coefficient of 0.922 in Fig. 3b.

However, by this approach, it is impossible to measure the decay rate of autotrophic bacteria owing to a low endogenous respiration rate for autotroph (normally from 1 to $3 \text{ mg L}^{-1} \text{ h}^{-1}$) and an extremely long experimental time. Indeed, Manser et al. (2006) conducted respirometric tests during 7 to 10 days to monitor the decrease of endogenous respiration rate of AOB and NOB, and the values of b_{AOB} and b_{NOB} had no difference. In this study, default values of b_A , b_{AOB} , and b_{NOB} were adopted being 0.2, 0.17, and 0.17, respectively, which have been used in other studies (Eldyasti et al. 2011; Henze et al. 1987).

Maximum growth rate of biomass is usually measured by a trend of gradual increase of exogenous respiration rate after substrate addition, which is indicated in Fig. 3c. Furthermore, Fig. 3d suggests that the value of $\mu_{\text{max,H}}$, $\mu_{\text{max,AOB}}$, and $\mu_{\text{max,NOB}}$ reached 3.06, 0.67, and 0.30 day^{-1} for heterotroph, AOB, and NOB, respectively, by using Eq. 8. The premise of this approach can be concluded as excessive biofilm growth under a low ratio of biomass and substrate that corresponded to the ratio of volatile suspended sludge (VSS) by COD approximately being 1:4 (Kappeler and Gujer 1992). Thus, biomass growth is assumed to be associated with an exponential equation. For the biofilm, biomass concentration is quite larger than that of suspended sludge, so the substrate concentration should be enough high in order to produce a gradual increase of exogenous respiration rate. However, Fall et al. (2012) developed a new method to estimate $\mu_{\text{max,H}}$ by measuring the initial rates of respiration at different seeding levels of sludge even at high ratio of VSS/COD. But the batch

Fig. 3 Endogenous respiration rate (a) and calculating decay rate (b) of heterotroph; exogenous respiration rate (c) and calculating maximum growth rate (d) of different bacteria: heterotroph (open diamonds), AOB (open squares), NOB (multiplication symbol)



reactor in this novel method still needs to be improved owing to the complex operation of incremented biofilm seeding procedure.

Figure 4 shows the variation of respiration rate and NH_4^+ concentrations along the time, where the yield rate of AOB is calculated to be 0.30 g COD/g N by analyzing the amount of removed NH_4^+ and consumed oxygen at the end of test. Afterwards, yield rate was used to predict NH_4^+ concentration, which was compared with online measured NH_4^+ concentrations to verify the precision of obtained yield rate. This fitting process is one of the major functions of online NH_4^+ / NO_3^- measurement. A good consistency between experimental and fitted NH_4^+ curves is clearly noticeable in Fig. 4. Additionally, supposing pollutant removal data are not available, it is wise to take advantage of yield rate to induce these data. Because yield rate is assumed to be relatively constant for a specific type of bacteria and is not quite sensitive to the environmental factors, even temperature (Tremier et al. 2005). Overall, calculating yield rate should be highlighted as a critical step for respirogram modeling.

Modeling respirogram

Variation of respiration rate after adding NH_4Cl , ATU, and sucrose is shown in Fig. 5. Simultaneously, removed NH_4^+ and accumulated NO_3^- were monitored online (Fig. 5a and b). Nearly equal values of consumed NH_4^+ -N and produced NO_3^- -N concentrations without obvious NO_2^- accumulation imply that there was two-step nitrification by AOB and NOB

due to low pH of 6–7. High and low concentrations of injected NH_4^+ were compared to verify the repeatability of the simulation of respirograms. Compared with low injected NH_4^+ -N concentration of 3 mg/L, high injected NH_4^+ -N concentration of 27 mg/L had a longer reaction time. But NH_4^+ -N of 27 mg/L was still relatively too low to realize a gradual increasing trend of exogenous respiration rate for biofilm. It is obvious that modeled respiration rate was in a good agreement with experimental one in both NH_4^+ loading rates. This fitting gives an opportunity to verify values of yield rate, maximum growth rate, and affinity constant for substrate that arrived at 0.30 g COD g N^{-1} , 0.70 day^{-1} , and 2.40 mg N L^{-1} ,

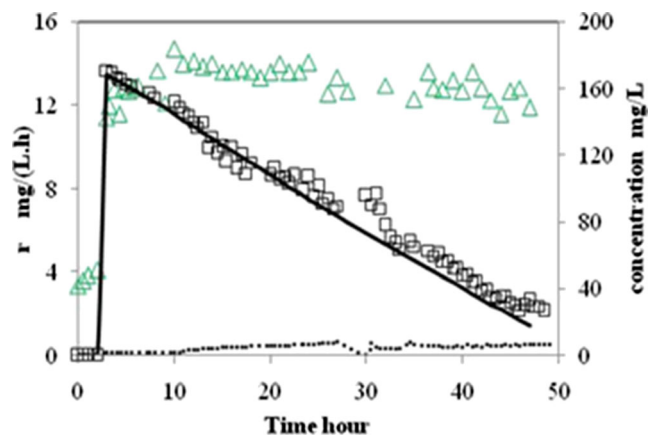


Fig. 4 Variations of respiration rate and NH_4^+ concentration to calculate yield rate of AOB and fitting NH_4^+ concentration by yield rate; respiration rate (open triangle), NH_4^+ -N (line) and NO_3^- -N (broken line), predicted NH_4^+ -N (open squares)

Fig. 5 Variations of respiration rate and concentrations of NH_4^+ and NO_3^- , for autotroph with heterotroph (a and b), for AOB with heterotroph (c and d), for AOB followed by NOB (e); experimental respiration rate (open triangle), modeled respiration rate (dash-and-dotted line), NH_4^+ -N (line), NO_3^- -N (broken line)

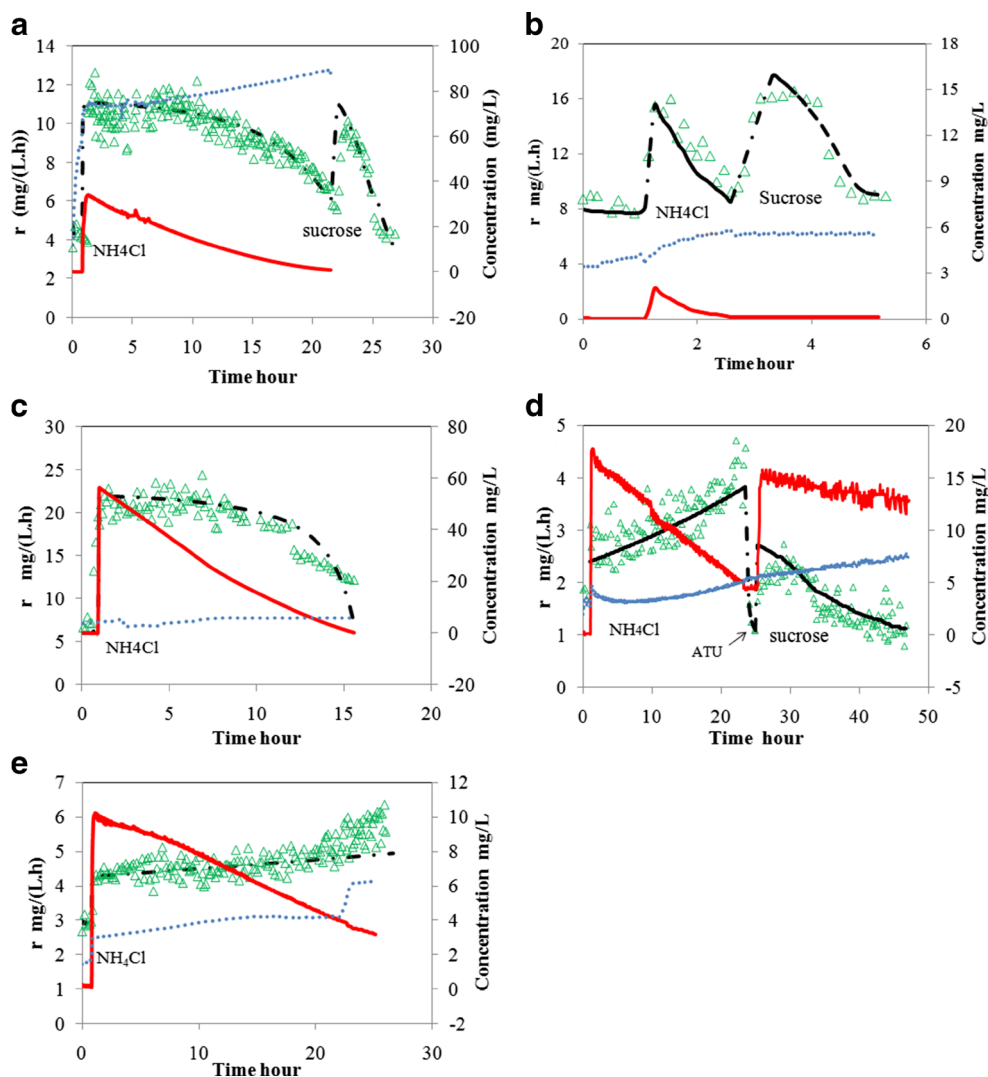


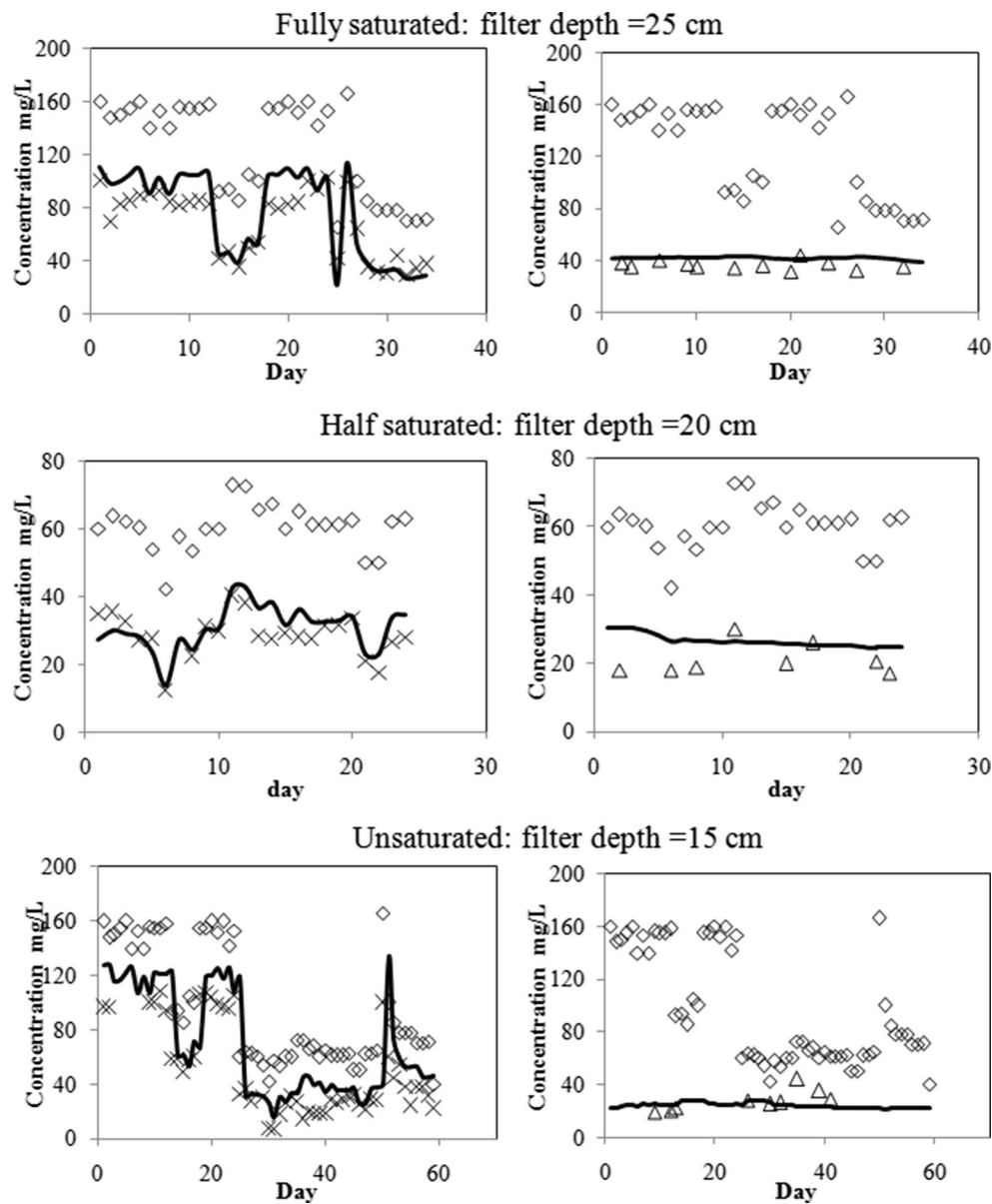
Table 2 Stoichiometries and biokinetics by modeling respirogram

Parameters	Symbols	Units	Partial nitrification		100 % nitrification		Default values	Range of values
			High ^a NH_4^+	Low ^b NH_4^+	High NH_4^+	Low NH_4^+		
Yield rate	Y_A	g COD g N^{-1}	–	–	0.31	0.30	0.24	0.07–0.28
	Y_{AOB}	g_COD.g_N^{-1}	0.30	0.28	–	–	0.15	0.10–0.21
	Y_{NOB}	g_COD.g_N^{-1}	0.11	0.11	–	–	0.04	0.04–0.14
	Y_H	g_COD.g_COD^{-1}	–	–	0.51	0.52	0.67	0.09–0.75
Decay rate	b_H	day^{-1}	–	–	0.58	0.58	0.62	0.02–1.60
Maximum	$\mu_{A,\text{max}}$	day^{-1}	–	–	0.70	0.70	1.00	0.04–1.00
Growth rate	$\mu_{\text{AOB,max}}$	day^{-1}	0.67	0.67	–	–	0.90	0.33–2.55
	$\mu_{\text{NOB,max}}$	day^{-1}	0.30	0.30	–	–	0.70	0.45–1.95
	$\mu_{H,\text{max}}$	day^{-1}	–	–	3.00	3.00	6.00	0.60–8.00
Affinity	K_{NH_A}	$\text{mg NH}_4^+\text{-N.L}^{-1}$	–	–	2.40	2.40	–	–
Constants	$K_{\text{NH}_A\text{AOB}}$	$\text{mg NH}_4^+\text{-N.L}^{-1}$	2.40	2.40	–	–	0.70	0.02–17.50
	$K_{S,H}$	mg COD.L^{-1}	–	–	25.00	25.00	15.00	5.00–225.00

^a High influent NH_4^+ concentration

^b Low influent NH_4^+ concentration

Fig. 6 Experimental and modeled concentrations of NH_4^+ and NO_2^- under different hydraulic saturation conditions; influent $\text{NH}_4^+\text{-N}$ (open diamonds), effluent $\text{NH}_4^+\text{-N}$ (multiplication symbol), effluent $\text{NO}_2^-\text{-N}$ (open triangle), modeled curve (line)



respectively, for autotroph and $0.51 \text{ g COD g COD}^{-1}$, 3.00 day^{-1} , and $25.00 \text{ mg COD L}^{-1}$, respectively, for heterotroph (Table 2).

Remarkable activity of AOB could be observed in Fig. 5c and d, where no significant NO_3^- accumulation was monitored due to the high pH above 8.0. Because of the low biomass that can be induced from the low endogenous respiration rate in Fig. 5d, a significant gradual increasing trend of exogenous respiration rate appeared after injection of a low $\text{NH}_4^+\text{-N}$ concentration of 15 mg/L . Furthermore, the addition of ATU allowed endogenous respiration rate declining from 2 to $1 \text{ mg L}^{-1} \text{ h}^{-1}$. Therefore, numerical fitting gives values of Y_{AOB} , $\mu_{\text{AOB,max}}$, and $K_{\text{NH, AOB}}$ being $0.29 \text{ g COD g N}^{-1}$, 0.67 day^{-1} , and 2.40 mg N L^{-1} , respectively, that remains

similar at different injecting concentrations of NH_4^+ (Table 2). The decrease of ammonium after addition of ATU in Fig. 5 is supposed to be caused by the assimilation of heterotrophy

Table 3 Values of three indicators to estimate the agreement between modeled and predicted data

Saturation conditions	Effluent NH_4^+			Effluent NO_2^-		
	TIC	NOF	MIA	TIC	NOF	MIA
Fully saturated	0.09	1.16	0.79	0.08	0.63	0.26
Half-saturated	0.08	0.82	0.59	0.15	0.94	0.55
Unsaturated	0.19	3.15	0.68	0.16	0.90	0.30

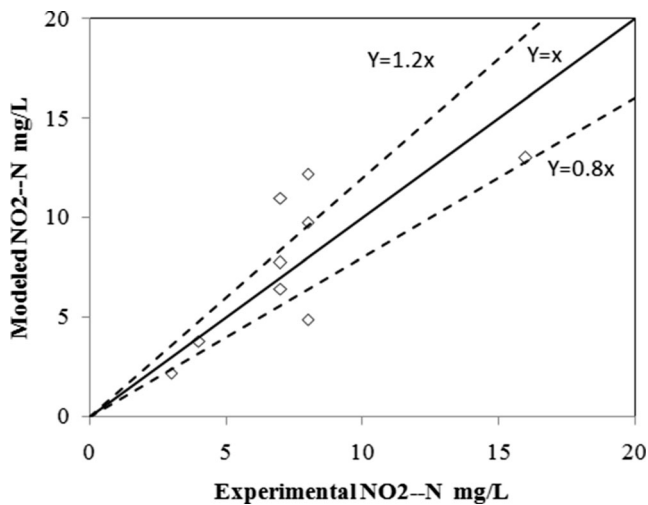


Fig. 7 Comparing experimental and modeled effluent NO_2^- -N concentrations in anoxic part

(Akunna et al. 1994), while slight increase of nitrate during about 25 h could be caused by the aeration condition for a long time.

Interestingly, complete nitrification occurring after a certain time of partial nitrification was observed in Fig. 5e. After the injection of NH_4Cl , exogenous respiration rate increased to a stable value of $4.3 \text{ mg L}^{-1} \text{ h}^{-1}$ associated with the remarkable decrease of NH_4^+ but slight NO_3^- increase, which indicates that partial nitrification was the dominant biological activity.

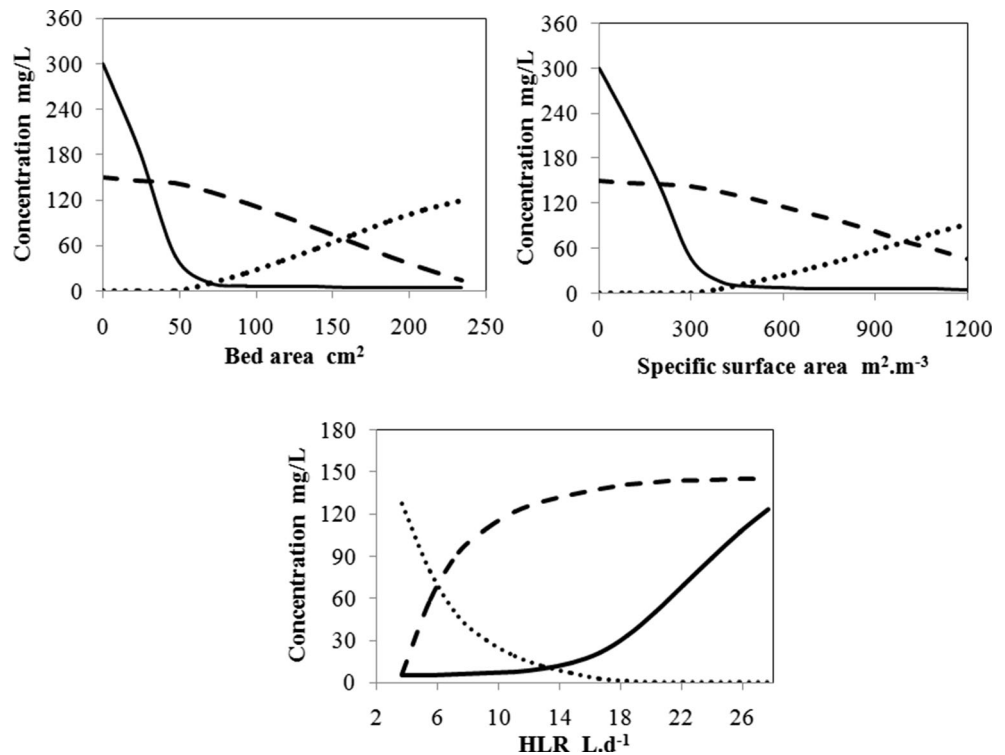
Nevertheless, remarkable NO_3^- -N was detected arriving at 6 mg L^{-1} along with the gradual increase of exogenous respiration rate. This suggests that the activity of NOB contributed to the complete nitrification at the end of test. Well-fitted respiration rate gives the stoichiometry and kinetics of AOB and NOB in Table 2.

All simulated values in Table 2 remained in the range of reported values in other literatures (Eldyasti et al. 2011; Henze et al. 1987; Henze et al. 2000; Libelli et al. 2001). Additionally, the repeatability of calibrated stoichiometry and kinetics has been verified by changing the injected NH_4^+ concentrations. Most of calibrated values are far from the default ones, which highlights the necessity of biological calibration.

Modeling partial nitrification and denitrification

Effluent NO_2^- and NH_4^+ concentrations in the aerobic part of hybrid bioreactor were modeled in Fig. 6 under different hydraulic conditions that were mainly represented by the actual depth of filter bed. No obvious NO_3^- accumulation resulted from a high level of pH ranging from 8.0 to 8.5. For example, in the fully saturated hydraulic condition, the influent NH_4^+ -N varied between 65 and 166 mg L^{-1} , and the experimental effluent NO_2^- -N and NH_4^+ -N concentrations varied from 31 to 44 mg L^{-1} and 30 to 103 mg L^{-1} , respectively. Correspondingly, the modeled effluent NO_2^- -N and NH_4^+ -N concentrations varied from 38 to 43 and 22 to

Fig. 8 Predicted concentrations of pollutants in effluents as a function of three different operational factors; COD (line), NH_4^+ -N (dash-and-dotted line), NO_2^- -N (broken line)



114 mg L⁻¹, respectively. In order to evaluate the agreement between the simulated effluent NO₂⁻ and NH₄⁺ concentrations and experimental ones in all hydraulic saturation conditions, three indicators were proposed and summarized in Table 3. TIC remained below 0.3, although NOF for effluent NH₄⁺ modeling were over 1 in fully saturated and unsaturated conditions; MIA in both conditions were above 0.68 that, close to 1. Generally, two indicators met the standard, so it is wise to adopt several indicators to evaluate the consistency.

Moreover, the importance of considering hydraulic saturation condition was highlighted by the model validation. Namely, compared with unsaturated and half-saturated conditions, the fully saturated condition contributed to the highest concentrations of produced NO₂⁻ (around 40 mg L⁻¹) due to the highest actual filter depth of 25 cm. Afterwards, the produced NO₂⁻-N decreased below 40 mg L⁻¹ in the half-saturated and unsaturated conditions with less filter depth. Supposedly the theoretical filter depth of 60 cm was used in the model, removed NH₄⁺, and the produced NO₂⁻ will be overestimated.

The other phenomenon is the stable accumulated NO₂⁻ concentration that is independent of the influent NH₄⁺ concentration. The reason could be the low constant affinity of NH₄⁺-N being 2.4 mg L⁻¹ in Table 2 that was quite lower than influent NH₄⁺-N concentration. According to Monod equation, the nitrification rate had a weak relation to the substrate loading, giving rise to a stable NO₂⁻ production rate. Nevertheless, NH₄⁺ removal changed along with the influent NH₄⁺ concentrations, because a part of consumption resulting from NH₄⁺ assimilation by heterotroph for cell synthesis played a major role at high influent NH₄⁺ concentrations. Similarly, Akunna et al. (1994) reported that up to 30 % of added NH₄⁺ was used for both autotrophic and heterotrophic cell synthesis during aerobic organic carbon removal and nitrification.

When NO₂⁻ entered into anoxic part of hybrid bioreactor, it was denitrified by the heterotroph. The relative biokinetics involving in anoxic growth factor, maximum growth rate of heterotroph, and constant affinity of anoxic DO that were set as 0.8, 5.0 day⁻¹, and 0.45 mg L⁻¹. According to the relation between experimental and predicted NO₂⁻-N concentrations (Fig. 7), a good agreement was found for the majority of points corresponding to the confidence interval of ±20 %. However, few points were out of this zone, which suggested the requirement of more experimental data, especially concentrations of NO₂⁻-N larger than 10 mg L⁻¹. While the concentration of NO₂⁻ entering the anoxic part stayed low due to the dilution effect of inlet 2 (Fig. 1). Thus, it is wise to promote the partial nitrification in the aerobic part.

Alternatives to improve efficiency of partial nitrification

Taking advantage of another function of modeling to optimize the design and operational conditions of reactors for a better

performance and less cost, we proposed a few possible alternatives to improve nitrification efficiency at high influent NH₄⁺ concentrations. Specifically, three factors including hydraulic loading rate (HLR), surface area of filter bed, and specific surface area of porous media were investigated in Fig. 8. Concerning predicted concentrations of COD, NH₄⁺, and NO₂⁻, the HLR, bed surface area, and specific surface area of carrier were suggested to be 6 L day⁻¹, 170 cm², and 1,000 m² m⁻³, respectively, for a desirable partial nitrification for the anammox process (ratio of NH₄⁺-N/NO₂⁻-N being 1:1) at high influent NH₄⁺ concentration. On the contrary, once HLR increased up to 18 L day⁻¹ or bed surface area and specific surface area of carriers declined below 60 cm² and 300 m² m⁻³, respectively, no nitrification will even be monitored.

This result connects the numerical modeling with the engineering design that are two major areas in wastewater treatment. Many researchers gave efforts to apply models to guide engineering. A model of McCarty and Meyer (2005) indicates that particle size of carriers, reactor diameter, and pollutant concentration affected performance of biological fluidized-bed reactor, and the current design provide a good factor of safety in operation, even though empty-bed detention time decreased below 10 min.

Conclusion

Model calibrations by hydraulic modeling and respirometric tests gave rise to good modeling results of partial nitrification coupled with denitrification in a hybrid biofilm reactor. Particularly, effluent NH₄⁺ and NO₂⁻ concentrations in reactors under different hydraulic saturation conditions were well predicted by the model due to calibrated actual hydraulic volumes and numbers of tanks. Most of biokinetics and stoichiometries could be calculated by the protocol in this study. Overall, the model developed in GPS-X software well predicts pollutant removal and helps engineers to optimize design and operation of reactors.

References

- Akunna J, Bizeau C, Moletta R, Bernet N, Héduit A (1994) Combined organic carbon and complete nitrogen removal using anaerobic and aerobic upflow filters. *Water Sci Technol* 30:297–306
- Eldyasti A, Andalib M, Hafez H, Nakhla G, Zhu J (2011) Comparative modeling of biological nutrient removal from landfill leachate using a circulating fluidized bed bioreactor (CFBBR). *J Hazard Mater* 187:140–149

- Fall C, Hooijmans C, Esparza-Soto M, Olguin M, Bâ K (2012) Initial-rate based method for estimating the maximum heterotrophic growth rate parameter (μ_{Hmax}). *Bioresour Technol* 116:126–132
- Gali A, Dosta J, Van Loosdrecht M, Mata-Alvarez J (2007) Two ways to achieve an anammox influent from real reject water treatment at lab-scale: partial SBR nitrification and SHARON process. *Process Biochem* 42:715–720
- Gikas GD, Yiannakopoulou T, Tsihrintzis VA (2006) Modeling of non-point source pollution in a Mediterranean drainage basin. *Environ Model Assess* 11:219–233
- Hellinga C, Van Loosdrecht M, Heijnen J (1999) Model based design of a novel process for nitrogen removal from concentrated flows. *Math Comput Model Dyn Syst* 5:351–371
- Henze M, Grady C, Gujer W, Marais G, Matsuo T (1987) Activated sludge model No. 1. IAWPRC task group on mathematical modelling for design and operation of biological wastewater treatment, vol 1. Paper presented at the IAWPRC Scientific and Technical Reports, London
- Henze M, Gujer W, van Mino T, Loosdrecht M (2000) Activated sludge models: ASM1, ASM2, ASM2d and ASM3. IWA, London
- Huiliñir C, Romero R, Muñoz C, Bornhardt C, Roeckel M, Antileo C (2010) Dynamic modeling of partial nitrification in a rotating disk biofilm reactor: calibration, validation and simulation. *Biochem Eng J* 52:7–18
- Hvala N, Strmčnik S, Šel D, Milanič S, Banko B (2005) Influence of model validation on proper selection of process models—an industrial case study. *Comput Chem Eng* 29:1507–1522
- Kappeler J, Gujer W (1992) Estimation of kinetic parameters of heterotrophic biomass under aerobic conditions and characterization of wastewater for activated sludge modelling. *Water Sci Technol* 25:125–139
- Legates DR, McCabe GJ (1999) Evaluating the use of “goodness-of-fit” measures in hydrologic and hydroclimatic model validation. *Water Resour Res* 35:233–241
- Libelli SM, Ratini P, Spagni A, Bortone G (2001) Implementation, study and calibration of a modified ASM2d for the simulation of SBR processes. *Water Sci Technol* 43:69–76
- Majewsky M, Gallé T, Bayerle M, Goel R, Fischer K, Vanrolleghem PA (2011) Xenobiotic removal efficiencies in wastewater treatment plants: residence time distributions as a guiding principle for sampling strategies. *Water Res* 45:6152–6162
- Manser R, Gujer W, Siegrist H (2006) Decay processes of nitrifying bacteria in biological wastewater treatment systems. *Water Res* 40:2416–2426
- McCarty PL, Meyer TE (2005) Numerical model for biological fluidized-bed reactor treatment of perchlorate-contaminated groundwater. *Environ Sci Technol* 39:850–858
- Petersen B, Vanrolleghem P, Germaey K, Henze M (2002) Evaluation of an ASM1 model calibration procedure on a municipal–industrial wastewater treatment plant. *J Hydroinf* 4:15–38
- Sánchez O, Michaud S, Escudíé R, Delgenès J-P, Bernet N (2005) Liquid mixing and gas–liquid mass transfer in a three-phase inverse turbulent bed reactor. *Chem Eng J* 114:1–7
- Séguret F, Racault Y, Sardin M (2000) Hydrodynamic behaviour of full scale trickling filters. *Water Res* 34:1551–1558
- Torà JA, Moliné E, Carrera J, Pérez J (2013) Efficient and automated start-up of a pilot reactor for nitrification of reject water: from batch granulation to high rate continuous operation. *Chem Eng J* 226:319–325
- Tremier A, De Guardia A, Massiani C, Paul E, Martel J (2005) A respirometric method for characterising the organic composition and biodegradation kinetics and the temperature influence on the biodegradation kinetics, for a mixture of sludge and bulking agent to be co-composted. *Bioresour Technol* 96:169–180
- Vanrolleghem PA et al (2003) A comprehensive model calibration procedure for activated sludge models. *Proc Water Environ Fed* 2003:210–237
- Zeng M, Soric A, Roche N (2013) Calibration of hydrodynamic behavior and biokinetics for TOC removal modeling in biofilm reactors under different hydraulic conditions. *Bioresour Technol* 144:202–209