



HAL
open science

Simulation of a finishing operation: milling of a turbine blade and influence of damping

Philippe Lorong, Gérard Coffignal, Etienne Balmès, Mikhail Guskov, Anthony Texier

► To cite this version:

Philippe Lorong, Gérard Coffignal, Etienne Balmès, Mikhail Guskov, Anthony Texier. Simulation of a finishing operation: milling of a turbine blade and influence of damping. Proceedings of ASME 2012 11th Biennial Conference on Engineering Systems design and analysis ESDA 2012 July 2-4, 2012, Nantes, France, Jun 2012, Nantes, France. pp.89-98, 10.1115/ESDA2012-82534 . hal-01082886

HAL Id: hal-01082886

<https://hal.science/hal-01082886>

Submitted on 29 Jan 2015

HAL is a multi-disciplinary open access archive for the deposit and dissemination of scientific research documents, whether they are published or not. The documents may come from teaching and research institutions in France or abroad, or from public or private research centers.

L'archive ouverte pluridisciplinaire **HAL**, est destinée au dépôt et à la diffusion de documents scientifiques de niveau recherche, publiés ou non, émanant des établissements d'enseignement et de recherche français ou étrangers, des laboratoires publics ou privés.



Science Arts & Métiers (SAM)

is an open access repository that collects the work of Arts et Métiers ParisTech researchers and makes it freely available over the web where possible.

This is an author-deposited version published in: <http://sam.ensam.eu>
Handle ID: <http://hdl.handle.net/10985/8898>

To cite this version :

Philippe LORONG, Gérard COFFIGNAL, Etienne BALMES, Mickhail GUSKOV, Anthony TEXIER
- Simulation of a finishing operation : milling of a turbine blade and influence of damping - In:
Proceedings of ASME 2012 11th Biennial Conference on Engineering Systems design and
analysis ESDA 2012 July 2-4, 2012, Nantes, France, France, 2012-06-02 - Proceedings of the
ASME 11th Biennial Conference on Engineering Systems Design and Analysis--2012 - 2012

Any correspondence concerning this service should be sent to the repository

Administrator : archiveouverte@ensam.eu

SIMULATION OF A FINISHING OPERATION : MILLING OF A TURBINE BLADE AND INFLUENCE OF DAMPING

Philippe Lorong*

PIMM Laboratory
Arts et Metiers ParisTech
151 boulevard de l'Hopital
75013 Paris, FRANCE
Email: philippe.lorong@ensam.eu

**Gerard Coffignal
Etienne Balmes
Mikhail Guskov**

PIMM Laboratory
Arts et Metiers ParisTech
151 boulevard de l'Hopital
75013 Paris, FRANCE
Email: gerard.coffignal@ensam.eu

Anthony Texier

SNECMA, SAFRAN
rue H.A. Desbrures
BP81, 91003 Evry, FRANCE

ABSTRACT

Milling is used to create very complex geometries and thin parts, such as turbine blades. Irreversible geometric defects may appear during finishing operations when a high surface quality is expected. Relative vibrations between the tool and the workpiece must be as small as possible, while tool/workpiece interactions can be highly non-linear. A general virtual machining approach is presented and illustrated. It takes into account the relative motion and vibrations of the tool and the workpiece. Both deformations of the tool and the workpiece are taken into account. This allows predictive simulations in the time domain. As an example the effect of damping on the behavior during machining of one of the 56 blades of a turbine disk is analysed in order to illustrate the approach potential.

NOMENCLATURE

FE Finite Element,
 τ, t time,
 $[t, t + \Delta t]$ time interval (current increment),
 a_T entity related to the **T**ool,
 a_W entity related to the **W**orkpiece,
 $a^{(i)}$ entity related to the elementary tool $T^{(i)}$,
 \vec{a} vector, 3D usual physical space,

\mathcal{R}_s coordinate system s (and frame),
 $\{A\}_s$ column of components (or coordinates) in \mathcal{R}_s ,
 $[A]_s$ matrix (components in \mathcal{R}_s),
 $\vec{\Omega}$ angular velocity vector with respect to \mathcal{R}_a ,
 $[M]$ mass matrix,
 $[D]$ damping matrix,
 $[K]$ stiffness matrix,
 $[G(\vec{\Omega})]$ Coriolis matrix,
 $[N(\vec{\Omega})]$ centrifugal acceleration matrix,
 $[\tilde{D}(\vec{\Omega})] = [D] + [G(\vec{\Omega})]$
 $[\tilde{K}(\vec{\Omega})] = [K] + \frac{1}{2}[G(\vec{\Omega})] + [N(\vec{\Omega})]$
 $[H(X)]$ value of the *FE* displacement interpolation matrix at point X in the mesh,

columns of generalized:

$\{q\}$ unknown displacements (*dof*)
 $\{\dot{q}\}$ unknown velocities
 $\{\ddot{q}\}$ unknown accelerations
 $\{\delta q\}$ virtual displacements,
 $\{Q\}$ known (given) forces,
 $\{Q\}_{W/T}$ cutting forces acting on the tool,
 $\{Q\}_{T/W}$ cutting forces acting on the workpiece.

*Address all correspondence to this author.

INTRODUCTION

Milling allows to get very complex geometries and thin parts, such as turbine blades. These parts, that are obtained by means of multi-axis machining and numerical control (NC) and may be very costly. In this context, numerical simulations can have a central role when dealing with the optimisation of the machining conditions because iterative experimental approaches based on trial and corrections quickly reach their limits. This results from the wide range of cutting conditions encountered along the tool trajectories which can add irreversible geometric defects on the part. This is particularly true for finishing operations when a high surface quality is expected. Relative vibrations between the tool and the workpiece must be as small as possible, while tool/workpiece interactions can be highly non-linear.

Today, numerical simulation of machining processes have not yet reached the maturity that can be observed in the simulation of other manufacturing processes. Our approach [1], which is applied to the virtual machining of a finishing operation in milling, aims to be a general one.

By "virtual machining" we mean the numerical process allowing to simulate and verify the pertinence of tool paths, taking into account vibrations and material removal in an integrated and general approach. The final description of the surface geometry at the end of the simulation is one of the aims of the simulation, but it is not the only one. Checking the stability, the level of vibrations and the possibility to reduce them by means of adapted modifications of the part boundary conditions, tool paths and of the spindle angular velocity are also among the goals.

Several models have to be set up and coupled to reach this target. To build a predictive model of the dynamics it is necessary to get the instantaneous thickness h of the "boolean chip" (Fig. 1b), which is associated with the simplified model of material removal ("3D eraser") which is adopted (Fig. 1a). At the same time a sufficiently accurate description of the interaction between the tool and the workpiece must be achieved. The instantaneous thickness h is required along all points of the cutting edges. It allows to calculate the forces acting both on tool and workpiece. The forces and resulting vibrations allow then to calculate the evolution of the thickness. This corresponds to a kind of closed loop governing the dynamics of the tool on the one hand, and of the workpiece on the other hand. In order to get both the instantaneous thickness and machined surface, a geometric model which undergoes the same deformations as the workpiece is used. This model, which uses dexels [2], is linked to the finite element model of the workpiece, but is completely different.

In the approach we propose, numerical simulations rely on several models:

1. a numerical model to describe the dynamics of the tool is described section 4.3. As shown section 4, when milling turbine blades, the flexibility of the tool softens the dynamics

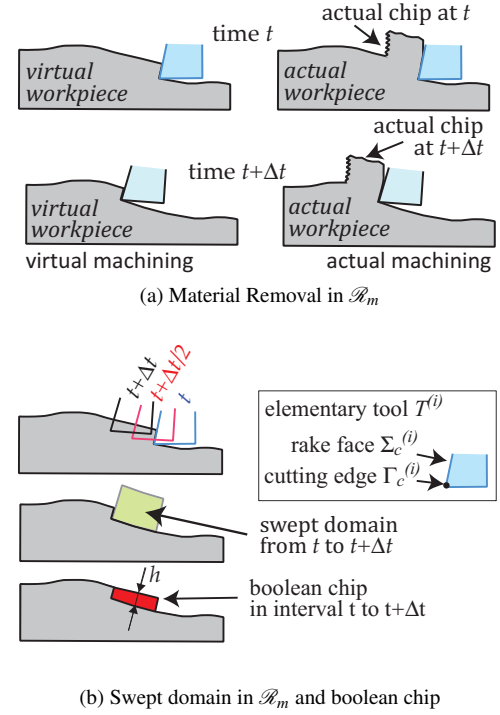


FIGURE 1: MATERIAL REMOVAL AND BOOLEAN CHIP (2D ILLUSTRATION).

of the whole system and must be taken into account because it has a significant influence on the stability limit;

2. a numerical model to describe the dynamics of the workpiece which allows to compute its vibrations, and thus its deformations, during all the machining operation. It is described section 1.2;
3. models for the interaction between the tool and the workpiece. They allow the calculation of the forces applied by the tool to the workpiece, by means of functions of the instantaneous "cut section" Σ along Γ , the set of all active cutting edges. They are presented section 2.
4. a model of the geometry of the machined surface of the workpiece. This model, which is updated at each time step to follow the material removal, allows to calculate anywhere the cut section Σ and an associated depth of cut h . It gives the description of the surface geometry at the end of the simulation (and at any time step). When the dynamic stiffness of the workpiece is of the same order or less than that of the tool in the considered frequency range of force variations, it should be noted that in order to get an accurate value for h it is absolutely necessary to take into account the deformations of the workpiece. This is particularly true for finishing

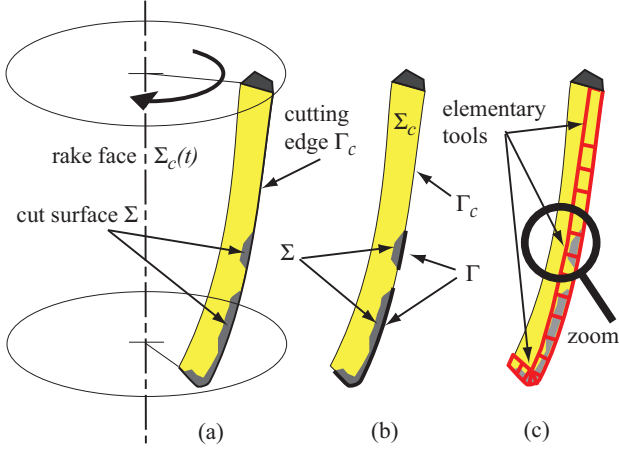


FIGURE 2: END MILL : RAKE FACE Σ_c OF ONE OF THE TEETH AND CUTTING EDGE Γ_c . SURFACE Σ , ACTIVE CUTTING EDGE Γ AND ELEMENTARY TOOLS.

operations. The model of the geometry must thus follow the workpiece deformations.

The original and important point in our approach to virtual machining, is that it takes into account both instantaneous deformations (vibrations) of the tool and the workpiece in the simulation when determining the local depth of cut h and the material removal. As a matter of fact, to get h , which can also be seen as the thickness of a "boolean chip" (see Fig. 1b) all along the set Γ of all active cutting edges at time t , we need a good description of the subset Σ of the rake face Σ_c which contains Γ and has generated the boolean chip.

Figure 2 illustrates for one of the teeth of an helicoidal end mill the subsets of Σ_c , Γ_c , Γ and Σ for that tooth.

The decomposition of the tool in elementary tools (Fig. 2-c, Fig. 3-a and Fig. 3-b) allows a versatile description of its geometry and provides an efficient means to compute both $h^{(i)}$ and the material removal.

Examples of the results that can be obtained are shown for a turbine blade section 4: surface defects (waviness and shape), values of limit damping and amplitude of vibrations during machining. An example taking into account the whole turbine disk with its 56 blades is given 4.4.

Results shown section 4 have been obtained using Nussy, a research software developed at PIMM, Arts et Metiers ParisTech.

1 OUTLINE OF THE NUMERICAL APPROACH

The final aim of our approach is to set up a model for virtual machining in a systematic way, as versatile as finite elements are today.

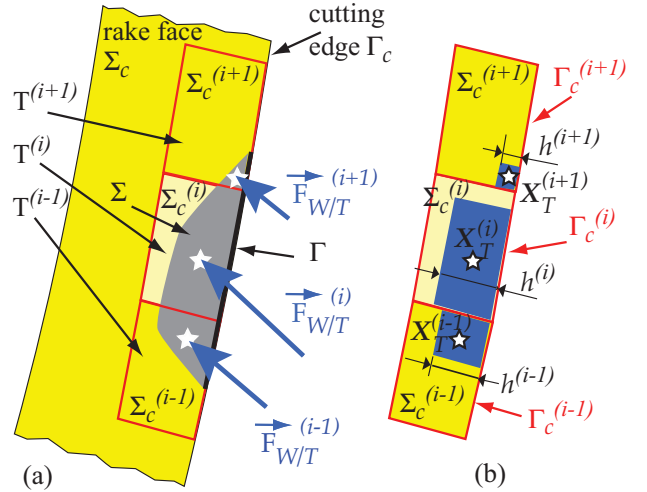


FIGURE 3: ELEMENTARY TOOLS: ACTING FORCES, $T^{(i)}$, $\Sigma_c^{(i)}$ AND CUTTING DEPTH $h^{(i)}$, CLOSE-UP FROM Fig. 2.

Unlike other recent works dealing either with the flexibility of the workpiece and related forces, vibrations and stability ([3, 4]) or with the simulation of the whole machining process in order to check the final surface on purely geometric considerations simulating the whole envelope of the tool trajectory ([5, 6]), we blend both approaches and manage any geometry of workpiece and tool in a unique simulation.

Here, the "tool" takes a general sense and must be understood either as a one piece tool or as a set of inserts, including drills, cutters and end mills, or as a small element of a tool near one of its cutting edge. This element of a drill, a cutter, an insert, is called an "elementary tool" Fig. 2-c and Fig. 3-a.

Once FE models have been built, the general system of equations to be solved, can be written [7] for the tool T and workpiece W :

$$[M]_T \cdot \{\ddot{q}\}_T + [\tilde{D}]_T \cdot \{\dot{q}\}_T + [\tilde{K}]_T \cdot \{q\}_T = \{Q\}_T + \{Q\}_{W/T} \quad (1)$$

$$[M]_W \cdot \{\ddot{q}\}_W + [\tilde{D}]_W \cdot \{\dot{q}\}_W + [\tilde{K}]_W \cdot \{q\}_W = \{Q\}_W + \{Q\}_{T/W} \quad (2)$$

$\{Q\}_T$ and $\{Q\}_W$ take eventually into account known acting forces.

$\{Q\}_{W/T}$ and $\{Q\}_{T/W}$ are determined by Eqn. (4) and Eqn. (6) and necessitate a good description of the boolean chip instantaneous thickness. These generalized forces play a major role in the approach and depend upon the accuracy of the models described sections 2 and 3.

In Eqn. (1) and Eqn. (2) the dofs are defined in local coordinate systems (and frames) \mathcal{R}_T and \mathcal{R}_W . Both are in motion, with large translations and rotations, in the inertial frame and one of

its coordinate systems \mathcal{R}_a . Thus, terms in Eqn. (1) and Eqn. (2) are not defined in the same system of coordinates.

In the general case $\{q\}_T$ are defined in a rotating frame \mathcal{R}_T undergoing large rotations, to describe with respect to it the small translations and rotations of the tool. The same is done for $\{q\}_W$ to describe the workpiece in small translations and rotations in its related frame \mathcal{R}_W .

$\vec{\Omega}_T$ and $\vec{\Omega}_W$ are the angular velocities of \mathcal{R}_T and \mathcal{R}_W with respect to \mathcal{R}_a . When $\vec{\Omega} = \vec{0}$ for a frame, simplifications appear. In this case, this leads for the frame, in Eqn. (1) or Eqn. (2), to $[\tilde{D}] = [D]$ and $[\tilde{K}] = [K]$.

Let $\vec{f}_{T/W}$ be the surface density of forces exerted on the workpiece by the tool. This occurs all along Γ , on the set Σ of surfaces adjacent to the cutting edges Γ_c which are in contact with the workpiece.

The effect of $\vec{f}_{T/W} = -\vec{f}_{W/T}$ is approximated by means of a model described section 2. It allows to approximate $\vec{f}_{T/W}$ by a set of n_f discrete forces $\vec{F}_{T/W}^{(i)}$ acting on the workpiece at points $X_W^{(i)}$.

As a matter of fact, each force $\vec{F}_{T/W}^{(i)}$ has a companion $\vec{F}_{W/T}^{(i)} = -\vec{F}_{T/W}^{(i)}$ acting on the tool at point $X_T^{(i)}$ (action and reaction). The two points $X_T^{(i)}$ and $X_W^{(i)}$ are located at the same point $X_a^{(i)}$ of \mathcal{R}_a , at time τ .

Once the set of $(\vec{F}_{W/T}^{(i)}, \vec{F}_{T/W}^{(i)})$ pairs and related $(X_T^{(i)}, X_W^{(i)})$ pairs are known, they are projected in their respective coordinate systems in \mathcal{R}_T and \mathcal{R}_W leading to $(\{F\}_{W/T}^{(i)}, \{F\}_{T/W}^{(i)})$ and $(\{X\}_T^{(i)}, \{X\}_W^{(i)})$. The virtual displacement $\{\delta u\}_T^{(i)}$ at point $X_T^{(i)}$ of the tool is given by Eqn. (3) and $\{Q\}_{W/T}$ is then obtained by means of the finite element formulation given by Eqn. (4):

$$\{\delta u\}_T^{(i)} = [H(X_T^{(i)})]_T \cdot \{\delta q\}_T \quad (3)$$

$$\{Q\}_{W/T} = \sum_{i=1}^{n_f} [H(X_T^{(i)})]_T^T \cdot \{F\}_{W/T}^{(i)} \quad (4)$$

Similar relations hold for the workpiece:

$$\{\delta u\}_W^{(i)} = [H(X_W^{(i)})]_W \cdot \{\delta q\}_W \quad (5)$$

$$\{Q\}_{T/W} = \sum_{i=1}^{n_f} [H(X_W^{(i)})]_W^T \cdot \{F\}_{T/W}^{(i)} \quad (6)$$

Very often the *FE* model of the workpiece leads to a large number of *dofs* in $\{q(t)\}_W$. In order to be efficient, a reduction ([7]) must be done. This is not discussed here, but it is done and leads to a smaller set of *dofs* $\{q'\}_W$. This can also be necessary for the tool. Such reductions lead to $\{q\}_k = [R']_k \cdot \{q'\}_k$

and $\{\delta q\}_k = [R']_k \cdot \{\delta q'\}_k$ where $[R']_k$ is the reduction matrix. The index k represents T or W . In the *lhs* of Eqn. (1) and Eqn. (2) the $\{q\}_k$ are changed in $\{q'\}_k$, the matrices are pre and post multiplied by $[R']_k^T$ and $[R']_k$ and the *rhs* are premultiplied by $[R']_k^T$. Usually a reduction using the first modes of the *FE* model is done. Static deformations can be added.

1.1 Tool Dynamics

A *FE* model is set up for the tool in its associated coordinate system \mathcal{R}_T . In most situations, a sufficient accuracy is obtained by means of an assembly of beam elements and rigid bodies. In any case this leads to an approximation of the displacement in the form:

$$\{u(X, \tau)\}_T = [H(X)]_T \cdot \{q(\tau)\}_T \quad (7)$$

By means of Eqn. (3) and Eqn. (7), the virtual work principle leads to Eqn. (1) ([7]).

Then, the *FE* solution is obtained step by step for $\tau \in [0, t_F]$, at time steps $t_0 = 0, t_1 = \Delta t, t_2 = 2\Delta t, t_3 = 3\Delta t, \dots, t, t + \Delta t, \dots$ by means of a finite difference scheme using for instance the Newmark method ([7]).

1.2 Workpiece Dynamics

A *FE* model is set up for the workpiece in its associated coordinate system \mathcal{R}_W and, as for the tool, leads to Eqn. (2).

In order to make easier the modeling of virtual material removal, which is described section 2, ten nodes tetrahedral isoparametric elements are preferred. The *FE* approximation of the displacement is given by Eqn. (8):

$$\{u(X, \tau)\}_W = [H(X)]_W \cdot \{q(\tau)\}_W \quad (8)$$

The step by step approach of section 4.3 is used, with the same time steps and increment Δt .

1.3 Iterations

As stated before, Eqn. (1) and Eqn. (2) are not independent because $\{Q(\tau)\}_T$ and $\{Q(\tau)\}_W$ are — at least — functions of the $h^{(i)}$ which are themselves functions of the relative evolution in \mathcal{R}_a of the displacements $\vec{u}_a(X, \tau)_T$ of the tool and $\vec{u}_a(X, \tau)_W$ of the workpiece for $\tau \in [t, t + \Delta t]$ near the domain swept by all $\Sigma_c^{(i)}$. They are thus functions of $\{q(\tau)\}_T$ and $\{q(\tau)\}_W$ in this time interval. If a linear variation of these generalized displacements is assumed with respect to τ , $\{Q(\tau)\}_T$ and $\{Q(\tau)\}_W$ only depend upon $\{q(t + \Delta t)\}_T$ and $\{q(t + \Delta t)\}_W$ which are the unknown at time t . In addition to the step by step solution, we thus need iterations to satisfy both Eqn. (1) and Eqn. (2) at the end of the time interval $[t, t + \Delta t]$.

2 MATERIAL REMOVAL

This model is necessary to get an accurate coupling between Eqn. (1) and Eqn. (2) by means of $\{Q\}_{W/T}$ and $\{Q\}_{T/W}$ i.e. finding at time $t + \Delta t$ both the opposite forces $\vec{F}_{W/T}^{(i)}$ and $\vec{F}_{T/W}^{(i)}$ and the points $X_T^{(i)}$ and $X_W^{(i)}$, where they are acting on the tool and on the workpiece. These points are coincident in \mathcal{R}_a at $t + \Delta t$.

An example of the pair $\vec{F}_{W/T}^{(i)}$ and $X_T^{(i)}$ is given Fig. 3-a.

In our approach, the usual concept of boolean operations is used to simulate, at a macroscopic level, the material removal. The action of each elementary tool is simply modelled as if it was a "3D eraser of matter" as illustrated (in 2D) Fig. 1a and Fig. 1b. This is what is done in stability analysis and is in good agreement with experiments ([3, 4]). This assumption is also made for the whole and a priori envelope of the tool along its paths in geometric virtual machining ([5, 6]).

We make this assumption for each time interval $[t, t + \Delta t]$, thus following each elementary tool $T^{(i)}$ and its rake face $\Sigma_c^{(i)}$ during its motion, which is not the case when only the envelope of the whole rotating tool is considered. Here, an accurate simulation of the material removal history cannot be avoided, time step by time step, to reach our goals.

2.1 Material Coordinates

We have to face the difficulty that both the tool and workpiece undergo motion and deformation. In this context, we must consider a material coordinates system \mathcal{R}_m associated to the workpiece. It is associated to the undeformed initial geometry of the workpiece. In \mathcal{R}_m the workpiece remains a rigid body at rest, if we except the material removal which decreases its volume.

The boolean operation between the volume swept during the time step by $\Sigma_c^{(i)}$ and the workpiece domain, in \mathcal{R}_m defines the boolean chip which makes the matter of the workpiece be removed from the geometric model of the workpiece as shown Fig. 1b. This allows to calculate values of $h^{(i)}$ in each elementary rake face $\Sigma_c^{(i)}$ and the related positions $\{X\}_T^{(i)}$. $h^{(i)}$ is a local average of the depth of cut along $\Gamma^{(i)}$ (and during Δt) as illustrated Fig. 3-b and Fig. 1b. This value is used to feed the model to get the $\vec{F}_{T/W}^{(i)}$.

2.2 Swept Domains

To describe the swept domain, it is necessary to set up a systematic and efficient way to model its geometry in \mathcal{R}_W during the interval $[t, t + \Delta t]$. This must be done several times in $[t, t + \Delta t]$, due to iterations to satisfy both Eqn. (1) and Eqn. (2).

A mesh pattern is associated to each rake face $\Sigma_c^{(i)}$. This pattern is shown Fig. 4 in the case of a middle added section. Plane triangles are chosen. The coordinates of their 3 vertices

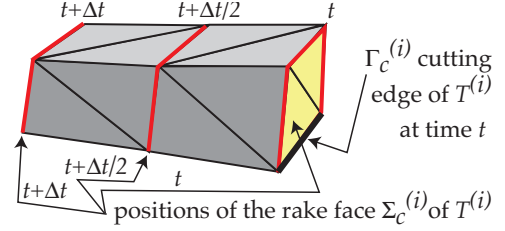


FIGURE 4: SWEEPED DOMAIN IN \mathcal{R}_m BY THE RAKE FACE $\Sigma_c^{(i)}$ OF AN ELEMENTARY TOOL $T^{(i)}$: MESH PATTERN.

are deduced from the positions at t and $t + \Delta t$ of $\Sigma_c^{(i)}$ as given by $\{q\}_T$ and by the positions of \mathcal{R}_T and \mathcal{R}_W in \mathcal{R}_a . The knowledge of the coordinates of its 4 vertices defines the position of $\Sigma_c^{(i)}$.

Intermediate positions of $\Sigma_c^{(i)}$ (at $t + \Delta t/2$ for instance, or more) may be used to take into account the rotation due to the relative motion of \mathcal{R}_T with respect to \mathcal{R}_W .

Once the coordinates of the vertices have been obtained, they are changed to coordinates in \mathcal{R}_W to prepare the obtention of the boolean chip. This thus gives the positions of all the vertices of the mesh (one at t , one at $t + \Delta t$, and if the chosen pattern needs intermediate values, position at intermediate times).

2.3 Interaction Forces

An efficient model to get $\vec{F}_{T/W}^{(i)}$ the forces applied to the workpiece by the tool must be chosen. Any representative model can be used. At least it must allow to determine the $\vec{F}_{W/T}^{(i)}$ on each $\Sigma_c^{(i)}$ by means of $h^{(i)}$ and $b^{(i)}$:

$$\vec{F}_{W/T}^{(i)} = \vec{\mathcal{F}}_{W/T}^{(i)}(h^{(i)}, b^{(i)}, \dots) \quad (9)$$

$b^{(i)}$ is determined such that the local cut section for $T^{(i)}$ is the product $h^{(i)}b^{(i)}$. Other parameters may be added. The decomposition of the tool in n_f $T^{(i)}$ elementary tools allows very flexible modeling. Kienzle's model [8] or more advanced models such the one developed in [9] are good candidates. The latter is used in this paper and for the tool-blade pair shown section 4 the model is the one given p.117 of [10].

3 GEOMETRIC MODEL OF THE MACHINED SURFACE

A recent overview of geometric models in the context of virtual machining can be found in [4]. In our case the geometric model of the machined surface must be updated at each time step to follow the material removal, which is not usually the case. The model must allow to calculate $h^{(i)}$ in any elementary tool $T^{(i)}$ in order to get the distribution and values of the forces applied by

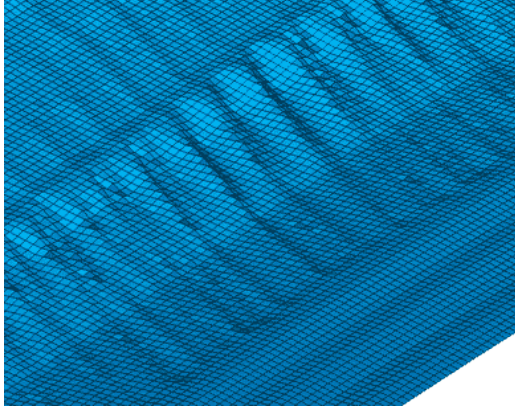


FIGURE 5: MACHINED SURFACE RECONSTRUCTED FROM DEXELS (ZOOM ON A FRACTION OF THE SURFACE SHOWN Fig. 13).

the tool to the workpiece. It gives the final description of the surface geometry at the end of the simulation, and its evolution time step by time step from the beginning of the simulation.

As explained in previous sections, in order to get an accurate value for $h^{(i)}$, it is absolutely necessary to take into account the deformations of the workpiece and its relative motion with respect to the tool. This is particularly true for finishing operations. The model of the geometry must thus follow these deformations.

In the current state of our work, the geometric model of the workpiece uses dexels to model the domain of the workpiece and its boundary. This allows a robust and efficient calculation of all boolean operations. An illustration of the refinement that we use in the simulation of an industrial part to describe the geometry of the machined is given Fig. 5. The boundary of the workpiece domain (the machined surface) is reconstructed from the dexels in order to give a smooth representation. Each small quadrilateral face represents the trace of one dixel (nearly perpendicular to the surface in this particular case). Figure 5 gives a close-up of a small zone of the blade surface. This model is linked to the *FE* one by means of a mapping Φ which is illustrated Fig. 6.

Dexels are set up in \mathcal{R}_m . Dexels are implicitly linked to the finite elements of the workpiece and to its deformation and motion by means of Φ . By means of its inverse Φ^{-1} the coordinates of the vertices necessary to build the domain swept by the rake face $\Sigma_c^{(i)}$ are brought back from \mathcal{R}_W to \mathcal{R}_m and thus takes into account all relative motions of the tool with respect to the matter.

3.1 Mapping From \mathcal{R}_m To \mathcal{R}_W

It must be kept in mind that during the time interval $[t, t + \Delta t]$, the deformation of the workpiece changes as well as the one of the tool. A relative rigid body motion exists also between \mathcal{R}_T and \mathcal{R}_W and combines with the deformation. This is the reason

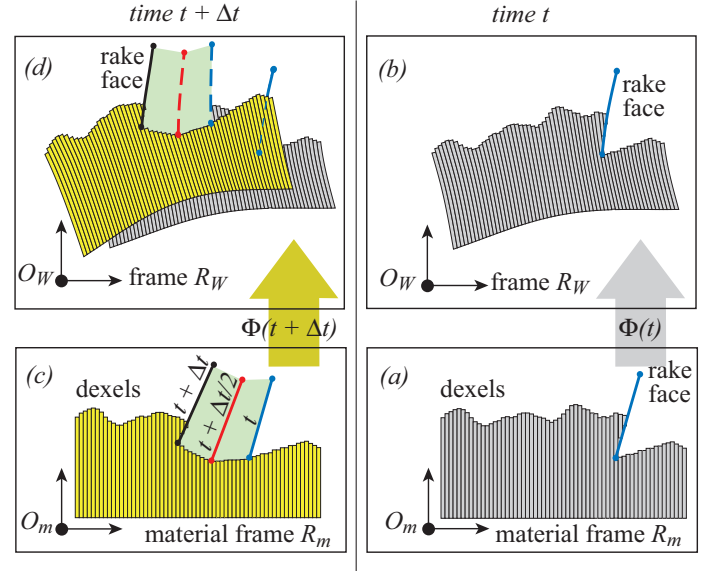


FIGURE 6: DEXELS AND MAPPINGS $\Phi(t)$ AND $\Phi(t + \Delta t)$ FROM \mathcal{R}_m TO \mathcal{R}_W (2D ILLUSTRATION).

why we use the usual material coordinate system. This coordinate system may be seen as a reference frame \mathcal{R}_m in which the points of the workpiece are at rest. In this frame the workpiece keeps its undeformed configuration, if we except the material removal. It must be noted that the definition of the material removal can only be defined in such a material frame when deformation occurs.

The geometric model of the workpiece is thus set up in \mathcal{R}_m . A mapping $\Phi(\tau)$ from \mathcal{R}_m to \mathcal{R}_W is made. If linear isoparametric tetrahedral elements are used, Φ may be explicitly defined by the *FE* model inside the workpiece. It has to be extended to its outside, as shown Fig. 7a in order to be able to bring, by means of its inverse $\Phi^{-1}(\tau)$, the swept domain by each $\Sigma_c^{(i)}$ for $\tau \in [t, t + \Delta t]$ in \mathcal{R}_m . We need that to calculate the material removal during this time interval and then calculate each $h^{(i)}$ and other parameters.

3.2 Mapping Construction

The construction of the mapping Φ is done by means of a finite element mesh of a part of the outside of the workpiece. This extension of the mesh of the workpiece uses tetrahedral elements which are compatible and connected to the workpiece ones via the *dofs* of the nodes that they share. To simplify, a schematic 2D illustration of such meshes is given Fig. 7b and Fig. 7c. The partial mesh of the outside is used to get the images of the vertices of each rake face $\Sigma^{(i)}$ by $\Phi^{-1}(t)$ and $\Phi^{-1}(t + \Delta t)$ at time steps t and $t + \Delta t$. Once this is done, the boolean chip can be calculated as well as the forces $\vec{F}_{W/T}^{(i)}$ and $\vec{F}_{T/W}^{(i)}$.

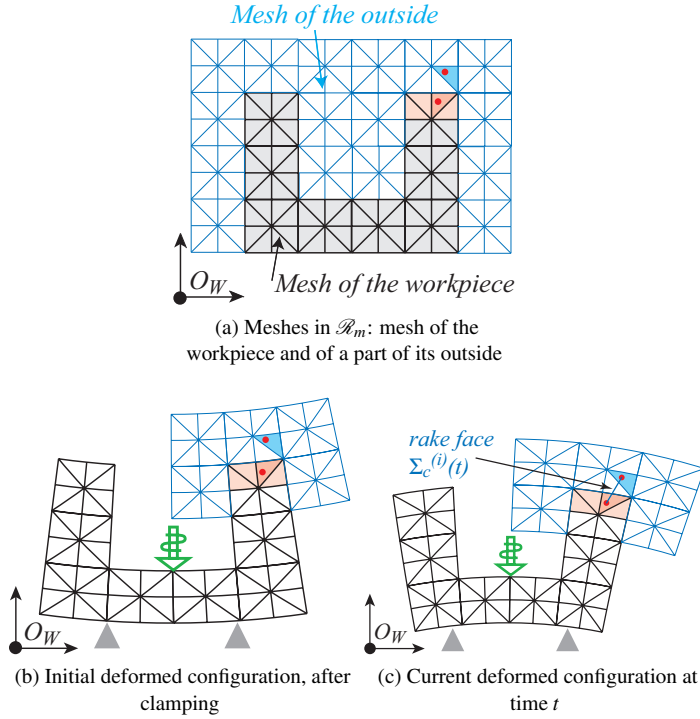


FIGURE 7: DEFORMED CONFIGURATIONS IN \mathcal{R}_W , OF THE WORKPIECE.

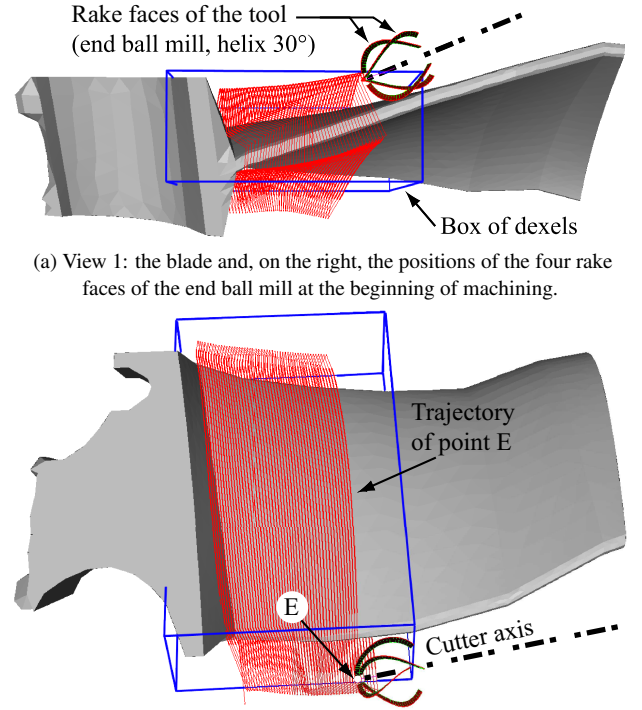


FIGURE 8: VIEWS IN \mathcal{R}_m AT $\tau = 0$ OF THE BLADE, TOOL, TOOL PATH AND DIXEL BOX.

4 EXAMPLE OF A TURBINE BLADE

4.1 General Context

The power of the proposed method is illustrated on an industrial workpiece. Investigations had been made, based on experimental tests, in order to be able to manufacture the blade shown Fig. 8. We show here the results of simulations that were made by means of our method after completion of these experiments. Due to the industrial conditions of these experiments it was not possible to dispose of any kind of signal record. As a consequence, the only available information is:

- an accurate description of the geometries of the end-ball cutter, the initial dimensions of the workpiece, the NC description of the trajectories of the mill as illustrated Fig. 8;
- the mechanical constants (mass density ρ , Young's modulus E and Poisson's ratio ν) for the workpiece and the tool;
- a cutting law extracted from [10] and which was identified in very similar cutting conditions (tool, workpiece, machining parameters).

So the aim of the simulations was principally to show that the conditions that were found experimentally would have been guided efficiently by means of simulations. We have also tested the ability of the approach to deal with large FE model such as a whole turbine disk.

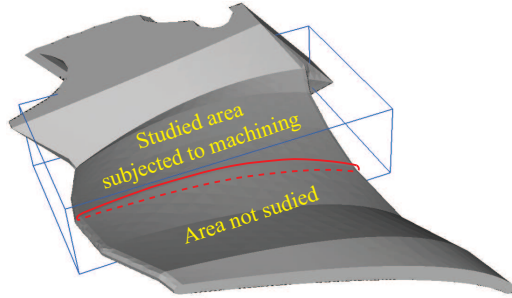
4.2 Main Features of the Simulations

We consider a fraction of the finishing operation of a turbine blade. First it is considered to be alone, then as a part of the whole blisk which has 56 blades.

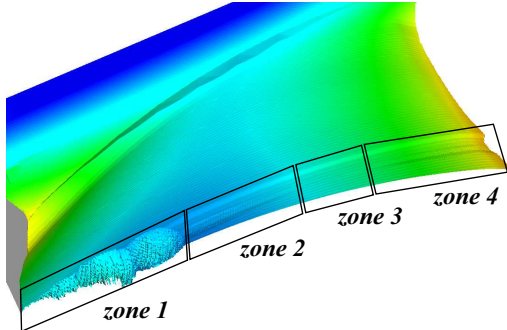
Figure 8 shows the skin of the FE mesh used to model the dynamics of the blade and the rake faces of the end ball mill. It is a four helical fluted one piece tool (helix angle 30°). It is shown at $\tau = 0$, before starting the simulation. Also shown are: the trajectory which is given to the virtual NC control for point E and the edges of the box where are placed the dexels which allow to model the material removal and the related machined surface modifications.

The angular frequency of the cutter is 2700 rev/min . The effects of the rotation of \mathcal{R}_T are neglected in Eqn. (1) and do not exist in Eqn. (2) (\mathcal{R}_W does not rotate). The above mentioned reduction technique is used for both the tool and the workpiece. Two mode shapes of the tool are kept to build $[R']_T$ (the first pair of natural bending modes associated with the double natural frequency at 1960 Hz). The ten first mode shapes of the blade (the workpiece) are used to build $[R']_W$. The corresponding natural frequencies are in the interval $[1130 \text{ Hz}, 13140 \text{ Hz}]$.

A typical result at the end of a simulation is shown Fig. 9b. Excessive vibrations appeared during this virtual machin-



(a) Orientation of the blade in subsequent illustrations



(b) Typical result of the simulation at any selected time τ .

FIGURE 9: MACHINED SURFACE PREDICTED BY VIRTUAL MACHINING: TYPICAL RESULT

ing. Figure 9a shows the orientation of the blade which is kept all along the following figures to illustrate the results.

Surface defects induced by relative vibrations can easily be identified in Fig. 9b. Four zones can be distinguished on the machined area:

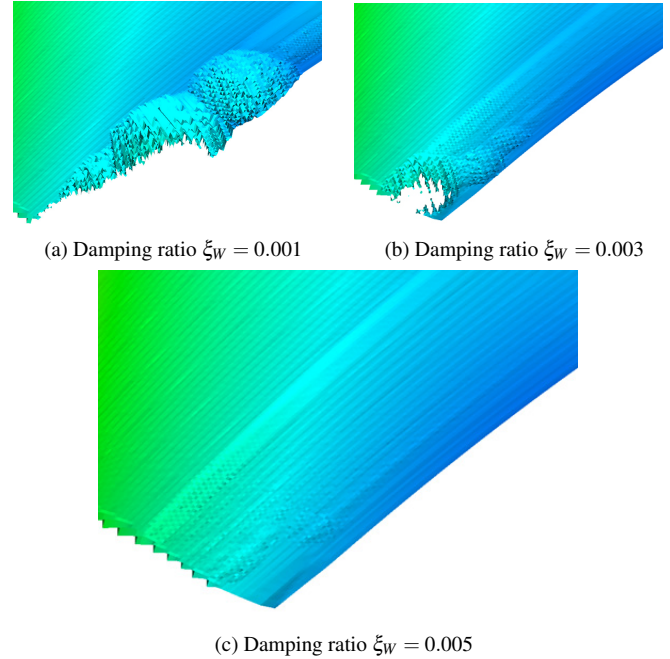
- zone 1: excessive vibrations of the blade, the cutter went through the workpiece ! The blade is a thin part in this zone,
- zone 2: occurring vibrations tend to be stabilized, (the motion of the tool is from the left to the right),
- zone 3: stable vibrations,
- zone 4: new occurrence of vibrations, the amplitude of which is increasing as the tool gets closer to the end of the zone (edge of the blade).

In this example, unstable zones are thus observed in the areas where the local blade stiffness is the smallest (zones where the blade is the thinnest).

4.3 The Blade Alone : Influence of Damping

As said above we did not dispose of any measurements for the tool or workpiece as mounted during the actual machining. So it was not possible to quantify the actual levels of damping.

This led us to model the damping of the workpiece by means of a unique common modal damping ratio ξ_W for the 10 consid-



(a) Damping ratio $\xi_W = 0.001$

(b) Damping ratio $\xi_W = 0.003$

(c) Damping ratio $\xi_W = 0.005$

FIGURE 10: FLEXIBLE WORKPIECE / RIGID TOOL.

ered modes. The same is done for the two modes of the tool introducing a modal damping ratio denoted ξ_T . Then, minimum values $\bar{\xi}$ of the damping ratio, which appear to be limit values in order to get stable conditions are extracted from the simulation.

If we assume that the machining parameters were chosen at SNECMA in order to minimize the duration of the finishing operation, while avoiding the occurrence of defects, they are such that they lead to be near but below the stability limit. The aim of the simulations that are proposed here is to get evaluations of the limit damping ratios, based on the above assumptions. This is done independently for the tool and the workpiece.

First the tool is assumed to be perfectly rigid. Then this assumption is made for the workpiece. Finally, both tool and workpiece vibrations are taken into account.

The resulting geometry of the machined surface is shown Fig. 10 for three values of the damping ratio ξ_W . In this simulation the tool is assumed to be perfectly rigid. The limit damping ratio obtained is near a value of $\bar{\xi}_W = 0.005$. It can be noticed that for this kind of part, this small value is in good agreement with usually observed values.

Figure 11 has been obtained assuming that the workpiece is perfectly rigid. It shows the influence of the damping ratio introduced for the tool on the geometry of the computed machined surface. The results are given for three values of ξ_T . The limit damping ratio obtained is near a value of $\bar{\xi}_T = 0.03$. This value is also a realistic one, since the tool is mounted on a spindle, the design of which tends to increase damping in order to reduce the

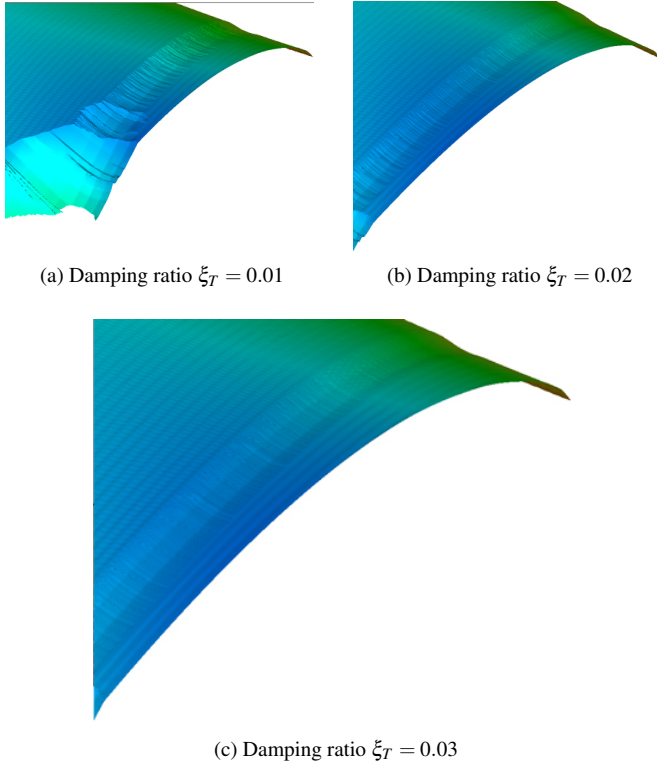


FIGURE 11: FLEXIBLE TOOL / RIGID WORKPIECE

vibrations.

To end these series of simulations, the vibrations of both the tool and the workpiece are taken into account. Fig. 12 shows the different zones that can be observed on the machined surface in this case. An important observation of these simulations is that for damping ratios slightly under the limit observed in the case where either the tool or the workpiece is rigid, for instance ($\xi_W = 0.003$, $\xi_T = 0.01$) or ($\xi_W = 0.004$, $\xi_T = 0.02$) the quality of the machined surface is better than the one obtained assuming the workpiece or the tool to be rigid.

From the above example, it seems that both deformations and vibrations of the tool and the workpiece have to be considered to be sure of what is predicted by the model. However, for the simulated operation, the stability limit seems to remain reached for values near $\xi_W = 0.005$ and $\xi_T = 0.03$).

4.4 The Blade and the Whole Turbine Disk

Investigations were done to evaluate the influence of the dynamics of the disk and its other 55 blades which are neglected when considering the blade alone. Resulting simulated machined surfaces are shown Fig. 13. The modal basis used to build $[R']_W$ contains the first 180 mode shapes. The advantage of the cyclic symmetry of the turbine disk [11, 12] is taken to calculate this

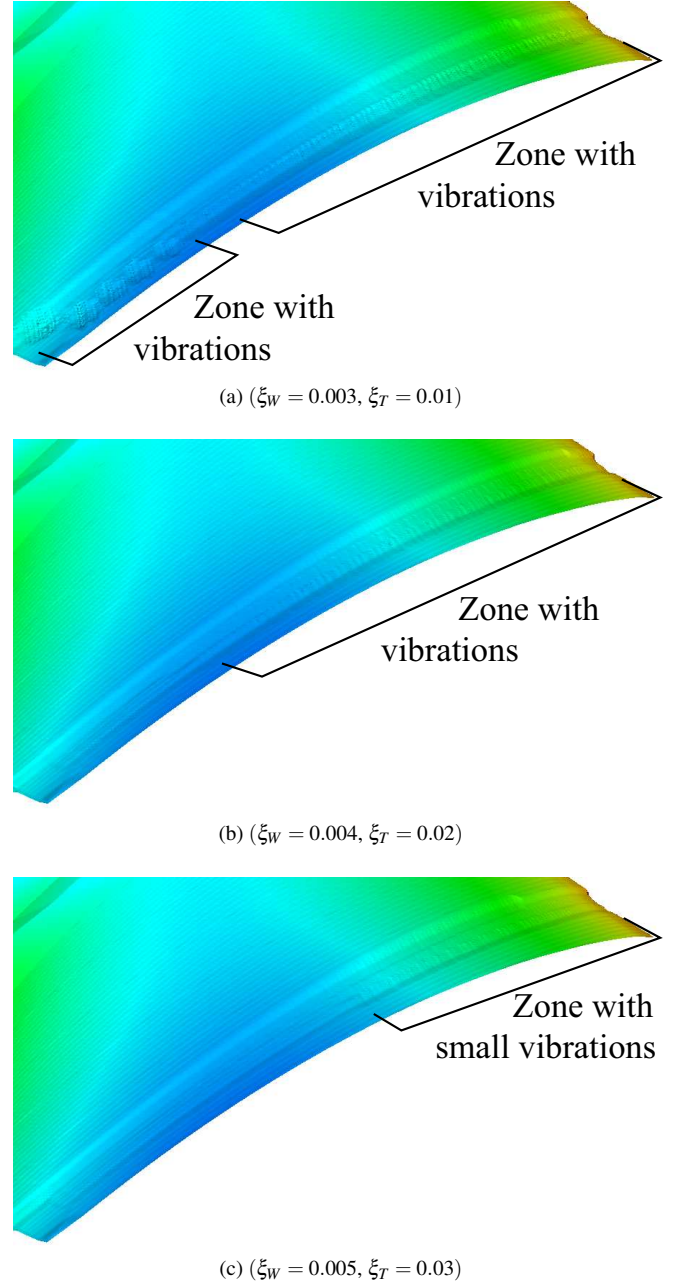


FIGURE 12: TOOL AND WORKPIECE BOTH FLEXIBLE, 10+2 MODES.

modal basis. For this virtual machining, the chosen damping ratios are the same as those of Fig. 12c ($\xi_W = 0.005$, $\xi_T = 0.03$).

It can be observed that there exists a zone which is slightly more concerned by vibrations when considering the whole turbine disk. These results should be compared to instrumented experimental results in order to go further in the analysis. Never-

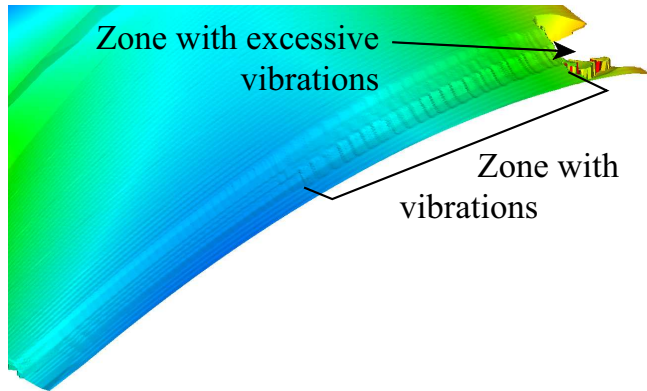


FIGURE 13: TOOL AND WORKPIECE BOTH FLEXIBLE, 180+2 MODES, CYCLIC SYMMETRY ($\xi_W = 0.005$, $\xi_T = 0.03$)

theless it is clear that the quality of the mechanical model of the workpiece is of importance when dealing with the stability of a thin workpiece like the blade under consideration. When taking into account 180 modes, the simulation is twice longer as it is for 10 modes of the blade considered alone.

CONCLUSIONS

In this paper, the main lines of a general method to simulate any machining operation, in the case where the vibrations and deformations of the workpiece cannot be neglected was presented. It uses a combination of several models in order to set up and solve the equations taking into account the whole dynamics of the pair tool plus workpiece. Associated to reduction methods, complex Finite Element models may be used to accurately take into account the deformations and vibrations of both the tool and the workpiece.

The original core of the method is the efficient construction of a fast mapping which allows to bring the rake faces of the tool into the material frame \mathcal{R}_m for each iteration of each time increment.

Some of the features of the approach were demonstrated by its application to an industrial workpiece. In order to illustrate the capabilities of the approach, the influence of damping on the stability limit, for a particular area of the blade, was shown by means of the visual observation of the machined surface. More accurate tools can be developed to quantify the defects from the database which describes the virtual machined surface. Once this database exists and contains a reliable machined surface description, it can be observed as actual machined surfaces are.

References

- [1] Lorong, P., Yvonnet, J., Coffignal, G., and Cohen, S., 2006. "Contribution of computational mechanics in numerical simulation of machining and blanking". *Archives of Computational Method in Engineering*, **13**, pp. 45–90.
- [2] Van Hook, T., 1986. "Real-time shaded nc milling display". In SIGGRAPH'86, pp. 15–35.
- [3] Mañé, I., Gagnol, V., Bouzgarrou, B., and Ray, P., 2008. "Stability-based spindle speed control during flexible workpiece high-speed milling". *Int. J. of Machine Tools and Manufacture*, **48**, pp. 184–194.
- [4] Hong Tzong, Y., and Lee Sen, T., 2009. "Efficient nc simulation for multi-axis solid machining with a universal apt cutter". *J. of Computing and Information Science in Engineering*, **9**.
- [5] Lee, S. W., and Nestler, A., 2011. "Complete swept volume generation, part i: Swept volume of a piecewise c1-continuous cutter at five-axis milling via gauss map". *Computer-Aided Design*, **43**, pp. 427–441.
- [6] Lee, S. W., and Nestler, A., 2011. "Complete swept volume generation, part ii: Nc simulation of self-penetration via comprehensive analysis of envelope profiles". *Computer-Aided Design*, **43**, pp. 442–456.
- [7] Gmür, T., 2008. *Dynamique des Structures. Analyse modale numérique*. Presses Polytechniques et Universitaires Romandes (EPFL).
- [8] Kienzle, O., and Victor, H., 1957. "Spezifische schnitkräfte bei der metallbearbeitung". *Werkstofftechnik und Maschinenbau*, **45**, pp. 224–225.
- [9] Bissey, S., 2005. "Développement d'un modèle d'efforts de coupe applicable à des familles d'outils : cas du fraisage des aciers traités thermiquement". PhD Thesis, Arts et Metiers ParisTech (ENSAM), April 2005.
- [10] Corduan, N., 2006. "Etude des phénomènes vibratoires en fraisage de finition de plaques minces : application aux aubages de turbines aéronautiques". PhD Thesis, Arts et Metiers ParisTech (ENSAM), May 2006.
- [11] Sternchüss, A. and Balmes, E. and Jean, P. and Lombard, JP., 2009. "Reduction of Multistage disk models : application to an industrial rotor". *Journal of Engineering for Gas Turbines and Power*, **131**.
- [12] Balmes, E., and Bianchi, J., 2008-2011. <http://www.sdtools.com/pdf/rotor.pdf>SDT/Rotor; *User's Manual*. <http://www.sdtools.com>SDTools.