



HAL
open science

Assessment of Digital Image Correlation Measurement Accuracy in the Ultimate Error Regime: Main Results of a Collaborative Benchmark

Fabien Amiot, Michel Bornert, Pascal Doumalin, Jean-Christophe Dupré, Marina Fazzini, Jean-José Orteu, Christophe Poilâne, Laurent Robert, René Rotinat, Evelyne Toussaint, et al.

► To cite this version:

Fabien Amiot, Michel Bornert, Pascal Doumalin, Jean-Christophe Dupré, Marina Fazzini, et al.. Assessment of Digital Image Correlation Measurement Accuracy in the Ultimate Error Regime: Main Results of a Collaborative Benchmark. *Strain*, 2013, 49 (6), pp.483-496. 10.1111/str.12054 . hal-01069741

HAL Id: hal-01069741

<https://hal.science/hal-01069741>

Submitted on 29 Sep 2014

HAL is a multi-disciplinary open access archive for the deposit and dissemination of scientific research documents, whether they are published or not. The documents may come from teaching and research institutions in France or abroad, or from public or private research centers.

L'archive ouverte pluridisciplinaire **HAL**, est destinée au dépôt et à la diffusion de documents scientifiques de niveau recherche, publiés ou non, émanant des établissements d'enseignement et de recherche français ou étrangers, des laboratoires publics ou privés.



Science Arts & Métiers (SAM)

is an open access repository that collects the work of Arts et Métiers ParisTech researchers and makes it freely available over the web where possible.

This is an author-deposited version published in: <http://sam.ensam.eu>
Handle ID: <http://hdl.handle.net/10985/8648>

To cite this version :

Fabien AMIOT, Michel BORNERT, Pascal DOUMALIN, Jean Christophe DUPRÉ, Marina FAZZINI, Jean José ORTEU, Christophe POILANE, Laurent ROBERT, René ROTINAT, Evelyne TOUSSAINT, Bertrand WATTRISSE, Jean Samuel WIENIN - Assessment of Digital Image Correlation Measurement Accuracy in the Ultimate Error Regime: Main Results of a Collaborative Benchmark - Assessment of Digital Image Correlation Measurement Accuracy in the Ultimate Error Regime: Main Results of a Collaborative Benchmark - Vol. 49, n°6, p.14 - 2013

Any correspondence concerning this service should be sent to the repository

Administrator : archiveouverte@ensam.eu



Assessment of Digital Image Correlation measurement accuracy in the ultimate error regime: main results of a collaborative benchmark

Journal:	<i>Strain</i>
Manuscript ID:	STRAIN-0863
Manuscript Type:	Full Paper
Date Submitted by the Author:	02-Mar-2013
Complete List of Authors:	Amiot, Fabien; FEMTO-ST, CNRS-UMR 6174, UFC / ENSMM / UTBM Bornert, Michel; Université Paris-Est, Laboratoire Navier (UMR 8205), CNRS, ENPC, IFSTTAR; Doumalin, Pascal; Institut P', UPR 3346 CNRS, Université de Poitiers, SP2MI Dupré, Jean-Christophe; Institut P', UPR 3346 CNRS, Université de Poitiers, SP2MI Fazzini, Marina; Université de Toulouse, INP/ENIT, LGP EA 1905 Orteu, Jean-José; Université de Toulouse, Mines Albi, ICA (Institut Clément Ader) Poilâne, Christophe; CIMAP, UMR6252, Université de Caen Basse-Normandie, CNRS, CEA, ENSICAEN; LAUM, UMR 6613, CNRS, Université du Maine ROBERT, Laurent; Université de Toulouse, Mines Albi, ICA (Institut Clément Ader) Toussaint, Evelyne; Institut Pascal, UMR6602, Université Blaise Pascal – IFMA Wattrisse, Bertrand; Université Montpellier 2, Laboratoire de Mécanique et Génie Civil, UMR CNRS 5508
Keywords:	Digital Image Correlation (DIC), Image matching, Systematic error, Random error, Synthetic images

submitted to *Strain*, March 2013

1
2
3
4
5
6 **Assessment of Digital Image Correlation measurement**
7
8
9 **accuracy in the ultimate error regime: main results of a**
10
11 **collaborative benchmark**
12
13
14
15
16
17
18
19
20
21

22 F. Amiot¹, M. Bornert², P. Doumalin³, J.-C. Dupré³, M. Fazzini⁴, J.-J. Orteu⁵, C.
23
24 Poilâne^{6,7}, L. Robert^{5,*}, R. Rotinat⁸, E. Toussaint⁹, B. Wattrisse¹⁰, J.S. Wienin¹¹
25
26
27
28
29
30

31 *On behalf of the Workgroup “Metrology” of the French CNRS research network 2519 “Mesures*
32 *de Champs et Identification en Mécanique des Solides / Full-field measurements and*
33 *identification in solid mechanics”. URL: <http://www.gdr2519.cnrs.fr>*
34
35
36
37
38
39
40
41
42

43 ¹*FEMTO-ST, CNRS-UMR 6174, UFC / ENSMM / UTBM, Besançon, France*
44

45
46 ²*Université Paris-Est, Laboratoire Navier (UMR 8205), CNRS, ENPC, IFSTTAR, Marne-la-*
47 *Vallée, France*
48
49
50

51 ³*Institut P’, UPR 3346 CNRS, Université de Poitiers, SP2MI, Futuroscope Chasseneuil, France*
52
53

54 ⁴*Université de Toulouse, INP/ENIT, LGP EA 1905, Tarbes, France*
55
56
57

58
59

*Corresponding author: Laurent Robert. Fax: +33 5 63 49 30 42, Email: Laurent.Robert@mines-albi.fr
60

⁵*Université de Toulouse, Mines Albi, ICA (Institut Clément Ader), Albi, France*

⁶*CIMAP, UMR6252, Université de Caen Basse-Normandie, CNRS, CEA, ENSICAEN, Caen,
France*

⁷*LAUM, UMR 6613, CNRS, Université du Maine, Le Mans, France*

⁸*LMPF, Arts et Metiers ParisTech, Châlons en Champagne, France*

⁹*Institut Pascal, UMR6602, Université Blaise Pascal – IFMA, Aubière, France*

¹⁰*Laboratoire de Mécanique et Génie Civil, UMR CNRS 5508, Université Montpellier 2,
Montpellier, France*

¹¹*École des Mines d'Alès, Alès, France*

Running head title: Benchmark on DIC ultimate error

Abstract

We report on the main results of a collaborative work devoted to the study of the uncertainties associated with Digital Image Correlation techniques (DIC). More specifically, the dependence of displacement measurement uncertainties with both image characteristics and DIC parameters are emphasised. A previous work [1] dedicated to situations with spatially fluctuating displacement fields demonstrated the existence of an “ultimate error” regime, insensitive to the mismatch between the shape function and the real displacement field. The present work is focused on this ultimate error. To ensure that there is no mismatch error, synthetic images of in-plane rigid body translation have been analysed. Several DIC softwares developed by or in use in the French community have been used to explore the effects of a large number of settings. The discrepancies between DIC evaluated displacements and prescribed ones have been statistically analysed in terms of random errors and systematic bias, in correlation with the fractional part τ of the displacement component expressed in pixels. Main results are: (i) bias amplitude is almost always insensitive to subset size, (ii) standard deviation of random error increases with noise level and decreases with subset size and (iii) DIC formulations can be split up into two main families regarding bias sensitivity to noise. For the first one, bias amplitude increases with noise while it remains nearly constant for the second one. In addition, for the first family, a strong dependence of random error with τ is observed for noisy images.

Keywords

Digital Image Correlation (DIC); Image matching; Systematic error; Random error; Synthetic images

1 INTRODUCTION

Digital Image Correlation (DIC) is a full-field kinematic measurement technique which has recently become one of the most standard tools in the field of experimental solid mechanics [2, 3]. Among the optical contactless full-field techniques [4, 5] including interferometric methods (e.g. speckle or grating interferometry, holography interferometry) or non-interferometric methods such as the grid method, the DIC method has become very attractive and is now commonly used for measurements of surface deformation. The rapid diffusion of this technique can mostly be explained by operability, flexibility and (apparent) ease of use in comparison with techniques that require, for instance, coherent sources of light and highly controlled optical and vibration-free environments. DIC is based on image processing, and on the assumption that the deformation of the recorded images reflects the actual mechanical transformation of the specimen. The popularity of DIC stems from the simplicity of the experimental set-up and of the specimen preparation. In case the natural contrast of the sample is not sufficient, this preparation mainly consists in a deposit of an appropriate speckle pattern (e.g. spray painting). Another reason for DIC popularity originates from its applicability to various image sources covering a large range of spatial and temporal scales, including digital cameras (combined with classical optics for macroscopic observations or optical microscopy), scanning electron microscopy, atomic force microscopy, *etc.* Digital images recorded by all these techniques can be processed by DIC algorithms to provide quantitative full-field displacement maps and, after differentiation, strain maps. Note however that for the analysis of any image provided by a 2D imaging technique, a great care should be taken to avoid, or at least to limit (or to correct when necessary) any

1
2
3 additional apparent deformation that could arise from out-of-plane displacements or
4
5 misalignments. Whenever necessary, a classical way to take account of these artefacts is
6
7 to use stereoscopic techniques [2].
8
9

10
11 Despite its versatility and apparent ease of use, the DIC technique suffers from some
12
13 disadvantages in comparison with well-established techniques, such as strain gages,
14
15 because the measurement chain in DIC involves a large number of components, each of
16
17 which introducing its own set of error sources. Indeed, DIC measurement errors strongly
18
19 depend on: (i) the quality of the imaging system, (ii) the characteristics of the sample's
20
21 natural or artificially-applied speckle pattern, (iii) the DIC algorithm itself and (iv) the
22
23 particular choice of parameters controlling the chosen algorithm. Although a large
24
25 literature on DIC formulations and applications can be found, very few contributions
26
27 address in a systematic way their metrological performances. The collaborative work
28
29 carried out by the workgroup "Metrology" of CNRS research network 2519 "Full field
30
31 measurement and identification in solid mechanics" aims at contributing to a systematic
32
33 approach to this question [1, 6-7], and at proposing general procedures to assess the
34
35 measurement errors of DIC methods.
36
37
38
39
40
41
42

43 Several approaches have been reported in the literature to evaluate measurement errors of
44
45 DIC methods, often in view of testing new DIC algorithms, or evaluating a particular
46
47 DIC method for some experimental conditions. The first natural way to evaluate
48
49 performances of DIC measurements is to apply them to controlled real experiments.
50
51 Linear or rotation stages have for instance been used to impose a set of in-plane rigid
52
53 body motions (translation and rotation) to the sample or the camera [8-11] or even out-of-
54
55 plane motions [12]. Whereas this approach takes into account all components of a
56
57 particular measurement chain (optics, camera, speckle pattern, lighting conditions, image
58
59
60

1
2
3 processing, *etc.*) relative to some real experimental setup, it suffers from difficulties to
4
5 experimentally prescribe well-controlled displacement or strain fields, both in terms of
6
7 uniformity and intensity. Indeed the uniformity of a prescribed apparent translation
8
9 strongly depends on the alignment of the camera and on the stability of its mount. The
10
11 control or measurement of the displacement amplitude requires a very precise mechanical
12
13 setup, with a resolution at least one order of magnitude better than the one of the DIC
14
15 method, which is in general not available on the experimental setup under consideration.
16
17 In-plane rotations are even harder to prescribe and control. Out-of-plane motions generate
18
19 more uniform transformations, whose characteristics can be determined from the image
20
21 itself [12], but are limited in intensity by the depth of field and optical distortions. The set
22
23 of well controlled transformations is thus very limited, and, in addition, such procedures
24
25 do not allow to easily explore the dependence of the errors with image characteristics.
26
27
28
29
30

31
32 Another approach consists in taking any real image extracted from a real experiment and
33
34 to numerically transform it with a known displacement or strain field. The advantage of
35
36 this approach results from the use of an image that includes all the characteristics of the
37
38 speckle pattern and is thus representative of the experiment. This approach has been
39
40 extensively used, first to prescribe rigid body subpixel translations in order to obtain the
41
42 well-known S-shape bias and standard deviation curves first discussed by Sutton *et al.*
43
44 [9]. It has also been used to apply some arbitrary artificial deformation to images.
45
46 Transformation can be generated in the frequency domain by applying a Fourier filter
47
48 according to the shift theorem [13-16], or in the space domain by applying some image
49
50 interpolation methods [17-20]. However it is important to note that the interpolation
51
52 technique in use might induce its own set of errors, so that the conclusions about DIC-
53
54 related errors might be biased [21]. Indeed it has recently been shown by Reu [22] that
55
56 the numerical shifting of images has an impact on the quantification of the systematic
57
58
59
60

1
2
3 error [9, 10, 23] associated with the interpolation filter of some DIC algorithms.
4
5 Unfortunately, the interpolation error cannot be quantified in practice for real images.
6
7

8
9 Although real images from experiments are representative, the control of their speckle
10 characteristics (histogram, size, spectral contents, image gradients, *etc.*) can be difficult to
11 achieve. In order to study the influence of image parameters on DIC errors, one may thus
12 generate synthetic images and numerically shift or deform them with procedures similar
13 to those described above. However, as discussed previously, some additional errors (even
14 small ones) could be added by the procedure and cannot be separated from the DIC
15 measurement errors.
16
17

18 To avoid adding any error in the images, it is preferable to generate reference and
19 deformed images by means of algorithms which do not rely on any interpolation process.
20 This can be achieved by algorithms that mimic as closely as possible the generation of
21 images within a real camera. One way of doing so is to sample an analytic function
22 representing a continuous physical pattern on a specimen, on a regularly spaced grid
23 corresponding to the CCD array, with procedures that mimic the spatial signal integration
24 of a real sensor. The transformed image is simply obtained by the sampling of the
25 continuous transformation of the analytic function. The difficulty arises from the
26 definition of the noise function that should produce a speckle pattern as realistic as
27 possible. Wattrisse *et al.* [17] and Zhou and Goodson [24] have proposed to define the
28 analytic function as a sum of individual Gaussian shaped speckles for the purpose of
29 testing their own DIC codes. This kind of synthetic images has also been exploited for
30 example in [16, 25-27]. Orteu *et al.* [28] have proposed an image generator based on a
31 modified Perlin noise texture function. Such synthetic images have already been used in a
32 previous work by the workgroup “Metrology” of CNRS research network 2519 for DIC
33
34
35
36
37
38
39
40
41
42
43
44
45
46
47
48
49
50
51
52
53
54
55
56
57
58
59
60

1
2
3 methods error assessments [1, 6-7]. Note that in the case only image pairs linked by some
4
5 particular rigid body translations or homogeneous strain fields are needed, it is possible to
6
7 create such artificially subpixel transformed images, without any additional interpolation
8
9 error, by means of a numerical binning of a ultra-high resolution image, which is either
10
11 synthetically generated [29] or recorded by means of a very high resolution digital
12
13 camera [22].
14

15
16
17
18 In most of the previously cited papers, the assessment of DIC measurement errors, based
19
20 on either numerical or experimental approaches, is in general performed with the purpose
21
22 of evaluating or testing a particular DIC code or algorithm. Thus published results are
23
24 highly dependent on the considered DIC implementation. For studies focused on
25
26 sensitivity to DIC parameters, or on sensitivity to specific DIC algorithms or software
27
28 implementations, results are also relative to the tested code. In this paper, nine DIC codes
29
30 are used in order to give this study a more generic character. The analysis is based on
31
32 displacement error assessment derived from the analysis of synthetic pairs of speckle
33
34 images. Series of synthetic reference and deformed images with random patterns have
35
36 been generated [28], assuming a known displacement field. Displacements are evaluated
37
38 by the nine following DIC packages developed by or used in the French community: Vic-
39
40 2D (L. Robert, ICA, Mines Albi), JH (J. Harvent / J.-J. Orteu, ICA, Mines Albi), 7D (P.
41
42 Vacher, SYMME, ESIA), Aramis 2D (M. Fazzini, LGP, ENIT), Correla (J.-C. Dupré / P.
43
44 Doumalin, PPRIME PEM, Poitiers), CMV (M. Bornert, Lab. Navier, Marne-la-Vallée),
45
46 Kelkins (B. Wattrisse, LMGC, Montpellier), CinEMA (J.-S. Wienin, EMA) and SPA (C.
47
48 Poilâne, CIMAP, Caen). These academic or commercial packages are based on a wide
49
50 range of DIC formulations and different implementations.
51
52
53
54
55
56
57
58
59
60

1
2
3 In a previous work [1, 6] based on (almost) the same set of correlation packages, and
4 making use of simulated images submitted to sinusoidal displacement fields with varying
5 spatial frequencies, it has been shown that correlation computations are associated with
6 three main error regimes depending on the correlation formulation and the real image
7 transformation. The first error regime, which is a known limiting situation for DIC, is for
8 high frequency fields, for which no measurement can be performed when the period of
9 the signal is smaller than the subset size. For lower frequencies, two error regimes can be
10 encountered. The first one, referred to as the “mismatch error regime”, is reached when
11 the adopted shape function does not fit the actual displacement field in the subset (see
12 also [30]). In this regime, the error is proportional to the first order term of the
13 discrepancy between the adopted shape function and the actual displacement field,
14 whatever the shape function, and increases with either increasing window size or
15 increasing speckle size. The second one, referred to as the “ultimate error regime”,
16 corresponds to the opposite situation where the adopted shape function fits the actual
17 displacement field accurately enough. The error then neither depends on the frequency of
18 the signal nor on the amplitude of the displacement gradient. Consequently, it is no
19 longer linked to the shape function mismatch. A first precise observation of this regime
20 has shown that it is essentially governed by the same dependencies as in the case of pure
21 translations for which the local transformation model of the subset naturally matches the
22 real one. In particular, the RMS error increases with noise level and decreases with
23 increasing subset size.

24
25
26
27
28
29
30
31
32
33
34
35
36
37
38
39
40
41
42
43
44
45
46
47
48
49
50
51
52 The present work is focused on this ultimate error regime; both the random errors and the
53 so-called systematic errors [9, 10, 23] correlated with the fractional part of the
54 displacement expressed in pixels are investigated. We propose to focus on the influence
55 of both (i) the correlation formulations/parameters chosen by the user and/or relative to
56
57
58
59
60

1
2
3 the image analysis software (essentially correlation criterion, grey level interpolation and
4 subset size), and (ii) several image characteristics like speckle size (expressed in pixels)
5 and image noise.
6
7
8
9

10
11 Section 2 will be focused on the description of the adopted error assessment procedure.
12 Results obtained with our synthetic images processed with the above mentioned nine DIC
13 packages are thoroughly presented in section 3, both in terms of random and systematic
14 errors. The comparison of some of the observed results to existing models available in the
15 literature will be addressed in a subsequent paper, in which some extensions of these
16 approaches will also be proposed.
17
18
19
20
21
22
23
24

25
26
27 To conclude this introduction, let us point out that the aim of this work is not to compare
28 the relative performances of these DIC packages (which are often not used at their full
29 capabilities), but rather to analyse the relationships between DIC formulations/parameters
30 and DIC measurements errors and consequently to verify that results are essentially
31 linked to underlying DIC formulations and not to specific software implementations.
32
33
34
35
36
37
38

39 40 **2 METHODOLOGY**

41 42 43 *2.1 Synthetic images*

44
45
46 The set of synthetic reference and deformed speckle-pattern images is obtained, as in [1],
47 using the TexGen software [28]. This software has been developed to produce synthetic
48 speckle-pattern images which mimic as realistically as possible real DIC speckle patterns,
49 obtained for instance with spray painting. One of the interests of this software is that any
50 transformation can be applied to a continuous texture function assuming perfect
51 convection of image intensity, and the integration of each pixel is performed by a super
52
53
54
55
56
57
58
59
60

1
2
3 sampling technique which mimics a real image sensor. To ensure that there is no
4
5 mismatch error whatever the shape function adopted by the tested DIC formulations, only
6
7 synthetic images of plane rigid body translation have been generated. The imposed
8
9 displacement $u^{imposed}$ varies from 0 to 1 pixel with a step of 0.02 pixel along the
10
11 horizontal direction. Speckle patterns of three mean speckle radii r have been generated (r
12
13 = $r_0/2$ for the fine, r_0 for the medium, and $2r_0$ for the coarse speckle with $r_0 \approx 2.2$ pixels),
14
15 and uniform Gaussian white noise with four intensity levels (standard deviation $\sigma_n = 0,$
16
17 2, 4, 8, 16 Grey Levels or GL) has been added to the pixel grey levels. Images were
18
19 digitised on an 8-bit grey level scale (0-255). It should be emphasised that the digitisation
20
21 operation generates an additional noise due to the rounding operation. Its standard
22
23 deviation can be evaluated, for noiseless images, to 0.4 GL (see Appendix 1 for more
24
25 details). Consequently, the actual noise associated with $\sigma_n = 0$ is 0.4 GL. For $\sigma_n \geq 2,$ the
26
27 digitisation contribution is less than 2% of the added noise, and thus can be neglected.
28
29
30
31
32
33

34 The size of the images with medium sized speckles was 1024×1024 pixels, while the
35
36 coarse and fine ones were respectively 512×512 and 2048×2048 pixels, so that the size of
37
38 the images with respect to the speckle size was constant. Figure 1 shows sub-images
39
40 (192×192 pixels in size) of the three speckle sizes (fine, medium and coarse) images. A
41
42 6-times enlargement of the sub-images (32×32 pixels windows) is also presented for
43
44 cases with $\sigma_n = 0$ and $\sigma_n = 16$ GL noise.
45
46
47
48

49 **2.2 DIC parameters**

50
51
52 The main DIC parameters of the considered packages are summarised in Table 1. The
53
54 various settings have been chosen among the possible options of each package. Are
55
56 considered, as in [1]: the order of the shape function ϕ describing the local transformation
57
58
59
60

of the image (from rigid to second order, $\phi \in \{0,1,2\}$, knowing that it has little impact on simply translated images, see [1]), the correlation window size d chosen in this work to be 8, 16 or 32 pixels (or 9, 15 and 31 for implementation requiring odd subset sizes), the interpolation of image grey levels $i \in \{l,c,q\}$ (linear, cubic, quintic), and the subpixel optimisation strategy $o \in \{f,p,b,F\}$ (full, partial, bi-parabolic, Fourier), which is relative to the optimisation of the higher order (≥ 1) shape function parameters which can be full (f) or partial (p), or refers to algorithms based on a bi-parabolic interpolation of the translation components of the shape function (b) or on an optimisation in Fourier space (F) [31-32]. Note that in case of a zero-order shape function, the optimisation algorithms work similarly for full or partial optimisation. Note also that the packages are in general not limited to the set of parameters given in table 1. These parameters have been selected in order to cover a set of DIC parameter combinations as large as possible.

2.3 Statistical analysis

Displacement error at the centre of a correlation window of coordinates (i,j) is obtained by:

$$\Delta u_{ij} = u_{i,j}^{measured} - u_{i,j}^{imposed} \quad (1)$$

where $u_{i,j}^{measured}$ is the evaluation of the displacement field provided at this position by the DIC package. Note that for simplicity the error analysis is restricted to the horizontal component of the displacement.

The standard deviation σ_u (random error) is calculated by:

$$\sigma_u = \sqrt{\frac{n \sum_{i,j} \Delta u_{ij}^2 - \left[\sum_{i,j} \Delta u_{ij} \right]^2}{n(n-1)}} \quad (2)$$

with n being the number of positions (i,j) where the displacement is evaluated, while the arithmetic mean (systematic error, or bias) is obtained as:

$$\overline{\Delta u} = \frac{\sum_{i,j} \Delta u_{ij}}{n} \quad (3)$$

Displacements have been evaluated at all positions of a regular square grid in the initial image, with a pitch such that correlation windows at adjacent positions do not overlap, ensuring the statistical independence of the corresponding errors. Note that the number of positions depends on the correlation window size and the image size; in the worst case (512×512 pixels images, and 32×32 pixels windows), there are 256 independent evaluations (and much more in other cases) which is sufficient for an accurate quantification of the error statistics.

It is well known that both arithmetic mean and standard deviation of errors depend periodically on the displacement amplitude with a period of one pixel [8-10, 23], as a consequence of the 1-pixel periodicity of the properties of the image discretisation process (assuming pixels on the sensor behave similarly). So, in this paper, the evolution of these errors is studied for prescribed displacements varying between 0 and 1 pixel by 0.02 pixel steps. Consequently, the prescribed displacement is equal to its fractional part, which will be noted τ in the following.

1
2
3
4
5 The output of this investigation is thus a set of two curves giving the evolution of the
6 random (Equation (2)) and systematic (Equation (3)) errors as a function of the subpixel
7 displacement along the x direction of the images (see Figure 1). Note that because of the
8 isotropy of the speckle patterns, the same curves would have been obtained with
9 translations along the y direction. The coupled dependence of the errors on both x and y
10 subpixel translations has been partially investigated but turned out to be weak, so that
11 only the dependences of the errors on the displacement along x for a vanishing
12 displacement along y have been investigated. Note also that because of the central
13 symmetry of the statistics of the speckle patterns and the image generation procedure, a
14 subpixel translation along x with amplitude u is equivalent to a translation along x with
15 amplitude -u, which is itself equivalent to a translation with amplitude 1-u. As a
16 consequence, the systematic error curves should be central-symmetric with respect to the
17 point (0.5, 0) and the standard deviation curves symmetric with respect to the axis x =
18 0.5. Any deviation from these symmetry properties would indicate that the set of
19 investigated data is not sufficiently statistically representative, or be the signature of a
20 non-symmetric behaviour of the used DIC algorithm.
21
22
23
24
25
26
27
28
29
30
31
32
33
34
35
36
37
38
39
40
41
42

43 The curves can also be described by some of their overall characteristics. In particular,
44 the systematic error curve will be characterised by its amplitude, $A_{\Delta u}$, which is calculated
45 by the difference between its maximum and minimum over all imposed displacements.
46
47
48

49 The random error curve can be characterised by its maximum, its mean and its quadratic
50 mean, which corresponds to the RMS of the random errors for arbitrary subpixel
51 translation. In addition, the dependence of the random error with the fractional part τ of
52 the displacement can be quantified by the standard deviation of the random error curve.
53
54
55
56
57
58
59
60

1
2
3 In next section, results associated with the random error are characterised in terms of its
4
5 mean $\overline{\sigma_u}$ and its standard deviation σ_{σ_u} over all values of subpixel translation τ .
6
7

8 9 **3 RESULTS**

10
11
12 The main results of this analysis, obtained with the 9 DIC packages listed in the
13
14 introduction are presented in this section. It is mostly focused on the above presented
15
16 systematic and random error curves, and their evolutions with image noise and other DIC
17
18 parameters. In a first step (section 3.1), the systematic and random errors are globally and
19
20 qualitatively compared for specific choices of images properties and DIC parameters.
21
22 This will allow us to define two main types of behaviours of the DIC packages in terms
23
24 of the dependence of the errors with image noise. The evolutions of the main
25
26 characteristics of the error curves with noise level, subset size and speckle size are then
27
28 more systematically and quantitatively investigated in the following two sections: the
29
30 evolutions of the amplitude of the systematic errors are discussed in section 3.2 while the
31
32 average and the standard deviation of the random error curve are considered in section
33
34 3.3.
35
36
37
38
39

40 ***3.1 Errors versus imposed displacement***

41
42
43 Systematic error curves obtained with the 9 packages applied on images with the medium
44
45 speckle size ($r = r_0$) and for a subset size of 16 pixels are reported in Figure 2, while
46
47 random errors obtained in the same conditions are given in Figure 3. In each figure,
48
49 results obtained with the images without additional noise (Figures 2a and 3a) are
50
51 compared to those obtained with the highest noise level of $\sigma_n = 16$ GL (Figures 2b and
52
53 3b). These results and their comparisons suggest the following comments.
54
55
56
57
58
59
60

- 1
2
3
4
5
6
7
8
9
10
11
12
13
14
15
16
17
18
19
20
21
22
23
24
25
26
27
28
29
30
31
32
33
34
35
36
37
38
39
40
41
42
43
44
45
46
47
48
49
50
51
52
53
54
55
56
57
58
59
60
- The well-known S-shape of the systematic error curve is recovered for almost all packages and for both noise levels. Curves are in general symmetric with respect to the point (0.5, 0), with the exception of package 3 and 4 applied on images without additional noise. The shape of the S-curve is in general similar to a sine curve, with maxima and minima close to $\tau = 0.2$ and 0.8. This sine-like shape can evolve into an almost triangular-shaped curve on the noisiest images (see Figure 2b). The most noticeable case is provided by package 9 with extrema below 0.1 or above 0.9. Note that the sign of the systematic error depends on the packages but seems to remain the same for a given package when noise is added.
 - The systematic error curve and in particular its amplitude strongly depends on the package in use. This establishes that this error is strongly dependent on the DIC algorithms and their parameters. The amplitude of the systematic errors can vary by a factor of more than 10 between two different packages applied on the same images. Note that this observation is not linked to the performances of the implementations of the various packages but on the algorithms and the particular options which have been selected to run them. Indeed, a same package run with different DIC options can lead to very different systematic error curves. At the higher noise level, several packages exhibit similar systematic error curves, but significant differences with other packages are still observed.
 - More precisely, a detailed analysis of the evolution of the systematic error curves with noise shows that two very different behaviours are observed. On the one hand, some packages used with the parameter combination given in table 1, namely P2, P5, P6, P8 and P9, exhibit a strong dependence of the amplitude with noise. The amplitude is for instance multiplied by 9 when noise is added for P5

1
2
3 and almost 100 for P9. On the other hand, there are packages for which the
4
5 systematic error seems to be almost independent on noise level. This is the case of
6
7 P1 and P7. For these packages and for low noise images, the systematic error is
8
9 larger than the one exhibited by some of the packages of the first set, but is
10
11 definitively lower for noisy images.
12
13
14

- 15
16 - Concerning the random error, it is observed that it increases systematically with
17
18 increasing image noise level. This is expected as DIC algorithms can be
19
20 considered as filters that operate on images as input and produce displacement
21
22 fields as output; noisy input naturally generates noisy output. Note that random
23
24 noise is not null at $\sigma_n = 0$, as a consequence of both quantisation error (see
25
26 Appendix 1), and discretisation of images. However, random error levels can be
27
28 very different from one package to the other, especially at low noise levels, for
29
30 which ratios of 1 to 10 on random errors can be observed. At higher noise,
31
32 discrepancies are less pronounced.
33
34
35
36
37
38 - A significant difference is observed between packages on the shape of the random
39
40 error curve as well as on its evolution with noise (see Figure 3). Again, two main
41
42 behaviours can be defined. The first behaviour consists in a random error level
43
44 almost independent on τ , for both noise levels, and in a moderate evolution of this
45
46 almost constant random error with σ_n . Surprisingly, this behaviour coincides with
47
48 the absence of dependence of the systematic error with noise (as observed
49
50 previously), and is observed for packages P1 and P7. This behaviour is also
51
52 observed for packages P3 and P4. All other packages, which coincide with those
53
54 exhibiting a strong dependence of the systematic error with noise, *i.e.* P2, P5, P6,
55
56
57
58
59
60

P8 and P9, follow another behaviour characterised by a random error dependent on τ , and a strong evolution of the shape of this curve with noise. More precisely, for low noise level, the random error is very low for τ close to 0 and 1, while it gets very large for the same values of τ for high noise levels.

Table 2 summarises the two typical behaviours observed and the packages that follow them. Note that packages P3 and P4 exhibit some intermediate behaviour.

3.2 Systematic errors

Let us now focus on the amplitude of the systematic error $A_{\Delta u}$, given in Figure 4 as a function of the standard deviation of the image noise σ_n for three subset sizes ($d = 8, 16$ and 32 pixels), and for the intermediate speckle size ($r = r_0$). Results are split into 3 plots illustrating the observed behaviours: Figure 4a corresponds to behaviour 1 with a strong nonlinear increase of the amplitude with noise level; Figure 4c illustrates behaviour 2 with almost no dependence with noise level. Figure 4b provides results relative to the packages exhibiting some intermediate behaviour. It can be noticed that this error amplitude does in general not depend on the subset size, with the exception of package P4 and, to a limited extent, of package P1, as well as all packages following behaviour 1 at high noise levels. Most packages exhibit a bias amplitude below 0.01 pixel at low noise levels, the maximal amplitude being 0.025 pixel (package P1). At larger noise levels (typically 4 GL on the 256 available levels), the systematic error can be much larger and becomes a serious limitation of packages following behaviour 1.

As systematic errors are induced by interpolation procedures aiming at restoring continuous grey levels (or correlation coefficients) from discrete pixel values, it does

1
2
3 make sense to explore the influence of image resolution with respect to speckle size.

4
5 With this purpose, we compare results obtained with several subsets with a same ratio d/r ,
6
7 but different pixel samplings. Three situations are considered: low ($r = r_0/2$ with $d = 8$
8
9 pixels), standard ($r = r_0$ and $d = 16$ pixels) and fine ($d = 32$ pixels with $r = 2r_0$) spatial
10
11 image discretisation. This comparison corresponds to the practical situation of the
12
13 imaging of the same region of interest of a same sample with three different cameras with
14
15 increasing image definitions (*i.e.* number of pixels in the image).
16
17

18
19
20 In order to compare results in terms of speckle size, systematic error amplitudes are
21
22 normalised by the speckle size. Results are reported in the three plots in Figure 5, which
23
24 give the systematic error amplitude expressed in speckle size as a function of image
25
26 noise, for the three image discretisations. Note that the x and y scales of these plots are
27
28 the same. The two opposite behaviours in terms of the dependence of the bias amplitude
29
30 with respect to image noise are again clearly observed on these plots. Packages following
31
32 behaviour 1 exhibit in general a lower bias amplitude at low noise but this tendency is
33
34 rapidly reversed when image noise increases. In addition, it is observed that for images
35
36 with low image noise, or for packages following behaviour 2 at any noise level, the bias
37
38 amplitude can be significantly reduced by increasing the image definition. This reduction
39
40 is even faster than the decrease in pixel size, which means that a better pixel
41
42 discretisation leads to a reduced systematic error expressed in pixels (and not only in
43
44 speckle size). However, for images with high noise levels and for DIC softwares that
45
46 follow behaviour 1, this reduction of bias amplitude is no longer observed, because of the
47
48 strong influence of image noise for such packages. In such a situation, an increase in
49
50 image definition, does, in the best case, not lead to any improvement on bias amplitude
51
52 expressed in speckle size (which means that there is no need in using a higher definition
53
54 camera), or may even induce an increase of this amplitude. For such packages, there
55
56
57
58
59
60

1
2
3 should thus exist some optimal pixel size with respect to speckle size, which would allow
4
5 us to minimise the bias amplitude. Another implication of these observations is that it
6
7 does make sense to prefilter noisy images before processing them with a package that
8
9 follows behaviour 1, by means of a $N \times N$ binning procedure, which at the same time leads
10
11 to a reduction of the speckle size with respect to pixel size by a factor N and a reduction
12
13 of the noise level (assumed independent between adjacent pixels) by the same ratio.
14
15

16 17 **3.3 Random errors**

18
19 It has been shown in section 3.1 that several different behaviours are observed in terms of
20
21 dependence of random error with imposed displacement τ and noise level (Figure 3).
22
23

24
25 Consequently, random error is now analysed as function of noise level. More particularly,
26
27 Figures 6, 7 and 8 respectively present the evolution of the mean random error $\overline{\sigma_u}$ over
28
29 all values of τ for different speckle sizes, the mean random error $\overline{\sigma_u}$ multiplied by the
30
31 subset size d for different subset sizes, and the standard deviation σ_{σ_u} of σ_u which
32
33 quantifies the dependence of this error with τ . To facilitate the interpretation, curves are
34
35 again presented by distinguishing behaviour 1 (Figures 6a, 7a and 8a), behaviour 2
36
37 (Figures 6c, 7c and 8c) and intermediate behaviour (Figures 6b, 7b and 8b), as done in
38
39 the systematic error analysis presented in section 3.2. It is recalled that the last behaviour
40
41 corresponds to a behaviour which generally is intermediate between behaviours 1 and 2
42
43 in terms of random error evolution.
44
45
46
47
48
49

50 For all the packages, the higher the noise level, the higher the mean random error $\overline{\sigma_u}$
51
52 (Figure 6). For low noise levels, $\overline{\sigma_u}$ is globally smaller for behaviour 1 than for
53
54 behaviour 2, particularly for small speckle size ($r_0/2$). For packages related to behaviour
55
56 1, $\overline{\sigma_u}$ is weakly dependent on speckle size whatever the noise level (and particularly for
57
58
59
60

1
2
3 low noise levels), whereas for packages related to behaviour 2, the quantity $\overline{\sigma_u}$ exhibits a
4
5 more pronounced dependence with speckle size, particularly for low noise levels. For
6
7 behaviour 2, the smaller the speckle size, the higher the mean random error.
8
9

10
11
12 In order to analyse the random error dependency on subset size d , Figure 7 presents the
13
14 mean random error $\overline{\sigma_u}$ multiplied by the subset size d for the standard speckle size r_0 .
15
16 This normalisation has been chosen because, at least to first order, random error is
17
18 essentially inversely proportional to window size. For all the packages, the higher the
19
20 noise level, the higher the value of $(d\overline{\sigma_u})$, that is to say $\overline{\sigma_u}$ decreases with increasing the
21
22 subset size and increases with the noise level.
23
24

25
26
27 For packages following the behaviour 1, master curves are obtained with respect to the
28
29 subset size: for a given package the evolution corresponding to the three subset sizes are
30
31 superimposed whatever d (Figure 7a), which confirms, for such procedures, the above
32
33 mentioned proportionality of $\overline{\sigma_u}$ and $1/d$. For packages following the behaviour 2, higher
34
35 values of $(d\overline{\sigma_u})$ are observed for smaller subset sizes than for larger ones, whatever the
36
37 noise level. Finally, for packages following the intermediate behaviour, no master curve
38
39 can be extracted either in the evolution of $(d\overline{\sigma_u})$, although the dependence on the image
40
41 discretisation seems to be less pronounced than for behaviour 2.
42
43
44
45
46
47

48
49 The last analysis focuses on the dependence of the random error with the imposed
50
51 displacement τ . Figure 8 presents the evolution of the standard deviation of the random
52
53 error σ_{σ_u} versus noise level for the case corresponding to subset size $d = 16$ pixels and
54
55 standard speckle size r_0 . Figure 8a corresponding to behaviour 1 clearly shows the strong
56
57 dependence of the random error with the imposed displacement τ particularly for noisy
58
59
60

1
2
3 images. The higher the noise level, the higher the standard deviation of the random error.
4
5 This trend is a consequence of the evolution of the shape of the random error curve
6
7 presented in Figure 3 showing that for high noise levels, the random error is very large
8
9 for τ close to 0 and 1. On the contrary, σ_{σ_u} is almost independent of the noise level for
10
11 packages corresponding to behaviour 2 or intermediate behaviour, and values of σ_{σ_u} are
12
13 at least one order of magnitude below those of packages corresponding to behaviour 1.
14
15
16
17

18 19 4 COMMENTS AND CONCLUSION

20
21
22 As recalled in the introduction, random and systematic errors observed in the context of
23
24 the measurement of 2D displacement fields by means of DIC techniques have been
25
26 addressed by various authors and several strategies. The presently described investigation
27
28 is based on the analysis of synthetic images, obtained by a numerical process which
29
30 closely mimics the image generation in a real digital camera, for both the reference and
31
32 deformed images. It presents the advantage to be insensitive to image interpolation
33
34 algorithms which might be used by other methodology to translate images. The error is
35
36 also quantified exactly because the exact image shift prescribed by the numerical image
37
38 generation is known, unlike other procedures making use of experimentally recorded
39
40 images, for which this knowledge depends on the accuracy of the experimental system
41
42 with which the motion is prescribed or measured. In addition, in our procedure, the
43
44 dependency of the errors with various image parameters can be investigated separately.
45
46
47 Dependence of errors with image noise (σ_n), speckle size in pixels (r), correlation
48
49 window size (d) and ratio of correlation windows size to speckle size (d/r) have been
50
51 established. The most noticeable novelty of the presented benchmark is related to the
52
53 unprecedented wide range of DIC formulations and packages that have been tested and
54
55 compared on the same set of images.
56
57
58
59
60

1
2
3
4
5 This last aspect allows to clearly establish some generic behaviours common to all
6 packages, such as the existence of a S-shaped systematic error curve, the increase of
7 random errors with image noise and its decrease with window size (in the present context
8 of the absence of shape function mismatch error). More importantly, it allowed us to
9 establish clear differences in the behaviour of different algorithms or implementations.
10
11 The precise shape and amplitude of the systematic error curve are for instance very
12 different from one package to the other. It is however possible to gather most DIC
13 packages into two families exhibiting similar behaviours in terms of evolution of
14 systematic and random errors with respect to image noise σ_n and subpixel displacement
15 τ , as summarised from a qualitative point of view in Table 2. This separation into two
16 families has again been observed and analysed more quantitatively in section 3.2 and 3.3.
17 Family 1 for instance exhibits an almost ideal proportionality of average random errors
18 with d and an almost linear dependence of random error with σ_n , while such rules do not
19 apply for packages of family 2. On the other hand, random errors are almost insensitive
20 to subpixel displacement for family 2, while a complex dependence, which strongly
21 evolves with σ_n is observed for family 1. In terms of systematic errors, the strong
22 increase of the amplitude of the S-shaped curve for family 1 has been quantitatively
23 confirmed for all packages of this family, with similar but not identical amplitudes of
24 these errors. The quasi-independence of the systematic error amplitude with σ_n for
25 packages of family 2 is confirmed over the whole range of investigated image noise, and
26 various image definitions (*i.e.* speckle size expressed in pixels, at fixed d/r). The strong
27 influence of this last parameter on systematic errors has also been confirmed in our study:
28 a better image definition allows reducing systematic errors, but only under the condition
29 that image noise remains sufficiently low in the case of family 1. Generally speaking,
30
31
32
33
34
35
36
37
38
39
40
41
42
43
44
45
46
47
48
49
50
51
52
53
54
55
56
57
58
59
60

1
2
3 packages of the first family lead to lower error levels (both random and systematic) when
4
5 the imaging conditions are good (*i.e.* low image noise and sufficient image definition),
6
7 but packages of family 2 are much more robust to image noise.
8
9

10
11 Roughly speaking, the packages associated with the first family globally lead to better
12
13 results when the noise standard deviation is smaller than 4 GL, because of the low levels
14
15 of random errors they generate in that context. Packages of family 2 behave more
16
17 efficiently for noise levels above 8 GL, essentially because of their noticeably reduced
18
19 amplitude of systematic errors, but also their slightly reduced random error. This
20
21 behaviour of the packages of family 2 might be explained, at least qualitatively, by their
22
23 implementation, based on Fourier transforms and subpixel optimisation making use of an
24
25 interpolation of the correlation coefficient, instead of grey level interpolation used in
26
27 packages of family 1. This seems to provide the DIC packages of family 2 some noise-
28
29 filtering capacity to the detriment of larger random errors in the case of small subsets and
30
31 no image noise.
32
33
34
35
36
37

38
39 Some of the observed behaviours, especially those exhibited by family 1, have already
40
41 been reported in the literature [13, 33] and analytical models have recently been provided
42
43 for them. In particular, the perturbation analysis proposed by [13], when specialised to
44
45 pure translation, predicts a linear dependence of random errors with image noise (when
46
47 white noise is assumed as in this study). In addition, for a stationary speckle pattern and
48
49 sufficiently large window sizes, these errors evolve like $1/d$, as almost observed in our
50
51 results. Such an analysis has been extended by [33] to take into account the discrete
52
53 nature of images and the influence of grey level interpolation; the dependence of
54
55 systematic error with noise could for instance be predicted.
56
57
58
59
60

1
2
3 A quantitative comparison with these analytical models could be proposed. However,
4 such a comparison will require additional developments and will be the object of a
5 forthcoming paper. As can for instance be seen in figures 4a, 6a and 7a, the coefficients
6 governing the dependence of random errors with image noise and window size depend on
7 the packages, even though they are similar. The dependence of these coefficients with the
8 particular options used by the packages (such as type of correlation coefficient and grey
9 level interpolation routine) needs thus to be taken into account. A similar comment holds
10 if amplitude of systematic errors would have to be compared to the model proposed in
11 [33], which has been developed for a specific correlation coefficient, and for bilinear and
12 bicubic grey level interpolation. It can also be noticed that the strong dependence of
13 random errors with subpixel translation, especially for high noise level, as observed here
14 and in earlier studies [34], is not predicted by any of these models and will require
15 additional modelling efforts.
16
17
18
19
20
21
22
23
24
25
26
27
28
29
30
31
32
33

34 Let us also notice that even if the presented results are specific to a particular modelled
35 speckle pattern, the procedure could be extended to any other one, including experimental
36 ones, if an appropriate theoretical model is available, or if a way to record them at
37 sufficiently high resolution is available, in the line of [22]. Some generic information on
38 the behaviour of some DIC packages with respect to some image properties or DIC
39 parameters have also be evidenced in our study, and suggest possible ways to improve
40 DIC performances. In particular, the evolution of systematic errors with image definition
41 and image noise evidenced at the end of section 3.2, suggests that there is a way to
42 optimise image acquisition conditions with respect to these errors. For a given noise level
43 (linked to the camera) and physical size of the speckle pattern (provided for instance by
44 the natural structure of the sample), there must exist an optimal optical magnification
45 which minimises systematic errors, at least for family 1. Moreover, some pre-processing
46
47
48
49
50
51
52
53
54
55
56
57
58
59
60

1
2
3 of the images (such as pixel binning as suggested at the end of section 3.2), leading to a
4
5 reduced noise level and smoother images, might also improve results and might be tested
6
7 for a given experimental setup.
8
9

10 11 12 13 14 **Acknowledgments**

15 The authors gratefully acknowledge the French CNRS (National Centre for Scientific
16
17 Research) for supporting this research.
18
19

20 21 22 23 24 **Appendix 1: estimation of quantisation noise**

25 Let us consider the recording of images obtained by converting photons collected over a
26
27 time-range large enough to consider the conversion as a time-independent process. The
28
29 electrical charge of a given pixel, denoted x herein, can take $N_Q = w/2^b$ distinct values
30
31 inside a quantisation interval (providing the same digital value), where w is the electronic
32
33 well depth and b is the number of considered bits. N_Q is sensor dependent and is usually
34
35 at least $N_Q = 100$, so that x is considered to be continuous in the following. Furthermore,
36
37 we assume that the charge x is corrupted by thermal fluctuations as well as fluctuations of
38
39 the number of photons impinging on the considered pixel (shot-noise). Let us assume
40
41 these fluctuations are large enough to consider all charge values equally probable over
42
43 the quantisation interval. The quantisation error $\varepsilon_q(x)$ on the electrical charge is defined
44
45 as the difference between the actual charge x and its rounded value $A(x)$:
46
47
48
49
50
51
52
53
54
55

$$56 \quad \varepsilon_q(x) = x - A(x)$$

57
58
59
60

This error is periodic with a 1-quantisation step period, corresponding to 1 GL, and its variation on the interval $[-0.5 N_Q, 0.5 N_Q]$, expressed on the grey level scale, is illustrated in Figure A1.

The expectation of $\varepsilon_q(x)$ is equal to $\langle \varepsilon_q(x) \rangle$, with $\langle X \rangle$ standing for the integrated value of X over the quantisation interval, because all charge values are assumed equally probable. Using the analytical definition of $\varepsilon_q(x)$, it is immediate to see that this expectation is equal to zero. Consequently, the variance of $\varepsilon_q(x)$ is equal to $\langle \varepsilon_q^2(x) \rangle$, which can be easily calculated, and is equal to $1/12$.

The quantisation contribution to the noise corrupting a digital image is described by the distribution of $A(x)$. Its expectation is equal to:

$$\langle A(x) \rangle = \langle x \rangle - \langle \varepsilon_q(x) \rangle = \langle x \rangle$$

The variance of $A(x)$ is obtained as:

$$\langle A^2(x) \rangle = \langle x^2 \rangle - 2\langle x \varepsilon_q(x) \rangle + \langle \varepsilon_q^2(x) \rangle = \langle x^2 \rangle + \frac{1}{6}$$

using the identity: $\langle x \varepsilon_q(x) \rangle = -\frac{1}{24}$

The noise of the digitised data $A(x)$ can be defined as the standard deviation of $A(x)$, denoted here σ_A :

$$\sigma_A^2 = \langle A^2(x) \rangle - \langle A(x) \rangle^2 = \frac{1}{6} + \langle x^2 \rangle - \langle x \rangle^2 = \frac{1}{6} + \sigma_x^2$$

where $\sigma_x^2 = \langle x^2 \rangle - \langle x \rangle^2$, denotes here the variance of x .

Considering noiseless images ($\sigma_x = 0$), the standard deviation describing the noise of the digitised data reduces to the quantisation noise σ_A which is shown to be equal to

$\sigma_q = 1/\sqrt{6} \approx 0.4$ GL. For real-life images the quantisation contribution may turn

negligible so that $\sigma_A \approx \sigma_x$ since other sources of noise – depending on both the sensor

and the measured photon flux– may dominate. For instance, for σ_x greater than 2 GL, the

quantisation contribution represents less than 2% of the σ_x .

References

1. Bornert, M., Brémand, F., Doumalin, P., Dupré, J.-C., Fazzini, M., Grédiac, M., Hild, F., Mistou, S., Molimard, J., Orteu, J.-J., Robert, L., Surrel, Y., Vacher, P., Wattrisse, B. (2009) Assessment of Digital Image Correlation measurement errors: methodology and results. *Exp. Mech.* 49, 353-370.
2. Sutton, M.A., Orteu, J.-J., Schreier, H.W. (2009) Image Correlation for Shape, Motion and Deformation Measurements - Basic Concepts, Theory and Applications, Springer.
3. Pan, B., Qian, K., Xie, H., Asundi A. (2009) Two-dimensional digital image correlation for in-plane displacement and strain measurement: a review. *Meas. Sci. Technol.* 20, 062001
4. Rastogi, P.K. (2000) Photomechanics, Topics in Applied Physics Series, Vol. 77, Springer-Verlag.
5. Grédiac, M. and Hild, F. (editors) (2012) Full-Field Measurements and Identification in Solid Mechanics, Wiley-ISTE.
6. Bornert, M. (2006) Resolution and spatial resolution of Digital Image Correlation techniques,” in *Photomechanics 2006*, Clermont-Ferrand, France.
7. Dupré, J.C, Bornert, M., Robert, L., Wattrisse, B. (2010) Digital image correlation : displacement accuracy estimation. *Proc. International Conference on Experimental Mechanics (ICEM'14)*, Poitiers, France.
8. Chu, T.C., Ranson, W.F., Sutton, M.A., Peters, W.H. (1985) Applications of Digital Image-Correlation Techniques to Experimental Mechanics. *Exp. Mech.* 25, 232-244.
9. Sutton, M.A., McNeill, S.R., Jang, J., Babai, M. (1988) Effects of subpixel image restoration on digital correlation error estimates. *Opt. Eng.* 27, 870-877.
10. Choi, S. and Shah, S.P. (1997) Measurement of Deformations on Concrete Subjected to Compression Using Image Correlation. *Exp. Mech.* 37, 307-313.

- 1
2
3 11. Wang, Y. and Cuitino, A.M. (2002) Full-field measurements of heterogeneous
4 deformation patterns on polymeric foams using digital image correlation. *Int. J. Solids*
5
6 *Struct.* 39, 3777-3796.
7
8
9
10 12. Dautriat, J., Bornert, M., Gland, N., Dimanov, A., Raphanel, J. (2011) Localized
11 deformation induced by heterogeneities in porous carbonate analysed by multi-scale
12 digital image correlation. *Tectonophysics* 503, 100-116.
13
14
15 13. Roux, S. and Hild, F. (2006) Stress intensity factor measurements from digital image
16 correlation: post-processing and integrated approaches. *Int. J. Fract.* 140, 141-157.
17
18
19 14. Triconnet, K., Derrien, K., Hild, F., Baptiste, D. (2009) Parameter choice for
20 optimized digital image correlation. *Opt. Las. Eng.* 47, 728-737.
21
22
23 15. Hua, T., Xie, H., Wang, S., Hu, Z., Chen, P., Zhang, Q. (2011) Evaluation of the
24 quality of a speckle pattern in the digital image correlation method by mean subset
25 fluctuation, *Opt. Las. Technol.* 43, 9-13.
26
27
28 16. Pan, B., Lu, Z., Xie, H. (2010) Mean intensity gradient: An effective global parameter
29 for quality assessment of the speckle patterns used in digital image correlation. *Opt. Las.*
30 *Eng.* 48, 469-477.
31
32
33 17. Wattrisse, B., Chrysochoos, A., Muracciole, J.-M., Némoz-Gaillard, M. (2000)
34 Analysis of strain localization during tensile tests by digital image correlation. *Exp.*
35 *Mech.* 41, 29-39.
36
37
38 18. Lecompte, D., Smits, A., Bossuyt, S., Sol, H., Vantomme, J., Van Hemelrijck, D.,
39 Habraken, A.M. (2006) Quality assessment of speckle patterns for digital image
40 correlation. *Opt. Las. Eng.* 44, 1132-1145.
41
42
43 19. Lava, P., Cooreman, S., Coppieters, S., De Strycker, M., Debruyne, D. (2009)
44 Assessment of measuring errors in DIC using deformation fields generated by plastic
45 FEA. *Opt. Las. Eng.* 47, 747-753.
46
47
48
49
50
51
52
53
54
55
56
57
58
59
60

- 1
2
3 20. Koljonen, J. and Alander, J.T. (2008) Deformation image generation for testing a
4 strain measurement algorithm. *Opt. Eng.* 47, 107202.
5
6
7 21. Bornert, M., Doumalin, P., Dupré, J.-C., Poilâne, C., Robert, L., Toussaint, E.,
8 Wattrisse, B. (2012) Short remarks about synthetic image generation in the context of the
9 assessment of sub-pixel accuracy of Digital Image Correlation. Proc. *International*
10 *Conference on Experimental Mechanics (ICEM'15)*, Porto, Portugal.
11
12
13
14
15 22. Reu, P. (2011) Experimental and numerical methods for exact subpixel shifting.
16 *Exp. Mech.* 51, 443-452.
17
18
19 23. Schreier, H.W., Braasch, J.R., Sutton, M.A. (2000) Systematic errors in digital image
20 correlation caused by intensity interpolation. *Opt. Eng.* 39, 2915-2921.
21
22
23
24 24. Zhoun, P. and Goodson, K.E. (2001) Subpixel displacement and deformation gradient
25 measurement using digital image/speckle correlation (DISC). *Opt. Eng.* 40, 1613.
26
27
28 25. Pan, B., Xie, H.-M., Xu, B.Q., Dai, F.L. (2006) Performance of sub-pixel registration
29 algorithms in digital image correlation. *Meas. Sci. Tech.* 17, 1615-1621.
30
31
32 26. Sousa, A.M.R., Xavier, J., Vaz, M., Morais, J.J.L., Filipe, V.M.J. (2011) Cross-
33 Correlation and Differential Technique Combination to Determine Displacement Fields.
34 *Strain* 47, 87-98.
35
36
37 27. Zhang, J., Cai, Y., Ye, W., Yu, T.X. (2011) On the use of the digital image
38 correlation method for heterogeneous deformation measurement of porous solids, *Opt.*
39 *Las. Eng.*, 49(2), 200-209.
40
41
42 28. Orteu, J.-J., Garcia, D., Robert, L., Bugarin, F. (2006) A Speckle Texture Images
43 Generator. Proc. *Speckle06*, Slangen, P. and Cerruti, C., Eds, SPIE 6341.
44
45
46 29. Doumalin, P., Bornert, M., Caldemaison, D. (1999) Microextensometry by image
47 correlation applied to micromechanical studies using the scanning electron microscopy.
48 Proc. *International conference on advanced technology in experimental mechanics*, Ube
49 City, Japan, 81-86.
50
51
52
53
54
55
56
57
58
59
60

- 1
2
3 30. Schreier, H.W. and Sutton, M.A. (2002) Systematic errors in digital image correlation
4 due to undermatched subset shape function. *Exp. Mech.* 42, 303-310.
5
6
7 31. Oriat, L. and Lantz, E. (1998) Subpixel detection of the center of an object using a
8 spectral phase algorithm on the image. *Pattern Recog.* 31, 761-771.
9
10
11 32. Poilâne, C., Lantz, E., Tribillon, G., Delobelle, P. (2000) Measurement of in-plane
12 displacement fields by a spectral phase algorithm applied to numerical speckle
13 photography for microtensile test. *Eur. Phys. J. Appl. Phys.* 11, 131-145.
14
15
16 33. Wang, Y.Q., Sutton, M.A., Bruck, H.A., Schreier, H.W. (2009) Quantitative Error
17 Assessment in Pattern Matching: Effects of Intensity Pattern Noise, Interpolation, Strain
18 and Image Contrast on Motion Measurements. *Strain* 45, 160-178.
19
20
21 34. Doumalin, P. (2000) Microextensométrie locale par corrélation d'images numériques
22 – Application aux études micromécaniques par microscopie électronique à balayage, PhD
23 thesis. *Ecole Polytechnique*, 260 p. (in French).
24
25
26
27
28
29
30
31
32
33
34
35
36
37
38
39
40
41
42
43
44
45
46
47
48
49
50
51
52
53
54
55
56
57
58
59
60

List of Tables

Package	Criterion	Shape function (ϕ)	Interpolation (i)	Optimization (o)
P1	ZNCC	2 nd order	linear (l)	bi-parabolic (b)
P2	NSSD	0 order	spline quintic (q)	full (f)
P3	ZNCC	1 st order	?	full (f)
P4	SSD in spectral analysis	0 order	linear (l)	Fourier (F)
P5	NSSD	0 order	spline cubic (c)	full (f)
P6	NSSD	0 order	cubic (c)	full (f)
P7	NSSD	1 st order	?	?
P8	NCC	1 st order	cubic (c)	partial (p)
P9	ZNCC	0 order	linear (l)	partial (p)

Table 1. Various settings for the used packages (ZNCC: zero mean normalised cross-correlation, NSSD: normalised sum of squared differences, SSD: sum of squared differences, NCC: normalised cross-correlation). Question marks refer to non-documented packages.

	Behaviour 1	Behaviour 2
Systematic error	Strong dependence of amplitude with noise	Almost no dependence with noise
Random error	<p>- Dependence on σ_n</p> <p>very small error at low noise</p> <p>Similar (average) error at high noise</p> <p>- Strong dependence on τ:</p> <p>At low noise: concave shape, minimum for τ close to 0 and 1</p> <p>At high noise: convex shape, pronounced maximum for τ close to 0 and 1</p>	<p>- Less pronounced dependence on σ_n</p> <p>small error at low noise</p> <p>- Weak dependence on τ</p> <p>(whatever the noise level)</p>
Packages	P2, P5, P6, P8, P9	P1, P7

Table 2. Summary of observed behaviours. Note that packages P3 and P4 exhibit some intermediate behaviour.

List of Figures

Figure 1. Sub-images (192×192 pixels and magnified view of 32×32 pixels) of the synthetic images with three speckle sizes (fine, medium and coarse), for both cases of no noise and $\sigma_n = 16$ GL. Subsets with sizes of respectively 8, 16 and 32 pixels for respectively the fine, medium and coarse speckle size are also drawn.

Figure 2. Bias error for (a) noiseless and (b) noisy images ($\sigma_n = 16$ GL) versus imposed displacements, obtained with the different packages (speckle size $r = r_0$, subset size $d = 16$ pixels).

Figure 3. Random error for (a) noiseless and (b) noisy images ($\sigma_n = 16$ GL) versus imposed displacements, obtained with the different packages (speckle size $r = r_0$, subset size $d = 16$ pixels).

Figure 4. Systematic error amplitude $A_{\Delta u}$ as a function of noise level σ_n , for three subset sizes (square: $d = 8$ pixels, triangle: $d = 16$ pixels, diamond: $d = 32$ pixels) and standard speckle size ($r = r_0$); behaviour 1 (a), intermediate behaviour (b) and behaviour 2 (c).

Figure 5. Systematic error amplitude $A_{\Delta u}$ normalised by the speckle size as a function of noise level σ_n for 3 speckle sizes: (a) $r = r_0/2$, (b) $r = r_0$, and (c) $r = 2r_0$; subset size proportional to speckle size (*i.e.* constant d/r , with $d = 16$ pixels for $r = r_0$).

1
2
3 Figure 6. Mean random error $\overline{\sigma_u}$ as a function of noise level σ_n for 3 speckle sizes
4 (square: $r = r_0/2$, triangle: $r = r_0$, and diamond: $r = 2r_0$); subset size proportional to speckle
5 size (*i.e.* constant d/r , with $d = 16$ pixels for $r = r_0$); behaviour 1 (a), intermediate
6 behaviour (b) and behaviour 2 (c).
7
8
9
10

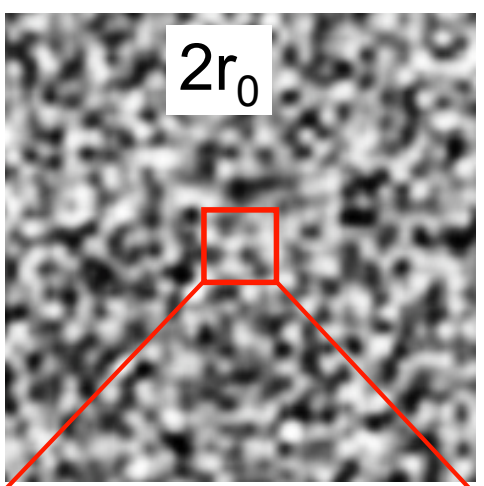
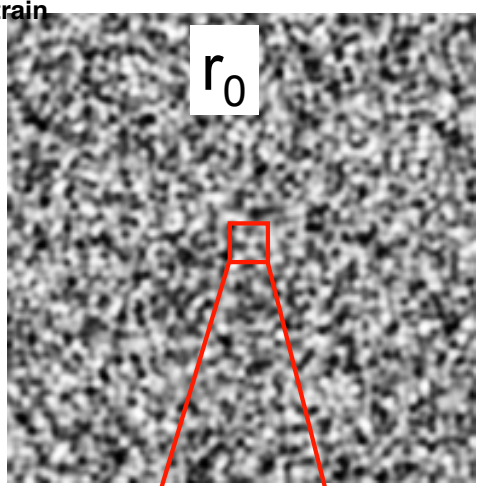
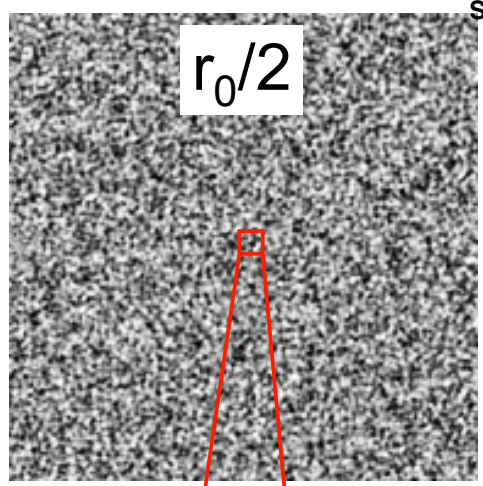
11
12
13 Figure 7. Mean random error multiplied by the subset size ($d\overline{\sigma_u}$) as a function of noise
14 level σ_n for 3 subset sizes (square: $d = 8$ pixels, triangle: $d = 16$ pixels, and diamond: $d =$
15 32 pixels); standard speckle size ($r = r_0$); behaviour 1 (a), intermediate behaviour (b) and
16 behaviour 2 (c).
17
18
19
20
21
22
23
24

25 Figure 8. Standard deviation of the random error σ_{σ_u} as a function of noise level σ_n for
26 the standard speckle size r_0 with $d = 16$ pixels; behaviour 1 (a), intermediate behaviour
27 (b) and behaviour 2 (c).
28
29
30
31
32
33

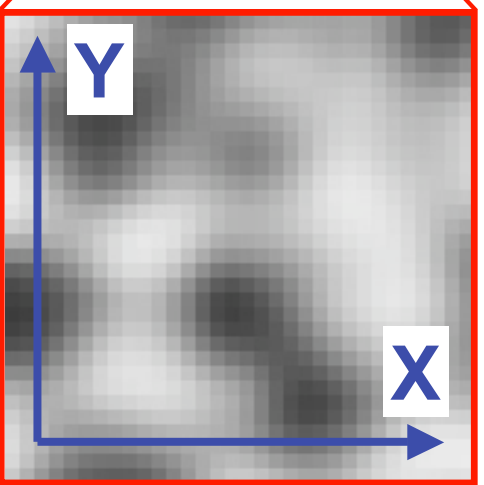
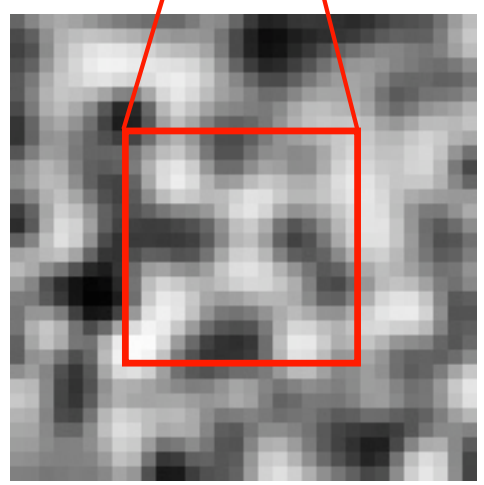
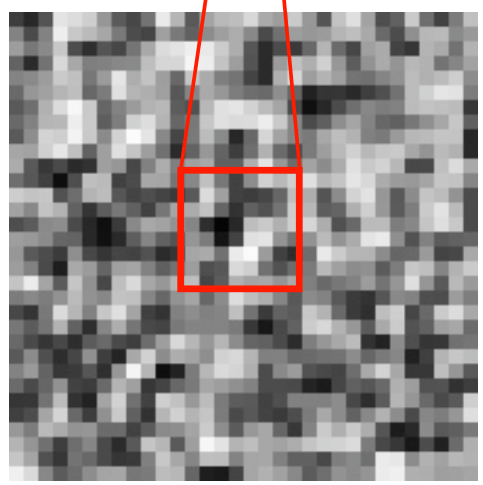
34 Figure A1. Variations of the quantisation error $\varepsilon_q(x)$ as a function of the charge x .
35
36
37
38
39
40
41
42
43
44
45
46
47
48
49
50
51
52
53
54
55
56
57
58
59
60

1
2
3
4
5
6
7
8
9
10
11
12
13
14
15
16
17
18
19
20
21
22
23
24
25
26
27
28
29
30
31
32
33
34
35
36
37
38
39
40
41
42
43
44
45
46
47

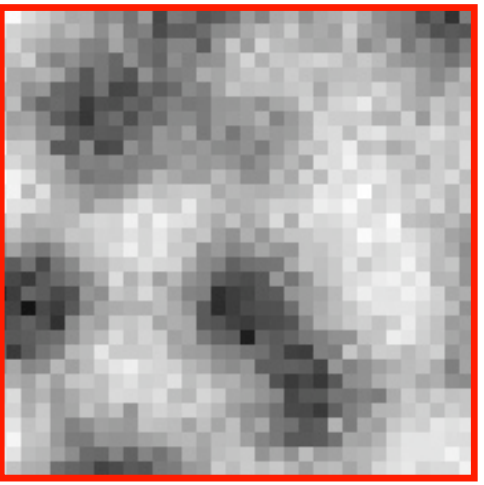
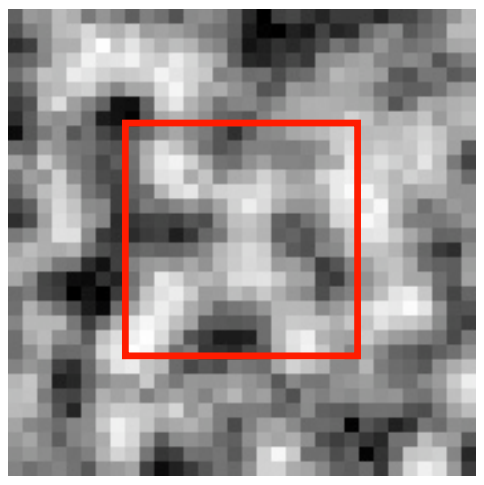
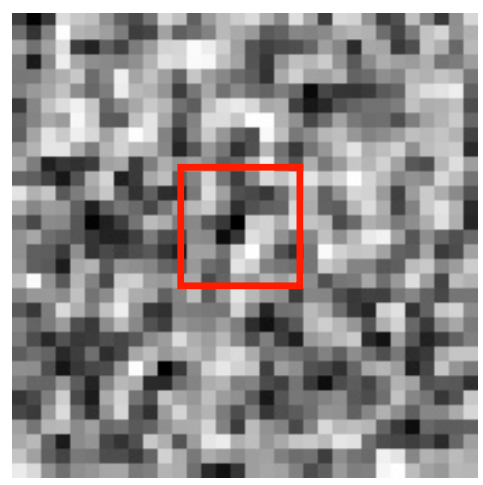
192x192 pixels
no noise



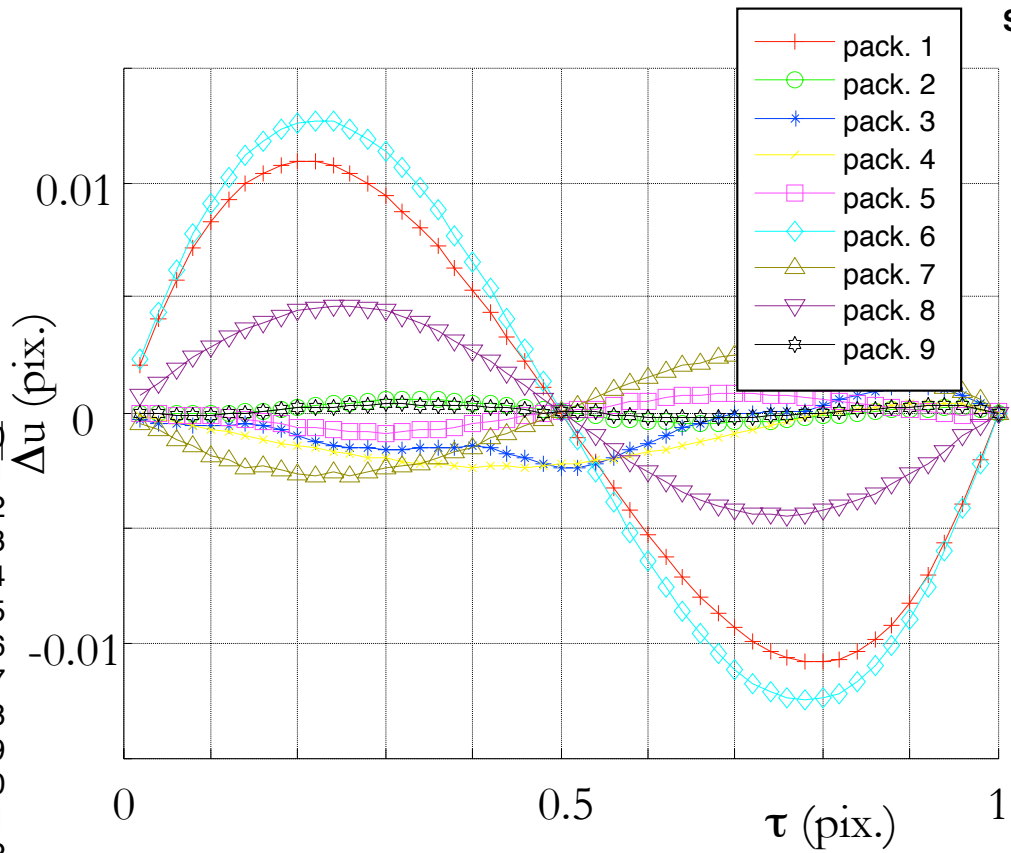
6x enlargement
32x32 pixels
no noise



6x enlargement
32x32 pixels
noise 16 GL

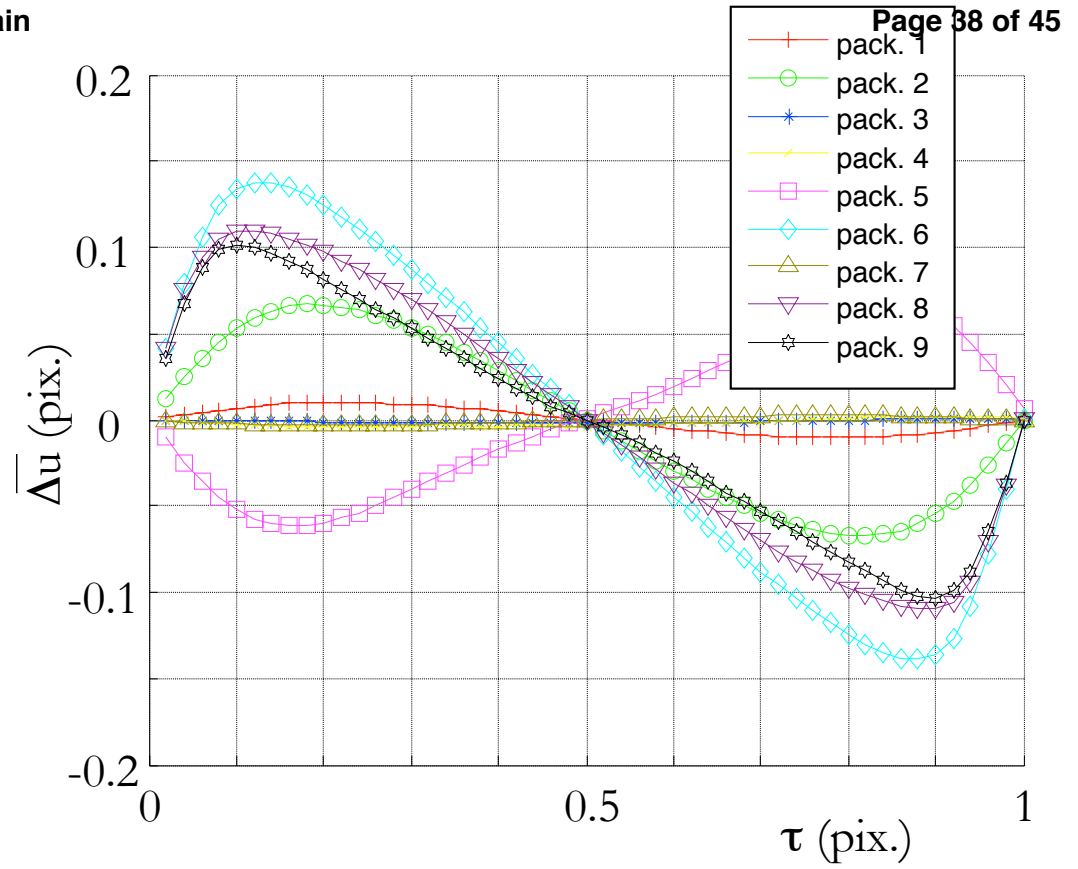


1
2
3
4
5
6
7
8
9
10
11
12
13
14
15
16
17
18
19
20
21
22
23
24
25
--

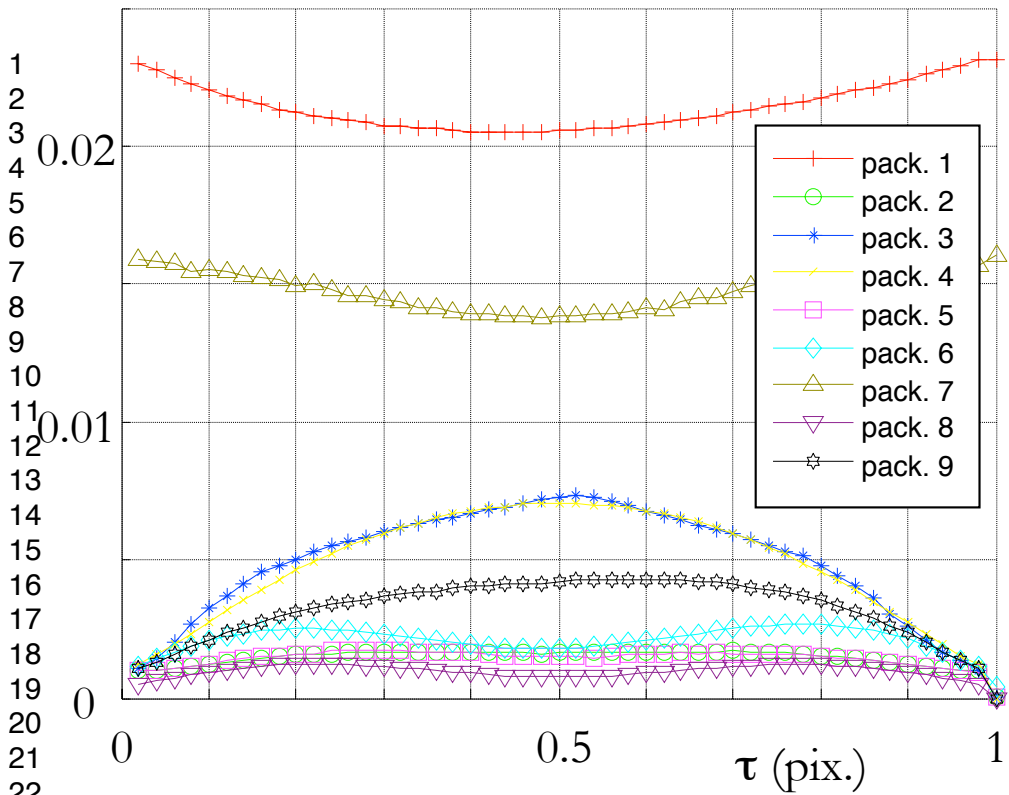


(a)

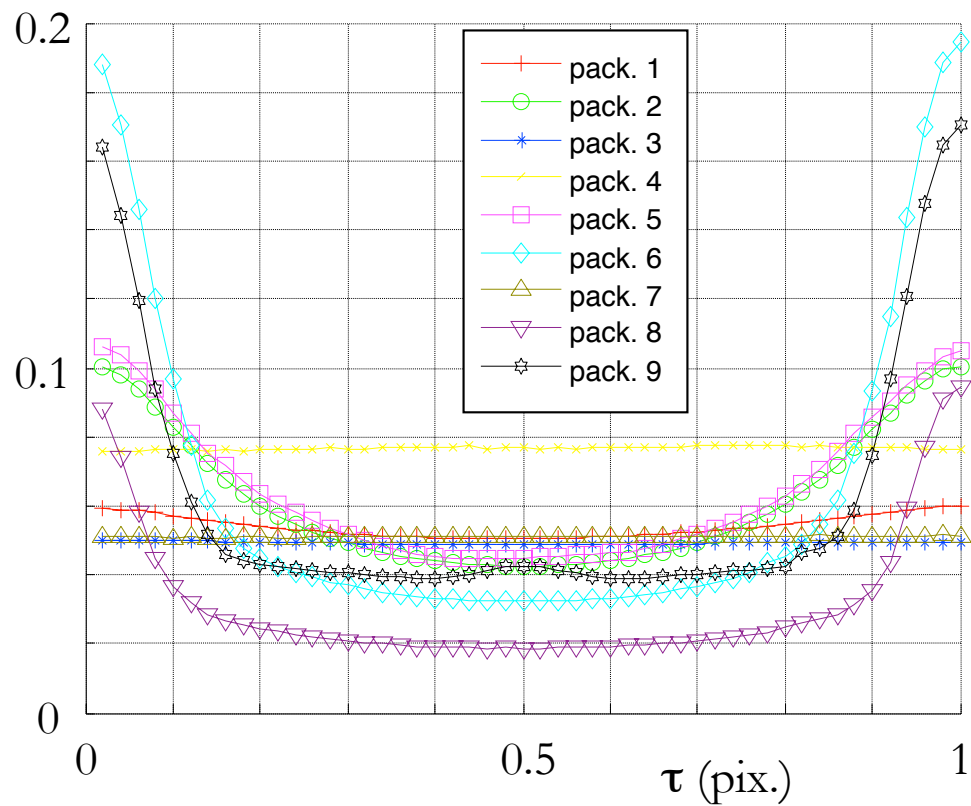
Strain



(b)



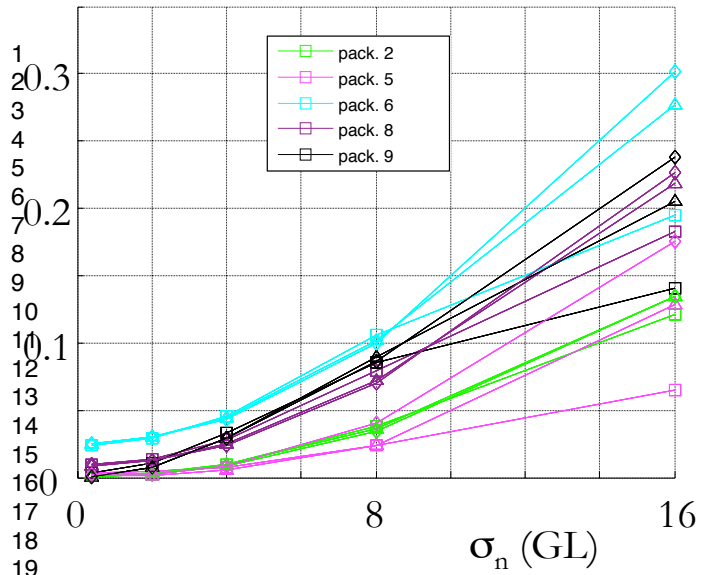
(a)



(b)

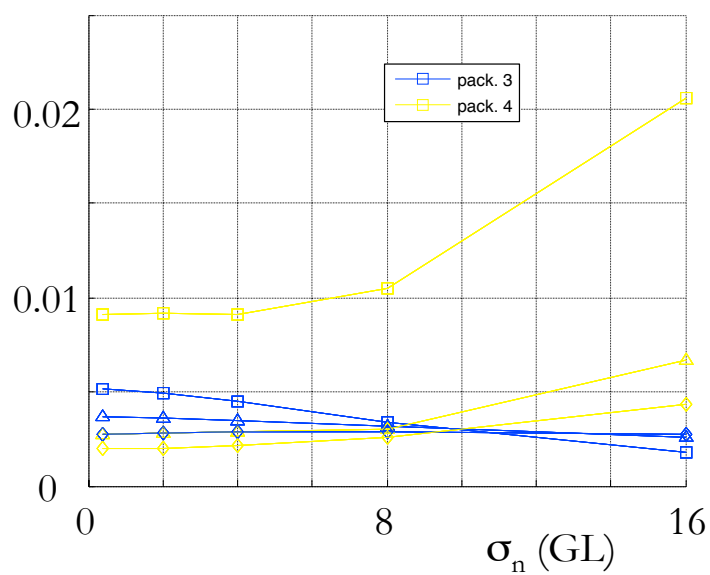
1
2
3
4
5
6
7
8
9
10
11
12
13
14
15
16
17
18
19
20
21
22
23
24
25
--

$A_{\Delta u}^-$ (pix.)



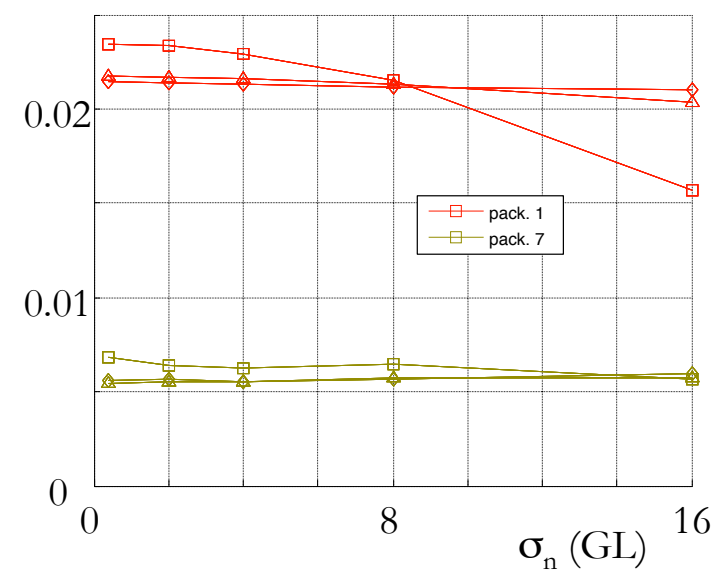
(a) Behaviour 1

$A_{\Delta u}^-$ (pix.)

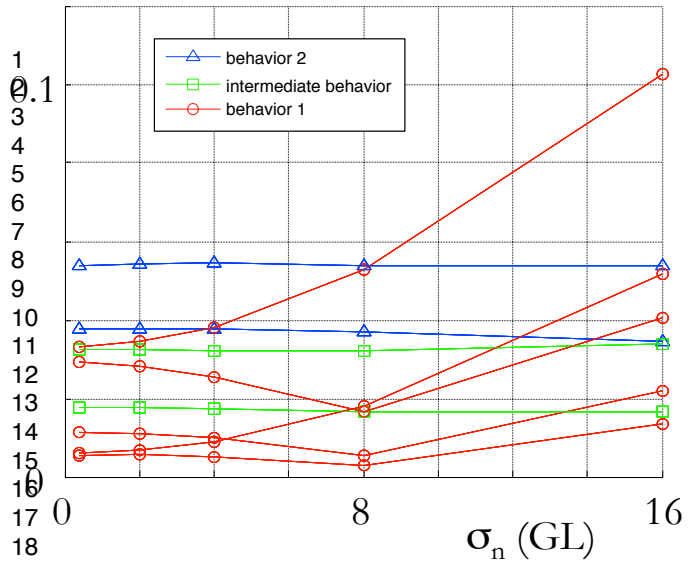


(b) Intermediate behaviour

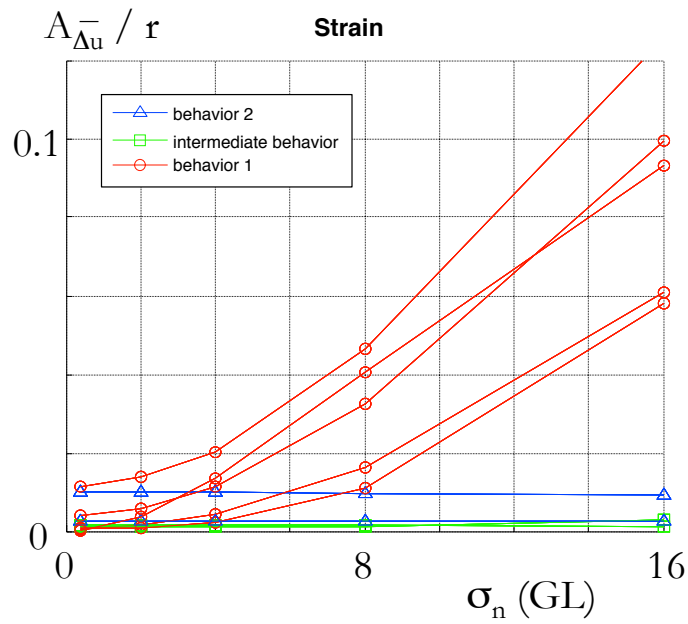
$A_{\Delta u}^-$ (pix.)



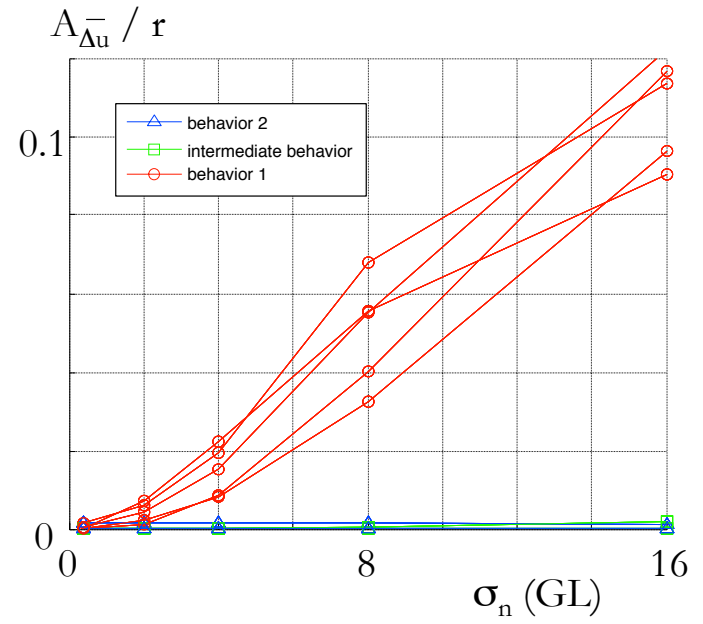
(c) Behaviour 2



(a) $r = r_0/2$

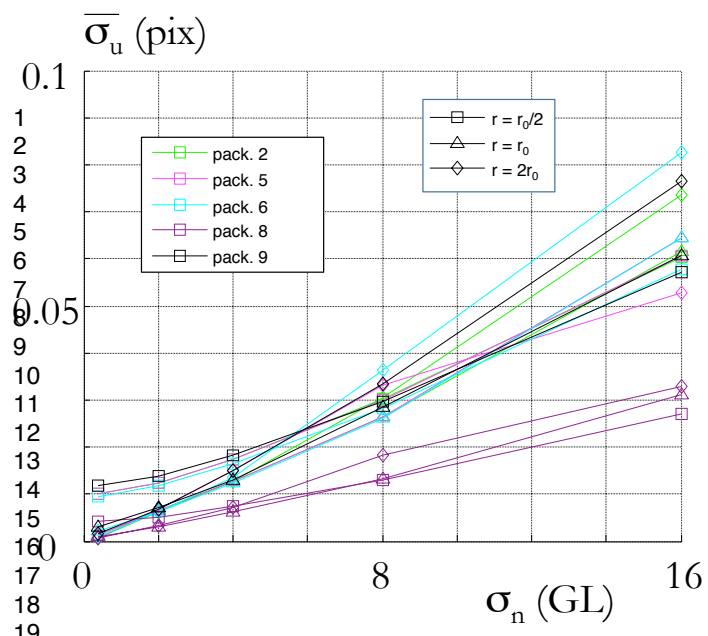


(b) $r = r_0$

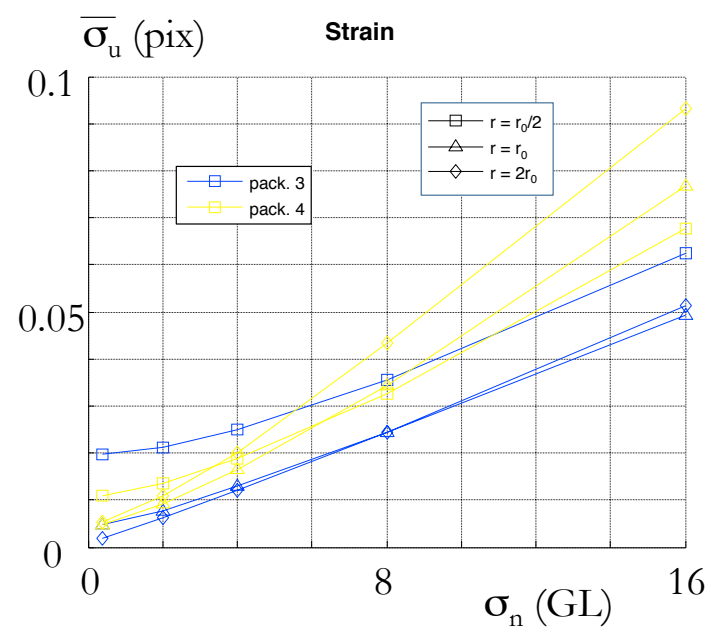


(c) $r = 2 r_0$

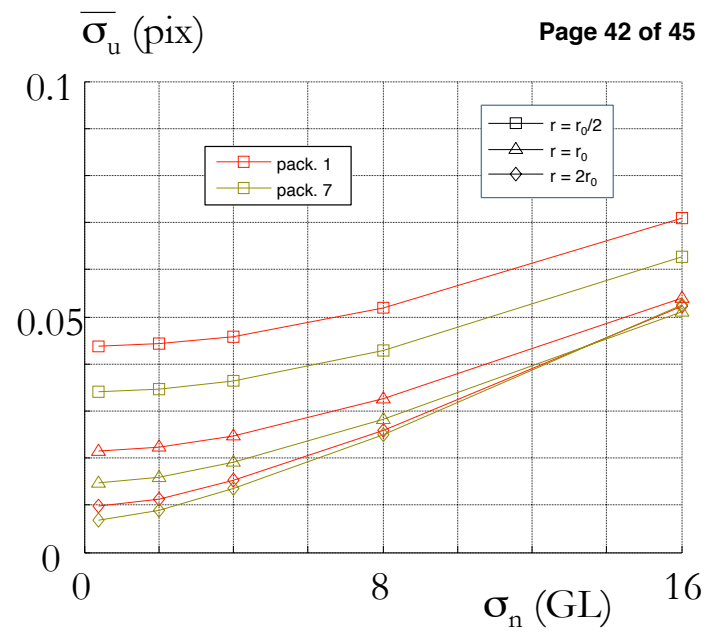
1
2
3
4
5
6
7
8
9
10
11
12
13
14
15
16
17
18
19
20
21
22



(a) Behaviour 1

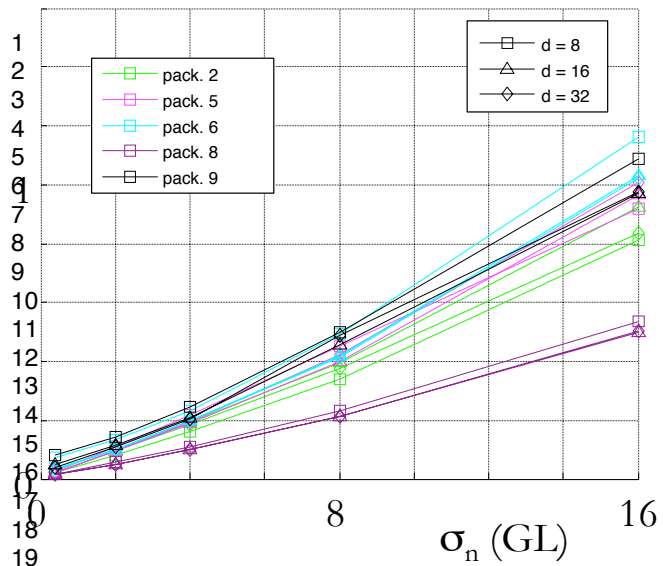


(b) Intermediate behaviour

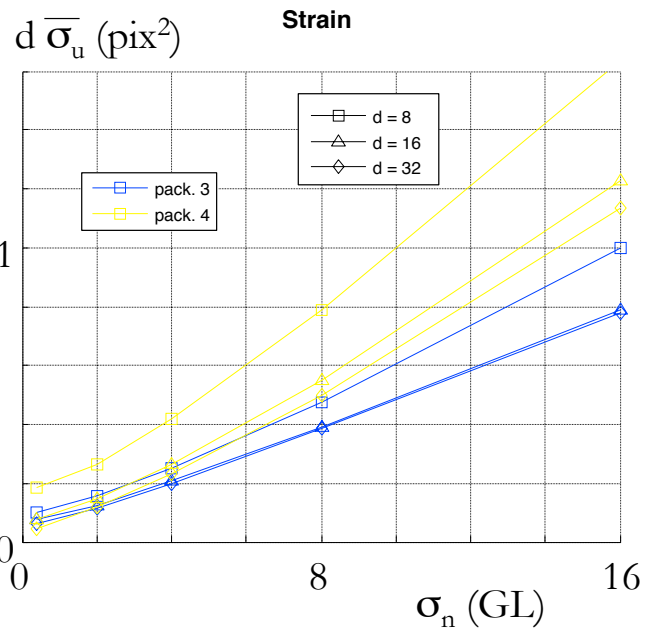


(c) Behaviour 2

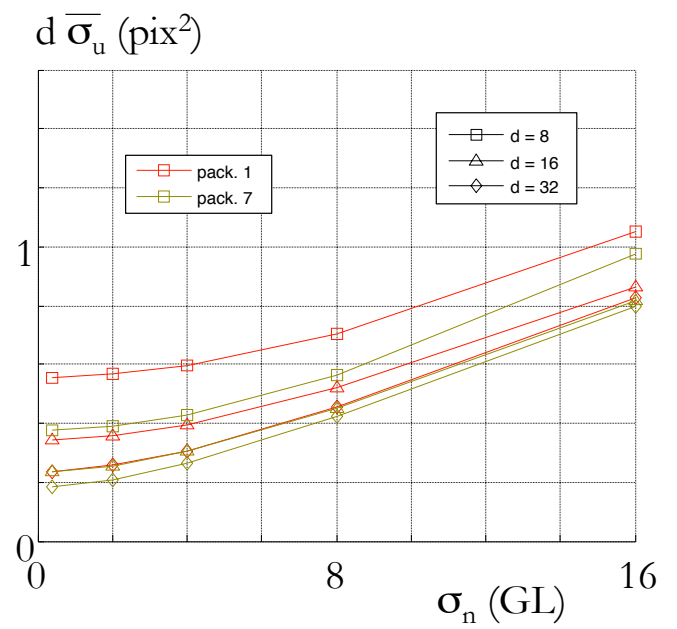
1
2
3
4
5
6
7
8
9
10
11
12
13
14
15
16
17
18
19
20
21
22



(a) Behaviour 1

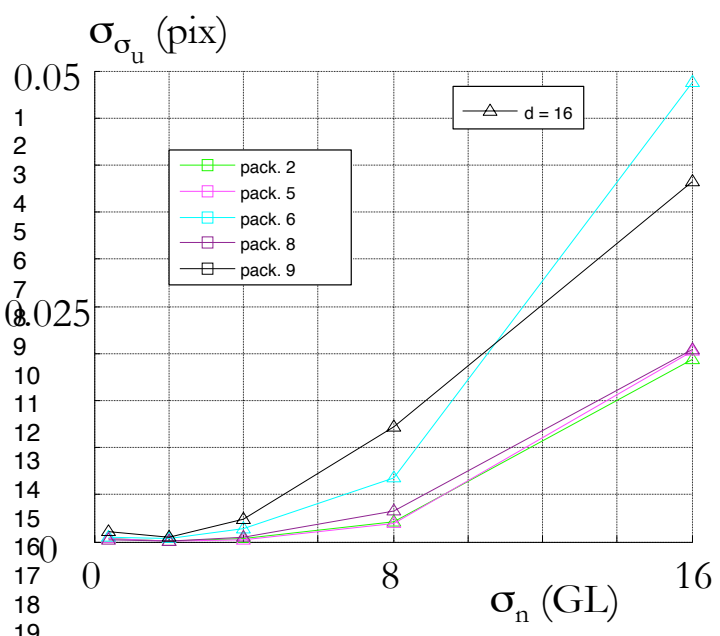


(b) Intermediate behaviour

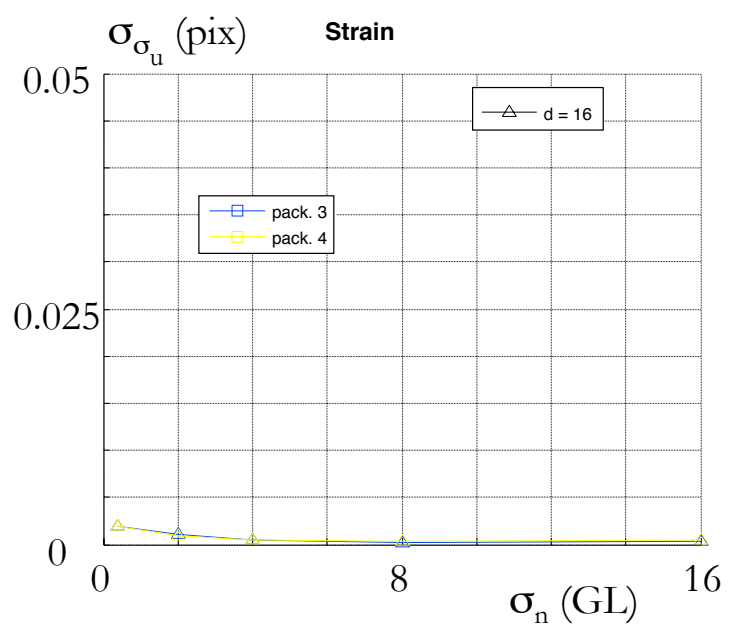


(c) Behaviour 2

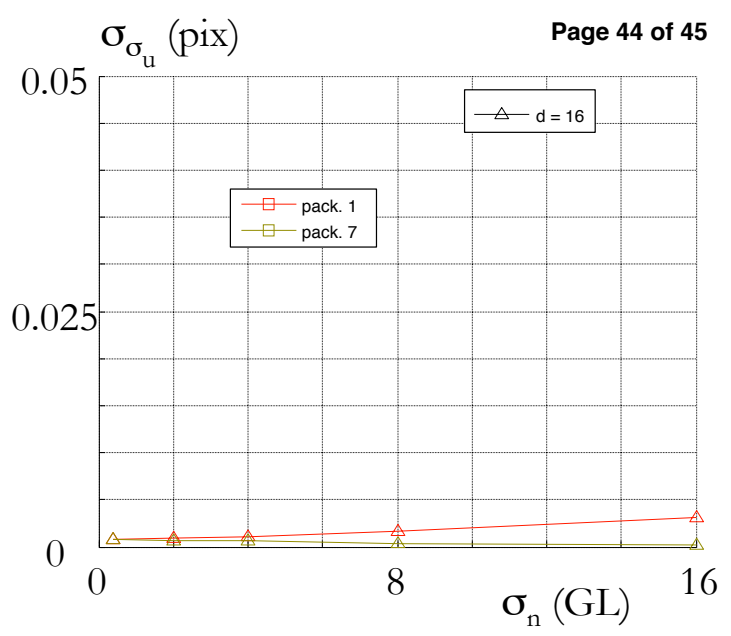
17
18
19
20
21
22



(a) Behaviour 1



(b) Intermediate behaviour



(c) Behaviour 2

1
2
3
4
5
6
7
8
9
10
11
12
13
14
15
16
17
18
19
20
21
22

