



**HAL**  
open science

## Assessment of Digital Image Correlation Measurement Accuracy in the Ultimate Error Regime: Main Results of a Collaborative Benchmark

Fabien Amiot, Michel Bornert, Pascal Doumalin, Jean-Christophe Dupré, Marina Fazzini, Jean-José Orteu, Christophe Poilâne, Laurent Robert, René Rotinat, Evelyne Toussaint, et al.

► **To cite this version:**

Fabien Amiot, Michel Bornert, Pascal Doumalin, Jean-Christophe Dupré, Marina Fazzini, et al.. Assessment of Digital Image Correlation Measurement Accuracy in the Ultimate Error Regime: Main Results of a Collaborative Benchmark. *Strain*, 2013, 49 (6), pp.483-496. 10.1111/str.12054 . hal-01069741

**HAL Id: hal-01069741**

**<https://hal.science/hal-01069741>**

Submitted on 29 Sep 2014

**HAL** is a multi-disciplinary open access archive for the deposit and dissemination of scientific research documents, whether they are published or not. The documents may come from teaching and research institutions in France or abroad, or from public or private research centers.

L'archive ouverte pluridisciplinaire **HAL**, est destinée au dépôt et à la diffusion de documents scientifiques de niveau recherche, publiés ou non, émanant des établissements d'enseignement et de recherche français ou étrangers, des laboratoires publics ou privés.



## Science Arts & Métiers (SAM)

is an open access repository that collects the work of Arts et Métiers ParisTech researchers and makes it freely available over the web where possible.

This is an author-deposited version published in: <http://sam.ensam.eu>  
Handle ID: <http://hdl.handle.net/10985/8648>

### To cite this version :

Fabien AMIOT, Michel BORNERT, Pascal DOUMALIN, Jean Christophe DUPRÉ, Marina FAZZINI, Jean José ORTEU, Christophe POILANE, Laurent ROBERT, René ROTINAT, Evelyne TOUSSAINT, Bertrand WATTRISSE, Jean Samuel WIENIN - Assessment of Digital Image Correlation Measurement Accuracy in the Ultimate Error Regime: Main Results of a Collaborative Benchmark - Assessment of Digital Image Correlation Measurement Accuracy in the Ultimate Error Regime: Main Results of a Collaborative Benchmark - Vol. 49, n°6, p.14 - 2013

Any correspondence concerning this service should be sent to the repository

Administrator : [archiveouverte@ensam.eu](mailto:archiveouverte@ensam.eu)



**Assessment of Digital Image Correlation measurement accuracy in the ultimate error regime: main results of a collaborative benchmark**

Journal:	<i>Strain</i>
Manuscript ID:	STRAIN-0863
Manuscript Type:	Full Paper
Date Submitted by the Author:	02-Mar-2013
Complete List of Authors:	Amiot, Fabien; FEMTO-ST, CNRS-UMR 6174, UFC / ENSMM / UTBM Bornert, Michel; Université Paris-Est, Laboratoire Navier (UMR 8205), CNRS, ENPC, IFSTTAR; Doumalin, Pascal; Institut P', UPR 3346 CNRS, Université de Poitiers, SP2MI Dupré, Jean-Christophe; Institut P', UPR 3346 CNRS, Université de Poitiers, SP2MI Fazzini, Marina; Université de Toulouse, INP/ENIT, LGP EA 1905 Orteu, Jean-José; Université de Toulouse, Mines Albi, ICA (Institut Clément Ader) Poilâne, Christophe; CIMAP, UMR6252, Université de Caen Basse-Normandie, CNRS, CEA, ENSICAEN; LAUM, UMR 6613, CNRS, Université du Maine ROBERT, Laurent; Université de Toulouse, Mines Albi, ICA (Institut Clément Ader) Toussaint, Evelyne; Institut Pascal, UMR6602, Université Blaise Pascal – IFMA Wattrisse, Bertrand; Université Montpellier 2, Laboratoire de Mécanique et Génie Civil, UMR CNRS 5508
Keywords:	Digital Image Correlation (DIC), Image matching, Systematic error, Random error, Synthetic images

submitted to *Strain*, March 2013

1  
2  
3  
4  
5  
6 **Assessment of Digital Image Correlation measurement**  
7  
8 **accuracy in the ultimate error regime: main results of a**  
9  
10 **collaborative benchmark**  
11  
12  
13  
14  
15  
16  
17  
18  
19  
20  
21

22 F. Amiot<sup>1</sup>, M. Bornert<sup>2</sup>, P. Doumalin<sup>3</sup>, J.-C. Dupré<sup>3</sup>, M. Fazzini<sup>4</sup>, J.-J. Orteu<sup>5</sup>, C.  
23  
24 Poilâne<sup>6,7</sup>, L. Robert<sup>5,\*</sup>, R. Rotinat<sup>8</sup>, E. Toussaint<sup>9</sup>, B. Wattrisse<sup>10</sup>, J.S. Wienin<sup>11</sup>  
25  
26  
27  
28  
29  
30

31 *On behalf of the Workgroup “Metrology” of the French CNRS research network 2519 “Mesures*  
32 *de Champs et Identification en Mécanique des Solides / Full-field measurements and*  
33 *identification in solid mechanics”. URL: <http://www.gdr2519.cnrs.fr>*  
34  
35  
36  
37  
38  
39  
40  
41  
42

43 <sup>1</sup>*FEMTO-ST, CNRS-UMR 6174, UFC / ENSMM / UTBM, Besançon, France*  
44

45  
46 <sup>2</sup>*Université Paris-Est, Laboratoire Navier (UMR 8205), CNRS, ENPC, IFSTTAR, Marne-la-*  
47 *Vallée, France*  
48  
49  
50

51 <sup>3</sup>*Institut P’, UPR 3346 CNRS, Université de Poitiers, SP2MI, Futuroscope Chasseneuil, France*  
52  
53

54 <sup>4</sup>*Université de Toulouse, INP/ENIT, LGP EA 1905, Tarbes, France*  
55  
56  
57

58  
59 

---

\*Corresponding author: Laurent Robert. Fax: +33 5 63 49 30 42, Email: [Laurent.Robert@mines-albi.fr](mailto:Laurent.Robert@mines-albi.fr)  
60

<sup>5</sup>*Université de Toulouse, Mines Albi, ICA (Institut Clément Ader), Albi, France*

<sup>6</sup>*CIMAP, UMR6252, Université de Caen Basse-Normandie, CNRS, CEA, ENSICAEN, Caen,  
France*

<sup>7</sup>*LAUM, UMR 6613, CNRS, Université du Maine, Le Mans, France*

<sup>8</sup>*LMPF, Arts et Metiers ParisTech, Châlons en Champagne, France*

<sup>9</sup>*Institut Pascal, UMR6602, Université Blaise Pascal – IFMA, Aubière, France*

<sup>10</sup>*Laboratoire de Mécanique et Génie Civil, UMR CNRS 5508, Université Montpellier 2,  
Montpellier, France*

<sup>11</sup>*École des Mines d'Alès, Alès, France*

**Running head title: Benchmark on DIC ultimate error**

**Abstract**

We report on the main results of a collaborative work devoted to the study of the uncertainties associated with Digital Image Correlation techniques (DIC). More specifically, the dependence of displacement measurement uncertainties with both image characteristics and DIC parameters are emphasised. A previous work [1] dedicated to situations with spatially fluctuating displacement fields demonstrated the existence of an “ultimate error” regime, insensitive to the mismatch between the shape function and the real displacement field. The present work is focused on this ultimate error. To ensure that there is no mismatch error, synthetic images of in-plane rigid body translation have been analysed. Several DIC softwares developed by or in use in the French community have been used to explore the effects of a large number of settings. The discrepancies between DIC evaluated displacements and prescribed ones have been statistically analysed in terms of random errors and systematic bias, in correlation with the fractional part  $\tau$  of the displacement component expressed in pixels. Main results are: (i) bias amplitude is almost always insensitive to subset size, (ii) standard deviation of random error increases with noise level and decreases with subset size and (iii) DIC formulations can be split up into two main families regarding bias sensitivity to noise. For the first one, bias amplitude increases with noise while it remains nearly constant for the second one. In addition, for the first family, a strong dependence of random error with  $\tau$  is observed for noisy images.

**Keywords**

Digital Image Correlation (DIC); Image matching; Systematic error; Random error; Synthetic images

## 1 INTRODUCTION

Digital Image Correlation (DIC) is a full-field kinematic measurement technique which has recently become one of the most standard tools in the field of experimental solid mechanics [2, 3]. Among the optical contactless full-field techniques [4, 5] including interferometric methods (e.g. speckle or grating interferometry, holography interferometry) or non-interferometric methods such as the grid method, the DIC method has become very attractive and is now commonly used for measurements of surface deformation. The rapid diffusion of this technique can mostly be explained by operability, flexibility and (apparent) ease of use in comparison with techniques that require, for instance, coherent sources of light and highly controlled optical and vibration-free environments. DIC is based on image processing, and on the assumption that the deformation of the recorded images reflects the actual mechanical transformation of the specimen. The popularity of DIC stems from the simplicity of the experimental set-up and of the specimen preparation. In case the natural contrast of the sample is not sufficient, this preparation mainly consists in a deposit of an appropriate speckle pattern (e.g. spray painting). Another reason for DIC popularity originates from its applicability to various image sources covering a large range of spatial and temporal scales, including digital cameras (combined with classical optics for macroscopic observations or optical microscopy), scanning electron microscopy, atomic force microscopy, *etc.* Digital images recorded by all these techniques can be processed by DIC algorithms to provide quantitative full-field displacement maps and, after differentiation, strain maps. Note however that for the analysis of any image provided by a 2D imaging technique, a great care should be taken to avoid, or at least to limit (or to correct when necessary) any

1  
2  
3 additional apparent deformation that could arise from out-of-plane displacements or  
4  
5 misalignments. Whenever necessary, a classical way to take account of these artefacts is  
6  
7 to use stereoscopic techniques [2].  
8  
9

10  
11 Despite its versatility and apparent ease of use, the DIC technique suffers from some  
12  
13 disadvantages in comparison with well-established techniques, such as strain gages,  
14  
15 because the measurement chain in DIC involves a large number of components, each of  
16  
17 which introducing its own set of error sources. Indeed, DIC measurement errors strongly  
18  
19 depend on: (i) the quality of the imaging system, (ii) the characteristics of the sample's  
20  
21 natural or artificially-applied speckle pattern, (iii) the DIC algorithm itself and (iv) the  
22  
23 particular choice of parameters controlling the chosen algorithm. Although a large  
24  
25 literature on DIC formulations and applications can be found, very few contributions  
26  
27 address in a systematic way their metrological performances. The collaborative work  
28  
29 carried out by the workgroup "Metrology" of CNRS research network 2519 "Full field  
30  
31 measurement and identification in solid mechanics" aims at contributing to a systematic  
32  
33 approach to this question [1, 6-7], and at proposing general procedures to assess the  
34  
35 measurement errors of DIC methods.  
36  
37  
38  
39  
40  
41  
42

43 Several approaches have been reported in the literature to evaluate measurement errors of  
44  
45 DIC methods, often in view of testing new DIC algorithms, or evaluating a particular  
46  
47 DIC method for some experimental conditions. The first natural way to evaluate  
48  
49 performances of DIC measurements is to apply them to controlled real experiments.  
50  
51 Linear or rotation stages have for instance been used to impose a set of in-plane rigid  
52  
53 body motions (translation and rotation) to the sample or the camera [8-11] or even out-of-  
54  
55 plane motions [12]. Whereas this approach takes into account all components of a  
56  
57 particular measurement chain (optics, camera, speckle pattern, lighting conditions, image  
58  
59  
60



1  
2  
3 processing, *etc.*) relative to some real experimental setup, it suffers from difficulties to  
4  
5 experimentally prescribe well-controlled displacement or strain fields, both in terms of  
6  
7 uniformity and intensity. Indeed the uniformity of a prescribed apparent translation  
8  
9 strongly depends on the alignment of the camera and on the stability of its mount. The  
10  
11 control or measurement of the displacement amplitude requires a very precise mechanical  
12  
13 setup, with a resolution at least one order of magnitude better than the one of the DIC  
14  
15 method, which is in general not available on the experimental setup under consideration.  
16  
17 In-plane rotations are even harder to prescribe and control. Out-of-plane motions generate  
18  
19 more uniform transformations, whose characteristics can be determined from the image  
20  
21 itself [12], but are limited in intensity by the depth of field and optical distortions. The set  
22  
23 of well controlled transformations is thus very limited, and, in addition, such procedures  
24  
25 do not allow to easily explore the dependence of the errors with image characteristics.  
26  
27  
28  
29  
30

31  
32 Another approach consists in taking any real image extracted from a real experiment and  
33  
34 to numerically transform it with a known displacement or strain field. The advantage of  
35  
36 this approach results from the use of an image that includes all the characteristics of the  
37  
38 speckle pattern and is thus representative of the experiment. This approach has been  
39  
40 extensively used, first to prescribe rigid body subpixel translations in order to obtain the  
41  
42 well-known S-shape bias and standard deviation curves first discussed by Sutton *et al.*  
43  
44 [9]. It has also been used to apply some arbitrary artificial deformation to images.  
45  
46 Transformation can be generated in the frequency domain by applying a Fourier filter  
47  
48 according to the shift theorem [13-16], or in the space domain by applying some image  
49  
50 interpolation methods [17-20]. However it is important to note that the interpolation  
51  
52 technique in use might induce its own set of errors, so that the conclusions about DIC-  
53  
54 related errors might be biased [21]. Indeed it has recently been shown by Reu [22] that  
55  
56 the numerical shifting of images has an impact on the quantification of the systematic  
57  
58  
59  
60

1  
2  
3 error [9, 10, 23] associated with the interpolation filter of some DIC algorithms.  
4  
5 Unfortunately, the interpolation error cannot be quantified in practice for real images.  
6  
7

8  
9 Although real images from experiments are representative, the control of their speckle  
10 characteristics (histogram, size, spectral contents, image gradients, *etc.*) can be difficult to  
11 achieve. In order to study the influence of image parameters on DIC errors, one may thus  
12 generate synthetic images and numerically shift or deform them with procedures similar  
13 to those described above. However, as discussed previously, some additional errors (even  
14 small ones) could be added by the procedure and cannot be separated from the DIC  
15 measurement errors.  
16  
17

18 To avoid adding any error in the images, it is preferable to generate reference and  
19 deformed images by means of algorithms which do not rely on any interpolation process.  
20 This can be achieved by algorithms that mimic as closely as possible the generation of  
21 images within a real camera. One way of doing so is to sample an analytic function  
22 representing a continuous physical pattern on a specimen, on a regularly spaced grid  
23 corresponding to the CCD array, with procedures that mimic the spatial signal integration  
24 of a real sensor. The transformed image is simply obtained by the sampling of the  
25 continuous transformation of the analytic function. The difficulty arises from the  
26 definition of the noise function that should produce a speckle pattern as realistic as  
27 possible. Wattrisse *et al.* [17] and Zhou and Goodson [24] have proposed to define the  
28 analytic function as a sum of individual Gaussian shaped speckles for the purpose of  
29 testing their own DIC codes. This kind of synthetic images has also been exploited for  
30 example in [16, 25-27]. Orteu *et al.* [28] have proposed an image generator based on a  
31 modified Perlin noise texture function. Such synthetic images have already been used in a  
32 previous work by the workgroup “Metrology” of CNRS research network 2519 for DIC  
33  
34  
35  
36  
37  
38  
39  
40  
41  
42  
43  
44  
45  
46  
47  
48  
49  
50  
51  
52  
53  
54  
55  
56  
57  
58  
59  
60

1  
2  
3 methods error assessments [1, 6-7]. Note that in the case only image pairs linked by some  
4  
5 particular rigid body translations or homogeneous strain fields are needed, it is possible to  
6  
7 create such artificially subpixel transformed images, without any additional interpolation  
8  
9 error, by means of a numerical binning of a ultra-high resolution image, which is either  
10  
11 synthetically generated [29] or recorded by means of a very high resolution digital  
12  
13 camera [22].  
14

15  
16  
17  
18 In most of the previously cited papers, the assessment of DIC measurement errors, based  
19  
20 on either numerical or experimental approaches, is in general performed with the purpose  
21  
22 of evaluating or testing a particular DIC code or algorithm. Thus published results are  
23  
24 highly dependent on the considered DIC implementation. For studies focused on  
25  
26 sensitivity to DIC parameters, or on sensitivity to specific DIC algorithms or software  
27  
28 implementations, results are also relative to the tested code. In this paper, nine DIC codes  
29  
30 are used in order to give this study a more generic character. The analysis is based on  
31  
32 displacement error assessment derived from the analysis of synthetic pairs of speckle  
33  
34 images. Series of synthetic reference and deformed images with random patterns have  
35  
36 been generated [28], assuming a known displacement field. Displacements are evaluated  
37  
38 by the nine following DIC packages developed by or used in the French community: Vic-  
39  
40 2D (L. Robert, ICA, Mines Albi), JH (J. Harvent / J.-J. Orteu, ICA, Mines Albi), 7D (P.  
41  
42 Vacher, SYMME, ESIA), Aramis 2D (M. Fazzini, LGP, ENIT), Correla (J.-C. Dupré / P.  
43  
44 Doumalin, PPRIME PEM, Poitiers), CMV (M. Bornert, Lab. Navier, Marne-la-Vallée),  
45  
46 Kelkins (B. Wattrisse, LMGC, Montpellier), CinEMA (J.-S. Wienin, EMA) and SPA (C.  
47  
48 Poilâne, CIMAP, Caen). These academic or commercial packages are based on a wide  
49  
50 range of DIC formulations and different implementations.  
51  
52  
53  
54  
55  
56  
57  
58  
59  
60

1  
2  
3 In a previous work [1, 6] based on (almost) the same set of correlation packages, and  
4 making use of simulated images submitted to sinusoidal displacement fields with varying  
5 spatial frequencies, it has been shown that correlation computations are associated with  
6 three main error regimes depending on the correlation formulation and the real image  
7 transformation. The first error regime, which is a known limiting situation for DIC, is for  
8 high frequency fields, for which no measurement can be performed when the period of  
9 the signal is smaller than the subset size. For lower frequencies, two error regimes can be  
10 encountered. The first one, referred to as the “mismatch error regime”, is reached when  
11 the adopted shape function does not fit the actual displacement field in the subset (see  
12 also [30]). In this regime, the error is proportional to the first order term of the  
13 discrepancy between the adopted shape function and the actual displacement field,  
14 whatever the shape function, and increases with either increasing window size or  
15 increasing speckle size. The second one, referred to as the “ultimate error regime”,  
16 corresponds to the opposite situation where the adopted shape function fits the actual  
17 displacement field accurately enough. The error then neither depends on the frequency of  
18 the signal nor on the amplitude of the displacement gradient. Consequently, it is no  
19 longer linked to the shape function mismatch. A first precise observation of this regime  
20 has shown that it is essentially governed by the same dependencies as in the case of pure  
21 translations for which the local transformation model of the subset naturally matches the  
22 real one. In particular, the RMS error increases with noise level and decreases with  
23 increasing subset size.

24  
25  
26  
27  
28  
29  
30  
31  
32  
33  
34  
35  
36  
37  
38  
39  
40  
41  
42  
43  
44  
45  
46  
47  
48  
49  
50  
51  
52 The present work is focused on this ultimate error regime; both the random errors and the  
53 so-called systematic errors [9, 10, 23] correlated with the fractional part of the  
54 displacement expressed in pixels are investigated. We propose to focus on the influence  
55 of both (i) the correlation formulations/parameters chosen by the user and/or relative to  
56  
57  
58  
59  
60

1  
2  
3 the image analysis software (essentially correlation criterion, grey level interpolation and  
4 subset size), and (ii) several image characteristics like speckle size (expressed in pixels)  
5 and image noise.  
6  
7  
8  
9

10  
11 Section 2 will be focused on the description of the adopted error assessment procedure.  
12 Results obtained with our synthetic images processed with the above mentioned nine DIC  
13 packages are thoroughly presented in section 3, both in terms of random and systematic  
14 errors. The comparison of some of the observed results to existing models available in the  
15 literature will be addressed in a subsequent paper, in which some extensions of these  
16 approaches will also be proposed.  
17  
18  
19  
20  
21  
22  
23  
24

25  
26  
27 To conclude this introduction, let us point out that the aim of this work is not to compare  
28 the relative performances of these DIC packages (which are often not used at their full  
29 capabilities), but rather to analyse the relationships between DIC formulations/parameters  
30 and DIC measurements errors and consequently to verify that results are essentially  
31 linked to underlying DIC formulations and not to specific software implementations.  
32  
33  
34  
35  
36  
37  
38

## 39 40 **2 METHODOLOGY**

### 41 42 43 **2.1 Synthetic images**

44  
45  
46 The set of synthetic reference and deformed speckle-pattern images is obtained, as in [1],  
47 using the TexGen software [28]. This software has been developed to produce synthetic  
48 speckle-pattern images which mimic as realistically as possible real DIC speckle patterns,  
49 obtained for instance with spray painting. One of the interests of this software is that any  
50 transformation can be applied to a continuous texture function assuming perfect  
51 convection of image intensity, and the integration of each pixel is performed by a super  
52  
53  
54  
55  
56  
57  
58  
59  
60

1  
2  
3 sampling technique which mimics a real image sensor. To ensure that there is no  
4  
5 mismatch error whatever the shape function adopted by the tested DIC formulations, only  
6  
7 synthetic images of plane rigid body translation have been generated. The imposed  
8  
9 displacement  $u^{imposed}$  varies from 0 to 1 pixel with a step of 0.02 pixel along the  
10  
11 horizontal direction. Speckle patterns of three mean speckle radii  $r$  have been generated ( $r$   
12  
13 =  $r_0/2$  for the fine,  $r_0$  for the medium, and  $2r_0$  for the coarse speckle with  $r_0 \approx 2.2$  pixels),  
14  
15 and uniform Gaussian white noise with four intensity levels (standard deviation  $\sigma_n = 0$ ,  
16  
17 2, 4, 8, 16 Grey Levels or GL) has been added to the pixel grey levels. Images were  
18  
19 digitised on an 8-bit grey level scale (0-255). It should be emphasised that the digitisation  
20  
21 operation generates an additional noise due to the rounding operation. Its standard  
22  
23 deviation can be evaluated, for noiseless images, to 0.4 GL (see Appendix 1 for more  
24  
25 details). Consequently, the actual noise associated with  $\sigma_n = 0$  is 0.4 GL. For  $\sigma_n \geq 2$ , the  
26  
27 digitisation contribution is less than 2% of the added noise, and thus can be neglected.  
28  
29  
30  
31  
32  
33

34 The size of the images with medium sized speckles was 1024×1024 pixels, while the  
35  
36 coarse and fine ones were respectively 512×512 and 2048×2048 pixels, so that the size of  
37  
38 the images with respect to the speckle size was constant. Figure 1 shows sub-images  
39  
40 (192×192 pixels in size) of the three speckle sizes (fine, medium and coarse) images. A  
41  
42 6-times enlargement of the sub-images (32×32 pixels windows) is also presented for  
43  
44 cases with  $\sigma_n = 0$  and  $\sigma_n = 16$  GL noise.  
45  
46  
47  
48

## 49 **2.2 DIC parameters**

50  
51  
52 The main DIC parameters of the considered packages are summarised in Table 1. The  
53  
54 various settings have been chosen among the possible options of each package. Are  
55  
56 considered, as in [1]: the order of the shape function  $\phi$  describing the local transformation  
57  
58  
59  
60

of the image (from rigid to second order,  $\phi \in \{0,1,2\}$ , knowing that it has little impact on simply translated images, see [1]), the correlation window size  $d$  chosen in this work to be 8, 16 or 32 pixels (or 9, 15 and 31 for implementation requiring odd subset sizes), the interpolation of image grey levels  $i \in \{l,c,q\}$  (linear, cubic, quintic), and the subpixel optimisation strategy  $o \in \{f,p,b,F\}$  (full, partial, bi-parabolic, Fourier), which is relative to the optimisation of the higher order ( $\geq 1$ ) shape function parameters which can be full (f) or partial (p), or refers to algorithms based on a bi-parabolic interpolation of the translation components of the shape function (b) or on an optimisation in Fourier space (F) [31-32]. Note that in case of a zero-order shape function, the optimisation algorithms work similarly for full or partial optimisation. Note also that the packages are in general not limited to the set of parameters given in table 1. These parameters have been selected in order to cover a set of DIC parameter combinations as large as possible.

### 2.3 Statistical analysis

Displacement error at the centre of a correlation window of coordinates  $(i,j)$  is obtained by:

$$\Delta u_{ij} = u_{i,j}^{measured} - u_{i,j}^{imposed} \quad (1)$$

where  $u_{i,j}^{measured}$  is the evaluation of the displacement field provided at this position by the DIC package. Note that for simplicity the error analysis is restricted to the horizontal component of the displacement.

The standard deviation  $\sigma_u$  (random error) is calculated by:

$$\sigma_u = \sqrt{\frac{n \sum_{i,j} \Delta u_{ij}^2 - \left[ \sum_{i,j} \Delta u_{ij} \right]^2}{n(n-1)}} \quad (2)$$

with  $n$  being the number of positions  $(i,j)$  where the displacement is evaluated, while the arithmetic mean (systematic error, or bias) is obtained as:

$$\overline{\Delta u} = \frac{\sum_{i,j} \Delta u_{ij}}{n} \quad (3)$$

Displacements have been evaluated at all positions of a regular square grid in the initial image, with a pitch such that correlation windows at adjacent positions do not overlap, ensuring the statistical independence of the corresponding errors. Note that the number of positions depends on the correlation window size and the image size; in the worst case (512×512 pixels images, and 32×32 pixels windows), there are 256 independent evaluations (and much more in other cases) which is sufficient for an accurate quantification of the error statistics.

It is well known that both arithmetic mean and standard deviation of errors depend periodically on the displacement amplitude with a period of one pixel [8-10, 23], as a consequence of the 1-pixel periodicity of the properties of the image discretisation process (assuming pixels on the sensor behave similarly). So, in this paper, the evolution of these errors is studied for prescribed displacements varying between 0 and 1 pixel by 0.02 pixel steps. Consequently, the prescribed displacement is equal to its fractional part, which will be noted  $\tau$  in the following.



1  
2  
3  
4  
5 The output of this investigation is thus a set of two curves giving the evolution of the  
6 random (Equation (2)) and systematic (Equation (3)) errors as a function of the subpixel  
7 displacement along the x direction of the images (see Figure 1). Note that because of the  
8 isotropy of the speckle patterns, the same curves would have been obtained with  
9 translations along the y direction. The coupled dependence of the errors on both x and y  
10 subpixel translations has been partially investigated but turned out to be weak, so that  
11 only the dependences of the errors on the displacement along x for a vanishing  
12 displacement along y have been investigated. Note also that because of the central  
13 symmetry of the statistics of the speckle patterns and the image generation procedure, a  
14 subpixel translation along x with amplitude u is equivalent to a translation along x with  
15 amplitude -u, which is itself equivalent to a translation with amplitude 1-u. As a  
16 consequence, the systematic error curves should be central-symmetric with respect to the  
17 point (0.5, 0) and the standard deviation curves symmetric with respect to the axis x =  
18 0.5. Any deviation from these symmetry properties would indicate that the set of  
19 investigated data is not sufficiently statistically representative, or be the signature of a  
20 non-symmetric behaviour of the used DIC algorithm.

21  
22  
23  
24  
25  
26  
27  
28  
29  
30  
31  
32  
33  
34  
35  
36  
37  
38  
39  
40  
41  
42  
43 The curves can also be described by some of their overall characteristics. In particular,  
44 the systematic error curve will be characterised by its amplitude,  $A_{\Delta u}$ , which is calculated  
45 by the difference between its maximum and minimum over all imposed displacements.  
46  
47  
48  
49  
50 The random error curve can be characterised by its maximum, its mean and its quadratic  
51 mean, which corresponds to the RMS of the random errors for arbitrary subpixel  
52 translation. In addition, the dependence of the random error with the fractional part  $\tau$  of  
53 the displacement can be quantified by the standard deviation of the random error curve.  
54  
55  
56  
57  
58  
59  
60

1  
2  
3 In next section, results associated with the random error are characterised in terms of its  
4  
5 mean  $\overline{\sigma_u}$  and its standard deviation  $\sigma_{\sigma_u}$  over all values of subpixel translation  $\tau$ .  
6  
7

### 8 9 **3 RESULTS**

10  
11  
12 The main results of this analysis, obtained with the 9 DIC packages listed in the  
13  
14 introduction are presented in this section. It is mostly focused on the above presented  
15  
16 systematic and random error curves, and their evolutions with image noise and other DIC  
17  
18 parameters. In a first step (section 3.1), the systematic and random errors are globally and  
19  
20 qualitatively compared for specific choices of images properties and DIC parameters.  
21  
22 This will allow us to define two main types of behaviours of the DIC packages in terms  
23  
24 of the dependence of the errors with image noise. The evolutions of the main  
25  
26 characteristics of the error curves with noise level, subset size and speckle size are then  
27  
28 more systematically and quantitatively investigated in the following two sections: the  
29  
30 evolutions of the amplitude of the systematic errors are discussed in section 3.2 while the  
31  
32 average and the standard deviation of the random error curve are considered in section  
33  
34  
35  
36  
37 3.3.  
38

#### 39 40 **3.1 Errors versus imposed displacement**

41  
42  
43 Systematic error curves obtained with the 9 packages applied on images with the medium  
44  
45 speckle size ( $r = r_0$ ) and for a subset size of 16 pixels are reported in Figure 2, while  
46  
47 random errors obtained in the same conditions are given in Figure 3. In each figure,  
48  
49 results obtained with the images without additional noise (Figures 2a and 3a) are  
50  
51 compared to those obtained with the highest noise level of  $\sigma_n = 16$  GL (Figures 2b and  
52  
53  
54  
55 3b). These results and their comparisons suggest the following comments.  
56  
57  
58  
59  
60

- 1  
2  
3  
4  
5  
6  
7  
8  
9  
10  
11  
12  
13  
14  
15  
16  
17  
18  
19  
20  
21  
22  
23  
24  
25  
26  
27  
28  
29  
30  
31  
32  
33  
34  
35  
36  
37  
38  
39  
40  
41  
42  
43  
44  
45  
46  
47  
48  
49  
50  
51  
52  
53  
54  
55  
56  
57  
58  
59  
60
- The well-known S-shape of the systematic error curve is recovered for almost all packages and for both noise levels. Curves are in general symmetric with respect to the point (0.5, 0), with the exception of package 3 and 4 applied on images without additional noise. The shape of the S-curve is in general similar to a sine curve, with maxima and minima close to  $\tau = 0.2$  and 0.8. This sine-like shape can evolve into an almost triangular-shaped curve on the noisiest images (see Figure 2b). The most noticeable case is provided by package 9 with extrema below 0.1 or above 0.9. Note that the sign of the systematic error depends on the packages but seems to remain the same for a given package when noise is added.
  - The systematic error curve and in particular its amplitude strongly depends on the package in use. This establishes that this error is strongly dependent on the DIC algorithms and their parameters. The amplitude of the systematic errors can vary by a factor of more than 10 between two different packages applied on the same images. Note that this observation is not linked to the performances of the implementations of the various packages but on the algorithms and the particular options which have been selected to run them. Indeed, a same package run with different DIC options can lead to very different systematic error curves. At the higher noise level, several packages exhibit similar systematic error curves, but significant differences with other packages are still observed.
  - More precisely, a detailed analysis of the evolution of the systematic error curves with noise shows that two very different behaviours are observed. On the one hand, some packages used with the parameter combination given in table 1, namely P2, P5, P6, P8 and P9, exhibit a strong dependence of the amplitude with noise. The amplitude is for instance multiplied by 9 when noise is added for P5

1  
2  
3 and almost 100 for P9. On the other hand, there are packages for which the  
4  
5 systematic error seems to be almost independent on noise level. This is the case of  
6  
7 P1 and P7. For these packages and for low noise images, the systematic error is  
8  
9 larger than the one exhibited by some of the packages of the first set, but is  
10  
11 definitively lower for noisy images.  
12  
13  
14

- 15  
16 - Concerning the random error, it is observed that it increases systematically with  
17  
18 increasing image noise level. This is expected as DIC algorithms can be  
19  
20 considered as filters that operate on images as input and produce displacement  
21  
22 fields as output; noisy input naturally generates noisy output. Note that random  
23  
24 noise is not null at  $\sigma_n = 0$ , as a consequence of both quantisation error (see  
25  
26 Appendix 1), and discretisation of images. However, random error levels can be  
27  
28 very different from one package to the other, especially at low noise levels, for  
29  
30 which ratios of 1 to 10 on random errors can be observed. At higher noise,  
31  
32 discrepancies are less pronounced.  
33  
34  
35  
36  
37  
38 - A significant difference is observed between packages on the shape of the random  
39  
40 error curve as well as on its evolution with noise (see Figure 3). Again, two main  
41  
42 behaviours can be defined. The first behaviour consists in a random error level  
43  
44 almost independent on  $\tau$ , for both noise levels, and in a moderate evolution of this  
45  
46 almost constant random error with  $\sigma_n$ . Surprisingly, this behaviour coincides with  
47  
48 the absence of dependence of the systematic error with noise (as observed  
49  
50 previously), and is observed for packages P1 and P7. This behaviour is also  
51  
52 observed for packages P3 and P4. All other packages, which coincide with those  
53  
54 exhibiting a strong dependence of the systematic error with noise, *i.e.* P2, P5, P6,  
55  
56  
57  
58  
59  
60

1  
2  
3 P8 and P9, follow another behaviour characterised by a random error dependent  
4  
5 on  $\tau$ , and a strong evolution of the shape of this curve with noise. More precisely,  
6  
7 for low noise level, the random error is very low for  $\tau$  close to 0 and 1, while it  
8  
9 gets very large for the same values of  $\tau$  for high noise levels.  
10

11  
12  
13  
14 Table 2 summarises the two typical behaviours observed and the packages that follow  
15  
16 them. Note that packages P3 and P4 exhibit some intermediate behaviour.  
17

### 18 19 20 **3.2 Systematic errors**

21  
22 Let us now focus on the amplitude of the systematic error  $A_{\Delta u}$ , given in Figure 4 as a  
23  
24 function of the standard deviation of the image noise  $\sigma_n$  for three subset sizes ( $d = 8, 16$   
25  
26 and 32 pixels), and for the intermediate speckle size ( $r = r_0$ ). Results are split into 3 plots  
27  
28 illustrating the observed behaviours: Figure 4a corresponds to behaviour 1 with a strong  
29  
30 nonlinear increase of the amplitude with noise level; Figure 4c illustrates behaviour 2  
31  
32 with almost no dependence with noise level. Figure 4b provides results relative to the  
33  
34 packages exhibiting some intermediate behaviour. It can be noticed that this error  
35  
36 amplitude does in general not depend on the subset size, with the exception of package  
37  
38 P4 and, to a limited extent, of package P1, as well as all packages following behaviour 1  
39  
40 at high noise levels. Most packages exhibit a bias amplitude below 0.01 pixel at low  
41  
42 noise levels, the maximal amplitude being 0.025 pixel (package P1). At larger noise  
43  
44 levels (typically 4 GL on the 256 available levels), the systematic error can be much  
45  
46 larger and becomes a serious limitation of packages following behaviour 1.  
47  
48  
49  
50  
51  
52  
53

54 As systematic errors are induced by interpolation procedures aiming at restoring  
55  
56 continuous grey levels (or correlation coefficients) from discrete pixel values, it does  
57  
58  
59  
60

1  
2  
3 make sense to explore the influence of image resolution with respect to speckle size.

4  
5 With this purpose, we compare results obtained with several subsets with a same ratio  $d/r$ ,  
6  
7 but different pixel samplings. Three situations are considered: low ( $r = r_0/2$  with  $d = 8$   
8  
9 pixels), standard ( $r = r_0$  and  $d = 16$  pixels) and fine ( $d = 32$  pixels with  $r = 2r_0$ ) spatial  
10  
11 image discretisation. This comparison corresponds to the practical situation of the  
12  
13 imaging of the same region of interest of a same sample with three different cameras with  
14  
15 increasing image definitions (*i.e.* number of pixels in the image).  
16  
17

18  
19  
20 In order to compare results in terms of speckle size, systematic error amplitudes are  
21  
22 normalised by the speckle size. Results are reported in the three plots in Figure 5, which  
23  
24 give the systematic error amplitude expressed in speckle size as a function of image  
25  
26 noise, for the three image discretisations. Note that the x and y scales of these plots are  
27  
28 the same. The two opposite behaviours in terms of the dependence of the bias amplitude  
29  
30 with respect to image noise are again clearly observed on these plots. Packages following  
31  
32 behaviour 1 exhibit in general a lower bias amplitude at low noise but this tendency is  
33  
34 rapidly reversed when image noise increases. In addition, it is observed that for images  
35  
36 with low image noise, or for packages following behaviour 2 at any noise level, the bias  
37  
38 amplitude can be significantly reduced by increasing the image definition. This reduction  
39  
40 is even faster than the decrease in pixel size, which means that a better pixel  
41  
42 discretisation leads to a reduced systematic error expressed in pixels (and not only in  
43  
44 speckle size). However, for images with high noise levels and for DIC softwares that  
45  
46 follow behaviour 1, this reduction of bias amplitude is no longer observed, because of the  
47  
48 strong influence of image noise for such packages. In such a situation, an increase in  
49  
50 image definition, does, in the best case, not lead to any improvement on bias amplitude  
51  
52 expressed in speckle size (which means that there is no need in using a higher definition  
53  
54 camera), or may even induce an increase of this amplitude. For such packages, there  
55  
56  
57  
58  
59  
60

1  
2  
3 should thus exist some optimal pixel size with respect to speckle size, which would allow  
4  
5 us to minimise the bias amplitude. Another implication of these observations is that it  
6  
7 does make sense to prefilter noisy images before processing them with a package that  
8  
9 follows behaviour 1, by means of a  $N \times N$  binning procedure, which at the same time leads  
10  
11 to a reduction of the speckle size with respect to pixel size by a factor  $N$  and a reduction  
12  
13 of the noise level (assumed independent between adjacent pixels) by the same ratio.  
14  
15

### 16 17 **3.3 Random errors**

18  
19 It has been shown in section 3.1 that several different behaviours are observed in terms of  
20  
21 dependence of random error with imposed displacement  $\tau$  and noise level (Figure 3).  
22  
23

24  
25 Consequently, random error is now analysed as function of noise level. More particularly,  
26  
27 Figures 6, 7 and 8 respectively present the evolution of the mean random error  $\overline{\sigma_u}$  over  
28  
29 all values of  $\tau$  for different speckle sizes, the mean random error  $\overline{\sigma_u}$  multiplied by the  
30  
31 subset size  $d$  for different subset sizes, and the standard deviation  $\sigma_{\sigma_u}$  of  $\sigma_u$  which  
32  
33 quantifies the dependence of this error with  $\tau$ . To facilitate the interpretation, curves are  
34  
35 again presented by distinguishing behaviour 1 (Figures 6a, 7a and 8a), behaviour 2  
36  
37 (Figures 6c, 7c and 8c) and intermediate behaviour (Figures 6b, 7b and 8b), as done in  
38  
39 the systematic error analysis presented in section 3.2. It is recalled that the last behaviour  
40  
41 corresponds to a behaviour which generally is intermediate between behaviours 1 and 2  
42  
43 in terms of random error evolution.  
44  
45  
46  
47  
48  
49

50 For all the packages, the higher the noise level, the higher the mean random error  $\overline{\sigma_u}$   
51  
52 (Figure 6). For low noise levels,  $\overline{\sigma_u}$  is globally smaller for behaviour 1 than for  
53  
54 behaviour 2, particularly for small speckle size ( $r_0/2$ ). For packages related to behaviour  
55  
56 1,  $\overline{\sigma_u}$  is weakly dependent on speckle size whatever the noise level (and particularly for  
57  
58  
59  
60

1  
2  
3 low noise levels), whereas for packages related to behaviour 2, the quantity  $\overline{\sigma_u}$  exhibits a  
4  
5 more pronounced dependence with speckle size, particularly for low noise levels. For  
6  
7 behaviour 2, the smaller the speckle size, the higher the mean random error.  
8  
9

10  
11  
12 In order to analyse the random error dependency on subset size  $d$ , Figure 7 presents the  
13  
14 mean random error  $\overline{\sigma_u}$  multiplied by the subset size  $d$  for the standard speckle size  $r_0$ .  
15  
16 This normalisation has been chosen because, at least to first order, random error is  
17  
18 essentially inversely proportional to window size. For all the packages, the higher the  
19  
20 noise level, the higher the value of  $(d\overline{\sigma_u})$ , that is to say  $\overline{\sigma_u}$  decreases with increasing the  
21  
22 subset size and increases with the noise level.  
23  
24

25  
26  
27 For packages following the behaviour 1, master curves are obtained with respect to the  
28  
29 subset size: for a given package the evolution corresponding to the three subset sizes are  
30  
31 superimposed whatever  $d$  (Figure 7a), which confirms, for such procedures, the above  
32  
33 mentioned proportionality of  $\overline{\sigma_u}$  and  $1/d$ . For packages following the behaviour 2, higher  
34  
35 values of  $(d\overline{\sigma_u})$  are observed for smaller subset sizes than for larger ones, whatever the  
36  
37 noise level. Finally, for packages following the intermediate behaviour, no master curve  
38  
39 can be extracted either in the evolution of  $(d\overline{\sigma_u})$ , although the dependence on the image  
40  
41 discretisation seems to be less pronounced than for behaviour 2.  
42  
43  
44  
45  
46  
47

48  
49 The last analysis focuses on the dependence of the random error with the imposed  
50  
51 displacement  $\tau$ . Figure 8 presents the evolution of the standard deviation of the random  
52  
53 error  $\sigma_{\sigma_u}$  versus noise level for the case corresponding to subset size  $d = 16$  pixels and  
54  
55 standard speckle size  $r_0$ . Figure 8a corresponding to behaviour 1 clearly shows the strong  
56  
57 dependence of the random error with the imposed displacement  $\tau$  particularly for noisy  
58  
59  
60



1  
2  
3 images. The higher the noise level, the higher the standard deviation of the random error.  
4  
5 This trend is a consequence of the evolution of the shape of the random error curve  
6  
7 presented in Figure 3 showing that for high noise levels, the random error is very large  
8  
9 for  $\tau$  close to 0 and 1. On the contrary,  $\sigma_{\sigma_u}$  is almost independent of the noise level for  
10  
11 packages corresponding to behaviour 2 or intermediate behaviour, and values of  $\sigma_{\sigma_u}$  are  
12  
13 at least one order of magnitude below those of packages corresponding to behaviour 1.  
14  
15  
16  
17

#### 18 19 4 COMMENTS AND CONCLUSION

20  
21  
22 As recalled in the introduction, random and systematic errors observed in the context of  
23  
24 the measurement of 2D displacement fields by means of DIC techniques have been  
25  
26 addressed by various authors and several strategies. The presently described investigation  
27  
28 is based on the analysis of synthetic images, obtained by a numerical process which  
29  
30 closely mimics the image generation in a real digital camera, for both the reference and  
31  
32 deformed images. It presents the advantage to be insensitive to image interpolation  
33  
34 algorithms which might be used by other methodology to translate images. The error is  
35  
36 also quantified exactly because the exact image shift prescribed by the numerical image  
37  
38 generation is known, unlike other procedures making use of experimentally recorded  
39  
40 images, for which this knowledge depends on the accuracy of the experimental system  
41  
42 with which the motion is prescribed or measured. In addition, in our procedure, the  
43  
44 dependency of the errors with various image parameters can be investigated separately.  
45  
46  
47 Dependence of errors with image noise ( $\sigma_n$ ), speckle size in pixels ( $r$ ), correlation  
48  
49 window size ( $d$ ) and ratio of correlation windows size to speckle size ( $d/r$ ) have been  
50  
51 established. The most noticeable novelty of the presented benchmark is related to the  
52  
53 unprecedented wide range of DIC formulations and packages that have been tested and  
54  
55 compared on the same set of images.  
56  
57  
58  
59  
60

1  
2  
3  
4  
5 This last aspect allows to clearly establish some generic behaviours common to all  
6 packages, such as the existence of a S-shaped systematic error curve, the increase of  
7 random errors with image noise and its decrease with window size (in the present context  
8 of the absence of shape function mismatch error). More importantly, it allowed us to  
9 establish clear differences in the behaviour of different algorithms or implementations.  
10  
11 The precise shape and amplitude of the systematic error curve are for instance very  
12 different from one package to the other. It is however possible to gather most DIC  
13 packages into two families exhibiting similar behaviours in terms of evolution of  
14 systematic and random errors with respect to image noise  $\sigma_n$  and subpixel displacement  
15  $\tau$ , as summarised from a qualitative point of view in Table 2. This separation into two  
16 families has again been observed and analysed more quantitatively in section 3.2 and 3.3.  
17 Family 1 for instance exhibits an almost ideal proportionality of average random errors  
18 with  $d$  and an almost linear dependence of random error with  $\sigma_n$ , while such rules do not  
19 apply for packages of family 2. On the other hand, random errors are almost insensitive  
20 to subpixel displacement for family 2, while a complex dependence, which strongly  
21 evolves with  $\sigma_n$  is observed for family 1. In terms of systematic errors, the strong  
22 increase of the amplitude of the S-shaped curve for family 1 has been quantitatively  
23 confirmed for all packages of this family, with similar but not identical amplitudes of  
24 these errors. The quasi-independence of the systematic error amplitude with  $\sigma_n$  for  
25 packages of family 2 is confirmed over the whole range of investigated image noise, and  
26 various image definitions (*i.e.* speckle size expressed in pixels, at fixed  $d/r$ ). The strong  
27 influence of this last parameter on systematic errors has also been confirmed in our study:  
28 a better image definition allows reducing systematic errors, but only under the condition  
29 that image noise remains sufficiently low in the case of family 1. Generally speaking,  
30  
31  
32  
33  
34  
35  
36  
37  
38  
39  
40  
41  
42  
43  
44  
45  
46  
47  
48  
49  
50  
51  
52  
53  
54  
55  
56  
57  
58  
59  
60

1  
2  
3 packages of the first family lead to lower error levels (both random and systematic) when  
4  
5 the imaging conditions are good (*i.e.* low image noise and sufficient image definition),  
6  
7 but packages of family 2 are much more robust to image noise.  
8  
9

10  
11 Roughly speaking, the packages associated with the first family globally lead to better  
12  
13 results when the noise standard deviation is smaller than 4 GL, because of the low levels  
14  
15 of random errors they generate in that context. Packages of family 2 behave more  
16  
17 efficiently for noise levels above 8 GL, essentially because of their noticeably reduced  
18  
19 amplitude of systematic errors, but also their slightly reduced random error. This  
20  
21 behaviour of the packages of family 2 might be explained, at least qualitatively, by their  
22  
23 implementation, based on Fourier transforms and subpixel optimisation making use of an  
24  
25 interpolation of the correlation coefficient, instead of grey level interpolation used in  
26  
27 packages of family 1. This seems to provide the DIC packages of family 2 some noise-  
28  
29 filtering capacity to the detriment of larger random errors in the case of small subsets and  
30  
31 no image noise.  
32  
33  
34  
35  
36  
37

38  
39 Some of the observed behaviours, especially those exhibited by family 1, have already  
40  
41 been reported in the literature [13, 33] and analytical models have recently been provided  
42  
43 for them. In particular, the perturbation analysis proposed by [13], when specialised to  
44  
45 pure translation, predicts a linear dependence of random errors with image noise (when  
46  
47 white noise is assumed as in this study). In addition, for a stationary speckle pattern and  
48  
49 sufficiently large window sizes, these errors evolve like  $1/d$ , as almost observed in our  
50  
51 results. Such an analysis has been extended by [33] to take into account the discrete  
52  
53 nature of images and the influence of grey level interpolation; the dependence of  
54  
55 systematic error with noise could for instance be predicted.  
56  
57  
58  
59  
60

1  
2  
3 A quantitative comparison with these analytical models could be proposed. However,  
4  
5 such a comparison will require additional developments and will be the object of a  
6  
7 forthcoming paper. As can for instance be seen in figures 4a, 6a and 7a, the coefficients  
8  
9 governing the dependence of random errors with image noise and window size depend on  
10  
11 the packages, even though they are similar. The dependence of these coefficients with the  
12  
13 particular options used by the packages (such as type of correlation coefficient and grey  
14  
15 level interpolation routine) needs thus to be taken into account. A similar comment holds  
16  
17 if amplitude of systematic errors would have to be compared to the model proposed in  
18  
19 [33], which has been developed for a specific correlation coefficient, and for bilinear and  
20  
21 bicubic grey level interpolation. It can also be noticed that the strong dependence of  
22  
23 random errors with subpixel translation, especially for high noise level, as observed here  
24  
25 and in earlier studies [34], is not predicted by any of these models and will require  
26  
27 additional modelling efforts.  
28  
29  
30  
31  
32  
33

34 Let us also notice that even if the presented results are specific to a particular modelled  
35  
36 speckle pattern, the procedure could be extended to any other one, including experimental  
37  
38 ones, if an appropriate theoretical model is available, or if a way to record them at  
39  
40 sufficiently high resolution is available, in the line of [22]. Some generic information on  
41  
42 the behaviour of some DIC packages with respect to some image properties or DIC  
43  
44 parameters have also be evidenced in our study, and suggest possible ways to improve  
45  
46 DIC performances. In particular, the evolution of systematic errors with image definition  
47  
48 and image noise evidenced at the end of section 3.2, suggests that there is a way to  
49  
50 optimise image acquisition conditions with respect to these errors. For a given noise level  
51  
52 (linked to the camera) and physical size of the speckle pattern (provided for instance by  
53  
54 the natural structure of the sample), there must exist an optimal optical magnification  
55  
56 which minimises systematic errors, at least for family 1. Moreover, some pre-processing  
57  
58  
59  
60

1  
2  
3 of the images (such as pixel binning as suggested at the end of section 3.2), leading to a  
4  
5 reduced noise level and smoother images, might also improve results and might be tested  
6  
7 for a given experimental setup.  
8  
9

### 10 11 12 13 14 **Acknowledgments**

15 The authors gratefully acknowledge the French CNRS (National Centre for Scientific  
16  
17 Research) for supporting this research.  
18  
19  
20  
21  
22  
23

### 24 25 **Appendix 1: estimation of quantisation noise**

26  
27  
28 Let us consider the recording of images obtained by converting photons collected over a  
29  
30 time-range large enough to consider the conversion as a time-independent process. The  
31  
32 electrical charge of a given pixel, denoted  $x$  herein, can take  $N_Q = w/2^b$  distinct values  
33  
34 inside a quantisation interval (providing the same digital value), where  $w$  is the electronic  
35  
36 well depth and  $b$  is the number of considered bits.  $N_Q$  is sensor dependent and is usually  
37  
38 at least  $N_Q = 100$ , so that  $x$  is considered to be continuous in the following. Furthermore,  
39  
40 we assume that the charge  $x$  is corrupted by thermal fluctuations as well as fluctuations of  
41  
42 the number of photons impinging on the considered pixel (shot-noise). Let us assume  
43  
44 these fluctuations are large enough to consider all charge values equally probable over  
45  
46 the quantisation interval. The quantisation error  $\varepsilon_q(x)$  on the electrical charge is defined  
47  
48 as the difference between the actual charge  $x$  and its rounded value  $A(x)$ :  
49  
50  
51  
52  
53  
54  
55

$$56 \quad \varepsilon_q(x) = x - A(x)$$

57  
58  
59  
60

This error is periodic with a 1-quantisation step period, corresponding to 1 GL, and its variation on the interval  $[-0.5 N_Q, 0.5 N_Q]$ , expressed on the grey level scale, is illustrated in Figure A1.

The expectation of  $\varepsilon_q(x)$  is equal to  $\langle \varepsilon_q(x) \rangle$ , with  $\langle X \rangle$  standing for the integrated value of  $X$  over the quantisation interval, because all charge values are assumed equally probable. Using the analytical definition of  $\varepsilon_q(x)$ , it is immediate to see that this expectation is equal to zero. Consequently, the variance of  $\varepsilon_q(x)$  is equal to  $\langle \varepsilon_q^2(x) \rangle$ , which can be easily calculated, and is equal to  $1/12$ .

The quantisation contribution to the noise corrupting a digital image is described by the distribution of  $A(x)$ . Its expectation is equal to:

$$\langle A(x) \rangle = \langle x \rangle - \langle \varepsilon_q(x) \rangle = \langle x \rangle$$

The variance of  $A(x)$  is obtained as:

$$\langle A^2(x) \rangle = \langle x^2 \rangle - 2\langle x \varepsilon_q(x) \rangle + \langle \varepsilon_q^2(x) \rangle = \langle x^2 \rangle + \frac{1}{6}$$

using the identity:  $\langle x \varepsilon_q(x) \rangle = -\frac{1}{24}$

The noise of the digitised data  $A(x)$  can be defined as the standard deviation of  $A(x)$ , denoted here  $\sigma_A$ :

$$\sigma_A^2 = \langle A^2(x) \rangle - \langle A(x) \rangle^2 = \frac{1}{6} + \langle x^2 \rangle - \langle x \rangle^2 = \frac{1}{6} + \sigma_x^2$$

where  $\sigma_x^2 = \langle x^2 \rangle - \langle x \rangle^2$ , denotes here the variance of  $x$ .

Considering noiseless images ( $\sigma_x = 0$ ), the standard deviation describing the noise of the digitised data reduces to the quantisation noise  $\sigma_A$  which is shown to be equal to

$\sigma_q = 1/\sqrt{6} \approx 0.4$  GL. For real-life images the quantisation contribution may turn

negligible so that  $\sigma_A \approx \sigma_x$  since other sources of noise – depending on both the sensor

and the measured photon flux– may dominate. For instance, for  $\sigma_x$  greater than 2 GL, the

quantisation contribution represents less than 2% of the  $\sigma_x$ .

**References**

1. Bornert, M., Brémand, F., Doumalin, P., Dupré, J.-C., Fazzini, M., Grédiac, M., Hild, F., Mistou, S., Molimard, J., Orteu, J.-J., Robert, L., Surrel, Y., Vacher, P., Wattrisse, B. (2009) Assessment of Digital Image Correlation measurement errors: methodology and results. *Exp. Mech.* 49, 353-370.
2. Sutton, M.A., Orteu, J.-J., Schreier, H.W. (2009) Image Correlation for Shape, Motion and Deformation Measurements - Basic Concepts, Theory and Applications, Springer.
3. Pan, B., Qian, K., Xie, H., Asundi A. (2009) Two-dimensional digital image correlation for in-plane displacement and strain measurement: a review. *Meas. Sci. Technol.* 20, 062001
4. Rastogi, P.K. (2000) Photomechanics, Topics in Applied Physics Series, Vol. 77, Springer-Verlag.
5. Grédiac, M. and Hild, F. (editors) (2012) Full-Field Measurements and Identification in Solid Mechanics, Wiley-ISTE.
6. Bornert, M. (2006) Resolution and spatial resolution of Digital Image Correlation techniques,” in *Photomechanics 2006*, Clermont-Ferrand, France.
7. Dupré, J.C, Bornert, M., Robert, L., Wattrisse, B. (2010) Digital image correlation : displacement accuracy estimation. *Proc. International Conference on Experimental Mechanics (ICEM'14)*, Poitiers, France.
8. Chu, T.C., Ranson, W.F., Sutton, M.A., Peters, W.H. (1985) Applications of Digital Image-Correlation Techniques to Experimental Mechanics. *Exp. Mech.* 25, 232-244.
9. Sutton, M.A., McNeill, S.R., Jang, J., Babai, M. (1988) Effects of subpixel image restoration on digital correlation error estimates. *Opt. Eng.* 27, 870-877.
10. Choi, S. and Shah, S.P. (1997) Measurement of Deformations on Concrete Subjected to Compression Using Image Correlation. *Exp. Mech.* 37, 307-313.



- 1  
2  
3 11. Wang, Y. and Cuitino, A.M. (2002) Full-field measurements of heterogeneous  
4 deformation patterns on polymeric foams using digital image correlation. *Int. J. Solids*  
5  
6 *Struct.* 39, 3777-3796.  
7  
8  
9  
10 12. Dautriat, J., Bornert, M., Gland, N., Dimanov, A., Raphanel, J. (2011) Localized  
11 deformation induced by heterogeneities in porous carbonate analysed by multi-scale  
12 digital image correlation. *Tectonophysics* 503, 100-116.  
13  
14  
15 13. Roux, S. and Hild, F. (2006) Stress intensity factor measurements from digital image  
16 correlation: post-processing and integrated approaches. *Int. J. Fract.* 140, 141-157.  
17  
18  
19 14. Triconnet, K., Derrien, K., Hild, F., Baptiste, D. (2009) Parameter choice for  
20 optimized digital image correlation. *Opt. Las. Eng.* 47, 728-737.  
21  
22  
23 15. Hua, T., Xie, H., Wang, S., Hu, Z., Chen, P., Zhang, Q. (2011) Evaluation of the  
24 quality of a speckle pattern in the digital image correlation method by mean subset  
25 fluctuation, *Opt. Las. Technol.* 43, 9-13.  
26  
27  
28 16. Pan, B., Lu, Z., Xie, H. (2010) Mean intensity gradient: An effective global parameter  
29 for quality assessment of the speckle patterns used in digital image correlation. *Opt. Las.*  
30 *Eng.* 48, 469-477.  
31  
32  
33 17. Wattrisse, B., Chrysochoos, A., Muracciole, J.-M., Némoz-Gaillard, M. (2000)  
34 Analysis of strain localization during tensile tests by digital image correlation. *Exp.*  
35 *Mech.* 41, 29-39.  
36  
37  
38 18. Lecompte, D., Smits, A., Bossuyt, S., Sol, H., Vantomme, J., Van Hemelrijck, D.,  
39 Habraken, A.M. (2006) Quality assessment of speckle patterns for digital image  
40 correlation. *Opt. Las. Eng.* 44, 1132-1145.  
41  
42  
43 19. Lava, P., Cooreman, S., Coppieters, S., De Strycker, M., Debruyne, D. (2009)  
44 Assessment of measuring errors in DIC using deformation fields generated by plastic  
45 FEA. *Opt. Las. Eng.* 47, 747-753.  
46  
47  
48  
49  
50  
51  
52  
53  
54  
55  
56  
57  
58  
59  
60

- 1  
2  
3 20. Koljonen, J. and Alander, J.T. (2008) Deformation image generation for testing a  
4 strain measurement algorithm. *Opt. Eng.* 47, 107202.  
5  
6  
7 21. Bornert, M., Doumalin, P., Dupré, J.-C., Poilâne, C., Robert, L., Toussaint, E.,  
8 Wattrisse, B. (2012) Short remarks about synthetic image generation in the context of the  
9 assessment of sub-pixel accuracy of Digital Image Correlation. Proc. *International*  
10 *Conference on Experimental Mechanics (ICEM'15)*, Porto, Portugal.  
11  
12  
13  
14  
15 22. Reu, P. (2011) Experimental and numerical methods for exact subpixel shifting.  
16 *Exp. Mech.* 51, 443-452.  
17  
18  
19 23. Schreier, H.W., Braasch, J.R., Sutton, M.A. (2000) Systematic errors in digital image  
20 correlation caused by intensity interpolation. *Opt. Eng.* 39, 2915-2921.  
21  
22  
23  
24 24. Zhoun, P. and Goodson, K.E. (2001) Subpixel displacement and deformation gradient  
25 measurement using digital image/speckle correlation (DISC). *Opt. Eng.* 40, 1613.  
26  
27  
28 25. Pan, B., Xie, H.-M., Xu, B.Q., Dai, F.L. (2006) Performance of sub-pixel registration  
29 algorithms in digital image correlation. *Meas. Sci. Tech.* 17, 1615-1621.  
30  
31  
32 26. Sousa, A.M.R., Xavier, J., Vaz, M., Morais, J.J.L., Filipe, V.M.J. (2011) Cross-  
33 Correlation and Differential Technique Combination to Determine Displacement Fields.  
34 *Strain* 47, 87-98.  
35  
36  
37 27. Zhang, J., Cai, Y., Ye, W., Yu, T.X. (2011) On the use of the digital image  
38 correlation method for heterogeneous deformation measurement of porous solids, *Opt.*  
39 *Las. Eng.*, 49(2), 200-209.  
40  
41  
42 28. Orteu, J.-J., Garcia, D., Robert, L., Bugarin, F. (2006) A Speckle Texture Images  
43 Generator. Proc. *Speckle06*, Slangen, P. and Cerruti, C., Eds, SPIE 6341.  
44  
45  
46 29. Doumalin, P., Bornert, M., Caldemaison, D. (1999) Microextensometry by image  
47 correlation applied to micromechanical studies using the scanning electron microscopy.  
48 Proc. *International conference on advanced technology in experimental mechanics*, Ube  
49 City, Japan, 81-86.  
50  
51  
52  
53  
54  
55  
56  
57  
58  
59  
60

- 1  
2  
3 30. Schreier, H.W. and Sutton, M.A. (2002) Systematic errors in digital image correlation  
4 due to undermatched subset shape function. *Exp. Mech.* 42, 303-310.  
5  
6  
7 31. Oriat, L. and Lantz, E. (1998) Subpixel detection of the center of an object using a  
8 spectral phase algorithm on the image. *Pattern Recog.* 31, 761-771.  
9  
10  
11 32. Poilâne, C., Lantz, E., Tribillon, G., Delobelle, P. (2000) Measurement of in-plane  
12 displacement fields by a spectral phase algorithm applied to numerical speckle  
13 photography for microtensile test. *Eur. Phys. J. Appl. Phys.* 11, 131-145.  
14  
15  
16 33. Wang, Y.Q., Sutton, M.A., Bruck, H.A., Schreier, H.W. (2009) Quantitative Error  
17 Assessment in Pattern Matching: Effects of Intensity Pattern Noise, Interpolation, Strain  
18 and Image Contrast on Motion Measurements. *Strain* 45, 160-178.  
19  
20  
21 34. Doumalin, P. (2000) Microextensométrie locale par corrélation d'images numériques  
22 – Application aux études micromécaniques par microscopie électronique à balayage, PhD  
23 thesis. *Ecole Polytechnique*, 260 p. (in French).  
24  
25  
26  
27  
28  
29  
30  
31  
32  
33  
34  
35  
36  
37  
38  
39  
40  
41  
42  
43  
44  
45  
46  
47  
48  
49  
50  
51  
52  
53  
54  
55  
56  
57  
58  
59  
60

## List of Tables

Package	Criterion	Shape function ( $\phi$ )	Interpolation ( $i$ )	Optimization ( $o$ )
P1	ZNCC	2 <sup>nd</sup> order	linear (l)	bi-parabolic (b)
P2	NSSD	0 order	spline quintic (q)	full (f)
P3	ZNCC	1 <sup>st</sup> order	?	full (f)
P4	SSD in spectral analysis	0 order	linear (l)	Fourier (F)
P5	NSSD	0 order	spline cubic (c)	full (f)
P6	NSSD	0 order	cubic (c)	full (f)
P7	NSSD	1 <sup>st</sup> order	?	?
P8	NCC	1 <sup>st</sup> order	cubic (c)	partial (p)
P9	ZNCC	0 order	linear (l)	partial (p)

Table 1. Various settings for the used packages (ZNCC: zero mean normalised cross-correlation, NSSD: normalised sum of squared differences, SSD: sum of squared differences, NCC: normalised cross-correlation). Question marks refer to non-documented packages.

	Behaviour 1	Behaviour 2
Systematic error	Strong dependence of amplitude with noise	Almost no dependence with noise
Random error	<p>- Dependence on <math>\sigma_n</math></p> <p>very small error at low noise</p> <p>Similar (average) error at high noise</p> <p>- Strong dependence on <math>\tau</math>:</p> <p>At low noise: concave shape, minimum for <math>\tau</math> close to 0 and 1</p> <p>At high noise: convex shape, pronounced maximum for <math>\tau</math> close to 0 and 1</p>	<p>- Less pronounced dependence on <math>\sigma_n</math></p> <p>small error at low noise</p> <p>- Weak dependence on <math>\tau</math></p> <p>(whatever the noise level)</p>
Packages	P2, P5, P6, P8, P9	P1, P7

Table 2. Summary of observed behaviours. Note that packages P3 and P4 exhibit some intermediate behaviour.

## List of Figures

Figure 1. Sub-images (192×192 pixels and magnified view of 32×32 pixels) of the synthetic images with three speckle sizes (fine, medium and coarse), for both cases of no noise and  $\sigma_n = 16$  GL. Subsets with sizes of respectively 8, 16 and 32 pixels for respectively the fine, medium and coarse speckle size are also drawn.

Figure 2. Bias error for (a) noiseless and (b) noisy images ( $\sigma_n = 16$  GL) versus imposed displacements, obtained with the different packages (speckle size  $r = r_0$ , subset size  $d = 16$  pixels).

Figure 3. Random error for (a) noiseless and (b) noisy images ( $\sigma_n = 16$  GL) versus imposed displacements, obtained with the different packages (speckle size  $r = r_0$ , subset size  $d = 16$  pixels).

Figure 4. Systematic error amplitude  $A_{\Delta u}$  as a function of noise level  $\sigma_n$ , for three subset sizes (square:  $d = 8$  pixels, triangle:  $d = 16$  pixels, diamond:  $d = 32$  pixels) and standard speckle size ( $r = r_0$ ); behaviour 1 (a), intermediate behaviour (b) and behaviour 2 (c).

Figure 5. Systematic error amplitude  $A_{\Delta u}$  normalised by the speckle size as a function of noise level  $\sigma_n$  for 3 speckle sizes: (a)  $r = r_0/2$ , (b)  $r = r_0$ , and (c)  $r = 2r_0$ ; subset size proportional to speckle size (*i.e.* constant  $d/r$ , with  $d = 16$  pixels for  $r = r_0$ ).

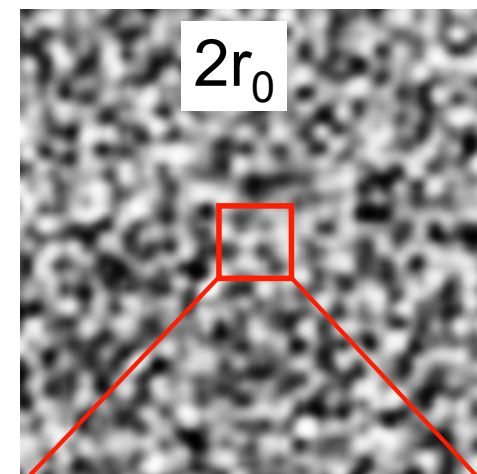
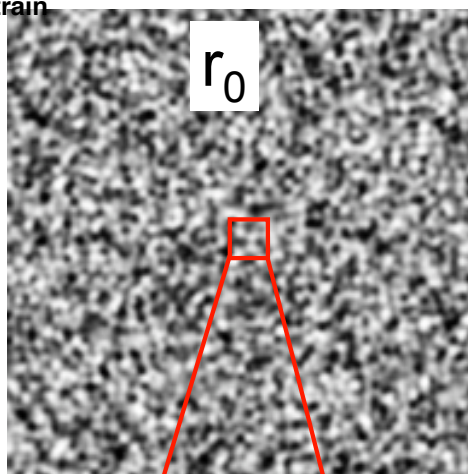
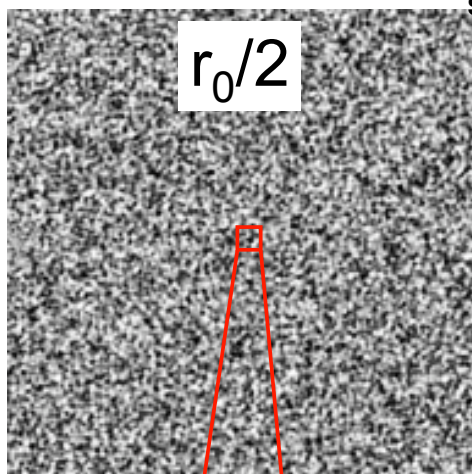
1  
2  
3 Figure 6. Mean random error  $\overline{\sigma_u}$  as a function of noise level  $\sigma_n$  for 3 speckle sizes  
4 (square:  $r = r_0/2$ , triangle:  $r = r_0$ , and diamond:  $r = 2r_0$ ); subset size proportional to speckle  
5 size (*i.e.* constant  $d/r$ , with  $d = 16$  pixels for  $r = r_0$ ); behaviour 1 (a), intermediate  
6 behaviour (b) and behaviour 2 (c).  
7  
8  
9  
10

11  
12  
13  
14 Figure 7. Mean random error multiplied by the subset size ( $d\overline{\sigma_u}$ ) as a function of noise  
15 level  $\sigma_n$  for 3 subset sizes (square:  $d = 8$  pixels, triangle:  $d = 16$  pixels, and diamond:  $d =$   
16  $32$  pixels); standard speckle size ( $r = r_0$ ); behaviour 1 (a), intermediate behaviour (b) and  
17 behaviour 2 (c).  
18  
19  
20  
21  
22  
23  
24

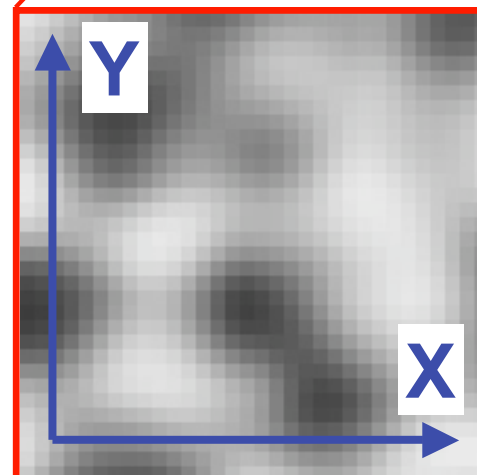
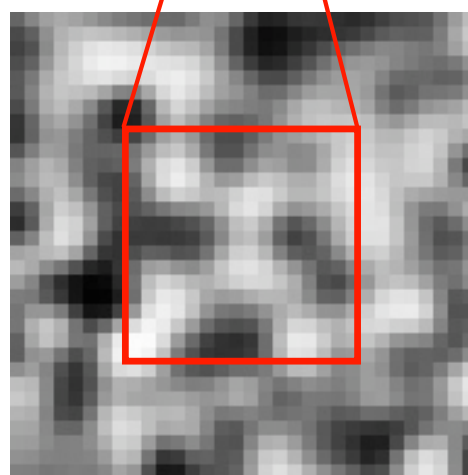
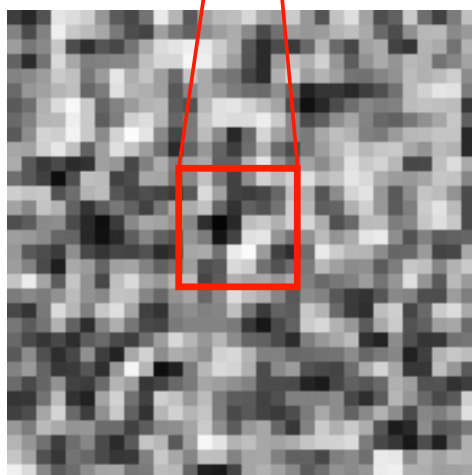
25  
26 Figure 8. Standard deviation of the random error  $\sigma_{\sigma_u}$  as a function of noise level  $\sigma_n$  for  
27 the standard speckle size  $r_0$  with  $d = 16$  pixels; behaviour 1 (a), intermediate behaviour  
28 (b) and behaviour 2 (c).  
29  
30  
31  
32  
33

34  
35 Figure A1. Variations of the quantisation error  $\varepsilon_q(x)$  as a function of the charge  $x$ .  
36  
37  
38  
39  
40  
41  
42  
43  
44  
45  
46  
47  
48  
49  
50  
51  
52  
53  
54  
55  
56  
57  
58  
59  
60

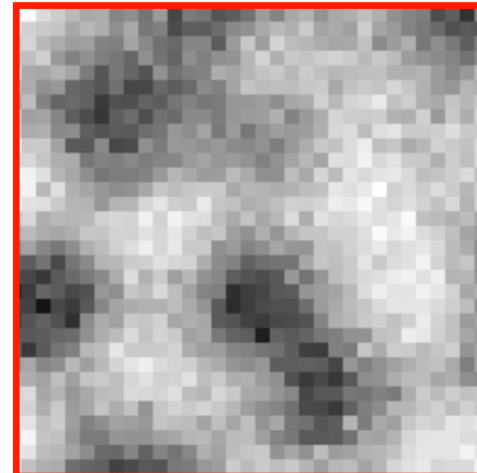
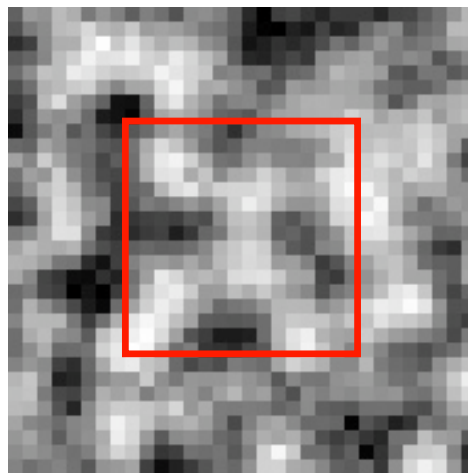
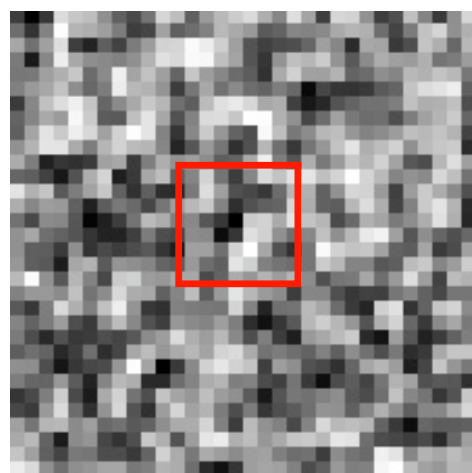
1  
2  
3 192x192 pixels  
4 no noise  
5  
6  
7  
8  
9  
10  
11  
12  
13



14  
15  
16  
17  
18 6x enlargement  
19 32x32 pixels  
20 no noise  
21  
22  
23  
24  
25  
26  
27  
28  
29  
30

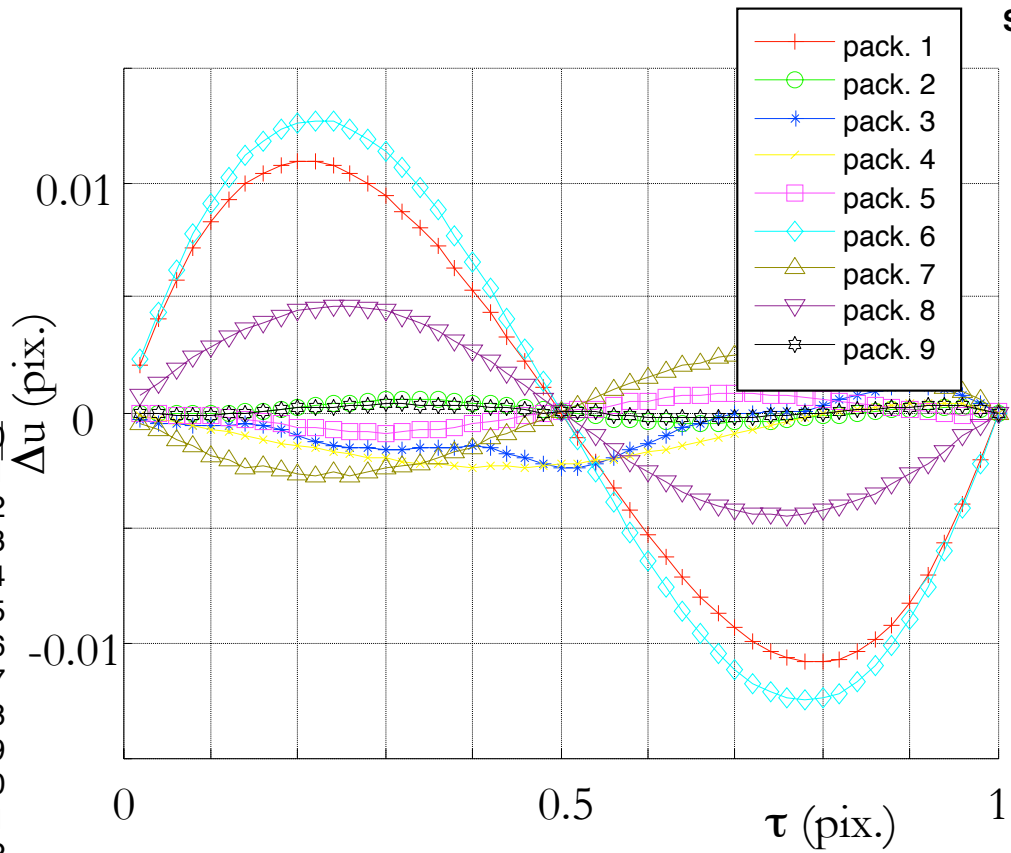


31  
32  
33  
34  
35 6x enlargement  
36 32x32 pixels  
37 noise 16 GL  
38  
39  
40  
41  
42  
43  
44  
45  
46  
47



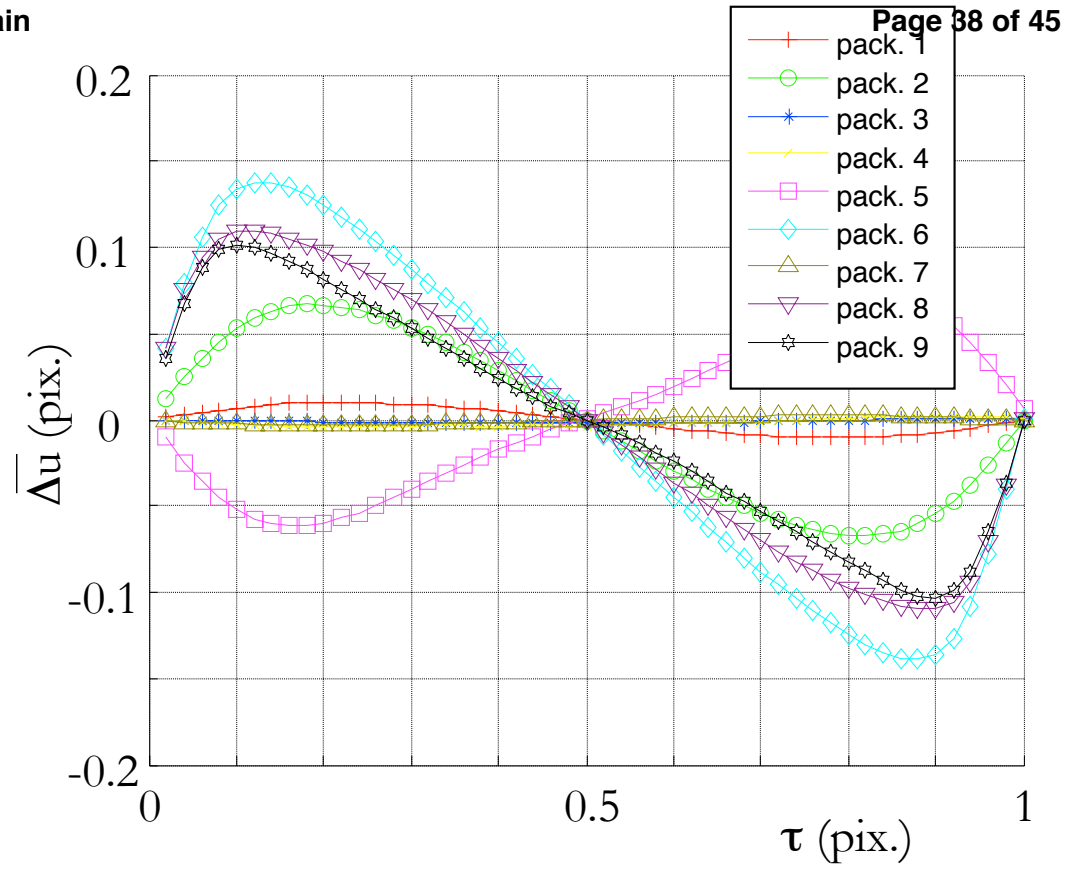


1  
2  
3  
4  
5  
6  
7  
8  
9  
10  
11  
12  
13  
14  
15  
16  
17  
18  
19  
20  
21  
22  
23  
24  
25  
--

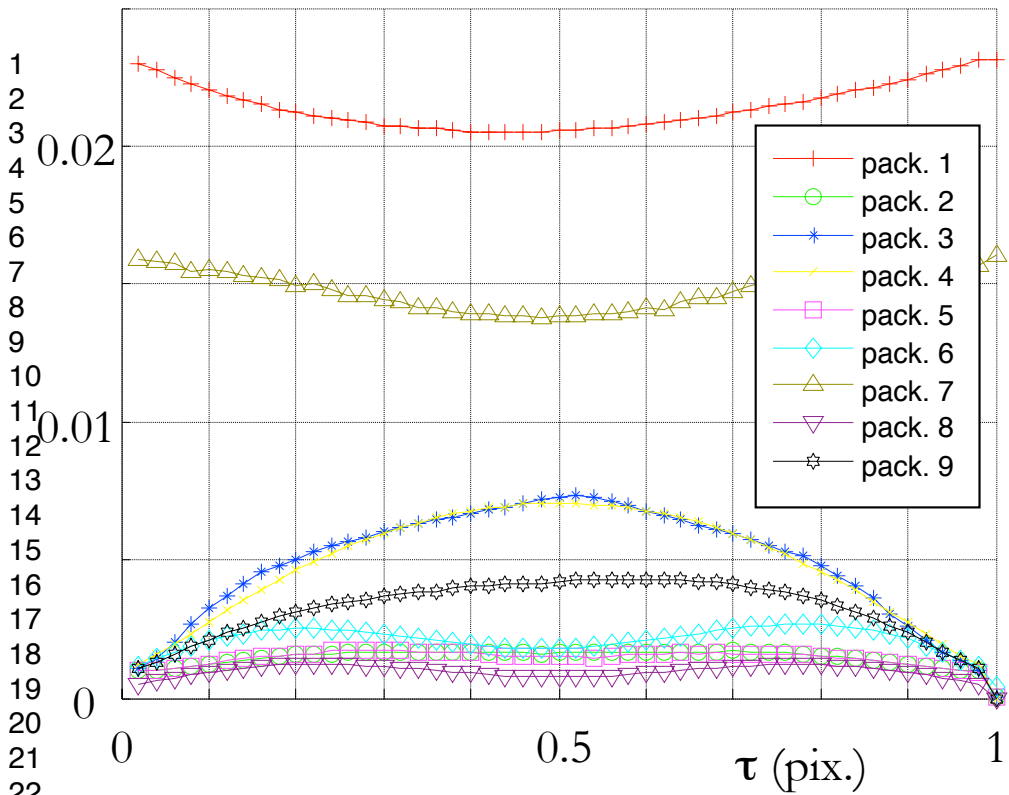


(a)

Strain

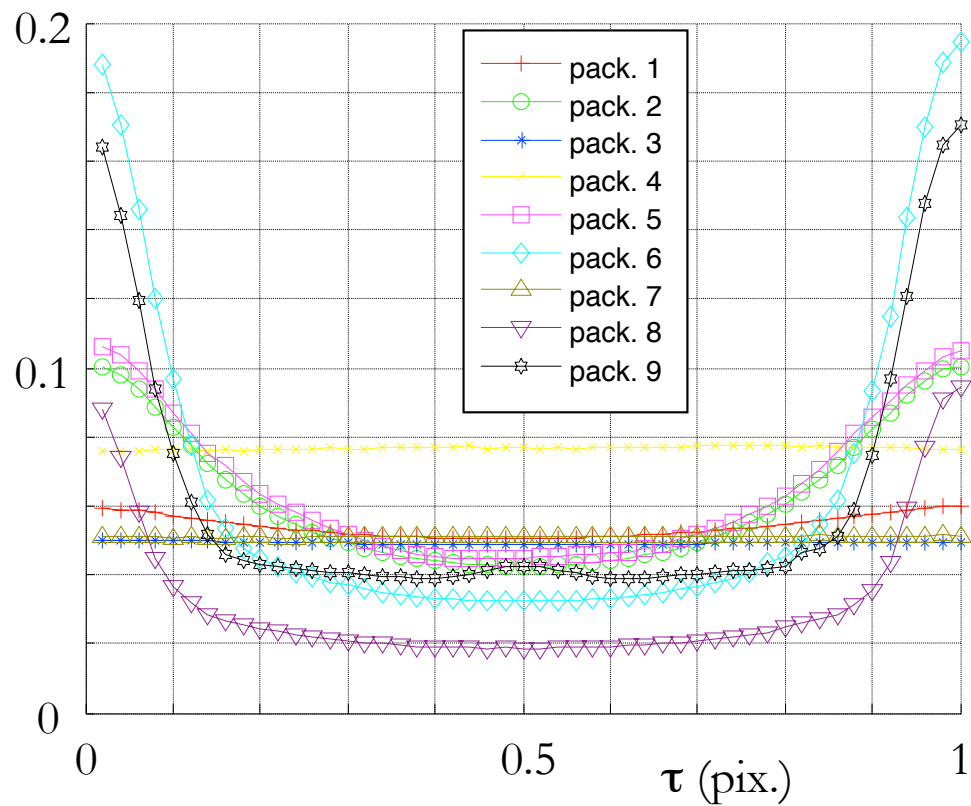


(b)



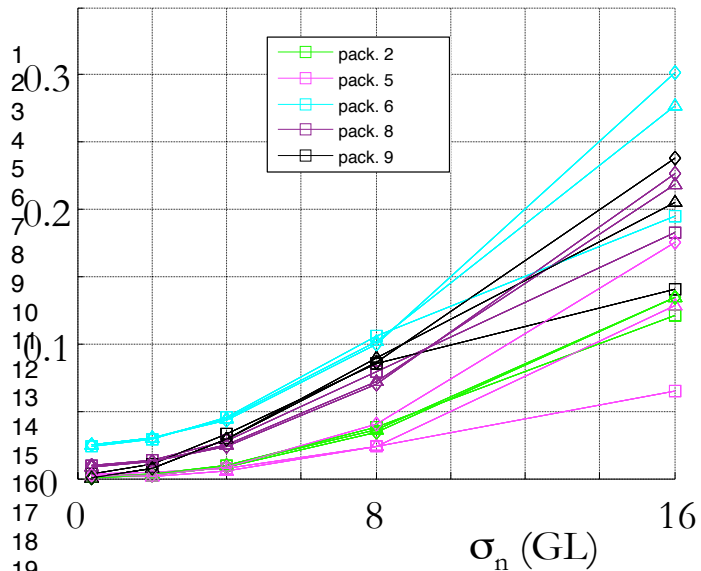
(a)

Strain  $\sigma_u$  (pix.)



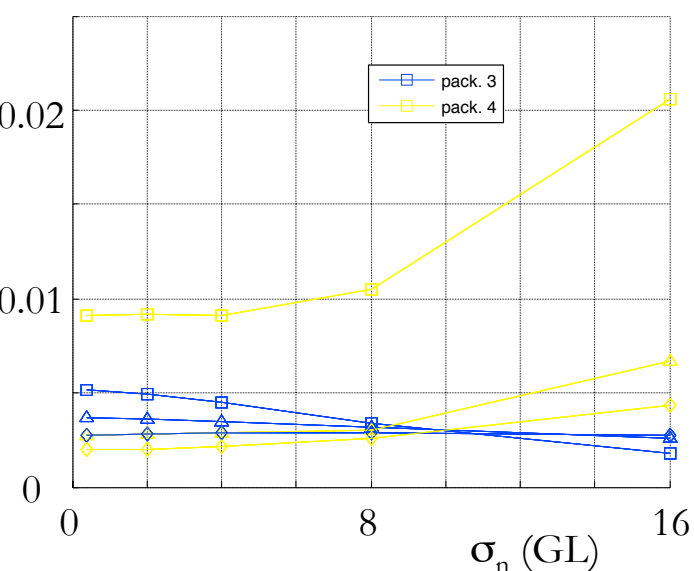
(b)

$A_{\Delta u}^-$  (pix.)



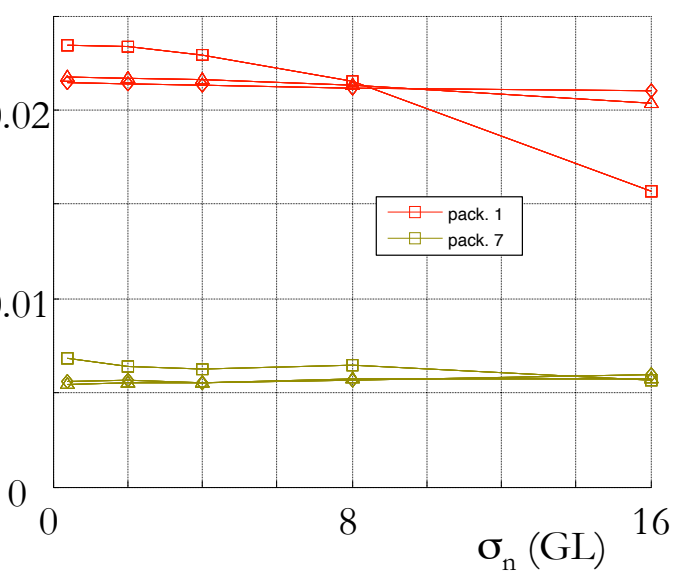
(a) Behaviour 1

$A_{\Delta u}^-$  (pix.)

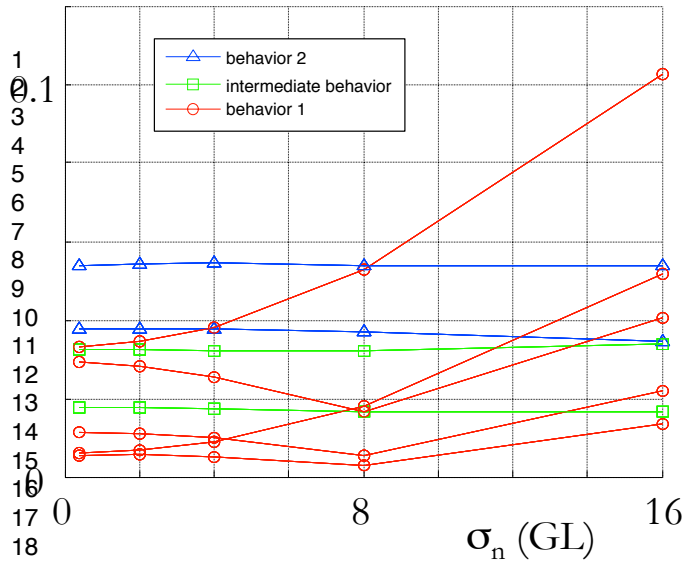


(b) Intermediate behaviour

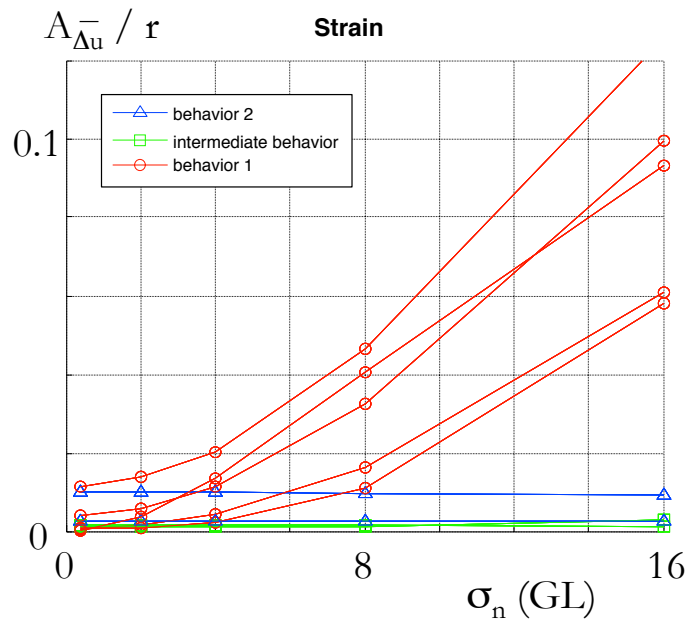
$A_{\Delta u}^-$  (pix.)



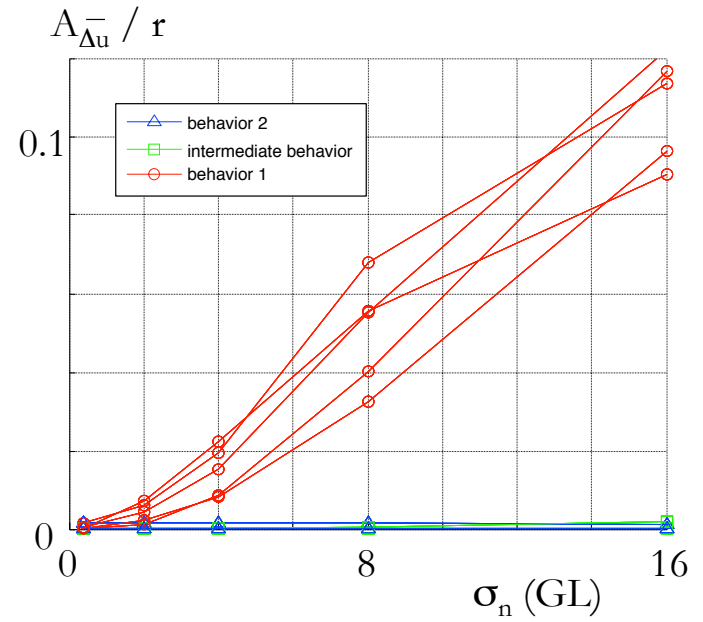
(c) Behaviour 2



(a)  $r = r_0/2$

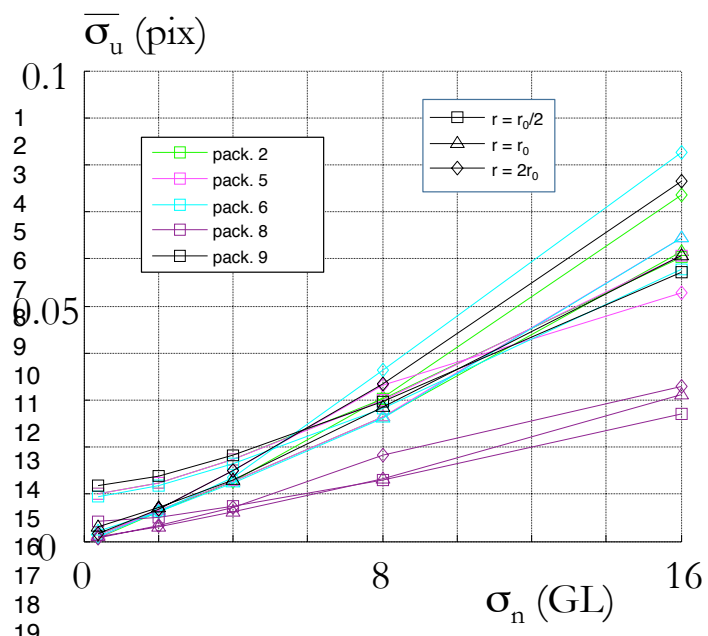


(b)  $r = r_0$

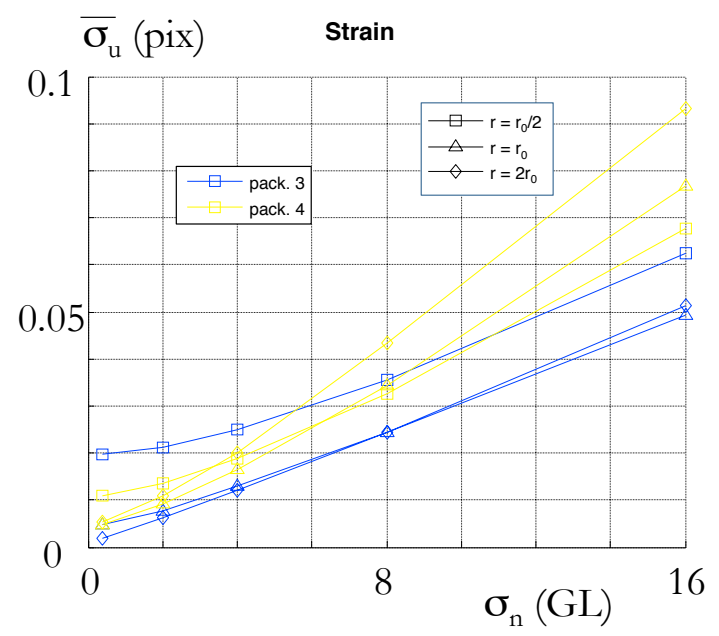


(c)  $r = 2 r_0$

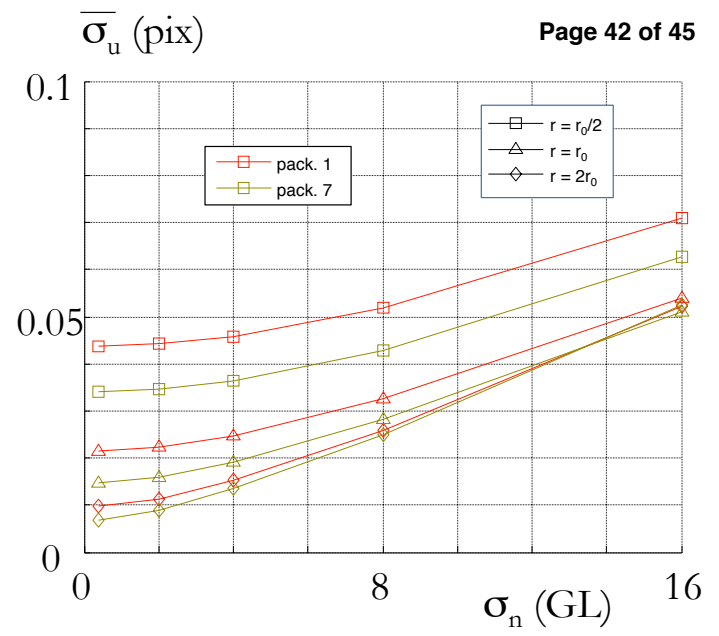
1  
2  
3  
4  
5  
6  
7  
8  
9  
10  
11  
12  
13  
14  
15  
16  
17  
18  
19  
20  
21  
22



(a) Behaviour 1

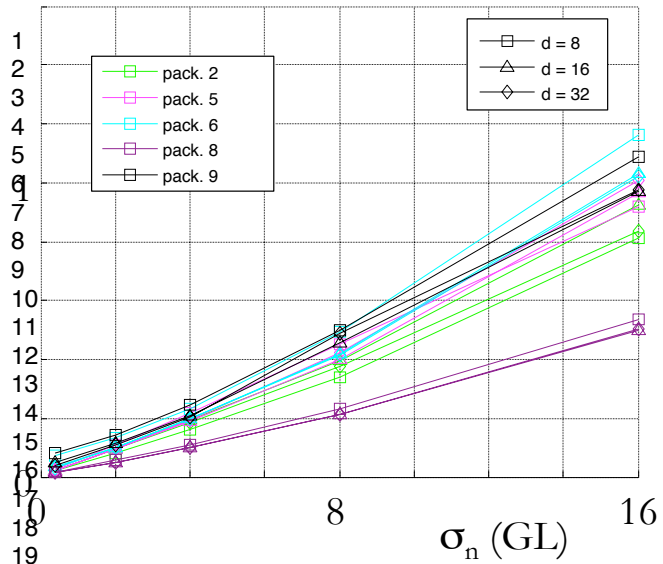


(b) Intermediate behaviour

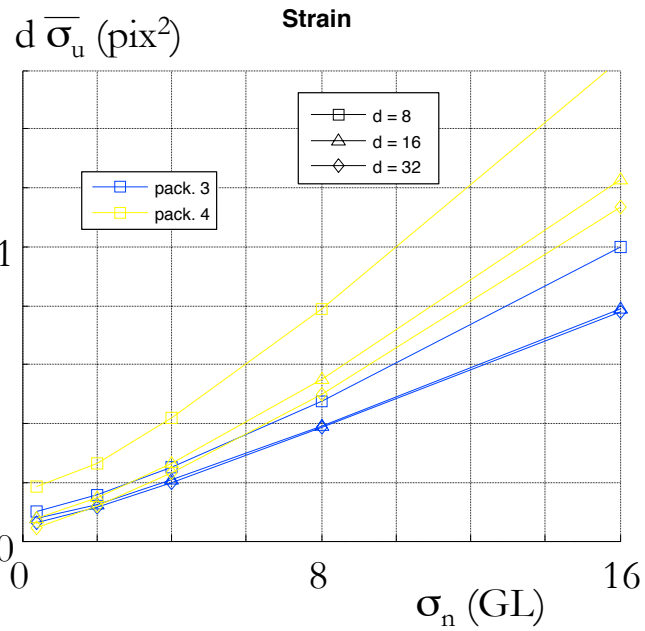


(c) Behaviour 2

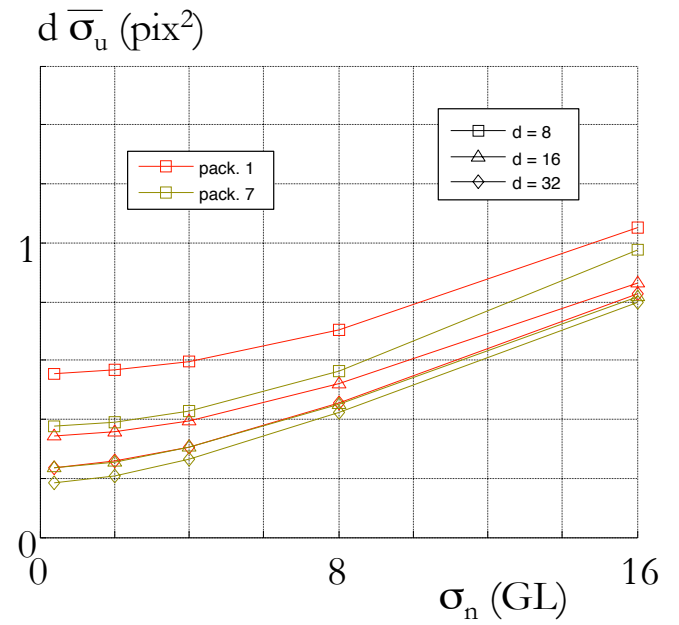
1  
2  
3  
4  
5  
6  
7  
8  
9  
10  
11  
12  
13  
14  
15  
16  
17  
18  
19  
20  
21  
22



(a) Behaviour 1

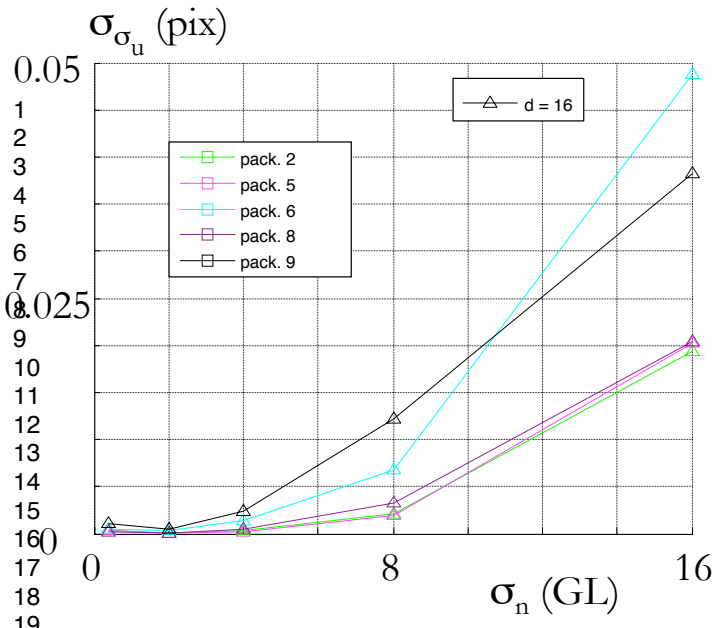


(b) Intermediate behaviour

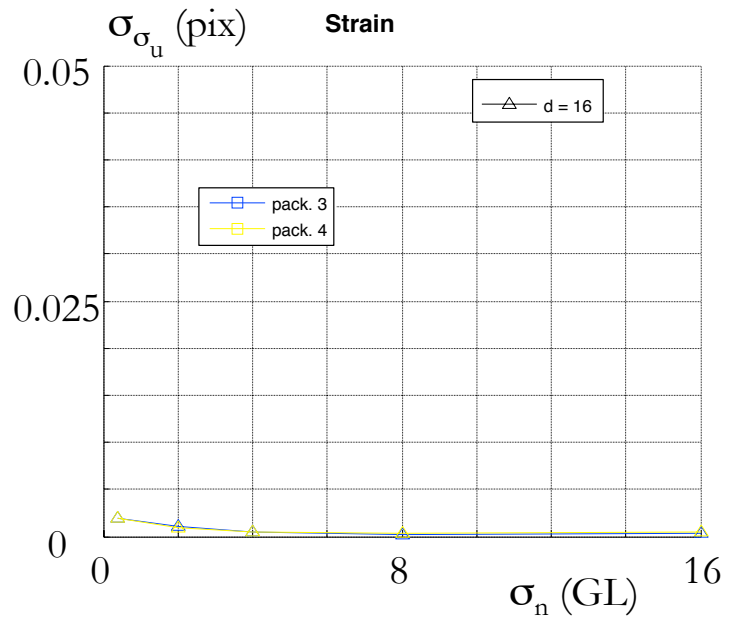


(c) Behaviour 2

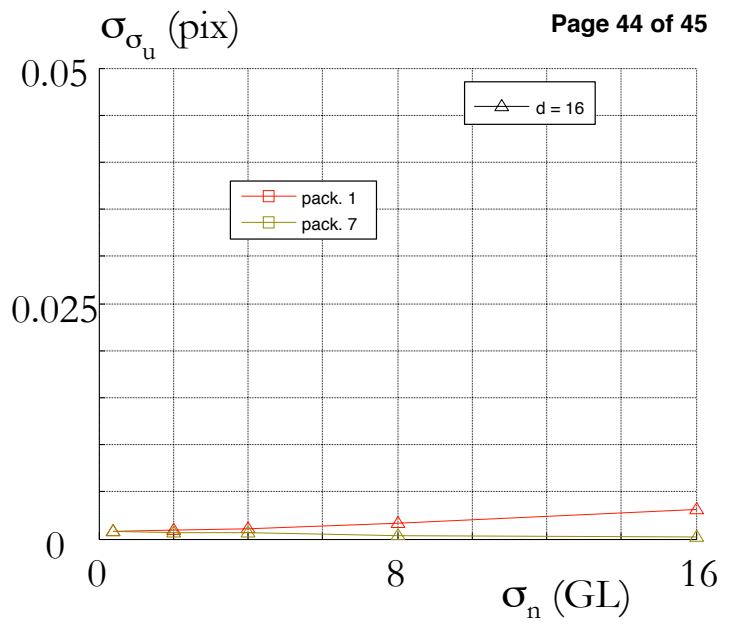
17  
18  
19  
20  
21  
22



(a) Behaviour 1



(b) Intermediate behaviour



(c) Behaviour 2

1  
2  
3  
4  
5  
6  
7  
8  
9  
10  
11  
12  
13  
14  
15  
16  
17  
18  
19  
20  
21  
22

