



HAL
open science

Ground-based measurements of the solar diameter during the rising phase of solar cycle 24

Mustapha Meftah, T. Corbard, Abdanour Irbah, R. Ikhlef, F. Morand, Cédric Renaud, Alain Hauchecorne, P. Assus, J. Borgnino, B. Chauvineau, et al.

► **To cite this version:**

Mustapha Meftah, T. Corbard, Abdanour Irbah, R. Ikhlef, F. Morand, et al.. Ground-based measurements of the solar diameter during the rising phase of solar cycle 24. *Astronomy and Astrophysics - A&A*, 2014, 569, A60 (15p.). 10.1051/0004-6361/201423598 . hal-01068755

HAL Id: hal-01068755

<https://hal.science/hal-01068755>

Submitted on 26 Sep 2014

HAL is a multi-disciplinary open access archive for the deposit and dissemination of scientific research documents, whether they are published or not. The documents may come from teaching and research institutions in France or abroad, or from public or private research centers.

L'archive ouverte pluridisciplinaire **HAL**, est destinée au dépôt et à la diffusion de documents scientifiques de niveau recherche, publiés ou non, émanant des établissements d'enseignement et de recherche français ou étrangers, des laboratoires publics ou privés.

Ground-based measurements of the solar diameter during the rising phase of solar cycle 24

M. Meftah¹, T. Corbard², A. Irbah¹, R. Ikhlef^{2,3}, F. Morand², C. Renaud²,
A. Hauchecorne¹, P. Assus², J. Borgnino², B. Chauvineau², M. Crepel¹, F. Dalaudier¹,
L. Damé¹, D. Djafer⁴, M. Fodil³, P. Lesueur¹, G. Poiet¹, M. Rouzé⁵, A. Sarkissian¹, A. Ziad²,
and F. Laclare²

¹ Université Versailles St-Quentin; Sorbonne Universités, UPMC Univ. Paris 06; CNRS/INSU, LATMOS-IPSL, 11 Boulevard d'Alembert, 78280 Guyancourt, France

e-mail: Mustapha.Meftah@latmos.ipsl.fr

² Laboratoire Lagrange, UMR7293, Université de Nice Sophia-Antipolis, CNRS, Observatoire de la Côte d'Azur, Bd. de l'Observatoire, 06304 Nice, France

e-mail: Thierry.Corbard@oca.eu

³ CRAAG, Observatoire d'Alger, Alger, Algérie

⁴ Unité de Recherche Appliquée en Energies Renouvelables (URAER), Centre de Développement des Energies Renouvelables (CDER), B.P. 88, Ghardaïa, Algérie

⁵ CNES - Centre National d'Etudes Spatiales, Rue Edouard Belin, F-31000 Toulouse, France

Received February 6, 2014; accepted *****

ABSTRACT

Context. For the past thirty years, modern ground-based time-series of the solar radius have shown different apparent variations according to different instruments. The origins of these variations may result from the observer, the instrument, the atmosphere, or the Sun. Solar radius measurements have been made for a very long time and in different ways. Yet we see inconsistencies in the measurements. Numerous studies of solar radius variation appear in the literature, but with conflicting results. These measurement differences are certainly related to instrumental effects or atmospheric effects. Use of different methods (determination of the solar radius), instruments, and effects of Earth's atmosphere could explain the lack of consistency on the past measurements. A survey of the solar radius has been initiated in 1975 by Francis Laclare, at the Calern site of the Observatoire de la Côte d'Azur (OCA). Several efforts are currently made from space missions to obtain accurate solar astrometric measurements, for example, to probe the long-term variations of solar radius, their link with solar irradiance variations, and their influence on the Earth climate.

Aims. The *Picard* program includes a ground-based observatory consisting of different instruments based at the Calern site (OCA, France). This set of instruments has been named "*Picard Sol*" and consists of a Ritchey-Chrétien telescope providing full-disk images of the Sun in five narrow-wavelength bandpasses (centered on 393.37, 535.7, 607.1, 782.2, and 1025.0 nm), a Sun-photometer that measures the properties of atmospheric aerosol, a pyranometer for estimating a global sky-quality index, a wide-field camera that detects the location of clouds, and a generalized daytime seeing monitor allowing us to measure the spatio-temporal parameters of the local turbulence. *Picard Sol* is meant to perpetuate valuable historical series of the solar radius and to initiate new time-series, in particular during solar cycle 24.

Methods. We defined the solar radius by the inflection-point position of the solar-limb profiles taken at different angular positions of the image. Our results were corrected for the effects of refraction and turbulence by numerical methods.

Results. From a dataset of more than 20,000 observations carried out between 2011 and 2013, we find a solar radius of 959.78 ± 0.19 arc-seconds ($696,113 \pm 138$ km) at 535.7 nm after making all necessary corrections. For the other wavelengths in the solar continuum, we derive very similar results. The solar radius observed with the *Solar Diameter Imager and Surface Mapper II* during the period 2011-2013 shows variations shorter than 50 milli-arc-second that are out of phase with solar activity.

Key words. Astrometry – Sun: fundamental parameters – Sun: activity

1. Introduction

Measurements of the solar radius are of great interest within the scope of the debate on the role of the Sun in climate change (Rozelot (2001a); Schröder (2001); Rozelot (2001b)). The solar radius is mainly related to the knowledge of the solar atmosphere. However, it is very difficult to measure this fundamental parameter of astrophysical interest. Solar radius determination is one of the oldest problems in astrophysics. Systematic measurements of the solar radius have been made since Antiquity (Rozelot & Damiani (2012)). At the end of the nineteenth cen-

tury, an investigation of the value of the solar radius obtained by meridian observations was carried out by Arthur Auwers (1891). He published a value for the solar radius of 959.63 arc-seconds that he derived from heliometer measurements made by 29 observers (Wittmann (1977)) during the period 1873-1886. In solar modeling, this canonical value has been commonly used and was adopted by the International Astronomical Union (IAU). Solar radius measurements (mostly from ground) are plotted in Figure 1, showing inconsistent results that are probably caused by different instruments, different spectral domains of measurements, different calculation methods, different

definitions (Haberreiter et al. (2008b)), and different sites where the conditions of observations are not comparable. Thus, the accurate absolute value of the solar radius is not the subject of a consensus. Indeed, the Earth atmosphere generates various hindrances that make morphometric and photometric studies subject to discussion concerning the distinction between solar activity and atmospheric effects merged in ground-based measurements. They include refraction, turbulence, scattering, extinction, and diurnal alternation. It is suspected that the past inconsistencies of the temporal dependence of the solar radius measured from the ground stem primarily from such contingencies (Ribes et al. (1991); Delache & Kroll (1994); Badache-Damiani et al. (2007)). Efforts have been made in the past to understand and quantify the effects of atmospheric disturbances on ground-based observations (Brown (1982); Lakhali et al. (1999)). The interpretation of ground-based observations, however, remains controversial to date, and recent measurements obtained outside the atmosphere (balloon flights and space instruments) indicate that the canonical value of the solar radius is under-estimated. Ideally, space instrumentation is required for solar radius measurements, but this instrumentation is a high-level technical challenge given the desired accuracy (a few milli-arc-second), and mission duration in a harsh environment (BenMoussa et al. (2013)). From the ground, the instruments are not affected by degradation due to space environment, and maintenance can be easily provided. If, in addition, the atmospheric effects are properly monitored and taken into account, they represent our best chance to build the needed long time-series records. That is why an important program of measurements from the ground is associated with the space operations during and after the *Picard* mission. The *Picard* program (Thuillier et al. (2006)) owes its name to Jean Picard, considered as a pioneer of precise modern astrometry. *Picard Sol* comprises the *Solar Diameter Imager and Surface Mapper II* or SODISM II (a copy of the SODISM space instrument), the turbulence monitor (*Moniteur d'Images Solaires Franco-Algérien* or MISOLFA), and the additional instrumentation. The main objectives of the *Picard Sol* mission are

- to understand the influence of the atmosphere on the solar radius,
- to determine the relation between the turbulence parameters and the measured solar radius,
- to determine whether small-angle scattering by aerosols could also impact significantly the metrologic accuracy,
- to compare the solar radius measurements obtained with SODISM II and ground-based instruments (to identify possible biases),
- to continue solar radius measurements with ground-based instruments.

First, we briefly describe the historical solar radius measurements obtained at Calern Observatory. Section 3 highlights the interest in solar radius variation measurements. Then, we present the *Picard* ground-based facility for long-term solar radius measurements. Finally, we show some results in terms of solar radius, atmospheric effects, and correction accuracy.

2. Historical solar radius measurements at Calern Observatory

The solar radius survey was initiated in 1975 with the Solar Astrolabe at Calern Observatory (France). Simultaneously with visual observations on the same instrument, a program of charge-coupled device (CCD) records was conducted, which

started in 1989. The coherence of visual and CCD measurements thus obtained over ten years permitted qualifying the whole visual series, which appeared to be free of systematic personal effects (Laclare et al. (1999)). The DORAYSOL (“*Définition et Observation du Rayon Solaire*”) instrument was then designed and also developed at Calern Observatory. The principle of this instrument remains the same as that of the Solar Astrolabe (timing the crossing of a parallel of altitude by the Sun), but a prism at a varying angle enables more daily measurements. The DORAYSOL mean solar radius of 959.48 arc-seconds (with $\sigma=0.32$ arc-seconds) was deduced from 19,169 measurements between years 2000 and 2006 (Morand et al. (2010)). Data were corrected for atmospheric refraction, but not for turbulence. For the same period, a mean solar radius of 959.55 arc-seconds (with $\sigma=0.26$ arc-seconds) was deduced from 371 Astrolabe measurements (with the same corrections). Measurements of the solar radius made at Calern with the Solar Astrolabe over two solar cycles (between 1978 and 1994) show apparent variations anti-correlated with solar activity defined by the number of sunspots (Laclare et al. (1996)). These results have raised many questions and led to the development of the dedicated *Picard* mission. Simulation of atmospheric effects on the solar radius measurements made at the Solar Astrolabe also showed the influence of seeing conditions and the importance of having a monitor that records the image quality (Lakhali et al. (1999)). The idea of developing MISOLFA (Irbah et al. (2001); Assus et al. (2002)) established itself, to run in conjunction with the *Picard* space mission and SODISM II. Thus, the *Picard* program contributes to the historical solar radius series initiated at Calern Observatory.

3. Solar radius variability

Possible temporal variations of the solar radius are important as an indicator of internal energy storage and as a mechanism for changes in the total solar irradiance (TSI). Long-term or cyclic variations in the solar luminosity can be related to the corresponding changes in the solar radius R_{\odot} and effective temperature T_{eff} of the Sun by derivating the Stefan-Boltzmann equation:

$$\frac{\Delta TSI}{TSI} = 2 \times \frac{\Delta R_{\odot}}{R_{\odot}} + 4 \times \frac{\Delta T_{eff}}{T_{eff}}. \quad (1)$$

Thus, it is interesting to estimate the solar radius variations with the solar cycle. If we assume that the observed TSI variations over a solar cycle ($\sim 0.1\%$) represents an upper limit for the luminosity variation and assuming no variation in T_{eff} , the strongest possible variation ΔR_{\odot} of the solar radius cannot exceed 0.5 arc-second during a solar cycle. Periodicities of solar activity with periods longer than the sunspot cycle (e.g., the 87-year Gleissberg cycle or the 210-year Suess cycle) have been found and fueled a discussion on the influence of solar variability on the Earth’s climate (Braun et al. (2005)). The potential link between solar activity and solar radius variations remains a matter of debate, however, requiring both modeling and measurements with enough accuracy over long periods. The relationship between the solar radius and the solar activity is the field of measurements and solar modeling. One of the first researchers to raise questions about the solar radius variations was Hermann Helmholtz (1821 – 1894), who proposed a theory for the solar luminosity that states that the Sun had been larger in the past and was slowly collapsing into itself because of its own gravity, releasing gravitational energy in the form of light and heat. But that was before nuclear fusion was discovered. Eddy and Boornazian (1979)

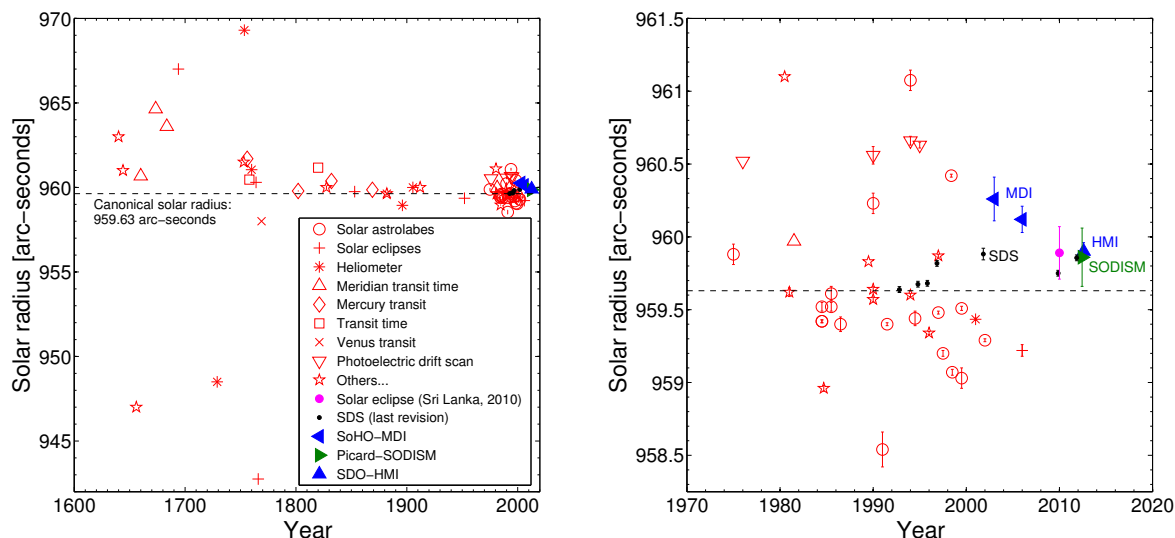


Fig. 1. (left) Solar radius measurements (red symbols) made since the seventeenth century (Rozelot & Damiani (2012)). The mean value of all these measurements is close to 960 arc-seconds. (right) Focus on solar radius measurements made since 1970. *Solar Disk Sextant* (SDS) measurements (Sofia et al. (2013)) are represented with black circles. *Solar and Heliospheric Observatory - Michelson Doppler Imager* (SoHO-MDI) and *Solar Dynamics Observatory - Helioseismic and Magnetic Imager* (SDO-HMI) records are represented with blue symbols. The *Solar Diameter Imager and Surface Mapper* (SODISM) measurement obtained during the transit of Venus is represented with a green symbol. Adassuriya et al. (2011) found a solar radius of 959.89 ± 0.18 arc-seconds (see magenta circle symbol) during solar eclipse in Sri Lanka.

were pioneers in the field of measuring solar radius variations. From the analysis of Greenwich meridian transit measurements over more than a century (1836–1853), they found a statistically significant secular decrease of the solar diameter of about 0.1% per century, which is even more than the rate proposed by Helmholtz in 1854 to explain solar luminosity. Later, however, while analyzing larger datasets spanning 265 years, Gilliland (1981) reported a marginally significant secular decrease of only around 0.1 arc-second per century. Other analyses concluded that there has been no detectable variation of the Sun over the past 250 years (Parkinson et al. (1980)). Michel Toulmonde compiled all the solar radius measurements made between 1660 to 1995 and concluded that the mean solar radius at one astronomical unit is 960.0 ± 0.1 arc-seconds. His investigations did not reveal any substantial secular variation in the solar radius (Toulmonde (1997)). However, it is very difficult to extract a trend in the solar radius from historical data. Thus, a possible long-term trend in solar radius records is still a matter of debate. On the one hand, the variability of the solar radius can be analyzed during a solar cycle. Historical solar radius measurements performed at the Calern site have revealed an anticorrelation with solar activity (Laclare et al. (1996)) for a period covering solar cycles 21 and 22 (1978–1994). However, during solar cycle 23, ground-based records (*Solar Astrolabe* and *DORAYSOL*) showed no clear correlation or anticorrelation between the solar radius and the activity of the Sun (Morand et al. (2010)). The *Solar Disk Sextant* (SDS) experiment shows the solar radius variability through its seven balloon flights during the years 1992 to 2011. The solar radius is found to vary over that period by up to 0.2 arc-second (Sofia et al. (2013)), but the variation is not in phase with solar activity. Data from the *Michelson Doppler Imager* (MDI) instrument onboard the *Solar and Heliospheric Observatory* (SoHo) cover the whole solar cycle 23 and show no evidence of secular trends in the solar radius, or variations attributable to the 11-year cycle. Systematic changes in the solar radius with the sunspot cycle must be smaller than 23 milli-arc-second (mas) peak-to-peak

(Kuhn et al. (2004); Bush et al. (2010)). Solar radius variations for different instruments are plotted in Figure 2, showing some inconsistent results. The MDI result, even if often considered as the most reliable to date, would therefore certainly gain in being confirmed by other dedicated solar missions, such as *Picard*. Foukal et al. (2006) concluded that it is unlikely that solar radius measurements can reveal deeper-lying sources of solar irradiance variations, as was originally hoped. This is coherent with both the fact that modeling the net contribution of sunspots, faculae and plages is able to explain at least 90% of the observed cycle TSI variations (Ball et al. (2012)), and the fact that no observable solar radius variation is expected from these surface effects (Spruit (1991)). Therefore, changes in the size of the solar disk contribute probably negligibly to the TSI variations during a solar cycle. Coherent long-term measurements are therefore still needed to determine any significant variations of the solar radius during a solar cycle or any secular trend. This is the aim of the *Picard SOL* project in continuation of the series started at Calern observatory in 1978.

4. Picard Sol, a ground-based facility for long-term measurements

The *Picard* program includes a ground-based observatory consisting of different instruments based at the Calern site (Observatoire de la Côte d’Azur, France). *Picard Sol* and its instruments were described in detail by Meftah et al. (2012). SODISM II is a multiwavelength full disk solar imager specially designed for metrological solar radius measurements. MISOLFA (Corbard et al. (2010); Irbah et al. (2010); Ikhlef et al. (2012)) is a high-cadence solar limb imager allowing us to measure the spatio-temporal parameters of the local turbulence. The photometer provides a quality index of pictures taken by SODISM II (aerosol optical depth or thickness and water vapor). The pyranometer measures the luminous flux received and provides an-

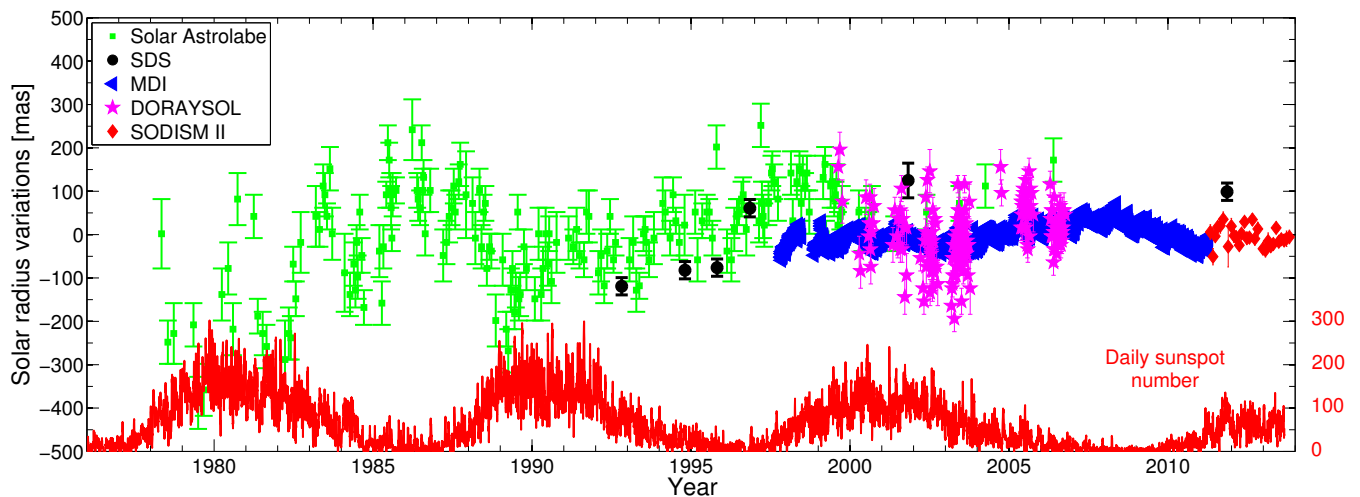


Fig. 2. Evolution of the solar radius variations over time for ground instruments (Solar Astrolabe, DORAYSOL and SODISM II monthly mean at 782.2 nm), balloon experiment (SDS), and space instrument (MDI) vs. daily sunspot number time-series. For each series, the mean has been taken as reference value.

other quality index for SODISM II measurements. The visible wide-field camera is used to detect the location of clouds.

– The SODISM II ground-based instrument and solar radius measurements

For the space mission, two identical units were developed. One unit named SODISM (Meftah et al. (2014b)) was launched on 15 June 2010, and the second was installed some months later at Calern Observatory (N 43°44'53" latitude, E 6°55'36" longitude and altitude of 1271 m). This ground-based unit, named SODISM II, is placed in a vacuum tank (Figure 3) and pointed toward the Sun.



Fig. 3. View of the SODISM II equatorial mount. The ground-based telescope is placed in a vacuum tank closed by a glass window.

SODISM II is an 11-cm diameter telescope with a CCD at its focal plane. One image is recorded every minute with the instrument. It is a Ritchey-Chrétien telescope (to minimize both spherical and coma aberrations) with a focal length of 2,626 mm, and an aperture of F/23 with a central obscuration of 40% in diameter (F/30 and 50% for the main channel). This aperture was chosen for geometric resolution. The field of view is $\sim 36 \times 36$ arc-

minutes. The detector is a 2048 by 2048 pixel CCD array with square $13.5 \mu\text{m}$ pixels (~ 1.06 arc-second per pixel). During nominal operations (solar pointing), the Sun is the only significant light source and it almost fills the field of view. This is why no external baffles were foreseen. This design has some field curvature, but image quality is only required at the Sun edge, so the focus is adjusted to this. The SODISM II main optical path consists essentially of a front window, a primary mirror (M1), a secondary mirror (M2), interchangeable interference filters, and a CCD. These choices about the optical configuration and spectral channels determine the core design of SODISM II, but the instrument has been supplemented with a number of important design features that augment its capacities:

1. the whole SODISM II instrument is in primary vacuum at ~ 10 mbar,
2. the whole SODISM II assembly is thermally regulated at $\sim 20^\circ\text{C}$,
3. the Sun image is stabilized on the detector by the equatorial mount (better than ± 0.5 arc-second during the exposure time),
4. a front window bears a reflective and absorbing coating on its inner side, which divides the penetration of solar flux inside the instrument by ~ 20 ,
5. two successive filter wheels permit inserting one of the spectral filters (between 393.37 and 1025.0 nm) and other refractive elements (lens for stellar operations), or to leave the optical path open,
6. a $2k \times 2k$ frame-transfer CCD is placed at the focal plane. A shutter mechanism provides it with dark conditions except within the duration of its electronic exposures. The CCD is anti-reflective coated,
7. a Peltier and a cold finger remove the heat at the back of the CCD to cool it ($-10^\circ\text{C} \pm 0.2^\circ\text{C}$) and decrease its dark-signal during nominal operations. The low CCD temperature and the dark conditions granted by the shutter provide the relatively slow readout of the camera (~ 22 s).

Two filters wheels carry a set of interference filters with specific roles, as shown in Table 1. The central wavelengths of the five spectral bands (*viz.* 393.37, 535.7, 607.1, 782.2 nm,

and 1025.0 nm) ensue from the following rationale. The photospheric bandpasses (535.7 to 1025.0 nm) were selected for being quasi-free of Fraunhofer lines to account for the solar continuum and to therefore neglect any overlying structure. They also had to perpetuate valuable historical series, or to initiate new time-series if a compelling case could be made. A narrow bandpass centered around 535.7 nm was chosen for its heritage with the Calern measurements (Solar Astrolabe and DORAYSOL), although they were carried out in a wider bandpass of around 548 nm (Laclare et al. (1996)). SODISM II is a replica of the space instrument and used two different filters at 535.7 nm for solar astrometry (a) and helioseismic observations (b). Furthermore, SODISM probes the solar interior *via* an helioseismic analysis of the solar disk and limb images at 535.7 nm (b), and *via* astrometric investigations at the limb. For our ground-based measurements, we kept these two filters at 535.7 nm to monitor the aging process. In both cases, we are beyond the characteristic time of the turbulence, which is measured in milliseconds. A second narrow channel was adopted at 607.1 nm. It can be compared with the 590–670 nm spectral range of the SDS balloon experiment (Sofia et al. (1984, 2013)). This band has been used by the *Precision Solar Photometric Telescope* (PSPT) and produces images at 607.1 nm (Coulter et al. (1996)) in the red continuum (http://lasp.colorado.edu/pspt_access/). It can also be compared with the 617.3 nm continuum spectral range of the SDO-HMI space experiment (Scherrer et al. (2012); Schou et al. (2012)). A third Fraunhofer-line-free bandpass is centered on 782.2 nm. It can relate to the *Solar Diameter Monitor* (SDM) measurements at 800 nm (Brown & Christensen-Dalsgaard (1998)). A last Fraunhofer-line-free bandpass is centered on 1025.0 nm. With this wavelength, we initiate a new time-series, and while remaining in the photospheric continuum, we hope to minimize the impact of turbulence for ground-based observations. The chromospheric channel is centered on 393.37 nm (Ca II K line, singly ionized calcium, which is magnetically active). This permits us to image the low chromosphere and particularly, to observe the regions with an enhanced contrast. It can be compared with the PSPT experiment. References to solar radius observations corresponding to our channels are listed in the Table 2. It is important to note, however, that the uncertainties quoted by the authors for each set of measurements are not directly comparable because they cover periods of different lengths and do not all include estimates of the contribution from systematic effects.

SODISM II has recorded more than 75,000 solar images since the beginning of the mission in May 2011. Figure 4 shows a sample of Level-1 solar images at the six wavelengths recorded in 2013. All images were corrected for dark-current and flat-field. Thus, we can track the solar radius.

– The MISOLFA instrument and turbulence monitoring

Simulation of atmospheric effects on the solar radius measurements shows the influence of seeing conditions (Lakhali et al. (1999)). There are three common descriptions of the astronomical seeing conditions at an observatory of (i) the Fried parameter r_0 (size of a typical lump of uniform air within the turbulent atmosphere) and τ_0 (the time-scale over which the changes in the turbulence become significant), (ii) the turbulence vertical profile $C_n^2(h)$, and (iii) the full width at half maximum (FWHM) of the seeing disk. Using the Von Kármán’s model, it is shown that turbulence simulated through the Fried parameter (r_0) modifies the measured solar radius (Ikhlef et al. (2012)). Figure 5 presents the effect of turbulence as a function of r_0 on SODISM II so-

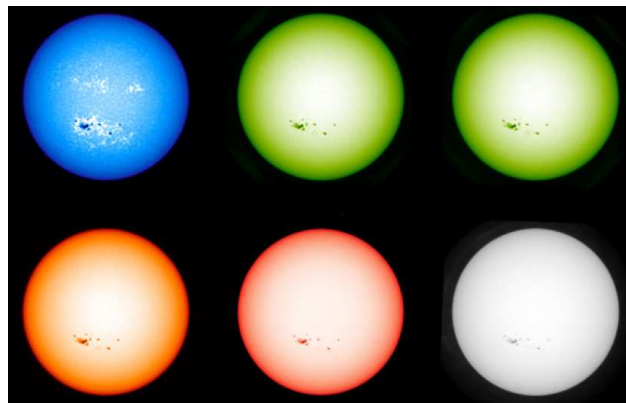


Fig. 4. (top) Solar images in the different SODISM II channels (Level-1 data products): 393.37, 535.7 (a) and 535.7 nm (b) starting from left to right. (bottom) Solar images for other wavelengths: 607.1, 782.2 and 1025.0 nm starting from left to right.

lar radius for each wavelength and shows that the systematic bias decreases as r_0 increases. At 535.7 nm, we note that for r_0 equal to 7 cm, the asymptotic value is reached, but with a bias of ~ 0.18 arc-second. Figure 6 shows the limb-shape evolution for different values of r_0 (FWHM of the solar limb first derivative decreases as r_0 increases). This indicator may also be used to correct the solar radius measurements obtained by SODISM II (see also Figure 13). Thus, atmospheric turbulence modifies the ground-based observed shape of the solar limb, and this effect is always considered to be the source of the discrepancies among the radius determinations. These numerical results confirmed turbulence as a perturbing phenomenon that needs correcting for by about few tens of arc-second, and led to build a dedicated instrument (MISOLFA) to measure the turbulence parameters.

MISOLFA is a solar seeing monitor associated with a CCD detector at its focal plane. This instrument is placed on an Alt-Azimuth mount support, which rotates MISOLFA about two perpendicular axes. The instrument has been described in detail by Irbah et al. (2010). Thirty-two solar limbs are recorded every second with the instrument. It is a Cassegrain-coudé telescope with a focal length of 10,000 mm, a main entrance pupil of 252 mm, and an aperture of F/40. The field of view is $\sim 2.1 \times 1.6$ arc-minutes. The detector is a 640 by 480 pixel CCD array with square $9.9 \mu\text{m}$ pixels (~ 0.20 arc-second per pixel). The MISOLFA design is based on the statistical analysis of the entry angle fluctuations defined as the slope in each point of the wavefront through the pupil. In the case of diurnal conditions, these fluctuations are shown by the observation of the solar limb. Two measurement channels are provided:

1. a direct channel in which the Sun image is formed on a CCD camera with suitable magnification. This channel enables the evaluation of the spatial coherence parameters of the wavefront (Fried parameter, outer scale and isoplanetism domain) as well as the turbulence profiles,
2. a second channel (pupil channel) that forms the image of the pupil through a diaphragm placed on the solar limb is used to evaluate the wavefront temporal parameters using photoelectric detectors (photodiodes).

The first MISOLFA objective is to quantify the atmosphere effects on the ground-based solar radius measurements made by SODISM II, and the second is to validate the correction methods for this effect. To achieve these goals, the MISOLFA instrument measures all the optical parameters, which allows the

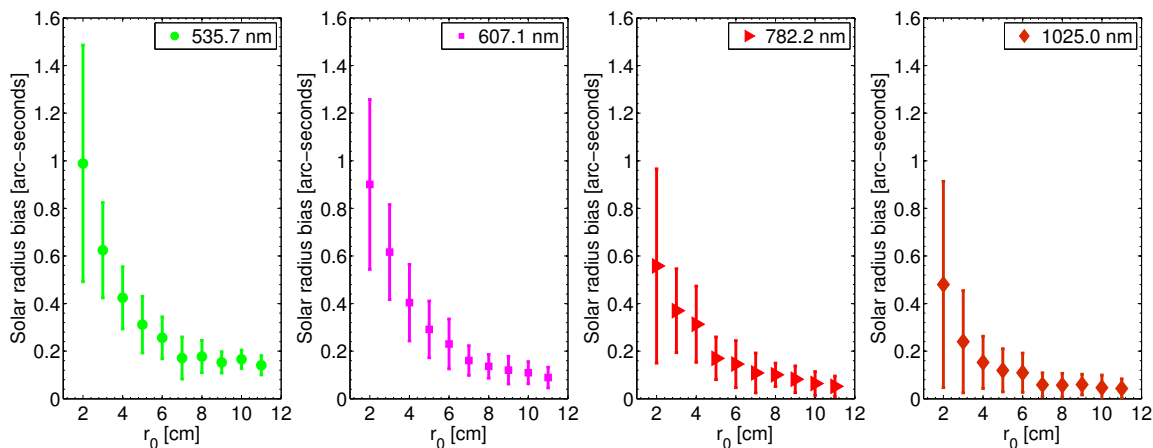
Table 1. SODISM II channels, characteristics, and relationship with other instruments.

Wavelength	Solar atmosphere	Bandwidth [nm]	Exposure time [s]	Role/relationship
393.37 nm	Ca II K line	~0.7	1.70	Chromosphere influence
535.7 nm (a)	Continuum	~0.5	1.30	Solar Astrolabe and DORAYSOL
535.7 nm (b)	Continuum	~0.5	8.90	Solar Astrolabe and DORAYSOL
607.1 nm	Continuum	~0.7	1.28	PSPT, SDS, SDO-HMI
782.2 nm	Continuum	~1.6	1.43	SDM
1025.0 nm	Continuum	~6.4	1.70	New time-series

Table 2. Solar radius observations in arc-seconds (") at one astronomical unit (AU).

Instrument, site, authors	Years	Solar radius ["]	λ [nm]
Solar Astrolabe, Calern (Fr), Laclare et al. (1999)	1975-1998	959.51±0.01 (*)	540.0
SDM, Boulder (US), Brown & Christensen-Dalsgaard (1998)	1981-1987	959.65±0.01 (**)	800.0
SDS, Balloon experiment (mean value), Sofia et al. (2013)	1992-2011	959.76±0.01	615.0
DORAYSOL, Calern (Fr), Morand et al. (2010)	1999-2006	959.48±0.01 (*)	548.0
SoHO-MDI, in space (Transit of Mercury), Emilio et al. (2012)	2003, 2006	960.12±0.09	676.78
Picard-SODISM, in space (Transit of Venus), Meftah et al. (2014a)	2012	959.86±0.20	607.1
SDO-HMI, in space (Transit of Venus), Hauchecorne et al. (2014)	2012	959.90±0.06	617.3

Notes. (*) Solar Astrolabe and DORAYSOL data were corrected for atmospheric refraction and for zenith distance, but not for turbulence. (**) Corrected data to one astronomical unit.


Fig. 5. Simulation of the bias due to Fried parameter (r_0) on SODISM II measurements (Von Kàrmàn model) with long-exposure times ($50 \times \tau_0$).

observation conditions in which the measurements are made to be quantified. These parameters are the Fried parameter r_0 , the spatial coherence outer scale L_0 , the isoplanetism domain θ_0 , the temporal characteristic(s) of the wave front evolution τ_0 , and the turbulence vertical profile $C_n^2(h)$. To perform solar radius measurements, the chosen wavelengths are the same as that of the SODISM II instrument (393, 535, 607, 782, and 1025 nm). Currently, only one wavelength is operational (535 nm with $\Delta\lambda=2.5$ nm). The exposure time of SODISM II images at 535.7 nm (a) is 1.3 s. The mean recorded turbulence characteristic time (τ_0) is about 20 ms, therefore SODISM II images can be considered as long-exposure times (see Figure 5).

– The PAPS photometer and aerosols detection

Details about liquid and solid aerosols, especially cirrus, sub-visible cirrus, and generally transparency of the atmosphere above the observation site are required to properly correct the SODISM II observations. Aerosol influence on solar radius measurements has motivated our interest. Indeed, all the atmospheric

effects may have an impact on our measurements. Thus, an automatic photometer (*Photomètre Automatique Picard Sol* or PAPS) provides a quality index for the pictures taken by SODISM II. The main purpose of PAPS is measuring Sun and sky radiance to derive the total column water vapor (cm), ozone, and aerosol properties using a combination of spectral filters. This instrument is included in the aerosol robotic network (AERONET) program (Holben et al. (2001)). Aerosol optical thickness (AOT) is a quantitative measurement of the extinction of solar radiation by aerosol scattering and absorption between the point of observation and the top of the atmosphere. AOT can be determined from the ground through measurements of the spectral transmission of solar radiation through the atmosphere using the *Picard Sol* photometer. To perform solar radius measurements, the wavelengths (340 nm, 380 nm, 440 nm, 500 nm, 675 nm, 870 nm, and 1020 nm) are chosen very close to those used by the SODISM II instrument. Diffusion by aerosols affects image contrasts, and Figure 7 shows the effect of different atmospheric conditions on two adjacent days on the limb-shape and its first derivative. The interpretation of Figure 7 in terms of the

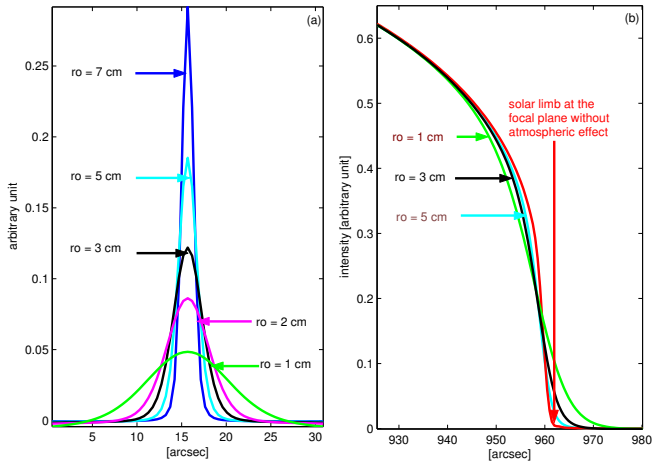


Fig. 6. Effect of turbulence on the limb-shape (b) and its derivative (a) as a function of r_0 .

influence of aerosols alone is not possible because the optical turbulence in the two cases is not necessarily the same. Simulations show that the decrease of contrast does not lead to significant bias on the location of the inflection point. It affects the precision of the measurement, however.

– The PPS pyranometer and solar radiation monitoring

The *Picard Sol* pyranometer (*Pyranomètre Picard Sol* or PPS) is a radiometer that measures on a flat surface the sum of the luminous flux received from the Sun and the scattered solar light by the atmosphere after many reflections between the ground and atmosphere particles (molecules and aerosols). In clear atmospheric conditions, the received energy has a distribution as a function of time (shape with maximum at local solar noon). If there are clouds or more generally aerosols, this distribution departs from the previous shape by a decrease of the energy received by the instrument. This is seen by comparing the received energy distribution measured on an adjacent clear day. However, there are cases of enhanced solar irradiance at ground level that occur when there are high altitude cloud such as altocumulus and cirrus. This instrument detects this effect by an increase of the received energy. Figure 8 shows such an occurrence. The pyranometer detects these circumstances, but integrates the whole sky and therefore does not provide the relevant information in the direction of the Sun alone. An automatic determination of cloud type is possible with these data (Duchon & O'Malley (1999)), however, which would be interesting to combine in a future work with the information on aerosols provided by PAPS.

– The CPS visible wide-field camera and nature of the detected clouds

A *Picard Sol* visible wide-field camera (*Caméra Picard Sol* or CPS), operating in color (SBIG AllSky-340, Santa Barbara Instrument Group) is used to detect the location of clouds, which the pyranometer and photometer do not allow. This instrument permits detecting thin cirrus because of its great sensitivity and provides complementary information to the pyranometer and the photometer (aerosols). CPS brings us information about the quality of the sky (Figure 9) and high-altitude clouds.

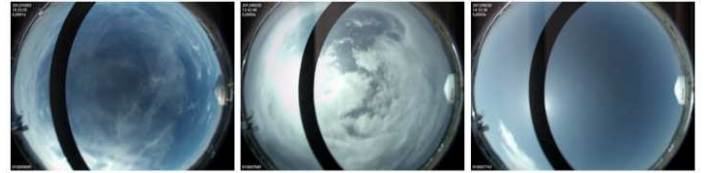


Fig. 9. Three typical situations encountered during operations that show different atmosphere transparency. They provide additional information for the instrumental calibration.

5. Picard Sol instrumental calibrations and operations

5.1. Picard Sol instrumental calibrations

5.1.1. Angular calibration for the SODISM II plate-scale determination

The knowledge of the SODISM II plate-scale is a fundamental parameter to derive an absolute value of the solar radius. Moreover, to discuss its wavelength dependence, we also need to obtain the plate-scale at different wavelengths. This can first be estimated theoretically using the appropriate optical configuration (optical thickness of the different filters, point spread function, *etc.*). However, given the level of accuracy required for our measurements, a specific experimental calibration is also required. This is achieved by observing pairs of stars selected according to their brightness and angular distances, which must be close to 30 arc-minutes. The highest acceptable magnitude is 5 and the elevation must be greater than 20 arc-degrees given the limitation of the equatorial mount and to avoid strong atmospheric refraction. Five pairs of stars have been selected for measurements at different periods of the year (Meftah et al. (2012)). Data processing includes three types of corrections:

1. proper motion of the star, parallax depending on the position of Earth around the Sun, and aberration,
2. chromatic effects, because the measurements are made without interference filter using stars of different types to infer the plate-scale conversion at the wavelength of the SODISM II measurements through an interference filter of known optical thickness,
3. thermal effects, because the measurements are made in the night-time. Thermal corrections to the focus applied for night-time star observing are weak. Indeed, our front window is inside the vacuum tank, which is controlled in temperature.

Another way for estimating SODISM II plate-scale is to use the solar radius obtained by the SODISM space instrument during the Venus transit as reference (Meftah et al. (2014a)). The synthesis associated with these three approaches is given in Table 3. Two experimental calibrations (ACPS and SRPS) lead to results that agree at a level better than 5×10^{-5} . These results and the wavelength dependence are strongly linked to the knowledge and proper modeling of the instrumental optical configuration, however. In the following, we adopt the SRPS values, with which we associate conservative uncertainties of 10^{-4} . This introduces an uncertainty of ± 0.090 arc-second on the determination of the absolute value of the solar radius.

5.1.2. SODISM II radiometric calibrations

The image data of the SODISM II solar telescope require dark-signal corrections (Hochedez et al. (2014)). SODISM II dark-

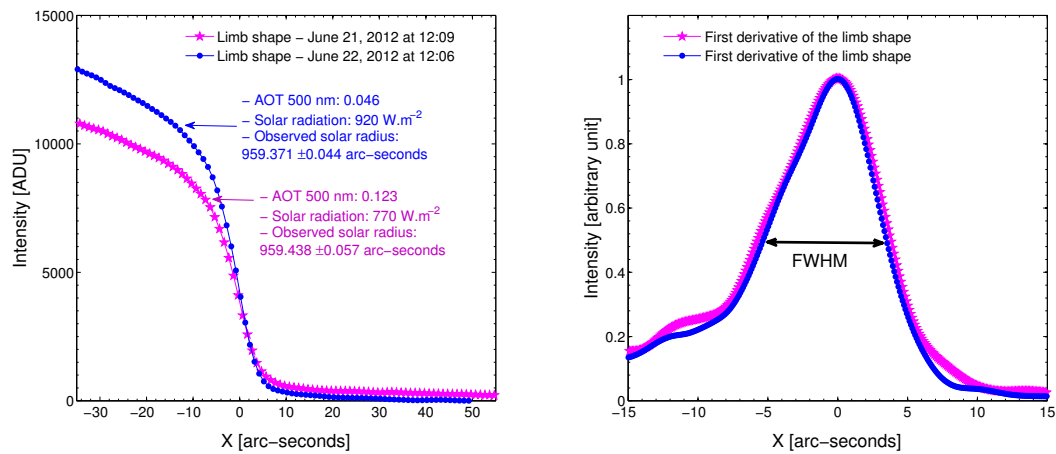


Fig. 7. (left) Atmospheric effect on limb-shape at 535.7 nm (b). (right) Evolution of the limb-shape first derivative. FWHM of the solar limb first derivative decreases as AOT decreases.

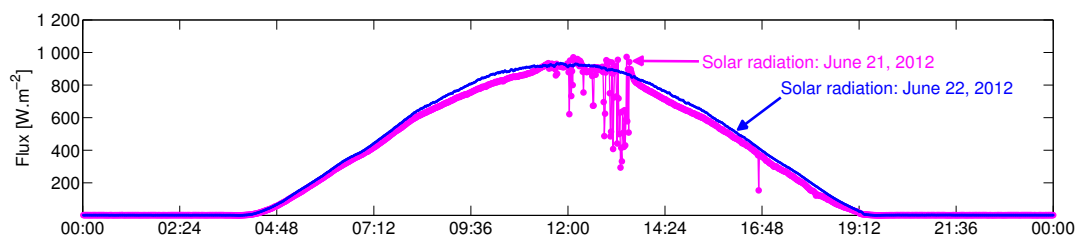


Fig. 8. Superposed solar radiation received on a horizontal plane in clear and slightly perturbed atmospheric conditions. The blue curve shows the measurement on the next day to allow a comparison with clear air conditions.

Table 3. SODISM II plate-scale for different wavelengths.

Wavelength [nm]	Optical thickness [mm]	TPS	ACPS	SRPS	SRPS - ACPS
393.37	12.328	1.060818	1.061076	1.061102	2.63×10^{-5}
535.7 (a)	12.297	1.060792	1.061057	1.061060	2.75×10^{-6}
535.7 (b)	12.303	1.060796	1.061061	1.061064	2.92×10^{-6}
607.1	12.225	1.060757	1.061016	1.061025	9.42×10^{-6}
782.2	12.341	1.060781	1.061083	1.061049	-3.40×10^{-5}
1025.0	12.080	1.060679	1.060931	1.060947	1.54×10^{-5}

Notes. The optical thickness column corresponds to a characterization of the different filters. SODISM II interference filters do not have the same optical thickness (index, thickness of optical elements used, *etc.*). Thus, each wavelength has its own plate-scale correction factor. Theoretical plate-scales (TPS in arc-second . pixel⁻¹) are obtained from an optical model using the appropriate optical configuration. Angular calibration plate-scales (ACPS in arc-second . pixel⁻¹) are obtained during specific campaigns on star doublets. SODISM reference plate-scales (SRPS in arc-second . pixel⁻¹) are obtained from the knowledge of the solar radius measured by SODISM at 607.1 nm during the Venus transit. Six digits of the TPS, ACPS, and SRPS entries are significant.

current images have been performed every day and with an exposure time of 1.4 second. All images have been corrected for dark-current.

Our images also require flat-field corrections, which consist of measurements allowing to set the pixels responsivity on the same photometric scale. This is potentially important for the precise determination of the limb-shape from which the solar radius is obtained. The whole SODISM II system must be used, including the interference filters. For flat-field measurements, the absence of clouds is mandatory, which is ensured by taking into account the observations gathered by the PAPS photometer, the PPS pyranometer, and the CPS camera. We used the method developed by Kuhn et al. (1991), which is based on the displacement of multiple images from the same source, here, the Sun. The set of images covers the CCD by scanning the Sun using

the solar mounting. During the displacement, the Sun irradiance constancy is checked by using the pyranometer data and the integrated intensity within the image. As expected, operation made around solar noon is preferable. For each wavelength, the duration of the operation is around 80 minutes for acquiring 64 images. It is difficult to ensure that we keep excellent and stable conditions over such a long period and therefore it is very difficult to obtain a good flat-field on a regular basis for all wavelengths this way. A new method based on contrast maps has been developed and is being tested. This method basically assumes that the limb darkening function (LDF) is theoretically well known at least up to 0.8 solar radius and can be removed from each image after a proper normalization. The resulting contrast map is then assimilated to a uniformly illuminated plane, and the imperfect tracking of the Sun center during an observa-

tion sequence is used to build the flat-field. The effects of active regions are eliminated by taking for each pixel a median value over the whole sequence of contrast maps (Figure 4). Our first tests have shown that the effect of flat-field corrections on the determination of the mean inflection point location is lower than 1 mas.

5.2. Picard Sol operations

The seeing monitor MISOLFA and the solar imager SODISM II have observed the Sun together since March 2011. SODISM II records full solar images at several wavelengths, with an optimal cadence of one image per minute (nominal operations since May 6, 2011). At the same time, MISOLFA records a continuous sequence of high-resolution (0.2 arc-second) and high-cadence (32 images per second) limb images at 535 nm from the two opposite sides of the solar disk as well as the temporal irradiance fluctuations on the pupil channel.

6. Data selection, SODISM II corrections, and uncertainty budget

6.1. SODISM II data selection

The main causes of perturbation acting on the solar images are the transparency of the atmosphere and turbulence. The transparency of the atmosphere is of prime importance for the quality of the measurements. Scattered light has an effect on the image contrast and the limb-shape. Correcting for it would be difficult even if the detailed structures of the aerosols cloud (solid or liquid) were known. The best way consists of performing a drastic data selection. To achieve it, we dispose of key information about the aerosols load and presence of cirrus, which is more frequent in summer (constituting June, July, and August) than in winter (December, January, and February). The additional instrumentation (photometer, pyranometer and camera) provides a quality index for solar images taken by SODISM II and allows us to reject all data that are contaminated by atmospheric effects. Figure 10 shows that in terms of atmospheric aerosol, local winter is preferable. However, the lower mean Sun elevation in winter corresponds to a higher air mass, which also affects the mean image contrast. This is why both summer and winter images can pass the data selection process. The only way to minimize the presence of aerosol or to reduce its seasonal variations would be to observe from an observatory at a higher altitude.

6.2. SODISM II corrections

6.2.1. SODISM II correction for Sun-Earth distance (Calern-Sun distance)

The average Sun-Earth distance is called the astronomical unit (1 AU is equal to 149,597,870.700 km). It is a simple matter to correct the solar radius measurements within any time to their corresponding values at 1 AU based on the well-known ephemeris (Calern observatory). An error of one minute on dating images (impact on ephemeris value) would correspond to a maximum of 1 mas uncertainty on the determination of the solar radius.

6.2.2. Refraction and SODISM II computational method

Effect of refraction on the mean solar radius is corrected. The key inputs for this correction are temperature (T), pressure (P),

and relative humidity (f_h) locally measured with the additional instrumentation. The standard conditions for Calern site are (i) $T=15^\circ\text{C}$, (ii) $P=875\text{ hPa}$, and (iii) $f_h=50\%$. For temperature, pressure, and relative humidity, we assumed uncertainties of $\Delta T=0.5^\circ\text{C}$, $\Delta P=1\text{ hPa}$, and $\Delta f_h=5\%$, which are typical for a standard weather station. Thus, the uncertainty on the correction is smaller than 20 mas for zenith distances lower than 70° . In this work, the correction for refraction is directly applied on the mean solar radius. For more accurate measurements, the corrections can be applied individually for each heliographic angle. This method should be used in future work to distinguish and understand the different effects on solar radius measurements (optical aberrations, turbulence, *etc.*).

6.2.3. Turbulence and MISOLFA measurements

The main source of uncertainty and bias for any ground-based measurement is certainly the effect of optical turbulence. Attempts to reduce this effect were historically made by using the finite Fourier transform definition of an edge on the solar disk (Brown (1982)). This definition of the solar edge is based on a filtered integral of the solar signal at the solar limb. This minimizes the influence of the varying slope of the observed LDF that is induced mostly (but not only) by the varying atmospheric conditions such as seeing and scattering. Thus, the effect of turbulence is a spreading of the limb-shape that leads to a decrease of the solar radius. In other terms, turbulence generates a biased solar radius measurement. This bias can be estimated by using a model of turbulence and a given limb-shape. The results are shown in Figure 5 using the model of Von Kàrmàn (Ikhlef et al. (2012)). The bias on solar radius is decreasing with increasing r_0 and reaches an asymptotic value that depends on the wavelength (for solar continuum). As we show below, r_0 found in our observations is around 3 cm (at 535 nm), which implies a bias correction of about 0.6 arc-second, with a root mean square (RMS) of about 0.2 arc-second (at 535.7 nm). MISOLFA and SODISM II are simultaneously operated, which allows us, in principle, to correct each solar radius. The detailed treatment of MISOLFA records is still underway, however, and in this preliminary work, we use only an average value of r_0 . In a future work, the use of monthly averages of the Fried parameter should remove most of the seasonal effects induced by turbulence, but the ultimate goal with MISOLFA is to obtain reliable estimates of r_0 every minute. The Fried monthly averaged parameter measured from 2010 to 2012 is shown in Table 4.

6.2.4. SODISM II distortion and shape of the raw image

We defined the solar radius by the inflection-point position (IPP) of the solar-limb profiles taken at different angular positions (θ) of the image. The IPP is obtained by the passage through zero of the solar limb second derivative. The shape of SODISM II raw image (contour) is obtained from the calculation of all inflection points. Figure 11 shows the raw shape of SODISM II images obtained at low zenith distance to avoid astronomical refraction effects. The shape of the image is at most one pixel (around one arc-second). Knowledge of the image shape is critical for different calibrations (plate-scale) and corrections. Measurements of solar oblateness are not achievable with SODISM II instrument. It has been established from space missions that the difference in equator-to-pole radius is smaller than 10^{-2} arc-seconds (Kuhn et al. (2012)). Thus, we can consider that the shape of the Sun is a perfect solar disk. Therefore, the shape of the image depends on

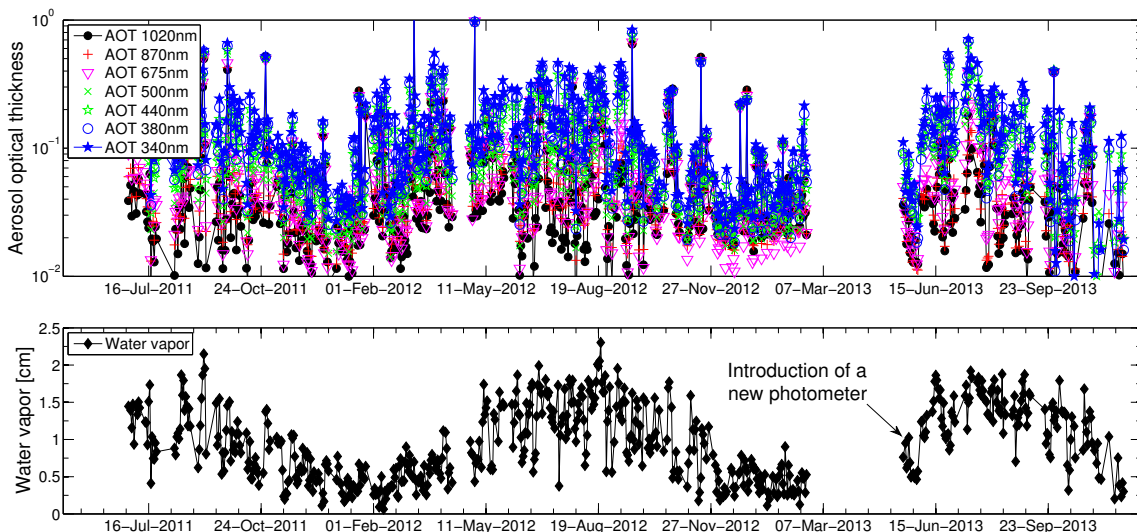


Fig. 10. Aerosols optical thickness (AOT) and water vapor content as a function of time at the observation site of Calern. The measurements obtained are part of data selection process.

Table 4. Fried parameter measurement performed between June 2010 and May 2012 (monthly median values r_0 and standard deviation σ).

Month	Jan.	Feb.	Mar.	Apr.	May	Jun.	Jul.	Aug.	Sep.	Oct.	Nov.	Dec.
r_0 [cm]	2.82	3.42	2.92	3.71	4.10	4.20	3.88	2.50	3.70	3.45	3.50	2.75
σ [cm]	0.94	1.26	1.11	1.28	1.32	1.32	1.76	1.16	1.24	1.19	0.91	0.50

the refraction, turbulence, and optical aberrations. In Figure 11, the positions of three pairs of stars used for the plate-scale calibration are shown. The values of the plate-scale deduced from the measurements of their angular distance on the CCD were corrected using the information on image distortion provided by the observed shape of the solar disk.

6.2.5. SODISM II PSF

The SODISM II point spread function (PSF) and its effect on the solar limb were studied for the nominal optical configuration (Figure 12), wherein the instrument is diffraction limited. Indeed, the SODISM II design and dimensions are such that the size of the Airy diffraction disk is about one arc-second in the bluest case, which is still larger than any of the expected aberrations. The LDF of HM98 (Hestroffer & Magnan (1998)), the COSI code for solar irradiance (Haberreiter et al. (2008a); Shapiro et al. (2010)) and 3D hydrodynamic and magneto-hydrodynamic simulations or 3D model (Piau et al. (2011)) were convolved by the theoretical PSF of the telescope, and the results for each wavelength are represented in Figure 12 (LDF, PSF, and first derivative of the LDF convolved with the instrument PSF). The first derivative of the limb is spread over about two arc-seconds, and the location of the inflection point (maximum of the first derivative) appears to be clearly defined for all LDF models. We then studied the quality of the SODISM II images to see whether a solar radius measurement can be achieved with those data. We show in Figure 7 (left panel) the solar limb intensity darkening extracted from solar images recorded at 535.7 nm (b) in two typical cases. We next compute the first derivative of these two LDFs to better evaluate their spread (right panel in Figure 7). The observational curve gives an indication of image quality. The first derivative of the solar limb recorded with

SODISM II is significantly wider than the spread expected from the model (Figure 12, bottom panel at 535.7 nm). The slope of the observed intensity profile – defined as the full width at half maximum of its first derivative – is wider than expected by ~ 6 arcsec. This might be caused by a misalignment of the optical elements (astigmatism), combined with turbulence effects, and thermo-optical effects, which can also blur the image. In itself, this does not disqualify the scientific objective since it is equivalent to having a telescope with a smaller aperture, giving the observed PSF. But it would have to be time invariant that is constant during the entire mission. Thus, we do not seek to obtain the best focus. We simply wish to have a stable instrument. The daily means of observed LDF first derivative FWHM (Figure 13) show a slight seasonal modulation, however, which is probably related to the seasonal variations of the mean elevation of the Sun in the sky, which modulates both the influence of turbulence and the mean image contrast.

6.3. SODISM II uncertainty budget for determining the solar radius

Uncertainties for the absolute accuracy of the solar radius for different wavelengths are given in Table 5. Turbulence is a major source of uncertainty. The spatial and temporal variations of the refractive index change the path of light as it travels through the atmosphere, causing image motion and blurring. Turbulence limits the resolving power of the telescope. The Fried parameter, which qualifies the observations (seeing), is the dominant element in calculating the phase fluctuation variance. Considering a Kolmogorov model, the Fried parameter (r_0) is related to the angle of arrival fluctuation variance (σ_α^2) by

$$r_0 = 8.25 \times 10^5 \times D^{-\frac{1}{5}} \times \lambda^{\frac{6}{5}} \times (\sigma_\alpha^2)^{-\frac{3}{5}}, \quad (2)$$

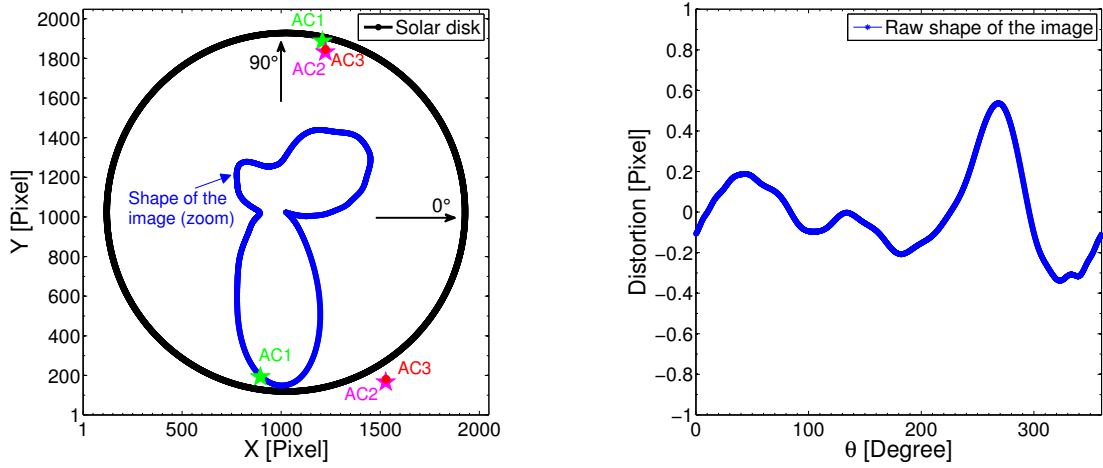


Fig. 11. (left) The solar disk as seen on the CCD shown with the black curve. The raw shape of the SODISM II image (solar radius at a given angle minus its lowest value) is represented with the blue curve. The scale is amplified by a factor of 1000. The three stellar angular calibrations (AC) that have been performed are represented by star symbols. The SODISM II plate-scale also depends on the shape of the image. (right) Average limb position vs. central angle plotted in pixel units. The shape of the image corresponds to a SODISM II optical default (astigmatism). This shape does not change significantly over time (few mas).

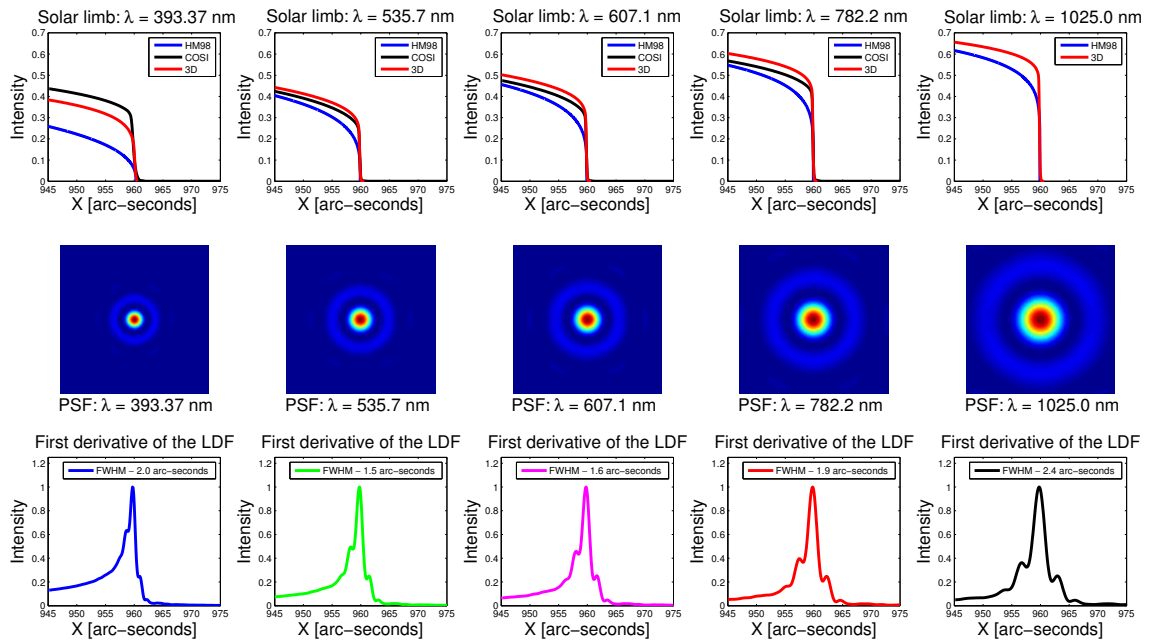


Fig. 12. (top) LDF at 393.37, 535.7, 607.1, 782.2 and 1025.0 nm, for the HM98 (empirical power-law model extrapolated to the limb), COSI models and 3D model. Their convolution with the nominal PSF of SODISM II is dominated by diffraction. (middle) SODISM II PSF for each wavelength. These PSF have been estimated by an optical model of SODISM II. (bottom) First derivative of the convolution between the two observables (LDF and PSF). It can be verified visually that the FWHM of the first derivative of the solar limb is about two arc-seconds.

where D is the aperture of the telescope (m) and λ is the wavelength (m). This equation was used to compute the Fried parameter, and some results shown in the Table 4. It is predicted from the Kolmogorov theory of turbulence, and the known dispersion of air, that the Fried parameter varies with wavelength as $r_0 \propto \lambda^{6/5}$. As mentioned above, the average Fried parameter r_0 is 3.41 cm at 535 nm. Thus, from the proportional relationship, we can determine the different values of r_0 for SODISM II different wavelengths (3.97 cm at 607.1 nm, 5.38 cm at 782.2 nm and 7.44 cm at 1025.0 nm). Therefore, we know the

bias and the associated uncertainty on solar radius measurement for each wavelength (540 ± 170 mas at 535.7 nm, 410 ± 160 mas at 607.1 nm, 160 ± 90 mas at 782.2 nm and 60 ± 50 mas at 1025.0 nm), and that from Figure 5.

The SODISM II instrument is thermally controlled and appears to be robust against changes on the order of few microns or a few degrees of temperature (Meftah et al. (2014b)). Temperatures of the instrument (housekeeping) are measured, and their variations (thermal effects) introduce an uncertainty

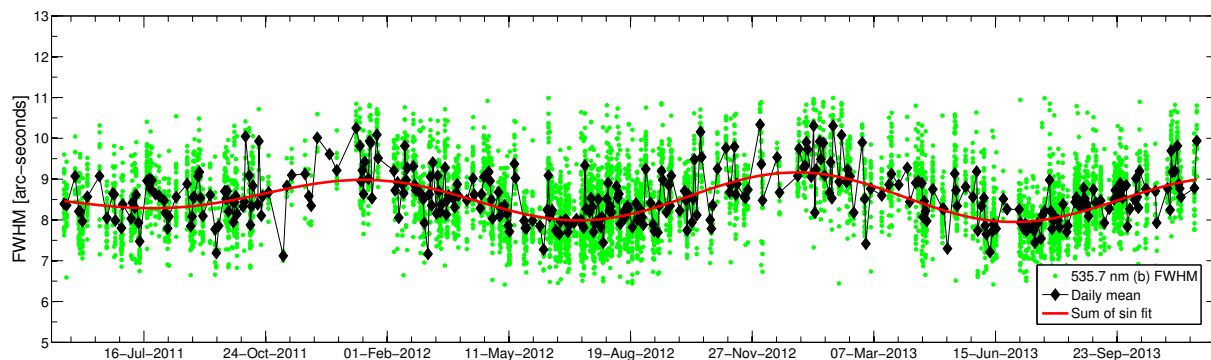


Fig. 13. Evolution of the solar limb first derivative FWHM at 535.7 nm (b) since the beginning of the mission (green dot). The black curve with diamond symbols corresponds to the FWHM of the daily mean at 535.7 nm (b).

smaller than 10 mas on the determination of the solar radius (for each wavelength).

Table 5. SODISM II uncertainties for all wavelengths.

Uncertainty sources	535.7 (a)	607.1	782.2	1025.0	Type
Angular calibration	90	90	90	90	Random
Aerosols	–	–	–	–	D ^a
Calern-Sun distance	≤1	≤1	≤1	≤1	Random
Refraction	≤20	≤20	≤20	≤20	Random
Turbulence	170	160	90	50	Random
Optical distortion	–	–	–	–	C ^c
PSF	–	–	–	–	C ^c
Scattered light	–	–	–	–	N ^b
Pointing	–	–	–	–	D ^a
Thermal effects	≤10	≤10	≤10	≤10	Random

Notes. All values are in mas.

^(a) D: Data selection. ^(b) N: Negligible. ^(c) C: Calibration.

7. Results and discussion

7.1. Solar radius determination

7.1.1. Mean solar radii obtained after refraction correction

An evolution of the solar radius measurements obtained with SODISM II (SRPS reference) is shown in Figure 14 as a function of time for different wavelengths and after refraction correction. From these corrected measurements, a mean solar radius for each wavelength is given in Table 6. The SODISM II mean radius of 959.237 arc-seconds (with $\sigma=0.25$ arc-seconds) at 535.7 nm (a) is deduced from 20,300 measurements. This is our reference time-series (comparison with historical measurements made at Calern). The various evolutions indicate that with increasing wavelength (solar continuum) the mean solar radius increases. At 393.37 nm, chromospheric emissions are recorded. Given its location above the photosphere, the solar radius is larger than those measured by using photospheric emissions. There is a difference of 700 mas compared with our reference wavelength. Without turbulence and with a perfect instrument, this difference must be on the order of 400 mas. This channel requires a special analysis.

Table 6. SODISM II mean solar radius (R) for each wavelength and standard deviation (S at 1σ) of the daily mean values after refraction correction.

Wavelength [nm]	N	d	R	S
393.37	11,309	367	959.940''	0.106''
535.7 (a)	20,300	374	959.237''	0.125''
535.7 (b)	11,391	376	959.286''	0.103''
607.1	11,342	350	959.452''	0.126''
782.2	11,351	375	959.716''	0.099''
1025.0	11,759	375	959.772''	0.181''

Notes. N is the total number of measurements gathered between May 2011 and December 2013, and d is the number of observation days.

7.1.2. Mean solar radii obtained after turbulence correction

The final SODISM II results (solar continuum), after making all necessary corrections described in the previous sections, are listed in the Table 7. The value of the solar radius is found to be equal to 959.777 arc-seconds at 535.7 nm (a), while the estimated uncertainties of the measurements are typically smaller than 0.2 arc-seconds. At 1025.0 nm, the solar radius is smaller than those found at 607.1 nm and 782.2 nm.

Table 7. SODISM II mean solar radii and associated combined standard uncertainties after turbulence correction.

Wavelength [nm]	535.7 (a)	607.1	782.2	1025.0
Radius ^a [']	959.237	959.452	959.716	959.772
Estimated r_0 [cm]	3.41	3.97	5.38	7.44
Turbulence bias [']	0.54	0.41	0.16	0.06
Corrected radius [']	959.777	959.862	959.876	959.832
Uncertainty - 1σ [']	0.194	0.185	0.129	0.105

Notes. Results shown for each wavelength are obtained with quasi-identical exposure time.

^(a) Refraction correction only.

7.2. Solar radius variability

The current solar cycle is probably going to be the weakest in 100 years, which is an unprecedented opportunity for studying the variability of the solar radius during this period. The SODISM II measurements we made are reproducible. We did not

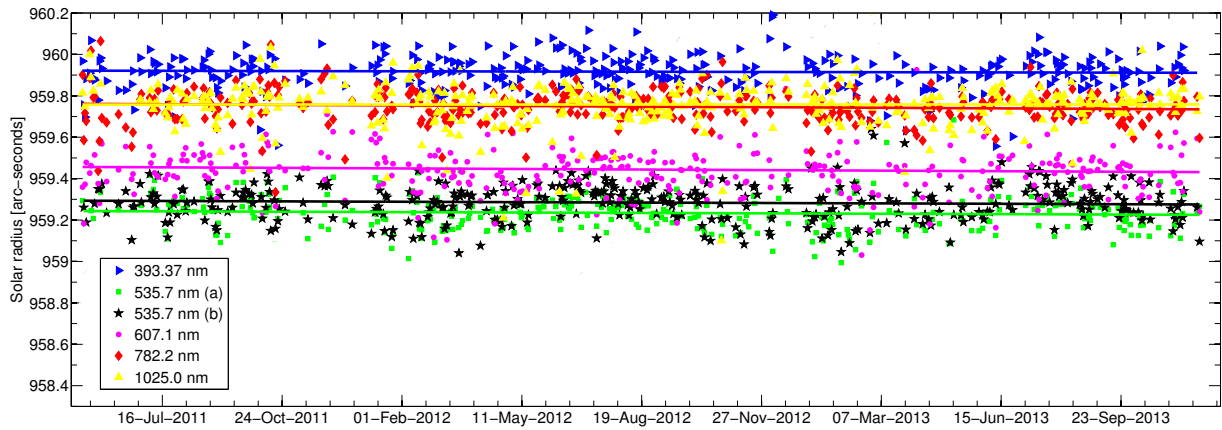


Fig. 14. Daily mean SODISM II observed solar radius with refraction correction as a function of time for different wavelengths. For all wavelengths, we obtained a negative slope of about 12 mas per year, which is not significant when compared with the 1σ uncertainty obtained on the mean radius (between 100 and 200 mas in Table 6). Any long-term instrumental degradation of the PSF or focus would lead to a slightly lower radius estimate.

observe any significant degradation. The solar radius observed with SODISM II results from variations smaller than 50 mas that are out of phase with solar activity. Solar radius variations for SODISM II and different instruments are plotted in Figure 2, showing inconsistent results. Nevertheless, we can observe the measurement continuity between SODISM II and MDI.

7.3. Spectral dependence of solar continuum radius

One of the objectives of the PICARD mission is to deduce the spectral dependence of the solar limb profile. A study of the shape of the solar limb (models and observations) was carried out by Thuillier et al. (2011). Several kinds of solar atmosphere models were compared. Some models are constructed empirically for instance that of HM98, but contain no IPP. Others use theoretical models, such as VAL81 (Vernazza et al. (1981)), FCH09 (Fontenla et al. (2009)), and COSI, or are based on physical principles, such as SH09 (Short & Hauschildt (2009)). Finally, others use 3D numerical simulations. Table 8 compares the IPP for four wavelengths. The different solar models show the same trend and their predictions agree well. The differences (Δ IPP) of the inflection-point position at 607.1 nm, 782.2 nm and 1025.0 nm from the IPP reference at 535.7 nm are smaller than thirty mas for the different models, but numerous studies of solar radius variation at different wavelengths appear in the literature that show a higher wavelength dependence, but with conflicting results. These measurement differences are most likely dominated by a poor correction of the wavelength dependence of instrumental (plate-scale, PSF, *etc.*) and atmospheric effects and not on the weak wavelength dependence of the solar LDF itself in the photospheric continuum.

From a theoretical model, we analyzed the impact of an instrumental effect on the inflection-point position. Figure 15 highlights the impact of an optical aberration (astigmatism) on our fine metrology measurements. The trend we see with the instrument is real. Indeed, three interference filters are from the same fabrication batch (535.7, 607.1, and 782.2 nm). A more detailed laboratory measurement of the instrument PSF can help us to refine this result. At 1025.0 nm, the result is more delicate. For this wavelength, we manufactured the interference filter after all others. There may be a low deviation in the determination of the optical thickness. Moreover, for this wavelength the quantum ef-

Table 8. Difference (Δ IPP) of the inflection-point position at 607.1 nm, 782.2 nm, and 1025.0 nm from the IPP reference at 535.7 nm (a) for different solar models.

Wavelength (λ)	607.1 nm	782.2 nm	1025.0 nm
Δ IPP VAL81	11.9	30.2	–
Δ IPP FCH09	13.6	32.8	–
Δ IPP SH09	9.4	21.2	–
Δ IPP COSI	10.0	28.0	–
Δ IPP 3D	13.5	25.0	21.0
SODISM II Δ IPP	85.0	99.0	55.0

Notes. SODISM II Δ IPP represents the values obtained by measurement. All values are in mas.

iciency of the CCD is poor and the difference between the mean corrections introduced for turbulence (Table 7) is 100 mas between 782.2 nm and 1025.0 nm. This is based on the theoretical $\lambda^{6/5}$ dependence of r_0 , but needs to be confirmed experimentally.

7.4. Discussion

The SODISM II mean radius value without turbulence correction (959.24 arc-seconds) obtained at 535.7 nm (a) is slightly lower than the mean value obtained by the two historic instruments (Solar Astrolabe and DORAYSOL) installed at Calern observatory (959.51 arc-seconds). Unfortunately, Solar Astrolabe and DORAYSOL are no longer in operation and simultaneous measurements could not be made to date. The SODISM II mean radius value obtained at 535.7 nm (b, 8.9 s) is slightly greater (50 mas) than 535.7 nm (a, 1.3 s), but the difference is within their uncertainties and they show the robustness of our instrumentation (almost equivalent results with two different interferential filters and with different exposure times). Thus, at 535.7 nm, we find a solar radius of 959.78 ± 0.19 arc-seconds, which is slightly higher but still compatible with the canonical solar radius (Auwers (1891)).

For SODISM II at 607.1 nm, we found a solar radius of 959.86 ± 0.18 arc-seconds during the period 2011–2013. This result is also very similar to that obtained with the HMI instrument (959.90 ± 0.06 arc-seconds) during the last Venus transit. These results obtained with different instruments and methods

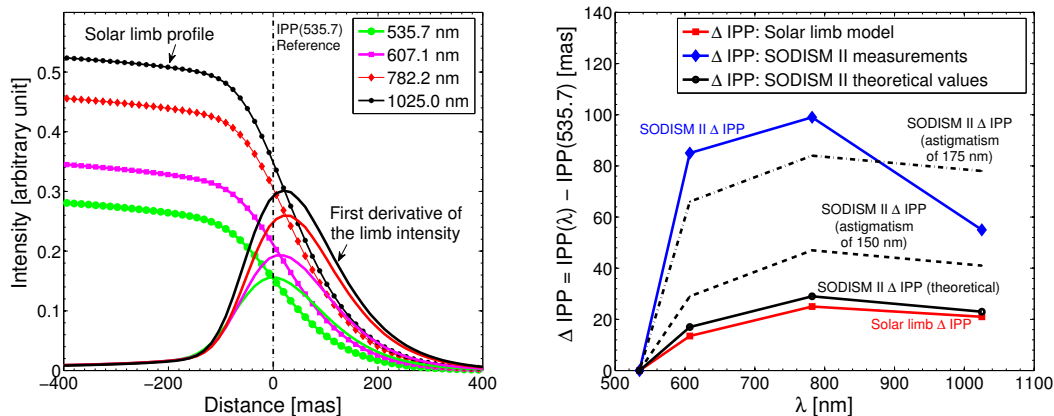


Fig. 15. (left) LDF at 535.7, 607.1, 782.2 and 1025.0 nm, for theoretical solar models. First derivative of the LDF for each wavelength. Location of the IPP(535.7) reference position. (right) The red curve with circle symbol represents ΔIPP as a function of wavelength for 3D solar model. The blue curve with diamond symbols represents ΔIPP as a function of wavelength for SODISM II measurements. The black curves represents ΔIPP as a function of wavelength for SODISM II theoretical results (convolution between LDF and PSF for three different cases).

highlight a probable underestimation of the solar radius canonical value (959.63 arc-seconds) or a slight evolution since the eighteenth century. On the other hand, our results at all wavelengths lead us to suspect an overestimation of the solar radius obtained with the MDI instrument (960.12 ± 0.09 arc-seconds). From radiative transfer simulations, we do not expect a variation of more than 20 mas between the measurements made at different wavelengths of the photospheric continuum. We have shown, however, that chromatic effects of astigmatism can contribute significantly to establish such a wavelength dependence in the measurements. From the ground, the bias introduced by optical turbulence is also dependent on the wavelength, and an inappropriate correction would also lead to different results.

At 1025.0 nm, we initiated a new time-series and found a solar radius of 959.83 arc-seconds during the period 2011-2013. This wavelength is interesting because it is less sensitive to either optical turbulence and atmospheric absorption. Our detector performs less well in this spectral range, however, and we estimate that our best result in the present instrumental configuration is probably obtained at 782.2 nm (solar radius of 959.88 ± 0.13 arc-seconds).

The future work will be an even more detailed study of the instrumental and atmospheric turbulence effects and their uncertainty budget contribution. In addition, we have set up additional instrumentation to monitor various aspects of the instantaneous atmospheric conditions. A detailed analysis can also be conducted to verify the minor effects of aerosols on the solar radius measurements made by SODISM II. So far, we did not find any correlation between solar radius measurements and aerosol optical thickness or water vapor, which is less strong in winter. A seasonal effect still exists on the solar radius measurements after correction for refraction, but it is very likely related to the variation of the daily mean zenith distance, which enhances both the effects of atmospheric extinction and turbulence. The most important parameters are the refraction and the optical turbulence. Scattering of the solar light by aerosols is not dominant.

Solar cycle #24 is particularly low, and as mentioned above, we find no significant correlation between solar activity or TSI and the variation of the solar radius. This finding is the same as that performed by SDS or MDI (Sofia et al. (2013); Bush et al. (2010)). During the rising phase of cycle 24, however, we find much lower variations than those observed by SDS instrument over previous cycles. Only two and half years have been ana-

lyzed so far, but our first results show a remarkable stability at all wavelengths while the cycle was rising. This is consistent with the results obtained by MDI, which showed no significant variations of the solar radius in correlation or anticorrelation with activity over cycle 23.

8. CONCLUSION

At Calern (France), a set of instruments was installed to carry out solar radius measurements with the capability of distinguishing the atmospheric effect that might affect them. These effects are turbulence and aerosols scattering. The photometer provides a quality index of pictures taken by SODISM II (aerosol optical thickness and water vapor). The pyranometer measures the solar irradiance at ground level and provides another quality index for SODISM II measurements. A camera also contributes to data selection. These instruments allow us to discard contaminated data. Because turbulence effects cannot be avoided, an instrument is dedicated to measure this. SODISM II provides a nearly continuous record of the solar radius at different wavelengths since May 2011. MISOLFA measures the spatio-temporal parameters of the local turbulence since 2010. Currently, given the noise affecting its measurements, only monthly averages are used. The average Fried parameter r_0 is 3.41 cm for the period of observations reported here. We showed that it is possible to quantify the effect of aerosols through an associated modulation transfer function (MTF) that can be multiplied to the optical turbulence MTF to estimate the overall atmospheric MTF (*e.g.*, Dror & Kopeika (1995)). Therefore aerosols potentially have an impact on image spread, but it is expected to be small when observing the Sun from the heated ground where most of the optical turbulence is generated. Our first results presented here confirm that to first order, the effect of aerosols is rather only extinction and that optical turbulence is the only significant effect that contributes to the image spread. A detailed analysis of the PAPS records will help us in the future to determine the potential minor effects caused by aerosols. In this work, data selection was made mainly with the PAPS, PPS, and CPS. We are still working to improve the MISOLFA signal-to-noise ratio and pipeline, however, to derive estimates of r_0 every minute. We have shown (Figure 7 of Ikhlef et al. (2012)) that at given moments the r_0 value can be as high as 8 cm, which is significantly higher than the monthly average value. From Figure 5, we see that the bias introduced by turbu-

lence is low and remains roughly constant for r_0 above 7 cm. Selecting these particular images would therefore effectively lead to a series with a lower bias introduced by turbulence and lower uncertainties associated with the estimated bias corrections.

Main corrections to the observed radius of the Sun are (i) atmospheric refraction (at most ~ 1.0 arc-second), and (ii) seeing, which generates a bias lower than ~ 0.5 arc-second, which is wavelength dependent. The SODISM II solar radius at 535.7 nm, after making all necessary corrections, is close to 959.78 arc-seconds, while the estimated uncertainties of the measurements are typically smaller than 0.2 arc-second. For other wavelengths of the SODISM II instrument, the solar radii are close to 959.9 arc-seconds.

The solar radius observed with SODISM II (during the period 2011-2013) results from variations smaller than 50 mas and it is out of phase with solar activity. A continuation of PICARD ground-based segment will allow us to confirm our observations about the variations of the solar radius.

Acknowledgements. This project is a collaboration between LATMOS, OCA, and CRAAG and is supported by CNES and CNRS. We thank CNES (Centre National d'Etudes Spatiales), CNRS (Centre National de la Recherche Scientifique), Laboratoire d'Optique Atmosphérique (University of Lille 1), and LESIA (Laboratoire d'Etudes Spatiales et d'Instrumentation en Astrophysique) for their support as well as all the participants who have devoted their expertise to this project. Numerous individuals have been involved in this project. They are all gratefully acknowledged for their respective contributions, although they cannot be listed here because many of them joined the development for only few months. The following institutes are acknowledged for providing the data: Solar Influences Data Center (Belgium), the "Physikalisch-Meteorologisches Observatorium Davos" (PMOD, Switzerland) and the Hansen Experimental Physics Laboratory (HEPL, Stanford University, United States). We especially want to thank Rock Bush (HEPL team, Stanford University) who provided data from the MDI instrument. We also thank Alexander Shapiro and Werner Schmutz (PMOD) who provided COSI solar models at wavelengths associated with our instrument. We would like to thank Farokh Vakili (Head of Côte d'Azur Observatory) for his support and provision of Calern site means. Finally, we thank the referee and the Editor for the constructive remarks and suggestions. This work is dedicated to the memory of Francis Laclare, who inspired a generation of astrophysicist to consider the measurement and interpretation of the solar diameter.

References

- Adassuriya, J., Gunasekera, S., & Samarasingha, N. 2011, *Sun and Geosphere*, 6, 17
- Assus, P., Borgnino, J., Martin, F., et al. 2002, in *Astronomical Society of the Pacific Conference Series*, Vol. 266, *Astronomical Site Evaluation in the Visible and Radio Range*, ed. J. Vernin, Z. Benkhaldoun, & C. Muñoz-Tuñón, 134
- Auwers, A. 1891, *Astronomische Nachrichten*, 128, 361
- Badache-Damiani, C., Rozelot, J. P., Coughlin, K., & Kilifarska, N. 2007, *MNRAS*, 380, 609
- Ball, W. T., Unruh, Y. C., Krivova, N. A., et al. 2012, *A&A*, 541, A27
- BenMoussa, A., Gissot, S., Schühle, U., et al. 2013, *Sol. Phys.*, 288, 389
- Braun, H., Christl, M., Rahmstorf, S., et al. 2005, *Nature*, 438, 208
- Brown, T. M. 1982, *A&A*, 116, 260
- Brown, T. M. & Christensen-Dalsgaard, J. 1998, *ApJ*, 500, L195
- Bush, R. I., Emilio, M., & Kuhn, J. R. 2010, *ApJ*, 716, 1381
- Corbard, T., Irbah, A., Assus, P., et al. 2010, *Astronomische Nachrichten*, 331, P58
- Coulter, R. L., Kuhn, J. R., & Lin, H. 1996, in *Bull. Am. Astron. Soc.*, Vol. 28, *AAS Meeting Abstracts #188*, 912
- Delache, P. & Kroll, R. J. 1994, Booktitle: *The Solar Engine and its Influence on Terrestrial Atmosphere and Climate*. Editor: Nesme-Ribes, E., 193
- Dror, I. & Kopeika, N. S. 1995, *Journal of the Optical Society of America A*, 12, 970
- Duchon, C. E. & O'Malley, M. S. 1999, *Journal of Applied Meteorology*, 38, 132
- Eddy, J. A. & Boornazian, A. A. 1979, in *Bulletin of the American Astronomical Society*, Vol. 11, *Bulletin of the American Astronomical Society*, 437
- Emilio, M., Kuhn, J. R., Bush, R. I., & Scholl, I. F. 2012, *ApJ*, 750, 135
- Fontenla, J. M., Curdt, W., Haberreiter, M., Harder, J., & Tian, H. 2009, *ApJ*, 707, 482
- Foukal, P., Fröhlich, C., Spruit, H., & Wigley, T. M. L. 2006, *Nature*, 443, 161
- Gilliland, R. L. 1981, *ApJ*, 248, 1144
- Haberreiter, M., Schmutz, W., & Hubeny, I. 2008a, *A&A*, 492, 833
- Haberreiter, M., Schmutz, W., & Kosovichev, A. G. 2008b, *ApJ*, 675, L53
- Hauchecorne, A., Meftah, M., Irbah, A., et al. 2014, *ApJ*, 783, 127
- Hestroffer, D. & Magnan, C. 1998, *A&A*, 333, 338
- Hochedez, J.-F., Timmermans, C., Hauchecorne, A., & Meftah, M. 2014, *A&A*, 561, A17
- Holben, B. N., Tanré, D., Smirnov, A., et al. 2001, *J. Geophys. Res.*, 106, 12067
- Ikhlef, R., Corbard, T., Irbah, A., et al. 2012, in *Society of Photo-Optical Instrumentation Engineers Conference Series*, Vol. 8444, SPIE
- Irbah, A., Chibani, M., Lakhali, L., et al. 2001, in *SF2A-2001: Semaine de l'Astrophysique Française*, ed. F. Combes, D. Barret, & F. Thévenin, 59
- Irbah, A., Corbard, T., Assus, P., et al. 2010, in *Society of Photo-Optical Instrumentation Engineers Conference Series*, Vol. 7735, SPIE
- Kuhn, J. R., Bush, R. I., Emilio, M., & Scholl, I. F. 2012, *Science*, 337, 1638
- Kuhn, J. R., Bush, R. I., Emilio, M., & Scherrer, P. H. 2004, *ApJ*, 613, 1241
- Kuhn, J. R., Lin, H., & Loran, D. 1991, *PASP*, 103, 1097
- Laclare, F., Delmas, C., Coin, J. P., & Irbah, A. 1996, *Sol. Phys.*, 166, 211
- Laclare, F., Delmas, C., Sinceac, V., & Chollet, F. 1999, *Académie des Sciences Paris Comptes Rendus Serie B Sciences Physiques*, 327, 645
- Lakhali, L., Irbah, A., Bouzaria, M., et al. 1999, *A&AS*, 138, 155
- Meftah, M., Hauchecorne, A., Crepel, M., et al. 2014a, *Sol. Phys.*, 289, 1
- Meftah, M., Hochedez, J.-F., Irbah, A., et al. 2014b, *Sol. Phys.*, 289, 1043
- Meftah, M., Irbah, A., Corbard, T., et al. 2012, in *Society of Photo-Optical Instrumentation Engineers Conference Series*, Vol. 8446, SPIE
- Morand, F., Delmas, C., Corbard, T., et al. 2010, *Comptes Rendus Physique*, 11, 660
- Parkinson, J. H., Morrison, L. V., & Stephenson, F. R. 1980, *Nature*, 288, 548
- Piau, L., Stein, R. F., Melo, S., et al. 2011, in *SF2A-2011: Proceedings of the Annual meeting of the French Society of Astronomy and Astrophysics*, ed. G. Alecian, K. Belkacem, R. Samadi, & D. Valls-Gabaud, 407–410
- Ribes, E., Beardsley, B., Brown, T. M., et al. 1991, Booktitle: *The Sun in Time*. Editor: Sonett, C. P. and Giampapa, M. S. and Matthews, M. S., 59
- Rozelot, J. P. 2001a, *Journal of Atmospheric and Solar-Terrestrial Physics*, 63, 375
- Rozelot, J. P. 2001b, *Journal of Atmospheric and Solar-Terrestrial Physics*, 63, 2005
- Rozelot, J. P. & Damiani, C. 2012, *European Physical Journal H*, 37, 709
- Scherrer, P. H., Schou, J., Bush, R. I., et al. 2012, *Sol. Phys.*, 275, 207
- Schou, J., Scherrer, P. H., Bush, R. I., et al. 2012, *Sol. Phys.*, 275, 229
- Schröder, W. 2001, *Journal of Atmospheric and Solar-Terrestrial Physics*, 63, 2003
- Shapiro, A. I., Schmutz, W., Schoell, M., Haberreiter, M., & Rozanov, E. 2010, *A&A*, 517, A48
- Short, C. I. & Hauschildt, P. H. 2009, *ApJ*, 691, 1634
- Sofia, S., Chiu, H.-Y., Maier, E., et al. 1984, *Applied Optics*, 23, 1235
- Sofia, S., Girard, T. M., Sofia, U. J., et al. 2013, *MNRAS*, 436, 2151
- Spruit, H. C. 1991, in *The Sun in Time*, ed. C. P. Sonett, M. S. Giampapa, & M. S. Matthews, 118–158
- Thuillier, G., Claudel, J., Djafer, D., et al. 2011, *Sol. Phys.*, 268, 125
- Thuillier, G., Dewitte, S., & Schmutz, W. 2006, *Advances in Space Research*, 38, 1792
- Toulmonde, M. 1997, *A&A*, 325, 1174
- Vernazza, J. E., Avrett, E. H., & Loeser, R. 1981, *ApJS*, 45, 635
- Wittmann, A. 1977, *A&A*, 61, 225