



HAL
open science

Evaluating the genetic effects of the invasive *Ocenebra inornata* on the native oyster drill *Ocenebra erinacea*

Eric Pante, Pierre-Yves Pascal, Vanessa Becquet, Amélia Viricel, Benoit Simon-Bouhet, Pascale Garcia

► To cite this version:

Eric Pante, Pierre-Yves Pascal, Vanessa Becquet, Amélia Viricel, Benoit Simon-Bouhet, et al.. Evaluating the genetic effects of the invasive *Ocenebra inornata* on the native oyster drill *Ocenebra erinacea*. *Marine Ecology*, 2015, 36 (4), pp.1118-1128. 10.1111/maec.12208 . hal-01064464

HAL Id: hal-01064464

<https://hal.science/hal-01064464>

Submitted on 17 Sep 2014

HAL is a multi-disciplinary open access archive for the deposit and dissemination of scientific research documents, whether they are published or not. The documents may come from teaching and research institutions in France or abroad, or from public or private research centers.

L'archive ouverte pluridisciplinaire **HAL**, est destinée au dépôt et à la diffusion de documents scientifiques de niveau recherche, publiés ou non, émanant des établissements d'enseignement et de recherche français ou étrangers, des laboratoires publics ou privés.

1
2
3 1 **Evaluating the genetic effects of the invasive *Ocenebra inornata* on the native oyster drill**

4
5 2 ***Ocenebra erinacea***

6
7
8 3

9
10
11 4 Eric Pante¹, Pierre-Yves Pascal², Vanessa Becquet¹, Amélia Viricel¹, Benoit Simon-Bouhet¹,
12
13 5 and Pascale Garcia¹

14
15
16 6

17
18 7 ¹ Littoral, Environnement et Sociétés (LIENSs) UMR 7266 CNRS – Université de La
19
20
21 8 Rochelle, 2 rue Olympe de Gouges, 17000 La Rochelle, France.

22
23 9 ² Systématique-Adaptation-Evolution, Equipe Biologie de la Mangrove, Laboratoire de
24
25
26 10 Biologie Marine, UMR 7138 CNRS-MNHN-UPMS, Université des Antilles et de la Guyane,
27
28 11 BP 592 F-97159 Pointe-à-Pitre cedex, Guadeloupe, France

29
30
31 12

32
33 13 Keyword: *Ocenebra erinaceus*; *Ocenebrellus inornatus*; haplotype diversity; evolutionary
34
35 14 response; evolutionary ecology; invasive species; glacial refugium; cryptic species

36
37
38 15
39
40
41
42
43
44
45
46
47
48
49
50
51
52
53
54
55
56
57
58
59
60

16 **Abstract**

17

18 Studies focusing on the effect of invasive species on the genetic diversity of native marine
19 invertebrates remain scant. Here we report diversity among French populations of the
20 intertidal gastropod *Ocenebra erinacea* (Linnaeus, 1758) sampled in the presence and absence
21 of the invasive *Ocenebra inornata* (Recluz, 1851). Between 1999 and 2004 a total of 352
22 individuals of *O. erinacea* were collected from 15 sites, five of which in the presence of the
23 invasive, and genotyped at the mitochondrial locus *coxI*. No statistical difference was
24 observed between polymorphism levels recorded within native populations exposed to the
25 invasive, compared to populations sampled in the absence of *O. inornata*. No sign of native
26 population decline was detected in response to the invader. While significant shifts in native
27 *O. erinacea* population sizes were previously reported in the literature, genetic effects may
28 take longer to accumulate, or may be undetectable without a larger panel of genetic markers.
29 In contrast, large genetic distances and significant population differentiation were recorded
30 between Atlantic and Mediterranean *O. erinacea* samples, suggesting that these populations
31 have distinct evolutionary histories. Comparison of genetic divergence within the closely-
32 related genus *Nucella* suggests that the Atlantic populations and the Mediterranean *O.*
33 *erinacea* populations from Thau Lagoon may belong to different species or subspecies.

34

1
2
3 35 **Introduction**
4
5
6 36
7
8
9 37

10 Natural movements of species ranges on the surface of the world (expansions,
11 regressions, displacements) play a considerable role in the evolution of species. Most of the
12 time, these phenomena are progressive and marked by the tempo of geological processes (e.g.
13 Hewitt 1996). However, during the last few decades a growing number of species has
14 undergone changes in their natural range due to both changes at a global scale (e.g. Parmesan
15 & Yohe 2003) and artificial transfers due to human activities (e.g. Carlton 1989; Seebens *et al.*
16 2013).
17
18
19
20
21
22
23

24 The number of biological invasions has strongly increased during the last decades (e.g.
25 Mack *et al.* 2000; Mooney & Cleland, 2001; Ruiz *et al.* 2000). In the marine environment,
26 these phenomena are mainly due to aquaculture and especially to shellfish farming, which
27 represents a major cause of introduction, intentional or not, of exogenous species (Elton 1958;
28 Carlton 1992).
29
30
31
32
33
34
35

36 Apart from potentially important economic consequences, the arrival of these
37 introduced species can also cause serious ecological impacts on local fauna. Introduced
38 species are likely to decrease the abundance of indigenous species, excluding them from part
39 of their distributional area or even causing their extinction by modifying invaded habitats,
40 hybridizing with native species, exchanging pathogens, preying on them, or competing with
41 them (e.g. Lockwood *et al.* 2007 and references therein). Moreover, when they exert strong
42 selective pressures, introduced species can also reduce the genetic diversity of native
43 populations (Kim *et al.* 2003; Wittmann *et al.* 2013).
44
45
46
47
48
49
50
51
52
53

54 Such impacts, although poorly known (e.g. Strauss *et al.* 2006), may have heavy
55 ecological consequences since adaptive potential depends on the genetic diversity of a
56
57
58
59
60

1
2
3 59 population. Reductions in genetic diversity are generally considered detrimental (e.g.
4
5 60 Frankham 1995; Lande 1995; Strauss *et al.* 2006) and might contribute to extinction
6
7 61 (Wittmann *et al.* 2013). Thus, various authors showed a link between the fitness of a species
8
9 62 and its genetic diversity, particularly in mollusks (Mitton & Grant 1984; Garton & Haag 1991;
10
11 63 Zouros 1993; Launey & Hedgecock 2001; Hedgecock *et al.* 2007). In addition, the reduced
12
13 64 genetic variability of an indigenous population could promote the expansion process of other
14
15 65 species that are phylogenetically close. However, very few studies address changes in genetic
16
17 66 diversity of an indigenous species under the competitive pressure generated by a biological
18
19 67 invader.
20
21
22

23 68 The oyster drills *Ocenebra erinacea* (Linnaeus, 1758) and *Ocenebra inornata* (Recluz,
24
25 69 1851) constitute a noteworthy model to study the genetic effects of indigenous-invasive
26
27 70 interactions on indigenous populations. A native of the northwestern Pacific (Choe & Park
28
29 71 1997; Amano & Vermeij 1998), *O. inornata* (previously known as *Ocenebrellus inornatus*;
30
31 72 see Houart and Sirenko 2003; Bouchet and Houart 2014) has recently invaded European
32
33 73 coasts, probably following massive oyster imports (Pigeot 2000; De Montaudouin & Sauriau
34
35 74 2000; review of Lützen *et al.* 2012). Genetic data suggest that French populations may come
36
37 75 from Asia and the United States (Martel *et al.* 2004a). The introduction of *O. inornata* may
38
39 76 have important economical consequences, as it is a predator of cultivated mollusks (e.g.
40
41 77 oysters, blue mussels, Gouletquer *et al.* 2002). It coexists at several French sites with an
42
43 78 indigenous muricid, *O. erinacea* (Linnaeus, 1758), which ranges from the straits of Gibraltar
44
45 79 to the Netherlands, and inhabits all British and Mediterranean coasts (Graham 1988).
46
47
48 80 Although *O. erinacea* and *O. inornata* differ in some life history traits (Martel *et al.* 2004c),
49
50 81 these muricid gastropods fill similar ecological niches, and may compete for habitat (both
51
52 82 species live on hard substrates and drill the shell of bivalves to feed on them; e.g. Lützen *et al.*
53
54 83 2012). Pigeot *et al.* (2000) recorded a decrease in population density of *O. erinacea*, in
55
56
57
58
59
60

1
2
3 84 parallel to an increase in numbers of *O. inornata* in Marennes-Oléron (Charente-Maritime,
4
5 85 France), between 1997 and 1999 (two years after the invasive was first detected). While the
6
7 86 introduction and expansion patterns of *O. inornata* have been investigated in previous studies
8
9 87 (Martel *et al.* 2004a; Martel *et al.* 2004b), its ecological impacts on the native *O. erinacea* are
10
11 88 poorly known.

12
13
14 89 In previous studies (Martel 2003), seven allozyme loci were analyzed on populations
15
16 90 of *Ocenebra erinacea* and *Ocenebra inornata* collected in 7 sites of the French Atlantic coast
17
18 91 where the two species live in sympatry. These markers revealed genetic diversity indices
19
20 92 systematically weaker within the native *O. erinacea* than within the invasive *O. inornata*. This
21
22 93 result was counterintuitive, as (i) the founder effect linked to an introduction event should lead
23
24 94 to a low genetic diversity within the populations of the introduced species, (ii) this
25
26 95 phenomenon should be all the more marked as the invasion is recent (review of Sakai *et al.*
27
28 96 2001). Consequently, a lower genetic diversity within the populations of the exogenous
29
30 97 species compared to the populations of the indigenous species was expected. It is thus of
31
32 98 importance to test whether the genetic diversity of the indigenous species *O. erinacea* is
33
34 99 correlated with the presence of the introduced species *O. inornata* in zones of sympatry.
35
36 100 Indeed, *O. inornata* could induce a selective pressure on *O. erinacea* leading to decrease of
37
38 101 polymorphism in this local species.

39
40
41 102 Here, we test this hypothesis by sampling *Ocenebra erinacea* from the Atlantic and
42
43 103 Mediterranean French coasts, in the presence and absence of *Ocenebra inornata*, and by
44
45 104 measuring genetic diversity of the native species using the mitochondrial marker *cox1*. While
46
47 105 investigating the genetic effects that the presence of *O. inornata* may have on sympatric
48
49 106 populations of *O. erinacea*, we came across a very strong genetic break between Atlantic and
50
51 107 Mediterranean populations. This break is detailed and potential biogeographic causes are
52
53 108 discussed.

1
2
3 1094
5 110 **Materials and methods**6
7 1118
9 112 Sampling

10
11
12 A total of 352 adult specimens of *Ocenebra erinacea* were collected between 1999 and
13
14 2004 at 15 sites on the French coast, along line transects (<200 m in length). At each site,
15
16 specimens from different rocks were collected to reduce sampling bias in favor of a particular
17
18 lineage. The sites were located both within oyster farming zones and unexploited areas (Table
19
20 1). In order to show a possible impact of the presence of *Ocenebra inornata* on genetic
21
22 diversity of *O. erinacea*, five locations where the two species live in sympatry and 10 sites
23
24 free of *O. inornata* have been sampled. The presence of *O. inornata* was assessed by direct
25
26 observation. After collection, specimens were stored in 95% ethanol before DNA extraction.
27
28
29
30
31

32

33 122 DNA extraction, amplification and sequencing

34
35
36 Total DNA was extracted from <15 mg of foot muscle using Dneasy™ Tissue Kit
37
38 according to the manufacturer's protocol (Qiagen, Germany). Part of the mitochondrial *cox1*
39
40 gene was PCR-amplified with the HCO2198/LCO1490 primers (Folmer *et al.* 1994), which
41
42 have proved useful for neogastropod studies (e.g. Zou *et al.* 2011, 2012). Polymorphism at
43
44 *cox1* is high in *Ocenebra inornata*, a phylogenetically close species (Martel *et al.* 2004a).
45
46

47
48 PCR's were done in 50 µL, with 1X PCR buffer, 1.85 mM MgCl₂, 125 µM dNTPs,
49
50 0.25 µM of each primer, 1.6 U of Red Hot® DNA Polymerase (ABgene) and about 10 ng of
51
52 DNA template. The following cycling profile was performed using a MJResearch PTC 100
53
54 Thermal Cycler: initial 5-min denaturation step at 94°C followed by 40 cycles of 30 sec at
55
56
57
58
59
60

1
2
3 132 94°C, 30 sec at 50°C and 1 min at 72°C, and by a final 5-min extension period at 72°C. PCR
4
5 133 products were purified using MultiScreen-PCR MANU03010 plates (Millipore).
6
7

8 134 Sequencing was done by GenoScreen (Lille - France) using an ABI PRISM® 3730 XL
9
10 135 Automated DNA Sequencer (Perkin-Elmer Applied Biosystems, Foster City, CA). Sequences
11
12 136 were aligned using ClustalX (Thompson *et al.* 1994).
13
14
15 137

16
17
18 138 Data analyses.

19
20 139 Genetic analyses aimed at (i) quantifying and comparing genetic diversity among
21
22 140 populations, (ii) analyzing the spatial distribution of polymorphism and genetic exchanges
23
24 141 among populations, and (iii) studying the evolutionary relationships among populations.
25
26 142 Haplotype number H , number of polymorphic sites S , haplotype diversity H_e and average per
27
28 143 site nucleotide diversity π (Nei 1987) were calculated for each population using the software
29
30 144 DnaSP 5.10.1 (Librado & Rozas 2009).
31
32

33
34 145 We tested the null hypothesis of the standard neutral model in Arlequin v.3.5 (Excoffier
35
36 146 & Lischer 2010), by calculating the D and F_s statistics, as defined by Tajima (1989) and Fu
37
38 147 (1997). When these statistics are significantly different from zero, populations may have
39
40 148 undergone purifying selection, a selective sweep and/or expansion (<0), or balancing selection
41
42 149 and/or a population decline (>0). Statistical significance was tested by generating 10,000
43
44 150 random samples under the hypothesis of selective neutrality and population equilibrium.
45
46 151 These tests were performed for each sampling site separately, and also for pooled sites in
47
48 152 presence or absence of the invasive.
49
50

51
52 153 The differentiation index Φ_{ST} (Excoffier *et al.* 1992), an estimator of F_{ST} (Wright 1951)
53
54 154 calculated from frequency values and distances between haplotypes, was computed with
55
56 155 Arlequin v.3.5. The Kimura 2 Parameter (K2P) model of nucleotide substitution was used to
57
58
59
60

1
2
3 156 estimate genetic distances, and 10,000 permutations were used to test statistical significance
4
5 157 under the null hypothesis of no difference between populations (Excoffier *et al.* 1992).
6

7 158 Finally, a haplotype network was built using the median-joining algorithm
8
9 159 implemented in Network 4.6.1.1 (fluxus-engineering.com, Bandelt 1999). This method is one
10
11 160 of the most accurate for inferring intra-specific networks in the absence of recombination
12
13 161 (Woolley *et al.* 2008).
14
15

16 162 To help interpret the large genetic divergence observed between Atlantic and
17
18 163 Mediterranean specimens of *Ocenebra erinacea*, we looked for mitochondrial *cox1* data from
19
20 164 the BOLD database (Ratnasingham & Hebert 2007). However, besides three other BOLD
21
22 165 *cox1* sequences from Spanish specimens of *O. erinacea*, we produced the only available
23
24 166 mitochondrial sequences for the genus *Ocenebra*. We therefore used *cox1* sequences from six
25
26 167 species of the closely-related genus *Nucella* Röding, 1798 (e.g. Pascal 2004) to measure intra-
27
28 168 specific and inter-specific genetic distances. *Nucella* and *Ocenebra* are both characterized by
29
30 169 a non-planktonic larval development and lay egg capsules on hard substrates (Martel *et al.*
31
32 170 2004c; review by Krug 2011). We used the K2P model of nucleotide substitution (Kimura
33
34 171 1980), widely used in DNA barcoding (Hebert *et al.* 2003; Barrett & Hebert 2005), to
35
36 172 measure genetic distances among *cox1* haplotypes.
37
38
39
40
41
42

43 174 **Results**

44
45 175
46
47 176 A 550 bp fragment of *cox1* was sequenced for 352 individuals, and 29 haplotypes were
48
49 177 identified (GenBank accession numbers AY995771-99; Popset 63109090). Sequences include
50
51 178 37 polymorphic sites, 20 of which are parsimony informative, and one of which has three
52
53 179 character states. No indels were observed (Table 2).
54
55
56
57
58
59
60

1
2
3 181 Population-level genetic diversity and demographic stability
4

5 182 Genetic diversity is comparable among Atlantic populations of *Ocenebra erinacea*, but
6
7 183 values for the different diversity indices are low compared to other recently-studied marine
8
9
10 184 mollusks. The number of polymorphic sites between two different sequences varies between 0
11
12 185 and 6 among Atlantic populations. Two of these populations (Morbihan and St Quay) are each
13
14 186 characterized by a single haplotype, and the 12 other Atlantic sites have no more than five
15
16 187 haplotypes (sample sizes provided in Table 1). Consequently, haplotype diversity H_e is low,
17
18 188 except for Oléron ($H_e = 0.564$; Table 2). In Fouras, where *Ocenebra inornata* and *O. erinacea*
19
20 189 are sympatric, the haplotype and nucleotide diversities are respectively four- and six-fold
21
22 190 higher in the invasive drill ($H_e = 0.348$ and $\pi \times 10^{-3} = 0.83$; data from Martel 2003) than in the
23
24 191 local one ($H_e = 0.074$ and $\pi \times 10^{-3} = 0.14$).
25
26
27

28 192 A single Mediterranean population (Thau) was sampled. The haplotype diversity ($H_e =$
29
30 193 0.342) and the nucleotide diversity ($\pi \times 10^{-3} = 2.52$) are respectively two- and five-fold higher
31
32 194 than on the whole of Atlantic populations (Table 2). Moreover, 22 polymorphic sites were
33
34 195 found among 37 individuals sampled in Thau, a value considerably higher than the 24
35
36 196 polymorphic sites observed among 315 Atlantic individuals.
37
38
39

40 197 Last, haplotype and nucleotide diversities of *Ocenebra erinacea* populations co-
41
42 198 occurring with *Ocenebra inornata* were lower ($H_e = 0.247 \pm 0.0535$ and $\pi \times 10^{-3} = 0.57 \pm 0.65$)
43
44 199 than for populations located in zones where *O. inornata* was not detected ($H_e = 0.399 \pm$
45
46 200 0.3976 , $\pi \times 10^{-3} = 10.04 \pm 5.52$) (Table 2). However, this pattern is entirely due to the higher
47
48 201 diversity encountered at Thau; when removing this site from the group of populations that
49
50 202 were not found in contact with *O. inornata*, diversity values dropped significantly ($H_e = 0.179$
51
52 203 ± 0.0368 , $\pi \times 10^{-3} = 0.38 \pm 0.51$). Comparing molecular diversity at the site level revealed the
53
54 204 same pattern (Welch Two Sample t-test, including Thau, for H_e : $t = -0.83$, $df = 6.22$, $p = 0.44$;
55
56
57
58
59
60

1
2
3 205 for π : $t = -0.16$, $df = 12.81$, $p = 0.88$. In both cases, results were also non-significant when
4
5 206 removing the population of Thau).

7 207 Except for one case, the D and F_s statistics were never positive (Table 2). Furthermore,
8
9 208 the only slightly positive D value (deviation from zero non significant) was observed when
10
11 209 sites where the invasive was absent were pooled, including Thau, and this result was therefore
12
13 210 likely influenced by the underlying population structure (see “Genetic differentiation among
14
15 211 populations” Results section). There is therefore no supporting evidence that *Ocenebra*
16
17 212 *erinacea* populations exposed to *O. inornata* suffered from a population decline. Some sites
18
19 213 exhibited significant negative values of D and F_s , which can be interpreted as signs of
20
21 214 purifying selection, selective sweep and/or population expansion. Particularly, the pooled
22
23 215 Atlantic sites showed significantly negative values for both tests, regardless of whether the
24
25 216 invasive was present or not. These molecular signatures must, however, be interpreted with
26
27 217 care, as they might reflect older demographic events.
28
29
30
31
32
33
34

35 219 Genealogical relationships and spatial distribution of haplotypes

36
37
38 220 Two haplogroups, separated by 18 mutational steps, were observed using the median-
39
40 221 joining network (Fig. 1). The first haplogroup (23 haplotypes) was mainly composed of
41
42 222 Atlantic specimens, and included one specimen from Thau, characterized by haplotype H26
43
44 223 (separated from other Mediterranean haplotypes by 20 to 22 mutational steps). Haplotypes
45
46 224 from this group diverged by ≤ 2 mutations. Haplotype H1 was common (represented in 89%
47
48 225 of Atlantic individuals) and central to the Atlantic haplogroup, while the other 22 haplotypes
49
50 226 were rare (7 individuals for H3, 3 for H13, 2 for H6, H9, H15, H19 and a single individual for
51
52 227 the others) and peripheral to H1. The second haplogroup was strictly composed of
53
54
55 228 Mediterranean individuals. Of six haplotypes from this group, one was common (H21,
56
57
58
59
60

1
2
3 229 represented in 82% of Thau individuals), and four were rare (3 individuals for H22 and a
4
5 230 single individual for H23-25). Haplotypes from this group diverged by one mutation. The
6
7 231 Atlantic samples share no haplotype with the Mediterranean sample (Fig. 2). Except for H1
8
9 232 (present at all sites except Thau), H3 (shared between Loix and Aytré) and H13 (shared
10
11 233 between Loix, Aytré and Trébeurden), all haplotypes are private (observed only within one
12
13 234 population).

235

236 Genetic differentiation among populations

237 Genetic differentiation among pairs of populations was measured using Φ_{ST} . The
238 population from Thau was significantly differentiated from all other populations. Pairwise Φ_{ST}
239 values ranged between 0.94 and 0.96, corresponding to a substantial genetic differentiation
240 between the Mediterranean and Atlantic populations (Table 3). Inside the Atlantic group, no
241 significant differentiation was observed after sequential Bonferroni correction (lowest
242 corrected alpha level for Atlantic populations: 0.00055).

243

244 Levels of intra-specific divergence in *Ocenebra* compared to *Nucella*

245 Given the differences in haplotype composition and divergence between
246 Mediterranean and Atlantic sites, we investigated whether the genetic distances correspond to
247 intra- or inter-specific divergence by comparing *Ocenebra* to its close relative *Nucella*. The
248 pairwise K2P distance between *Ocenebra erinacea* haplotypes ranged between 0.18 and 4.54%
249 (maximum observed between haplotypes 20 from Loire and 25 from Thau Lagoon). Within
250 *Nucella*, K2P was calculated for 532 sequences and 117 haplotypes distributed among six
251 species, along a 434 bp stretch of *cox1*. Intra-specific distances ranged from 0 to 3.32%, while
252 inter-specific distance ranged from 4.81 to 12.2%, for specimens distributed over 1000 to

1
2
3 253 2000 km (East and West coasts of North America, respectively; BOLD database). For
4
5 254 comparison, Zou et al (2011), analyzing 108 neogastropod *cox1* sequences (same gene region
6
7 255 as analysed here; not including *Ocenebra* or *Nucella*) found maximum intra-specific K2P
8
9 256 distances of 2.2% and minimum inter-specific distances of 2.1%.

10
11
12 257

13 14 15 258 **Discussion**

16
17 259

18 19 260 Relation between *Ocenebra erinacea* and the invasive species *Ocenebra inornata*

20
21
22 261 While a decrease in genetic diversity in response to invaders was reported in the past
23
24 262 (Kim *et al.* 2003), we did not detect such a pattern among *Ocenebra erinacea* exposed to the
25
26 263 invasive species *Ocenebra inornata*. The relatively low polymorphism levels recorded may
27
28 264 have hampered our ability to detect genetic effects of the invasive on the native species, and
29
30 265 the use of additional molecular markers such as nuclear microsatellites or SNPs might further
31
32 266 help detect possible demographic events associated with the presence *O. inornata*. However,
33
34 267 this remains to be tested, as even genome-wide scans can fail at detecting recent demographic
35
36 268 events and selective pressures. Riquet *et al.* (2013), for instance, used AFLPs to compare
37
38 269 native and invasive populations of the marine mollusk *Crepidula fornicata*. They reported
39
40 270 little genetic differentiation among these populations, and detected no F_{ST} outliers out of 344
41
42 271 tested loci. An alternative hypothesis explaining the apparent absence of genetic effects of the
43
44 272 invasive on the native is that the competitive and selective pressures inflicted on *O. erinacea*
45
46 273 are too low to have genetic effects (e.g. Wittmann *et al.* 2013). Finally, deviations from
47
48 274 neutrality observed for pooled Atlantic sites suggest selection could have shaped the current
49
50 275 genetic diversity and could have blurred signatures of demographic processes.

51
52
53
54
55 276 *Ocenebra inornata* was first documented on the French Atlantic coast in 1995 (De
56
57 277 Montaudouin & Sauriau 2000, Pigeot *et al.* 2000), and the specimens of *Ocenebra erinacea*

58
59
60 12

1
2
3 278 used in this study were collected between 1999 and 2004. The introduction of *O. inornata*
4
5 279 may have been too recent at the time of sampling for genetic consequences on the native
6
7 280 species to be detectable. About ten years later, the distributional landscape of *O. inornata* on
8
9 281 Atlantic coasts have significantly changed, and the invasive is now found as far north as the
10
11 282 entrance of the Baltic Sea (Lützen *et al.* 2012). A new survey of the genetic diversity of *O.*
12
13 283 *erinacea* may today unfold the genetic consequences of the invasion by *O. inornata*, and this
14
15 284 study therefore provides a snapshot in time that may help better understand the temporal
16
17 285 dynamics of loss of genetic diversity. In addition to sampling in the field, we searched for
18
19 286 *Ocenebra* specimens in the collections of the Museum national d'Histoire naturelle in Paris
20
21 287 (France), in order to look for genetic diversity in *O. erinacea* specimens collected prior to, or
22
23 288 soon after the invasion by *O. inornata* (MNHN voucher numbers IM-2008-7101, IM-2008-
24
25 289 7102, IM-2008-7103). Unfortunately, we were not able to amplify the *cox1* marker from these
26
27 290 specimens.
28
29
30
31
32
33
34

35 292 Remarkably low genetic diversity of *Ocenebra erinacea* populations

36
37 293 Mitochondrial genetic diversity, as measured using part of *cox1*, was low relative to
38
39 294 what was observed in other marine mollusks. Overall, *Ocenebra erinacea* haplotype and
40
41 295 nucleotide diversities were (disregarding the sample from Thau, see below) $H_e = 0.18-0.25$
42
43 296 and $\pi \times 10^{-3} = 0.38-0.57$ (Table 2). Comparatively, $H_e = 0.684$ and $\pi \times 10^{-3} = 2.25$ for *Ocenebra*
44
45 297 *inornata* in its natural range (data from Martel *et al.* 2004a), $H_e = 0.734$ and $\pi \times 10^{-3} = 14.78$ in
46
47 298 the gastropod *Cyclope neritea* (Simon-Bouhet *et al.* 2006), and $H_e = 0.720$ and $\pi \times 10^{-3} = 89.84$
48
49 299 in the bivalve *Macoma balthica* (Becquet *et al.* 2012).
50
51
52
53

54 300 The low genetic diversity observed at *cox1* was consistent with the low diversity
55
56 301 observed using allozymes: Martel (2003) reported that the number of alleles N_{all} and the
57
58
59
60

1
2
3 302 observed heterozygosity H_o characterizing the Atlantic populations of *Ocenebra erinacea* are
4
5 303 respectively two to four times, and twenty to thirty times lower ($N_{all} = 1.1 \pm 0.1$; $H_o = 0.01 \pm$
6
7 304 0.01 ; mean \pm SD) than in other marine gastropods sampled in their native range, such as
8
9 305 *Bedevea hanleyi* ($N_{all} = 2.2 \pm 0.1$, $H_o = 0.30 \pm 0.02$; Hoskin 2000), *Drupella sp.* ($N_{all} = 2.3 \pm$
10
11 306 1.0 , $H_o = 0.25$; Johnson & Cumming 1995), and *Littorina striata* ($N_{all} = 4.2 \pm 1.0$, $H_o = 0.18 \pm$
12
13 307 0.17 ; De Wolf *et al.* 2000). Congruent patterns across mitochondrial and allozyme markers
14
15 308 thus suggest a low genetic diversity in these populations rather than an absence of variability
16
17 309 at *cox1*. Still, our sampling remains restricted compared to the native range of the species, and
18
19 310 additional monitoring may reveal new patterns of genetic diversity.
20
21
22
23
24
25

311

312 Genetic diversity and connectivity among populations

26
27
28
29 313 The genetic diversity of the Mediterranean population was among the highest (Table
30
31 314 2). The oyster farmers of the Thau lagoon, one of the main shell farming areas of the French
32
33 315 Mediterranean coasts, carry out commercial exchanges with distant production sites, and
34
35 316 *Ocenebra erinacea* is likely to be transferred during these exchanges. In fact, the
36
37 317 morphological survey done by Berrou *et al.* (2004) evidenced exchanges from Oléron Island
38
39 318 to Thau Lagoon (this is congruent with the observation of the Atlantic haplotype H26 being
40
41 319 observed at Thau; Figs. 1-2). In our study, the high genetic diversity observed in Thau Lagoon
42
43 320 could be the result of the introduction of Mediterranean specimens imported from other
44
45 321 production sites such as Oléron. As no Mediterranean site was sampled other than Thau
46
47 322 Lagoon, the artificial mixing induced by shellfish exchanges cannot be further evaluated here.
48
49
50

51 323 Alternatively, the difference in genetic diversity observed between the Atlantic and the
52
53 324 Mediterranean population of Thau lagoon could be explained by historical and
54
55 325 biogeographical factors, and/or selection. *Ocenebra erinacea* is not well adapted to cold water
56
57
58
59
60

1
2
3 326 and Belgium currently constitutes the northern limit of its natural range (Graham 1988).
4
5 327 Consequently, the species may have found, as other marine species (e.g. Nikula & Väinölä
6
7 328 2003, Ladhar-Chaabouni *et al.* 2010), a refugium on the Iberian coast or in the Mediterranean
8
9 329 basin during past glaciations. *O. erinacea* may have disappeared from the French Atlantic
10
11 330 coasts during the Würm Glacial period (115,000 to 10,000 years BP) but survived on the
12
13 331 coasts of the Iberian peninsula, which is known as one of the major Pleistocene refugia
14
15 332 (Gómez & Lunz 2007). At the end of this climatic crisis, a reduced number of individuals
16
17 333 from southern refuges may have reached northern coasts. Maggs *et al.* (2008), reviewing
18
19 334 molecular signatures of glacial refugia on marine species, made predictions of low genetic and
20
21 335 haplotype diversity in northern regions previously covered by ice sheets, and comparatively
22
23 336 high diversity in refugial southern regions (and see Hewitt 1996). These predictions are
24
25 337 generally met for *O. erinacea*, but additional sampling from the Iberian peninsula and the
26
27 338 Mediterranean Sea would be necessary to further characterize the historical biogeography of
28
29 339 this species. Given *O. erinacea*'s maladaptation to cold-water, another possibility is that
30
31 340 selection (either purifying selection, or selective sweeps) linked to differences in water
32
33 341 temperature between Thau and the Atlantic sites produced the observed patterns of genetic
34
35 342 diversity. The negative Tajima's *D* and Fu's *F_s* observed for the Atlantic population (in
36
37 343 absence and presence of the invasive) would support this scenario.
38
39
40
41
42

43 344 One potential consequence of biogeographic divergence between Atlantic and
44
45 345 Mediterranean populations is the emergence of new species (Hewitt 1996, 2004). Recently,
46
47 346 Salicini *et al.* (2013) have shown that in the bat *Myotis nattereri*, a complex of four cryptic
48
49 347 species exist in the Western Palearctic region (central and southern Europe, northwestern
50
51 348 Maghreb), each species coinciding with a glacial refugium. In *Ocenebra erinacea*, inter-clade
52
53 349 divergence overlaps with the inter-specific distances observed in the closely-related genus
54
55 350 *Nucella* (even though the geographical distances separating *Nucella* specimens were greater
56
57
58
59
60

1
2
3 351 than the distances separating *O. erinacea* specimens; see Bergsten *et al.* 2012). In addition, *O.*
4
5 352 *erinacea* specimens from the Atlantic and Mediterranean can readily be distinguished using
6
7 353 morphology, and the morphological distance between Atlantic and Mediterranean *O. erinacea*
8
9 354 is comparable to what is observed between *O. erinacea* and *Ocenebra brevirobusta* Houart
10
11 355 2000 (Berrou *et al.* 2004). It is therefore possible that the Atlantic and Mediterranean clades
12
13 356 sampled for this study belong to groups in incipient stages of speciation, or even undescribed
14
15 357 species.
16
17
18
19 358

20 21 359 **Acknowledgements**

22
23
24 360 We thank Stéphane Robert (IFREMER, La Tremblade, France), Yvonne Pascal, Michel
25
26 361 Pascal (INRA Rennes, France), François Siorat (LPO), Armel Deniau (LPO), Marie-Gabrielle
27
28 362 Vitre, Paul Wendling, Françoise Dreau, Christian Bussière, Isabelle Kuhne, Jean-Paul
29
30 363 Egreteau, José Simone Guézou, Sandrine Sourisseau, Xavier de Montaudouin (University of
31
32 364 Bordeaux, France), Pierre-Guy Sauriau (IFREMER, L'Houmeau, France) for their help with
33
34 365 field sampling, Jacques Pigeot for his insights and help with identifications, Stéphane Robert
35
36 366 (IFREMER, La Tremblade, France), Philippe Gouletquer (IFREMER, La Tremblade, France)
37
38 367 and Yves Pichot (IFREMER, Sète, France) for information on shellfish transfers in France,
39
40 368 Pierre Lozouet at the Muséum national d'Histoire naturelle (Paris, France) for granting access
41
42 369 to the *Ocenebra* collection, and Alice Saunier for her help in the lab. This work was funded
43
44 370 by the Conseil Général de Charente-Maritime and the Ministère de l'Ecologie et du
45
46 371 Développement Durable (Program INVABIO no. D4E/SRP/01115). Salaries for EP & AV
47
48 372 were covered by a grant to the Poitou-Charentes region (Contrat de Projet État-Région 2007-
49
50 373 2013), by a grant from the Fond Européen de Développement Régional (EP), and by Actions
51
52 374 Internationales et Rayonnement of the University of La Rochelle (AV). We thank the three
53
54
55
56
57
58
59
60

1
2
3 375 anonymous reviewers and the editor, whose comments significantly improved the manuscript.

4
5 376 This work is dedicated to the memory of Michel Pascal.

6
7 377

8
9
10 378 **References**

11
12 379 Amano, K., G.J. Vermeij (1998) Taxonomy and evolution of the genus *Ocenebrellus*

13
14 380 (Gastropoda: Muricidae) in Japan. *Paleontological Research*, **2**, 199-212.

15
16
17 381 Bandelt, H., P. Forster, et al. (1999) Median-joining networks for inferring intraspecific

18
19 382 phylogenies. *Molecular Biology and Evolution*, **16**, 37-48.

20
21 383 Barrett, R., P.D.N. Hebert (2005) Identifying spiders through DNA barcodes. *Canadian*

22
23 384 *Journal of Zoology*, **83**, 481–491.

24
25
26 385 Becquet, V., B. Simon-Bouhet, et al. (2012) Glacial refugium versus range limit: conservation

27
28 386 genetics of *Macoma balthica*, a key species in the Bay of Biscay (France). *Journal of*

29
30 387 *Experimental Marine Biology and Ecology*, **432-433**, 73-82.

31
32 388 Bergsten, J., D.T. Bilton, T. Fujisawa, et al. (2012) The effect of geographical scale of

33
34 389 sampling on DNA barcoding. *Systematic Biology*, **61**, 851–869.

35
36
37 390 Berrou, V., D. Merle, et al. (2004) Comparative morphology of Pliocene, Quaternary and

38
39 391 Recent shells of *Ocenebra erinaceus* (Linnaeus, 1758) and *O. brevirobusta* Houart,

40
41 392 2000 (Mollusca, Muricidae, Ocenebrinae): reflections on the intra- and interspecific

42
43 393 variations. *Geodiversitas*, **26**(2), 263-295.

44
45
46 394 Bouchet, P., R. Houart (2014). *Ocenebra inornata* (Récluz, 1851). Accessed through: World

47
48 395 Register of Marine Species at

49
50 396 <http://www.marinespecies.org/aphia.php?p=taxdetails&id=403745> on 2014-05-02.

51
52 397 Carlton, J.T. (1989) Man's role in changing the face of the ocean: biological invasions and

53
54 398 implications for conservation of near shore environments. *Conservation Biology* **3**: 265-

55
56
57 399 273.

- 1
2
3 400 Carlton, J.T. (1992) Introduced marine and estuarine mollusks of North America: an end-of-
4
5 401 the-20th-century perspective. *Journal of Shellfish Research*, **11**, 489-505.
6
7 402 Choe, B.L., J.K. Park (1997) Description of Muricid species (Gastropoda: Neogastropoda)
8
9 403 collected from the coastal areas of south Korea. *Journal of Biological Science*, **1**, 281-
10
11 404 296.
12
13 405 De Montaudouin, X., P.-G. Sauriau (2000) Contribution to a synopsis of marine species
14
15 406 richness in the Pertuis Charentais Sea with new insights in soft-bottom macrofauna of
16
17 407 the Marennes-Oléron Bay. *Cahiers de Biologie Marine*, **41**, 188-222.
18
19 408 De Wolf, H., R. Verhagen, et al. (2000) Large scale population structure and gene flow in the
20
21 409 planktonic developing periwinkle *Littorina striata* (Mollusca: Gastropoda), in
22
23 410 Macronésia. *Journal of Experimental Marine Biology and Ecology*, **246**, 69-83.
24
25 411 Elton, C. (1958). *The ecology of invasions by animals and plants*. University of Chicago
26
27 412 Press.
28
29 413 Excoffier, L., H.E.L. Lischer (2010) Arlequin suite ver 3.5: A new series of programs to
30
31 414 perform population genetics analyses under Linux and Windows. *Molecular Ecology*
32
33 415 *Resources*, **10**, 564-567.
34
35 416 Excoffier, L., P.E. Smouse, et al. (1992) Analysis of Molecular Variance Inferred From
36
37 417 Metric Distances Among DNA Haplotypes: Application to Human Mitochondrial DNA
38
39 418 Restriction Data. *Genetics*, **131**, 479-491.
40
41 419 Folmer, O., M. Black, et al. (1994) DNA primers for amplification of mitochondrial
42
43 420 cytochrome c oxidase subunit I from diverse metazoan invertebrates. *Molecular Marine*
44
45 421 *Biology and Biotechnology*, **3**, 294-299.
46
47 422 Frankham, R. (1995) Conservation genetics. *Annual Review of Genetics*, **29**, 305-327.
48
49 423 Fu, Y-X. (1997) Statistical tests of neutrality of mutations against population growth,
50
51 424 hitchhiking and background selection. *Genetics*, **147**, 915-925.
52
53
54
55
56
57
58
59
60

- 1
2
3 425 Garton, D.W., W.R. Haag (1991) Heterozygosity, shell length and metabolism in the
4
5 426 European mussel, *Dreissena polymorpha*, from a recently established population in lake
6
7 427 Erie. *Comparative Biochemistry and Physiology*, **99**, 45-48.
8
9
10 428 Gouletquer, P., G. Bachelet, et al. (2002) Open Atlantic coast of Europe - a century of
11
12 429 introduced species into French waters. In: E. Leppäkoski, S. Gollash & S. Olenin (Eds).
13
14 430 *Invasive species of Europe - Distribution, impact and management*. Kluwer Academic
15
16 431 Publishers, Dordrecht / Boston / London.
17
18
19 432 Gómez, A., D.H. Lunt (2007) Refugia within Refugia: Patterns of Phylogeographic
20
21 433 Concordance in the Iberian Peninsula. In: S. Weiss, N. Ferrand (Eds). *Phylogeography of*
22
23 434 *Southern European Refugia*. Netherlands: Springer, volume III, pp. 155-188.
24
25
26 435 Graham, A. (1998). *Molluscs: Prosobranchs and Pyramidellid Gastropods: Keys and Notes*
27
28 436 *for the Identification of the Species*. Linnean Society of London.
29
30
31 437 Hebert, P.D.N., A. Cywinska, et al. (2003) Biological identifications through DNA barcodes.
32
33 438 *Proceedings of the Royal Society of London Series B-Biological Sciences*, **270**, 313–321.
34
35
36 439 Hedgecock, D., L. Jing-Zhong, S. DeCola, C.D. Haudenschild, E. Meyer, D.T. Manahan, B.
37
38 440 Bowen (2007) Transcriptomic analysis of growth heterosis in larval Pacific oysters
39
40 441 (*Crassostrea gigas*). *Proceedings of the National Academy of Sciences of the United States*
41
42 442 *of America*, **104**, 2313-2318.
43
44
45 443 Hewitt, G.W. (1996) Some genetic consequences of ice ages, and their role in divergence and
46
47 444 speciation. *Biological Journal of the Linnean Society*, **58**, 247-276.
48
49
50 445 Hewitt, G.M. (2004) Genetic consequences of climatic oscillations in the quaternary.
51
52 446 *Philosophical transactions of the Royal Society of London. Series B, Biological Sciences*,
53
54 447 **359**, 183–195.
55
56
57
58
59
60

- 1
2
3 448 Hoskin, M.G. (2000) Effects of the east Australian current on the genetic structure of a direct
4
5 449 developing muricid snail (*Bedevea hanleyi*, Angas): variability within and among local
6
7 450 populations. *Biological Journal of the Linnean Society*, **69**, 245-262.
8
9
10 451 Houart, R., B.I. Sirenko (2003) Review of the Recent species of *Ocenebra* Gray, 1847
11
12 452 and *Ocinebrellus* Jousseau, 1880 in the Northwestern Pacific. *Ruthenica*, **13**, 53-74.
13
14 453 Johnson, M.S., R.L. Cumming (1995) Genetic distinctness of three widespread and
15
16 454 morphologically variable species of *Drupella* (Gastropoda: Muricidae). *Coral Reefs*, **14**,
17
18 455 71-78.
19
20 456 Kim, M.S., S.D. Brunsfeld, et al. (2003) Effect of white pine blister rust (*Cronartium ribicola*)
21
22 457 and rust-resistance breeding on genetic variation in western white pine (*Pinus*
23
24 458 *monticola*). *Theoretical and Applied Genetics*, **106**, 1004-1010.
25
26
27
28 459 Kimura, M. (1980) A simple method for estimating evolutionary rates of base substitutions
29
30 460 through comparative studies of nucleotide-sequences. *Journal of Molecular Evolution*, **16**,
31
32 461 111–120.
33
34
35 462 Krug, P. (2011) Patterns of speciation in marine gastropods: a review of the phylogenetic
36
37 463 evidence for localized radiations in the sea. *American Malacological Bulletin*, **29**, 169–186.
38
39 464 Ladhar-Chaabouni, R., A. Hamza-Chaffai, et al. (2010) A pilot study of genetic differentiation
40
41 465 between two phenotypes of a Mediterranean population of the bivalve *Cerastoderma*
42
43 466 *glaucum* and genetic discrimination with other *Cerastoderma glaucum* and
44
45 467 *Cerastoderma edule* populations outside the Mediterranean. *Marine Ecology*, **31**, 355-
46
47 468 363.
48
49
50 469 Lande, R. (1995) Mutation and conservation. *Conservation Biology*, **9**, 782-791.
51
52 470 Launey, S., D. Hedgecock (2001) High genetic load in the Pacific oyster *Crassostrea gigas*.
53
54 471 *Genetics*, **159**, 255-265
55
56
57
58
59
60

- 1
2
3 472 Librado, P., J. Rozas (2009) DnaSP v5: A software for comprehensive analysis of DNA
4
5 473 polymorphism data. *Bioinformatics*, **25**, 1451-1452.
6
7 474 Lockwood, J.L., M.F. Hoopes, M.P. Marchetti (2007) *Invasion Ecology*. Blackwell Publishing,
8
9 475 Oxford, UK. 304 pp.
10
11 476 Lützen, J., M. Faasse, et al. (2012) The Japanese oyster drill *Ocenebrellus inornatus* (Récluz,
12
13 477 1851) (Mollusca, Gastropoda, Muricidae), introduced to the Limfjord, Denmark.
14
15 478 *Aquatic Invasions*, **7**(2), 181-191.
16
17 479 Mack, R.N., D. Simberloff, et al. (2000) Biotic invasions: causes, epidemiology, global
18
19 480 consequences and control. *Ecological Application*, **10**, 690-710.
20
21 481 Maggs, C.A., R. Castilho, et al. (2008) Evaluating signatures of glacial refugia for North
22
23 482 Atlantic benthic marine taxa. *Ecology*, **89**, S108-S122.
24
25 483 Martel C. (2003) *Invasions biologiques et perturbations anthropiques des écosystèmes*
26
27 484 *littoraux : source, profil d'expansion et impacts d'un gastéropode marin*, *Ocenebrellus*
28
29 485 *inornatus*, *introduit accidentellement sur les côtes atlantiques françaises*. Doctoral thesis,
30
31 486 Université de La Rochelle. 122 pp & Annexes.
32
33 487 Martel, C., D. Bourguet, et al. (2004b) Invasion by the marine gastropod *Ocenebrellus*
34
35 488 *inornatus* in France. II. Expansion along the Atlantic coast. *Marine Ecology Progress*
36
37 489 *Series*, **273**, 163-172.
38
39 490 Martel, C., J.M. Guarini, et al. (2004c) Invasion by the marine gastropod *Ocenebrellus*
40
41 491 *inornatus* in France. III. Comparison of biological traits with the resident species
42
43 492 *Ocenebra erinacea*. *Marine Biology*, **146**, 93-102.
44
45 493 Martel, C., F. Viard, et al. (2004a) Invasion by the marine gastropod *Ocenebrellus inornatus*
46
47 494 in France. I. Scenario for the source of introduction. *Journal of Experimental Marine*
48
49 495 *Biology and Ecology*, **305**, 155-170.
50
51
52
53
54
55
56
57
58
59
60

- 1
2
3 496 Mitton, J.B., M.C. Grant (1984) Associations among protein heterozygosity, growth rate and
4
5 497 developmental homeostasis. *Annual review of Ecology and Systematics*, **15**, 479-499.
6
7 498 Mooney, H.A., E.E. Cleland (2001) The evolutionary impact of invasive species. *Proceedings*
8
9 499 *of the National Academy of Sciences of the United States of America*, **98**, 5446-5451.
10
11 500 Nei M. (1987) *Molecular Evolutionary Genetics*. Columbia University Press, New York.
12
13 501 Nikula, R., R. Väinölä (2003) Phylogeography of *Cerastoderma glaucum* (Bivalvia:
14
15 502 Cardiidae) across Europe: a major break in the Eastern Mediterranean. *Marine Biology*,
16
17 503 **143**, 339-350.
18
19 504 Pante, E., B. Simon-Bouhet (2013) marmap: A Package for Importing, Plotting and Analyzing
20
21 505 Bathymetric and Topographic Data in R. *PLoS One*, **8**(9), e73051.
22
23 506 Parmesan C., G. Yohe (2003) A globally coherent fingerprint of climate change impacts
24
25 507 across natural systems. *Nature*, **421**, 37-42.
26
27 508 Pascal P.-Y. (2004) *Rôle des espèces autochtones dans les processus d'invasions biologiques*
28
29 509 *marines: l'exemple du perceur invasif Ocinebrellus inornatus et du perceur autochtone*
30
31 510 *Ocenebra erinacea sur les côtes françaises*. Masters Thesis, Université de La Rochelle,
32
33 511 47pp.
34
35 512 Pigeot, J., P. Miramand, et al. (2000) Présence d'un nouveau prédateur de l'huître creuse,
36
37 513 *Ocinebrellus inornatus* (Recluz, 1851), dans le bassin conchylicole de Marennes-
38
39 514 Oléron. *Comptes-rendus de l'Académie des Sciences de Paris*, **323**, 697-703.
40
41 515 Ratnasingham, S., P.D.N. Hebert (2007) BOLD : The Barcode of Life Data System BOLD:
42
43 516 The Barcode of Life Data System (<http://www.barcodinglife.org>). *Molecular Ecology*
44
45 517 *Notes*, **7**, 355-364.
46
47 518 Riquet, F., C. Daguin-Thiébaud, et al. (2013) Contrasting patterns of genome-wide
48
49 519 polymorphism in the native and invasive range of the marine mollusc *Crepidula*
50
51 520 *fornicata*. *Molecular Ecology*, **7**, 355-364.
52
53
54
55
56
57
58
59
60

1
2
3
4
5
6
7
8
9
10
11
12
13
14
15
16
17
18
19
20
21
22
23
24
25
26
27
28
29
30
31
32
33
34
35
36
37
38
39
40
41
42
43
44
45
46
47
48
49
50
51
52
53
54
55
56
57
58
59
60

- 521 Ruiz, G.M., T.K. Rawlings, et al. (2000) Global spread of microorganisms by ships: ballast
522 water discharged from vessels harbours a cocktail of potential pathogens. *Nature*, **408**,
523 49-50.
- 524 Sakai, A.K., F.W. Allendorf, et al. (2001) The population biology of invasive species. *Annual*
525 *Review of Ecology and Systematics*, **32**, 305-332.
- 526 Salicini I., C. Ibañez , et al. (2013) Deep differentiation between and within Mediterranean
527 glacial refugia in a flying mammal, the *Myotis nattereri* bat complex. *Journal of*
528 *Biogeography*, **40**, 1182–1193.
- 529 Seebens H., M.T. Gastner, et al. (2013) The risk of marine bioinvasion caused by global
530 shipping. *Ecology Letters*, **6**, 782-790.
- 531 Simon-Bouhet, B., P. Garcia-Meunier, et al. (2006) Multiple introductions promote range
532 expansion of the mollusc *Cyclope neritea* (Nassariidae) in France: evidence from
533 mitochondrial sequence data. *Molecular Ecology*, **15**, 1699-1711.
- 534 Strauss, S.Y., J.A. Lau, et al. (2006) Evolutionary responses of natives to introduced species:
535 what do introductions tell us about natural communities? *Ecology Letters*, **9**, 357-374.
- 536 Tajima, F. (1989) Statistical method for testing the neutral mutation hypothesis by DNA
537 polymorphism. *Genetics*, **123**(3), 585-595.
- 538 Thompson, J.D., T.J. Gibson, et al. (1997) The ClustalX windows interface: flexible strategies
539 for multiple sequence alignment aided by quality analysis tools. *Nucleic Acid Research*,
540 **24**, 4876-4882.
- 541 Wittmann, M.J., M. Hutzenthaler, et al. (2013) Ecological and genetic effects of introduced
542 species on their native competitors. *Theoretical Population Biology*, **84**, 25-35.
- 543 Woolley, S.M., D. Posada, et al. (2008) A comparison of phylogenetic network methods using
544 computer simulation. *PloS One*, **3**, e1913.

1
2
3 545 Wright, S. (1951) The genetical structure of populations. *Annals of Human Genetics*, **15**, 323-
4
5 546 354.

6
7 547 Zou, S., Q. Li, L. Kong, H. Yu, X. Zheng (2011) Comparing the Usefulness of Distance,
8
9 548 Monophyly and Character-Based DNA Barcoding Methods in Species Identification: A
10
11 549 Case Study of Neogastropoda. *PLoS One*, **6**, e26619.

12
13 550 Zou, S., Q. Li, L. Kong (2012) Multigene barcoding and phylogeny of geographically
14
15 551 widespread muricids (Gastropoda: Neogastropoda) along the coast of china. *Marine*
16
17 552 *Biotechnology*, **14**, 21–34.

18
19
20 553 Zouros, E. (1993) Associative overdominance evaluating the effects of inbreeding and linkage
21
22 554 disequilibrium. *Genetica*, **89**, 35-46.

23
24
25 555
26
27
28
29
30
31
32
33
34
35
36
37
38
39
40
41
42
43
44
45
46
47
48
49
50
51
52
53
54
55
56
57
58
59
60

556 Table 1. *Ocenebra erinacea* collection sites (listed from North to South, following the
 557 coastline), site name abbreviations (Ab., as used in Figure 2), number of *O. erinacea*
 558 specimens collected and sequenced (n), geographical coordinates, year of collection, and
 559 characteristics of the locations: presence (+) or absence (-) of oyster farms and of *O. inornata*.
 560

Location	Ab.	n	Latitude	Longitude	Year of collection	Shellfish area	Presence of <i>O. inornata</i>
Blainville	Bl	31	49°03' N	1°36' W	2003	+	-
Chaussey	Ch	25	48°52' N	1°48' W	2003	+	-
Saint Malo	SM	22	48°39' N	2°01' W	2004	-	-
Saint Quay	SQ	23	48°39' N	2°50' W	2004	-	-
Trébeurden	Tr	24	48°48' N	3°35' W	2004	-	-
Crozon	Cr	23	48°17' N	4°27' W	2004	-	-
Le Croisic	LC	22	47°18' N	2°31' W	2004	-	-
Morbihan	Mo	12	47°33' N	2°51' W	2004	-	-
Bourgneuf	Bo	24	47°01' N	2°01' W	2003	+	+
Loix	Lo	28	46°13' N	1°24' W	2003	+	+
Aytré	Ay	20	46°06' N	1°07' W	2003	+	+
Fouras	Fo	27	46°00' N	1°07' W	2004	+	+
Oléron	OI	13	45°53' N	1°10' W	2004	+	+
Arcachon	Ar	21	44°40' N	1°12' W	1999	+	-
Thau	Th	37	43°24' N	3°35' W	1999	+	-

561

562

563 Table 2. Molecular diversity of populations and results of the neutrality tests. The number of
 564 segregating sites (S), the number of haplotypes (H), the haplotype diversity ($H_e \pm$ one standard
 565 deviation), and the nucleotide diversity ($\pi \pm$ one standard deviation) are given for each
 566 sampling site, site groups in presence and in absence of the invasive (with and without the
 567 Mediterranean population of Thau), and for the entire data set. Sites where *Ocenebra inornata*
 568 was present are indicated by an asterisk. For neutrality tests of Tajima and Fu, statistical
 569 significance after sequential Bonferroni correction is indicated with an asterisk.

570

571

Sampling sites	S	H	$H_e \pm SD$	$\pi \pm SD (x10^{-3})$	Tajima's D	Fu's F_s
Blainville	1	2	0.065 ± 0.059	0.12 ± 0.28	-1.14	-1.24*
Chaussey	3	4	0.230 ± 0.110	0.44 ± 0.58	-1.73	-3.08*
Saint Malo	1	2	0.091 ± 0.081	0.17 ± 0.34	-1.16	-0.96
Saint Quay	0	1	0	0	0	0
Trébeurden	5	5	0.377 ± 0.122	0.90 ± 0.89	-1.83	-2.80*
Crozon	2	3	0.316 ± 0.118	0.60 ± 0.70	-0.86	-0.87
Le Croisic	4	4	0.333 ± 0.124	0.81 ± 0.84	-1.67	-1.74
Morbihan	0	1	0	0	0	0
Bourgneuf *	2	2	0.083 ± 0.075	0.30 ± 0.47	-1.51	-0.19
Loix *	5	5	0.270 ± 0.109	0.65 ± 0.72	-2.01*	-3.57*
Aytré *	4	4	0.363 ± 0.131	0.89 ± 0.89	-1.64	-1.61
Fouras *	1	2	0.074 ± 0.067	0.14 ± 0.30	-1.15	-1.12
Oléron *	2	3	0.564 ± 0.112	1.12 ± 1.06	-0.13	-0.17
Arcachon	1	2	0.095 ± 0.084	0.17 ± 0.35	-1.16	-0.92
Thau	22	6	0.342 ± 0.098	2.52 ± 1.76	-2.50*	-0.42
Sites in presence of invasive	11	9	0.247 ± 0.0535	0.57 ± 0.65	-2.10*	-9.42*
Sites in absence of invasive	31	22	0.399 ± 0.3976	10.04 ± 5.52	0.22	-0.06
Sites in absence of invasive (without Thau)	16	16	0.179 ± 0.0368	0.38 ± 0.51	-2.38*	< -10*
All populations	37	29	0.356 ± 0.0325	7.63 ± 4.20	-0.81	-4.97

572

573

1
2
3
4
5
6
7
8
9
10
11
12
13
14
15
16
17
18
19
20
21
22
23
24
25
26
27
28
29
30
31
32
33
34
35
36
37
38
39
40
41
42
43
44
45
46
47
48
49

574 Table 3. Pairwise Φ_{ST} values calculated using the Kimura 2 Parameter model of nucleotide substitution. Only pairwise comparisons involving the
575 population of Thau are statistically significant after sequential Bonferroni correction.

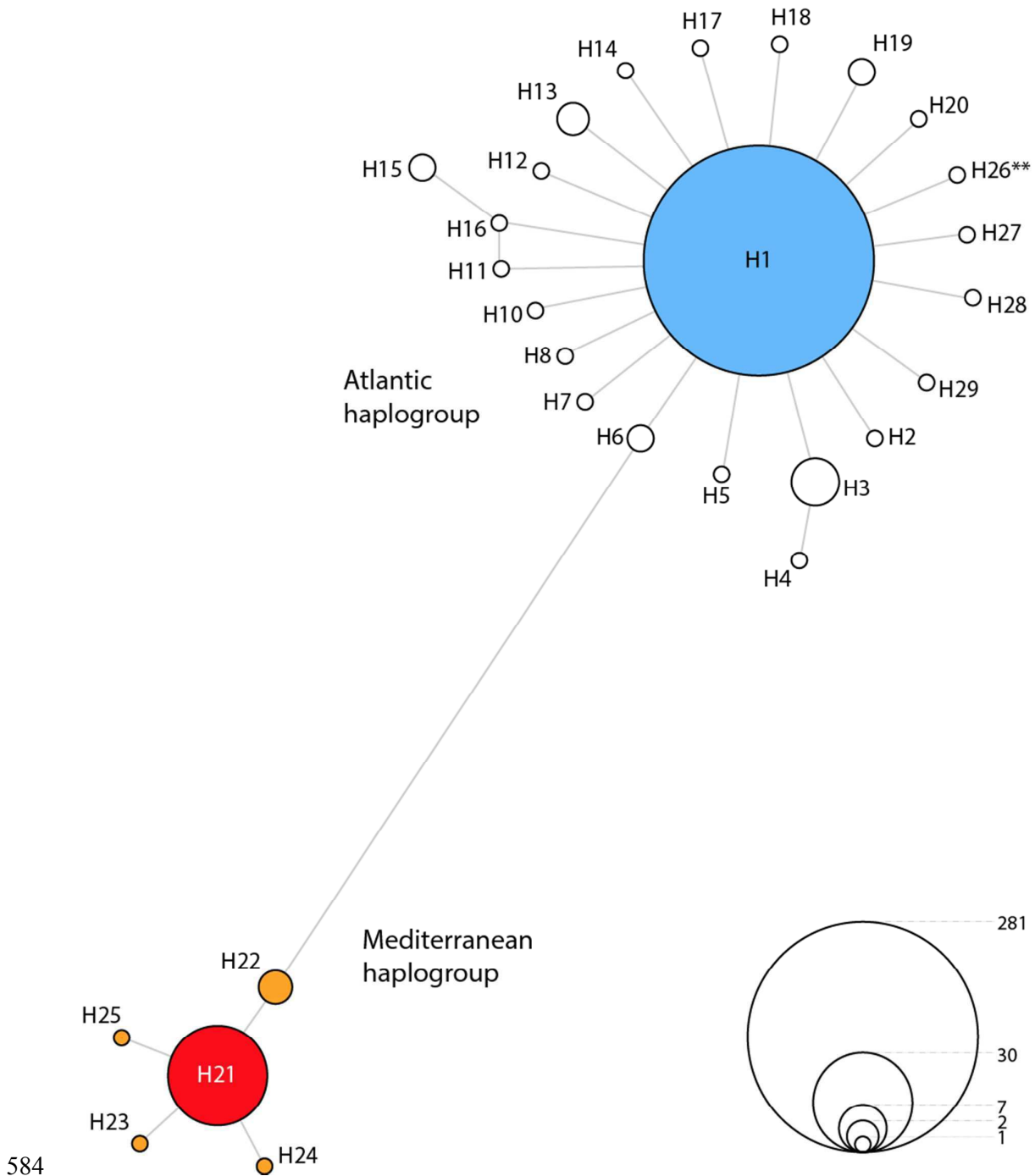
576

	1	2	3	4	5	6	7	8	9	10	11	12	13	14	15
1. Blainville	0														
2. Chausey	0.0048	0													
3. Saint Malo	0.00242	0.00244	0												
4. Saint Quay	0.01001	0.00356	0.00207	0											
5. Trebeurden	0.02194	0.01045	0.00921	0.01207	0										
6. Crozon	0.05037	0.02772	0.03452	0.04529	0.02682	0									
7. Le Croisic	0.03001	0.01442	0.01577	0.02118	0.01654	0.01135	0								
8. Morbihan	0.03708	0.03371	0.03067	0	0.02156	0.00476	0.01543	0							
9. Bourgneuf	0.00458	0.00021	0.00102	0.00181	0.01083	0.0316	0.01598	0.03274	0						
10. Loix	0.00242	-0.0008	0.00559	0.00747	0.00258	0.02217	0.012	-0.0358	0.01337	0					
11. Aytré	0.03811	0.01838	0.02156	0.0293	0.00956	0.03281	0.02045	0.01049	0.00555	0.01096	0				
12. Oleron	0.28743	0.18725	0.23275	0.28709	0.1342	0.16138	0.13706	0.18898	0.15611	0.12163	0.04004	0			
13. Fouras	0.0004	0.00162	0.00096	0.00611	0.01656	0.04351	0.02394	0.03502	0.00196	0.00096	0.03104	0.26425	0		
14. Arcachon	0.0032	0.00323	0.00014	0.00443	0.00763	0.03266	0.01404	0.02941	0.00153	0.00658	0.01955	0.22606	0.00145	0	
15. Thau	0.96208	0.95559	0.95617	0.95856	0.94988	0.95236	0.95001	0.94928	0.95614	0.9547	0.9484	0.94167	0.95959	0.95541	0

577

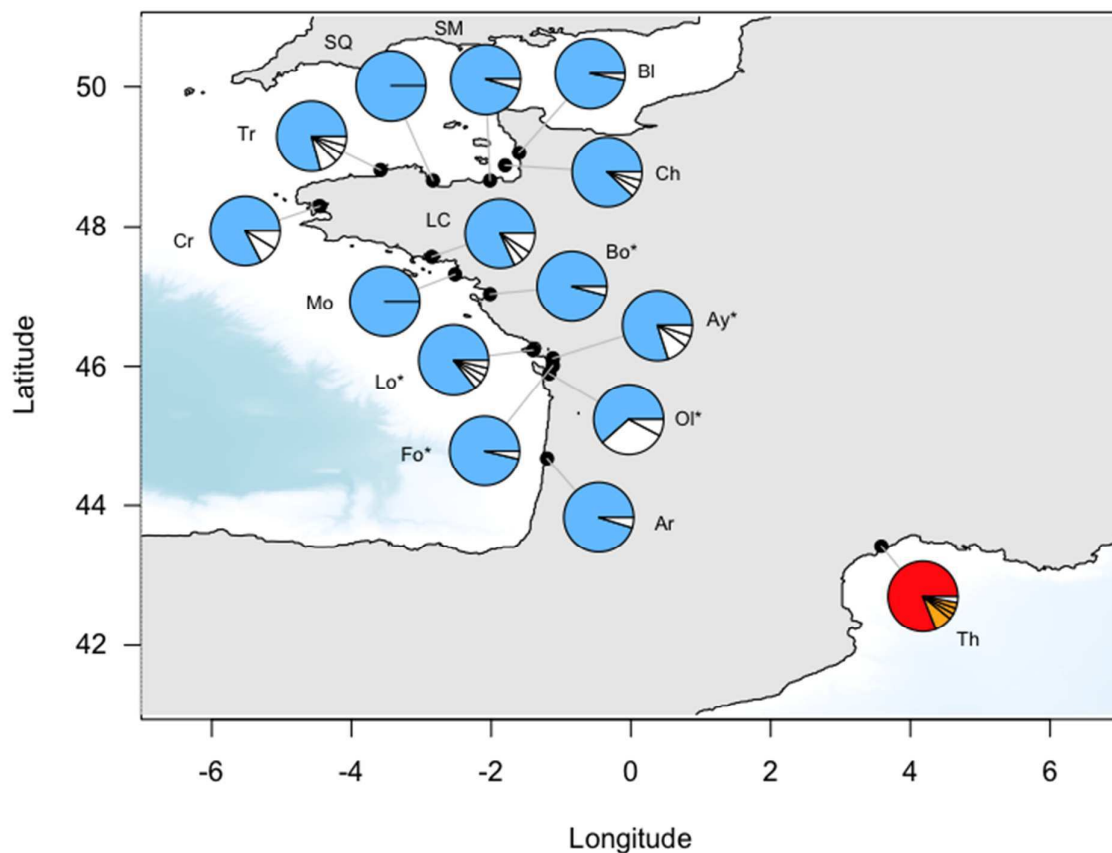
578

579 Fig. 1. Median-joining haplotype network. Each circle represents a haplotype, which
 580 frequency is proportional to circle diameter (legend: bottom right). Distances between
 581 haplotypes are proportional to the number of mutation events (see text). The Atlantic
 582 haplogroup contains one Mediterranean population, represented by haplotype H26 (marked
 583 with **).



584

585 Fig. 2. Distribution of haplotype frequencies along the French coast. Abbreviations for site
586 names are detailed in Table 1. Haplotype colors correspond to the colors used in Figure 1. The
587 stations where both *Ocenebra erinacea* and *Ocenebra inornata* were observed are marked
588 with an asterisk. Map constructed with R package marmap (Pante & Simon-Bouhet 2013).



589

590

1
2
3
4
5
6
7 1 Evaluating the genetic effects of the invasive *Ocenebrelluscenebra inornatus* on the
8
9 2 native oyster drill *Ocenebra erinacea*
10
11 3

12
13 4 Eric Pante¹, Pierre-Yves Pascal², Vanessa Becquet¹, Amélia Viricel¹, Benoit Simon-Bouhet¹,
14
15 and Pascale Garcia¹
16
17

18 6
19
20 7 ¹ Littoral, Environnement et Sociétés (LIENSs) UMR 7266 CNRS – Université de La
21
22 8 Rochelle, 2 rue Olympe de Gouges, 17000 La Rochelle, France.

23
24 9 ² Systématique-Adaptation-Evolution, Equipe Biologie de la Mangrove, Laboratoire de
25
26 10 Biologie Marine, UMR 7138 CNRS-MNHN-UPMS, Université des Antilles et de la Guyane,
27
28 11 BP 592 F-97159 Pointe-à-Pitre cedex, Guadeloupe, France
29
30
31

32
33 13 Keyword: *Ocenebra erinaceus*; *Ocenebrellus inornatus*; haplotype diversity; evolutionary
34
35 14 response; evolutionary ecology; invasive species; glacial refugium; cryptic species
36
37
38
39
40
41
42
43
44
45
46
47
48
49
50
51
52
53
54
55
56
57
58
59
60

16 **Abstract**

17
18 Studies focusing on the effect of invasive species on the genetic diversity of native marine
19 invertebrates remain scant. Here we report diversity among French populations of the
20 intertidal gastropod *Ocenebra erinacea* (Linnaeus, 1758) sampled in the presence and absence
21 of the invasive ~~*Ocenebrellus inornatus*~~*Ocenebra inornata* (Recluz, 1851). Between 1999 and
22 2004 a total of 352 individuals of *O. erinacea* were collected from 15 sites, five of which in
23 the presence of the invasive, and genotyped at the mitochondrial locus *cox1*. No statistical
24 difference was observed between polymorphism levels recorded within native populations
25 exposed to the invasive, compared to populations sampled in the absence of ~~*O. inornatus*~~*O.*
26 *inornata*. No sign of native population ~~bottleneck-decline~~ was detected in response to the
27 invader. While significant shifts in native *O. erinacea* population sizes were previously
28 reported in the literature, genetic effects may take longer to accumulate, ~~or may be~~
29 ~~undetectable without a larger panel of genetic markers~~~~or may be detectable using a larger~~
30 ~~panel of genetic markers~~. In contrast, large genetic distances and significant population
31 differentiation were recorded between Atlantic and Mediterranean *O. erinacea* samples,
32 suggesting that these populations have distinct evolutionary histories. Comparison of genetic
33 divergence within the closely-related genus *Nucella* suggests that the Atlantic populations and
34 the Mediterranean *O. erinacea* populations from Thau Lagoon may belong to different species
35 or subspecies.

1
2
3
4
5
6
7 37 **Introduction**
8
9
10 38

11 39 Natural movements of species ranges on the surface of the world (expansions,
12 40 regressions, displacements) play a considerable role in the evolution of species. Most of the
13 41 time, these phenomena are progressive and marked by the tempo of geological processes (e.g.
14 42 Hewitt 1996). However, ~~for a~~ during the last few decades a growing number of species has
15 43 undergone changes in their natural range due to both ~~global~~ changes at ~~the planetary~~ global scale
16 44 (e.g. Parmesan & Yohe 2003) and artificial transfers due to human activities (e.g. Carlton
17 45 1989; Seebens *et al.* 2013).

18 46 The number of biological invasions has strongly increased during the last decades (e.g.
19 47 Mack *et al.* 2000; Mooney & Cleland, 2001; Ruiz *et al.* 2000). In the marine environment,
20 48 these phenomena are mainly due to aquaculture and especially to shellfish farming, which
21 49 represents a major cause of introduction, intentional or not, of exogenous species (Elton 1958;
22 50 Carlton 1992).

23 51 Apart from potentially important economic consequences, the arrival of these
24 52 introduced species can also cause serious ecological impacts on local fauna. Introduced
25 53 species are likely to decrease the abundance of indigenous species, excluding them from part
26 54 of their distributional area or even causing their extinction by modifying invaded habitats,
27 55 hybridizing with native species, exchanging pathogens, preying on them, or competing with
28 56 them (e.g. Lockwood *et al.* 2007 and references therein). Moreover, when they exert strong
29 57 selective pressures, introduced species can also reduce the genetic diversity of native
30 58 populations (Kim *et al.* 2003; Wittmann *et al.* 2013).

31 59 Such impacts, although poorly known (e.g. Strauss *et al.* 2006), may have heavy
32 60 ecological consequences since adaptive potential depends on the genetic diversity of a

1
2
3
4
5
6
7 61 population. Reductions in genetic diversity are generally considered detrimental (e.g.
8
9 62 Frankham 1995; Lande 1995; Strauss *et al.* 2006) and ~~may lead~~ might contribute to extinction
10
11 63 (Wittmann *et al.* 2013). Thus, various authors showed a link between the fitness of a species
12
13 64 and its genetic diversity, particularly in mollusks (Mitton & Grant 1984; Garton & Haag 1991;
14
15 65 Zouros 1993; Launey & Hedgecock 2001; Hedgecock *et al.* 2007). ~~Conversely~~ In addition, the
16
17 66 reduced genetic variability of an indigenous population could promote the expansion process
18
19 67 of other species that are phylogenetically close. However, very few studies address changes in
20
21 68 ~~the evolution of~~ genetic diversity of an indigenous species under the competitive selection
22
23 69 pressure generated by a biological invader.

24
25 70 The oyster drills *Ocenebra erinacea* (Linnaeus, 1758) and ~~*Ocenebrellus*~~
26
27 71 ~~*inornatus*~~ *Ocenebra inornata* (Recluz, 1851) constitute a noteworthy model to study the
28
29 72 genetic effects of indigenous-invasive interactions on indigenous populations. A native of the
30
31 73 northwestern Pacific (Choe & Park 1997; Amano & Vermeij 1998), ~~*Ocenebrellus inornatus*~~ *O.*
32
33 74 *inornata* (previously known as *Ocenebrellus inornatus*; see Houart and Sirenko 2003; Bouchet
34
35 75 and Houart 2014) (Recluz, 1851) has recently invaded European coasts, probably following
36
37 76 massive oyster imports (Pigeot 2000; De Montaudouin & Sauriau 2000; review of Lützen *et*
38
39 77 *al.* 2012). Genetic data suggest that French populations may come from Asia and the United
40
41 78 States (Martel *et al.* 2004a). The introduction of ~~*O. inornatus*~~ *O. inornata* ~~may~~ has ~~very~~ important
42
43 79 economical consequences, as it is a predator of cultivated mollusks (e.g. oysters, blue mussels,
44
45 80 Gouilletquer *et al.* 2002). It coexists ~~on~~ at several French sites with an indigenous muricid,
46
47 81 ~~*O. enebra*~~ *O. erinacea* (Linnaeus, 1758), which ranges from the straits of Gibraltar to the
48
49 82 Netherlands, and inhabits all British and Mediterranean coasts (Graham 1988). Although *O.*
50
51 83 *erinacea* and ~~*O. inornatus*~~ *O. inornata* differ in some life history traits (Martel *et al.* 2004c),
52
53 84 ~~they~~ these muricid gastropods fill similar ecological niches, and may compete for habitat
54
55 85 (both species live on hard substrates and drill the shell of bivalves to feed on them; e.g.

1
2
3
4
5
6
7 86 | Lutzen et al 2012). Pigeot et al. (2000) recorded a decrease in population density of *O.*
8 87 | *erinacea*, in parallel to an increase in numbers of *O. inornata* in Marennes-Oléron
9 88 | (Charente-Maritime, France), between 1997 and 1999 (two years after the invasive was first
10 89 | detected). While the introduction and expansion patterns of ~~*O. inornatus*~~*O. inornata* have
11 90 | been investigated in previous studies (Martel et al. 2004a; Martel et al. 2004b), its ecological
12 91 | impacts ~~and the influence of on~~ the ~~local native *O. erinacea* species on its capacity of~~
13 92 | ~~integration~~ are poorly known.

14 93 | In previous studies (Martel 2003), seven allozyme loci were analyzed on populations
15 94 | of ~~*Ocenebra*~~*O. erinacea* and ~~*O. inornatus*~~*Ocenebra inornata* collected in 7 sites of the French
16 95 | Atlantic coast where the two species live in sympatry. These markers revealed genetic
17 96 | diversity indices systematically weaker within the native *O. erinacea* than within the invasive
18 97 | ~~*O. inornatus*~~*O. inornata*. This result was counterintuitive, as (i) the founder effect linked to an
19 98 | introduction event should lead to a low genetic diversity within the populations of the
20 99 | introduced species, (ii) this phenomenon should be all the more marked as the invasion is
21 100 | recent (review of Sakai et al. 2001). Consequently, a lower genetic diversity within the
22 101 | populations of the exogenous species compared to the populations of the indigenous species
23 102 | was expected. It is thus of importance to test whether the genetic diversity of the indigenous
24 103 | species *O. erinacea* is correlated with the presence of the introduced species ~~*O. inornatus*~~*O.*
25 104 | ~~*inornata*~~ in zones of sympatry. Indeed, ~~*O. inornatus*~~*O. inornata* could induce a selective
26 105 | pressure on *O. erinacea* leading to decrease of polymorphism in this local species.

27 106 | Here, we test this hypothesis by sampling ~~*Ocenebra*~~*O. erinacea* from the Atlantic and
28 107 | Mediterranean French coasts, in the presence and absence of ~~*O. inornatus*~~*Ocenebra inornata*,
29 108 | and by measuring genetic diversity of the native species using the mitochondrial marker *coxI*.
30 109 | While investigating the genetic effects that the presence of ~~*O. inornatus*~~*O. inornata* may have
31 110 | on sympatric populations of *O. erinacea*, we came across a very strong genetic break between

1
2
3
4
5
6
7 111 Atlantic and Mediterranean populations. This break is detailed and potential biogeographic
8
9 112 causes are discussed.

10 113

13 114 **Materials and methods**

14 115

17 116 Sampling

19 117 A total of 352 adult specimens of *Ocenebra erinacea* were collected between 1999 and
20
21 118 2004 at 15 sites on the French coast, along line transects (<200 m in length). At each site,
22
23 119 specimens from different rocks were collected to reduce sampling bias in favor of a particular
24
25 120 lineage. The sites were located both within oyster farming zones and unexploited areas (Table
26
27 121 | 1). In order to show a possible impact of the presence of *O. inornatus**Ocenebra inornata* on
28
29 122 genetic diversity of *O. erinacea*, five locations where the two species live in sympatry and 10
30
31 123 sites free of *O. inornatus**O. inornata* have been sampled. The presence of *O. inornata* was
32
33 124 assessed by direct observation. After collection, specimens were stored in 95% ethanol before
34
35 125 DNA extraction.

36 126

39 127 DNA extraction, amplification and sequencing

41 128 Total DNA was extracted from <15 mg of foot muscle using Dneasy™ Tissue Kit
42
43 129 according to the manufacturer's protocol (Qiagen, Germany). Part of the mitochondrial *coxI*
44
45 130 gene was PCR-amplified with the HCO2198/LCO1490 primers (Folmer *et al.* 1994), which
46
47 131 are have particularly proved useful for neogastropod studies (e.g. Harasewych *et al.* 1997 Zou
48
49 132 et al 2011, 2012). Polymorphism at *coxI* is high in *O. inornatus**Ocenebra inornata*, a
50
51 133 phylogenetically close species (Martel *et al.* 2004a).

1
2
3
4
5
6
7 134 PCRs were done in 50 μ L, with 1X PCR buffer, 1.85 mM MgCl₂, 125 μ M dNTPs,
8
9 135 0.25 μ M of each primer, 1.6 U of Red Hot® DNA Polymerase (ABgene) and about 10 ng of
10
11 136 DNA template. The following cycling profile was performed using a MJResearch PTC 100
12
13 137 Thermal Cycler: initial 5-min denaturation step at 94°C followed by 40 cycles of 30 sec at
14
15 138 94°C, 30 sec at 50°C and 1 min at 72°C, and by a final 5-min extension period at 72°C. PCR
16
17 139 products were purified using MultiScreen-PCR MANU03010 plates (Millipore).

18
19 140 Sequencing was done by GenoScreen (Lille - France) using an ABI PRISM® 3730 XL
20
21 141 Automated DNA Sequencer (Perkin-Elmer Applied Biosystems, Foster City, CA). Sequences
22
23 142 were aligned using ClustalX (Thompson *et al.* 1994).

24 25 143 26 27 144 Data analyses.

28
29 145 Genetic analyses aimed at (i) quantifying and comparing genetic diversity among
30
31 146 populations, (ii) analyzing the spatial distribution of polymorphism and genetic exchanges
32
33 147 among populations, and (iii) studying the evolutionary relationships among populations.
34
35 148 Haplotype number H , number of polymorphic sites S , haplotype diversity H_e/H_e and average
36
37 149 per site nucleotide diversity π (Nei 1987) were calculated for each population using the
38
39 150 software DnaSP 5.10.1 (Librado & Rozas 2009).

40
41 151 We tested the null hypothesis of the standard neutral model in Arlequin v.3.5 (Excoffier
42
43 152 & Lischer 2010), by calculating the D and F_s statistics, as defined by Tajima (1989) and Fu
44
45 153 (1997). In each location, we checked the demographic equilibrium of the populations in
46
47 154 Arlequin v.3.5, by calculating the D and F_s statistics, as defined by Tajima (1989) and Fu
48
49 155 (1996). When these statistics are significantly different from zero, populations may have
50
51 156 undergone purifying selection, a selective sweep and/or expansion (<0), or balancing selection
52
53 157 and/or a population decline or overdominant selection and/or a bottleneck (>0). Statistical

1
2
3
4
5
6
7 158 significance was tested by generating 10,000 random samples under the hypothesis of
8
9 159 selective neutrality and population equilibrium. These tests were performed for each sampling
10 160 site separately, and also for pooled sites in presence or absence of the invasive.

11
12
13 161 The differentiation index Φ_{ST} (Excoffier *et al.* 1992), an estimator of F_{ST} (Wright 1951)
14
15 162 calculated from frequency values and distances between haplotypes, was computed with
16
17 163 Arlequin v.3.5 (Excoffier & Lischer 2010). The Kimura 2 Parameter (K2P) model of
18
19 164 nucleotide substitution was used to estimate genetic distances, and 10,000 permutations were
20
21 165 used to test statistical significance under the null hypothesis of no difference between
22
23 166 populations (Excoffier *et al.* 1992).

24
25 167 Finally, a haplotype network was built using the median-joining algorithm
26
27 168 implemented in Network 4.6.1.1 (fluxus-engineering.com, Bandelt 1999). This method is one
28
29 169 of the most accurate for inferring intra-specific networks in the absence of recombination
30
31 170 (Woolley *et al.* 2008).

32
33 171 To help interpret the large genetic divergence observed between Atlantic and
34
35 172 Mediterranean specimens of *O.cenebra erinacea*, we looked for mitochondrial *cox1* data from
36
37 173 the BOLD database (Ratnasingham & Hebert 2007). However, besides three other BOLD
38
39 174 *cox1* sequences from Spanish specimens of *O. erinacea*, we produced the only available
40
41 175 mitochondrial sequences for the genus *Ocenebra*. We therefore used *cox1* sequences from
42
43 176 seven six species of the closely-related genus *Nucella* Röding, 1798 (e.g. Pascal 2004) to
44
45 177 measure intra-specific and inter-specific genetic distances. *Nucella* and *Ocenebra* are both
46
47 178 characterized by a non-planktonic larval development and lay egg capsules on hard substrates
48
49 179 (Martel *et al.* 2004c; review by Krug 2011). We used the K2P model of nucleotide
50
51 180 substitution (Kimura 1980), a widely used metric in DNA barcoding (Hebert *et al.* 2003;
52
53 181 Barrett & Hebert 2005), to measure genetic distances among *cox1* haplotypes.

1
2
3
4
5
6
7 183 **Results**

8 184

10 185 A 550 bp fragment of *cox1* was sequenced for 352 individuals, and 29 haplotypes were
11 186 identified (GenBank accession numbers AY995771-99; Popset 63109090). Sequences include
13 187 37 polymorphic sites, 20 of which are parsimony informative, and one of which has three
15 188 character states. No indels were observed (Table 2).

17
18 189

20 190 Population-level genetic diversity and demographic stability

22
23 191 Genetic diversity is comparable among Atlantic populations of *Ocenebra- erinacea*,
24 192 but values for the different diversity indices are low compared to other recently-studied
26 193 marine mollusks. The number of polymorphic sites between two different sequences varies
28 194 between 0 and 6 among Atlantic populations. Two of these populations (Morbihan and St
30 195 Quay) are each characterized by a single haplotype, and the 12 other Atlantic sites have no
32 196 more than five haplotypes (sample sizes provided in Table 1). Consequently, haplotype
34 197 diversity H_e is low, except for Oléron ($H_e = 0.564$; Table 2). In Fouras, where ~~Θ~~
36 198 ~~*inornatus*~~ *Ocenebra inornata* and *O. erinacea* are sympatric, the haplotype and nucleotide
38 199 diversities are respectively four- and six-fold higher in the invasive drill ($H_e = 0.348$ and π
40 200 $\times 10^{-3} = 0.8378$; data from Martel 2003) than in the local one ($H_e = 0.074$ and $\pi \times 10^{-3} = 0.14$).

42 201 A single Mediterranean population (Thau) was sampled. The haplotype diversity ($H_e =$
44 202 0.342) and the nucleotide diversity ($\pi \times 10^{-3} = 2.52$) are respectively two- and five-fold higher
46 203 than on the whole of Atlantic populations (Table 2). Moreover, 22 polymorphic sites were
48 204 found among 37 individuals sampled in Thau, a value considerably higher than the 24
50 205 polymorphic sites observed among 315 Atlantic individuals.

1
2
3
4
5
6
7
8
9
10
11
12
13
14
15
16
17
18
19
20
21
22
23
24
25
26
27
28
29
30
31
32
33
34
35
36
37
38
39
40
41
42
43
44
45
46
47
48
49
50
51
52
53
54
55
56
57
58
59
60

206 Last, haplotype and nucleotide diversities of *O-cenebra erinacea* populations co-
 207 occurring with *O-inornatusOcenebra inornata* were lower ($H_e = 0.247 \pm 0.0535$ and $\pi \times 10^{-3} =$
 208 0.57 ± 0.65) than for populations located in zones where *O-inornatusO. inornata* was not
 209 detected ($H_e = 0.399 \pm 0.3976$, $\pi \times 10^{-3} = 10.04 \pm 5.52$) (Table 2). However, this pattern is
 210 entirely due to the higher diversity encountered at Thau; when removing this site from the
 211 group of populations that were not found in contact with *O-inornatusO. inornata*, diversity
 212 values dropped significantly ($H_e = 0.179 \pm 0.0368$, $\pi \times 10^{-3} = 0.38 \pm 0.51$). Comparing
 213 molecular diversity at the site level revealed the same pattern (Welch Two Sample t-test,
 214 including Thau; for H_e : $t = -0.83$, $df = 6.22$, $p = 0.44$; for π : $t = -0.16$, $df = 12.81$, $p = 0.88$. In
 215 both cases, results were also non-significant when removing the population of Thau).

216 Except for one case, the D and F_s statistics were never positive (Table 2). Furthermore,
 217 the only slightly positive D value (deviation from zero non significant) was observed when
 218 sites where the invasive was absent were pooled, including Thau, and this result was therefore
 219 likely influenced by the underlying population structure (see “Genetic differentiation among
 220 populations” Results section). Except for one case (all sites without *O. inornatus* pooled,
 221 deviation from zero non significant), the D and F_s statistics were never positive. There is
 222 therefore no supporting evidence that *O-cenebra erinacea* populations exposed to *O-*
 223 *inornatusO. inornata* suffered from a population declinebottleneck. Some sites populations
 224 exhibited significant negative values of D and F_s , which can be interpreted as signs of
 225 purifying selection, selective sweep and/or population expansion. Particularly, the pooled
 226 Atlantic sites showed significantly negative values for both tests, regardless of whether the
 227 invasive was present or not. These molecular signatures must, however, be interpreted with
 228 care, as they might reflect older demographic events.

Phylogenetic-Generational relationships and spatial distribution of haplotypes

Two haplogroups, separated by 18 mutational steps, were observed using the median-joining network (Fig. 1). The first haplogroup (23 haplotypes) was mainly composed of Atlantic specimens, and included one specimen from Thau, characterized by haplotype H26 (separated from other Mediterranean haplotypes by 20 to 22 mutational steps). Haplotypes from this group diverged by ≤ 2 mutations. Haplotype H1 was common (represented in 89% of Atlantic individuals) and central to the Atlantic haplogroup, while the other 22 haplotypes were rare (7 individuals for H3, 3 for H13, 2 for H6, H9, H15, H19 and a single individual for the others) and peripheral to H1. The second haplogroup was strictly composed of Mediterranean individuals. Of six haplotypes from this group, one was common (H21, represented in 82% of Thau individuals), and four were rare (3 individuals for H22 and a single individual for H23-25). Haplotypes from this group diverged by one mutation. The Atlantic samples share no haplotype with the Mediterranean sample (Fig. 2). Except for H1 (present at all sites except Thau), H3 (shared between Loix and Aytré) and H13 (shared between Loix, Aytré and Trébeurden), all haplotypes are private (observed only within one population).

Genetic differentiation among populations

Genetic differentiation among pairs of populations was measured using Φ_{ST} . The population from Thau was significantly differentiated from all other populations. Pairwise Φ_{ST} values ranged between 0.94 and 0.96, corresponding to an ~~important~~-substantial genetic differentiation between the Mediterranean and Atlantic populations (Table 3). Inside the Atlantic group, no significant differentiation was observed after sequential Bonferroni correction (lowest corrected alpha level for Atlantic populations: 0.00055).

1
2
3
4
5
6
7 2548 255 Levels of intra-specific divergence in *Ocenebra* compared to *Nucella*9
10 256 Given the differences in haplotype composition and divergence between

11 257 Mediterranean and Atlantic sites, we investigated whether the genetic distances correspond to

12 258 intra- or inter-specific divergence by comparing *Ocenebra* to its close relative *Nucella*. The13 259 pairwise K2P distance between *Ocenebra* ~~*O.*~~ *erinacea* haplotypes ranged between 0.18 and

14 260 4.54% (maximum observed between haplotypes 20 from Loire and 25 from Thau Lagoon).

15 261 Within *Nucella*, K2P was calculated for 532 sequences and 117 haplotypes distributed among16 262 six species, along a 434 bp stretch of *cox1*. Intra-specific distances ranged from 0 to 3.32%,17 263 while inter-specific distance ranged from 4.81 to 12.2%, for specimens distributed over 100018 264 to 2000 km (East and West coasts of North America, respectively; BOLD database). For19 265 comparison, Zou et al (2011), analyzing 108 neogastropod *cox1* sequences (same gene region20 266 as analysed here; not including *Ocenebra* or *Nucella*) found maximum intra-specific K2P21 267 distances of 2.2% and minimum inter-specific distances of 2.1%.

22 268

23 269 **Discussion**

24 270

25 271 Relation between *Ocenebra erinacea* and the invasive species ~~*O. inornatus*~~ *Ocenebra*26 272 *inornata*

27 273 While a decrease in genetic diversity in response to invaders was reported in the past

28 274 (Kim *et al.* 2003), we did not detect such a pattern among *Ocenebra* ~~*O.*~~ *erinacea* exposed to29 275 the invasive species ~~*O. inornatus*~~ *Ocenebra inornata*. The relatively low polymorphism levels

30 276 recorded may have hampered our ability to detect genetic effects of the invasive on the native

31 277 species, and the use of ~~more sensitive~~ additional molecular markers such as nuclear

32 278 microsatellites or SNPs might further help detect possible demographic events associated with

33
34
35
36
37
38
39
40
41
42
43
44
45
46
47
48
49
50
51
52
53
54
55 12
56
57
58
59
60

1
2
3
4
5
6
7 279 | the presence ~~*O. inornatus*~~*O. inornata*. However, this remains to be tested, as even genome-
8
9 280 | wide scans can fail at detecting recent demographic events and selective pressures. Riquet *et*
10
11 281 | *al.* (2013), for instance, used AFLPs to compare native and invasive populations of the marine
12
13 282 | mollusk *Crepidula fornicata*. They reported little genetic differentiation among these
14
15 283 | populations, and detected no F_{ST} outliers out of 344 tested loci. An alternative hypothesis
16
17 284 | explaining the apparent absence of genetic effects of the invasive on the native is that the
18
19 285 | competitive and selective pressures inflicted on *O. erinacea* are too ~~mild~~low to have genetic
20
21 286 | effects (e.g. Wittmann *et al.* 2013). Finally, deviations from neutrality observed for pooled
22
23 287 | Atlantic sites suggest selection could have shaped the current genetic diversity and could have
24
25 288 | blurred signatures of demographic processes.

26
27 289 | *Ocenebra* ~~*O. inornatus*~~ invaded was first documented on the French Atlantic coast in
28
29 290 | ~~the 1997-2000~~s (De Montaudouin & Sauriau 2000, Pigeot *et al.* 2000), and the specimens of
30
31 291 | ~~*Ocenebra*~~ *erinacea* used in this study were collected between 1999 and 2004. The
32
33 292 | introduction of *O. inornata* may have been too recent at the time of sampling for genetic
34
35 293 | consequences on the native species to be detectable. About ten years later, the distributional
36
37 294 | landscape of ~~*O. inornatus*~~*O. inornata* on Atlantic coasts have significantly changed, and the
38
39 295 | invasive is now found as far north as the entrance of the Baltic Sea (Lützen *et al.* 2012). A
40
41 296 | new survey of the genetic diversity of *O. erinacea* may today unfold the genetic consequences
42
43 297 | of the invasion by ~~*O. inornatus*~~*O. inornata*, and this study therefore provides a snapshot in
44
45 298 | time that may help better understand the temporal dynamics of loss of genetic diversity. In
46
47 299 | addition to sampling in the field, we searched for *Ocenebra* specimens in the collections of
48
49 300 | the Museum national d'Histoire naturelle in Paris (France), in order to look for genetic
50
51 301 | diversity in *O. erinacea* specimens collected prior to, or soon after the invasion by *O. inornata*
52
53 302 | ~~*Ocenebrellus*~~ (MNHN voucher numbers IM-2008-7101, IM-2008-7102, IM-2008-7103).
54
55 303 | Unfortunately, we were not able to amplify the *coxI* marker from these specimens.

Remarkably low genetic diversity of *Ocenebra*-*erinacea* populations

Mitochondrial genetic diversity, as measured using part of *cox1*, was low relative to what was observed in other marine mollusks. Overall, *Ocenebra*-*erinacea* haplotype and nucleotide diversities were (disregarding the sample from Thau, see below) $H_e = 0.18-0.25$ and $\pi \times 10^{-3} = 0.38-0.57$ (Table 2). Comparatively, $H_e = 0.684$ and $\pi \times 10^{-3} = 2.25$ for *O. inornatus* *Ocenebra inornata* in its natural range (data from Martel *et al.* 2004a), $H_e = 0.734$ and $\pi \times 10^{-3} = 14.78$ in the gastropod *Cyclope neritea* (Simon-Bouhet *et al.* 2006), and $H_e = 0.720$ and $\pi \times 10^{-3} = 89.84$ in the bivalve *Macoma balthica* (Becquet *et al.* 2012).

The low genetic diversity observed at *cox1* was consistent with the low diversity observed using allozymes: Martel (2003) reported that the number of alleles N_{all} and the observed heterozygosity H_o characterizing the Atlantic populations of *Ocenebra erinacea* are respectively two to four times, and twenty to thirty times lower ($N_{all} = 1.1 \pm 0.1$; $H_o = 0.01 \pm 0.01$; mean \pm SD) than in other marine gastropods sampled in their native range, such as *Bedevea hanleyi* ($N_{all} = 2.2 \pm 0.1$, $H_o = 0.30 \pm 0.02$; Hoskin 2000), *Drupella sp.* ($N_{all} = 2.3 \pm 1.0$, $H_o = 0.25$; Johnson & Cumming 1995), and *Littorina striata* ($N_{all} = 4.2 \pm 1.0$, $H_o = 0.18 \pm 0.17$; De Wolf *et al.* 2000). Congruent patterns across mitochondrial and allozyme markers thus suggest a low genetic diversity in these populations rather than an absence of variability at *cox1*. Still, our sampling remains restricted compared to the native range of the species, and additional monitoring may reveal new patterns of genetic diversity.

Genetic diversity and connectivity among populations

The genetic diversity of the Mediterranean population was among the highest ~~str than that of each Atlantic population (except Oléron,~~ Table 2). The oyster farmers of the Thau

1
2
3
4
5
6
7 328 lagoon, one of the main shell farming areas of the French Mediterranean coasts, carry out
8
9 329 commercial exchanges with distant production sites, and *O-cenebra erinacea* is likely to be
10
11 330 transferred during these exchanges. In fact, the morphological survey done by Berrou *et al.*
12
13 331 (2004) evidenced exchanges ~~between-from~~ Oléron Island ~~and-to~~ Thau Lagoon (this is
14
15 332 congruent with the observation of the Atlantic haplotype H26 being observed at Thau; Figs. 1-
16
17 333 2). In our study, the high genetic diversity observed in Thau Lagoon could be the result of the
18
19 334 introduction of Mediterranean specimens imported from other production sites such as Oléron.
20
21 335 As no Mediterranean site was sampled other than Thau Lagoon, the artificial mixing induced
22
23 336 by shellfish exchanges cannot be further evaluated here.

24
25 337 Alternatively, the difference in genetic diversity observed between the Atlantic and the
26
27 338 Mediterranean population of Thau lagoon could be explained by historical and
28
29 339 biogeographical factors, and/or selection. *Ocenebra- erinacea* is not well -adapted to cold
30
31 340 water and Belgium currently constitutes the northern limit of its natural range (Graham 1988).
32
33 341 Consequently, the species may have found, as other marine species (e.g. Nikula & Väinölä
34
35 342 2003, Ladhar-Chaabouni *et al.* 2010), a refugium on the Iberian coast or in the Mediterranean
36
37 343 basin during past glaciations. *O. erinacea* may have disappeared from the French Atlantic
38
39 344 coasts during the Würm Glacial period (115,000 to 10,000 years BP) but survived on the
40
41 345 coasts of the Iberian peninsula, which is known as one of the major Pleistocene refugia
42
43 346 (Gómez & Lunz 2007). At the end of this climatic crisis, a reduced number of individuals
44
45 347 from southern refuges may have reached northern coasts. Maggs *et al.* (2008), reviewing
46
47 348 molecular signatures of glacial refugia on marine species, made predictions of low genetic and
48
49 349 haplotype diversity in northern regions previously covered by ice sheets, and comparatively
50
51 350 high diversity in refugial southern regions (and see Hewitt 1996). These predictions are
52
53 351 generally met for *O. erinacea*: a mitochondrial genealogy matching geography, but additional
54
55 352 sampling from the Iberian peninsula and the Mediterranean Sea would be necessary to further

1
2
3
4
5
6
7 353 characterize the historical biogeography of this species. Given *O. erinacea*'s maladaptation to
8 354 cold-water, another possibility is that selection (either purifying selection, or selective sweeps)
9 linked to differences in water temperature between Thau and the Atlantic sites produced the
10 355 observed patterns of genetic diversity. The negative Tajima's *D* and Fu's *F_s* observed for the
11 356 Atlantic population (in absence and presence of the invasive) would support this scenario, and
12 357 Hewitt's "northern purity, southern richness" genetic diversity pattern (Magg's et al. Model
13 358 Ha).
14
15
16
17
18
19

20 360 One potential consequence of biogeographic divergence between Atlantic and
21 361 Mediterranean populations is the emergence of new species (Hewitt 1996, 2004). Recently,
22 362 Salicini *et al.* (2013) have shown that in the bat *Myotis naterreri*, a complex of four cryptic
23 363 species exist in the Western Palearctic region (central and southern Europe, northwestern
24 364 Maghreb), each species coinciding with a glacial refugium. In *Ocenebra- erinacea*, inter-clade
25 365 divergence overlaps with the inter-specific distances observed in the closely-related genus
26 366 *Nucella* (even though the geographical distances separating *Nucella* specimens were greater
27 367 than the distances separating *O. erinacea* specimens; see Bergsten *et al.* 2012). In addition, *O.*
28 368 *erinacea* specimens from the Atlantic and Mediterranean can readily be distinguished using
29 369 morphology, and the morphological distance between Atlantic and Mediterranean *O. erinacea*
30 370 is comparable to what is observed between *O. erinacea* and *Ocenebra- brevirobusta* Houart
31 371 2000 (Berrou *et al.* 2004). It is therefore possible that the Atlantic and Mediterranean clades
32 372 sampled for this study belong to groups in incipient stages of speciation, or even undescribed
33 373 species.
34
35
36
37
38
39
40
41
42
43
44
45
46
47
48 374
49
50
51
52
53
54
55
56
57
58
59
60

1
2
3
4
5
6 375 **Acknowledgements**

7
8 376 We thank Stéphane Robert (IFREMER, La Tremblade, France), Yvonne Pascal, Michel
9
10 377 Pascal (INRA Rennes, France), François Siorat (LPO), Armel Deniau (LPO), Marie-Gabrielle
11
12 378 Vitre, Paul Wendling, Françoise Dreau, Christian Bussière, Isabelle Kuhne, Jean-Paul
13
14 379 Egreteau, José Simone Guézou, Sandrine Sourisseau, Xavier de Montaudouin (University of
15
16 380 Bordeaux, France), Pierre-Guy Sauriau (IFREMER, L'Houmeau, France) for their help with
17
18 381 field sampling, Jacques Pigeot for his insights and help with identifications, Stéphane Robert
19
20 382 (IFREMER, La Tremblade, France), Philippe Gouletquer (IFREMER, La Tremblade, France)
21
22 383 and Yves Pichot (IFREMER, Sète, France) for information on shellfish transfers in France,
23
24 384 Pierre Lozouet at the Muséum national d'Histoire naturelle (Paris, France) for granting access
25
26 385 to the *Ocenebra* collection, and Alice Saunier for her help in the lab. This work was funded
27
28 386 by the Conseil Général de Charente-Maritime and the Ministère de l'Ecologie et du
29
30 387 Développement Durable (Program INVABIO no. D4E/SRP/01115). Salaries for EP & AV
31
32 388 were covered by a grant to the Poitou-Charentes region (Contrat de Projet État-Région 2007-
33
34 389 2013), by a grant from the Fond Européen de Développement Régional (EP), and by Actions
35
36 390 Internationales et Rayonnement of the University of La Rochelle (AV). We thank the three
37
38 391 anonymous reviewers and the editor, whose comments significantly improved the manuscript.
39
40 392 This work is dedicated to the memory of Michel Pascal.

41 393

42
43
44 394 **References**

- 45
46 395 Amano, K., G.J. Vermeij (1998) Taxonomy and evolution of the genus *Ocinebrellus*
47
48 396 (Gastropoda: Muricidae) in Japan. *Paleontological Research*, **2**, 199-212.
49
50 397 Bandelt, H., P. Forster, et al. (1999) Median-joining networks for inferring intraspecific
51
52 398 phylogenies. *Molecular Biology and Evolution*, **16**, 37-48.

- 1
2
3
4
5
6
7 399 [Barrett, R., P.D.N. Hebert \(2005\) Identifying spiders through DNA barcodes. *Canadian*](#)
8
9 400 [Journal of Zoology, 83, 481–491.](#)
- 10 401 Becquet, V., B. Simon-Bouhet, et al. (2012) Glacial refugium versus range limit: conservation
11
12 402 genetics of *Macoma balthica*, a key species in the Bay of Biscay (France). *Journal of*
13
14 403 *Experimental Marine Biology and Ecology*, **432-433**, 73-82.
- 15
16 404 [Bergsten, J., D.T. Bilton, T. Fujisawa, et al. \(2012\) The effect of geographical scale of](#)
17
18 405 [sampling on DNA barcoding. *Systematic Biology*, 61, 851–869.](#)
- 19
20 406 Berrou, V., D. Merle, et al. (2004) Comparative morphology of Pliocene, Quaternary and
21
22 407 Recent shells of *Ocenebra erinaceus* (Linnaeus, 1758) and *O. brevirobusta* Houart,
23
24 408 2000 (Mollusca, Muricidae, Ocenebrinae): reflections on the intra- and interspecific
25
26 409 variations. *Geodiversitas*, **26**(2), 263-295.
- 27
28 410 [Bouchet, P., R. Houart \(2014\). *Ocenebra inornata* \(Récluz, 1851\). Accessed through: World](#)
29
30 411 [Register of Marine Species at](#)
31
32 412 <http://www.marinespecies.org/aphia.php?p=taxdetails&id=403745> on 2014-05-02.
- 33
34 413 Carlton, J.T. (1989) Man's role in changing the face of the ocean: biological invasions and
35
36 414 implications for conservation of near shore environments. *Conservation Biology* **3**: 265-
37
38 415 273.
- 39 416 Carlton, J.T. (1992) Introduced marine and estuarine mollusks of North America: an end-of-
40
41 417 the-20th-century perspective. *Journal of Shellfish Research*, **11**, 489-505.
- 42
43 418 Choe, B.L., J.K. Park (1997) Description of Muricid species (Gastropoda: Neogastropoda)
44
45 419 collected from the coastal areas of south Korea. *Journal of Biological Science*, **1**, 281-
46
47 420 296.
- 48
49 421 De Montaudouin, X., P.-G. Sauriau (2000) Contribution to a synopsis of marine species
50
51 422 richness in the Pertuis Charentais Sea with new insights in soft-bottom macrofauna of
52
53 423 the Marennes-Oléron Bay. *Cahiers de Biologie Marine*, **41**, 188-222.

- 1
2
3
4
5
6
7 424 De Wolf, H., R. Verhagen, et al. (2000) Large scale population structure and gene flow in the
8
9 425 planktonic developing periwinkle *Littorina striata* (Mollusca: Gastropoda), in
10
11 426 Macronésia. *Journal of Experimental Marine Biology and Ecology*, **246**, 69-83.
12
13 427 Elton, C. (1958). *The ecology of invasions by animals and plants*. University of Chicago
14
15 428 Press.
16
17 429 Excoffier, L., H.E.L. Lischer (2010) Arlequin suite ver 3.5: A new series of programs to
18
19 430 perform population genetics analyses under Linux and Windows. *Molecular Ecology*
20
21 431 *Resources*, **10**, 564-567.
22
23 432 Excoffier, L., P.E. Smouse, et al. (1992) Analysis of Molecular Variance Inferred From
24
25 433 Metric Distances Among DNA Haplotypes: Application to Human Mitochondrial DNA
26
27 434 Restriction Data. *Genetics*, **131**, 479-491.
28
29 435 Folmer, O., M. Black, et al. (1994) DNA primers for amplification of mitochondrial
30
31 436 cytochrome c oxidase subunit I from diverse metazoan invertebrates. *Molecular Marine*
32
33 437 *Biology and Biotechnology*, **3**, 294-299.
34
35 438 Frankham, R. (1995) Conservation genetics. *Annual Review of Genetics*, **29**, 305-327.
36
37 439 Fu, Y.-X. (1997) Statistical tests of neutrality of mutations against population growth,
38
39 440 hitchhiking and background selection. *Genetics*, **147**, 915-925.
40
41 441 ~~Fu, Y.-X. (1996) New Statistical Tests of Neutrality for DNA Samples From a Population.~~
42
43 442 ~~*Genetics*, **143**, 557-570.~~
44
45 443 Garton, D.W., W.R. Haag (1991) Heterozygosity, shell length and metabolism in the
46
47 444 European mussel, *Dreissena polymorpha*, from a recently established population in lake
48
49 445 Erie. *Comparative Biochemistry and Physiology*, **99**, 45-48.
50
51 446 Gouletquer, P., G. Bachelet, et al. (2002) Open Atlantic coast of Europe - a century of
52
53 447 introduced species into French waters. In: E. Leppäkoski, S. Gollash & S. Olenin (Eds).

- 1
2
3
4
5
6
7 448 *Invasive species of Europe - Distribution, impact and management*. Kluwer Academic
8
9 449 Publishers, Dordrecht / Boston / London.
- 10
11 450 Gómez, A., D.H. Lunt (2007) Refugia within Refugia: Patterns of Phylogeographic
12
13 451 Concordance in the Iberian Peninsula. In: S. Weiss, N. Ferrand (Eds). *Phylogeography of*
14
15 452 *Southern European Refugia*. Netherlands: Springer, volume III, pp. 155-188.
- 16
17 453 Graham, A. (1998). *Molluscs: Prosobranchs and Pyramidellid Gastropods: Keys and Notes*
18
19 454 *for the Identification of the Species*. Linnean Society of London.
- 20
21 455 ~~Harasewych, M.G., S.L. Adamkewicz, et al. (1997) Neogastropod phylogeny: a molecular~~
22
23 456 ~~perspective. *Journal of Molluscan Studies*, **63**, 327-351.~~
- 24
25 457 Hebert, P.D.N., A. Cywinska, et al. (2003) Biological identifications through DNA barcodes.
26
27 458 *Proceedings of the Royal Society of London Series B-Biological Sciences*, **270**, 313–321.
- 28
29 459 ~~Hedgecock, D., L. Jing-Zhong, S. DeCola, C.D. Haudenschield, E. Meyer, D.T. Manahan, B.~~
30
31 460 ~~Bowen (2007) Transcriptomic analysis of growth heterosis in larval Pacific oysters~~
32
33 461 ~~(*Crassostrea gigas*). *Proceedings of the National Academy of Sciences of the United States*~~
34
35 462 ~~*of America*, **104**, 2313-2318.~~
- 36
37 463 Hewitt, G.W. (1996) Some genetic consequences of ice ages, and their role in divergence and
38
39 464 speciation. *Biological Journal of the Linnean Society*, **58**, 247-276.
- 40
41 465 Hewitt, G.M. (2004) Genetic consequences of climatic oscillations in the quaternary.
42
43 466 *Philosophical transactions of the Royal Society of London. Series B, Biological Sciences*,
44
45 467 **359**, 183–195.
- 46
47 468 Hoskin, M.G. (2000) Effects of the east Australian current on the genetic structure of a direct
48
49 469 developing muricid snail (*Bedeva hanleyi*, Angas): variability within and among local
50
51 470 populations. *Biological Journal of the Linnean Society*, **69**, 245-262.
- 52
53
54
55
56
57
58
59
60

- 1
2
3
4
5
6
7 471 [Houart, R., B.I. Sirenko \(2003\) Review of the Recent species of *Ocenebra* Gray, 1847](#)
8 [and *Ocinebrellus* Jousseaume, 1880 in the Northwestern Pacific. *Ruthenica*, **13**, 53-74.](#)
9
10 473 Johnson, M.S., R.L. Cumming (1995) Genetic distinctness of three widespread and
11
12 474 morphologically variable species of *Drupella* (Gastropoda: Muricidae). *Coral Reefs*, **14**,
13
14 475 71-78.
15
16 476 Kim, M.S., S.D. Brunsfeld, et al. (2003) Effect of white pine blister rust (*Cronartium ribicola*)
17
18 477 and rust-resistance breeding on genetic variation in western white pine (*Pinus*
19
20 478 *monticola*). *Theoretical and Applied Genetics*, **106**, 1004-1010.
21
22 479 Kimura, M. (1980) A simple method for estimating evolutionary rates of base substitutions
23
24 480 through comparative studies of nucleotide-sequences. *Journal of Molecular Evolution*, **16**,
25
26 481 111–120.
27
28 482 [Krug, P. \(2011\) Patterns of speciation in marine gastropods: a review of the phylogenetic](#)
29 [evidence for localized radiations in the sea. *American Malacological Bulletin*, **29**, 169–186.](#)
30
31 483
32 484 Ladhari-Chaabouni, R., A. Hamza-Chaffai, et al. (2010) A pilot study of genetic differentiation
33
34 485 between two phenotypes of a Mediterranean population of the bivalve *Cerastoderma*
35
36 486 *glaucum* and genetic discrimination with other *Cerastoderma glaucum* and
37
38 487 *Cerastoderma edule* populations outside the Mediterranean. *Marine Ecology*, **31**, 355-
39
40 488 363.
41
42 489 Lande, R. (1995) Mutation and conservation. *Conservation Biology*, **9**, 782-791.
43
44 490 [Launey, S., D. Hedgecock \(2001\) High genetic load in the Pacific oyster *Crassostrea gigas*.](#)
45 [Genetics. **159**, 255-265](#)
46 491
47
48 492 Librado, P., J. Rozas (2009) DnaSP v5: A software for comprehensive analysis of DNA
49
50 493 polymorphism data. *Bioinformatics*, **25**, 1451-1452.
51
52 494 Lockwood, J.L., M.F. Hoopes, M.P. Marchetti (2007) *Invasion Ecology*. Blackwell Publishing,
53
54 495 Oxford, UK. 304 pp.

- 1
2
3
4
5
6
7 496 Lützen, J., M. Faasse, et al. (2012) The Japanese oyster drill *Ocenebrellus inornatus* (Récluz,
8 1851) (Mollusca, Gastropoda, Muricidae), introduced to the Limfjord, Denmark.
9 497
10 498 *Aquatic Invasions*, 7(2), 181-191.
11
12 499 Mack, R.N., D. Simberloff, et al. (2000) Biotic invasions: causes, epidemiology, global
13
14 500 consequences and control. *Ecological Application*, **10**, 690-710.
15
16 501 Maggs, C.A., R. Castilho, et al. (2008) Evaluating signatures of glacial refugia for North
17
18 502 Atlantic benthic marine taxa. *Ecology*, **89**, S108-S122.
19
20 503 Martel C. (2003) *Invasions biologiques et perturbations anthropiques des écosystèmes*
21
22 504 *littoraux : source, profil d'expansion et impacts d'un gastéropode marin*, *Ocenebrellus*
23
24 505 *inornatus*, *introduit accidentellement sur les côtes atlantiques françaises*. Doctoral thesis,
25
26 506 Université de La Rochelle. 122 pp & Annexes.
27
28 507 Martel, C., D. Bourguet, et al. (2004b) Invasion by the marine gastropod *Ocenebrellus*
29
30 508 *inornatus* in France. II. Expansion along the Atlantic coast. *Marine Ecology Progress*
31
32 509 *Series*, **273**, 163-172.
33
34 510 Martel, C., J.M. Guarini, et al. (2004c) Invasion by the marine gastropod *Ocenebrellus*
35
36 511 *inornatus* in France. III. Comparison of biological traits with the resident species
37
38 512 *Ocenebra erinacea*. *Marine Biology*, **146**, 93-102.
39
40 513 Martel, C., F. Viard, et al. (2004a) Invasion by the marine gastropod *Ocenebrellus inornatus*
41
42 514 in France. I. Scenario for the source of introduction. *Journal of Experimental Marine*
43
44 515 *Biology and Ecology*, **305**, 155-170.
45
46 516 Mitton, J.B., M.C. Grant (1984) Associations among protein heterozygosity, growth rate and
47
48 517 developmental homeostasis. *Annual review of Ecology and Systematics*, **15**, 479-499.
49
50 518 Mooney, H.A., E.E. Cleland (2001) The evolutionary impact of invasive species. *Proceedings*
51
52 519 *of the National Academy of Sciences of the United States of America*, **98**, 5446-5451.
53
54 520 Nei M. (1987) *Molecular Evolutionary Genetics*. Columbia University Press, New York.

- 1
2
3
4
5
6
7 521 Nikula, R., R. Väinölä (2003) Phylogeography of *Cerastoderma glaucum* (Bivalvia:
8
9 522 Cardiidae) across Europe: a major break in the Eastern Mediterranean. *Marine Biology*,
10 523 **143**, 339-350.
11
12 524 Pante, E., B. Simon-Bouhet (2013) marmap: A Package for Importing, Plotting and Analyzing
13
14 525 Bathymetric and Topographic Data in R. *PLoS One*, **8**(9), e73051.
15
16 526 Parmesan C., G. Yohe (2003) A globally coherent fingerprint of climate change impacts
17
18 527 across natural systems. *Nature*, **421**, 37-42.
19
20 528 Pascal P.-Y. (2004) *Rôle des espèces autochtones dans les processus d'invasions biologiques*
21
22 529 *marines: l'exemple du perceur invasif Ocinebrellus inornatus et du perceur autochtone*
23
24 530 *Ocenebra erinacea sur les côtes françaises*. Masters Thesis, Université de La Rochelle,
25
26 531 47pp.
27
28 532 Pigeot, J., P. Miramand, et al. (2000) Présence d'un nouveau prédateur de l'huître creuse,
29
30 533 *Ocinebrellus inornatus* (Recluz, 1851), dans le bassin conchylicole de Marennes-
31
32 534 Oléron. *Comptes-rendus de l'Académie des Sciences de Paris*, **323**, 697-703.
33
34 535 Ratnasingham, S., P.D.N. Hebert (2007) BOLD : The Barcode of Life Data System BOLD:
35
36 536 The Barcode of Life Data System (<http://www.barcodinglife.org>). *Molecular Ecology*
37
38 537 *Notes*, **7**, 355-364.
39
40 538 Riquet, F., C. Daguin-Thiébaud, et al. (2013) Contrasting patterns of genome-wide
41
42 539 polymorphism in the native and invasive range of the marine mollusc *Crepidula*
43
44 540 *forficata*. *Molecular Ecology*, **7**, 355-364.
45
46 541 Ruiz, G.M., T.K. Rawlings, et al. (2000) Global spread of microorganisms by ships: ballast
47
48 542 water discharged from vessels harbours a cocktail of potential pathogens. *Nature*, **408**,
49
50 543 49-50.
51
52 544 Sakai, A.K., F.W. Allendorf, et al. (2001) The population biology of invasive species. *Annual*
53
54 545 *Review of Ecology and Systematics*, **32**, 305-332.

- 1
2
3
4
5
6
7 546 Salicini I., C. Ibañez , et al. (2013) Deep differentiation between and within Mediterranean
8
9 547 glacial refugia in a flying mammal, the *Myotis nattereri* bat complex. *Journal of*
10 548 *Biogeography*, **40**, 1182–1193.
- 11
12 549 Seebens H., M.T. Gastner, et al. (2013) The risk of marine bioinvasion caused by global
13
14 550 shipping. *Ecology Letters*, **6**, 782-790.
- 15
16 551 Simon-Bouhet, B., P. Garcia-Meunier, et al. (2006) Multiple introductions promote range
17
18 552 expansion of the mollusc *Cyclope neritea* (Nassariidae) in France: evidence from
19
20 553 mitochondrial sequence data. *Molecular Ecology*, **15**, 1699-1711.
- 21
22 554 Strauss, S.Y., J.A. Lau, et al. (2006) Evolutionary responses of natives to introduced species:
23
24 555 what do introductions tell us about natural communities? *Ecology Letters*, **9**, 357-374.
- 25
26 556 Tajima, F. (1989) Statistical method for testing the neutral mutation hypothesis by DNA
27
28 557 polymorphism. *Genetics*, **123**(3), 585-595.
- 29
30 558 Thompson, J.D., T.J. Gibson, et al. (1997) The ClustalX windows interface: flexible strategies
31
32 559 for multiple sequence alignment aided by quality analysis tools. *Nucleic Acid Research*,
33
34 560 **24**, 4876-4882.
- 35
36 561 Wittman, M.J., M. Hutzenthaler, et al. (2013) Ecological and genetic effects of introduced
37
38 562 species on their native competitors. *Theoretical Population Biology*, **84**, 25-35.
- 39
40 563 Woolley, S.M., D. Posada, et al. (2008) A comparison of phylogenetic network methods using
41
42 564 computer simulation. *PLoS One*, **3**, e1913.
- 43
44 565 Wright, S. (1951) The genetical structure of populations. *Annals of Human Genetics*, **15**, 323-
45
46 566 354.
- 47 567 [Zou, S., O. Li, L. Kong, H. Yu, X. Zheng \(2011\) Comparing the Usefulness of Distance,](#)
48
49 568 [Monophyly and Character-Based DNA Barcoding Methods in Species Identification: A](#)
50
51 569 [Case Study of Neogastropoda. PLoS One, 6, e26619.](#)

1
2
3
4
5
6
7 570 [Zou, S., Q. Li, L. Kong \(2012\) Multigene barcoding and phylogeny of geographically](#)

8 571 [widespread muricids \(Gastropoda: Neogastropoda\) along the coast of china. *Marine*](#)

9
10 572 [Biotechnology](#), **14**, 21–34.

11
12 573 Zouros, E. (1993) Associative overdominance evaluating the effects of inbreeding and linkage

13
14 574 disequilibrium. *Genetica*, **89**, 35–46.

15
16 575

17
18
19
20
21
22
23
24
25
26
27
28
29
30
31
32
33
34
35
36
37
38
39
40
41
42
43
44
45
46
47
48
49
50
51
52
53
54
55
56
57
58
59
60

For Peer Review

576 Table 1. Sampling sites-*Ocenebra erinacea* Collection-collection sites (listed from North to
 577 South, following the coastline), site name abbreviations (Ab., as used in Figure 2), number of
 578 *O. erinacea* specimens collected and sequenced (n), geographical coordinates, year of
 579 collection, and characteristics of the locations: presence (+) or absence (-) of oyster farms and
 580 of *O. inornatus*/*O. inornata*.

Location	Ab.	n	Latitude	Longitude	Shellfish area	<i>O. inornatus</i>
Blainville	Bl	31	49°03' N	1°36' W	+	-
Chaussey	Ch	25	48°52' N	1°48' W	+	-
Saint Malo	SM	22	48°39' N	2°01' W	-	-
Saint Quay	SQ	23	48°39' N	2°50' W	-	-
Trébeurden	Tr	24	48°48' N	3°35' W	-	-
Crozon	Cr	23	48°17' N	4°27' W	-	-
Le Croisic	LC	22	47°18' N	2°31' W	-	-
Morbihan	Mo	12	47°33' N	2°51' W	-	-
Bourgneuf	Bo	24	47°01' N	2°01' W	+	+
Loix	Lo	28	46°13' N	1°24' W	+	+
Aytré	Ay	20	46°06' N	1°07' W	+	+
Fouras	Fo	27	46°00' N	1°07' W	+	+
Oléron	Ol	13	45°53' N	1°10' W	+	+
Areache	Ar	21	44°40' N	1°12' W	+	-
Thau	Th	37	43°24' N	3°35' W	+	-

Location	Ab.	n	Latitude	Longitude	Year of collection	Shellfish area	Presence of <i>O. inornata</i>
<u>Blainville</u>	<u>Bl</u>	<u>31</u>	<u>49°03' N</u>	<u>1°36' W</u>	<u>2003</u>	<u>+</u>	<u>-</u>
<u>Chaussey</u>	<u>Ch</u>	<u>25</u>	<u>48°52' N</u>	<u>1°48' W</u>	<u>2003</u>	<u>+</u>	<u>-</u>
<u>Saint Malo</u>	<u>SM</u>	<u>22</u>	<u>48°39' N</u>	<u>2°01' W</u>	<u>2004</u>	<u>-</u>	<u>-</u>
<u>Saint Quay</u>	<u>SQ</u>	<u>23</u>	<u>48°39' N</u>	<u>2°50' W</u>	<u>2004</u>	<u>-</u>	<u>-</u>
<u>Trébeurden</u>	<u>Tr</u>	<u>24</u>	<u>48°48' N</u>	<u>3°35' W</u>	<u>2004</u>	<u>-</u>	<u>-</u>
<u>Crozon</u>	<u>Cr</u>	<u>23</u>	<u>48°17' N</u>	<u>4°27' W</u>	<u>2004</u>	<u>-</u>	<u>-</u>
<u>Le Croisic</u>	<u>LC</u>	<u>22</u>	<u>47°18' N</u>	<u>2°31' W</u>	<u>2004</u>	<u>-</u>	<u>-</u>
<u>Morbihan</u>	<u>Mo</u>	<u>12</u>	<u>47°33' N</u>	<u>2°51' W</u>	<u>2004</u>	<u>-</u>	<u>-</u>

<u>Bourgneuf</u>	<u>Bo</u>	<u>24</u>	<u>47°01' N</u>	<u>2°01' W</u>	<u>2003</u>	<u>±</u>	<u>±</u>
<u>Loix</u>	<u>Lo</u>	<u>28</u>	<u>46°13' N</u>	<u>1°24' W</u>	<u>2003</u>	<u>±</u>	<u>±</u>
<u>Aytré</u>	<u>Ay</u>	<u>20</u>	<u>46°06' N</u>	<u>1°07' W</u>	<u>2003</u>	<u>±</u>	<u>±</u>
<u>Fouras</u>	<u>Fo</u>	<u>27</u>	<u>46°00' N</u>	<u>1°07' W</u>	<u>2004</u>	<u>±</u>	<u>±</u>
<u>Oléron</u>	<u>Ol</u>	<u>13</u>	<u>45°53' N</u>	<u>1°10' W</u>	<u>2004</u>	<u>±</u>	<u>±</u>
<u>Arcachon</u>	<u>Ar</u>	<u>21</u>	<u>44°40' N</u>	<u>1°12' W</u>	<u>1999</u>	<u>±</u>	<u>-</u>
<u>Thau</u>	<u>Th</u>	<u>37</u>	<u>43°24' N</u>	<u>3°35' W</u>	<u>1999</u>	<u>±</u>	<u>-</u>

582

583

For Peer Review

Table 2. Molecular diversity of populations and results of the neutrality tests. The number of segregating sites (S), the number of haplotypes (H), the haplotype diversity ($H_e \pm$ one standard deviation), and the nucleotide diversity ($\pi \pm$ one standard deviation) are given for each sampling site, site groups in presence and in absence of the invasive (with and without the Mediterranean population of Thau), and for the entire data set. Sites where *O. inornatus* was present are indicated by an asterisk. For neutrality tests of Tajima and Fu, statistical significance after sequential Bonferroni correction is indicated with an asterisk.

Sampling sites	S	H	$H_e \pm SD$	$\pi \pm SD (x10^{-3})$	Tajima's D	Fu's F_s
Blainville	1	2	0.065 \pm 0.059	0.12 \pm 0.28	-1.14	-1.24*
Chaussey	3	4	0.230 \pm 0.110	0.44 \pm 0.58	-1.73	-3.08*
Saint Malo	1	2	0.091 \pm 0.081	0.17 \pm 0.34	-1.16	-0.96
Saint Quay	0	1	0	0	0.00	0.00
Trébeurden	5	5	0.377 \pm 0.122	0.90 \pm 0.89	-1.83	-2.80*
Crozon	2	3	0.316 \pm 0.118	0.60 \pm 0.70	-0.86	-0.87
Le-Croisie	4	4	0.333 \pm 0.124	0.81 \pm 0.84	-1.67	-1.74
Morbihan	0	1	0	0	0.00	0.00
Bourgneuf*	2	2	0.083 \pm 0.075	0.30 \pm 0.47	-1.51	-0.19
Loix*	5	5	0.270 \pm 0.109	0.65 \pm 0.72	-2.01*	-3.57*
Aytré*	4	4	0.363 \pm 0.131	0.89 \pm 0.89	-1.64	-1.61
Fouras*	1	2	0.074 \pm 0.067	0.14 \pm 0.30	-1.15	-1.12
Oléron*	2	3	0.564 \pm 0.112	1.12 \pm 1.06	-0.13	-0.17
Arcahon	1	2	0.095 \pm 0.084	0.17 \pm 0.35	-1.16	-0.92
Thau	22	6	0.342 \pm 0.098	2.52 \pm 1.76	-2.50*	-0.42
Sites in presence of invasive	11	9	0.247 \pm 0.0535	0.57 \pm 0.65	-2.10*	-9.42*
Sites in absence of invasive	31	22	0.399 \pm 0.3976	10.04 \pm 5.52	0.22	-0.06
Sites in absence of invasive (without Thau)	16	16	0.179 \pm 0.0368	0.38 \pm 0.51	-2.38*	<-10*
All populations	37	29	0.356 \pm 0.0325	7.63 \pm 4.20	-0.81	-4.97
Sampling sites	S	H	$H_e \pm SD$	$\pi \pm SD (x10^{-3})$	Tajima's D	Fu's F_s
Blainville	1	2	0.065 \pm 0.059	0.12 \pm 0.28	-1.14	-1.24*
Chaussey	3	4	0.230 \pm 0.110	0.44 \pm 0.58	-1.73	-3.08*
Saint Malo	1	2	0.091 \pm 0.081	0.17 \pm 0.34	-1.16	-0.96

<u>Saint Quay</u>	<u>0</u>	<u>1</u>	<u>0</u>	<u>0</u>	<u>0</u>	<u>0</u>
<u>Trébeurden</u>	<u>5</u>	<u>5</u>	<u>0.377 ± 0.122</u>	<u>0.90 ± 0.89</u>	<u>-1.83</u>	<u>-2.80*</u>
<u>Crozon</u>	<u>2</u>	<u>3</u>	<u>0.316 ± 0.118</u>	<u>0.60 ± 0.70</u>	<u>-0.86</u>	<u>-0.87</u>
<u>Le Croisic</u>	<u>4</u>	<u>4</u>	<u>0.333 ± 0.124</u>	<u>0.81 ± 0.84</u>	<u>-1.67</u>	<u>-1.74</u>
<u>Morbihan</u>	<u>0</u>	<u>1</u>	<u>0</u>	<u>0</u>	<u>0</u>	<u>0</u>
<u>Bourgneuf *</u>	<u>2</u>	<u>2</u>	<u>0.083 ± 0.075</u>	<u>0.30 ± 0.47</u>	<u>-1.51</u>	<u>-0.19</u>
<u>Loix *</u>	<u>5</u>	<u>5</u>	<u>0.270 ± 0.109</u>	<u>0.65 ± 0.72</u>	<u>-2.01*</u>	<u>-3.57*</u>
<u>Aytré *</u>	<u>4</u>	<u>4</u>	<u>0.363 ± 0.131</u>	<u>0.89 ± 0.89</u>	<u>-1.64</u>	<u>-1.61</u>
<u>Fouras *</u>	<u>1</u>	<u>2</u>	<u>0.074 ± 0.067</u>	<u>0.14 ± 0.30</u>	<u>-1.15</u>	<u>-1.12</u>
<u>Oléron *</u>	<u>2</u>	<u>3</u>	<u>0.564 ± 0.112</u>	<u>1.12 ± 1.06</u>	<u>-0.13</u>	<u>-0.17</u>
<u>Arcachon</u>	<u>1</u>	<u>2</u>	<u>0.095 ± 0.084</u>	<u>0.17 ± 0.35</u>	<u>-1.16</u>	<u>-0.92</u>
<u>Thau</u>	<u>22</u>	<u>6</u>	<u>0.342 ± 0.098</u>	<u>2.52 ± 1.76</u>	<u>-2.50*</u>	<u>-0.42</u>
<u>Sites in presence of invasive</u>	<u>11</u>	<u>9</u>	<u>0.247 ± 0.0535</u>	<u>0.57 ± 0.65</u>	<u>-2.10*</u>	<u>-9.42*</u>
<u>Sites in absence of invasive</u>	<u>31</u>	<u>22</u>	<u>0.399 ± 0.3976</u>	<u>10.04 ± 5.52</u>	<u>0.22</u>	<u>-0.06</u>
<u>Sites in absence of invasive (without Thau)</u>	<u>16</u>	<u>16</u>	<u>0.179 ± 0.0368</u>	<u>0.38 ± 0.51</u>	<u>-2.38*</u>	<u>< -10*</u>
<u>All populations</u>	<u>37</u>	<u>29</u>	<u>0.356 ± 0.0325</u>	<u>7.63 ± 4.20</u>	<u>-0.81</u>	<u>-4.97</u>

594

595

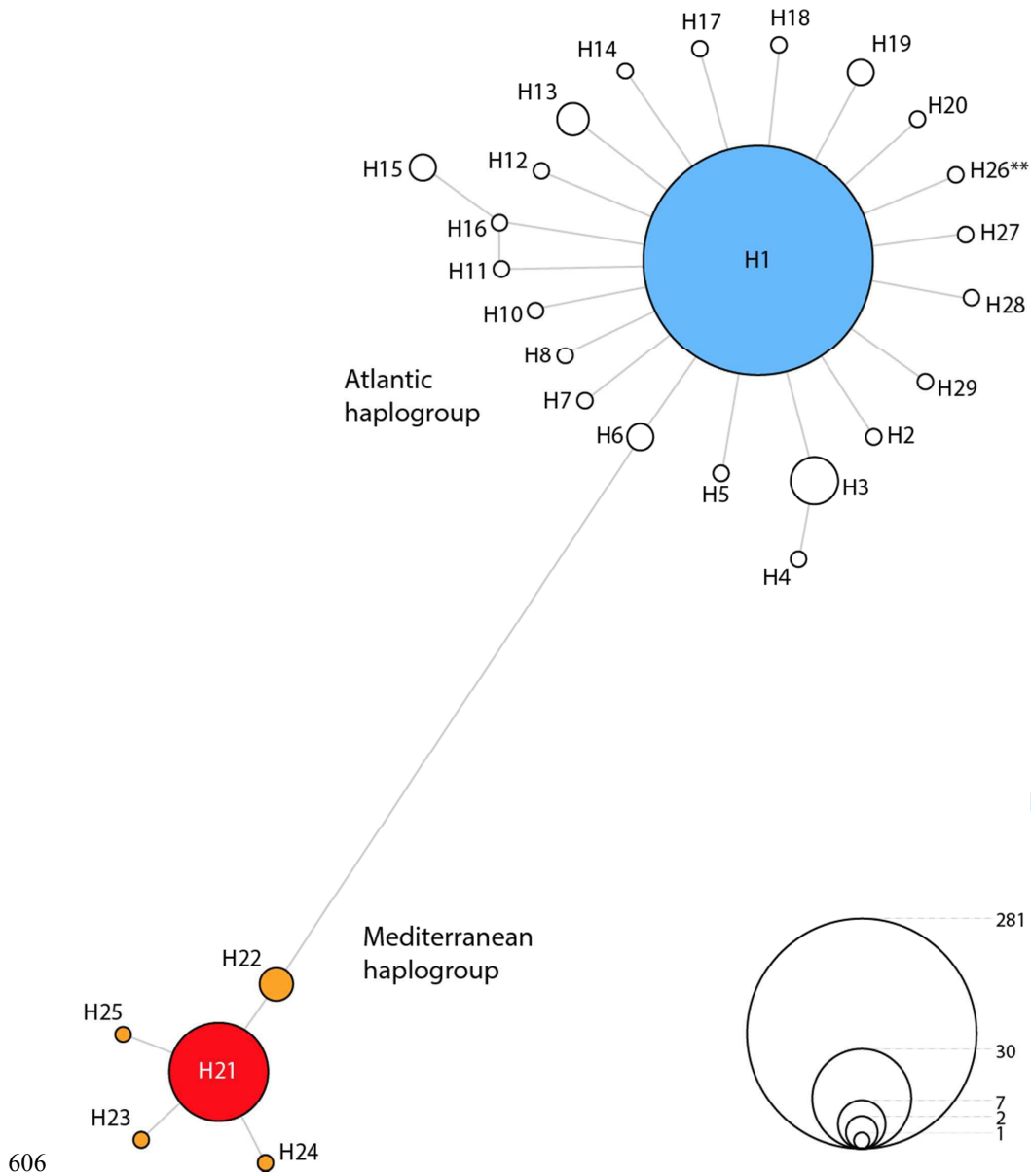
1
2
3
4
5
6
7
8
9
10
11
12
13
14
15
16
17
18
19
20
21
22
23
24
25
26
27
28
29
30
31
32
33
34
35
36
37
38
39
40
41
42
43
44
45
46
47
48
49

596 Table 3. Pairwise Φ_{ST} values calculated using the Kimura 2 Parameter model of nucleotide substitution. Only pairwise comparisons involving the
597 population of Thau are statistically significant after sequential Bonferroni correction ($p=0$).
598

	1	2	3	4	5	6	7	8	9	10	11	12	13	14	15
1. Blainville	0														
2. Chausey	0.0048	0													
3. Saint Malo	0.00242	0.00244	0												
4. Saint Quay	0.01001	0.00356	0.00207	0											
5. Trebeurden	0.02194	0.01045	0.00921	0.01207	0										
6. Crozon	0.05037	0.02772	0.03452	0.04529	0.02682	0									
7. Le Croisic	0.03001	0.01442	0.01577	0.02118	0.01654	0.01135	0								
8. Morbihan	0.03708	0.03371	0.03067	0	0.02156	0.00476	0.01543	0							
9. Bourgneuf	0.00458	0.00021	0.00102	0.00181	0.01083	0.0316	0.01598	0.03274	0						
10. Loix	0.00242	-0.0008	0.00559	0.00747	0.00258	0.02217	0.012	-0.0358	0.01337	0					
11. Aytré	0.03811	0.01838	0.02156	0.0293	0.00956	0.03281	0.02045	0.01049	0.00555	0.01096	0				
12. Oleron	0.28743	0.18725	0.23275	0.28709	0.1342	0.16138	0.13706	0.18898	0.15611	0.12163	0.04004	0			
13. Fouras	0.0004	0.00162	0.00096	0.00611	0.01656	0.04351	0.02394	0.03502	0.00196	0.00096	0.03104	0.26425	0		
14. Arcachon	0.0032	0.00323	0.00014	0.00443	0.00763	0.03266	0.01404	0.02941	0.00153	0.00658	0.01955	0.22606	0.00145	0	
15. Thau	0.96208	0.95559	0.95617	0.95856	0.94988	0.95236	0.95001	0.94928	0.95614	0.9547	0.9484	0.94167	0.95959	0.95541	0

599
600

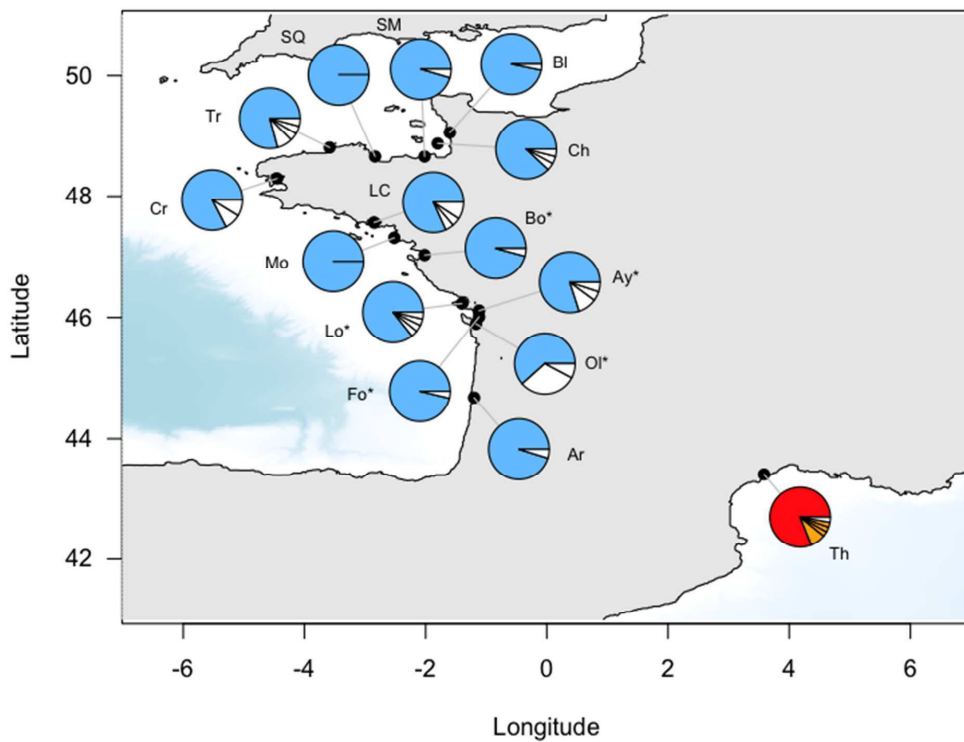
601 Fig. 1. Median-joining haplotype network. Each circle represents a haplotype, which
602 frequency is proportional to circle diameter (legend: bottom right).
603 Distances between haplotypes are proportional to the number of mutation events (see text).
604 The Atlantic haplogroup contains one Mediterranean population, represented by haplotype
605 H26 (marked with **).



606

31

1
2
3
4
5
6
7 607 Fig. 2. Distribution of haplotype frequencies along the French coast. Abbreviations for site
8 608 names are detailed in Table 1. Haplotype colors correspond to the colors used in Figure 1. The
9
10 609 stations where both *Ocenebra- erinacea* and *O. inornatus* were observed
11
12 610 are marked with an asterisk. Map constructed with R package marmap (Pante & Simon-
13
14 611 Bouhet 2013).



Formatted: Font: (Default) Times New Roman

612
613