



HAL
open science

Structural evolution of the Kopeh Dagh fold-and-thrust belt (NE Iran) and interactions with the South Caspian Sea Basin and Amu Darya Basin

Alexandra M.M. Robert, Jean Letouzey, Mohammad A. Kavooosi, Sharham Sherkati, Carla Müller, Jaume Vergés, Abdollah Aghababaei

► **To cite this version:**

Alexandra M.M. Robert, Jean Letouzey, Mohammad A. Kavooosi, Sharham Sherkati, Carla Müller, et al.. Structural evolution of the Kopeh Dagh fold-and-thrust belt (NE Iran) and interactions with the South Caspian Sea Basin and Amu Darya Basin. *Marine and Petroleum Geology*, 2014, 57, pp.68-87. 10.1016/j.marpetgeo.2014.05.002 . hal-01063954

HAL Id: hal-01063954

<https://hal.science/hal-01063954>

Submitted on 15 Sep 2014

HAL is a multi-disciplinary open access archive for the deposit and dissemination of scientific research documents, whether they are published or not. The documents may come from teaching and research institutions in France or abroad, or from public or private research centers.

L'archive ouverte pluridisciplinaire **HAL**, est destinée au dépôt et à la diffusion de documents scientifiques de niveau recherche, publiés ou non, émanant des établissements d'enseignement et de recherche français ou étrangers, des laboratoires publics ou privés.

Structural evolution of the Kopet Dagh fold-and-thrust belt (NE Iran) and interactions with the South Caspian Sea Basin and Amu Darya Basin

Alexandra M. M. Robert^{a,b}, Jean Letouzey^c, Mohammad A. Kavoozi^d, Sharham Sherkati^d, Carla Müller^c, Jaume Vergés^b, Abdollah Aghababaei^d

^a*Géosciences Environnement Toulouse (GET), Observatoire de Midi-Pyrénées, Université de Toulouse, CNRS, IRD, F-31400 Toulouse, France, (alexandra.robert@get.obs-mip.fr)*

^b*Group of Dynamics of the Lithosphere (GDL), Institute of Earth Sciences Jaume Almera, ICTJA-CSIC, c Lluís Solé i Sabaris s/n, 08028 Barcelona, Spain*

^c*Institut des Sciences de la Terre Paris (iSTeP), Sorbonne Universités, UPMC Univ Paris 06, UMR 7193, F-75005 Paris, France*

^d*National Iranian Oil Company Exploration Directorate, 1st Dead-end, Seoul Street, NE Sheikh Bahaei Square, Tehran, Iran*

Abstract

We present a detailed stratigraphic and structural study of the Kopet Dagh fold-and-thrust belt in NE Iran, which is an investigation of the complex polyphased tectonic history of this belt and its links with the adjacent South Caspian Sea and Amu Darya basins. Based on numerous field surveys, a large amount of 2D and 3D seismic data, borehole data and more than 150 new biostratigraphic datings, a new detailed biostratigraphic chart and 4 main regional cross-sections illustrate the importance of lateral facies variations and structural inheritance in the present-day structure of the belt.

After the Cimmerian orogeny corresponding to the closure of the Paleotethys Ocean in Late Triassic/Early Jurassic times, a Middle Jurassic post-collisional rifting event was associated with the deposition of one of the main source rocks of the Kopet Dagh and the Amu Darya Basin (Kashafrud Formation). Following this rifting event, over 7 km of sediments were accumulated until the Tertiary above a regional post-Triassic unconformity. The occurrence of local uplifts during the Late Cretaceous-Early Paleocene is interpreted as a consequence of regional-scale modification of plate-slab coupling in the Neotethys subduction zone. The main inversion of the Kopet Dagh occurred at Late Eocene times, when the far-field deformation developed in Eurasia as a consequence of the locking of the Neo-Tethys subduction. This folding phase is sealed in the western part of the belt by a major Eocene-Oligocene unconformity at the base of the thick sedimentary series belonging to the South Caspian Sea Basin. The bulk of sedimentary infill in the South Caspian Sea Basin is Oligocene and younger, and it is probably related to syn-compressional downward flexure of the resistant basement basin at the onset of the Alpine phase. In the eastern part of the Kopet Dagh, this deformation is characterized by Middle Jurassic graben inversion with evidences of forced-folding, short-cuts and as well by larger scale basement uplifts. In contrast, the northwestern part of the belt shows thrust faults involving basement and fault-propagation folds within the sedimentary sequence. The Kopet Dagh presents tectonic structures that are parallel to the Paleotethys suture zone, which emphasizes the importance of the structural inheritance and inversion processes during the structural evolution of the belt. Finally, a change from a mostly dip-slip to a mostly strike-slip tectonics occurred during the Pliocene within the Kopet Dagh as a consequence of a major tectonic reorganization in North-East Iran.

Keywords: Kopet Dagh, Amu Darya Basin, South Caspian Sea Basin, Inverted Rift System, Structural Geology, Seismic Sections

1. Introduction

Iran extended deformed zone is surrounded by the epivariscan Turan Platform to the NE, which is part of stable Eurasia and by the Arabian Plate to the SW (Figure 1a). The Iranian geology is dominated by the long-standing convergence history between Eurasia and Gondwanan-derived terranes as indicated by numerous ophiolitic belts, fold-and-thrusts belts and resistant blocks that remain within the deformation zone. Two major compressional events, as a consequence of oceanic closures are described in Iran: (1) the Cimmerian orogeny, which is related to the closure of the Paleotethys Ocean and (2) the Alpine orogeny as a result of the closure of the Neotethys Ocean. In northeastern Iran, the Paleotethys Ocean separated the Eurasian Plate from Central Iranian blocks whereas the Neotethys Ocean opened on the southern margin of the Central Iranian blocks during the Permian (Muttoni et al., 2009) (Figure 1a). Besides, several ophiolitic domains (Nain Baft, Sabzevar, Sistan) cross-cut Central Iran and are interpreted as remnants of small oceanic domains that opened as small back-arc basins during the Early Cretaceous for the Sistan Ocean, and during the Late Cretaceous for the Sabzevar and Nain Baft domains (Agard et al., 2011). The start of the subduction of these small oceanic domains is considered to be Turonian-Maastrichtian (Saccani et al., 2010) and active subduction of the Sistan Ocean up to the end of the Late Cretaceous has been recently evidenced (Bröcker et al., 2013). These small domains were closed during Paleocene to Eocene times (Agard et al., 2011).

In northeastern Iran, the Paleotethys suture zone corresponds to the boundary between the Kopet Dagh fold-and-thrust belt to the NE, and the eastern prolongation of the Alborz range to the SW (Figure 1a). Remnants of the Paleotethys Ocean are located within the Binalud Mountains where the Cimmerian event is characterized by a collisional type event during the Late Triassic/Early Jurassic (Sheikholeslami and Kouhpeym, 2012). Following this collision, the Kopet Dagh Basin was deposited on the southern margin of the Eurasian Plate from the Jurassic to the Tertiary (Brunet et al., 2003). This basin was inverted during the Tertiary, because of the NE oriented convergence between Central Iranian blocks and the Eurasian plate. Several authors studied the metamorphism and the deformation associated with the closure of the Paleotethys, but there are still few data on the structural and sedimentary evolution within the Kopet Dagh after the Cimmerian orogeny. Understanding the evolution of the Kopet Dagh is important, because of its direct link with the Amu Darya Basin to the NE and with the South Caspian Sea Basin where lithological and structural information on Mesozoic rocks are rare, because of the important thickness of Tertiary sediments. The Amu Darya Basin is a large basin that subsided during the Mesozoic after the closure of the Paleotethys Ocean and which is located in Turkmenistan and Uzbekistan extending southwestward into Iran and southeastward into Afghanistan (Ulmishek, 2004). This basin is a highly productive oil and gas province which contains numerous giant gas fields such as Dauletabad, Yoloten, Shaltyk, Bayram-Ali or Achak (see location on Figure 1b) (Ulmishek, 2004). Two important gas fields are located to the East of the Kopet Dagh: the

Khangiran and the Gonbadli, which produce from the Upper Jurassic carbonates (Mozduran Formation) and the Lower Cretaceous siliciclastics (Shurijeh Formation) (Afshar-Harb, 1979; Aghanabati, 2004; Kavooosi et al., 2009a). These two gas fields are located in anticlinal traps (Moussavi-Harami and Brenner, 1992) that include the 35 km-wide Khangiran anticline. The volume of recoverable gas reserves at Khangiran was estimated at 16.9 trillion cubic feet by Iran Oil Ministry (2000) and the gas is piped from refineries to cities in northeastern Iran. The main source rocks are considered to be the Middle Jurassic shales and carbonates of the Chaman Bid Formation and the Upper Bajocian to Bathonian shales of the Kashafrud Formation. In this article, we will focus on the structural evolution of Kopet Dagh fold-and-thrust belt, with new stratigraphic and structural data, in order to set up the sedimentary and structural evolution of the belt since the closure of the Paleotethys Ocean in Late Triassic/Early Jurassic times. We will discuss the links between deformation in the Kopet Dagh and sedimentation in the adjacent Amu Darya and South Caspian Sea basins.

2. Geological settings

2.1. Location and Morphology

This range marks the northern limit of the Alpine-Himalayan orogeny in northeastern Iran and it also corresponds to the morphological boundary between Turkmenistan and Iran which separates Eurasia from Central Iran over more than 600km (Figure 1a.). The Kopet Dagh belt is an intra continental range and its topography dies out southeastwards towards Afghanistan, indicating the lack or small amount of recent active tectonics in this part of the belt. The Kopet Dagh range presents moderate elevations reaching 3120 m high in the southeastern part of the belt to the North of Mashad city (Kuhha-ye Hezar Masjed summit). The Main Kopet Dagh Fault marks the northeastern boundary of the belt and corresponds to a major inherited crustal-scale structure (Amurskiy, 1971; Maggi et al., 2000). The presence of the Main Kopet Dagh Fault as a major inherited structure is responsible of the localization of the deformation in the narrow Kopet Dagh fold-and-thrust belt (Lyberis and Manby, 1999). This 350 km-long fault delimits the southwestern boundary of the Kopet Dagh foredeep, part of the Amu Darya Basin deposited on the southern margin of the Eurasian Plate (Vernant et al., 2004) (Figure 1b). To the northwest, the Kopet Dagh belt is expressed as the Apsheron-Balkhan belt, delimiting the northern boundary of the South Caspian Sea Basin (Brunet et al., 2003) The southern boundary of the Kopet Dagh range is delimited by the Paleotethys suture zone marked by the Binalud Mountains (Wilmsen et al., 2009; Sheikholeslami and Kouhpeym, 2012) (Figure 1a.). To the SW of this suture zone, rocks are considered a prolongation of the Alborz fold-and-thrust belt (Alavi, 1992; Wilmsen et al., 2009).

2.2. Geodynamic context

The Cimmerian belt marks the collision of the Iran Plate with the southern Eurasian margin (Sengor, 1990; Zanchi et al., 2006). The upper age limit of this collision is Late Triassic,

110 as the Upper Triassic-Middle Jurassic Shemshak Group seals¹⁶⁴
111 unconformably Cimmerian structures affecting the Paleozoic¹⁶⁵
112 Middle Triassic sequences of northern Alborz (Muttoni et al.,¹⁶⁶
113 2009; Zanchi et al., 2006). The Kopet Dagh Basin was de¹⁶⁷
114 posited after the Cimmerian orogeny (Garzanti and Gaetani,¹⁶⁸
115 2002) and more than 7 km of post-Triassic sediments were ac¹⁶⁹
116 cumulated in this basin (Moussavi-Harami and Brenner, 1992).¹⁷⁰
117 The onset of uplift within the Kopet Dagh is considered to¹⁷¹
118 have begun after 30Ma (Berberian and King, 1981; Golonka,¹⁷²
119 2004; Hollingsworth et al., 2010). Lyberis and Manby (1999)¹⁷³
120 proposed that the inversion of the margin occurred during the¹⁷⁴
121 Late Miocene as a response to the North-South convergence¹⁷⁵
122 between Iran and Eurasian plates. However, post-Eocene sedi¹⁷⁶
123 ments of the range are not well dated and more precise studies¹⁷⁷
124 concerning the timing of inversion of the margin are needed.¹⁷⁸
125 According to geodetic and geological data, between 4 and
126 11mm.yr^{-1} of the present day northward Arabia-Eurasia con¹⁷⁹
127 vergence is accommodated in northeastern Iran (Vernant et al.,¹⁸⁰
128 2004; Reilinger et al., 2006; Shabanian et al., 2009a, e.g.). The¹⁸¹
129 northwestern strike of the convergence involves thrust faulting¹⁸²
130 and minor left lateral strike-slip in the northwestern part of the¹⁸³
131 belt and mainly right-lateral strike-slip faulting in the eastern¹⁸⁴
132 part of the range (Figure 2). This observation is confirmed by¹⁸⁵
133 the earthquakes focal mechanisms that show thrusting to the¹⁸⁶
134 West and strike-slip faulting with some thrusting to the east¹⁸⁷
135 (Figure 2). Furthermore, in the eastern part, recent strike-slip¹⁸⁸
136 faulting across the belt dissected the folds that can be observed¹⁸⁹
137 to the East of Bojnurd city. ¹⁹⁰
138 According to geomorphologic data and datings, Shabanian¹⁹¹
139 et al. (2009b, 2012) inferred that the important lateral motion¹⁹²
140 recorded within the Kopet Dagh belt should not have started¹⁹³
141 before the Early Pliocene (~4 Ma) which corresponds to the¹⁹⁴
142 commonly proposed widespread reorganization of the tectonic¹⁹⁵
143 deformation in the Arabia-Eurasia collision zone (Axen et al.,¹⁹⁶
144 2001; Allen et al., 2004; Copley and Jackson, 2006, e.g.). In¹⁹⁷
145 contrast, Hollingsworth et al. (2008) propose that main strike¹⁹⁸
146 slip motion within the Kopet Dagh could have be initiated ear¹⁹⁹
147 lier, at ~10 Ma, and that the initiation of this lateral motion²⁰⁰
148 could be related to the westward extrusion of the South Caspian²⁰¹
149 Sea Basin relative to Central Iran and Eurasia. ²⁰²
150 Nevertheless, especially in the eastern part of the belt, fold²⁰³
151 axes and strikes of the major tectonics features likely suggest a²⁰⁴
152 SW-NE oriented shortening, that probably reflects the tectonic²⁰⁵
153 settings before the reorganization of the tectonics deformation²⁰⁶
154 across the belt that we considered to have occurred at ~4Ma a²⁰⁷
155 suggested by Shabanian et al. (2009b, 2012). ²⁰⁸
²⁰⁹
²¹⁰
²¹¹
²¹²

156 3. Stratigraphic description ²¹¹

157 We present our sedimentary and biostratigraphic study that²¹³
158 results from widespread and numerous field surveys performed²¹⁴
159 by the NIOC team including 3 common field missions. Before²¹⁵
160 this contribution, the stratigraphy in the Kopet Dagh was essen²¹⁶
161 tially based on facies recognition and correlation that resulted²¹⁷
162 in differentiation of numerous formations, mainly according to²¹⁸
163 lithological criteria. In this study, a widespread biostratigraphic²¹⁹

study of the pelagic facies that have been correlated with pre-
cise lithological descriptions including more than 150 datings
is presented, which allows us to propose a new stratigraphic
chart for the Kopet Dagh and the surroundings basins (Fig-
ure 3). Our biostratigraphy is based on investigation of cal-
careous nannofossils. Age determination of the Mesozoic was
performed from publications of Thierstein (1976) and Perch-
Nielsen (1985) and we used the zonation given by Martini
(1971) for the Cenozoic. Our results have been synthesized in
the stratigraphic chart (Figure 3) and are also presented in Table
1 that indicates location of the main dated samples and names
of the nannofossils.

In this section, we will describe the detailed stratigraphy of the
Kopet Dagh region, from the oldest outcropping rocks to the
Tertiary continental sediments.

3.1. Devonian to Upper Triassic: before the deposition of the Kopet Dagh Basin

The oldest rocks outcropping in the Kopet Dagh fold-and-
thrust belt are Devonian to Lower Carboniferous (Ruttner,
1991; Lyberis et al., 1998) and they are mostly outcropping
within the Aghdarband erosional window and within the
Fariman and Darreh Anjir complexes, in the eastern part of
the belt (Ruttner, 1991). Most of the sediments in the Agh-
darband erosional window are Triassic in age and are strongly
deformed as a consequence of the closure of the Paleotethys
Ocean during the Cimmerian orogeny. Several unconformities
between the different series are observed. The Darreh Anjir
and the Fariman complexes have firstly been interpreted as
ophiolitic remnants of the Paleotethys ocean but they were
recently re-interpreted as remnants of a magmatic arc and
related basins developed at the southern Eurasia margin, on
top of the north-directed Paleotethys subduction zone long
before the collision of Iran with Eurasia (Zanchetta et al., 2013).

The Upper Devonian series are constituted at their base by
dark grey thinly bedded volcanoclastics, shales and turbiditic
sandstones. These series are overlain by dark green volcan-
oclastic sediments, with some limestone layers. The Lower
Carboniferous is characterized by white limestones of about
200 m thickness with the occurrence of some diabase dykes.
A massive Permian sedimentary succession, including sand-
stones, limestones and basaltic to andesitic lava flows has been
described in the Fariman Complex (see location on the figure 6)
(Zanchetta et al., 2013). The ?Upper Permian to Lower Triassic
molassic type rocks are composed of some red quartzitic sand-
stones and siltstones, with intercalated conglomerates that in-
clude pebbles of quartz, pink colored granites, radiolarites and
Carboniferous to Late Permian limestones. These series present
a thickness up to 500 m.

Four members are distinguished in the Triassic series of the
Aghdarband erosional windows by Ruttner (1991): the three
lowermost units that comprise an important volcanic compo-
nent were deposited before the Middle Cimmerian orogeny,
whereas the fourth unit indicates deltaic conditions of deposi-
tion and results from the erosion of the relief formed during the
Cimmerian orogeny. In this study, we are not differentiating the

different stages of the Cimmerian orogeny. The first member (Lower Triassic) is characterized by a re-dish sandstones and conglomerates at its base (Qara Gheithan Formation) that are overlain by limestones layers (Sefid Kuh Formation and Nazarkardeh Formation). The second member (Middle Triassic, base of the Sina Formation) is constituted at its base by a conglomerate overlain by volcanoclastic sandstone and tuffaceous shales in the upper part. It was dated thanks to two fossil horizons with abundant crinoids and ammonites and assigned to Landinian to Lower Carnian in age. The third member (Middle Triassic) is made of tuffaceous sandstones and some shales (top of the Sina Formation). Finally, the last member (Upper Triassic) presents an unconformity at its base and starts with some sandstones without volcanic components and rich in coal layers on top of which there is some shale (Rutner, 1991). These deposits, named the Miankuhi Formation, are dated by plant fragments as Upper Carnian and Lower Norian (Ghasemi-Nejad et al., 2008). The dark shales and fine-grained sandstones of the coal bearing Miankuhi Formation may represent an equivalent to the lower part of the Shemshak Group (Taheri et al., 2009; Wilmsen et al., 2009). The lack of an equivalent to the widespread across the Iran Plate, Upper Triassic/Middle Jurassic Shemshak Group has been interpreted as a consequence of a period of emergence of the Turan area (Lyberis et al., 1998). The Miankuhi Formation is intruded by coarse-crystalline leucogranites (Torbat-e-Jam Granite) that have been dated at 217 +/- 1.7 Ma by (Zanchetta et al., 2013).

3.2. Middle Jurassic: Sedimentation during the rifting following the Cimmerian orogeny (Kashafrud Formation)

Following the closure of the Paleotethys, the so-called Kopet Dagh Basin was deposited from the Middle Jurassic to the Tertiary and it corresponds to the southern border of the Amu Darya Basin. The sedimentation began with deposition of the Middle Jurassic Kashafrud Formation, which rests unconformably on folded Triassic or older rocks (Taheri et al., 2009). The Kashafrud Formation comprises 300 m to more than 2500 m of deep-marine siliciclastic strata (Poursoltani et al., 2007; Taheri et al., 2009). Furthermore, it could be either very thick, or absent above crest blocks or paleohighs. The Middle Jurassic Kashafrud Formation is generally conglomeratic at its base and consists of thick siltstones, sandstones and shales units. Where the whole formation is observed, the base presents more shaley facies and the top of the formation is characterized by shallower conditions of deposition as indicated by channelized sandstones typical of deltaic facies. Our biostratigraphic data indicate an Aalenian to Bajocian age for this formation (Figure 3 and Table 1). This sequence was deposited in a rift system as indicated by the rapid facies and thickness variations (Kavoosi et al., 2009a).

3.3. Upper Jurassic (Chaman Bid and Mozduran formations)

In the western part of the basin, the Kashafrud Formation is overlain by the Upper Bajocian to Tithonian Chaman Bid Formation (Kalantari, 1969), which mostly consists of alternations of grey shales and marly limestones. Main deposition environments of the Chaman Bid Formation are on the slope

of a carbonate platform and in the adjacent basin (Majadifard, 2003). In contrast, towards the East, the Kashafrud Formation is directly overlain by the Upper Jurassic Mozduran Formation (Taheri et al., 2009), which is the main gas reservoir in the Kopet Dagh range (Figure 4). The Mozduran Formation is a well-bedded limestone and its facies varies towards the East to siliciclastic sediments. The thickness of the Mozduran Formation varies from 200 m, to 800 m in the Khangiran gas field and up to over 1400 m in the central part of the belt (Afshar-Harb, 1979). The sharp and sudden lateral lithological and thickness variations of the Mozduran Formation are interpreted as related to the presence of paleohighs within the basin after the Middle Jurassic rifting in the Kopet Dagh Basin (Kavoosi et al., 2009b). The Mozduran Formation is overlain by Cretaceous sediments, which are divided into 10 different formations (Shurijeh, Zard, Tirgan, Sarchashmeh, Sanganeh, Aitamir, Abderaz, Abtalkh, Neyzar and Kalat) and associated with a thickness up to 4000 m thick in the western part of the basin (Afshar-Harb, 1979). Emami et al. (2004) suggested that the Cimmerian tectonic phase resulted in widespread Late Jurassic-Early Cretaceous regression, leading to deposition of the Lower Cretaceous continental siliciclastics and evaporites of the Shurijeh Formation.

3.4. Lower Cretaceous, Neocomian (Shurijeh and Zard formations)

The Lower Cretaceous Shurijeh Formation consists of red-bedded siliciclastic sediments (reservoir rocks) overlain by limestones. The upper part of the Lower Cretaceous Shurijeh Formation consists of gypsum/anhydrite deposits that were deposited under arid conditions as a consequence of the major regression of the sea that occurred in the Jurassic/Cretaceous transition (Moussavi-Harami and Brenner, 1990; Moussavi-Harami et al., 2009). These evaporite levels make the seal for the basal Shurijeh Formation (secondary reservoir for gas in the Kopet Dagh range) and the Mozduran formations. The thickness of the Shurijeh Formation ranges from 100 m above the paleohigh to about 1000 m thick (Afshar-Harb, 1979). Towards the NW, the Shurijeh Formation thickness decreases until being completely replaced by the Zard Formation, which mainly consists of marine marls, calcareous shale with some sandstone beds (Afshar-Harb, 1979). Our biostratigraphic results with the results from Jamali et al. (2011) indicate a Late Tithonian to Hauterivian age for this formation.

3.5. Lower Cretaceous, Aptian-Albian (Tirgan, Sarchashmeh and Sanganeh formations)

The deposition of the continental Shurijeh Formation is followed by shallow marine sedimentation characterized by the deposition of the marls and orbitolinids rich limestone Tirgan Formation with a thickness up to 600 m. The age of these formations is Barremian and the nannofossils are often strongly recrystallized and fragmented. The Sarchashmeh Formation (about 150-250m thick) conformably overlies the calcareous Tirgan Formation and consists of two members: the lowest uniform grey marl unit and the upper layer that consists of an alternance of shale and limestone. These thick marls become richer

in fine grained sandstone layers in the upper part which corresponds to the Sanganeh Formation. From our biostratigraphic study, a Late Barremian to Aptian age is proposed for the Sar-chashmeh Formation and the Sanganeh Formation appears to be Albian in age.

3.6. Upper Cretaceous (Aitamir, Abderaz, Abtalkh and Kalat formations)

The Aitamir Formation is a mudstone that grades upwards to a lower glauconitic sandstone unit with cross-stratifications, hummocky cross-stratifications and ripple marks, to a unit of mudstone intercalated with sandstone beds (Sharafi et al., 2012). This formation corresponds to shallow open-marine environment and its upper surface is delimited by a hiatus and local erosion that is the first main hiatus in the Cretaceous sedimentation recorded in the Kopet Dagh range. This formation is barren of nannofossils which do not allow us to propose an age from biostratigraphy, but it is considered as Late Albian to Cenomanian (Sharafi et al., 2012). Overlying this erosional surface, the Abderaz Formation is mostly made up of calcareous and marly shales (Allameh et al., 2010). Its thickness ranges between 200 and 400 m to the East of the Kopet Dagh and decreases towards the western part of the belt (Afshar-Harb, 1979). From our biostratigraphy study, a Late Santonian age was determined for the Abderaz Formation but the nannofossils are often strongly recrystallized and broken within the marl intercalations.

The Abtalkh Formation (Campanian) is well developed in the eastern Kopet Dagh and has an almost uniform lithology consisting of calcareous shales with some lumachelle rich limestone beds near the top and with locally some small rudist-patch reefs. It presents a constant thickness of 700-800 m (Afshar-Harb, 1979). In the western part of the belt, the Abtalkh Formation is not developed and the Abderaz Formation is directly overlain by the Kalat Formation. In contrast, to the East of the belt, the upper part of the Abtalkh Formation is characterized by a progressive transition to the Neyzar Formation which is mostly composed of glauconite and clays with some sandstone in the upper levels indicating a shallow marine condition of sedimentation. The transition between the Neyzar Formation to the Kalat transition is progressive (Shahidi, 2008). The Kalat Formation is a widespread unit in the whole Kopet Dagh region and consists of a bioclastic limestone and carbonate build-ups with subordinate sandstone beds observed only in the eastern part of the region (Afshar-Harb, 1979). This formation has been recently dated as Upper Campanian to Maastrichtian (Shahidi, 2008) and our biostratigraphic results indicate a Campanian age. The Kalat Formation consists of marls partly rich in gas-tropods and recifal limestones with rudists or algae, must have been deposited in a shallow shelf environment with a connection with the open sea (Afshar-Harb, 1979). The upper part of the Kalat Formation is marked by an erosional surface that is associated with the second general hiatus of sedimentation in the region.

3.7. Paleogene (Pestehleigh, Chehel Kaman and Khangiran formations)

The transition between the Upper Campanian and the Paleocene is characterized by an increase of fine grained sandstones. The Paleocene Pestehleigh Formation is predominantly represented by red continental series with sand and siltstones with some conglomeratic levels at its base. It is followed by fluviodeltaic and continental red sandstones and siltstones. Some marine incursions have been observed and dated within zone NP2 in the lowermost part and within zone NP5 upwards in the section. The uppermost Paleocene (zone NP9) was determined in the Chehel Kaman Formation that consists of white carbonates. The transition to the Lower Eocene is characterized by the occurrence of some layers of marls. The Eocene (zones NP12-NP19) is represented by alternating limestones and marls and it becomes sandier within the upper part.

3.8. Oligocene-Neogene

On geological maps, the youngest sediments represented are indicated as Neogene in age. However, there is no published study about precise dating of these continental series or neither about the deformation affecting these series. In this article, we decided to name this formation as Oligocene-Neogene sediments. Most outcrops of the Oligocene-Neogene conglomerates and sandstones are represented as strongly discordant. Deposition of these sediments is associated with the late reactivation of the fold belt.

3.9. Conclusions from the stratigraphic study

Our stratigraphic descriptions, synthesis and new biostratigraphic data can be summarized as follows:

1. There is a stratigraphic gap between the Lower Carboniferous and the thick Permo-Triassic molassic type series that are in tectonic contact. This contact might be related to the Late Paleozoic active margin activity at the southern Eurasia margin (Zanchetta et al., 2013).
2. Some authors argue about several tectonic phases in the Cimmerian orogeny (Eo-cimmerian and Middle Cimmerian orogenies), but because this article is focused on the post-Cimmerian history, we will not distinguish these different phases and, instead, use the term of Cimmerian orogeny.
3. The major unconformity observed within the range corresponds to the base of the Kashafrud Formation (Middle Jurassic) which corresponds to the first deposited sediments after the Cimmerian orogeny. Then, this unconformity corresponds to a post-orogenic unconformity but also to a rift-onset unconformity.
4. A rifting episode occurred in the Kopet Dagh region during the Middle Jurassic. At this time, the southern part of the Amu Darya Basin was probably linked with the South Caspian Sea Basin (Brunet et al., 2003). The abrupt facies and thickness changes of the Kopet Dagh Basin fill are inferred to mark activation of several major extensional faults during deposition of the Middle Jurassic Kashafrud Formation (Lyberis and Manby, 1999; Thomas et al., 1999).

437 5. During the Cretaceous and the Paleogene, several hiatus⁴⁹⁰
 438 are interpreted as periods of uplift and erosion and the⁴⁹¹
 439 role of tectonics during these periods could be questioned.⁴⁹²
 440 These emergent periods are indicated as local uplifts in⁴⁹³
 441 our stratigraphic chart (Figure 3). These hiatus have pre-⁴⁹⁴
 442 viously been interpreted a consequence of distal responses⁴⁹⁵
 443 to collisional events (Berberian, 1983; Lyberis and Manby,⁴⁹⁶
 444 1999). There is no evidence of post-Middle Jurassic rifting⁴⁹⁷
 445 as previously suggested by Lyberis and Manby (1999).⁴⁹⁸

446 6. Finally, the late reactivation of the belt is not well dated,⁴⁹⁹
 447 but occurred after the deposition of the marls of the Eocene⁵⁰⁰
 448 Khangiran Formation. The occurrence of continental sed-⁵⁰¹
 449 imentation is related to the structural inversion that oc-⁵⁰²
 450 curred after the Eocene as a consequence of the relative⁵⁰³
 451 motion between the Iran Plate and the Eurasian Plate. This⁵⁰⁴
 452 inversion resulted in widespread folding and thrusting of⁵⁰⁵
 453 Jurassic to Tertiary sediments (Lyberis and Manby, 1999;⁵⁰⁶
 454 Allen et al., 2003). This collision led to crustal shorten-⁵⁰⁷
 455 ing and right-lateral transpression which is still continu-⁵⁰⁸
 456 ing as indicated by seismic activity (Thomas et al., 1999;⁵⁰⁹
 457 Golonka, 2004) and active faulting (Hollingsworth et al.,⁵¹⁰
 458 2006, 2008, 2010; Shabanian et al., 2009a,b, 2012). Nev-⁵¹¹
 459 ertheless, the margin inversion is not well dated, because⁵¹²
 460 of the lack of information of the precise timing of deposi-⁵¹³
 461 tion of the post-Eocene sediments that are not widely out-⁵¹⁴
 462 cropping in the range.⁵¹⁵

463 Our new stratigraphic results have been integrated in a detailed⁵¹⁷
 464 structural study of the belt focused on 4 main regional cross-⁵¹⁸
 465 sections. The next section presents the detailed and widespread⁵¹⁹
 466 structural study that we carried out across the Kopet Dagh⁵²⁰
 467 range.⁵²¹

468 **4. Geological cross-sections and structure of the Kopet** 469 **Dagh range**⁵²⁴

470 This part describes the main structures of the Kopet Dagh⁵²⁷
 471 based on the simplified geological map (Figure 5) and on 4⁵²⁸
 472 regional cross-sections across the belt (Figures 6, 11, 13 and⁵²⁹
 473 15). These cross-sections result from numerous field survey⁵³⁰
 474 and our structural interpretation locally supported by 2D and⁵³¹
 475 3D seismic lines (see location of the presented seismic lines⁵³²
 476 in Figure 5). Our field work was limited to the Iranian part⁵³³
 477 of the range, which explains that the coverage of our data for⁵³⁴
 478 the frontal part of the belt are restricted to seismic data (part⁵³⁵
 479 that connect with the South Caspian Sea region to the West and⁵³⁶
 480 within the Amu Darya Basin to the NE). In the eastern part,⁵³⁷
 481 the structural style of the front of the range has been defined⁵³⁸
 482 using borehole data plus 2D and 3D seismic sections. Towards⁵³⁹
 483 the South Caspian Sea Basin, folded structures are buried by the⁵⁴⁰
 484 thick Oligocene to Quaternary sediments and numerous seismic
 485 lines are available in this transitional zone, above the Gorgan⁵⁴¹
 486 Plain. Two of our cross-sections (Figures 6 and 11) illustrate⁵⁴²
 487 the links between the Kopet Dagh and the Amu Darya Basin,⁵⁴³
 488 whereas the 2 others (Figures 13 and 15) are focused on the⁵⁴⁴
 489 links between the Kopet Dagh and the South Caspian Sea Basin.⁵⁴⁵

Pre-Cimmerian sediments outcrop in the Aghdarband ero-
 sional window and in some locations in the inner part of the
 belt. They have not yet been described in Afghanistan or in
 Turkmenistan. Then, there is only little and local information
 about the tectonic history before the Cimmerian orogeny within
 the Kopet Dagh. Furthermore, folds axes within the Upper De-
 vonian to Lower Carboniferous strata are co-axial with the folds
 axes observed within Triassic rocks which causes difficulties
 to unravel tectonic effects resulting from the Variscan orogeny
 than the one resulting from the Cimmerian orogeny. In this ar-
 ticle, we will focus on the post-Cimmerian structural evolution
 of the fold-and-thrust belt. Following the Cimmerian orogeny,
 an extensional regime affected the southern Amu Darya Basin
 during the Middle Jurassic. From the Middle Jurassic to the
 Tertiary, over 7 km of sedimentary rocks were accumulated
 (Afshar-Harb, 1979) and they unconformably overlay Paleozoic
 and Triassic rocks (Ulmishek, 2004).

The thick sedimentary sequence is deformed as large-scale
 folds. The main crests of the Kopet Dagh range correspond to
 the fold axial regions of large anticlines mostly developed in the
 Lower Cretaceous limestones (Tirgan Formation). In contrast,
 most of the valleys are located in the core of synclines occupied
 by less competent rocks. There is few Tertiary sediments out-
 cropping in the range, some of them are folded and outcrop in
 the center of large synclines, whereas some Oligocene-Neogene
 conglomerates are clearly discordant (Figure 5).

In the eastern part of the belt, the observed deformation is char-
 acterized by oblique Middle Jurassic graben inversion with evi-
 dences of forced-folding and few short-cuts, and as well by
 larger scale structures involving basement. The large-scale
 structures present long axis those are parallel to the Main Kopet
 Dagh Fault. From seismic sections, several décollement levels
 within the Mesozoic sequence explain numerous disharmonies,
 fish-tail structures in the core of the folds or triangle zones (Fig-
 ures 8 and 12). The orientation of the Main Kopet Dagh Fault
 is interpreted as associated with the reactivation of old Paleozoic
 structures (Amurskiy, 1971; Maggi et al., 2000). Similar
 striking Paleozoic structures are observed both within the Agh-
 darband Erosional window (Zanchi et al., 2009; Zanchetta et al.,
 2013) and to the northeastern part of the Amu Darya Basin. In-
 deed, the Variscan orogeny shaped structural features trending
 roughly WNW-ESE inside the epi-variscan Turan Platform as
 the Kyzylkum high, which marks the northeastern border of the
 Amu Darya Basin. The orientation of the observed structures in
 the northern and eastern part of the belt is directly related to the
 Alpine reactivation of these Paleozoic basement structures. In
 contrast, in the northwestern part, the belt presents an arcuate
 shape that is parallel to the Paleotethys suture zone (Figure 1b).
 In this part, the observed structures are thrust faults involving
 basement and fault-propagation folds within the sedimentary
 sequence.

4.1. *The eastern cross-section (Aghdarband-Gonbadly sec- tion)*

The eastern cross-section is a 140 km long N-S geological
 cross-section extending from the Aghdarband erosional win-
 dow to the wide anticline of the Khangiran gas field (Figure

6, see location on Figure 5). This cross-section was built using our own field observations (Figure 7) and seismic lines including 3D seismic data and borehole data (Figures 8, 9 and 10). The Gonbadli and Khangiran gas fields are located in the Iranian part of the Amu Darya Basin and they extend to the Turkmen gas fields. This cross-section will be described from the South to the North.

4.1.1. To the South of the Aghdarband erosional window

The southern boundary of the cross-section corresponds to the prolongation of the Fariman Complex, interpreted as remnants of an intra-arc or incipient back-arc basin (Zanchetta et al., 2013). The Middle Jurassic Kashafrud Formation with evidences of syn-rift normal faulting outcrops to the North of this ophiolitic complex. The occurrence of graben inversion and few short-cuts within the Middle Jurassic Kashafrud Formation are highlighted in this part of the cross-section. Towards the North, within the Kol Malek syncline, Mesozoic sediments are thinner compared to the sediments belonging to the Amu Darya Basin and they are conformably overlain by Cenozoic sediments. The Kol Malek syncline is pinched and its northern flank is overthrust by rocks belonging to the Darreh Anjir ophiolitic complex.

4.1.2. The Aghdarband erosional window

The basement of the South Amu Darya Basin is observed within the Aghdarband erosional window. This basement consists of sedimentary, metamorphic and igneous rocks with ages ranging from Devonian to Triassic and mostly corresponds to preserved fragments of a continental arc (Baud and Stampfli, 1989; Poursoltani et al., 2007). The erosional window corresponds to faulted and folded strata that are preserved below double verging thrusts (Figure 7) and we interpret it as a paleo-horst structure.

To the South of the window, the Darreh Anjir complex, consisting of gabbros and low metamorphosed basalts, cherts and marbles (Zanchetta et al., 2013) is thrust on top of the northern flank of the Kol Malek syncline. The southern boundary of the complex is given by a south verging thrust which stacks the mostly mafic rocks of the Darreh Anjir complex on the Upper Triassic Miankuhi Formation. This mafic rocks of the Darreh Anjir complex overthrust to the North the volcanic complex, which is overthrust to the South by the thick succession of Upper Permian-Lower Triassic molassic-type sediments (Figure 7) (Zanchetta et al., 2013). Previous interpretations suggest that the Darreh Anjir complex corresponds to Paleotethys remnants (Ruttner, 1991; Alavi et al., 1997). However, a recent study suggests that this complex including both intrusive and lava flows is, thus, remnants of a magmatic arc and related basins developed on the southern Eurasia margin, to the NE of the Paleotethys suture zone (Zanchetta et al., 2013). The Paleozoic and Lower Mesozoic sediments deformed within the Aghdarband window derived from the erosion of the Variscan orogen (Ruttner, 1991). The faults that are affecting these sediments are laterally embedded by the Middle Jurassic Kashafrud Formation, which suggests a Cimmerian age for these faults.

To the North, the low metamorphosed molassic succession overthrusts Triassic units that are forming a large south-verging syncline marked in its central part by a narrow anticline. The northern flank of the large syncline is bounded by another double-verging syncline presenting secondary order folds in its core. Its northern boundary is marked by several narrow strips of steeply inclined Triassic rocks that are interpreted as due to a flower structure related to a vertical Cimmerian fault striking WNW-ESE with dextral strike-slip component (Zanchi et al., 2010). The fold axes observed in Devonian and Carboniferous sediments are coaxial with the ones observed within the Triassic, which does not allow easily distinguishing the deformation associated with the Cimmerian orogeny from the one due to older orogeny. To the North of the Aghdarband erosional window, the Middle Jurassic Kashafrud Formation overlay unconformably the Devonian strata.

4.1.3. To the North of the Aghdarband window

Seismic data suggest a triangle (or fish-tail) structure (Figure 8). The older than Campanian series are force-folded and thrust to the NE, whereas the younger series form a wide monocline towards the NE, which is a consequence of a triangle zone associated with disharmony and back-shearing within Late Cretaceous marls.

Towards the NE, the Mesozoic and Cenozoic series of the South Amu Darya Basin are imaged on the 2D and 3D seismic lines available in the Gonbadli and Khangiran gas fields area (Figures 9 and 10). Late Jurassic to Late Eocene series slightly thick away from the Aghdarband erosional window, which suggests that the region formed a persistent paleorelief during the deposition of the South Amu Darya Basin.

The seismic sections (Figure 9) supported with field evidences indicate that the Middle Jurassic Kashafrud Formation was deposited in a rift system. There are important lateral variations in thickness of the Kashafrud Formation from no deposition on the crests of the blocks to several kilometers thick in the hanging wall of the normal faults. Forced folding as a consequence of the inversion of a major Middle Jurassic rift faults system is observed on seismic sections (Figure 10). Some Tertiary echelon faults can be observed on the 3D seismic block on the top of the basement uplift shown in Figure 9a, indicating a dextral component during the Tertiary inversion along the WNW-ESE trending structures.

Some carbonate build-up and progradations within the Upper Jurassic carbonatic sequence are observed on seismic sections (Figure 10) and on the field (Figure 4b)).

4.1.4. Summary of the Aghdarband-Gonbadly cross-section

The Aghdarband-Gonbadly cross-section shows a major basement inversion that affects the southern border of the Amu Darya Basin. A progressive thinning of the Jurassic and Cretaceous series of the basin towards the NE, as well as the occurrence of more pelagic facies to the North and more continental facies towards the Aghdarband erosional window, suggest that the region of the erosional window formed probably a horst during the Middle Jurassic, and a persistent paleorelief

655 during the deposition of the younger series of the basin. De-709
656 position of the Middle Jurassic Kashafud Formation occurred-710
657 during active rifting as highlighted by numerous normal offsets-711
658 shifting the base of this formation. Locally, the rift system has-712
659 been inverted as suggested by the observation of forced-folding-713
660 within the Upper series, which is attributed to the Tertiary inver-714
661 sion of the range. This late tectonic inversion is associated with-715
662 an important strike-slip component, and with the development-716
663 of growth strata within the Tertiary sediments. There is little-717
664 information in the Turkmen part of this cross-section but sev-718
665 eral gas fields are producing from the clastic series of the Early-719
666 Cretaceous Shurijeh Formation or from the reefal carbonates
667 of the Late Jurassic Mozduran Formation capped by the Late-720
668 Jurassic-Early Cretaceous evaporites and salt layers within the
669 Amu Darya Basin. 721

670 4.2. Darre Gaz cross-section 722

671 The 160 km-long DarreGaz cross-section is cutting through-725
672 the Darre Gaz syncline where the Tertiary series are the thick-726
673 est observed within the range (Figure 11). This cross-section-727
674 highlights the front of the Kopet Dagh and it is passing through-728
675 the area where there are numerous recent strike-slip faults that-729
676 cross-cut the structures. Along this cross-section, the sedimen-730
677 tary series are thicker than along the Aghdarband-Gonbadly-731
678 cross-section and presents uplifted deeper facies. Thicknesses-732
679 of the formations were estimated according to field observa-733
680 tions, seismic data and satellite imaging, because of the lack of-734
681 borehole data. As for the eastern cross-section, the basement
682 is also implied in the deformation and several décollement lev-735
683 els within the Mesozoic series are observed. This cross-section-736
684 will be described from the SW to the NE. 737

685 4.2.1. Description of the Darre Gaz cross-section 738

686 In the southwestern part of the cross-section, the folded struc-740
687 tures present a wavelength of about 12 km and they are cut by-741
688 several strike-slip faults. We infer that the folding of the se-742
689 ries could be associated with the inversion of Middle Jurassic-743
690 half-grabens. The strike-slip faults affect the discordant Tertiary-744
691 series and are associated with the most recent tectonic phase. 745
692 The seismic section on Figure 12 highlights an important-746
693 disharmony between deep and surface structures, with several-747
694 décollements levels within the thick Cretaceous series. Main-748
695 décollement levels are located within the Kashafud Formation-749
696 within the evaporitic levels of the Suriyeh Formation and within-750
697 the thick marly Sarchashmeh and Sanganeh formations. Some-751
698 structures are outcropping laterally, such as the narrow reverse-752
699 fold affecting the Barremian limestones of the Tirgan Forma-753
700 tion. Finally, the northeastern part of the cross-section corre-754
701 sponds to the Zarrineh Kuh anticline. Seismic data (Figure 12)-755
702 show 2 anticlines: (1) the shallower anticline that affects Cre-756
703 taceous and Paleocene levels and that is narrower than (2) the-757
704 deeper one, in which the Jurassic series are affected by larger-758
705 wavelength forced-folding. There are no seismic data along the-759
706 section crossing the Zarrineh Kuh anticline but, seismic profiles-760
707 of its southwestern flank highlight the important disharmony-761
708 between shallow and deep structures. 762

4.2.2. Summary of the Darre Gaz cross-section

The Darre Gaz cross-section highlights the importance of forced-folding affecting the basement and overlain by shorter wavelength folds detached along several décollement levels. Surrounding seismic sections show that the décollement level of the frontal fold is located within the Lower Cretaceous, probably within the evaporitic levels. This cross-section attests of the important partitioning of the recent deformation across the belt: thrusts are located in the frontal part of the range as highlighted by compressional focal mechanisms whereas mostly strike-slip deformation is now affecting the internal parts of the range.

4.3. Western Kopet Dagh cross-section

This 90 km-long regional cross-section (Figure 13) cuts across the western branch of the Kopet Dagh range, from the internal zone until the South Caspian Sea Basin. It is a dog-leg type cross-section based on available outcrops and it presents typical structures and unconformities characterizing this area. At large scale, this section shows the uplift and erosion of the inner part of the Kopet Dagh as a consequence of several periods of uplift and/or folding. The southwestern part of this section corresponds to the inner part of the belt, where several basement thrusts are observed and where Paleozoic and Mesozoic formations outcrops at several locations. In this area, the folds of the western part of the Kopet Dagh are oriented SW-NE (Figure 5) and plunge to the SW in the Gorgan Plain below the sediments of the South Caspian Sea Basin.

4.3.1. Description of the western Kopet Dagh cross-section

We will describe this cross-section from the internal zone, close to the Late Triassic/Early Jurassic Paleotethys suture zone towards the Gorgan Plain corresponding to the eastern prolongation of the South Caspian Sea Basin. The large wavelength structures present a SE vergence until Balkor syncline (Figure 13). In contrast, the structures that plunge beneath the Gorgan Plain present an opposite NW vergence. The southeastern part of the cross-section corresponds to a large SE-verging anticline (Figure 13) formed by the series from Paleozoic to Eocene in age. On top of the Paleozoic, Triassic series are outcropping and unconformably overlain by a conglomeratic level corresponding to the base of the Middle Jurassic Kashafud Formation. The Kashafud Formation presents a fan geometry and its thickness is locally up to 2500 m in the deeper parts of this rift structure (Figure 14). The Middle Jurassic Kashafud Formation overlays lower series (Paleozoic or Triassic series) and is unconformably covered by the marls of the Upper Jurassic Chaman Bid Formation that could locally directly overly the Triassic strata. This erosion on top of the Kashafud Formation was also observed on some seismic lines in the eastern part of the Kopet Dagh (Kavoosi et al., 2009b). Above a thin marly and clastic level, the Lower Cretaceous Tirgan limestone reaches around 450 m of thickness. On the top of the Tirgan Formation, there are numerous sedimentation lacunas and it is locally covered by the very thin Sarchashmeh Formation or by the Abderaz Formation. The whole Upper Cretaceous series do not reach 400

m of thickness and they are overlain by the reddish series of the Paleocene. There is an important thinning of the Mesozoic series and in particular of the Lower Cretaceous with an important lacuna of deposition from the Aptian to the Turonian that has only been observed in the western Kopet Dag. Large out-of-sequence thrusts that affect the whole stratigraphic sequence are observed (Figure 14). They are obliquely cutting the previous structures such as the Kashafrud rift, which suggests that they are newly-formed and do not correspond to inversion of the rift faults. The Tirgan Formation is folded and faulted with a short wavelength, which suggests the occurrence of local décollement levels within the underlying Chaman Bid Formation. The series is continuing towards the West (Figure 14) with the occurrence of folds with Kashafrud and Mozduran formations in the core that are cross-cut by the newly-formed S-verging thrusts. To the North, within the northern flank of the Bash Kalateh anticline, the Lower Cretaceous series (1300 m thick) are outcropping, whereas they were absent in the Nabiya syncline. Conglomerates (~40 m thick) are characterized an erosion level on the top of the Aitamir Formation and they are overlain by the white limestones of the Abderaz Formation that are the only sediments from the Upper Cretaceous. The marine marls of the Eocene directly overlie the Upper Cretaceous. The entire series is concordant and presents a constant dipping whereas the Oligocene-Neogene conglomerate is subhorizontal. Toward the NW, a narrow S-verging anticline with a core made of Upper Jurassic sediments. The Lower Cretaceous series thickens and is unconformably overlain by sediments from the Upper Cretaceous Kalat Formation to the Eocene Khangiran Formation. NW verging large anticlines and synclines are observed, as well as an important thickening of the Lower Cretaceous series that is related to a higher initial thickness and to the occurrence of thrusting within this formation. In contrast, there is a lack of most of the Upper Cretaceous in the last syncline (Rud Atkak syncline) that has a core made of Paleocene sediments. At the western end of the section, some seismic lines illustrate that the folds of the Kopet Dag are plunging laterally below the Gorgan plain sediments (Figure 1). Along the section, an important angular unconformity between the folded Aitamir Formation and the Oligocene-Neogene conglomerates is observed. We have already observed the folded Eocene sediments that have been eroded before the deposition of a sub-horizontal Oligocene-Neogene conglomerate. The seismic sections show buried anticlines and the post-Eocene unconformity, which is affected by some recent thrust faults. A drill was done in this region, but due to numerous thrusts and repetitions, it did not reach the Lower Cretaceous Tirgan carbonates.

4.3.2. Summary of the western Kopet Dag cross-section

This cross-section is characterized by important lateral variations of the formations thicknesses as a consequence of either several unconformity or lateral sediment thickness variations inherited from the deposition of the series. There is a lacuna in the Lower Cretaceous to the East and in the Upper Cretaceous to the West. There are also facies variations and thickening of the Lower Cretaceous toward the West. The unconformity at the

base of the Lower Cretaceous (Kalat Formation) is truncated by the post-Eocene unconformity. These several erosional surfaces are associated with stratigraphic lacunas are observed from the Lower Cretaceous to the Eocene, but they are not associated with angular unconformities, in contrast to the major angular unconformity characterizing the base of the post-Eocene series. The entire series until the Late Eocene is folded within double-verging structures. Newly-formed thrusts cross-cut the previous structures of the Kashafrud graben.

4.4. Gorgan Plain cross-section: from the Eastern Caspian Sea margin to the Gorgan Plain

This part presents the westernmost Kopet Dag cross-section that is linked with the eastern part of the South Caspian Sea Basin above the Gorgan Plain (Figure 15). The Gorgan Plain is the southern prolongation of a larger delta that outcrops in Turkmenistan, along the Caspian Sea. Numerous wells and discoveries were made in this region where the fields present an arcuate shape along the coast (Figure 1b) and produce into the Lower and Middle Pliocene clastic series. In this region, the folds are oriented SWS-ENE, but they are masked by the Quaternary sediments that outcrop in the Gorgan Plain in Iran. Discovery of gas and condensates was made in one of this buried folded structure, within the Lower Cretaceous carbonates of the Tirgan Formation.

4.4.1. Description of the Gorgan Plain cross-section

According to borehole data and similarly to the western Kopet Dag cross-section, the Gorgan Plain cross-section shows an important angular unconformity between folded and transgressive series that are consequent to the important Tertiary subsidence in the South Caspian Sea Basin. The folds affecting the Upper Cretaceous series present an asymmetry towards the NW and they prolong the folded structures belonging to the Kopet Dag range (Figure 15) as attested by borehole data and seismic sections (Figures 16 and 17).

Above the unconformity, progressive onlap of the series characterizes the border of the South Caspian Sea Basin. However, these series as well as the unconformity are locally slightly folded as a consequence of the late Alpine phase.

Figure 17 presents a composite seismic section close to the Caspian Sea coast and shows the prolongation of the folded structures underneath the unconformity, which is affected by local reactivation. Above the unconformity, the clastic series thickens greatly towards the South Caspian Sea as a consequence of several transgressive episodes. Regional correlations enable to propose that the yellow horizon nearly corresponds to the top-Miocene. Between the yellow horizon and the unconformity, normal faults sitted on top of a disharmony are observed, highlighting a shale ridge structure (indicated with the (M?) on the Figure 17). The clay series of the Oligocene Maykop Formation of the South Caspian Sea Basin are often responsible of the development of shale ridges type structures, which suggests an Oligocene age for the series sitting on top of the unconformity.

4.4.2. Summary of the Gorgan Plain cross-section

This cross-section shows the relationship between the Kopet Dagh affinity folds uplifted and eroded after the Eocene marine transgression. The trend of the buried folds is SSE-NNW, which is parallel to the structures of the western part of the Kopet Dagh range. The processes involved for the onset of the rapid Oligocene until recent times subsidence is still debated but several authors proposed a syn-compressional downward buckling of the basin resistant basement (Korotaev et al., 1999) and/or the onset of the subduction below the Apsheron ridge (Allen et al., 2003). Progressive onlap above the unconformity in the Gorgan Plain are observed within the Oligo-Miocene clastic sediments. The trend of the Maykop ridge along the coast of the Turkmenistan suggests an Oligo-Miocene paleodelta of the Amu Darya river in that region. This proto-delta shifts to the N during the Pliocene, possibly as a consequence to the rapid uplift within the Kopet Dagh and Alborz ranges at that time.

5. Discussions on the geodynamic evolution

Based on our new stratigraphic and structural data correlated with already published data, we decipher the geodynamic evolution of the Kopet Dagh range and its relationships with the adjacent Amu Darya and South Caspian Sea basins (Figures 18 and 19).

5.1. Late Triassic to Early Jurassic

The collision between Central Iran and Eurasian plates (Cimmerian orogeny) follows the northward subduction of the Paleotethys Ocean and occurred during the latest Triassic/Early Jurassic (Zanchetta et al., 2013) (Figure 18a). The trend of the main structures of the northwestern and eastern parts of the Kopet Dagh follows the arcuate shape of the Paleotethys suture zone, which emphasizes the importance of the structural inheritance in the present-day structure of the belt. Furthermore, some authors suggest an important oblique component of the convergence from a detailed structural study on transpressional structures within the Aghdarband window (Zanchi et al., 2010). They infer the reactivation of some Paleozoic structures as major strike-slip faults during the Cimmerian orogeny. Those linear structures are observed North of the Amu Darya Basin (Mangyshlak and Ustyurt ridges) and within the Kopet Dagh (Main Kopet Dagh Fault) and they have been recently reactivated too (Ulmishek, 2001). From a petroleum point of view, the coal beds of the Upper Triassic sequence (Miankuhi Formation) could be a potential source rock but this formation was deposited within the narrow Aghdarband back-arc basin (Zanchetta et al., 2013) and it is hard to infer its present extension.

5.2. Middle Jurassic

After the Cimmerian collision (Figure 18b), a rifting phase took place across the studied area with the deposition of the clastic Middle Jurassic Kashafrud Formation. Seismic sections

show that the Middle Jurassic Kashafrud Formation was deposited in a rift system, as suggested by the lack or near lack of this formation above pre-Jurassic basement highs in opposition within the hanging wall of the normal faults where this formation reaches several thousand meters thick. Furthermore, evidences of preserved Middle Jurassic normal faulting have been observed at several places in the field. The top of the Middle Jurassic Kashafrud Formation is marked by an important erosional surface and locally by an angular unconformity with the overlying series.

This Middle Jurassic rift system in the Kopet Dagh region has been coeval with the South Caspian Sea rifting event (Brunet et al., 2003; Saintot et al., 2006). From a petroleum point of view, the Kashafrud Formation is considered as one of the main source rocks of the Amu Darya Basin, but forms a bad reservoir, because of early diagenesis (Poursoltani and Gibling, 2011). This rifting phase at Middle Jurassic times has also been observed along the Black Sea, the Kura and the South Caspian Sea (Brunet et al., 2003, e.g.). This phase is commonly interpreted as a consequence of back-arc development due to the subduction of the Neotethys Ocean. According to our observations in the Kopet Dagh, we also propose that the collapse of the Cimmerian orogenic system could have played an important role in this rifting phase.

5.3. Late Jurassic / Early Cretaceous

The Upper-Jurassic to Early Cretaceous series observed in the Kopet Dagh range also belong to the southern part of the Amu Darya Basin (Figure 18c). We infer the occurrence of gentle paleohighs in the eastern part of the Kopet Dagh to explain variations in facies and thickness of the series from the Upper Jurassic to the Lower Cretaceous. For example, to the North of the Aghdarband erosional windows, Upper Jurassic Mozduran limestone is reduced to few meters and there are no salt or evaporites above, in contrast to the observations made in the Amu Darya Basin.

From a petroleum point of view, the carbonates of the Mozduran Formation as well as the clastics of the Shurijeh Formation are the main reservoirs of the Amu Darya Basin. Towards the South, in the Kopet Dagh, there is no salt on top of the Jurassic calcareous and the Upper Jurassic to Lower Cretaceous series are thinner and more clastic.

5.4. Late Cretaceous / Eocene

In the northern and western parts of the Kopet Dagh range, several local erosional levels are observed (Figure 3). For example, a large hiatus from the late Barremian to the Santonian, as well as important thickness and facies variations are observed on the western cross-section (Figure 13). Furthermore, the uppermost Cretaceous (Maastrichtian) is correlated with a stratigraphic hiatus, which is generalized in the whole Kopet Dagh region. Furthermore, an angular unconformity has been evidenced at the base of the Upper Cretaceous series in the western Alborz, suggesting the presence of persisting emerged land (Berra et al., 2007). Our results suggest several local tectonic uplifts in the southern part of the Amu Darya Basin during

the Late Cretaceous, that are not associated with an angular unconformity (Figure 18d). The Paleocene series present important facies variations from red continental series to carbonates across the belt whereas the Eocene Khangiran Formation marks the last marine episode recorded in the Amu Darya Basin and it does not present important thickness or facies variations. Some authors report evidences for a Late Cretaceous-Paleocene compression event in northern Iran (Barrier and Vrielynck, 2008) but this event is not well described at the moment. Notwithstanding, exhumation of the blue schist facies rocks within the Zagros belt and the exhumation of high-pressure rocks in the Sistan are broadly coincident with the obduction process of the Neotethyan lithosphere onto Arabia (Agard et al., 2011; Bröcker et al., 2013). Agard et al. (2011) propose that these exhumation phases could be the result of a regional-scale modification of plate-slab coupling in the Neotethys subduction zone during Late Cretaceous time. Further investigations in northern Iran are needed to better describe these compressive events.

5.5. Late Eocene / Early Oligocene: onset of the Alpine orogeny

The main inversion phase recorder in the Kopet Dagh occurred during the Late Eocene, which is when the Neotethys locked and when the far-field deformation developed in both Eurasian and African plates (Frizon de Lamotte et al., 2011). The thick-skinned folding and related uplift of the Kopet Dagh may be related to reactivation of former Paleozoic or Cimmerian fault systems (Figure 19a), which is suggested by the linear front of the Eastern and Central Kopet Dagh. During the main Alpine compressive phase, folding style and structures vary laterally as a function of pre-existing structures, rock behavior and mechanical stratigraphy (Figure 19a). In the southeastern part of the Kopet Dagh, the Paleotethys suture zone and the inherited Paleozoic trend of the Main Kopet Dagh Fault are parallel. These pre-existing structures probably control both the location of the Alpine Kopet Dagh uplift and folding and the basement-involved tectonic style we observed. Some local inversions of Middle Jurassic graben were also highlighted even though evidences of force folding within the Upper Jurassic to Lower Cretaceous (Barremian) series have been shown too. On top of the Barremian series, several décollements located within the thick Aptian-Albian marls lead to the formation of the triangle zone. Quite similar structures have already been described in Venezuela Andes (Colletta et al., 1997; Duerto et al., 2006, e.g.), in the frontal part of Longmen Shan range (Robert et al., 2010, e.g.) or in the Zagros (Sherkati et al., 2005, 2006, e.g.). Towards the West, the structures are dominated by the resistance contrast between the rigid block formed by the basement of the South Caspian Sea Basin and the weaker western part of the Kopet Dagh range that has been previously deformed by the Cimmerian orogeny. Indeed, this deformation contrast results in the indentation of the rigid South Caspian Sea region during the Alpine compression (Allen et al., 2003). The deformation style is characterized by the double vergence of deep-seated thrusts faults (Figure 8) and important disharmonies within the

Mesozoic levels. Fish-tail type structures with décollement levels within Jurassic or Cretaceous shale levels are suggested. In this part, there is not much evidence of reactivation of the normal faults associated to the Middle Jurassic rifting faults and numerous short-cuts have been observed.

Marine sediments up to the Late Eocene are folded with the underlying formation during the Alpine phase. Eocene sediments are clipped inside the synclines and are unconformably covered by post-Eocene series. Within the Kopet Dagh range, most of the Oligocene-Neogene series are discordant, but growth strata within the Oligocene-Neogene series were observed in the southeastern part of the belt. Further datings of these series are needed, but a Late Eocene-Early Oligocene age for onset of the Alpine orogeny within the Kopet Dagh belt can be proposed.

5.6. Oligocene to Mid-Pliocene: Important subsidence in the South Caspian Sea Basin

The rapid subsidence of the South Caspian Sea starts just after the Late Eocene-Early Oligocene compression folding that is responsible for the main uplift phase within the Kopet Dagh and the Alborz mountains (Allen et al., 2003; Brunet et al., 2003). Most of the authors agree that the basement of the South Caspian Sea is an oceanic crust resulting from the opening of a back-arc basin north of the Neotethyan arc (Brunet et al., 2003). According to Allen et al. (2003), the South Caspian Sea basement corresponds to a resistant block with almost no internal deformation, playing an indenter role, which could explain the arcuate shape of the surrounding fold-and-thrusts belts (Alborz, Kopet Dagh, and Talysh). The important thickness of the Caspian series is sealing the previously described structures in the western Kopet Dagh. Progressive onlap of these Oligocene and Miocene series on top of the unconformity is observed on seismic sections. The structures with hydrocarbon discoveries that exist along the western coast of Turkmenistan up to the Moghan Plain in Iran (Figure 1b) are associated with the deep shale ridges of the Oligocene Maykop Formation. These arch structures correspond to a Miocene proto Amu Darya delta in that region and the development of shale ridge in the delta front during the Miocene. An increase of the subsidence rate was observed during the latest Miocene and Pliocene periods and the Amu Darya River shifted to a northward position. This new large prograding system towards the South Caspian Sea Basin is associated with the deposition of the Lower Pliocene main reservoirs. It cover nearly half of the surface of the South Caspian Sea Basin with the development of a new delta front oriented NE-SW in the central part of the basin.

5.7. Mid-Pliocene to Present day: Indentation and onset of the extrusion in the Kopet Dagh

Major changes of tectonic regime have been highlighted during the Plio-Quaternary at the scale of the South Caspian Sea Basin and its surrounding domains (Axen et al., 2001; Allen et al., 2004; Copley and Jackson, 2006; Abbassi et al., 2009; Shabanian et al., 2009a) (Figure 19c). Moreover, conversion from mainly thrusting to oblique-slip and strike-slip faulting

1086 within the Kopet Dagh range occurred during the late Ceno¹¹⁴¹
 1087 zoic (~4-5 Ma) as a consequence of the major tectonic reor¹¹⁴²
 1088 ganization in NE Iran (Shabanian et al., 2009a,b). Ritz et al¹¹⁴³
 1089 (2006) suggested that a northwestward motion of the South¹¹⁴⁴
 1090 Caspian Sea Basin compared to Eurasia and/or its clockwise ro¹¹⁴⁵
 1091 tation could explain this tectonic reorganization. Masson et al¹¹⁴⁶
 1092 (2006) proposed a second tectonic force due to the initiation of¹¹⁴⁷
 1093 the northward subduction of the oceanic basement of the South¹¹⁴⁸
 1094 Caspian Sea Basin below the Apsheron ridge. ¹¹⁴⁹
 1095 In the Gorgan Plain and along the Turkmen margin of the¹¹⁵⁰
 1096 Caspian Sea, the discordant series lying on top of the older¹¹⁵¹
 1097 series folded by the first Alpine phase are deformed too (Fig¹¹⁵²
 1098 ure 15). This deformation implies a refolding of the uncon¹¹⁵³
 1099 formity by reactivation of the underlying structures. Oblique¹¹⁵⁴
 1100 inversion of the Kashafud grabens and strike-slip along the¹¹⁵⁵
 1101 Main Kopet Dagh Fault, which extends from the South Caspian¹¹⁵⁶
 1102 Sea to the Afghan border are associated with this late defor¹¹⁵⁷
 1103 mation phase. En echelon pattern of the folds along this zone¹¹⁵⁸
 1104 and en echelon fault pattern observed on 3D seismic blocks¹¹⁵⁹
 1105 demonstrate a dextral shear component during the folding and¹¹⁶⁰
 1106 inversion/reactivation. The importance of the strike-slip faults¹¹⁶¹
 1107 is demonstrated by the present-day seismicity across the range¹¹⁶²
 1108 as well as by geomorphological data. ¹¹⁶³
¹¹⁶⁴

1109 6. Conclusions

1110 In this paper, we provide a detailed and revised characteri¹¹⁶⁵
 1111 zation of the stratigraphy and the tectonics of the Kopet Dagh¹¹⁶⁶
 1112 belt from new stratigraphic, structural and seismic data. Based¹¹⁶⁷
 1113 on these new data, we are able to define the tectonic history of¹¹⁶⁸
 1114 the Kopet Dagh, which is most likely related with the adjacent¹¹⁶⁹
 1115 South Caspian Sea and Amu Darya basins. We focused our¹¹⁷⁰
 1116 study on the deformation recorded within the Kopet Dagh after¹¹⁷¹
 1117 the Cimmerian orogeny, which corresponds to the closure of the¹¹⁷²
 1118 Paleotethys Ocean. The main unconformity that is widely de¹¹⁷³
 1119 scribed within the Kopet Dagh, is located at the base of the first¹¹⁷⁴
 1120 deposited sediments after the Cimmerian orogeny: the Middle¹¹⁷⁵
 1121 Jurassic Kashafud Formation. We highlighted abrupt facies¹¹⁷⁶
 1122 and thickness changes within the Middle Jurassic Kashafud¹¹⁷⁷
 1123 Formation, as well as evidences of active rifting during the de¹¹⁷⁸
 1124 position of this formation from seismic sections. The onset of¹¹⁷⁹
 1125 deposition of the Amu Darya Basin corresponds to the Middle¹¹⁸⁰
 1126 Jurassic synchronously to the initiation of active rifting. ¹¹⁸¹
 1127 Within the thick sedimentary sequence, we evidence several¹¹⁸²
 1128 hiatus during the Cretaceous and the Paleocene in the north¹¹⁸³
 1129 western part of the belt. These sedimentary hiatus highlight¹¹⁸⁴
 1130 several local uplifts, suggesting a tectonic reactivation of the¹¹⁸⁵
 1131 belt as early as during the Late Cretaceous/Paleocene. These¹¹⁸⁶
 1132 local uplifts can be interpreted as the consequence of the dist¹¹⁸⁷
 1133 tal closure of small oceanic domains, such as the Sabvezar¹¹⁸⁸
 1134 or the Sistan oceans. Finally, the onset of the Alpine com¹¹⁸⁹
 1135 pression occurred after the deposition of the Eocene Khang¹¹⁹⁰
 1136 ran Formation and resulted in the inversion of segments of the¹¹⁹¹
 1137 Jurassic-Cretaceous sedimentary basin and the reactivation of¹¹⁹²
 1138 their bounding faults as well as newly created thrusts. To¹¹⁹³
 1139 wards the South Caspian Sea Basin, we highlighted a major¹¹⁹⁴
 1140 Late Eocene unconformity with progressive onlap above this¹¹⁹⁵
¹¹⁹⁶
¹¹⁹⁷
¹¹⁹⁸
¹¹⁹⁹

unconformity, which indicates an age for the tectonic reactiva¹¹⁴¹
 tion of the belt as early as Late Eocene-Early Oligocene. In con¹¹⁴²
 trast, there is no precise timing for the activation of the Alpine¹¹⁴³
 tectonics in the eastern part of the belt. In the western part of¹¹⁴⁴
 the belt, the double-verging structures consist of thrust faults¹¹⁴⁵
 involving basement and fault-propagation folds within the sedi¹¹⁴⁶
 mentary sequence. The entire succession until the Late Eocene¹¹⁴⁷
 is folded and newly-formed thrusts cross-cut the previous struc¹¹⁴⁸
 tures of the Middle Jurassic Kashafud grabens. In the eastern¹¹⁴⁹
 part of the belt, this study demonstrates Middle Jurassic graben¹¹⁵⁰
 inversion with evidences of forced-folding and few short-cuts,¹¹⁵¹
 as well by larger structures involving basement. Furthermore,¹¹⁵²
 seismic sections evidence several décollement levels within the¹¹⁵³
 Mesozoic sequence, which explains numerous disharmonies¹¹⁵⁴
 and fish-tails structures. This Late Eocene deformation phase¹¹⁵⁵
 is probably related to the far-field deformations due to the locking¹¹⁵⁶
 of the Neo-Tethys subduction (Frizon de Lamotte et al., 2011).¹¹⁵⁷
 The important subsidence in the South Caspian Sea Basin be¹¹⁵⁸
 gan during the Early Oligocene and it is responsible for the¹¹⁵⁹
 sealing of the structures by the thick Oligocene to Quaternary¹¹⁶⁰
 sedimentary sequences in the western part of the belt. Finally,¹¹⁶¹
 the tectonic reorganization in North Iran since the Pliocene is¹¹⁶²
 responsible for the dominance of the strike-slip component in¹¹⁶³
 the present-day deformation affecting the Kopet Dagh.¹¹⁶⁴

1109 7. Acknowledgments

This study was funded by the Darius Programme and thanks to the strong support and collaboration with the National Iranian Oil Company (NIOC), and in particular the Exploration directorate. Additional funding was provided by the projects ATIZA(CGL2009-09662-BTE) and TECLA (CGL2011-26670). The authors are very grateful to geologists from the NIOC for their support during the field missions and for the help they provided in publishing this study. Reviews by D. Frizon de Lamotte and A. Zanchi greatly improved the first version of the manuscript.

- Abbassi, A., Nasrabadi, A., Tatar, M., YaminiFard, F., Abbassi, M. R., Hatzfeld, D., Priestley, K., 2009. Crustal velocity structure in the southern edge of the Central Alborz (Iran). *Journal of Geodynamics* 49, 68–78.
- Afshar-Harb, A., 1979. The stratigraphy, tectonics and petroleum geology of the Kopet Dagh Region, northern Iran. Ph.D. thesis, Imperial College of Science and Technology, University of London.
- Agard, P., Omrani, J., Jolivet, L., Whitechurch, H., Vrielynck, B., Spakman, W., Monié, P., Meyer, B., Wortel, R., 2011. Zagros orogeny: a subduction-dominated process. *Geol. Mag.* 148 (5-6), 692–725.
- Aghanabati, A., 2004. Geology of Iran. Geological survey of Iran publication, 558p.
- Alavi, M., 1992. Thrust tectonics of Binalood region, NE Iran. *Tectonics* 11, 360–370.
- Alavi, M., Vaziri, H., Emami, K. S., Lasemi, Y., 1997. The triassic and associated rocks of the Agh-Darband areas in central and northeastern Iran as remnant of the southern Turanian active continental margin. *GSA Bulletin* 109, 1563–1575.
- Allameh, M., Torshizian, H., Moradian, F., Amandar, B., 2010. Study of ostracodes in Abderaz Formation in Kopet-Dagh Basin, the 1st International Applied Geological Congress, Department of Geology, Islamic Azad University - Mashad Branch, Iran.
- Allen, M., Jackson, J., Walker, R., 2004. Late Cenozoic reorganization of the Arabia-Eurasia collision and the comparison of short-term and long-term deformation rates. *Tectonics* 23.

- Allen, M. B., Vincent, S. J., Alsop, G. I., Ismaili-zadeh, A., Flecker, R., 2003. Late Cenozoic deformation in the South Caspian region: effects of a rigid basement block within a collision zone. *Tectonophysics* 366, 223–239.
- Amurskiy, G. I., 1971. The deep structure of the Kopetdagh. *Geotectonics* 1, 34–40.
- Axen, G. J., Lam, P. S., Grove, M., Stockli, D. F., Hassanzadeh, J., 2001. Exhumation of the west-central Alborz Mountains, Iran, Caspian subsidence and collision-related tectonics. *Geology* 29 (6), 559–562.
- Barrier, E., Vrielynck, B., 2008. Palaeotectonic maps of the Middle East. MEBE Programme. Atlas of 14 maps, CCGM.
- Baud, A., Stampfli, G., 1989. Tectonogenesis and evolution of a segment of the Cimmerids: The volcano-sedimentary Triassic of Agh-Darband (Kopetdagh, North-East Iran). In: SENGOR, A.M.D., (Ed.): *Tectonic evolution of the Tethyan Region*, Kluwer, Dordrec, 265–275.
- Berberian, M., 1983. The Southern Caspian: A compressional depression flooded by a trapped, modified oceanic crust. *Canadian Journal of Earth Sciences* 20 (2), 163–183.
- Berberian, M., King, G. C. P., 1981. Towards a paleogeography and tectonic evolution of Iran. *Canadian Journal of Earth Sciences* 18, 1764–1766.
- Berra, F., Zanchi, A., Mattei, M., Nawabd, A., 2007. Late cretaceous transgression on a Cimmerian high (neka valley, eastern Alborz, Iran): A geodynamic event recorded by glauconitic sands. *Sedimentary Geology* 199 (3–4), 189–204.
- Bröcker, M., Fotoohi Rad, G., Burgess, R., Theunissen, S., Paderin, I., Rodionov, N., Salimi, Z., 2013. New age constraints for the geodynamic evolution of the sistan suture zone, eastern Iran. *Lithos* 170, 17–34.
- Brunet, M.-F., Korotaev, M. V., Ershov, A. V., Nikishin, A. M., 2003. The South Caspian Basin: a review of its evolution from subsidence modelling. *Sedimentary Geology* 156, 119–148.
- Colletta, B., Roure, F., de Toni, B., Loureiro, D., 1997. Tectonic inheritance, crustal architecture, and contrasting structural styles in the Venezuela Andes. *Tectonics*.
- Copley, A., Jackson, J., 2006. Active tectonics of the Turkish-Iranian plateau. *Tectonics* 25 (TC6006).
- Dikenshteyn, G., Maksimov, S., Semenovich, V., 1983. *Petroleum provinces of the URSS (Neftegazonosnyye provintsii SSSR)*, Moscow, Nedra, 272p.
- Duerto, L., Escalona, A., Mann, P., 2006. Deep structure of the Meacuterida Andes and Sierra de Perijá mountain fronts, Maracaibo Basin, Venezuela. *AAPG Bulletin* 90 (4), 505–528.
- Emami, K. S., Fürsich, F. T., Wilmsen, M., 2004. Documentation and significance of tectonic events in the northern Tabas block (East-central Iran) during the Middle and Late Jurassic. *Revista Italiana di Paleontologia Stratigrafia* 110 (1), 163–171.
- Frizon de Lamotte, D., Raulin, C., Mouchot, N., Wrobel-Daveau, J.-C., Blanpied, C., Ringenbach, J.-C., 2011. The southernmost margin of the Tethys realm during the Mesozoic and Cenozoic: Initial geometry and timing of inversion processes. *Tectonics* 30 (3).
- Garzanti, E., Gaetani, M., 2002. Unroofing history of late Paleozoic magmatic arcs within the Turan Plate (Tuarkyr, Turkmenistan). *Sedimentary Geology* 151, 67–87.
- Ghasemi-Nejad, E., Head, M. J., Zamani, M., 2008. Dinoflagellate cysts from the upper Triassic (Norian) of northeastern Iran. *Journal of Micropalaeontology* 27, 125–134.
- Golonka, J., 2004. Plate tectonic evolution of the southern margin of Eurasia in the Mesozoic and Cenozoic. *Tectonophysics* 381, 235–273.
- Hollingsworth, J., Fattahi, M., Walker, R., Talebian, M., Bahroudi, A., Jackson, M. J., Copley, A., 2010. Oroclinal bending, distributed thrust and strike-slip faulting, and the accommodation of Arabia-Eurasia convergence in NE Iran since the Oligocene. *Geophysical Journal International* 181, 1214–1246.
- Hollingsworth, J., Jackson, J., Walker, R., Gheitanchi, M., Bolourchi, M., 2006. Strike-slip faulting, rotation, and along-strike elongation in the Kopeh Mountains, NE Iran. *Geophys. J. Int.* 166, 1161–1177.
- Hollingsworth, J., Jackson, J., Walker, R., Nazari, H., 2008. Extrusion tectonics and subduction in the eastern South Caspian region since 10 Ma. *Geology* 36 (10), 763–766.
- Hollingsworth, J., 2007. Active tectonics of NE Iran. Ph.D. thesis, College, University of Cambridge.
- Jamali, F., Hessami, K., Ghorashi, M., 2011. Active tectonics and strain partitioning along dextral fault system in Central Iran: analysis of geomorphological observations and geophysical data in the Kasha region. *Journal of Asian Earth Sciences* 40, 1015–1025.
- Kalantari, A., 1969. Foraminifera from the Middle Jurassic–Cretaceous succession of Kopetdagh region. NIOC, Geological Laboratory Publication.
- Kavoosi, M., Lasemi, Y., Sherkati, S., Moussavi-Harami, R., 2009a. Facies analysis and depositional sequences of the Upper Jurassic Mozdur Formation, a reservoir in the Kopet Dagh Basin, NE Iran. *Journal of Petroleum Geology* 32 (3), 235–260.
- Kavoosi, M., Sepehr, M., Sherkati, S., 2009b. The kopet-dagh basin evolution during middle-late Jurassic. Extended abstracts EAGE Meeting, Shiraz, Iran.
- Korotaev, M., Ershov, A., Nikishin, A., Brunet, M. F., 1999. Sedimentary basins in compressional environment—modelling of the rapid subsidence. EAGE Meeting, June, 1999, Helsinki, Finland. Extended abstract.
- Lyberis, N., Manby, G., 1999. Oblique to orthogonal convergence across the Turan Block in the post-Miocene. *AAPG Bulletin* 83 (7), 1135–1160.
- Lyberis, N., Manby, G., Poli, J.-T., Kalougin, V., Yousouphocae, H., Ashirov, T., 1998. Post-Triassic evolution of the southern margin of the Turan plate. *C.R. Acad. Sci. Paris* 326, 137–143.
- Maggi, M., Jackson, J., McKenzie, D., Priestley, K., 2000. Earthquake focal depths, effective elastic thickness, and the strength of the continental lithosphere. *Geology* 28 (6), 495–498.
- Majadifard, M., 2003. Biostratigraphy, lithostratigraphy, ammonite taxonomy and microfacies analysis of the Middle and Upper Jurassic of north-eastern Iran. Ph.D. thesis, Der Bayerischen Julius-Maximilians-Universität Würzburg.
- Martini, E., 1971. Standard Tertiary and Quaternary calcareous nannoplankton zonation. In: *Second Planktonic Conference*, Rome, pp. 739–785.
- Masson, F., Djamour, Y., Gorp, S. V., Chéry, J., Tatar, M., Tavakoli, F., Nankali, H., Vernant, P., 2006. Extension in NW Iran driven by the motion of the South Caspian Basin. *Earth and Planetary Science Letters* 252, 180–188.
- Moussavi-Harami, R., Brenner, R., 1990. Lower Cretaceous (Neocomian) fluvial deposits in eastern Kopet-Dagh Basin, northeastern Iran. *Cretaceous Research* 11, 163–174.
- Moussavi-Harami, R., Brenner, R., 1992. Geohistory analysis and petroleum reservoir characteristics of Lower Cretaceous (Neocomian) sandstones, eastern Kopet Dagh Basin, northeastern Iran. *American Association of Petroleum Geologists Bulletin* 76, 1200–1208.
- Moussavi-Harami, R., Mahboubi, A., Nadjafi, M., Brenner, R. L., Mortazavi, M., 2009. Mechanism of calcareous formation in the Lower Cretaceous (Neocomian) fluvial deposits, northeastern Iran based on petrographic, geochemical data. *Cretaceous Research* 30, 1146–1156.
- Muttoni, G., Mattei, M., Balini, M., Zanchi, A., Gaetani, A., Berra, F., 2009. The drift history of Iran from the Ordovician to the Triassic. *Geological Society of London, Special Publication: South Caspian to Central Iran Basins* 312, 7–29.
- Perch-Nielsen, K., 1985. Mesozoic calcareous nannofossils, in Bolli, H.M., Saunders, J.B., and Perch-Nielsen. *Plankton Stratigraphy*: Cambridge, Cambridge University Press, 330–426.
- Poursoltani, M. R., Gibling, M. R., 2011. Composition, porosity, and reservoir potential of the Middle Jurassic Kashafrud Formation, northeast Iran. *Marine and Petroleum Geology* 28 (5), 1094–1110.
- Poursoltani, M. R., Moussavi-Harami, S. R., Gibling, M. R., 2007. Jurassic deep-water fans in the Neo-Tethys Ocean: The Kashafrud Formation of the Kopet-Dagh basin, Iran. *Sedimentary Geology* 198 (1), 53–74.
- Reilinger, R., McClusky, S., Vernant, P., Lawrence, S., Ergintav, S., Cakmak, R., Ozener, H., Kadirov, F., Guliev, I., Stepanyan, R., Nadariya, M., Hahubia, G., Mahmoud, S., Sakr, K., ArRajehi, A., Paradissis, D., Al-Aydrus, A., Prilepin, M., Guseva, T., Evren, E., Dmitrova, A., Filikov, S., Gomez, F., Al-Ghazzi, R., Karam, G., 2006. GPS constraints on continental deformation in the Africa-Arabia-Eurasia continental collision zone and implications for the dynamics of plate interactions. *Journal of Geophysical Research: Solid Earth* 111 (5).
- Ritz, J.-F., Nazari, H., Ghassemi, A., Salamati, R., Shafei, A., Solaymani, S., Vernant, P., 2006. Active transtension inside central Alborz: a new insight into northern Iran–southern Caspian geodynamics. *Geology* 34 (6), 477–480.
- Robert, A., Pubellier, M., de Sigoyer, J., Vergne, J., Lahfid, A., Cattin, R., Findling, N., Zhu, J., 2010. Structural and thermal characters of the Longmen Shan (Sichuan, China). *Tectonophysics* 491 (1–4), 165–173.
- Ruttner, A., 1991. The Triassic of Aghdarband (AgDarband), NE-Iran, and its pre-Triassic frame. *Abhandlungen der Geologischen Bundesanstalt* 38, 252p.
- Saccani, E., Delavari, M., Beccaluva, L., Amini, S., 2010. Petrological and

- 1342 geochemical constraints on the origin of the nehbandan ophiolitic complex 413
1343 (eastern Iran): Implication for the evolution of the Sistan Ocean. *Lithos* 414
1344 117 (1–4), 209 – 228. 1415
- 1345 Saintot, A., Brunet, M.-F., Yakoklev, F., Sébrier, M., Stephenson, R., Ershov, 416
1346 A., Chalot-Prat, F., McCann, T., 2006. The Mesozoic –Cenozoic tectonic 417
1347 evolution of the Greater Caucasus. Geological Society of London, *Memoirs* 418
1348 32, 277–289. 1419
- 1349 Sengor, A. M. C., 1990. A new model for the late Palaeozoic–Mesozoic tectonic
1350 evolution of Iran and implications for Oman. Geological Society of London,
1351 *Special Publications* 49, 797–831.
- 1352 Shabanian, E., Bellier, O., Siame, L., Abbassi, M. R., Bourlès, D., Braucher, R.,
1353 Farbod, Y., 2012. The Binalud Mountains: A key piece for the geodynamic
1354 puzzle of NE Iran. *Tectonics* 31 (TC6003).
- 1355 Shabanian, E., Bellier, O., Siame, L., Arnaud, N., Abbassi, M. R., Cochemé, J.-
1356 J., 2009a. New tectonic configuration in NE Iran: Active strike-slip faulting
1357 between the Kopet Dagh and Binalud mountains. *Tectonics* 28 (TC5002).
- 1358 Shabanian, E., Siame, L., Bellier, O., Benedetti, L., Abbassi, M. R., 2009b.
1359 Quaternary slip rates along the northeastern boundary of the Arabia–Eurasia
1360 collision zone (Kopet Dagh Mountains, Northeast Iran). *Geophysical Journal International* 178, 1055–1077.
- 1362 Shahidi, A., 2008. Evolution tectonique du Nord de l’Iran (Alborz et Kopet
1363 Dagh) depuis le Mésozoïque. Ph.D. thesis, Université Pierre et Marie Curie
1364 - Paris VI.
- 1365 Sharafi, m., ashuri, m., Mahboubi, A., Moussavi Harami, S. R., December
1366 2012. Stratigraphic application of Thalassinoides ichnofabric in delineat-
1367 ing sequence stratigraphic surfaces (Mid-Cretaceous), Kopet-Dagh Basin,
1368 northeastern Iran. *Palaeoworld* 21 (3), 202–216.
- 1369 Sheikholeslami, M., Kouhpeym, M., 2012. Structurale analysis and tectonic
1370 evolution of the eastern Binalud Mountains, NE Iran. *Journal of Geodynam-
1371 ics* 61, 23–46.
- 1372 Sherhati, S., Letouzey, J., de Lamotte, D. F., 2006. Central Zagros fold-thrust
1373 belt (Iran): New insights from seismic data, field observation, and sandbox
1374 modeling. *Tectonics* 25, 233–244.
- 1375 Sherhati, S., Molinaro, M., de Lamotte, D. F., Letouzey, J., 2005. Detachment
1376 folding in the central and eastern zagros fold-belt (iran): salt mobility, mul-
1377 tiple detachments and late basement control. *Journal of Structural Geology*
1378 27 (9), 1680 – 1696.
- 1379 Taheri, J., Fürsich, F., Wilmsen, M., 2009. Stratigraphy, depositional envi-
1380 ronments and geodynamic significance of the Upper Bajocian Bathonian
1381 Kashafud Formation, NE Iran. Geological Society of London, *Special Pub-
1382 lication, South Caspian to Central Iran Basins* 312, 205–218.
- 1383 Tavakoli, F., 2007. Present-day deformation and kinematics of the active faults
1384 observed by GPS in the Zagros and East of Iran. Ph.D. thesis, Université
1385 Joseph Fourier - Grenoble I.
- 1386 Thierstein, H. R., 1976. Mesozoic calcareous nannoplankton biostratigraphy of
1387 marine sediments. *Marine Micropaleontology* 1, 325–362.
- 1388 Thomas, J., Cobbold, P., Shein, V., Douaran, S. L., 1999. Sedimentary record
1389 of Late Paleozoic to recent tectonism in Central Asia–analysis of subsurface
1390 data from the Turan and South Kazakh domains. *Tectonophysics* 313, 243–
1391 263.
- 1392 Ulmishek, G. F., 2001. Petroleum geology and resources of the Middle Caspian
1393 basin, former Soviet Union. U.S. Geological Survey Bulletin 99, 116p.
- 1394 Ulmishek, G. F., 2004. Petroleum geology and resources of the Amu-Darya
1395 Basin, Turkmenistan, Uzbekistan, Afghanistan, and Iran. U.S. Geological
1396 Survey Bulletin 2201-4, 32p.
- 1397 Vernant, P., Nilforoushan, F., Hatzfeld, D., Abbassi, M. R., Vigny, C., Masson,
1398 F., Nankali, H., Martinod, J., Ashtiani, A., Bayer, R., Tavakoli, F., Chery,
1399 J., 2004. Present-day crustal deformation and plate kinematics in the Middle
1400 East constrained by GPS measurements in Iran and northern Oman. *Geoph-
1401 ysis. J. Int* 157, 381–398.
- 1402 Wilmsen, M., Fürsich, T., Emami, K. S., Majidifard, M. R., Taheri, M. R., 2009.
1403 The Cimmerian Orogeny in northern Iran: tectono-stratigraphic evidence
1404 from the foreland. *Terra Nova* 21, 221–218.
- 1405 Zanchetta, S., Berra, F., Zanchi, A., Bergomi, M., Caridroit, M., Nicorab, A.,
1406 Heidarzadeh, G., 2013. The record of the Late Palaeozoic active margin of
1407 the Palaeotethys in NE Iran: Constraints on the Cimmerian orogeny. *Gond-
1408 wana Research* 24 (3-4), 1237–1266.
- 1409 Zanchi, A., Balini, M., Ghassemi, M. R., Zanchetta, S., 2-7 May 2010. Mech-
1410 anism of calcrete formation in the Lower Cretaceous (Neocomian) fluvial
1411 deposits, northeastern Iran based on petrographic, geochemical data, EGU
1412 General Assembly.
- Zanchi, A., Berra, A., Mattei, M., Ghasemi, M. R., Sabouri, J., 2006. Inversion
tectonics in Central Alborz, Iran. *Journal of Structural Geology* 28, 2023–
2037.
- Zanchi, A., Zanchetta, S., Berra, F., Mattei, M., Garzanti, E., Molyneux, S.,
Nawab, A., Sabouri, J., 2009. The Eo-Cimmerian (Late? Triassic) orogeny
in North Iran. Geological Society of London, *Special Publications* 312, 31–
55.

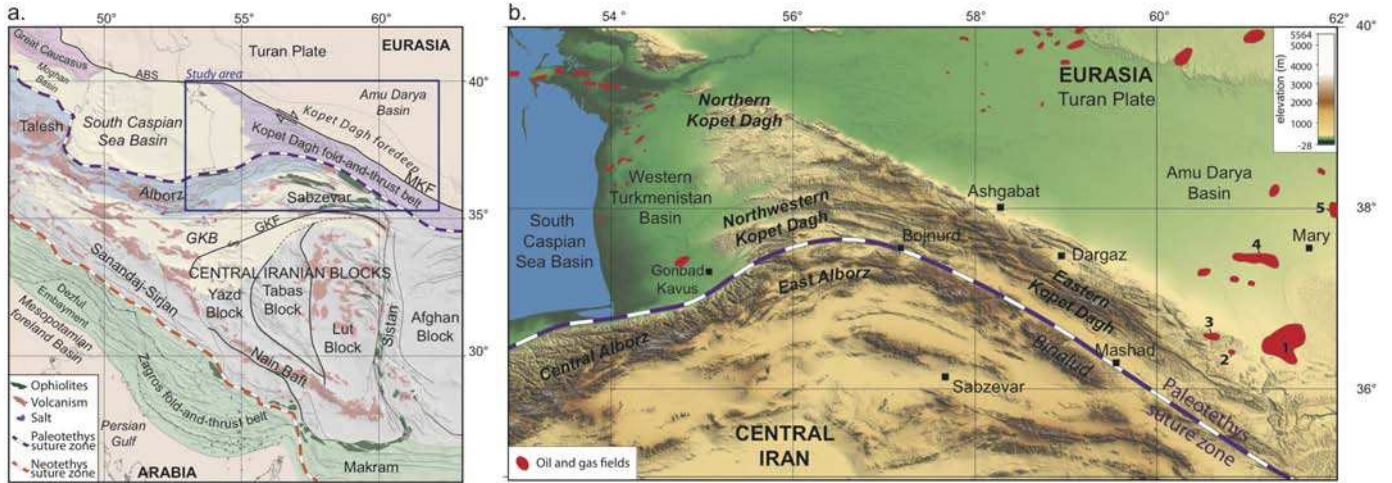


Figure 1: a. Topographic map (ETOPO 1 data) of Iran showing the main tectonic units with location of the main volcanic rocks, salt and ophiolites outcrops. Neotethys and Paleotethys suture zones are indicated. MKF: Main Kopet Dagh Fault; GKF: Great Kavir Fault; GKB: Great Kavir Basin; ABS: Apsheron-Balkhan System b. Topographic map of the Kopet Dagh range from ASTER GDEM data showing the location of the gas and oil fields (red area) from publications (Dikenshteyn et al., 1983; Ulmishkek, 2004) and from the Oil and Gas Infrastructure in the Caspian Sea region, March 2001 from the United State Government. The Paleotethys suture zone and major places are indicated on this map. Major gas fields: 1: Dauletabad; 2: Gonbadli; 3: Khangiran; 4: Shaltyk; 5: Bayram-Ali; 6: Achak

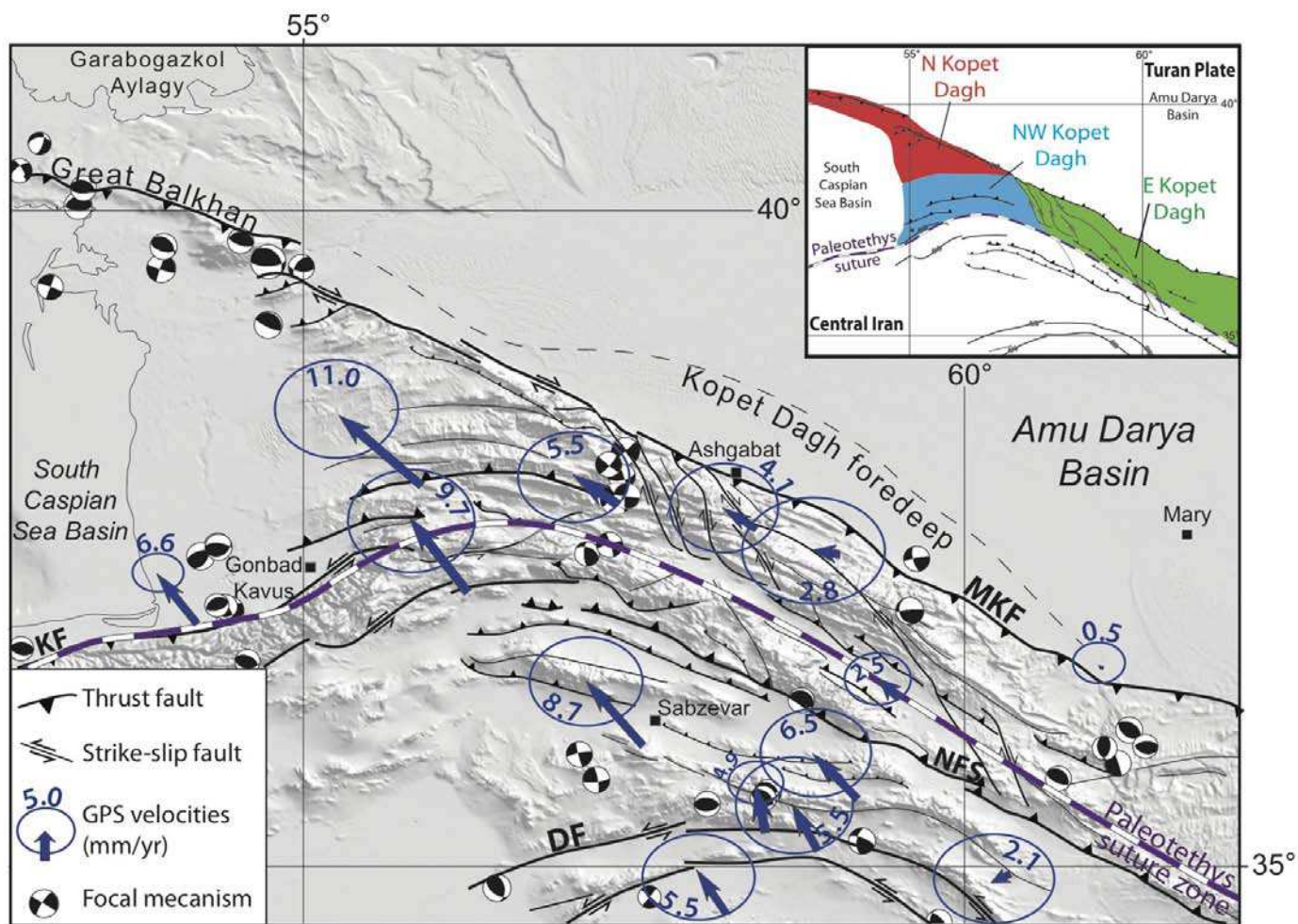


Figure 2: Seismotectonic map of the Kopet Dag region where the major recent faults are represented according to (Hollingsworth et al., 2006; Hollingsworth, 2007; Hollingsworth et al., 2008, 2010; Shabaniyan et al., 2009a,b, 2012). Blue arrows represent GPS velocities relative to Eurasia fixed; the error ellipses indicate formal errors within 95 percent confidence interval (Tavakoli, 2007). The location of the Paleotethys suture zone is indicated. Focal mechanisms are taken from CMT Harvard catalogue for the period 1976-2012. The shaded relief background has been made from ASTER GDEM data. DF: Doruneh Fault; KF: Khazar Fault; MKF: Main Kopet Dag Fault; NFS: Neyshabur Fault System.

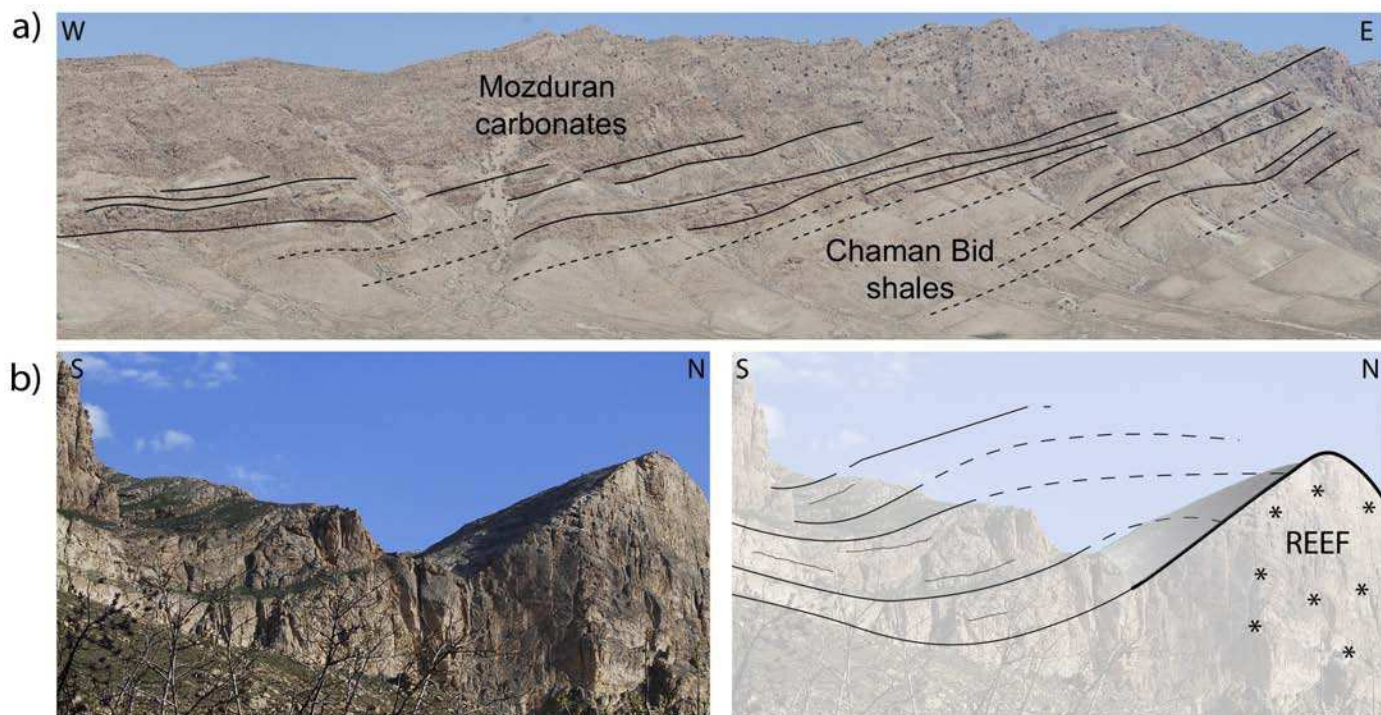


Figure 4: a) Prograding sequence of limestones belonging to the Upper Jurassic Mozduran Formation within the upper part of the upper Jurassic shaly Chaman Bid Formation b) Clastic filling between 2 reefs within the Upper Jurassic Mozduran Formation. Similar features have been observed on seismic sections as highlighted in Figure 10.

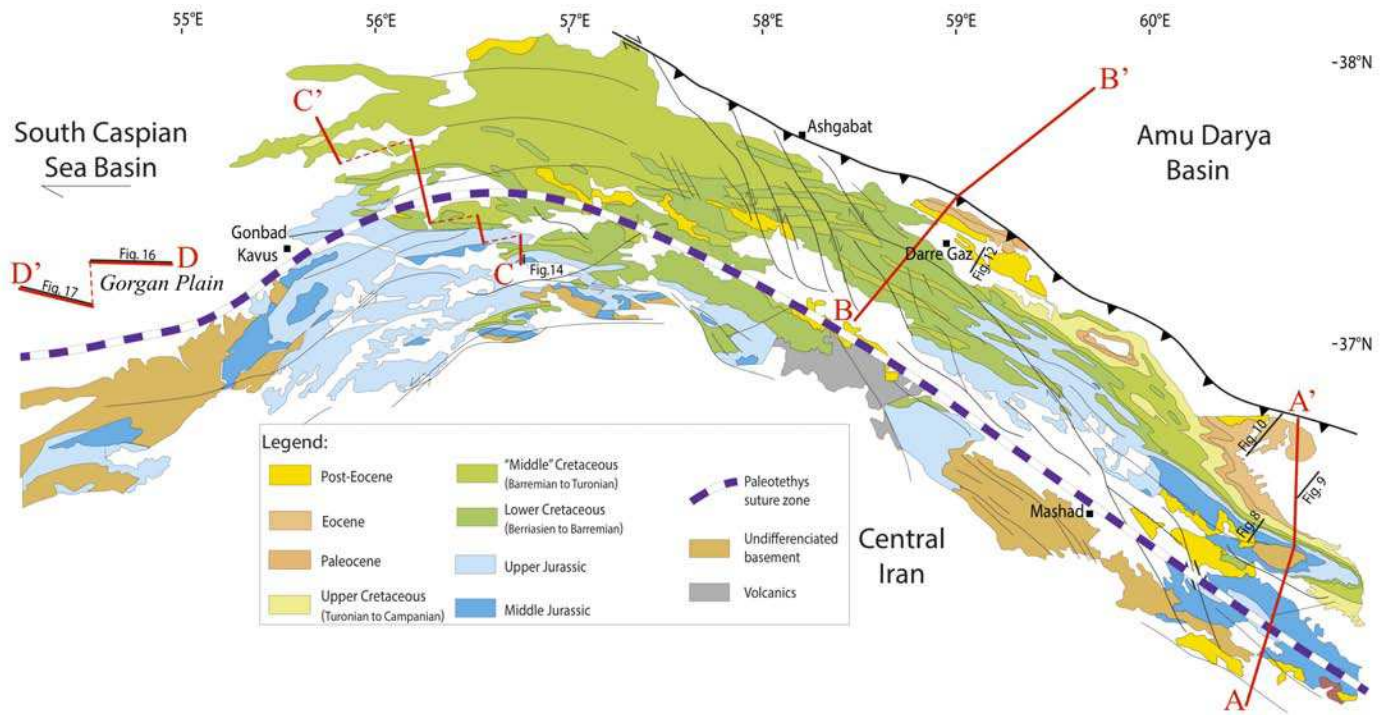


Figure 5: Simplified geological map of the Kopet Dagh area compiled from the geological maps of the Geological Survey of Iran. Locations of the 4 regional cross-sections presented in this article are indicated.

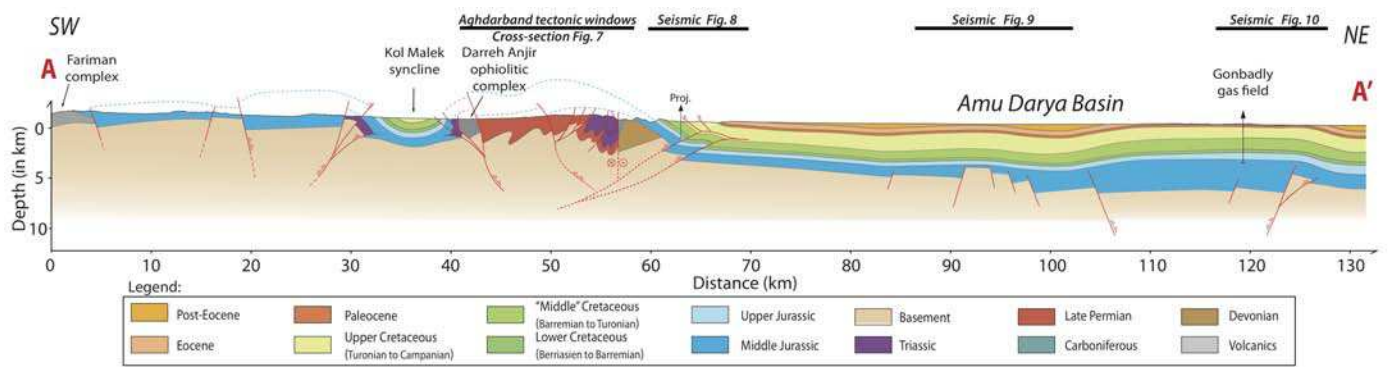


Figure 6: The Aghdarband-Gonbadly cross-section (see location on Figure 5). This cross-section shows structural relationships between the rocks deformed by the Variscan and/or the Cimmerian orogeny that outcrop in the Aghdarband erosional windows and the series deposited in the southwestern part of the Amu Darya Basin affected by the Alpine inversion of the Middle Jurassic extensional structures. Locations of the seismic data presented in this article and borehole data are indicated.

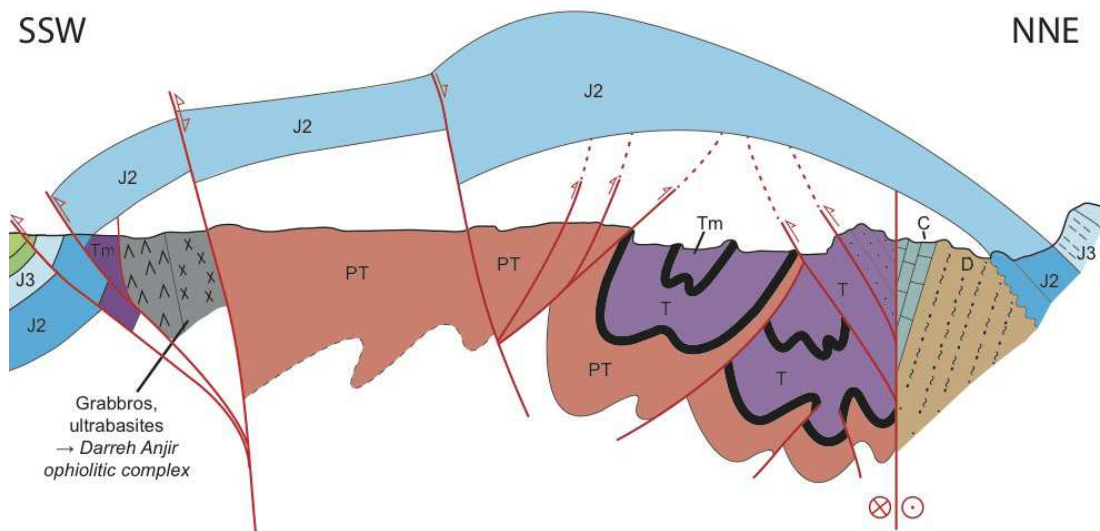


Figure 7: Tectonic sketch of the Aghdarband erosional window, modified from previous published cross-sections (Ruttner, 1991; Zanchi et al., 2010). The folded Triassic and older series are preserved below double verging thrusts. The deformed rocks are overlain by the Middle Jurassic Kashafrud Formation characterized by its basal conglomerate (J2). D: Devonian, C: Carboniferous, PT: Permo-Triassic molassic sediments, T: Triassic series excepting the Miankuhi Formation (Tm), J2: Conglomeratic base of the Middle Jurassic Kashafrud Formation and J3: Upper part of the Middle Jurassic Kashafrud Formation.

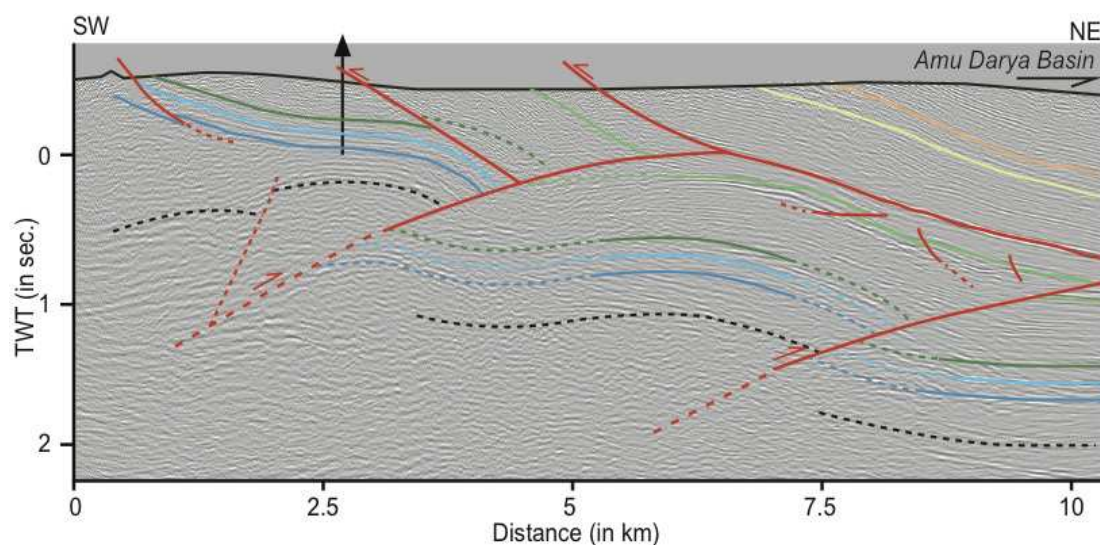


Figure 8: Seismic section showing the triangle structure to the NW of the Aghdarband erosional window (location on the Aghdarband cross-section, Figure 6). This seismic line shows two major North-directed basement thrusts that branch into an inferred detachment within the shales of the Campanian. For calibration, we used field data and information from the borehole represented in the figure. Legend of the horizons: Black = Top Trias; Dark blue = top Kashafrud Formation (Middle Jurassic); Light blue = top Mozduran Formation (Upper Jurassic); Dark green = Top Shurijeh Formation (Neocomian); Green = Top Aitamir Formation (Cenomanian); Light green = Top Kalat Formation (Uppermost Cretaceous); Orange = Top Chehel Kaman Formation (Paleocene).

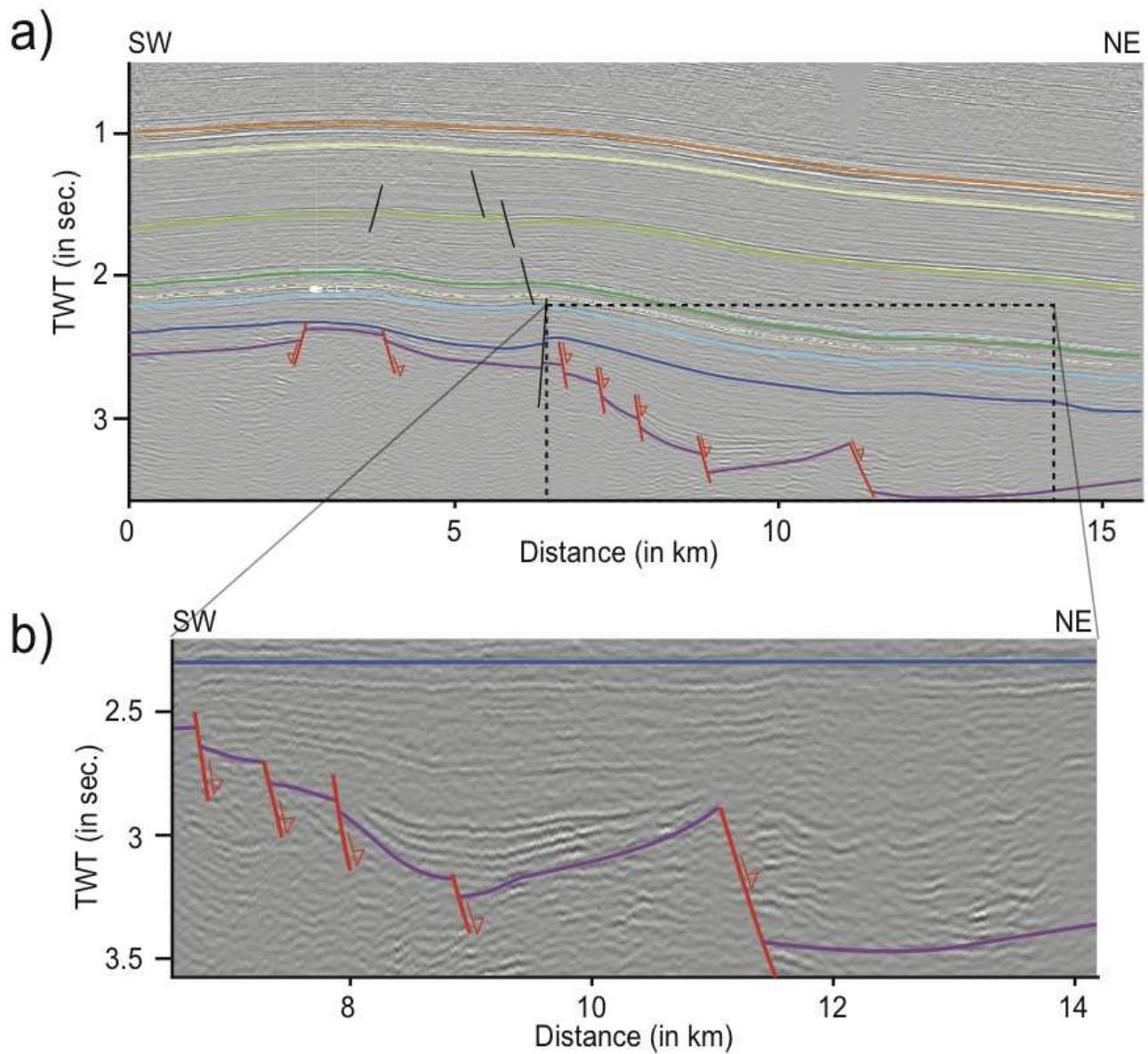


Figure 9: a) Seismic section from the Gonbadli gas field area (location in Figure 5) showing large-scale basement uplift. The Jurassic structure is shown by opposite set of normal faults, some of which seem to preserve their original normal displacement. b) Zoom on the previous seismic transect with a flattening done at the top Middle Jurassic horizon which highlight of the Kashafrud half graben structures. Legend of the horizons: Purple = Top Trias; Dark blue = top Kashafrud Formation (Middle Jurassic); Light blue = top Mozduran Formation (Upper Jurassic); Dark green = Top Shurijeh Formation (Neocomian); Green = Top Aitamir Formation (Cenomanian); Light green = Top Kalat Formation (Uppermost Cretaceous); Orange = Top Chehel Kaman Formation (Paleocene).

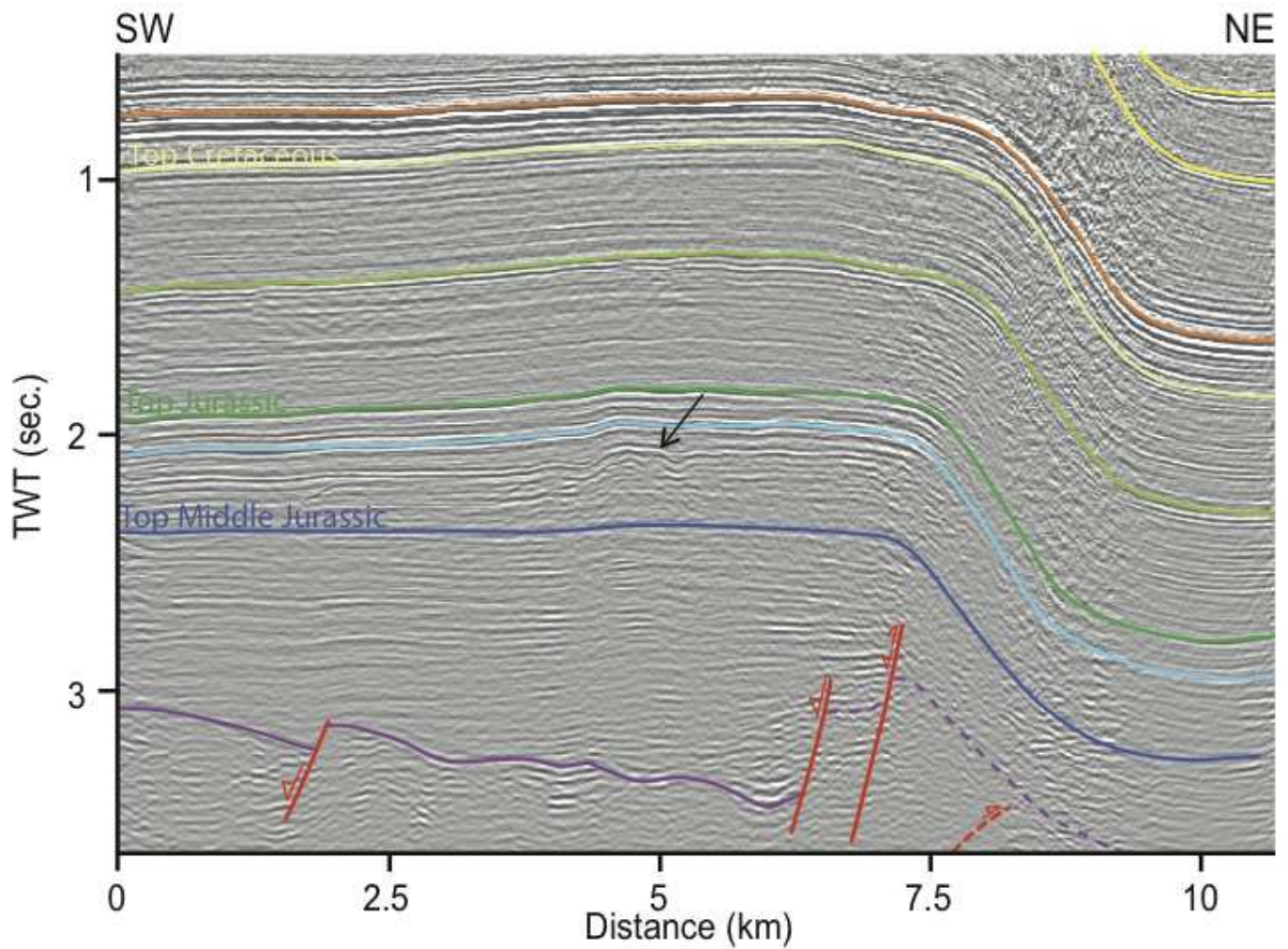


Figure 10: Seismic section across the Khangiran gas field extracted from a 3D cube. The Khangiran structure is due to the Tertiary inversion of a Middle Jurassic half graben. The occurrence of growth strata within the Oligocene-Neogene sequences highlights that the graben inversion is associated to the Alpine tectonic phase as a consequence of an inversion tectonics. The black arrow highlights some carbonate build-ups within the Upper Jurassic Mozduran limestones. Legend of the horizons: Purple = Top Trias; Dark blue = top Kashafrud Formation (Middle Jurassic); Light blue = top Mozduran Formation (Upper Jurassic); Dark green = Top Shurijeh Formation (Neocomian); Green = Top Aitamir Formation (Cenomanian); Light green = Top Kalat Formation (Uppermost Cretaceous); Orange = Top Chehel Kaman Formation (Paleocene); Yellow = Intra Oligo-Neogene conglomerates.

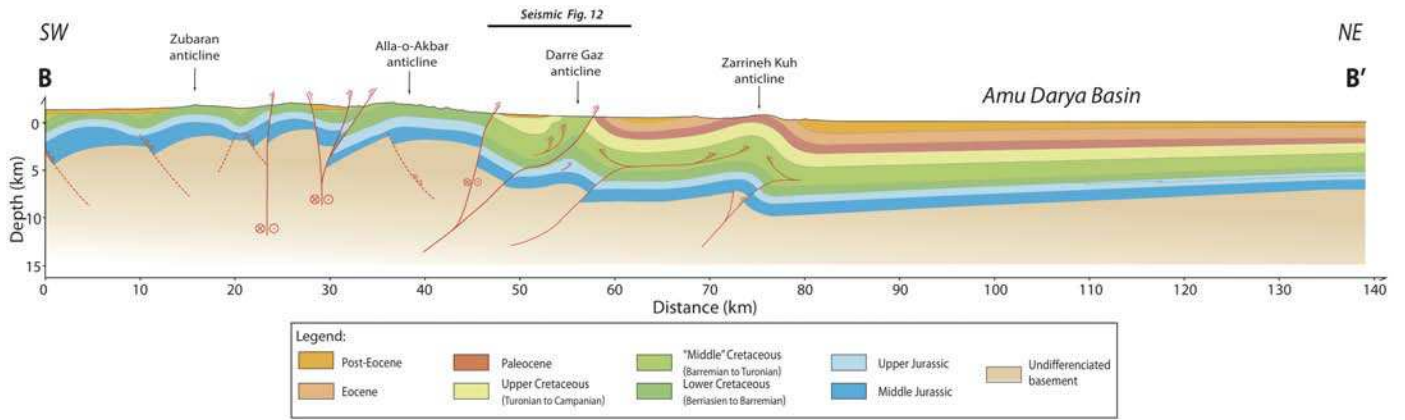


Figure 11: The Darre Gaz regional cross-section (see location in Figure 5) shows the inversion of Middle Jurassic front of the belt is characterized by North-verging basement thrusts that mostly branch into a major detachment within the Aptian-Albian series.

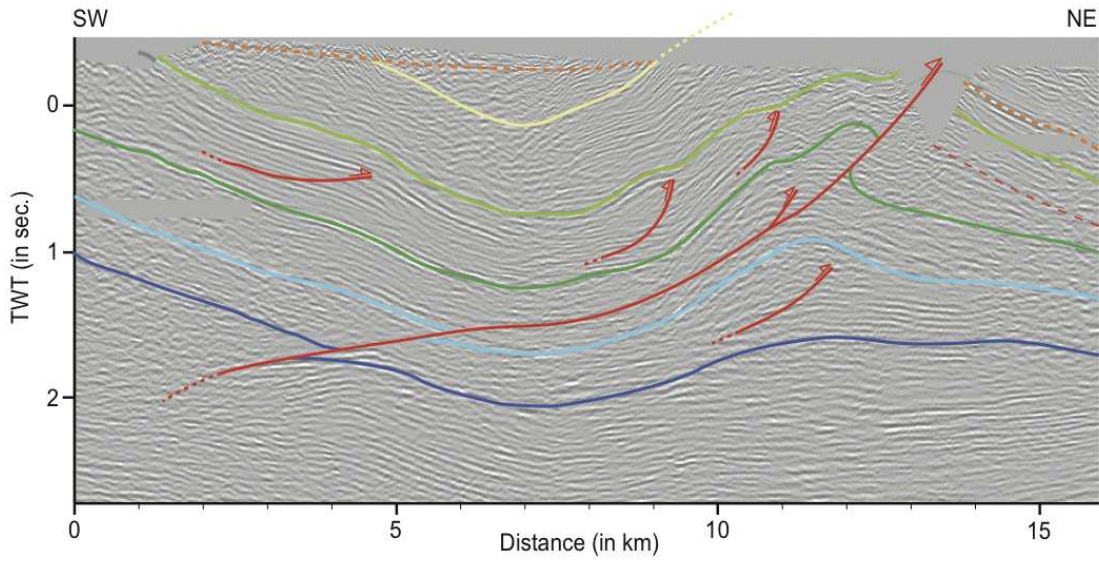


Figure 12: Seismic section showing typical structures of the Darre Gaz area with a disharmony between deep and surface structures implying several décollement levels within the Cretaceous series. The deeper horizons of this section are not calibrated. Legend of the horizons: Black = Top Trias; Dark blue = top Kashafrud Formation (Middle Jurassic); Light blue = top Mozdu-ran Formation (Upper Jurassic); Dark green = Top Shurijeh Formation (Neocomian); Green = Top Aitamir Formation (Cenomanian); Light green = Top Kalat Formation (Uppermost Cretaceous); Orange = Top Chehel Kaman Formation (Paleocene).

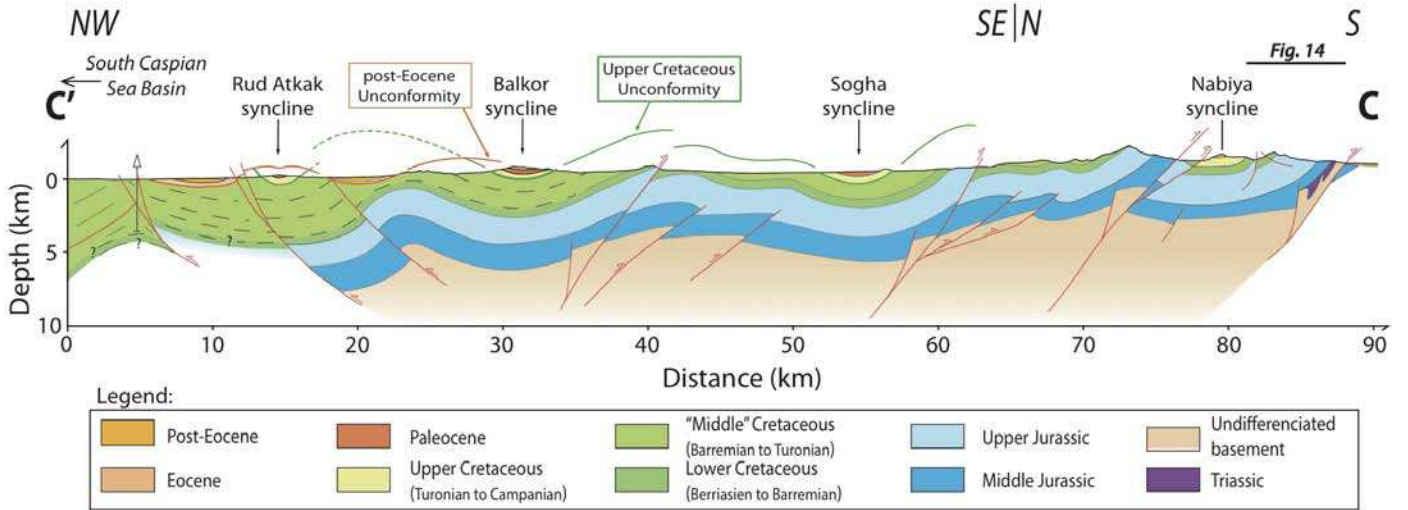


Figure 13: The western regional cross-section (see location in Figure 5) highlights the upper basement décollement level forming double-verging structures that cross-cut the Middle Jurassic rift system. This cross-section also shows two folded unconformities: at the base of the Lower Cretaceous and at the base of the post-Eocene sediments.

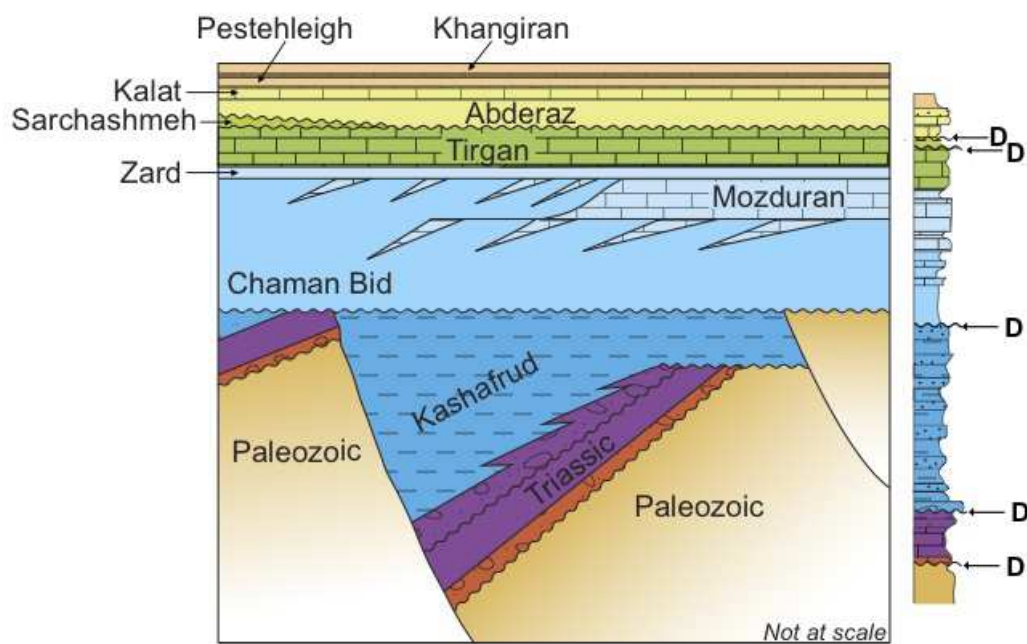


Figure 14: Scheme of several fields observations highlighting the structural relationships between the different stratigraphic formations. The important thickness variations of the Middle Jurassic Kashafrud Formation is due to active rifting during deposition. An erosional surface at the base of the Late Jurassic Chaman Bid Formation and several progradations of the Upper Jurassic Mozduran limestones into the marls of the Late Jurassic Chaman Bid Formation are observed. Notice the reduced thickness of Cretaceous and Tertiary series.

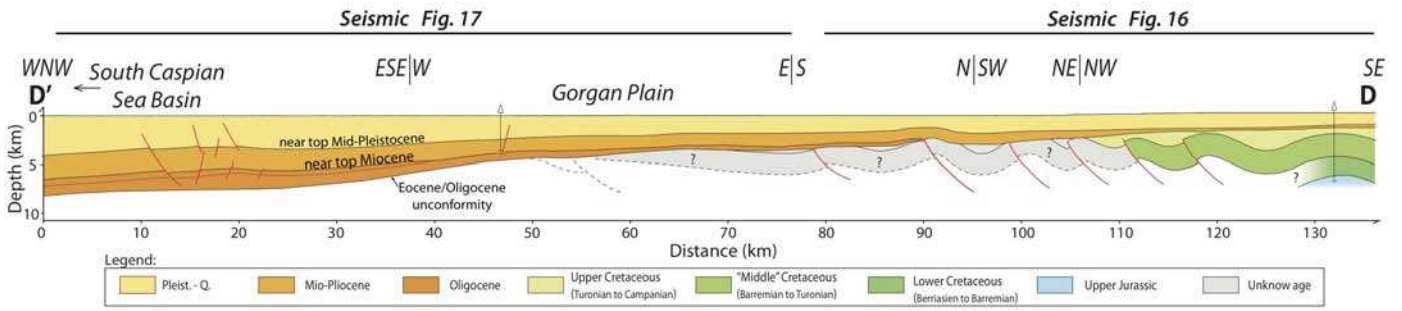


Figure 15: The Gorgan Plain regional cross-section (see location in Figure 5) shows the buried folds of the Kopet Dagh beneath the thick post-Eocene sediments belonging to the South Caspian Sea Basin. This cross-section has mainly been constructed from seismic sections.

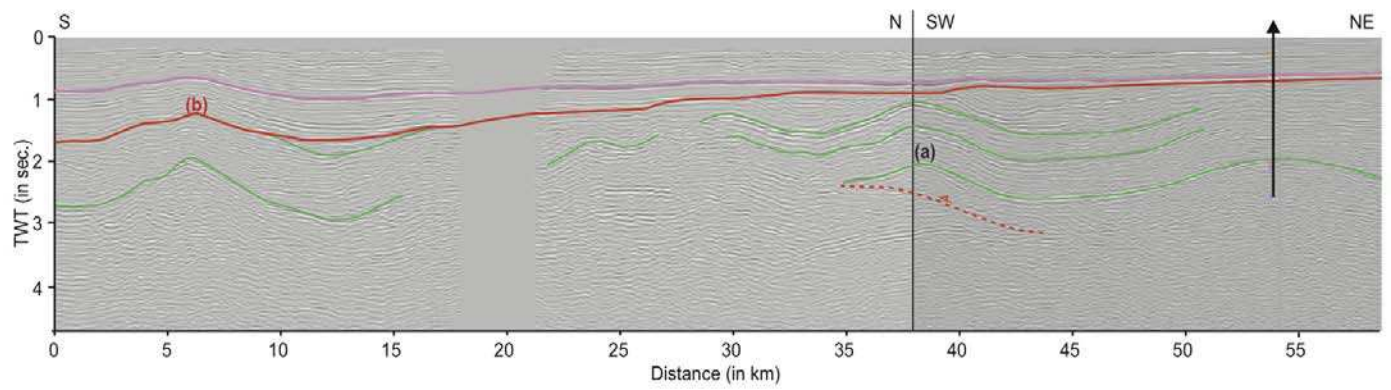


Figure 16: Seismic section below the Gorgan Plain to the Western part of the Kopet Dagh. This section shows the folded structures overlain by a major unconformity with progressive onlap above this unconformity. The pink horizon near the top of the section corresponds to the top of the Mid-Pleistocene strata, the red horizon corresponds to the Late-Eocene and Early Oligocene unconformity, the green horizons correspond to the Late Cretaceous marls and clastic sediments. Within the syncline, it is possible that the Paleogene up to the Upper Eocene were preserved. (a) Folded and faulted structures, the folds are oriented NE-SW parallel to the orientation of the western part of the Kopet Dagh belt (b) The red line corresponds to the folded unconformity at the base of the Oligocene-Neogene strata.

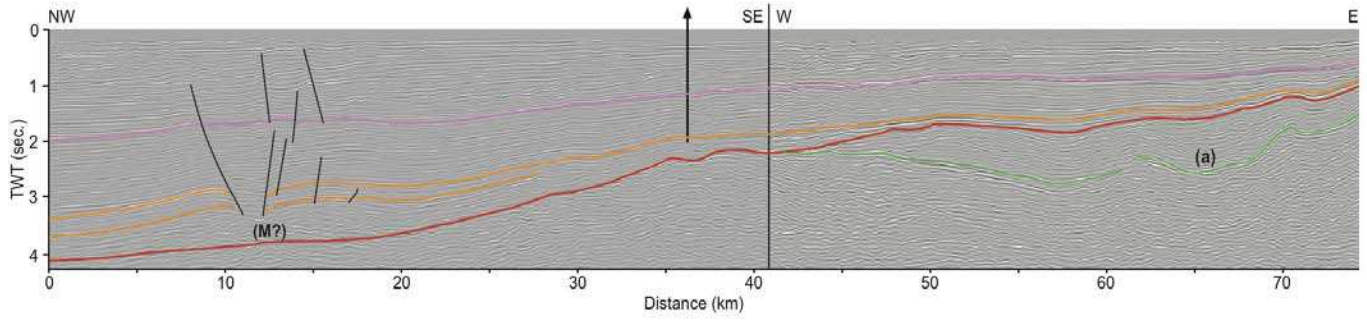


Figure 17: Seismic profile of the margin of the Caspian Sea Basin below the Gorgan Plain. Notice the unconformity highlighted in red which is covered by sediments of the South Caspian Sea Basin. A shale ridge structure is marked in red (M?) suggesting that the sediments just on top of the unconformity are probably made of the Oligocene Maykop Formation. The pink horizon corresponds to the near top Mid-Pleistocene, the yellow horizon corresponds to the near top Miocene, the red horizon corresponds to the Late Eocene-Early Oligocene unconformity and the green horizons correspond to the Late Cretaceous.

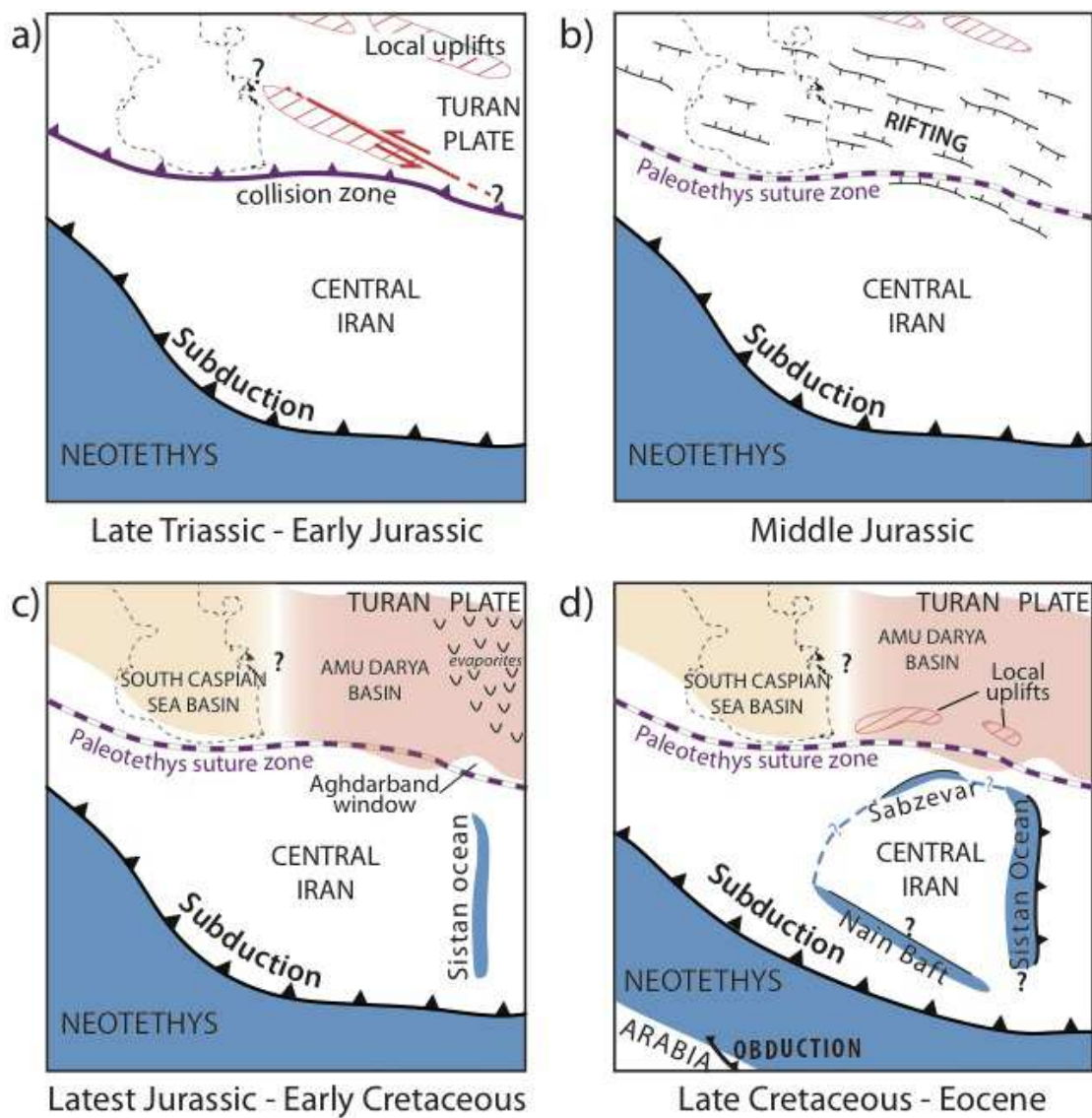


Figure 18: Schematic reconstructions of the geodynamic settings of the region centered on Central Iran during a) the Late Triassic to the Early Jurassic; b) the Middle Jurassic; c) the latest Jurassic to the Early Cretaceous and d) the Late Cretaceous to the Eocene. Reconstructions for the Neotethys and Iran were adapted from Agard et al. (2011); Barrier and Vrielynck (2008).

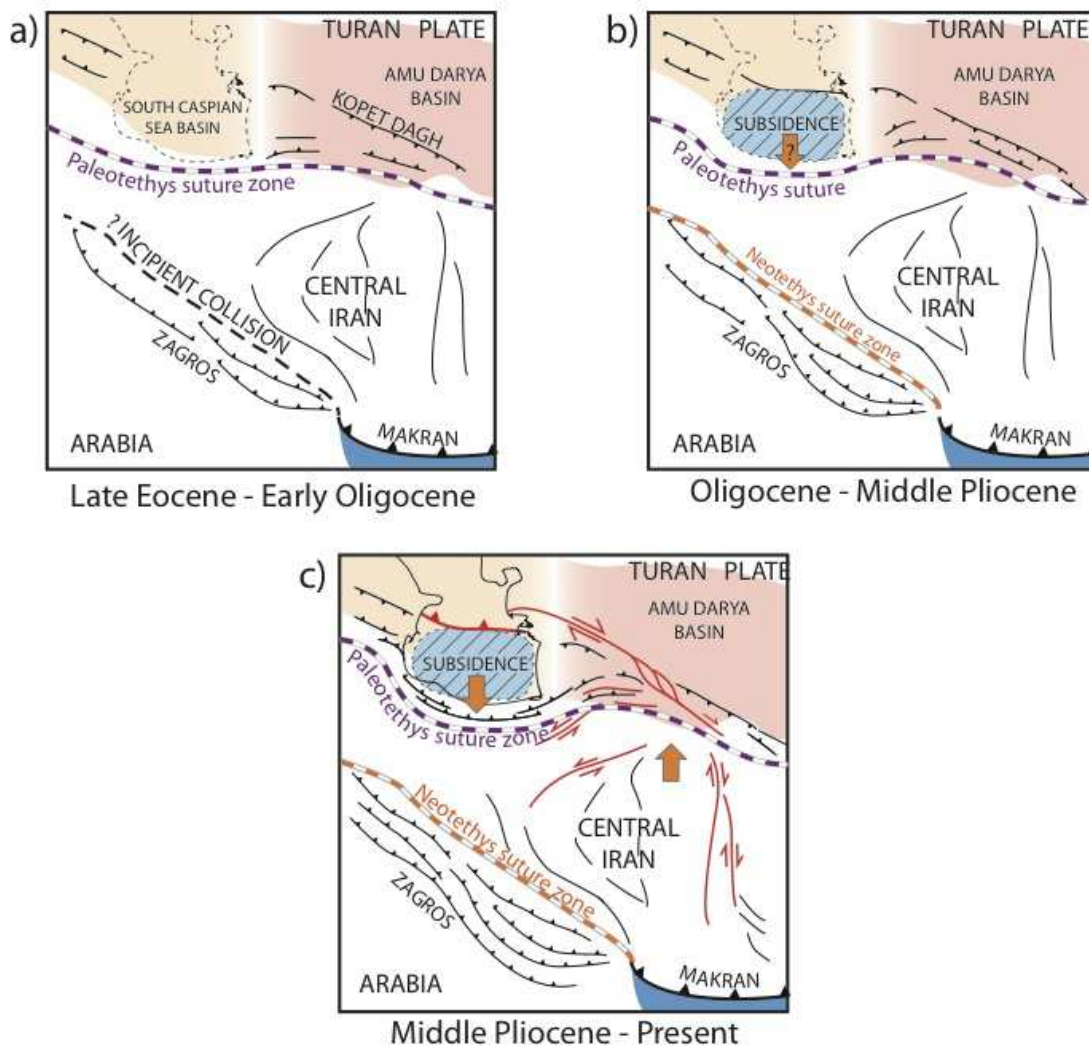


Figure 19: Schematic reconstructions of the geodynamic settings of the region centered on Central Iran during a) the Late Eocene to the Early Oligocene; b) the Oligocene to the Middle Pliocene and c) the Late Pliocene to the present-day. Reconstructions for the Neotethys and Iran were adapted from Agard et al. (2011); Barrier and Vrielynck (2008).