



HAL
open science

Casimir-Lifshitz force out of thermal equilibrium between dielectric gratings

Antonio Noto, Riccardo Messina, Brahim Guizal, Mauro Antezza

► **To cite this version:**

Antonio Noto, Riccardo Messina, Brahim Guizal, Mauro Antezza. Casimir-Lifshitz force out of thermal equilibrium between dielectric gratings. *Physical Review A: Atomic, molecular, and optical physics* [1990-2015], 2014, 90, pp.022120. 10.1103/PhysRevA.90.022120 . hal-01058753

HAL Id: hal-01058753

<https://hal.science/hal-01058753v1>

Submitted on 12 Oct 2020

HAL is a multi-disciplinary open access archive for the deposit and dissemination of scientific research documents, whether they are published or not. The documents may come from teaching and research institutions in France or abroad, or from public or private research centers.

L'archive ouverte pluridisciplinaire **HAL**, est destinée au dépôt et à la diffusion de documents scientifiques de niveau recherche, publiés ou non, émanant des établissements d'enseignement et de recherche français ou étrangers, des laboratoires publics ou privés.

Casimir-Lifshitz force out of thermal equilibrium between dielectric gratingsAntonio Noto,^{1,2,3} Riccardo Messina,^{1,2} Brahim Guizal,^{1,2} and Mauro Antezza^{1,2,4}¹*Université Montpellier 2, Laboratoire Charles Coulomb UMR 5221, F-34095, Montpellier, France*²*CNRS, Laboratoire Charles Coulomb UMR 5221, F-34095, Montpellier, France*³*Dipartimento di Fisica e Chimica dell'Università degli Studi di Palermo and CNISM, Via Archirafi 36, I-90123 Palermo, Italy*⁴*Institut Universitaire de France 103, bd Saint-Michel, F-75005 Paris, France*

(Received 3 June 2014; published 25 August 2014)

We calculate the Casimir-Lifshitz pressure in a system consisting of two different one-dimensional dielectric lamellar gratings having two different temperatures and immersed in an environment having a third temperature. The calculation of the pressure is based on the knowledge of the scattering operators, deduced using the Fourier modal method. The behavior of the pressure is characterized in detail as a function of the three temperatures of the system as well as the geometrical parameters of the two gratings. We show that the interplay between nonequilibrium effects and geometrical periodicity offers a rich scenario for the manipulation of the force. In particular, we find regimes where the force can be strongly reduced for large ranges of temperatures. Moreover, a repulsive pressure can be obtained, whose features can be tuned by controlling the degrees of freedom of the system. Remarkably, the transition distance between attraction and repulsion can be decreased with respect to the case of two slabs, implying an experimental interest for the observation of repulsion.

DOI: [10.1103/PhysRevA.90.022120](https://doi.org/10.1103/PhysRevA.90.022120)

PACS number(s): 12.20.-m, 42.79.Dj, 42.50.Ct, 42.50.Lc

I. INTRODUCTION

Casimir-Lifshitz force in an interaction originating from the fluctuations of the electromagnetic field and existing between any couple of polarizable bodies. It was first theoretically derived by Casimir in 1948 [1,2] in the idealized configuration of two perfectly conducting parallel plates at zero temperature. Later, Lifshitz and collaborators generalized the calculation to the case of bodies having arbitrary optical properties and of finite temperature [3]. The Casimir-Lifshitz interaction, experimentally verified for several different geometries [4], results from two contributions, one originating from vacuum fluctuations and present also at zero temperature, the other one from purely thermal fluctuations. The latter becomes relevant when the distance separating the bodies is larger than the thermal wavelength $\lambda_T = \hbar c/k_B T$, of the order of $8 \mu\text{m}$ at ambient temperature. This explains why it has been only very recently experimentally observed at thermal equilibrium [5].

Nevertheless, the situation completely changes out of thermal equilibrium. It was first theoretically predicted in 2005 that the atom-surface interaction (usually referred to as Casimir-Polder force) is qualitatively and quantitatively modified with respect to thermal equilibrium [6,7]. New power-law behaviors appear, the force can turn into repulsive (being only attractive at thermal equilibrium), and it is strongly tunable by modifying the temperatures involved in the system. This prediction was verified in 2007, providing the first experimental observation of thermal effects [8]. These results paved the way to a renewed interest in Casimir-Lifshitz effects out of thermal equilibrium. In fact, this effect was studied for two slabs [9,10] and in the presence of atoms [11–16], and more recently several different approaches have been developed to deal with the problem of the force out of thermal equilibrium and heat transfer between two [17–24] or more [25–27] arbitrary bodies. The physics of the electromagnetic field out of thermal equilibrium has also stimulated the study of other effects, such as the manipulation of atomic populations [28,29] and entanglement [30,31].

In parallel with the interest in the absence of thermal equilibrium, Casimir-Lifshitz interactions have been studied in several different geometries, with particular interest in the sphere-plane configuration, the most studied experimentally. More recently, nanostructured surfaces have been theoretically considered in the contexts of both force [32–35] and heat transfer [36,37]. Experimentally, the force has been measured between a sphere and a dielectric [38,39] or metallic [40] grating.

The problem we address here is the calculation of the Casimir-Lifshitz force out of thermal equilibrium in the presence of dielectric gratings, in order to study the combination of nonequilibrium and geometrical effects. In particular we consider a system made of two different gratings having different temperatures, immersed in an environmental bath at a third temperature. Our calculations can be relevant both to imagine new experiments measuring the Casimir-Lifshitz force out of thermal equilibrium and in the more general context of the manipulation of the force in micro- and nanoelectromechanical systems [41,42].

The paper is structured as follows. In Sec. II we introduce our physical system and provide the notation and main definitions. In Sec. III we solve the problem of the scattering upon a single one-dimensional (1D) lamellar dielectric grating using the Fourier modal method (FMM). In Sec. IV, we apply these results in order to calculate the force out of thermal equilibrium between two different gratings. We explore the behavior of the force as a function of the three temperatures and of the geometrical parameters of the gratings, with specific attention to the appearance and features of repulsion. We finally give in Sec. V some conclusive remarks.

II. PHYSICAL SYSTEM AND FORCE OUT OF THERMAL EQUILIBRIUM

We start by describing the system studied in this paper. We address the Casimir-Lifshitz force between two dielectric gratings immersed in vacuum ($\varepsilon = 1$) in the geometrical configuration shown in Fig. 1. We label the two gratings with

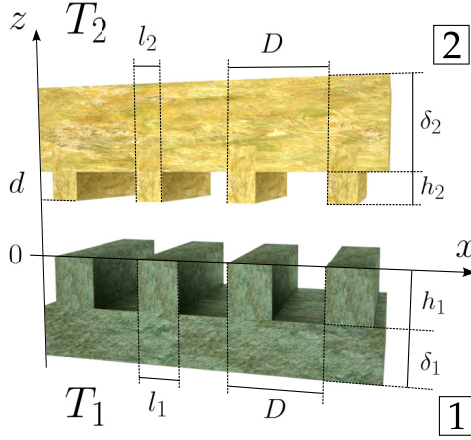


FIG. 1. (Color online) Geometry of the system. Two gratings, labeled with 1 and 2, at a distance d , always assumed to be positive. The gratings, in general made of different materials, are infinite in the xy plane, and periodic in the x direction with the same period D . They have corrugation depths h_i ($i = 1, 2$), thicknesses δ_i , and lengths of the upper part of the grating l_i . This defines the filling factors $f_i = l_i/D$. The two gratings have different constant temperatures T_1 and T_2 , and are immersed in an environment having a third temperature T_e .

an index i taking values 1 and 2. The gratings are infinite in x and y directions, with periodicity along the x axis. Their distance d is defined in Fig. 1 and can only take positive values (i.e., a plane $z = \bar{z}$ must exist separating the two bodies). The gratings share the same period D and have corrugation depth h_i , permittivities $\varepsilon_i(\omega)$ in the homogeneous zone, permittivities $\varepsilon_i(x, \omega)$ along the grating zone having thickness δ_i , and filling factors $f_i = l_i/D$ (l_i is defined as in Fig. 1).

Our physical system is considered in a configuration out of thermal equilibrium (OTE). This means that each body is supposed to be in local thermal equilibrium with a constant temperature T_i . We also assume that the two gratings are immersed in a radiation bath coming from bounding walls far from the system and having temperature T_e , in general different from the temperatures of the two gratings (see also [19]). The whole system is considered in a stationary regime so that the three temperatures involved are constant in time.

In [18, 19, 27], this assumption has been used to characterize the properties of the source fields (the ones emitted by the two bodies and coming from the surrounding walls) in terms of field correlation functions. This procedure is based on a mode decomposition of the fields, each mode $(\omega, \mathbf{k}, p, \phi)$ being identified by the direction of propagation $\phi = +, -$ along the z axis, the polarization index p [assuming the values $p = 1, 2$ which respectively correspond to transverse electric (TE) and transverse magnetic (TM) modes], the frequency ω and the transverse wave vector $\mathbf{k} = (k_x, k_y)$. In this description, the z component of the wave vector k_z is a dependent variable defined as

$$k_z = \sqrt{\frac{\omega^2}{c^2} - \mathbf{k}^2}. \quad (1)$$

Based on this mode decomposition, the trace of a given operator \mathcal{O} is defined as

$$\text{Tr } \mathcal{O} = \sum_p \int \frac{d^2\mathbf{k}}{(2\pi)^2} \int_0^{+\infty} \frac{d\omega}{2\pi} \langle p, \mathbf{k} | \mathcal{O} | p, \mathbf{k} \rangle. \quad (2)$$

The correlation functions of the field have been expressed as a function of the reflection and transmission operators \mathcal{R} and \mathcal{T} associated with each body (see Sec. III for more details). Using these correlation functions, the OTE Casimir-Lifshitz force acting on body 1 can be cast in the following form [19, 27] (the distance dependence is implicit):

$$F_{1z} = F_{1z}^{(\text{eq})}(T_1) + \Delta(T_1, T_2, T_e), \quad (3)$$

where $F_{1z}^{(\text{eq})}(T_1)$ is the force acting on body 1 at thermal equilibrium at its temperature T_1 . This equilibrium contribution reads

$$F_{1z}^{(\text{eq})} = -2 \text{Re} \text{Tr} [k_z \omega^{-1} N(\omega, T) \times (U^{(12)} \mathcal{R}^{(1)+} \mathcal{R}^{(2)-} + U^{(21)} \mathcal{R}^{(2)-} \mathcal{R}^{(1)+})], \quad (4)$$

while the nonequilibrium term is

$$\begin{aligned} \Delta(T_1, T_2, T_e) = & -\hbar \text{Tr} [(n_{e1} \{ U^{(21)} \mathcal{T}^{(2)-} \mathcal{P}_{-1}^{(\text{pw})} \mathcal{T}^{(2)-\dagger} U^{(21)\dagger} \\ & \times [f_2(\mathcal{R}^{(1)+}) - \mathcal{T}^{(1)-\dagger} \mathcal{P}_2^{(\text{pw})} \mathcal{T}^{(1)-}] \\ & + (U^{(12)} \mathcal{T}^{(1)+} \mathcal{P}_{-1}^{(\text{pw})} \mathcal{T}^{(1)+\dagger} U^{(12)\dagger} - \mathcal{P}_{-1}^{(\text{pw})}) \\ & \times f_2(\mathcal{R}^{(2)-}) + (\mathcal{R}^{(2)-} \mathcal{P}_{-1}^{(\text{pw})} \mathcal{R}^{(2)-\dagger} \\ & - \mathcal{R}^{(12)-} \mathcal{P}_{-1}^{(\text{pw})} \mathcal{R}^{(12)-\dagger}) \mathcal{P}_2^{(\text{pw})} \} + n_{21} U^{(21)} \\ & \times [f_{-1}(\mathcal{R}^{(2)-}) - \mathcal{T}^{(2)-} \mathcal{P}_{-1}^{(\text{pw})} \mathcal{T}^{(2)-\dagger}] U^{(21)\dagger} \\ & \times [f_2(\mathcal{R}^{(1)+}) - \mathcal{T}^{(1)-\dagger} \mathcal{P}_2^{(\text{pw})} \mathcal{T}^{(1)-})]. \end{aligned} \quad (5)$$

In the equations above we have introduced the thermal population,

$$N(\omega, T) = \frac{\hbar\omega}{2} \coth\left(\frac{\hbar\omega}{2k_B T}\right) = \hbar\omega \left[\frac{1}{2} + n(\omega, T)\right], \quad (6)$$

with

$$n(\omega, T) = \frac{1}{e^{\frac{\hbar\omega}{k_B T}} - 1}, \quad (7)$$

and the population differences $n_{ij} = n(\omega, T_i) - n(\omega, T_j)$. Moreover we have defined the auxiliary functions,

$$f_\alpha(\mathcal{R}) = \begin{cases} \mathcal{P}_{-1}^{(\text{pw})} - \mathcal{R} \mathcal{P}_{-1}^{(\text{pw})} \mathcal{R}^\dagger + \mathcal{R} \mathcal{P}_{-1}^{(\text{ew})} - \mathcal{P}_{-1}^{(\text{ew})} \mathcal{R}^\dagger & \alpha = -1, \\ \mathcal{P}_2^{(\text{pw})} + \mathcal{R}^\dagger \mathcal{P}_2^{(\text{pw})} \mathcal{R} + \mathcal{R}^\dagger \mathcal{P}_2^{(\text{ew})} + \mathcal{P}_2^{(\text{ew})} \mathcal{R} & \alpha = 2, \end{cases} \quad (8)$$

and the operators,

$$U^{(12)} = \sum_{n=0}^{+\infty} (\mathcal{R}^{(1)+} \mathcal{R}^{(2)-})^n = (1 - \mathcal{R}^{(1)+} \mathcal{R}^{(2)-})^{-1}, \quad (9)$$

$$U^{(21)} = \sum_{n=0}^{+\infty} (\mathcal{R}^{(2)-} \mathcal{R}^{(1)+})^n = (1 - \mathcal{R}^{(2)-} \mathcal{R}^{(1)+})^{-1}, \quad (10)$$

$$\mathcal{R}^{(12)-} = \mathcal{R}^{(1)-} + \mathcal{T}^{(1)-} U^{(21)} \mathcal{R}^{(2)-} \mathcal{T}^{(1)+}. \quad (11)$$

Finally, in (5) we have introduced the projection operators,

$$\langle p, \mathbf{k} | \mathcal{P}_n^{(pw/ew)} | p', \mathbf{k}' \rangle = k_z^n \langle p, \mathbf{k} | \Pi^{(pw/ew)} | p', \mathbf{k}' \rangle, \quad (12)$$

where $\delta_{\phi\phi'}$ is the Kronecker delta and being $\Pi^{(pw)}$ [$\Pi^{(ew)}$] the projector on the propagative ($k < \omega/c$) [evanescent ($k > \omega/c$)] sector.

III. FMM THEORY AND GRATING SCATTERING MATRIXES

In order to calculate the force, we now need to compute the reflection and transmission operators associated with a lamellar 1D grating. This will be achieved in the framework of the Fourier modal method [43]. In the following, we implement this method for a grating of finite size along the z axis (see Fig. 2) in order to take into account finite-size effects on the Casimir-Lifshitz force. Moreover, we solve the scattering problem directly in TE and TM components, in order to be coherent with the formalism presented in Sec. II.

Let us consider a system composed of a grating like the one in Fig. 2. The space is divided in four zones: zone 1 ($z < 0$), zone 2 ($0 < z < h$), zone 3 ($h < z < h + \delta$), and zone 4 ($z > h + \delta$). While zones 1, 3, and 4 are homogeneous with dielectric permittivities $\varepsilon_i(\omega)$ ($i = 1, 3, 4$), zone 2 represents the grating, with a dielectric function $\varepsilon_2(x, \omega)$, periodic in x with period D . In each zone, every physical quantity is independent of y .

We first decompose the electric field in any zone with respect to frequency (only positive frequencies will be used):

$$\mathbf{E}^{(i)}(\mathbf{R}, t) = 2 \operatorname{Re} \left[\int_0^{+\infty} \frac{d\omega}{2\pi} e^{-i\omega t} \mathbf{E}^{(i)}(\mathbf{R}, \omega) \right]. \quad (13)$$

In virtue of the translational invariance of our system along the y axis and of the periodicity along the x axis, we will employ a Fourier decomposition of any x -dependent quantity. As a consequence, the wave vector component k_x will be replaced by a new mode variable,

$$k_{x,n} = k_x + \frac{2\pi}{D}n, \quad (14)$$

with k_x taking values in the first Brillouin zone $[-\pi/D, \pi/D]$ and n assuming all integer values.

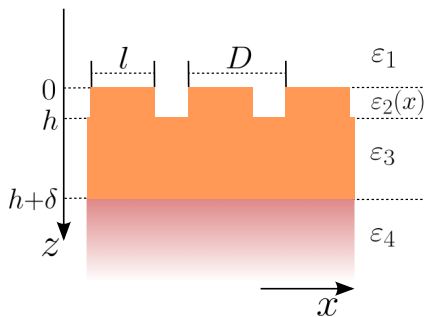


FIG. 2. (Color online) Geometry of the FMM calculation. We consider one grating with interface $z = 0$, corrugation depth h , and underlying thickness δ . This defines four zones (see text) with four (in general different) dielectric permittivities. The period is D and the filling factor is defined as $f = l/D$.

A. Homogeneous media

In any homogeneous zone, we can use a standard Rayleigh expansion for the component of the field at frequency ω ,

$$\mathbf{E}^{(i)}(\mathbf{R}, \omega) = \sum_{p, \phi} \int_{-\frac{\pi}{D}}^{\frac{\pi}{D}} \frac{dk_x}{2\pi} \sum_{n \in \mathbb{Z}} \int_{-\infty}^{+\infty} \frac{dk_y}{2\pi}, \quad (15)$$

$$\times e^{i\mathbf{K}_n^{(i)\phi} \cdot \mathbf{R}} \hat{\epsilon}_p^{(i)\phi}(\mathbf{k}_n, \omega) E_p^{(i)\phi}(\mathbf{k}_n, \omega),$$

where the wave vectors are defined as ($n \in \mathbb{Z}$),

$$\mathbf{K}_n^{(i)\phi} = (\mathbf{k}_n, \phi k_{z,n}^{(i)}), \quad \mathbf{k}_n = (k_{x,n}, k_y), \quad (16)$$

and $k_{z,n}^{(i)}$ is the z component of the wave vector inside each medium,

$$k_{z,n}^{(i)} = \sqrt{\varepsilon_i(\omega) \frac{\omega^2}{c^2} - \mathbf{k}_n^2}. \quad (17)$$

The unit polarization vectors appearing in Eq. (15) are defined as

$$\hat{\epsilon}_{\text{TE}}^{(i)\phi}(\mathbf{k}_n, \omega) = \frac{1}{k_n} (-k_y \hat{\mathbf{x}} + k_{x,n} \hat{\mathbf{y}}), \quad (18)$$

$$\hat{\epsilon}_{\text{TM}}^{(i)\phi}(\mathbf{k}_n, \omega) = \frac{c}{\omega \sqrt{\varepsilon_i(\omega)}} (-k_n \hat{\mathbf{z}} + \phi k_{z,n}^{(i)} \hat{\mathbf{k}}_n). \quad (19)$$

For convenience, we assign from now on the following labels to the field amplitudes in the three homogeneous zones (the dependence on p , \mathbf{k}_n , and ω is implicit):

$$\begin{aligned} E^{(1)+} &= I, & E^{(1)-} &= R, \\ E^{(3)+} &= C, & E^{(3)-} &= C', \\ E^{(4)+} &= T, & E^{(4)-} &= I', \end{aligned} \quad (20)$$

where I , R , and T represent the incoming, reflected, and transmitted field amplitudes, respectively. The amplitude I' is associated with a possible incoming field coming from the other side of the body. Its presence guarantees both the full symmetry of the calculation and the possibility to derive at the same time the reflection and transmission operators \mathcal{R}^{\pm} and \mathcal{T}^{\pm} .

The magnetic field in any zone can be easily deduced from Maxwell's equations and it reads,

$$\mathbf{B}^{(i)}(\mathbf{R}, \omega) = \frac{\sqrt{\varepsilon_i(\omega)}}{c} \sum_{p, \phi} \int_{-\frac{\pi}{D}}^{\frac{\pi}{D}} \frac{dk_x}{2\pi} \sum_{n \in \mathbb{Z}} \int_{-\infty}^{+\infty} \frac{dk_y}{2\pi}, \quad (21)$$

$$\times e^{i\mathbf{K}_n^{(i)\phi} \cdot \mathbf{R}} (-1)^p \hat{\epsilon}_{S(p)}^{(i)\phi}(\mathbf{k}_n, \omega) E_p^{(i)\phi}(\mathbf{k}_n, \omega),$$

where the function S is defined as $S(1) = 2$ and $S(2) = 1$.

B. Periodic region

We now move to the periodic region (zone 2) where we write an arbitrary frequency component of the field as

$$\mathbf{E}^{(2)}(\mathbf{R}, \omega) = \int_{-\frac{\pi}{D}}^{\frac{\pi}{D}} \frac{dk_x}{2\pi} \sum_{n \in \mathbb{Z}} \int_{-\infty}^{+\infty} \frac{dk_y}{2\pi} e^{i\mathbf{k}_n \cdot \mathbf{r}} \mathbf{E}^{(2)}(z, \mathbf{k}_n, \omega), \quad (22)$$

where $\mathbf{R} = (\mathbf{r}, z)$.

We are now ready to write Maxwell's equations (for our system we have $\partial_t = -i\omega$):

$$\begin{cases} \partial_y E_z - \partial_z E_y = i\omega\mu_0 H_x = ik_0 \tilde{H}_x \\ \partial_z E_x - \partial_x E_z = i\omega\mu_0 H_y = ik_0 \tilde{H}_y \\ \partial_x E_y - \partial_y E_x = i\omega\mu_0 H_z = ik_0 \tilde{H}_z, \end{cases} \quad (23)$$

$$\begin{cases} \partial_y \tilde{H}_z - \partial_z \tilde{H}_y = -i\varepsilon k_0 E_x \\ \partial_z \tilde{H}_x - \partial_x \tilde{H}_z = -i\varepsilon k_0 E_y \\ \partial_x \tilde{H}_y - \partial_y \tilde{H}_x = -i\varepsilon k_0 E_z, \end{cases}$$

where we used $\omega = ck_0$, $\omega\mu_0 = k_0 Z_0$, $\omega\varepsilon_0 = k_0/Z_0$, $Z_0 = \sqrt{\mu_0/\varepsilon_0}$ and defined $\tilde{H}_i = Z_0 H_i$. From (23) we can easily obtain

$$\partial_z \begin{pmatrix} E_x \\ E_y \end{pmatrix} = \begin{pmatrix} -\frac{i}{k_0} \partial_x \frac{1}{\varepsilon(x)} \partial_y & ik_0 + \frac{i}{k_0} \partial_x \frac{1}{\varepsilon(x)} \partial_x \\ -ik_0 - \frac{i}{k_0} \partial_y \frac{1}{\varepsilon(x)} \partial_y & \frac{i}{k_0} \partial_y \frac{1}{\varepsilon(x)} \partial_x \end{pmatrix} \times \begin{pmatrix} \tilde{H}_x \\ \tilde{H}_y \end{pmatrix}, \quad (24)$$

$$\partial_z \begin{pmatrix} \tilde{H}_x \\ \tilde{H}_y \end{pmatrix} = \begin{pmatrix} \frac{i}{k_0} \partial_x \partial_y & -ik_0 \varepsilon(x) - \frac{i}{k_0} \partial_x \partial_x \\ ik_0 \varepsilon(x) + \frac{i}{k_0} \partial_y \partial_y & -\frac{i}{k_0} \partial_y \partial_x \end{pmatrix} \times \begin{pmatrix} E_x \\ E_y \end{pmatrix}. \quad (25)$$

We now employ a Fourier factorization for the fields E and \tilde{H} . Correspondingly, the operator ∂_y is replaced by $i\beta$, β being a scalar, whereas the operator ∂_x is replaced by $i\alpha$, where $\alpha = \text{diag}(k_{x,n})_n$. These replacements allow us to rewrite Maxwell's equations of our system in a more compact form:

$$\partial_z \mathcal{E} = \begin{pmatrix} \frac{i\beta}{k_0} \alpha \llbracket \varepsilon \rrbracket^{-1} & ik_0 \mathbb{1} - \frac{i\alpha}{k_0} \llbracket \varepsilon \rrbracket^{-1} \alpha \\ -ik_0 \mathbb{1} + \frac{i\beta^2}{k_0} \llbracket \varepsilon \rrbracket^{-1} & -\frac{i\beta}{k_0} \llbracket \varepsilon \rrbracket^{-1} \alpha \end{pmatrix} \tilde{\mathcal{H}} = \mathbb{F} \tilde{\mathcal{H}}, \quad (26)$$

$$\partial_z \tilde{\mathcal{H}} = \begin{pmatrix} -\frac{i\beta}{k_0} \alpha & -ik_0 \llbracket \varepsilon \rrbracket + \frac{i\alpha^2}{k_0} \\ ik_0 \llbracket \frac{1}{\varepsilon} \rrbracket^{-1} - \frac{i\beta^2}{k_0} & \frac{i\beta}{k_0} \alpha \end{pmatrix} \mathcal{E} = \mathbb{G} \mathcal{E}, \quad (27)$$

where for an arbitrary field \mathbf{U} we have introduced the decomposition,

$$\mathbf{U} = (\{U_x(z, \mathbf{k}_n, \omega)\}_n, \{U_y(z, \mathbf{k}_n, \omega)\}_n)^T, \quad (28)$$

gathering x and y components and denoting with $\{\dots\}_n$ a set of scattering orders. We have also introduced the Toeplitz matrix $\llbracket a \rrbracket$, defined by the relation $\llbracket a \rrbracket_{ij} = a_{i-j}$, a_n being the n th Fourier component of a . We remark that going from Eqs. (24) and (25) to Eqs. (26) and (27) we have used the modified factorization rule introduced in [44].

Of course, in order to exploit numerically the FMM, a truncation has to be made, limiting the number of diffraction orders taken into account. For a given truncation M , this corresponds to keeping $2M + 1$ scattering orders,

$$\{A_n\}_n = (A_{-M}, \dots, A_M), \quad (29)$$

and the size of the corresponding column vector \mathbf{U} is thus $2(2M + 1)$. Based on this truncation, we obtain

$$\partial_z^2 \mathcal{E} = \mathbb{F} \mathbb{G} \mathcal{E} = \mathbb{P} \mathbb{D}^2 \mathbb{P}^{-1} \mathcal{E}, \quad (30)$$

where \mathbb{P} and \mathbb{D}^2 are, respectively, the eigenvectors and eigenvalues $2(2M + 1) \times 2(2M + 1)$ matrixes of the matrix $\mathbb{F} \mathbb{G}$,

$$\mathbb{P} = \begin{pmatrix} \mathbb{P}^{(11)} & \mathbb{P}^{(12)} \\ \mathbb{P}^{(21)} & \mathbb{P}^{(22)} \end{pmatrix}, \quad \mathbb{D} = \begin{pmatrix} \mathbb{D}^{(11)} & \mathbb{0} \\ \mathbb{0} & \mathbb{D}^{(22)} \end{pmatrix}. \quad (31)$$

Then, from Eqs. (26) and (30), we obtain that fields are

$$\begin{aligned} \mathcal{E}(z) &= \mathbb{P}(e^{\mathbb{D}z} \mathcal{A} + e^{-\mathbb{D}z} \mathcal{B}) \\ \tilde{\mathcal{H}}(z) &= \mathbb{P}'(e^{\mathbb{D}z} \mathcal{A} - e^{-\mathbb{D}z} \mathcal{B}), \end{aligned} \quad (32)$$

\mathcal{A} and \mathcal{B} being arbitrary constant vectors, and where $\mathbb{P}' = \mathbb{F}^{-1} \mathbb{P} \mathbb{D}$.

C. Boundary conditions

Based on the knowledge of the electric and magnetic fields in the four regions, we can now impose the continuity of the x and y components of both fields at the three interfaces $z = 0$, $z = h$, and $z = h + \delta$. In the following boundary conditions the values of k_x , k_y , and ω are given. Exploiting this fact we use the generic simplified expression $A_{p,n}$ to refer to the amplitude $A_p(\mathbf{k}_n, \omega)$. Before proceeding in the calculation, we introduce an additional phase factor in the expression of the fields in zones 3 and 4. In particular, in zone 3 we replace $\exp[ik_z^{(i)\phi} z]$ with $\exp[ik_z^{(i)\phi}(z - h)]$, while in zone 4 we replace $\exp[ik_z^{(i)\phi} z]$ with $\exp[ik_z^{(i)\phi}(z - h - \delta)]$. These factors make the calculation easier and can be simply recovered at the end. At the first interface $z = 0$ we have for the x and y components of the electric field (repeated indices are implicitly summed over):

$$\begin{pmatrix} -\frac{k_y}{k_n} (I_{1,n} + R_{1,n}) + \frac{c}{\sqrt{\varepsilon_1} \omega} k_{z,n}^{(1)} \frac{k_{x,n}}{k_n} (I_{2,n} - R_{2,n}) \\ \frac{k_{x,n}}{k_n} (I_{1,n} + R_{1,n}) + \frac{c}{\sqrt{\varepsilon_1} \omega} k_{z,n}^{(1)} \frac{k_y}{k_n} (I_{2,n} - R_{2,n}) \end{pmatrix} = \begin{pmatrix} \mathbb{P}_{nm}^{(11)} (A_{x,m} + B_{x,m}) + \mathbb{P}_{nm}^{(12)} (A_{y,m} + B_{y,m}) \\ \mathbb{P}_{nm}^{(21)} (A_{x,m} + B_{x,m}) + \mathbb{P}_{nm}^{(22)} (A_{y,m} + B_{y,m}) \end{pmatrix}, \quad (33)$$

while for the magnetic field we get

$$\begin{pmatrix} -\frac{c}{\omega} k_{z,n}^{(1)} \frac{k_{x,n}}{k_n} (I_{1,n} - R_{1,n}) - \sqrt{\varepsilon_1} \frac{k_y}{k_n} (I_{2,n} + R_{2,n}) \\ -\frac{c}{\omega} k_{z,n}^{(1)} \frac{k_y}{k_n} (I_{1,n} - R_{1,n}) + \sqrt{\varepsilon_1} \frac{k_{x,n}}{k_n} (I_{2,n} + R_{2,n}) \end{pmatrix} = \begin{pmatrix} \mathbb{P}'_{nm}^{(11)} (A_{x,m} - B_{x,m}) + \mathbb{P}'_{nm}^{(12)} (A_{y,m} - B_{y,m}) \\ \mathbb{P}'_{nm}^{(21)} (A_{x,m} - B_{x,m}) + \mathbb{P}'_{nm}^{(22)} (A_{y,m} - B_{y,m}) \end{pmatrix}. \quad (34)$$

The boundary conditions at $z = h$ give us the following equations for the electric field

$$\left(-\frac{k_y}{k_n}(C_{1,n} + C'_{1,n}) + \frac{c}{\sqrt{\varepsilon_3}\omega}k_{z,n}^{(3)}\frac{k_{x,n}}{k_n}(C_{2,n} - C'_{2,n}) \right) = \left(\mathbb{P}_{nm}^{(11)}(e^{\mathbb{D}_{mm}^{(11)}h}A_{x,m} + e^{-\mathbb{D}_{mm}^{(11)}h}B_{x,m}) + \mathbb{P}_{nm}^{(12)}(e^{\mathbb{D}_{mm}^{(22)}h}A_{y,m} + e^{-\mathbb{D}_{mm}^{(22)}h}B_{y,m}) \right),$$

$$\left(\frac{k_{x,n}}{k_n}(C_{1,n} + C'_{1,n}) + \frac{c}{\sqrt{\varepsilon_3}\omega}k_{z,n}^{(3)}\frac{k_y}{k_n}(C_{2,n} - C'_{2,n}) \right) = \left(\mathbb{P}'_{nm}^{(21)}(e^{\mathbb{D}_{mm}^{(11)}h}A_{x,m} + e^{-\mathbb{D}_{mm}^{(11)}h}B_{x,m}) + \mathbb{P}'_{nm}^{(22)}(e^{\mathbb{D}_{mm}^{(22)}h}A_{y,m} + e^{-\mathbb{D}_{mm}^{(22)}h}B_{y,m}) \right), \quad (35)$$

and the following ones for the magnetic field:

$$\left(-\frac{c}{\omega}k_{z,n}^{(3)}\frac{k_{x,n}}{k_n}(C_{1,n} - C'_{1,n}) - \sqrt{\varepsilon_3}\frac{k_y}{k_n}(C_{2,n} + C'_{2,n}) \right)$$

$$\left(-\frac{c}{\omega}k_{z,n}^{(3)}\frac{k_y}{k_n}(C_{1,n} - C'_{1,n}) + \sqrt{\varepsilon_3}\frac{k_{x,n}}{k_n}(C_{2,n} + C'_{2,n}) \right)$$

$$= \left(\mathbb{P}'_{nm}^{(11)}(e^{\mathbb{D}_{mm}^{(11)}h}A_{x,m} - e^{-\mathbb{D}_{mm}^{(11)}h}B_{x,m}) + \mathbb{P}'_{nm}^{(12)}(e^{\mathbb{D}_{mm}^{(22)}h}A_{y,m} - e^{-\mathbb{D}_{mm}^{(22)}h}B_{y,m}) \right)$$

$$= \left(\mathbb{P}'_{nm}^{(21)}(e^{\mathbb{D}_{mm}^{(11)}h}A_{x,m} - e^{-\mathbb{D}_{mm}^{(11)}h}B_{x,m}) + \mathbb{P}'_{nm}^{(22)}(e^{\mathbb{D}_{mm}^{(22)}h}A_{y,m} - e^{-\mathbb{D}_{mm}^{(22)}h}B_{y,m}) \right). \quad (36)$$

Finally, the boundary conditions at $z = h + \delta$ read

$$\left(-\frac{k_y}{k_n}(e^{ik_{z,n}\delta}C_{1,n} + e^{-ik_{z,n}\delta}C'_{1,n}) + \frac{c}{\sqrt{\varepsilon_3}\omega}k_{z,n}^{(3)}\frac{k_{x,n}}{k_n}(e^{ik_{z,n}\delta}C_{2,n} - e^{-ik_{z,n}\delta}C'_{2,n}) \right) = \left(-\frac{k_y}{k_n}(T_{1,n} + I'_{1,n}) + \frac{c}{\sqrt{\varepsilon_4}\omega}k_{z,n}^{(4)}\frac{k_{x,n}}{k_n}(T_{2,n} - I'_{2,n}) \right),$$

$$\left(\frac{k_{x,n}}{k_n}(e^{ik_{z,n}\delta}C_{1,n} + e^{-ik_{z,n}\delta}C'_{1,n}) + \frac{c}{\sqrt{\varepsilon_3}\omega}k_{z,n}^{(3)}\frac{k_y}{k_n}(e^{ik_{z,n}\delta}C_{2,n} - e^{-ik_{z,n}\delta}C'_{2,n}) \right) = \left(\frac{k_{x,n}}{k_n}(T_{1,n} + I'_{1,n}) + \frac{c}{\sqrt{\varepsilon_4}\omega}k_{z,n}^{(4)}\frac{k_y}{k_n}(T_{2,n} - I'_{2,n}) \right), \quad (37)$$

and the ones for the magnetic field are given by

$$\left(-\frac{c}{\omega}k_{z,n}^{(3)}\frac{k_{x,n}}{k_n}(e^{ik_{z,n}\delta}C_{1,n} - e^{-ik_{z,n}\delta}C'_{1,n}) - \sqrt{\varepsilon_3}\frac{k_y}{k_n}(e^{ik_{z,n}\delta}C_{2,n} + e^{-ik_{z,n}\delta}C'_{2,n}) \right)$$

$$\left(-\frac{c}{\omega}k_{z,n}^{(3)}\frac{k_y}{k_n}(e^{ik_{z,n}\delta}C_{1,n} - e^{-ik_{z,n}\delta}C'_{1,n}) + \sqrt{\varepsilon_3}\frac{k_{x,n}}{k_n}(e^{ik_{z,n}\delta}C_{2,n} + e^{-ik_{z,n}\delta}C'_{2,n}) \right)$$

$$= \left(-\frac{c}{\omega}k_{z,n}^{(4)}\frac{k_{x,n}}{k_n}(T_{1,n} - I'_{1,n}) - \sqrt{\varepsilon_4}\frac{k_y}{k_n}(T_{2,n} + I'_{2,n}) \right)$$

$$= \left(-\frac{c}{\omega}k_{z,n}^{(4)}\frac{k_y}{k_n}(T_{1,n} - I'_{1,n}) + \sqrt{\varepsilon_4}\frac{k_{x,n}}{k_n}(T_{2,n} + I'_{2,n}) \right). \quad (38)$$

D. Scattering matrixes

In the following, we are going to cast Eqs. (33)–(38) under the form,

$$\begin{pmatrix} \mathcal{R} \\ \mathcal{A} \end{pmatrix} = \mathbb{S}_1 \begin{pmatrix} \mathcal{I} \\ \mathcal{B} \end{pmatrix}, \quad \begin{pmatrix} \mathcal{B} \\ \mathcal{C} \end{pmatrix} = \mathbb{S}_2 \begin{pmatrix} \mathcal{A} \\ \mathcal{C}' \end{pmatrix}, \quad \begin{pmatrix} \mathcal{C}' \\ \mathcal{T} \end{pmatrix} = \mathbb{S}_3 \begin{pmatrix} \mathcal{C} \\ \mathcal{I}' \end{pmatrix}. \quad (39)$$

The column vectors \mathcal{A} and \mathcal{B} appearing in this equation gather two vectors defined as in Eq. (28). On the contrary, all the six other column vectors gather the two polarizations of the field under the form,

$$\mathcal{V} = (\{V_1(z, \mathbf{k}_n, \omega)\}_n, \{V_2(z, \mathbf{k}_n, \omega)\}_n)^T. \quad (40)$$

The system of Eq. (39) has to be solved for the unknowns \mathcal{R} , \mathcal{T} , \mathcal{A} , \mathcal{B} , \mathcal{C} , and \mathcal{C}' . The expression of \mathcal{R} and \mathcal{T} as a function of \mathcal{I} and \mathcal{I}' will provide us the desired reflection and transmission operators. The fact that for \mathcal{A} and \mathcal{B} we solve in Cartesian components and not in polarization is not an issue since these appear as mute variables not participating with the scattering operators.

The explicit expression of the \mathbb{S} matrixes appearing in (39) can be obtained by means of algebraic manipulation of Eqs. (33)–(38). The final result is

$$\mathbb{S}_1 = \begin{pmatrix} \mathbb{K}'_1 & -\mathbb{P} \\ \mathbb{L}'_1 & -\mathbb{P}' \end{pmatrix}^{-1} \begin{pmatrix} \mathbb{K}_1 & \mathbb{P} \\ \mathbb{L}_1 & -\mathbb{P}' \end{pmatrix}, \quad (41)$$

$$\mathbb{S}_2 = \begin{pmatrix} \sigma_h^{(2)} & 0 \\ 0 & 1 \end{pmatrix} \begin{pmatrix} -\mathbb{P} & -\mathbb{K}_3 \\ \mathbb{P}' & -\mathbb{L}_3 \end{pmatrix}^{-1} \begin{pmatrix} \mathbb{P} & -\mathbb{K}'_3 \\ \mathbb{P}' & -\mathbb{L}'_3 \end{pmatrix} \begin{pmatrix} \sigma_h^{(2)} & 0 \\ 0 & 1 \end{pmatrix}, \quad (42)$$

$$\mathbb{S}_3 = \begin{pmatrix} \sigma_\delta^{(3)} & 0 \\ 0 & 1 \end{pmatrix} \begin{pmatrix} \mathbb{K}'_3 & \mathbb{K}_4 \\ \mathbb{L}'_3 & \mathbb{L}_4 \end{pmatrix}^{-1} \begin{pmatrix} \mathbb{K}_3 & \mathbb{K}'_4 \\ \mathbb{L}_3 & \mathbb{L}'_4 \end{pmatrix} \begin{pmatrix} \sigma_\delta^{(3)} & 0 \\ 0 & 1 \end{pmatrix}. \quad (43)$$

In these expressions we have defined

$$\mathbb{K}'_i = \begin{pmatrix} -\mathbb{A}_y & -\mathbb{B}_{x,i} \\ \mathbb{A}_x & -\mathbb{B}_{y,i} \end{pmatrix}, \quad \mathbb{L}'_i = \sqrt{\varepsilon_i} \begin{pmatrix} \mathbb{B}_{x,i} & -\mathbb{A}_y \\ \mathbb{B}_{y,i} & \mathbb{A}_x \end{pmatrix}, \quad (44)$$

$$\mathbb{K}_i = \begin{pmatrix} \mathbb{A}_y & -\mathbb{B}_{x,i} \\ -\mathbb{A}_x & -\mathbb{B}_{y,i} \end{pmatrix}, \quad \mathbb{L}_i = \sqrt{\varepsilon_i} \begin{pmatrix} \mathbb{B}_{x,i} & \mathbb{A}_y \\ \mathbb{B}_{y,i} & -\mathbb{A}_x \end{pmatrix},$$

where

$$\begin{aligned} \mathbb{A}_x &= \text{diag} \left(\frac{k_{x,n}}{k_n} \right)_n, & \mathbb{A}_y &= \text{diag} \left(\frac{k_y}{k_n} \right)_n, \\ \mathbb{B}_{x,i} &= \frac{c}{\sqrt{\varepsilon_i \omega}} \text{diag} \left(\frac{k_{x,n}}{k_n} k_{z,n}^{(i)} \right)_n, \\ \mathbb{B}_{y,i} &= \frac{c}{\sqrt{\varepsilon_i \omega}} \text{diag} \left(\frac{k_y}{k_n} k_{z,n}^{(i)} \right)_n. \end{aligned} \quad (45)$$

The symbol $\text{diag}(a_n)_n$ denotes a $(2M+1) \times (2M+1)$ diagonal matrix having diagonal elements $a_{-M}, a_{-M+1}, \dots, a_M$. We have also defined the square matrixes of dimension $2(2M+1)$,

$$\sigma_h^{(2)} \equiv e^{\mathbb{D}h} = \begin{pmatrix} e^{\mathbb{D}^{(11)}h} & \mathbb{0} \\ \mathbb{0} & e^{\mathbb{D}^{(22)}h} \end{pmatrix}, \quad (46)$$

$$\sigma_\delta^{(3)} \equiv \begin{pmatrix} \text{diag}(e^{ik_{z,n}^{(3)}\delta})_n & \mathbb{0} \\ \mathbb{0} & \text{diag}(e^{ik_{z,n}^{(3)}\delta})_n \end{pmatrix}. \quad (47)$$

Using (39) we obtain the final result,

$$\begin{pmatrix} \mathcal{R} \\ \mathcal{T} \end{pmatrix} = \mathbb{S} \begin{pmatrix} \mathcal{I} \\ \mathcal{I}' \end{pmatrix}, \quad (48)$$

where

$$\mathbb{S} = \mathbb{S}_1 \otimes \mathbb{S}_2 \otimes \mathbb{S}_3, \quad (49)$$

having introduced the associative operation $\mathbb{A} = \mathbb{B} \otimes \mathbb{C}$, which for three square matrixes \mathbb{A} , \mathbb{B} , and \mathbb{C} of dimension $4(2M+1)$ is defined as

$$\mathbb{A}_{11} = \mathbb{B}_{11} + \mathbb{B}_{12}(\mathbb{1} - \mathbb{C}_{11}\mathbb{B}_{22})^{-1}\mathbb{C}_{11}\mathbb{B}_{21}, \quad (50)$$

$$\mathbb{A}_{12} = \mathbb{B}_{12}(\mathbb{1} - \mathbb{C}_{11}\mathbb{B}_{22})^{-1}\mathbb{C}_{12}, \quad (51)$$

$$\mathbb{A}_{21} = \mathbb{C}_{21}(\mathbb{1} - \mathbb{B}_{22}\mathbb{C}_{11})^{-1}\mathbb{B}_{21}, \quad (52)$$

$$\mathbb{A}_{22} = \mathbb{C}_{22} + \mathbb{C}_{21}(\mathbb{1} - \mathbb{B}_{22}\mathbb{C}_{11})^{-1}\mathbb{B}_{22}\mathbb{C}_{12}, \quad (53)$$

where each matrix has been decomposed in four square blocks of dimension $2(2M+1)$.

Equation (48) allows one to identify the four blocks of \mathbb{S} as the reflection and transmission operators associated with the two sides of the grating. For example, the block \mathbb{S}_{11} is the coefficient linking the reflected amplitudes \mathcal{R} to the incident ones \mathcal{I} : it then coincides with the reflection operator \mathcal{R}^- for a wave impinging on the grating of Fig. 2 from $z < 0$. By analog reasoning, we write the full \mathbb{S} matrix as

$$\mathbb{S} = \begin{pmatrix} \mathcal{R}^- & \mathcal{T}^- \\ \mathcal{T}^+ & \mathcal{R}^+ \end{pmatrix}. \quad (54)$$

E. Two lamellar gratings

We now need to calculate the reflection and transmission operators associated with the two gratings represented in Fig. 1. As far as grating 1 is concerned, the problem we need to solve is exactly the one presented in this section, with the appropriate values of the geometrical parameters. Concerning grating 2, we need to take into account the fact that its interface is the plane $z = d$ and not $z = 0$. The modification

of the scattering operators with respect to translations has been discussed in [19]. Based on these results, and using the mode expansion used in this work, the \mathcal{R}_2^- operator of grating 2 can be expressed as a function of the $\tilde{\mathcal{R}}_2^-$ derived from FMM as

$$\begin{aligned} \langle p, \mathbf{k}, n, \omega | \mathcal{R}_2^- | p', \mathbf{k}', n', \omega' \rangle \\ = \exp[i(k_{z,n} + k'_{z,n'})d] \langle p, \mathbf{k}, n, \omega | \tilde{\mathcal{R}}_2^- | p', \mathbf{k}', n', \omega' \rangle. \end{aligned} \quad (55)$$

As we will show in the next section, this operator is the only one associated with grating 2 appearing in the expression of the force for our configuration.

IV. NUMERICAL RESULTS

In this section we will present a numerical application concerning the force between two different gratings. Being that both gratings are infinite in the xy plane, we actually calculate the pressure acting on any of them, as discussed in the case of two slabs in [19]. In the first configuration we have chosen both gratings to have period $D = 1 \mu\text{m}$, corrugation depth $h = 1 \mu\text{m}$, and filling factor $f = 0.5$. As shown in Fig. 1, the transition points of the two gratings are aligned, i.e., there is no shift along the x axis. Grating 1 is made of fused silica (SiO_2) and has thickness $\delta_1 = 10 \mu\text{m}$, while grating 2 is made of silicon and has infinite thickness. In order to take into account this point we have imposed $\varepsilon_3 = \varepsilon_4$ in the FMM relative to grating 2 (see Sec. III) and removed in Eq. (5) all the terms proportional to the transmission operators of body 2. Physically, this can be explained by observing that because of the infinite thickness all the radiation coming from the upper side of body 2 is absorbed and does not reach the cavity between the gratings. Both silicon and fused silica have been described by means of optical data taken from [45].

A. The issue of convergence

As anticipated in Sec. III, the numerical use of FMM demands one to choose a truncation order, a problem that will be addressed in this section. We noted before that by choosing a truncation order M in the FMM we obtain as a result reflection operators which are square matrixes of dimension $2(2M+1)$, that is, two polarizations times $2M+1$ diffraction orders. Their typical structure is, thus,

$$\begin{array}{cc} & \begin{array}{cc} \text{TE} & \text{TM} \end{array} \\ \begin{array}{c} \text{TE} \\ \text{TM} \end{array} & \left(\begin{array}{cc|cc} A_{1,1}[n,n'] & A_{1,2}[n,n'] & & \\ A_{2,1}[n,n'] & A_{2,2}[n,n'] & & \end{array} \right), \end{array} \quad (56)$$

where each block $A_{i,j}[n,n']$ is a $(2M+1) \times (2M+1)$ matrix, the indices n and n' running from $-M$ to M .

It is worth stressing that, for a given M , only the elements closer to the center of each block of the matrix (i.e., close to $n = 0$ for each couple of polarizations) are at convergence. Thus, for a given m , we can increase the value of M starting from $M = m$ in order to extract a $2(2m+1) \times 2(2m+1)$ ($m < M$) scattering operator whose elements are at convergence with a given accuracy (in our case of the order of 1%). The operators obtained following this procedure can be used to compute the force using Eqs. (4) and (5). Since these equations imply a trace containing also a sum over the diffraction orders n , the series has to be replaced with a finite sum from $-\bar{m}$ to \bar{m} . The

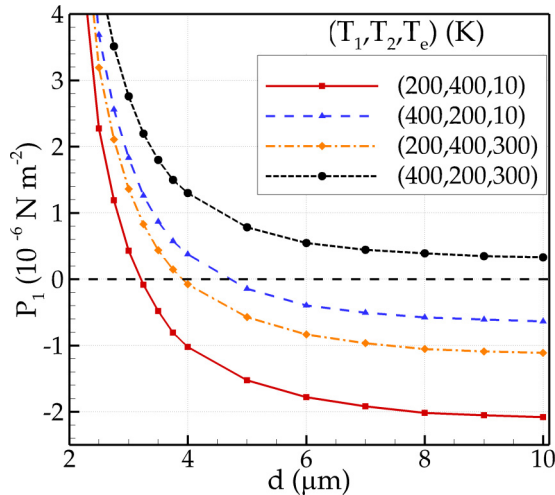


FIG. 3. (Color online) Pressure acting on grating 1 (made of fused silica, having $h_1 = 1 \mu\text{m}$, $\delta_1 = 10 \mu\text{m}$, $D = 1 \mu\text{m}$, and $f_1 = 0.5$) in front of grating 2 (made of silicon, having $h_2 = 1 \mu\text{m}$, infinite thickness, $D = 1 \mu\text{m}$, and $f_2 = 0.5$) as a function of distance d . The four curves correspond to different choices of the three temperatures (T_1, T_2, T_e) (see legend).

value of \bar{m} has to be found by imposing the convergence of the series at a chosen accuracy. Also in this case, we required an accuracy smaller than 1%.

The calculation of the pressure at a given distance requires the evaluation of the traces (4) and (5) at several different values of the wave vector \mathbf{k} and the frequency ω , in order to reach the convergence on the integral on the three variables. We have observed that a single calculation of the trace requires values of \bar{m} of the order of 2 (with peaks going up to 7) and corresponding values of M of the order of 5 (with peaks around 20). A single value of the pressure required a computation time of the order of 16 h on three 3-GHz CPUs.

B. Casimir-Lifshitz force OTE between two different gratings

In the configuration described above, we have calculated the pressure acting on grating 1. To point out the features of our OTE configuration we present in Fig. 3 the pressure as a function of distance for different sets of the temperatures (T_1, T_2, T_e) .

We clearly see that the modification of the three temperatures strongly affects the value of the force. In particular, three of the four curves show a transition from an attractive to a repulsive behavior, not realizable at thermal equilibrium for this configuration. This qualitative difference is a well-known consequence of the absence of thermal equilibrium and it has already been predicted in the case of two parallel slabs [10,19]. We stress that the transition point between attraction and repulsion is a function of the temperatures. For the values chosen, it roughly varies from 3 to 5 μm .

To underline even more the richness of our OTE configuration, we focus on the temperatures $(T_1, T_2, T_e) = (200, 400, 10) \text{ K}$ and compare the pressure to its equivalent at thermal equilibrium at the temperature of body 1, i.e., $T_1 = 200 \text{ K}$. This comparison is presented in Fig. 4. In the same figure we also plot the pressure, both at and out of thermal

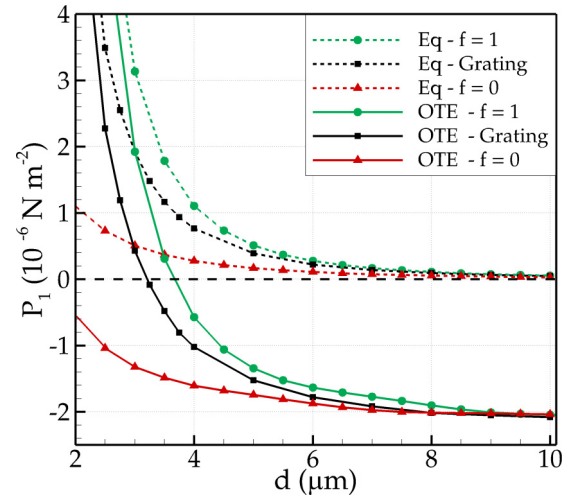


FIG. 4. (Color online) Nonequilibrium (OTE) pressure $[(T_1, T_2, T_e) = (200, 400, 10) \text{ K}$, solid lines] compared to equilibrium pressure ($T = 200 \text{ K}$, dashed lines) for two gratings (black squares), and two slab-slab configurations corresponding to filled gratings ($f = 1$, green circles) and empty ones ($f = 0$, red triangles).

equilibrium, for filling factors $f_1 = f_2 = 1$ (corresponding to *filled* gratings, that is, a 11- μm -thick SiO_2 slab at distance d from an infinite Si slab) and for $f_1 = f_2 = 0$ (corresponding to *empty* gratings, that is a 10- μm -thick SiO_2 slab at distance $d + 2 \mu\text{m}$ from an infinite Si slab).

Apart from the transition to a repulsive behavior, this figure shows that the pressure in the presence of a grating always lies between the two results corresponding to filled and empty ones. Finally, a comparison between Figs. 3 and 4 shows that the asymptotic value of the pressure can be tuned by varying the temperatures to values comparable (apart from their sign) to the pressure at thermal equilibrium at much smaller distances, of the order of 3 μm .

To conclude this section, we compare the grating-grating pressure obtained using FMM to the result coming from

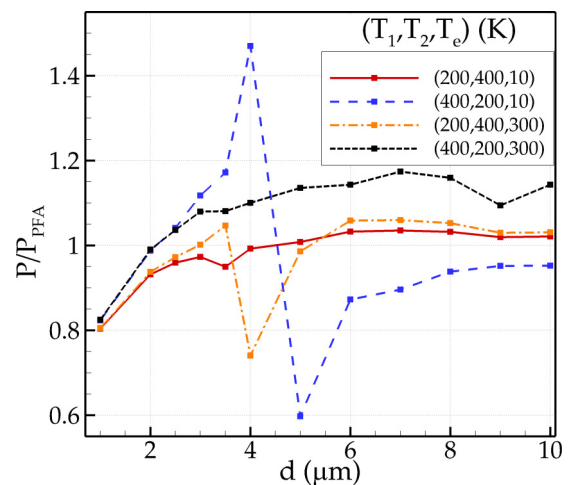


FIG. 5. (Color online) Ratio between the exact pressure and the PFA counterpart [see Eq. (57)], for the same distances and choices of temperatures of Fig. 3.

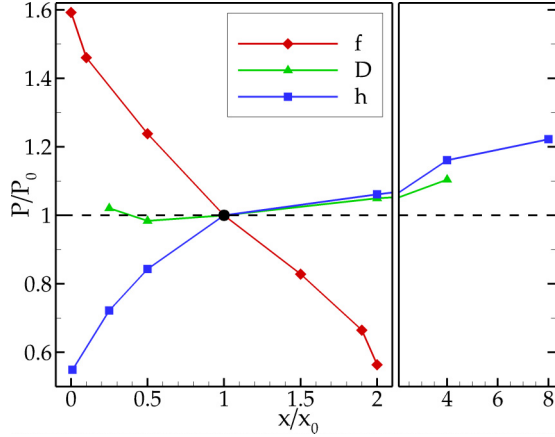


FIG. 6. (Color online) Variation of the pressure between two gratings at $d = 4 \mu\text{m}$ [temperatures $(T_1, T_2, T_e) = (200, 400, 10) \text{K}$] as a function of the geometrical parameters. The reference point (black circle) corresponds to the set of parameters $f_1 = f_2 = 0.5$, $h_1 = h_2 = 1 \mu\text{m}$, $\delta_1 = 10 \mu\text{m}$, infinite δ_2 , $D = 1 \mu\text{m}$. The three curves show the variation of pressure when changing one parameter at a time (red diamonds for the filling factor, green triangles for the period, blue squares for the corrugation depth). On the y axis, the pressures are normalized with respect to the reference one, while on the x axis each varying parameter is normalized with respect to its reference value ($f_0 = 0.5$, $D_0 = 1 \mu\text{m}$, $h_0 = 1 \mu\text{m}$). Note that the plot on the right side continues the one on the left with a modified x scale.

the proximity force approximation (PFA), typically used to deal with complex geometries such as sphere-plane and nanostructured surfaces. In the case of two aligned gratings with equal filling factors $f_1 = f_2 = f$ it reduces to the following weighted sum of the pressures of simple slab-slab configurations [36,39]:

$$P_{1,\text{PFA}}(d) = f P_1^{(\text{ss})}(\delta_1, \delta_2, d) + (1 - f) \times P_1^{(\text{ss})}(\delta_1 - h_1, \delta_2 - h_2, d + h_1 + h_2), \quad (57)$$

where $P_1^{(\text{ss})}(\delta_1, \delta_2, d)$ is the pressure acting on a δ_1 -thick slab at a distance d from a δ_2 -thick slab.

In Fig. 5 we plot the ratio between the exact pressure and the PFA results for the four temperature configurations used in Fig. 3. We observe that PFA provides in our range of distances a description of the pressure with a relative error typically well below 20%. The fact the PFA predicts a change of sign not exactly at the position predicted by the exact calculation results in the existence of a vertical asymptote of the ratio P/P_{PFA} , clearly shown in the blue and orange curves in Fig. 5.

C. Dependence on geometrical parameters

It is now interesting to understand how a modification of the geometrical parameters of the gratings is able to tune the value of the pressure. To this aim we have chosen as a reference the pressure at a distance $d = 4 \mu\text{m}$ for $(T_1, T_2, T_e) = (200, 400, 10) \text{K}$, for which the pressure is around $P_0 = -10^{-6} \text{N m}^{-2}$ (see Fig. 3). Starting from this result, we have modified one by one the values of the filling factor f ,

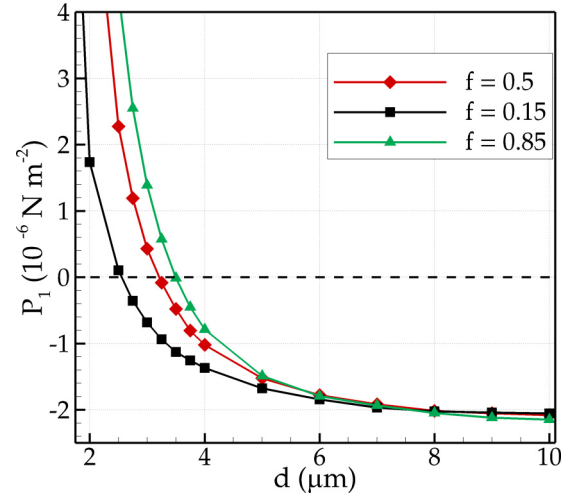


FIG. 7. (Color online) Pressure on grating 1 as a function of distance [temperatures $(T_1, T_2, T_e) = (200, 400, 10) \text{K}$] for three different values of filling factor, all the other geometrical parameters being the reference ones.

period D , corrugation depth h , and calculated the ratio between the modified pressure and the reference P_0 .

The results are shown in Fig. 6, where the pressure ratio is plotted as a function of the ratio between the modified parameter and the reference ones ($f_0 = 0.5$, $D_0 = 1 \mu\text{m}$, and $h_0 = 1 \mu\text{m}$). First, we observe that geometrical modifications can tune the pressure by a factor going from 0.5 to 1.6. In particular, this region can be fully explored by varying the filling factor between the two admitted extreme values $f = 0$ and $f = 1$, i.e., between the two limiting slab-slab

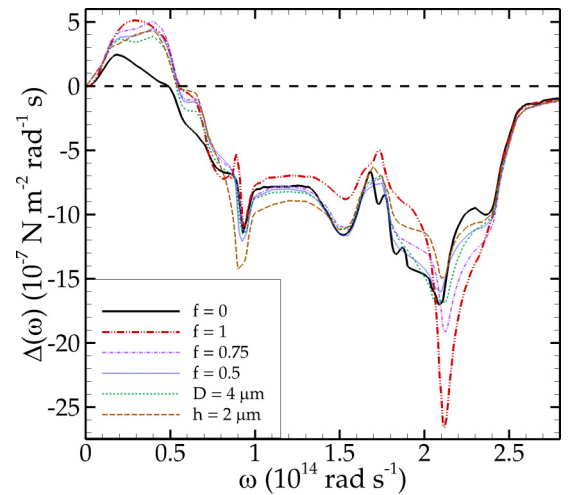


FIG. 8. (Color online) Spectral density of the OTE contribution to the force [defined in Eq. (58)] at $d = 4 \mu\text{m}$ [temperatures $(T_1, T_2, T_e) = (200, 400, 10) \text{K}$]. The solid black line corresponds to filled gratings ($f = 1$), the dot-dot-dashed red line to empty ones ($f = 0$), the dotted blue line to our reference gratings, having $f = 0.5$. In the other curves we vary the geometrical parameters one by one with respect to our reference case: dot-dashed violet line for $f = 0.75$, short-dashed green line for $D = 4 \mu\text{m}$, long-dashed brown line for $h = 2 \mu\text{m}$.

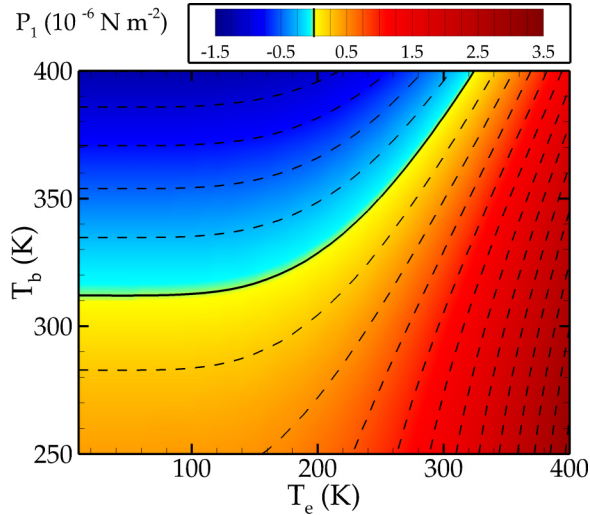


FIG. 9. (Color online) Pressure acting on grating 1 for $d = 4 \mu\text{m}$ and $T_1 = T_2 = T_b$ as a function of T_b and T_e . The solid line corresponds to zero pressure, while the dashed lines to the other contour lines shown in legend.

configurations. Concerning the depth h , it also allows a wide variation of the pressure. We remark that for h going to zero we recover the result corresponding to $f = 1$, that is, a filled grating. On the contrary, for increasing values of h , we see that we approach to a pressure approximately equal to half the value of the pressure for $f = 1$. This can be interpreted by noticing that roughly speaking at some point the corrugation is so deep that only the upper part (half of the total surface, being $f = 0.5$) contributes to the pressure. Differently, the dependence of the pressure on the period D is less pronounced, and absent within our accuracy in the case of a lateral shift between the gratings, not reported in the figure.

As we have shown, the filling factor is a promising tool to tailor the behavior of the pressure. This is further pointed out in Fig. 7, where the distance-dependent pressure is plotted for three different values of f . Whereas the asymptotic value of the pressure is practically the same, we note that for small distances the three curves differ visibly. More interestingly, the attractive-repulsive transition can be tuned approximately from 2.5 to 3.5 μm by changing f from 0.15 to 0.85.

D. Spectral properties of the pressure

Let us focus now on the spectral properties of the pressure, by analyzing the quantity $\Delta(\omega)$, defined as the spectral component at frequency ω of the nonequilibrium contribution to the force (5), that is,

$$\Delta(T_1, T_2, T_e) = \int_0^{+\infty} d\omega \Delta(\omega). \quad (58)$$

Also in this case, we consider our reference point $d = 4 \mu\text{m}$ and $(T_1, T_2, T_e) = (200, 400, 10)$ and compare its spectral distribution with the two slab-slab cases ($f = 0$ and $f = 1$) as well as with some variations of one of the three parameters discussed above.

The result is shown in Fig. 8. We see that no striking spectral difference is present between the configurations compared. Roughly speaking, no new modes (such as the spoof plasmons observed in metal gratings [46,47]) are observed in the spectral region of interest, that is, up to ω of the order of $3 \times 10^{14} \text{ rad s}^{-1}$. The spectral properties for any considered value of the geometrical parameters show small differences with respect to the ones of the two slab-slab configurations.

E. Modulation of the attractive-repulsive transition

As we have seen in Sec. IV C, the filling factor is a promising tool to shift the distance at which the transition between attraction and repulsion takes place. Nevertheless, from an experimental point of view it is more interesting to understand how this transition can be affected by tuning parameters which can be varied during an experiment, such as the three temperatures. This is a topic of this section, where we first consider the case in which the two gratings have a common temperature $T_1 = T_2 = T_b$, in general different from the environmental one T_e . For this configuration, we plot in Fig. 9 the pressure acting on grating 1 in the reference configuration discussed above as a function of T_b and T_e .

The plot is clearly divided in two regions, corresponding to positive and negative values of the pressure, separated by a solid zero-pressure line. Following this line, we see that repulsion can be obtained only for body temperatures larger than approximately 312 K, and that for larger values of T_b

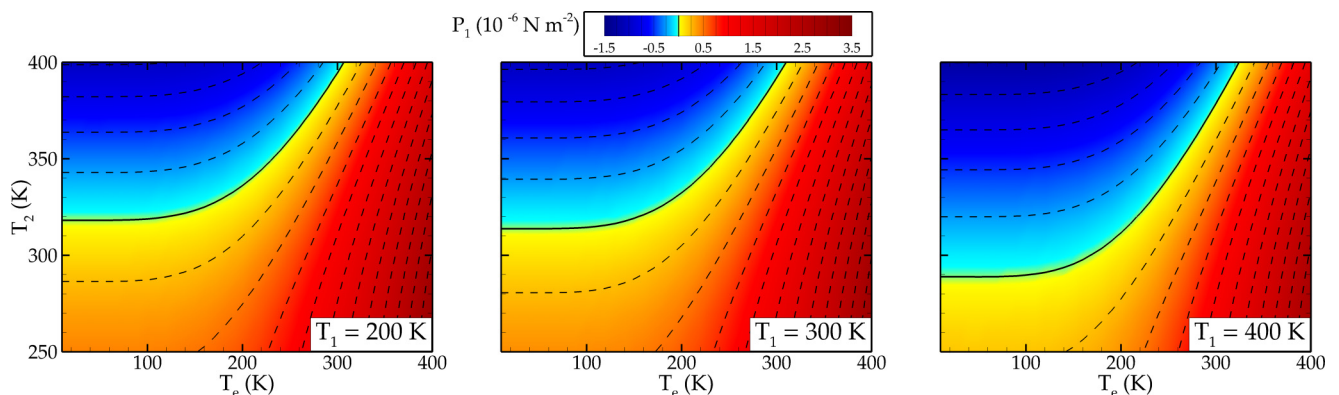


FIG. 10. (Color online) Pressure acting on grating 1 for $d = 4 \mu\text{m}$ as a function of T_2 and T_e for three different values of T_1 . Same convention of Fig. 9 for contour lines.

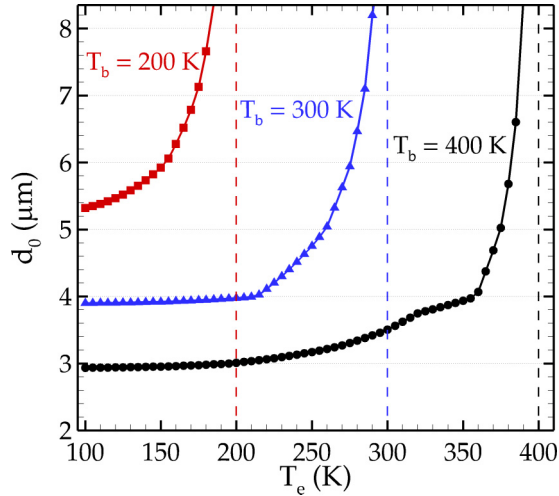


FIG. 11. (Color online) Distance d_0 of attractive-repulsive transition of the pressure as a function of T_e for three different values of $T_1 = T_2 = T_b$.

a larger region of T_e realizes repulsion. Moreover, we stress the remarkable feature that for values of T_b close to 312 K the pressure is approximately zero and almost independent on the environmental temperature for T_e up to approximately 150 K.

In the same spirit of our last analysis we now fix only T_1 at three different values (200, 300, and 400 K) and let T_2 and T_e vary. The pressure as a function of the two temperatures is shown in Fig. 10. We see a behavior similar to the one observed in Fig. 9, that is, the existence of a minimum temperature \bar{T}_2 below which repulsion is impossible, as well as a region where the pressure is close to zero almost independently of T_e . As manifest from Fig. 10, the limit temperature \bar{T}_2 is a decreasing function of T_1 .

Finally, we discuss how the distance d_0 at which the attractive-repulsive transition takes place can be tuned by changing the three temperatures. This is shown in Fig. 11, where we fix $T_1 = T_2 = T_b \in \{200, 300, 400\}$ K and plot d_0 as a function of T_e . As a general remark, when T_e is smaller than T_b the distance d_0 tends to a constant value, which decreases from 5.5 to 3 μm for T_b going from 200 to

400 K. Furthermore, when T_e tends to T_b , i.e., the system approaches thermal equilibrium, d_0 tends to a vertical asymptote, in accordance with the fact that the pressure is always attractive at thermal equilibrium.

V. CONCLUSIONS

We calculated the Casimir-Lifshitz pressure out of thermal equilibrium acting on a 1D dielectric lamellar grating in front of another (in general different) dielectric grating. To this aim, we implemented the Fourier modal method in order to derive the scattering operators associated with each individual grating. Using the general formalism for Casimir-Lifshitz force based on scattering matrixes, we calculated the pressure acting on a finite fused silica grating in the presence of an infinite silicon grating, and also compared our results to the proximity force approximation.

We showed that the combination of geometrical structuring of the surface and absence of thermal equilibrium offers an extremely rich domain of variation both with respect to thermal equilibrium and with respect to planar slabs out of thermal equilibrium. As in the case of two slabs, nonequilibrium is able to produce a repulsive pressure, whose intensity can be tuned by varying the temperatures as well as the several geometrical parameters associated with each grating. We also pointed out the presence of regimes in which the pressure is close to zero and almost independent of the environmental temperature. Remarkably, the variations of all the parameters strongly affect the distance at which the transition between attractive and repulsive pressure occurs, allowing one to obtain transition distances as low as 2.5 μm . This feature is indeed promising for the experimental observation of a repulsive force. Moreover, our results can be relevant in the context of force manipulations on micromechanical systems [42]. Finally, an extension of this study to three-body configurations is also promising toward the manipulation of heat transfer [27,48].

ACKNOWLEDGMENTS

The authors acknowledge financial support from the Julian Schwinger Foundation.

- [1] H. B. G. Casimir, Proc. K. Ned. Akad. Wet. **51**, 793 (1948).
- [2] H. B. G. Casimir-Lifshitz and D. Polder, Phys. Rev. **73**, 360 (1948).
- [3] I. E. Dzyaloshinskii, E. M. Lifshitz, and L. P. Pitaevskii, Adv. Phys. **10**, 165 (1961).
- [4] *Casimir-Lifshitz Physics*, Lecture Notes in Physics Vol. 834, edited by D. Dalvit, P. Milonni, D. Roberts, and F. Da Rosa (Springer-Verlag, Berlin, 2011).
- [5] A. Sushkov *et al.*, Nat. Phys. **7**, 230 (2011).
- [6] M. Antezza, L. P. Pitaevskii, and S. Stringari, Phys. Rev. Lett. **95**, 113202 (2005).
- [7] M. Antezza, J. Phys. A: Math. Gen. **39**, 6117 (2006).
- [8] J. M. Obrecht, R. J. Wild, M. Antezza, L. P. Pitaevskii, S. Stringari, and E. A. Cornell, Phys. Rev. Lett. **98**, 063201 (2007).
- [9] M. Antezza, L. P. Pitaevskii, S. Stringari, and V. B. Svetovoy, Phys. Rev. Lett. **97**, 223203 (2006).
- [10] M. Antezza, L. P. Pitaevskii, S. Stringari, and V. B. Svetovoy, Phys. Rev. A **77**, 022901 (2008).
- [11] M. Antezza, L. P. Pitaevskii, and S. Stringari, Phys. Rev. A **70**, 053619 (2004).
- [12] S. Y. Buhmann and S. Scheel, Phys. Rev. Lett. **100**, 253201 (2008).
- [13] Y. Sherkunov, Phys. Rev. A **79**, 032101 (2009).
- [14] R. O. Behunin and B.-L. Hu, Phys. Rev. A **82**, 022507 (2010).

- [15] R. Behunin and B.-L. Hu, *J. Phys. A: Math. Theor.* **43**, 012001 (2010).
- [16] R. O. Behunin and B.-L. Hu, *Phys. Rev. A* **84**, 012902 (2011).
- [17] G. Bimonte, *Phys. Rev. A* **80**, 042102 (2009).
- [18] R. Messina and M. Antezza, *Europhys. Lett.* **95**, 61002 (2011).
- [19] R. Messina and M. Antezza, *Phys. Rev. A* **84**, 042102 (2011).
- [20] M. Krüger, T. Emig, G. Bimonte, and M. Kardar, *Europhys. Lett.* **95**, 21002 (2011).
- [21] M. Krüger, G. Bimonte, T. Emig, and M. Kardar, *Phys. Rev. B* **86**, 115423 (2012).
- [22] A. W. Rodriguez, O. Ilic, P. Bermel, I. Celanovic, J. D. Joannopoulos, M. Soljačić, and S. G. Johnson, *Phys. Rev. Lett.* **107**, 114302 (2011).
- [23] A. P. McCauley, M. T. Homer Reid, M. Krüger, and S. G. Johnson, *Phys. Rev. B* **85**, 165104 (2012).
- [24] A. W. Rodriguez, M. T. Homer Reid, and S. G. Johnson, *Phys. Rev. B* **86**, 220302(R) (2012).
- [25] M. Krüger, T. Emig, and M. Kardar, *Phys. Rev. Lett.* **106**, 210404 (2011).
- [26] A. W. Rodriguez, M. T. H. Reid, and S. G. Johnson, *Phys. Rev. B* **88**, 054305 (2013).
- [27] R. Messina and M. Antezza, *Phys. Rev. A* **89**, 052104 (2014).
- [28] B. Bellomo, R. Messina, and M. Antezza, *Europhys. Lett.* **100**, 20006 (2012).
- [29] B. Bellomo, R. Messina, D. Felbacq, and M. Antezza, *Phys. Rev. A* **87**, 012101 (2013).
- [30] B. Bellomo and M. Antezza, *Europhys. Lett.* **104**, 10006 (2013).
- [31] B. Bellomo and M. Antezza, *New J. Phys.* **15**, 113052 (2013).
- [32] P. S. Davids, F. Intravaia, F. S. S. Rosa, and D. A. R. Dalvit, *Phys. Rev. A* **82**, 062111 (2010).
- [33] F. Intravaia, P. S. Davids, R. S. Decca, V. A. Aksyuk, D. López, and D. A. R. Dalvit, *Phys. Rev. A* **86**, 042101 (2012).
- [34] J. Lussange, R. Guérout, and A. Lambrecht, *Phys. Rev. A* **86**, 062502 (2012).
- [35] R. Guérout, J. Lussange, H. B. Chan, A. Lambrecht, and S. Reynaud, *Phys. Rev. A* **87**, 052514 (2013).
- [36] J. Lussange, R. Guérout, F. S. S. Rosa, J.-J. Greffet, A. Lambrecht, and S. Reynaud, *Phys. Rev. B* **86**, 085432 (2012).
- [37] R. Guérout, J. Lussange, F. S. S. Rosa, J.-P. Hugonin, D. A. R. Dalvit, J.-J. Greffet, A. Lambrecht, and S. Reynaud, *Phys. Rev. B* **85**, 180301(R) (2012).
- [38] H. B. Chan, Y. Bao, J. Zou, R. A. Cirelli, F. Klemens, W. M. Mansfield, and C. S. Pai, *Phys. Rev. Lett.* **101**, 030401 (2008).
- [39] Y. Bao, R. Guérout, J. Lussange, A. Lambrecht, R. A. Cirelli, F. Klemens, W. M. Mansfield, C. S. Pai, and H. B. Chan, *Phys. Rev. Lett.* **105**, 250402 (2010).
- [40] F. Intravaia *et al.*, *Nat. Commun.* **4**, 2515 (2013).
- [41] H. B. Chan, V. A. Aksyuk, R. N. Kleiman, D. J. Bishop, and F. Capasso, *Science* **291**, 1941 (2001).
- [42] J. Zou, A. W. Rodriguez, M. T. H. Reid, A. P. McCauley, I. I. Kravchenko, T. Lu, Y. Bao, S. G. Johnson, and H. B. Chan, *Nat. Commun.* **4**, 1845 (2013).
- [43] H. Kim, J. Park, and B. Lee, *Fourier Modal Method and its Applications in Computational Nanophotonics* (CRC Press, Boca Raton, 2012).
- [44] G. Granet and B. Guizal, *J. Opt. Soc. Am. A* **13**, 1019 (1996).
- [45] *Handbook of Optical Constants of Solids*, edited by E. Palik (Academic Press, New York, 1998).
- [46] F. J. García-Vidal, L. Martín-Moreno, and J. B. Pendry, *J. Opt. A: Pure Appl. Opt.* **7**, S97 (2005).
- [47] N. Yu *et al.*, *Nat. Mater.* **9**, 730 (2010).
- [48] R. Messina, M. Antezza, and P. Ben-Abdallah, *Phys. Rev. Lett.* **109**, 244302 (2012).