



HAL
open science

A participatory approach to design spatial scenarios of cropping systems and assess their effects on phoma stem canker management at a regional scale

Laure Hossard, Marie-Helene Jeuffroy, Elise Pelzer, X. Pinochet, Véronique Souchère

► To cite this version:

Laure Hossard, Marie-Helene Jeuffroy, Elise Pelzer, X. Pinochet, Véronique Souchère. A participatory approach to design spatial scenarios of cropping systems and assess their effects on phoma stem canker management at a regional scale. *Environmental Modelling and Software*, 2013, 48, pp.17 - 26. 10.1016/j.envsoft.2013.05.014 . hal-01003392

HAL Id: hal-01003392

<https://hal.science/hal-01003392>

Submitted on 29 Jun 2023

HAL is a multi-disciplinary open access archive for the deposit and dissemination of scientific research documents, whether they are published or not. The documents may come from teaching and research institutions in France or abroad, or from public or private research centers.

L'archive ouverte pluridisciplinaire **HAL**, est destinée au dépôt et à la diffusion de documents scientifiques de niveau recherche, publiés ou non, émanant des établissements d'enseignement et de recherche français ou étrangers, des laboratoires publics ou privés.

Manuscript Number: ENVSOFT-D-12-00509R3

Title: A participatory approach to design spatial scenarios of cropping systems and assess their effects on phoma stem canker management at a regional scale

Article Type: Research Paper

Keywords: scenario approach; participatory design; spatial simulation model; phoma stem canker; Winter OilSeed Rape

Corresponding Author: Mrs. Laure Hossard, M.D.

Corresponding Author's Institution: INRA/AgroParisTech

First Author: Laure Hossard, M.D.

Order of Authors: Laure Hossard, M.D.; Marie-Hélène Jeuffroy, PhD; Elise Pelzer, PhD; Xavier Pinochet, PhD; Véronique Souchère, PhD

Abstract: Phoma stem canker is a worldwide disease of oilseed rape, responsible for major economic losses. The main control methods are the use of resistant cultivars, cropping practices and spatial territory organization, involving large-scale spatial processes. A participatory approach can be useful for dealing with this problem, which requires stakeholders' coordination as regards to the timing and spatial layout of cropping practices. The scenario concept is used to plan possible future cropping systems and to reveal their main drivers. In this paper, we test a method to build quantitative land use scenarios and to test them with an existing spatially-explicit model to assess the effects of various scenarios on phoma stem canker management. It was built from previous participatory methods. The method we tested is composed of six steps: stakeholder identification, building with them a common vision of the disease behaviour, collective scenario design, and discussion with stakeholders of model-based scenario evaluations. We tested this method on a regional case study application in France. This application revealed benefits of the method with respect to the diversity of the designed scenarios (predictive and exploratory scenarios; driven by local or global context change) and the diversity of results on phoma stem canker management. Based on this application, recommendations for participation improvement and model acceptance are made: (1) build a partnership with a key local stakeholder; (2) describe and discuss precisely model functioning with stakeholders (avoid the "black box"); and (3) facilitate interpretation of scenario assessment by adapting model outputs. This method, combining a participatory approach (qualitative and quantitative construction of scenarios and their evaluation with an existing model) highlights the potential benefits of involving stakeholders in attempting to solve a local problem, in this case, phoma stem canker management.



*Highlights (for review)

We combined participatory workshops and an available model for a scenario study.

Stakeholder trust in the model required a dialogue on disease-practices interactions.

Stakeholders designed context-dependent predictive and exploratory scenarios.

Model-based scenario evaluation provided information on management options.

The tested method could help the use of existing models for local management issues.

1 1 1. Introduction

2
3
4 2 Phoma stem canker (caused by *Leptosphaeria maculans*) is a worldwide disease of oilseed
5
6 3 rape, responsible for major yield and economic losses (Fitt *et al.*, 2006). In a context of an
7
8 4 increasing oilseed rape area and production in Europe (Eurostat, 2011), controlling this
9
10 5 disease is of prime importance, through (i) a reduction in the pathogen population size and (ii)
11
12 6 a limitation of the selection pressure on pathogen populations (Avirulence Management
13
14 7 concept, Aubertot *et al.*, 2006). The main field control method is the use of resistant cultivars:
15
16 8 partial (quantitative) resistance, reducing the effect of the disease (Delourme *et al.*, 2006) or
17
18 9 specific resistance halting the disease if the pathogen and plant harbour a common resistance
19
20 10 gene (Flor, 1971). Yet specific resistance can be quickly overcome if the pathogen population
21
22 11 adapts when cultivars with this resistance are grown on large areas (Rouxel *et al.*, 2003),
23
24 12 leading to risks of large epidemics and subsequent economic losses because of the breakdown
25
26 13 of the resistance. Other control methods include cropping practices, e.g. sowing date,
27
28 14 fertilization (Aubertot *et al.*, 2004) and tillage practices after winter oilseed rape harvest
29
30 15 (Schneider *et al.*, 2006). However, studying phoma stem canker requires scaling up in both
31
32 16 time and space. Firstly, considering the landscape scale is necessary to control this disease, as
33
34 17 the responsible pathogens are wind-dispersed up to several kilometres (5-8 km; Bokor *et al.*,
35
36 18 1975). Secondly, management strategies have to be planned for the medium term because of
37
38 19 the epidemic cycle of the disease, i.e. the disease in a given year affects its severity in the next
39
40 20 year, as primary inoculum develops on oilseed rape-infected residues (Hall, 1992). According
41
42 21 to Sprague *et al.* (2006), these “integrated strategies” have to consider cropping practices,
43
44 22 cultivar resistance and deployment. While scaling up, control methods may thus involve
45
46 23 distributions of cropping practices over time and space (Lô-Pelzer *et al.*, 2010a), including
47
48 24 genotype deployment (Delourme *et al.*, 2006), but also the proportion of oilseed rape within
49
50 25 the landscape (Fitt *et al.*, 2006). Thus cropping systems enabling sustainable disease control
51
52
53
54
55
56
57
58
59
60
61
62
63
64
65

1
2
3
4
5
6
7
8
9
10
11
12
13
14
15
16
17
18
19
20
21
22
23
24
25
26
27
28
29
30
31
32
33
34
35
36
37
38
39
40
41
42
43
44
45
46
47
48
49
50
51
52
53
54
55
56
57
58
59
60
61
62
63
64
65

26 through an increase in the duration of cultivar resistance efficacy have to be managed on a
27 regional scale to minimize disease incidence, helping to stabilize yields and keep oilseed rape
28 economically competitive. With this aim, a spatially explicit numerical model (SIPPOM-
29 WOSR; Lô-Pelzer *et al.*, 2010a; 2010b) has been developed to support the design and
30 assessment of scenarios of regional cropping system management to allow efficient control of
31 the disease and resistance sustainability.

32 To study potential impacts of spatially distributed cropping systems, land use scenarios can be
33 very useful. Van Notten (2005) describes scenarios as “descriptions of possible futures that
34 reflect different perspectives on past, present and future developments”, consisting of an
35 initial situation and a description of driving forces inducing a specific future (Alcamo &
36 Henrichs, 2008). Scenarios require identification and consideration of the main drivers of
37 future changes (Dockerty *et al.*, 2006). The causes of change can be physical/ecological (e.g.
38 climate change), social and/or economic (e.g. political, urban). Designing, analysing and
39 assessing future scenarios for phoma stem canker management require consideration of the
40 regional context, together with the spatial extent of the disease and the stakeholders’ activities
41 affecting and/or affected by the disease.

42 For issues involving large-scale spatial processes, designing land use scenarios can benefit
43 from a participatory approach: different studies have shown the value of involving
44 stakeholders concerned with the coordination of actions to promote scenarios that are
45 effective with regard to the issue (e.g. on erosive runoff risks, Souchere *et al.*, 2009). Indeed,
46 local stakeholders take or influence decisions for agricultural production and landscape
47 changes (Primdahl, 1999), so it is appropriate for them to propose ways of solving the
48 problems involved (Voinov & Gaddis, 2008); with solutions probably better adapted to local
49 socio-cultural and environmental contexts (Reed, 2008). Cropping system scenarios aimed at
50 controlling a disease without jeopardizing yields or profits are therefore likely to be better

1
2
3
4
5
6
7
8
9
10
11
12
13
14
15
16
17
18
19
20
21
22
23
24
25
26
27
28
29
30
31
32
33
34
35
36
37
38
39
40
41
42
43
44
45
46
47
48
49
50
51
52
53
54
55
56
57
58
59
60
61
62
63
64
65

when designed together with stakeholders, whose actions (e.g. input choice, collected crops, advice) and coordination influence cropping systems.

In participatory studies, scenarios have often been designed by research teams themselves, for the purpose of analysis, evaluation and/or discussion with various stakeholders (e.g. Bacic *et al.*, 2006, Dockerty *et al.*, 2006, Tress & Tress, 2003), sometimes to include stakeholders' preferences (e.g. Tompkins *et al.*, 2008), recommendations (e.g. Lippe *et al.*, 2011) or objectives (e.g. Nidomulu *et al.*, 2007). When scenario design *per se* has been participatory, it has often resulted in qualitative scenarios (e.g. Walz *et al.*, 2007; Kok *et al.*, 2006), i.e. narratives/storylines. Translating these into quantitative scenarios that are required for model simulations can be difficult (Alcamo, 2008). In most studies, this type of conversion has been realized with interactions between stakeholders and modellers occurring prior to modelling, either by co-designing or adapting the modelling framework (e.g. Cornwell, 2004; Therond *et al.*, 2009 respectively). However, few procedures have been described in the literature for a (semi-) quantitative description of key variables by stakeholders. "Fuzzy Cognitive Map" (FCM) is the main semi-quantitative method for participatory scenario development (e.g. Kok, 2009; van Vliet *et al.*, 2010). Although this method can improve the consistency between qualitative scenarios and quantitative models, quantifications by stakeholders are relative and mostly concern the relationships between the key variables instead of the variables themselves. The FCM method thus does not provide direct model parameterization by stakeholders. Two methods for direct estimation of scenario key variables have been proposed recently: Fuzzy Sets (Alcamo, 2008; Dubrovsky *et al.*, 2011) and Bayesian statistical reasoning (Kemp-Benedict, 2010). The Fuzzy Sets approach combines a collective description of qualitative changes by stakeholders with "linguistic variables" (e.g. low/moderate/high change); and individual quantifications of these qualitative changes by stakeholders. These individual opinions, resulting in a distribution of values, are then

1
2
3
4
5
6
7
8
9
10
11
12
13
14
15
16
17
18
19
20
21
22
23
24
25
26
27
28
29
30
31
32
33
34
35
36
37
38
39
40
41
42
43
44
45
46
47
48
49
50
51
52
53
54
55
56
57
58
59
60
61
62
63
64
65

76 combined by the research team to be translated into a single variable value (Dubrovsky *et al.*,
77 2011). This last step can hinder the reliability of this value, as extreme opinions can
78 potentially strongly influence it. This problem is partially solved by the Bayesian statistical
79 reasoning, which provides a probability distribution of variable values (Kemp-Benedict,
80 2010), based on the qualitative description of how a variable differs from its reference value.
81 Thus detailed and accurate reference distributions are crucial. Kemp-Benedict (2010)
82 proposed to use historical data to do so, but the availability of such data clearly depends on
83 the considered issue and its working scale. For local issues (e.g. phoma management), the
84 required level of detail on numerous variables could make this method hardly feasible.

85 In this paper, we aimed at designing, directly with stakeholders, diverse scenarios of cropping
86 systems, numerically-described and linked to possible future contexts and their uncertainty.
87 The objectives of this work were twofold. The first objective was to test on a case study a
88 method for the participatory design of quantitative scenarios of local cropping systems and
89 their assessment with an available model. The second objective was to evaluate this method in
90 order to provide recommendations and guidelines for its improvement. The case study
91 concerned the regional management of phoma stem canker and of the sustainability of a new
92 resistant gene. The Rlm7-gene was used as an example; this gene was introduced in some
93 cultivars in 2004 and is still efficient.

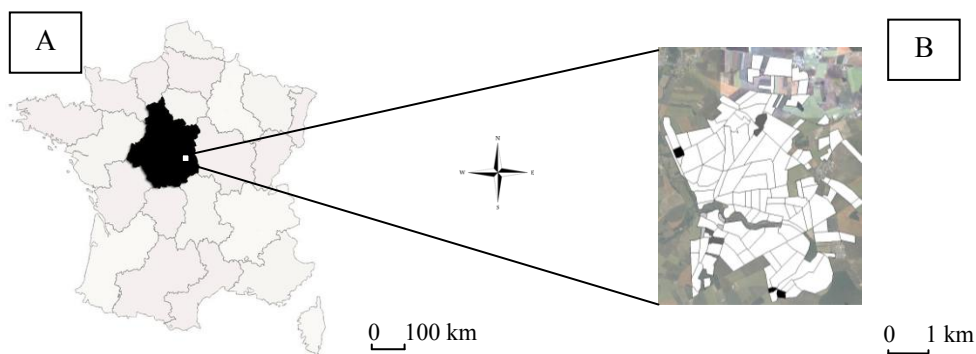
94 2. Materials and methods

95 2.1. Study area

96 The study area was the “Centre region” of France (46°N, 2°E, Figure 1), which is France’s
97 main producer of Winter OilSeed Rape (WOSR), providing 20% of the total French
98 production in 2010 on about 15% of the region’s arable land (Agreste, 2011). A threefold

99 increase in the area cropped with WOSR has occurred in the “Centre region” since the early
100 90s, from 92300 ha in 1990 to 305300 ha in 2010 (Agreste, 2011).

101 This region has experienced numerous phoma stem canker epidemics, which were particularly
102 severe in the late 90s. These large epidemics were due to the rapid loss of a specific resistance
103 efficacy (Rlm1), which has been intensively used in the “Centre region”: registered in 1992
104 and widely introduced in 1995, cultivars with this gene represented more than half of the total
105 acreage of WOSR grown in 1998-1999 (Rouxel *et al.*, 2003).



117 Figure 1. Location of (A) study site (white rectangle) and (B) landscape modelling support
118 (white: cropped lands; black: uncropped lands, i.e. farmhouses; forests; fallow lands)

120 The precise area used for simulations (step 5 of the method, Figure 2) is located in the “Centre
121 region”, around Civray (Figure 1). An area of 121 fields was chosen (Lô-Pelzer *et al.*,
122 2010a), whose landscape characteristics and cropping practices are representative of the
123 region according to local experts (Regional Cetiom: the French technical centre for research
124 and development of oilseed production, hereafter referred as the Specialist Technical
125 Organization). Present-day cropping systems, based on local farmers’ interviews and
126 described in previous studies (Lô-Pelzer *et al.*, 2010) are composed of about 31% of oilseed
127 rape per year throughout the considered area (Table 1) and mean field size is 14 ha. These
128 data are in accordance with statistical data (analyses performed by the authors on the database
129 Agreste – Enquêtes sur les pratiques culturales, 2006) and expert knowledge (interviews of

130 the main stakeholders, see description in 2.2.2 and Table 1). This area can thus be considered
 131 as representative of the region, with respect to cropping systems and landscape characteristics.
 132 This 17 km² zone extends from 46°56'07.05'' to 46°59'42.4''N and from 02°07'10.3'' to
 133 02°11'26.9''E (Figure 1). It is composed of 21 ha of forests (3 plots), 12.4 ha of farmhouses
 134 (2 plots), 9.2 ha of fallows (4 plots) and 1656.8 ha of cropland (112 plots). Five main soil
 135 types have been identified in the studied area by field regional monitoring (189 fields). At
 136 each field was attributed one of the five soil types, according to their regional importance (Lô-
 137 Pelzer *et al.*, 2010a).
 138 Weather data for this zone provided by Météo France were used (weather station located at
 139 46°59'30" N 02°10'54" E). This zone often experiences mild wet autumns, which can favour
 140 phoma stem canker development on WOSR leaves (e.g. in controlled environment
 141 experiments; Huang *et al.*, 2006).

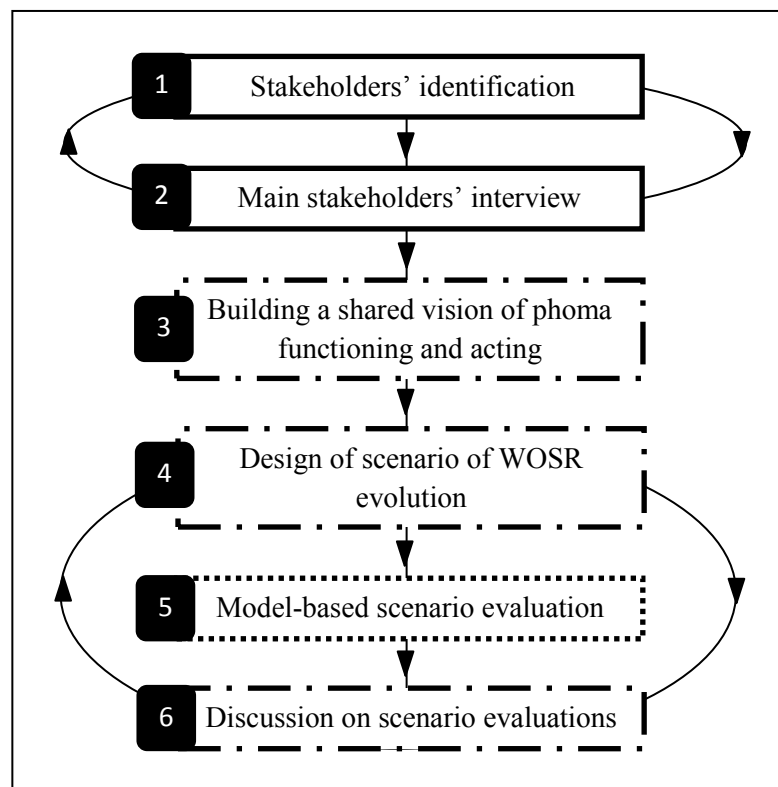
Variable	Value
WOSR frequency	31%
Sowing dates	from 22/08 to 09/09; about 86% of WOSR areas sown between 25/08 and 04/09
Mean sowing densities	44 seeds.m ⁻² for hybrids and 62 seeds.m ⁻² for lines
Nitrogen fertilisation	13% of WOSR areas with organic nitrogen fertilisation at sowing
Cultivars	19% of WOSR areas sown with Rlm7-cultivars; 75% of WOSR areas sown with high level of quantitative resistance cultivars; 5% with cultivars with a low level of quantitative resistance; 1% of WOSR areas sown with susceptible cultivars
Tillage after WOSR harvest	28% of WOSR mouldboard ploughed after harvest; 21% with one stubble breaking operation, followed by one harrow operation and one chisel operation; 21% with one stubble breaking operation only; 12% with one harrow operation only; 18% with one stubble breaking operation followed by one chisel operation (7%), one harrow operation (7%) or one stubble breaking operation (4%)
Autumn application of Fungicide/growth regulator	On 63% of WOSR areas

142 Table 1. Main characteristics of reference situation of the study area in “Centre region”
143 (France), based on farmers’ interviews about their cropping practices during the period 2004-
144 2008

145 2.2. Methodological approach

146 2.2.1. General framework of the method

147 The method developed combines participatory scenario construction, numerical modelling
148 and participatory scenario evaluation; all the main stages involving stakeholder participation
149 (Figure 2). This method, mainly based on previous participatory methods, is composed of six
150 steps, which are detailed below.



164 Figure 2. Schematic representation of the methodological approach developed in this study.
165 Circular arrows represent feedback loops.

166 Box lines reflect the involvement of stakeholders in the different steps: boxes bordered by
167 dotted lines indicate no interaction with stakeholders; boxes bordered by solid lines represent
168 involvement of some stakeholders, with information derived from other sources (e.g.
169 literature, national statistics); boxes bordered by dashed+dotted lines represent participatory
170 workshops.

171 2.2.2. Identification of relevant stakeholders

1
2 172 The first step to implement a local participatory scenario design is the identification and
3
4
5 173 selection of all stakeholders whose activities could be substantial for local management of the
6
7 174 concerned issue. The research team first determined the stakeholders to be involved, based on
8
9
10 175 their impacts on the possible technical levers for the disease control.

13 176 2.2.3. Interview of stakeholders

16 177 After identification of the main stakeholders to be engaged in the study, gaining knowledge
17
18 178 on local practices and local stakeholders is necessary, in order not to omit stakeholders who
19
20
21 179 could be relevant and not pre-identified by research team (Reed, 2008). Thus, we interviewed
22
23 180 the local stakeholders who have an in-depth knowledge of WOSR growing in the region: the
24
25
26 181 local Specialist Technical Organization, the main technical advisors (the local Chamber of
27
28 182 Agriculture) and the main crop collector. They were interviewed on two items: (1) local
29
30
31 183 cropping systems and (2) identification of the different stakeholders to be involved in the
32
33 184 study, with information on their concerns and courses of action (e.g. van den Belt *et al.*, 2010)
34
35
36 185 over phoma stem canker.

39 186 2.2.4. Building a common scheme of phoma behaviour and of stakeholders' effects on
40
41 187 phoma management

44 188 Once all stakeholders were identified and the research team gained insight into regional
45
46 189 cropping and organisational characteristics through interviews, the challenge was how to
47
48
49 190 involve stakeholders and build a common background on the disease functioning. Since no
50
51 191 serious phoma epidemic has occurred in the region since 2002, the control of phoma stem
52
53
54 192 canker by lengthening the duration of effective resistance is now an academic topic. Thus, in
55
56 193 order to involve stakeholders in this issue, and make them aware of the possible consequences
57
58
59 194 of a return of phoma stem canker on WOSR, we decided to build with them a scheme of their

195 shared vision of phoma stem canker, taking inspiration from the ARDI (Actors, Resources,
196 Dynamics and Interactions) method (Etienne *et al.*, 2011). The objectives of this scheme were
197 fourfold: (i) for the stakeholders to identify the cultivation techniques (under their control)
198 which might affect the disease; (ii) to give stakeholders confidence in the modelling
199 framework supporting simulations and its underlying hypotheses, through a comparison of the
200 scheme on resources and dynamics they created and the SIPPOM-WOSR functioning scheme;
201 (iii) to ensure stakeholder representativeness and (iv) to involve stakeholders in a learning
202 process regarding the processes involved in stem canker management. During a four-hour
203 collective working session, participants were invited to present their visions of the behaviour
204 of the disease and potential technical levers, and of the stakeholders whose actions may
205 impact phoma control methods (e.g. cultivar choice, residue management), i.e. to represent
206 their mental model on disease functioning and acting stakeholders.

207 2.2.5. Scenario design of winter oilseed rape evolution

208 After a consensus has been reached among participants on the important levers for phoma
209 stem canker management, a second four-hour working session was devoted to the scenario
210 design of future WOSR cropping conditions. A scenario is composed of necessary detailed
211 inputs for SIPPOM-WOSR simulations, i.e. specification (value) for the seven variables,
212 defined yearly at field and/or at regional scale: WOSR acreages, sowing dates, sowing
213 densities, cultivars (with or without the RlmX-gene), nitrogen fertilization at sowing (product
214 type and fertilization rate), autumn fungicide application (date) and tillage after WOSR
215 harvest.

216 At the beginning of the session, a short presentation was made to:

- 217 - Describe model behaviour, required inputs and possible outputs, and identify precisely
218 the variables on which the scenarios could differ (i.e. variables described in Table 1)

- 219 - Present characteristics of the simulation support landscape
- 220 - Present a reference situation representing recent local practices (Table 1): cropping
221 systems and WOSR cultivation techniques, as well as cultivars (based on earlier
222 interviews with farmers whose cropped fields in 2004-2008 were considered in the
223 simulation support landscape) and numerical simulation results of this scenario.

224 Then, stakeholders were asked to imagine futures/trends for WOSR in their region and to
225 describe what contextual changes, either local or global (e.g. political, economic,
226 epidemiological, etc.), would be necessary for such futures to materialize. To illustrate French
227 national tendencies, national acreages of WOSR since 1989 (data Agreste) were presented.
228 Finally, stakeholders were asked in an open discussion to illustrate the identified futures with
229 detailed WOSR acreages (linked with crop sequences) and cultivation techniques, that could
230 affect phoma stem canker control, i.e. cropping characteristics corresponding to model inputs
231 (variables of Table 1), including their quantitative assessments. As phoma stem canker
232 control can depend on interactions between techniques (e.g. cultivar and sowing date,
233 Aubertot *et al.*, 2004), stakeholders were asked about combinations of cultural practices, as
234 well as about the factors governing the location of cropping systems and crop management
235 (e.g. relationships between soil types and cultivation techniques).

236 2.2.6. Scenario simulation with SIPPOM-WOSR

237 In order to assess consequences of management scenarios designed by stakeholders,
238 numerical simulations of these scenarios were realized using the numerical modelling
239 framework SIPPOM-WOSR; a Simulator for Integrated Pathogen Population Management
240 (Lô-Pelzer *et al.*, 2010a; Figure 2). It is a spatially explicit model simulating the dynamics of
241 pathogen population evolution (size and genetic structure) and consequent effects of phoma
242 stem canker on yield resulting from spatially-distributed cropping systems. This model

243 highlighted stable ranking of a wide range of oilseed rape management strategies, ranking
244 being consistent with experts' opinions (Lô-Pelzer *et al.*, 2010b). It integrates five sub-
245 models: (i) production of the primary inoculum, (ii) dispersal of the pathogens, (iii) genetics
246 of the pathogen population, (iv) crop growth, and (v) plant infection and calculation of the
247 subsequent yield losses.

248 Model inputs are a map of detailed cropping systems for each field (which is the simulation
249 unit), weather data, and the initial size and genetic structure of pathogen populations. Outputs,
250 for each simulation year at field scale, are disease severity, yield losses due to phoma stem
251 canker, and the genetic structure of the pathogen population (i.e. frequencies of virulent and
252 avirulent pathogen for a major resistance gene that are able and unable respectively to infect
253 WOSR varieties with this resistance gene). Initial frequency of virulent pathotypes on RlmX-
254 gene cultivars has been fixed to 10^{-7} of total pathogen population size.

255 Scenarios defined by stakeholders were run with the model for simulations of five years (one
256 year for model initialization and four years of simulations). When no specific rule was
257 available for crop or crop management allocation, these were allocated at random to fields
258 using R software V2.10.0 (R Development Core Team, 2009) to obtain a mixed landscape,
259 changing every year according to crop rotations, for both WOSR cropped area and WOSR
260 management techniques. There were three replicates for these allocations.

261 2.2.7. Discussion on scenario evaluations

262 Finally, the last step of the method was comprised of a third four-hour workshop. It presented
263 and discussed the numerical evaluation of scenarios. After a brief presentation of model
264 characteristics and of the previously designed scenarios, scenario simulation results for the
265 last simulation year and the whole landscape were presented. This included graphical
266 representations of all scenarios for the output variables Yield losses, Size of pathogen

267 population and Frequency of virulent pathogen; and a summary of the more important input
268 variables (i.e. cropping characteristic) that impacted these outputs).

269 After the presentation, stakeholders were asked to share their analysis on the scenario
270 simulations and other scenarios they could imagine, to initiate an iterative process between
271 scenario design and discussions.

272 3. Results

273 3.1. Characteristics of the stakeholders, derived from interviews

274 Three types of stakeholders were interviewed: the main crop collector (representing 65% of
275 oilseed rape collection in the area), the local Specialist Technical Organization (two persons:
276 the regional advisor and the manager of local crop experiments) and the main extension and
277 advisory service, i.e. the local Chamber of Agriculture (Table 2).

278 Their visions of current agricultural systems and crop management strategies for WOSR were
279 largely in agreement with each other and with detailed data collected on the simulation area
280 (Table 1). The general vision of stakeholders' organization for WOSR production/collection
281 and involvement in phoma stem canker management were also consistent: the interviewed
282 stakeholders considered that (i) policy makers have moderate courses of action and are not
283 concerned by phoma management; (ii) extension and advisory services are highly concerned
284 but have limited courses of action; (iii) crop collectors (cooperatives and retailers) are highly
285 concerned and have several courses of action; and (iv) breeders have the most concern about
286 phoma management and the most courses of action. According to the interviewed
287 stakeholders, farmers' behaviour is more contrasting. Farmers' concern on phoma may
288 depend on their experience, i.e. if their crop already suffered from phoma stem canker.

289 Interviewed stakeholders had different opinions on the Specialist Technical Organization

290 (Cetiom) behaviour: its courses of action were considered to be few by the main crop

291 collector and many by the Chamber of Agriculture.

292 According to the different interviews, the identified stakeholders affect WOSR management

293 in different ways. Breeders influence cultivar characteristics (e.g. sensitivity to disease) and

294 their potential availability for cooperatives/retailers. Crop collectors affect crop management

295 by restricting farmer choice through the inputs they sell (e.g. fungicides and cultivars) and by

296 their advice on cultivar choice. Farmers are the final decision makers for oilseed rape cultivar

297 choice and practices. Their practices can be constrained by policy, e.g. on dates for tillage

298 practices. They are advised by the extension and advisory services, who communicate

299 experiments results on WOSR cultivar and crop management strategies. These experiments

300 are mainly conducted by the local Specialist Technical Organization (Cetiom) and influence

301 breeder strategies.

302 Degree of stakeholder involvement in/concern about WOSR crop management for phoma

303 stem canker depends on the possible consequences of the disease's return: Yield loss for

304 farmers (and indirectly for advisory services), crop collectors and Cetiom; need for innovation

305 for crop breeders in case of resistance failure.

306 Stakeholders' courses of action will impact phoma stem canker management either directly

307 (e.g. farmers' choices of cultivation practice) or indirectly (e.g. communication). Although

308 these courses of action cannot be directly taken into account in the model SIPPOM-WOSR,

309 they are translated into actions on cropping systems, which are the main inputs of the model

310 (cf. Part 3.4). Stakeholder concerns will impact the model output to be studied by the research

311 team.

Type of stakeholder	Step 2. Interviews	Step 3. Scheme building	Step 4. Scenario design	Step 6. Scenario result discussion
---------------------	-----------------------	----------------------------	----------------------------	---------------------------------------

Decision makers

Farmers	-	1	1	1
Crop collectors	1	1	2	2 (<i>1</i>)
Crop breeder	-	2	0	0
Specialist				
Technical	2	2	0	<i>1</i>
Organization				
Extension and advisory services	1	4	2	1
Policy makers	-	1	1	0
Other stakeholders				
Researchers	-	5	3	3
Total	4	15	8	7

Table 2. Type and number of stakeholders attending to the four steps of the method stakeholders were involved in (c.f. Figure 2 and paragraph 3.1. for details on the types of stakeholders). Italics underline the participation of a new stakeholder from an organization that had already attended to a previous workshop.

3.2. Study participant vision of phoma behaviour and stakeholders' management options

This step resulted into two schemes presenting (a) resource dynamics (resources: cultivation techniques, stubbles, etc.) affecting phoma stem canker and the type of relationships between the resources; and (b) stakeholders' impacts on cultivation practices (e.g. testing, regulation) and type of relationships between stakeholders (e.g. communication). These schemes, collectively constructed during the first workshop, showed that the main relevant stakeholders were involved in the study, i.e. every stakeholder included in the stakeholders' scheme (b) was identified in steps 1 and 2 (Figure 2) and invited to workshops. Direct comparison between the resource dynamics scheme of the model (based on Lô-Pelzer *et al.*, 2010a; 2010b) and the one designed by stakeholders (scheme a) highlighted that the model structure was in accordance with stakeholders' vision of the disease (although some factors are absent from the model, e.g. working time, machine availability). Attendance at this workshop was high (15 people), with representativeness of all stakeholder type and some diversity within type (e.g. two crop breeders, four for extension and advisory services) (Table 2).

330 3.3. Participatory scenario design

1
2 331 A summary of the future trends imagined by the stakeholders was made in order to get
3
4
5 332 structured scenarios with all the details required for model inputs. Quantifications of model
6
7 333 inputs were designed as implicit comparisons (i.e. “increase” or “decrease”) with the
8
9 334 reference situation (Table 1), as expressed by stakeholders during the workshop (Table 2).

11
12
13 335 Three main trends were identified (Table 3), corresponding to different contextual changes
14
15 336 (political, epidemiological, economic or regulatory contexts). Trend A assumes an increase in
16
17 337 WOSR area (in comparison with the reference situation), which seems the most plausible to
18
19 338 the different stakeholders, in accordance with the national trend and the development of
20
21 339 biofuels. This global trend results in shorter crop rotations (e.g. WOSR-Winter Wheat-Barley
22
23 340 becomes WOSR-Winter Wheat), which are associated with varieties containing quantitative
24
25 341 and/or qualitative resistance, different areas with mouldboard ploughing, and an increase in
26
27 342 autumn nitrogen applications. Trend B assumes a decrease in WOSR area, which might occur
28
29 343 if WOSR became less profitable or if policies were to change, e.g. if nitrate regulations were
30
31 344 to increasingly restrict the time window for tillage practices, work organization could need to
32
33 345 diversify crops to decrease working pressure at a certain time. This trend was associated with
34
35 346 longer crop sequences, current varieties and cultivation practices; except for autumnal
36
37 347 nitrogen applications. Trend C assumes a significant increase in areas with mouldboard
38
39 348 ploughing after WOSR harvest, which would occur either if the current qualitative resistance
40
41 349 would quickly be overcome and thus become inefficient, or if the herbicide glyphosate would
42
43 350 be banned, in conformity with current policies to reduce pesticides. This trend is associated
44
45 351 with cultivars with quantitative resistance and an increase in autumnal nitrogen applications
46
47 352 (Table 4).

48
49
50 353 Workshop participants (Table 2) associated the three trends with two climatic datasets: (1)
51
52 354 current data (2003-2008); and (2) weather data favouring development of phoma stem canker
53
54
55
56
57
58
59
60
61
62
63
64
65

355 epidemics (i.e. with wet mild autumns). Participants associated fungicide applications on
1
2 356 WOSR with the second weather dataset. They asked the research team to define this weather
3
4 357 dataset as the repetition of the year presenting the highest temperatures and rainfalls in
5
6
7 358 September and October in the last ten years.
8
9
10
11
12
13
14
15
16
17
18
19
20
21
22
23
24
25
26
27
28
29
30
31
32
33
34
35
36
37
38
39
40
41
42
43
44
45
46
47
48
49
50
51
52
53
54
55
56
57
58
59
60
61
62
63
64
65

1
2
3
4
5
6
7
8
9
10
11
12
13
14
15
16
17
18
19
20
21
22
23
24
25
26
27
28
29
30
31
32
33
34
35
36
37
38
39
40
41
42
43
44
45
46
47
48
49

Main trend	Context change	Main variable changed	Other changed variables
A. Increase of WOSR areas (in comparison with the reference situation)	Present economic trend; biofuel production increase WOSR net return decrease	Crop sequences	Cultivars, tillage, sowing dates, nitrogen fertilisation frequency, fungicide frequency, climate
B. Decrease of WOSR areas (in comparison with the reference situation)	Nitrate regulation change, restricting time-windows for tillage Policy change to promote longer crop rotations	Crop sequences	Nitrogen fertilisation frequency, fungicide frequency, climate
C. Increase of areas with mouldboard ploughing after WOSR harvest	Overcome of currently used qualitative resistance (RlmX) Banning of glyphosate	Tillage frequency after WOSR harvest	WOSR frequency, nitrogen fertilization, fungicide frequency, climate

Table 3. Main characteristics of the three trends collectively designed during the first workshop
WOSR: Winter Oilseed Rape; RlmX: specific resistance currently cropped; s.m⁻²: seeds per square meter

359
360

1
2
3
4
5
6
7
8
9
10
11
12
13
14
15
16
17
18
19
20
21
22
23
24
25
26
27
28
29
30
31
32
33
34
35
36
37
38
39
40
41
42
43
44
45
46
47
48
49
50
51
52
53
54
55
56
57
58
59
60
61
62
63
64
65

361 For the three trends, stakeholders identified soil type as the location factor for crop rotation,
362 tillage practices, nitrogen fertilization and fungicide applications. No association between
363 cropping practices was suggested at this stage, except for the sowing densities, which were
364 determined by cultivars.

365 For the three trends, stakeholders suggested extreme values for the different variables. For
366 instance, for trend A, stakeholders proposed an increase from 33% to 50% of the whole
367 cropped area sown with WOSR. A 50% WOSR frequency corresponds to a two-year crop
368 rotation (WOSR – Winter Wheat) on the whole area, already occurring locally in some farms.
369 As some stakeholders questioned the sustainability of such a crop rotation, stakeholders also
370 decided on a three-year crop rotation (WOSR – Winter Wheat – Barley) with up to 33% of the
371 local area cropped with WOSR. In order to compromise between the two WOSR acreages, the
372 research team suggested scenarios with intermediate variable values (e.g. 42%), to try
373 considering more plausible regional configurations and explore the consequences of making
374 smaller changes.

375 Once workshop participants had defined the main variable specification for a trend (i.e.
376 WOSR crop areas for trends A and B vs. mouldboard-tilled areas for trend C; Tables 2 and 3),
377 ranges for other variables were defined. Participants decided to define these ranges
378 independently for each variable. All combinations were thus simulated.

379 For instance, for trend A, stakeholders defined (Table 4): (i) three specifications for sown
380 cultivars; (ii) one specification of WOSR sowing date; (iii) one specification for sowing
381 density; (iv) three specifications for organic nitrogen fertilization at sowing; (v) two
382 specifications for fungicide treatment depending on weather conditions; and (vi) three
383 specifications for mouldboard tillage practices after WOSR harvest. As stakeholders did not
384 mention links between variable values, all combinations of variable specifications lead to 162

385 scenarios for trend A. Following the same methodology for trends B and C, the total number
386 of scenarios was 234 for the three trends (Table 4).

1
2
3
4
5
6
7
8
9
10
11
12
13
14
15
16
17
18
19
20
21
22
23
24
25
26
27
28
29
30
31
32
33
34
35
36
37
38
39
40
41
42
43
44
45
46
47
48
49
50
51
52
53
54
55
56
57
58
59
60
61
62
63
64
65

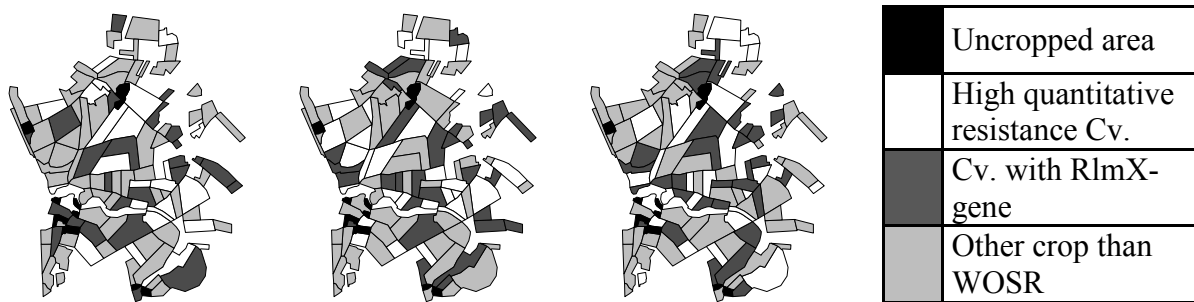
1
2
3
4
5
6
7
8
9
10
11
12
13
14
15
16
17
18
19
20
21
22
23
24
25
26
27
28
29
30
31
32
33
34
35
36
37
38
39
40
41
42
43
44
45
46
47
48
49

Variable	Trend A: Increase of WOSR acreages	Trend B: Decrease of WOSR acreages	Trend C: Increase of mouldboard ploughing after WOSR cultivation
WOSR frequency -% of total area-	33; 42; 50%	26.7; 28.9; 30%	30; 33; 42%
Sowing dates	From 15/08 to 05/09 (peak between 20 and 30/08)	Reference values	Reference values
Mean sowing densities	45 s.m ⁻² for line cultivars; 35 s.m ⁻² for hybrid cultivars	45 s.m ⁻² for line cultivars; 35 s.m ⁻² for hybrid cultivars	45 s.m ⁻² for line cultivars; 35 s.m ⁻² for hybrid cultivars
Nitrogen fertilisation - % of total area- (on shallow; deep soils)	10% (20; 0); 22.5% (35; 10); 35% (50; 20)	10% (20; 0); 22.5% (35; 10); 35% (50; 20)	10% (20; 0); 22.5% (35; 10); 35% (50; 20)
Cultivars	100% RlmX-cultivars; 100% with high partial resistant cultivars; 50% RlmX and 50% of high partial resistant cultivars	Reference proportions for RlmX and non-RlmX cultivars	100% of high partial-resistant cultivars
Tillage	0; 10; 20% of WOSR acreages	Reference values	30; 40; 50% of WOSR acreages
Fungicide	On 10% of WOSR acreages if wet and warm climate option; 0 otherwise	On 10% of WOSR acreages if wet and warm climate option; 0 otherwise	On 10% of WOSR acreages if wet and warm climate option; 0 otherwise
Weather	Current; warm and wet	Current; warm and wet	Current; warm and wet
Number of scenarios	162	18	54

Table 4. Characteristics of the various scenarios constructed by participants of the second workshop. WOSR: Winter Oilseed Rape; reference: values of reference situation; current weather: 2003-2008. Total number of scenarios per trend is obtained by multiplying the number of possibilities for each variable

387 3.4. Model-based scenario simulation

1
2
3 388 Simulations of the 234 scenarios had to be performed with the modelling framework
4
5 389 SIPPOM-WOSR. As stakeholders did not define specific localization factors for WOSR
6
7 390 and/or practices during the scenario construction workshop (except for tillage and nitrogen
8
9
10 391 fertilization, linked with soil type), three replicates for the random spatial distribution of crop
11
12 392 and practices were used, leading to 702 scenarios (234 scenarios x 3 replicates) (Figure 3).



393
394 Figure 3. Example of one year-random cultivar allocation (3 replicates of the same scenario).
395 Cv : cultivar ; WOSR: Winter OilSeed Rape

34 396 3.5. Scenario evaluation and discussion with stakeholders

37 397 3.5.1. Model-based scenario evaluation

40 398 Model-based simulation of co-designed scenarios resulted in very diverse results for the three
41
42 399 main output variables, i.e. frequency of virulent pathotypes on RlmX-cultivars, yield losses
43
44 400 and size of the total pathogen population, i.e. including all pathotypes (Figures 4 and 5, -only
45
46 401 one replicate presented for trends A and C for brevity-). Trends B and C (decrease in WOSR
47
48 402 acreages and increase in mouldboard ploughed areas respectively) showed lower yield losses
49
50 403 and sizes of total pathogen population than trend A (increase in WOSR acreages) (Figures 4
51
52 404 and 5). Trend C showed lower frequency of virulent pathotypes on RlmX-cultivars than trend
53
54 405 B. Trend B mean frequency of virulent pathotypes on RlmX-cultivars was lower than for
55
56 406 trend A. Trend A displayed very variable results for frequency of virulent pathotypes on

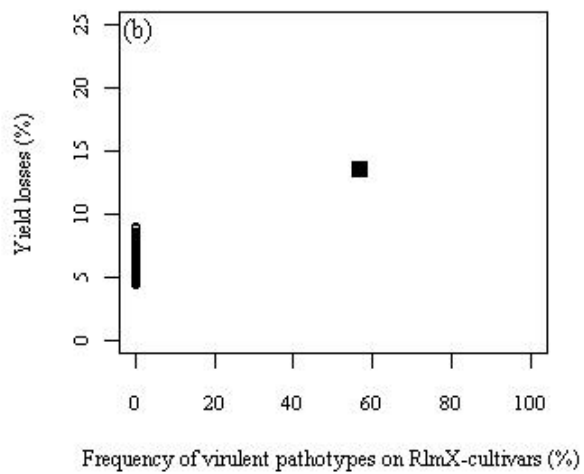
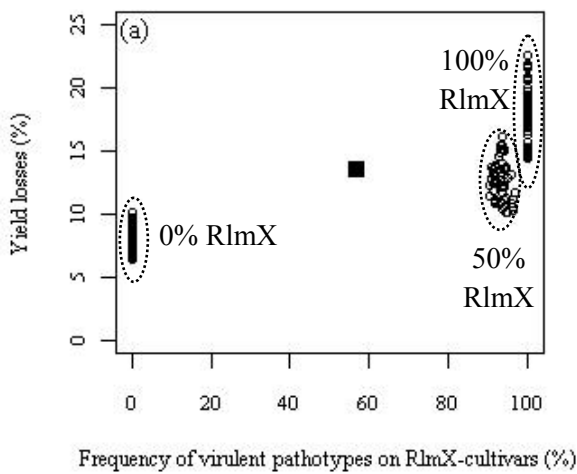
1
2
3
4
5
6
7
8
9
10
11
12
13
14
15
16
17
18
19
20
21
22
23
24
25
26
27
28
29
30
31
32
33
34
35
36
37
38
39
40
41
42
43
44
45
46
47
48
49
50
51
52
53
54
55
56
57
58
59
60
61
62
63
64
65

407 RlmX-gene, from 0 to 100% of virulent pathogen (Figure 4). This is due to the large extent
408 explored for the model input frequency of RlmX-cultivars in the area in this trend (Table 4,
409 Figure 4). For trend A, only scenarios with no RlmX-cultivars had lower frequency of virulent
410 pathotypes on RlmX-gene than the reference situation (Figure 4).

411 Trends B and C had lower yield losses and sizes of the total pathogen population than the
412 reference situation (Figures 4 and 5). Trend C had mostly lower frequency of virulent
413 pathotypes on RlmX-gene than the reference, due to the absence of RlmX-cultivars in this
414 trend, consistent with trend A results with the same cultivar configuration. Trend B displayed
415 different frequencies (but rather high) of virulent pathotypes on RlmX-cultivars, which
416 highlighted the importance of rules for locating and combining crops and practices (Figure 5).
417 Main explanatory variables differed between model outputs (Figure 4) but were consistent
418 between trends (data not shown).

To slow down RlmX overcome :
 ↘ the frequency of use of cultivar RlmX

To decrease the Yield losses :
 ↗ Organic Nitrogen application
 ↘ WOSR acreages



To decrease the size of pathogen population :
 ↗ Tillage intensity
 ↘ WOSR acreages

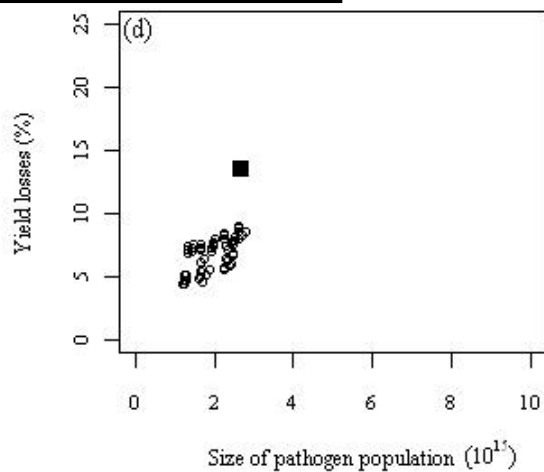
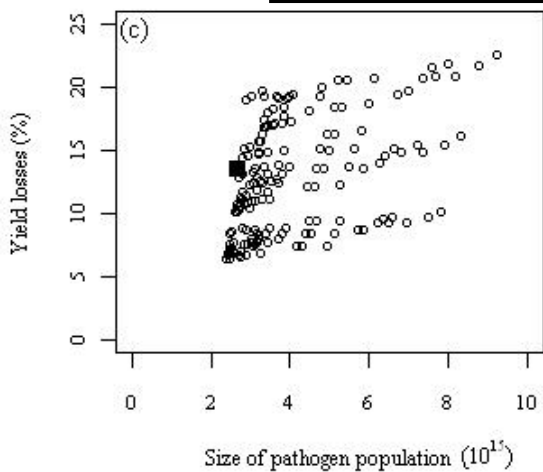


Figure 4. Scenario simulation results and their main explanatory variables (only one replicate presented): Yield losses depending on frequency of virulent pathotypes on RlmX-cultivar (figures a, b) and size of total pathogen population (figures c, d) for trends A and C. Trend A (162 scenarios): fig. a and c; Trend C (54 scenarios): fig. c and d. Round symbols represent scenarios of trends A and C; square symbols are for the reference situation (see Tables 1 and 4 for description). Main cropping variables (i.e. explanatory variables) impacting outputs are summarized in the black boxes.

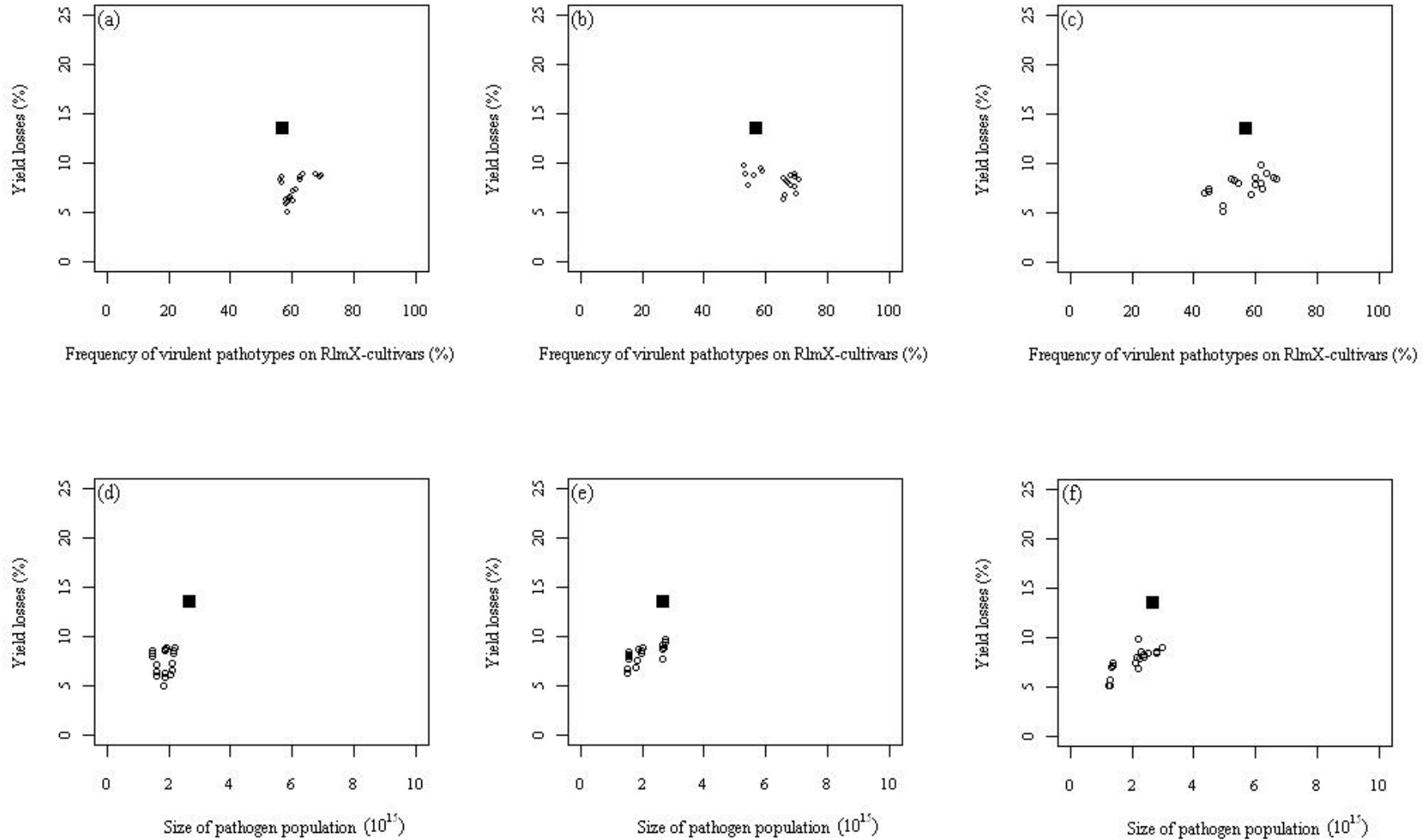


Figure 5. Scenarios simulation results (three replicates): Yield losses depending on Frequency of virulent pathotypes on RlmX-cultivar (figures a, b, c) and Size of total pathogen population (figures d, e, f) for trend B. Trend B (18 scenarios): Decrease of WOSR areas in link with economical/political changes. Round symbols hold for scenarios of trend B; squared symbol holds for reference situation.

474 3.5.2. Scenario collective discussion

1
2
3 475 During the workshop, study participants (Table 2) expressed to the research team that
4
5 476 scenarios evaluations highlighted relevant features to them. For instance, they highlighted that
6
7 477 the information on cropping practices' ranking for phoma stem canker management could
8
9
10 478 help them to adapt their technical advices (see Figure 4). They recognized the temporal and
11
12 479 spatial scales of the model as valuable to see consequences of individual choices on phoma
13
14
15 480 stem canker management. Indeed, although they acknowledged that field scale is their main
16
17 481 working scale; past phoma epidemics showed them the necessity of considering the inter-
18
19 482 annual and inter-fields processes, for which the modelling approach is very informative.
20
21
22 483 Moreover, discussions also highlighted some elements stakeholders found missing in the
23
24 484 model (e.g. intercropping practices, crop mixtures, partial resistance behaviour over time) that
25
26
27 485 could affect phoma management.

28
29
30 486 During the discussion of the simulation results the reference situation was challenged.

31
32
33 487 Although it had been presented to stakeholders during the second workshop, prior to the
34
35 488 participatory scenario design, stakeholders asked for its reappraisal, concerning cultivars, as
36
37 489 well as types and dates of tillage operations. This reference situation was considered too local,
38
39
40 490 i.e. taking into account very local contextual issues as for instance the nearby presence of pig
41
42 491 farms affecting the type, level and frequency of organic nitrogen fertilization. Thus, study
43
44
45 492 participants were willing to explore a new reference situation, that differed for some cropping
46
47 493 practices (e.g. nitrogen fertilization, soil tillage timing).

48
49
50
51 494 At the end of the workshop, stakeholders discussed the driving forces necessary for cropping
52
53 495 practice changes and the impacts of such changes. For example, increasing WOSR frequency
54
55 496 in the crop rotation would involve a reduction in deep soil tillage (more direct sowing) due to
56
57
58 497 lower working-time availability. For instance, one participant insisted on the “attractiveness

1
2 498 of increasing crop rotation duration” with regard to phoma stem canker management but put it
3
4 499 into perspective with economic and agronomic contexts: “such an option would face
5
6 500 profitability and realization problems, as farmers would have to grow for instance sunflower
7
8 501 [i.e. to add it in the crop sequence], which is less profitable (its price is falling and it competes
9
10 502 with winter wheat) and hard to grow due to its susceptibility to bird damage and water
11
12 503 requirement [that may not be fulfilled under local weather conditions]”. Study participants
13
14 504 lacked economic information to judge scenarios, to be able to put into perspective yield losses
15
16 505 due to stem canker and profitability at the rotation scale.
17
18
19

20 506 Finally, the participants suggested broadening the study object, by coupling SIPPOM-WOSR
21
22 507 with models simulating other diseases, insects and weeds. They pointed out that tackling a
23
24 508 disease, in this case phoma stem canker, could affect the control of other pests, e.g. weed
25
26 509 control. They concluded that focusing on one issue may have undesirable effects on another
27
28 510 one, thus requiring enlarging the scope of the topic.
29
30
31

32 33 511 4. Discussion 34 35

36 512 In this section we will discuss the tested method, and not the results that are mainly case-
37
38 513 specific.
39
40
41

42 514 In this paper we have tested a method of participatory quantitative scenario design, with
43
44 515 phoma stem canker management as a case study. This method includes stages for
45
46 516 stakeholders’ identification, analysis of their courses of action, collective discussions on the
47
48 517 issue functioning, and finally the design, model-based evaluation and discussion of future
49
50 518 scenarios implying cropping system change and subsequent effects on phoma stem canker
51
52 519 management. Using this method, the case study for the “Centre region” highlighted
53
54 520 possibilities to directly derive quantitative scenarios with a participatory approach,
55
56 521 overcoming the classic problem of converting narratives into quantitative data (Alcamo, 2008;
57
58
59
60
61
62
63
64
65

1
2
3
4
5
6
7
8
9
10
11
12
13
14
15
16
17
18
19
20
21
22
23
24
25
26
27
28
29
30
31
32
33
34
35
36
37
38
39
40
41
42
43
44
45
46
47
48
49
50
51
52
53
54
55
56
57
58
59
60
61
62
63
64
65

522 Walz *et al.*, 2007) in spite of the topic’s complexity. This participatory future development
523 provided insight into different types of drivers for the future: global vs. local changes (e.g.
524 economic, political or regulatory, vs. epidemiological drivers respectively). These drivers
525 were associated to different types of scenarios (as defined in Borjeson *et al.*, 2006):
526 predictive forecasting scenarios (e.g. current economic trends), predictive “what-if” scenarios
527 (e.g. regulatory change) and exploratory external scenarios (i.e. policy change). These futures
528 led to diverse impacts on the agricultural context (crops and cropping practices). Biological
529 processes of phoma stem canker evolution were thus considered in this study, as proposed by
530 Blackstock *et al.* (2007), “in the context of their social-economic drivers and responses”,
531 taking into account local knowledge (Patel *et al.*, 2007) and local needs and priorities (Dougill
532 *et al.*, 2006).

533 Although we invited all types of stakeholders to join in the study, and most attended at least
534 one workshop, attendance dropped after the first meeting on disease behaviour (Table 2). A
535 reason for this decline is that since the disastrous phoma epidemics that occurred prior to
536 2002, the disease has been perceived as less serious in the region due to the use of new
537 resistant cultivars harbouring RlmX-gene (Rlm7 being the gene presented as an example to
538 stakeholders), whose resistance has not yet broken down. Thus the priorities of many of the
539 stakeholders did not match those of the research team. The research team was unknown to
540 stakeholders prior to the study and had not received adequate publicity before the project
541 began. Building a robust partnership, at the beginning of the study, with a key local actor
542 could have helped to overcome this problem (Ericson, 2006), even when using a pre-
543 developed model. Trust between the research team and stakeholders is indeed a key element
544 for a successful participatory study (Voinov & Gaddis, 2008). Study institutionalization may
545 also have helped participation (Cornwell, 2004; Reed, 2008). Although participation was
546 relatively low (Table 2), a diverse set of stakeholders was present at each step of the

1 547 workshop (Wallerstein, 1999). The most influential of institutions on the local WOSR
2 548 growing conditions were present at each step (e.g. the main crop collector; the Chamber of
3
4 549 Agriculture). These institutions can be considered as the most relevant stakeholders on this
5
6
7 550 issue; their participation being of prime importance (Reed, 2008; Voinov & Bousquet, 2010).
8
9 551 The systematic attendance of scientists with a deep understanding of the issue was also useful
10
11 552 for scenario design (Pahl-Wostl, 2008). An increased participation of farmers may have led to
12
13 553 better structured scenarios, reflecting a more systemic point of view on interlinked cropping
14
15 554 practices. This could also had been achieved by creating Fuzzy Cognitive Maps with
16
17 555 stakeholders (e.g. van Vliet *et al.*, 2010), in order to highlight relationships and feedbacks
18
19 556 between key variables (e.g. WOSR acreages and tillage). However, the large scope of
20
21 557 scenarios designed by stakeholders may not have been improved by a larger participation, as
22
23 558 the consequences on phoma management were already very large (Figures 4 and 5). This
24
25 559 large scope, with different values tested per variable for each scenario, allowed to take
26
27 560 implicitly into account “uncertainty”, as proposed in Bayesian statistical reasoning (Kemp-
28
29
30
31
32
33
34 561 Benedict, 2010).

35
36
37 562 The “trust” issue also led to model “testing” resulting in some exaggerated aspects of
38
39 563 scenarios, such having only one WOSR cultivar grown or 2-years rotation in the whole area;
40
41 564 leading to some kind of “sensitivity analysis” on cropping systems’ inputs. Such scenarios
42
43 565 were exploratory and led to extreme scenario assessment for the considered output variables.
44
45 566 These evaluations, although biologically sound and in accordance with the functioning of the
46
47 567 SIPPOM-WOSR model based on system dynamics, would most probably not occur in reality
48
49 568 as there is little chance that those scenarios would happen. These evaluations often showed a
50
51 569 strong increase in disease pressure in comparison with the reference situation. This led study
52
53 570 participants to want to update the reference situation. Indeed, they considered that it
54
55 571 underestimated risks of phoma epidemics because of its local peculiarities. This issue might
56
57
58
59
60
61
62
63
64
65

572 have been avoided by building confidence with stakeholders earlier in the process (e.g.
1
2 573 Therond *et al.*, 2009), illustrating model functioning by giving more details on the
3
4 574 relationships between the key processes and variables (Lô-Pelzer *et al.*, 2010a; 2010b)
5
6
7 575 therefore providing more transparency of the system representation in the model (Leenhardt *et*
8
9 576 *al.*, 2012), or by building the reference situation during a workshop (Leenhardt *et al.*, 2012).
10
11 577 However, the desire to reconsider the reference situation could also be linked to the arrival of
12
13 578 new participants in the last workshop (albeit not new stakeholder types or institutions, see
14
15 579 Table 2), who did not participate in the scenario elaboration and were less willing to accept
16
17 580 the scenario evaluations (Patel *et al.*, 2007). As highlighted by Peterson *et al.* (2004), unstable
18
19 581 participation may indeed be a challenge, threatening consensus reaching, by orienting
20
21 582 discussions towards a single interest at the expense of a more systemic view. This was the
22
23 583 case here, as discussions were shifted at the last workshop by new participants from the
24
25 584 considered issue to other crop-related problems (e.g. weeds).
26
27
28
29
30
31
32 585 Finally, the methodological framework tested in this paper allowed us to build quantitative
33
34 586 scenarios directly with stakeholders for their model-based assessment. The model had to be
35
36 587 accepted by the stakeholders, as the method involved the use of a pre-existing model, instead
37
38 588 of co-designing or co-adapting the modelling framework (e.g. Vayssieres *et al.*, 2011).
39
40 589 Methods for group model building are numerous, aiming at either building qualitative models
41
42 590 (Causal Loop Diagrams, Videira *et al.*, 2012), semi-quantitative models (Fuzzy Cognitive
43
44 591 Maps, van Vliet *et al.*, 2010) or formal models (Bayesian Belief Networks, Pollino *et al.*,
45
46 592 2007). Although the first two methods structure and (partly) quantify the system dynamics,
47
48 593 with a focus on feedbacks, their complexity can quickly increase so that they become hard to
49
50 594 explain and thus to quantify. Bayesian Belief Networks require high-knowledge stakeholders;
51
52 595 and time and efforts for its parameterization can often be overwhelming. Although these
53
54 596 methods will facilitate scenario construction and quantification for the co-developed models,
55
56
57
58
59
60
61
62
63
64
65

1 597 they may not achieve the necessary numeric variable estimation. Moreover, several models,
2 598 designed by scientists only, are available to deal with scenario simulation of complex issues.
3
4 599 For these models to be used in participatory studies, model acceptance by stakeholders can be
5
6
7 600 challenging, leading in some participatory studies to the necessity of co-developing a new
8
9 601 model (e.g. Pedersen & Grant, 2004). In our study, model acceptance was partly the result of
10
11 602 collective discussions about disease processes (model processes) and model outputs in an
12
13 603 iterative dialogue. Such dialogue is recognized as necessary for both improving information
14
15 604 exchanges and building trust with stakeholders (Parker *et al.*, 2002; Leenhardt *et al.*, 2012).
16
17 605 Discussions on output customisation could also have increase model acceptance, through an
18
19 606 adaptation of raw model outputs into indicators easier to interpret (Leenhardt *et al.*, 2012). An
20
21 607 integrated analysis of scenarios could have helped the evaluation of the trade-offs between the
22
23 608 different model outputs, thus providing information for disease “risks” in front of contextual
24
25 609 change.
26
27
28
29
30

31 32 610 5. Conclusion 33 34

35 611 The proposed and tested participatory method combined the involvement of a diversity of
36
37 612 stakeholders, the design of qualitative and quantitative scenarios and their evaluation with a
38
39 613 pre-existing model. In spite of the complexity and scale of the studied system, the tested
40
41 614 method made it possible for stakeholders to build a range of scenarios with highly diverse
42
43 615 impacts on phoma stem canker management. This method proposes a “package” ranging from
44
45 616 the identification of a local problem by researchers to the exploration, analysis and discussion
46
47 617 with stakeholders of potential future levers for its management. The method could be used for
48
49 618 quantitative scenario design for problems whose processes are strongly influenced by
50
51 619 stakeholders seeking a sustainable solution. To improve the implementation of the method for
52
53 620 scenario design presented here, we would recommend, for participation improvement and
54
55 621 easier model acceptance, to (1) build a partnership with a local key actor, who could locally
56
57
58
59
60
61
62
63
64
65

622 promote the study and participate to build trust between the local stakeholders and the
1
2 623 research team (in case the team is locally unknown) ; (2) give more insight to stakeholders on
3
4 624 model functioning and processes instead of only key variables ; and (3) facilitate
5
6
7 625 interpretation on scenario assessment through model output customization.
8
9

10 Acknowledgments

11
12
13 626 Authors would like to thank Marie Boillot (Cetiom) for farmers' interviews and study
14
15 627 participants. Authors would like to thank Alan Scaife for English reviewing. This work was
16
17 628 carried out with the financial support of the "CTPS – Comité Technique Permanent de la
18
19 629 Sélection – French Permanent Technical Committee for Selection" under the project
20
21 630 "Evolep". This work is part of a Ph.D project funded by INRA, AgroParisTech and ABIES.
22
23 631 This work is part of the UMT Pivert program supported by the French ministry of
24
25 632 Agriculture. Authors thank the SSP (Service de la Statistique et de la Prospective) of the
26
27 633 French Ministry of Agriculture for the availability of the dataset "Enquêtes Pratiques
28
29 634 Culturales 2006". We thank the two anonymous reviewers for their helpful and valuable
30
31 635 comments on an earlier draft of the manuscript.
32
33
34
35
36
37

38 References

- 39
40 Agreste – Enquête sur les pratiques culturales, 2006. SSP (Service de la Statistique et de la
41
42 Prospective).
43
44 Agreste, Website of Agreste. [Online]. <http://www.agreste.agriculture.gouv.fr> (December 1st
45
46 2011).
47
48
49 Alcamo, J., 2008. The SAS approach: Combining qualitative and quantitative knowledge in
50
51 environmental scenarios, in: Environmental Futures. The Practice of Environmental Scenario
52
53 Analysis (J. Alcamo, ed.). Elsevier, Amsterdam, The Netherlands, pp. 123-150.
54
55
56
57
58
59
60
61
62
63
64
65

- 1
2
3
4
5
6
7
8
9
10
11
12
13
14
15
16
17
18
19
20
21
22
23
24
25
26
27
28
29
30
31
32
33
34
35
36
37
38
39
40
41
42
43
44
45
46
47
48
49
50
51
52
53
54
55
56
57
58
59
60
61
62
63
64
65
- Alcamo, J., Henrichs, T., 2008. Toward guidelines for environmental scenario analysis, in:
Environmental Futures. The Practice of Environmental Scenario Analysis (J. Alcamo, ed.).
Elsevier, Amsterdam, The Netherlands, pp. 13-35.
- Aubertot, J. N., Pinochet, X., Doré, T., 2004. The effects of sowing date and nitrogen availability
during vegetative stages on *Leptosphaeria maculans* development on winter oilseed rape.
Crop Protection 23(7):635-645.
- Aubertot, J. N., West, J. S., Bousset-Vaslin, L., Salam, M. U., Barbetti, M. J., Diggle, A. J., 2006.
Improved resistance management for durable disease control: A case study of phoma stem
canker of oilseed rape (*Brassica napus*). European Journal of Plant Pathology 114(1):91-106.
- Bacic, I. L. Z., Rossiter, D. G., Bregt, A. K., 2006. Using spatial information to improve collective
understanding of shared environmental problems at watershed level. Landscape and Urban
Planning 77(1-2):54-66.
- Blackstock, K. L., Kelly, G. J., Horsey, B. L., 2007. Developing and applying a framework to
evaluate participatory research for sustainability. Ecological Economics 60(4):726-742.
- Bokor, A., Barbetti, M. J., Brown, A. G. P., Mac Nish, G. C., P.McR, W., 1975. Blackleg of
Rapeseed. Journal of Agriculture, Western Australia 16:7-10.
- Borjeson, L., Hojer, M., Dreborg, K. H., Ekvall, T., Finnveden, G., 2006. Scenario types and
techniques: Towards a user's guide. Futures 38(7):723-739.
- Cornwell, L., 2004, Future Planning: Banff National Park, in: Mediated Modeling. A System
Dynamics Approach to Environmental Consensus Building (M. van den Belt, ed.), Island
Press, Washington D.C., U.S.A, pp. 164-186.
- Delourme, R., Chevre, A. M., Brun, H., Rouxel, T., Balesdent, M. H., Dias, J. S., Salisbury, P.,
Renard, M., Rimmer, S. R., 2006. Major gene and polygenic resistance to *Leptosphaeria*
maculans in oilseed rape (*Brassica napus*). European Journal of Plant Pathology 114(1):41-52.

- 1 Dockerty, T., Lovett, A., Appleton, K., Bone, A., Sunnenberg, G., 2006. Developing scenarios
2 and visualisations to illustrate potential policy and climatic influences on future agricultural
3 landscapes. *Agriculture, Ecosystems & Environment* 114(1):103-120.
4
5
6
7 Dougill, A. J., Fraser, E. D. G., Holden, J., Hubacek, K., Prell, C., Reed, M. S., Stagl, S., Stringer,
8
9 L. C., 2006. Learning from doing participatory rural research: Lessons from the Peak District
10 National Park. *Journal of Agricultural Economics* 57(2):259-275.
11
12
13
14 Dubrovsky, M., Simon, K.H., Stuch, B., Kok, K., Harrison, P.A., 2011. Report on the European
15 driving force database for use in the integrated assessment platform. CLIMSAVE Deliverable
16
17 3.2. [http://www.climsave.eu/climsave/doc/Report_on_the_database_](http://www.climsave.eu/climsave/doc/Report_on_the_database_of_European_drivers.pdf)
18
19 [of_European_drivers.pdf](http://www.climsave.eu/climsave/doc/Report_on_the_database_of_European_drivers.pdf). Accessed 12 March 2013.
20
21
22
23
24 Ericson, J. A., 2006. A participatory approach to conservation in the Calakmul Biosphere
25 Reserve, Campeche, Mexico. *Landscape and Urban Planning* 74(3-4):242-266.
26
27
28
29 Etienne, M., Du Toit, D. R., Pollard, S., 2011. ARDI: A Co-construction Method for Participatory
30 Modeling in Natural Resources Management. *Ecology and Society* 16(1).
31
32
33
34 Eurostat, Website of Eurostat. [Online].
35
36 epp.eurostat.ec.europa.eu/portal/page/portal/eurostat/home (December 1st 2011)
37
38
39 Fitt, B. D. L., Brun, H., Barbetti, M. J., Rimmer, S. R., 2006. World-wide importance of phoma
40 stem canker (*Leptosphaeria maculans* and *L-Biglobosa*) on oilseed rape (*Brassica napus*).
41
42
43
44
45 *European Journal of Plant Pathology* 114(1):3-15.
46
47
48
49 Flor, H.H., 1971. Current status of the gene-for-gene concept. *Annual Review of Phytopathology*
50
51
52
53
54
55
56
57
58
59
60
61
62
63
64
65

- 1 Huang, Y. J., Evans, N., Li, Z. Q., Eckert, M., Chevre, A. M., Renard, M., Fitt, B. D. L., 2006.
2 Temperature and leaf wetness duration affect phenotypic expression of Rlm6-mediated
3 resistance to *Leptosphaeria maculans* in *Brassica napus*. *New Phytologist* 170(1):129-141.
4
5
6
7 Kemp-Benedict, E. 2010. Converting qualitative assessments to quantitative assumptions: Bayes'
8 rule and the pundit's wager. *Technological Forecasting & Social Change* 77: 167-171.
9
10
11 Kok, K., Patel, M., Rothman, D. S., Quaranta, G., 2006. Multi-scale narratives from an IA
12 perspective: Part II. Participatory local scenario development. *Futures* 38(3):285-311.
13
14
15
16
17 Kok, K., 2009. The potential of Fuzzy Cognitive Maps for semi-quantitative scenario
18 development, with an example from Brazil. *Global Environmental Change-Human and Policy*
19 *Dimensions* 19, 122-133.
20
21
22
23
24 Leenhardt, D., Therond, O., Cordier, M.O., Gascuel-Odoux, C., Reynaud, A., Durand, P., Bergez,
25 J.E., Clavel, L., Masson, V., Moreau, P., 2012. A generic framework for scenario exercises
26 using models applied to water-resource management. *Environmental Modelling and Software*.
27
28
29
30
31 Lippe, M., Minh, T. T., Neef, A., Hilger, T., Hoffmann, V., Lam, N. T., Cadisch, G., 2011.
32 Building on qualitative datasets and participatory processes to simulate land use change in a
33 mountain watershed of Northwest Vietnam. *Environmental Modelling & Software*
34
35
36
37
38
39
40
41
42
43
44
45
46
47
48
49
50
51
52
53
54
55
56
57
58
59
60
61
62
63
64
65
- Lô-Pelzer, E., Bousset, L., Jeuffroy, M. H., Salam, M. U., Pinochet, X., Boillot, M., Aubertot, J. N., 2010a. SIPPOM-WOSR: a simulator for Integrated Pathogen POpulation Management of phoma stem canker on Winter OilSeed Rape: I. Description of the model. *Field Crops Research* 118(1):73-81.
- Lô-Pelzer, E., Aubertot, J. N., Bousset, L., Salam, M. U., Jeuffroy, M. H., 2010b. SIPPOM-WOSR: A Simulator for Integrated Pathogen POpulation Management of phoma stem canker on Winter Oil Seed Rape II. Sensitivity analysis. *Field Crops Research* 118(1):82-93.

- 1
2
3
4
5
6
7
8
9
10
11
12
13
14
15
16
17
18
19
20
21
22
23
24
25
26
27
28
29
30
31
32
33
34
35
36
37
38
39
40
41
42
43
44
45
46
47
48
49
50
51
52
53
54
55
56
57
58
59
60
61
62
63
64
65
- Nidumolu, U. B., van Keulen, H., Lubbers, M., Mapfumo, A., 2007. Combining Interactive Multiple Goal Linear Programming with an inter-stakeholder communication matrix to generate land use options. *Environmental Modelling & Software* 22(1):73-83.
- Pahl-Wostl, C., 2008, Participation in Building Environmental Scenarios, in: *Environmental Futures. The Practice of Environmental Scenario Analysis* (J. Alcamo, ed.), Elsevier, Amsterdam, The Netherlands, pp. 105-122.
- Parker, P., Letcher, R., Jakeman, A., Beck, M. B., Harris, G., Argent, R. M., Hare, M., Pahl-Wostl, C., Voinov, A., Janssen, M., Sullivan, P., Scoccimarro, M., Friend, A., Sonnenshein, M., Baker, D., Matejicek, L., Odulaja, D., Deadman, P., Lim, K., Larocque, G., Tarikhi, P., Fletcher, C., Put, A., Maxwell, T., Charles, A., Breeze, H., Nakatani, N., Mudgal, S., Naito, W., Osidele, O., Eriksson, I., Kautsky, U., Kautsky, E., Naeslund, B., Kumblad, L., Park, R., Maltagliati, S., Girardin, P., Rizzoli, A., Mauriello, D., Hoch, R., Pelletier, D., Reilly, J., Olafsdottir, R., Bin, S., 2002. Progress in integrated assessment and modelling. *Environmental Modelling & Software* 17(3):209-217.
- Patel, M., Kok, K., Rothman, D. S., 2007. Participatory scenario construction in land use analysis: an insight into the experiences created by stakeholder involvement in the Northern Mediterranean. *Land Use Policy* 24(3):546-561.
- Pedersen, E. K., Grant, W. E., 2004. Sage Grouse Populations in Southeastern Idaho, U.S.A.: Effect of Sheep Grazing and Fire, in: *Mediated Modeling. A System Dynamics Approach to Environmental Consensus Building*. (M. van den Belt, ed.), Island Press, Washington D.C., U.S.A, pp. 187-204.
- Peterson, T. R., Kenimer, A., Grant, W. E., 2004. Using Mediated Modeling to Facilitate Collaborative Learning Among Residents of the San Antonio Watershed, Texas, U.S.A, in: *Mediated Modeling: a System Dynamics Approach to Environmental Consensus Building* (M. van den Belt, ed.), Island Press, Washington D.C., U.S.A, pp. 136-163.

- 1
2
3
4
5
6
7
8
9
10
11
12
13
14
15
16
17
18
19
20
21
22
23
24
25
26
27
28
29
30
31
32
33
34
35
36
37
38
39
40
41
42
43
44
45
46
47
48
49
50
51
52
53
54
55
56
57
58
59
60
61
62
63
64
65
- Pollino, C.A., Woodberry, O., Nicholson, A., Korb, K., Hart, B.T., 2007. Parameterisation and evaluation of a Bayesian network for use in an ecological risk assessment. *Environmental Modelling & Software* 22:1140-1152.
- Primdahl, J., 1999. Agricultural landscapes as places of production and for living in owner's versus producer's decision making and the implications for planning. *Landscape and Urban Planning* 46(1-3):143-150.
- R Development Core Team, 2009. R: A language and environment for statistical computing, reference index version 2.2.1. R Foundation for Statistical Computing, Vienna, Austria. ISBN 3-900051-07-0, URL <http://www.R-project.org>.
- Reed, M. S., 2008. Stakeholder participation for environmental management: a literature review. *Biological Conservation* 141(10):2417-2431.
- Rouxel, T., Penaud, A., Pinochet, X., Brun, H., Gout, L., Delourme, R., Schmit, J., Balesdent, M. H., 2003. A 10-year survey of populations of *Leptosphaeria maculans* in France indicates a rapid adaptation towards the Rlm1 resistance gene of oilseed rape. *European Journal of Plant Pathology* 109(8):871-881.
- Schneider, O., Roger-Estrade, J., Aubertot, J. N., Doré, T., 2006. Effect of seeders and tillage equipment on vertical distribution of oilseed rape stubble. *Soil & Tillage Research* 85(1-2):115-122.
- Souchere, V., Millair, L., Echeverria, J., Bousquet, F., Le Page, C., Etienne, M., 2010. Co-constructing with stakeholders a role-playing game to initiate collective management of erosive runoff risks at the watershed scale. *Environmental Modelling & Software* 25(11):1359-1370.
- Sprague, S. J., Marcroft, S. J., Hayden, H. L., Howlett, B. J., 2006. Major gene resistance to blackleg in *Brassica napus* overcome within three years of commercial production in southeastern Australia. *Plant Disease* 90(2):190-198.

- 1 Therond, O., Belhouchette, H., Janssen, S., Louhichi, K., Ewert, F., Bergez, J. E., Wery, J.,
2 Heckelei, T., Olsson, J. A., Leenhardt, D., Ittersum, M. v., 2009. Methodology to translate
3 policy assessment problems into scenarios: the example of the SEAMLESS integrated
4 framework. *Environmental Science & Policy* 12(5):619-630.
5
6
7
8
9 Tompkins, E. L., Few, R., Brown, K., 2008. Scenario-based stakeholder engagement:
10 incorporating stakeholders preferences into coastal planning for climate change. *Journal of*
11 *Environmental Management* 88(4):1580-1592.
12
13
14
15
16 Tress, B., Tress, G., 2003. Scenario visualisation for participatory landscape planning - a study
17 from Denmark. *Landscape and Urban Planning* 64(3):161-178.
18
19
20
21 van den Belt, M., Kenyan, J. R., Krueger, E., Maynard, A., Roy, M. G., Raphael, I., 2010. Public
22 sector administration of ecological economics systems using mediated modelling. *Ecological*
23 *Economics Reviews* 1185:196-210.
24
25
26
27
28 van Notten, P. W. F., 2005. *Writing on the Wall: Scenario development in Times of Discontinuity.*
29 Maastricht University, Maastricht, pp. 225.
30
31
32
33 van Vliet, M., Kok, K., Veldkamp, T., 2010. Linking stakeholders and modellers in scenario
34 studies: The use of Fuzzy Cognitive Maps as a communication and learning tool. *Futures*
35 42:1-14.
36
37
38
39
40 Vayssieres, J., Vigne, M., Alary, V., Lecomte, P., 2011. Integrated participatory modelling of
41 actual farms to support policy making on sustainable intensification. *Agricultural Systems*
42 104(2):146-161.
43
44
45
46
47
48 Videira, N., Lopes, R., Antunes, P., Santos, R., Casanova, J.L., 2012. Mapping Maritime
49 Sustainability Issues with Stakeholder Groups. *Systems Research and Behavioral Science*
50 29:596-619.
51
52
53
54
55 Voinov, A., Gaddis, E. J. B., 2008. Lessons for successful participatory watershed modeling: A
56 perspective from modeling practitioners. *Ecological Modelling* 216(2):197-207.
57
58
59
60
61
62
63
64
65

1 Voinov, A., Bousquet, F., 2010. Modelling with stakeholders. Environmental Modelling &
2 Software 25(11):1268-1281
3

4 Wallerstein, N., 1999, Power between evaluator and community: research relationships within
5 New Mexico's healthier communities, Social Science & Medicine 49(1):39-53.
6
7

8
9 Walz, A., Lardelli, C., Behrendt, H., Gret-Regamey, A., Lundstrom, C., Kytzia, S., Bebi, P., 2007,
10 Participatory scenario analysis for integrated regional modelling, Landscape and Urban
11 Planning 81(1/2):114-131.
12
13
14
15
16
17
18
19
20
21
22
23
24
25
26
27
28
29
30
31
32
33
34
35
36
37
38
39
40
41
42
43
44
45
46
47
48
49
50
51
52
53
54
55
56
57
58
59
60
61
62
63
64
65

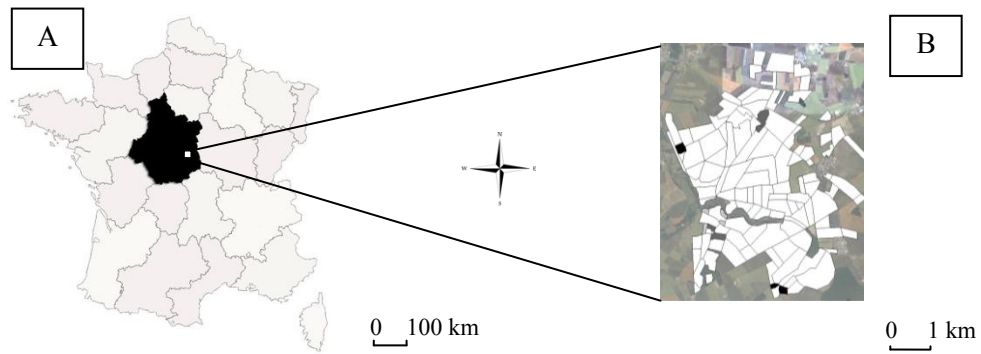


Figure 1. Location of (A) study site (white rectangle) and (B) landscape modelling support (white: cropped lands; black: uncropped lands, i.e. farmhouses; forests; fallow lands)

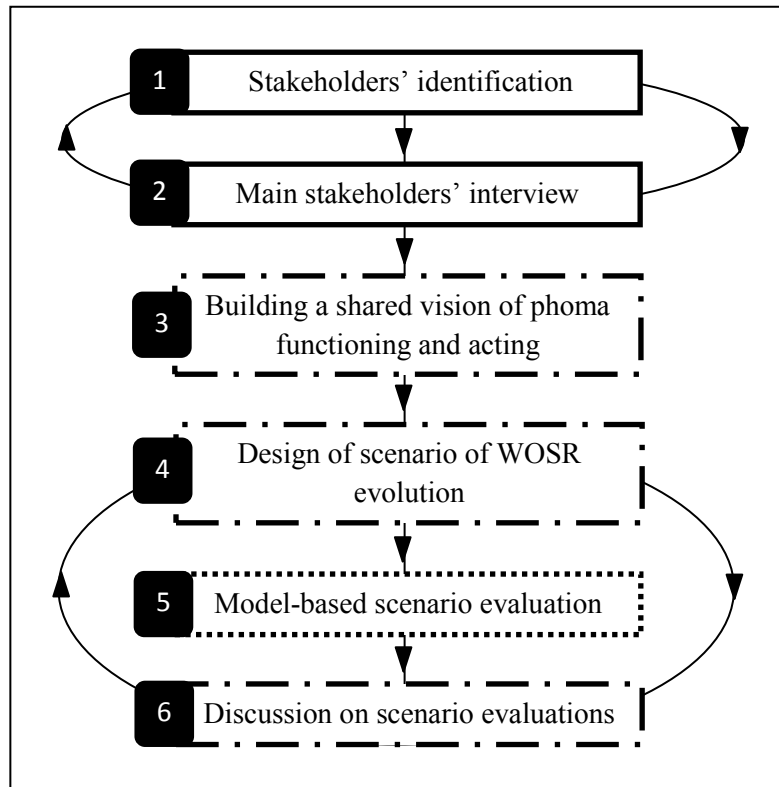


Figure 2. Schematic representation of the methodological approach developed in this study. Circular arrows represent feedback loops.

Box lines reflect the involvement of stakeholders in the different steps: boxes bordered by dotted lines indicate no interaction with stakeholders; boxes bordered by solid lines represent involvement of some stakeholders, with information derived from other sources (e.g. literature, national statistics); boxes bordered by dashed+dotted lines represent participatory workshops.

Table 1

Variable	Value
WOSR frequency	31%
Sowing dates	from 22/08 to 09/09; about 86% of WOSR areas sown between 25/08 and 04/09
Mean sowing densities	44 seeds.m ⁻² for hybrids and 62 seeds.m ⁻² for lines
Nitrogen fertilisation	13% of WOSR areas with organic nitrogen fertilisation at sowing
Cultivars	19% of WOSR areas sown with Rlm7-cultivars; 75% of WOSR areas sown with high level of quantitative resistance cultivars; 5% with cultivars with a low level of quantitative resistance; 1% of WOSR areas sown with susceptible cultivars
Tillage after WOSR harvest	28% of WOSR mouldboard ploughed after harvest; 21% with one stubble breaking operation, followed by one harrow operation and one chisel operation; 21% with one stubble breaking operation only; 12% with one harrow operation only; 18% with one stubble breaking operation followed by one chisel operation (7%), one harrow operation (7%) or one stubble breaking operation (4%)
Autumn application of Fungicide/growth regulator	On 63% of WOSR areas

Table 1. Main characteristics of reference situation of the study area in “Centre region” (France), based on farmers’ interviews about their cropping practices during the period 2004-2008

Table 2

Type of stakeholder	Step 2. Interviews	Step 3. Scheme building	Step 4. Scenario design	Step 6. Scenario result discussion
Decision makers				
Farmers	-	1	1	1
Crop collectors	1	1	2	2 (<i>1</i>)
Crop breeder	-	2	0	0
Specialist Technical Organization	2	2	0	<i>1</i>
Extension and advisory services	1	4	2	1
Policy makers	-	1	1	0
Other stakeholders				
Researchers	-	5	3	3
Total	4	15	8	7

Table 2. Type and number of stakeholders attending to the four steps of the method stakeholders were involved in (c.f. Figure 2 and paragraph 3.1. for details on the types of stakeholders). Italics underline the participation of a new stakeholder from an organization that had already attended to a previous workshop.

Table 3

Main trend	Context change	Main variable changed	Other changed variables
A. Increase of WOSR areas (in comparison with the reference situation)	Present economic trend; biofuel production increase	Crop sequences	Cultivars, tillage, sowing dates, nitrogen fertilisation frequency, fungicide frequency, climate
B. Decrease of WOSR areas (in comparison with the reference situation)	WOSR net return decrease	Crop sequences	Nitrogen fertilisation frequency, fungicide frequency, climate
	Nitrate regulation change, restricting time-windows for tillage Policy change to promote longer crop rotations		
C. Increase of areas with mouldboard ploughing after WOSR harvest	Overcome of currently used qualitative resistance (RlmX) Banning of glyphosate	Tillage frequency after WOSR harvest	WOSR frequency, nitrogen fertilization, fungicide frequency, climate

Table 3. Main characteristics of the three trends collectively designed during the first workshop
WOSR: Winter Oilseed Rape; RlmX: specific resistance currently cropped; s.m⁻²: seeds per square meter

Table 4

Variable	Trend A: Increase of WOSR acreages	Trend B: Decrease of WOSR acreages	Trend C: Increase of mouldboard ploughing after WOSR cultivation
WOSR frequency -% of total area-	33; 42; 50%	26.7; 28.9; 30%	30; 33; 42%
Sowing dates	From 15/08 to 05/09 (peak between 20 and 30/08)	Reference values	Reference values
Mean sowing densities	45 s.m ⁻² for line cultivars; 35 s.m ⁻² for hybrid cultivars	45 s.m ⁻² for line cultivars; 35 s.m ⁻² for hybrid cultivars	45 s.m ⁻² for line cultivars; 35 s.m ⁻² for hybrid cultivars
Nitrogen fertilisation - % of total area- (on shallow; deep soils)	10% (20; 0); 22.5% (35; 10); 35% (50; 20)	10% (20; 0); 22.5% (35; 10); 35% (50; 20)	10% (20; 0); 22.5% (35; 10); 35% (50; 20)
Cultivars	100% RlmX-cultivars; 100% with high partial resistant cultivars; 50% RlmX and 50% of high partial resistant cultivars	Reference proportions for RlmX and non-RlmX cultivars	100% of high partial-resistant cultivars
Tillage	0; 10; 20% of WOSR acreages	Reference values	30; 40; 50% of WOSR acreages
Fungicide	On 10% of WOSR acreages if wet and warm climate option; 0 otherwise	On 10% of WOSR acreages if wet and warm climate option; 0 otherwise	On 10% of WOSR acreages if wet and warm climate option; 0 otherwise
Weather	Current; warm and wet	Current; warm and wet	Current; warm and wet
Number of scenarios	162	18	54

Table 4. Characteristics of the various scenarios constructed by participants of the second workshop

WOSR: Winter Oilseed Rape; reference: values of reference situation; current weather: 2003-2008. Total number of scenarios per trend is obtained by multiplying the number of possibilities for each variable

Figure3



Figure 3. Example of one year-random cultivar allocation (3 replicates of the same scenario).
Cv : cultivar ; WOSR: Winter OilSeed Rape

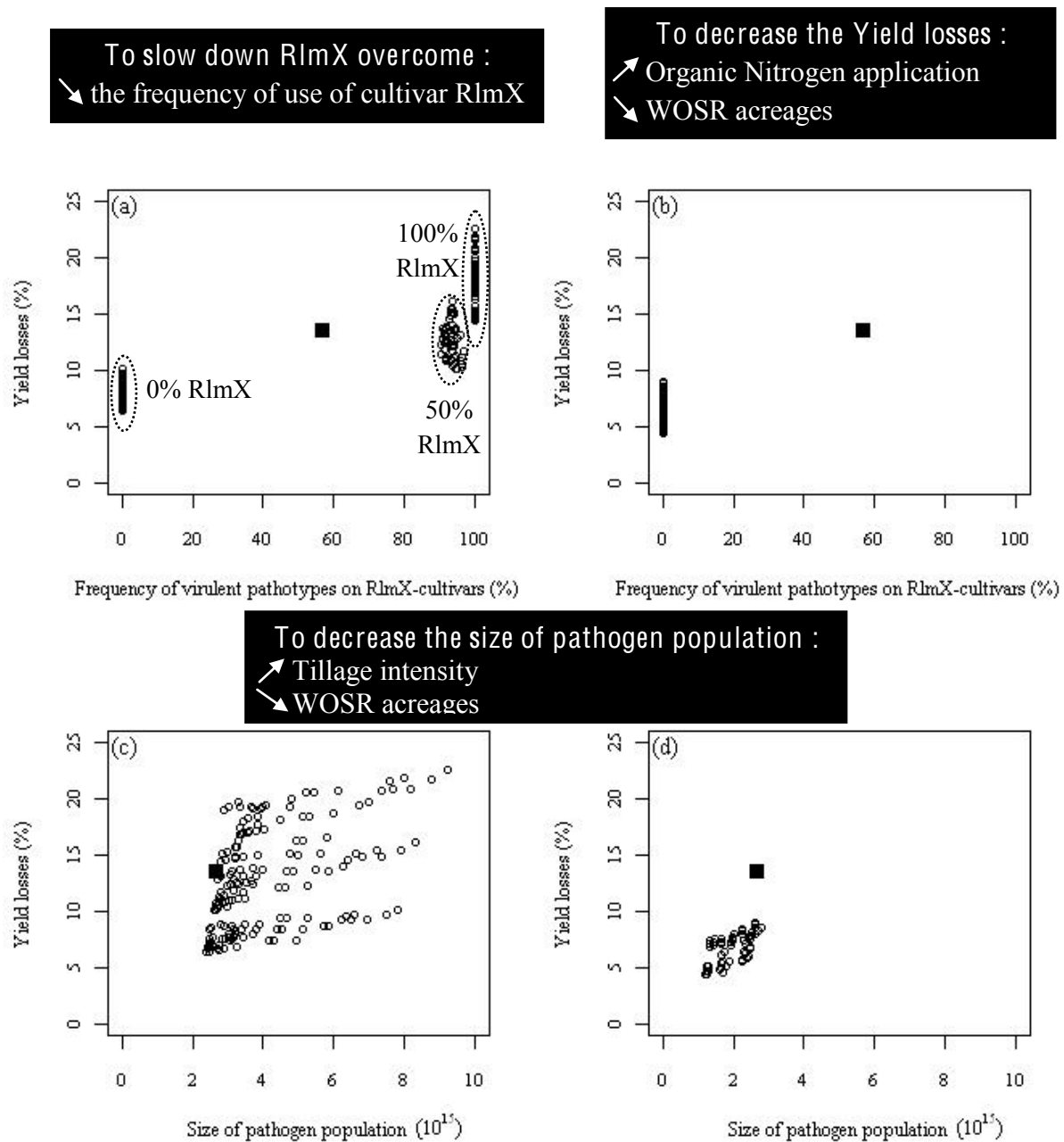


Figure 4. Scenario simulation results and their main explanatory variables (only one replicate presented): Yield losses depending on frequency of virulent pathotypes on RlmX-cultivar (figures a, b) and size of total pathogen population (figures c, d) for trends A and C. Trend A (162 scenarios): fig. a and c; Trend C (54 scenarios): fig. c and d. Round symbols represent scenarios of trends A and C; square symbols are for the reference situation (see Tables 1 and 4 for description). Main cropping variables (i.e. explanatory variables) impacting outputs are summarized in the black boxes.

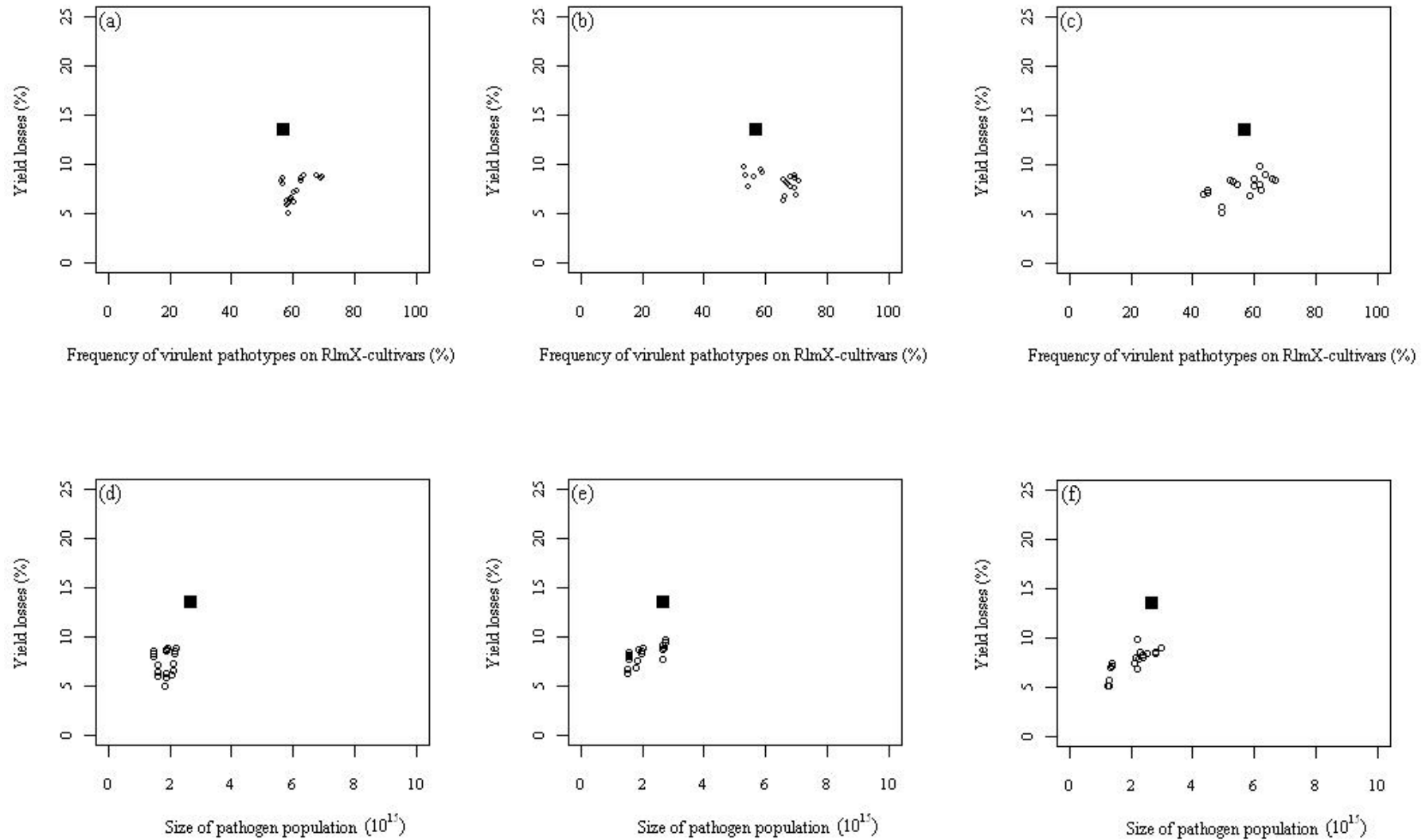


Figure 5. Scenarios simulation results (three replicates): Yield losses depending on Frequency of virulent pathotypes on RlmX-cultivar (figures a, b, c) and Size of total pathogen population (figures d, e, f) for trend B. Trend B (18 scenarios): Decrease of WOSR areas in link with economical/political changes. Round symbols hold for scenarios of trend B; squared symbol holds for reference situation.