



HAL
open science

A Novel Type of Peptidoglycan-binding Domain Highly Specific for Amidated D-Asp Cross-bridge, Identified in *Lactobacillus casei* Bacteriophage Endolysins

Krzysztof Regulski, Pascal Courtin, Saulius Kulakauskas, Marie-Pierre Chapot-Chartier

► To cite this version:

Krzysztof Regulski, Pascal Courtin, Saulius Kulakauskas, Marie-Pierre Chapot-Chartier. A Novel Type of Peptidoglycan-binding Domain Highly Specific for Amidated D-Asp Cross-bridge, Identified in *Lactobacillus casei* Bacteriophage Endolysins. *Journal of Biological Chemistry*, 2013, 288 (28), pp.20416 - 20426. 10.1074/jbc.M112.446344 . hal-01003290

HAL Id: hal-01003290

<https://hal.science/hal-01003290>

Submitted on 29 May 2020

HAL is a multi-disciplinary open access archive for the deposit and dissemination of scientific research documents, whether they are published or not. The documents may come from teaching and research institutions in France or abroad, or from public or private research centers.

L'archive ouverte pluridisciplinaire **HAL**, est destinée au dépôt et à la diffusion de documents scientifiques de niveau recherche, publiés ou non, émanant des établissements d'enseignement et de recherche français ou étrangers, des laboratoires publics ou privés.

Copyright

A Novel Type of Peptidoglycan-binding Domain Highly Specific for Amidated D-Asp Cross-bridge, Identified in *Lactobacillus casei* Bacteriophage Endolysins*

Received for publication, December 18, 2012, and in revised form, April 23, 2013. Published, JBC Papers in Press, June 3, 2013, DOI 10.1074/jbc.M112.446344

Krzysztof Regulski^{†§1}, Pascal Courtin^{‡§}, Saulius Kulakauskas^{†§}, and Marie-Pierre Chapot-Chartier^{†§2}

From [†]INRA, UMR1319 Micalis and [‡]AgroParisTech, UMR Micalis, 78352 Jouy-en-Josas, France

Background: Peptidoglycan hydrolases, including bacterial autolysins and bacteriophage endolysins, contain generally a cell wall-binding domain (CWBD), responsible for their high affinity and specificity toward target cell walls.

Results: Two *Lactobacillus casei* endolysins lyse only bacterial cells with a D-Asn cross-bridge in their peptidoglycan.

Conclusion: The CWBD of these two endolysins recognizes specifically peptidoglycan with a D-Asn cross-bridge.

Significance: This CWBD is a novel type of peptidoglycan-binding domain.

Peptidoglycan hydrolases (PGHs) are responsible for bacterial cell lysis. Most PGHs have a modular structure comprising a catalytic domain and a cell wall-binding domain (CWBD). PGHs of bacteriophage origin, called endolysins, are involved in bacterial lysis at the end of the infection cycle. We have characterized two endolysins, Lc-Lys and Lc-Lys-2, identified in prophages present in the genome of *Lactobacillus casei* BL23. These two enzymes have different catalytic domains but similar putative C-terminal CWBDs. By analyzing purified peptidoglycan (PG) degradation products, we showed that Lc-Lys is an *N*-acetylmuramoyl-L-alanine amidase, whereas Lc-Lys-2 is a γ -D-glutamyl-L-lysyl endopeptidase. Remarkably, both lysins were able to lyse only Gram-positive bacterial strains that possess PG with D-Ala⁴→D-Asx-L-Lys³ in their cross-bridge, such as *Lactococcus casei*, *Lactococcus lactis*, and *Enterococcus faecium*. By testing a panel of *L. lactis* cell wall mutants, we observed that Lc-Lys and Lc-Lys-2 were not able to lyse mutants with a modified PG cross-bridge, constituting D-Ala⁴→L-Ala(L-Ala/L-Ser)-L-Lys³; moreover, they do not lyse the *L. lactis* mutant containing only the nonamidated D-Asp cross-bridge, *i.e.* D-Ala⁴→D-Asp-L-Lys³. In contrast, Lc-Lys could lyse the ampicillin-resistant *E. faecium* mutant with 3→3 L-Lys³-D-Asn-L-Lys³ bridges replacing the wild-type 4→3 D-Ala⁴-D-Asn-L-Lys³ bridges. We showed that the C-terminal CWBD of Lc-Lys binds PG containing mainly D-Asn but not PG with only the nonamidated D-Asp-containing cross-bridge, indicating that the CWBD confers to Lc-Lys its narrow specificity. In conclusion, the CWBD characterized in this study is a novel type of PG-binding domain targeting specifically the D-Asn interpeptide bridge of PG.

Peptidoglycan hydrolases (PGHs)³ synthesized by Gram-positive bacteria and their bacteriophages are able to degrade the protective cell wall peptidoglycan (PG) that surrounds the bacterial cytoplasmic membrane. PG is a macromolecule consisting of glycan chains made of alternating β -1,4-linked *N*-acetylglucosamine (GlcNAc) and *N*-acetylmuramic acid (MurNAc) cross-linked by peptide chains, the composition of which varies between bacterial species. Bacterial PGHs or autolysins are required for cell wall remodeling during bacterial cell growth and division (1, 2). Bacteriophage PGHs, named endolysins, are synthesized in phage-infected cells at the end of the multiplication cycle leading to bacterial lysis and release of phage progeny (3, 4). Most PGHs have a modular structure with multiple domains, including a catalytic domain with PG hydrolyzing activity and a cell wall-binding domain (CWBD) that targets the enzyme specifically to the cell wall. The ligands of CWBDs may be structural motifs present either in PG or in secondary cell wall polymers, including polysaccharides or teichoic acids that decorate PG (3).

Endolysins usually lack a signal peptide for their export and therefore rely on the synthesis of holins, which are able to insert into the cytoplasmic membrane and make pores (5). Most often, their catalytic domain is located at the N terminus and their CWBD at the C terminus (6). Generally, the catalytic domains found in endolysins belong to the same families as those encountered in bacterial PGHs (2). In contrast, certain endolysin CWBDs do not display any sequence similarity with well characterized CWBDs found in bacterial PGHs such as LysM or SH3b domains. CWBDs are considered to confer to endolysins high affinity and high specificity for their target bacteria (7).

Endolysins from bacteriophages infecting Gram-positive bacteria can lyse bacteria from the outside and thus have been proposed as alternatives for preservatives and antibiotics used to destroy pathogens in food and medical applications (3, 4, 6, 8). Because of their high affinity for the cell wall, endolysin

* This work was supported in part by INRA and Région Ile de France and was an associated project from the Marie Curie FP7 Initial Training Network Cross Talk (Grant Agreement 21553-2).

¹ Recipient of a fellowship from INRA.

² To whom correspondence should be addressed: INRA, Micalis, Bâtiment 222, Domaine de Vilvert, 78352 Jouy-en-Josas Cedex, France. Tel.: 33-1-34-65-22-68; Fax: 33-1-34-65-20-65; E-mail: Marie-Pierre.Chapot@jouy.inra.fr.

³ The abbreviations used are: PGH, peptidoglycan hydrolase; PG, peptidoglycan; MurNAc, *N*-acetylmuramic acid; RP-HPLC, reverse-phase high performance-liquid-chromatography; CWBD, cell wall-binding domain; LAB, lactic acid bacterium; iGln, isoglutamine.

TABLE 1
Bacterial strains and plasmids

Strains and plasmids	Characteristic(s)	Source or Ref.
<i>L. casei</i> BL23	Wild type strain	44
<i>L. lactis</i> MG1363	Plasmid-free and prophage-cured derivative of <i>L. lactis</i> NCDO712	45
NZ9000	MG1363 carrying <i>pepN::nisRK</i>	46
VES4254	MG1363 <i>asnH</i> mutant, Em ^r	22
VES4240	MG1363 <i>aslA</i> mutant carrying <i>S. pneumoniae murMN</i> genes on a plasmid; VES4240 (<i>aslA/pmurMN+</i>), Em ^r Cm ^r	23
VES4289	MG1363 <i>oatA</i> mutant, Em ^r	47
VES4534	MG1363 <i>pgdA</i> mutant, Em ^r	47
VES2065	MG1363 <i>dacB</i> mutant, Em ^r	20
Δ <i>dacA</i> mutant	NZ9000 <i>dacA</i> mutant	48
<i>E. faecium</i> D344S	Ampicillin-sensitive strain	24
M512	Spontaneous mutant of D344S strain highly resistant to ampicillin	24
<i>E. coli</i> TOP 10	<i>F⁻ mcrA Δ(mrr-hsdRMS-mcrBC) φ80lacZΔM15 ΔlacX74 nupG recA1 araD139 Δ(ara-leu)7697 galE15 galK16 rpsL(StrR) endA1 λ[σ₇₀π][[i]⁻</i>	Invitrogen
TIL 1279	TOP 10 strain containing pBAD-Lc-Lys plasmid, Amp ^r	This work
PAR 040	TOP 10 strain containing pBAD-Lc-LysCD plasmid, Amp ^r	This work
PAR 041	TOP 10 strain containing pBAD-Lc-LysBD plasmid, Amp ^r	This work
PAR 042	TOP 10 strain containing pBAD-Lc-Lys2 plasmid, Amp ^r	This work
Plasmids		
pBAD/ <i>myc</i> -His B	pBR322-derived expression vector carrying the <i>araBAD</i> promoter (PBAD) and allowing C-terminal <i>myc</i> -His ₆ tag fusion, Amp ^r	Invitrogen
pBAD/His B	pBR322-derived expression vector carrying the <i>araBAD</i> promoter (PBAD) and allowing N-terminal His ₆ tag fusion, Amp ^r	Invitrogen
pBAD-Lc-Lys	pBAD/ <i>myc</i> -His B derivative carrying <i>lcabl_11280</i> gene	This work
pBAD-Lc-LysCD	pBad/His B derivative carrying truncated <i>lcabl_11280</i> gene encoding catalytic domain	This work
pBAD-Lc-LysBD	pBad/His B derivative carrying truncated <i>lcabl_11280</i> gene encoding cell wall-binding domain	This work
pBAD-Lc-Lys2	pBad/HisB derivative carrying <i>lcabl_10020</i> gene	This work

CWBDs may also have biotechnological applications, for example, identification of bacteria by specific staining (9). Also, after fusion with a protein of interest, they could allow this protein to be displayed at the bacterial surface with potential applications such as vaccine or biocatalyst development (10).

Lactobacillus casei is a Gram-positive lactic acid bacterium (LAB) used in dairy fermentations, and certain strains have probiotic properties (*i.e.* show health-promoting activities for humans and animals). This species has also been proposed as a mucosal delivery vehicle for therapeutic molecules or antigens (11). For such applications, the display of proteins, including antigens by noncovalent anchoring at the surface of LAB, considered as generally recognized as safe organisms, constitutes an attractive alternative to construction of genetically modified organisms (12). Because of their high affinity for the cell wall, endolysin CWBDs constitute potential anchoring domains (13).

By searching *in silico* the PGH complement of *L. casei* BL23 in its genome sequence (14), we identified two prophage-encoded endolysins named Lc-Lys and Lc-Lys-2. Both endolysins comprise two domains. Although their C-terminal domains share high amino acid sequence identity (68%), their N-terminal catalytic domains belong to different families of amidases according to Pfam classification (15).

In this study, we first determined the hydrolytic specificity of both endolysins by identifying degradation products of purified *L. casei* PG. We found that Lc-Lys is actually an *N*-acetylmuramoyl-L-alanine amidase, and Lc-Lys-2 is a γ -D-glutamyl-L-lysyl endopeptidase. Both lysins were able to lyse specifically bacterial cells containing PG with an amidated D-Asn cross-

bridge, including food LAB such as *Lactococcus lactis* and also the pathogen *Enterococcus faecium*. Moreover, we showed that their C-terminal CWBD exhibits an original and not previously described binding specificity toward amidated D-Asp (*i.e.* D-Asn) of PG cross-bridge.

EXPERIMENTAL PROCEDURES

Bacterial Strains, Plasmids, and Culture Conditions—The bacterial strains and plasmids used in this study are listed in Table 1. *Escherichia coli* strains were grown in Luria-Bertani (LB) medium (Difco) with aeration at 37 °C. *L. casei* BL23 was grown in MRS broth (Difco) at 37 °C. *L. lactis* strains were grown in M17 medium (Difco) supplemented with 0.5% (w/v) glucose (M17Glc) at 30 °C. Antibiotic concentrations used were 100 μg/ml ampicillin for *E. coli* and 2.5 μg/ml erythromycin or 5 μg/ml chloramphenicol for *L. lactis*. Growth was monitored by optical density measurement at 600 nm (OD₆₀₀) with a spectrophotometer (Spectronic 20 Genesys). *Streptococcus thermophilus* was grown in M17Glc; *Lactobacillus fermentum* was grown in MRS, enterococci, and other streptococci, and *Listeria* and *Staphylococcus* strains were grown in BHI (BD Biosciences) and bacilli in LB medium under shaking. *E. faecium* mutant M512 was grown in BHI broth in the presence of 100 μg/ml ampicillin.

DNA Techniques and Electrotransformation—General molecular biology techniques were used as described previously (16). Electrotransformation of *E. coli* was performed as described previously (17) with a Gene-Pulser apparatus (Bio-Rad). PCRs were performed with the Phusion high fidelity DNA polymerase (Finnzymes) using a thermocycler (Mastercycler gradient,

Peptidoglycan-binding Domain Specific for D-Asn Cross-bridge

TABLE 2
Primers used in this study for cloning and validation

Primer name	Sequence ^{a,b}	Plasmid vector
Primers used for the construction of overexpression plasmids		
LcLys-F	5'-CATGCCATGGCAATGAGTTATACCATCAAT-3' (NcoI)	pBAD/myc-His B
LcLys-R	5'-GCTCTAGAGCAAATGGATTGATCGAACTAATGCC-3' (XbaI)	
CD-F	5'-CCGCTCGAGCATGAGTTATACCATCAATAAAG-3' (XhoI)	pBad/His B
CD-R	5'-GGAATTCACAAGTTACAATTGCTGTGGAC-3' (EcoRI)	
BD-F	5'-CCGCTCGAGATCTGCAGATGATGCATCTAAGAGCGCACTAG-3'(XhoI)	pBad/His B
BD-R	5'-CGAATTCGCTCTAGATCAITTTTCAAATTTGGGATGTGACC ATGCTCCAAATGGATTGATCGAACTAATGCCG-3' (EcoRI)	
LcLys2-F	5'-CCGCTCGAGAAGCATTATGATTGGTTCGATCG-3' (XhoI)	pBad/His B
LcLys2-R	5'-CGAATTCGCTCTAGATCAITTTTCAAATTTGGGATGTGACC CATGCTCCAAATGGGCTGACAGAACCGATGC-3' (EcoRI)	
Primers used for the validation and sequencing of overexpression plasmids		
pBad-F	5'-ATGCCATAGCATTTTTATCC-3'	pBad/His B
pBad-R	5'-GATTTAATCTGATCAGG-3'	pBAD/myc-His B

^a Restriction sites are underlined in the sequences and indicated in brackets.

^b *Strep*-tagII-encoding sequence is overlaid in gray.

Eppendorf). The primers used in this study were purchased from Eurogentec and are listed in Table 2. Constructed plasmids were extracted from *E. coli* TOP10 using QIAprep spin miniprep kit (Qiagen).

Expression in *E. coli* and Purification of Tagged Proteins—Lc-Lys with a C-terminal His₆ tag, Lc-Lys N-terminal catalytic domain (Lc-LysCD, amino acids 1–198) with an N-terminal His₆ tag, Lc-Lys C-terminal domain (Lc-LysBD, amino acids 180–350) and Lc-Lys-2 with both N-terminal His₆ tag and C-terminal *Strep*-tagII (Fig. 1A) were expressed in *E. coli* TOP10 with pBAD/His B or pBAD/myc-HisB expression vector as indicated in Table 1. DNA fragments were amplified by PCR from *L. casei* BL23 DNA using primers listed in Table 2. *Strep*-tagII was oligonucleotide-encoded and fused to the selected gene by PCR. The PCR fragments were then cloned into NcoI and XbaI restriction sites of pBAD/myc-HisB vector or into XhoI and EcoRI sites of pBAD/HisB. Production of tagged proteins (Lc-Lys, Lc-Lys-2, and truncated forms Lc-LysCD and Lc-LysBD) was induced in *E. coli* TOP10 carrying the recombinant pBAD plasmids with 0.2% L-arabinose. Bacteria were harvested 4 h after addition of L-arabinose by centrifugation and disrupted using a BAZIC Z cell disruptor (Constant Systems Ltd.) at a pressure of 1600 bars. The recombinant Lc-Lys-2, Lc-LysCD, and Lc-LysBD were purified from soluble fractions, and Lc-Lys was purified from inclusion bodies with addition of 8 M urea to all buffers. Cell extracts were loaded onto a HisTrap HP 1-ml column (GE Healthcare) connected to an FPLC AKTA chromatography system (GE Healthcare), and proteins were eluted using a linear gradient of imidazole from 30 to 400 mM.

HisTrap fractions containing Lc-Lys and Lc-LysCD were desalted by Fast Desalting HR 10/10 column (GE Healthcare). Anion exchange chromatography was performed as a polishing step. Desalted samples were loaded onto a Mono Q 5/50 GL column (GE Healthcare) and eluted using a 0–250 mM linear gradient of NaCl in 20 mM Tris-HCl, pH 8.0.

HisTrap fractions containing Lc-Lys-2 and Lc-LysBD, which carry the *Strep*-tag II epitope, were loaded onto a 1-ml *Strep*-

Tactin Superflow Plus Cartridge (Qiagen) and were eluted by applying a step gradient of 2.5 mM desthiobiotin.

Purity of the recombinant proteins was monitored by SDS-PAGE. Purified proteins were then concentrated by ultrafiltration with Amicon Ultra-4 Centrifugal Filter Units (Millipore). Protein concentration was measured using the BCA method (BCA protein assay kit, Thermo Scientific). Pure proteins were stored at –80 °C.

SDS-PAGE and Zymogram—SDS-PAGE was performed with 15% (w/v) polyacrylamide separating gels. Gels were stained with GelCode Blue Stain Reagent (Thermo Scientific). Zymogram was performed to detect lytic activity as described previously (14, 18). Briefly, autoclaved bacteria (10 min at 110 °C) were used as enzyme substrates and were included at 0.4% (w/v) into polyacrylamide gels. After sample migration, the gels were washed in deionized water at room temperature and then incubated in 50 mM sodium phosphate buffer, pH 6.0, containing 0.1% (v/v) Triton X-100 overnight at 37 °C under gentle rocking. The gels were subsequently washed with deionized H₂O and then stained with methylene blue. Stained SDS-polyacrylamide gels and zymogram gels were digitized with a DuoScan T1200 scanner (Agfa).

PG Extraction—PG was extracted from *L. casei* BL23 and from *L. lactis* strains according to protocols described previously (14, 19).

Determination of the Hydrolytic Bond Specificity of Lc-Lys and Lc-Lys-2—Purified PG from *L. casei* BL23 (2 mg dry weight) was digested separately with 50 μg of recombinant Lc-Lys or Lc-Lys-2 for 18 h in 50 mM sodium phosphate buffer, pH 6.0, at 37 °C under rotation. Soluble fractions were reduced with sodium borohydride, and PG fragments were separated by reverse phase-HPLC (RP-HPLC) with an Agilent Infinity 1290 ultra-HPLC system on a Nucleodur C18 Pyramid column (150 × 2 mm, particle size, 1.8 μm) (Macherey-Nagel) at 50 °C. Muropeptides were eluted by a 1-min isocratic step of 10 mM ammonium phosphate buffer, pH 4.5 (buffer A), and then a 59-min linear gradient (0–20%) of methanol in buffer A. Peaks were analyzed without desalting by MALDI-TOF mass spectrometry (MS) using a Voyager-DE STR mass spectrometer (Applied Biosystems) as reported previously (20).

Assay of Lc-Lys and Lc-Lys-2 Activity on Autoclaved Bacterial Cells—Autoclaved cells were used as a substrate for measuring Lc-Lys and Lc-Lys-2 activity and were prepared as follows. Bacterial strains were grown in dedicated medium up to stationary phase. Bacteria were collected by centrifugation and autoclaved 10 min at 110 °C. They were then centrifuged at 5000 × g for 15 min at 4 °C, washed in sterile conditions with ice-cold PBS followed by distilled H₂O, and finally resuspended in distilled H₂O. Autoclaved cells were diluted in 25 mM sodium phosphate buffer, pH 6.0, to obtain an OD₆₀₀ of 0.6. Purified recombinant Lc-Lys or Lc-Lys-2 (3 μg/ml final concentration) was added in a final volume of 200 μl, and the OD₆₀₀ of the cell suspension was monitored in 96-well plates with a microplate reader (Tecan). The extent of bacterial lysis was expressed as the percentage decrease in OD₆₀₀.

Fluorescence Microscopy—*L. lactis* and *L. casei* cells were harvested from stationary phase cultures, washed twice with PBS, and treated for 10 min at 95 °C in 7.5% TCA solution. After

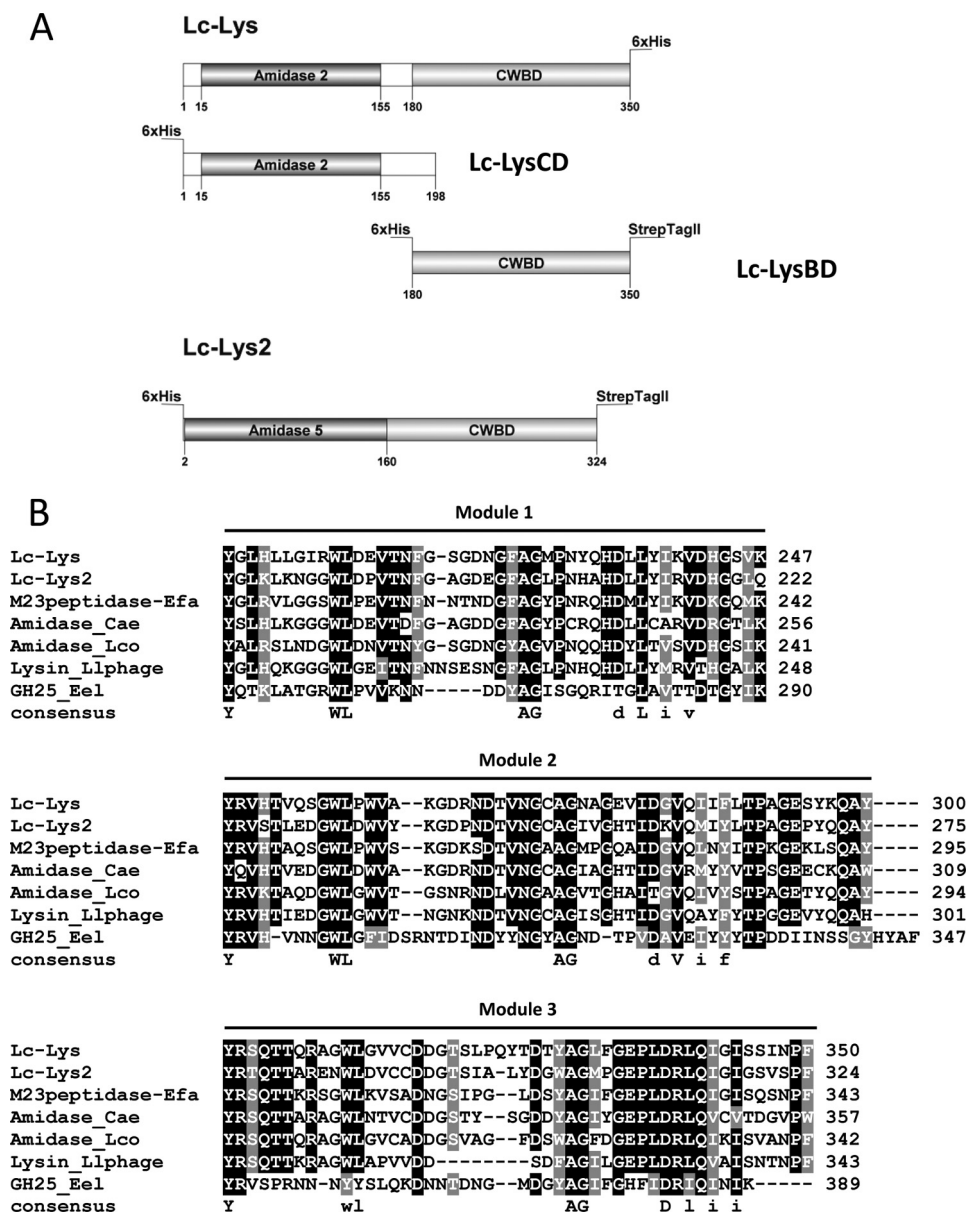


FIGURE 1. A, schematic representation of endolysins. Lc-Lys, Lc-Lys-2, and two truncated derivatives of Lc-Lys corresponding to its catalytic domain (Lc-LysCD) and its cell wall-binding domain (Lc-LysBD) are shown. Numbers refer to amino acid positions in the complete sequences. Amidase, catalytic domain according to Pfam designations; CD, catalytic domain; BD, binding domain; CWBD, cell wall-binding domain; His₆ tag and Strep-tagII, tags added to recombinant proteins. B, sequence alignments of the C-terminal CWBD of Lc-Lys and Lc-Lys-2 endolysins with the C-terminal region of other proteins. Enterolysin A was from *E. faecalis* (M23 peptidase_Efa) (AF249740); amidase was from *C. aerofaciens* (Amidase_Cae, COLAER_00250); amidase was from *L. coryniformis* (Amidase_Lco, LcortK3_01010004007); endolysin was from *L. lactis* bacteriophage 949 (LaPh949_gp055); and glycosylhydrolase family-like lysozyme was from *E. eligens* (EUBEL1_01316). Accession numbers correspond to those of the img database (<http://img.jgi.doe.gov/>). Multiple alignments were done with ClustalW. Black boxes, identity in at least 6 of the 7 sequences. Consensus sequence found in each of the three detected modules is indicated.

TCA treatment, cells were washed twice with PBS and then with 50 mM sodium phosphate buffer at pH 6.0. TCA-treated cells (1 ml at OD 1.0) were subsequently used for Lc-LysBD binding assays as described below. They were incubated with 30 μg of purified Strep-tagged Lc-LysBD recombinant protein for 60 min at 37 °C, washed three times with PBS, and incubated with a monoclonal antibody directed against Strep-tagII (IBA GmbH) (10 μg/ml in PBS containing 2% BSA) for 1 h at room temperature. After three washes with PBS, goat anti-mouse antibody conjugated to Alexa Fluor® 555 fluorescent dye (Cell Signaling Technology) diluted 1:400 in PBS containing 2% BSA was added for 1 h at room temperature in the dark. Bacteria

were washed three times with PBS. Cells were immobilized on microscope slides covered with a thin film of 1.5% agarose in H₂O and then examined by epifluorescence microscopy with a Leica DMRA2 microscope. Images were acquired by using a charge-coupled device camera. Images were analyzed with the ImageJ software to make overlays of bright field and fluorescent images.

Binding of Lc-LysBD to Purified PG—Peptidoglycan samples (200 μg) extracted from *L. casei* BL23, *L. lactis* MG1363, *L. lactis asnH*, and *L. lactis VES4240 (aslA/pmurMN+)* were resuspended in 500 μl of 50 mM sodium phosphate buffer, pH 6.0. Purified recombinant Lc-LysBD (15, 30, or 45 μg) was

Peptidoglycan-binding Domain Specific for D-Asn Cross-bridge

added to the PG suspensions in a final volume of 550 μ l and incubated in a ThermoMixer (Eppendorf) at 37 °C for 90 min under 600 rpm shaking speed. After incubation, the samples were centrifuged 10 min at 20,000 \times *g*, and the pellets were washed three times with cold PBS. The pellets were then resuspended in 40 μ l of denaturing buffer (50 mM Tris-HCl, pH 6.8, 2% SDS, 10% v/v, glycerol, 0.1% bromophenol blue, and 100 mM DTT), boiled for 5 min, and centrifuged for 10 min at 20,000 \times *g*. Supernatants containing solubilized material (9 μ l) were analyzed by SDS-PAGE with 15% polyacrylamide gels.

RESULTS

Sequence Analysis of *L. casei* BL23 Prophage Endolysins—By sequence similarity search with well characterized bacterial PGHs, we identified previously in the genome sequence of *L. casei* BL23 two prophage-encoded endolysins, Lc-Lys (encoded by *lcabl_11280*) and Lc-Lys-2 (encoded by *lcabl_10020*), each with a neighbor holin (14). Both of them are devoid of signal peptide and contain two domains (Fig. 1A).

The putative N-terminal catalytic domain of Lc-Lys contains Pfam PF01510 domain (*Amidase_2*), and the Lc-Lys-2 one contains Pfam PF05382 domain (*Amidase_5*), both of them predicting MurNAc-L-Ala-amidase specificity on the PG substrate. Lc-Lys exhibits high amino acid sequence identity (94%) with two previously described *L. casei* endolysins, PL-1 (21) and LysA2 (13). However, contradictory results were previously published regarding the hydrolytic specificity of these two endolysins with MurNAc-L-Ala-amidase specificity assigned to PL-1 (21) and D-Ala-D-Asp-endopeptidase specificity assigned to LysA2 (13), although both endolysins contain the same PF01510 (*Amidase_2*) catalytic domain. The C-terminal domain of LysA2 was shown to bind the *L. casei* cell wall (13), but the recognized motif was not identified.

The C-terminal domains of Lc-Lys and Lc-Lys-2 exhibit high sequence identity to each other (68%) and to the C-terminal domain of PL-1 and LysA2. In addition, sequence identity was found with the C-terminal part of numerous proteins found in sequence databases (Fig. 1B). These include the following: (i) enterolysin A from *Enterococcus faecalis*, a bacteriocin with lytic activity (67% identity); (ii) endolysins from bacteriophages infecting *L. lactis* (60% identity); (iii) several putative endolysins found in the genomes of LAB such as *Lactobacillus rhamnosus* or *Lactobacillus coryniformis* (90 and 65% identity, respectively) and of other Gram-positive species of the human intestinal microbiota such as *Collinsella aerofaciens* (63% identity); and (iv) PGH from *Eubacterium eligens* (35% identity), which is not prophage-encoded according to the genetic environment. From sequence alignment (Fig. 1B), it appears that the C-terminal domain of these proteins is composed of three repeated modules. Conservation of the sequences allowed us to deduce the following consensus sequence: YX(7,9)-WLX(9,17)AGX(5,6)(D/T)X(L/V/I)X(V/I/L/M/A)X(I/V/F/Y/T) present in the three related modules.

Hydrolytic Specificity of Lc-Lys and Lc-Lys-2 Endolysins toward *L. casei* PG—To determine the hydrolytic specificity of Lc-Lys and Lc-Lys-2 on purified PG, both proteins were tagged (Fig. 1A) and produced in *E. coli*. His₆-tagged Lc-Lys was puri-

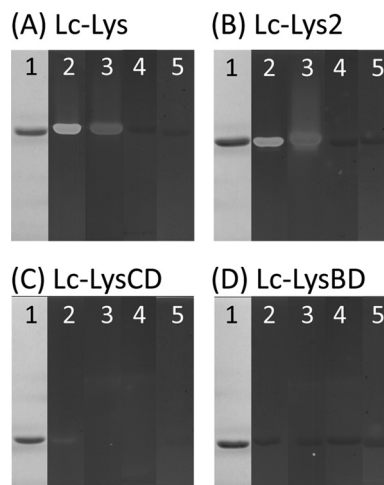


FIGURE 2. SDS-PAGE and zymogram analysis of purified recombinant endolysins and derivatives. A, Lc-Lys; B, Lc-Lys-2; C, Lc-Lys catalytic domain (Lc-LysCD); D, Lc-Lys binding domain (Lc-LysBD). After SDS-PAGE, gels were stained with Coomassie Blue (lanes 1). Zymogram assays of purified proteins were performed on autoclaved cells of *L. casei* BL23 (lanes 2), *L. lactis* MGI363 (lanes 3), *L. lactis asnH* (lanes 4), and *L. lactis asIA*(pmurMN+) (lanes 5).

fied to homogeneity by nickel affinity and anion exchange chromatographies, whereas Lc-Lys-2, which bears both His₆ and *Strep*-tagII tags, was purified by two-step affinity chromatography. In SDS-PAGE (Fig. 2, A and B, lane 1), purified recombinant Lc-Lys and Lc-Lys-2 migrated as 40- and 38-kDa proteins, respectively, as expected from the calculated mass of the tagged enzymes. Both of them displayed lytic activity in zymogram assay (Fig. 2, A and B, lane 2) on autoclaved *L. casei* cells used as substrate.

We then examined the hydrolytic specificity of recombinant pure Lc-Lys and Lc-Lys-2 on *L. casei*-purified PG. The PG fragments obtained by digestion with each endolysin were separated by RP-HPLC and analyzed by MALDI-TOF mass spectrometry. As shown on Fig. 3, B and C, the HPLC profiles were different, revealing distinct hydrolytic specificities for Lc-Lys and Lc-Lys-2. MS analysis of the major peaks and comparison of the obtained masses with the reference *L. casei* PG structure that we previously established (14) enabled us to identify peptides generated by each enzyme (Table 3) and to deduce their cleavage specificity (Fig. 3D). Lc-Lys has an *N*-acetylmuramoyl-L-alanine amidase specificity, whereas Lc-Lys-2 has a γ -D-glutamyl-L-lysyl endopeptidase specificity.

Activity of Lc-Lys and Lc-Lys-2 toward Various Gram-positive Bacteria—The activity of Lc-Lys was tested on bacterial cells from various Gram-positive species, including LAB and pathogens with different PG chemotypes (Table 4). Pure recombinant Lc-Lys and Lc-Lys-2 were incubated with autoclaved cells of the different strains, and lysis was followed by the OD₆₀₀ decrease of the suspension. As shown in Table 4, both enzymes were only active against bacterial strains exhibiting PG with D-Asx (D-Asp or D-Asn) linked to the third diamino acid L-Lys or L-Orn of the peptide stems (Fig. 4C). In addition to *L. casei*, these include *L. lactis* and *E. faecium* with the D-Ala⁴→D-Asx-L-Lys³ cross-bridge. Noteworthy, Lc-Lys lysed *L. fermentum* with D-Ala⁴→D-Asx-L-Orn³ cross-bridge; Lc-Lys-2 was also able to lyse *L. fermentum* cells but at a lower rate

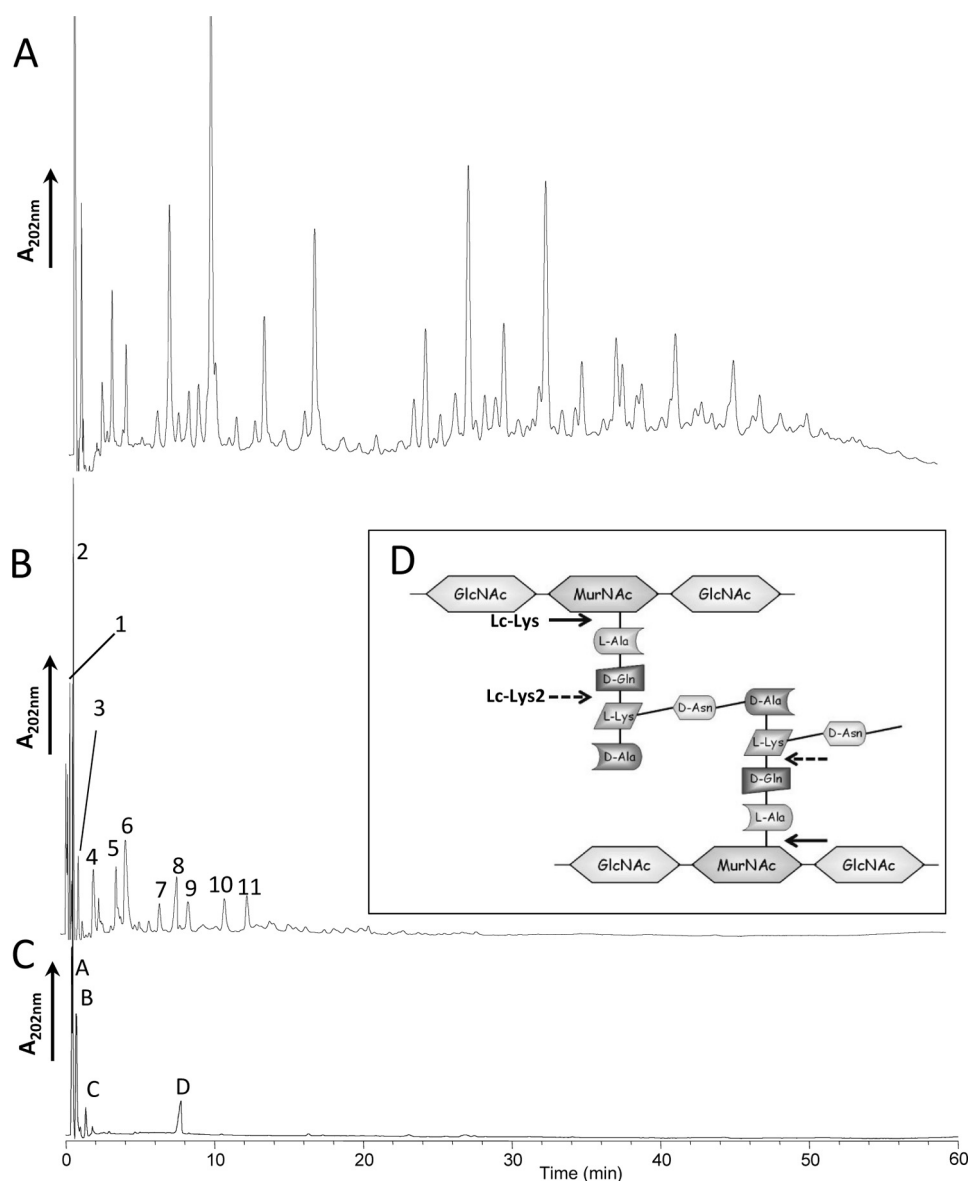


FIGURE 3. **Analysis of the hydrolytic specificity of Lc-Lys and Lc-Lys-2 endolysins on purified *L. casei* PG.** A, PG digested with mutanolysin as a control for the muuropeptide profile obtained with a muramidase (14); B, PG digested with recombinant endolysin Lc-Lys; C, PG digested with recombinant endolysin Lc-Lys-2. Soluble muuropeptides were separated by RP-HPLC. Peaks marked with numbers and letters are identified in Table 3. D, schematic representation of *L. casei* PG structure showing positions of amide bonds cleaved by Lc-Lys (arrows) and Lc-Lys-2 (dashed arrows).

suggesting that Lc-Lys-2, which cleaves the bond between D-iGln and L-Lys, is less active when L-Lys is replaced by L-Orn.

Activity against *L. lactis* and *E. faecium* Cell Wall Mutants with Modified PG Structure—To examine more precisely the specificity of Lc-Lys and Lc-Lys-2 toward PG, we tested first their lytic activity on a set of *L. lactis* MG1363 mutants with modified PG structure, which we previously constructed (Table 1). Interestingly, the activity of Lc-Lys and Lc-Lys-2 was completely abolished on two *L. lactis* mutants both by the zymogram (Fig. 2, A and B, lanes 4 and 5) and spectrophotometry (Fig. 4, A and B) assays. These two *L. lactis* mutants have a modified interpeptide cross-bridge, which consists of 25% D-Asp and 75% D-Asn in wild-type *L. lactis* MG1363 (22). In the first mutant VES4240 (*aslA/pmurMN+*), the D-Ala⁴→(D-Asp/D-Asn)-L-Lys³ cross-bridge is replaced by D-Ala⁴→L-Ala-(L-Ala/L-Ser)-L-Lys³ (23) after inactivation of the aspartate-ligase

aslA gene and expression of *Streptococcus pneumoniae murMN* genes on a plasmid. In the second mutant, the *asnH* asparagine synthase gene is disrupted, thereby preventing amidation of D-Asp (Fig. 4C) (22). In contrast, the activity of Lc-Lys and Lc-Lys-2 was only marginally affected by mutations inactivating genes encoding MurNAC-O-acetyltransferase OatA, GlcNAc deacetylase PgdA, and D-Ala-carboxypeptidases DacA and DacB (data not shown). It is worth noting that the sensitive *L. casei* BL23 and *E. faecium* D344S cells contain a high level of amidated D-Asn cross-bridge (close to 100% in *L. casei* (14) and 96% in *E. faecium* (24)). Together, these results indicate that Lc-Lys and Lc-Lys-2 are specific for PG-containing D-Asn in the cross-bridge.

We then tested the lytic activity of Lc-Lys and Lc-Lys-2 on the ampicillin-resistant mutant M512 of *E. faecium* D344S (Fig. 4, A and B). Resistance of the mutant is due to bypass of

Peptidoglycan-binding Domain Specific for D-Asn Cross-bridge

TABLE 3

Molecular masses and structures of the main muropeptides obtained by digestion of *L. casei* PG with Lc-Lys and Lc-Lys-2

Peaks ^a	Proposed structures ^b	m/z [M + Na] ⁺	
		Observed	Calculated
Lc-Lys			
1	(Asn)-Tri	482.09	482.23
2	(Asn)-Tetra	553.08	553.27
3	(Asp)-Tetra	554.14	554.25
4	(Asn)-Tetra → (Asn)-Tri	994.38	994.50
5	(Asp)-Tetra → (Asn)-Tri	995.22	995.48
6	(Asn)-Tetra → (Asn)-Tetra	1,065.45	1,065.54
7	(Asp)-Tetra → (Asn)-Tetra	1,066.49	1,066.52
8	Tetra → (Asn)-Tetra → (Asn)-Tri	1,392.72	1,392.73
9	Tetra → (Asn)-Tetra → (Asn)-Tetra	1,463.58	1,463.77
10	(Asn)-Tetra → (Asn)-Tetra → (Asn)-Tri	1,506.82	1,506.77
11	(Asn)-Tetra → (Asn)-Tetra → (Asn)-Tetra	1,577.83	1,577.81
Lc-Lys-2			
A	(Asn)-Lys-Ala	354.09	354.17
B	(Asn)-Lys-Ala → (Asn)-Lys-Ala	667.39	667.35
C	(Asp)-Lys-Ala → (Asn)-Lys-Ala	668.37	668.33
D	(Asn)-Lys-Ala → (Asn)-Lys-Ala → (Asn)-Lys-Ala	980.51	980.52

^a Peak numbers and letters refer to Fig. 3, B and C.

^b Tri, tripeptide (L-Ala-D-iGln-L-Lys); Tetra, tetrapeptide (L-Ala-D-iGln-L-Lys-D-Ala); iGln, isoglutamine. See also the *L. casei* PG structure on Fig. 3. Assignment of D-Asp and D-Asn to either stem peptide is arbitrary. The arrows indicate the cross-links generated by DD-transpeptidation.

^c m/z values correspond to monoisotopic masses.

TABLE 4

Activity of Lc-Lys and Lc-Lys-2 on various Gram-positive bacterial strains with different PG chemotypes

Strain	PG chemotype ^a	Lc-Lys activity ^b	Lc-Lys-2 activity ^b
<i>L. casei</i> BL23	D-Ala ⁴ → D-Asx-L-Lys ³	+	+
<i>L. lactis</i> MG1363	D-Ala ⁴ → D-Asx-L-Lys ³	+	+
<i>E. faecium</i> DOE	D-Ala ⁴ → D-Asx-L-Lys ³	+	+
<i>E. faecium</i> D344S	D-Ala ⁴ → D-Asx-L-Lys ³	+	+
<i>L. fermentum</i>	D-Ala ⁴ → D-Asx-L-Orn ³	+	+/-
<i>S. thermophilus</i> CNRZ1358	D-Ala ⁴ → (L-Ala) ₂₋₃ -L-Lys ³	-	-
<i>E. faecalis</i> JH2-2	D-Ala ⁴ → (L-Ala) ₂ -L-Lys ³	-	-
<i>E. faecalis</i> OG1RF	D-Ala ⁴ → (L-Ala) ₂ -L-Lys ³	-	-
<i>S. pneumoniae</i> 406	D-Ala ⁴ → L-Ala-(L-Ala/L-Ser)-L-Lys ³	-	-
<i>S. agalactiae</i> NEM316	D-Ala ⁴ → L-Ala-(L-Ala/L-Ser)-L-Lys ³	-	-
<i>S. mutans</i> UA159	D-Ala ⁴ → L-Ala-L-Thr-L-Lys ³	-	-
<i>S. pyogenes</i> D471	D-Ala ⁴ → (L-Ala) ₂₋₃ -L-Lys ³	-	-
<i>S. aureus</i> RN4220	D-Ala ⁴ → (Gly) ₅ -L-Lys ³	-	-
<i>L. monocytogenes</i> EGD-e	D-Ala ⁴ → mDAP ³	-	-
<i>B. subtilis</i> 168	D-Ala ⁴ → mDAP ³	-	-
<i>B. thuringiensis</i> ATCC35646	D-Ala ⁴ → mDAP ³	-	-
<i>B. cereus</i> BGSC6A1	D-Ala ⁴ → mDAP ³	-	-

^a Data are according to Ref. 49. D-Asx stands for D-Asp or amidated D-Asp (D-Asn).

^b Data were tested on autoclaved cells from each strain by following OD₆₀₀ reduction.

the DD-transpeptidase activity of classical penicillin-binding proteins by an LD-transpeptidase. In the PG structure, bypass results in substitution of 4 → 3 D-Ala⁴-D-Asx-L-Lys³ cross-links by 3 → 3 L-Lys³-D-Asx-L-Lys³ cross-links. D-Asn is found in the majority, ~ 96%, of the cross-bridges of the parental strain (344Ser) and of the mutant (M512) versus D-Asp (24). As shown in Fig. 4A, we observed that Lc-Lys is able to lyse *E. faecium* D344S and M512 cells indicating that the composition of the cross-bridge (D-Asn) rather than the nature of the cross-links (3 → 3 or 4 → 3) is the major specificity determinant for this enzyme. In contrast, Lc-Lys-2 was not active on the mutant cells indicating that its hydrolytic specificity of γ -D-Glu-L-Lys-endopeptidase cannot accommodate 3 → 3 cross-links.

Amidation of D-Asp Cross-bridge Is Crucial for Binding of the Lc-Lys C-terminal Domain—The C-terminal domain of Lc-Lys (Lc-LysBD) was produced in *E. coli* with an N-terminal His₆ tag and a C-terminal *Strep*-tagII and purified by two steps of affinity chromatography (Fig. 2D, lane 1). Also, the N-terminal domain of Lc-Lys (Lc-LysCD) was expressed in *E. coli* with His₆ tag and purified (Fig. 2C, lane 1). We first confirmed by zymo-

gram assays that the N-terminal domain lysed *L. casei* cells (Fig. 2C, lane 2), although its lytic activity was reduced compared with the entire Lc-Lys (Fig. 2A, lane 2). In contrast, no activity was associated to the recombinant C-terminal domain (Fig. 2D, lane 2).

Binding of recombinant Lc-LysBD to whole bacterial cells was tested by immunofluorescence. Bacteria were first treated with TCA to remove surface polymers allowing better exposure of PG (14, 25, 26) before incubation with pure *Strep*-tagII-tagged Lc-LysBD. Binding was revealed after incubation with anti-*Strep*-tag antibody followed by secondary fluorescent antibody and observation with an epifluorescence microscope (Fig. 5). Fluorescent labeling indicated that the C-terminal domain of Lc-Lys is able to bind the *L. casei* cell wall (Fig. 5, A–C) as well as the *L. lactis* cell wall (Fig. 5, D and E). In contrast, no binding to the *L. lactis* *asnH* mutant cell wall was observed (Fig. 5, F and G).

The binding specificity of Lc-LysBD was further tested by pull-down experiments. PG extracted from *L. casei* BL23, *L. lactis* MG1363, *L. lactis* *asnH* mutant, and *L. lactis* VES4240 (*aslA*/pmurMN+) mutant was incubated with various amounts of pure recombinant Lc-LysBD, and binding of Lc-LysBD to the PG sample was assayed by SDS-PAGE (Fig. 6).

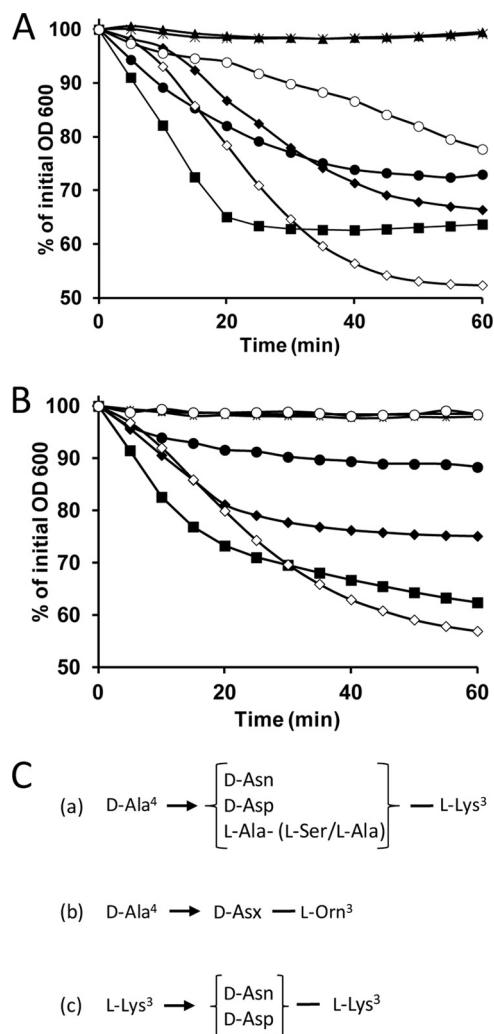


FIGURE 4. Lytic activity of purified recombinant Lc-Lys and Lc-Lys-2 toward bacteria with different PG cross-bridges and schematic representation of the cross-bridges. A, Lc-Lys; B, Lc-Lys-2 tested on *L. casei* BL23 (black diamonds), *L. lactis* MG1363 (black squares), *L. lactis asnH* (black triangles), *L. lactis asIA(pmurMN+)* (crosses), *L. fermentum* (black circles), *E. faecium* D344S (white diamonds), and *E. faecium* D344M512 mutant (white circles). C, schematic structure of the PG cross-bridges of the different bacterial strains tested. (a) *L. lactis* MG1363 wild-type (75% D-Asn and 25% D-Asp), *L. lactis asnH* mutant (100% D-Asp), and *L. lactis* VES4240 *asIA(pmurMN+)* (L-Ala-(L-Ser/L-Ala)), *L. casei* BL23 (\approx 100% D-Asn), and *E. faecium* D344S (96% D-Asn); (b) *L. fermentum*; (c) ampicillin-resistant *E. faecium* mutant M512 with 3 \rightarrow 3 cross-links and mainly D-Asn (96%) in its cross-bridge.

Lc-LysBD bound to PG from *L. casei* and *L. lactis* in a dose-dependent manner. In the same conditions, extremely low binding and no binding could be detected on PG extracted from the mutants with the modified cross-bridge, *L. lactis asnH* and *L. lactis* VES4240 (*asIA/pmurMN+*), respectively (Fig. 6). Taken together, these data indicate that the C-terminal domain of Lc-Lys endolysin binds the cell wall and is highly specific for the amidated form of D-Asp (*i.e.* D-Asn) present in the PG cross-bridge.

DISCUSSION

Most endolysins encoded by prophages or bacteriophages infecting Gram-positive bacteria have a conserved modular organization, including an N-terminal catalytic domain and a C-terminal CWBD. Until now, only a few ligands recognized by

the lysin CWBDs have been identified. In this study, we characterized two endolysins from *L. casei* prophages that differ at the level of their catalytic domains but have identical CWBDs. Although their CWBD exhibits sequence similarity with other PGHs present in sequence databases and was shown to bind *L. casei* cells, the recognized structure in the cell wall was unknown up to now. We showed here that this CWBD confers to both endolysins a high specificity toward the PG cross-bridge and selectively targets PG containing an amidated D-Asp (*i.e.* D-Asn) cross-bridge. To our knowledge, this is the first report for such a binding specificity for a phage endolysin and more generally for a PGH.

The ligands of bacteriophage endolysin CWBDs have been characterized in a limited number of cases. Endolysin Cpl-1 from *S. pneumoniae* phage was shown to bind choline present in teichoic acids from this bacterial species through choline-binding domains, which are also present in bacterial PGHs (27). The CWBDs of three endolysins of phages infecting *L. monocytogenes* were characterized in detail. For two of them, the identified ligands were cell wall carbohydrates most likely covalently anchored to the cell wall (7), whereas the third one, PlyP35, recognizes specifically GlcNAc substituents of the polyribitol-phosphate chain constituting wall teichoic acids (28). Regarding two *Bacillus anthracis* bacteriophage endolysins, their CWBD was shown to be specific for cell wall polysaccharides and more precisely for their galactosylation patterns (29). Very recently, CW_7 motifs present in Cpl-7 endolysin from a *S. pneumoniae* bacteriophage (30) were reported to recognize most probably PG and more specifically the GlcNAc-MurNAc-L-Ala-D-iGln mucopeptide (31). Finally, the CWBDs of two other *L. monocytogenes* endolysins were deduced to bind A1 γ -type PG because wall teichoic acids restrict their access to the bacterial cell wall surface, but the exact motif recognized was not identified (32). Besides, certain endolysins contain LysM domains (33) that were shown to recognize PG glycan chains (34, 35) or SH3b domains (36) shown to bind pentaglycine interpeptide bridges in *S. aureus* PG (37, 38). Thus, to our knowledge, the binding specificity of the two *L. casei* endolysins characterized in this work is novel compared with the other studied endolysins, and this study is the first evidence of a protein domain recognizing specifically the D-Asn cross-bridge of PG. According to sequence analysis, this domain is composed of three repeated modules.

Regarding their hydrolytic specificity, amino acid sequence analysis predicted an *N*-acetylmuramoyl-L-alanine amidase specificity for both endolysins, but with different catalytic domains. Lc-Lys contains a PF01510 (*Amidase_2*) domain, whereas Lc-Lys-2 contains a PF05382 (*Amidase_5*) domain. In this study, contrary to the previous claim that LysA2 (94% similar to Lc-Lys) has D-Ala-D-Asp-endopeptidase specificity (13), we show that Lc-Lys is actually an amidase cleaving the bond between MurNAc and D-Ala inside PG (Fig. 3D). We obtained this result by digesting purified PG with Lc-Lys and analyzing the released PG fragments by HPLC and MS, which is a straightforward method compared with the indirect one used in Ref. 13. Regarding Lc-Lys-2, the same experimental approach revealed endopeptidase specificity for Lc-Lys-2 with a

Peptidoglycan-binding Domain Specific for D-Asn Cross-bridge

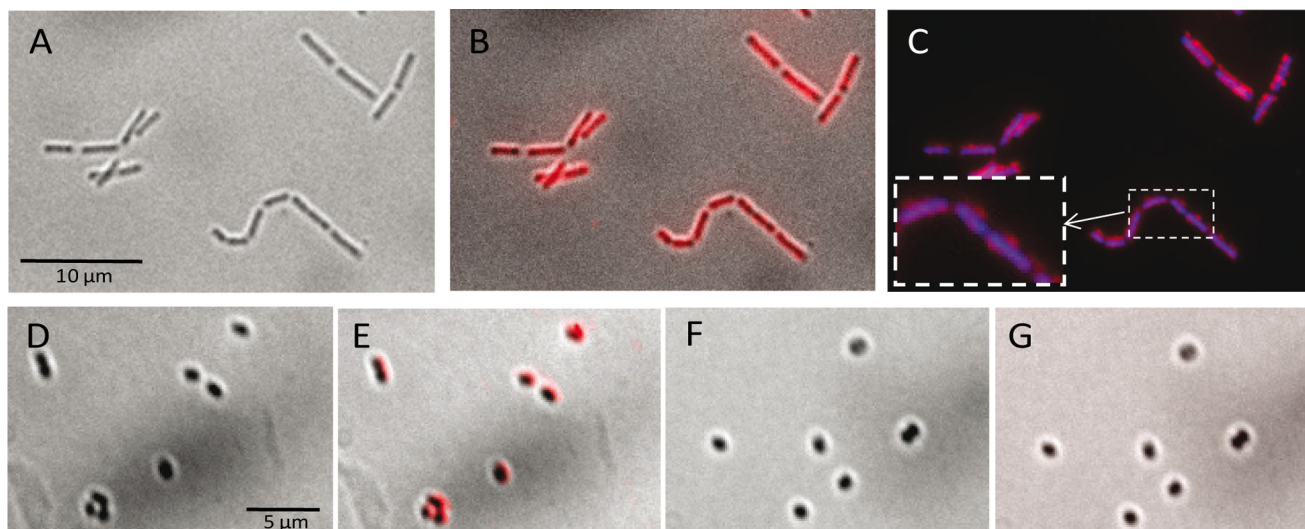


FIGURE 5. **Binding of Lc-LysBD to *L. casei* and *L. lactis* cells.** *L. casei* BL23 (A–C), *L. lactis* MG1363 (D and E), and *L. lactis asnH* mutant (F and G) cells harvested in stationary phase were treated with TCA and incubated successively with purified Strep-tagII-tagged Lc-LysBD, anti-Strep-tagII antibody, and secondary antibody coupled to Alexa Fluor 555. Bright field pictures (A, D, and F) were overlaid with the corresponding fluorescent images (B, E, and G, respectively). Additional staining of *L. casei* was performed with DAPI (blue) and overlaid with the corresponding fluorescent image (C).

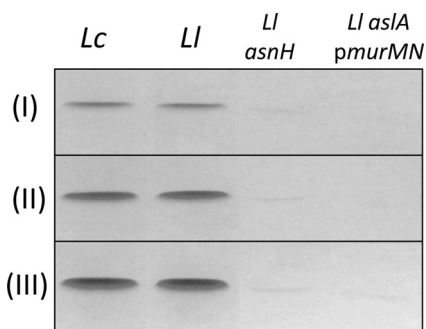


FIGURE 6. **Binding of purified Lc-LysBD to purified PG containing different cross-bridge amino acids.** PG samples extracted from *L. casei* BL23 (Lc), *L. lactis* MG1363 (Ll), and *L. lactis asnH* and *L. lactis asIA* (pmurMN+) were incubated with different amounts of Lc-LysBD: 15 μ g (I), 30 μ g (II), and 45 μ g (III). Protein bound to PG was analyzed by SDS-PAGE. PG cross-bridge structure of the different strains is shown on Fig. 4C.

cleavage site between D-iGln and L-Lys inside peptide stems of the PG macromolecule (Fig. 3D). Noteworthy, another endolysin endowed with the same catalytic domain (*Amidase_5*) and issued from a bacteriophage infecting *Streptococcus agalactiae* was also reported to have γ -D-Glu-L-Lys endopeptidase activity (36).

The lytic activity of the *L. casei* endolysin Lc-Lys and Lc-Lys-2 was tested on a panel of bacteria with various characterized PG structures. Our results indicate that the main requirement for Lc-Lys activity is the presence of D-Asn in the PG cross-bridge. Lc-Lys was able to lyse *L. casei* BL23 cells, *L. lactis* MG1363 cells, and the pathogenic strain tested, *E. faecium* D344S, all with the D-Ala⁴→D-Asx-L-Lys³ PG cross-bridge containing a high proportion of D-Asn versus D-Asp (100% (14), 75% D-Asn (20), and 96% (24), respectively) (Fig. 4C). In contrast, Lc-Lys was not able to lyse the *L. lactis asnH* mutant derived from MG1363 with 100% D-Asp in its PG cross-bridge. Lc-Lys was also able to lyse *L. fermentum* cells with D-Ala⁴→D-Asx-L-Orn³ cross-bridge. Finally, it is active against the ampicillin-resistant mutant M512 derived from *E. faecium* D344S, which possesses 3→3 bridges mainly constituting the amidated

form L-Lys³-D-Asn-L-Lys³. In addition, we showed that this specificity is associated with Lc-Lys CWBD, which binds PG with a high proportion of D-Asn but not PG with only D-Asp or other amino acids in the cross-bridges. Regarding Lc-Lys-2, the same binding specificity toward D-Asn is conferred by its CWBD as shown by comparing lytic activity on *L. lactis* wild-type MG1363 and *asnH* mutant. However, because of its cleavage specificity of γ -D-Glu-L-Lys endopeptidase, it is less active on cells of *L. fermentum* with L-Orn replacing L-Lys in position 3 of PG stem peptides and not active on bacteria with the 3→3 cross-bridge.

In this study, Lc-Lys was able to lyse *E. faecium* DOE and D344S, whereas LysA2, the lysin of bacteriophage A2 characterized previously (13), was reported not to be active on *E. faecium* SC139. The apparent discrepancy could be linked to a low level of amidation of the PG cross-bridge in the SC139 strain contrary to the high level previously assessed in the D344S strain (24). Another possible reason could be the presence of hindering cell wall components at the surface of the SC139 strain.

Regarding possible applications, the *L. casei* endolysin Lc-Lys should be tested on a wider range of *E. faecium* strains to evaluate its potential as an antimicrobial agent to target *E. faecium*, for example in a complex microbial community. In another field of application, Lc-Lys CWBD appears already as a promising candidate to anchor noncovalent proteins at the bacterial surface as previously shown to obtain vaccines or probiotic bacteria (39).

Domains with high sequence identity (above 60%) with the CWBD domain of Lc-Lys and Lc-Lys-2 were mainly found in endolysins identified in *L. lactis* phages or in prophages present in complete genome sequences of firmicutes, including LAB and other species of the human gut microbiota. This domain was found associated with different catalytic domains with PG-hydrolyzing activity, including most often *Amidase_2* (PF01510), but also *Amidase_5* (PF05382), peptidase M23 (PF01551), and *Glyco_hydro_25* (PF01183). Bacteriophages

infecting LAB were intensively studied because they represent a real threat for dairy fermentations (40). Most endolysins identified in their complete sequences (41, 42) have a C-terminal domain without any sequence homology to well characterized CWBDs. To our knowledge, their ligands have not been identified so far, and our study is the first experimental identification of an endolysin ligand in the cell wall of LAB. Interestingly, the CWBD characterized in this study is also present in enterolysin A, a bacteriocin with lytic activity produced by *E. faecalis* and active mainly against bacteria with D-Ala⁴→D-Asx-L-Lys³ PG chemotype, including selected enterococci, pediococci, lactococci, and lactobacilli (43) in agreement with our results presented here.

The PG-binding domain characterized in this study is highly specific for D-Asn present in PG cross-bridges and represents a novel class of bacterial CWBD. Determination of the three-dimensional structure and the amino acid residues involved in PG recognition will help us understand the molecular basis of the high specificity of the characterized domain for its ligands.

Acknowledgments—We thank Michał Ferens, Calum MacKichan, and Marie-Françoise Noiroit-Gros (Micalis, INRA, France) for their help with the epifluorescence microscopy experiments. We are very grateful to Michel Arthur (INSERM, Paris, France) for the gift of *E. faecium* strains and for critical reading of the manuscript.

REFERENCES

- Vollmer, W., Joris, B., Charlier, P., and Foster, S. (2008) Bacterial peptidoglycan (murein) hydrolases. *FEMS Microbiol. Rev.* **32**, 259–286
- Chapot-Chartier, M.-P. (2010) in *Prokaryotic Cell Wall Compounds* (König, H., Claus, H., and Varna, A., eds) pp. 383–406, Springer Verlag Berlin, Heidelberg, Germany
- Loessner, M. J. (2005) Bacteriophage endolysins—current state of research and applications. *Curr. Opin. Microbiol.* **8**, 480–487
- Hermoso, J. A., García, J. L., and García, P. (2007) Taking aim on bacterial pathogens: from phage therapy to enzymatics. *Curr. Opin. Microbiol.* **10**, 461–472
- Wang, I. N., Smith, D. L., and Young, R. (2000) Holins: the protein clocks of bacteriophage infections. *Annu. Rev. Microbiol.* **54**, 799–825
- Fischetti, V. A. (2008) Bacteriophage lysins as effective antibacterials. *Curr. Opin. Microbiol.* **11**, 393–400
- Loessner, M. J., Kramer, K., Ebel, F., and Scherer, S. (2002) C-terminal domains of *Listeria monocytogenes* bacteriophage murein hydrolases determine specific recognition and high affinity binding to bacterial cell wall carbohydrates. *Mol. Microbiol.* **44**, 335–349
- O’Flaherty, S., Ross, R. P., and Coffey, A. (2009) Bacteriophage and their lysins for elimination of infectious bacteria. *FEMS Microbiol. Rev.* **33**, 801–819
- Schmelcher, M., Shabarova, T., Eugster, M. R., Eichenseher, F., Tchang, V. S., Banz, M., and Loessner, M. J. (2010) Rapid multiplex detection and differentiation of *Listeria* cells by use of fluorescent phage endolysin cell wall binding domains. *Appl. Environ. Microbiol.* **76**, 5745–5756
- Lee, S. Y., Choi, J. H., and Xu, Z. (2003) Microbial cell-surface display. *Trends Biotechnol.* **21**, 45–52
- Bermúdez-Humarán, L. G., Kharrat, P., Chatel, J. M., and Langella, P. (2011) Lactococci and lactobacilli as mucosal delivery vectors for therapeutic proteins and DNA vaccines. *Microb. Cell Fact.* **10**, S4
- Leenhouts, K., Buist, G., and Kok, J. (1999) Anchoring of proteins to lactic acid bacteria. *Antonie Van Leeuwenhoek* **76**, 367–376
- Ribelles, P., Rodríguez, I., and Suárez, J. E. (2012) LysA2, the *Lactobacillus casei* bacteriophage A2 lysin is an endopeptidase active on a wide spectrum of lactic acid bacteria. *Appl. Microbiol. Biotechnol.* **94**, 101–110
- Regulski, K., Courtin, P., Meyrand, M., Claes, I. J., Lebeer, S., Vanderleyden, J., Hols, P., Guillot, A., and Chapot-Chartier, M. P. (2012) Analysis of the peptidoglycan hydrolase complement of *Lactobacillus casei* and characterization of the major γ -D-glutamyl-L-lysyl endopeptidase. *PLoS One* **7**, e32301
- Finn, R. D., Mistry, J., Tate, J., Coggill, P., Heger, A., Pollington, J. E., Gavin, O. L., Gunasekaran, P., Ceric, G., Forslund, K., Holm, L., Sonnhammer, E. L., Eddy, S. R., and Bateman, A. (2010) The Pfam protein families database. *Nucleic Acids Res.* **38**, D211–D222
- Sambrook, J., Fritsch, E. F., and Maniatis, T. (1989) *Molecular Cloning: A Laboratory Manual*, 2nd Ed., Cold Spring Harbor Laboratory Press, Cold Spring Harbor, NY
- Dower, W. J., Miller, J. F., and Ragsdale, C. W. (1988) High efficiency transformation of *E. coli* by high voltage electroporation. *Nucleic Acids Res.* **16**, 6127–6145
- Huard, C., Miranda, G., Wessner, F., Bolotin, A., Hansen, J., Foster, S. J., and Chapot-Chartier, M. P. (2003) Characterization of Acmb, an N-acetylglucosaminidase autolysin from *Lactococcus lactis*. *Microbiology* **149**, 695–705
- Meyrand, M., Boughammoura, A., Courtin, P., Mézange, C., Guillot, A., and Chapot-Chartier, M.-P. (2007) Peptidoglycan N-acetylglucosamine deacetylation decreases autolysis in *Lactococcus lactis*. *Microbiology* **153**, 3275–3285
- Courtin, P., Miranda, G., Guillot, A., Wessner, F., Mézange, C., Domakova, E., Kulakauskas, S., and Chapot-Chartier, M. P. (2006) Peptidoglycan structure analysis of *Lactococcus lactis* reveals the presence of an LD-carboxypeptidase involved in peptidoglycan maturation. *J. Bacteriol.* **188**, 5293–5298
- Kashige, N., Nakashima, Y., Miake, F., and Watanabe, K. (2000) Cloning, sequence analysis, and expression of *Lactobacillus casei* phage PL-1 lysis genes. *Arch. Virol.* **145**, 1521–1534
- Veiga, P., Erkelenz, M., Bernard, E., Courtin, P., Kulakauskas, S., and Chapot-Chartier, M. P. (2009) Identification of the asparagine synthase responsible for D-Asp amidation in the *Lactococcus lactis* peptidoglycan interpeptide cross-bridge. *J. Bacteriol.* **191**, 3752–3757
- Veiga, P., Piquet, S., Maisons, A., Furlan, S., Courtin, P., Chapot-Chartier, M. P., and Kulakauskas, S. (2006) Identification of an essential gene responsible for D-Asp incorporation in the *Lactococcus lactis* peptidoglycan cross-bridge. *Mol. Microbiol.* **62**, 1713–1724
- Mainardi, J. L., Legrand, R., Arthur, M., Schoot, B., van Heijenoort, J., and Gutmann, L. (2000) Novel mechanism of β -lactam resistance due to bypass of DD-transpeptidation in *Enterococcus faecium*. *J. Biol. Chem.* **275**, 16490–16496
- Chapot-Chartier, M. P., Vinogradov, E., Sadovskaya, I., Andre, G., Mistou, M. Y., Trieu-Cuot, P., Furlan, S., Bidnenko, E., Courtin, P., Péchoux, C., Hols, P., Dufrene, Y. F., and Kulakauskas, S. (2010) The cell surface of *Lactococcus lactis* is covered by a protective polysaccharide pellicle. *J. Biol. Chem.* **285**, 10464–10471
- Bosma, T., Kanninga, R., Neef, J., Audouy, S. A., van Roosmalen, M. L., Steen, A., Buist, G., Kok, J., Kuipers, O. P., Robillard, G., and Leenhouts, K. (2006) Novel surface display system for proteins on nongenetically modified Gram-positive bacteria. *Appl. Environ. Microbiol.* **72**, 880–889
- García, E., García, J. L., García, P., Arrarás, A., Sánchez-Puelles, J. M., and López, R. (1988) Molecular evolution of lytic enzymes of *Streptococcus pneumoniae* and its bacteriophages. *Proc. Natl. Acad. Sci. U.S.A.* **85**, 914–918
- Eugster, M. R., Haug, M. C., Huwiler, S. G., and Loessner, M. J. (2011) The cell wall binding domain of *Listeria* bacteriophage endolysin PlyP35 recognizes terminal GlcNAc residues in cell wall teichoic acid. *Mol. Microbiol.* **81**, 1419–1432
- Mo, K. F., Li, X., Li, H., Low, L. Y., Quinn, C. P., and Boons, G. J. (2012) Endolysins of *Bacillus anthracis* bacteriophages recognize unique carbohydrate epitopes of vegetative cell wall polysaccharides with high affinity and selectivity. *J. Am. Chem. Soc.* **134**, 15556–15562
- Bustamante, N., Campillo, N. E., García, E., Gallego, C., Pera, B., Diakun, G. P., Sáiz, J. L., García, P., Díaz, J. F., and Menéndez, M. (2010) Cpl-7, a lysozyme encoded by a pneumococcal bacteriophage with a novel cell

Peptidoglycan-binding Domain Specific for D-Asn Cross-bridge

- wall-binding motif. *J. Biol. Chem.* **285**, 33184–33196
31. Bustamante, N., Rico-Lastres, P., García, E., García, P., and Menéndez, M. (2012) Thermal Stability of Cpl-7 Endolysin from the *Streptococcus pneumoniae* bacteriophage Cp-7; cell wall targeting of its CW_7 motifs. *PLoS One* **7**, e46654
 32. Eugster, M. R., and Loessner, M. J. (2012) Wall teichoic acids restrict access of bacteriophage endolysin Ply118, Ply511, and PlyP40 cell wall binding domains to the *Listeria monocytogenes* peptidoglycan. *J. Bacteriol.* **194**, 6498–6506
 33. Hu, S., Kong, J., Kong, W., Guo, T., and Ji, M. (2010) Characterization of a novel LysM domain from *Lactobacillus fermentum* bacteriophage endolysin and its use as an anchor to display heterologous proteins on the surfaces of lactic acid bacteria. *Appl. Environ. Microbiol.* **76**, 2410–2418
 34. Steen, A., Buist, G., Leenhouts, K. J., El Khattabi, M., Grijpstra, F., Zomer, A. L., Venema, G., Kuipers, O. P., and Kok, J. (2003) Cell wall attachment of a widely distributed peptidoglycan binding domain is hindered by cell wall constituents. *J. Biol. Chem.* **278**, 23874–23881
 35. Frankel, M. B., and Schneewind, O. (2012) Determinants of murein hydrolase targeting to cross-wall of *Staphylococcus aureus* peptidoglycan. *J. Biol. Chem.* **287**, 10460–10471
 36. Pritchard, D. G., Dong, S., Kirk, M. C., Cartee, R. T., and Baker, J. R. (2007) LambdaSa1 and LambdaSa2 prophage lysins of *Streptococcus agalactiae*. *Appl. Environ. Microbiol.* **73**, 7150–7154
 37. Gründling, A., and Schneewind, O. (2006) Cross-linked peptidoglycan mediates lysostaphin binding to the cell wall envelope of *Staphylococcus aureus*. *J. Bacteriol.* **188**, 2463–2472
 38. Lu, J. Z., Fujiwara, T., Komatsuzawa, H., Sugai, M., and Sakon, J. (2006) Cell wall-targeting domain of glycylglycine endopeptidase distinguishes among peptidoglycan cross-bridges. *J. Biol. Chem.* **281**, 549–558
 39. Ribelles, P., Benbouziane, B., Langella, P., Suárez, J. E., and Bermúdez-Humarán, L. G. (2013) Protection against human papillomavirus type 16-induced tumors in mice using nongenetically modified lactic acid bacteria displaying E7 antigen at its surface. *Appl. Microbiol. Biotechnol.* **97**, 1231–1239
 40. Garneau, J. E., and Moineau, S. (2011) Bacteriophages of lactic acid bacteria and their impact on milk fermentations. *Microb. Cell Fact.* **10**, S20
 41. Lortal, S., and Chapot-Chartier, M. P. (2005) Role, mechanisms and control of lactic acid bacteria lysis in cheese. *Int. Dairy J.* **15**, 857–871
 42. Gasson, M. J. (1996) Lytic systems in lactic acid bacteria and their bacteriophages. *Antonie Van Leeuwenhoek* **70**, 147–159
 43. Nilsen, T., Nes, I. F., and Holo, H. (2003) Enterolysin A, a cell wall-degrading bacteriocin from *Enterococcus faecalis* LMG 2333. *Appl. Environ. Microbiol.* **69**, 2975–2984
 44. Acedo-Félix, E., and Pérez-Martínez, G. (2003) Significant differences between *Lactobacillus casei* subsp. *casei* ATCC 393T and a commonly used plasmid-cured derivative revealed by a polyphasic study. *Int. J. Syst. Evol. Microbiol.* **53**, 67–75
 45. Gasson, M. J. (1983) Plasmid complements of *Streptococcus lactis* NCDO 712 and other lactic streptococci after protoplast-induced curing. *J. Bacteriol.* **154**, 1–9
 46. Kuipers, O. P., de Ruyter P. G., Kleerebezem M., and de Vos, W. M. (1998) Quorum sensing-controlled gene expression in lactic acid bacteria. *J. Biotechnol.* **64**, 15–21
 47. Veiga, P., Bulbarela-Sampieri, C., Furlan, S., Maisons, A., Chapot-Chartier, M.-P., Erkelenz, M., Mervelet, P., Noirot, P., Frees, D., Kuipers, O. P., Kok, J., Gruss, A., Buist, G., and Kulakauskas, S. (2007) SpxB regulates O-acetylation-dependent resistance of *Lactococcus lactis* peptidoglycan to hydrolysis. *J. Biol. Chem.* **282**, 19342–19354
 48. Roces, C., Courtin, P., Kulakauskas, S., Rodríguez, A., Chapot-Chartier, M. P., and Martínez, B. (2012) Isolation of *Lactococcus lactis* mutants simultaneously resistant to the cell wall-active bacteriocin Lcn972, lysozyme, nisin, and bacteriophage c2. *Appl. Environ. Microbiol.* **78**, 4157–4163
 49. Schleifer, K. H., and Kandler, O. (1972) Peptidoglycan types of bacterial cell walls and their taxonomic implications. *Bacteriol. Rev.* **36**, 407–477

A Novel Type of Peptidoglycan-binding Domain Highly Specific for Amidated d-Asp Cross-bridge, Identified in *Lactobacillus casei* Bacteriophage Endolysins

Krzysztof Regulski, Pascal Courtin, Saulius Kulakauskas and Marie-Pierre Chapot-Chartier

J. Biol. Chem. 2013, 288:20416-20426.

doi: 10.1074/jbc.M112.446344 originally published online June 3, 2013

Access the most updated version of this article at doi: [10.1074/jbc.M112.446344](https://doi.org/10.1074/jbc.M112.446344)

Alerts:

- [When this article is cited](#)
- [When a correction for this article is posted](#)

[Click here](#) to choose from all of JBC's e-mail alerts

This article cites 47 references, 20 of which can be accessed free at <http://www.jbc.org/content/288/28/20416.full.html#ref-list-1>