



HAL
open science

Explicit investment rules with time-to-build and uncertainty

René Aïd, Salvatore Federico, Huyen Pham, Bertrand Villeneuve

► **To cite this version:**

René Aïd, Salvatore Federico, Huyen Pham, Bertrand Villeneuve. Explicit investment rules with time-to-build and uncertainty. 2014. hal-00997994

HAL Id: hal-00997994

<https://hal.science/hal-00997994>

Preprint submitted on 30 May 2014

HAL is a multi-disciplinary open access archive for the deposit and dissemination of scientific research documents, whether they are published or not. The documents may come from teaching and research institutions in France or abroad, or from public or private research centers.

L'archive ouverte pluridisciplinaire **HAL**, est destinée au dépôt et à la diffusion de documents scientifiques de niveau recherche, publiés ou non, émanant des établissements d'enseignement et de recherche français ou étrangers, des laboratoires publics ou privés.

Explicit investment rules with time-to-build and uncertainty*

René Aid[†] Salvatore Federico[‡] Huyên Pham[§] Bertrand Villeneuve[¶]

May 30, 2014

Abstract

We establish explicit socially optimal rules for an irreversible investment decision with time-to-build and uncertainty. Assuming a price sensitive demand function with a random intercept, we provide comparative statics and economic interpretations for three models of demand (arithmetic Brownian, geometric Brownian, and the Cox-Ingersoll-Ross). Committed capacity, that is, the installed capacity plus the investment in the pipeline, must never drop below the best predictor of future demand, minus two biases. The discounting bias takes into account the fact that investment is paid upfront for future use; the precautionary bias multiplies a type of risk aversion index by the local volatility. Relying on the analytical forms, we discuss in detail the economic effects.

Keywords: optimal capacity; irreversible investments; singular stochastic control; time-to-build; delay equations.

AMS Classification: 93E20, 49J40, 91B38.

JEL Classification: C61; D92; E22.

1 Introduction

How to track demand when the time-to-build retards capacity expansion? When to invest and how much? We answer these questions with a model of irreversible investment. In this model, the objective of the decision-maker is to minimize the total discounted social cost. That is, the decision-maker maximizes the standard microeconomic social surplus. We are able to show in particular that the solution is implementable as a competitive equilibrium. We are able to calculate explicit, compact, decision rules.

In many capitalistic industries, construction delays are essential. In this paper, we focus on electricity generation. In this sector, construction delays can be considerable: they could be only one year for a small wind-farm but could be three years for a gas turbine and eight to ten years for a nuclear plant. The scenarios of the evolution of demand with their trends, their drag force, and their stochastic parts require particular attention. To this purpose, we develop the comparative statics and economic interpretations for three demand models applied to electricity generation. The intercept of the price sensitive demand function follows either an arithmetic Brownian motion as in [Bar-Ilan et al. \[2002\]](#), or a geometric Brownian motion as in [Bar-Ilan and Strange \[1996\]](#) and [Aguerrevere \[2003\]](#), or the Cox-Ingersoll-Ross (CIR) model. The latter is a mean-reverting process, and, to

*This study was supported by FiME (Laboratoire de Finance des Marchés de l’Energie) and the “Finance et Développement Durable - Approches Quantitatives” Chair.

[†]EDF R&D and www.fime-lab.org. rene.aid@edf.fr

[‡]Università degli Studi di Milano. salvatore.federico@unimi.it

[§]LPMA, Université Paris-Diderot. pham@math.univ-paris-diderot.fr

[¶]LEDa, Université Paris-Dauphine. bertrand.villeneuve@dauphine.fr

our knowledge, no real options investment model exists in the literature with time-to-build and a process of this type. The basic existence and regularity results are provided in a companion paper ([Federico and Pham \[2014\]](#)), but we simplify the specification for the sake of calculability.

An exact decision rule facilitates the clear understanding of the effects at play. The decision rule stipulates what the committed capacity should be, that is, the installed capacity plus capacity under construction. The action rule, given the current conditions, is that the committed capacity must not fall below the best predictor of demand after the delay, minus two biases. The first bias is a pure discounting bias unrelated to uncertainty: because the investment is paid for upfront but only produces after the delay, the required committed capacity is reduced. The second one is a precautionary bias where a risk aversion index is multiplied by local volatility .

Because of this decomposition, we find the following qualitative results. For investment with a long construction horizon, we find that uncertainty has very little importance compared to the trend of demand growth. Thus, an error on the long-term trend is much more harmful than an error on volatility. For investment with a short construction horizon, the opposite is true: decision-makers should pay greater attention to volatility. We also illustrate the practical importance of a possible saturation of the demand with the CIR model. The investors' behavior is very different depending on whether demand is above or below the long-run average, or target. When demand is above the target, the investor is almost insensitive to the current demand, except if the return speed is very slow. Below the target, the comparison between the time-to-build and the expected time-to-target is critical: if the time-to-build is longer, then the optimal committed capacity is practically the target itself minus the biases; if the time-to-build is shorter, then the investors observe the process and invest progressively.

The literature on the topic provides a number of insights. [Table 1](#) provides a tentative classification. The competitive pressure matters: competition kills the value of waiting and thus accelerates investment. [Grenadier \[2000, 2002\]](#) and [Pacheco de Almeida and Zemsky \[2003\]](#) follow this line of thought. We exclusively use a competitive market and show that this effect is completely internalized. The seminal work [McDonald and Siegel \[1986\]](#) on the option to wait in the case of irreversible decisions shows that uncertainty has a negative effect on investment. Strong support for this result is that with greater volatility, investment is triggered by a higher current product price, i.e. a smaller probability of a market downturn. Several extensions provide conditions under which this result does not hold or might be mitigated. Construction delays, that is, the time between the decision and the availability of the new capacity, have attracted the attention of economists. In particular, the models in [Bar-Ilan and Strange \[1996\]](#), [Bar-Ilan et al. \[2002\]](#), and [Aguerrevere \[2003\]](#) exhibit situations where an increase in uncertainty leads to an increase in investment.

The models that exhibit a positive effect on investment from an increase in uncertainty, do so only for a specific range of parameters. Besides, the quantitative effects are very small. [Bar-Ilan et al. \[2002\]](#) show in their simulations that when the uncertainty on demand is multiplied by five, then the investment threshold moves only by 1%. And as the authors themselves point out, the investment thresholds are nearly independent of the level of uncertainty. The large effects found in [Majd and Pindyck \[1987\]](#) are reconsidered in [Milne and Whalley \[2000\]](#).

In [Aguerrevere \[2003\]](#), a paper with which we share most of the modeling choices, the production is flexible, although the capacity accumulation is not. Investors keep the choice to produce only when it is profitable, and thus the rigidity of investment is attenuated by the option to produce or not. The capacity reserves are all the more profitable the longer the time-to-build. In consequence, uncertainty tends to increase the investment rate. This paper is significant because of the way it integrates meaningful economic questions, and

Paper	Objective	Competition	Investment
Majd and Pindyck 1987	firm	no	irreversible
Bar-Ilan and Strange 1996	firm	no	reversible
Grenadier 2000	firm	perfect	irreversible
Bar-Ilan et al. 2002	planner	no	irreversible
Grenadier 2002	firm	imperfect	irreversible
Aguerrevere 2003	planner/firm	perfect/imperfect	irreversible with flexible production

Table 1: Papers on investment with uncertainty and time-to-build.

the numerical simulations are instructive.

As far as electricity production is concerned, the flexibility of the base production is limited either for technological reasons (nuclear plants) or because the fixed cost per idle period are important (coal- or gas-fired power plants). In which case, the cost difference between producing or not is narrow. Our approach fills a gap in the literature.

This paper is organized as follows. Section 2 describes and justifies our modeling approach. Solutions and general properties are provided in Section 3. We give the expression of the decision rule and we show that the solution to the optimization program can be decentralized as a competitive equilibrium. The economic analysis of the joint effect of time-to-build and uncertainty is given in Section 4 for the a geometric Brownian motion, and in Section 5 for the CIR model. Section 6 concludes.

For information on the popular arithmetic Brownian motion application, please see Appendix A.

2 The model

We set up a model of an irreversible investment decision in which the objective is to track the current demand of electricity as closely as possible.

1. The inverse demand function at date t is

$$p_t(Q) = \eta + \theta(D_t - Q), \quad (1)$$

with $\eta \geq 0$ and $\theta > 0$, where p is the price and Q is the output.¹ The (quasi) intercept $(D_t)_{t \geq 0}$ is a diffusion that satisfies the SDE

$$\begin{cases} dD_t = \mu(D_t)dt + \sigma(D_t)dW_t, \\ D_0 = d, \end{cases} \quad (2)$$

where $(W_t)_{t \geq 0}$ is a Brownian motion on some filtered probability space $(\Omega, \mathcal{F}, (\mathcal{F}_t)_{t \geq 0}, \mathbb{P})$. Without loss of generality, we suppose that the filtration $(\mathcal{F}_t)_{t \geq 0}$ is the one generated by the Brownian motion W and enlarged by the \mathbb{P} -null sets.

2. There is a time lag $h > 0$ between the date of the investment decision and the date when the investment is completed and becomes productive. Thus, the investment decision at time t brings additional capacity at time $t + h$.

¹Aguerrevere [2003] takes a similar form and discusses its flexibility.

3. At time $t = 0$, there is an initial stream of pending investments initiated in the interval $[-h, 0)$ that are going to be completed in the interval $[0, h)$. The function that represents the cumulative investment planned in the interval $[-h, s]$, $s \in (-h, 0)$, is a nonnegative non-decreasing càdlàg function. Therefore, the set where this function lives is

$$\mathcal{I}^0 = \{I^0 : [-h, 0) \rightarrow \mathbb{R}^+, s \mapsto I_s^0 \text{ càdlàg, non-decreasing}\}. \quad (3)$$

We set

$$I_{0-}^0 = \lim_{s \uparrow 0} I_s^0, \quad I^0 \in \mathcal{I}^0. \quad (4)$$

4. The decision variable is represented by a càdlàg non-decreasing $(\mathcal{F}_t)_{t \geq 0}$ -adapted process $(I_t)_{t \geq 0}$ that represents the cumulative investment from time 0 up to time $t \geq 0$. Therefore, formally dI_t is the investment at time $t \geq 0$. The set of admissible strategies, which we denote by \mathcal{I} , is the set

$$\mathcal{I} = \{I : \mathbb{R}^+ \times \Omega \rightarrow \mathbb{R}^+, I \text{ càdlàg, } (\mathcal{F}_t)_{t \geq 0}\text{-adapted, nondecreasing}\}. \quad (5)$$

5. Due to the considerations above, given $I^0 \in \mathcal{I}^0$, $I \in \mathcal{I}$ and setting $I_{-h-} = 0$, we assume that the production capacity $(K_t)_{t \geq 0}$ follows the controlled dynamics driven by the state equation

$$\begin{cases} dK_t = dI_{t-h}, \\ K_{0-} = k, \quad I_s = I_s^0, \quad s \in [-h, 0). \end{cases} \quad (6)$$

The equation above is a controlled locally deterministic differential equation with delay in the control variable. By solution to this equation, we mean the càdlàg process:

$$K_t = k + \bar{I}_{t-h}, \quad \forall t \geq 0, \quad (7)$$

where \bar{I} is the process

$$\bar{I}_t = \begin{cases} I_t^0, & t \in [-h, 0), \\ I_{0-}^0 + I_t, & t \geq 0. \end{cases} \quad (8)$$

Significantly, the randomness in (6) enters only through I , and there are no stochastic integrals.

6. The objective is to minimize over $I \in \mathcal{I}$ the functional

$$F(k, d, I^0; I) = \mathbb{E} \left[\int_0^{+\infty} e^{-\rho t} \left(\frac{1}{2} (K_t - D_t)^2 dt + q_0 dI_t \right) \right], \quad (9)$$

where $q_0 > 0$ is the unit investment cost.

Economic interpretation of the loss function. The program is a maximization of the social surplus or conversely the minimization of the deadweight loss. Given (1), the instantaneous net consumers' surplus is by standard definition:

$$S_t = \int_0^{K_t} (\eta + \theta(D_t - q)) dq - p_t K_t. \quad (10)$$

This is the sum of the values given to each unit consumed minus the price paid for them. If the unit production cost is η and if there is some fixed cost F per year, the instantaneous

producer's profit π_t is $(p_t - \eta)K_t - F$. The total instantaneous surplus $\text{TS}_t = S_t + \pi_t$ is therefore:

$$\text{TS}_t = \theta \int_0^{K_t} (D_t - q) dq - F \quad (11)$$

$$= \underbrace{-\frac{\theta}{2}(K_t - D_t)^2}_{\text{Depends on control}} + \underbrace{\frac{\theta}{2}D_t^2 - F}_{\text{Doesn't}}. \quad (12)$$

Maximizing the discounted social surplus minus the investment costs amounts to program (9), where the true investment cost q_0 is divided by θ .

Thus, the solution and (1) generate an electricity price process. It reflects the marginal cost plus a term, which can be negative, that reflects tension in the market.

Diffusion process. The process D satisfies the following conditions:² we assume that the coefficients $\mu, \sigma : \mathbb{R} \rightarrow \mathbb{R}$ in (2) are continuous with sublinear growth and regular enough to ensure the existence of a unique strong solution to (2). Further, we assume that this solution takes values in an open set \mathcal{O} of \mathbb{R} and that it is non-degenerate over this set, that is, $\sigma^2 > 0$ on \mathcal{O} . In the example we shall discuss in the next section, the set \mathcal{O} will be \mathbb{R} or $(0, +\infty)$. We observe that, due to the assumption of sublinear growth of μ, σ , standard estimates in SDEs (see, e.g., Krylov [1980, Ch. II]) show that there exist κ_0, κ_1 depending on μ, σ such that

$$\mathbb{E} \left[|D_t|^2 \right] \leq \kappa_0(1 + |d|^2)e^{\kappa_1 t}, \quad t \geq 0. \quad (13)$$

3 Solution

The problems with delay are by nature of infinite dimension. Referring to our case, the functional F defined in (9) depends not only on the initial k but also on the past of the control I^0 , which is a function. Nevertheless, the problem can be reformulated in terms of another one-dimensional state variable not affected by the delay. We rewrite the objective functional to introduce a new state variable, the so-called *committed capacity*.

The idea of the reformulation in control problems with delay is contained in Bar-Ilan et al. [2002] (cf. also Bruder and Pham [2009]) in the context of optimal stochastic impulse problems. Here, we develop this idea for singular stochastic control. It is worth stressing that, unlike Bar-Ilan et al. [2002], we simplify the approach by working not on the value function of the optimization problem but directly on the basic functional.

3.1 Reduction to a problem without delay

For the case of the domain for the couple of variables (k, d) of our problem, the set is:³

$$\mathcal{S} = \mathbb{R} \times \mathcal{O}. \quad (14)$$

Define the committed capacity as:

$$C_t := K_t + \bar{I}_t - \bar{I}_{t-h} = K_{t+h}. \quad (15)$$

²A reference for the theory of one-dimensional diffusions is Karatzas and Shreve [1991].

³The real problem is meaningful for $k \geq 0$; nevertheless, it is convenient from the mathematical point of view to allow the case of $k < 0$. Because the problem is irreversible and starts from $k \geq 0$, the capital remains nonnegative.

In differential form, the dynamics of C_t is

$$\begin{cases} dC_t = dI_t, \\ C_{0-} = c = k + I_{0-}^0. \end{cases} \quad (16)$$

Therefore, it does not contain the delay in the control variable.

From now on, the dependence of K on k, I^0, I ; the dependence of C on c, I ; and the dependence of D on d is denoted respectively as $K^{k, I^0, I}$, $C^{c, I}$, and D^d .

The crucial facts that allow the removal of the delay are the following.

1. The committed capacity is $(\mathcal{F}_t)_{t \geq 0}$ -adapted. This is due to the special structure of the controlled dynamics of K that makes $K_{t+h}^{k, I^0, I}$ known given the information \mathcal{F}_t .
2. Within the interval $[0, h)$, the control I does not affect the dynamics of $K^{k, I^0, I}$, which is (deterministic and) fully determined by I^0 . In other words, $K_t^{k, I^0, I^{(1)}} = K_t^{k, I^0, I^{(2)}}$ for every $t \in [0, h)$ and every $I^{(1)}, I^{(2)} \in \mathcal{I}$. Therefore, we can write without ambiguity K_t^{k, I^0} for $t \in [0, h)$ to refer to the ‘‘controlled’’ process K within the interval $[0, h)$.

Given these observations, we have the following:

Proposition 1.

$$F(k, d, I^0; I) = \mathbb{E} \left[\int_0^{+\infty} e^{-\rho t} (g(C_t^{c, I}, D_t^d) dt + q_0 d I_t) \right] + J(k, d, I^0), \quad (17)$$

where

$$J(k, d, I^0) = \frac{1}{2} \mathbb{E} \left[\int_0^h e^{-\rho t} (K_t^{k, I^0} - D_t^d)^2 dt \right], \quad (18)$$

and $g : \mathcal{S} \rightarrow \mathbb{R}^+$ is defined by

$$\begin{aligned} g(c, d) &:= \frac{1}{2} e^{-\rho h} \mathbb{E} [(c - D_h^d)^2] \\ &= \frac{1}{2} e^{-\rho h} (c^2 - 2\beta_0(d)c + \alpha_0(d)), \end{aligned} \quad (19)$$

where

$$\alpha_0(d) := \mathbb{E} [(D_h^d)^2], \quad \beta_0(d) := \mathbb{E} [D_h^d]. \quad (20)$$

Proof. Using the definition of g , the time-homogenous property of D , we have:

$$\begin{aligned} \mathbb{E} [g(C_t^{c, I}, D_t^d)] &= \frac{1}{2} e^{-\rho h} \mathbb{E} \left[\mathbb{E} [(c' - D_h^{d'})^2] \Big|_{c'=C_t^{c, I}, d'=D_t^d} \right] \\ &= \frac{1}{2} e^{-\rho h} \mathbb{E} \left[\mathbb{E} [(C_t^{c, I} - D_{t+h}^d)^2 \mid \mathcal{F}_t] \right] \\ &= \frac{1}{2} e^{-\rho h} \mathbb{E} [(C_t^{c, I} - D_{t+h}^d)^2] \\ &= \frac{1}{2} e^{-\rho h} \mathbb{E} [(K_{t+h}^{k, I^0, I} - D_{t+h}^d)^2]. \end{aligned} \quad (21)$$

Therefore, (9) can be rewritten as

$$\begin{aligned}
F(k, d, I^0; I) &= \mathbb{E} \left[\int_{[0, h)} e^{-\rho t} \left(\frac{1}{2} \left(K_t^{k, I^0, I} - D_t^d \right)^2 dt + q_0 d I_t \right) \right] \\
&\quad + \mathbb{E} \left[\int_{[h, +\infty)} e^{-\rho t} \left(\frac{1}{2} \left(K_t^{k, I^0, I} - D_t^d \right)^2 dt + q_0 d I_t \right) \right] \\
&= \mathbb{E} \left[\int_{[0, h)} e^{-\rho t} \left(\frac{1}{2} \left(K_t^{k, I^0, I} - D_t^d \right)^2 dt + q_0 d I_t \right) \right] \\
&\quad + \mathbb{E} \left[\int_0^{+\infty} e^{-\rho(t+h)} \left(\frac{1}{2} \left(K_{t+h}^{k, I^0, I} - D_{t+h}^d \right)^2 dt + q_0 d I_{t+h} \right) \right] \\
&= \mathbb{E} \left[\int_0^{+\infty} e^{-\rho t} (g(C_t^{c, I}, D_t^d) dt + q_0 d I_t) \right] + J(k, d, I^0). \tag{22}
\end{aligned}$$

□

Thus, the functional $J(k, d, I^0)$ defined in Proposition 1 does not depend on $I \in \mathcal{I}$. Therefore, by setting

$$G(c, d; I) := \mathbb{E} \left[\int_0^{+\infty} e^{-\rho t} (g(C_t^{c, I}, D_t^d) + q_0 d I_t) \right], \tag{23}$$

the original optimization problem of minimizing $F(k, d, I^0; \cdot)$ over \mathcal{I} is equivalent to the optimization problem *without delay*

$$v(c, d) := \inf_{I \in \mathcal{I}} G(c, d; I) \quad \text{subject to (16) and (2)}. \tag{24}$$

3.2 Solution characterization

In the sequel, to give sense to the problem (i.e., to guarantee finiteness), we make the standing assumption that the discount factor ρ satisfies

$$\rho > \max(\kappa_1, 0), \tag{25}$$

where κ_1 is the constant appearing in (13). This assumption guarantees that there is some κ depending on μ, σ s.t.

$$0 \leq v(c, d) \leq \kappa (1 + |c|^2 + |d|^2), \quad \forall (c, d) \in \mathcal{S}. \tag{26}$$

In particular, it implies that the value function v is finite and locally bounded.

Federico and Pham [2014] prove the following facts.⁴

1. v is convex with respect to the variable c
2. v is differentiable with respect to c , and v_c is continuous in \mathcal{S}
3. The function $d \mapsto v_c(c, d)$ does not increase for each $c \in \mathbb{R}$
4. $v_c \geq -q_0$

⁴Federico and Pham [2014] deal with reversible problems. We can apply their results by taking an infinite cost of disinvestment. The irreversible case with a profit maximization criterion is studied with similar generality in Ferrari [forth.].

In view of these facts, there is now the *continuation region*

$$\mathcal{C} := \{(c, d) \in \mathcal{S} \mid v_c(c, d) > -q_0\}, \quad (27)$$

and the *action region*

$$\mathcal{A} := \{(c, d) \in \mathcal{S} \mid v_c(c, d) = -q_0\}. \quad (28)$$

Therefore, \mathcal{C} and \mathcal{A} are disjoint and $\mathcal{S} = \mathcal{C} \cup \mathcal{A}$. Due to the continuity of v_c , the continuation region is an open set of \mathcal{S} , while the action region is a closed set of \mathcal{S} . Moreover, due to the monotonicity of $v_c(c, \cdot)$ and to the convexity of $v(\cdot, d)$, \mathcal{C} and \mathcal{A} can be rewritten as

$$\mathcal{C} = \{(c, d) \in \mathcal{S} \mid c > \hat{c}(d)\}, \quad \mathcal{A} = \{(c, d) \in \mathcal{S} \mid c \leq \hat{c}(d)\}, \quad (29)$$

where $\hat{c} : \mathcal{O} \rightarrow \mathbb{R}$ is a non-decreasing function. The latter function is the *optimal boundary* for the problem in the sense that it characterizes the optimal control. Thus, in this singular stochastic optimal control, the optimal control consists of keeping the state processes within the closure of the continuation region \mathcal{C} by reflecting the controlled process on the optimal boundary along the direction of the control. See Figure 1.

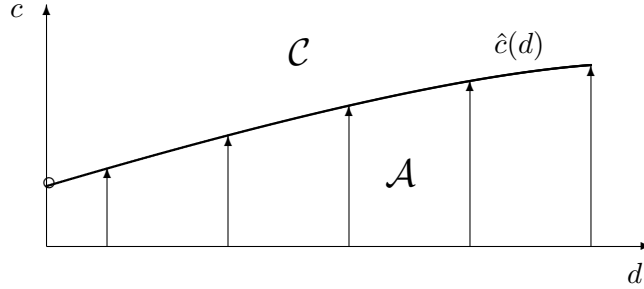


Figure 1: Continuation region (\mathcal{C}) and action region (\mathcal{A}) in the demand-committed capacity space.

We have an explicit characterization of \hat{c} , that is, of the optimal control that is provided by the following result.

Theorem 1. *The optimal boundary is explicitly written as*

$$\hat{c}(d) = \beta_0(d) - q_0 \rho e^{\rho h} + \frac{1}{2} \sigma^2(d) \frac{\beta''(d) \psi'(d) - \beta'(d) \psi''(d)}{\psi'(d)}, \quad (30)$$

where $\beta_0(d)$ is defined in (20) as $\mathbb{E}[D_h^d]$,

$$\beta(d) := \int_0^{+\infty} e^{-\rho t} \mathbb{E}[\beta_0(D_t^d)] dt, \quad (31)$$

and ψ is the strictly increasing fundamental solution to the linear ODE

$$[\mathcal{L}\phi](d) := \rho\phi(d) - \mu(d)\phi'(d) - \frac{1}{2}\sigma^2(d)\phi''(d) = 0, \quad d \in \mathcal{O}. \quad (32)$$

The unique optimal control for the problem (24) is the process

$$I_t^* = \left[\hat{c} \left(\sup_{0 \leq s \leq t} D_s^d \right) - c \right]^+. \quad (33)$$

Proof. Theorem 4.2 and Corollary 5.2 of Federico and Pham [2014] state the above claim⁵ with

$$\hat{c}(d) = \rho \left[\beta(d) - \frac{\psi(d)}{\psi'(d)} \beta'(d) - q_0 e^{\rho h} \right], \quad (34)$$

Therefore, if (34) can be rewritten in the form (30), then it is more suitable for interpretation.

To this purpose, because ψ solves the ODE (32), we have

$$\hat{c}(d) = \rho \beta(d) - \mu(d) \beta'(d) - \frac{1}{2} \sigma^2(d) \frac{\psi''(d)}{\psi'(d)} \beta'(d) - q_0 \rho e^{\rho h}. \quad (35)$$

On the other hand, it is well-known from the connection between the linear ODE and the one-dimensional diffusions that the function β solves the nonhomogeneous ODE (32) with the forcing term β_0 :

$$\mathcal{L}\beta = \beta_0. \quad (36)$$

Hence, combining (35) and (36), the expression (30) follows. \square

The socially optimal investment as calculated above is also, given the price process, a profit-maximizing investment for price-taking investors. Therefore, the optimum can be decentralized as a competitive equilibrium:

Proposition 2. *Let $p^{c,d,*}$ be the price process at the optimum. We have*

$$\mathbb{E} \left[\int_0^{+\infty} e^{-\rho t} (p_t^{c,d,*} - \eta) dt \right] \leq q_0, \quad (37)$$

with the equality holding if and only if $(c, d) \in \mathcal{A}$.

More precisely, investment is null if the expected present revenue from the additional unit is strictly lower than its cost, whereas all profitable opportunities are exhausted for the case of equality. The proof is in Appendix B.

3.3 Interpretation of the boundary

The boundary $\hat{c}(d)$ defined by (30) and the optimal control defined by (33) are easily amenable to interpretations. The boundary is composed of three terms:

$$\hat{c}(d) = \beta_0(d) - b_\rho - b_\sigma(d). \quad (38)$$

1. $\beta_0(d)$ is what d is expected to be h years later: one commits to what demand is expected to be when the investment becomes operative.
2. The discounting bias $b_\rho = q_0 \rho e^{\rho h}$ expresses the fact that the investment is paid right away, whereas the cost of the insufficient capacity is discounted.

This effect can be retrieved with a heuristic non-stochastic version of the model. Denote by Δ , the permanent downward shift in capacity, compared to the best estimate $\beta_0(d)$. The investor permanently suffers the loss $\frac{1}{2} \Delta^2$ per year in which the total actuarial cost is $\frac{1}{2} \frac{\Delta^2}{\rho}$. The total money saved by shifting capacity is $q_0 \Delta$. The investor minimizes

$$\frac{1}{2} e^{-\rho h} \frac{\Delta^2}{\rho} - q_0 \Delta \quad (39)$$

with respect to Δ . The minimizing Δ is $q_0 \rho e^{\rho h}$.

⁵Note however that here we have the term $e^{\rho h}$ multiplying q_0 . This is due to the fact that our function g is equal to the function g in Section 5 of Federico and Pham [2014] up to the constant $e^{-\rho h}$.

3. The precautionary bias

$$b_\sigma(d) := \frac{1}{2}\sigma^2(d) \left[\beta'(d) \frac{\psi''(d)}{\psi'(d)} - \beta''(d) \right]. \quad (40)$$

gives the security margin due to the stochastic nature of the demand process. It is null if, for example, $\sigma(d) = 0$.

The calculations go one step further if we assume the affine drift $\mu(d) = ad + b$. Then we have

$$\beta_0(d) = de^{ah} - bh \frac{1 - e^{ah}}{ah}. \quad (41)$$

The ratio must be taken as -1 when $a = 0$. Therefore, $\beta'' = 0$ in this case, and

$$b_\sigma(d) = \frac{1}{2}\sigma^2(d) \frac{e^{ah}}{\rho - a} \frac{\psi''(d)}{\psi'(d)}. \quad (42)$$

For the latter term $b_\sigma(d)$:

- The delay has an impact only if $a \neq 0$. The sign of a determines the impact of the delay: the uncertainty about the future grows (diminishes) when h increases if $a > 0$ ($a < 0$), which justifies a bigger (smaller) bias.
- The factor $\sigma^2(d)$ is local, it takes into account the local risk only.
- The factor $\frac{\psi''(d)}{\psi'(d)} > 0$ takes into account the global risk.⁶ This term is a kind of absolute risk aversion related to the dynamics of D , not the delay.

4 Geometric Brownian Motion

4.1 The boundary

In the case where the demand follows a geometric Brownian motion (GBM):

$$dD_t = \mu D_t dt + \sigma D_t dW_t, \quad \mu \in \mathbb{R}, \sigma > 0, \quad (43)$$

with initial datum $d > 0$, the minimal constant κ_1 for which (13) is verified is $2\mu + \sigma^2$. Therefore, according to (25), we assume that

$$\rho > 2\mu + \sigma^2. \quad (44)$$

In this case $\mathcal{O} = (0, +\infty)$ and

$$\beta_0(d) = e^{\mu h} d \quad \text{and} \quad \beta(d) = \frac{e^{\mu h}}{\rho - \mu} d. \quad (45)$$

Moreover,

$$[\mathcal{L}\phi](d) = \rho\phi(d) - \mu d\phi'(d) - \frac{1}{2}\sigma^2 d^2 \phi''(d), \quad \phi \in C^2(\mathcal{O}; \mathbb{R}), \quad (46)$$

and the fundamental increasing solution to $\mathcal{L}\phi = 0$ is

$$\psi(d) = d^m, \quad (47)$$

⁶Rogers and Williams [2000, Prop. (50.3), Ch. V (p.292)] show that ψ strictly increases and is convex.

where m is the positive root of the equation

$$\rho - \mu m - \frac{1}{2}\sigma^2 m(m-1) = 0. \quad (48)$$

Due to Theorem 1, we have

$$\hat{c}(d) = de^{\mu h} - q_0 \rho e^{\rho h} - \frac{1}{2}\sigma^2 \frac{e^{\mu h}}{\rho - \mu} (m-1)d, \quad (49)$$

with

$$m = \frac{1}{\sigma^2} \left(\sqrt{\left(\mu - \frac{1}{2}\sigma^2\right)^2 + 2\rho\sigma^2} - \left(\mu - \frac{1}{2}\sigma^2\right) \right). \quad (50)$$

Further, (44) implies $m > 2$.

4.2 Comparative statics

Note that

$$\hat{c}(d) = Ad - q_0 \rho e^{\rho h}, \text{ with } A = \frac{1}{2} \frac{e^{\mu h}}{\rho - \mu} \left(2\rho - \mu + \frac{1}{2}\sigma^2 - \sqrt{\left(\mu - \frac{1}{2}\sigma^2\right)^2 + 2\rho\sigma^2} \right). \quad (51)$$

The next result analyzes the sensitivity of the boundary, and thus of the action region with respect to the parameters of the model.

Proposition 3. *The boundary in the GBM case has the following properties:*

1. $\frac{\partial \hat{c}(d)}{\partial q_0} < 0$
2. $A > 0$
3. $\frac{h}{A} \frac{\partial A}{\partial h} = \mu h$, and it has the sign of μ
4. $\frac{\sigma}{A} \frac{\partial A}{\partial \sigma} = -\frac{\sigma^2}{\sqrt{\left(\mu - \frac{1}{2}\sigma^2\right)^2 + 2\rho\sigma^2}} < 0$
5. $\frac{\mu}{A} \frac{\partial A}{\partial \mu} = \mu h + \frac{1}{2} \frac{\mu}{\rho - \mu} \left(1 - \frac{\mu + \frac{1}{2}\sigma^2}{\sqrt{\left(\mu - \frac{1}{2}\sigma^2\right)^2 + 2\rho\sigma^2}} \right)$, and it has the sign of μ
6. $\frac{\rho}{A} \frac{\partial A}{\partial \rho} = \frac{1}{2} \frac{\rho\sigma^2 + \mu^2 - \frac{1}{2}\mu\sigma^2 - \mu\sqrt{\left(\mu - \frac{1}{2}\sigma^2\right)^2 + 2\rho\sigma^2}}{(\rho - \mu)\sqrt{\left(\mu - \frac{1}{2}\sigma^2\right)^2 + 2\rho\sigma^2}} > 0$

Proof. Properties 1, 3, and 4 are immediate.

The other properties involve the same square root for the denominator. The signs are determined in all of the cases by showing that the numerators can be rearranged and simplified to show that their signs depend only on the sign of $\rho(\rho - \mu)$, which is positive given (44). These determinations ensure that the terms have the same sign for all of the relevant parameters. \square

Property 2 says that the investment is responsive to the current demand. Property 3 shows the importance of μ : when, e.g., $\mu > 0$, a longer delay means above all a higher future demand, hence a higher investment. Property 4 confirms that more uncertainty makes the investor more cautious. A similar logic explains property 5.

If the focus is on the precautionary bias only, then

$$b_\sigma(d) = \frac{1}{2} \frac{e^{\mu h}}{\rho - \mu} \left(\sqrt{\left(\mu - \frac{1}{2}\sigma^2\right)^2 + 2\rho\sigma^2} - \left(\mu + \frac{1}{2}\sigma^2\right) \right) d > 0. \quad (52)$$

But,

$$\frac{\mu}{b_\sigma(d)} \frac{\partial b_\sigma(d)}{\partial \mu} = \mu \left(h - \frac{1}{2} \frac{1}{\rho - \mu} \frac{2\rho - \mu + \frac{1}{2}\sigma^2 - \sqrt{\left(\mu - \frac{1}{2}\sigma^2\right)^2 + 2\rho\sigma^2}}{\sqrt{\left(\mu - \frac{1}{2}\sigma^2\right)^2 + 2\rho\sigma^2}} \right). \quad (53)$$

In the second factor, the first term is positive and the second one is negative. We take $\mu > 0$ for the discussion. The overall sign of the elasticity depends, for example, on h : if h is small, then the elasticity is negative (the precautionary bias decreases as μ increases); if h is big, then the elasticity is positive (the precautionary bias increases).

Property 6 shows that the discount rate has two clear antagonistic effects: the discounting bias increases in absolute value with respect to ρ because the benefits of investment are discounted, and the precautionary bias decreases in absolute value because the future costs are discounted. Thus,

$$\frac{\rho}{b_\sigma(d)} \frac{\partial b_\sigma(d)}{\partial \rho} = \frac{1}{2} \frac{\rho}{\rho - \mu} \frac{\mu + \frac{1}{2}\sigma^2 - \sqrt{\left(\mu - \frac{1}{2}\sigma^2\right)^2 + 2\rho\sigma^2}}{\sqrt{\left(\mu - \frac{1}{2}\sigma^2\right)^2 + 2\rho\sigma^2}} < 0. \quad (54)$$

4.3 Simulations

If $\rho = 0.08$, $\mu = 0.03$, and $\sigma = 0.1$, then the elasticity of A w.r.t. to h is 3% at $h = 1$ and 24% at $h = 8$. The elasticity of A w.r.t. σ is -21% whatever the h . The elasticity of $b_\sigma(d)$ w.r.t. to h is 3% for $h = 1$ and 24% for $h = 8$. The elasticity of $b_\sigma(d)$ w.r.t. σ is 153% whatever the h .

Figure 2 shows a trajectory of demand for $h = 8$ and $\sigma = 0.06$ with a starting point of $d = 10^3$. The committed capacity stops growing during the episode where demand is (fortuitously) stabilized. Given the long delay, the committed capacity is almost always ahead of the demand.

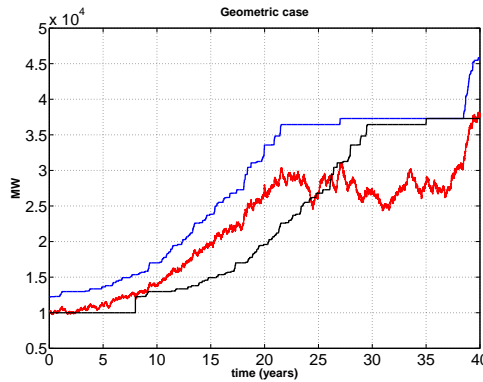


Figure 2: Demand, committed, and installed capacity behavior in the geometric case for $h = 8$ years and when $\sigma = 0.06$.

5 CIR model

5.1 The boundary

For the case where the demand follows a Cox-Ingersoll-Ross model:

$$dD_t = \gamma(\delta - D_t)dt + \sigma\sqrt{D_t}dW_t, \quad \gamma, \delta, \sigma > 0, \quad (55)$$

then, under the assumption $2\gamma\delta \geq \sigma^2$, we have $\mathcal{O} = (0, +\infty)$. We suppose that this assumption is true. Also in this case (13) is verified with $\kappa_1 = \varepsilon$ for any $\varepsilon > 0$. Therefore, according to (25), we assume that $\rho > 0$.

This case has

$$\beta_0(d) = e^{-\gamma h}d + (1 - e^{-\gamma h})\delta \quad \text{and} \quad \beta(d) = e^{-\gamma h} \frac{d - \delta}{\rho + \gamma} + \frac{\delta}{\rho}. \quad (56)$$

Moreover,

$$[\mathcal{L}\phi](d) = \rho\phi(d) - \gamma(\delta - d)\phi'(d) - \frac{1}{2}\sigma^2 d\phi''(d), \quad \phi \in C^2(\mathcal{O}; \mathbb{R}), \quad (57)$$

and the increasing fundamental solution to $\mathcal{L}\phi = 0$ is

$$\psi(d) = M(\rho/\gamma, 2\gamma\delta/\sigma^2, 2\gamma d/\sigma^2), \quad (58)$$

where M is the confluent hypergeometric function of the first type.⁷

Hence,

$$\hat{c}(d) = e^{-\gamma h}d + (1 - e^{-\gamma h})\delta - q_0\rho e^{\rho h} - \frac{1}{2}\sigma^2 \frac{e^{-\gamma h}}{\rho + \gamma} \frac{\psi''(d)}{\psi'(d)} \quad (59)$$

$$= \delta + e^{-\gamma h}(d - \delta) - q_0\rho e^{\rho h} - e^{-\gamma h} \frac{\sigma^2}{2\gamma\delta + \sigma^2} \frac{M\left(2 + \frac{\rho}{\gamma}, 2 + \frac{2\gamma\delta}{\sigma^2}, \frac{2d\gamma}{\sigma^2}\right)}{M\left(1 + \frac{\rho}{\gamma}, 1 + \frac{2\gamma\delta}{\sigma^2}, \frac{2d\gamma}{\sigma^2}\right)} d. \quad (60)$$

5.2 Comparative statics

The analysis is done with a stylized version of the boundary based on the following results.

Proposition 4. *The boundary in the CIR model verifies:*

1. *Tangent at $d = 0$:*

$$\text{Tangent}(d) = \frac{\gamma\delta}{\gamma\delta + \frac{\sigma^2}{2}} e^{-\gamma h}d + \left(1 - e^{-h\gamma}\right)\delta - q_0\rho e^{h\rho} \quad (61)$$

2. *Asymptote when $d \rightarrow \infty$:*

$$\text{Asymptote}(d) = \frac{\rho}{\rho + \gamma} e^{-\gamma h}d + \left(1 - \frac{\rho}{\rho + \gamma} e^{-\gamma h}\right)\delta - \frac{\sigma^2}{2\gamma} \frac{\rho}{\rho + \gamma} e^{-\gamma h} - q_0\rho e^{\rho h} \quad (62)$$

3. *The intersection between the two lines above is*

$$\left(\delta + \frac{\sigma^2}{2\gamma}, \delta - q_0\rho e^{\rho h}\right) \quad (63)$$

⁷See Abramowitz and Stegun [1965].

Proof. The calculation of the tangent is immediately given by the series expansion of M :

$$M(a, b, z) = \sum_{s=0}^{\infty} \frac{(a)_s}{(b)_s s!} z^s = 1 + \frac{a}{b} z + \frac{a(a+1)}{b(b+1)2!} z^2 + \dots \quad (64)$$

To calculate the asymptote, we start from (34). Let $M(a, b; z)$ be the confluent hypergeometric function of the first type with parameters a, b . Then

- (i) $zM'(a, b; z) = a(M(a+1, b; z) - M(a, b; z))$ (here M' is the derivative w.r.t. z)
- (ii) $M(a, b; z) \sim \frac{\Gamma(b)}{\Gamma(a)} e^z z^{a-b}$, when $z \rightarrow \infty$

Using (i),

$$\frac{M(a, b; z)}{zM'(a, b; z)} = \frac{M(a, b; z)}{zM'(a, b; z)} = \frac{M(a, b; z)}{a(M(a+1, b; z) - M(a, b; z))} = \frac{1}{a \left(\frac{M(a+1, b; z)}{M(a, b; z)} - 1 \right)}, \quad (65)$$

and using (ii), we get

$$\lim_{z \rightarrow \infty} \frac{M(a, b; z)}{zM'(a, b; z)} = 0. \quad (66)$$

Thus, the slope of the asymptote of \hat{c} is

$$\alpha := \lim_{d \rightarrow \infty} \frac{\hat{c}(d)}{d} = \lim_{d \rightarrow \infty} \frac{\rho \beta(d)}{d} = \frac{\rho}{\rho + \gamma} e^{-\gamma h}. \quad (67)$$

The calculation is:

$$\kappa := \lim_{d \rightarrow \infty} \hat{c}(d) - \alpha d. \quad (68)$$

Therefore,

$$\kappa = \delta \left(1 - \frac{\rho}{\rho + \gamma} e^{-\gamma h} \right) - \kappa_1 \frac{\rho}{\rho + \gamma} e^{-\gamma h} - q_0 \rho e^{\rho h}, \quad (69)$$

where

$$\kappa_1 := \lim_{d \rightarrow \infty} \frac{\psi(d)}{\psi'(d)}. \quad (70)$$

To compute the latter, (i) is used to get

$$\frac{M(a, b; z)}{M'(a, b; z)} = \frac{z}{a \left(\frac{M(a+1, b; z)}{M(a, b; z)} - 1 \right)}. \quad (71)$$

Then, the use of (ii) and $a\Gamma(a) = \Gamma(a+1)$ gets

$$\lim_{z \rightarrow \infty} \frac{M(a, b; z)}{M'(a, b; z)} = \lim_{z \rightarrow \infty} \frac{z}{z - a} = 1. \quad (72)$$

Thus, given the function of interest $M(\rho/\gamma, 2\gamma\delta/\sigma^2, 2\gamma d/\sigma^2)$, $\kappa_1 = \frac{\sigma^2}{2\gamma}$ is obtained. The expression of the asymptote follows.

The expression of the intersection is a direct implication of points 1. and 2. of this Proposition. \square

For the economic interpretations, $\hat{c}(d)$ has the stylized expression:

$$\min \{ \text{Tangent}(d), \text{Asymptote}(d) \}. \quad (73)$$

The kink point $(\delta + \frac{\sigma^2}{2\gamma}, \delta - q_0 \rho e^{\rho h})$ is close to (δ, δ) if the uncertainty is small compared to the convergence speed.

When h and σ are small, the tangent is the 45 degree line minus the discounting bias: committed capacity follows demand. The asymptote is conservative because the capacity increases by only $\frac{\rho}{\rho+\gamma}$ for each unit increase of demand.

With a large convergence speed γ compared to the volatility (a small σ^2/γ), the uncertainty has a negligible impact on the boundary.

The tangent and the asymptote become flatter and flatter as h increases: current conditions as measured by d matter less when the delay is longer. The flattening effect is exponential. Reversion to the mean implies that as the delay increases, the current demand progressively loses relevance for the prediction of the future demand. No precautionary bias is needed at the limit for the large delays.

5.3 Simulations

The CIR model provides a rich setting to analyze the effects of the time-to-build, of the volatility, and of different convergence rates.

The following reference parameters are: the initial value demand is 10, the discount rate is $\rho = 0.08$, the long-term demand is $\delta = 20$, and the demand approaches this limit at a speed $\gamma = 0.8$,

The alternative scenarios consider the four cases where the delay $h = 1$ or 8, and the demand volatility $\sigma = 0.1$ or 0.05. Figure 3 (Left) gives the four boundaries. However, the two boundaries with $h = 8$ are almost completely flat and confounded. The other two have very close tangents and asymptotes and are hard to discern visually. The 45 degree line is also drawn.

Figure 3 (Right) shows a trajectory for $h = 8$ and $\sigma = 0.2$. The committed capacity is immediately at the maximum and then varies very little except when the demand becomes exceptionally high for the first time.

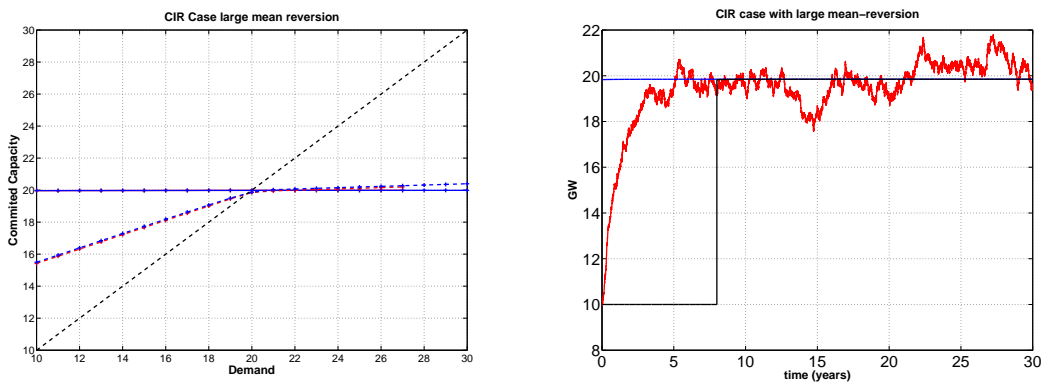


Figure 3: (Left) Investment boundaries. (Right) Demand, committed and installed capacity behavior with the CIR model for an eight-year delay and a large mean-reversion ($\gamma = 0.8$).

Figure 4 (Left) shows four boundaries with the same parameters as in Figure 3 except that $\gamma = 0.08$. The boundaries have a less marked kink than with a faster convergence

rate: boundaries are more like the 45 degree line because the demand evolves much more slowly, and they are much more alike in terms of positions and slopes.

Figure 4 (Right) shows a trajectory for $h = 8$ and $\sigma = 0.2$. The committed capacity is more responsive to the current conditions because they are better predictors of the future demand than when γ is large. This effect plays for demand levels below 20 or above.

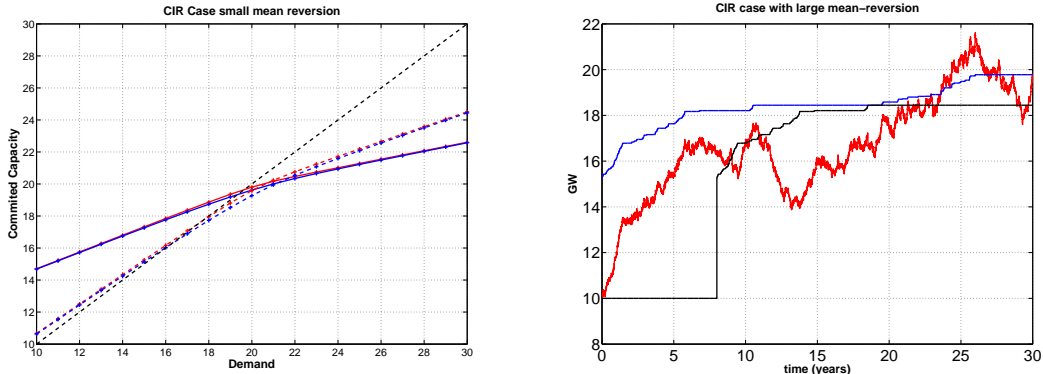


Figure 4: (Left) Investment boundaries. (Right) Demand, committed and installed capacity behavior in the CIR case for an eight-year delay and a small mean-reversion ($\gamma = 0.08$).

6 Conclusion

Electricity demand has a random part and is price sensitive. Our minimization of an expected quadratic loss is founded on microeconomic theory, and our optimal solution can be implemented as a competitive equilibrium. In this paper where the delay between the investment decision and activation of the new capacity is accounted for, we have characterized the explicit decision rules for important classes of demand processes.

The benefits of closed-form solutions cannot be overstated, because we can show the interaction, in investors decisions, between the time-to-build and the uncertainty. In particular, we identify the base rule and the two corrective terms: the investor should invest if his or her committed capacity (i.e., the capacity in the pipeline) is below the best linear estimate of the future demand, the given demand today, and the delay minus a discounting bias and a precautionary bias determined by uncertainty and global risk aversion. The latter term varies substantially with the demand model.

In the arithmetic Brownian motion, the delay and the uncertainty have additive separate effects. In the geometric Brownian motion, the shocks are amplified exponentially so that with a longer delay, restricting the future capacity becomes more costly. On the other hand, the discounting bias is accentuated by the delay. The question of which of these opposite effects dominates the other as the delay increases can be addressed with our explicit expressions. In the CIR case, reversion to the mean implies that as the delay increases, the current demand progressively loses relevance for the prediction of the future demand. No precautionary bias is needed at the limit for the large delays.

A Arithmetic Brownian Motion

A.1 The Frontier

With an arithmetic Brownian model of demand, our model is a particular case of [Bar-Ilan et al. \[2002\]](#), where the fixed investment cost is null. The optimal strategy is simpler. The

demand dynamics are:

$$dD_t = \mu dt + \sigma dW_t, \quad \mu \in \mathbb{R}, \sigma > 0, \quad (74)$$

then $\mathcal{O} = \mathbb{R}$ and (13) is verified with $\kappa_1 = \varepsilon$ for each $\varepsilon > 0$. Therefore, according to (25), we assume that $\rho > 0$. Thus,

$$[\mathcal{L}\phi](d) = \rho\phi(d) - \mu\phi'(d) - \frac{1}{2}\sigma^2\phi''(d), \quad \phi \in C^2(\mathcal{O}). \quad (75)$$

The increasing fundamental solution to $\mathcal{L}\phi = 0$ is $\psi(d) = e^{\lambda d}$ where λ is the positive solution to

$$\rho - \mu\lambda - \frac{1}{2}\sigma^2\lambda^2 = 0. \quad (76)$$

Because, in this case,

$$\beta_0(d) = d + \mu h \quad \text{and} \quad \beta(d) = \frac{\mu h}{\rho} + \frac{d}{\rho} + \frac{\mu}{\rho^2}. \quad (77)$$

Due to Theorem 1, \hat{c} is affine:

$$\hat{c}(d) = d + \mu h - q_0 \rho e^{\rho h} - \frac{\sqrt{\mu^2 + 2\rho\sigma^2} - \mu}{2\rho}. \quad (78)$$

A.2 Comparative statics

Consider that

$$\frac{\partial^2 \hat{c}(d)}{\partial h \partial \sigma} = 0. \quad (79)$$

Whatever the time to build h , the investment is retarded in the same way by an increase in σ , and conversely. This additive separability makes it difficult to find the cross effects between the uncertainty and the delay with this model, contrary to Bar-Ilan et al. [2002].

An increase in uncertainty always retards investment:

$$\partial \hat{c}(d) / \partial \sigma = -\frac{\sigma}{\sqrt{\mu^2 + 2\rho\sigma^2}} < 0. \quad (80)$$

The variation of $\hat{c}(d)$ with respect to the time-to-build h is

$$\partial \hat{c}(d) / \partial h = \mu - q_0 \rho^2 e^{\rho h}. \quad (81)$$

The effect is to hasten investment if μ is relatively large. If h is relatively large, then the cost of investment appears large compared to the future discounted damage, and investment is retarded. We retrieve the effects encountered in the case of the geometric Brownian motion.

Furthermore,

$$\partial \hat{c}(d) / \partial \mu = h + \frac{1}{2\rho} \left(1 - \frac{\mu}{\sqrt{\mu^2 + 2\rho\sigma^2}} \right) > 0, \quad (82)$$

and

$$\partial \hat{c}(d) / \partial \rho = -q_0(1 + h\rho)e^{\rho h} + \frac{1}{2} \left(\frac{\mu^2 + \rho\sigma^2 - \mu\sqrt{\mu^2 + 2\rho\sigma^2}}{\rho^2\sqrt{\mu^2 + 2\rho\sigma^2}} \right). \quad (83)$$

In the latter expression, the first term is negative (the discounting bias is reinforced), whereas the second term is positive (the precautionary bias is attenuated). Thus, we get the same effects encountered in the case of the geometric Brownian motion.

A.3 Simulations

On Figure 5 (Left), $b := \hat{c}(d) - d$ is given as a function of σ , for two contrasted values of h (1 and 8 years). The other parameters are: $\rho = 0.08$, $\mu = 300$, with an initial demand of 10,000 MW and demand, committed capacity, and installed capacity all equal at date 0 ($D_0 = C_0 = K_0$).

Figure 5 (Left) shows that the impact of the time-to-build with these values is much more important than the impact of uncertainty. Indeed, numerically, $\partial\hat{c}(d)/\partial h$ is of the order of 300 whereas $\partial\hat{c}(d)/\partial\sigma$ is of the order of -1 . The first effect largely dominates.

By and large, this result is in line with Bar-Ilan et al. [2002]. In their setting, increasing the time-to-build from one year to eight years reverses the relation between uncertainty and investment, which is possible only because they are not separable. Specifically, for a long delay, an increase in uncertainty hastens investments but decreases their level. But, these effects are very small (Bar-Ilan et al. [2002, pp. 85, Figure 2]).

The excess of committed capacity does not imply that the system will hold an excess of installed capacity. In fact, the reverse is observed in Figure 5 (Right). In the case of a delay of eight years, an excess of committed capacity as measured by the value of b is 1,873 MW. But in eight years, the demand will grow on average 2,400 MW, which clearly indicates that the optimal strategy is to avoid excess installed capacity.

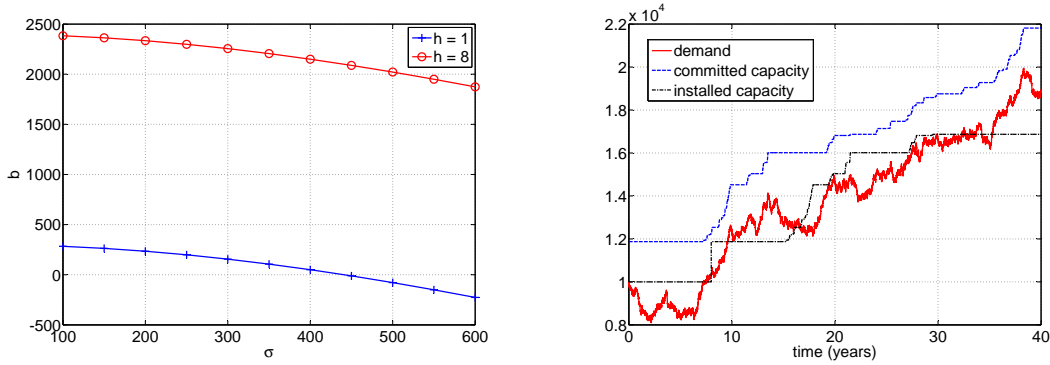


Figure 5: (Left) $\hat{c}(d) - d$ as a function of σ for two values of the time-to-build, $h = 1$ (blue crosses) and $h = 8$ (red circles). (Right) Demand, committed and installed capacity behavior for an eight-year delay, $\sigma = 600$ MW·year^{1/2}.

B Proof of Proposition 2

Let $(c, d) \in \mathcal{S}$. We prove first that

$$v_c(c, d) = \mathbb{E} \left[\int_0^{+\infty} e^{-\rho t} g_c(C_t^{c,*}, D_t^d) dt \right], \quad (84)$$

where C^* is the optimal state process associated to the optimal control I^* provided by Theorem 1. Let $I^* \in \mathcal{I}$ be optimal for (c, d) . Therefore,

$$\frac{G(c + \varepsilon, d; I^*) - G(c, d; I^*)}{\varepsilon} \geq \frac{v(c + \varepsilon, d) - v(c, d)}{\varepsilon}. \quad (85)$$

On the other hand,

$$\frac{G(c + \varepsilon, d; I^*) - G(c, d; I^*)}{\varepsilon} = \mathbb{E} \left[\int_0^{+\infty} e^{-\rho t} \frac{g(C_t^{c, I^*} + \varepsilon, D_t^d) - g(C_t^{c, I^*}, D_t^d)}{\varepsilon} dt \right]. \quad (86)$$

Taking the limsup in (85) and taking into account (86), we get

$$\limsup_{\varepsilon \downarrow 0} \frac{v(c + \varepsilon, d) - v(c, d)}{\varepsilon} \leq \mathbb{E} \left[\int_0^{\infty} e^{-\rho t} g_c(C_t^{c,*}, D_t^d) dt \right]. \quad (87)$$

On the other hand, arguing symmetrically with $c - \varepsilon$, we get

$$\liminf_{\varepsilon \downarrow 0} \frac{v(c, d) - v(c - \varepsilon, d)}{\varepsilon} \geq \mathbb{E} \left[\int_0^{+\infty} e^{-\rho t} g_c(C_t^{c,*}, D_t^d) dt \right]. \quad (88)$$

Therefore, (87) and (88) assert (84).

Because of equation (84), $v_c \geq -q_0$, the definition of \mathcal{A} , and because of

$$g_c(C_t^{c,*}, D_t^d) = e^{-\rho h} \mathbb{E} \left[c - D_h^d \right]; \quad (89)$$

the quadratic surplus application based on equation (1) as an expected discounted revenue (price minus marginal cost) yields the result.

References

- M. Abramowitz and I.A. Stegun, eds., *Handbook of Mathematical Functions with Formulas, Graphs, and Mathematical Tables*. Chapter 13, New York: Dover, 1965.
- F.L. Aguerrevere. Equilibrium Investment Strategies and Output Price Behavior: A Real-Options Approach. *Review of Financial Studies*, 16(4): 1239–1272, 2003.
- A. Bar-Ilan and W.C. Strange. Investment Lags. *American Economic Review*, 86(3): 610–623, June 1996.
- A. Bar-Ilan, A. Sulem, and A. Zanello. Time-to-Build and Capacity Choice. *Journal of Economic Dynamics and Control*, 26: 69–98, 2002.
- B. Bruder and H. Pham. Impulse Control Problem on Finite Horizon with Execution Delay. *Stochastic Processes and their Applications*, 119: 1436–1469, 2009.
- S. Federico and H. Pham. Characterization of the Optimal Boundaries in Reversible Investment Problems. 2014. To appear in *SIAM Journal of Control and Optimization*.
- G. Ferrari. On an Integral Equation for the Free-Boundary of Stochastic, Irreversible Investment Problems. 2013. To appear in *Annals of Applied Probability*.
- S.R. Grenadier. *Equilibrium with Time-to-Build: A Real Options Approach*. Project Flexibility, Agency and Competition. M. Brennan and L. Trigeorgis (eds), Oxford University Press, 2000.
- S.R. Grenadier. Option Exercise Games: An Application to the Equilibrium Investment Strategies of Firms. *Review of Financial Studies*, 15(3): 691–721, 2002.
- N. Ikeda and S. Watanabe. *Stochastic Differential Equations and Diffusion Processes*. North-Holland, 1981.
- I. Karatzas and S.E. Shreve. *Brownian Motion and Stochastic Calculus*. Springer-Verlag, 1991.
- N.V. Krylov. *Controlled Diffusion Processes*. Springer-Verlag, 1980.
- S. Majd and R.S. Pindyck. Time-to-Build, Option Value and Investment Decisions. *Journal of Financial Economics*, 18: 7–27, 1986.
- R. McDonald and D. Siegel. The Value of Waiting to Invest. *Quarterly Journal of Economics*, 101: 707–727, 1986.
- A. Milne and A.E. Whalley. ‘Time to Build, Option Value and Investment Decisions’: A Comment. *Journal of Financial Economics*, 56: 325–332, 2000.

- G. Pacheco de Almeida and P. Zemsky. The Effect of Time-to-Build on Strategic Investment under Uncertainty. *RAND Journal of Economics*, 34(1): 166–182, 2003.
- L.C.G. Rogers and D. Williams. *Diffusions, Markov Processes and Martingales*. Vol. 2: Itô Calculus, 2nd Edition (2000), Cambridge University Press.