



Herschel/HIFI observations of CO, H₂O and NH₃ in Monoceros R2

P. Pilleri, A. Fuente, J. Cernicharo, V. Ossenkopf, O. Berné, M. Gerin, J. Pety, J. R. Goicoechea, J. R. Rizzo, J. Montillaud, et al.

► To cite this version:

P. Pilleri, A. Fuente, J. Cernicharo, V. Ossenkopf, O. Berné, et al.. Herschel/HIFI observations of CO, H₂O and NH₃ in Monoceros R2. *Astronomy and Astrophysics - A&A*, 2012, 544, pp.110. 10.1051/0004-6361/201118481 . hal-00992521

HAL Id: hal-00992521

<https://hal.science/hal-00992521>

Submitted on 9 Jan 2023

HAL is a multi-disciplinary open access archive for the deposit and dissemination of scientific research documents, whether they are published or not. The documents may come from teaching and research institutions in France or abroad, or from public or private research centers.

L'archive ouverte pluridisciplinaire **HAL**, est destinée au dépôt et à la diffusion de documents scientifiques de niveau recherche, publiés ou non, émanant des établissements d'enseignement et de recherche français ou étrangers, des laboratoires publics ou privés.

***Herschel*/HIFI observations of CO, H₂O and NH₃ in Monoceros R2^{★,★★}**

P. Pilleri^{1,2}, A. Fuente², J. Cernicharo¹, V. Ossenkopf^{3,4}, O. Berné^{5,6}, M. Gerin⁷, J. Pety⁸, J. R. Goicoechea¹, J. R. Rizzo¹, J. Montillaud⁹, M. González-García¹⁰, C. Joblin^{5,6}, J. Le Bourlot¹¹, F. Le Petit¹¹, and C. Kramer¹⁰

¹ Centro de Astrobiología (INTA-CSIC), Ctra. M-108, km 4, 28850 Torrejón de Ardoz, Spain
 e-mail: p.pilleri@oan.es

² Observatorio Astronómico Nacional, Apdo. 112, 28803 Alcalá de Henares, Spain

³ I. Physikalisches Institut der Universität zu Köln, Zùlpicher Straße 77, 50937 Köln, Germany

⁴ SRON Netherlands Institute for Space Research, PO Box 800, 9700 AV Groningen, The Netherlands

⁵ Université de Toulouse, UPS-OMP, IRAP, 31028 Toulouse, France

⁶ CNRS, IRAP, 9 Av. colonel Roche, BP 44346, 31028 Toulouse Cedex 4, France

⁷ LERMA, Observatoire de Paris, 61 Av. de l'Observatoire, 75014 Paris, France

⁸ Institut de Radioastronomie Millimétrique, 300 rue de la Piscine, 38406 Saint Martin d'Hères, France

⁹ Department of Physics, PO Box 64, 00014, University of Helsinki, Finland

¹⁰ Instituto de Radio Astronomía Milimétrica (IRAM), Avenida Divina Pastora 7, Local 20, 18012 Granada, Spain

¹¹ Observatoire de Paris, LUTH and Université Denis Diderot, Place J. Janssen, 92190 Meudon, France

Received 18 November 2011 / Accepted 6 June 2012

ABSTRACT

Context. Mon R2, at a distance of 830 pc, is the only ultracompact H II region (UCH II) where the associated photon-dominated region (PDR) can be resolved with *Herschel*. Owing to its brightness and proximity, it is one of the best-suited sources for investigating the chemistry and physics of highly UV-irradiated PDRs.

Aims. Our goal is to estimate the abundance of H₂O and NH₃ in this region and investigate their origin.

Methods. We present new observations ([C II], ¹²CO, ¹³CO, C¹⁸O, o-H₂O, p-H₂O, o-H₂¹⁸O and o-NH₃) obtained with the HIFI instrument onboard *Herschel* and the IRAM-30 m telescope. We investigated the physical conditions in which these lines arise by analyzing their velocity structure and spatial variations. Using a large velocity gradient approach, we modeled the line intensities and derived an average abundance of H₂O and NH₃ across the region. Finally, we modeled the line profiles with a non-local radiative transfer model and compared these results with the abundance predicted by the Meudon PDR code.

Results. The variations of the line profiles and intensities indicate complex geometrical and kinematical patterns. In several tracers ([C II], CO 9 → 8 and H₂O) the line profiles vary significantly with position and have broader line widths toward the H II region. The H₂O lines present strong self-absorption at the ambient velocity and emission in high-velocity wings toward the H II region. The emission in the o-H₂¹⁸O ground state line reaches its maximum value around the H II region, has smaller linewidths and peaks at the velocity of the ambient cloud. Its spatial distribution shows that the o-H₂¹⁸O emission arises in the PDR surrounding the H II region. By modeling the o-H₂¹⁸O emission and assuming the standard [¹⁶O]/[¹⁸O] = 500, we derive a mean abundance of o-H₂O of ~10⁻⁸ relative to H₂. The ortho-H₂O abundance, however, is larger (~1 × 10⁻⁷) in the high-velocity wings detected toward the H II region. Possible explanations for this larger abundance include an expanding hot PDR and/or an outflow. Ammonia seems to be present only in the envelope of the core with an average abundance of ~2 × 10⁻⁹ relative to H₂.

Conclusions. The Meudon PDR code, which includes only gas-phase chemical networks, can account for the measured water abundance in the high velocity gas as long as we assume that it originates from a ≤1 mag hot expanding layer of the PDR, i.e. that the outflow has only a minor contribution to this emission. To explain the water and ammonia abundances in the rest of the cloud, the molecular freeze out and grain surface chemistry would need to be included.

Key words. ISM: structure – ISM: molecules – HII regions – ISM: individual objects: Mon R2 – photon-dominated region (PDR) – submillimeter: ISM

1. Introduction

Although the processes that lead to the formation of massive stars are still not fully understood, it is generally agreed that massive stellar objects are formed by the collapse of a dense

molecular cloud into one or multiple self-gravitating pre-stellar objects. Once the star is born, the innermost layers of the molecular cloud are heated and ionized by the strong UV radiation field, producing what is called an ultra compact H II region (UCH II). These regions are characterized by extreme UV irradiation and very small physical scales (≤0.1 pc), and are embedded in dense molecular clouds with gas densities often higher than 10⁶ cm⁻³ (Hoare et al. 2007). Whereas the H-ionizing radiation is absorbed in the H II region, UV radiation carrying energies less than 13.6 eV penetrates deeper into the molecular cloud, producing a so-called photo-dissociation region (PDR).

* *Herschel* is an ESA space observatory with science instruments provided by European-led Principal Investigator consortia and with important participation from NASA.

** Based on observations carried out with the IRAM 30 m Telescope. IRAM is supported by INSU/CNRS (France), MPG (Germany) and IGN (Spain).

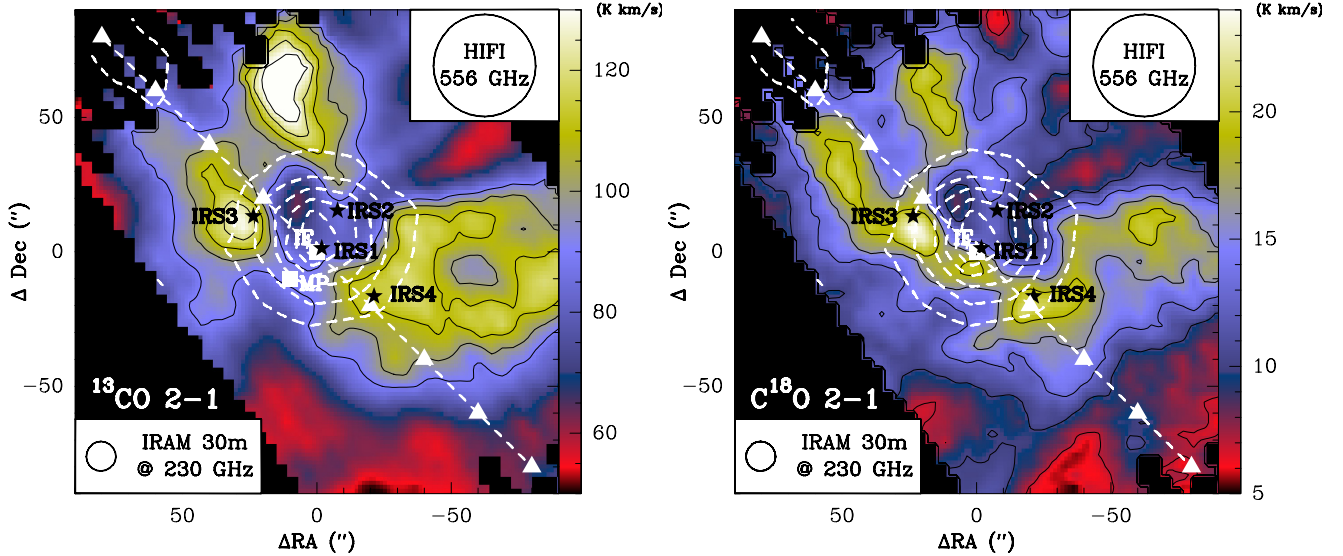


Fig. 1. Maps of the integrated intensity (color scale) between 5 and 15 km s⁻¹ of the ¹³CO (2 → 1, *left*) and ¹⁸O (2 → 1, *right*) lines observed at the IRAM-30 m telescope. Dashed white contours represent the integrated intensity of the H42 α recombination line at 85.688 GHz (1 to 11 K km s⁻¹ in steps of 2 K km s⁻¹), tracing the H II region. Squares represent the positions of the ionization front (IF) and the molecular peak (MP), whereas the triangles represent the points of the observed strip (dashed line) for ¹²CO (9 → 8), H₂O and NH₃ that are studied in this work. The infrared sources are indicated with black stars.

In these regions, the chemistry and the physics are driven by the extreme impinging radiation field (more than 10⁵ times the Habing field G_0 , see [Habing 1968](#)). The study of UC H II regions is crucial to understanding the different processes in massive star formation.

Mon R2 is the UC H II region created by a B0 star ([Downes et al. 1975](#)) within the nearby (830 pc) star-forming region Monoceros. It is the closest UC H II region and, with an angular diameter of $\sim 22''$ (0.1 pc), the only one that can be resolved by single-dish millimeter and far-IR telescopes. The formation of the star associated to the infrared source IRS1 created a huge bipolar outflow ($\sim 15' = 3.6$ pc long, [Massi et al. 1985](#); [Henning et al. 1992](#); [Tafalla et al. 1994](#)), which is now inactive. A compact active bipolar outflow, more likely related to FIRS 3, was observed in the low- J CO ([Giannakopoulou et al. 1997](#)) and methanol ([Xu et al. 2006](#)) lines. The UC H II region has a cometary shape and reaches its maximum continuum brightness toward the infrared source Mon R2 IRS 1. The host molecular cloud has been characterized by many previous millimeter spectroscopic and continuum studies ([Henning et al. 1992](#); [Giannakopoulou et al. 1997](#); [Tafalla et al. 1997](#); [Choi et al. 2000](#); [Rizzo et al. 2003, 2005](#)). The molecular emission shows an arc-like structure surrounding the H II region, with the bulk of the emission to the southwest (see Fig. 1). The UCH II appears to be opened to the north, as shown by the very extended emission of small dust particles at 8 μ m, in a region characterized by a PDR-like chemistry ([Ginard et al. 2012](#)). Depending on the tracer, gas densities n_{H_2} between a few 10⁵ cm⁻³ and $\sim 5 \times 10^6$ cm⁻³ have been determined in the molecular gas, which testifies the presence of large gradients in the gas densities of this region ([Rizzo et al. 2003](#); [Berné et al. 2009](#); [Ginard et al. 2012](#)). Recent high spatial resolution observations in the mid-infrared of the H₂ rotational lines and of UV-excited polycyclic aromatic hydrocarbons (PAHs) have shown the existence of a thin layer of hot ($T_k = 100$ –600 K) and relatively dense molecular gas ($n_{\text{H}_2} \sim 10^5$ cm⁻³, $N(\text{H}_2) \sim 1 \times 10^{21}$ cm⁻²) in between the ionized region and the dense molecular cloud ([Berné et al. 2009](#)). The detection of the reactive ions CO⁺ and HOC⁺ toward FIRS 1

using the IRAM-30 m telescope constitute additional proof for the existence of a high-density PDR ([Rizzo et al. 2003](#)).

Mon R2 has been targeted as part of the *Herschel* guaranteed-time key program “Warm and Dense Interstellar Medium” (WADI, PI: V. Ossenkopf) as prototype of UC H II regions. The first *Herschel* observations of this source were presented by [Fuente et al. \(2010\)](#), who reported the detection of several far-IR/sub-mm lines, including o-H₂O 1_{1,1} → 0_{0,0}, toward the so-called molecular peak (hereafter MP, see Fig. 1). On the basis of these observations they estimated an average water abundance across the PDR of $\sim 2 \times 10^{-8}$ relative to H₂. This value is slightly higher than that obtained by [Snell et al. \(2000\)](#), which was based on lower angular resolution observations of the o-H₂O ground state line with SWAS ($\sim 2 \times 10^{-9}$ relative to H₂).

In this paper we present new *Herschel* observations and complementary mm data obtained at the IRAM-30 m telescope to improve our knowledge of the molecular gas surrounding the H II region, and investigate the origin of the CO, H₂O and NH₃ emission in more details.

2. Observations

Table 1 summarizes the observed transitions with the corresponding frequencies, beam sizes, and beam efficiencies^{1,2}. In this paper, the intensity scale is main beam temperature (T_{mb}), and offsets were calculated relative to the ionization front (hereafter IF: RA_{J2000} = 06^h07^m46.2^s, Dec_{J2000} = -06°23′08.3″).

2.1. *Herschel* observations

The *Herschel* ([Pilbratt et al. 2010](#)) observations presented here were obtained with the heterodyne instrument for the far infrared

¹ http://herchel.esac.esa.int/Docs/TechnicalNotes/HIFI_Beam_Efficiencies_17Nov2010.pdf

² <http://www.iram.es/IRAMES/mainWiki/Iram30mEfficiencies>

Table 1. Summary of HIFI and 30 m observations.

Line	ν [GHz]	HPBM ["]	η^a	Telescope
¹² CO (9 → 8)	1036.912	20.4	0.77	<i>Herschel</i>
¹³ CO (2 → 1)	220.398	10.0	0.67	IRAM
¹³ CO (5 → 4)	550.926	38.5	0.79	<i>Herschel</i>
¹³ CO (10 → 9)	1101.349	19.3	0.77	<i>Herschel</i>
C ¹⁸ O (2 → 1)	219.560	10.0	0.67	IRAM
C ¹⁸ O (5 → 4)	548.830	38.6	0.79	<i>Herschel</i>
o-H ₂ O (1 ₁₀ → 1 ₀₁)	556.936	38.1	0.79	<i>Herschel</i>
p-H ₂ O (1 ₁₁ → 0 ₀₀)	1113.343	19.3	0.77	<i>Herschel</i>
o-H ₂ ¹⁸ O (1 ₁₀ → 1 ₀₁)	547.676	38.0	0.79	<i>Herschel</i>
o-NH ₃ (1 ₀ → 0 ₀)	572.498	37.0	0.79	<i>Herschel</i>
H (42 α)	85.688	29	0.63	IRAM
[C II] (² P _{3/2} → ² P _{1/2})	1900.537	11.2	0.73	<i>Herschel</i>

Notes. ^(a) $\eta_l = B_{\text{eff}}/F_{\text{eff}}$.

HIFI (de Graauw et al. 2010) as part of the WADI guaranteed-time key program (Ossenkopf et al. 2011). A single local oscillator (LO) configuration allowed us to simultaneously observe the o-H₂O (1₁₀ → 1₀₁) and o-NH₃ (1₀ → 0₀) lines. A second setup was dedicated to the observation of the p-H₂O (1₁₁ → 1₀₀) and ¹³CO (10 → 9) lines. A third LO setting allowed us to observe the o-H₂¹⁸O (1₁₀ → 1₀₁) line as well as the ¹³CO (5 → 4) and C¹⁸O (5 → 4) lines. Finally, dedicated setups were used for the ¹²CO (9 → 8) line and the [C II] line. All lines were observed in one strip across the region, oriented 45° (east of north). The [C II], o-H₂O, p-H₂O and ¹²CO strips extend 2' in each direction relative to the IF (see Fig. 1). To achieve a better signal-to-noise ratio (S/N) in the o-H₂¹⁸O (1₁₀ → 1₀₁) line, this strip extended for only ~1' on each side of the IF. The strips were obtained using the on-the-fly (OTF) observing mode using Nyquist sampling and with the reference position at the offset (+10'; 0'), which is free of emission.

The basic data reduction was performed using the standard pipeline provided with the version 7.0 of HIPE³ (Ott 2010) and then exported to GILDAS/CLASS (Pety 2005) for a more detailed analysis. For the ¹³CO (10 → 9) and p-H₂O (1₁₁ → 1₀₀) lines we subtracted a secondary OFF spectrum obtained at a position located at the NE end of the strip that is free of emission. Typical noise rms values are ~20 mK (o-H₂O and o-NH₃), ~0.2 K (¹²CO), ~20 mK (¹³CO 10 → 9 and p-H₂O), 7 mK (o-H₂¹⁸O, ¹³CO 5 → 4 and C¹⁸O 5 → 4) and 1 K ([C II]), all calculated at the resolution of 0.7 km s⁻¹.

Because HIFI is a double-sideband receiver, but all our spectra are calibrated to the single-sideband scale, the continuum levels need to be corrected for the contribution from the image sideband. For all our spectra, we can assume a sideband gain ratio of unity (Roelfsema et al. 2012), so that the continuum level needs to be divided by a factor two. After this correction, the continuum levels toward the IF are 0.25 and 0.5 K at 550 GHz and 1110 GHz, respectively. The [C II] observations showed strong

standing waves, which were removed using the *FitHifiFringe* task within HIPE. These standing waves hinder the determination of the continuum level at these high frequencies.

2.2. IRAM-30 m telescope observations

The observations of the ¹³CO (2 → 1) and C¹⁸O (2 → 1) were performed in February and March 2009 using the HERA 3 × 3 1 mm receiver array at the IRAM-30 m telescope located at Pico de Veleta (Granada, Spain). The observations were performed in OTF mode with the same OFF position as above. The spectrometer was the VESPA autocorrelator, configured to provide a spectral resolution of 40 kHz. Typical noise rms values are 0.2 K for both the ¹³CO and C¹⁸O lines. The integrated intensity maps are shown in Fig. 1. In a different observing run, in July 2009, we observed the H42 α recombination line at 85.688 GHz. The spectrometer was the WILMA autocorrelator, which provides a fixed spectral resolution of 2 MHz, ~7 km s⁻¹ at this frequency. The noise rms value of these observations is ~0.05 K.

3. Results

Figure 1 displays the integrated emission of the ¹³CO and C¹⁸O 2 → 1 lines in a 160'' × 160'' field centered at the IF. The emission of the C¹⁸O 2 → 1 line presents an arclike structure opened to the NW, with several peaks that correspond to regions of enhanced gas density as evidenced by other high-density tracers (Choi et al. 2000; Rizzo et al. 2003). The shape of the integrated intensity of the ¹³CO 2 → 1 line is similar, although the emission is somewhat more extended and less sensitive to individual clumps. Although it shows some symmetry, the gas detected in C¹⁸O shows an elongated structure extending northeast of the IF. The HIFI strips follows this structure so that individual clumps are likely to influence the emission of far-IR lines in this direction rather than toward the SW, where the molecular emission is more compact.

In the same figure, we present the integrated intensity of the H42 α recombination line, which traces the H II region. The large beam (~29'' half-power beam width, HPBW) of the 30 m telescope at this frequency hinders the detection of the small-scale morphology of this UC H II region. The peak intensity of the H42 α line is located ~3'' northwest of the IF and the emission extends in a radius of about 20''. Taking into account the large beam of the 30 m telescope at this frequency and typical pointing errors of 1''–2'', we do not consider that this shift is significant.

3.1. Kinematics

Figure 2 shows the HIFI spectra observed at different offsets along the the strip and Fig. 3 displays their position-velocity (PV) diagrams. Several lines ([C II], ¹²CO 9 → 8, o-H₂O and o-NH₃) are detected across the entire strip up to a distance of ~100''. The intensity and velocity structures show systematic variations along the strip, which can be summarized as follows:

1. The [C II] line is most intense and broader toward the UC H II region, where it covers the velocity range from 0 to 20 km s⁻¹. Outside the UC H II region, the [C II] emission remains detected but in a narrower velocity range, between 7 and 15 km s⁻¹. A probable origin of the high-velocity gas around the UC H II region is a dense PDR layer, accelerated by the radiative pressure from the central source, where carbon is ionized. The extended and narrower emission is likely

³ HIPE is a joint development by the Herschel Science Ground Segment Consortium, consisting of ESA, the NASA Herschel Science Center, and the HIFI, PACS and SPIRE consortia.

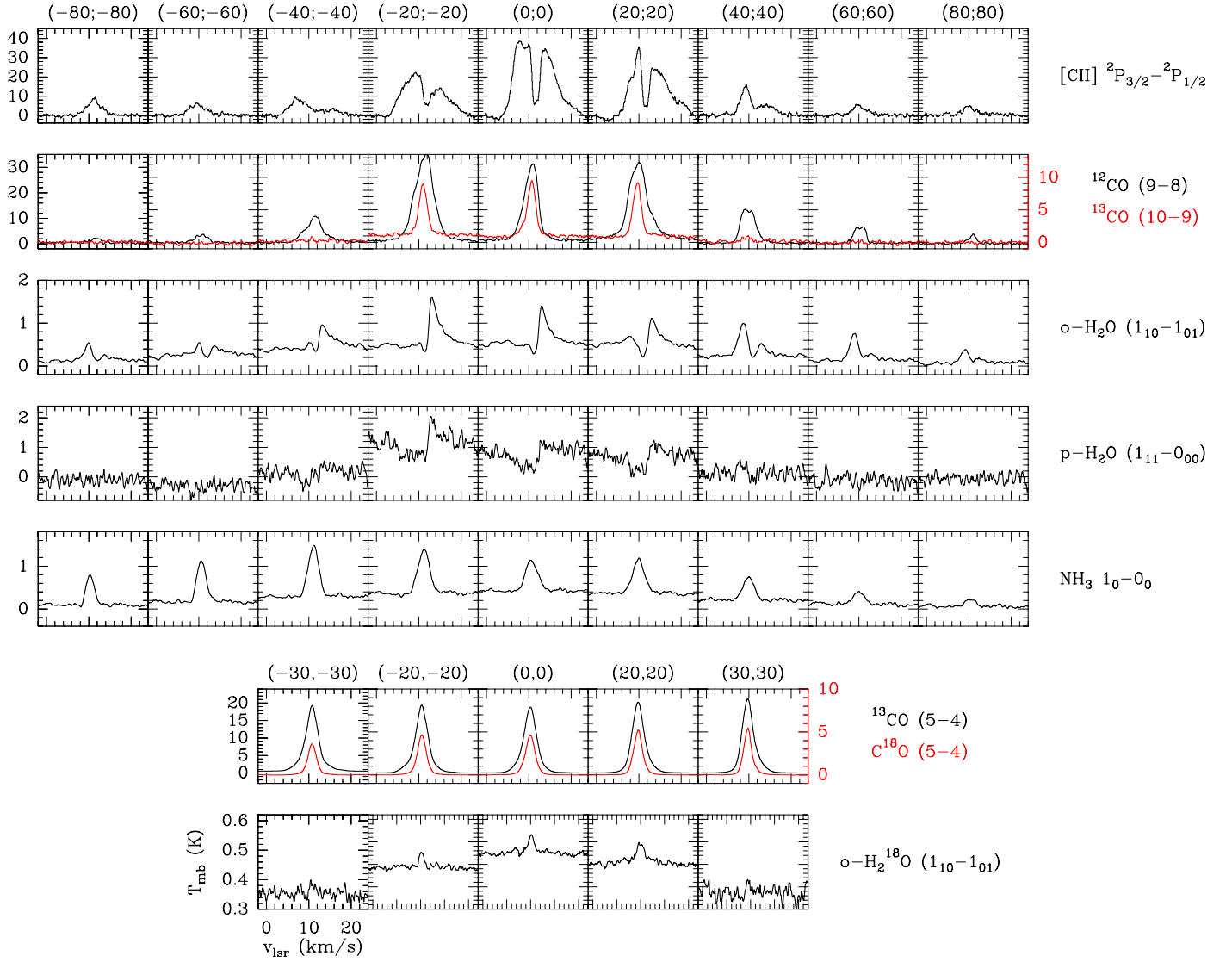


Fig. 2. Raw spectra of the HIFI observations along the cut indicated in Fig. 1. The continuum has not been subtracted so that the offset in the intensity scale represent the observed continuum. This needs to be divided by two because of the double side band observations.

related to the first quiescent layers of the molecular cloud or to layers in the external envelope.

2. The ^{12}CO and $\text{o-H}_2\text{O}$ lines peak toward the UC H II region and high-velocity wings are detected in the direction of the ionized gas. Emission in the line wings is also detected at larger offsets toward the southwest (see offset $[-40'', -40'']$ in Figs. 2 and 3). The origin of this highly accelerated gas is difficult to determine: at small offsets it may be associated to the same expanding layer that emits in $[\text{C II}]$, whereas the wings toward the southwest are more likely related with the molecular outflow mapped by Xu et al. (2006). Yet the outflow may also contribute to the broad emission toward the H II region.
3. The C^{18}O and H_2^{18}O and NH_3 lines have relatively narrow line widths (between 2.5 and 3.1 km s^{-1}) all along the strip. The ^{13}CO , C^{18}O and H_2^{18}O lines peak a few arcsec northeast of the IF, whereas the NH_3 emission presents a dip toward the IF and peaks southwest. This extended emission is consistent with the overall structure of the cloud traced by the ^{13}CO and C^{18}O ($2 \rightarrow 1$) lines, which present an elongated structure in the NE-SW direction. The dip in the

NH_3 emission corresponds to a valley in the molecular bar traced by C^{18}O ($2 \rightarrow 1$).

4. An absorption feature is detected in H_2O at the velocity of the molecular cloud, $\approx 11.5 \text{ km s}^{-1}$, toward the UC H II region, which likely originates in the same quiescent gas that is emitting for instance in NH_3 and C^{18}O . The $[\text{C II}]$ spectra also show a self-absorption feature centered at $\approx 12 \text{ km s}^{-1}$ but its origin is more doubtful. In the other cases we do not detect the self-absorption feature.
5. All CO and NH_3 lines show a systematic shift of their peak velocities, which suggests that the expansion is not isotropic, and/or that a slow rotation ($v_{\text{rot}} \sim 0.5 \text{ km s}^{-1}$, Loren 1977) of the cloud may be ongoing.

Summarizing, these observations suggest that the high-velocity wings are coming from a gas that is pushed away from the H II region. This gas could be associated either to the innermost layers of the expanding PDR, the outflow, or both. On the other hand, the emission and the absorption at central velocities of H_2O and H_2^{18}O , as well as the NH_3 and the low- J ($J_{\text{up}} \leq 5$) CO emission are more likely related to the interface of the PDR with the

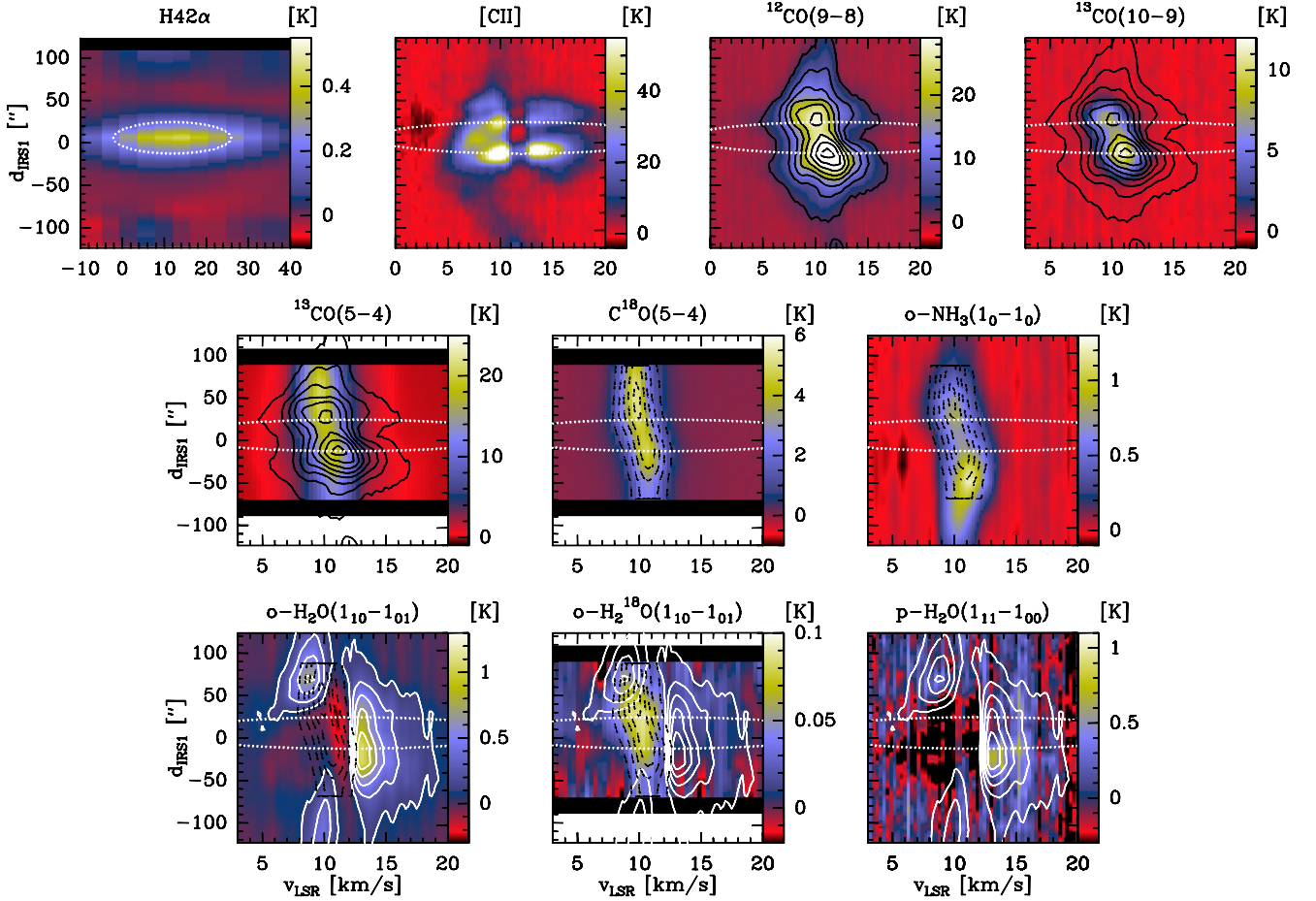


Fig. 3. Position-velocity diagrams along the observed strip (Fig. 1) after continuum subtraction. The origin of the position axis is the IF and the negative direction extend SW of the origin. The dotted white ellipse indicates the size of the H II region. Black solid contours in the CO panels trace the intensity of ¹²CO (9 → 8) emission from 2 to 37 K, in steps of 5 K. Dashed black contours display the intensity of the C¹⁸O (5 → 4) line from 1 to 6 K in linear steps of 1 K. The white solid contours represent the o-H₂O emission from 0.1 to 0.9 K in steps of 0.2 K.

molecular cloud and to the bulk of the molecular cloud, respectively. In the following sections, we model the emission from CO and isotopologues, H₂O and NH₃ with different degrees of approximation to derive the physical conditions at which they arise and derive an estimate of their abundances. The detailed analysis of the [C II] line is postponed for a more detailed study that includes the [¹³C II] observations (Pilleri et al., in prep.).

4. LVG modeling

In this section, we present local radiative transfer calculations to determine the water and ammonia abundance toward Mon R2, by assuming a uniform density and temperature layer. This approach is somewhat simplistic because different phases of gas are mixed along the line of sight, but gives a first rough estimate of the water and ammonia abundance as a function of the physical conditions in the beam.

For the sake of simplicity, we separated the line profiles into three velocity intervals, and analyzed each of them independently. This allowed us to separate the optically thick and self-absorbed part of the line profiles from the optically thin wings. The velocity intervals are defined as follows:

- $\Delta v_b = [4.5\text{--}8.5] \text{ km s}^{-1}$,
- $\Delta v_c = [8.5\text{--}12.5] \text{ km s}^{-1}$,
- $\Delta v_r = [12.3\text{--}20.5] \text{ km s}^{-1}$.

For each of the velocity intervals, we used a large velocity gradients (LVG) code to fit the line intensities and estimate the column densities and abundances of H₂O (MADEX, Cernicharo 2012) and NH₃ (RADEX, van der Tak et al. 2007). Table 2 shows the averaged main beam temperature measured per velocity interval ($\langle T_b \rangle = \frac{1}{\Delta v} \int_{\Delta v} T_{mb} dv$) observed toward the IF. The gas column densities toward the IF were obtained by fitting the intensity of the optically thin C¹⁸O (2 → 1) and (5 → 4) lines as well as their ratio. Gas densities and kinetic temperatures were varied in a reasonable range for this region ($n_{\text{H}_2} = 10^4\text{--}10^7 \text{ cm}^{-3}$, $T_k = 40\text{--}500 \text{ K}$) and the grid was repeated for different values of the beam filling factor and abundance.

4.1. H₂¹⁸O emission

We modeled the intensity of the optically thin line o-H₂¹⁸O (1_{1,0} → 0_{0,1}) to obtain a first estimate of the water abundance in Δv_c . We fit the intensities of the C¹⁸O (5 → 4) and o-H₂¹⁸O (1_{1,0} → 0_{0,1}) lines and their ratio, assuming a standard isotopic ratio ¹⁶O/¹⁸O = 500 and a ¹²CO abundance relative to H₂ of $X(^{12}\text{CO}) = 1 \times 10^{-4}$. We used the new collisional rate coefficients by Daniel et al. (2011) for o-H₂O and Yang et al. (2010) for CO. We also assumed an H₂ ortho-to-para ratio (OTP) of 3. Since the collisional coefficients of H₂O with ortho- and para-H₂ species are asymmetric, the results depend on the assumed

Table 2. Mean intensities ($\langle T_{mb} \rangle$) and LVG results for CO, H₂O and NH₃ toward the IF after smoothing the observations to a 38'' spatial resolution.

	Units	Δv_b [4.5–8.5] km s ⁻¹	Δv_c [8.5–12.5] km s ⁻¹	Δv_r [12.5–20.5] km s ⁻¹
C ¹⁸ O (2 → 1)	[K]	0.58	2.93	0.093
C ¹⁸ O (5 → 4)	[K]	0.29	2.93	0.08
$R_{5/2}^{18}$		2	1	0.86
$N(\text{C}^{18}\text{O})/\Delta v$	[cm ⁻²]	3×10^{14}	2×10^{15}	1×10^{14}
o-H ₂ ¹⁸ O (1 ₁₀ → 1 ₀₁)	[K]	<0.01	0.052	<0.01
$R_{\text{H}_2^{18}\text{O}/\text{C}^{18}\text{O}}$		–	0.018	–
$X(\text{o-H}_2^{18}\text{O}) \times 500$		–	[10 ⁻⁸ –10 ⁻⁷]	–
¹² CO (9 → 8)	[K]	5.11	24.86	2.83
o-H ₂ O (1 ₁₀ → 1 ₀₁)	[K]	0.08 ^a	–0.13 ^a	0.59
$R_{\text{H}_2\text{O}/^{12}\text{CO}}$		–	–	0.21
$X(\text{o-H}_2\text{O})$		–	–	[10 ⁻⁸ –10 ⁻⁶]
o-NH ₃ (1 ₀ → 0 ₀)	[K]	<0.01	0.52	<0.04
$R_{\text{o-NH}_3/\text{C}^{18}\text{O}}$		–	0.18	–
$X(\text{NH}_3)$		–	[10 ⁻⁹ –10 ⁻⁸]	–

Notes. ^(a) Self-absorbed profile.

OTP ratio. In particular, assuming a lower OTP ratio would result in the need of higher densities to excite H₂O.

Figure 4 shows the results of the LVG modeling. The intensities of the lines and their ratio can be reproduced reasonably well assuming a beam filling factor (η_{ff}) of 0.1 or lower. Several solutions can be found with this η_{ff} , corresponding to different density-abundance pairs. The line intensities can be fitted with several combination of these two parameters, which reflects a degeneracy between the gas density and the water abundance. Considering the range of densities that are expected to be found in Mon R2, the solutions correspond to a water abundance between 10⁻⁷ and 10⁻⁸ relative to H₂. The highest value is obtained if the emission arises from relatively low-density gas ($n_{\text{H}_2} \sim$ a few 10⁴ cm⁻³), whereas the lowest abundance corresponds to gas densities of 10⁶ cm⁻³.

4.2. H₂O emission

Because the H₂O lines are heavily self-absorbed at central velocities, we concentrated our LVG analysis on the emission in the red wings, in the velocity interval Δv_r . Emission from ¹²CO (9–8) and o-H₂O (1_{1,0} → 0_{0,1}) is expected to arise in similar physical conditions, because both lines need relatively high temperatures and densities to be excited. We modeled the intensity of the o-H₂O emission and the ratio $R_{\text{H}_2\text{O}/^{12}\text{CO}} = I(\text{o-H}_2\text{O } 1_{1,0} \rightarrow 0_{0,1})/I(^{12}\text{CO } 9 \rightarrow 8)$ to derive the water abundance in the line wings.

Assuming a beam filling factor $\eta_{\text{ff}} = 1$, which would imply an angular extension of the region emitting in the red wings of ~38'', we only found solutions for o-H₂O abundances between 10⁻⁸ and 10⁻⁷ relative to H₂. The highest water abundance corresponds to a molecular hydrogen density of $\sim 5 \times 10^5$ cm⁻³ and gas kinetic temperature of about 70 K. For an abundance $\sim 10^{-8}$, densities of several $\sim 10^5$ cm⁻³ and temperatures ~ 50 K are needed to reproduce the measured line intensities. Since both set of values are within the range of physical conditions that we can accept for this region, we cannot easily distinguish between them.

To assume a beam filling factor of 1, however, is a limiting case, since the high-velocity wings are concentrated in the

PDR around the UC H II region. A beam filling factor $\eta_{\text{ff}} = 0.1$ would correspond to the case of an emission ring extending only in the plane of the sky with a thickness of ~2'' and a diameter of 20'', which is consistent with the size of the PDR traced by PAH emission around this region (Berné et al. 2009). Assuming these lower values of η_{ff} , we found a water abundance $X(\text{o-H}_2\text{O})$ in the range [10⁻⁸–10⁻⁶] for reasonable physical conditions in this region (n_{H_2} of several 10⁴–10⁶ cm⁻³ and T_k between 50 and 100 K). These values of molecular hydrogen density are consistent with the physical conditions derived by Berné et al. (2009) on the basis of the purely rotational lines of H₂ that trace the PDR. This supports the scenario of an expanding PDR in which the highest velocities are associated to the molecular gas closer to the UC H II regions, i.e., the warm HI/H₂ layer traced by the PAHs and the H₂ rotational lines. However, the possible contribution of an outflow component cannot be discarded, especially to the southwest, where the outflow detected by Xu et al. (2006) has its maximum emission.

4.3. NH₃

We used the same approach to estimate the o-NH₃ abundance in Δv_c . The profiles of the o-NH₃ lines are not self-absorbed, and can be used to obtain a direct estimate of the column density of this species for all velocity intervals. In contrast to water, the $R_{\text{NH}_3/^{12}\text{CO}} = I(\text{NH}_3 1_0 \rightarrow 0_0)/I(^{12}\text{CO } 9 \rightarrow 8)$ ratio decreases at higher velocities, corroborating our interpretation that the NH₃ emission does not come from the innermost part of the PDR, but from the bulk of the molecular cloud.

We have fitted the intensity of the o-NH₃ line and its ratio to the C¹⁸O (5 → 4) line using the collisional rate coefficients from Danby et al. (1988). The results for Δv_c are reported in Fig. 4. Assuming a beam filling factor of ~1, consistent with the large extension observed with HIFI, our data are reasonably well reproduced with a density of $\sim 10^4$ –10⁵ cm⁻³, a gas kinetic temperature of ~ 50 K and an ammonia abundance $\sim 10^{-8}$ –10⁻⁹. The opacity of the o-NH₃ line are of the order of $\tau \sim 10$, so the lines are very optically thick. Lower values of the NH₃ abundances are associated to higher densities that have no evidence in MonR2.

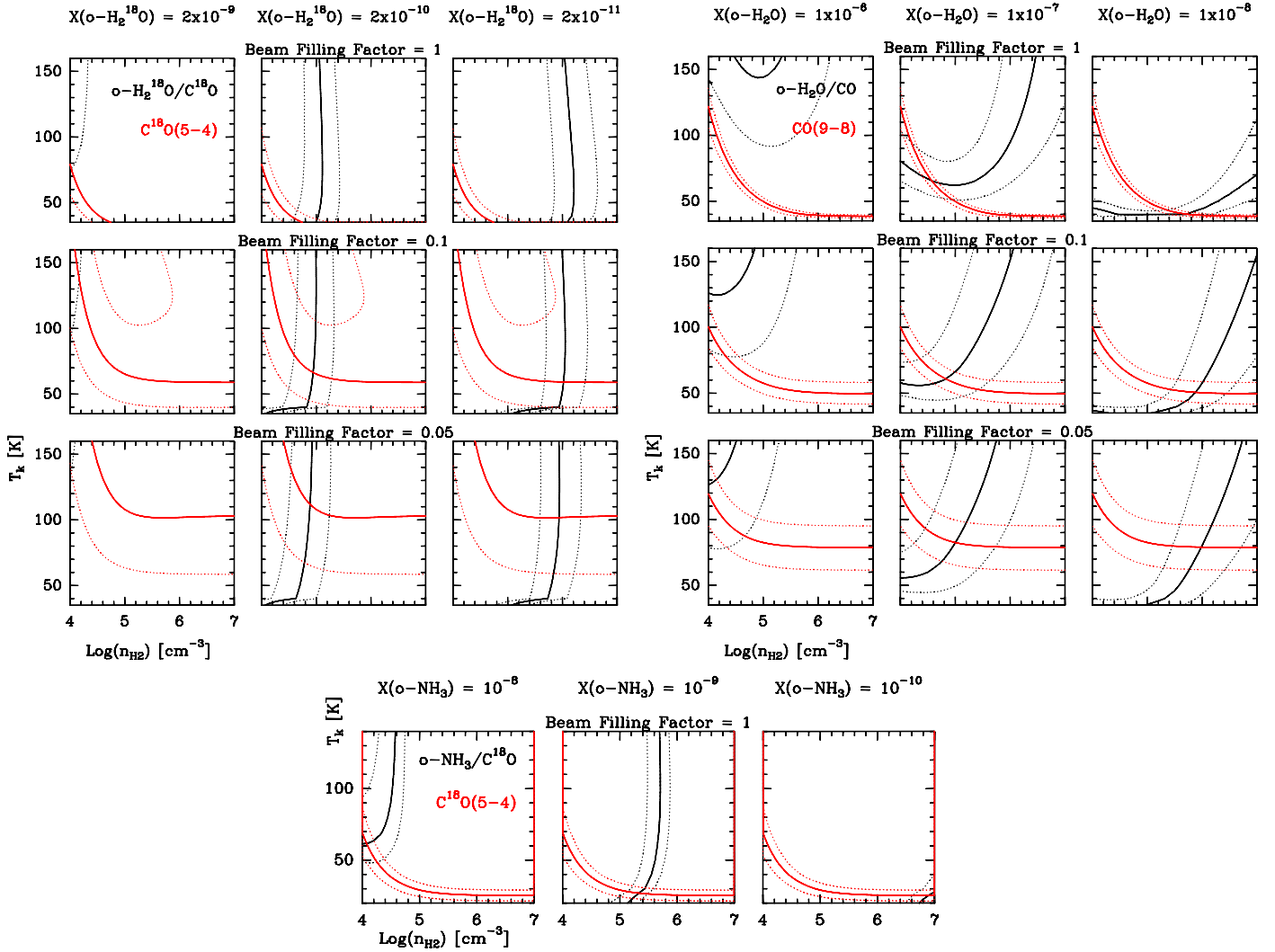


Fig. 4. *Upper left:* 1D modeling of the intensity of C¹⁸O(5–4) (red solid line) and of the ratio o-H₂¹⁸O/CO(9–8) (black line) in the velocity interval Δv_c . The intensities are calculated as a function of the kinetic temperature and the local density, assuming different abundances of o-H₂O and beam filling factors. The uncertainties (30% in the absolute intensity and a factor of 2 for the line ratios) are represented with dotted lines. *Upper right:* the corresponding results for ¹²CO(9–8) (red solid line) and o-H₂O/¹²CO in the velocity interval Δv_r . *Bottom:* results for the o-NH₃ observations in the velocity interval Δv_c . No solutions are found for a lower beam filling factor.

5. A simple spherical model of MonR2

In this section, we test a simple geometrical model of the region to reproduce the observed line profiles. The model assumes an expanding spherical structure composed of concentric layers with given physical conditions (gas temperature and local density), kinematical information (turbulent and expansion velocities), and molecular abundances. We note in advance that with such a simple, spherically symmetric model is impossible to account for all asymmetries in the velocity structure of the observations, which may reflect large-scale structures such as the outflow, small-scale inhomogeneities (clumpiness) and other kinematical effects such as rotation. Yet, we propose it as a useful step toward a better understanding of this region.

In a first step, we fit the CO observations to fine-tune the physical structure of the molecular cloud and its associated PDR. This structure is then used to fit the H₂O observations by varying their abundance profiles across the cloud. To keep the model as simple as possible, we assume a double step-function abundance profile. For NH₃, our observations consist of a single, optically

thick line that does not provide a reliable probe of the detailed spatial distribution of the o-NH₃ abundance, and we therefore exclude this molecule from this toy model.

5.1. The physical structure

The physical structure (in terms of the length of each layer, their density and temperature) is derived based on previous observational data and modeling (Berné et al. 2009; Fuente et al. 2010). A first estimate of the gas temperature was obtained using an updated version (1.4.3) of the Meudon PDR code⁴ (Le Petit et al. 2006; Goicoechea & Le Bourlot 2007; Gonzalez García et al. 2008; Le Bourlot et al. 2012, cf. also Sect. 6.2 and Table 3).

The density structure in Mon R2 can be assumed to be similar to other PDRs associated to star-forming regions, such as NGC 7023 and the Orion Bar (Joblin et al., in prep.). The first layer ($\sim 1\text{--}2\text{ A}_V$) of the PDR is where most of the [C II] and PAH emission originates from (Habart et al. 2003; Joblin et al.

⁴ <http://pdr.obspm.fr/PDRcode.html>

2010; Pilleri et al. 2012). This is generally followed by a high-density layer (or “filament”) with $n_{\text{H}_2} \gtrsim 10^5 \text{ cm}^{-3}$, which can be several magnitudes thick and is responsible for the emission in the high- J rotational lines of CO. Finally, the bulk of the molecular cloud is usually at a lower density, and accounts for the emission of molecular tracers that are easily photo-dissociated. In our model, the outermost layer (3 mag thick) is heated from the outside, in agreement with the large large-scale PAH emission detected at $8 \mu\text{m}$, which testifies to the presence of an external source of heating, especially to the north of the H II region (Ginard et al. 2012).

In our spherical model, the central core of the “onion” is represented by an H II region with a very low density that is free of molecular gas. The H II region is surrounded by a warm and relatively low-density expanding layer (L_{PDR}). For this layer we adopted the density derived by Berné et al. (2009) from the H_2 rotational lines. The next layer is the high-density layer, L_{HD} ($n_{\text{H}_2} \sim 3 \times 10^6 \text{ cm}^{-3}$). L_{HD} extends for a few 0.001 pc ($\sim 10 \text{ mag}$) and is required to explain the emission of large dipole molecular tracers such as CS, c- C_3H_2 and HCO^+ (Ginard et al. 2012). Finally, everything is surrounded by a lower-density envelope, L_{env} (Fuente et al. 2010). The inner radius of the PDR, $r_{\text{H II}} = 0.08 \text{ pc}$ ($\sim 20''$), is determined by the angular size of the H II region, and the outer radius of the envelope, $r_{\text{out}} = 0.34 \text{ pc}$, is fixed on basis of the extension of the $^{13}\text{CO } 2 \rightarrow 1$ and $\text{C}^{18}\text{O } 2 \rightarrow 1$ line emissions (Fig. 1). The values of r_{PDR} and r_{HD} are tuned to fit the CO (and isotopologues) lines. Summarizing:

$$n_{\text{H}_2}(r) = \begin{cases} 2 \times 10^5 \text{ cm}^{-3} & \text{if } r_{\text{H II}} < r < r_{\text{PDR}} \rightarrow L_{\text{PDR}} \\ 3 \times 10^6 \text{ cm}^{-3} & \text{if } r_{\text{PDR}} < r < r_{\text{HD}} \rightarrow L_{\text{HD}} \\ 5 \times 10^4 \text{ cm}^{-3} & \text{if } r_{\text{HD}} < r < r_{\text{out}} \rightarrow L_{\text{env}}. \end{cases}$$

For the kinematics, we adopted the expansion velocity law

$$V_{\text{exp}}(r) = V_{\text{out}} \times (r_{\text{out}}/r), \quad (1)$$

in which r is the radial distance from the center of the sphere and V_{out} is the expansion velocity at r_{out} . This law mimics the expansion velocity profiles commonly used to model H II regions, with the surrounding envelope expanding at a lower velocity compared to the PDR and the H II region (Lebrón et al. 2001).

Finally, we included a continuum source in our model to reproduce the fluxes measured with *Herschel*. The continuum fluxes toward the IF are well reproduced by a modified black body at the temperature of 500 K with an opacity of 0.1 at $50 \mu\text{m}$, an exponent for the opacity law of 1 and a radius of 0.03 pc. This enables one to adequately fit the continuum levels toward the IF, but underestimates it at larger offsets. The presence of other continuum sources in the background might help to reproduce the continuum levels at large distance from the IF, but these are not included in our model for simplicity.

5.2. CO lines

We used our non-local radiative transfer code (Cernicharo et al. 2006b) to fit the line profiles at various offsets along the HIFI stripes. We adopted a standard ^{12}CO abundance relative to H_2 of 10^{-4} and the isotopic abundance ratios of $^{12}\text{C}/^{13}\text{C} = 50$ and $^{16}\text{O}/^{18}\text{O} = 500$.

Assuming the density structure described above and the gas kinetic temperature derived with the Meudon PDR code, we fine-tuned the values of r_{PDR} and r_{HD} and the kinematical parameters to best reproduce the CO observations. The integrated intensities are well-fitted with r_{PDR} and r_{HD} being 0.082 pc and 0.083 pc, respectively. To improve the fit of the CO lines, the

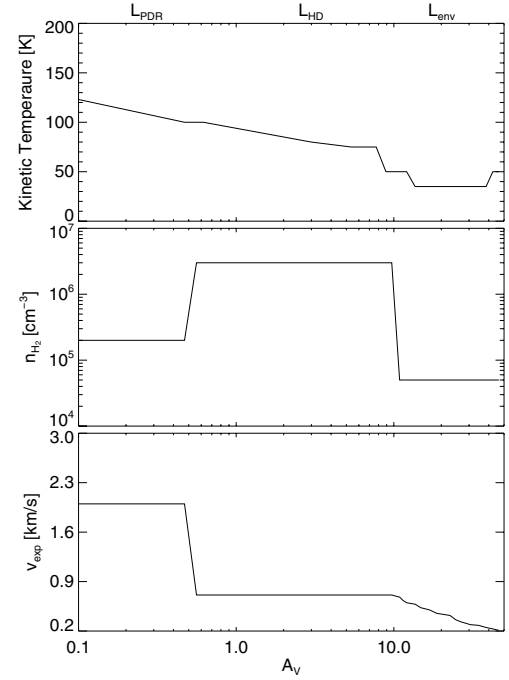


Fig. 5. Summary of the physical and velocity structure used in the non-local radiative transfer model. Values for $A_V \leq 0.1$ are constant.

mean kinetic temperature of the outermost 3 mag of the cloud is set to 50 K, which corresponds to an external radiation field of $G_0^{\text{ext}} \sim \text{a few } 100$. This value is consistent with an extended PDR at a distance of $\sim 100''$, which is illuminated by the UV field produced by IRS1.

The best fit to the line profiles was obtained using the velocity law of Eq. (1) with $V_{\text{out}} = 0.125 \text{ km s}^{-1}$. We have also varied the turbulent velocities to improve the fit of the wings of the ^{12}CO lines. The best solution is found with a turbulent velocity of 1 km s^{-1} in L_{HD} and 1.5 km s^{-1} in L_{env} . To reproduce the high-velocity wings, we fixed the expansion and turbulent velocity in L_{PDR} to 2 km s^{-1} and 5 km s^{-1} , respectively. We stress that because the model has so many parameters, other solutions may be found that reproduce the CO emission well, especially in the wings. Higher resolution observations will be very useful to improve our knowledge of the structure of this region. Figure 5 shows a summary of the physical structure and the velocity profile across the PDR.

Figure 6 displays the model results and the comparison with the observations. Although the overall quality of the low- J lines is very good, there are some discrepancies. The model falls short of the high- J ($J_{\text{up}} > 9$) CO lines at offsets $[-20'', -20'']$ to $[+20'', +20'']$. This is not unusual in PDR, because current PDR models fail to reproduce the intensity of the high- J lines of CO. There are various effects that can be invoked to explain this missing intensity, i.e. clumpiness and an erroneous description of the microphysics of PDRs, which may influence the heating and the chemistry of PDRs (Joblin et al., in prep.). The presence of a high-velocity outflow, or the inclusion of rotation may all be possible ways to improve the fit. However, this accurate level of modeling is beyond the scope of this paper.

5.3. H_2^{18}O and H_2O

We used the physical and kinematical structure derived above to constrain the abundance of water in each layer of the cloud. We

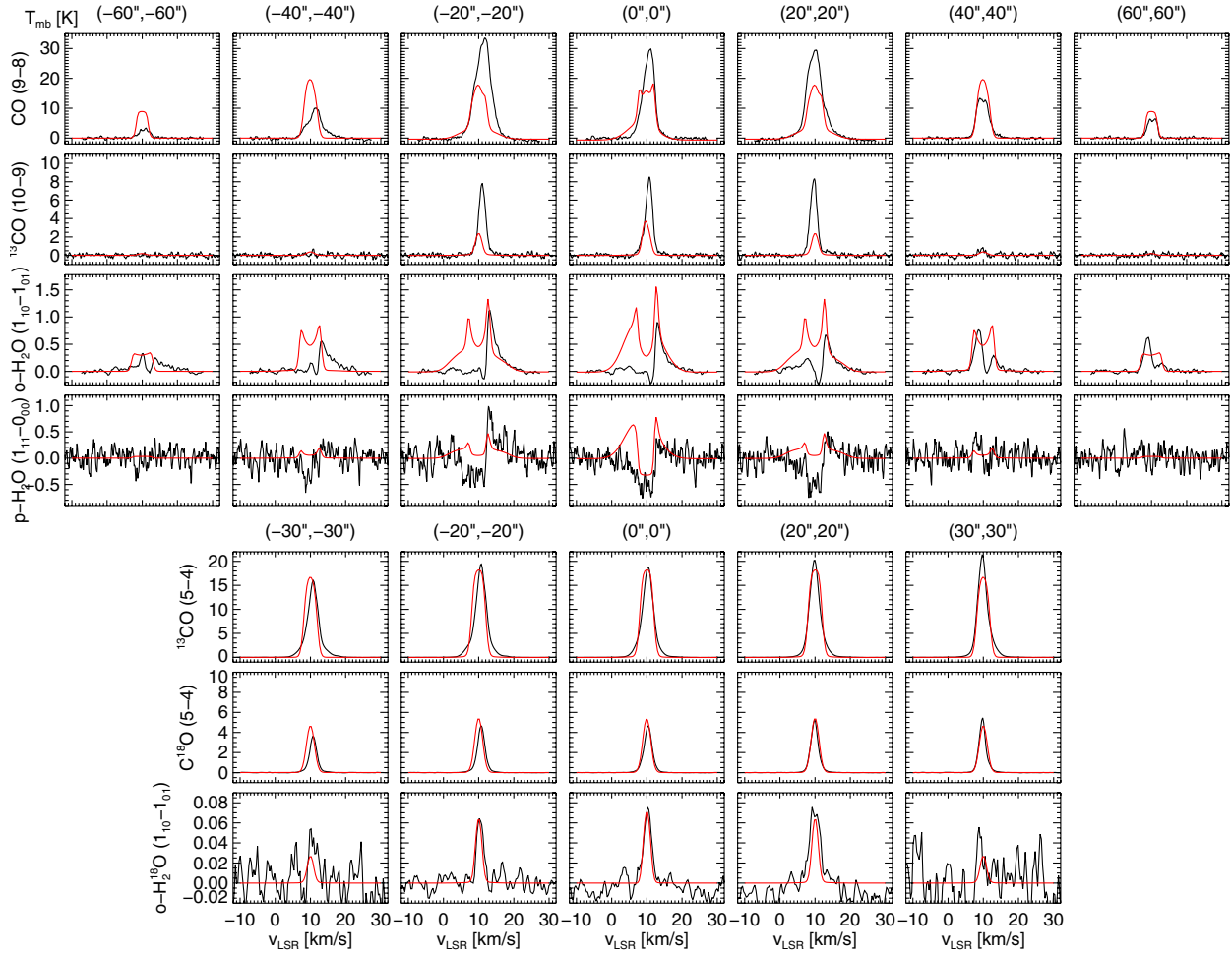


Fig. 6. Comparison of the continuum-subtracted HIFI spectra (black) and the results of the non-local radiative transfer modeling (red) assuming a spherical symmetry for Mon R2.

assumed an abundance profile defined as a double step-function and the standard ortho-to-para ratio of 3. We varied the abundances in the three regions to reproduce the line profiles of all H₂O lines.

The emission of H₂¹⁸O is optically thin and does not present significant emission in the wings, and therefore its intensity is influenced mainly by the low-velocity layers L_{HD} and L_{env} . We were able to reproduce the intensity and profile of this transition at all offsets by assuming an abundance $X(\text{o-H}_2\text{O}) = 3 \times 10^{-8}$ in L_{HD} and 1×10^{-8} in L_{env} . These values are consistent with the results of the local LVG modeling assuming a beam filling factor ≤ 0.1 and with the previous estimate reported in Fuente et al. (2010). With the assumed physical structure, small variations of the water abundances (more than a factor of 2) from these values do not allow one to fit the observed intensities and spatial distribution. However, the main source of uncertainty is the assumed values for n_{H} and T_{kin} . Considering the range of physical conditions that is observed in Mon R2, we can estimate our final error bars in the water abundances to be of one order of magnitude.

With the same velocity profile, we tried to reproduce both the *ortho*- and *para*-H₂O lines at all offsets (see Fig. 6). However, both lines are very optically thick and variations in the morphology and kinematics of the cloud can strongly modify the line profiles. Therefore, we concentrated our efforts on the modeling of the red wings only, which are optically thin and therefore less sensible to small variations of the detailed velocity structure. To reproduce the line wings, we varied the abundance of

H₂O in the layer L_{PDR} . Our best fit is obtained with an abundance of $X(\text{o-H}_2\text{O}) = 1 \times 10^{-7}$ in this layer, consistent with the results of the LVG modeling assuming a density of a few 10^4 and high kinetic temperature (between 50 and 150 K). Similarly to H₂¹⁸O, the main source of uncertainty for H₂O are the model parameters. However, the physical conditions in this layer are relatively well constrained (Berné et al. 2009) and the corresponding water abundances are in the range $[10^{-7}-10^{-6}]$ relative to H₂. As mentioned above, the complete velocity profile of the main isotopologues is very dependent on the assumed kinematics and abundance. Therefore, it is difficult to obtain a very good fit of all spectra with a very simple model like ours. There are a few discrepancies between the observed H₂O profiles and the model. The observations are not symmetric between positive and negative offsets, and there is often an excess emission in the blue wings. These differences are most likely due to the unrealistic assumption that our cloud is perfectly spherical and symmetric under any point of view. The PV diagram of [C II] clearly shows that the kinematical pattern is not symmetric. The wings are wider at red velocities, probably because of the cometary shape of the nebula. In our model, we have used the red wings as the basis for our expansion pattern which is very likely incorrect for the blue part.

Summarizing, we derived a relatively constant $(1-3 \times 10^{-8})$ abundance of water in the high-density region and in the envelope, and a larger abundance (1×10^{-7}) in the high-velocity gas. With these abundances, we obtained very good fits to all

three water lines at the same time. With the assumed physical structure, the abundances are relatively well constrained (within a factor of 2), since small variations of the water abundance have a strong impact on all the lines. Larger variations from these values do not enable one to reproduce all the lines at the same time. However, since the density and velocity structure are not very well constrained and because of the degeneracy between density and abundance, we speculate that a reasonable uncertainty on the water abundance is one order of magnitude.

6. Discussion

6.1. H_2O abundances in MonR2 and the ISM

The results of the previous sections on the water abundance can be summarized as follows. In the gas at low velocities, the abundance of water is \sim a few 10^{-8} relative to H_2 . The spatial distribution and the radiative transfer analysis of the $H_2^{18}O$ line suggests that the low-velocity water emission arises in a region of enhanced density and relatively small volume centered toward the IF. This corresponds to the physical conditions of the high-density PDR proposed by [Rizzo et al. \(2003\)](#).

In the high-velocity gas, the abundance seems to be about an order of magnitude higher and the origin of the wing emission is more doubtful. In our simplistic “onion” model of Mon R2, both the red emission and blue absorption are due to the expanding gas associated with the PDR surrounding the H II region ([Rizzo et al. 2005](#); [Fuente et al. 2010](#)). In this scenario, the emission in the red wing of the o- H_2O line would be related to the PDR around the UC H II region. This is consistent with the high-velocity wings observed in typical PDR tracers such as c- C_3H_2 and the small linewidth of shock tracers such as SiO ([Rizzo et al. 2003](#)). However, our simple model cannot reproduce the detailed spectral profiles of the H_2O lines. In particular, our model overestimates the blue-shifted emission at every position in the strip and it cannot reproduce the red wings at the offsets ($-40''$, $-40''$) and ($-60''$, $-60''$) (see Fig. 6). An asymmetric expanding PDR, and the contribution of the molecular outflow to the water line profiles are very likely the cause of this discrepancy.

The values derived in this work for the water abundances are similar to those commonly found in massive star-forming regions, and somewhat lower than those usually found in outflows and hot cores. In early-stage massive star-forming regions such as W3 IRS5, the abundance of water has been shown to vary between 10^{-9} in the outer and cold envelope and 10^{-4} in the inner hot cores ([Chavarría et al. 2010](#)). Concerning lower mass star-forming regions, [Lefloch et al. \(2010\)](#) studied the water emission in the bipolar outflow of L1157, determining a water abundance varying between few 10^{-7} in the warm and dense ($n > 10^5 \text{ cm}^{-3}$, $T_K \sim 100 \text{ K}$) extended part of the outflow and few 10^{-5} in the high-velocity hot component ($T_K > 100 \text{ K}$) that arises from the bow shock. [Kristensen et al. \(2010, 2011\)](#) derived similar abundances in the early stages of low-mass star-forming regions.

In agreement with previous estimates of the water abundance toward Orion KL based on the IRAM-30 m telescope ([Cernicharo et al. 1994](#)) and ISO data ([Cernicharo et al. 2006a](#)), most recent observations with *Herschel* ([Melnick et al. 2010](#)) have derived a water abundance of $\sim 10^{-5}$ in the outflow, much higher than that derived in this work. Using spatially resolved PACS observations, [Habart et al. \(2010\)](#) derived an upper limit to the water abundance in the Orion Bar of a few 10^{-7} . This value is very consistent with our results. Still unpublished data from the WADI consortium show that water is detected also in PDRs not associated with outflows, such as NGC 7023, Ced 201

Table 3. Input parameters for the Meudon PDR code.

Parameter		Value
G_0	radiation field intensity	5×10^5
G_0^{ext}	external radiation field intensity	100
A_V	total cloud depth	50 mag
	extinction curve	standard galactic
R_V	A_V/E_{B-V}	3.1
ζ	cosmic ray ionization rate	$5 \times 10^{-17} \text{ s}^{-1}$
a_{min}	dust minimum radius	$3 \times 10^{-7} \text{ cm}$
a_{max}	dust maximum radius	$3 \times 10^{-5} \text{ cm}$
α	MRN dust size distribution index	3.5
He/H	Helium abundance	0.1
O/H	Oxygen abundance	3.2×10^{-4}
C/H	Carbon abundance	1.3×10^{-4}
N/H	Nitrogen abundance	7.5×10^{-5}
S/H	Sulfur abundance	1.8×10^{-5}

and the Horsehead nebula (Teyssier et al., in prep.). The water abundance derived in the Horsehead nebula seems to be much lower than that in MonR2, most likely because the dust temperature is very low ($\sim 30 \text{ K}$), and sticking on grains is more efficient. Interestingly, in the PDR associated to the proto-planetary disk TW Hydra, [Hogerheijde et al. \(2011\)](#) derived an upper limit to the abundance of water of $0.5\text{--}2 \times 10^{-7}$, which is consistent with the values detected in the PDR of Mon R2.

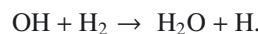
Summarizing, the abundances measured in Mon R2 are lower than those obtained in shocked regions, similar to those observed in the outer layers of pre-stellar cores and the envelopes of young stellar objects, and consistent with the upper limit derived toward the Orion Bar.

6.2. Comparison with gas-phase PDR chemical models

It is interesting to compare our observational results with the predictions of the Meudon PDR chemical model to understand where gas-phase chemistry is sufficient to explain the observed water abundances, and where gas-grain chemistry needs to be taken into account. The input parameters to the code are reported in Table 3. We have tested the impact of using different extinction curves (a standard galactic and the Orion Bar’s) as well as varying the cosmic ray ionization rate. We did not find significant differences in the predicted water abundances in the gas phase.

The water abundance predicted by the Meudon PDR code (middle panel in Fig. 7) shows significant variations with A_V . Following a very low abundance in the most exposed layers ($A_V \lesssim 1$), the code predicts a water abundance of $X[H_2O] \sim 10^{-7}\text{--}10^{-5}$ in a compact layer of about 1 mag. Subsequently, the water abundance strongly dips to 10^{-11} in the high-density layer at about ~ 5 mag, and increases again and reaches its maximum value of $\sim 10^{-6}$ for $A_V \gtrsim 10$.

Our results show that the o- H_2O abundance is $\sim 10^{-7}$ in the first layers of the PDR (L_{PDR}). This is consistent with the value predicted by the Meudon code under the assumption that the outflow has only a minor contribution to the wing emission at central positions. In this layer, water is formed in gas phase via



This reaction has a high activation barrier ($\sim 4000 \text{ K}$) and is significant only at $T_K \gtrsim 250 \text{ K}$. The internal energy available in vibrationally excited H_2 can help to overcome this barrier

(Agúndez et al. 2010). Photodissociation is the main destruction mechanism.

In the rest of the cloud, the gas-phase predictions and the observational results do not agree. In the high-density region, the predicted water abundance is lower than 10^{-10} , whereas the H₂O measurements point to a relatively high abundance of $\sim 10^{-8}$. An additional water supply mechanism, such as desorption (photo-desorption, mechanical sputtering, thermal desorption) from the grain mantles, is required. In contrast, the measured H₂O abundance in the envelope is at least two orders of magnitude lower than the abundances derived by the chemical model. The freeze-out of water onto grain mantles is very likely an efficient gas-phase water destruction mechanism in this colder region. Although it is difficult to compare these results without a precise profile for the water abundance, these results clearly show that gas-phase chemistry is not sufficient to account for the water emission in this PDR.

We have also compared our results with the predictions from the PDR model of Hollenbach et al. (2009), which includes freeze-out and photo-desorption processes but does not consider turbulence. Our observational value of the water abundance in the envelope (1×10^{-8}) is consistent with the model predictions assuming a typical photo-desorption yield $Y_{\text{H}_2\text{O}} = 1 \times 10^{-3}$ and a grain cross sectional area $\sigma_{\text{H}} = 2 \times 10^{-21} \text{ cm}^{-2}$. Indeed, the Hollenbach et al. (2009) model predicts that freeze-out and photo-desorption are the dominant processes to explain the water abundance starting at $A_V \gtrsim 5$ for the physical conditions of the Mon R2 envelope.

Summarizing, our observational results agree well with gas-phase chemical models only in the very first layers of the PDR, $A_V \lesssim 1$, where high-temperature chemistry dominates the formation and photo-dissociation is the main destruction mechanism. The water abundance in the high-velocity gas is consistent with pure gas-phase chemistry, characteristic for PDRs. In the more quiescent gas, desorption from grains must play a role. This could be provided by photo-desorption according to the PDR model of Hollenbach et al. (2009), by turbulence, or by grain destruction in shocks. Deeper into the cloud, freeze-out into grains needs also to be taken into account for taking out H₂O molecules from the gas phase. A complete treatment of the gas-grain chemistry is required to explain the observational results.

6.3. Ammonia abundances

Figure 7 shows the predicted abundance for NH₃ as a function of the distance from the cloud center: qualitatively, ammonia is expected to be highly abundant only in the more shielded part of the envelope. This is consistent with our observational results, which show that emission of o-NH₃ is very extended, peaks outside the H II region and does not present high-velocity wings. This is also consistent with the results of the LVG modeling presented in Sect. 3, which were obtained with a beam filling factor of 1, densities between $5 \times 10^4 \text{ cm}^{-3}$ and $1 \times 10^5 \text{ cm}^{-3}$ and temperatures of $\sim 50 \text{ K}$. Lower densities would result in higher NH₃ abundances. Comparing the abundances in the envelope obtained with the LVG modeling (few 10^{-9} for $n_{\text{H}_2} = 5 \times 10^4 \text{ cm}^{-3}$) and with the Meudon PDR code (10^{-8}), it seems that gas-phase chemistry slightly over-predicts the observed values, although for less than an order of magnitude.

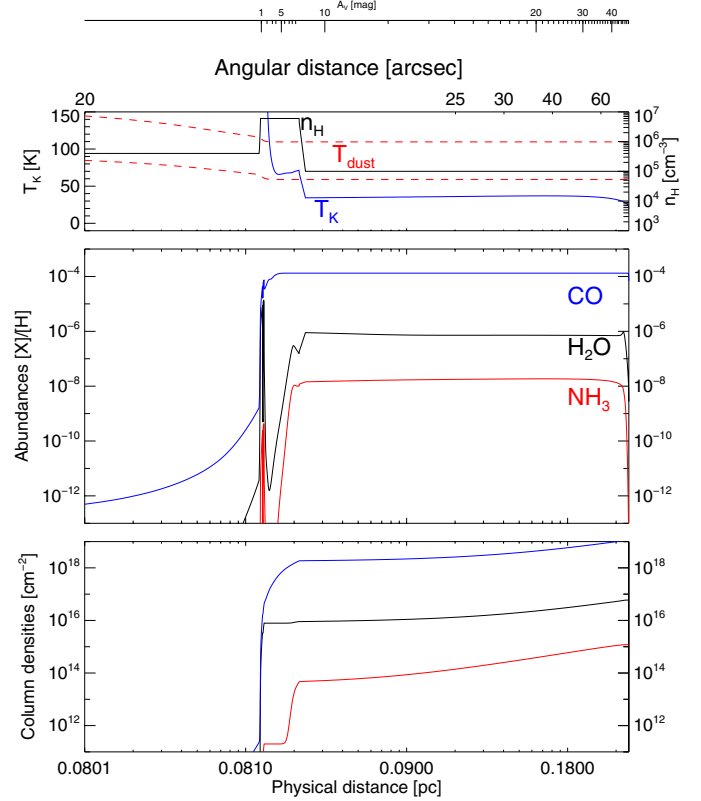


Fig. 7. Results of the modeling of MonR2 with the Meudon PDR code. The angular and physical distances refer to the projected distances from the IF in the plane of the sky. The two curves for the dust temperature are for grains of radius 3.6×10^{-7} and $3.6 \times 10^{-5} \text{ cm}$.

7. Summary and conclusions

In this work, we have presented spatially and spectrally resolved observations of [C II], CO, o-H₂O, p-H₂O and NH₃ along a strip crossing the PDR that surrounds the UCH II region MonR2. Using a local and non-local radiative transfer model and assuming a spherical approximation for the whole cloud, we have fitted the line profiles and intensities of the CO, H₂O and NH₃ lines observed with *Herschel*.

The o-H₂O line has a narrow profile that peaks at $\sim 11 \text{ km s}^{-1}$, the rest velocity of the cloud. The emission of this line is not very extended, and reaches its maximum toward the H II region, suggesting that there is a significant fraction of the water emission arising from relatively quiescent gas associated to the innermost parts of the cloud. This is consistent with our modeling, which yielded an abundance of water of $\sim 1\text{--}3 \times 10^{-8}$ relative to H₂ in a thick layer of 10 mag surrounding the PDR and in the envelope.

The o-H₂O abundance is higher, $\sim 10^{-7}$ relative to H₂, in red high-velocity gas. The origin of the red wings that appear in the H₂O and in the high- J ¹²CO lines is more doubtful. The red wings of all species toward the H II region can be well reproduced by assuming an expanding PDR with relatively high expansion and turbulent velocities of 2 km s^{-1} and 5 km s^{-1} , respectively. Yet, the red wings could also have an outflow origin, particularly to the southwest half of the strip. In any case, the density of this gas is not very well constrained and therefore the precise values of the abundance need to be taken with caution, at an order-of-magnitude significance.

More work still remains to be done on the abundance of water in PDRs. The comparison of the derived abundances with

gas-phase chemical modeling shows that gas-phase PDR chemistry can reproduce the observed abundances in the very first hot layer of the PDR up to an $A_V \lesssim 1$. In this innermost layer, high-temperature chemistry is the main source of production of gas-phase water in the innermost layers of the PDR. However, the outflow can contribute to the H_2O emission at these high velocities. In the more shielded layers of the molecular cloud, the observational abundances differ by several orders of magnitude from the predictions of the gas-phase chemical model, suggesting that the freeze-out and photo-desorption mechanisms are the dominant processes at these cloud depths. Similarly, gas-phase chemical models overpredict the abundance of ammonia in the envelope by about one order of magnitude, suggesting that freeze-out into the grain surface needs to be taken into account for this species.

Acknowledgements. We acknowledge F. van der Tak for useful suggestions in improving this manuscript. We also acknowledge S. Treviño-Morales and A. Sanchez-Monge for their help with complementary data. We also thank the anonymous referee for his constructive report. This paper was partially supported by Spanish MICINN under projects and AYA2006-14876, AYA2009-07304 and within the program CONSOLIDER INGENIO 2010, under grant CSD2009-00038 Molecular Astrophysics: The *Herschel* and ALMA Era (ASTROMOL). Part of this work was supported by the Deutsche Forschungsgemeinschaft, project number Os 177/11. HIFI has been designed and built by a consortium of institutes and university departments from across Europe, Canada and the United States under the leadership of SRON Netherlands Institute for Space Research, Groningen, The Netherlands and with major contributions from Germany, France and the US. Consortium members are: Canada: CSA, U. Waterloo; France: CESR, LAB, LERMA, IRAM; Germany: KOSMA, MPIfR, MPS; Ireland, NUI Maynooth; Italy: ASI, IFSI-INAF, Osservatorio Astrofisico di Arcetri-INAF; The Netherlands: SRON, TUD; Poland: CAMK, CBK; Spain: Observatorio Astronómico Nacional (IGN), Centro de Astrobiología (CSIC-INTA); Sweden: Chalmers University of Technology – MC2, RSS & GARD; Onsala Space Observatory; Swedish National Space Board, Stockholm University – Stockholm Observatory; Switzerland: ETH Zurich, FHNW; USA: Caltech, JPL, NHSC.

References

- Agúndez, M., Goicoechea, J. R., Cernicharo, J., Faure, A., & Roueff, E. 2010, *ApJ*, 713, 662
- Berné, O., Fuente, A., Goicoechea, J. R., et al. 2009, *ApJ*, 706, L160
- Cernicharo, J. 2012, in *EAS Pub. Ser.*, eds. C. Stehlé, C. Joblin, & L. d'Hendecourt, in press
- Cernicharo, J., Gonzalez-Alfonso, E., Alcolea, J., Bachiller, R., & John, D. 1994, *ApJ*, 432, L59
- Cernicharo, J., Goicoechea, J. R., Daniel, F., et al. 2006a, *ApJ*, 649, L33
- Cernicharo, J., Goicoechea, J. R., Pardo, J. R., & Asensio-Ramos, A. 2006b, *ApJ*, 642, 940
- Chavarría, L., Herpin, F., Jacq, T., et al. 2010, *A&A*, 521, L37
- Choi, M., Evans, II, N. J., Tafalla, M., & Bachiller, R. 2000, *ApJ*, 538, 738
- Danby, G., Flower, D. R., Valiron, P., Schilke, P., & Walmsley, C. M. 1988, *MNRAS*, 235, 229
- Daniel, F., Dubernet, M.-L., & Grosjean, A. 2011, *A&A*, 536, A76
- de Graauw, T., Helmich, F. P., Phillips, T. G., et al. 2010, *A&A*, 518, L6
- Downes, D., Winnberg, A., Goss, W. M., & Johansson, L. E. B. 1975, *A&A*, 44, 243
- Fuente, A., Berné, O., Cernicharo, J., et al. 2010, *A&A*, 521, L23
- Giannakopoulou, J., Mitchell, G. F., Hasegawa, T. I., Matthews, H. E., & Maillard, J.-P. 1997, *ApJ*, 487, 346
- Ginard, D., González-García, M., Fuente, A., et al. 2012, *A&A*, 543, A27
- Goicoechea, J. R., & Le Boulrot, J. 2007, *A&A*, 467, 1
- Gonzalez García, M., Le Boulrot, J., Le Petit, F., & Roueff, E. 2008, *A&A*, 485, 127
- Habart, E., Boulanger, F., Verstraete, L., et al. 2003, *A&A*, 397, 623
- Habart, E., Dartois, E., Abergel, A., et al. 2010, *A&A*, 518, L116
- Habing, H. J. 1968, *Bull. Astron. Inst. Netherlands*, 19, 421
- Henning, T., Chini, R., & Pfau, W. 1992, *A&A*, 263, 285
- Hoare, M. G., Kurtz, S. E., Lizano, S., Keto, E., & Hofner, P. 2007, *Protostars and Planets V*, 181
- Hogerheijde, M. R., Bergin, E. A., Brinch, C., et al. 2011, *Science*, 334, 338
- Hollenbach, D., Kaufman, M. J., Bergin, E. A., & Melnick, G. J. 2009, *ApJ*, 690, 1497
- Joblin, C., Pilleri, P., Montillaud, J., et al. 2010, *A&A*, 521, L25
- Kristensen, L. E., Visser, R., van Dishoeck, E. F., et al. 2010, *A&A*, 521, L30
- Kristensen, L. E., van Dishoeck, E. F., Tafalla, M., et al. 2011, *A&A*, 531, L1
- Le Boulrot, J., Le Petit, F., Pinto, C., Roueff, E., & Roy, F. 2012, *A&A*, 541, A76
- Le Petit, F., Nehmé, C., Le Boulrot, J., & Roueff, E. 2006, *ApJS*, 164, 506
- Lebrón, M. E., Rodríguez, L. F., & Lizano, S. 2001, *ApJ*, 560, 806
- Lefloch, B., Cabrit, S., Codella, C., et al. 2010, *A&A*, 518, L113
- Loren, R. B. 1977, *ApJ*, 215, 129
- Massi, M., Felli, M., & Simon, M. 1985, *A&A*, 152, 387
- Melnick, G. J., Tolls, V., Neufeld, D. A., et al. 2010, *A&A*, 521, L27
- Ossenkopf, V., Röllig, M., Kramer, C., et al. 2011, in *EAS Pub. Ser.* 52, eds. M. Röllig, R. Simon, V. Ossenkopf, & J. Stutzki, 181
- Ott, S. 2010, in *Astronomical Data Analysis Software and Systems XIX*, eds. Y. Mizumoto, K.-I. Morita, & M. Ohishi, *ASP Conf. Ser.*, 434, 139
- Pety, J. 2005, in *SF2A-2005: Semaine de l'Astrophysique Française*, eds. F. Casoli, T. Contini, J. M. Hameury, & L. Pagani, 721
- Pilbratt, G. L., Riedinger, J. R., Passvogel, T., et al. 2010, *A&A*, 518, L1
- Pilleri, P., Montillaud, J., Berné, O., & Joblin, C. 2012, *A&A*, 542, A69
- Rizzo, J. R., Fuente, A., Rodríguez-Franco, A., & García-Burillo, S. 2003, *ApJ*, 597, L153
- Rizzo, J. R., Fuente, A., & García-Burillo, S. 2005, *ApJ*, 634, 1133
- Roelfsema, P. R., Helmich, F. P., Teyssier, D., et al. 2012, *A&A*, 537, A17
- Snell, R. L., Howe, J. E., Ashby, M. L. N., et al. 2000, *ApJ*, 539, L101
- Tafalla, M., Bachiller, R., & Wright, M. C. H. 1994, *ApJ*, 432, L127
- Tafalla, M., Bachiller, R., Wright, M. C. H., & Welch, W. J. 1997, *ApJ*, 474, 329
- van der Tak, F. F. S., Black, J. H., Schöier, F. L., Jansen, D. J., & van Dishoeck, E. F. 2007, *A&A*, 468, 627
- Xu, Y., Shen, Z.-Q., Yang, J., et al. 2006, *AJ*, 132, 20
- Yang, B., Stancil, P. C., Balakrishnan, N., & Forrey, R. C. 2010, *ApJ*, 718, 1062