



**HAL**  
open science

## A Performance Study of various Brain Source Imaging Approaches

Hanna Becker, Laurent Albera, Pierre Comon, Rémi Gribonval, Fabrice Wendling, Isabelle Merlet

► **To cite this version:**

Hanna Becker, Laurent Albera, Pierre Comon, Rémi Gribonval, Fabrice Wendling, et al.. A Performance Study of various Brain Source Imaging Approaches. 2014 IEEE International Conference on Acoustics, Speech, and Signal Processing (ICASSP), May 2014, Florence, Italy. pp.5910-5914. hal-00990273v1

**HAL Id: hal-00990273**

**<https://hal.science/hal-00990273v1>**

Submitted on 13 May 2014 (v1), last revised 9 Jul 2014 (v2)

**HAL** is a multi-disciplinary open access archive for the deposit and dissemination of scientific research documents, whether they are published or not. The documents may come from teaching and research institutions in France or abroad, or from public or private research centers.

L'archive ouverte pluridisciplinaire **HAL**, est destinée au dépôt et à la diffusion de documents scientifiques de niveau recherche, publiés ou non, émanant des établissements d'enseignement et de recherche français ou étrangers, des laboratoires publics ou privés.

# A PERFORMANCE STUDY OF VARIOUS BRAIN SOURCE IMAGING APPROACHES

*H. Becker*<sup>(1,2,3,4)</sup>, *L. Albera*<sup>(3,4,5)</sup>, *P. Comon*<sup>(2)</sup>, *R. Gribonval*<sup>(5)</sup>, *F. Wendling*<sup>(3,4)</sup>, *I. Merlet*<sup>(3,4)</sup>

(1) Univ. Nice Sophia Antipolis, CNRS, I3S, UMR 7271, F-06900 Sophia Antipolis, France

(2) GIPSA-Lab, CNRS UMR5216, Grenoble Campus, St Martin d’Heres, F-38402;

(3) INSERM, U1099, Rennes, F-35000, France;

(4) Université de Rennes 1, LTSI, Rennes, F-35000, France;

(5) INRIA, Centre Inria Rennes - Bretagne Atlantique, France.

## ABSTRACT

The objective of brain source imaging consists in reconstructing the cerebral activity everywhere within the brain based on EEG or MEG measurements recorded on the scalp. This requires solving an ill-posed linear inverse problem. In order to restore identifiability, additional hypotheses need to be imposed on the source distribution, giving rise to an impressive number of brain source imaging algorithms. However, a thorough comparison of different methodologies is still missing in the literature. In this paper, we provide an overview of priors that have been used for brain source imaging and conduct a comparative simulation study with seven representative algorithms corresponding to the classes of minimum norm, sparse, tensor-based, subspace-based, and Bayesian approaches. This permits us to identify new benchmark algorithms and promising directions for future research.

**Index Terms**— EEG, MEG, inverse problem, source localization, priors

## 1. INTRODUCTION

Electroencephalography (EEG) and magnetoencephalography (MEG) are two multi-sensor systems that are routinely used for the diagnosis and management of some diseases such as epilepsy or for the understanding of the brain functions in neuroscience research. The EEG/MEG measurements ( $\mathbf{X} \in \mathbb{R}^{N \times T}$ ), acquired with  $N$  sensors positioned on the scalp for  $T$  time samples, constitute a linear mixture of brain sources ( $\mathbf{S} \in \mathbb{R}^{D \times T}$ ) in the presence of noise ( $\mathbf{N} \in \mathbb{R}^{N \times T}$ ):

$$\mathbf{X} = \mathbf{G}\mathbf{S} + \mathbf{N}. \quad (1)$$

The mixture is characterized by the lead field matrix ( $\mathbf{G} \in \mathbb{R}^{N \times D}$ ), which can be computed given a model of the head and a predefined source space that is spanned by  $D$  dipoles

with fixed positions inside the brain [1]. We assume in this paper that the source space consists of dipoles that are located on the cortical surface with orientations perpendicular to this surface [2]. The objective of brain source imaging consists in reconstructing the sources  $\mathbf{S}$  based on the surface measurements  $\mathbf{X}$ . However, as the number of dipoles ( $\sim 10000$ ) generally exceeds the number of sensors ( $\sim 100$ ), the source imaging problem is ill-posed. In order to restore identifiability, additional hypotheses about the sources have to be made.

After several decades of research, giving rise to an impressive number of algorithms [3, 4, 5, 6], the source imaging problem is still one of the major challenges in biomedical engineering. Based on various priors, the proposed techniques pursue different methodological approaches, comprising minimum norm, sparse, tensor-based, Bayesian, and subspace-based methods. However, a thorough comparison including algorithms of all these approaches is still missing. In this paper, we fill this gap by providing a classification of different algorithms based on the exploited priors and conducting a simulation study in which we compare seven representative algorithms of different classes: sLORETA [7], MCE [8], VB-SCCD [9], MxNE [10], STWV-DA [11], Champagne [12], and 4-ExSo-MUSIC [13]. This permits us to identify new benchmark algorithms and directions for further research.

## 2. HYPOTHESES

The hypotheses that are exploited to solve the brain source imaging problem can be distinguished into three categories: hypotheses that apply to the spatial, the temporal, and the spatio-temporal distribution of the sources. In the following, we provide an overview and a short description of the priors which have been used in brain source imaging.

### 2.1. Hypotheses on the spatial distribution

**S1) Minimum energy** The power of the sources is physiologically limited. A popular approach thus consists in identifying the spatial distribution of minimum energy [14, 7].

H. Becker was supported by Conseil Régional PACA and by CNRS. P. Comon was supported by the European Research Council under the European Community’s Seventh Framework Programme FP7/2007-2013 under Grant Agreement 320594. We also acknowledge the support of Programme ANR 2010 BLAN 0309 01 (project MULTIMODEL).

**S2) Minimum energy in a transform domain** As the spatial distribution of the sources is unlikely to contain abrupt changes, it can be assumed to be smooth [15]. In practice, this is achieved by constraining the Laplacian of the source spatial distribution to be of minimum energy.

**S3) Sparsity** In practice, it is often reasonable to assume that only a small fraction of the source dipoles contributes to the measured signals of interest in a significant way. The signals of the other source dipoles are thus expected to be approximately zero, leading to the concept of sparsity [8].

**S4) Sparsity in a transformed domain** If the number of active dipoles exceeds the number of sensors, the source distribution is not sufficiently sparse for standard methods based on sparsity to yield accurate results, leading to too focused source estimates. In this context, another idea consists in transforming the sources into a domain where their distribution is sparser than in the original source space and imposing sparsity in the transformed domain [9].

**S5) Separability in space and wavevector of the space-wavevector content** For each superficial distributed source, one can assume that the space-wavevector matrix at each time point, which is obtained by computing a local spatial Fourier transform of the measurements, can be factorized into a function that depends on the space variable only and a function that depends on the wavevector variable only [16]. The space and wavevector variables are thus said to be separable, allowing for the use of tensor decomposition methods.

**S6) Gaussian joint probability density function with parameterized spatial covariance** This prior assumes the source signals to be random variables that follow a Gaussian distribution with a spatial covariance matrix that can be described by a linear combination of a certain number of basis covariance functions [6, 12]. This combination is characterized by so-called hyperparameters, which have to be identified in the source imaging process.

## 2.2. Hypotheses on the temporal distribution

**T1) Smoothness** Since the autocorrelation function of the sources of interest usually has a full width at half maximum of several samples, the temporal distribution of the sources can be assumed to be smooth [10].

**T2) Sparsity in a transformed domain** This assumption implies that the source signals admit a sparse representation in a transformed domain, which can, for example, be achieved by a wavelet or Gabor transform applied to the temporal dimension of the data [17]. The transformed signals can then be modeled using a small number of basis functions or atoms, which are determined by the source imaging algorithm.

**T3) Pseudo-periodicity with variations in amplitude** If the recorded data comprises recurrent events like a repeated time pattern that can be associated to the sources of interest, such as interictal epileptic spikes, one can exploit the repetitions as

an additional diversity [18]. This permits us to employ tensor-based methods.

**T4) Separability in time and frequency of the time-frequency content** Under certain conditions such as oscillatory signals, the time and frequency variables of data transformed into the time-frequency domain (for example, by applying a wavelet transform to the measurements) can be assumed to separate (cf. hypothesis S4) [19]. This hypothesis gives rise to tensor-based approaches for source separation.

**T5) Non-zero higher-order marginal cumulants** Regarding the measurements as realizations of a vector of random variables, this hypothesis is required when resorting to statistics of order higher than two, that offer a better performance and identifiability than approaches based on second order statistics [13]. It is generally verified in practice, as the signals of interest usually do not follow a Gaussian distribution.

## 2.3. Hypotheses on the spatio-temporal distribution

**ST) Synchronous dipoles** Contrary to point sources, which can be modeled by a single dipole, distributed sources are composed of a certain number of grid dipoles. These dipoles can be assumed to transmit synchronous signals [13].

## 3. ALGORITHMS

In this section, we classify seven representative algorithms based on the hypotheses that they exploit. Furthermore, we briefly describe the characteristics of each method.

**sLORETA** sLORETA [7] belongs to the class of minimum norm estimates (MNE) [14, 20], which exploit hypothesis S1) by minimizing the  $L_2$ -norm regularized cost function:

$$L(\mathbf{s}) = \|\mathbf{x} - \mathbf{G}\mathbf{s}\|_2^2 + \lambda \|\mathbf{s}\|_2^2 \quad (2)$$

where  $\mathbf{x}$  and  $\mathbf{s}$  correspond to columns of  $\mathbf{X}$  and  $\mathbf{S}$ , respectively. The first term on the right hand side of (2) is referred to as the data fit term, while the second term is called the regularization term. The regularization parameter  $\lambda$  manages a balance between both terms. The particularity of sLORETA consists in providing a source estimate that is normalized with respect to the source covariance, leading to an unbiased solution in the case of a single dipole source.

**MCE** The minimum current estimate (MCE) algorithm [8] has been developed to overcome the problem of blurred source reconstructions encountered with MNE and is based on hypothesis S3). In order to provide focused source estimates, it replaces the regularization term in (2) by the sparsity-inducing  $L_1$ -norm,  $\|\mathbf{s}\|_1$ . This leads to a convex optimization problem, for which identifiability conditions and efficient algorithms are available.

**VB-SCCD** The VB-SCCD algorithm [9] imposes sparsity on the variational map, which characterizes variations in amplitude from one dipole source to adjacent dipole sources. This leads to a piecewise constant spatial distribution of the

sources. To apply hypothesis S4), a regularization term of the form  $\|\mathbf{T}\mathbf{s}\|_1$  is used, where  $\mathbf{T}$  is a transformation matrix which implements the variation operator.

**MxNE** The mixed norm estimate (MxNE) [10] combines the hypotheses S3) and T1), leading to a spatially sparse, but temporally smooth source distribution. To achieve this, a mixed  $L_{1,2}$ -norm regularization term is employed, leading to the cost function:

$$L(\mathbf{S}) = \|\mathbf{X} - \mathbf{G}\mathbf{S}\|_{\mathbb{F}}^2 + \lambda\|\mathbf{S}\|_{1,2}. \quad (3)$$

**STWV-DA** The space-time-wavevector based disk algorithm (STWV-DA) [11] belongs to the class of tensor-based approaches and proceeds in two steps: i) the separation of different distributed sources using tensor decomposition based on hypotheses ST) and S5) (alternatively, one could exploit hypothesis T3) or T4)) and ii) the identification of grid dipoles characterizing each distributed source using hypothesis S4). To construct a third order tensor, a local spatial Fourier transform is applied to the measurements, leading to space-time-wavevector data. The tensor is then decomposed using the canonical polyadic decomposition [21], which permits to identify a vector of spatial characteristics for each distributed source. Subsequently, to identify the dipoles belonging to each distributed source, this vector is compared to the spatial characteristics of elementary (circular) distributed sources whose union should fit the expected distributed source.

**Champagne** The Champagne algorithm [12] is an empirical Bayesian approach and assumes that the sources at each time point are described by a zero-mean Gaussian random vector of covariance  $\mathbf{C}_s$  corresponding to hypothesis S6). The main step of the algorithm consists in estimating the covariance  $\mathbf{C}_s$  from the data. This is achieved by an optimization process that requires an estimate of the noise covariance matrix. Once the matrix  $\mathbf{C}_s$  is known, it permits to directly derive an estimate of the signals. In the absence of noise and for a source space with sufficiently high resolution, Champagne has been shown to provide a perfect source reconstruction.

**4-ExSo-MUSIC** The 4-ExSo-MUSIC algorithm [13] is a representative of the class of subspace-based methods and exploits the 4-th order cumulants of the measurements, thus relying on assumption T5). Exploiting the orthogonality between the 4-th order signal and noise subspaces of the quadricovariance matrix, 4-ExSo-MUSIC identifies the elements of a dictionary of potential distributed sources (assumption ST)) that best describe the measurements based on a metric. The dictionary is constructed in the same way as for STWV-DA, thus also using hypothesis S4). The estimated sources are obtained as a union of a certain number of dictionary elements, determined after thresholding the 4-ExSo-MUSIC metric.

## 4. SIMULATIONS

To compare the performances of the different source imaging algorithms, we apply them to realistic simulated data in

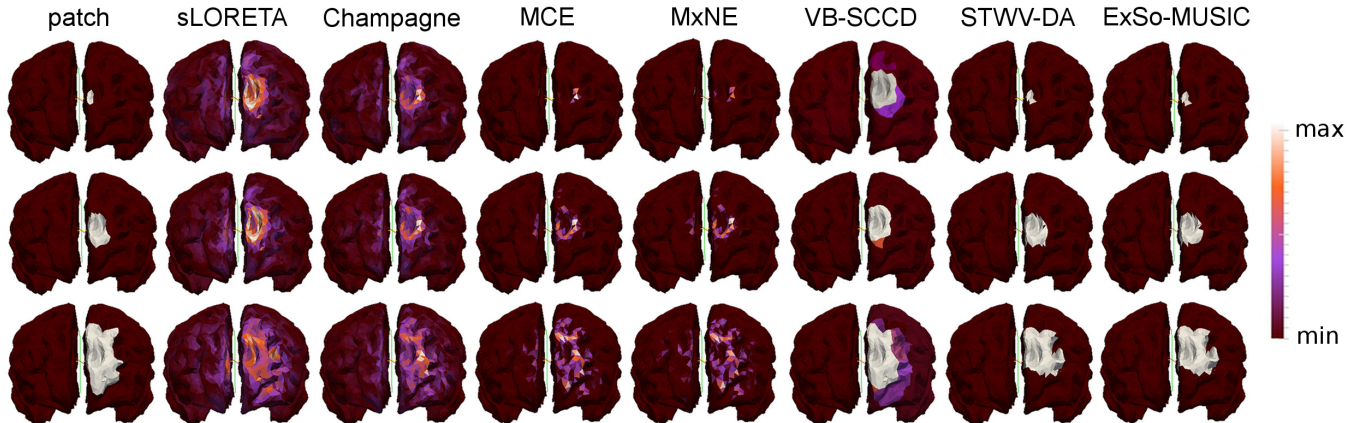
the context of epileptic EEG activity. We consider a realistic head model with three compartments representing the brain, the skull, and the scalp. The source space is composed of 19626 dipoles located on the cortical surface. The lead field matrix describing the propagation to 91 electrodes is computed numerically using a boundary element method. The epileptic source regions are modeled by patches which consist of adjacent grid dipoles. Highly correlated, physiologically realistic epileptiform spike-like signals are generated for all dipoles belonging to a patch using a coupled neuronal population model [22]. To simulate epileptic activity spreading from one brain region to another, for scenarios with two patches, we use the same activities except for a time delay depending on the distance between the patches. All dipoles that do not belong to a patch are considered as generators of background activity. The SNR of epileptic and background activity is adjusted to realistic values. After spatially prewhitening the data based on the noise covariance matrix, we apply the sLORETA, MCE, MxNE, VB-SCCD, STWV-DA, Champagne, and 4-ExSo-MUSIC source imaging algorithms to the data of 10 epileptic spikes, which are concatenated for 4-ExSo-MUSIC and averaged for the other algorithms. To evaluate the source localization results, we employ the distance of localization error (DLE) [23], which is defined as follows:

$$\text{DLE} = \frac{1}{2Q} \sum_{k \in \mathcal{I}} \min_{\ell \in \hat{\mathcal{I}}} \|\mathbf{r}_k - \mathbf{r}_\ell\| + \frac{1}{2\hat{Q}} \sum_{k \in \hat{\mathcal{I}}} \min_{\ell \in \mathcal{I}} \|\mathbf{r}_k - \mathbf{r}_\ell\|. \quad (4)$$

Here,  $\mathcal{I}$  and  $\hat{\mathcal{I}}$  denote the original and estimated sets of indices of all grid dipoles belonging to an active patch,  $Q$  and  $\hat{Q}$  are the numbers of original and estimated active grid dipoles, and  $\mathbf{r}_k$  denotes the position of the  $k$ -th source dipole. The DLE is averaged over 50 realizations, obtained with different spike-like signals and varying background activity.

First, we study the influence of the patch size on the source localization results. To this end, we vary the size of a patch located in the superior frontal gyrus (SupFr), considering 10, 100, and 400 grid dipoles, which corresponds to 0.5, 5, and 20  $\text{cm}^2$  of the cortical surface. Fig. 1 shows the original patches and a typical example of the reconstructed source configurations obtained by the different source imaging algorithms. sLORETA and Champagne yield similar results, which are blurred for the smallest patch and do not permit to accurately determine the spatial extent of the patches. MCE and MxNE provide very focal source estimates and are not suited to recover the size of the patch either. VB-SCCD overestimates the size of the smallest patch, recovering a much larger source region. However, for medium to large patches, it provides good estimates of the patches. STWV-DA and 4-ExSo-MUSIC yield similar source reconstructions that are very close to the ground truth for the small and medium patch and slightly worse for the large patch. These results are also reflected by the DLE values shown in Table 1. Overall, the best performances are achieved for the patch of medium size.

Second, we examine three scenarios with two patches,



**Fig. 1.** Original patch and source configurations estimated with different source imaging algorithms for the patch SupFr composed of 10, 100, and 400 dipoles.

**Table 1.** DLE (in cm) of source imaging algorithms for different scenarios

scenario	sLORETA	Champagne	MCE	MxNE	VB-SCCD	STWV-DA	4-ExSo-MUSIC
SupFr, small size	3.62	5.15	4.80	4.94	3.30	0.41	0.65
SupFr, medium size	1.97	2.51	2.95	3.03	0.53	0.43	0.44
SupFr, large size	5.45	3.38	4.02	4.78	0.89	1.14	1.15
InfFr+SupFr, small dist.	2.55	3.21	3.71	3.58	1.16	0.73	0.85
InfFr+InfPa, medium dist.	2.97	3.31	3.51	3.52	1.23	0.59	0.61
SupFr+SupOcc, large dist.	2.49	2.63	2.95	3.11	0.44	0.77	0.63

composed of 100 dipoles each and all located on the left hemisphere: patches InfFr and SupFr (inferior frontal and superior frontal gyri) with small distance, patches InfFr and InfPa (inferior frontal and inferior parietal gyri) with medium distance, and patches SupFr and SupOcc (superior frontal and superior occipital gyri) with large distance. Due to limited space, we only provide the results in terms of DLE, summarized in Table 1. While most methods show a tendency to yield somewhat improved source estimates for larger patch distance, the DLE does not decrease systematically with increasing distance for all algorithms and the source imaging performance seems to depend more on the patch position and form than the distance between two active patches. However, these results show that there is a gap between the performance of sLORETA, Champagne, MCE, and MxNE, which achieve a DLE between 2.5 and 3.7 cm for the three scenarios, and the DLE of VB-SCCD, STWV-DA, and 4-ExSo-MUSIC, that is smaller than 1.3 cm. This is due to the fact that VB-SCCD, STWV-DA, and 4-ExSo-MUSIC permit to identify distributed sources, contrary to sLORETA, Champagne, MCE, and MxNE, as has also become apparent in the previous simulation.

## 5. CONCLUSIONS

In this paper, we have proposed a classification of different source imaging algorithms based on the hypotheses that

are imposed on the temporal and spatial distributions of the sources. To illustrate the use of various hypotheses, we have provided a short presentation of seven representative algorithms, whose performance has been compared in a simulation study. This study has demonstrated the superior performance of VB-SCCD, STWV-DA, and 4-ExSo-MUSIC for the recovery of distributed sources as compared to sLORETA, Champagne, MCE, and MxNE. Among the latter four methods, we have observed that sLORETA generally leads to the best performance. Moreover, we noticed that most algorithms (except for STWV-DA and 4-ExSo-MUSIC) require spatial prewhitening or an estimate of the noise covariance in order to yield accurate results. Therefore, the best overall performance, both in terms of robustness and accuracy, is achieved by STWV-DA. Further studies should be conducted to confirm these results.

To further enhance the performance, one could consider integrating the steps of two-step procedures such as STWV-DA into one single step in order to process all the available information and constraints at the same time. Another promising perspective for future research consists in exploring different combinations of a priori information, for example, by merging successful strategies of different recently established source imaging approaches, such as tensor-based, subspace-based, or Bayesian approaches and sparsity.

## 6. REFERENCES

- [1] A. Gramfort, *Mapping, timing and tracking cortical activations with MEG and EEG: Methods and application to human vision*, Ph.D. thesis, Telecom ParisTech, 2009.
- [2] A. M. Dale and M. I. Sereno, “Improved localization of cortical activity by combining EEG and MEG with MRI cortical surface reconstruction: a linear approach,” *Journal of Cognitive Neuroscience*, vol. 5, no. 2, pp. 162–176, 1993.
- [3] S. Baillet, J. C. Mosher, and R. M. Leahy, “Electromagnetic brain mapping,” *IEEE Signal Processing Magazine*, vol. 18, no. 6, pp. 14–30, Nov. 2001.
- [4] C. M. Michel, M. M. Murray, G. Lantz, S. Gonzalez, L. Spinelli, and R. Grave De Peralta, “EEG source imaging,” *Clinical Neurophysiology*, vol. 115, no. 10, pp. 2195–2222, Oct. 2004.
- [5] R. Grech, T. Cassar, J. Muscat, K. P. Camilleri, S. G. Fabri, M. Zervakis, P. Xanthopoulos, V. Sakkalis, and B. Vanrumste, “Review on solving the inverse problem in EEG source analysis,” *Journal of NeuroEngineering and Rehabilitation*, vol. 5, Nov. 2008.
- [6] D. Wipf and S. Nagarajan, “A unified Bayesian framework for MEG/EEG source imaging,” *NeuroImage*, vol. 44, pp. 947 – 966, 2009.
- [7] R. D. Pascual-Marqui, “Standardized low resolution brain electromagnetic tomography (sLORETA): technical details,” *Methods and Findings in Experimental and Clinical Pharmacology*, 2002.
- [8] K. Uutela, M. Hamalainen, and E. Somersalo, “Visualization of magnetoencephalographic data using minimum current estimates,” *NeuroImage*, vol. 10, pp. 173 – 180, 1999.
- [9] L. Ding, “Reconstructing cortical current density by exploring sparseness in the transform domain,” *Physics in Medicine and Biology*, vol. 54, pp. 2683 – 2697, 2009.
- [10] E. Ou, M. Hamalainen, and P. Golland, “A distributed spatio-temporal EEG/MEG inverse solver,” *NeuroImage*, vol. 44, 2009.
- [11] H. Becker, L. Albera, P. Comon, M. Haardt, G. Birot, F. Wendling, M. Gavaret, C. G. Bénar, and I. Merlet, “EEG extended source localization: tensor-based vs. conventional methods,” *submitted to NeuroImage*, 2013.
- [12] D. Wipf, J. Owen, H. Attias, K. Sekihara, and S. Nagarajan, “Robust Bayesian estimation of the location, orientation, and time course of multiple correlated neural sources using MEG,” *NeuroImage*, vol. 49, pp. 641 – 655, 2010.
- [13] G. Birot, L. Albera, F. Wendling, and I. Merlet, “Localisation of extended brain sources from EEG/MEG: the ExSo-MUSIC approach,” *NeuroImage*, vol. 56, pp. 102 – 113, 2011.
- [14] M. S. Hämäläinen and R. J. Ilmoniemi, “Interpreting magnetic fields of the brain: Estimates of current distributions,” Technical Report TKK-F-A559, Helsinki University of Technology, Finland, 1984.
- [15] R. D. Pascual-Marqui, C. M. Michel, and D. Lehmann, “Low resolution electromagnetic tomograph: A new method for localizing electrical activity in the brain,” *Int. Journal of Psychophysiology*, vol. 18, pp. 49 – 65, 1994.
- [16] H. Becker, P. Comon, L. Albera, M. Haardt, and I. Merlet, “Multi-way space-time-wave-vector analysis for EEG source separation,” *Signal Processing*, vol. 92, pp. 1021–1031, 2012.
- [17] A. Gramfort, D. Strohmeier, J. Haueisen, M. Hamalainen, and M. Kowalski, “Time-frequency mixed-norm estimates: Sparse M/EEG imaging with non-stationary source activations,” *NeuroImage*, vol. 70, pp. 410 – 422, 2013.
- [18] J. Möcks, “Decomposing event-related potentials: a new topographic components model,” *Biological Psychology*, vol. 26, pp. 199–215, 1988.
- [19] F. Miwakeichi, E. Martinez-Montes, P. A. Valdes-Sosa, N. Nishiyama, H. Mizuhara, and Y. Yamaguchi, “Decomposing eeg data into space-time-frequency components using parallel factor analysis,” *NeuroImage*, vol. 22, pp. 1035–1045, 2004.
- [20] R. D. Pascual-Marqui, “Review of methods for solving the EEG inverse problem,” *International Journal of Bioelectromagnetism*, vol. 1, no. 1, pp. 75 – 86, 1999.
- [21] P. Comon, L. Luciani, and A. L. F. De Almeida, “Tensor decompositions, alternating least squares and other tales,” *Journal of Chemometrics*, vol. 23, pp. 393–405, 2009.
- [22] D. Cosandier-Rimélé, J.-M. Badier, P. Chauvel, and F. Wendling, “A physiologically plausible spatio-temporal model for EEG signals recorded with intracerebral electrodes in human partial epilepsy,” *IEEE Transactions on Biomedical Engineering*, vol. 54, no. 3, pp. 380–388, Mar. 2007.
- [23] J.-H. Cho, S. B. Hong, Y.-J. Jung, H.-C. Kang, H. D. Kim, M. Suh, K.-Y. Jung, and C.-H. Im, “Evaluation of algorithms for intracranial EEG (iEEG) source imaging of extended sources: feasibility of using (iEEG) source imaging for localizing epileptogenic zones in secondary generalized epilepsy,” *Brain Topography*, , no. 24, pp. 91–104, 2011.