



HAL
open science

Noise-Corrected Estimation of Complex Modulus in Accord With Causality and Thermodynamics: Application to an Impact Test.

Pierre Collet, Gérard Gary, Bengt Lundberg

► **To cite this version:**

Pierre Collet, Gérard Gary, Bengt Lundberg. Noise-Corrected Estimation of Complex Modulus in Accord With Causality and Thermodynamics: Application to an Impact Test.. *Journal of Applied Mechanics*, 2013, 80 (011018-1), pp.JANUARY 2013. 10.1115/1.4007081 . hal-00968927

HAL Id: hal-00968927

<https://hal.science/hal-00968927v1>

Submitted on 4 Apr 2014

HAL is a multi-disciplinary open access archive for the deposit and dissemination of scientific research documents, whether they are published or not. The documents may come from teaching and research institutions in France or abroad, or from public or private research centers.

L'archive ouverte pluridisciplinaire **HAL**, est destinée au dépôt et à la diffusion de documents scientifiques de niveau recherche, publiés ou non, émanant des établissements d'enseignement et de recherche français ou étrangers, des laboratoires publics ou privés.

Noise-corrected Estimation of Complex Modulus in Accord With Causality and Thermodynamics: Application to an Impact test

P. Collet¹, G. Gary², B. Lundberg^{2,3}

¹ Centre de Physique Théorique, CNRS UMR 7644, Ecole Polytechnique, 91128 Palaiseau, France

² Laboratoire de Mécanique des Solides, CNRS UMR 7649, Ecole Polytechnique, 91128 Palaiseau, France

³ The Ångström Laboratory, Uppsala University, Box 534, SE-751 21 Uppsala, Sweden

Background. Methods for estimation of the complex modulus generally produce data from which discrete results can be obtained for a set of frequencies. As these results are normally afflicted by noise, they are not necessarily consistent with the principle of causality and requirements of thermodynamics.

Method of Approach: A method is established for noise-corrected estimation of the complex modulus, subject to the constraints of causality, positivity of dissipation rate and reality of relaxation function, given a finite set of angular frequencies and corresponding complex moduli obtained experimentally. Noise reduction is achieved by requiring that two self-adjoint matrices formed from the experimental data should be positive semi-definite.

Results: The method provides a rheological model that corresponds to a specific configuration of springs and dashpots. The poles of the complex modulus on the positive imaginary frequency axis are determined by a subset of parameters obtained as the common positive zeros of certain rational functions, while the remaining parameters are

obtained from a least squares fit. If the set of experimental data is sufficiently large, the level of refinement of the rheological model is in accordance with the material behaviour and the quality of the experimental data. The method was applied to an impact test with a Nylon bar specimen. In this case, data at the 29 lowest resonance frequencies resulted in a rheological model with 14 parameters.

Conclusions: The method has added improvements to the identification of rheological models as follows: (1) Noise reduction is fully integrated. (2) A rheological model is provided with a number of elements in accordance with the complexity of the material behaviour and the quality of the experimental data. (3) Parameters determining poles of the complex modulus are obtained without use of a least squares fit.

Keywords : Mechanical properties of materials, constitutive modeling of materials, impact, wave propagation.

1 Introduction

A variety of methods for identification of viscoelastic materials have been proposed and used since long. Such methods for estimation of complex-valued frequency-dependent material parameters such as the complex modulus, generally produce data from which values of these parameters can be obtained for a set of discrete frequencies. Commercially available machines for dynamic mechanical analysis (DMA) [1] as well as specialized and laboratory-specific set-ups are used. Some make use of forced or free vibrations of a structure such as a bar, while others involve impact, waves and various transient effects.

Garrett [2] used a method based on acoustic resonance in a study of the temperature dependency of the Young's modulus. A similar method was proposed by Guo and Brown [3] for viscoelastic materials. With this method, a 1D theoretical model is fitted to experiments on frequency intervals of finite length which provides values of the complex modulus at discrete frequencies. Some methods [4] make use of random excitation at one end of a beam and measurement of acceleration at the other end. With the assumption of 1D viscoelastic behaviour, the complex Young's modulus is derived from the amplitude ratio and phase shift between acceleration and excitation. Pintelon et al. [5] proposed a method which takes dispersion into account by use of Love's model [6]. They used a resonant frequency method in conjunction with forced vibration. Their method is based on measurement of the force applied at one end of a bar and the axial displacement at a given section. Noise reduction is provided by repetition of measurements and identification of a rheological model. Waves in bars generated by impact have been used to determine the viscoelastic properties of materials by, e.g., Blanc [7, 8], Lundberg and

Blanc [9], Lundberg and Ödeen [10], Hillström et al. [11], Othman [12], and Mousavi et al. [13].

It is not always ensured that the real and imaginary parts of the complex modulus are consistent with the principle of causality. One way to achieve such consistency is to express them in terms of a rheological model constituted by linear springs and dashpots [5, 14]. An alternative way consists in making sure that the complex modulus is consistent with the Kramers-Kronig relations. Another fundamental constraint on the complex modulus comes from the second principle of thermodynamics: the dissipation per cycle must be positive for any harmonic load. Furthermore, the relaxation function, which is the inverse Fourier transform of the complex modulus, must be real. See, e.g., Landau and Lifchitz [15, 16] about these constraints.

In Section 2 we present a method for noise-corrected estimation of the complex modulus of a viscoelastic material, subject to the constraints of causality, positivity of dissipation and reality of relaxation function, given an experimental set of frequencies and corresponding values of the complex modulus. It provides the structure, the number and type of elements, and the parameters of a rheological model and is based on results from different areas of mathematics and physics. As far as we know, similar results have not been combined previously into a practical method for producing a noise-corrected rheological model of suitable complexity that satisfies the above mentioned constraints. The estimation method can be used in conjunction with any test method from which a set of frequencies and corresponding values of the complex modulus can be obtained. In Section 3 the use of the method will be illustrated with such data obtained by impacting a Nylon bar specimen and observing its response at its resonance frequencies.

2 Estimation Method

2.1 Theory. According to Boltzmann's model of viscoelastic materials, the relation between stress $\sigma(t)$ and strain $\varepsilon(t)$ is given by the convolution

$$\sigma(t) = \int_0^{\infty} G(s) \frac{d\varepsilon}{dt}(t-s) ds \quad (1)$$

of the stress relaxation function $G(t)$ and the strain rate $d\varepsilon/dt$, where t is time (e.g., [17]). After Fourier transformation, this relation becomes

$$\hat{\sigma}(\omega) = E(\omega) \hat{\varepsilon}(\omega), \quad (2)$$

where $E(\omega) = i\omega \hat{G}(\omega)$ is the complex modulus, $\hat{G}(\omega)$ is the Fourier transform of $G(t)$ and ω is the angular frequency.

The complex modulus must satisfy the three constraints of causality, positivity of the dissipation rate and reality of the relaxation function. The problem to be considered is that of finding a noise-corrected complex modulus $E(\omega)$, subject to these constraints, given a finite set of angular frequencies $\omega_1, \dots, \omega_n$ and corresponding complex moduli E_1, \dots, E_n obtained experimentally.

The constraint of causality implies the Kramers-Kronig relations that connect the real and imaginary parts of the complex modulus. If either the real or the imaginary part

can be estimated accurately at a sufficient number of frequencies, these relations can be used to estimate the other part. For several experimental methods based on wave propagation, e.g. [18, 19], and the one to be presented in this paper, such a procedure does not work as the experimental noise is rather uniformly distributed over the real and imaginary parts of the complex modulus. Furthermore, results for the complex modulus can be obtained only for a relatively small set of frequencies with the experimental method of this paper. Here, therefore, we adopt the approach of estimating simultaneously the real and imaginary parts of the complex modulus. This will also allow us to extend the results to regions without measurements, especially at low frequencies.

The constraints of causality and of positivity of the dissipation rate [15-17, 20] are equivalent to requiring that the function $E(\omega)$ be analytic in the lower half plane and that its imaginary part be positive on the positive real axis, respectively. The constraint of reality of the relaxation function is equivalent to the requirement $E(-\bar{\omega}) = \overline{E(\omega)}$. Here we will use the stronger constraint of complete monotonicity of the relaxation function as proposed by Hanyga [17] and Bouleau [21] and derived by Beris and Edwards [22] for fluids. This constraint, which essentially means that the relaxation function and its derivatives must be monotone, is satisfied by most rheological models [17]. To which extent it holds for a particular real material can be verified from experimental data.

The property of complete monotonicity of the relaxation function implies that this function is the Laplace transform of a positive function (the Bernstein-Widder Theorem, see [17]). This means that the complex modulus $E(\omega)$ is the sum of a linear function and a Stieltjes transform. More precisely, there exist two parameters $\alpha_0 > 0$ and $\beta_0 \geq 0$, and a function $h(s) \geq 0$, defined on the positive real axis such that

$$E(\omega) = \alpha_0 + i\omega\beta_0 - \int_0^{\infty} \frac{h(s)}{s + i\omega} ds. \quad (3)$$

Such functions $E(\omega)$ are analytic outside the positive imaginary axis of the complex ω plane and they satisfy the three constraints. Thus, they are analytic in the lower half plane and therefore satisfy the constraint of causality; their imaginary part is positive on the positive real axis and therefore the constraint of positiveness of the dissipation rate holds. Finally, the constraint of reality of the relaxation function is satisfied as $E(-\bar{\omega}) = \overline{E(\omega)}$. It should be noted that the function $h(s)$ can have singularities such as delta functions.

In order to check whether experimental data are of the form of Eq. (3), in particular for the purpose of determining the constants α_0 and β_0 , and the function h , it is convenient to apply the transformation

$$f(z) = -\frac{E(iz)}{z}. \quad (4)$$

It has the representation

$$f(z) = \beta_0 + \int \frac{g(s)}{s - z} ds, \quad (5)$$

with

$$g(s) = \left(\alpha_0 - \int_0^{\infty} \frac{h(u)}{u} du \right) \delta(s) + \frac{h(s)}{s}, \quad (6)$$

where $\delta(s)$ is a delta function at the origin, and $g(s) = 0$ for $s < 0$. As the static complex modulus

$$E(0) = \alpha_0 - \int_0^{\infty} \frac{h(s)}{s} ds \quad (7)$$

is positive and finite, the function $f(z)$ is analytic except on the positive real axis, and positive on the negative real axis.

The problem of finding a function $f(z)$ with the representation (5) given its values for finitely many z was studied in detail by Krein and Nudelman [23]. Some of their results, when formulated for the complex modulus $E(\omega)$, are as follows. From the values E_1, E_2, \dots, E_n of the function $E(\omega)$ at n angular frequencies $\omega_1, \omega_2, \dots, \omega_n$ one can form two matrices with elements

$$M_{j,k}^{(1)} = i \frac{\bar{E}_j - E_k}{\omega_j + \omega_k} = \beta_0 + \int_0^{\infty} h(s) \frac{ds}{(s - i\omega_j)(s + i\omega_k)}, \quad (8)$$

$$M_{j,k}^{(2)} = \frac{\bar{E}_j / \omega_j + E_k / \omega_k}{\omega_j + \omega_k} = \frac{E(0)}{\omega_j \omega_k} + \int_0^{\infty} \frac{h(s)}{s} \frac{ds}{(s - i\omega_j)(s + i\omega_k)}. \quad (9)$$

It can be verified that the matrix $\mathbf{M}^{(1)}$ is positive semi-definite. In particular, it is self-adjoint with non-negative eigenvalues (recall that β_0 and h are non-negative). The same properties hold for $\mathbf{M}^{(2)}$ since $E(0) > 0$. If one of the matrices $\mathbf{M}^{(1)}$ or $\mathbf{M}^{(2)}$ has a zero eigenvalue, the function $E(\omega)$ is completely determined and is a rational fraction (see [23] and below). However, the occurrence of a zero eigenvalue is not a necessary consequence of general principles, and if none of the matrices $\mathbf{M}^{(1)}$ and $\mathbf{M}^{(2)}$ has a zero eigenvalue, the function $E(\omega)$ cannot be completely determined from the data. We refer to Krein Nudelman (1998) for more details.

Assume now that \mathbf{a} is an eigenvector corresponding to a zero eigenvalue of $\mathbf{M}^{(1)}$. Then, since $\mathbf{M}^{(1)}\mathbf{a} = \mathbf{0}$, we also have $\langle \mathbf{a}, \mathbf{M}^{(1)}\mathbf{a} \rangle = 0$, i.e.,

$$\beta_0 \left| \sum_{k=1}^n a_k \right|^2 + \int_0^\infty h(s) \left| \sum_{k=1}^n \frac{a_k}{s + i\omega_k} \right|^2 ds = 0. \quad (10)$$

Since both terms in the left member are non-negative, they must vanish. In particular, the function $h(s)$ must be a linear combination $\sum_{l=1}^p \gamma_l \delta(s - s_l)$ with coefficients $\gamma_l \geq 0$ of delta functions $\delta(s - s_l)$ at the positive zeros s_1, \dots, s_p ($p < n$) of the rational function

$$\sum_{k=1}^n \frac{a_k}{s + i\omega_k}. \quad (11)$$

For the complex modulus given by Eq. (3) this implies the model

$$E(\omega) = \alpha_0 + i\omega\beta_0 - \sum_{l=1}^{l=p} \frac{\gamma_l}{s_l + i\omega} \quad , \quad (12)$$

where $\alpha_0 > 0$ and $\beta_0, \gamma_1, \gamma_2, \dots, \gamma_p$ are non-negative.

The same considerations hold for the matrix $\mathbf{M}^{(2)}$ and should lead to the same model. If \mathbf{b} is an eigenvector corresponding to a zero eigenvalue of $\mathbf{M}^{(2)}$, we deduce as above that the function $h(s)$ must also be a linear combination with non-negative coefficients of delta functions at the positive zeros of the rational function

$$\sum_{k=1}^n \frac{b_k}{s + i\omega_k} \quad . \quad (13)$$

In particular, we only need to consider the common positive zeros of the rational functions (11) and (13). Moreover, if there are several linearly independent eigenvectors corresponding to a zero eigenvalue, we get a set of positive zeros for each of them and should keep only the ones which are common.

Equation (12) corresponds to the $2(p+1)$ parameter rheological model shown in Fig. 1 consisting of p full Maxwell elements (each consisting of a spring and a dashpot in series) and two degenerated such elements (a spring, a dashpot) in parallel. The complex modulus represented by this model is

$$E(\omega) = \kappa_0 + i\omega\eta_0 + \sum_{l=1}^p \frac{i\omega\kappa_l}{\kappa_l/\eta_l + i\omega} = \kappa_0 + \sum_{l=1}^p \kappa_l + i\omega\eta_0 - \sum_{l=1}^p \frac{\kappa_l^2/\eta_l}{\kappa_l/\eta_l + i\omega}. \quad (14)$$

The $p+1$ stiffnesses $\kappa_0, \kappa_1, \dots, \kappa_p$ of the springs and the $p+1$ viscosities $\eta_0, \eta_1, \dots, \eta_p$ of the dashpots are related to the $2(p+1)$ parameters and $\alpha_0, \beta_0, s_1, s_2, \dots, s_p, \gamma_1, \gamma_2, \dots, \gamma_p$ of Eq. (12) by the relations

$$\kappa_0 = \alpha_0 - \sum_{l=1}^p \frac{\gamma_l}{s_l}, \quad \kappa_l = \frac{\gamma_l}{s_l}, \quad \eta_0 = \beta_0, \quad \eta_l = \frac{\gamma_l}{s_l^2}. \quad l = 1, 2, \dots, p \quad (15)$$

The viscoelastic material represented by Eqs. (12) and (14) has asymptotic elasticity as $E(0) = \kappa_0$ is finite, but generally it does not possess instant elasticity. If η_0 and β_0 vanish, however, $E(\infty) = \kappa_0 + \kappa_1 + \dots + \kappa_p$ is finite. Then, the material has also instant elasticity and qualifies as a solid [24].

It is noted that the points $\omega_1, \dots, \omega_n$ are strictly inside the analyticity domain of the function $E(\omega)$. This follows from Eq. (3) and makes the following approach robust compared to situations with data points on the boundary of the analyticity domain.

2.2 Implementation. From experiments, we obtain a finite set of angular frequencies $\omega_1, \dots, \omega_n$ and corresponding complex moduli E_1, \dots, E_n . By use of these experimental data we form the two matrices $M_{j,k}^{(1)}$ and $M_{j,k}^{(2)}$ given by the first equalities of Eqs. (8) and (9), respectively. These self-adjoint matrices are positive semi-definite if

and only if all their eigenvalues are non-negative. However, experiments commonly result in some slightly negative eigenvalues. In the experimental part of this paper, for example, the modulus of the smallest negative eigenvalue is typically a few tenths of a percent of the largest positive eigenvalue. A likely explanation for such small violations of the positive semi-definiteness is experimental noise. As advocated by Gu et al. [25] for a similar problem, the effects of such noise can be reduced by searching the smallest possible corrections of $\omega_1, \dots, \omega_n$ and E_1, \dots, E_n which restore the non-negativeness of all eigenvalues and establishing noise-corrected sets $\omega_1^{\text{corr}}, \dots, \omega_n^{\text{corr}}$ and $E_1^{\text{corr}}, \dots, E_n^{\text{corr}}$.

If at least one of the noise-corrected matrices $\mathbf{M}^{(1)\text{corr}}$ and $\mathbf{M}^{(2)\text{corr}}$ has a zero eigenvector, one forms the associated rational fraction (11) or (13) and finds its positive zeros. This is repeated for the set of independent eigenvectors, if any, corresponding to zero eigenvalues of both matrices. Then one keeps the common positive zeros s_1, \dots, s_p of all these rational fractions and obtains the model given by Eq. (12). In this model the p positive parameters s_1, \dots, s_p are known.

If the frequency range of interest does not extend far above that of the experimental data, $\alpha_0 > 0$, $\beta_0 \geq 0$ and the p non-negative parameters $\gamma_1, \gamma_2, \dots, \gamma_p$ are identified by a least square fit of the model to the noise-corrected data. If the material is required to possess instant elasticity, however, β_0 can be taken as zero while the remaining parameters are identified by a least square fit.

In this way, the method provides the structure, the number of elements and the parameters of the rheological model. Normally, the number of elements is found to be relatively low. We refer to [23] for an alternative method to complete the identification.

3 Impact Test Method

As stated in the Introduction, an experimental set of discrete angular frequencies and corresponding values of the complex modulus may be obtained with a variety of test methods, commercial as well as specialized and laboratory-specific. Here, as an example, they will be obtained by analysing the wave propagation in a Nylon bar specimen loaded through axial impact. The method is a slightly improved version of that used by Othman et al. [26].

3.1 Theory. Discrete values of the complex modulus $E(\omega) = E'(\omega) + iE''(\omega)$ will be obtained from the resonances of an impacted uniform bar specimen with density ρ and length l as shown in Fig. 2. At one end, $x = 0$, the bar is impacted axially by a striker that separates from the bar after the generation of a compressive primary pulse in the bar. The other end of the bar, $x = l$, is free. The strain $\varepsilon_b(t) = \varepsilon(b, t)$ is recorded at a distance a from the free end and b from the impacted end ($a + b = l$). The primary pulse should be shorter than $2a$ so that there is no overlap in the measured strain of this pulse and the first pulse reflected from the free end. However, it should be much longer than the diameter of the bar so that approximate 1D conditions prevail (wavelengths much longer than the diameter of the bar [27]).

In the frequency domain, the strain in the bar can be expressed as

$$\hat{\varepsilon}(x, \omega) = A(\omega)e^{-i\xi(\omega)x} + B(\omega)e^{i\xi(\omega)x}, \quad (16)$$

where

$$\xi^2(\omega) = \frac{\rho\omega^2}{E(\omega)}, \quad \xi(\omega) = k(\omega) - i\alpha(\omega). \quad (17)$$

Here, $\hat{\varepsilon}(x, \omega)$ is the Fourier transform of $\varepsilon(x, t)$, and $A(\omega)$ and $B(\omega)$ are complex amplitudes of waves travelling in the directions of increasing and decreasing x , respectively, $k(\omega)$ is the wave number and $\alpha(\omega)$ is the damping coefficient.

In order to determine an expression for the recorded strain $\hat{\varepsilon}_b^1(\omega) = \hat{\varepsilon}(b, \omega)$ associated with the primary pulse alone, the amplitudes A and B are first determined from Eq. (16) and the boundary conditions $\hat{\varepsilon}(0, \omega) = \hat{\varepsilon}_0(\omega)$ and $B(\omega) = 0$ for a semi-infinite bar $x \geq 0$, where $\hat{\varepsilon}_0(\omega)$ is the strain at the impacted end. With these amplitudes and $x = b$ inserted, Eq. (16) gives

$$\hat{\varepsilon}_b^1(\omega) = e^{-i\xi b} \hat{\varepsilon}_0(\omega). \quad (18)$$

The recorded strain $\hat{\varepsilon}_b^\infty(\omega) = \hat{\varepsilon}(b, \omega)$ associated with the complete train of pulses is determined similarly. First, the amplitudes A and B are determined from Eq. (16) and the boundary conditions $\hat{\varepsilon}(0, \omega) = \hat{\varepsilon}_0(\omega)$ and $\hat{\varepsilon}(l, \omega) = 0$ for the finite bar $0 \leq x \leq l$. With these amplitudes, and $x = b$ and $l - b = a$ inserted, Eq. (16) gives

$$\hat{\varepsilon}_b^\infty(\omega) = \frac{\sin(\xi a)}{\sin(\xi l)} \hat{\varepsilon}_0(\omega). \quad (19)$$

Dividing the members of Eq. (19) by those of Eq. (18) eliminates the strain $\hat{\varepsilon}_0(\omega)$ at the impacted end which normally cannot be measured. [This slightly improves the method previously used by Othman et al. \[26\].](#) Substituting ξ from the second of Eqs. (17) into the result, one gets the ratio $\hat{\varepsilon}_b^\infty(\omega)/\hat{\varepsilon}_b^1(\omega)$ which gives

$$\left|\hat{\varepsilon}_b^\infty(\omega)\right|^2 = \left|\hat{\varepsilon}_b^1(\omega)\right|^2 e^{2\alpha b} \frac{\sin^2(ka) + \sinh^2(\alpha a)}{\sin^2(kl) + \sinh^2(\alpha l)}. \quad (20)$$

Resonance occurs at the angular frequencies $\omega = \omega_m$, $m = 1, 2, \dots$ which correspond to the wave numbers, wavelengths and phase velocities

$$k = k_m = \frac{m\pi}{l}, \quad \lambda = \lambda_m = \frac{2\pi}{k_m} = \frac{2l}{m}, \quad c = c_m = \frac{\omega_m}{k_m} = \frac{\omega_m l}{m\pi}, \quad m = 1, 2, \dots \quad (21)$$

respectively.

It is assumed that within the m :th resonance peak $\alpha = \alpha_m \omega / \omega_m$ can be taken as directly proportional to angular frequency and $c(\omega) = \omega / k(\omega) = c_m$ can be taken as constant. By use of the third of Eqs. (21) we then obtain the relation $k(\omega) = k_m \omega / \omega_m$ between wave number and angular frequency within the resonance peak. Inserting these expressions for $\alpha(\omega)$ and $k(\omega)$ into Eq. (20) we get

$$\left|\hat{\varepsilon}_b^\infty(\omega)\right|^2 = \left|\hat{\varepsilon}_b^1(\omega)\right|^2 e^{2\alpha_m b \omega / \omega_m} \frac{\sin^2(k_m a \omega / \omega_m) + \sinh^2(\alpha_m a \omega / \omega_m)}{\sin^2(k_m l \omega / \omega_m) + \sinh^2(\alpha_m l \omega / \omega_m)}, \quad (22)$$

$$m = 1, 2, \dots$$

within the m :th resonance peak. In this relation, the spectra $|\hat{\varepsilon}_b^\infty(\omega)|^2$ and $|\hat{\varepsilon}_b^1(\omega)|^2$ can be determined experimentally.

For each resonance $m = 1, 2, \dots$, the resonance frequency ω_m and damping coefficient α_m can be estimated by minimizing the difference between the resonance peaks represented by the left and right members of Eq. (22). From ω_m and m , an experimental phase velocity c_m can be obtained by use of the third of Eqs. (21). Finally, by use of the dispersion relation (17) and the first of Eqs. (21), the complex modulus E_m at each resonance frequency can be obtained as

$$E_m = \rho \left(\frac{\omega_m}{\xi_m} \right)^2, \quad \xi_m = \frac{m\pi}{l} - i\alpha_m, \quad m = 1, 2, \dots \quad (23)$$

3.2 Experimental Set-up and Procedure. Impact tests were carried out with a Nylon bar specimen of length $l = 3\,045$ mm, diameter 10.2 mm, and density $1\,149$ kg/m³. Two pairs of strain gauges, one axial and one circumferential, were located at a distance of $a = 1\,731$ mm from the free end and $b = 1\,314$ mm from the impacted end. In order to minimise the effects of friction, the bar was suspended horizontally by means of nine regularly spaced strings with length 300 mm. With this arrangement, the period of oscillation of the system was about one second, which is much longer than the test duration. The striker had length 174 mm and the same diameter 10.2 mm and material as

the bar, and its impact velocity was 3.7 m/s. The strain was recorded with 500 kHz sampling frequency, and the signal vanished completely before the end of the recording window.

Results were evaluated up to 8 kHz. With a phase velocity expected to be higher than 1 500 m/s at this frequency, the shortest significant wave length was estimated to be greater than 0.19 m. This wave length is much larger than the diameter 0.01 m of the bar, which means that 3D effects can be neglected as assumed in Section 3.1.

4 Results and Discussion

The estimation method presented provides a model for the complex modulus corresponding to that shown in Fig. 1, with $p + 1$ pairs of springs and dashpots. This model, represented by Eq. (12) or (14), satisfies the constraints of causality, positivity of the dissipation rate and reality of the relaxation function. The quantity p , which determines the number $2(p + 1)$ of parameters of the rheological model, is obtained as the number of common positive zeros s_1, \dots, s_p of two or more rational functions established from the noise-corrected data. These zeros constitute the p parameters of Eq. (12) which determine the poles is_1, is_2, \dots, is_p of the complex modulus on the positive imaginary frequency axis.

Consider an ideal material which behaves exactly as the rheological model of Fig. 1 with $2(q + 1)$ elements, where q represents the complexity of the material behaviour, and let the number n of experimental values of the complex modulus be greater than q .

Then, in the absence of noise, the method can be shown to provide a model with $p = q$. If noise is added, the number of common positive zeros, and therefore the value of p , normally decreases. For a given material, therefore, lower quality of the experimental data normally results in a simpler but less accurate rheological model. Thus, for n sufficiently large, the level of refinement of the model is determined by the material behaviour and the quality of the experimental data.

The recorded strain is shown in Fig. 3. Figure 3(a) shows a long-time record, and Fig. 3(b) shows the primary compressive pulse followed by one tensile and one compressive pulse which have undergone one and two free-end reflections, respectively. As there is no significant overlap of these pulses, it was possible to compute the spectrum $|\hat{\epsilon}_b^1|^2$ in the right member of Eq. (30) from the measured primary pulse. The spectrum $|\hat{\epsilon}_b^\infty|$, computed from the long-time strain record, is shown in Fig. 4. The angular frequencies at resonance ω_m and the corresponding complex moduli E_m were determined as described. Figure 5 shows that there was good agreement between the resonance peaks determined from the left and right members of Eq. (30).

For the material of the Nylon bar specimen tested, a rheological model with $p = 6$ was obtained for $n = 29$. For this model, the 14 parameters of Eq. (12) are ($l = 1, 2, \dots, 6$)

$$s_l = 0.0954, 2.64, 5.67, 11.1, 19.4, 49.2 \text{ ks}^{-1}$$

$$\gamma_l = 98.0, 7.81, 79.7, 315, 1\,900, 1\,220 \text{ GPas}^{-1}$$

$$\alpha_0 = 3.26 \text{ GPa}, \beta_0 = 0.663 \text{ kPas},$$

and those of Eq. (14), representing the springs and dashpots in Fig. 1, are ($l = 0, 1, \dots, 6$)

$$\kappa_l = 2\,070, 1\,030, 2.96, 14.1, 28.5, 97.6, 24.8 \text{ MPa}$$

$$\eta_l = 0.663, 10\,800, 1.12, 2.48, 2.58, 5.02, 0.504 \text{ kPas.}$$

Figures 6 and 7 show three kinds of results for the frequency dependency of the phase velocity, the damping coefficient, and the real and imaginary parts of the complex modulus, viz., discrete experimental results, discrete noise-corrected results, and continuous results for the rheological model given by Eqs. (12) and (14) with the above sets of parameters. From the discrete experimental results for the phase velocity and the damping coefficient (open circles) shown in Fig. 6, the discrete experimental results for the complex modulus (open circles) in Fig. 7 were obtained as described in Section 3. The corresponding discrete noise-corrected results (filled circles) and the continuous results for the rheological model obtained as described in Section 2.2 are shown in the same figure.

While the experimental results are scattered due to noise, there is close agreement between the noise-corrected results and the smooth curves representing the rheological model. This indicates that the noise-correction was effective and that the rheological 14-parameter model obtained with $p = 6$ provides an adequate representation of the complex modulus in the frequency range of the test. Within this range, the real part of the complex modulus slowly increases from 3.09 to 3.24 GPa (5 %), while the imaginary part has a minimum 0.064 GPa at about 0.5 kHz and a maximum 0.090 GPa between 3 and 4 kHz.

The rheological model obtained by prescribing $\beta_0 = 0$ closely agreed with the noise-corrected results for the real part of the complex modulus but markedly disagreed with those for the imaginary part, especially at higher frequencies. Thus, although there is no instant elasticity with $\beta_0 > 0$, a finite positive value of this parameter was found to be important in the frequency range of the test.

At low frequencies, much below the range of the test, the rheological model cannot be expected to give a quantitatively accurate representation of the complex modulus. However, it is still interesting to note that at such frequencies the model predicts a rapid increase with frequency of the real part and a narrow maximum of the imaginary part of the complex modulus. This is explained by the closeness of the pole is_1 to the origin which at frequencies ω of the order of s_1 makes the first term of the sum in Eq. (12) much larger than the other terms of the sum. Qualitatively, the observed low-frequency behaviour is consistent with the results shown in Fig. 8 of servo-hydraulic tests which were carried out subsequently.

5 Conclusion

The estimation method of this paper has added some improvements to the identification of rheological models of the type shown in Fig. 1. First, the procedure for noise reduction is fully integrated in the method. Secondly, the method provides a rheological model with a number of elements that is in accordance with the complexity of the material behaviour and the quality of the experimental data. Thirdly, the parameters which determine the poles of the complex modulus on the positive imaginary frequency

axis are obtained as the common positive zeros of certain rational functions. Only the remaining parameters, on which the complex modulus has linear dependence, need to be identified by a least square fit.

Nomenclature

Latin

A	complex amplitude of wave travelling in direction of increasing x
a	distance from free end of bar specimen
a_k	element of eigenvector \mathbf{a} ($k = 1, \dots, n$)
\mathbf{a}	zero eigenvector of matrix $\mathbf{M}^{(1)}$
B	complex amplitude of wave travelling in direction of decreasing x
b	distance from impacted end of bar specimen
b_k	element of eigenvector \mathbf{b} ($k = 1, \dots, n$)
\mathbf{b}	zero eigenvector of matrix $\mathbf{M}^{(2)}$
c	phase velocity
E	complex modulus
f	function defined by Eq. (4), frequency
G	stress relaxation function
g	function defined by Eq. (6)
h	non-negative function defined on the positive real axis
k	wavenumber
l	length of bar specimen

M	matrix
$M_{j,k}$	element of matrix $\mathbf{M}(i, j = 1, \dots, n)$
n	number of pairs of angular frequency and complex modulus
p	number of positive zeros
s_l	model parameter ($l = 1, \dots, p$)
t	time
x	axial co-ordinate

Greek

α	damping coefficient
α_0	model parameter
β_0	model parameter
γ_l	model parameter ($l = 1, \dots, p$)
δ	delta function
ε	strain
η_l	viscosity model parameter ($l = 0, \dots, p$)
κ_l	stiffness model parameter ($l = 0, \dots, p$)
λ	wavelength
ξ	wave propagation coefficient defined by Eq. (17)
ρ	density of bar specimen
σ	stress
ω	angular frequency

Superscript

corr corrected with respect to noise

References

- [1] Duncan, J., 1999, "Dynamic Mechanical Analysis Techniques and Complex Modulus", in *Mechanical Properties and Testing of Polymers*, Ed. Swallowe, G. M., pp. 43-48, Kluwer, Dordrecht.
- [2] Garret, S. L., 1990, "Resonant Acoustic Determination of Elastic Moduli," *Journal of the Acoustical Society of America*, **88**(1), pp. 210-221.
- [3] Guo, Q., and Brown, D. A., 2000, "Determination of the Dynamic Elastic Moduli and Internal Friction Using Thin Rods," *Journal of the Acoustical Society of America*, **108**, pp. 167-174.
- [4] Madigowski, W. M., and Lee, G. F., 1983, "Improved Resonance Technique for Materials Characterization," *Journal of the Acoustical Society of America*, **73**(4), pp. 1374-1377.
- [5] Pintelon, R., Guillaume, P., Vanlanduit, S., De Belder, K., and Rolain, Y., 2004, "Identification of Young's Modulus from Broadband Modal Analysis Experiments," *Mechanical Systems and Signal Processing*, **18**, pp. 699-726.
- [6] Love, A. E. H., 1927, *A Treatise on the Mathematical Theory of Elasticity*, Cambridge University Press, London.

- [7] Blanc, R. H., 1971, “Détermination de l'Équation de Comportement des Corps Visco-élastiques Linéaires par une Méthode d'Impulsion,” Ph. D. thesis, l'Université d'Aix-Marseille.
- [8] Blanc, R. H., 1993, “Transient Wave Propagation Methods for Determining the Viscoelastic Properties of Solids,” *Journal of Applied Mechanics*, **60**, pp. 763-768.
- [9] Lundberg, B., and Blanc, R. H., 1988, “Determination of Mechanical Material Properties from the Two-point Response of an Impacted Linearly Viscoelastic Rod Specimen,” *Journal of Sound and Vibration*, **137**, pp. 483–493.
- [10] Lundberg, B., and Ödeen, S., 1993, “In Situ Determination of the Complex Modulus from Strain Measurements on an Impacted Structure,” *Journal of Sound and Vibration*, **167**, pp. 413-419.
- [11] Hillström, L., Mossberg, M., and Lundberg, B., 2000, “Identification of Complex Modulus from Measured Strains on an Axially Impacted Bar Using Least Squares,” *Journal of Sound and Vibration*, **230**, pp. 689–707.
- [12] Othman, R., 2002, “Extension du Champ d'Application du Système des Barres de Hopkinson aux Essais à Moyennes Vitesses de Déformation,” Ph. D. thesis, Ecole Polytechnique, Palaiseau.
- [13] Mousavi, S., Nicolas, D. F., and Lundberg, B., 2004, “Identification of Complex Moduli and Poisson's Ratio from Measured Strains on an Impacted Bar,” *Journal of Sound and Vibration*, **277**, pp. 971-986.
- [14] Zhao, H., and Gary, G., 1995, “A Three Dimensional Analytical Solution of Longitudinal Wave Propagation in an Infinite Linear Viscoelastic Cylindrical Bar. Application to Experimental Techniques,” *Journal of the Mechanics and Physics of Solids*, **43**, pp. 1335–1348.

- [15] Landau, L., and Lifchitz, E., 1960, *Electrodynamics of Continuous Media*, Pergamon Press, Oxford, New York.
- [16] Landau, L., and Lifchitz, E., 1980, *Statistical Physics*, Pergamon Press, Oxford, New York.
- [17] Hanyga, A., 2005, "Physically Acceptable Viscoelastic Models," in *Trends in Applications of Mathematics to Mechanics*, Eds. Wang, Y., and Hutter, K., Shaker Verlag, Aachen.
- [18] Mossberg, M., Hillström, L., and Söderström, T., 2001, "Non-parametric Identification of Viscoelastic Materials from Wave Propagation Experiments," *Automatica*, **37**(4), pp. 511-521.
- [19] Söderstrom, T., 2002, "System Identification Techniques for Estimating Material Functions from Wave Propagation Experiments," *Inverse Problems in Engineering*, **10**(5), pp. 413-439.
- [20] Golden, J., 2005, "A Proposal Concerning the Physical Rate of Dissipation in Materials with Memory," *Quarterly of Applied Mathematics*, **63**, pp. 117-155.
- [21] Bouleau, N., 1999, "Visco-élasticité et Processus de Levy," *Potential Analysis*, **11**, pp. 289-302.
- [22] Beris, A. N., and Edwards, B. J., 1994, *The Thermodynamics of Flowing Systems*, Oxford University Press, New York.
- [23] V Krein, M., and Nudelman, A., 1998, "An Interpolation Approach in the Class of Stieltjes Functions and Its Connection with Other Problems," *Integral Equations and Operator Theory*, **30**, pp. 251-278.
- [24] Flugge, W., 1975, *Viscoelasticity*, Springer-Verlag, Berlin/Heidelberg.

- [25] Gu, G., Xiong, D., and Zhou, K., 1993, “Identification in H_∞ using Pick's Interpolation,” *Systems & Control Letters*, **20**, pp. 263-272.
- [26] Othman, R., Blanc, R. H., Bussac, M. N., Collet, P., and Gary, G., 2002, “Identification de la Relation de la Dispersion dans les Barres,” *Comptes Rendus Mécanique*, **330**, pp. 849-855
- [27] Kolsky, H., 1963, *Stress Waves in Solids*, Clarendon Press, Oxford.

Captions

Fig. 1. Rheological model with $2(p+1)$ parameters.

Fig. 2. Impact test with a uniform viscoelastic bar specimen.

Fig. 3. Recorded strain in the Nylon bar specimen. (a) Long-time record of strain pulses $\varepsilon_b^\infty(t)$. (b) Primary strain pulse $\varepsilon_b^1(t)$ followed by strain pulses which have undergone one and two free-end reflections.

Fig. 4. Spectrum $|\hat{\varepsilon}_b^\infty|$ of the recorded strain in the Nylon bar specimen.

Fig. 5. Details of the spectrum $|\hat{\varepsilon}_b^\infty|^2$. The thin and thick curves are based on the left and the right member of Eq. (30), respectively. (a) 1st resonance peak, $n=1$. (b) 25th resonance peak, $n=25$.

Fig. 6. (a) Phase velocity c and (b) damping coefficient α versus frequency. Open circles: discrete experimental results. Continuous curves: results based on the rheological model given by Eqs. (12) and (14).

Fig. 7. (a) Real part E' and (b) imaginary part E'' of the complex modulus E versus frequency. Open circles: discrete experimental results. Filled circles: discrete noise-corrected results. Continuous curves: results obtained from the rheological model given by Eqs. (12) and (14).

Fig. 8. Real part E' and imaginary part E'' of the complex modulus E at low frequencies determined from servo-hydraulic tests.

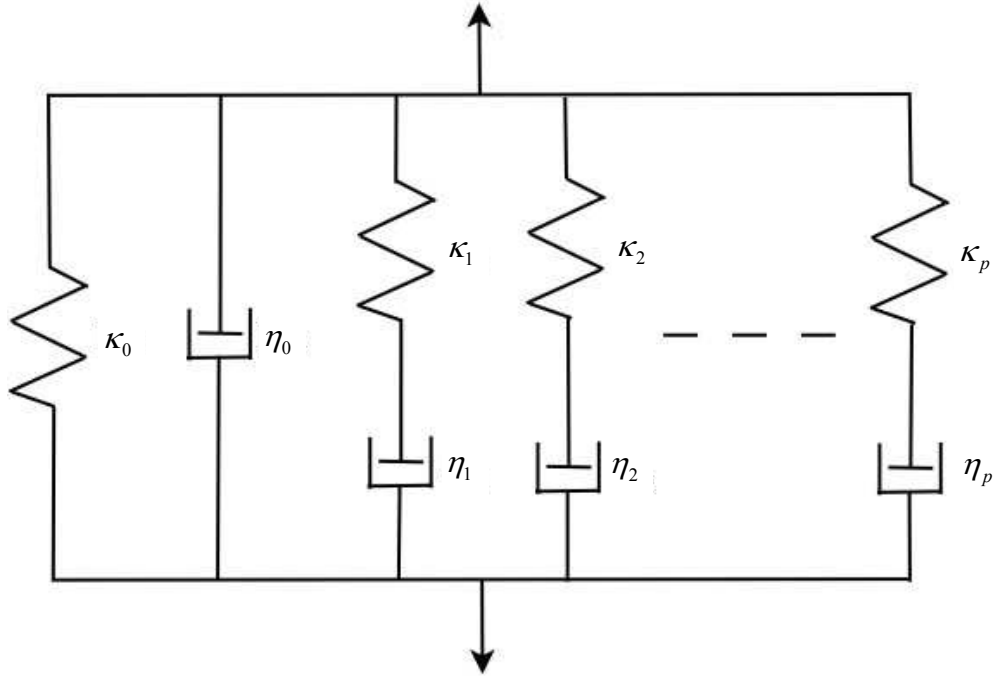


Fig. 1. Rheological model with $2(p + 1)$ parameters.

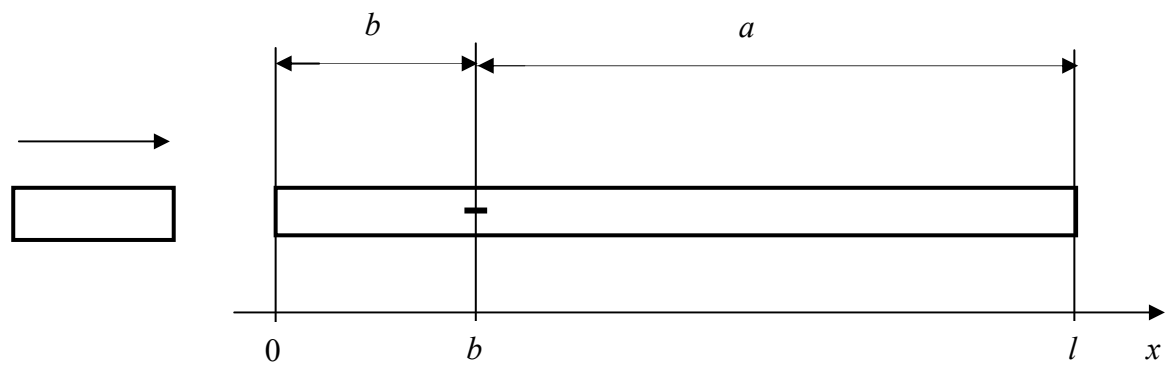


Fig. 2. Impact test with a uniform viscoelastic bar specimen.

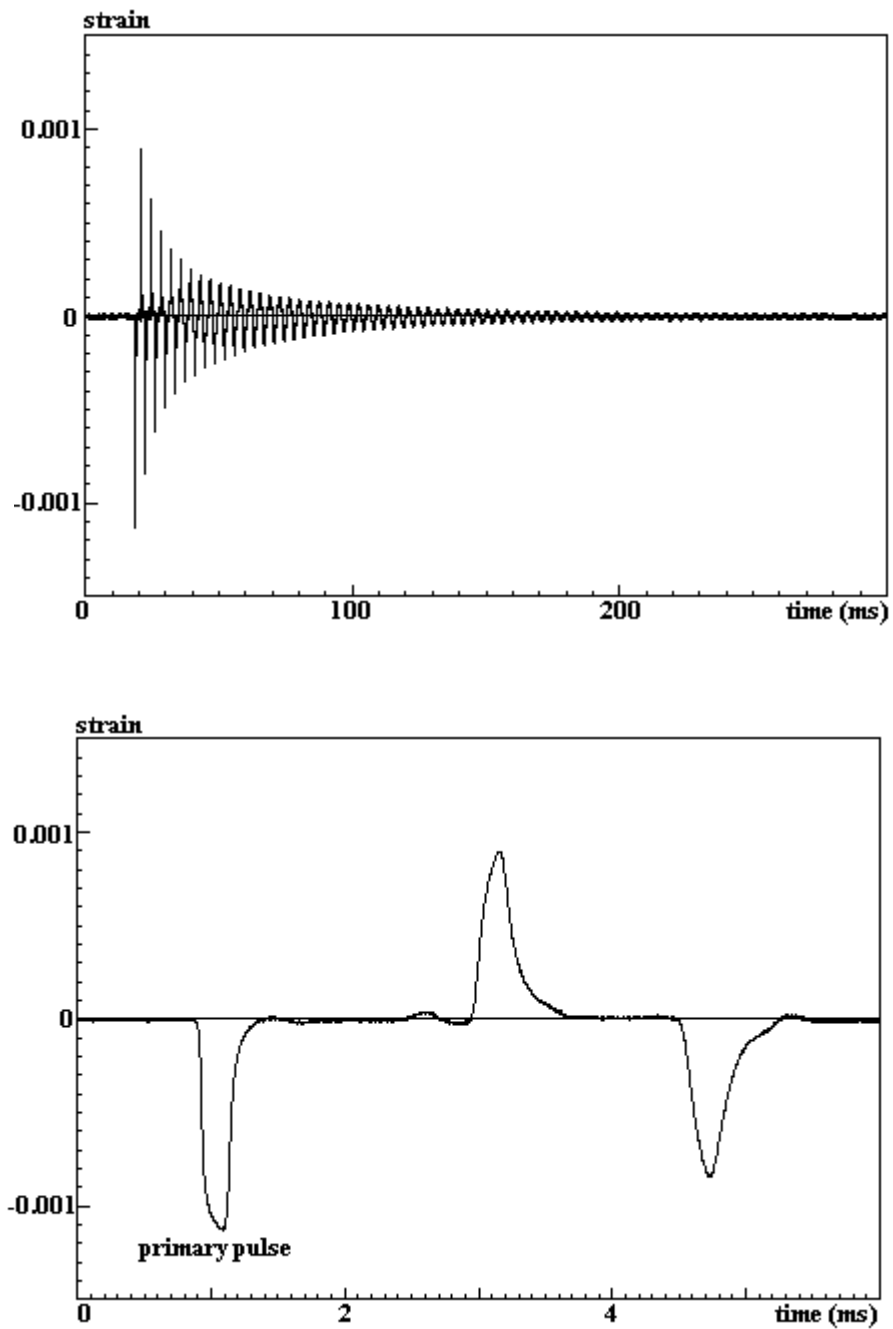


Fig. 3. Recorded strain in the Nylon bar specimen. (a) Long-time record of strain pulses $\varepsilon_b^\infty(t)$. (b) Primary strain pulse $\varepsilon_b^1(t)$ followed by strain pulses which have undergone one and two free-end reflections.

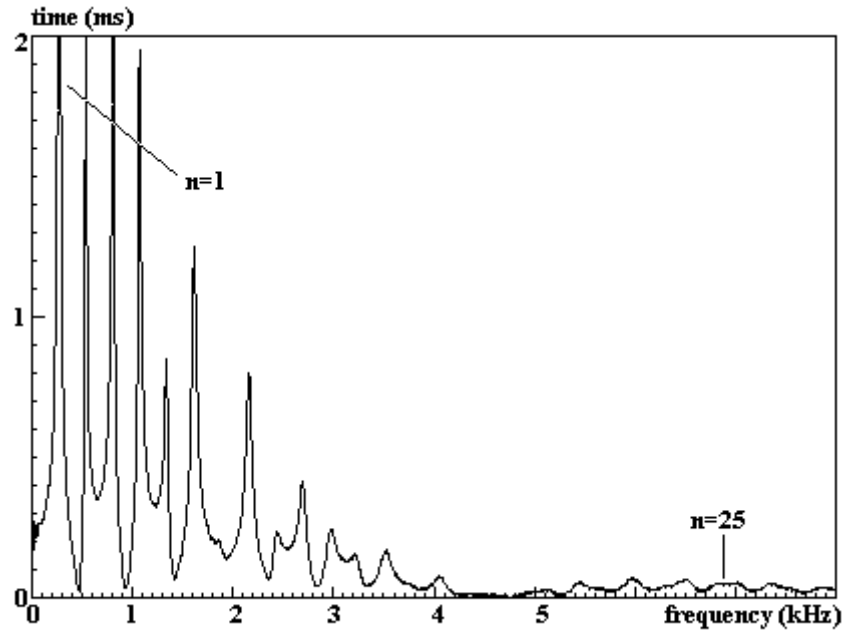


Fig. 4. Spectrum $|\hat{\epsilon}_b^\infty|$ of the recorded strain in the Nylon bar specimen.

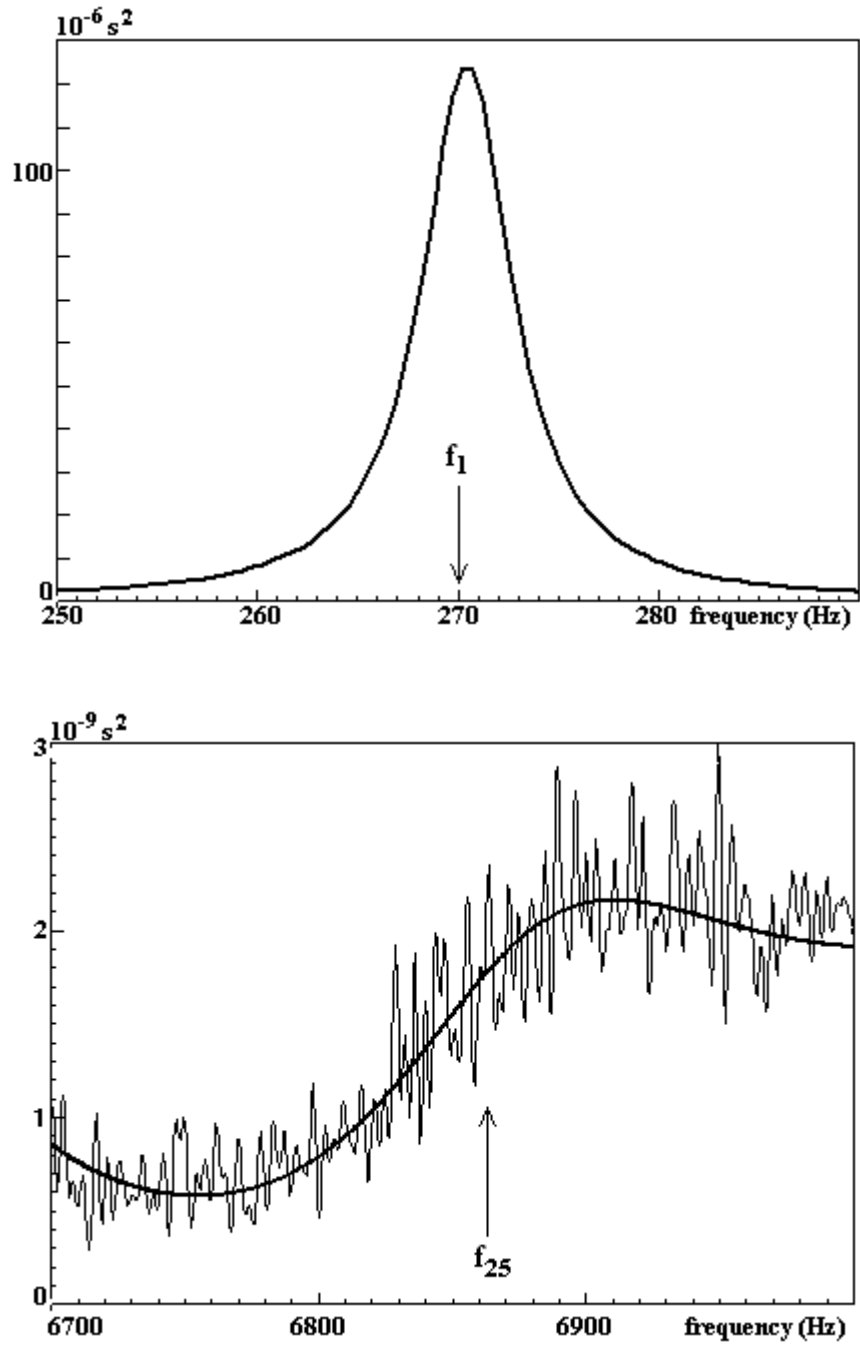


Fig. 5. Details of the spectrum $|\hat{\epsilon}_b^\infty|^2$. The thin and thick curves are based on the left and the right member of Eq. (30), respectively. (a) 1st resonance peak, $n = 1$. (b) 25th resonance peak, $n = 25$.

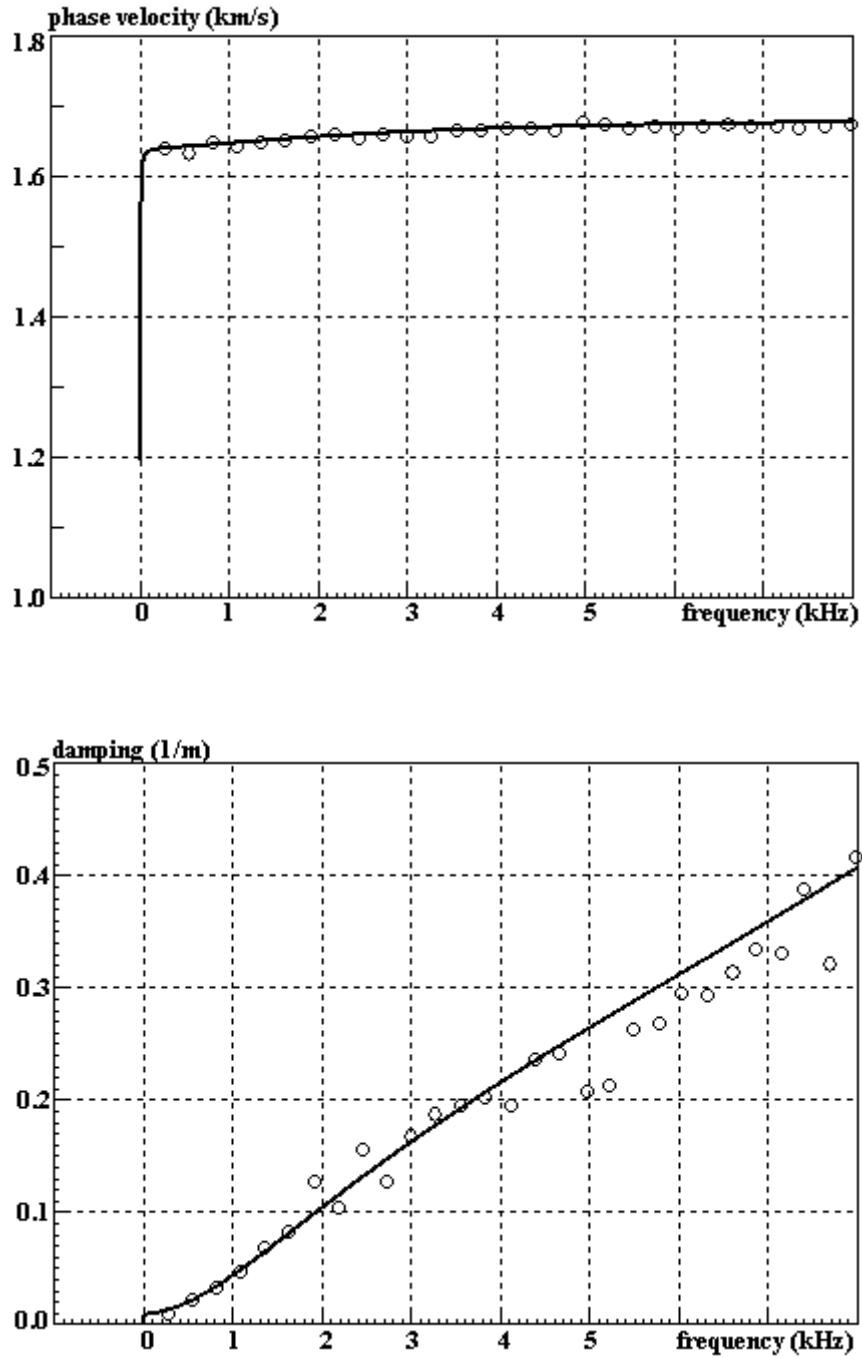


Fig. 6. (a) Phase velocity c and (b) damping coefficient α versus frequency. Open circles: discrete initial results. Continuous curves: results based on the rheological model given by Eqs. (12) and (14).

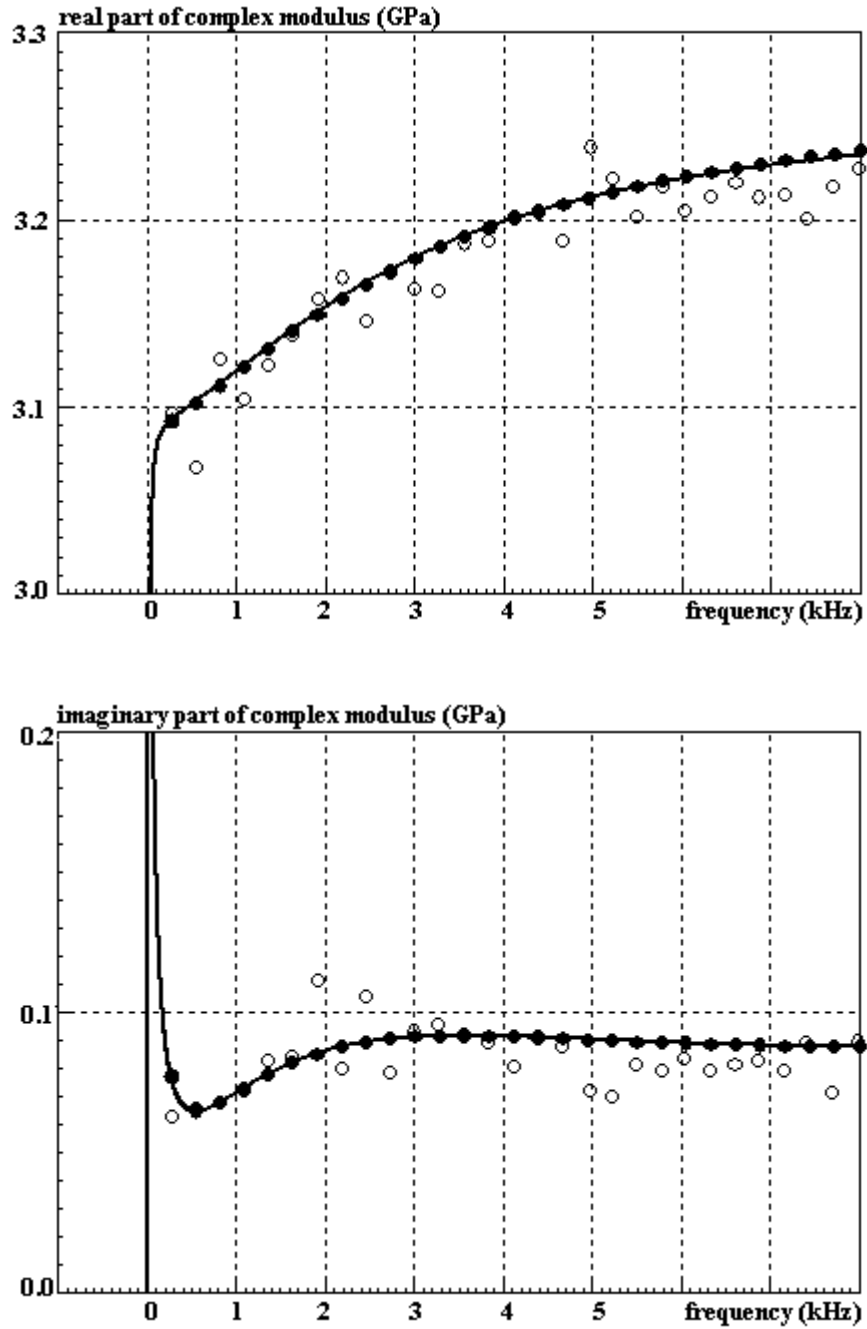


Fig. 7. (a) Real part E' and (b) imaginary part E'' of the complex modulus E versus frequency. Open circles: discrete initial results. Filled circles: discrete noise-corrected results. Continuous curves: results obtained from the rheological model given by Eqs. (12) and (14).

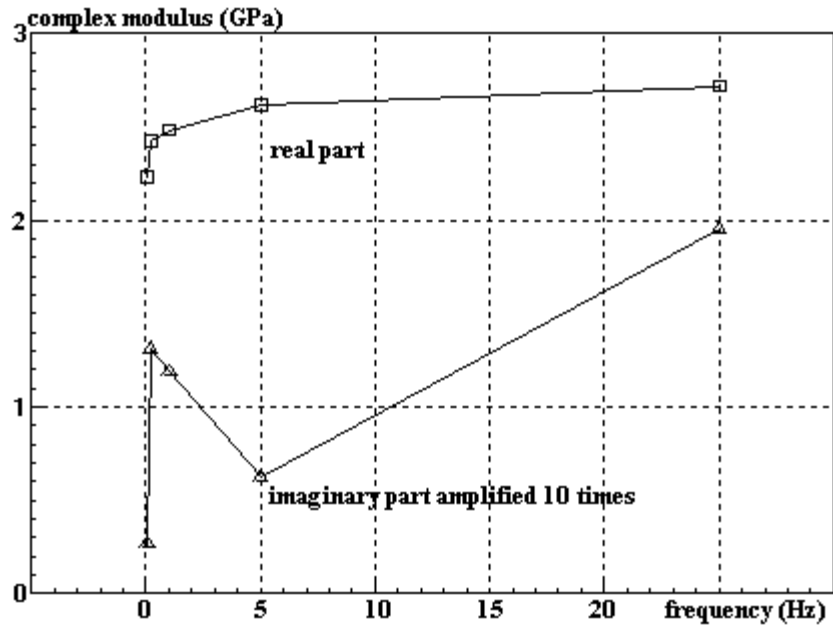


Fig. 8. Real part E' and imaginary part E'' of the complex modulus E at low frequencies determined from servo-hydraulic tests.