



HAL
open science

Identification of damaged zone in composite materials using displacement field measurements

Elodie Péronnet, Olivier Dalverny, Hélène Weleman, Sébastien Mistou

► **To cite this version:**

Elodie Péronnet, Olivier Dalverny, Hélène Weleman, Sébastien Mistou. Identification of damaged zone in composite materials using displacement field measurements. International conference on experimental mechanics ICEM 15, Jul 2012, Porto, Portugal. pp. 1-9. hal-00966496

HAL Id: hal-00966496

<https://hal.science/hal-00966496>

Submitted on 27 Mar 2014

HAL is a multi-disciplinary open access archive for the deposit and dissemination of scientific research documents, whether they are published or not. The documents may come from teaching and research institutions in France or abroad, or from public or private research centers.

L'archive ouverte pluridisciplinaire **HAL**, est destinée au dépôt et à la diffusion de documents scientifiques de niveau recherche, publiés ou non, émanant des établissements d'enseignement et de recherche français ou étrangers, des laboratoires publics ou privés.



Open Archive Toulouse Archive Ouverte (OATAO)

OATAO is an open access repository that collects the work of Toulouse researchers and makes it freely available over the web where possible.

This is an author-deposited version published in: <http://oatao.univ-toulouse.fr/>
Eprints ID: 8860

To cite this version:

Péronnet, Elodie and Dalverny, Olivier and Weleman, Hélène and Mistou, Sébastien *Identification of damaged zone in composite materials using displacement field measurements.* (2012) In: International conference on experimental mechanics ICEM 15, July 22-27, 2012., Porto (Portugal). (Unpublished)

Any correspondence concerning this service should be sent to the repository administrator: staff-oatao@listes-diff.inp-toulouse.fr

IDENTIFICATION OF DAMAGED ZONE IN COMPOSITE MATERIALS USING DISPLACEMENT FIELD MEASUREMENTS

Elodie Péronnet^{1(*)}, Olivier Dalverny², Hélène Weleman³, Sébastien Mistou⁴

^{1,2,3,4}PRES Université de Toulouse, INP, ENIT-LGP, Av. d'Azereix, BP1629, 65016 Tarbes Cedex, France.

¹DAHER SOCATA, Aéroport Tarbes-Lourdes, 65290 Louey, France.

(*)*Email*: elodie.peronnet@enit.fr

ABSTRACT

This work presents an identification strategy of local elastic properties of orthotropic carbon-epoxy laminates for aviation industry. Based on global and local stages of study, this methodology uses the Finite Element Model Updating (FEMU) method as identification technique with simulated kinematic fields corresponding to tensile test response. The aim of this paper is to predict the spatial variation of elastic plane properties and to deduce the localization of damaged zones.

Keywords: Identification strategy, Finite Element Model Updating method, orthotropic composite structure, virgin material properties, damaged zone localization

INTRODUCTION

One of the main challenges in composite design and development is to be able to compute the damage state at any point of a composite structure during a complex loading. In this context, the knowledge of the spatial distribution of the material properties provides a quantitative estimation of the damage level and localization. Generally, such investigation is made in the context of Non Destructive Testing (NDT) through experimental measurements of acoustic transmission or reflection ultrasound waves (Péronnet, 2012a; Garnier, 2011; Mouritz, 2000; Yashiro, 2007; Ledru, 2009; Boyer, 1993), square pulse or sinusoidal or pulse thermal waves (Péronnet, 2012b; Péronnet, 2011a; Guibert, 2007; Ibarra Castanedo, 2005; Choi, 2008) or densimetric fields (Péronnet, 2011b; Brault, 2011; Carmona, 2009; Schilling, 2005; Bayraktara, 2008).

The work presented here intends to access to such spatial distribution of properties through the analysis of kinematic fields and by means of the finite element model updating method. Such iterative technique has many interesting advantages for structural analysis and industrial requirements, including the numerical framework, the ability to explore complex shapes and loads and a treatment based on surface measurement without any assumption on volume distribution (Grédiac, 2004; Avril, 2008).

A number of studies have already been conducted in this sense for isotropic materials either with elastic or elasto-plastic behaviour (Fazzini, 2011; Claire, 2004; Avril, 2007; Crouzeix, 2008; Pannier, 2006) and elastic orthotropic materials (Lecompte, 2007; Leclerc, 2009; Rikards, 2001; Vautrin, 2009). Yet, all existing works investigate the case of media that are considered as macroscopically homogeneous (that is without any spatial variation of their macroscopic elastic properties). The main contribution of this paper is then to propose an extension of the FEMU identification method to the context of damaged orthotropic materials. Damage is associated here to internal defects inducing local degradation of the virgin material and leading to a spatial variation of the material elastic properties. Studied media can

accordingly be considered as macroscopically heterogeneous. The aim is to identify form kinematic fields the local orthotropic elastic properties, to deduce their spatial variation and then to determine the damaged zone within the material.

In a first step, the methodology is implemented for simulated kinematic fields in order to validate the procedure without any additional disturbance related to experimental acquisition. The composite structure including a defect is modeled by an association of two parts with different material properties (Fig. 1); the part 2 corresponds here to the “damaged” zone compared with the virgin material of part 1. To predict the spatial variation, the methodology adopted in the present study is based on global and local FEMU identification steps as described on Fig. 2. This paper intends to explain the two first steps involved in such methodology and to illustrate them on the case of orthotropic composites (carbon-epoxy laminates) for aviation with kinematic fields corresponding to tensile tests.

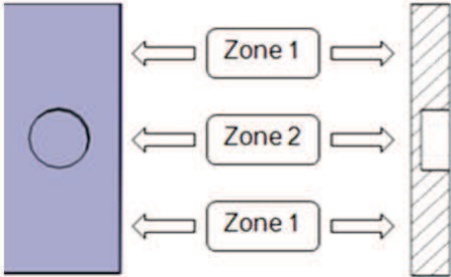


Fig. 1: Composite structure with two parts of different material properties

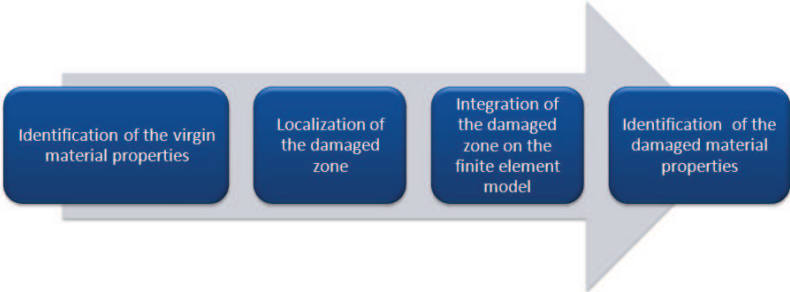


Fig. 2: Global and local identification procedure

IDENTIFICATION OF THE VIRGIN MATERIAL PROPERTIES

The FEMU identification technique implemented by M. Fazzini associates the Abaqus Finite Element (FE) code (Fazzini, 2011). The specific algorithm written in Python language follows the flowchart presented in Fig. 3. A particular attention has been paid to the matching of the kinematic fields grid and numerical one through the determination of neighboring points and interpolation functions. The cost function minimization is based on the Levenberg-Marquardt algorithm.

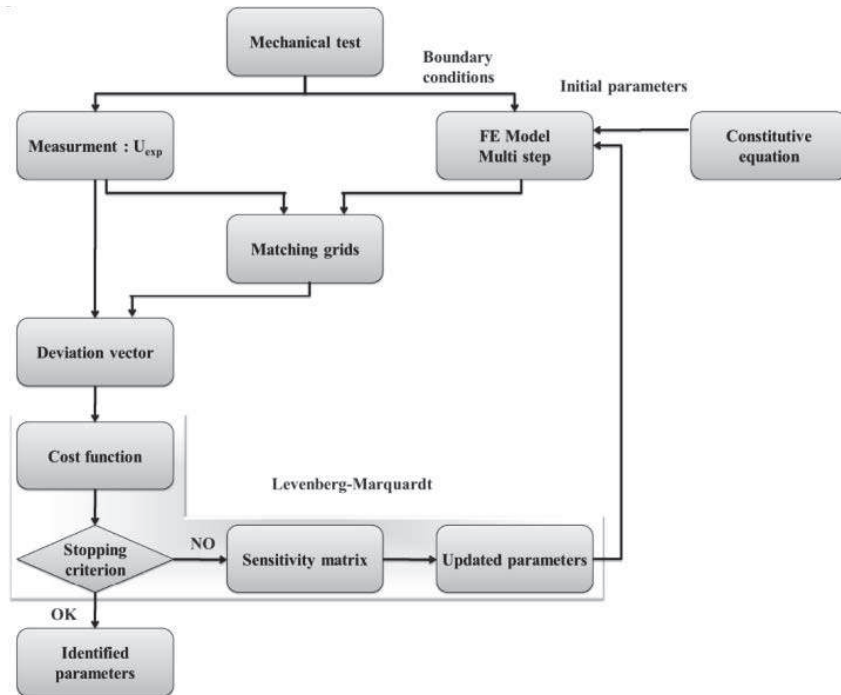


Fig. 3: Identification procedure based on FEMU technique (Fazzini, 2011)

Such procedure has been used for the identification of virgin properties of orthotropic carbon-epoxy laminates for aviation industry. Their four in-plane elastic properties have been determined by means of kinematic fields corresponding to an open-hole tensile test. Such mechanical solicitation generates a heterogeneous strain field localized near the hole that stimulates the whole strain components (Molimard, 2005).

The input data from which identification is done are the displacement fields on the specimen surface. In our case, these data are given by numerical simulation with Abaqus but are yet designed in what follows as “experimental” in order to clarify the link with classical application of FEMU method. Precisely, the numerical “experimental” model is a 3D laminated solid that allows a representation consistent with the real material structure. For such a representation, each ply is modeled with its material orientation and its material properties. On the other hand, the simulated model to be identified is a 3D homogeneous solid which allows to obtain the four in-plane global elastic properties of the composite structure. This global identification step is carried out on a 2000 points interest zone and follows the flowchart in Fig. 4.

Such methodology has been applied for a six plies ($[45/0/45]_s$) carbon-epoxy laminated composite structure in G0926/RTM6. It should be noted that the capability of the virgin material properties identification is validated for different configurations of the laminated composite (plies stacking and orientation, components properties) through a comparison with the Kirchhoff-Love theory. Stability and convergence of the algorithm are checked for each considered parameters (Péronnet, 2012c).

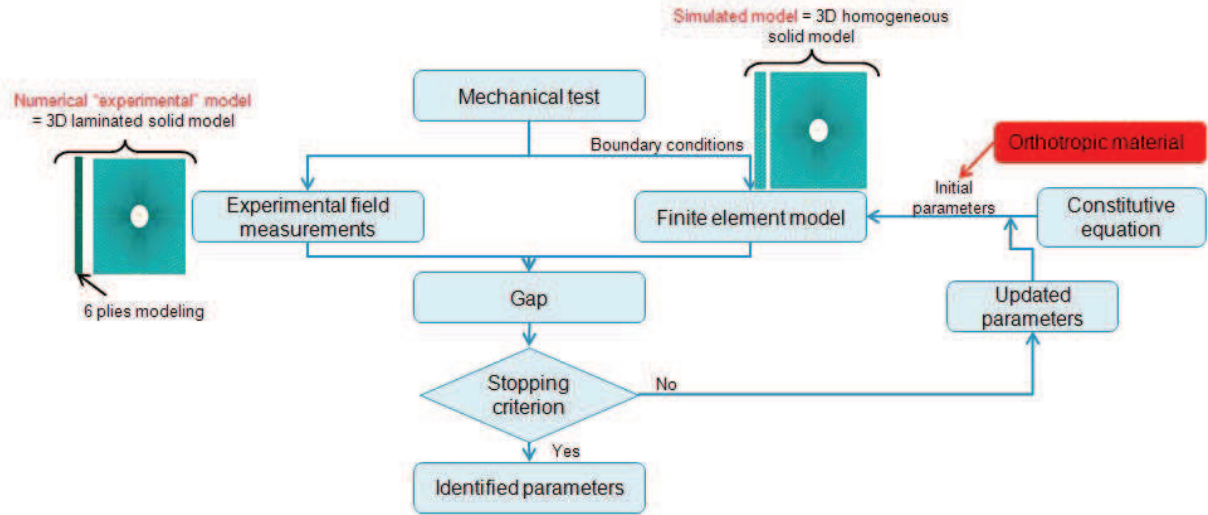


Fig. 4: Virgin material properties identification flowchart

Table 1: Calculated and identified virgin material properties for our composite plate

	E_1	E_2	G_{12}	ν_{12}
Parameters given by Kirchhoff-Love theory	37849 MPa	37849 MPa	21817 MPa	0.438
FEMU identified parameters	37131 MPa	37547 MPa	19874 MPa	0.44

LOCALIZATION OF THE DAMAGED ZONE

The localization of the damaged zone (step 2 in Fig. 2) is given by the calculated gap between the responses of the virgin material with constitutive parameters identified at the previous step (Fig. 5a) and the damaged structure including a virgin zone and a 6 mm diameter circular open-hole defect (Fig. 5b).

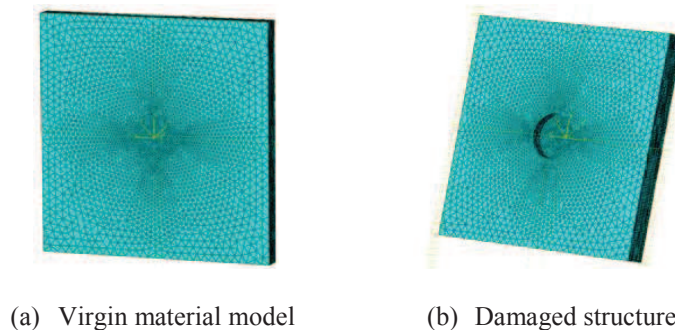


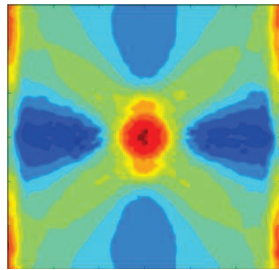
Fig. 5: Models for the damage zone localization

At this stage, the difficulty lies in the choice of the kind of mechanical response that provides the most relevant feature for the determination of the damaged zone shape. Following classical analyses on errors assessment, the Von Mises equivalent strain has been considered

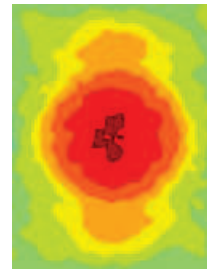
as the representative feature of each situation. A specific algorithm in Python language has been put in place to perform automatically the following steps:

- generate the virgin model and the damaged structure,
- launch the Abaqus job of each model and extract automatically the three in-plane components of strain fields (ϵ_{11} , ϵ_{22} , ϵ_{12}),
- compute in each point of their grid the equivalent Von Mises strain of both models,
- compute the gap between the two models by means of interpolation calculations in order to compare same geometrical points of the structure.

At the end, the equivalent strain error map is plotted (Fig. 6), showing a localized zone with highly different response that corresponds to the defect zone of Fig. 1.



(a) Global equivalent strain error map



(b) Local equivalent strain error map

Fig. 6: Equivalent strain error maps

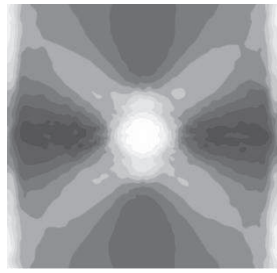
DIMENSION OF THE DAMAGED ZONE

From the local equivalent strain error map, an image processing developed by a specific application in GIMP (Ostertag, 2007) and Image J softwares (Ferreira, 2010) allows to describe precisely the damaged zone outline. This image processing is composed of three steps as illustrated in Fig. 7.



Fig. 7: Image processing procedure

The first step of the image processing consists in putting in grayscale the error map with GIMP software (Fig. 8). Such software allows indeed a grayscale representation with black and white extrema, which is of particular interest for this quantitative step.



(a) Global grayscale error map



(b) Local grayscale error map

Fig. 8: Grayscale error maps

From the local grayscale error map, a thresholding step is also achieved with GIMP in order to capture the damaged zone outline. This implies to affect the value 0 to the chosen thresholded range and the value 1 outside this range, and allows to display only a certain range of gray level.

The damaged zone shape is known as circular and the equivalent strain error map is derived from tensile test. Therefore during the thresholding step, a specific attention is given on two gray levels which are the one just before circular shape deformation and the other one with the first circular shape deformation (Fig. 8).



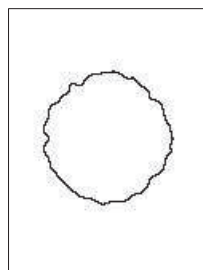
(a) Circular shape threshold



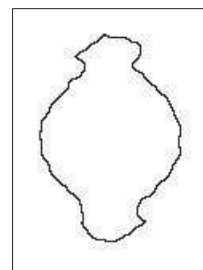
(b) Non circular shape threshold

Fig. 8: The two thresholding maps

From these thresholding maps, an image processing with Image J software has been developed in order to obtain automatically each shape outline (Fig. 9) together with each shape size (largest and smallest diameters).



(a) Circular shape outline



(b) Non circular shape outline

Fig. 9: The two outline maps

Table 2: Shape size dimensions

	Largest diameter	Smallest diameter	Average diameter
Circular shape size	5.32 mm	4.9 mm	5.11 mm
Non circular shape size	8.18 mm	5.36 mm	6.77 mm

Concerning the quantitative aspect, the size of the identified damaged zone corresponds with an error of 1% to the one of the defect introduced. Indeed, the mean diameter between the two shape average diameters is about 5.94 mm (for 6 mm in reality). This result should be taken sparingly as the capability of this image processing procedure will be validated on other case studies in order to prove its robustness. Nevertheless, as first result, it is interesting and hopeful.

CONCLUSION

This work lays the early stages of a new methodology for the identification of damaged zones within orthotropic composite materials from kinematic fields. The first step consists in the identification of the virgin material properties, namely for laminated composites of the four in-plane elastic properties, by means of the analysis of a 2000 points interest zone on a open-hole tensile specimen. The first results demonstrate a good agreement with classical laminates theory.

The second step deals with the localization of the damaged zone using the gap between the reference (virgin material) and the damaged structure responses. An automatic procedure based on image processing of the equivalent strain error map accounts for the localization and size of the damaged zone. Again, one obtains a good accuracy with the defect introduced in the structure for calculation.

This work needs now to be completed, especially the implementation of the identified damaged zone within the finite element model (step 3 of Fig. 2) and the identification of degraded properties (step 4 in Fig. 2). The latter should be achieved with the same procedure as for the virgin material. Many simulation cases will also be required in order to ensure the stability and consistency of the procedure. In a final stage, the methodology should be extended to kinematic fields derived from experimental tests.

REFERENCES

- Avril S., Bonnet M., Bretelle A.-S., Grédiac M., Hild F., Jenny P., Latourte F., Lemosse D., Pagano S., Pagnacco E., Pierron F., Overview of identification methods of mechanical parameters based on full-field measurements, *Experimental Mechanics*, 48, pp 381-402, 2008.
- Avril S., Pierron F., General framework for identification of constitutive parameters from full field measurements in linear elasticity, *International Journal of Solids and Structures*, 44, pp 4978-5002, 2007.
- Bayraktara E., Antolovich S. D., Bathias C., New developments in non-destructive controls of the composite materials and applications in manufacturing engineering, *Journal of materials processing technology*, 206, pp 30-44, 2008.

Boyer Y., Caractérisation de la porosité de composite carbone-résine minces par l'étude de la réflexion des ondes ultrasonores, Thèse de l'Université de Technologie de Compiègne, 1993.

Brault R., Germaneau A., Fazzini M., Doumalin P., Dupre J.C., Garnier C., Mistou S., Use of X-Ray tomography for composite materials analysis, ICSAAM2011, 2011.

Carmona V., Etude de l'endommagement de matériaux composites par tomographie X et émission acoustique, Thèse de l'Institut National des Sciences Appliquées de Lyon, 2009.

Choi M., Kang K., Park J., Kim W., Kim K., Quantitative determination of a subsurface defect of reference specimen by lock-in infrared thermography, NDT&E International, 41, pp 119-124, 2008.

Claire D., Hild F., Roux S., A finite element formulation to identify damage fields: The equilibrium gap, Int. J. Num. Meth. Engng., 61, Num. 2, pp 189-208, 2004.

Crouzeix L., Identification de champs de propriétés mécaniques de structures composites à partir de mesures de champs de déplacements, Thèse de l'Université Paul Sabatier, Toulouse III, 2008.

Fazzini M., Dalverny O. and Mistou S., Identification of materials properties using displacement field measurement, Key Engineering Materials, 482, pp 57-65, 2011.

Ferreira T.A. et Rasband W.: The Image J user guide. Rapport technique, <http://rsbweb.nih.gov/ij/>, 2010.

Garnier C., Pastor M.L., Eyma F. and Lorrain B., The detection of aeronautical defects in-situ on composite structures using non destructive testing, Composite Structures, 93, pp 1328-1336, 2011.

Grédiac M., The full-field measurement methods in composite material characterization: interest and limitations, Composites: Part A, 35, pp 751-761, 2004.

Guibert S., La Thermographie Infrarouge à détection synchrone appliquée aux matériaux composites, Thèse de l'Université de Laval (Québec), 2007.

Ibarra Castanedo C., Quantitative subsurface defect evaluation by pulsed thermography : depth retrieval with the phase, Thèse de l'Université de Laval (Québec), 2005.

Leclerc H., Perie J.N., Hild F., Roux S., Corrélation d'Images Numériques Intégrée pour l'identification de propriétés mécaniques, 19^{ème} Congrès Français de Mécanique, Marseille, 2009.

Lecompte D., Elastic and Elasto-Plastic Material Parameter Identification by Inverse Modeling of Static Tests using Digital Image Correlation, Thesis of university of Brussel, 2007.

Ledru Y., Etude de la porosité dans les matériaux composites stratifiés aéronautique, Thèse de l'Université de Toulouse, 2009.

Molimard J., Le Riche R., Vautrin A., Lee J. R., Identification of the four orthotropic plate stiffnesses using a single open-hole tensile test, Experimental Mechanics, 45, no. 5, pp 404-411, 2005.

Mouritz A.P., Townsend C., Shah Khan M.Z., Non-destructive detection of fatigue damage in thick composites by pulse-echo ultrasonics, Composites Science and Technology, 60, pp 23-32, 2000.

R. Ostertag, J. Hardelin, C. Gémy, S. Barre, E. Lamarque, K. Delvare, GNU Image Manipulation Program Guide Utilisateur, 2007.

Pannier Y., Identification de paramètres élastoplastiques par des essais statiquement indéterminés : mise en oeuvre expérimentale et validation de la méthode des champs virtuels, Thèse de l'Ecole Nationale Supérieure d'Arts et Métiers, Centre de Châlons-en-Champagne, 2006.

Péronnet E., Eyma F., Pastor M.-L., Weleman H., Caractérisation et comparaison des limites de détection de techniques de contrôle non destructif : méthodes ultrasonores et méthodes optiques, *Revue Contrôles Essais Mesures*, 2011 (a).

Péronnet E., Mistou S., Brault R., Garnier C. and Fazzini M.; X-Ray tomography for composite parts design, *Conférence FVR2011*, 2011 (b).

Péronnet E., Eyma F., Weleman H. and Mistou S., Characterization and Comparison of Defects Detection Limits of Ultrasonic Non Destructive Techniques, *Key Engineering Materials*, 498, pp79-88, 2012 (a).

Péronnet E., Pastor M.-L., Huillery R., Dalverny O., Mistou S., Weleman H., Non destructive investigation of defects in composite structures by three infrared thermographic techniques, *ICEM15*, 2012 (b).

Péronnet E., Dalverny O., Weleman H., Mistou S., Identification of orthotropic material properties using displacement field measurements, *ESMC2012*, 2012 (c).

Rikards R., Chate A., Gailis G., Identification of elastic properties of laminates based on experiment design, *International Journal of Solids and Structures*, 38, pp 5097-5115, 2001.

Schilling P. J., Karedla B. R., Tatiparthi A. K., Verges M. A., Herrington P. D., X-ray computed microtomography of internal damage in fiber reinforced polymer matrix composites, *Composites Science and Technology*, 65, pp 2071-2078, 2005.

Vautrin A., Silva G., Molimard J., Le Riche R., Localisation et identification de l'hétérogénéité de comportement mécanique de matériaux, 19^{ème} Congrès Français de Mécanique, Marseille, 2009.

Yashiro S., Takatsubo J., Toyama N., An NDT technique for composite structures using visualized Lamb-wave propagation, *Composites Science and Technology*, 67, pp 3202-3208, 2007.