



HAL
open science

Quantum critical point and superconducting dome in the pressure phase diagram of o-TaS₃

M. Monteverde, Jose Lorenzana, Pierre Monceau, Manuel Nunez-Regueiro

► **To cite this version:**

M. Monteverde, Jose Lorenzana, Pierre Monceau, Manuel Nunez-Regueiro. Quantum critical point and superconducting dome in the pressure phase diagram of o-TaS₃. *Physical Review B: Condensed Matter and Materials Physics* (1998-2015), 2013, 88 (18), pp.180504(R). 10.1103/PhysRevB.88.180504 . hal-00966284

HAL Id: hal-00966284

<https://hal.science/hal-00966284>

Submitted on 29 May 2014

HAL is a multi-disciplinary open access archive for the deposit and dissemination of scientific research documents, whether they are published or not. The documents may come from teaching and research institutions in France or abroad, or from public or private research centers.

L'archive ouverte pluridisciplinaire **HAL**, est destinée au dépôt et à la diffusion de documents scientifiques de niveau recherche, publiés ou non, émanant des établissements d'enseignement et de recherche français ou étrangers, des laboratoires publics ou privés.



Quantum critical point and superconducting dome in the pressure phase diagram of *o*-TaS₃

M. Monteverde,^{1,*} J. Lorenzana,² P. Monceau,¹ and M. Núñez-Regueiro¹

¹*Institut Néel, Université Grenoble Alpes and Centre Nationale de la Recherche Scientifique, Grenoble, France*

²*ISC-CNR, Dipartimento di Fisica, Sapienza, Università di Roma, Piazzale Aldo Moro 5, 00185 Roma, Italy*

(Received 18 September 2013; revised manuscript received 10 October 2013; published 7 November 2013)

We measure the electrical resistance of *o*-TaS₃ between 1 and 300 K under pressures up to 20 GPa. We observe a gradual decrease of the charge density wave transition temperature T_{CDW} with increasing pressure P following a mean field quantum fluctuation power law $T_{\text{CDW}} = 215 \text{ K}[(P_C - P)/P_C]^\gamma$ with a quantum critical point at a pressure $P_C = 11.5 \text{ GPa}$ and $\gamma \approx 0.5$. Around the quantum critical point (QCP) we observe a superconducting dome with a maximum superconducting transition temperature $T_c = 3.1 \text{ K}$. Such dome is similar to superconducting domes around other types of order suggesting that the QCP is directly responsible for the enhancement of superconductivity through a universal mechanism still not well understood.

DOI: [10.1103/PhysRevB.88.180504](https://doi.org/10.1103/PhysRevB.88.180504)

PACS number(s): 72.80.Ga, 64.60.F-, 62.50.-p

Linear transition-metal chalcogenides have been thoroughly studied due to their one-dimensional (1D) character. When metallic, the electronic bands yield almost flat Fermi surfaces (FS) that are prone to produce divergences in the Lindhard susceptibility at a wave vector $Q = 2k_F$ resulting in large electron-phonon coupling. Below a certain temperature, $T_{\text{CDW}} = 215 \text{ K}$, a charge density wave (CDW) develops, accompanied by a permanent distortion of the lattice at the same wave vector.¹ At the same time a BCS-type gap develops on a large portion of the FS. Application of pressure enhances the hopping amplitude perpendicular to the chains, thus reducing the nesting,² and hardens the phonon energy. As a result the CDW gets destabilized, gradually reducing its transition temperature. At some point, enough of the gapped FS occupied by the CDW is freed from its gap. In the simplest scenario the ungapped FS takes advantage of the electron-phonon coupling to develop a superconducting state^{3,4} below a transition temperature T_c . Several linear chalcogenides, NbSe₃, (TaS₄)₂I, *m*-TaS₃, and *o*-TaS₃, have been studied and the existing measurements all follow the above-mentioned description.⁵

In recent years, interest has grown on what are called quantum phase transitions, i.e., phase transitions, from an ordered (e.g., ferromagnetic) to a disordered (e.g., paramagnetic), at $T = 0$ driven by an external parameter such as pressure. A huge amount of work has been done on heavy fermions, which normally have low ordering energy scales.^{6,7} It has been found experimentally that these materials also show superconductivity when the ordering transition temperature is sufficiently depressed. Moreover, superconductivity very often develops below a dome centered at the quantum critical point (QCP), i.e., the point where the ordering temperature becomes zero. The ubiquity of superconducting domes around QCPs suggests that QCPs play an important role in promoting superconductivity. Otherwise it would not be clear why domes tend to be symmetrical around QCPs with superconductivity weakening at both sides of the QCP. One view⁸ is that the effective quasiparticle interaction becomes enhanced close to a QCP. A more recent proposal⁹ is based on the idea that a QCP is a degenerate state of matter with a residual entropy which quantum mechanics, in one way or another, will get rid of. Superconductivity appears as a natural candidate to quench

the residual zero temperature entropy as it does not need special features such as nesting. Thus what makes QCPs special may not be an enhanced pairing interaction, but an enhanced pairing susceptibility close to a QCP.⁹ The physics of QCP has been invoked to explain high- T_c superconductivity in cuprates^{8,10–13} even though a clear ordering under the superconducting dome has not yet been identified. One possibility is that the order is of the CDW type,⁸ thus it is of great interest to find other examples where superconductivity is found around charge order to provide model systems to study this interplay and challenge theories.

Whatever the correct explanation of the relation between QCP and superconductivity is, it is important to determine the exact dependence of T_{CDW} with pressure, as the exponent of the observed power laws allows comparison with current theories.¹⁴ Within this scope we have revisited the linear system *o*-TaS₃ in order to analyze in detail its pressure QCP, as previous work does not allow a precise determination of the power laws nor is unambiguous with respect to the coexistence of the CDW with superconductivity.

The electrical resistance measurements were performed using a Keithley 220 source and a Keithley 2182 nanovoltmeter. Pressure measurements, 1.4–22 GPa (between 4.2 and 300 K), were done in a sintered diamond Bridgman anvil apparatus using a pyrophyllite gasket and two steatite disks as the pressure medium.¹⁵ Due to the solid state pressure medium, measurements can only be performed on compression. The *o*-TaS₃ samples are filamentary monocrystals from the same batch as those of Ref. 16, synthesized by H. Berger and loaned by F. Lévy, both from EPFL, Switzerland.

The structure of orthorhombic *o*-TaS₃ is still unknown. The lattice parameters are very large in the directions perpendicular to the chain direction c axis, namely, $a = 36.804 \text{ \AA}$, $b = 15.173 \text{ \AA}$, and $c = 3.34 \text{ \AA}$, and may indicate that it comprises 6×4 chains parallel to the c axis. A single CDW transition develops¹⁷ at $T_{\text{CDW}} = 215 \text{ K}$ with a CDW vector that is temperature dependent; its components¹⁸ below T_{CDW} are found [127] to be $[0.5a^*, (0.125 - \varepsilon)b^*, 0.255c^*]$.

We show in Fig. 1 the electrical resistivity as a function of temperature for different pressures. As expected, pressure destabilizes the CDW state, and the sample passes gradually from a semiconducting to a metallic ground state. Furthermore,

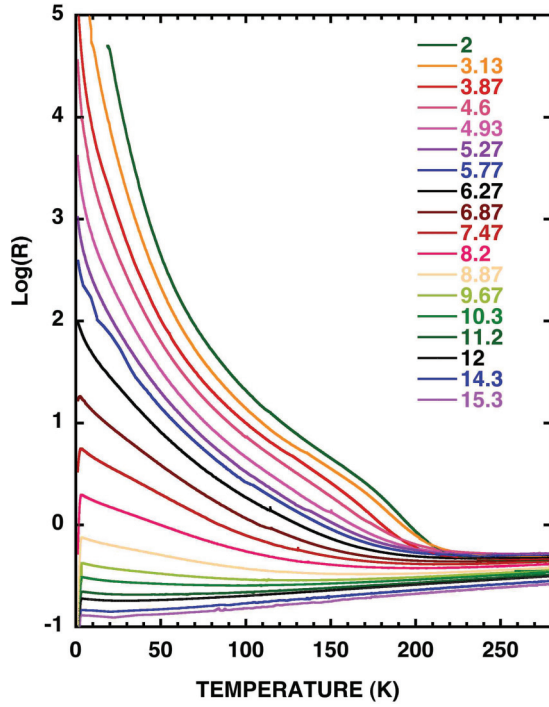


FIG. 1. (Color online) Logarithm of the electrical resistivity of *o*-TaS₃ as a function of temperature for different pressures. The passage from a semiconducting low temperature ground state towards a metallic and superconducting state is apparent.

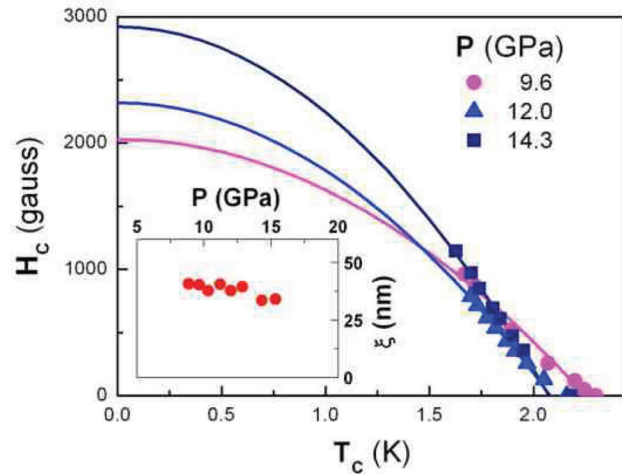
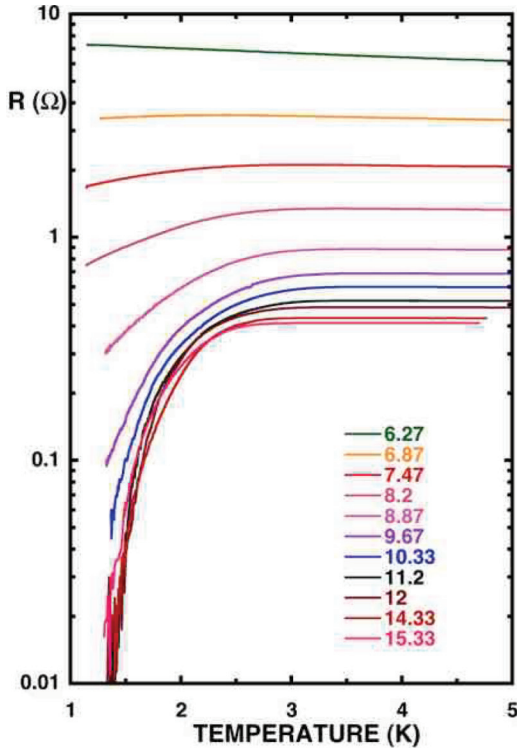


FIG. 2. (Color online) Left panel: Low temperature zoom of the logarithm of the electrical resistivity of *o*-TaS₃ for different pressures, showing the transitions to a superconducting state. Right panel: Dependence with temperature of the critical magnetic field (for clarity only three pressures are shown). The continuous curves are fit to the data according to expression (1). Inset: Correlation length as a function of pressure obtained from the critical magnetic field of each pressure.

above ~ 8 GPa the sample shows superconductivity, whose onset increases up to a maximum of ~ 3.3 K at the pressure where the CDW disappears altogether (Fig. 2).

We have measured the critical magnetic field of the superconducting state at different temperatures. The critical magnetic field at zero temperature $H_C(0, P)$ can then be calculated at each pressure by fitting the expression:

$$H_C(T, P) = H_C(0, P) \left[1 - \left(\frac{T}{T_C(P)} \right)^2 \right]. \quad (1)$$

The pressure dependence of the correlation length can be obtained from the Ginzburg-Landau expression:

$$\xi(P) = \left(\frac{\phi_0}{2\pi H_C(0, P)} \right)^{1/2}, \quad (2)$$

where ϕ_0 is the magnetic flux quantum. No significant variation is observed on the correlation length as a function of pressure (inset in Fig. 2 right panel).

The transition temperature to the CDW state T_{CDW} can be determined by the logarithmic derivative $d \log R / dT$. However, we have observed that the same derivative but with respect to the inverse temperature $d \log(R) / d(1/T)$ is a more sensitive method that allows one to follow T_{CDW} down to stronger pressures, while coinciding with the other definition at lower pressures. We have thus adopted this method (Fig. 3).

In Fig. 4 we show the measured pressure phase diagram of *o*-TaS₃. We compare our results to older measurements with a good agreement between them. However, we are now able to

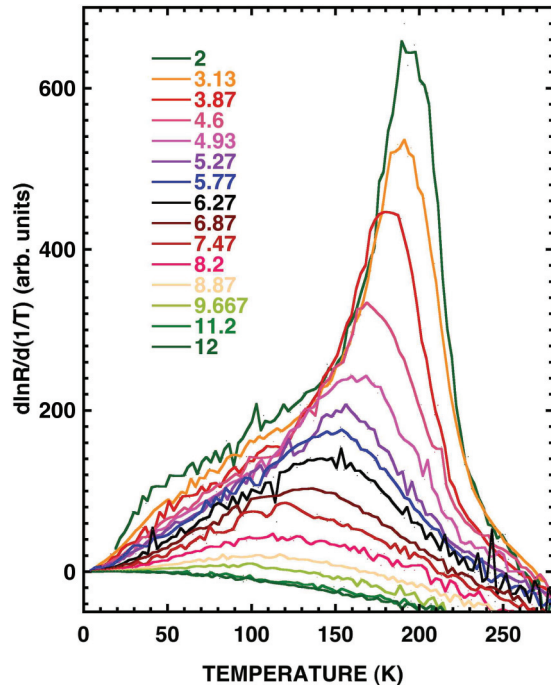


FIG. 3. (Color online) The logarithmic derivative of the electrical resistivity with respect to the inverse temperature $d \log(R)/d(1/T)$ for different pressures. This is the most sensitive method to follow the evolution of the CDW transition with pressure. It is defined by the temperature that corresponds to the maximum in each curve.

determine precisely the pressure dependence of T_{CDW} . Astonishingly, in all the pressure range, it follows a mean field quantum fluctuation power law $T_{CDW} = 215 \text{ K}[(P_C - P)/P_C]^\gamma$ with a critical pressure $P_C = 11.5 \text{ GPa}$ and $\gamma = 0.5$. This is unexpected, as for NbSe_3 , a compound of the same 1D transition-metal trichalcogenide family but with a simpler structure, according to the reported results,^{19–21} pressure yields first an exponential decrease that, only when T_{CDW} becomes small enough, changes towards a $\gamma = 0.5$ power law. The exponential decrease is expected due to the BCS dependence¹ of $T_{CDW} = 5.43 T_F \exp[-\omega_q/g^2 N(E_F)]$, where T_F is the Fermi energy, ω_q is the frequency of the phonon that stabilizes the CDW, g is the coupling parameter, and $N(E_F)$ is the density of states at the Fermi level. The most important variation will be given by the exponential, where ω_q will obviously increase with pressure, while $N(E_F)$ is expected to decrease at the same time as should g . Supposing a linear variation of these parameters, we would expect an exponential decrease with pressure of T_{CDW} until we are sufficiently near to the QCP, where fluctuations take over in the form of a power law $T_{CDW} \propto [(P_C - P)/P_C]^{0.5}$. This is the type of behavior observed in NbSe_3 and that has also been studied in detail in Cr metal,²² whose known itinerant antiferromagnetism is due to a BCS type of spin density wave. According to common belief the expectation for the dependence of T_{CDW} with pressure

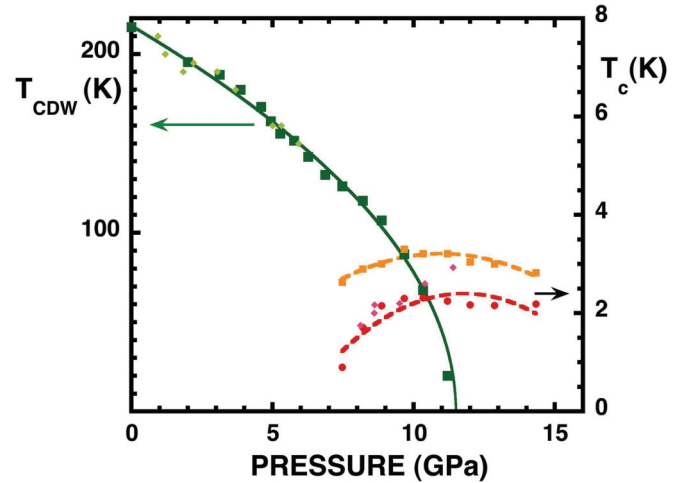


FIG. 4. (Color online) Pressure phase diagram of $o\text{-TaS}_3$. T_{CDW} 's (T_c 's) obtained in this work are shown as green squares (orange squares for the onset and red circles for 50% of the superconducting transition) together with previous reports (Ref. 5) (diamonds). We see that there is good agreement between both measurements. T_{CDW} follows a mean field power law $T_{CDW} \propto [(P_C - P)/P_C]^{0.5}$. Within our limited low temperature range, superconductivity appears within a dome surrounding the QCP, and coexists with the CDW below P_c .

is an exponential decrease with pressure characteristic of a weak coupling BCS state, followed at sufficiently low transition temperatures by a power law decrease due to quantum fluctuations. $o\text{-TaS}_3$ thus seems to be anomalous, without regime of exponential pressure dependence, in spite of a high CDW transition temperature. Apparently quantum fluctuations control in the same unexpected way the variation with pressure of T_{CDW} far away from the QCP.

Another important point of our measurements is the superconducting dome that we observe around the QCP within our error bars. In the field of heavy fermions, much discussion has been developed around the question if superconductivity is due to the quantum critical point. The carriers would forestall the intense critical fluctuations of the quantum critical point by reorganizing themselves into a new stable phase of matter, i.e., superconductivity.^{23,24} However, in the CDW case, it is natural to expect the appearance of superconductivity as the CDW disappears, as given by the Bilbro-McMillan³ formula $T_{CDW}^{1-n} T_c^n = T_{c0}$, where n is the superconducting fraction of the Fermi surface and T_{c0} is the superconducting transition temperature without CDW. However, this formula, which does not predict a superconducting dome, is obtained considering that BCS controls the evolution of both transition temperatures. We have seen that for $o\text{-TaS}_3$, in the entire phase diagram, and for NbSe_3 near the QCP, fluctuations control T_{CDW} . Thus it is clear that new theoretical ideas which could lead to a superconducting dome⁹ are most welcome as well as further theoretical and experimental studies which could assert their applicability to CDW systems.

*Present address: Laboratoire de Physique des Solides, Université de Paris-Sud, Orsay, France.

¹P. Monceau, *Adv. Phys.* **61**, 325 (2012).

²Yu A. Firsov, V. N. Prigodin, and Chr Seidel, *Phys. Rep.* **126**, 245 (1985).

³G. Bilbro and W. L. McMillan, *Phys. Rev. B* **14**, 1887 (1976).

- ⁴C. A. Balseiro and L. M. Falicov, *Phys. Rev. B* **20**, 4457 (1979).
- ⁵M. Núñez-Regueiro, J.-M. Mignot, M. Jaime, D. Castello, and P. Monceau, *Synth. Met.* **56**, 2653 (1993).
- ⁶H. von Löhneysen, A. Rosch, M. Vojta, and P. Wölfle, *Rev. Mod. Phys.* **79**, 1015 (2007).
- ⁷P. Monthoux, D. Pines, and G. G. Lonzarich, *Nature (London)* **450**, 1177 (2007).
- ⁸C. Castellani, C. Di Castro, and M. Grilli, *Phys. Rev. Lett.* **75**, 4650 (1995).
- ⁹J. H. She and J. Zaanen, *Phys. Rev. B* **80**, 184518 (2009).
- ¹⁰C. M. Varma, *Phys. Rev. Lett.* **83**, 3538 (1999).
- ¹¹C. Nayak, *Phys. Rev. B* **62**, 4880 (2000).
- ¹²W. Metzner, D. Rohe, and S. Andergassen, *Phys. Rev. Lett.* **91**, 066402 (2003).
- ¹³L. Benfatto, S. Caprara, and C. Di Castro, *Eur. Phys. J. B* **17**, 95 (2000).
- ¹⁴M. A. Continentino, *Quantum Scaling in Many-Body Physics* (World Scientific, Singapore, 2001).
- ¹⁵S. Sanfilippo, H. Elsinger, M. Núñez-Regueiro, O. Laborde, S. LeFloch, M. Affronte, G. L. Olcese, and A. Palenzona, *Phys. Rev. B* **61**, R3800 (2000).
- ¹⁶K. Biljakovic, M. Miljak, D. Staresinic, J. C. Lasjaunias, P. Monceau, H. Berger, and F. Levy, *Europhys. Lett.* **62**, 554 (2003).
- ¹⁷T. Sambongi, K. Tsutsumi, Y. Shiozaki, M. Yamamoto, K. Yamaya, and Y. Abe, *Solid State Commun.* **22**, 729 (1977).
- ¹⁸C. Roucau, *J. Phys. (France) C* **344**, C3-1725 (1983).
- ¹⁹M. Ido, Y. Okayama, T. Ijiri, and Y. Okajima, *J. Phys. Soc. Jpn.* **59**, 1341 (1990).
- ²⁰M. Núñez-Regueiro, J.-M. Mignot, and D. Castello, *Europhys. Lett.* **18**, 53 (1992).
- ²¹S. Yasuzuka, K. Murata, T. Fujimoto, M. Shimotori, and K. Yamaya, *J. Phys. Soc. Jpn.* **74**, 1782 (2005).
- ²²R. Jaramillo, Yejun Feng, J. C. Lang, Z. Islam, G. Srajer, P. B. Littlewood, D. B. McWhan, and T. F. Rosenbaum, *Nature (London)* **459**, 405 (2009).
- ²³P. Coleman and A. J. Schofield, *Nature (London)* **433**, 226 (2005).
- ²⁴A. P. Mackenzie and S. A. Grigera, *Science* **309**, 1330 (2005).