



HAL
open science

Comparative mapping in the Fagaceae and beyond with EST-SSRs

Catherine Bodenes-Brezard Bodénès, Emilie E. Chancerel, Oliver O. Gailing,
Giovanni G. G. G. Vendramin, Francesca F. Bagnoli, Jérôme J. Durand,
Pablo G. P. G. Goicoechea, Carolina C. Soliani, Fiorella F. Villani, Claudia C.
Mattioni, et al.

► To cite this version:

Catherine Bodenes-Brezard Bodénès, Emilie E. Chancerel, Oliver O. Gailing, Giovanni G. G. G. Vendramin, Francesca F. Bagnoli, et al. Comparative mapping in the Fagaceae and beyond with EST-SSRs. *BMC Plant Biology*, 2012, 12 (153), 40 p. 10.1186/1471-2229-12-153 . hal-00964224

HAL Id: hal-00964224

<https://hal.science/hal-00964224v1>

Submitted on 29 May 2020

HAL is a multi-disciplinary open access archive for the deposit and dissemination of scientific research documents, whether they are published or not. The documents may come from teaching and research institutions in France or abroad, or from public or private research centers.

L'archive ouverte pluridisciplinaire **HAL**, est destinée au dépôt et à la diffusion de documents scientifiques de niveau recherche, publiés ou non, émanant des établissements d'enseignement et de recherche français ou étrangers, des laboratoires publics ou privés.

This Provisional PDF corresponds to the article as it appeared upon acceptance. Fully formatted PDF and full text (HTML) versions will be made available soon.

Comparative mapping in the Fagaceae and beyond with EST-SSRs

BMC Plant Biology 2012, **12**:153 doi:10.1186/1471-2229-12-153

Catherine Bodénès (bodenés@pierroton.inra.fr)
Emilie Chancerel (chancerel@pierroton.inra.fr)
Oliver Gailing (ogailing@mtu.edu)
Giovanni G Vendramin (giovanni.vendramin@igv.cnr.it)
Francesca Bagnoli (bagnoli@ipp.cnr.it)
Jerome Durand (jer.durand@yahoo.fr)
Pablo G Goicoechea (pgoikoetxea@neiker.net)
Carolina Soliani (carosoliani@yahoo.com.ar)
Fiorella Villani (fiorella.villani@ibaf.cnr.it)
Claudia Mattioni (claudia.mattioni@ibaf.cnr.it)
Hans Peter Koelewijn (hanspeter.koelewijn@bayer.com)
Florent Murat (murat@clermont.inra.fr)
Jerome Salse (Jerome.SALSE@clermont.inra.fr)
Guy Roussel (roussel@pierroton.inra.fr)
Christophe Boury (boury@pierroton.inra.fr)
Florian Alberto (alberto@pierroton.inra.fr)
Antoine Kremer (kremer@pierroton.inra.fr)
Christophe Plomion (plomion@pierroton.inra.fr)

ISSN 1471-2229

Article type Research article

Submission date 27 March 2012

Acceptance date 22 August 2012

Publication date 29 August 2012

Article URL <http://www.biomedcentral.com/1471-2229/12/153>

Like all articles in BMC journals, this peer-reviewed article can be downloaded, printed and distributed freely for any purposes (see copyright notice below).

Articles in BMC journals are listed in PubMed and archived at PubMed Central.

© 2012 Bodénès *et al.*; licensee BioMed Central Ltd.

This is an open access article distributed under the terms of the Creative Commons Attribution License (<http://creativecommons.org/licenses/by/2.0>), which permits unrestricted use, distribution, and reproduction in any medium, provided the original work is properly cited.

For information about publishing your research in BMC journals or any BioMed Central journal, go to

<http://www.biomedcentral.com/info/authors/>

Comparative mapping in the Fagaceae and beyond with EST-SSRs

Catherine Bodénès^{1,2,*}

Email: bodenes@pierroton.inra.fr

Emilie Chancerel^{1,2}

Email: chancerel@pierroton.inra.fr

Oliver Gailing^{3,11}

Email: ogailing@mtu.edu

Giovanni G Vendramin⁴

Email: giovanni.vendramin@igv.cnr.it

Francesca Bagnoli⁵

Email: bagnoli@ipp.cnr.it

Jerome Durand^{1,2}

Email: jer.durand@yahoo.fr

Pablo G Goicoechea⁶

Email: pgoikoetxea@neiker.net

Carolina Soliani⁷

Email: carosoliani@yahoo.com.ar

Fiorella Villani⁸

Email: fiorella.villani@ibaf.cnr.it

Claudia Mattioni⁸

Email: claudia.mattioni@ibaf.cnr.it

Hans Peter Koelewijn⁹

Email: hanspeter.koelewijn@bayer.com

Florent Murat¹⁰

Email: murat@clermont.inra.fr

Jerome Salse¹⁰

Email: Jerome.SALSE@clermont.inra.fr

Guy Roussel^{1,2}

Email: roussel@pierroton.inra.fr

Christophe Boury^{1,2}

Email: boury@pierroton.inra.fr

Florian Alberto^{1,2}
Email: alberto@pierroton.inra.fr

Antoine Kremer^{1,2}
Email: kremer@pierroton.inra.fr

Christophe Plomion^{1,2}
Email: plomion@pierroton.inra.fr

¹ INRA, UMR1202 BIOGECO, Cestas F-33610, France

² Université de Bordeaux, UMR1202 BIOGECO, Cestas F-33610, France

³ Forest Genetics and Forest Tree Breeding Büsgen Institute Faculty of Forest Sciences and Forest Ecology Göttingen University, Büsgenweg 2, 37077 Göttingen, Germany

⁴ Plant Genetics Institute, National Research Council, Via Madonna del Piano 10, Sesto Fiorentino, FI 50019, Italy

⁵ Plant Protection Institute, National Research Council, Via Madonna del Piano 10, Sesto Fiorentino, FI 50019, Italy

⁶ NEIKER-Tecnalia, Dpto Biotecnologia, PO Box 46, Vitoria-Gasteiz 01080, Spain

⁷ Unidad de Genética Ecológica y Mejoramiento Forestal, INTA EEA Bariloche, Bariloche CC277 8400, Argentina

⁸ CNR Istituto di Biologia Agroambientale e Forestale, Porano, TR 05010, Italy

⁹ ALTErrA Wageningen UR, PO Box 47, Wageningen 6700 AA, The Netherlands

¹⁰ INRA, UMR1095 GDEC, Clermont-Ferrand F-63100, France

¹¹ New address: School of Forest Resources and Environmental Science, Michigan Technological University, Houghton, MI 49931, USA

* Corresponding author. INRA, UMR1202 BIOGECO, Cestas F-33610, France

Abstract

Background

Genetic markers and linkage mapping are basic prerequisites for comparative genetic analyses, QTL detection and map-based cloning. A large number of mapping populations have been developed for oak, but few gene-based markers are available for constructing

integrated genetic linkage maps and comparing gene order and QTL location across related species.

Results

We developed a set of 573 expressed sequence tag-derived simple sequence repeats (EST-SSRs) and located 397 markers (EST-SSRs and genomic SSRs) on the 12 oak chromosomes ($2n = 2x = 24$) on the basis of Mendelian segregation patterns in 5 full-sib mapping pedigrees of two species: *Quercus robur* (pedunculate oak) and *Quercus petraea* (sessile oak). Consensus maps for the two species were constructed and aligned. They showed a high degree of macrosynteny between these two sympatric European oaks. We assessed the transferability of EST-SSRs to other Fagaceae genera and a subset of these markers was mapped in *Castanea sativa*, the European chestnut. Reasonably high levels of macrosynteny were observed between oak and chestnut. We also obtained diversity statistics for a subset of EST-SSRs, to support further population genetic analyses with gene-based markers. Finally, based on the orthologous relationships between the oak, *Arabidopsis*, grape, poplar, *Medicago*, and soybean genomes and the paralogous relationships between the 12 oak chromosomes, we propose an evolutionary scenario of the 12 oak chromosomes from the eudicot ancestral karyotype.

Conclusions

This study provides map locations for a large set of EST-SSRs in two oak species of recognized biological importance in natural ecosystems. This first step toward the construction of a gene-based linkage map will facilitate the assignment of future genome scaffolds to pseudo-chromosomes. This study also provides an indication of the potential utility of new gene-based markers for population genetics and comparative mapping within and beyond the Fagaceae.

Background

Genetic linkage maps constitute an ideal framework for studies of the genetic architecture of quantitative traits [1,2] and genome evolution [3,4]. They are also a prerequisite for map-based gene cloning [5-7] and for the ordering of physical scaffolds in genome sequencing projects [8]. Furthermore they are essential tools for marker assisted plant breeding [9].

Comparative analyses of genetic maps across phylogenetically related species are based on the development of transferable and orthologous genetic markers. Simple sequence repeats (SSRs) are the markers of choice, because they are reproducible, abundant in the genome and they provide highly polymorphic information and are readily transferable between phylogenetically related species [10]. Their properties are highly prevalent in EST-derived SSRs, making these markers particularly useful, as shown for *Theobroma* [11], *Silene* [12], *Prunus* [13], *Dactylis* [14] and *Citrus* [15]. SSRs are also easy to handle and, once developed, are cost-effective markers for high-throughput genotyping.

In the last 12 years, several linkage maps have been generated for the three main genera of the Fagaceae family: oaks (*Quercus*), beeches (*Fagus*), and chestnuts (*Castanea*). These long-lived species constitute important economic and ecological resources and have been the focus of genetic investigations relating to their evolution and more applied objectives, such as

those of conservation and breeding programs [16]. Linkage maps have been established to support forward genetic approaches for studying the genetic architecture of adaptive traits (number, location and effect of QTLs) and to increase our knowledge of the structural features of the oak genome and its evolutionary history.

First-generation linkage maps have been obtained with anonymous RAPD and AFLP markers for oak [17], chestnut [18,19] and beech [20]. QTL studies, mostly in oak, have focused on dissecting the genetic architecture of adaptive traits, such as growth and bud phenology [21-23] and of traits related to species divergence between pedunculate and sessile oaks, two species occurring in sympatry in Europe [24,25]. A limited number of genomic SSRs (about 50) and EST-based (about 50) markers [26,27], have also been added to these maps. These markers allowed to align homologous linkage groups between oak and chestnut and to compare and validate the QTLs that had been previously characterized in the two genera [27,28]. A first step toward the construction of a dense SSR-based genetic map was taken recently, with the development and mapping of 256 EST-SSRs [29]. The authors used a selective mapping strategy with a bin set of 14 highly informative offspring from a single full-sib (FS) mapping population for which an AFLP framework map was available. SSR markers were assigned to 44 bins of the female and 37 bins of the male parental maps, spanning the entire genome.

The main goal of this study was to advance the establishment of a dense EST-SSR-based map for oak, by genotyping trees with a broader genetic background and using a larger set of genomic and EST-SSRs. Our specific objectives were as follows:

- i) To optimize comparative mapping between two *Quercus* species by identifying a subset of SSRs that were transferable and orthologous across different mapping pedigrees. We genotyped a total of 400 offspring from five families obtained from controlled crosses of the *Q. robur* and *Q. petraea* genotypes. We then generated 10 individual linkage maps (one for each of the parents used in the crosses) by the two-way pseudo-testcross mapping strategy [30] and constructed consensus maps for each species from 419 genomic and EST-based SSR markers.
- ii) To determine gene content (synteny) and order (collinearity) between these two sympatric species [7,30-32].
- iii) To assess the transferability of a subset of EST-SSRs in several Fagaceae and Nothofagaceae species and to describe the genetic diversity of several oak populations depending on the type of the repeated motifs. We also mapped transferable EST-SSRs, in European chestnut for which two linkage maps were available [28] making it possible to refine the first comparative map for oak and chestnut [27].
- iv) To unravel the evolutionary paleohistory of oak chromosomes, by genetic mapping of 321 EST-SSR and 60 SNP-based markers identified from oak transcriptome sequence information (31,798 Sanger-based unigenes from Ueno et al. [33]).

These four objectives are interconnected, as shown in Figure 1.

Figure 1 Relationships between the four objectives of this study. Inputs, outputs and species involved

Methods

Functional annotation of EST-SSRs

The functional annotation of EST-SSRs was based on Gene Ontology [34] and was performed with Blast2GO [35], using the following parameters: Blastx search against the non redundant NCBI database (e-value of $1e^{-6}$).

On the basis of GO categories, we assigned oak ESTs containing SSR motifs (Ueno et al. [33]) to three principal groups: biological processes, cellular compounds and molecular functions. The GO classification obtained was compared (with Expander software, [36]) between four sets of sequences containing SSRs: 3'UTRs (7,680 elements), 5'UTRs (8,646 elements), coding regions (13,899 elements) and non-coding regions (15,829 elements).

Mapping of SSRs in *Q. robur* and *Q. petraea* and construction of consensus species maps

Mapping populations

Five mapping pedigrees (P1-P5) of variable sample sizes were used (Table 1), consisting of one *Q. robur* x *Q. petraea*, one *Q. petraea* and three *Q. robur* full-sib families. These full-sibs were installed at the nurseries of INRA (Cestas-France), the University of Göttingen (Germany) and Alterra (Wageningen -The Netherlands). DNA was extracted from the leaves with the DNeasy plant mini kit (Qiagen, Hilden, Germany), according to the manufacturer's instructions.

Table 1 Description of the five full-sib mapping populations (N: sample size used for linkage mapping)

	Short name	species	N	location	country
3P x A4	P1	<i>Q. robur</i> x <i>Q. robur</i>	92	44°44 N, 0.46°W	France
11P x QS29	P2	<i>Q. robur</i> x <i>Q. petraea</i>	84	44°44 N, 0.46°W	France
QS21 x QS28	P3	<i>Q. petraea</i> x <i>Q. petraea</i>	78	44°44 N, 0.46°W	France
SL03 x EF03	P4	<i>Q. robur</i> x <i>Q. robur</i>	101	51°53'N, 9°93'E	Germany
AltP1 x AltP2	P5	<i>Q. robur</i> x <i>Q. robur</i>	96	51°98'N, 5°66'E	The Netherlands

Development of SSR markers and genotyping

A subset of 573 EST-SSRs identified by Durand et al. [29] was screened for polymorphisms against the 10 parents of the five mapping populations and four offspring per pedigree. We added 93 genomic SSRs (gSSRs) described in previous studies [37-44], KawaharaT pers comm) to the screening step (see Additional file 1 for detailed information on markers and primer sequences). We then used the polymorphic markers to genotype the five mapping populations.

PCR amplification and fragment separation were optimized for M13 fluorescently labeled tailed primers [44]. PCR was performed in a final volume of 10 μ L containing 1 x PCR buffer [10 mM Tris-HCl, 50 mM KCl 1.5 mM MgCl₂, pH 8.3 at 25 °C] (BioLabs, Ipswich, England), 100 μ M of dNTPs, 0.045 μ M forward primers, 0.165 μ M reverse primer (5 μ M),

0.165 μ M M13 primer, 0.25 U of *Taq* polymerase (BioLabs) and 5 to 10 ng of plant DNA. The cycling conditions were as described by Schuelke et al., [45]: initial denaturation at 94 °C for 4 minutes, followed by 35 cycles of 94 °C for 30 s, 56 °C for 45 s, and 72 °C for 45 s, nine touchdown cycles of 94 °C for 30 s, 53 °C for 45 s, and 72 °C for 45 s and a final extension at 72 °C for 10 minutes. Depending on the pedigree and partners, electrophoresis was performed with the Licor 4200 IR2 system (Lincoln, NB, USA), the ABI 3100 system (Applied Biosystems, Carlsbad, CA, USA) or the Megabace TM 1000 96 capillary electrophoresis system (GE Healthcare, Buckinghamshire, UK). The data generated were analyzed with the 4300 DNA analyzer software for the Licor system, GeneScan 3.7 and Genotyper 3.7 for ABI 3100 and Fragment profiler1.2 for Megabace.

Individual map construction

We constructed 10 parental genetic linkage maps (7 for *Q. robur* and 3 for *Q. petraea*) by the two-way pseudo-test cross mapping strategy [30]. Linkage analysis was performed with JoinMap version 4.0 [46]. Polymorphic SSR loci were classified into three categories: testcross markers segregating in a 1:1 ratio, testcross markers segregating in a 1:1:1:1 ratio and intercross markers segregating in a 1:2:1 ratio. Chi-squared goodness-of-fit tests were used to identify markers with patterns of segregation departing from Mendelian expectations. Loci with distorted ratios (P -value <0.05) were excluded from linkage map construction. Individuals and loci for which more than 50% of the data were missing were excluded from the analysis. A minimum LOD score of 3 and a maximum recombination fraction of 0.45 were set as the linkage thresholds for marker grouping. Maternal and paternal datasets were created with the “create maternal and paternal population nodes” command in JoinMap. The regression mapping algorithm was used for map construction. Recombination frequencies were converted into map distances in centimorgans (cM), with the Kosambi mapping function. Linkage groups were drawn with MapChart [47].

Estimation of genome size

Genome length (L) was estimated from partial linkage data, according to the formula $L = n(n-1)d/k$, where n is the number of framework markers, d is the maximum distance between two adjacent markers (in cM) at a minimum LOD score for linkage, and k is the number of marker pairs with a LOD value exceeding a minimum threshold [48,49]. LOD score thresholds of 3, 4 and 5 were used to estimate genome length.

Construction of consensus genetic linkage maps for *Q. robur* and *Q. petraea*

Consensus species maps for *Q. robur* and *Q. petraea* were established by combining parental map datasets for *each* species with the “join-combine groups for map integration” command of JoinMap, which creates a composite map from different linkage groups sharing common markers. We used the mapping parameters and options described above. We assessed the heterogeneity of recombination rates between SSR marker pairs, and SSR markers with highly heterogeneous recombination rates were excluded from the construction of species-specific framework maps. Markers that could not be ordered with the same degree of confidence were added as accessory markers, using the two-point LOD scores and recombination fraction available from the “maximum linkage” table of JoinMap. Similarly, when several markers were found to be collocated, only one was retained on the species framework map; the others were added as accessory markers.

Databases

Single-tree genotypic data for offspring and linkage maps are available from the QuercusMap database of the *Quercus* portal (<https://w3.pierroton.inra.fr/QuercusPortal/index.php>), the European genetic and genomic web resources for *Quercus*. DNA sequences and primer pairs for SSR loci are available from the SSR database at the same URL.

Transferability of EST-SSRs and comparative mapping of oak and chestnut

Transferability of EST-SSRs

We assessed the transferability of EST-SSR markers to other Fagaceae species, by carrying out cross-species amplification in six species (*Castanea sativa*, *Fagus sylvatica*, *Quercus faginea*, *Quercus pyrenaica*, *Quercus ilex*, and *Quercus suber*). We also assessed transferability to two species of the related family Nothofagaceae (*Nothofagus pumilio* and *Nothofagus antarctica*). Each species was represented by at least two individuals. SSR amplification and genotyping were performed as described above, with a subset of 243 EST-SSRs randomly selected from the list reported by Durand et al. [29]. The selected microsatellite markers included 137 di-, 90 tri-, 2 tetra-, 1 penta- and 13 hexanucleotide repeats.

Comparative mapping of Quercus and Castanea

In total, 96 offspring of a single full-sib pedigree of *Castanea sativa* were genotyped with *Quercus* EST-SSRs. We assessed the amplification of 339 loci using the PCR conditions described above. Polymorphic SSRs were added to the polymorphic markers already available for this pedigree (including RAPD, AFLP, gSSR, EST-P markers; 393 loci in total). Individual parental maps and a consensus map were constructed with JoinMap, using the same procedure followed for *Quercus*. Finally, homologous linkage groups in *Quercus* and *Castanea* were identified from the location of orthologous markers displaying multiple and parallel linkages.

Diversity analysis

Two experiments were carried out to provide insight into the genetic diversity of EST-SSRs. The first focused on a large number of loci in a small number of individuals of the two sympatric species *Q. robur* and *Q. petraea* (Additional file 2). We assessed the polymorphism of the same set of 243 oak EST-SSRs for 12 individuals from each species. DNA was extracted from leaves with the DNeasy plant mini kit (Qiagen). An M13 tail (TGT AAA ACG ACG GCC AGT) was added to the 5'-end of each forward primer, as described by Schuelke [45]. Each PCR was performed in a total volume of 11 μ L containing 1 x PCR buffer, 200 μ M of each dNTP, 0.5 U *Taq* polymerase (XtraTaq, Genespin, Milan, Italy), 1.5 mM MgCl₂, 0.2 μ M of each primer, and 10 ng of template DNA. All EST-SSR markers were amplified with an Eppendorf thermal cycler (Mastercycler, Hamburg, Germany), by a touchdown procedure: 3 min at 94 °C, 10 touchdown cycles of 94 °C for 30 s, 60 °C for 30 s (–1 °C/cycle), 72 °C for 30 s; 27 cycles of 94 °C for 30 s, 50 °C for 30 s, 72 °C for 30 s and a final extension at 72 °C for 10 min. The fluorescently labeled PCR products were separated by capillary electrophoresis, with a 400 bp size standard, in a Megabace TM 1000 96 capillary electrophoresis system. Alleles were sized with Fragment profiler version 1.2.

Genetic diversity parameters (AR , H_o , H_e) of *Q. robur* and *Q. petraea* were calculated using the FSTAT software package version 2.9.3 [50], which is implemented for the sample-size independent rarefaction analysis of allelic richness.

The second experiment was conceived as a proof of concept for the use of the EST-SSRs in the genetic analysis of the largely unknown semi-deciduous oak species distributed around the Mediterranean basin. We genotyped 96 individuals from the two sub-mediterranean oak species *Quercus faginea* and *Quercus pyrenaica* with 64 EST-SSRs evenly distributed among the 12 linkage groups (25 in common with the previous experiment). Additional file 3 shows the locations of the 8 populations per species that were selected to represent most of the geographic and ecological variation in the two species. DNA was extracted from leaf samples using a modified CTAB method because many of the *Q. pyrenaica* samples clogged the columns of commercial DNA extraction kits. The main modification to the standard DNA extraction procedure was the thorough chloroform extraction (3–4 times with a 1:1 volume) following cell lysis in the CTAB buffer. PCRs were performed in a total volume of 10 μ L containing 1 x PCR buffer, 100 μ M of each dNTP, 0.25 U *Taq* polymerase (KAPA *Taq*, KapaBiosystems, Boston, USA), 2 mM $MgCl_2$, 0.045 μ M forward primers, 0.165 μ M reverse primer, 0.165 μ M M13-fluorescent primer and 10 ng of template DNA. Cycling conditions consisted of an initial denaturation step (94 °C 5 minutes) followed by 7 touch-down cycles (from 63.7 to 59.5 °C), 20 cycles at 59.5 °C annealing temperature, 12 cycles at 57.5 °C annealing temperature and a final extension step (10 minutes at 72 °C). The fluorescently labelled PCR products were electrophoretically separated in an ABI3130 sequencer (Applied Biosystems) using the GS500LIZ size standard. Peak sizes were scored with GeneMapper v.4.0 and allele binning was performed with MsatAllele R package [51]. Genetic diversity parameters (AR , H_o , H_e) were estimated with Fstat v.2.9.3 [50].

Oak genome evolution

Gene choice and genotyping of SNP-based markers

We constructed an integrated map for *Quercus* based on the EST-SSRs and an additional set of SNP-based markers, for analysis of the synteny between the oak linkage map and those of other previously sequenced eudicots.

We identified 105 candidate genes (set 1) for involvement in bud burst on the basis of the following criteria: i) differential expression between the periods before and after bud flush [52], ii) colocalization with bud burst QTLs [22], and iii) a known functional role in model plants. Two types of polymorphisms were identified: *in vitro* SNPs/Indels from resequenced gene fragments from a panel of nine oak populations [22] and unpublished data and *in-silico* SNPs/Indels retrieved from expressed sequence tags [33] as described by Lepoittevin et al. [53]. Finally, 78 *in vitro* and 306 *in silico* SNPs/Indels were included in a 384-SNP assay, including 26 insertions-deletions (indels) of between 1 and to 3 bp in size. Full description of the SNP array is provided by Alberto et al. [54].

Genotyping was carried out on three mapping populations comprising 177, 80 and 90 F1 plants from the P1, P2 and P3 pedigrees, respectively. DNA was extracted with the *Invisorb DNA plants 96 kit* from Invitex (GmbH, Berlin, Germany), according to the manufacturer's instructions. Multiplex reactions were prepared with 250 ng of template DNA per sample. Genotyping was carried out with the Illumina GoldenGate SNP genotyping platform (Illumina, San Diego, CA, USA) at the Genome-Transcriptome Facility in Bordeaux, France

(<http://www4.bordeaux-aquitaine.inra.fr/pgtb>). The intensity of the fluorescent signals was measured with the BeadXpress Reader (Illumina Inc, San Diego, USA) and analyzed with GenomeStudio v 3.1.14 (Illumina Inc). Quality scores were generated for each genotype, using a GenCall50 (GC50) score cutoff of 0.25 and a CallRate (CR) threshold of 0.85. These scores reflect the quality of genotype clusters (GC50) and the proportion of samples with a genotype defined for a particular SNP (CR) [55]. Genotype clusters were adjusted manually if necessary.

In addition to this first set of markers, seven candidate genes (set 2) for drought and hypoxia tolerance (from 25 genes initially screened) were found to be informative in one to three pedigrees. Two methods were used for genotyping: i) SSCP (single-strand conformation polymorphism [56], which was used for the first time on a Licor sequencer (see Additional file 4), and ii) primer extension with the detection of fluorescence polarization [57] with the Acycloprime-FP SNP detection kit (Perkin Elmer Life Sciences, Boston, MA, USA). Genotyping was carried out in accordance with the kit manufacturer's instructions and fluorescence was measured with a fluorescence polarization reader (Victor-Wallace from Perkin Elmer Life Sciences, Boston, MA, USA) at 20, 25 and 35 cycles.

Consensus map construction

The consensus map was constructed by joining the 10 independent parental maps based on the mapping populations in which EST-SSRs (P1 to P5) and SNP-based markers (P1 to P3) were mapped. JoinMap was first used to calculate individual maps from raw segregation data, with the Kosambi mapping function. A minimum LOD score threshold of 3.0 was used for the grouping of all markers. An integrated map was then constructed for each linkage group, by integrating the "bridge markers" common to two or more individual maps. For construction of the consensus map, we assumed that the rates of recombination between the two species and between male and female maps were uniform (but see [58]).

Using the regression algorithm of JoinMap, we obtained three maps with different levels of statistical support for ordering (denoted map1-map2-map3 in descending order of statistical support) for each linkage group. For macrosynteny analysis, we decided to retain the most reliable map (map1), adding markers with lower LOD scores as accessory markers. The position of each accessory marker relative to its most probable framework marker was then determined from the two-point LOD scores and recombination fractions provided by the "maximum linkage" table of JoinMap. Finally, markers were assigned to 10 cM bins within each of the 12 linkage groups of the consensus map, for the identification of regions orthologous to sequences in *Arabidopsis*, grape, poplar, *Medicago* and soybean.

Evolutionary analysis

Genome sequences

The *Arabidopsis* (5 chromosomes - 33198 genes - 119 Mb - ftp://ftp.arabidopsis.org/home/tair/Genes/TAIR9_genome_release/TAIR9_sequences/), grape (19 chromosomes - 21189 genes - 302 Mb - http://www.genoscope.cns.fr/externe/Download/Projets/Projet_ML/data/), poplar (19 chromosomes - 30260 genes - 307 Mb - ftp://ftp.jgi-psf.org/pub/JGI_data/Poplar/), *Medicago* (8 chromosomes - 38834 genes - 261 Mb - <ftp://ftpmips.helmholtz-muenchen.de/plants/medicago/>) and soybean (20 chromosomes - 46194 genes - 949 Mb -

ftp://ftp.jgi-psf.org/pub/JGI_data/phytozome/v5.0/Gmax/) genome sequences were downloaded. CDS annotations (identity, sequence, position) were considered for the synteny and duplication analyses described below. We mined the *Arabidopsis*, grape, poplar, *Medicago* and soybean sequence databases to identify genes paralogous and orthologous to the 31,798 Sanger-based oak unigenes described by Ueno et al. [33].

Synteny and duplication analysis

We used BLAST to align genomes (*i.e.* CDS for sequenced genomes and ESTs for oak). We used two parameters for these analyses, to take into account not only similarity but also the relative lengths of the aligned sequences: CIP (cumulative identity percentage) and CALP (cumulative alignment length percentage). $CIP = \sum [ID \times (HSP/AL) \times 100]$ corresponds to the cumulative percentage sequence identity observed for all the high-scoring sequence pairs (HSPs) divided by the cumulative aligned length (AL), which corresponds to the sum of all HSP lengths. $CALP [AL/Query \text{ length}]$, is the cumulative AL for all HSPs divided by the length of the query sequence. The use of these parameters for BLAST analysis resulted in the highest cumulative percentage identity over the longest cumulative length, thus maximizing stringency in the definition of conservation between the two genomes compared.

Distribution of paralogous and orthologous gene pairs

We estimated sequence divergence and dated speciation events, based on the rates of non-synonymous (K_a) and synonymous (K_s) substitutions calculated with MEGA-3 [59]. The mean substitution rate (r) for grasses — 6.5×10^{-9} substitutions per synonymous site per year — was used to determine the ages of the genes considered [60,61]. The time (T) since gene insertion was then estimated with the formula $T = K_s/r$.

Results

Functional annotation of EST-SSRs

We identified more than 52,834 EST-SSRs among the *Quercus* ESTs [33]. As a first step towards functional characterization of the EST-containing SSRs, we used the Slim GO classification and compared the annotations for four sets of sequences containing SSRs: coding regions (CRs), non-coding regions (NCRs), 5'UTRs and 3'UTRs. We identified 35, 7 and 19 gene categories, at “level 3”, within the biological process (BP), cell compound (CC) and molecular function (MF) classes, respectively (Additional file 4). About half the SSRs in the BP class belong to four main categories: “primary metabolic processes” (11%-13.6%), “cellular metabolic processes” (11.7%-14.8%), “macromolecule metabolic processes” (8.1%-10.6%) and “biosynthetic processes” (7.7%-9.9%). For the CC class, 80% of the SSRs were assigned to the “cell part” (42.5%-44.8%) and “membrane-bound organelle” (30.8%-32.3%) categories. For the MF class, six categories of similar size accounted for most of the SSRs: namely “nucleic acid binding” (10.7-14.4), “protein binding” (12.5-13.5%), “nucleotide binding” (10.5%-11.1%), “ion binding” (10.1%-10.6%), “transferase activity” (9.8%-11.3%) and “hydrolase activity” (9.7%-10.1%). The distribution of these categories was similar between the four datasets (Additional file 5), indicating a lack of ability of gene ontology to discriminate between the different transcribed regions in terms of the presence of SSRs. However, slight differences between transcribed regions were nevertheless observed when all categories were considered together in a hierarchical clustering analysis (Additional file 6),

but the distribution between the BP, CC and MF classes of the four datasets remained inconsistent.

SSR-based map construction in *Q. robur* and *Q. petraea* and synteny analysis

Identification of polymorphic markers

In total, we identified 573 primer pairs, which were tested for polymorphism in at least one pedigree (Table 2). Overall, 378 EST-SSRs were informative. We tested 93 of the gSSRs already available for the Fagaceae; 68 (73%) were found to be polymorphic in at least one pedigree. Thus, in total, 446 polymorphic loci (68 gSSRs and 378 EST-SSRs) were available for further mapping.

Table 2 Summary of polymorphism statistics for the five pedigrees (P1 to P5), Na not available

	P1		P2		P3		P4		P5	
tested loci	321		434		406		Na		Na	
polymorphic loci	274 (85%)		211 (49%)		243 (60%)		145(% Na)		143(% Na)	
marker type	133		110		130		Na		70	
1:1:1:1	134		96		100		Na		63	
1:1	7		5		13		Na		10	
1:2:1	229		167		217		122		125	
EST-SSR	45		44		26		23		18	
g-SSR	female	male	female	male	female	male	female	male	female	male
genotyped offspring	46		84		78		96		101	
discarded offspring	0	0	6	4	0	1	3	4	10	11
polymorphic loci	205	195	169	144	190	171	110	114	100	103
discarded loci	0.5%	0%	0.6%	0.7%	0%	0%	2%	0%	20%	15%
	(1)	(0)	(1)	(1)	(0)	(0)	(2)	(0)	(20)	(16)
distorted	2.4%	1.5%	1.8%	6.9%	2.1%	1.8%	2.7%	0.9%	2%	3.9%
	(5)	(3)	(3)	(10)	(4)	(3)	(3)	(1)	(2)	(4)
unlinked loci	4.3%	6%	4%	7.6%	0.5%	0.6%	0%	0.9%	23%	25%
	(9)	(12)	(7)	(11)	(1)	(1)	(0)	(1)	(23)	(26)
mapped loci	93%	93%	933%	85%	975%	98%	95%	98%	55%	55%
	(190)	(180)	(158)	(122)	(185)	(167)	(105)	(112)	(55)	(57)

Construction of individual linkage maps

Genotypic data were available for 446 loci in one to five mapping populations among them 397 were mapped. We found that 50% to 85% of the loci tested were polymorphic, depending on the pedigree. The interspecific pedigree (P2) was found to be less polymorphic than the intraspecific pedigrees (Table 2). Differences in levels of polymorphism between intra vs. interspecific pedigrees are likely be due to sampling effects, as the two species

exhibit similar levels of genetic diversity and very low interspecific differentiation. The number of tested loci found to be polymorphic varied considerably between the parents, from 100 loci for P5-female (*Q. robur*) to 205 loci for P1-female (*Q. robur*). Distorted loci were more frequent for P2-female (*Q. robur*) from the interspecific pedigree (6.8%) than for the other pedigrees (Table 2). Unlinked loci were rare (except for both of the parental maps for P5, in which 45% of the loci were ungrouped). In the following analyses, we focused on the four pedigrees (P1 to P4) because of the smaller set of data for P5.

Linkage group (LG) statistics

We constructed 12 LGs for each parental map, except for the interspecific P2-male parent, for which LG11 was missing due to the fact that all markers were distorted and therefore excluded a priori from linkage map construction. Interestingly, LG11 for the P2-female parent also included four distorted loci suggesting the presence of loci involved in species incompatibility. The development and mapping of a large amount of SNP markers will certainly provide new insights into the identification and mapping of loci involved in reproductive barriers between these two hybridizing oak species.

The mean number of markers per LG was between 7.6 for LG4 and 26.9 for LG2 over the 8 maps, (“groups” with only 2 markers were not considered) (Additional file 7). The mean map length of the various LGs was between 42.2 cM for LG4 and 85.3 cM for LG2, with an overall mean of 58.4 cM over the 8 maps (Additional file 8).

Estimation of total genome length

The total observed map length was 572.9 cM to 846.6 cM (Additional file 8). Based on these partial linkage data, estimated genome sizes were obtained for various LOD score values (3, 4 and 5). They ranged from 945 to 1,611 cM (Additional file 9).

Number of alleles of mapped SSRs

The number of alleles observed in the 10 parents depended on the type of motif considered: the number of loci with three or four alleles was systematically higher for loci with dinucleotide repeats than for those with trinucleotide or hexanucleotide repeats (Table 3). This trend was conserved even if we excluded gSSRs from the analysis.

Table 3 Type of SSR motifs for the five pedigrees

Motif type	Number of loci/motif type	Number of alleles		
		2	3	4
di	503	200 (0.4%)	132 (0.26%)	171 (0.34%)
tri	259	163 (0.63%)	58 (0.22%)	38 (0.15%)
hexa	59	16 (0.27%)	4 (0.07%)	1 (0.02%)

Mapping with several pedigrees

The genotyping of several pedigrees significantly increased the number of loci identified as polymorphic (Figure 2). P1 was the most informative pedigree in terms of mapped markers (274 polymorphic loci). However, adding P3 to the analysis increased the number of markers identified as polymorphic by 24% (88 new markers). Successive additional inclusions of P2,

P4 and P5 increased the number of polymorphic markers identified by 35, 11 and 16 SSRs, respectively. For the 12 linkage groups obtained for each parental map, the number of markers common to at least two maps varied between 15 (LG4) and 54 (LG2) (Figure 3). The information provided by each marker for the 10 genotyped parents varied from 18.5% polymorphic loci for one parent, to 21.4% for two, 15.4% for 3, 14.4% for 4, 9.1% for 5, 11% for 6 and less than 5% for 7 or more (Figure 4). The number of shared loci per linkage map decreased with the number of maps considered. In total, 89 mapped SSRs were common to two parental maps, whereas only two were common to nine parental maps.

Figure 2 Information gained by genotyping several pedigrees (P1 to P5)

Figure 3 Distribution of common loci per LG for at least two maps

Figure 4 Number of shared loci between two to ten parental maps

Consensus maps for Q. robur and Q. petraea and comparative mapping

A consensus map for *Q. robur* was constructed from the seven *Q. robur* parental maps. This map includes 398 markers (including 179 accessory markers) and spans 933 cM (Table 4). Similarly, a consensus map for *Q. petraea* was established from the three parental maps available for this species. It includes 275 markers (90 accessory markers) and spans 767 cM (Table 4, Figure 5). LG sizes varied from 61.3 cM (LG11) to 116 cM (LG2) for *Q. robur* and from 31.4 cM (LG11) to 120 cM (LG9) for *Q. petraea*. Mean LG length was 78 cM for *Q. robur* and 64 cM for *Q. petraea*. The mean spacing between markers was 4.25 cM, with values ranging from 2.8 cM to 6.42 cM (Table 5).

Table 4 LG size (in cM) for both species, *Q.robur* and *Q.petraea*

n° LG	LG1	LG2	LG3	LG4	LG5	LG6	LG7	LG8	LG9	LG10	LG11	LG12	tot	mean
<i>Q.robur</i>	84.4	116	81.5	62.3	76.8	74	63.6	101	71.1	76.6	61.3	64.2	933	77.8
<i>Q.petraea</i>	81.4	84.8	64.8	47.5	64.2	62.8	47	66.5	120	48	31.4	48.3	767	63.9

Figure 5 LG consensus species maps of *Q. robur* and *Q. petraea*

Table 5 Mean distance between two loci for each LG and both species, *Q.robur* and *Q.petraea*

mean dist loci/cM	LG1	LG2	LG3	LG4	LG5	LG6	LG7	LG8	LG9	LG10	LG11	LG12	mean	
<i>Q. robur</i>		2.8	1.2	2.7	3.3	2.5	2.1	2.9	2.8	2.7	2.7	2.5	2.9	2.6
<i>Q. petraea</i>		3.4	2.0	4	2.4	2.8	2.2	3.9	2.1	4.1	2.4	2.8	2.7	2.9

The consensus species maps were compared for the analysis of genomic organization and structural rearrangements. A high degree of macrocollinearity was observed between the two maps, based on 100 common markers evenly distributed over the 12 LGs (Figure 5). Some order discrepancies occurred in small sections of LGs, as in LG2 and LG3, for example. Furthermore, the positions of a few markers were inconsistent over larger distances. For example, GOT009 was localized to the top of LG1 for *Q. petraea* but was found in the center of this LG in *Q. robur*. It should also be noted that LG11 was split into two parts in *Q. petraea*.

Transferability of EST-SSRs to other members of the Fagaceae and Nothofagaceae and comparative mapping of *Quercus* and *Castanea*

Transferability of EST-SSRs

We assessed the transferability of 198 EST-SSR markers to *Q. ilex* and *Q. suber*, of 194 markers to *C. sativa* and *F. sylvatica*, and 126 markers to *N. pumilio* and *N. antarctica* (Additional file 10). A PCR product of the expected size was amplified in at least one of the Fagaceae or Nothofagaceae species for 91.8% (223/243) of the EST-SSRs tested. Within the Fagaceae family, transferability was greatest for the two white oaks (*Q. faginea* and *Q. pyrenaica*), with transferability rates close to 100% (a few EST-SSRs amplified products that could not be analyzed due to extra bands and/or duplicated genes). Transferability was intermediate for *Q. suber*, *Q. ilex* and *C. sativa*, with rates of 70.7%, 69.7% and 68% respectively. The lowest transferability within the Fagaceae family was observed in *Fagus sylvatica*, with only 14.4% of transferable markers. Levels of transferability to *Nothofagaceae* species were very low. Only 12 and 15 markers were successfully transferred to *N. pumilio* and *N. antarctica*, respectively.

Comparative mapping

We mapped 555 polymorphic markers in *Castanea* (Table 6), 91 of which were common (63 EST-SSRs, 16 gSSRs, 12 EST-P) to the consensus *Quercus* map. For all 12 *Castanea* LGs (LG-C), homologous linkage groups were identified in *Quercus* (LG-Q), with four to 17 markers shared for LG4-C (= LG5-Q) and LG1-C (= LG2-Q), respectively (Table 7). A set of 16 markers was located on linkage groups that were not homologous between *Castanea* and *Quercus*. Overall, macrosynteny was well conserved between the two genera, despite the inversion of a few markers (illustrated for one LG in Figure 6 and supported for all LGs in Additional file 11).

Table 6 Segregating and mapped markers in *Castanea sativa*

		Castanea	
genotyped samples		90	
polymorphic loci		555	
segregation type	1:1	502	
	1:1:1:1	50	
	1:2:1	3	
markers type		female	male
	RAPD	183	149
	AFLP	31	14
	EST-P	32	25
	gSSR	27	28
	EST-SSR	60	55
	total	333	271
distorted loci		12 (3.6%)	8 (3%)
discarded loci		20	10
unlinked loci		7	15
mapped loci		306 (92%)	246 (91%)

Table 7 Correspondence between LG in *Quercus* (this study) and *Castanea* (following the nomenclature of Casasoli et al. [27])

LG_Q	LG_C
1	6
2	1
3	8
4	2
5	4
6	11
7	5
8	7
9	9
10	10
11	3
12	12

Figure 6 Synteny between *Quercus* and *Castanea* for LG1. Loci in red are common for both species, loci in green are located as accessory loci (theta/LOD), parts of linkage group which are represented by the same colour correspond to homologous segments between the two species

Diversity analysis

A high-quality amplification product was obtained for 83.8% (166) of the 198 markers studied in the first experiment and 94.6% (157) were found to be polymorphic in at least one natural population of *Q. robur* and *Q. petraea*. In the two populations considered, expected heterozygosity (H_e) ranged from low (0.100 and 0.091, for *Q. robur* and *Q. petraea*, respectively) to high (0.939 and 0.964, respectively) values. Diversity levels (allelic richness and H_e) were similar in the two species.

Diversity levels were rather similar in the two sub-mediterranean *Quercus* species (Additional file 12). All diversity estimates were largest for EST-SSRs with dinucleotide repeat motifs. However, differences were small between tri and hexanucleotide EST-SSRs in these two oaks. The same trend was observed for *Q. robur* and *Q. petraea*.

Oak genome evolution

Construction of a gene-based consensus linkage map

Individual maps were constructed from EST-SSRs (see above) and SNPs. For SNP-based markers, 105 (set 1) and 7 (set 2) candidate genes were genotyped in three mapping populations: 56 (set 1) and 4 (set 2) were localized on at least one of the six parental maps (Additional files 1 and Additional files 13). The consensus map included 381 loci (321 EST-SSRs and 60 SNP-based markers), 19 of which (18 EST-SSRs and 1 SNP) were considered to be paralogous and were assigned to different bins (on different LGs) on different individual maps. The mean number of markers mapped per LG was 32, with a maximum of 72 markers mapped for LG2 and a minimum of 22 for LG7, LG10 and LG11. Markers were assigned to 86-10 cM bins within each of the 12 linkage groups of the consensus map, for the

identification of regions orthologous to regions from *Arabidopsis*, grape, poplar, *Medicago*, and soybean.

Synteny and duplication analysis

Independent intraspecific (*i.e.* paralogs) and interspecific (*i.e.* orthologs) comparisons are required for the precise inference of paralogous or orthologous gene relationships between oak and other eudicots and to determine the precise history of oak evolution from the known ancestor of eudicot genomes.

Using the alignment parameters and statistical tests described in the methods section, we analyzed the syntenic relationships between oak, *Arabidopsis*, poplar, *Medicago*, grape and soybean [62]. Using grape as the reference genome — this species being the closest relative of the eudicot ancestor, with a genome structured into seven protochromosomes (color code used for chromosome painting) —124 orthologous relationships were identified (Figure 7) covering 50% of the oak genome [3]. The following chromosome-to-chromosome relationships were then established (**o** for oak and **g** for grape): o1/g17, o2/g4-g11-g14, o3/g14, o5/g12-g19, o6/g4-g5, o7/g8, o8/g6-g10-g12-g19, o10/g17, o11/g3, o12/g2-g15.

Figure 7 Syntenic relationships between oak and *Arabidopsis*, grape, poplar, *Medicago*, soybean genomes. Schematic representation of the orthologs identified between the grape chromosomes (g1 to g12) used as a reference, and the *Arabidopsis* (a1 to a5), poplar (p1 to p19), *Medicago* (m1 to m8), soybean (s1 to s20) and oak (o1 to o12) chromosomes. Each line represents an orthologous gene. The seven different colors used to represent the blocks reflect the eudicot origin from the seven ancestral chromosomes

Five major duplications were also identified, covering 28% of the genome and involving the following chromosome-to-chromosome relationships: o1-o2-o10 (yellow), o6-o11 (green), o3-o6 (purple), o7-o8 (brown), o5-o8 (red) (Figure 8).

Figure 8 Duplication relationships within the oak genome. The 5 major interchromosomal duplications in oak are illustrated. Each line represents a duplicated gene. The different colours reflect the origin of the eudicots from the seven ancestral chromosomes. Duplications were visualized using the *circos* software (<http://mkweb.bcgsc.ca/circos/>)

The integration of independent analyses of duplications within and synteny between the five major eudicot genomes led to the precise characterization in oak of five of the seven paleoduplications recently identified as the basis of the definition of seven ancestral chromosomal groups in eudicots [63]. These ancestral shared duplications were found on the following chromosome-pair combinations in oak, the locations of the seven ancestral paleoduplications in grape also being indicated : g1-g14-g17/o1-o2-o10, g2-g15-g12-g16/[not identified in oak, g3-g4-g7-g18/o6-o11, g4-g9-g11/is partially fused into o2], g5-g7-g14/o3-o6, g6-g8-g13/o7-o8, g10-g12-g19/o5-o8. Thus, five of the seven previously identified ancestral shared duplications are characterized here for the first time in oak. Based on the ancestral and lineage-specific duplications already reported for eudicots, an evolutionary scenario can be developed in which the 12 oak chromosomes evolve from the seven chromosomes of the eudicot ancestor or, more precisely, from the 21 chromosomes resulting from polyploidization of the paleohexaploid intermediate (Figure 9). We suggest that at least eight major ancestral chromosome fusions (Cf) occurred to yield the current 12-chromosome

structure, and that this process involved an intermediate ancestor that also had 12 chromosomes (Figure 9).

Figure 9 Oak genome paleohistory. The oak chromosomes are represented with a seven colour code to illuminate the evolution of segments from a common ancestor with seven chromosomes (A1-A7). The lineage specific shuffling events (such as chromosome fusion, CF) that have shaped the modern oak karyotype from the $n = 7$ or 21 ancestors are mentioned on the figure

Discussion

Our results provide new biological information about certain features of oak EST-SSRs, the benefits of linkage mapping with multiple pedigrees, the macrosynteny between two interfertile oak species (*Q. robur* and *Q. petraea*) and between two closely related genera (*Quercus* and *Castanea*), and about the evolution of the oak genome from the ancestor of the eudicot genome.

Characteristics of oak EST-SSRs

As reported in other species [64], [9], dinucleotide-SSRs (di-SSRs) occurred preferentially within UTR regions, whereas trinucleotide-SSRs (tri-SSRs) that do not interfere with the reading frame occurred mostly in the coding regions of oak ESTs. The rate of polymorphism was also higher for di-SSR loci than for tri-SSR loci (72% vs. 65% (Table 3)), suggesting that SSRs occurring within UTRs are more polymorphic than those in coding regions. The number of alleles was also larger for di-SSR loci than for tri-SSR loci (60% of di-SSRs presented three or four alleles per locus, versus 37% of tri-SSRs (Table 3)). A similar pattern has been reported for other species, such as castor bean [65] and cotton [66].

EST-SSRs were highly transferable between Fagaceae species, consistent with findings for other dicots, such as *Prunus* [13], *Camellia* [67], *Citrus* [15] and other species (reviewed in [10]), demonstrating a higher degree of transferability across taxonomic boundaries for EST-SSR markers than for genomic SSRs [68]. As expected, the transferability of *Quercus* EST-SSRs decreased with increasing phylogenetic distance between the species concerned. Furthermore, more than 75% of EST-SSR markers displayed high levels of genetic diversity in natural populations of *Q. robur* and *Q. petraea*. Thus, EST-SSR loci can generate sufficient polymorphism to constitute a valuable source of functional SSR markers for population genetic studies within the Fagaceae. As a proof of concept, we used two other *Quercus* species (*Q. faginea* and *Q. pyrenaica*) to provide the foundations for the use of a set of EST-SSR markers for comparative population genetic studies of the almost 20 species of deciduous oaks in the Mediterranean region. The high transferability rates into such species and the elevated polymorphisms grant the use of our set of EST-SSRs for such purposes.

Linkage mapping with multiple pedigrees

Mapping based on multiple segregating populations has several advantages over mapping based on a single pedigree. First, such strategies make it possible to map much larger numbers of markers. In this study, 274 loci were mapped in the most polymorphic mapping population (P1), but the analysis of four more pedigrees made it possible to map another 145 loci. The L-shaped distribution of the number of markers common to the different

populations (Figure 4) clearly demonstrates that the number of polymorphic markers suitable for mapping increases with the number of pedigrees considered. A consensus map for oak is currently being constructed on a much larger scale, with SNP-based markers genotyped in four oak pedigrees with a total of 1,100 offspring. The addition of several thousand gene-based markers will provide a valuable tool for the alignment of genomic scaffolds from the oak genome (which is currently being sequenced) with a linkage map, with a view to establishing pseudochromosomes.

Second, based on comparisons of the positions of the mapped markers in the various populations, we identified 26 loci (6%) with different linkage group positions in different populations (25 assigned to two LGs and one assigned to three LGs), suggesting that different paralogs were indeed amplified in different genetic backgrounds, probably due to nucleotide variability at priming sites. In most cases, the discrepancies observed concerned parental maps for different pedigrees, but no such trend was identified concerning the species origin of the paralogous loci. Interestingly, eight of the 16 annotated sequences corresponding to proteins of known function belong to multiple gene families (e.g. ribosomal, RNA-binding, thioredoxin, O-methyl transferase proteins).

Finally, the establishment of linkage maps for multiple pedigrees within a species is also a prerequisite for multiple pedigree-based QTL detection strategies aiming to identify and validate QTLs in a broad genetic background [69-73]. To this end, a total of 100 EST-SSRs evenly spaced and common to the six parental maps of P1, P2 and P3 have been chosen and will be genotyped in 150 to 300 F1s for the identification of QTLs for adaptive traits (e.g. bud phenology - unpublished results).

Comparative mapping of oak species that hybridize naturally: *Q. robur* and *Q. petraea*, and beyond

We present here the first genetic maps for two interfertile white oak species, making it possible to trace chromosomal changes [74]. A relatively large proportion (323/397; 81%) of the loci mapped was common to at least two parental maps. The integrated species maps of 397 loci covered all 12 LGs, with a mean distance between markers of 2.60 cM for *Q. robur* and 2.91 cM for *Q. petraea*. As expected, the total length of the integrated maps was greater than the length of the individual maps, as previously reported for *Vitis* [75], *Lactuca* [72] and *Picea* [76]. These results suggest that integrated maps probably cover regions not covered by the individual maps, in distal positions on the chromosomes. The genome lengths of the two consensus maps were very different — 933 cM for *Q. robur* and 767 cM for *Q. petraea* — despite the similar physical size of the two genomes [77]. This discrepancy may reflect differences in recombination rates between *Q. robur* and *Q. petraea* or differences in recombination rate in these particular genotypes. The overall macrocollinearity between these two species maps was high, with little shuffling of marker order between homologous LGs. Some local inconsistencies in marker order were observed, as reported for other species [72,75,78,79], but no duplication or major chromosomal rearrangement (inversion, translocation) was characterized. This high degree of collinearity should facilitate the identification of genomic islands involved in species differentiation [80,81].

A comparison of the consensus maps of *Quercus* and *Castanea* revealed a high degree of collinearity and synteny between the 12 homologous linkage groups, despite the divergence of their lineages 70 million years ago [82]. A search for genes underlying similar QTLs,

based on comparative mapping, could be considered, making use of the sequencing data available for *Castanea*.

Oak genome evolution

We have identified precise chromosomal relationships within the oak genome corresponding to the ancestral hexaploidization event reported in eudicots [83]. This made it possible to propose an evolutionary scenario describing the development of the modern oak genome from the ancestral eudicot karyotype over the last 100 million years. Such information is of prime importance for gene cloning and, for example, detecting gene function by complementing *Arabidopsis* mutants. The ancestral hexaploidization event in eudicots generated two additional copies for any ancestral gene function considered [3]. In modern eudicot species, these three homologous copies may have or may not have retained the same function as the ancestral gene. It is thus of the utmost importance, when cloning candidate genes on the basis of synteny (*i.e.* translational genomics approach with the use of reference (*i.e.* sequenced) genomes), to investigate all the duplicated copies, which may prove to be redundant or complementary in terms of their function and the phenotype they confer [84].

Conclusion

This study provides new insights into the distribution of EST-derived SSRs between five mapping populations of two oak species and the benefits of using multiple pedigrees for the construction of consensus maps. We mapped 397 loci, 81% of which were common to at least two different mapping populations. The level of conserved macrosynteny was very high between *Q. robur* and *Q. petraea*, as well as between *Quercus* spp. and *Castanea sativa*, opening perspectives for QTL validation across phylogenetically related species as demonstrated by Faivre Rampant et al. [85].

Functional characterization of these EST-derived oak SSRs revealed many genes with biological, cellular and molecular functions. Their position is now being compared to that of already mapped QTLs and suggest putative positional candidate genes that are being used as anchor markers to fine map large effect QTLs (e.g. for water use efficiency and bud burst) and identify the underlying sub genomic region using the BAC libraries available for *Quercus robur* [85].

Authors' contributions

CB1, EC, OG, JD, HPK, PGG: developing and genotyping EST-SSRs in oak mapping populations; FB, GGV, CS, FV, CM: EST-SSR transferability in the Fagaceae and Nothofagaceae, diversity analysis in natural populations of oaks, and contribution to the genotyping of oak and chestnut pedigrees; PGG: transferability and polymorphism analysis of EST-SSRs in the sub-mediterranean oaks; CB1, EC, CP: linkage mapping; EC, FA, CB2: SNP analysis; FM, JS, CP analysis of oak genome evolution; FV, GR: plant material preparation; JPS: database entries and analysis, CB1, CP, JS, manuscript preparation, CB1, CP, AK: project design; CP, AK: funding and overall supervision. All the authors have read and approved the manuscript.

Acknowledgments

The study was funded by the European Commission under the FP6 program (FP6-2004-GLOBAL-3, Network of Excellence EVOLTREE "Evolution of Trees as Drivers of Terrestrial Biodiversity", No. 016322) and FP7 program (FP7-244096, Foresttrac: Forest ecosystem genomics Research: supportIng Transatlantic Cooperation). Studies of transferability to *Q. faginea* - *Q. pyrenaica* were supported by grant CGL2009-07670 from the Ministry of Science and Innovation (Spain) to PGG. CS was supported by a Consejo Nacional de Investigaciones Científicas y Técnicas (CONICET, Argentina) grant. This paper is dedicated to Marie Pierre Reviron. Marie Pierre's support was immense throughout the Evoltree workplan, and the collaborative mapping activities of this project were substantially facilitated by her contribution.

References

1. Bernardo R: **Molecular markers and selection for complex traits in plants: Learning from the last 20 years.** *Crop Science* 2008, **48**(5):1649–1664.
2. Bergelson J, Roux F: **Towards identifying genes underlying ecologically relevant traits in *Arabidopsis thaliana*.** *Nat Rev Genet* 2010, **11**:867–879.
3. Abrouk M, Murat F, Pont C, Messing J, Jackson S, Faraut T, Tannier E, Plomion C, Cooke R, Feuillet C, Salse J: **Paleogenomics of plants: modern species synteny-based modelling of extinct ancestors.** *Trends Plant Sci* 2010, **15**:479–487.
4. Troggio M, Malacarne G, Coppola G, Segala C, Dustin A, Cartwright DA, Pindo M, Stefanini M, Mank R, Moroldo M, Morgante M, Grando MS, Velasco R: **A Dense Single-Nucleotide Polymorphism-Based Genetic Linkage Map of Grapevine (*Vitis vinifera* L.) Anchoring Pinot Noir Bacterial Artificial Chromosome Contigs.** *Genetics* 2007, **176**:2637–2650.
5. Tanksley SD, Martin W, Ganai MW, Martin GD: **Chromosome landing: a paradigm for map-based gene cloning in plants with large genomes.** *Trends Genet* 1995, **11**:63–68.
6. Remington DL, Ungerer MC, Purugganan MD: **Map-based cloning of quantitative trait loci: progress and prospects.** *Genet Res* 2001, **78**:213–218.
7. Lefebvre-Pautigny F, Wu F, Philippot M, Rigoreau M, Priyono, Zouine M, Frasse P, Bouzayen M, Broun P, Pétiard V, Tanksley SD, Crouzillat D: **High resolution synteny maps allowing direct comparisons between the coffee and tomato genomes.** *Tree Genetics Genomes* 2010, **6**(4):565–577.
8. Muñoz A, Zheng C, Zhu Q, Albert VA, Rounsley S, Sankoff D: **Scaffold filling, contig fusion and comparative gene order inference.** *BMC Bioinformatics* 2010, **11**:304. doi:10.1186/1471-2105-11-304.
9. Studer B, Asp T, Frei U, Hentrup S, Meally H, Guillard A, Barth S, Muylle H, Roldán-Ruiz I, Barre P, *et al*: **Expressed sequence tag-derived microsatellite markers of perennial ryegrass (*Lolium perenne* L.).** *Mol Breeding* 2008, **21**:533–548.

10. Ellis JR, Burke JM: **EST-SSR as a resource for population genetic analyses.** *Heredity* 2007, **99**:125–132.
11. Fouet O, Allegre M, Argout X, Jeanneau M, Lemainque A, Pavék S, Boland A, Risterucci AM, Looor G, Tahí M, Sabau X, Courtois B, Lanaud C: **Structural characterization and mapping of functional EST-SSR markers in *Theobroma cacao*.** *Tree Genetics and Genomes* 2011, **7**:799–817.
12. Moccia M, Oger-Desfeux C, Marais G, Widmer AA: **White Champion (*Silene latifolia*) floral expressed sequence tag (EST) library: annotation, EST-SSR characterization, transferability, and utility for comparative mapping.** *BMC Genomics* 2009, **10**:243–257.
13. Mnejja M, Garcia-Mas J, Audergon JM, Arús P: **Prunus microsatellite marker transferability across rosaceous crops.** *Tree Genetics and Genomes* 2010, **10**:689–700.
14. Xie WG, Zhang XQ, Cai HW, Liu W, Peng Y: **Genetic diversity analysis and transferability of cereal EST-SSR markers to orchardgrass (*Dactylis glomerata* L.).** *Biochem Syst Ecol* 2010, **38**(4):740–749.
15. Luro F, Costantino G, Terol J, Argout X, Allario T, Wincker P, Talon M, Ollitrault P, Morillon R: **Transferability of the EST-SSRs developed on Nules clementine (*Citrus clementina* Hort ex Tan) to other Citrus species and their effectiveness for genetic mapping.** *BMC Genomics* 2008, **9**:287–300.
16. Kremer A, Vinceti B, Alia R, Burczyk J, Cavers S, Degen D, Finkeldey R, Fluch S, Gömöry D, Gugerli F, Koelewijn HP, Koskela J, Lefèvre F, Morgante M, Mueller-Starck G, Plomion C, Taylor G, Turok J, Savolainen O, Ziegenhagen B: **Forest Ecosystem genomics and adaptation: Evoltree Conference Report.** *Trees Genetics and Genomes* 2011, **7**:869–875.
17. Barreneche T, Bodénès C, Lexer C, Trontin JF, Fluch S, Streiff R, Plomion C, Roussel G, Steinkellner H, Burg K, *et al*: **A genetic linkage map of *Quercus robur* L. (pedunculate oak) based on RAPD, SCAR, microsatellite, minisatellite, isozyme and 55 rDNA markers.** *Theor Appl Genet* 1998, **97**(7):1090–1103.
18. Casasoli M, Mattioni C, Cherubini M, Villani F: **A Genetic Linkage map of European chestnut (*Castanea sativa* Mill.) based on RAPD, ISSR and isozyme markers.** *Theor Appl Genet* 2001, **102**(8):1190–1199.
19. Kubisiak TL, Hebard FV, Nelson CD, Zhang J, Bernatzky R, Huang H, Anagnostakis SL, Doudrick RL: **Molecular mapping of resistance to blight in an interspecific cross in the genus *castanea*.** *Phytopathology* 1997, **87**(7):751–759.
20. Scalfi M, Troggio M, Piovani P, Leonardi S, Magnaschi G, Vendramin GG, Menozzi P: **A RAPD, AFLP and SSR linkage map, and QTL analysis in European beech (*Fagus sylvatica* L.).** *Theor Appl Genet* 2004, **108**(3):433–441.
21. Scotti-Saintagne C, Bodénès C, Barreneche T, Bertocchi E, Plomion C, Kremer A: **Detection of quantitative trait loci controlling bud burst and height growth in *Quercus robur* L.** *Theor Appl Genet* 2004, **109**(8):1648–1659.

22. Derory J, Scotti-Saintagne C, Bertocchi E, Le Dantec L, Graignic N, Jauffres A, Casasoli M, Chancerel E, Bodénès C, Alberto F, Kremer A: **Contrasting correlations between diversity of candidate genes and variation of bud burst in natural and segregating populations of European oaks.** *Heredity* 2010, **104**:438–448.
23. Gailing O, Langenfeld-Heyser R, Polle A, Finkeldey R: **QTL loci affecting stomatal density and growth in a *Quercus robur* progeny: implications for the adaptation to changing environments.** *Glob Chang Biol* 2008, **14**:1934–1946.
24. Parelle J, Zapater M, Scotti-Saintagne C, Kremer A, Jolivet Y, Dreyer E, Brendel O: **Quantitative trait loci of tolerance to waterlogging in a European oak (*Quercus robur* L.): physiological relevance and temporal effect patterns.** *Plant Cell Environ* 2007, **30**(4):422–434.
25. Brendel O, Le Thiec D, Scotti-Saintagne C, Bodénès C, Kremer A, Guehl JM: **Quantitative trait loci controlling water use efficiency and related traits in *Quercus robur* L.** *Tree Genet Genomes* 2008, **4**(2):263–278.
26. Barreneche T, Casasoli M, Russell K, Akkak A, Meddour H, Plomion C, Villani F, Kremer A: **Comparative mapping between *Quercus* and *Castanea* using simple-sequence repeats (SSRs).** *Theor Appl Genet* 2004, **108**(3):558–566.
27. Casasoli M, Derory J, Morera-Dutrey C, Brendel O, Porth I, Guehl JM, Villani F, Kremer A: **Comparison of Quantitative Trait Loci for Adaptive Traits Between Oak and Chestnut Based on an Expressed Sequence Tag Consensus Map.** *Genetics* 2006, **172**:533–546.
28. Casasoli M, Pot D, Plomion C, Monteverdi MC, Barreneche T, Lauteri M, Villani F: **Identification of QTLs affecting adaptive traits in *Castanea sativa* Mill.** *Plant Cell Env* 2004, **27**(9):1088–1101.
29. Durand J, Bodénès C, Chancerel E, Frigerio JM, Vendramin G, Sebastiani F, Buonamici A, Gailing O, Koelewijn HP, Villani F, Mattioni C, Cherubini M, Goicoechea PG, Herrán A, Ikarán Z, Cabané C, Ueno S, Alberto F, Dumoulin PY, Guichoux E, de Daruvar A, Kremer A, Plomion C: **A fast and cost-effective approach to develop and map EST-SSR markers: oak as a case study.** *BMC Genomics* 2010, **11**:570–583.
30. Grattapaglia D, Sederoff R: **Genetic linkage maps of *Eucalyptus grandis* and *Eucalyptus urophylla* using a pseudo-testcross: mapping strategy and RAPD markers.** *Genetics* 1994, **137**(4):1121–1137.
31. Berlin S, Lagercrantz U, von Arnold S, Öst T, Rönnerberg-Wästljung AC: **High-density linkage mapping and evolution of paralogs and orthologs in *Salix* and *Populus*.** *BMC Genomics* 2010, **11**:129–143.
32. McConnell M, Mamidi S, Lee R, Chikara S, Rossi M, Papa R, McClean P: **Syntenic relationships among legumes revealed using a gene-based genetic linkage map of common bean (*Phaseolus vulgaris* L.).** *Theor Appl Genet* 2010, **121**(6):1103–1116.

33. Ueno S, Le Provost G, Léger V, Klopp C, Noirot C, Frigerio J-M, Salin F, Salse J, Abrouk M, Murat F, Brendel O, Derory J, Abadie P, Leger P, Cabane C, Barré A, de Daruvar A, Couloux A, Wincker P, Reviron M-P, Kremer A, Plomion C: **Bioinformatic analysis of ESTs collected by Sanger and pyrosequencing methods for a keystone forest tree species: oak.** *BMC Genomics* 2010, **11**:650–674.
34. The Gene Ontology Consortium: **Gene ontology: tool for the unification of biology.** *Nat Genet* 2000, **25**(1):25–29.
35. Conesa A, Götz S, García-Gómez JM, Terol J, Talón M, Robles M: **Blast2GO: a universal tool for annotation, visualization and analysis in functional genomics research.** *Bioinformatics* 2005, **15**(21(18)):3674–3680.
36. Shamir R, Maron-Katz A, Tanay A, Linhart C, Steinfeld I, Sharan R, Shiloh Y, Elkon R: **EXPANDER an integrative program suite for microarray data analysis.** *BMC Bioinformatics* 2005, **6**:232–244.
37. Dow BD, Ashley MV, Howe HF: **Characterization of highly variable (GA/CT)_n microsatellites in the bur oak, *Quercus macrocarpa*.** *Theor Appl Genet* 1995, **91**:137–141.
38. Isagi Y, Suhandono S: **PCR primers amplifying microsatellite loci of *Quercus myrsinifolia* Blume and their conservation between oak species.** *Mol Ecol* 1997, **6**:897–899.
39. Steinkellner H, Fluch S, Turetschek E, Lexer C, Streiff R, Kremer A, Burg K, Glössl J: **Identification and characterization of (GA/CT)_n- microsatellite loci from *Quercus petraea*.** *Plant Mol Biol* 1997, **33**(6):1093–1096.
40. Kampf S, Lexer C, Glössl J, Steinkellner H: **Characterization of (GA)_n microsatellite loci from *Quercus robur*.** *Hereditas* 1998, **129**:183–186.
41. Lexer C, Heinze B, Steinkellner H, Kampf S, Ziegenhagen B, Glössl J: **Microsatellite analysis of maternal half-sib families of *Quercus robur*, pedunculate oak: detection of seed contaminations and inference of the seed parents from the offspring.** *Theor Appl Genet* 1999, **99**:185–191.
42. Aldrich PR, Michler CH, Weilin S, Romero-Severson J: **Microsatellite markers for northern red oak (Fagaceae: *Quercus rubra*).** *Molecular Ecology Notes* 2002, **2**(4):472–474.
43. Buck EJ, Hadonou M, James CJ, Blakesley D, Russell K: **Isolation and characterization of polymorphic microsatellites in European chestnut (*Castanea sativa* Mill.).** *Mol. Ecol. Notes* 2003, **3**:239–241.
44. Marinoni D, Akkac A, Bounous G, Edwards KJ, Botta R: **Development and characterization of microsatellite markers in *Castanea sativa* (Mill.).** *Mol. Breed* 2003, **11**:127–136.
45. Schuelke M: **An economic method for the fluorescent labeling of PCR fragments.** *Nat Biotechnol* 2000, **18**(2):233–234.

46. Van Ooijen JW: **JoinMap® 4**. In *Software for the calculation of genetic linkage maps in experimental populations*. Edited by Kyazma BV. Netherlands: Wageningen; 2006.
47. Voorrips RE: **MapChart: Software for the graphical presentation of linkage maps and QTLs**. *J Hered* 2002, **93**(1):77–78.
48. Hulbert SH, Ilott TW, Legg EJ, Lincoln SE, Lander ES, Michelmore RW: **Genetic analysis of the fungus, *Bremia lactucae*, using restriction fragment length polymorphisms**. *Genetics* 1988, **120**:947–958.
49. Chakravarti A, Lasher L, Reefer JE: **A maximum likelihood method for estimating genome length using genetic linkage data**. *Genetics* 1991, **128**:175–182.
50. Goudet J: *FSTAT, a program to estimate and test gene diversities and fixation indices (version 2.9.3)*. 2001. Available from <http://www.unil.ch/izea/software/fstat.html>. Updated from Goudet (1995).
51. Alberto F, Niort J, Derory J, Lepais O, Vitalis R, Galop D, Kremer A: **Population differentiation of sessile oak at the altitudinal front of migration in the French Pyrenees**. *Mol Ecol* 2010, **19**(13):2626–2639.
52. Derory J, Leger P, Garcia V, Schaeffer J, Hauser MT, Salin F, Luschnig C, Plomion C, Glossl J, Kremer A: **Transcriptome analysis of bud burst in sessile oak (*Quercus petraea*)**. *New Phytol* 2006, **170**(4):723–738.
53. Lepoittevin C, Frigerio JM, Garnier-Géré P, Salin F, Cervera MT, Vornam B, Harvengt L, Plomion C: **In vitro vs in silico detected SNPs for the development of a genotyping array: what can we learn from a non-model species?** *PLoS One* 2010, **5**(6):e11034.
54. Alberto FJ, Derory J, Boury C, Frigerio JM, Zimmermann NE, Kremer A: *Imprints of natural selection along environmental gradients in phenology related genes of *Quercus petraea**. submitted.
55. Wegrzyn JL, Lee JM, Liechty J, Neale DB: **PineSAP—sequence alignment and SNP identification pipeline**. *Bioinformatics* 2009, **25**(19):2609–2610.
56. Orita M, Iwahana H, Kanazawa H, Hayashi K, Sekiya T: **Detection of polymorphisms of human DNA by gel electrophoresis as single-strand conformation polymorphism**. *Proc Natl Acad Sci USA* 1989, **86**:2766–2770.
57. Hsu TM, Chen X, Duan S, Miller RD, Kwok PY: **Universal SNP genotyping assay with fluorescence polarization detection**. *Biotechniques* 2001, **31**:560–570.
58. Plomion C, O'Malley DM: **Recombination rate differences for pollen parents and seed parents in pine**. *Heredity* 1996, **77**:341–350.
59. Kumar S, Tamura K, Nei M: **Mega3: integrated software for Molecular Evolutionary Genetics Analysis and sequence alignment**. *Brief Bioinform* 2004, **5**:150–163.

60. Gaut BS, Morton BR, McCaig BC, Clegg MT: **Substitution rate comparisons between grasses and palms: Synonymous rate differences at the nuclear gene *Adh* parallel rate differences at the plastid gene *rbcL*.** *Proc. Natl. Acad. Sci. USA* 1996, **93**:10274–10279.
61. SanMiguel P, Gaut BS, Tikhonov A, Nakajima Y, Bennetzen JL: **The paleontology of intergene retrotransposons of maize.** *Nat Genet* 1998, **20**:43–45.
62. Salse J, Abrouk M, Murat F, Masood Quraishi U, Feuillet C: **Improved standards and new comparative genomics tools provide new insights into grasses paleogenomics.** *Briefings in Bioinf* 2009, **10**(6):619–630.
63. Salse J, Abrouk M, Bolot S, Guilhot N, Courcelle E, Faraut T, Waugh R, Close TJ, Messing J, Feuillet C: **Reconstruction of monocotyledonous proto-chromosomes reveals faster evolution in plants than in animals.** *PNAS USA* 2009, **106**:14908–14913.
64. Blanca J, Cañizares J, Roig C, Ziarsolo P, Nuez F, Pico B: **Transcriptome characterization and high throughput SSRs and SNPs discovery in *Curcubita pepo* (Cucurbitaceae).** *BMC Genomics* 2011, **12**:104–119.
65. Qiu L, Yang C, Yang JB, Liu A: **Exploiting EST databases for the development and characterization of EST-SSR markers in castor bean (*Ricinus communis* L.).** *BMC Plant Biol* 2010, **10**:278–288.
66. Yu Y, Daojun Yuan D, Liang S, Li X, Wang X, Lin Z, Zhang X: **Genome structure of cotton revealed by a genome-wide SSR genetic map constructed from a BC₁ population between *Gossypium hirsutum* and *G. barbadense*.** *BMC Genomics* 2011, **12**:15–29.
67. Sharma RK, Bhardwaj P, Negi R, Mohapatra T, Ahuja PS: **Identification, characterization and utilization of unigene derived microsatellite markers in tea (*Camellia sinensis* L.).** *BMC Plant Biol* 2009, **9**:53–77.
68. Varshney RK, Graner A, Sorrells ME: **Genic microsatellite markers in plants: features and applications.** *Trends Biotechnol* 2005, **23**(1):48–55.
69. Danan S, Veyrieras JB, Lefebvre V: **Construction of a potato consensus map and QTL meta-analysis offer new insights into the genetic architecture of late blight resistance and plant maturity traits.** *BMC Plant Biol* 2011, **11**:16.
70. De Keyser E, Shu QY, Bockstaele EV, De Riek J: **Multipoint-likelihood maximization mapping on 4 segregating populations to achieve an integrated framework map for QTL analysis in pot azalea (*Rhododendron simsii* hybrids).** *BMC Mol Biol* 2010, **11**:1–21.
71. Truntzler Barrière Y, Sawkins MC, Lespinasse D, Betran J, Charcosset A, Moreau L: **Meta-analysis of QTL involved in silage quality of maize and comparison with the position of candidate genes.** *Theor Appl Genet* 2010, **121**(8):1465–1482.
72. Truco MJ, Antonise R, Lavelle D, Ochoa O, Kozik A, Witsenboer H, Fort SB, Jeuken MJW, Kesseli RV, Lindhout P, Michelmore RW, Peleman J: **A high-density, integrated genetic linkage map of lettuce (*Lactuca* spp.).** *Theor Appl Genet* 2007, **115**:735–746.

73. Blanc G, Charcosset A, Mangin B, Gallais A, Moreau L: **Connected populations for detecting quantitative trait loci and testing for epistasis: an application in maize.** *Theor Appl Genet* 2006, **113**:206–224.
74. Wu F, Tanksley SD: **Chromosomal evolution in the plant family Solanaceae.** *BMC Genomics* 2010, **11**:182–193.
75. Vezzulli S, Troglio M, Coppola G, Jermakow A, Cartwright D, Zharkikh A, Stefanini M, Grando MS, Viola R, Adam-Blondon AF, Thomas M, This P, Velasco R: **A reference integrated map for cultivated grapevine (*Vitis vinifera* L.) from three crosses, based on 283 SSR and 501 SNP-based markers.** *Theor Appl Genet* 2008, **117**:499–511.
76. Pelgas B, Bousquet J, Beauseigle S, Isabel N: **A composite linkage map from two crosses for the species complex *Picea mariana* × *Picea rubens* and analysis of synteny with other Pinaceae.** *Theor Appl Genet* 2005, **111**:1466–1488.
77. Kremer A, Casasoli M, Barreneche T, Bodénès C, Sisco P, Kubisiak T, Scalfi M, Leonardi S, Bakker EG, Buiteveld J, Romero-Severson J, Arumuganathan K, Derory J, Scotti-Saintagne C, Roussel G, Bertocchi ME, Lexer C, Porth I, Hebard F, Clark C, Carlson J, Plomion C, Koelewijn H, Villani F: **Fagaceae trees.** In *Genome Mapping & Molecular Breeding. Forest Trees*. Edited by Kole CR. Heidelberg, New York, Tokyo: Springer-Verlag, Berlin; 2007:16–187. 5.
78. N'Diaye A, Van de Weg WE, Kodde LP, Koller B, Dunemann F, Thiermann M, Tartarini S, Gennari F, Durel CE: **Construction of an integrated consensus map of the apple genome based on four mapping populations.** *Tree Genet Genomes* 2008, **4**:727–743.
79. Doligez A, Adam-Blondon AF, Cipriani G, Di Gaspero G, Laucou V, Merdinoglu D, Meredith CP, Riaz S, Roux SC, This P: **An integrated SSR map of grapevine based on five mapping populations.** *Theor Appl Genet* 2006, **113**(3):369–382.
80. Saintagne C, Bodénès C, Barreneche T, Pot D, Plomion C, Kremer A: **Distribution of genomic regions differentiating oak species assessed by QTL detection.** *Heredity* 2004, **92**(1):20–30.
81. Abadie P, Roussel G, Dencausse B, Bonnet C, Bertocchi E, Louvet JM, Kremer A, Garnier-Géré P: **Strength, diversity and plasticity of postmating reproductive barriers between two hybridizing oak species (*Quercus robur* L. and *Quercus petraea* (Matt) Liebl.).** *J Evol Biol* 2011, **25**:157–173.
82. Manos PS, Z-K Zhou ZK, Cannon CH: **Systematics of Fagaceae: phylogenetic tests of reproductive trait evolution.** *International Journal of Plant Sciences* 2001, **162**:1361–1379.
83. Jaillon O, Jean-Marc Aury JM, Noel B, Policriti A, Clepet C, *et al*: **The grapevine genome sequence suggests ancestral hexaploidization in major angiosperm phyla.** *Nature* 2007, **449**:463–467.
84. Salse J: **In silico archeogenomics unveils modern plant genome organisation, regulation and evolution.** *Curr Opin Plant Biol* 2012, **15**:1–9.

85. Faivre-Rampant P, Lesur I, Boussardon C, Bitton F, Martin-Magniette ML, Bodénès C, Le Provost G, Berges H, Fluch S, Kremer A, Plomion C: **Analysis of BAC end sequences in oak, a keystone forest tree species, providing insight into the composition of its genome.** *BMC Genomics* 2011, **12**:292–305.

Additional files

Additional_file_1 as XLSX

Additional file 1 Description of SSR markers (locus name, forward and reverse primers, EST sequences, accessions number).

Additional_file_2 as DOCX

Additional file 2 Description of location of the *Q. robur* and *Q. petraea* individuals used for diversity analyses.

Additional_file_3 as JPEG

Additional file 3 Map of the populations location of *Q. faginea* and *Q. pyrenaica* used for the diversity analyses.

Additional_file_4 as DOCX

Additional file 4 Description of the SSCP method implemented on a Licor DNA sequencer.

Additional_file_5 as DOCX

Additional file 5 Comparison of Gene Ontology classification between the four sets of sequences containing EST-SSRs (CR: Coding Region, NCR: Non Coding Region, 5'UTR: 5' Un-Transcribed Region, 3'UTR: 3' Un-Transcribed Region. The relative frequencies of GO hits for oak sequences are assigned to the GO functional categories (Cellular Compounds, Molecular Function and Biological Process).

Additional_file_6 as DOCX

Additional file 6 Clustering of Blast2GO categories using the four sets of sequences containing EST (CR: Coding Region, NCR: Non Coding Region, 5'UTR: 5' Un-Transcribed Region, 3'UTR: 3' Un-Transcribed Region).

Additional_file_7 as DOCX

Additional file 7 Number of loci per LG for the five pedigrees (in () data for two partial linkage group, acc: accessory markers, tot: total number of markers).

Additional_file_8 as DOCX

Additional file 8 Map length in cM of the ten parental maps (in () are written the values obtained for two partial linkage groups).

Additional_file_9 as DOCX

Additional file 9 Estimation of genome length in cM for LOD score ranging from 3 to 5.

Additional_file_10 as XLSX

Additional file 10 Transferability results for EST-SSR loci tested on *Castanea sativa*, *Fagus*

sylvatica, *Quercus faginea*, *Q. pyrenaica*, *Q. ilex*, *Q. suber*, *Nothofagus pumilio* and *N. antarctica*.

Additional_file_11 as PDF

Additional file 11 Linkage groups homology between *Castanea* and *Quercus*.

Additional_file_12 as XLSX

Additional file 12 Diversity results for *Quercus robur*, *Q. petraea*; *Q. faginea* and *Q. pyrenaica* (LG: Linkage group, AR: allelic richness, H_o : observed heterozygosity, H_e : expected heterozygosity).

Additional_file_13 as XLSX

Additional file 13 List of the all mapped SNPs, annotation and map location.

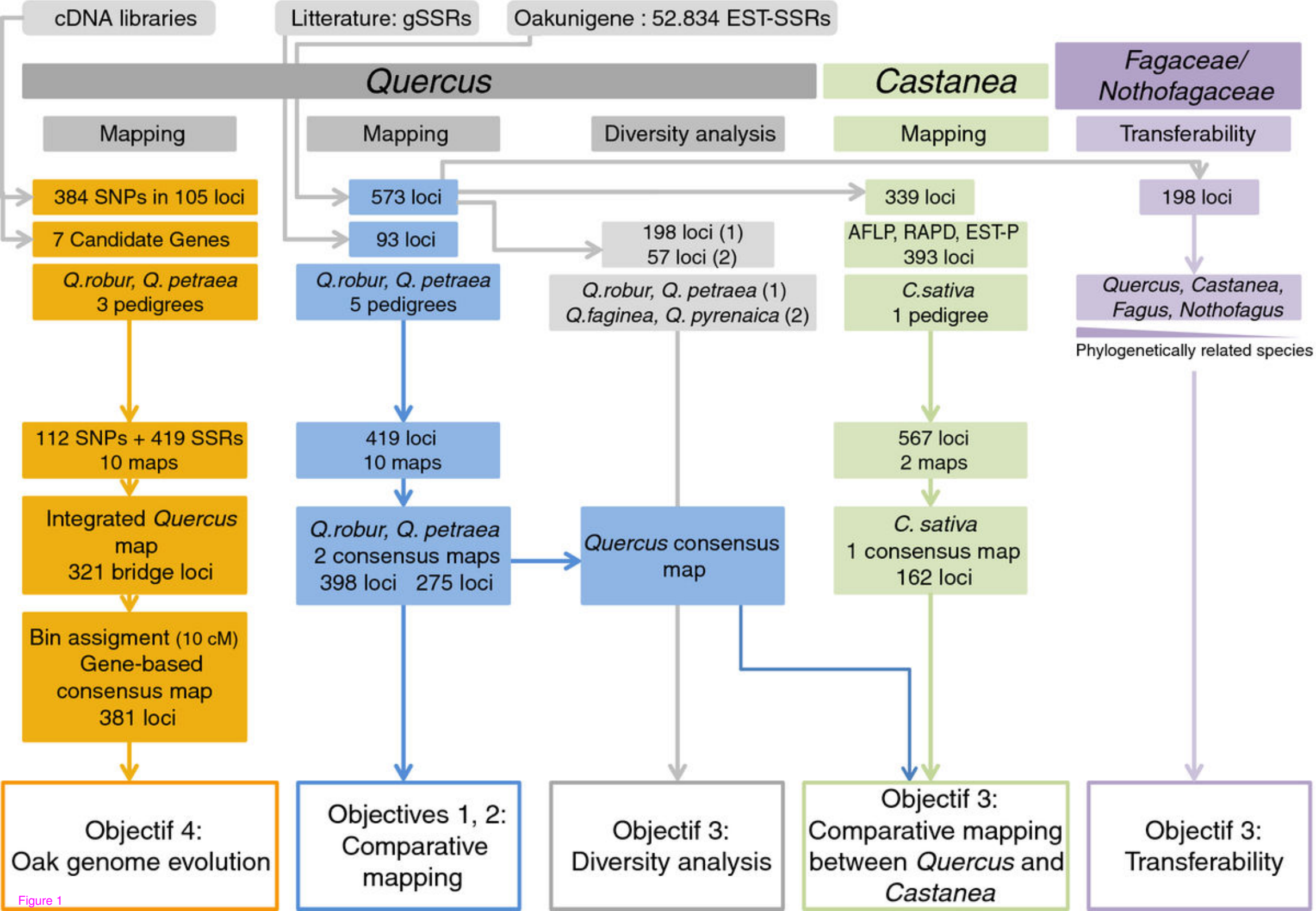


Figure 1

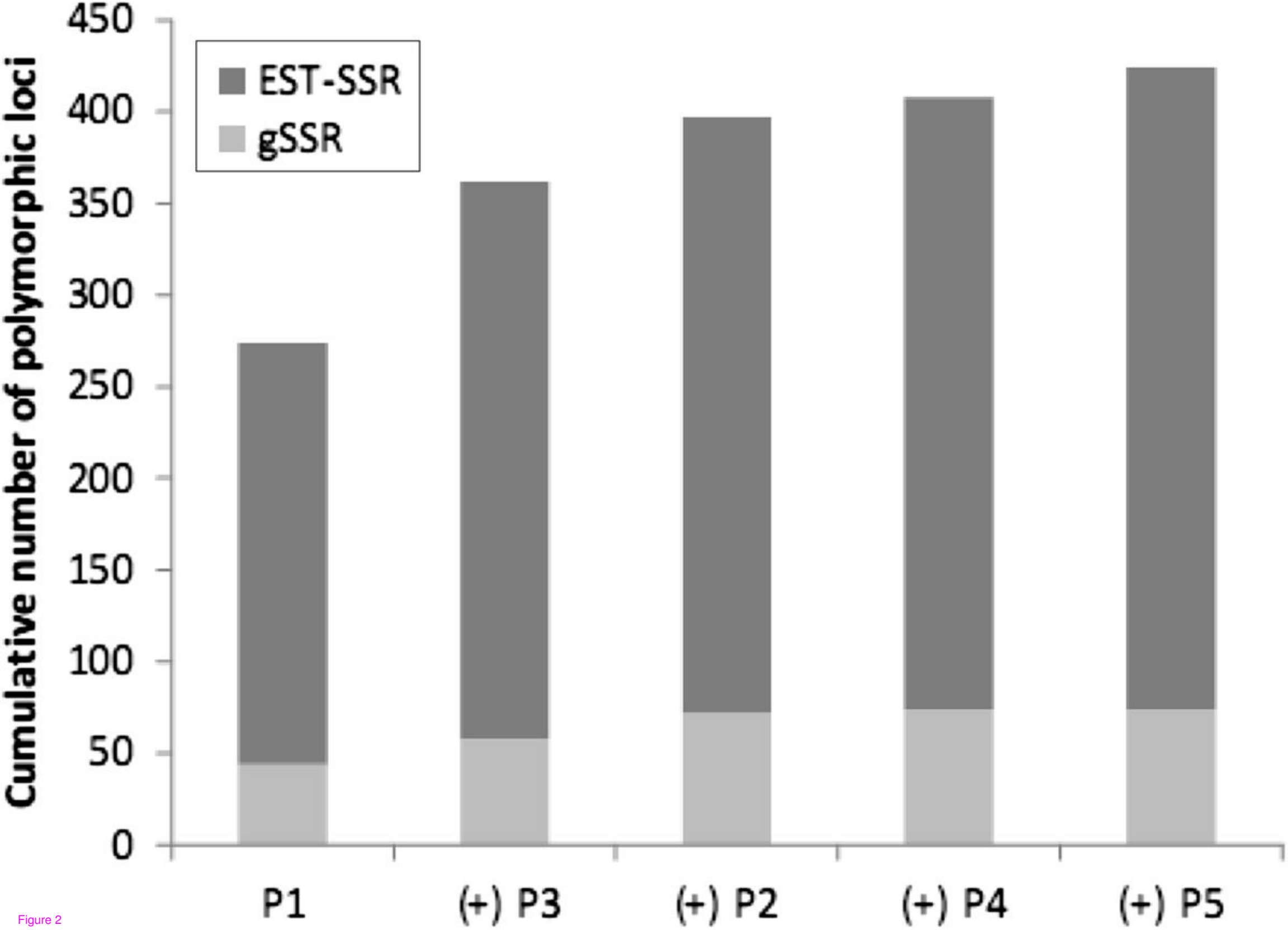


Figure 2

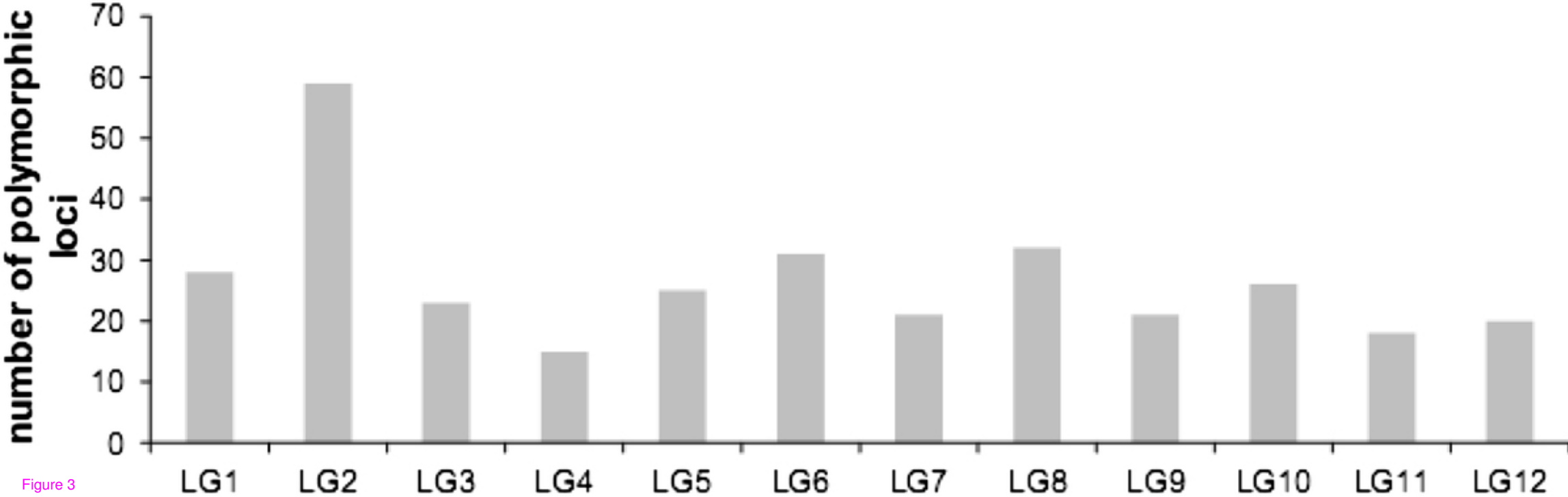


Figure 3

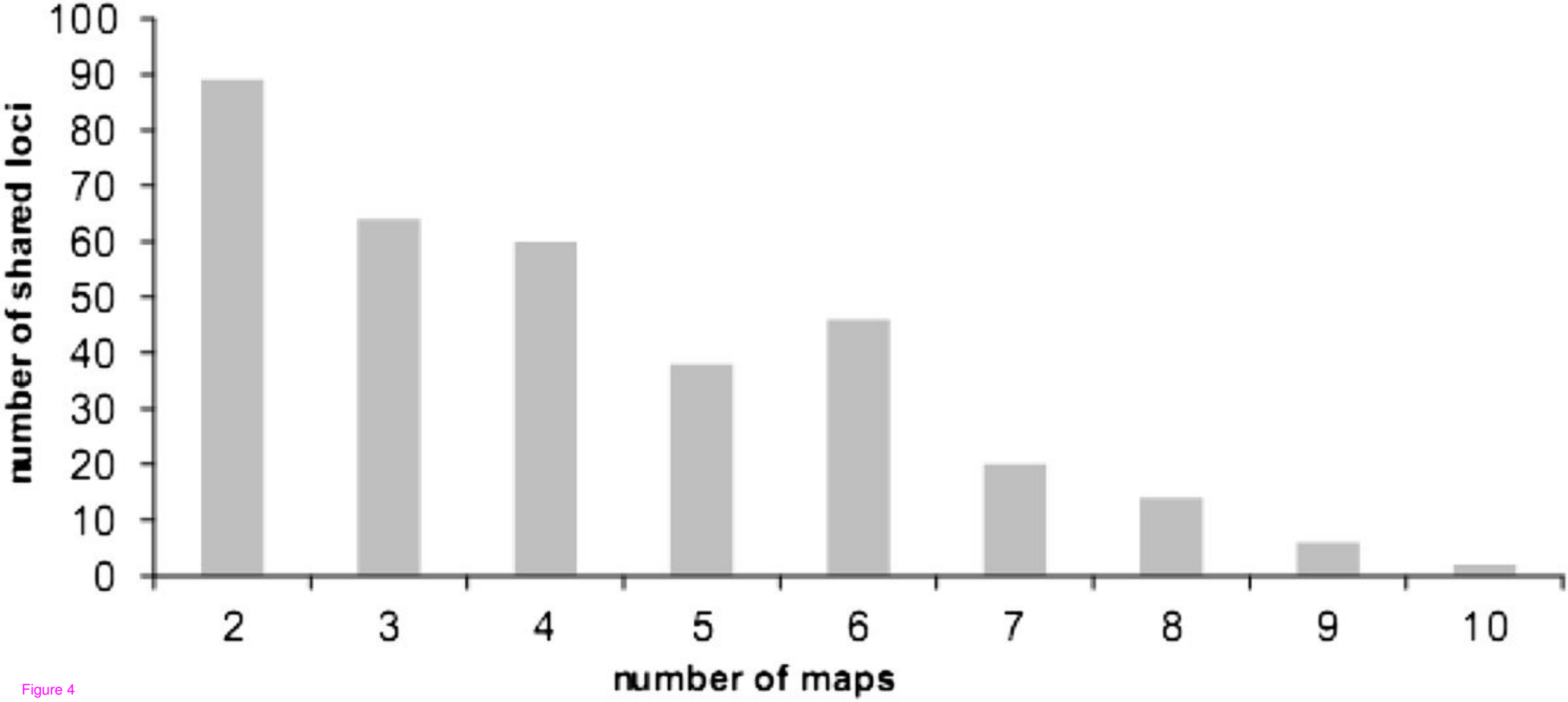


Figure 4

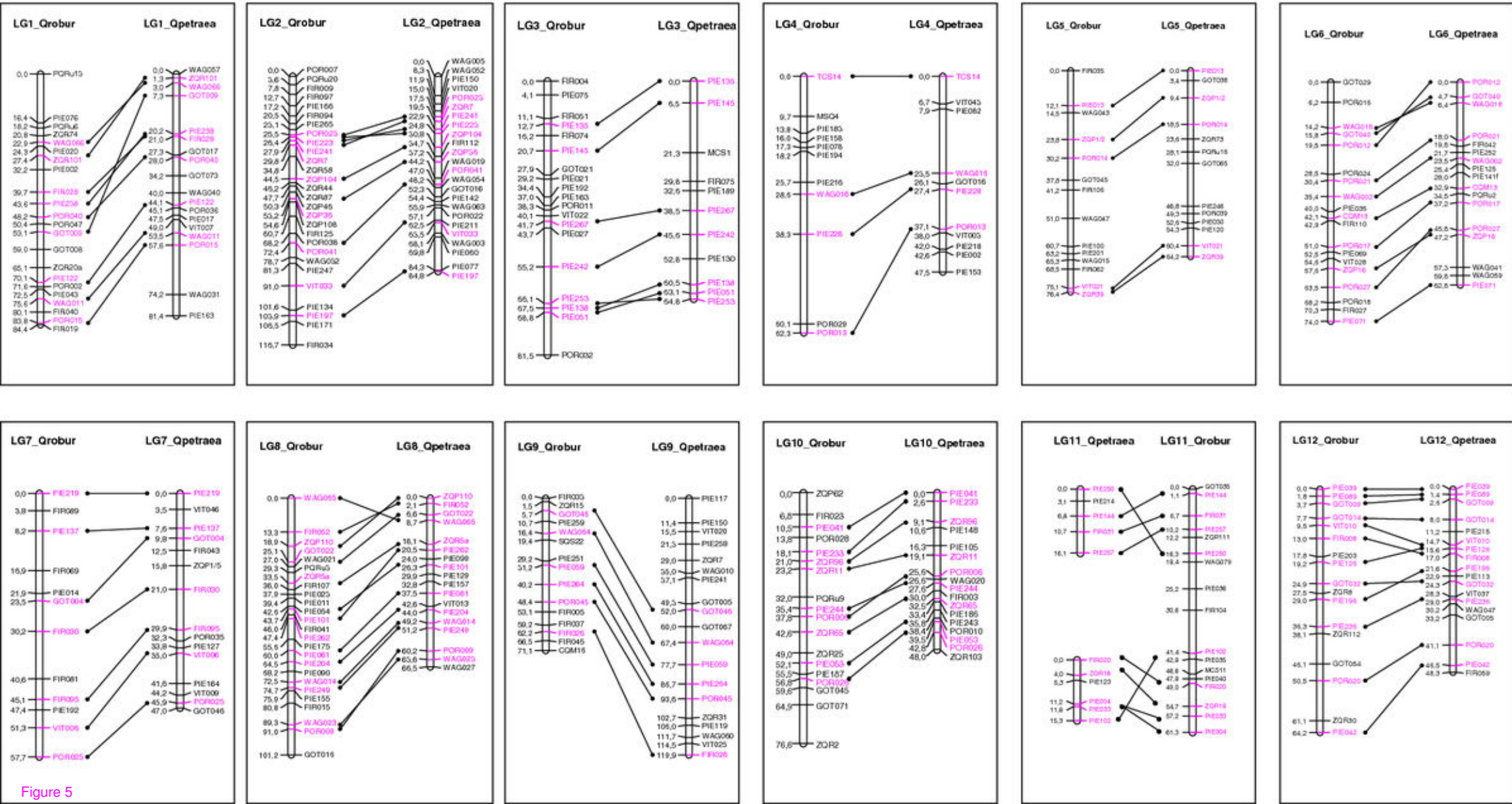
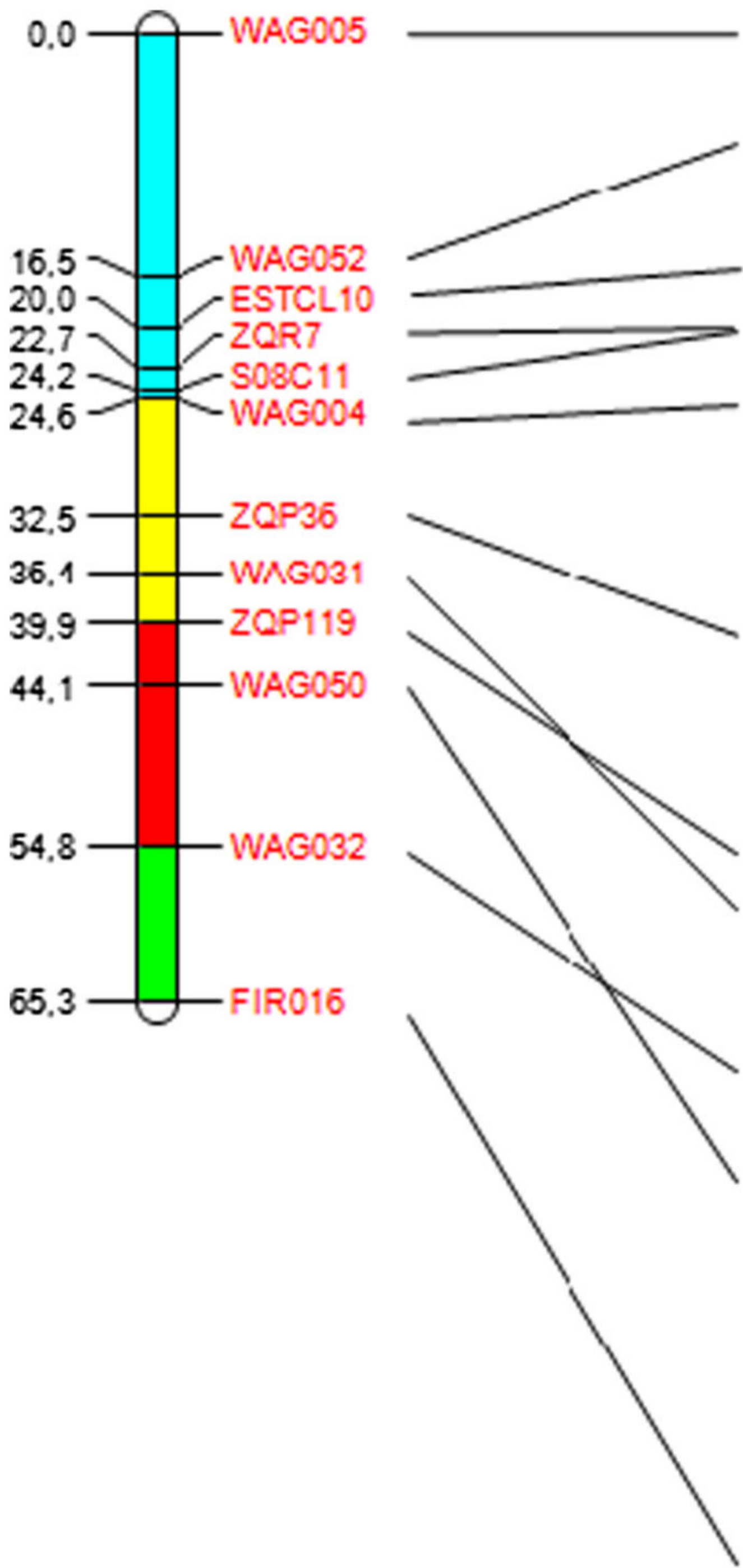
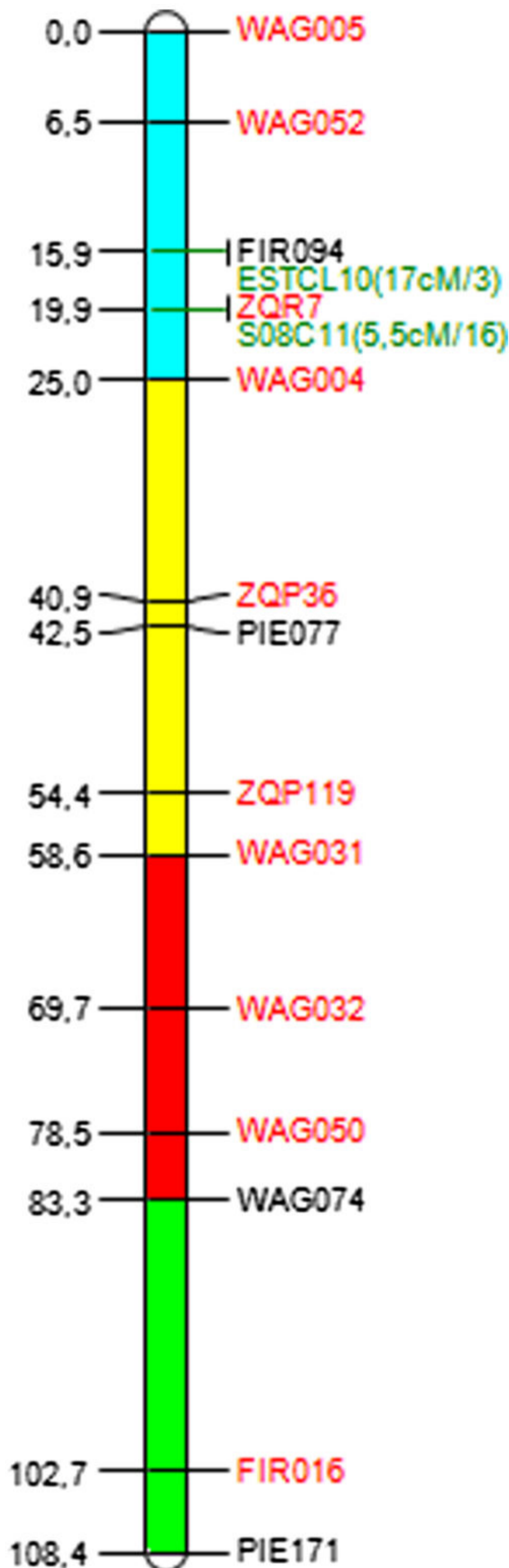


Figure 5

LG1 *Castanea*



LG2 *Quercus*



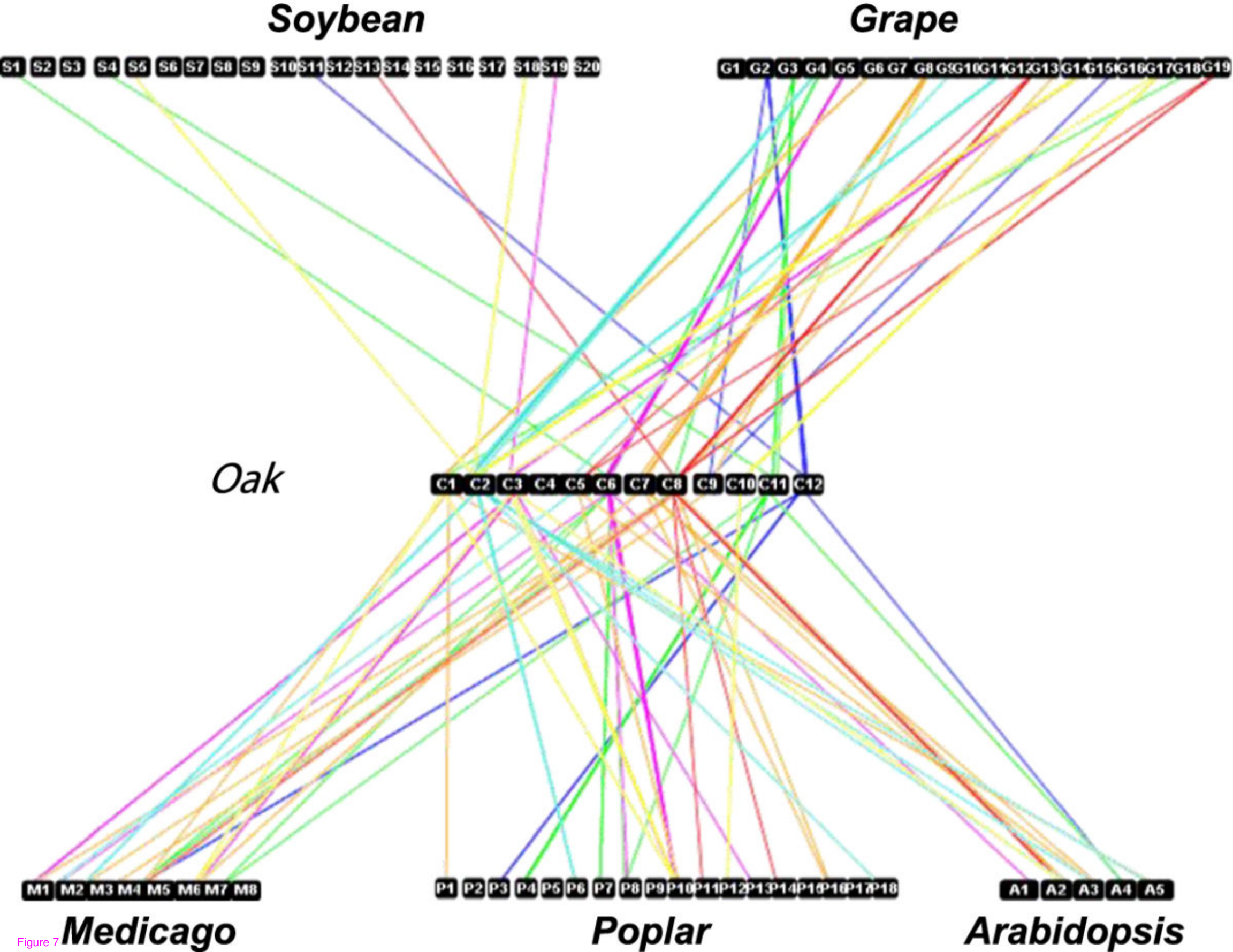


Figure 7

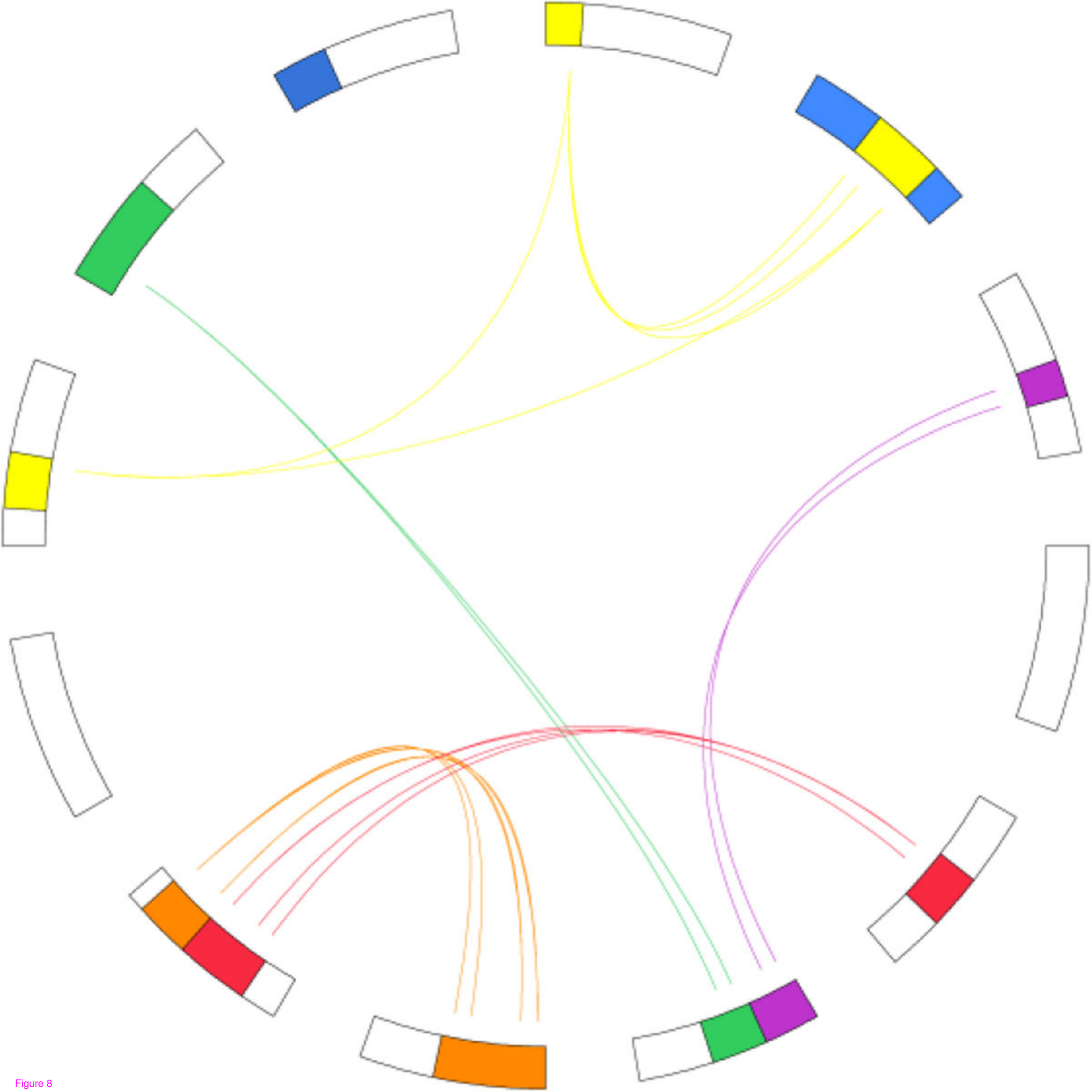


Figure 8

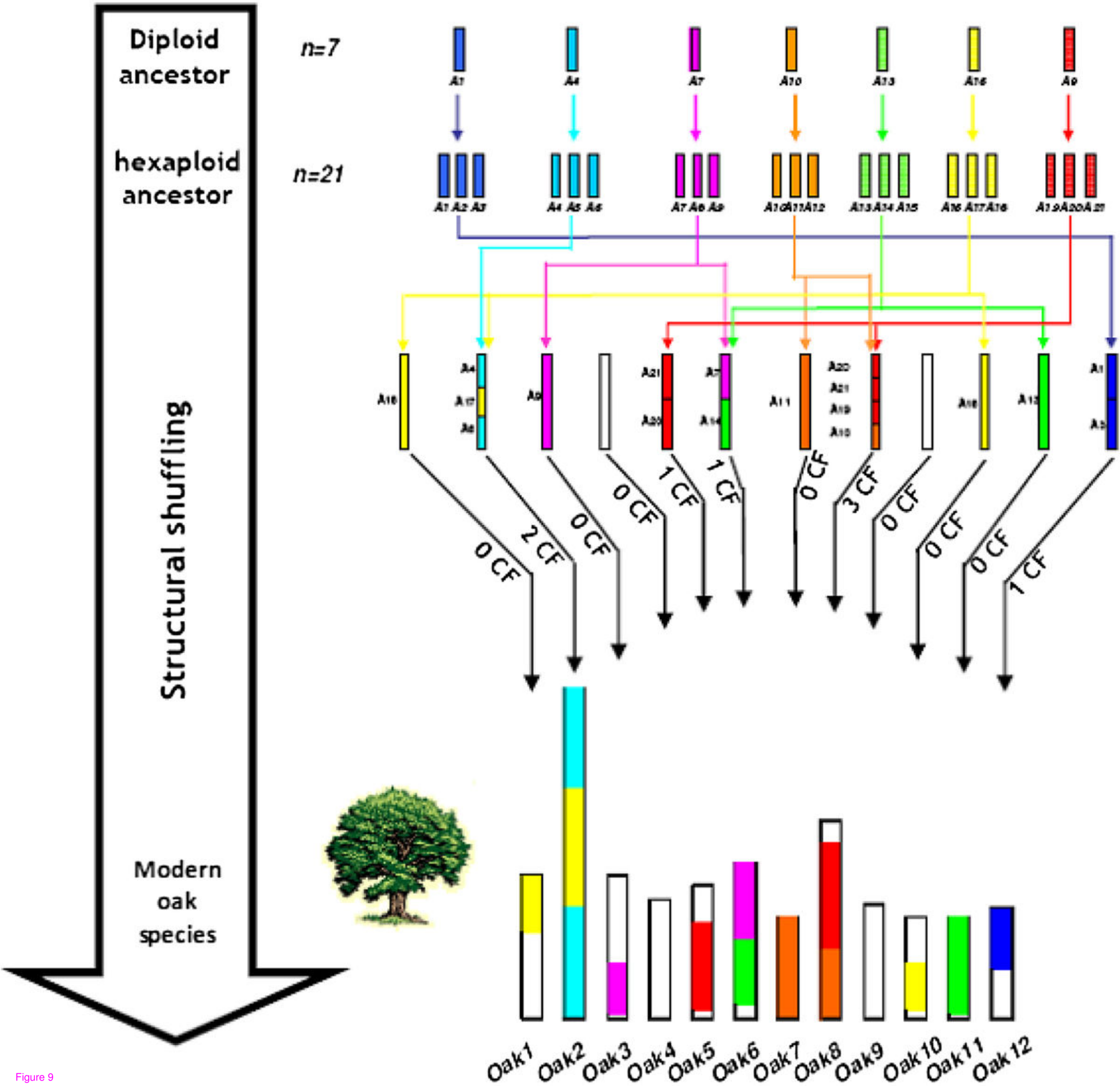


Figure 9

Additional files provided with this submission:

Additional file 1: 1456592967029357_add1.xlsx, 95K

<http://www.biomedcentral.com/imedia/8141334307961834/supp1.xlsx>

Additional file 2: 1456592967029357_add2.docx, 13K

<http://www.biomedcentral.com/imedia/3476050347961834/supp2.docx>

Additional file 3: 1456592967029357_add3.jpeg, 57K

<http://www.biomedcentral.com/imedia/2088139971796183/supp3.jpeg>

Additional file 4: 1456592967029357_add4.docx, 12K

<http://www.biomedcentral.com/imedia/1208943975796183/supp4.docx>

Additional file 5: 1456592967029357_add5.docx, 17K

<http://www.biomedcentral.com/imedia/1537026382796183/supp5.docx>

Additional file 6: 1456592967029357_add6.docx, 197K

<http://www.biomedcentral.com/imedia/5596794247961834/supp6.docx>

Additional file 7: 1456592967029357_add7.docx, 18K

<http://www.biomedcentral.com/imedia/2260496557961834/supp7.docx>

Additional file 8: 1456592967029357_add8.docx, 19K

<http://www.biomedcentral.com/imedia/3704564257961834/supp8.docx>

Additional file 9: 1456592967029357_add9.docx, 12K

<http://www.biomedcentral.com/imedia/7049855796183450/supp9.docx>

Additional file 10: 1456592967029357_add10.xlsx, 25K

<http://www.biomedcentral.com/imedia/4079705879618344/supp10.xlsx>

Additional file 11: 1456592967029357_add11.pdf, 262K

<http://www.biomedcentral.com/imedia/1666951127961834/supp11.pdf>

Additional file 12: 1456592967029357_add12.xlsx, 37K

<http://www.biomedcentral.com/imedia/1738870824796183/supp12.xlsx>

Additional file 13: 1456592967029357_add13.xlsx, 31K

<http://www.biomedcentral.com/imedia/5284040007961834/supp13.xlsx>