



HAL
open science

Tunneling Spectroscopy and Vortex Imaging in Boron-Doped Diamond

B. Sacépé, C. Chapelier, C. Marcenat, J. Kacmarcik, Thierry Klein, M.
Bernard, E. Bustarret

► **To cite this version:**

B. Sacépé, C. Chapelier, C. Marcenat, J. Kacmarcik, Thierry Klein, et al.. Tunneling Spectroscopy and Vortex Imaging in Boron-Doped Diamond. *Physical Review Letters*, 2006, 96, pp.097006. 10.1103/PhysRevLett.96.097006 . hal-00957724

HAL Id: hal-00957724

<https://hal.science/hal-00957724>

Submitted on 11 Mar 2014

HAL is a multi-disciplinary open access archive for the deposit and dissemination of scientific research documents, whether they are published or not. The documents may come from teaching and research institutions in France or abroad, or from public or private research centers.

L'archive ouverte pluridisciplinaire **HAL**, est destinée au dépôt et à la diffusion de documents scientifiques de niveau recherche, publiés ou non, émanant des établissements d'enseignement et de recherche français ou étrangers, des laboratoires publics ou privés.

Tunneling Spectroscopy and Vortex Imaging in Boron-Doped Diamond

B. Sacépé,^{1,*} C. Chapelier,¹ C. Marcenat,¹ J. Kačmarčík,^{1,2,3} T. Klein,² M. Bernard,² and E. Bustarret²

¹*DRFMC-SPSMS, CEA Grenoble, 17 rue des Martyrs, 38054 Grenoble Cedex 9, France*

²*Laboratoire d'Etude des Propriétés Electroniques des Solides, CNRS, B.P. 166, 38042 Cedex 9, France*

³*Centre of Low Temperature Physics IEP Slovakian Academy of Sciences & FS UPJŠ, Watsonova 47, 043 53 Košice, Slovakia*

(Received 14 October 2005; published 9 March 2006)

We present the first scanning tunneling spectroscopy study of single-crystalline boron-doped diamond. The measurements were performed below 100 mK with a low temperature scanning tunneling microscope. The tunneling density of states displays a clear superconducting gap. The temperature evolution of the order parameter follows the weak-coupling BCS law with $\Delta(0)/k_B T_c \simeq 1.74$. Vortex imaging at low magnetic field also reveals localized states inside the vortex core that are unexpected for such a dirty superconductor.

DOI: [10.1103/PhysRevLett.96.097006](https://doi.org/10.1103/PhysRevLett.96.097006)

PACS numbers: 74.50.+r, 74.25.Qt, 74.78.Db

The recent discovery of a superconducting transition in boron-doped diamond provides a new interesting system for the study of superconductivity in doped semiconductors [1]. In the broad band gap of diamond (~ 5.5 eV), boron impurities introduce an acceptor level with a hole binding energy of ~ 0.37 eV and lead to a metallic state above a critical boron concentration in the range of a few atoms per thousand. According to the doping level, the superconducting transition is observed with a critical temperature varying between 1 and 10 K [2,3].

Because of the strong bonding states and the hole doping, various theoretical studies have stressed the similarity between diamond and the superconductor MgB_2 [4–6]. The origin of the remarkable superconductivity in MgB_2 at $T_c = 39$ K is now well understood to be a result of phonons coupled to holes in the two-dimensional σ -bonding valence bands. Although the band structure of diamond is three dimensional, the superconductivity in boron-doped diamond could also be due to the coupling of a few holes at the top of the valence band to the optical bond-stretching zone-center phonons [4,5] as well as to boron-related modes [6,7]. Numerical calculations of the electron-phonon coupling by the density-functional supercell method are claimed to yield a calculated T_c in good agreement with experiments for at least one boron concentration [7], thus supporting that boron-doped diamond is a phonon mediated superconductor.

Another theoretical approach proposed by Baskaran [8] considers diamond, a broad band insulator, to be an appropriate vacuum state for the boron subsystem; electron correlations then drive an Anderson-Mott insulator to resonating valence band superconductor transition [9]. Because of the proximity to the boron critical density of the insulator-metal transition, the superconductivity takes place within the impurity band. In the disordered lattice of boron acceptors, such a strongly correlated impurity band is expected to give rise to an extended s -wave superconducting state.

In this Letter we report on low temperature tunneling spectroscopy and vortex images of superconducting hole-

doped diamond films. These measurements, which probe the quasiparticle excitations near the Fermi energy, show a clear BCS local density of states (LDOS) consistent with weak coupling. Contrary to what is expected for a dirty superconductor [10,11], a significant density of localized resonant states is found below the gap in the vortex core.

The sample studied was a selected boron-doped single-crystalline diamond epilayer synthesized at 820 °C by microwave plasma-assisted decomposition (MPCVD) of a gas mixture composed of hydrogen, methane, and diborane with a controlled boron to carbon concentration ratio. A 001-oriented type Ib diamond substrate was exposed to a pure hydrogen plasma prior to diborane-free growth of a 500 nm-thick buffer layer. Optical and transport measurements showed that these steps were critical for achieving a high quality boron-doped diamond epilayer. A boron atomic density varying between $n_B = 3.1 \times 10^{21} \text{ cm}^{-3}$ at the surface and $n_B = 2.1 \times 10^{21} \text{ cm}^{-3}$ at the interface, as well as an epilayer thickness of 75 nm, were derived from a quantitative comparison to a secondary ion mass spectroscopy (SIMS) profile measured in a B -implanted diamond crystal with a known peak boron concentration. Because the density and effective masses of the charge carriers are not clearly established [12], transport characteristics such as the Fermi velocity v_F and mean free path l , can only be roughly estimated. For a carrier density deduced from the boron density and a sheet resistance of $83 \Omega/\square$ at 4.2 K, l is estimated within the free-electron model to be less than 1.3 nm. The surface topography obtained with the scanning tunneling microscope (STM) is displayed in Fig. 1. The parallel 600 nm wide stripes reflect the vicinal surface structure of the substrate and can be observed everywhere with the same orientation. The rms micro-roughness is 1.8 nm and the in plane characteristic size of the surface corrugation is about 75 ± 25 nm.

Spectroscopic measurements were performed with a home-built scanning tunneling microscope (STM) cooled down to a base temperature of 50 mK in a dilution refrigerator. The sample was scanned with a Pt-Ir cut tip. In order to probe the LDOS, a small ac modulation of 10 μV rms

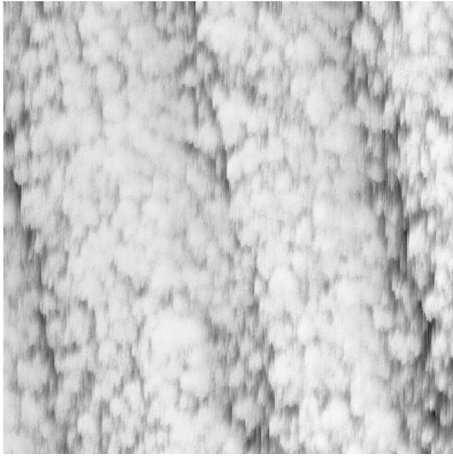


FIG. 1. Topography image ($1.5 \times 1.5 \mu\text{m}^2$) of the sample obtained at 70 mK. The rms rugosity is 1.8 nm.

was added to the sample-tip dc bias voltage V and the differential conductance $G(V) = \frac{dI}{dV}(V)$ obtained with a lock-in amplifier. At any position above the sample, V could be ramped and the resulting $G(V)$ curve giving the LDOS around the Fermi energy measured. In addition, a static magnetic field perpendicular to the sample surface could be applied with a superconducting coil surrounding the STM.

Tunneling spectroscopy performed at different locations revealed the surface to be superconducting with very little spatial inhomogeneity. In Fig. 2 we show two representative differential conductance curves performed at 70 mK with a tunnel resistance of 20 M Ω . Most of the experimental spectra can be well reproduced by a theoretical BCS density of states as can be seen in Fig. 2(a). The fit gives a superconducting order parameter $\Delta = (285 \pm 2) \mu\text{eV}$. A thermal broadening with an effective temperature $T_{\text{eff}} = 235$ mK in the LDOS calculation indicates that the energy resolution of our STM is probably limited by unfiltered electromagnetic radiation which heats the electron bath. No additional parameters to describe pair breaking were needed. Although the spectrum was almost identical everywhere on the scanned surface, we also obtained smaller values of Δ in several independent experiments on this sample [for example, see Fig. 2(b)]. This slight dispersion of the gap value can be either the result of spatial macroscopic inhomogeneity of the doping or be the consequence of variation in the chemical cleaning of the surface prior to each run. The temperature dependence of the order parameter $\Delta(T)$ displayed in Fig. 2 is well described by the BCS theory with a critical temperature of 1.85 K very close to the superconducting transition temperature of 1.9 K obtained by ac susceptibility and transport measurements. This clearly demonstrates that boron-doped diamond is well described by s -wave BCS superconductivity with a measured ratio $\frac{\Delta}{k_B T_c} \approx 1.74$ characteristic of weak coupling [13], as expected from theoretical calculations [4–7]. Nevertheless, we also found a

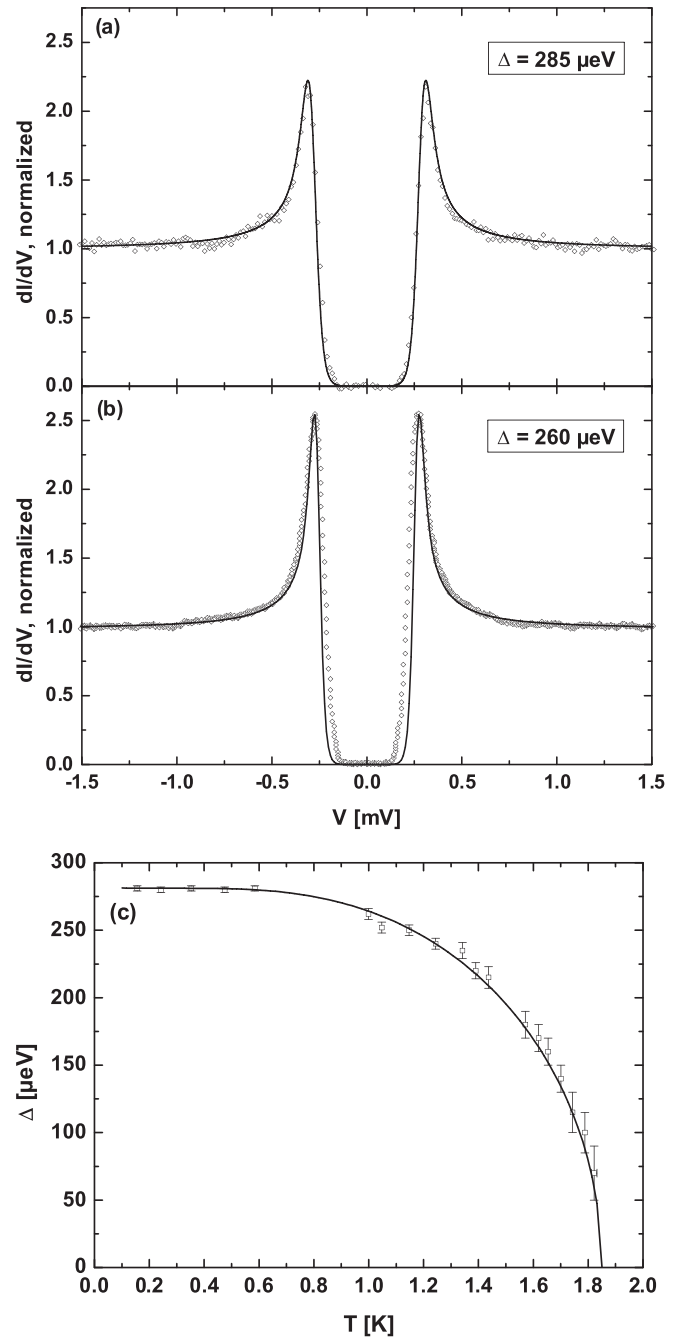


FIG. 2. Top: experimental normalized tunneling conductance measured at 70 mK (open circle). Solid lines correspond to BCS fits with: (a) $\Delta = 285 \mu\text{eV}$ and $T_{\text{eff}} = 235$ mK; (b) $\Delta = 260 \mu\text{eV}$ and $T_{\text{eff}} = 175$ mK. Bottom: (c) temperature dependence of the BCS gap (open squares) compared with a BCS law with $T_c = 1.85$ K (solid line).

small number of spectra as shown in Fig. 2(b) which present broader gap edges. In order to explain them, further investigations of the LDOS for different crystallographic orientations are needed to investigate a possible anisotropy of the order parameter.

In a magnetic field, for a type II superconductor a mixed state forms where magnetic vortices each carrying one flux

quantum ϕ_0 penetrate the sample. In the absence of pinning and for an isotropic order parameter, the repulsive interaction between flux lines gives rise to a periodic lattice of vortices with a triangular symmetry: the Abrikosov vortex lattice [14]. A vortex represents a singularity with the superconducting order parameter suppressed at its center. In the clean limit, i.e., $\xi_0/l \ll 1$ ($\xi_0 = \frac{\hbar v_F}{\pi \Delta(0)}$ is the BCS coherence length) confinement of quasiparticles inside the vortex yields discretized energy levels separated in energy by Δ^2/E_F [15]. Such bound states were first observed in NbSe₂ as a zero bias conductance (ZBC) peak [16]. STM studies of vortices in high temperature superconductors have revealed no ZBC peak but additional quasiparticles states at constant energies above and below the Fermi level [17,18]. In the less theoretically studied dirty limit case, i.e., $\xi_0/l \gg 1$, a mixing of the core bound states by disorder results in a flat normal-metal-like LDOS predicted [10] and experimentally observed in Nb_{1-x}Ta_xSe₂ at 1.3 K [11]. The temperature independent vortex size is then equal to the dirty coherence length $\xi_s = (\hbar D/2\pi k_B T_c)^{1/2}$, where D is the diffusion coefficient. For our sample, upper critical field measurements yield a Ginzburg-Landau coherence length $\xi_{GL} = 15$ nm from the expression $H_{c2} = \phi_0/(2\pi\xi_{GL}^2)$ [2]. With a mean free path $l \sim 1.3$ nm and a BCS coherence length $\xi_0 \sim 240$ nm evaluated from the relation $\xi_{GL} = 0.855\sqrt{\xi_0 l}$, boron-doped diamond is clearly in the dirty limit with $\xi_s = (2/\pi)\xi_{GL} \approx 9.5$ nm.

We have imaged the vortex arrangement by combining topography and spectroscopy measurements in a magnetic field applied perpendicular to the diamond film. The sample-tip dc bias was set to a voltage V close to the BCS superconducting coherence peak ($eV = \Delta$). Then, the presence of vortex is revealed by a decrease of $\frac{dI}{dV}$ which gave a dark spot in the differential conductance image. In Figs. 3(a) and 3(b) we show two $1.5 \times 1.5 \mu\text{m}^2$ vortex images obtained at about 100 mK and induced by a field H of 1200 Oe and 1900 Oe, respectively. The vortex positions were very stable and insensitive to the scanning. In order to reduce the noise, these images were convoluted with a disc of diameter characteristic of the length scale over which the contrast changes occur in the raw image. Its radius R is not a direct measurement of the coherence length ξ_s , because the decrease of the coherence peak begins well before crossing the vortex core [10]. Indeed, we measured $R = 40 \pm 5$ nm and $R = 30 \pm 5$ nm for a magnetic field of 1200 and 1900 Oe, respectively. This dependency can be explained by a field enhanced vortex-vortex interaction [10].

Contrary to the perfect Abrikosov vortex lattice, the spatial distribution of vortices is strongly disordered even though a local hexagonal arrangement persists. In order to characterize it, the autocorrelation function defined by $G(\delta x, \delta y) = \int I(x + \delta x, y + \delta y)I(x, y)dx dy$ was calculated. Here, $I(x, y)$ is the local degree of brightness. $G(\delta)$ gives the probability of finding a similar brightness in the

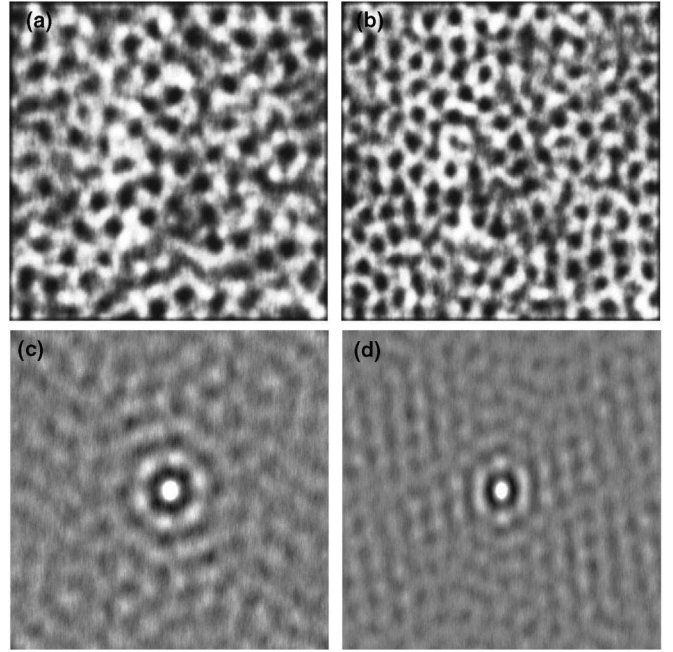


FIG. 3. Top: vortex images ($1.5 \times 1.5 \mu\text{m}^2$) at two different magnetic fields: (a) 1200 Oe, (b) 1900 Oe. Bottom: two-dimensional autocorrelation function calculated from the above vortex images.

image for a spatial shift equals to $\delta = (\delta x, \delta y)$ from any point. The results are shown on Figs. 3(c) and 3(d) for the vortex images Figs. 3(a) and 3(b), respectively. Although the lattice appears strongly disordered, the sixfold symmetry of first rings of neighbors in the autocorrelation pictures indicates a persistent orientational order for any site of the lattice. The mean distance between vortices is equal to 110 ± 5 nm and 140 ± 1 nm, in good agreement with $d_\Delta = (\frac{2}{\sqrt{3}} \frac{\phi_0}{H})^{1/2}$ expected for a triangular lattice. Moreover, for the higher field we can see a rotation and a slight deformation of the ring of first neighbors accompanied by the onset of a diffuse striation in a direction which tends to align with the vicinal stripes of the surface visible on Fig. 1. This alignment is consistent with a stronger pinning by these stripes at higher flux density.

In order to map the LDOS inside a vortex we acquired spectra every 0.7 nm along lines equally spaced by 2.2 nm. The exact localization of the core is a delicate problem in a dirty superconductor since disorder is expected to smear out the ZBC peak by scattering the localized quasiparticle states and consequently yield a flat normal-metal-like LDOS [10,11]. Here, instead, we surprisingly obtained numerous localized resonances at nonzero energies inside the gap while crossing a vortex along different lines. We consider a vortex core to be defined as the region containing the highest concentration of resonance peaks within our spatial resolution. The corresponding line of spectra is displayed in Fig. 4 (top). Such a determination gives a vortex core radius of about 10 nm consistent with ξ_s . More striking is the periodiclike spatial occurrence of these

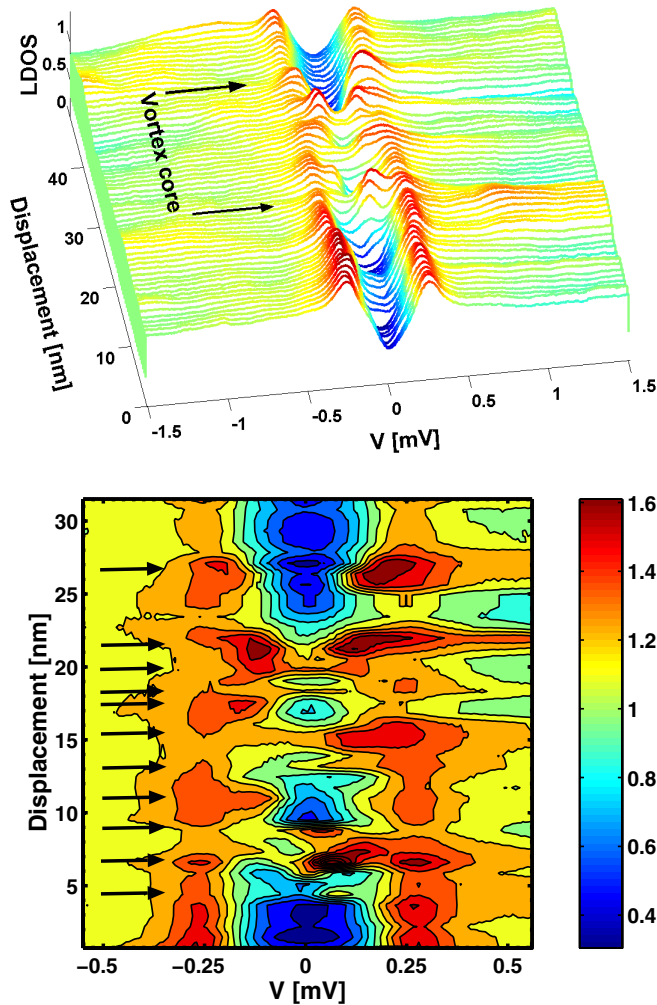


FIG. 4 (color online). Tunneling spectroscopy at $T = 53$ mK through a vortex core induced by a magnetic field of 1800 Oe. Top: tunneling spectra acquired every 0.7 nm along a line crossing the vortex core which extends between the two arrows. A sliding averaging of two consecutive spectra was applied in order to attenuate high peaks for clarity. Bottom: two-dimensional view of the same data restricted to the vortex core and without averaging. The color scale as well as the contour lines give the normalized LDOS. Black arrows indicate the positions of the localized resonances.

resonances as pointed by the black arrows in the two-dimensional view of Fig. 4. It is worth noticing that a periodic pattern of quasiparticle states has also been observed around vortex cores in $\text{Bi}_2\text{Sr}_2\text{CaCu}_2\text{O}_{8+\delta}$, another superconductor close to a Mott transition [19]. The distance of about 2.2 nm between each localized resonance is almost constant and present on most scanned line. Such a spatial modulation appears in the theoretical clean limit [20] at low temperature $T/T_c \ll 1$ as Friedel-like oscillations with a period of the order of the Fermi wavelength. Although the distance between each localized resonance is consistent with an estimation of $\lambda_F \approx 1.6$ nm in a free-electron model, our sample is not in the clean limit.

Moreover, because of thermal smearing, quantum states at an energy of Δ^2/E_F would appear as a ZBC peak. On the other hand, these puzzling resonances could be associated to low-lying vortex bound states shifted away from the Fermi level by the impurity potential [21,22]. Then, the spatial position and the energy of these resonances would be specific to the local configuration of disorder.

In conclusion, we performed the first spectroscopic tunneling study and STM images of the vortex lattice in superconducting boron-doped diamond. Our results provide a local density of states in excellent agreement with the BCS s -wave theory with a ratio $\Delta/k_B T_c \approx 1.74$ characteristic of a weak-coupling superconductor. Under magnetic field, vortices which are arranged in a strongly disordered triangular lattice present unexpected resonances inside the BCS gap at nonzero energies. Further investigations are needed in order to understand whether these magnetic field-induced resonances are a generic feature of any superconducting state neighboring a Anderson-Mott insulator.

The authors are indebted to C. Cytermann (Technion Haifa) for measuring the SIMS profile.

*Electronic address: benjamin.sacepe@cea.fr

- [1] E. A. Ekimov *et al.*, Nature (London) **428**, 542 (2004).
- [2] E. Bustarret *et al.*, Phys. Rev. Lett. **93**, 237005 (2004).
- [3] H. Umezawa *et al.*, cond-mat/0503303.
- [4] L. Boeri, J. Kortus, and O. K. Andersen, Phys. Rev. Lett. **93**, 237002 (2004).
- [5] K. W. Lee, and W. E. Pickett, Phys. Rev. Lett. **93**, 237003 (2004).
- [6] X. Blase, Ch. Adessi, and D. Connétable, Phys. Rev. Lett. **93**, 237004 (2004).
- [7] H. J. Xiang *et al.*, Phys. Rev. B **70**, 212504 (2004).
- [8] G. Baskaran, cond-mat/0404286; cond-mat/0410296.
- [9] G. Baskaran, Phys. Rev. Lett. **90**, 197007 (2003).
- [10] A. A. Golubov and U. Hartmann, Phys. Rev. Lett. **72**, 3602 (1994).
- [11] Ch. Renner *et al.*, Phys. Rev. Lett. **67**, 1650 (1991).
- [12] E. Bustarret, E. Gheeraert, and K. Watanabe, Phys. Status Solidi A **199**, 9 (2003).
- [13] B. Mitrović, H. G. Zarate, and J. P. Carbotte, Phys. Rev. B **29**, 184 (1984).
- [14] A. A. Abrikosov, Sov. Phys. JETP **5**, 1174 (1957).
- [15] C. Caroli, P. G. de Gennes, and J. Matricon, Phys. Lett. **9**, 307 (1964).
- [16] H. F. Hess *et al.*, Phys. Rev. Lett. **62**, 214 (1989).
- [17] I. Maggio-Aprile *et al.*, Phys. Rev. Lett. **75**, 2754 (1995).
- [18] S. H. Pan *et al.*, Phys. Rev. Lett. **85**, 1536 (2000).
- [19] J. E. Hoffman *et al.*, Science **295**, 466 (2002).
- [20] N. Hayashi *et al.*, Phys. Rev. Lett. **80**, 2921 (1998).
- [21] Q. Han, L. Y. Zhang, and Z. D. Wang, Phys. Rev. B **62**, 5936 (2000).
- [22] E. Brézin, S. Hikami, and A. I. Larkin, Phys. Rev. B **60**, 3589 (1999).