



**HAL**  
open science

## Boundary Element and Finite Element Coupling for Aeroacoustics Simulations

Nolwenn Balin, Fabien Casenave, François Dubois, Eric Duceau, Stefan  
Duprey, Isabelle Terrasse

► **To cite this version:**

Nolwenn Balin, Fabien Casenave, François Dubois, Eric Duceau, Stefan Duprey, et al.. Boundary Element and Finite Element Coupling for Aeroacoustics Simulations. 2014. hal-00944696v1

**HAL Id: hal-00944696**

**<https://hal.science/hal-00944696v1>**

Submitted on 11 Feb 2014 (v1), last revised 29 Oct 2014 (v2)

**HAL** is a multi-disciplinary open access archive for the deposit and dissemination of scientific research documents, whether they are published or not. The documents may come from teaching and research institutions in France or abroad, or from public or private research centers.

L'archive ouverte pluridisciplinaire **HAL**, est destinée au dépôt et à la diffusion de documents scientifiques de niveau recherche, publiés ou non, émanant des établissements d'enseignement et de recherche français ou étrangers, des laboratoires publics ou privés.

# Boundary Element and Finite Element Coupling for Aeroacoustics Simulations

Nolwenn Balin<sup>1</sup>, Fabien Casenave<sup>1,2</sup>, François Dubois<sup>3</sup>,  
Eric Duceau<sup>1</sup>, Stefan Duprey<sup>1,4</sup>, Isabelle Terrasse<sup>1</sup>

<sup>1</sup> Airbus Group Innovations, 12 Rue Pasteur, 92150 Suresnes, France

<sup>2</sup> Université Paris-Est, CERMICS (ENPC), 6-8 Avenue Blaise Pascal, Cité Descartes,  
F-77455 Marne-la-Vallée, France

<sup>3</sup> CNAM, Laboratoire LMSSC, 292 rue Saint-Martin, 75141 Paris Cedex 03, France

<sup>4</sup> Institut Elie Cartan, Université Henri Poincaré, 24-30 rue Lionnois, 54003 Nancy Cedex, France

February 11, 2014

## Abstract

We consider the scattering of acoustic perturbations in a presence of a flow. We suppose that the space can be split into a zone where the flow is uniform and a zone where the flow is potential. In the first zone, we apply a Prandtl–Glauert transformation to recover the Helmholtz equation. The well-known setting of boundary element method for the Helmholtz equation is available. In the second zone, the flow quantities are space dependent, we have to consider a local resolution, namely the finite element method. Herein, we carry out the coupling of these two methods and present various applications and validation test cases. The source term is given through the decomposition of an incident acoustic field on a section of the computational domain’s boundary.

## 1 Introduction

Acoustics is a well known science and the basics mechanical and thermodynamical notions are well understood since the 19th century as shown *e.g.* with the classical books of Lord Rayleigh [32]. For a modern presentation of various aspects of this science, we refer to Morse and Ingard [29] and to the contribution of Bruneau *et al.* [12]. Acoustics can be presented with temporal or harmonic dynamics. In the first case, acoustics can be viewed as an hyperbolic problem and in the second, the Helmholtz equation plays a central role.

With direct numerical time integration, finite differences are naturally popular. Even if it has not been created for acoustics applications, the MAC method with staggered grids of Harlow and Welch [24] can be used very easily in acoustics. We refer also to the pioneering work of Virieux for geophysics applications [39]. A finite difference method uses a finite grid in a domain of finite size. How to express that waves can go outside the computational domain without reflection ? One possible solution is to derive appropriate absorbing boundary conditions (see *e.g.* the book of Taflove summarized [38]). An other possibility is to add a layer of absorbing material. Efficient absorbing layers have been first proposed for the vectorial wave equation (Maxwell in electromagnetism) by Bérenger [8], then applied in acoustics (scalar equation) by Abarbanel *et al.* [1]. It was adapted by our group for advective acoustics and staggered grids [20]. However, the adaptation of cartesian finite differences to complex industrial geometries is a very difficult task and other numerical methods have been developed in order to guarantee this flexibility. The finite element method is the most popular in this direction. We refer to the fundamental book of Zienkiewicz [42] essentially for structural mechanics applications and to Craggs [18] for the acoustics applications. A rigorous mathematical analysis of the method with Hilbertian mathematical methods is proposed in the book of Ciarlet [16]. The main advantages of these so-called volume methods is the possibility to deal with space dependent media of propagation.

When the medium of propagation is uniform, the opportunity to represent the field as an integral representation over a surface of some data on the boundary of the radiating object makes natural so-called integral methods. The unknown is a field simply located on a finite surface and the three-dimensional field couples all the degrees of freedom on the surface. The difficulty is to take into account the fact that waves are radiating from finite distance towards infinity. The radiation Sommerfeld condition solves this problem and expresses that no wave is coming from infinity [36]. The adaptation of these ideas to integral methods for exterior boundary-value problems for Helmholtz equation have been discussed among others by Schenck [35] and Burton and Miller [13]. For a rigorous mathematical analysis, we refer to Nédélec [30]. The main advantages of these so-called integral methods is the possibility to deal with large geometries. In particular, in the case of the scattering by two objects, the size of the numerical problem does not depend on the distance between the objects. Besides, we have access to the scattered field at any point of the space.

A natural idea to profit from the advantages of volume and integral methods is the coupling between boundary and finite element methods. The fundamental mathematical work is due to Zienkiewicz, Kelly, and Bettess [42], Johnson and Nédélec [25], and Costabel [17]. The thesis of Levillain [27] gives the first numerical applications for Maxwell equations. We refer to Bielak and Mac Camy [9] for fluid - solid coupling. For other modern developments, we refer to the work of Abboud *et al.* (see *e.g.* [2]).

The model coupled problem is presented in Section 2. This problem is transformed by the Prandtl-Glauert transformation, in order to recover the classical Helmholtz equation in the area where the flow is uniform in Section 3, leading to a transformed coupled weak formulation. The finite dimensional linear system is presented in Section 4, and numerical studies are carried out in Section 5.

## 2 Definition of the model problem

### 2.1 Context and geometry

The objective of the current work is the computation of the acoustic field generated by a turboreactor engine in flight condition, especially in take-off and landing phases. We will consider the model problem presented in Figure 1, where the other parts of the aircraft (engine pylon, wings, fulesage) are not modeled.

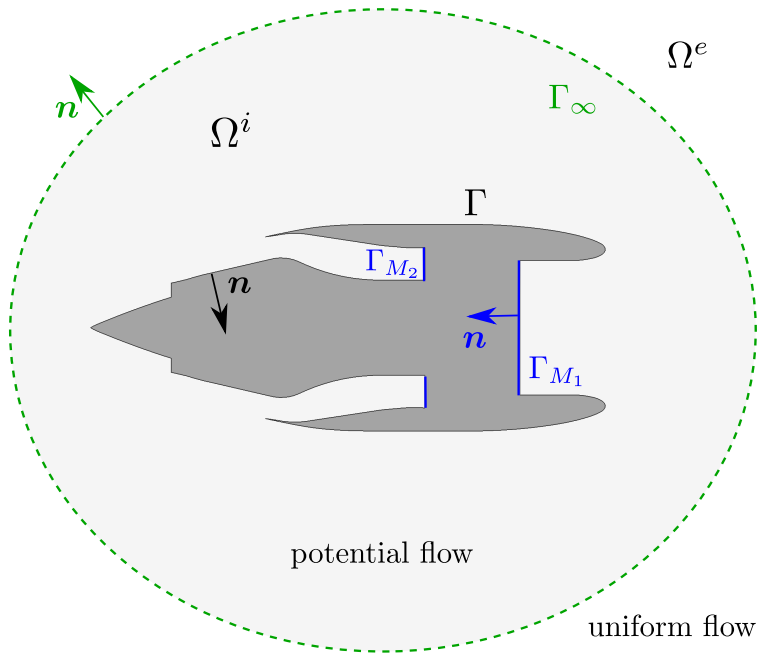


Figure 1: Model problem

The considered acoustic sources are the inward and outward fans noise. The fan noise frequency spectrum is characterized by some harmonic peaks at frequencies that are multiple of the rotational

frequency of the blades. For simplicity, we consider a single pulsation  $\omega_0$ . Moreover, the fans are located inside a duct that is relatively deep compared to its width. For these reasons, it is classical to model the duct by semi-infinite cylinders, and represent the acoustic sources on modal bases functions defined at the bases of these cylinders, called modal surfaces. As illustrated on Figure 1, two modal surfaces  $\Gamma_{M_1}$  and  $\Gamma_{M_2}$  are defined. The other part of the engine boundary is rigid and noted  $\Gamma$ .

The complexity of the flow depends on the distance from the engine. For low Mach values, the flow can be decomposed into three areas with different flow conditions: a uniform flow far from the engine, a turbulent flow (often non-linear) due to the fans and the boundary layers, and a potential flow in-between. We use this decomposition in our model, except for the turbulent area: the impact of the boundary layers will be neglected and the interior part of the engine is supposed to be behind the modal surfaces. We then consider only two domains:  $\Omega^i$  with a potential flow and  $\Omega^e$  with a uniform flow. The flow is an input to the problem. Matching conditions on the flow are supposed at the interface  $\Gamma_\infty$  between these two domains. Moreover, at  $\Gamma_{M_1}$  and  $\Gamma_{M_2}$ , the flow is supposed uniform and orthogonal to the surface. It is also tangent to  $\Gamma$ .

## 2.2 Coupled problem

We note  $c_0$  the celerity,  $\rho_0$  the density,  $\mathbf{M}_0$  the Mach vector of the fluid. These quantities depend on the position in  $\Omega^i$ :

$$\begin{aligned} \forall \mathbf{x} \in \Omega^e \cup \Gamma_\infty : & \quad c_0(\mathbf{x}) = c_\infty, & \quad \rho_0(\mathbf{x}) = \rho_\infty, & \quad \mathbf{M}_0(\mathbf{x}) = \mathbf{M}_\infty, \\ \forall \mathbf{x} \in \Gamma_M : & \quad c_0(\mathbf{x}) = c_M, & \quad \rho_0(\mathbf{x}) = \rho_M, & \quad \mathbf{M}_0(\mathbf{x}) = \mathbf{M}_M. \end{aligned}$$

We note  $\mathbf{v}$  and  $p$  the acoustic velocity and pressure.

In the interior domain  $\Omega^i$ , the convective flow is supposed to be subsonic, stationary, non viscous, isentropic, and irrotational. Moreover, the acoustic effects are considered to be a first order perturbation of this flow. With these assumptions, the acoustic velocity  $\mathbf{v}$  is potential. Hence, there exists an acoustic potential,  $\varphi$ , such that  $\mathbf{v} = \nabla\varphi$ . We note by  $\varphi^e$  and  $\varphi^i$  the acoustic potential respectively restricted to  $\Omega^e$  and  $\Omega^i$ .

The physical quantities are associated with complex quantities with the following convention on, for instance, the acoustic potential:  $\varphi \leftrightarrow \Re(\varphi \exp(-i\omega_0 t))$ . The same notation is taken for the physical quantity and its complex counterpart. In what follows, we always refer to the complex quantities. The wavenumber depends on the position in  $\Omega^i$ :

$$k_0(\mathbf{x}) = k_\infty \quad \forall \mathbf{x} \in \Omega^e \cup \Gamma_\infty, \quad k_0(\mathbf{x}) = k_M \quad \forall \mathbf{x} \in \Gamma_M.$$

For simplicity, only one modal surface  $\Gamma_M$  is considered in the model problem instead of  $\Gamma_{M_1}$  and  $\Gamma_{M_2}$  as presented on Figure 1. Our starting point is to derive an equation in  $\Omega^i$ , with convenient boundary conditions on  $\partial\Omega^i = \Gamma \cup \Gamma_\infty \cup \Gamma_M$ . Following [34, p.259 eq.F27], and making use of the irrotationality of the carrier flow, the linearization of the Euler equations leads to

$$\rho_0 (k_0^2 \varphi^i + ik_0 \mathbf{M}_0 \cdot \nabla \varphi^i) + \text{div} [\rho_0 (\nabla \varphi^i - (\mathbf{M}_0 \cdot \nabla \varphi^i) \mathbf{M}_0 + ik_0 \varphi^i \mathbf{M}_0)] = 0 \quad \text{in } \Omega^i. \quad (1)$$

This is the convected Helmholtz equation. We assume that  $\Gamma$  reflects perfectly the acoustic perturbations, yielding

$$\nabla \varphi^i \cdot \mathbf{n} \quad \text{on } \Gamma. \quad (2)$$

We still need boundary conditions on  $\Gamma_\infty$  and  $\Gamma_M$ . To do so, transmission conditions are written across  $\Gamma_\infty$ :  $[\varphi]_{\Gamma_\infty} = 0$  and  $[(\nabla \varphi - (\mathbf{M}_\infty \cdot \nabla \varphi) \mathbf{M}_\infty + ik_\infty \varphi \mathbf{M}_\infty) \cdot \mathbf{n}]_{\Gamma_\infty} = 0$ , where  $[\cdot]_X$  denotes the jump of a quantity across a surface  $X$ . Likewise, the following transmission condition hold on  $\Gamma_M$ :  $[\varphi]_{\Gamma_M} = 0$  and  $[(\nabla \varphi - (\mathbf{M}_M \cdot \nabla \varphi) \mathbf{M}_M + ik_M \varphi \mathbf{M}_M) \cdot \mathbf{n}]_{\Gamma_M} = 0$ . Then, other problems on the acoustic potential are written beyond  $\Gamma_\infty$  and  $\Gamma_M$ , so that, to the point of view of problem (1), the behaviour of the potential at these boundaries is well-defined. We now describe these problems.

The first one is in  $\Omega^e$ , which solution is a quantity of interest since the acoustic pressure in the exterior domain is searched as well. The second one is in  $\Omega_M$ , a semi-infinite waveguide with base  $\Gamma_M$

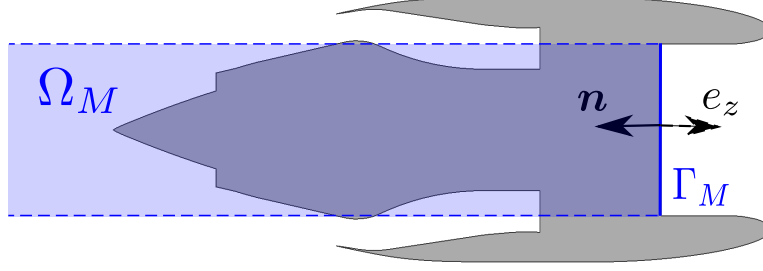


Figure 2: Model of the engine : a semi-infinite waveguide.

and oriented along the axis of the engine, see Figure 2. This enables us to define the source terms of the problem, as well as the behaviour of the potential at  $\Gamma_M$ .

In  $\Omega^e$ , the acoustic potential verifies the convected Helmholtz equation as well. The uniformity of the convective flow in  $\Omega^e$  yields

$$\Delta\varphi^e + k_\infty^2\varphi^e + 2ik_\infty\mathbf{M}_\infty \cdot \nabla\varphi^e - \mathbf{M}_\infty \cdot \nabla(\mathbf{M}_\infty \cdot \nabla\varphi^e) = 0 \quad \text{in } \Omega^e. \quad (3)$$

In addition, a Sommerfeld-like radiation condition is enforced to ensure uniqueness of the problem by selecting outgoing scattered waves. Then, suppose that a Dirichlet boundary condition is enforced:  $\varphi^e = F$  on  $\Gamma_\infty$ , so that the exterior problem is well-posed. The operator that maps  $F$  onto  $(\nabla\varphi^e - (\mathbf{M}_\infty \cdot \nabla\varphi^e)\mathbf{M}_\infty + ik_\infty\varphi^e\mathbf{M}_\infty)|_{\Gamma_\infty} \cdot \mathbf{n}$ , where  $\varphi^e$  is the solution of the above exterior problem, is called the Dirichlet-to-Neumann operator associated with the exterior problem, and is denoted by  $\Lambda_\infty$ . Hence, using the transmission conditions on  $\Gamma_\infty$ , the boundary condition at  $\Gamma_\infty$  of the interior problem is  $(\nabla\varphi^i - (\mathbf{M}_\infty \cdot \nabla\varphi^i)\mathbf{M}_\infty + ik_\infty\varphi^i\mathbf{M}_\infty)|_{\Gamma_\infty} \cdot \mathbf{n} = \Lambda_\infty(\varphi^i|_{\Gamma_\infty})$ .

The same reasoning is carried out in  $\Omega_M$ . The acoustic problem in  $\Omega_M$  with a Dirichlet boundary condition on  $\Gamma_M$  is well-posed, so that a Dirichlet-to-Neumann operator associated with the problem in  $\Omega_M$  can be defined, and is denoted by  $\Lambda_M$ . Hence, using the transmission conditions on  $\Gamma_M$ , the boundary condition at  $\Gamma_M$  of the interior problem is  $(\nabla\varphi^i - (\mathbf{M}_M \cdot \nabla\varphi^i)\mathbf{M}_M + ik_M\varphi^i\mathbf{M}_M) \cdot \mathbf{n}|_{\Gamma_M} = \Lambda_M(\varphi^i|_{\Gamma_M})$ .

Finally, the complete coupled problem is written

$$\left\{ \begin{array}{ll} \rho_0 (k_0^2\varphi^i + ik_0\mathbf{M}_0 \cdot \nabla\varphi^i) \\ \quad + \text{div} [\rho_0 (\nabla\varphi^i - (\mathbf{M}_0 \cdot \nabla\varphi^i)\mathbf{M}_0 + ik_0\varphi^i\mathbf{M}_0)] = 0, & \text{in } \Omega^i, \\ \quad \nabla\varphi^i \cdot \mathbf{n} = 0, & \text{on } \Gamma, \\ \quad (\nabla\varphi^i - (\mathbf{M}_\infty \cdot \nabla\varphi^i)\mathbf{M}_\infty + ik_\infty\varphi^i\mathbf{M}_\infty) \cdot \mathbf{n} = \Lambda_\infty(\varphi^i), & \text{on } \Gamma_\infty, \\ \quad (\nabla\varphi^i - (\mathbf{M}_M \cdot \nabla\varphi^i)\mathbf{M}_M + ik_M\varphi^i\mathbf{M}_M) \cdot \mathbf{n} = \Lambda_M(\varphi^i), & \text{on } \Gamma_M. \end{array} \right. \quad (4)$$

The weak formulation of the coupled problem is: Find  $\varphi^i \in H^1(\Omega^i)$  such that  $\forall\varphi^t \in H^1(\Omega^i)$ ,

$$a(\varphi^i, \varphi^t) + I_\infty(\varphi^i, \varphi^t) + I_M(\varphi^i, \varphi^t) = 0, \quad (5)$$

with

$$a(\varphi^i, \varphi^t) = \int_{\Omega^i} \frac{\rho_0}{\rho_\infty} \left[ \nabla\overline{\varphi^i} \cdot \nabla\varphi^t - k_0^2\overline{\varphi^i}\varphi^t - ik_0 \left( (\mathbf{M}_0 \cdot \nabla\overline{\varphi^i})\varphi^t - (\mathbf{M}_0 \cdot \nabla\varphi^t)\overline{\varphi^i} - (\mathbf{M}_0 \cdot \nabla\overline{\varphi^i})(\mathbf{M}_0 \cdot \nabla\varphi^t) \right) \right], \quad (6)$$

$$I_\infty(\varphi^i, \varphi^t) = - \int_{\Gamma_\infty} \overline{\Lambda_\infty(\varphi^i)} \varphi^t, \quad (7)$$

$$I_M(\varphi^i, \varphi^t) = - \frac{\rho_M}{\rho_\infty} \int_{\Gamma_M} \overline{\Lambda_M(\varphi^i)} \varphi^t. \quad (8)$$

The  $\Lambda_\infty$  map can be expressed by means of boundary integral operators written on  $\Gamma_\infty$ . The problem in the exterior domain depends on  $\mathbf{M}_\infty$ . The next step is to transform (5) in such a way

that the problem in the exterior domain becomes the classical Helmholtz solution. This is of great interest, since we already dispose of a code evaluating the classical boundary integral operators for the classical Helmholtz equation.

### 3 Transformation of the coupled problem

The purpose of this section is to apply a transformation to the weak formulation (5), such that the  $\Lambda_\infty$  map can be expressed in a convenient way. The expression of  $\Lambda_M$  resulting of the transformation is also given, to obtain a complete transformed coupled formulation written in the same system of coordinates.

#### 3.1 Prandtl–Glauert transformation

When the carrier flow is at rest, the acoustic potential  $\varphi^e$  is solution of the Helmholtz equation. The Prandtl–Glauert transformation was introduced by Glauert in 1928 in [23], to study the compressible effects of the air on the lift of an airfoil. This transformation was applied for subsonic aeroacoustics problems by Amiet and Sears in [5] in 1970, by Astley and Bain [6] and more recently by our team in 2002 in [20].

**Definition 3.1.** *The Prandtl–Glauert transformation associated to  $\mathbf{M}_\infty$  consists in changing the space and time variables:*

$$\begin{cases} \tilde{\mathbf{x}}^\infty = \mathbf{x} + C_\infty (\mathbf{M}_\infty \cdot \mathbf{x}) \mathbf{M}_\infty, \\ \tilde{t}^\infty = t - \frac{\mathbf{M}_\infty \cdot \mathbf{x}}{c_\infty (1 - M_\infty^2)}, \end{cases} \quad (9)$$

where  $C_\infty = \frac{1}{M_\infty^2} \left( \frac{1}{\sqrt{1 - M_\infty^2}} - 1 \right)$ .

**Remark 3.1.** *We define a Prandtl–Glauert transformation associated to another vectors  $\mathbf{v}$  by changing  $\mathbf{M}_\infty$  and  $M_\infty$  by respectively  $\mathbf{v}$  and  $\|\mathbf{v}\|$  in Definition 3.1. In what follows, we note by  $\tilde{\cdot}^\infty$  the objects and operators transformed by the Prandtl–Glauert transformation associated to  $\mathbf{M}_\infty$  (normals, geometry, derivatives).*

**Proposition 3.1.** *To apply the Prandtl–Glauert transformation to a PDE in the frequency domain, one simply has to change the partial differential operators and the unknown function according to*

$$\begin{aligned} \nabla &\rightarrow \tilde{\nabla}^\infty + C_\infty \mathbf{M}_\infty \mathbf{M}_\infty \cdot \tilde{\nabla}^\infty, \\ \varphi(\mathbf{x}) &\rightarrow f(\tilde{\mathbf{x}}^\infty) \exp\left(-\frac{ik_\infty \mathbf{M}_\infty \cdot \tilde{\mathbf{x}}^\infty}{\sqrt{1 - M_\infty^2}}\right), \end{aligned} \quad (10)$$

where  $\tilde{\nabla}^\infty$  refers to derivations with respect to the transformed  $\tilde{\mathbf{x}}^\infty$  variables.

#### 3.2 Transformation of the volume integral term $a$ (6)

In what follows, the Prandtl–Glauert transformation is carried-out in the interior domain after the weak formulation has been written. Doing so, the obtained formulation is written in a form that uses operators that are already implemented in the code ACTIPOLE [37, 19]. Another choice can be to carry out the Prandtl–Glauert transformation first, and then write the weak formulation. The two formulations are equivalent, but this last case suits well the study of the existence and uniqueness of the formulation (see [15]).

We apply the change of variable and the change of unknown into the volumic integral  $a(\varphi^i, \varphi^t)$  defined in (6). Notice that we apply the same change for the test function:

$$\varphi^t(\mathbf{x}) \rightarrow f^t(\tilde{\mathbf{x}}^\infty) \exp\left(-\frac{ik_\infty \mathbf{M}_\infty \cdot \tilde{\mathbf{x}}^\infty}{\sqrt{1 - M_\infty^2}}\right).$$

This will enable to cancel the exponential term coming from the change of unknown function. The transformation  $H^1(\Omega^i) \ni \varphi^t \rightarrow f^t \exp\left(-\frac{ik_\infty \mathbf{M}_\infty \cdot \tilde{\mathbf{x}}^\infty}{\sqrt{1-M_\infty^2}}\right) \in H^1(\widetilde{\Omega}^{i^\infty})$  is surjective, and therefore this modification of test function is still compatible with the weak formulation.

Order-zero terms become

$$\begin{aligned}\varphi(x) &= \exp\left(-\frac{ik_\infty \mathbf{M}_\infty \cdot \tilde{\mathbf{x}}^\infty}{\sqrt{1-M_\infty^2}}\right) f(\tilde{\mathbf{x}}^\infty), \\ \varphi^t(x) &= \exp\left(-\frac{ik_\infty \mathbf{M}_\infty \cdot \tilde{\mathbf{x}}^\infty}{\sqrt{1-M_\infty^2}}\right) f^t(\tilde{\mathbf{x}}^\infty),\end{aligned}\tag{11}$$

and order-one terms:

$$\begin{aligned}\nabla \varphi(x) &= \exp\left(-\frac{ik_\infty \mathbf{M}_\infty \cdot \tilde{\mathbf{x}}^\infty}{\sqrt{1-M_\infty^2}}\right) \left(\widetilde{\mathcal{L}}_-^\infty f^i\right)(\tilde{\mathbf{x}}^\infty), \\ \nabla \varphi^t(x) &= \exp\left(-\frac{ik_\infty \mathbf{M}_\infty \cdot \tilde{\mathbf{x}}^\infty}{\sqrt{1-M_\infty^2}}\right) \left(\widetilde{\mathcal{L}}_+^\infty f^t\right)(\tilde{\mathbf{x}}^\infty).\end{aligned}\tag{12}$$

We define the spatial transformation  $L$ :

$$\mathbb{R}^3 \ni \mathbf{x} \rightarrow L(\mathbf{x}) := \tilde{\mathbf{x}}^\infty \in \mathbb{R}^3.\tag{13}$$

The transformation  $L|_{\Omega^i}$  is a dilatation of magnitude  $\frac{1}{\sqrt{1-M_\infty^2}}$  along  $\mathbf{M}_\infty$ , therefore  $|\text{Jac}(L_{\Omega^i}^{-1})| = J_\infty$ , where  $\text{Jac}$  denotes the jacobian. Hence,

$$\begin{aligned}a(\varphi^i, \varphi^t) &= J_\infty \int_{\widetilde{\Omega}^{i^\infty}} \frac{\rho_0}{\rho_\infty} \left[ \left(\widetilde{\mathcal{L}}_-^\infty \bar{f}^i\right) \cdot \left(\widetilde{\mathcal{L}}_+^\infty f^t\right) - k_0^2 \bar{f}^i f^t - ik_0 \left(\mathbf{M}_0 \cdot \left(\widetilde{\mathcal{L}}_-^\infty \bar{f}^i\right)\right) f^t \right. \\ &\quad \left. - \left(\mathbf{M}_0 \cdot \left(\widetilde{\mathcal{L}}_+^\infty f^t\right)\right) \bar{f}^i \right] - J_\infty \int_{\widetilde{\Omega}^{i^\infty}} \frac{\rho_0}{\rho_\infty} \left(\mathbf{M}_0 \cdot \left(\widetilde{\mathcal{L}}_-^\infty \bar{f}^i\right)\right) \left(\mathbf{M}_0 \cdot \left(\widetilde{\mathcal{L}}_+^\infty f^t\right)\right),\end{aligned}\tag{14}$$

where  $\widetilde{\mathcal{L}}_\pm^\infty := \widetilde{\nabla}^\infty + \left(C_\infty \mathbf{M}_\infty \cdot \widetilde{\nabla}^\infty \pm \frac{ik_\infty}{1-M_\infty^2}\right) \mathbf{M}_\infty$ .

**Remark 3.2.** *The expression (14) for the volume integral is more complicated than the expression (6). However, this will enable us to treat the coupling with the exterior domain in a simple way.*

### 3.3 Transformation of the surface integral term $I_\infty$ (7)

On geometries, the spatial change in the Prandtl–Glauert transformation results in a dilatation in the direction of  $\mathbf{M}_\infty$ . The normals then become

$$\tilde{\mathbf{n}}^\infty(\tilde{\mathbf{x}}^\infty) = \widetilde{K}_\infty^\infty(\mathbf{x}) \left[ \frac{\sqrt{1-M_\infty^2}}{M_\infty^2} (\mathbf{M}_\infty \cdot \mathbf{n}(\mathbf{x})) \mathbf{M}_\infty + \left(\mathbf{n}(\mathbf{x}) - \frac{(\mathbf{M}_\infty \cdot \mathbf{n}(\mathbf{x})) \mathbf{M}_\infty}{M_\infty^2}\right) \right],\tag{15}$$

where  $\widetilde{K}_\infty^\infty(\mathbf{x})$  is a normalization factor. We can write

$$\tilde{\mathbf{n}}^\infty(\tilde{\mathbf{x}}^\infty) = \widetilde{K}_\infty^\infty(\mathbf{x}) \left(\mathbf{n}(\mathbf{x}) + \widetilde{C}_\infty^\infty (\mathbf{M}_\infty \cdot \mathbf{n}(\mathbf{x})) \mathbf{M}_\infty\right),\tag{16}$$

where  $\widetilde{C}_\infty^\infty = \frac{1}{M_\infty^2} (\sqrt{1-M_\infty^2} - 1)$ . Using the normalization condition,

$$\widetilde{K}_\infty^\infty(\mathbf{x}) = \frac{1}{\sqrt{1 - (\mathbf{M}_\infty \cdot \mathbf{n}(\mathbf{x}))^2}}.\tag{17}$$

In the same fashion, we can write the normals on the initial objects with respect to the normals on the transformed objects:

$$\mathbf{n}(\mathbf{x}) = K_\infty(\tilde{\mathbf{x}}^\infty) \left(\tilde{\mathbf{n}}^\infty(\tilde{\mathbf{x}}^\infty) + C_\infty (\mathbf{M}_\infty \cdot \tilde{\mathbf{n}}^\infty(\tilde{\mathbf{x}}^\infty)) \mathbf{M}_\infty\right),\tag{18}$$

where  $C_\infty = \frac{1}{M_\infty^2} \left( \frac{1}{\sqrt{1-M_\infty^2}} - 1 \right)$  and

$$K_\infty(\tilde{\mathbf{x}}^\infty) = \sqrt{1 + \frac{(\mathbf{M}_\infty \cdot \mathbf{n}(\mathbf{x}))^2}{1 - M_\infty^2}}. \quad (19)$$

Consider  $L|_{\Gamma_\infty}$ , the restriction of  $L$  to the 2-dimensional manifold  $\Gamma_\infty$ . Let  $\mathbf{x} \in \Gamma_\infty$ . Let  $\mathbf{m}_1 := \frac{\mathbf{M}_\infty}{M_\infty}$ ,  $\mathbf{m}_2 := \frac{\mathbf{n} - (\mathbf{m}_1 \cdot \mathbf{n})\mathbf{m}_1}{\|\mathbf{n} - (\mathbf{m}_1 \cdot \mathbf{n})\mathbf{m}_1\|}$  and  $\mathbf{m}_3$  such that  $(\mathbf{m}_1, \mathbf{m}_2, \mathbf{m}_3)$  is an orthonormal triplet. Let  $N := \mathbf{n} \cdot \mathbf{m}_1$ . By construction,  $\mathbf{n} = N\mathbf{m}_1 + \sqrt{1-N^2}\mathbf{m}_2$ . Then, we define  $\mathbf{t}_1 := -\sqrt{1-N^2}\mathbf{m}_1 + N\mathbf{m}_2$  and  $\mathbf{t}_2 := \mathbf{m}_3$ , see Figure 3. It is direct to verify that  $(\mathbf{t}_1, \mathbf{t}_2)$  is an orthonormal doublet, and that

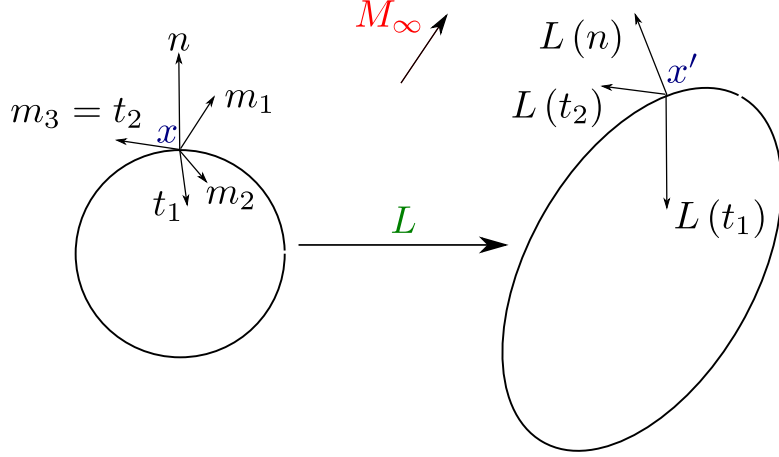


Figure 3: Transformation of a local basis on  $\Gamma_\infty$  by the Prandtl–Glauert transformation.

$\mathbf{t}_1 \cdot \mathbf{n} = \mathbf{t}_2 \cdot \mathbf{n} = 0$ . Therefore,  $(\mathbf{t}_1, \mathbf{t}_2)$  is an orthonormal basis for the hyperplane tangent to  $\widetilde{\Gamma}_\infty^\infty$  in  $\mathbf{x}$ , and  $|\text{Jac}(L|_{\Gamma_\infty})| = |\det(L(\mathbf{t}_1), L(\mathbf{t}_2))|$ . Since we have identified in  $\mathbf{t}_1$  and  $\mathbf{t}_2$  the components parallel and orthogonal to  $\mathbf{M}_\infty$ , there holds  $L(\mathbf{t}_1) = \frac{\sqrt{1-N^2}}{\sqrt{1-M_\infty^2}}\mathbf{m}_1 + N\mathbf{m}_2$  and  $L(\mathbf{t}_2) = \mathbf{m}_3$ , which are orthogonal. Therefore,  $|\text{Jac}(L|_{\Gamma_\infty}^{-1})| = \frac{1}{\|L(\mathbf{t}_1)\|\|L(\mathbf{t}_2)\|} = \frac{\sqrt{1-M_\infty^2}}{\sqrt{1-(\mathbf{M}_\infty \cdot \mathbf{n})^2}} = J_\infty \widetilde{K}_\infty^\infty$ .

Using the continuity of the carrier flow through  $\Gamma_\infty$  and plugging the changes for order zero and order one terms, and the jacobian  $\text{Jac}(L|_{\Gamma_\infty}^{-1})$ , there holds

$$I_\infty(\varphi^i, \varphi^t) = -J_\infty \int_{\widetilde{\Gamma}_\infty^\infty} \widetilde{K}_\infty^\infty \left[ \left( \widetilde{\nabla}^\infty \bar{f}^i - \frac{ik_\infty \mathbf{M}_\infty}{\sqrt{1-M_\infty^2}} \bar{f}^i \right) \cdot \left( \mathbf{n} + \left( C_\infty - \frac{1}{\sqrt{1-M_\infty^2}} \right) (\mathbf{M}_\infty \cdot \mathbf{n}) \mathbf{M}_\infty \right) + ik_\infty \bar{f} (\mathbf{M}_\infty \cdot \mathbf{n}) \right] f^t. \quad (20)$$

Since  $C_\infty - \frac{1}{\sqrt{1-M_\infty^2}} = \widetilde{C}_\infty^\infty$ , we recognize the expression of  $\frac{\widetilde{\mathbf{n}}^\infty}{\widetilde{K}_\infty^\infty}$ . Reorganizing the terms:

$$I_\infty(\varphi^i, \varphi^t) = -J_\infty \int_{\widetilde{\Gamma}_\infty^\infty} \widetilde{\nabla}^\infty \bar{f}^i \cdot \widetilde{\mathbf{n}}^\infty f^t + J_\infty \int_{\widetilde{\Gamma}_\infty^\infty} ik_\infty \bar{f}^i \left( \widetilde{K}_\infty^\infty (\mathbf{M}_\infty \cdot \mathbf{n}) - \frac{\mathbf{M}_\infty \cdot \widetilde{\mathbf{n}}^\infty}{\sqrt{1-M_\infty^2}} \right) f^t. \quad (21)$$

Finally, from relation (16),  $\mathbf{M}_\infty \cdot \widetilde{\mathbf{n}}^\infty = \widetilde{K}_\infty^\infty \sqrt{1-M_\infty^2} (\mathbf{M}_\infty \cdot \mathbf{n})$ , and

$$I_\infty(\varphi^i, \varphi^t) = -J_\infty \int_{\widetilde{\Gamma}_\infty^\infty} \widetilde{\nabla}^\infty \bar{f}^i \cdot \widetilde{\mathbf{n}}^\infty f^t. \quad (22)$$

**Remark 3.3.** Notice the extreme simplification of the surface integral term (22). The direct coupling with the BEM is possible thanks to this particular form of the surface integral term.



### 3.4 Derivation of the transformed $\widetilde{\Lambda}_\infty^\infty$ map

From [40, Section 10.3.1], applying the Prandtl–Glauert transformation, the transformed acoustic potential in the exterior domain  $f^e$  satisfies

$$\widetilde{\Delta}^\infty f^e + \widetilde{k}_\infty^{\infty 2} f^e = 0, \quad \text{in } \widetilde{\Omega}^{\infty e}, \quad (23)$$

where  $\widetilde{k}_\infty^{\infty} := \frac{k_\infty}{\sqrt{1-M_\infty^2}}$  is the modified wavenumber. This is a classical Helmholtz equation. The Sommerfeld radiation condition

$$\widetilde{r}^\infty \left( \frac{\partial f^e}{\partial \widetilde{r}^\infty} - i \widetilde{k}_\infty^{\infty} f^e \right) \rightarrow 0, \quad \widetilde{r}^\infty \rightarrow +\infty \quad (24)$$

is enforced as well to ensure uniqueness of the solution [36].

The derivation of a Dirichlet-to-Neumann map  $\Lambda_\infty$  for the Helmholtz exterior problem (23) is classical. The procedure is detailed for instance in [15]. We recall the main steps for completeness of the presentation. A function is called a radiating Helmholtz solution, if it solves the classical Helmholtz solution in  $\Omega^e$  and in  $\mathbb{R}^3 \setminus \Omega^e$ , and if it satisfies the Sommerfeld radiation condition. A radiating Helmholtz solution  $v$  can be represented from the jump of its traces on  $\Gamma$  [30, Theorem 3.1.1]

$$v = -\mathcal{S}[\nabla v \cdot \mathbf{n}] + \mathcal{D}[v] \quad \text{in } \Omega^e \cup \mathbb{R}^3 \setminus \Omega^e, \quad (25)$$

where  $\mathcal{S}$  and  $\mathcal{D}$  are the single-layer and double-layer potentials associated with the Helmholtz equation, defined such that

$$\mathcal{S}\lambda(\mathbf{x}) = \int_{\Gamma_\infty} G(\mathbf{x}, \mathbf{y}) \lambda(\mathbf{y}) d\mathbf{y}, \quad \mathcal{D}\mu(\mathbf{x}) = \int_{\Gamma_\infty} \frac{\partial G(\mathbf{x}, \mathbf{y})}{\partial n_x} \lambda(\mathbf{y}) d\mathbf{y}, \quad \forall \mathbf{x} \in \Omega^e \cup \mathbb{R}^3 \setminus \Omega^e,$$

where  $G(\mathbf{x}, \mathbf{y}) := \frac{\exp(-ik_\infty|\mathbf{x}-\mathbf{y}|)}{4\pi|\mathbf{x}-\mathbf{y}|}$  is the fundamental solution to the classical Helmholtz equation with wavenumber  $k_\infty$ . If  $v$  is a radiating Helmholtz solution, then [30, Theorem 3.1.2]

$$\begin{bmatrix} \frac{1}{2}I - D & S \\ N & \frac{1}{2}I + D^* \end{bmatrix} \begin{bmatrix} [v]_{\Gamma_\infty} \\ [\nabla v \cdot \mathbf{n}]_{\Gamma_\infty} \end{bmatrix} = - \begin{bmatrix} v^i \\ \nabla v^i \cdot \mathbf{n} \end{bmatrix} \quad \text{on } \Gamma_\infty, \quad (26)$$

where  $S$ ,  $D$ ,  $D^*$  and  $N$  are respectively the single-layer, double-layer, transpose of the double-layer and hypersingular boundary integral operators defined as,  $\forall \mathbf{x} \in \Gamma_\infty$ ,

$$\begin{aligned} \mathcal{S}\lambda(\mathbf{x}) &= \int_{\Gamma_\infty} G(\mathbf{x}, \mathbf{y}) \lambda(\mathbf{y}) d\mathbf{y}, & \mathcal{D}\mu(\mathbf{x}) &= \int_{\Gamma_\infty} \frac{\partial G(\mathbf{x}, \mathbf{y})}{\partial n_y} \mu(\mathbf{y}) d\mathbf{y}, \\ \mathcal{D}^*\lambda(\mathbf{x}) &= \int_{\Gamma_\infty} \frac{\partial G(\mathbf{x}, \mathbf{y})}{\partial n_x} \lambda(\mathbf{y}) d\mathbf{y}, & \mathcal{N}\mu(\mathbf{x}) &= \oint_{\Gamma_\infty} \frac{\partial^2 G(\mathbf{x}, \mathbf{y})}{\partial n_x \partial n_y} \mu(\mathbf{y}) d\mathbf{y}. \end{aligned}$$

Consider the function  $u$  such that  $u|_{\widetilde{\Omega}^e} := f^e$  and  $u|_{\widetilde{\Omega}^i} := 0$ , where  $f^e$  solves (23), so that  $u$  is a radiating Helmholtz solution. Under the Prandtl–Glauert transformation, the transmission conditions at  $\Gamma_\infty$  lead to the continuity of the transformed potential and its normal derivative:

$$\begin{aligned} f^i &= f^e = f, & \text{on } \widetilde{\Gamma}_\infty^\infty, \\ \widetilde{\nabla}^\infty f^i \cdot \widetilde{\mathbf{n}}^\infty &= \widetilde{\nabla}^\infty f^e \cdot \widetilde{\mathbf{n}}^\infty = \widetilde{\nabla}^\infty f \cdot \widetilde{\mathbf{n}}^\infty, & \text{on } \widetilde{\Gamma}_\infty^\infty. \end{aligned} \quad (27)$$

Using (26) with  $v = u$  yields

$$\begin{bmatrix} \frac{1}{2}I - \widetilde{D}^\infty & \widetilde{S}^\infty \\ \widetilde{N}^\infty & \frac{1}{2}I + \widetilde{D}^{*\infty} \end{bmatrix} \begin{bmatrix} f \\ \widetilde{\nabla}^\infty f \cdot \widetilde{\mathbf{n}}^\infty \end{bmatrix} = \begin{bmatrix} 0 \\ 0 \end{bmatrix}, \quad \text{on } \widetilde{\Gamma}_\infty^\infty, \quad (28)$$

where  $\widetilde{S}^\infty$ ,  $\widetilde{D}^\infty$ ,  $\widetilde{D}^{*\infty}$  and  $\widetilde{N}^\infty$  are respectively the single-layer, double-layer, transpose of the double-layer and hypersingular boundary integral operators for the Helmholtz equation obtained in the

Prandtl–Glauert transformed space with modified wavenumber  $\widetilde{k}_\infty^\infty$ :

$$\begin{aligned}\widetilde{S}^\infty \lambda(\widetilde{\mathbf{x}}^\infty) &= \int_{\widetilde{\Gamma}_\infty} \hat{G}(\widetilde{\mathbf{x}}^\infty, \widetilde{\mathbf{y}}^\infty) \lambda(\widetilde{\mathbf{y}}^\infty) d\widetilde{\mathbf{y}}^\infty, & \widetilde{D}^\infty \mu(\widetilde{\mathbf{x}}^\infty) &= \int_{\widetilde{\Gamma}_\infty} \frac{\partial \hat{G}(\widetilde{\mathbf{x}}^\infty, \widetilde{\mathbf{y}}^\infty)}{\partial \widetilde{n}_y^\infty} \mu(\widetilde{\mathbf{y}}^\infty) d\widetilde{\mathbf{y}}^\infty, \\ \widetilde{D}^{*\infty} \lambda(\widetilde{\mathbf{x}}^\infty) &= \int_{\widetilde{\Gamma}_\infty} \frac{\partial \hat{G}(\widetilde{\mathbf{x}}^\infty, \widetilde{\mathbf{y}}^\infty)}{\partial \widetilde{n}_x^\infty} \lambda(\widetilde{\mathbf{y}}^\infty) d\widetilde{\mathbf{y}}^\infty, & \widetilde{N}^\infty \mu(\widetilde{\mathbf{x}}^\infty) &= \oint_{\widetilde{\Gamma}_\infty} \frac{\partial^2 \hat{G}(\widetilde{\mathbf{x}}^\infty, \widetilde{\mathbf{y}}^\infty)}{\partial \widetilde{n}_x^\infty \partial \widetilde{n}_y^\infty} \mu(\widetilde{\mathbf{y}}^\infty) d\widetilde{\mathbf{y}}^\infty,\end{aligned}$$

where  $\hat{G}(\mathbf{x}, \mathbf{y}) := \frac{\exp(-ik_\infty |\mathbf{x}-\mathbf{y}|)}{4\pi|\mathbf{x}-\mathbf{y}|}$  is the fundamental solution to the classical Helmholtz equation with modified wavenumber  $k_\infty$ .

Using the first line of (28), there holds

$$\widetilde{\nabla}^\infty f \cdot \widetilde{\mathbf{n}}^\infty = \widetilde{S}^{\infty-1} \left( D - \frac{1}{2} I \right) (f). \quad (29)$$

Injecting (29) into the second line of (28), an expression of the  $\widetilde{\Lambda}_\infty^\infty$  map can be obtained in the following form:

$$\widetilde{\nabla}^\infty f \cdot \widetilde{\mathbf{n}}^\infty = \widetilde{\Lambda}_\infty^\infty (f) := -\widetilde{N}^\infty (f) + \left( \frac{1}{2} I - \widetilde{D}^{*\infty} \right) \widetilde{S}^{\infty-1} \left( D - \frac{1}{2} I \right) (f). \quad (30)$$

**Remark 3.4.** *Even though it is possible to write integral equations for the uniformly convected Helmholtz equation (see [7]), the Prandtl–Glauert transformation allows us to write integral equation that only involves the Green kernel associated to the Helmholtz equation. Hence, we can profit from our validated code ACTIPOLE developed by our team [37, 19].*

### 3.5 Computation of the coupling integral term $I_M$ (8)

The engine is modeled by a semi-infinite waveguide. To simplify the presentation, the waveguide is supposed to be oriented along the local axis  $\mathbf{e}_z$  so that  $\Gamma_M$  is orthogonal to  $\mathbf{e}_z$  (see Figure 2). More precisely, we suppose that  $\Gamma_M$  is included in the plane  $z = 0$ . Moreover, the flow  $\mathbf{M}_M$  is parallel to  $\mathbf{e}_z$ .

In  $\Omega_M$ , the acoustic potential is decomposed into an incident and a diffracted potential:  $\varphi := \varphi^{\text{inc}} + \varphi^{\text{diff}}$ , both solution to the following convected Helmholtz equation:

$$\Delta \varphi^{\text{inc,diff}} + k_M^2 \varphi^{\text{inc,diff}} + 2ik_M \mathbf{M}_M \cdot \nabla \varphi^{\text{inc,diff}} - \mathbf{M}_M \cdot \nabla \left( \mathbf{M}_M \cdot \nabla \varphi^{\text{inc,diff}} \right) = 0 \quad \text{in } \Omega_M. \quad (31)$$

The incident potential is known, whereas the diffracted potential is unknown. Under these assumptions, the following decompositions hold [29, 12]:

$$\begin{aligned}\varphi^{\text{inc}}(x, y, z) &= \sum_{(m \times n) \in \mathbb{Z} \times \mathbb{N}} \alpha_{mn} v_{mn}(x, y) \exp(ik_{mn}^+ z) \quad \text{in } \Omega_M, \\ \varphi^{\text{diff}}(x, y, z) &= \sum_{(m \times n) \in \mathbb{Z} \times \mathbb{N}} \beta_{mn} v_{mn}(x, y) \exp(ik_{mn}^- z) \quad \text{in } \Omega_M,\end{aligned} \quad (32)$$

where the incident modal coefficients  $\alpha_{mn} := \int_{\Gamma_M} \overline{\varphi^{\text{inc}}} v_{mn}$  are supposed known (input of the problem) while the diffracted modal coefficients  $\beta_{mn} := \int_{\Gamma_M} \overline{\varphi^{\text{diff}}} v_{mn}$  are some unknowns of the problem. The basis functions  $v_{mn}$  constitute a modal basis function chosen to be orthonormal. For instance for a cylindrical duct of radius  $R$ , the functions  $v_{mn}$  are defined in polar coordinates by [29, 12] and for  $n > 0$  by

$$v_{m,n}(r, \theta) := V_{m,n} J_m \left( \frac{r_{m,n}}{R} r \right) \exp(im\theta), \quad (33)$$

with  $r_{m,n}$  the  $n$ -th zero of the derivative of  $m$ -th Bessel function of the first kind  $J_m$ ,  $V_{m,n}$  the normalization factor such that  $\int_{\Gamma_M} v_{m,n}^2 = 1$ , and

$$k_{mn}^{\pm} = \frac{-k_M M_M \pm \sqrt{k_M^2 - (1 - M_M^2) \left(\frac{r_{m,n}}{R}\right)^2}}{1 - M_M^2} \quad \text{for propagating modes } (k_{mn}^{\pm} \in \mathbb{R}), \quad (34)$$

$$k_{mn}^{\pm} = \frac{-k_M M_M \pm i \sqrt{(1 - M_M^2) \left(\frac{r_{m,n}}{R}\right)^2 - k_M^2}}{1 - M_M^2} \quad \text{for evanescent modes } (k_{mn}^{\pm} \in \mathbb{C}), \quad (35)$$

the wavenumber of each mode. For all  $m \in \mathbb{Z}$  and for all  $n \in \mathbb{N}^*$ , the mode  $(m, n)$  is either propagating or evanescent. There exists a finite number of propagating modes and an infinite number of evanescent modes.

Based on this decomposition, the expression of the Dirichlet-to-Neumann operator  $\Lambda_M$  is [11, 26]:

$$(\nabla \varphi - (\mathbf{M}_M \cdot \nabla \varphi) \mathbf{M}_M + ik_M \varphi \mathbf{M}_M) \cdot \mathbf{n} = \Lambda_M(\varphi) := \sum_{(m \times n) \in \mathbb{Z} \times \mathbb{N}} (\alpha_{mn} Y_{mn}^+ + \beta_{mn} Y_{mn}^-) v_{mn} \quad \text{on } \Gamma_M, \quad (36)$$

where

$$Y_{mn}^{\pm} := -i [k_{mn}^{\pm} (1 - M_M^2) + k_M M_M] = \begin{cases} \mp i \sqrt{k_M^2 - (1 - M_M^2) \left(\frac{r_{m,n}}{R}\right)^2} & \text{for the propagating modes,} \\ \pm \sqrt{(1 - M_M^2) \left(\frac{r_{m,n}}{R}\right)^2 - k_M^2} & \text{for the evanescent modes.} \end{cases} \quad (37)$$

By definition,

$$\begin{aligned} I_M(\varphi, \varphi^t) &= -\frac{\rho_M}{\rho_{\infty}} \int_{\Gamma_M} \overline{\Lambda_M(\varphi)} \varphi^t \\ &= -\frac{\rho_M}{\rho_{\infty}} \sum_{(m \times n)} \overline{\alpha_{mn} Y_{mn}^+} \int_{\Gamma_M} \overline{v_{mn}} \varphi^t - \frac{\rho_M}{\rho_{\infty}} \sum_{(m \times n)} \overline{\beta_{mn} Y_{mn}^-} \int_{\Gamma_M} \overline{v_{mn}} \varphi^t. \end{aligned}$$

Notice that since  $\Gamma_M$  is included in the plane  $z = 0$  and  $M_{\infty}$  is directed along  $\mathbf{e}_z$ , then  $\widetilde{\Gamma}_M^{\infty} = \Gamma_M$ , and  $\widetilde{v_{mn}}^{\infty} = v_{mn}$  on  $\Gamma_M$ , where  $\widetilde{v_{mn}}^{\infty}$  is the Prandtl–Glauert transformation of  $v_{mn}$ . Hence,  $\alpha_{mn} = \int_{\widetilde{\Gamma}_M^{\infty}} f^{\text{inc}} \widetilde{v_{mn}}^{\infty}$  and  $\beta_{mn} = \int_{\widetilde{\Gamma}_M^{\infty}} f^{\text{diff}} \widetilde{v_{mn}}^{\infty}$ , where  $f^{\text{inc}}$  and  $f^{\text{diff}}$  are the Prandtl–Glauert transformation of respectively  $\varphi^{\text{inc}}$  and  $\varphi^{\text{diff}}$ . In view of the coupling in the coordinates and geometry transformed by the Prandtl–Glauert transformation, we can write

$$I_M(\varphi, \varphi^t) = -\frac{\rho_M}{\rho_{\infty}} \sum_{(m \times n)} \left( \overline{\alpha_{mn} Y_{mn}^+} + \overline{\beta_{mn} Y_{mn}^-} \right) \int_{\widetilde{\Gamma}_M^{\infty}} \overline{v_{mn}}^{\infty} f^t. \quad (38)$$

Let  $\gamma_{pq} = \int_{\widetilde{\Gamma}_M^{\infty}} \overline{f^t} \widetilde{v_{pq}}^{\infty}$ , so that  $f^t = \sum_{(p \times q)} \gamma_{pq} \widetilde{v_{pq}}^{\infty}$ . Then, using the orthonormality of the modal basis

$\int_{\Gamma_M} \overline{v_{mn}} v_{pq} = \delta_{m,p} \delta_{n,q}$ , where  $\delta_{i,j}$  refers to the Kronecker delta,

$$I_M(\varphi, \varphi^t) = -\frac{\rho_M}{\rho_{\infty}} \sum_{(m \times n)} \left( \overline{\alpha_{mn} Y_{mn}^+} + \overline{\beta_{mn} Y_{mn}^-} \right) \gamma_{mn}. \quad (39)$$

To write a direct coupled problem, it is more practical to consider the coefficient of decomposition of the total acoustic potential. Consider  $\varsigma_{mn} := \int_{\Gamma_M} \overline{\varphi} v_{mn} = \alpha_{mn} + \beta_{mn}$ , there holds

$$I_M(\varphi, \varphi^t) = -\frac{\rho_M}{\rho_{\infty}} \sum_{(m \times n)} \left( \overline{\alpha_{mn}} \left( \overline{Y_{mn}^+} - \overline{Y_{mn}^-} \right) + \overline{\varsigma_{mn} Y_{mn}^-} \right) \gamma_{mn}. \quad (40)$$

### 3.6 Transformed coupled problem

To treat the operator inversion in the definition (30) of  $\widetilde{\Lambda}_\infty^\infty$ , we introduce  $\lambda$  such that

$$\lambda := \left(\widetilde{S}^\infty\right)^{-1} \circ \left(\left(\widetilde{D}^\infty - \frac{1}{2}I\right) f\right), \quad (41)$$

so that

$$\begin{cases} \widetilde{\Lambda}_\infty^\infty(f) = \widetilde{N}^\infty f + \left(\frac{1}{2}I - \widetilde{D}^{*\infty}\right) \lambda, \\ \left(\widetilde{D}^\infty - \frac{1}{2}I\right) f - \widetilde{S}^\infty \lambda = 0. \end{cases} \quad (42)$$

Plugging (42) into (14) and using the expression (40) for  $I_M$  leads to the following weak formulation for the coupled problem: find  $(f, \lambda) \in H^1(\widetilde{\Omega}^i) \times H^{-\frac{1}{2}}(\widetilde{\Gamma}_\infty^\infty)$  such that  $\forall (f^t, \lambda^t) \in H^1(\widetilde{\Omega}^i) \times H^{-\frac{1}{2}}(\widetilde{\Gamma}_\infty^\infty)$ , letting  $\varsigma_{mn} = \int_{\widetilde{\Gamma}_M^\infty} \overline{f v_{mn}^\infty}$  and  $\gamma_{mn} = \int_{\widetilde{\Gamma}_M^\infty} \overline{f^t v_{mn}^\infty}$ ,

$$\begin{cases} \widetilde{a}^\infty(f^i, f^t) - \int_{\widetilde{\Gamma}_\infty^\infty} \overline{N^\infty f f^t} + \int_{\widetilde{\Gamma}_\infty^\infty} \overline{\left(\widetilde{D}^{*\infty} - \frac{1}{2}I\right) \lambda f^t} - \frac{\rho_M}{\rho_\infty} \sum_{(m \times n)} \overline{\varsigma_{mn} Y_{mn}^-} \gamma_{mn} \\ = \frac{\rho_M}{\rho_\infty} \sum_{(m \times n)} \overline{\alpha_{mn} \left(Y_{mn}^+ - Y_{mn}^-\right)} \gamma_{mn}, \\ \int_{\widetilde{\Gamma}_\infty^\infty} \overline{\left(\widetilde{D}^\infty - \frac{1}{2}I\right) f \lambda^t} - \int_{\widetilde{\Gamma}_\infty^\infty} \overline{\widetilde{S}^\infty \lambda \lambda^t} = 0. \end{cases} \quad (43)$$

with  $\widetilde{a}^\infty(f, f^t) = a(\varphi, \varphi^t)$ , where  $a$  is defined in (14).

## 4 Methodologies for the numerical resolutions

The weak formulation (43) has to be solved numerically. To do so, we first introduce an unstructured volumic mesh  $\mathcal{V}_h$  of the domain  $\widetilde{\Omega}^i$  made of tetrahedron. The surfacic meshes  $\mathcal{S}_{h,M}$  and  $\mathcal{S}_{h,\infty}$  are obtained as the boundary faces of  $\mathcal{V}_h$  associated to  $\widetilde{\Gamma}_M^\infty$  and  $\widetilde{\Gamma}_\infty^\infty$  respectively. We denote  $\mathcal{V}_h^1$  and  $\mathcal{S}_{h,M}^1$  the finite element spaces  $\mathbb{P}^1$  on respectively  $\mathcal{V}_h$  and  $\mathcal{S}_{h,M}$ , and  $\mathcal{S}_{h,\infty}^0$  the finite element space  $\mathbb{P}^0$  on  $\mathcal{S}_{h,\infty}$ . To introduce a numerical approximation, we have to consider a finite number of modes. We consider then  $M_{\text{tot}}^{\text{inc}}$  incident modes and  $M_{\text{tot}}^{\text{diff}}$  diffracted modes, with  $M_{\text{tot}}^{\text{diff}} \geq M_{\text{tot}}^{\text{inc}}$ .

We obtain the following discrete conforming approximation of (43): Find  $(f_h, \lambda_h) \in \mathcal{V}_h^1 \times \mathcal{S}_{h,\infty}^0$  such that  $\forall (f_h^t, \lambda_h^t) \in \mathcal{V}_h^1 \times \mathcal{S}_{h,\infty}^0$ , letting  $\varsigma_{mnh} = \int_{\widetilde{\Gamma}_M^\infty} \overline{f_h v_{mn}^\infty}$  and  $\gamma_{pqh} = \int_{\widetilde{\Gamma}_M^\infty} \overline{f_h^t v_{mn}^\infty}$ ,

$$\begin{cases} \widetilde{a}^\infty(f_h, f_h^t) - \int_{\widetilde{\Gamma}_\infty^\infty} \overline{N^\infty f_h f_h^t} + \int_{\widetilde{\Gamma}_\infty^\infty} \overline{\left(\widetilde{D}^{*\infty} - \frac{1}{2}I\right) \lambda_h f_h^t} - \frac{\rho_M}{\rho_\infty} \sum_{(m \times n)}^{M_{\text{tot}}^{\text{diff}}} \overline{\varsigma_{mnh} Y_{mn}^-} \gamma_{mnh} \\ = \frac{\rho_M}{\rho_\infty} \sum_{(m \times n)}^{M_{\text{tot}}^{\text{diff}}} \overline{\alpha_{mn} \left(Y_{mn}^+ - Y_{mn}^-\right)} \gamma_{mnh}, \\ \int_{\widetilde{\Gamma}_\infty^\infty} \overline{\left(\widetilde{D}^\infty - \frac{1}{2}I\right) f_h \lambda_h^t} - \int_{\widetilde{\Gamma}_\infty^\infty} \overline{\widetilde{S}^\infty \lambda_h \lambda_h^t} = 0. \end{cases} \quad (44)$$

Notice that since  $M_{\text{tot}}^{\text{diff}} \geq M_{\text{tot}}^{\text{inc}}$ , then some  $\alpha_{mn}$  are zero.

Let  $(\theta_i)_{1 \leq i \leq p}$  and  $(\psi_i)_{1 \leq i \leq q}$  denote finite element bases for  $\mathcal{V}_h^1$  and  $\mathcal{S}_{h,\infty}^0$  respectively. The decompositions of  $f_h \in \mathcal{V}_h^1$  and  $\lambda_h \in \mathcal{S}_{h,\infty}^0$  on these bases are written in the form  $f_h = \sum_{i=1}^p f_i \theta_i$  and  $\lambda_h = \sum_{i=1}^q \lambda_i \psi_i$ . Let

$$u := \begin{pmatrix} (f_i)_{1 \leq i \leq p} \\ (\lambda_i)_{1 \leq i \leq q} \end{pmatrix}, \quad b := \begin{pmatrix} \left( \frac{\rho_M}{\rho_\infty} \sum_{(m \times n)}^{M_{\text{tot}}^{\text{diff}}} \overline{\alpha_{mn} \left(Y_{mn}^+ - Y_{mn}^-\right)} \int_{\widetilde{\Gamma}_M^\infty} \overline{\theta_i v_{mn}^\infty} \right)_{1 \leq i \leq p} \\ (0)_{1 \leq i \leq q} \end{pmatrix}, \quad (45)$$

and

$$A := \left( \begin{array}{c|c} C_{ij} & \int_{\widetilde{\Gamma}_\infty} \left( \widetilde{D}^{*\infty} - \frac{1}{2}I \right) \psi_j \theta_i \\ \hline \int_{\widetilde{\Gamma}_\infty} \left( \widetilde{D}^\infty - \frac{1}{2}I \right) \theta_j \psi_i & - \int_{\widetilde{\Gamma}_\infty} \widetilde{S}^\infty \psi_j \psi_i \end{array} \right), \quad (46)$$

with

$$C_{ij} := \widetilde{a}^\infty(\theta_j, \theta_i) - \int_{\widetilde{\Gamma}_\infty} \widetilde{N}^\infty \theta_j \theta_i - \frac{\rho M}{\rho_\infty} \sum_{(m \times n)}^{M'_{\text{tot}} \text{diff}} \overline{Y_{mn}} \int_{\widetilde{\Gamma}_M} \theta_i \widetilde{v}_{mn}^\infty \int_{\widetilde{\Gamma}_M} \overline{\theta_j v_{mn}^\infty}. \quad (47)$$

The linear system resulting from (43) is

$$Au = b. \quad (48)$$

The matrix  $A$  contains both dense and sparse blocks. For instance,  $\widetilde{a}^\infty(\theta_j, \theta_i)$  is nonzero only if  $\theta_i$  and  $\theta_j$  are associated with degrees of freedom contained in close enough tetrahedrons. On the contrary, the surface integral terms are nonzero as long as the degrees of freedom are located in the corresponding surface. For instance,  $\int_{\widetilde{\Gamma}_\infty} \widetilde{N}^\infty \theta_j \theta_i$  is nonzero if  $\theta_i$  and  $\theta_j$  are associated with degrees of freedom located on  $\Gamma_\infty$ , even if they are far away. To solve (48), a block Gaussian elimination, known as the Schur complement [41], is first carried out on the sparse matrices to eliminate the unknowns of the volume domain. The remaining system can then be solved either with a direct classical  $LU$  solver or an iterative solver. Moreover in the case of the iterative solver, the fast multipole method (FMM) [33, 14, 22] can be used to take into account the dense matrix relative to the BEM formulation.

These resolution strategies are implemented in the ACTIPOLE software and make use of the MUMPS solver [3, 4] for the sparse matrix elimination and of an in-house solver with out-core and MPI functionalities for the remaining system.

## 5 Numerical results

Even if the test cases are axisymmetric, all the following computations are full-3D computations. They have been run on a machine with 2x6 intel Xeon ‘‘Westmere’’ processors running at 3.06GHz with 72GB RAM per node and infiniband QDR.

### 5.1 Zero flow

The first test case is designed to check the validity of the modeling for a non-uniform medium without flow and of the FEM-BEM coupling. It consists of a sphere of radius 1 m centered at the origin with different fluid properties:  $\rho_0 = \rho_\infty$ ,  $c_0 = 2c_\infty$  inside the sphere and  $\rho_\infty = 1.2 \text{ kg.m}^{-3}$ ,  $c_\infty = 340 \text{ m.s}^{-1}$  outside the sphere. The acoustic potential source is a monopole located outside the sphere at  $(0, 0, 2.5)$ . The observable is located outside the sphere at  $(0, 1.7, 0)$  and the frequency range of interest is 11 to 500 Hz.

The reference result is obtained by a Mie series and the comparison of the scattered pressure with the FEM-BEM solution is visible on Figure 4. The volumic domain used for the FEM-BEM computation is a sphere of radius 1.07 m to ensure the continuity of the speed of sound at  $\Gamma_\infty$ . The mesh has an average edge length of 85 mm ( $\lambda/8$  for 500 Hz, the highest frequency) and contains 19,494 dofs (80,616 tetrahedrons and 4,672 triangles on  $\Gamma_\infty$ ). The relative error on the module of the total pressure is between  $7 \times 10^{-4}$  (at 100 Hz) and  $3 \times 10^{-2}$  (at 500 Hz).

### 5.2 Modal test case without flow

Consider a modal cylindrical duct of length  $L = 1$  m and radius  $R = 0.25$  m without flow (Figure 5). The frequency of the source is 2,040 Hz. Three kinds of computation have been performed with ACTIPOLE: classical BEM formulation, full FEM formulation, coupled FEM-BEM formulation in the same domain of computation. The iterative solver has been chosen with a tolerance on the residual of  $10^{-8}$ . Comparisons have been carried out on the transmission coefficients between  $\Gamma_{M_1}$  and  $\Gamma_{M_2}$  of the mode  $m = 0$ ,  $n = 1$  (Table 1) and their theoretical values.

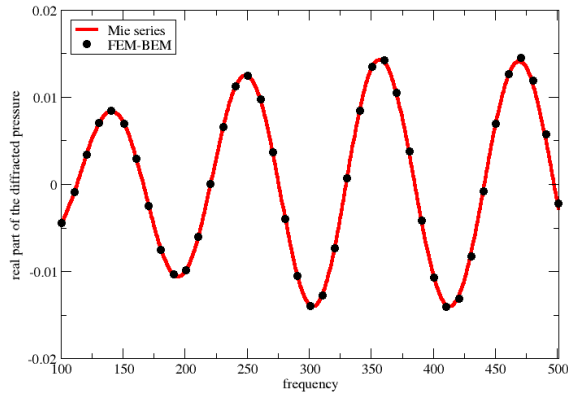


Figure 4: Zero flow: Real part of the scattered pressure at the sensor in function of the frequency (validation of the FEM-BEM on the sphere test case).

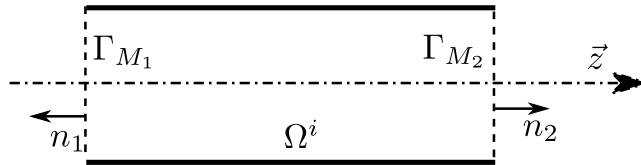


Figure 5: Geometry of the modal test case.

Mean edge	20 mm ( $\lambda/8$ )	16 mm ( $\lambda/10$ )	11m m ( $\lambda/15$ )	8 mm ( $\lambda/20$ )
BEM only, FMM	$9.6 \times 10^{-3}$	$3.1 \times 10^{-3}$	$1.2 \times 10^{-3}$	$2.4 \times 10^{-4}$
FEM-BEM, FMM	0.28	0.19	0.08	$4.6 \times 10^{-2}$
FEM only, iterative	0.55	0.36	0.16	0.09

Table 1: Relative error on the transmission coefficient for the mode (0,1).

As expected, due to finite element dispersion, the mesh must be finer in the FEM part than in the BEM part to have an acceptable error. Moreover the error obtained here by the FEM on the transmission coefficient has a linear dependency on the length of the FEM domain and a square dependency on the size of the elements.

### 5.3 Modal test case with a uniform flow

Consider the previous modal test case with an uniform flow in the direction of the duct, with a Mach number of 0.6. The frequency of the source is chosen such that the mean number of elements per wavelength after the Prandtl–Glauert transformation remains the same as the previous configuration meshes (without flow) of Section 5.2. We recall that the Prandtl–Glauert transformation consists in a space dilatation (9) and a frequency change (23). The frequency is then 1305 Hz.

The results on the transmission coefficient for the modes  $(0, 1)$  are compared with their theoretical values. The coefficients for both a propagation with the flow (emission on  $\Gamma_{M_1}$ ) and against the flow (emission on  $\Gamma_{M_2}$ ) are considered. A computation has also been added to the previous tested configurations. It consists in the case of the full FEM model without any flow in the exterior external domain ( $M_\infty = 0$ ). The results are presented on Table 2.

*Propagation with the flow (emission on modal surface  $\Gamma_{M_1}$ , reception on  $\Gamma_{M_2}$ )*

Mean edge		20 mm ( $\lambda'/8$ )	16 mm ( $\lambda'/10$ )	11 mm ( $\lambda'/15$ )	8 mm ( $\lambda'/20$ )
BEM only, FMM	$M_M = M_\infty = 0.6$	$1.2 \times 10^{-2}$	$4.2 \times 10^{-3}$	$1.6 \times 10^{-3}$	$5.5 \times 10^{-4}$
FEM-BEM, FMM	$M_M = M_\infty = 0.6$	0.31	0.21	0.09	0.05
FEM only, iterative	$M_M = M_\infty = 0.6$	0.61	0.40	0.17	0.10
FEM only, iterative	$M_M = 0.6, M_\infty = 0$	0.0163	0.010	0.0045	$2.5 \times 10^{-3}$

*Propagation against the flow (emission on modal surface  $\Gamma_{M_2}$ , reception on  $\Gamma_{M_1}$ )*

Mean edge		20 mm ( $\lambda'/8$ )	16 mm ( $\lambda'/10$ )	11 mm ( $\lambda'/15$ )	8 mm ( $\lambda'/20$ )
BEM only, FMM	$M_M = M_\infty = 0.6$	$1.2 \times 10^{-2}$	$4.2 \times 10^{-3}$	$1.6 \times 10^{-3}$	$5.6 \times 10^{-4}$
FEM-BEM, FMM	$M_M = M_\infty = 0.6$	0.31	0.21	0.09	0.05
FEM only, iterative	$M_M = M_\infty = 0.6$	0.61	0.40	0.17	0.10
FEM only, iterative	$M_M = 0.6, M_\infty = 0$	2.00	1.60	0.48	0.02

Table 2: Relative error on the transmission coefficient for the mode  $(0, 1)$ ,  $M_M = 0.6$

We can see in the first three lines of each array of Table 2 that the errors are very similar to the previous case without flow. The small differences are due to the fact that even if the size of mesh is adapted to the Prandtl–Glauert transformation, the mesh is slightly distorted by the transformation (the dilatation factor in the direction of the flow is 1.25). Moreover, with the Prandtl–Glauert transformation the error is identical whether the mode propagates with or against the flow. As expected, if the flow outside the duct is zero (fourth line of the arrays of Table 2), the accuracy is different whether the wave propagates with or against the flow inside the duct (with respectively large or small equivalent wavelengths). Then if the potential flow is close to the flow at infinity, by using the Prandtl–Glauert transformation, a better control on the mesh size and the accuracy can be obtained.

## 5.4 Toward engineering applications

### 5.4.1 Rigid sphere into a potential flow

The next test case is the case of a rigid sphere of radius  $R_s = 0.6$  m in a flow. The acoustic source consists of a potential monopole at a frequency of 1133 Hz and a distance of 1.2 m from the surface of the sphere, defined by

$$\varphi^{\text{inc}} = \frac{e^{ikr}}{4\pi r}. \quad (49)$$

We consider two configurations:

1. a uniform flow defined by  $\mathbf{M}_\infty = 0.4\mathbf{e}_z$ . There is no interior domain  $\Omega^i$ , and the boundary conditions at  $\Gamma$  are clearly violated,
2. a incompressible analytic potential flow around the sphere (Equation (50) for  $r < R_\infty$ ) combined with an uniform flow far from the sphere ( $\mathbf{M}_\infty = 0.4\mathbf{e}_z$  for  $r \geq R_\infty$ ) with a supposed continuity of the flow at the interface. For that we choose  $R_\infty = 2R_s = 1.2$  m (Figure 6).

In spherical coordinates, the potential flow in  $\Omega^i$  in spherical coordinates is such that

$$\mathbf{M}_0(r, \theta, \phi) = M_\infty \cos(\theta) \left[ 1 - \left( \frac{R_s}{r} \right)^3 \right] \mathbf{e}_r - M_\infty \sin(\theta) \left[ 1 + \frac{1}{2} \left( \frac{R_s}{r} \right)^3 \right] \mathbf{e}_\theta. \quad (50)$$

The flow is then tangent to  $\Gamma$ , but the continuity condition of the flow through  $\Gamma_\infty$  is not strictly obtained for a finite value of  $R_\infty$ .

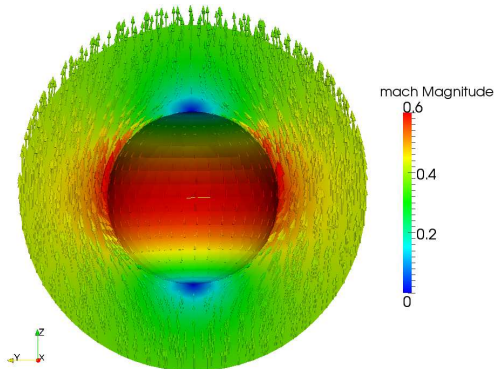


Figure 6: Analytic flow computed around the sphere.

A mesh with an average edge length of 25 mm is used. That represents  $6.7 \times 10^5$  degrees of freedom in the volume and  $10^5$  on the surface. The computation took 7 h on 60 processors for the direct solver and 2 h on 24 processors and 568 iterations for the FMM solver for an achieved residual of  $10^{-6}$ .

Figure 7 illustrates that the presence of the potential flow around the sphere has modified the acoustic potential map. Local acoustic velocity and pressure magnitude have increased, as well as its magnitude in the shadow zone. This is also visible on Figure 8, that shows some radiation patterns for the total pressure on a circle of radius 10 m for 3 positions of the emitter ( $(0., 0., 1.8)$ ,  $(0., 0., -1.8)$  and  $(-1.8, 0., 0)$  respectively). Figure 7 shows that first the radiation pattern is modified by the hypothesis on the flow, and second that this modification is different whether the acoustic waves propagate with or against the flow, with respectively lower and higher level of pressure for the potential model in the shadow region.

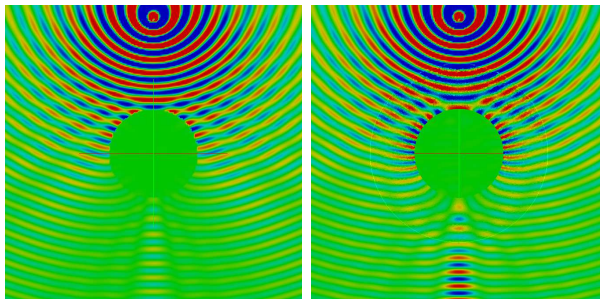


Figure 7: Rigid sphere: real part of the total acoustic pressure for an emitter located at  $(0., 0., 1.8)$  (*left*: uniform flow BEM, *right*: potential flow FEM-BEM).

#### 5.4.2 Simplified engine

The next test case is more realistic. It consists of a simplified engine with modal surfaces orthogonal to  $\mathbf{e}_z$  to model the upstream and downstream fans (see Figure 9). The far field flow is defined by



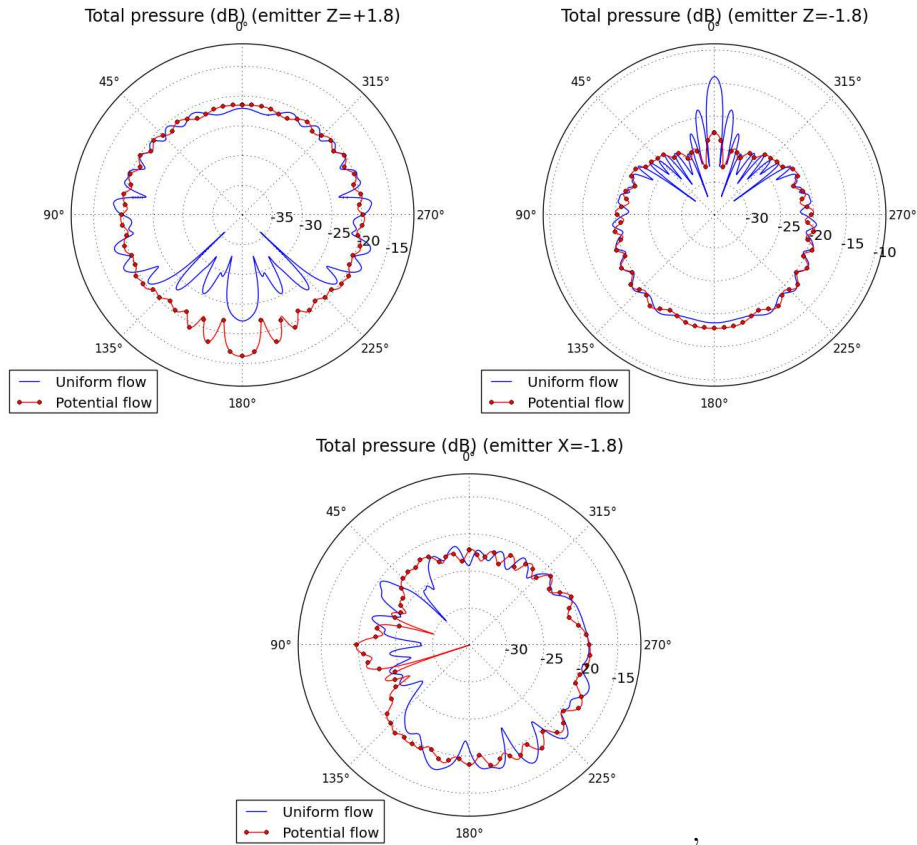


Figure 8: Rigid sphere: acoustic total pressure in dB radiated on a circle at  $r = 10$  m for different positions of the emitter .

$M_\infty = -0.3e_z$ . Three different configurations are considered: a uniform flow defined by  $M_\infty$  and potential flows computed such that the Mach number at the upstream modal surface  $\Gamma_M$  is 0.3 and 0.42.

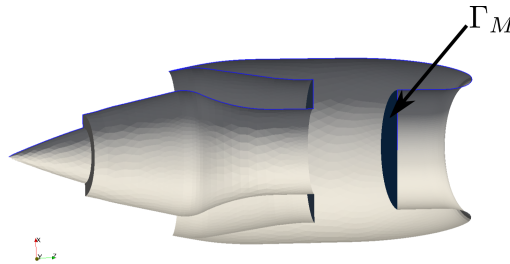


Figure 9: Geometry of the simplified engine.

First, the potential flow is computed using an in-house software based on a fixed-point algorithm [31, 21]. The potential flow obtained when  $M_M = 0.42$  at the upstream modal surface is plotted on Figure 10.

We now consider the upstream fan modal source model at the frequency of 200 Hz. The mean size of the mesh elements is 83 mm. The model contains  $1.2 \times 10^6$  dofs and  $11.8 \times 10^6$  tetrahedrons. At this frequency and for this flow, there are three to four propagating modes. To be compared, the intensity on each mode is set to 100 dB, following Morfey's convention [28].

The pressure obtained in the vicinity of the modal surface is shown on Figures 11 and 12. For each mode, the top part of the Figure is the pressure obtained with the uniform flow model and the bottom part of the Figure the pressure obtained with the potential model with a Mach number at the modal surface of 0.3 or 0.42. Small variations are observed with the  $M_M = 0.3$  condition. The

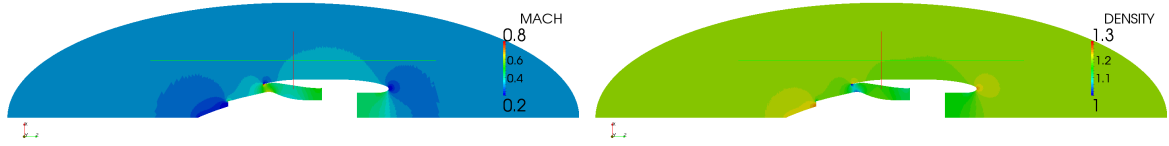


Figure 10: Simplified engine: computed potential flow such that  $M_M = 0.42$  and  $M_\infty = 0.3$  (*left*: Mach number, *right*: density).

differences are higher when the flow at the modal surface is higher.

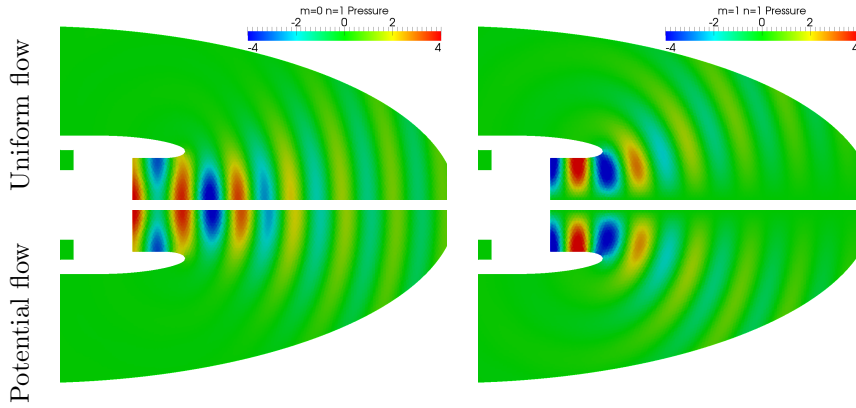


Figure 11: Simplified engine: comparison of the pressure for the uniform model and the potential model with  $M_\infty = M_M = 0.3$ .

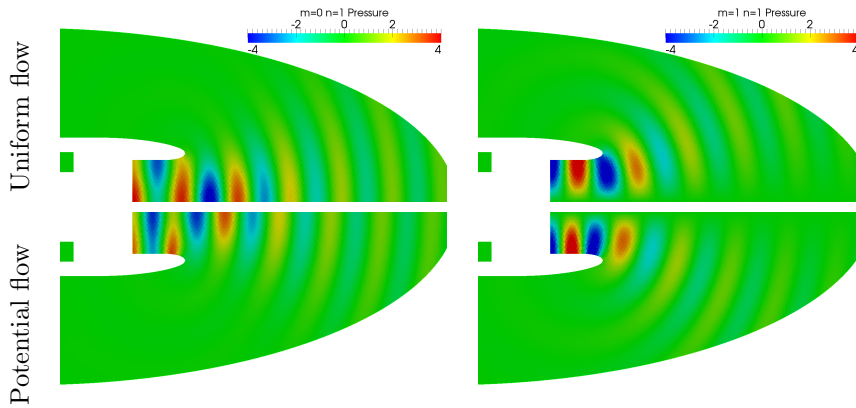


Figure 12: Simplified engine: comparison of the pressure for the uniform model ( $M_\infty = M_M = 0.3$ ) and the potential model ( $M_\infty = 0.3$  and  $M_M = 0.42$ ).

Figure 13 shows the pressure in dB obtained on a circle at a distance of 20 m from the center of the modal surface, for different values of  $M_M$ . Significant change in the amplitude are obtained for the different modes by taking into account the potential flow. For instance for the mode (1, 1) and for the same flow at the modal surface, the amplitude predicted for the potential flow is approximately 1 dB lower in the axis direction than the amplitude predicted by the uniform flow model. By increasing the flow through the upstream modal surface, the difference with the uniform flow model is higher and observed for all the radiation directions.

Figure 14 illustrates the influence of the relative residual of the iterative solver on the diffracted pressure field. Results for relative residuals of  $10^{-3}$  and  $10^{-6}$ , and with or without a Schur complement on the volume part of the matrix are presented. From these results, it appears that a convergence with a tolerance of  $10^{-3}$  is not sufficient for a solution without a Schur complement on the volume part of the matrix.

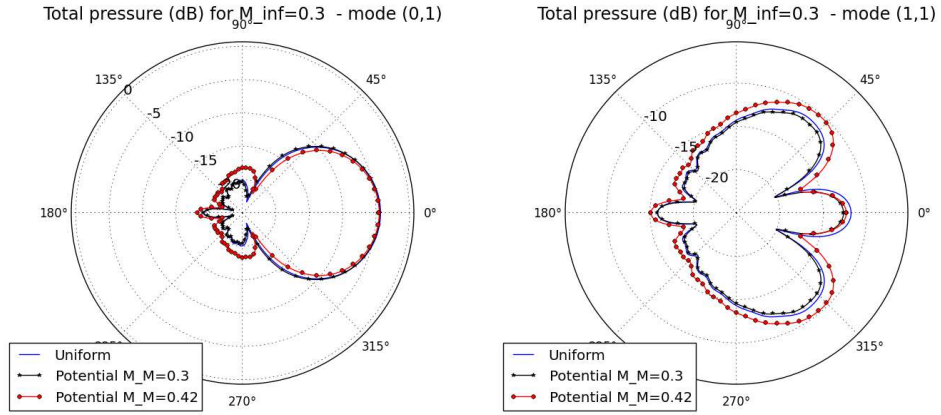


Figure 13: Simplified engine: pressure in dB on a circle at  $r = 20$  m for  $M_{\infty} = 0.3$  and some values of  $M_M$  (mesh size 75mm).

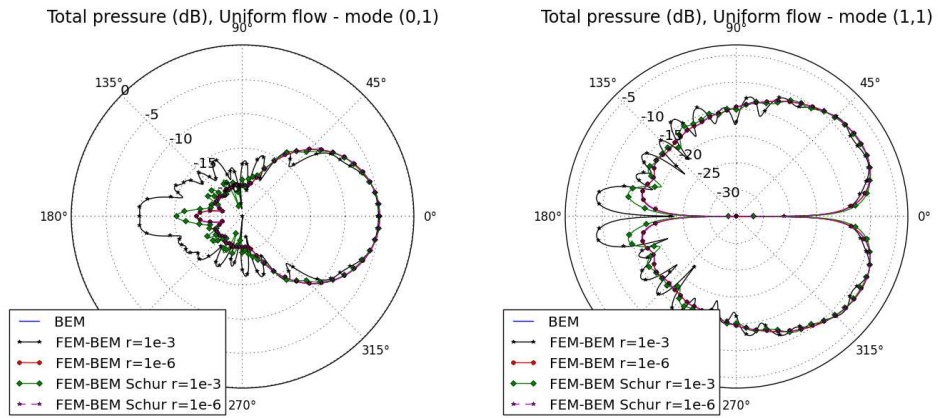


Figure 14: Simplified engine: influence of the convergence criteria and on the pressure in dB on a circle at  $r = 20$  m for a uniform flow defined by  $M_M = M_{\infty} = 0.1$ .

In that case, for a mesh containing  $4.7 \times 10^6$  dofs and  $25.8 \times 10^6$  tetrahedrons, the computation took 1.5 h on 160 processors and 231 iterations for the FMM solver without using the Schur complement and 6.5 h on 120 processors and 204 iterations with for an achieved residual of  $10^{-6}$ .

## 6 Conclusion

In this work, we derived a direct coupling method to compute the acoustic propagation of the noise generated by a turboreactor in a flow that is potential in a bounded domain containing the object, and uniform elsewhere. This approach, that decouples the movement of the fluid and the acoustic effect, and uses a simplified model for the flow, enabled noticeable improvements.

Mathematical justification of the well posedness of the continuous and discretized formulations can be found in [15]. In particular, the used formulation is not invertible at some frequencies of the source. These resonant frequencies are not physical, since the considered boundary value problem always has a unique solution. A combined field integral equations method can be derived to recover well-posedness at all the frequencies. Such a method has been implemented in our code [15].

The method has been implemented for generic 3D configurations. Complementary tests have to be conducted to catch the limitation of the potential assumption. However, now that the coupling has been carried out, and considering that the uniform flow assumption is reasonable far from the object, we can easily enrich the physics of the problem by considering more complex flows in the interior domain (e.g. rotational flow leading to the Galbrun equation [10]), or other boundary condition.

## A Appendix

### A.1 Alternative computation of the coupling integral term $I_M$ (8)

In the same fashion as the exterior problem, it is possible to transform the modal problem (31) to recover the classical Helmholtz equation by introducing a Prandtl–Glauert transformation associated to  $\mathbf{M}_M$  (this is the case in ACTIPOLE).

**Remark A.1.** *In what follows, we note by  $\widetilde{\cdot}^M$  the objects and operators transformed by the Prandtl–Glauert transformation associated to  $\mathbf{M}_M$  (normals, geometry, derivatives).*

The waveguide is still supposed oriented along a local axis  $\mathbf{e}_{z_M}$  and as  $\Gamma_M$  is orthogonal to  $\mathbf{e}_{z_M}$ , we suppose  $\widetilde{z_M|_{\Gamma_M}}^M = 0$ . Moreover the flow  $\mathbf{M}_M$  is then parallel to  $\mathbf{e}_{z_M}$ .

In  $\widetilde{\Omega}_M^M$ , the transformed acoustic potential is decomposed into an incident and a diffracted potential:  $\widetilde{\varphi}^M := \widetilde{\varphi}^{\text{inc}} + \widetilde{\varphi}^{\text{diff}}$ , both satisfying

$$\widetilde{\Delta}^M \widetilde{\varphi}^{\text{inc,diff}} + k_M^2 \widetilde{\varphi}^{\text{inc,diff}} = 0, \quad \text{in } \widetilde{\Omega}_M^M. \quad (51)$$

The incident potential is known, whereas the diffracted potential is unknown. The following decompositions hold [29, 12]:

$$\begin{aligned} \widetilde{\varphi}^{\text{inc}}(\widetilde{x}^M, \widetilde{y}^M, \widetilde{z}^M) &= \sum_{(m \times n) \in \mathbb{Z} \times \mathbb{N}} \widetilde{\alpha}_{mn}^M \widetilde{v}_{mn}^M(\widetilde{x}^M, \widetilde{y}^M) \exp\left(i \widetilde{k}_{mn}^+ \widetilde{z}^M\right) \quad \text{in } \widetilde{\Omega}_M^M, \\ \widetilde{\varphi}^{\text{diff}}(\widetilde{x}^M, \widetilde{y}^M, \widetilde{z}^M) &= \sum_{(m \times n) \in \mathbb{Z} \times \mathbb{N}} \widetilde{\beta}_{mn}^M \widetilde{v}_{mn}^M(\widetilde{x}^M, \widetilde{y}^M) \exp\left(i \widetilde{k}_{mn}^- \widetilde{z}^M\right) \quad \text{in } \widetilde{\Omega}_M^M, \end{aligned} \quad (52)$$

where  $\widetilde{\alpha}_{mn}^M$  and  $\widetilde{\beta}_{mn}^M$  are the incident and diffracted modal coefficients. The basis functions  $\widetilde{v}_{mn}^M$  constitute an orthonormal modal basis function. For a cylindrical duct of radius  $R$ , the functions  $\widetilde{v}_{mn}^M$  are defined in polar coordinates by [29, 12] and for  $n > 0$  by

$$\widetilde{v}_{m,n}^M(\widetilde{r}^M, \widetilde{\theta}^M, \widetilde{z}^M) = J_m\left(\frac{r_{m,n}}{R} \widetilde{r}^M\right) \exp\left(i m \widetilde{\theta}^M\right), \quad (53)$$

with  $r_{m,n}$  the  $n$ -th zero of the derivative of  $m$ -th Bessel function of the first kind  $J_m$  and

$$\widetilde{k}_{mn}^{\pm M} = \pm \sqrt{\left(\widetilde{k}_M^M\right)^2 - \left(\frac{r_{m,n}}{R}\right)^2}, \quad \text{for propagating modes } (\widetilde{k}_{mn}^{\pm M} \in \mathbb{R}), \quad (54)$$

$$\widetilde{k}_{mn}^{\pm M} = \pm i \sqrt{\left(\frac{r_{m,n}}{R}\right)^2 - \left(\widetilde{k}_M^M\right)^2}, \quad \text{for evanescent modes } (\widetilde{k}_{mn}^{\pm M} \in \mathbb{C}). \quad (55)$$

Based on this decomposition, the expression of the Dirichlet-to-Neumann  $\widetilde{\Lambda}_M^M$  operator is [11, 26]:

$$\widetilde{\nabla}^M \overline{\widetilde{\varphi}^M} \cdot \widetilde{\mathbf{n}}^M = \widetilde{\Lambda}_M^M \left(\widetilde{\varphi}^M\right) := \sum_{(m \times n) \in \mathbb{Z} \times \mathbb{N}} \left( \overline{\widetilde{\alpha}_{mn}^M} \widetilde{Y}_{mn}^+ + \widetilde{\beta}_{mn}^M \overline{\widetilde{Y}_{mn}^-} \right) v_{mn} \quad \text{on } \widetilde{\Gamma}_M^M, \quad (56)$$

with  $\widetilde{Y}_{mn}^{\pm M} = -ik_{mn}^{\pm M}$ . Similarly to Section 3.3, by using the Prandtl–Glauert transformation associated to  $\mathbf{M}_M$ , we infer

$$I_M(\varphi^i, \varphi^t) = -J_M \frac{\rho_M}{\rho_\infty} \int_{\widetilde{\Gamma}_M^M} \widetilde{\nabla}^M \overline{\widetilde{\varphi}^i} \cdot \widetilde{\mathbf{n}}^M \widetilde{\varphi}^{Mt} \quad (57)$$

$$= -J_M \frac{\rho_M}{\rho_\infty} \int_{\widetilde{\Gamma}_M^M} \overline{\widetilde{\Lambda}_M^M \left(\widetilde{\varphi}^i\right)} \widetilde{\varphi}^{Mt}. \quad (58)$$

Then, using the Dirichlet-to-Neumann operator (56), we obtain

$$I_M(\varphi^i, \varphi^t) = -J_M \frac{\rho_M}{\rho_\infty} \sum_{(m \times n)} \left[ \overline{\widetilde{\alpha}_{mn}^M} \widetilde{Y}_{mn}^+ + \widetilde{\beta}_{mn}^M \overline{\widetilde{Y}_{mn}^-} \right] \int_{\widetilde{\Gamma}_M^M} \overline{v_{mn}} \widetilde{\varphi}^{Mt}. \quad (59)$$

However, to carry out a coupling between unknown functions written in the same variables, the integral  $I_M$  must be expressed in terms of quantities transformed by the Prandtl–Glauert transformation associated to  $\mathbf{M}_\infty$ . Using the results obtained in Section 3.3, we have that

$$J_M \int_{\widetilde{\Gamma}_M^M} \overline{\widetilde{g}^M(\widetilde{\mathbf{x}}^M)} \widetilde{h}^M(\widetilde{\mathbf{x}}^M) = \int_{\Gamma_M} \frac{1}{\widetilde{K}_M^M(\mathbf{x})} \overline{\widetilde{g}(\mathbf{x})} h(\mathbf{x}) = \int_{\widetilde{\Gamma}_M^\infty} \frac{J_\infty \widetilde{K}_\infty^\infty(\widetilde{\mathbf{x}}^\infty)}{\widetilde{K}_M^M(\widetilde{\mathbf{x}}^\infty)} \overline{\widetilde{g}^\infty(\widetilde{\mathbf{x}}^\infty)} \widetilde{h}^\infty(\widetilde{\mathbf{x}}^\infty),$$

where  $\widetilde{K}_M^M$  and  $\widetilde{K}_\infty^\infty$  are defined in equation (17).

Equation (59) becomes

$$I_M(\varphi^i, \varphi^t) = -J_\infty \frac{\rho_M}{\rho_\infty} \sum_{(m \times n)} \left[ \overline{\widetilde{\alpha}_{mn}^M} \widetilde{Y}_{mn}^+ + \widetilde{\beta}_{mn}^M \overline{\widetilde{Y}_{mn}^-} \right] \int_{\widetilde{\Gamma}_M^\infty} \frac{\widetilde{K}_\infty^\infty(\widetilde{\mathbf{x}}^\infty)}{\widetilde{K}_M^M(\widetilde{\mathbf{x}}^\infty)} \overline{v_{mn}^\infty} \widetilde{\varphi}^{\infty t}. \quad (60)$$

If  $\mathbf{M}_M$  and  $\mathbf{M}_\infty$  are colinear, there holds

$$\frac{\widetilde{K}_\infty^\infty}{\widetilde{K}_M^M} = \sqrt{\frac{1 - M_M^2}{1 - M_\infty^2}},$$

and otherwise, denoting  $\alpha = \mathbf{M}_\infty \cdot \widetilde{\mathbf{n}}_M^\infty$ ,

$$\frac{\widetilde{K}_\infty^\infty}{\widetilde{K}_M^M} = \sqrt{\left[ (1 + C_\infty \alpha^2) (1 + \widetilde{C}_M^M M_M^2) \right]^2 + C_\infty^2 \alpha^2 (M_\infty^2 - \alpha^2)}.$$

## Acknowledgments

This work takes part in the AEROSON project, financed by the ANR (French National Research Agency). The authors would like to express their gratitude to Toufic Abboud (IMACS), Patrick Joly (INRIA) and Guillaume Sylvand (Airbus Group) for fruitful discussions and to Emilie Peynaud and François Madiot for their work during their internship at Airbus Group.

## References

- [1] S. Abarbanel, D. Gottlieb, and J. S. Hesthaven. Well-posed perfectly matched layers for advective acoustics. *J. Comput. Phys.*, 154:266–283, 1999.
- [2] T. Abboud, P. Joly, J. Rodríguez, and I. Terrasse. Coupling discontinuous Galerkin methods and retarded potentials for transient wave propagation on unbounded domains. *Journal of Computational Physics*, 230:5877–5907, 2011.
- [3] P. R. Amestoy, I. S. Duff, J. Koster, and J.-Y. L’Excellent. A fully asynchronous multifrontal solver using distributed dynamic scheduling. *SIAM Journal on Matrix Analysis and Applications*, 23(1):15–41, 2001.
- [4] P. R. Amestoy, A. Guermouche, J.-Y. L’Excellent, and S. Pralet. Hybrid scheduling for the parallel solution of linear systems. *Parallel Computing*, 32(2):136–156, 2006.
- [5] R. Amiet and W. R. Sears. The aerodynamic noise of small-perturbation subsonic flows. *Journal of Fluid Mechanics*, 44:pp. 227–235, 1970.
- [6] R.J. Astley and J.G. Bain. A three-dimensional boundary element scheme for acoustic radiation in low mach number flows. *Journal of Sound and Vibration*, 109(3):445 – 465, 1986.
- [7] M. Beldi and F. S. Monastir. Resolution of the convected Helmholtz’s equation by integral equations. *Acoustical Society of America Journal*, 103:2972, 1998.
- [8] J.P. Bérenger. A perfectly matched layer for the absorption of electromagnetic waves. *J. Comput. Phys.*, 114:185–200, 1994.
- [9] J. Bielak and R. C. Mac Camy. Symmetric Finite Element and Boundary Integral Coupling Methods for Fluid-Solid Interaction. *Quarterly of Applied Mathematics*, 49:107–119, 1991.
- [10] A.-S. Bonnet-Ben Dhia, J.-F. Mercier, F. Millot, S. Pernet, and E. Peynaud. Time-Harmonic Acoustic Scattering in a Complex Flow: a Full Coupling Between Acoustics and Hydrodynamics. *Comm. Comput Phys*, 11(2):555–572, 2012.
- [11] A. S. Bonnet-Bendhia, L. Dahi, E. Luneville, and V. Pagneux. Acoustic diffraction by a plate in a uniform flow. *Mathematical Models and Methods in Applied Sciences*, 12(05):625–647, 2002.
- [12] M. Bruneau and T. Scelo. *Fundamentals of Acoustics*. ISTE, 2006.
- [13] A. J. Burton and G. F. Miller. The application of integral equation methods to the numerical solution of some exterior boundary-value problems. *Proceedings of the Royal Society of London. A. Mathematical and Physical Sciences*, 323(1553):201–210, 1971.
- [14] B. Carpentieri, I. S. Duff, L. Giraud, and G. Sylvand. Combining fast multipole techniques and an approximate inverse preconditioner for large electromagnetism calculations. *SIAM J. Sci. Comput.*, 27:774–792, 2005.
- [15] F. Casenave, A. Ern, and G. Sylvand. Coupled BEM-FEM for the convected Helmholtz equation with non-uniform flow in a bounded domain. *Journal of Computational Physics*, 257, Part A(0):627–644, 2014.

- [16] P. G. Ciarlet. *The Finite Element Method for Elliptic Problems*. North Holland, Amsterdam, 1978.
- [17] M. Costabel. *Symmetric methods for the coupling of finite elements and boundary elements*. Preprint. Fachbereich Mathematik. Technische Hochschule Darmstadt. Fachber., TH, 1987.
- [18] A. Craggs. An acoustic finite element approach for studying boundary flexibility and sound transmission between irregular enclosures. *Journal of Sound and Vibration*, 30:343–357, 1973.
- [19] A. Delnevo. Code ACTI3S, Justifications Mathématiques : partie II, présence d’un écoulement uniforme. Technical report, EADS CCR, 2002.
- [20] F. Dubois, E. Duceau, F. Maréchal, and I. Terrasse. Lorentz transform and staggered finite differences for advective acoustics. Technical report, EADS and arXiv:1105.1458, 2002.
- [21] S. Duprey. *Analyse Mathématique et Numérique du Rayonnement Acoustique des Turboréacteurs*. PhD thesis, EADS-CRC ; Institut Elie Cartan-Université Poincaré Nancy, 2005.
- [22] L. Giraud, J. Langou, and G. Sylvand. On the parallel solution of large industrial wave propagation problems,. *J. Comput. Acoust.*, 14:83–111, 2006.
- [23] H. Glauert. The effect of compressibility on the lift of an aerofoil. *Proceedings of the Royal Society of London. Series A, Containing Papers of a Mathematical and Physical Character*, 118(779):pp. 113–119, 1928.
- [24] F. H. Harlow, J. E. Welch, J. P. Shannon, and B. J. Daly. The MAC method. Technical report, Los Alamos Scientific Laboratory, march 1966.
- [25] C. Johnson and J. C. Nédélec. On the coupling of boundary integral and finite element methods. *Mathematics of Computation*, 35(152):1063–1079, 1980.
- [26] G. Legendre. *Rayonnement acoustique dans un fluide en écoulement : analyse mathématique et numérique de l’équation de Galbrun*. These, ENSTA ParisTech, September 2003.
- [27] V. Levillain. *Couplage éléments finis-équations intégrales pour la résolution des équations de Maxwell en milieu hétérogène*. PhD thesis, Thèse École Polytechnique, 1991.
- [28] C.L. Morfey. Acoustic energy in non-uniform flows. *Journal of Sound and Vibration*, 14(2):159 – 170, 1971.
- [29] P. M. Morse and K. Ingard. *Theoretical acoustics*. McGraw-Hill Book Co., 1968.
- [30] J.C. Nédélec. *Acoustic and Electromagnetic Equations: Integral Representations for Harmonic Problems*, volume 144 of *Applied Math. Sciences*. Springer, 2001.
- [31] J. Périaux. Three dimensional analysis of compressible potential flows with the finite element method. *International Journal for Numerical Methods in Engineering*, 9(4):775–831, 1975.
- [32] J. W. S. Rayleigh. *The theory of sound*. Macmillan and co, London, 1877.
- [33] V. Rokhlin. Rapid solution of integral equations of classical potential theory. *J. Comput. Phys.*, 60:187–207, 1985.
- [34] A. Hirschberg S. W. Rienstra. *An Introduction to Acoustics*. Eindhoven University of Technology, 2004.
- [35] H. A. Schenck. Improved Integral Formulation for Acoustic Radiation Problems. *J. Acoust. Soc. Am*, 44:41–58, 1968.
- [36] A. Sommerfeld. Die Greensche Funktionen der Schwingungsgleichung. *Jahresber. Deutsch. Math. Verein.*, 21:309–353, 1912.

- [37] G. Sylvand. Code ACTI3S harmonique : Justification Mathématique. Technical report, EADS CCR, 2001.
- [38] A. Taflove. *Computational Electrodynamics: The Finite-Difference Time-Domain Method*. Artech House, Norwood, MA, 1995.
- [39] J. Virieux. PSV-wave propagation in heterogeneous media: velocity-stress finite difference method. *Geophysics*, 51:889–901, 1986.
- [40] M.C.M. Wright. *Lecture Notes On The Mathematics Of Acoustics*. Imperial College Press, 2005.
- [41] F. Zhang. *The Schur Complement and Its Applications*. Numerical Methods and Algorithms. Springer, 2005.
- [42] O. C. Zienkiewicz, D. W. Kelly, and P. Bettess. The coupling of the finite element method and boundary solution procedures. *Int. J. Numer. Meth. Engng.*, 11:355–375, 1977.