



**HAL**  
open science

## **Impact of aeration control on N<sub>2</sub>O emission in a full-scale activated sludge wastewater treatment plant**

A. Filali, Y. Fayolle, P. Peu, L. Philippe, F. Nauleau, Sylvie Gillot

### ► **To cite this version:**

A. Filali, Y. Fayolle, P. Peu, L. Philippe, F. Nauleau, et al.. Impact of aeration control on N<sub>2</sub>O emission in a full-scale activated sludge wastewater treatment plant. IWA/WEF Nutrient Removal and Recovery 2013: Trends in Resource Recovery and Use. NRR2013, Jul 2013, Vancouver, Canada. 5 p. <hal-00941263>

**HAL Id: hal-00941263**

**<https://hal.science/hal-00941263v1>**

Submitted on 3 Feb 2014

**HAL** is a multi-disciplinary open access archive for the deposit and dissemination of scientific research documents, whether they are published or not. The documents may come from teaching and research institutions in France or abroad, or from public or private research centers.

L'archive ouverte pluridisciplinaire **HAL**, est destinée au dépôt et à la diffusion de documents scientifiques de niveau recherche, publiés ou non, émanant des établissements d'enseignement et de recherche français ou étrangers, des laboratoires publics ou privés.



HAL Authorization

## IMPACT OF AERATION CONTROL ON N<sub>2</sub>O EMISSION IN A FULL-SCALE ACTIVATED SLUDGE WASTEWATER TREATMENT PLANT

Ahlem Filali<sup>a</sup>, Yannick Fayolle<sup>a</sup>, Pascal Peu<sup>b</sup>, Lydiane Philippe<sup>c</sup>, Fabrice Nauleau<sup>c</sup>, Sylvie Gillot<sup>a</sup>

<sup>a</sup>Irstea, UR HBAN, 1 Rue Pierre-Gilles de Gennes, CS 10030, F-92761 Antony Cedex, France

<sup>b</sup>Irstea, UR GERE, 17 Avenue de Cucillé, CS 64427, F-35044 Rennes, France

<sup>c</sup>SAUR, 1 rue Antoine Lavoisier, 78064 Saint Quentin en Yvelines, France

<sup>1</sup> Corresponding author: [sylvie.gillot@irstea.fr](mailto:sylvie.gillot@irstea.fr)

**Key words:** nitrous oxide (N<sub>2</sub>O), aeration control, biological nitrogen removal, activated sludge.

### ABSTRACT

This work investigated the impact of aeration control strategy on energy consumption and nitrous oxide (N<sub>2</sub>O) emission in a full-scale wastewater treatment plant. Two identical activated sludge processes treating the same effluent but operated with different aeration control strategies were compared. Aeration tank 1 was operated with a new control strategy favouring the simultaneous nitrification denitrification (SND) whereas aeration tank 2 was operated with a conventional control strategy with distinct nitrification and denitrification phases. Results indicated that whereas the N<sub>2</sub>O emission factor was comparable in both systems (in the order of magnitude of 0.004% of the influent TKN load), N<sub>2</sub>O emission pattern was dependent on the adopted aeration control strategy. It has been observed that high aeration flow rates (aeration tank 2) were likely to promote N<sub>2</sub>O transfer from the gas phase to the liquid phase.

### INTRODUCTION

In conventional wastewater treatment plants (WWTPs) the aeration of the bioreactors is one of the largest energy consumers (Fayolle et al., 2010). In order to optimize oxygen supply, new control systems have recently been proposed, including those based on the continuous monitoring of nitrogen forms (NH<sub>4</sub><sup>+</sup>, NO<sub>3</sub><sup>-</sup>). Such systems regulate the air supply according to nitrogen load to be treated and maintain relatively low dissolved oxygen concentrations in the basins. However, if these new control strategies help to reduce the energy consumption, their impact on nitrous oxide (N<sub>2</sub>O) emissions remains unclear.

In WWTPs the release of N<sub>2</sub>O from biological nitrogen removal processes is well recognized (Wunderlin et al., 2012). It has been identified to be particularly influenced by the DO concentration and rapidly changing oxygenation conditions - i.e. periodical switch between anoxic and oxic conditions (Chandran et al., 2011). It has been observed that a low concentration in the aerated zones may enhance N<sub>2</sub>O production throughout the nitrifier denitrification pathway. At the same time, too high aeration rates in the nitrification tank may lead to an increased oxygen introduction to the denitrification tank and lead to incomplete heterotrophic denitrification with enhanced N<sub>2</sub>O emissions (Ahn et al., 2010, Kampschreur et al., 2009). Within this context, this work aims at comparing N<sub>2</sub>O emission patterns from two activated sludge tanks treating the same effluent and operated with different aeration control strategies. Energy consumption for aeration and performances of each tank were characterized. The influence of process conditions (DO concentration, organic and nitrogen loading rates, liquid/gas mass transfer,...) on N<sub>2</sub>O emission has also been investigated.

## MATERIAL AND METHODS

N<sub>2</sub>O emissions and nitrogen removal efficiencies were investigated in a full-scale domestic wastewater treatment plant (230 000 PE) located in France. The facility consists of two parallel activated sludge lines operated under extended aeration ( $F/M < 0.1$  kg BOD<sub>5</sub>/kg MLVSS/d) and with different aeration control strategies.

Aeration tank 1 is equipped with a new aeration control system (Ammonair®, based on the continuous monitoring of the concentration of NH<sub>4</sub><sup>+</sup> and O<sub>2</sub>) that maintains low dissolved oxygen concentration in the bulk creating favorable conditions for the simultaneous nitrification and denitrification. Aeration tank 2 is equipped with a conventional control system (O<sub>2</sub>/ORP) with distinct nitrification and denitrification phases.

Oxygen transfer was measured using the off-gas method (ASCE, 1996) on different locations of the aerated zone of each tank ( Fig. 1). Gas emissions were collected with a floating chamber technique (Peu et al., 1999) in both aerated and non-aerated zones. The N<sub>2</sub>O concentration was continuously monitored and analyzed, over a 24 h period, in a zone representative of the measured gas/liquid mass transfer parameters (Fig. 1). N<sub>2</sub>O fluxes were correlated with sampling location-specific pH, activated sludge mixed-liquor temperature, DO, COD and N-form concentrations. Removal performances of each tank were evaluated. Influent and effluent composition was accessed using 24-h composite samples and analyzed by standard methods.

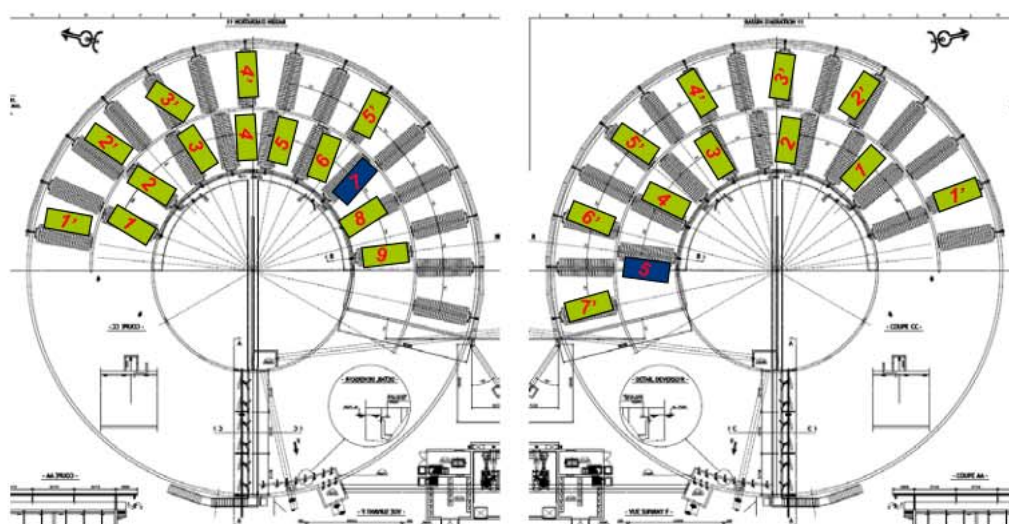


Figure 1. Sampling points for oxygen mass transfer measurement (■) and collectors position for the monitoring of N<sub>2</sub>O emissions (■) in tank 1 (right) and tank 2 (left)

## RESULTS AND DISCUSSION

Both reactors were operated with the same MLSS concentration (4.5 g/L) and showed similar removal performances (not shown). Off-gas N<sub>2</sub>O concentrations in both systems show different patterns depending on the adopted aeration control strategy (Fig. 2). In aeration tank 1 (A), during both aerated and non-aerated phases, N<sub>2</sub>O concentration was almost always higher or equal to the atmospheric concentration (370 ± 30 ppb). A decrease of the off-gas N<sub>2</sub>O concentration below the atmospheric concentration (up to 127 ppb) was observed once (from 6:50 AM to 7:05AM) that is consistent with a sharp increase of the air flow rate to unclog diffusion membranes (from 3000 Nm<sup>3</sup>/h to 14000 Nm<sup>3</sup>/h).

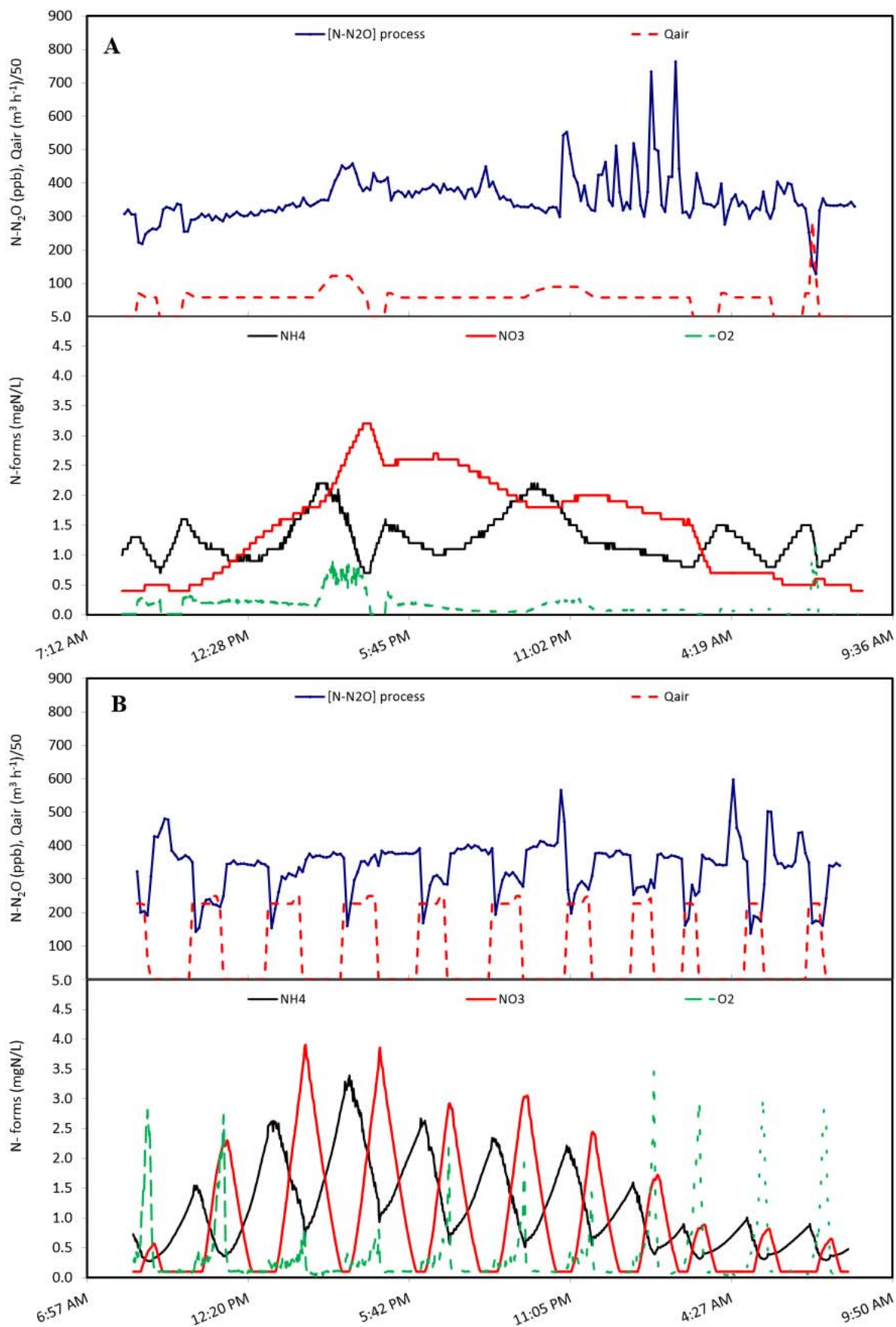


Figure 2. Off-gas N<sub>2</sub>O concentration, air flow and nitrogen forms concentration in tank 1 (A) and tank 2 (B) - aerated zones

In aeration tank 2 (B), a rapid decrease of the N<sub>2</sub>O concentration below the atmospheric concentration (up to 140 ppb) is observed at the beginning of each aerated period. The decrease of the N<sub>2</sub>O concentration is certainly due to mass transfer from the gas phase to the liquid phase enhanced by the high air flow rate in aeration tank 2 (on average 11200 Nm<sup>3</sup>/h). After this decrease, the N<sub>2</sub>O concentration in tank 2 progressively increased up to the atmospheric concentration during both aerated and non-aerated phases.

The N<sub>2</sub>O emission rate was in the order of magnitude of 33 g N-N<sub>2</sub>O/d and 28 g N-N<sub>2</sub>O/d for aeration tank 1 and 2, respectively. The N<sub>2</sub>O emission factor is similar in both aeration tanks: 0.004% of the influent TKN load. This value is in the low range of reported literature values - 0.001 - 4.0% of the influent TKN load - (Foley et al., 2010, Sümer et al., 1995). Considering the amount of N<sub>2</sub>O in the air blown into the aeration tank, a net N<sub>2</sub>O **production** is observed in aeration tank 1 whereas a **consumption** of N<sub>2</sub>O is observed in aeration tank 2. The phenomenon of N<sub>2</sub>O consumption has already been observed in some low-loaded wastewater treatment plants (Foley et al., 2010). However the biological mechanisms of this consumption remains unclear.

Oxygen mass balance performed indicated that the air consumption for biological treatment was significantly different in both basins. Oxygen mass transferred to aeration tank 1 and tank 2 was 17700 kgO<sub>2</sub>/d and 30700 kgO<sub>2</sub>/d, respectively. Energy consumption for the aeration was estimated to be on average 30% greater in aeration tank 2 than in tank 1.

## CONCLUSION

This study investigated performances, energy consumption and N<sub>2</sub>O emissions from two activated sludge tanks treating the same effluent and operated with different aeration control strategies. Preliminary results indicated that although aeration control system was different, N<sub>2</sub>O emission factor was comparable in both systems. Besides, it has been observed that high aeration flow rates (aeration tank 2) were likely to enhance N<sub>2</sub>O transfer from the gas phase to the liquid phase at the beginning of the aeration phases. The comparison of aerated tanks on their energy consumption indicates that with Ammonair® control, energy consumption for aeration was reduced by about 30%. Further work has to be carried out to better understand the relationship between the observed N<sub>2</sub>O emissions, gas transfer and the biological mechanisms of the production and/or consumption of N<sub>2</sub>O.

## REFERENCES

- AHN, J. H., KIM, S., PARK, H., RAHM, B., PAGILLA, K. & CHANDRAN, K. 2010. N<sub>2</sub>O Emissions from Activated Sludge Processes, 2008-2009: Results of a National Monitoring Survey in the United States. *Environmental Science & Technology*, 44, 4505-4511.
- ASCE 1996. Standard Guidelines for In-Process Oxygen Transfer Testing. New York, USA.
- CHANDRAN, K., STEIN, L. Y., KLOTZ, M. G. & VAN LOOSDRECHT, M. C. M. 2011. Nitrous oxide production by lithotrophic ammonia-oxidizing bacteria and implications for engineered nitrogen-removal systems. *Biochemical Society Transactions*, 39, 1832-1837.
- FAYOLLE, Y., GILLOT, S., COCKX, A., BENSIMHON, L., ROUSTAN, M. & HEDUIT, A. 2010. In situ characterization of local hydrodynamic parameters in closed-loop aeration tanks. *Chemical Engineering Journal*, 158, 207-212.

- FOLEY, J., DE HAAS, D., YUAN, Z. & LANT, P. 2010. Nitrous oxide generation in full-scale biological nutrient removal wastewater treatment plants. *Water Research*, 44, 831-844.
- KAMPSCHREUR, M. J., TEMMINK, H., KLEEREBEZEM, R., JETTEN, M. S. M. & VAN LOOSDRECHT, M. C. M. 2009. Nitrous oxide emission during wastewater treatment. *Water Research*, 43, 4093-4103.
- PEU, P., BELINE, F. & MARTINEZ, J. 1999. A floating chamber for estimating nitrous oxide emissions from farm scale treatment units for livestock wastes. *Journal of Agricultural Engineering Research*, 73, 101-104.
- SÜMER, E., WEISKE, A., BENCKISER, G. & OTTOW, J. C. G. 1995. Influence of Environmental-Conditions on the Amount of N<sub>2</sub>o Released from Activated-Sludge in a Domestic Waste-Water Treatment-Plant. *Experientia*, 51, 419-422.
- WUNDERLIN, P., MOHN, J., JOSS, A., EMMENEGGER, L. & SIEGRIST, H. 2012. Mechanisms of N(2)O production in biological wastewater treatment under nitrifying and denitrifying conditions. *Water research*, 46, 1027-37.