

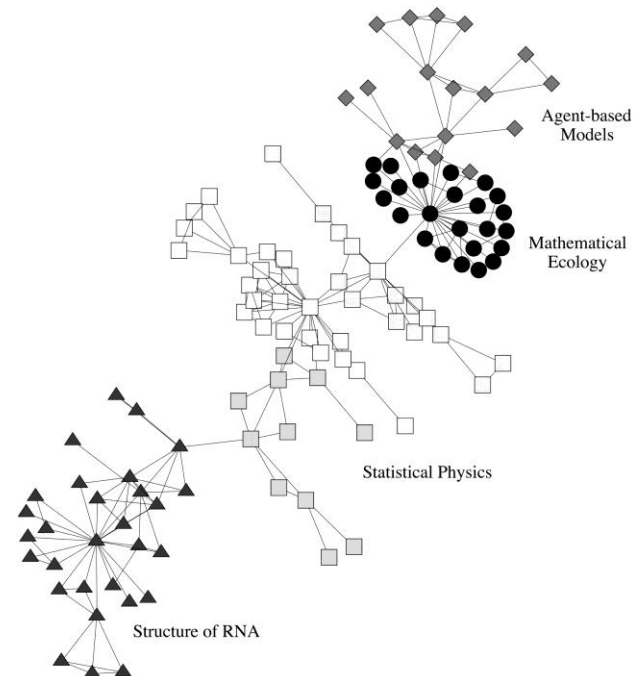
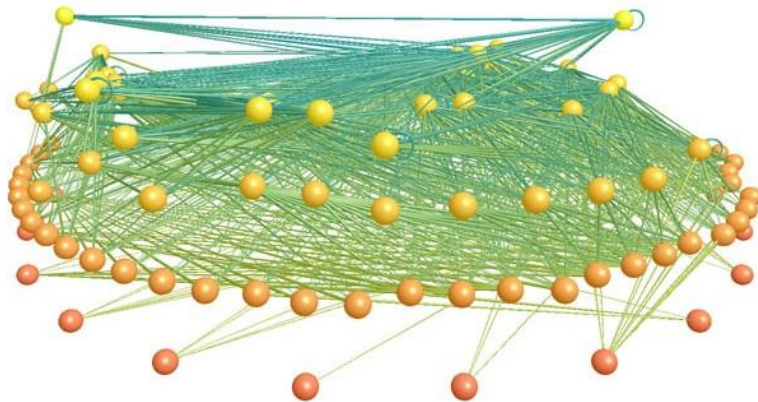
# Complex network classification in terms of their topological properties

Prepared by Burcu Kantarci

Advisor: Dr. Vincent Labatut

# Problem & Plan

1. Complex network
2. Project Purpose
3. Project plan
  - a) Preparation
  - b) Process
  - c) Analyse

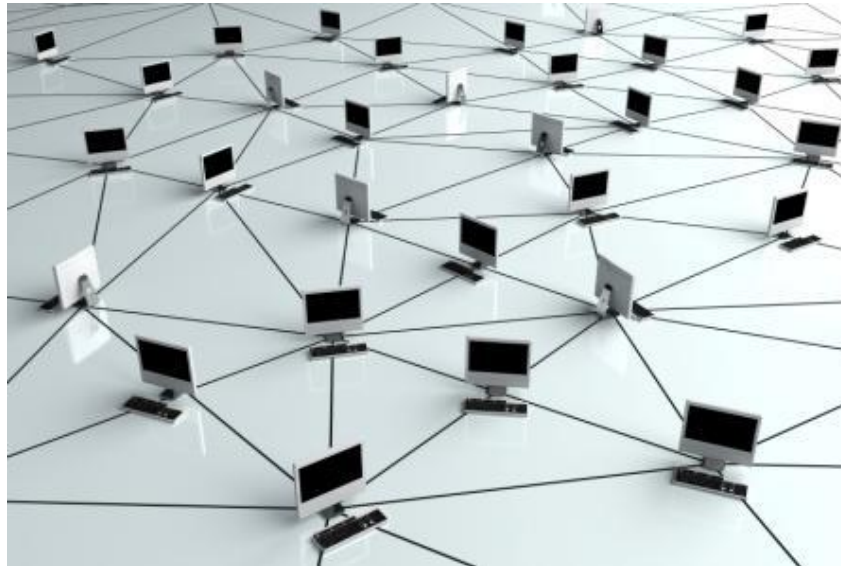


# 1. Complexe network

Object + Relation  $\longrightarrow$  System modeling

Object  $\longleftrightarrow$  Node

Relation  $\longleftrightarrow$  Link



# 1. Complex network

## ***Domains:***

Biology

Phisic

Chimie

Computer science

Engineering

Genetic

Economy

...

## ***Usage reasons***

-graph theory

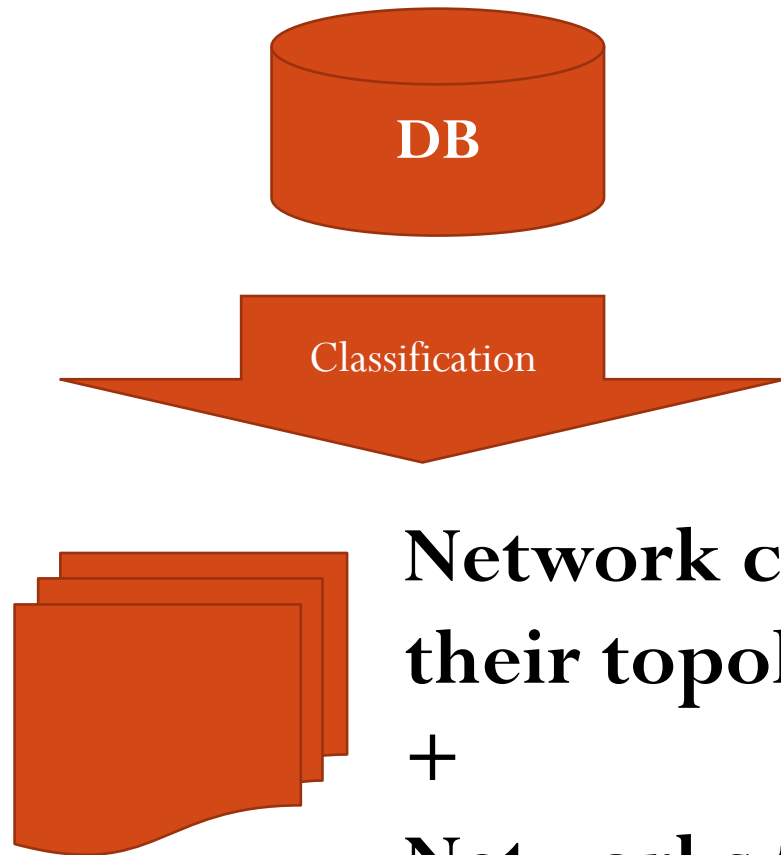
-Mathematical approche

-Statistical approche

-Complexity and high cost

-General information

## 2. Proje amacı

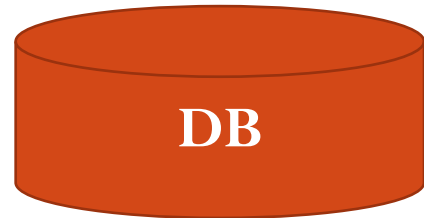
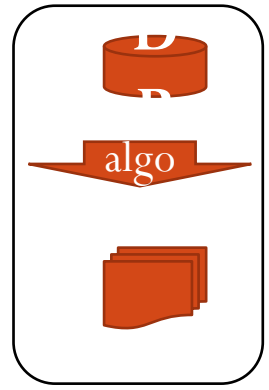


**Network classes in terms of  
their topologic properties**

**+**

**Networks from different  
domains with their domain  
topological properties**

# 2. Proje planı



## a. DB oluşturma

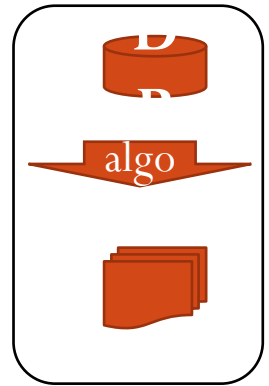
	A	B	C	D	E	F	G	H	I	J	K	L	M	N	O	
1	id	name	n	m	dir	weig	attr	loop	nodes	links	url	comments	main	date added	added by	Biblio
2	0001	Yeast - Protein-protein interacti	2361	7182	bid	N	attr	Y	protei	intera	<a href="http://">http://</a>	protein-protein interaction size is different in the paper	<a href="#">Pajek</a>	27/06/2011	Vincent Labatut	Original: Sun Acids Resea Pajek: Batag
3	0002	Tina - Student Government of th	11	41+48+2	Y	N	N		perso	from/ques to x recal	<a href="http://">http://</a>	6 types discuss sociology, (6 relation t	<a href="#">Pajek</a>	6/28/11	Vincent Labatut	Original: Hlel 1993, 9, 121-Pajek: Batag
4	0003	Football - World Soccer Data 19	35	118	Y	Y	N		count	num	<a href="http://">http://</a>	sport, valued	<a href="#">Pajek</a>	6/28/11	Vincent Labatut	Original: Krei Pajek: Batag
5	0004	Slovene Parliamentary Parties	10	90	Y	Y	N		politic	simil weig [-300	<a href="http://">http://</a>	sociology, valued sign	<a href="#">Pajek</a>	6/29/11	Vincent Labatut	Original #1: Pajek: Batag

## 2. Project plan



### a. Preparation

- i. Finding networks
- ii. Unicity control
- iii. Domain reseach
- iv. Appropriate format
- v. insert

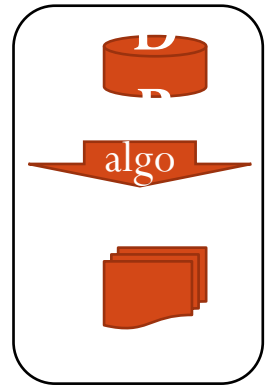


## 2. Proje planı

Sınıflama  
algoritmaları

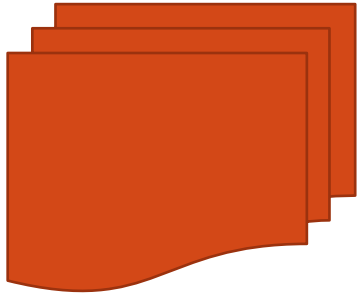
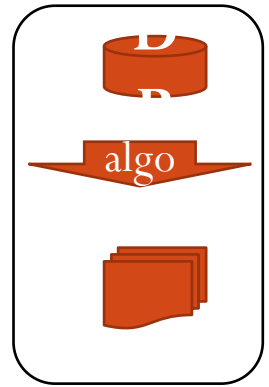
### b. Process

- i. Classification algorithm selection
- ii. Preparing the execution platform
- iii. Running algorithm with data





## 2. Proje planı



### c. Analyse

- i. Classification of the networks and comparison between existing groups in terms of their topological properties

Thank you...