



**HAL**  
open science

## Validation of LS1 model for delamination propagation criterion at $0^\circ$ - $\theta^\circ$ interfaces

Achille Lerpiniere, Jean-François Caron

► **To cite this version:**

Achille Lerpiniere, Jean-François Caron. Validation of LS1 model for delamination propagation criterion at  $0^\circ$ -  $\theta^\circ$  interfaces. 18 e Journées nationales sur les Composites (JNC 18), Jun 2013, Nantes, France. 158 p. hal-00940120

**HAL Id: hal-00940120**

**<https://hal.science/hal-00940120>**

Submitted on 31 Jan 2014

**HAL** is a multi-disciplinary open access archive for the deposit and dissemination of scientific research documents, whether they are published or not. The documents may come from teaching and research institutions in France or abroad, or from public or private research centers.

L'archive ouverte pluridisciplinaire **HAL**, est destinée au dépôt et à la diffusion de documents scientifiques de niveau recherche, publiés ou non, émanant des établissements d'enseignement et de recherche français ou étrangers, des laboratoires publics ou privés.

## Validation du modèle LS1 pour la propagation d'un délaminage aux interfaces $0^\circ/\theta^\circ$

### *Validation of LS1 model for delamination propagation at $0^\circ/\theta^\circ$ interfaces*

Achille Lerpiniere<sup>1</sup>, Jean-François Caron<sup>2</sup>

1 : Université Paris-Est, Laboratoire Navier  
Ecole des Ponts ParisTech, IFSTTAR, CNRS  
6 av Blaise Pascal, 77455 Champs/Marne  
e-mail : achille.lerpiniere@polytechnique.edu

2 : Université Paris-Est, Laboratoire Navier  
Ecole des Ponts ParisTech, IFSTTAR, CNRS  
6 av Blaise Pascal, 77455 Champs/Marne  
e-mail : caron@enpc.fr

The aim of this paper is to propose an efficient and accurate alternative to the computationally expensive three-dimensional finite element method (3D-FEM), for analyzing delaminated multilayered plates under classical loads. Many of the existing models deal with the analysis of multilayered structures only in the non-delaminated state.

The first part of the present study extends the application of a layerwise stress model, called the LS1 model, to delaminated multilayered plates subjected to mode I and/or II loads.

The analytical LS1 solutions are derived for general non-delaminated and delaminated multilayers and compared to 3D finite element solutions along with the results from the 2D-FEM code based on the LS1 (fig. 1). The comparison gives a good agreement between the LS1 and 3D-FE models except near singularities (free edges, crack tips,...).

In order to overcome this drawback, a refinement approach, called the refined LS1 [1], will be shortly presented. The comparison between the refined LS1 and 3D-FE models reveals an excellent agreement, even in the vicinity of singularities, in terms of interlaminar stresses and strain energy release rate.

An interfacial stress based criterion arising from an energy power-law [2] one by using the LS1 model [3] will be proposed. Mode separation will be analytically deduced from the interfacial stresses (tab. 1).

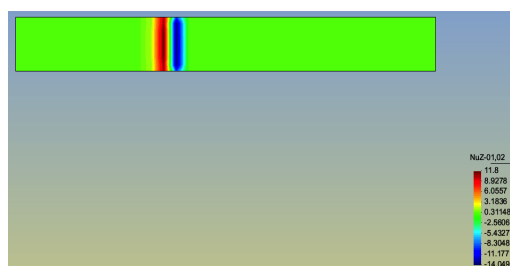


Fig. 1. Interfacial pullout for ADCB18 test specimen (MPa)

---

	a(mm)	85	90	95	100	105
ADCB18	P(N)	34.17	31.93	31.31	29.56	28.73
	$G_I - EXP(J/m^2)$	321	314	337	332	346
	$G_I - FE(J/m^2)$	327	319	340	335	347
	$G_I - 2DFE(J/m^2)$	321	314	335	331	344
	$G_{II} - EXP(J/m^2)$	59	58	62	61.5	64
	$G_{II} - FE(J/m^2)$	46	45	48	47	49
	$G_{II} - 2DFE(J/m^2)$	59	58	62	61.5	64

Tab. 1. Average experimental and finite element values for ADCB18 test specimen

### Références

- [1] N. SAEEDI, K. SAB, J-F. CARON, « Delaminated multilayered plates under uniaxial extension. Part II: Efficient layerwise mesh strategy for the prediction of delamination onset ». *Int. J. of Solids and Structures*, Vol. 49, Issue 26, pp. 3727-3740, 2012.
- [2] M.L. BENZEGGAGH, M. KENANE, « Measurement of mixed-mode delamination fracture toughness of unidirectional glass/epoxy composites with mixed-mode bending apparatus ». *Composites Science and Technology*, Vol. 56, Issue 4, pp. 439-449, 1996.
- [3] J-F. CARON, A. DIAZ DIAZ, R.P. CARREIRA, A. EHLACHER, « Multi-particle modeling for the prediction of delamination in multi-layered materials ». *Composites Science and Technology*, Vol. 66, Issue 6, pp. 755-765, 2006.