



Functional characterization in *Xenopus* oocytes of Na⁺ transport systems from durum wheat reveals diversity among two HKT1;4 transporters.

Siwar Ben Amar, Faïçal Brini, Hervé Sentenac, Khaled Masmoudi,
Anne-Aliénor Véry

► To cite this version:

Siwar Ben Amar, Faïçal Brini, Hervé Sentenac, Khaled Masmoudi, Anne-Aliénor Véry. Functional characterization in *Xenopus* oocytes of Na⁺ transport systems from durum wheat reveals diversity among two HKT1;4 transporters.. *Journal of Experimental Botany*, 2014, 65 (1), pp.213-22. 10.1093/jxb/ert361 . hal-00936768

HAL Id: hal-00936768

<https://hal.science/hal-00936768>

Submitted on 15 Mar 2021

HAL is a multi-disciplinary open access archive for the deposit and dissemination of scientific research documents, whether they are published or not. The documents may come from teaching and research institutions in France or abroad, or from public or private research centers.

L'archive ouverte pluridisciplinaire **HAL**, est destinée au dépôt et à la diffusion de documents scientifiques de niveau recherche, publiés ou non, émanant des établissements d'enseignement et de recherche français ou étrangers, des laboratoires publics ou privés.



Distributed under a Creative Commons Attribution 4.0 International License

RESEARCH PAPER

Functional characterization in *Xenopus* oocytes of Na⁺ transport systems from durum wheat reveals diversity among two HKT1;4 transporters

Siwar Ben Amar^{1,2}, Faiçal Brini¹, Hervé Sentenac², Khaled Masmoudi^{1,*} and Anne-Aliénor Véry^{2,†}

¹ Plant Protection and Improvement Laboratory, Center of Biotechnology of Sfax (CBS)/University of Sfax, B.P. '1177' 3018, Sfax, Tunisia

² Biochimie & Physiologie Moléculaire des Plantes, UMR 5004 CNRS/ 386 INRA/SupAgro Montpellier/Université Montpellier 2, Campus SupAgro-INRA, 34060 Montpellier Cedex 2, France

* Present address: International Center for Biosaline Agriculture (ICBA), P.O. Box 14660, Dubai, United Arab Emirates.

† To whom correspondence should be addressed. E-mail: very@supagro.inra.fr

Received 7 August 2013; Revised 26 September 2013; Accepted 3 October 2013

Abstract

Plant tolerance to salinity constraint involves complex and integrated functions including control of Na⁺ uptake, translocation, and compartmentalization. Several members of the high-affinity K⁺ transporter (HKT) family, which comprises plasma-membrane transporters permeable to K⁺ and Na⁺ or to Na⁺ only, have been shown to play major roles in plant Na⁺ and K⁺ homeostasis. Among them, HKT1;4 has been identified as corresponding to a quantitative trait locus (QTL) of salt tolerance in wheat but was not functionally characterized. Here, we isolated two *HKT1;4*-type cDNAs from a salt-tolerant durum wheat (*Triticum turgidum* L. subsp. *durum*) cultivar, Om Rabia3, and investigated the functional properties of the encoded transporters using a two-electrode voltage-clamp technique, after expression in *Xenopus* oocytes. Both transporters displayed high selectivity for Na⁺, their permeability to other monovalent cations (K⁺, Li⁺, Cs⁺, and Rb⁺) being ten times lower than that to Na⁺. Both TdHKT1;4-1 and TdHKT1;4-2 transported Na⁺ with low affinity, although the half-saturation of the conductance was observed at a Na⁺ concentration four times lower in TdHKT1;4-1 than in TdHKT1;4-2. External K⁺ did not inhibit Na⁺ transport through these transporters. Quinine slightly inhibited TdHKT1;4-2 but not TdHKT1;4-1. Overall, these data identified TdHKT1;4 transporters as new Na⁺-selective transporters within the HKT family, displaying their own functional features. Furthermore, they showed that important differences in affinity exist among durum wheat HKT1;4 transporters. This suggests that the salt tolerance QTL involving HKT1;4 may be at least in part explained by functional variability among wheat HKT1;4-type transporters.

Key words: Durum wheat, electrophysiology, HKT1;4, salt tolerance, sodium transport, *Xenopus* oocyte.

Introduction

High soil salinity, which limits the yield of most crop species, is a major constraint for agriculture, particularly affecting arid and semi-arid areas (Rengasamy, 2006; James *et al.*, 2012). Plant tolerance to salinity constraint involves complex and integrated responses, at the cell, metabolic, and even anatomic levels, the relative contribution of which is dependent on the plant species. However, it involves, in every species, the ability of the

plant to maintain efficient root K⁺ uptake in the presence of high Na⁺ concentrations, and to tightly control net Na⁺ uptake by the roots and Na⁺ translocation and accumulation in leaves, as young leaves and photosynthetic tissues are very sensitive to salt stress (Apse and Blumwald, 2007; Munns and Tester, 2008).

Among the identified determinants of plant salt tolerance have been found several Na⁺ transport systems (Pardo

Abbreviations: HKT, high-affinity K⁺ transporter; I–V, current–voltage; QTL, quantitative trait locus; SE, standard error.

© The Author 2013. Published by Oxford University Press on behalf of the Society for Experimental Biology.

This is an Open Access article distributed under the terms of the Creative Commons Attribution License (<http://creativecommons.org/licenses/by/3.0/>), which permits unrestricted reuse, distribution, and reproduction in any medium, provided the original work is properly cited.

et al., 2006; Munns and Tester, 2008). The first transport systems that have been identified as playing a role in salt tolerance are H^+/Na^+ antiporters present either at the plasma membrane or at the tonoplast. The importance of the plasma-membrane Salt Overly Sensitive 1 (SOS1) antiporter in plant salt tolerance could be linked to the involvement of this system in the control of root-to-shoot Na^+ transport and the maintenance of Na^+/K^+ homeostasis upon salt stress (Wu *et al.*, 1996; Shi *et al.*, 2002; Olías *et al.*, 2009). NHX vacuolar antiporters, which allow Na^+ and K^+ accumulation in the vacuole, are thought to play important roles in osmoregulation and to prevent overaccumulation of Na^+ in the cell cytosol upon salt stress (Apse *et al.*, 1999, 2003; Brini *et al.*, 2007; Rodríguez-Rosales *et al.*, 2009). Another group of transport systems identified as key determinants of plant salinity tolerance are Na^+ transporters from the so-called high-affinity K^+ transporter' (HKT) family (Munns and Tester, 2008; Hauser and Horie, 2010). In *Arabidopsis*, AtHKT1 has been shown to control Na^+ accumulation in the shoots in salt-stress conditions by mediating Na^+ retrieval from the ascending xylem sap in the roots (Sunarpi *et al.*, 2005; Davenport *et al.*, 2007) and Na^+ recirculation from shoots to roots via phloem sap loading (Berthomieu *et al.*, 2003). Analysis of several quantitative trait loci (QTLs) of salt tolerance in rice and wheat has provided further evidence for the importance of HKT genes in control of Na^+ exclusion from the leaves upon salinity stress (Ren *et al.*, 2005; Huang *et al.*, 2006; Byrt *et al.*, 2007; James *et al.*, 2011).

Whereas the HKT family is comprised of a single gene in *Arabidopsis thaliana*, encoding a Na^+ -selective transporter (Uozumi *et al.*, 2000; Mäser *et al.*, 2001), it is much larger in cereals: nine HKT genes are present in rice (*Oryza sativa*), and six to twenty-four HKT are expected from Southern blot analyses to be present in barley (*Hordeum vulgare*) and wheat species with different ploidy levels (Garcia-deblás *et al.*, 2003; Huang *et al.*, 2008). Partial characterization of the rice HKT family has revealed an important diversity, at both the expression and functional levels, suggesting that the different members have specific roles (Corratgé-Faillie *et al.*, 2010). Some members were indeed reported to display specific expression in vascular tissues (Ren *et al.*, 2005), while other members were rather/also shown to be expressed in other tissues, for instance in root peripheral layers (Kader *et al.*, 2006; Horie *et al.*, 2007; Jabnoute *et al.*, 2009). At the functional level, strong differences in relative permeability to Na^+ and K^+ were observed between rice HKT members, some of them being Na^+ selective, like AtHKT1, while others displayed high permeability to both Na^+ and K^+ or high permeability to K^+ (Horie *et al.*, 2001; Ren *et al.*, 2005; Jabnoute *et al.*, 2009; Horie *et al.*, 2011; Oomen *et al.*, 2012; Sassi *et al.*, 2012). Differences in Na^+/K^+ permeability correlated well with overall sequence differences, which led to the sorting of HKT transporters into two subfamilies corresponding to the two main phylogenetic branches of the rice family: subfamily 1 regroups Na^+ -selective HKT transporters, and subfamily 2 comprises transporters displaying permeability to K^+ (Platten *et al.*, 2006). In addition to the

relative permeability to Na^+ and K^+ , strong functional differences between rice HKT members were also shown to concern Na^+ transport affinity (Garcia-deblás *et al.*, 2003; Jabnoute *et al.*, 2009).

HKT genes shown to be associated to QTLs of salt tolerance in rice and wheat belong to subfamily 1. In rice, the SKC1 trait of leaf K^+ homeostasis upon salt stress, identified in a population derived from a cross between the salt-tolerant cultivar Nona Bokra and the salt-sensitive one Koshihikari, corresponds to the HKT1;5 gene (Lin *et al.*, 2004; Ren *et al.*, 2005). OsHKT1;5 was shown to encode a Na^+ -selective transporter, insensitive to external K^+ in both Nona Bokra and Koshihikari. The Nona Bokra's variant of the transporter was found to be slightly more conductive to Na^+ than the Koshihikari's one (Ren *et al.*, 2005). OsHKT1;5 transcripts were localized in vascular tissues, mainly in root xylem parenchyma, which suggested a role for OsHKT1;5 in Na^+ retrieval from the xylem sap upon salt stress (Ren *et al.*, 2005). In wheat, HKT1;5-like genes have also been found to correspond to QTLs of Na^+ exclusion from the shoots upon salt stress (Dvořák *et al.*, 1994; Dubcovsky *et al.*, 1996; Byrt *et al.*, 2007). Durum wheat (*Triticum turgidum* L. subsp. durum; tetraploid, comprised genomes A and B) is more salt sensitive than bread wheat (*Triticum aestivum*; hexaploid, comprised genomes A, B, and D) and the wheat ancestor *Triticum monococcum* (diploid, possessing an A^m genome), and displays a poorer ability to exclude Na^+ from the leaf blades (Gorham *et al.*, 1990). A locus enabling improvement of leaf Na^+ exclusion in durum wheat, *Kna1*, found in the D genome of bread wheat, corresponds to an HKT1;5-like gene sharing 66% identity with the rice HKT1;5 gene (Byrt *et al.*, 2007). Another source of leaf Na^+ exclusion, *Nax2*, absent in durum or bread wheat but found in the A genome of the diploid wheat ancestor *T. monococcum*, also corresponds to an HKT1;5-like gene sharing 94% identity with that from the bread wheat D genome (James *et al.*, 2006; Byrt *et al.*, 2007). All these different HKT1;5 genes associated with QTLs of salt tolerance in rice and wheat share strong expression in roots and play a role in the control of root-to-shoot Na^+ transfer, probably via retrieval of Na^+ from the xylem sap in the roots (Ren *et al.*, 2005; James *et al.*, 2006; Byrt *et al.*, 2007).

In wheat, a slightly different trait of Na^+ exclusion from the shoots upon salt stress, *Nax1*, introgressed from *T. monococcum* into a durum wheat cultivar, was shown to concern another HKT gene from subfamily 1, HKT1;4 (Lindsay *et al.*, 2004; James *et al.*, 2006; Huang *et al.*, 2006). The *Nax1* locus is indeed associated with the exclusion of Na^+ from leaf blades only upon salt stress, both by retrieval of Na^+ from the xylem in roots and leaf sheaths and by recirculation of Na^+ from the shoots to the roots via the phloem (James *et al.*, 2006). In spite of its importance in wheat salt tolerance, HKT1;4, in contrast to HKT1;5, was not functionally characterized, in either wheat or rice. Here, we isolated two HKT1;4-type isoforms from a salt-tolerant durum wheat cultivar and investigated the functional properties of the two transporters using *Xenopus laevis* oocytes as a heterologous expression system.

Materials and methods

Plant material and growth conditions

Om Rabia3, a salt-tolerant Tunisian cultivar of durum wheat [*T. turgidum* L. subsp. *durum* (Desf.) Husn.], was supplied by the Laboratoire de Physiologie Végétale from the INRAT (Tunis, Tunisia). Seeds were surface sterilized in 0.5% NaOCl for 15 min, then washed three times with sterile water and placed on a sheet of Whatman #1 filter paper in Petri dishes in the dark for germination. Four-day-old seedlings were transferred to a hydroponics system in half-strength Hoagland's solution (Epstein, 1972) and incubated at 25 °C in a growth chamber under a 16 h light/8 h dark photoperiod and 60 ± 10% relative humidity. A salt treatment by addition of 50 mM NaCl for 48 h was performed when plants reached the third-leaf stage.

Cloning of HKT1;4 durum wheat isoforms

Total RNA from durum wheat leaf was extracted using an RNeasy Mini kit (Qiagen). To remove contaminating genomic DNA, total RNA (10 µg) was treated with DNase (Promega). DNase-treated RNA samples (0.5 µg) were reverse transcribed using Moloney murine leukemia virus reverse transcriptase (Invitrogen). The reverse transcription (RT) reaction was performed at 37 °C for 1 h using 2 µM oligo-(dT)₁₈ primer. Two microlitres of first-strand cDNA was used as template for PCR amplification of the *HKT1;4* isoforms, using *Pfu* polymerase in a reaction solution prepared according to the instructions of the manufacturer (Fermentas). Primers, designed on the basis of the sequence of the *T. monococcum* *HKT1;4-A2* gene were 5'-ATGGCCGAGCTCATCATAAG-3' (forward) and 5'-CTAACTAAGCTTCCAGGCTTTG-3' (reverse). The amplification protocol, after denaturation of the cDNA for 5 min at 94 °C, consisted of 35 cycles of 30 s at 94 °C, 30 s at 60 °C, and 90 s at 72 °C, with a final extension for 5 min at 72 °C. Amplified products were cloned using the pGEM-T Easy vector system (Promega), and successful isolation of *HKT1;4*-type cDNA was confirmed by digestion and sequencing.

Verification of 5' and 3' ends of cloned cDNA was performed by 5'- and 3'-rapid amplification of cDNA ends (RACE) on DNase-treated RNA samples using a FirstChoice RLM Race kit (Ambion). Primers hybridizing specifically to *TdHKT1;4-1* or *TdHKT1;4-2* used for 5'-RACE were 5'-ATGCGATGACAGGAGGGACAATGC-3' (hybridization at +99 nt from the start of the *TdHKT1;4-1* coding sequence) and 5'-CATGAGGGACATTACATTGTTGAGCG-3' (hybridization at +90 bp from the start of the *TdHKT1;4-2* coding sequence). Those used for 3'-RACE, were 5'-GGCGTCAAGGACCAACCCAG-3' (hybridization at +1315 nt in *TdHKT1;4-1* cDNA) and 5'-CCAGCGTGAAGGACCATCCCA-3' (hybridization at +1307 nt in *TdHKT1;4-2* cDNA), respectively.

Correction of the cloned *TdHKT1;4-2* cDNA sequence, following 5'-RACE results, was performed using a QuikChange Site-Directed Mutagenesis kit (Stratagene). The following forward and reverse primers introducing a single base-pair mutation were used for mutagenesis: 5'-GGCCGAGCTCATCGTAAGGTCCGCGAGC-3' and 5'-CGTCGCGGACCTTACGATGAGCTCCGCC-3'.

Expression in *X. laevis* oocytes

The coding regions of *TdHKT1;4-1* and *TdHKT1;4-2* were subcloned into the pGEMXho vector (derived from pGEMD3; D. Becker, Würzburg) downstream from the T7 promoter and between the 5'- and 3'-untranslated regions of the *Xenopus* β -globin gene. Capped and polyadenylated copy RNA (cRNA) were synthesised *in vitro*, from linearized vector (for *TdHKT1;4-1*) or from high-fidelity PCR-amplified (using iProof polymerase; Biorad) T7 promoter to the linearization site fragment (for *TdHKT1;4-2*), using an mMESSAGE mMACHINE T7 kit (Ambion). Oocytes, isolated as described previously (Véry *et al.*, 1995), were injected with either

20 ng of *TdHKT1;4-1* or *TdHKT1;4-2* cRNA or 20 nl of diethylpyrocarbonate-treated water for control oocytes, and then kept at 18 °C in ND96 solution (96 mM NaCl, 2 mM KCl, 1.8 mM CaCl₂, 1 mM MgCl₂, 2.5 mM sodium pyruvate, and 5 mM HEPES/NaOH, pH 7.4) supplemented with 0.5 mg l⁻¹ of gentamicin, until electrophysiological recordings.

Two-electrode voltage-clamp method

Whole-oocyte currents were recorded using a two-electrode voltage-clamp technique 1–2 d after cRNA injection, as described by Mian *et al.* (2011). All electrodes were filled with 3 M KCl. The external solution bathing the oocyte was continuously percolated during the voltage-clamp experiment. All bath solutions contained a background of 6 mM MgCl₂, 1.8 mM CaCl₂, and 10 mM MES-1,3-bis[tris(hydroxymethyl)methylamino]propane, pH 5.5. Monovalent cations were added to the background solution as glutamate or chloride salts. The chloride concentration was constant, except when otherwise mentioned, in each set of solutions. D-Mannitol was added when necessary to adjust the osmolality, which was set to 220–240 mosM in each set of solutions, except in experiments aimed at examining the effect of osmolality variation in the range 150–400 mosM. The actual concentrations of K⁺ and Na⁺ in the bath solutions were checked systematically by flame photometry. To extract HKT-mediated currents from total oocyte currents, mean currents recorded in water-injected control oocytes from the same batch in the same ionic conditions were subtracted from those recorded in HKT-expressing oocytes. *TdHKT1;4-1* and *TdHKT1;4-2* current–voltage (I–V) relationships were constructed with transporter-extracted currents.

Results

Isolation of two HKT1;4 durum wheat genes

In durum wheat, analysis by Southern blotting has suggested the existence of five *HKT1;4*-like genes (Huang *et al.*, 2008). Isolation of durum wheat *HKT1;4* cDNA was attempted, taking advantage of the availability of two full-length *HKT1;4* gene sequences in the wheat ancestor *T. monococcum* (Fig. 1). The coding regions of the two *T. monococcum* genes, *TmHKT1;4-A1* and *TmHKT1;4-A2*, share 88% identity and display, at the start and end, strong sequence identity. This encouraged us to use the *TmHKT1;4-A1/A2* sequence to design primers for the cloning by reverse transcription-PCR of durum wheat *HKT1;4* cDNA. Two durum wheat *HKT1;4* full-length cDNA were isolated by this strategy. Their genome origin (i.e. A or B) being unknown, they were named *TdHKT1;4-1* and *TdHKT1;4-2* (GenBank accession nos KF443078 and KF443079, respectively). The start and end sequences of the two clones, imposed by the primers used, were verified by 5' and 3' RACE. A mutation at position 17 from ATG was detected in *TdHKT1;4-2* and was corrected by site-directed mutagenesis.

TdHKT1;4-1 and *TdHKT1;4-2* presented open reading frames of 1692 and 1686 bp, respectively, sharing 92% identity. At the amino acid level, *TdHKT1;4-1* and *TdHKT1;4-2* thus comprised 564 and 562 residues, respectively, and displayed 89% identity. This level of identity between the two durum wheat transporters suggested that they are not encoded by different alleles of the same gene but rather by two different *HKT1;4*-type genes. The phylogenetic relationships were analysed between the two durum wheat transporters, the rice

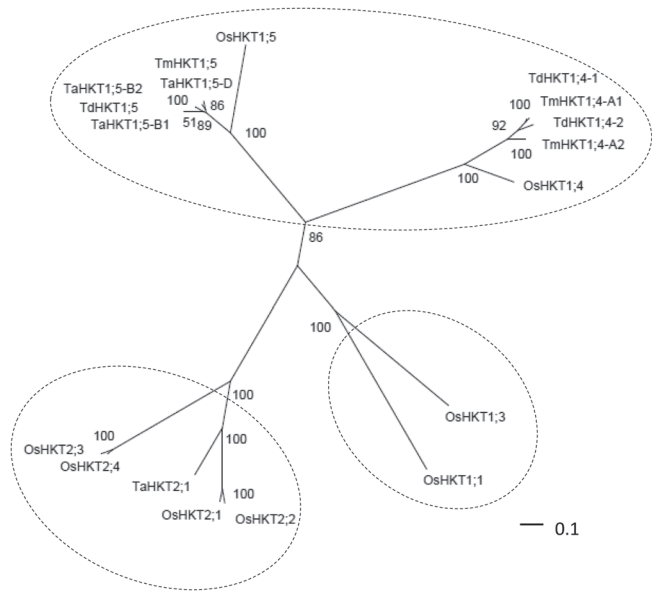


Fig. 1. Phylogenetic relationships between HKT transporters in rice and wheat. The unrooted phylogenetic tree was constructed using full polypeptide sequences aligned with MUSCLE (<http://www.bioinformatics.nl/tools/muscle.html>; Dereeper *et al.*, 2008), and the neighbour-joining method with 1000 bootstrap replicates, using PhyML software (<http://phylogeny.lirmm.fr>). The tree was drawn using Dendroscope (Huson *et al.*, 2007). Bootstrap values (as percentages) are indicated at the corresponding nodes. The protein accession numbers are: OsHKT1;1, Q7XPF8.2; OsHKT1;3, Q6H501.1; OsHKT1;4, Q7XPF7.2; OsHKT1;5, Q0JNB6.1; OsHKT2;1, Q0D9S3.1; OsHKT2;2, BAB61791.1; OsHKT2;3, Q8L481.1; OsHKT2;4, Q8L4K5.1; TaHKT1;5-B1, ABG33943; TaHKT1;5-B2, ABG33944; TaHKT1;5-D, ABG33945; TaHKT2;1, AAA52749; TmHKT1;4-A1, ABK41858; TmHKT1;4-A2, ABK41857; TmHKT1;5, ABG33939; TdHKT1;4-1, KF443078; TdHKT1;4-2, KF443079. Os, *Oryza sativa*; Ta, *Triticum aestivum*; Td, *Triticum turgidum* subsp. *durum*; Tm, *Triticum monococcum*.

HKT transporters, and the other HKT members already identified in wheat. Three branches were clearly distinguishable in the resulting phylogenetic tree (Fig. 1), corresponding to the HKT subfamily 2 and two distinct groups within subfamily 1, one comprising HKT1;1 and HKT1;3, and the other comprising HKT1;4 and HKT1;5. The two identified durum wheat transporters were clearly shown to be related to HKT1;4 members. They display ~65% identity with OsHKT1;4. As expected, both were close to the HKT1;4-like transporters already identified in *T. monococcum*, and particularly to TmHKT1;4-A1 (Fig. 1): TdHKT1;4-1 was very close to TmHKT1;4-A1, sharing the same length and 97% identity, TdHKT1;4-2 was 2 aa shorter and shared 88% identity with TmHKT1;4-A1. Both durum wheat HKT1;4-like transporters shared 84% identity with TmHKT1;4-A2 and were slightly longer (by 7–9 aa).

TdHKT1;4-1 and TdHKT1;4-2 expressed in Xenopus oocytes mediate Na⁺-selective transport

TdHKT1;4-1 and TdHKT1;4-2 transport properties were studied by performing voltage-clamp experiments in *Xenopus* oocytes. As TdHKT1;4-1 and TdHKT1;4-2 both belong to HKT subfamily 1, they were expected to be Na⁺ selective. For both systems, injection of 20 ng of transporter cRNA in oocytes resulted in large exogenous currents in Na⁺-containing solutions, from 1 d after injection: for example, there was about a 50- and 75-fold increase in oocyte conductance in the presence of 3 mM NaCl upon expression of TdHKT1;4-1 and TdHKT1;4-2, respectively (Fig. 2). This indicated that both transporters were efficiently expressed and targeted to the oocyte membrane.

To investigate the cation selectivity of both durum wheat HKT1;4 transporters, oocyte currents were elicited in the presence of different monovalent cations (Na⁺, K⁺, Rb⁺, Cs⁺, and Li⁺) at a concentration of 3 mM (Fig. 2). The membrane conductance in HKT1;4-expressing oocytes (Fig. 2B, C) was in all solutions at least five times higher than that in water-injected control oocytes (Fig. 2A), allowing precise determination of the HKT transporter cation selectivity. In the presence of 3 mM external Na⁺, TdHKT1;4-1 and

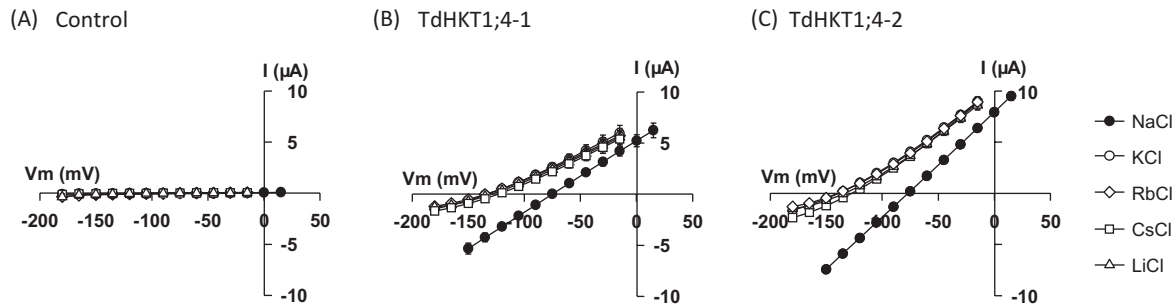


Fig. 2. TdHKT1;4-1 and TdHKT1;4-2 function as monovalent cation transporters with a strong preference for Na⁺ in *Xenopus* oocytes. Bath solutions contained the standard background supplemented with NaCl, KCl, RbCl, CsCl, or LiCl, at 3 mM. The voltage-clamp protocol consisted of 12 pulses of 1 s, with a voltage increment of 15 mV between pulses. (A) Currents from control (H₂O-injected) oocytes plotted against applied voltages. (B, C) Currents flowing through TdHKT1;4-1 (B) and TdHKT1;4-2 (C) transporters versus applied voltages. Data are means \pm standard error (SE) ($n=4$) and are representative of five experiments performed on different oocyte batches.

TdHKT1;4-2 mediated large inward and outward currents reversing close to -75 mV (Fig. 2B, C). When another monovalent cation (K^+ , Rb^+ , Cs^+ , or Li^+) replaced Na^+ at the same concentration, both inward and outward currents could still be observed, but the I–V relationship was shifted negatively by 55–60 mV in both transporters (Fig. 2B, C). Such shifts in I–V relationships and highly negative membrane polarizations were not observed in control oocytes, in which the recorded resting membrane potentials were never more negative than -50 mV and the shifts in I–V relationships upon changing the cation in the bath were lower than 15 mV (Fig. 2A). Thus, expression of TdHKT1;4-1 or TdHKT1;4-2 gave rise to exogenous conducting pathways displaying selectivity for Na^+ . In oocytes expressing either of the two HKT1;4-type transporters, replacing Na^+ by K^+ , Rb^+ , Cs^+ , or Li^+ in the bath also reduced (by about three times) the inward conductance of the transporter (Fig. 2B, C). As a whole, these experiments indicated that TdHKT1;4-1 and TdHKT1;4-2 are both Na^+ -selective, as expected. Besides Na^+ , which was the most permeant cation, the other tested monovalents permeated through these two systems very similarly. The level of discrimination between Na^+ and the other monovalents was strongly similar in the two transporters.

Affinity for Na^+ of the two durum wheat HKT1;4 transporters

Na^+ transport through TdHKT1;4-1 and TdHKT1;4-2 was analysed further by exposing the oocytes to bath solutions containing varying concentrations of Na^+ (0.1, 1, 10, 50, and 100 mM). In water-injected control oocytes, currents were of very low amplitude in all these solutions (Fig. 3A, B, inset) and responded weakly to Na^+ concentration changes: there was an increase of only ~2-fold of the oocyte inward conductance and shift of the resting membrane potential by ~25 mV upon a Na^+ increase from 0.1 to 100 mM (not shown). Oocytes expressing TdHKT1;4-1 or TdHKT1;4-2, in contrast, displayed currents that were much larger than those in water-injected oocytes (conductance 15 to >100 times greater), and that strongly responded to changes in external Na^+ concentration in the tested range of concentrations (Fig. 3A, B): for example, there was a 9- and 6-fold increase of the oocyte inward conductance and a mean shift of the resting membrane potential by 127 and 115 mV, upon a Na^+ increase from 0.1 to 100 mM, in TdHKT1;4-1- and TdHKT1;4-2-expressing oocytes, respectively.

Detailed analysis of the currents passing through each of the two transporters indicated that the zero-current potential varied linearly with the logarithm of the external activity of Na^+ within the 1–100 mM concentration range (Fig. 3C, D). The slope of the zero-current potential variation was of 50 mV per 10-fold increase in Na^+ activity in both transporters, which was close to the expected value (58 mV per 10-fold activity increase) in a purely Na^+ -selective system mediating passive transport. At submillimolar Na^+ concentrations, the slope was lower, which probably reflects a slight permeability of both systems to (an)other ion(s) present in the bath solution. Overall, this indicated that TdHKT1;4-1

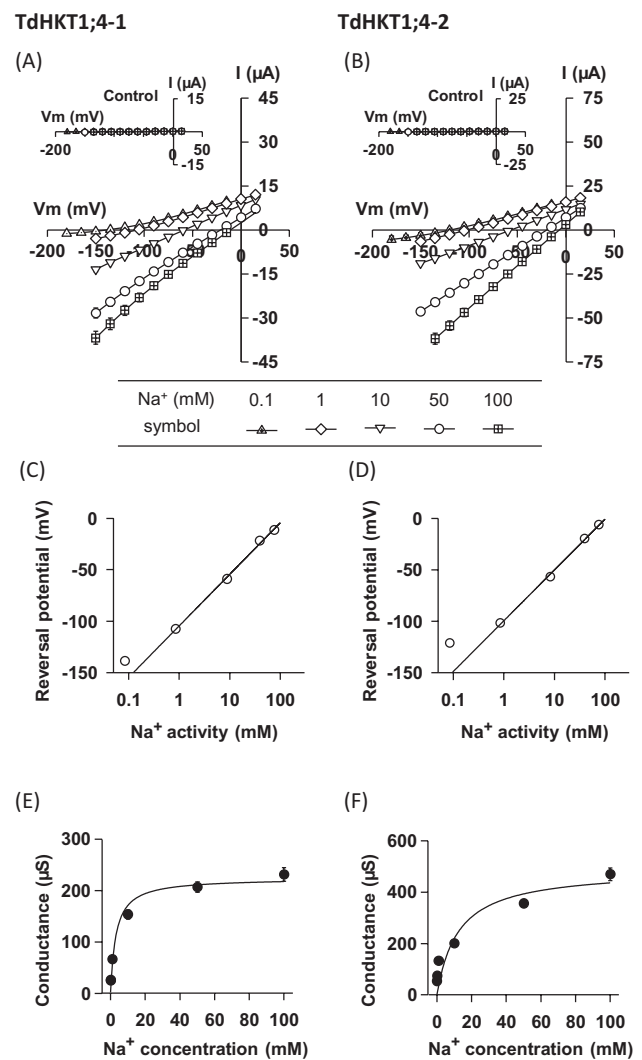


Fig. 3. TdHKT1;4-1 and TdHKT1;4-2 transporters differ in their affinity for Na^+ . (A, B) Currents flowing through TdHKT1;4-1 (A) or TdHKT1;4-2 (B) transporters versus applied voltages in the presence of varying external Na^+ concentrations (0.1, 1, 10, 50, and 100 mM). Na^+ was provided as glutamate salt. Data are means \pm SE ($n=4$ in A and $n=5$ in B) and are representative of six experiments performed on different oocyte batches. Insets in (A) and (B): I–V relationships in water-injected oocytes belonging to the same batch as HKT-expressing oocytes. Experimental conditions were the same as for HKT-expressing oocytes. Currents are means \pm SE ($n=4$ in A and $n=3$ in B). (C, D) Zero-current potentials through TdHKT1;4-1 (C) and TdHKT1;4-2 (D) versus bath Na^+ activity. Current reversal potentials were obtained from the I–V data shown in (A) and (B). (E, F) Variation of TdHKT1;4-1 (E) and TdHKT1;4-2 (F) macroscopic inward conductance with external Na^+ concentration. Macroscopic inward conductances were defined as slopes of I–V relationships between the three most negative imposed potentials in each ionic condition. The conductances in (E) and (F) were extracted from the I–V data shown in (A) and (B). Inward conductances plotted against external Na^+ concentrations were fitted (solid line) with a Michaelis–Menten equation to determine the apparent half-saturation constant (K_M). Fitted parameters were as follows: $K_M \sim 3$ mM and $G_{max} \sim 225$ μS (E); $K_M \sim 12$ mM and $G_{max} \sim 490$ μS (F).

and TdHKT1;4-2 behave as typical Na^+ -selective ‘uniporters’ from the HKT subfamily 1 (Jabnourne *et al.*, 2009).

The increase in both transporters’ inward conductance with increasing Na^+ concentration became saturated at high Na^+ concentration. Fitting the inward conductance versus the external Na^+ relationship with Michaelis–Menten hyperbolic functions allowed to compare the affinity for Na^+ of the two transporters (Fig. 3E, F). Both transporters appeared to transport Na^+ with low affinity. The half-saturation of the conductance was, however, observed at a 4-fold lower Na^+ concentration in TdHKT1;4-1 than in TdHKT1;4-2 ($K_M \sim 3$ and 12 mM, respectively). These results also suggested that the maximal inward conductance was slightly (~ 2 -fold) lower in TdHKT1;4-1 than in TdHKT1;4-2 (Fig. 3E, F).

Regulation of TdHKT1;4-mediated Na^+ transport activity by external cations and osmolarity

Little is known so far on the regulation of HKT transporter activity. Na^+ transport in several HKT transporters was reported to be sensitive to external K^+ concentration, with K^+ having an inhibitory effect (Gassmann *et al.*, 1996; Garcíadeblás *et al.*, 2003; Jabnourne *et al.*, 2009; Mian *et al.*, 2011; Munns *et al.*, 2012). In particular, this is the case for TmHKT1;5 in *T. monococcum* at low (1 mM) but not high (10 mM) Na^+ concentrations (Munns *et al.*, 2012). One report, in eucalyptus, also points to regulation of subfamily 1 HKT transport activity by osmolarity (Liu *et al.*, 2001). The effect of both external K^+ and osmolarity was examined in the two durum wheat HKT1;4 transporters. The analysis of K^+ effect on TdHKT1;4-mediated Na^+ transport was performed at two (rather) low, external Na^+ concentrations, 0.1 and 3 mM (Fig. 4A, B). K^+ was added at 30 or 50 mM. Addition of KCl did not inhibit Na^+ transport but, surprisingly, stimulated currents in both transporters (1.5- to 2-fold

increase in conductance in the presence of K^+ ; Fig. 4A, B). Stimulation of TdHKT1;4-1 and TdHKT1;4-2 activity by KCl concerned similarly inward and outward currents. It was accompanied by weak shifts of zero-current potential (5–10 mV in the presence of 0.1 mM Na^+ and 2–5 mV at 3 mM Na^+). This confirmed that K^+ transport through the two TdHKT1;4 transporters was very limited, in agreement with selectivity analyses performed by external cation exchanges (Fig. 2), and therefore indicated that the stimulation of currents by KCl was essentially not due to K^+ transport. As a comparison, the effect of another cation, Li^+ , on TdHKT1;4-1 and TdHKT1;4-2 activity was also examined (Fig. 4C, D). A similar stimulation of inward and outward currents was observed upon LiCl addition, although it was weaker. Thus, the observed stimulation of Na^+ transport seemed weakly cation specific, and may reflect an effect of ionic strength on the activity of the two transporters.

The effect of osmolarity on TdHKT1;4-1 and TdHKT1;4-2 activity was examined in bath solutions containing 1 mM Na^+ by either decreasing the usual osmolarity by $\sim 30\%$ or increasing it ~ 2 -fold. This led to a very slight decrease (by $\sim 10\%$) of the inward and outward Na^+ conductance in TdHKT1;4-1 and was without any effect in TdHKT1;4-2 ($n=5$; not shown).

Available analyses relative to ionic regulation of Na^+ -permeable systems mostly concern *in planta* experiments either performed on Na^+ fluxes or on Na^+ /cationic currents across cell membranes recorded in patch-clamp experiments. Systems operating in these experiments, not molecularly identified, may correspond for some of them to HKT transporters. Polyamines, which have been shown to be involved in tolerance to abiotic stress (and in particular drought and salt stress), are known to modulate the activity of several plant ion channels, including Na^+ -permeable conductances (Shabala *et al.*, 2007; Zhao *et al.*, 2007; Alcázar *et al.*, 2010). In barley root epidermal cells, for instance, Na^+ currents were

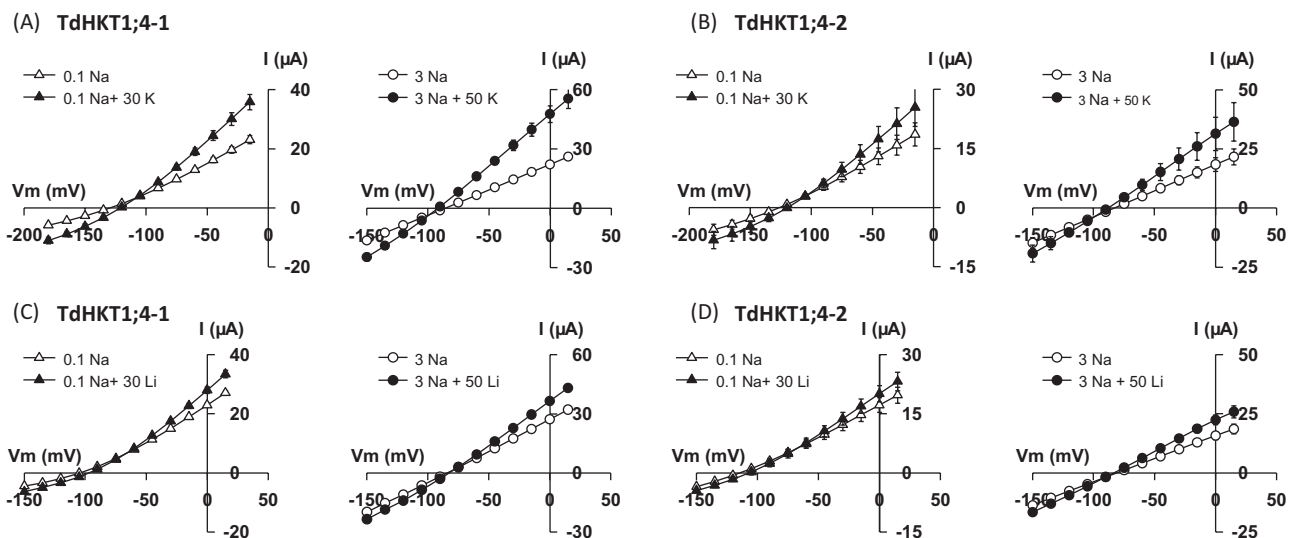


Fig. 4. Effect of external K^+ and Li^+ on Na^+ transport by TdHKT1;4-1 (A, C) and TdHKT1;4-2 (B, D). Bath solutions contained 0.1 mM (left panels) or 3 mM (right panels) Na^+ (glutamate salts). They were or were not supplemented with KCl (A, B) or LiCl (C, D), with concentration of the added salt being 30 mM (left panels) or 50 mM (right panels). Data are means \pm SE ($n=7$ in A, $n=6$ in B, $n=5$ in C, $n=8$ in D) and are representative of two experiments performed on different oocyte batches.

reported to be strongly inhibited by spermidine and spermine added extracellularly at 1 mM (Zhao *et al.*, 2007). The effect of spermidine and spermine was tested on the two wheat HKT1;4 transporters. Addition of 1 mM spermidine or spermine to the bath solution containing 1 mM Na⁺ did not affect TdHKT1;4 inward or outward currents (Fig. 5A, B).

In vivo analyses have also frequently mentioned several inorganic divalents (Ba²⁺, Ca²⁺, Zn²⁺), trivalents (La³⁺, Gd³⁺), and the quinine alkaloid as inhibitors of Na⁺ influx into tissues or of Na⁺ and/or non-selective cation currents across plasma membranes (Davenport and Tester, 2000; Demidchik and Tester, 2002; Zhao *et al.*, 2007; Schulze *et al.*, 2012). Based on these reports, the effects of Zn²⁺, La³⁺, and Gd³⁺ (at 100 μ M) and quinine (at 0.5 mM) were examined on TdHKT1;4-mediated Na⁺ currents in bath solutions containing 1 mM Na⁺. The effect of amiloride, a classical inhibitor of Na⁺-coupled systems, was also examined at 0.5 mM. Addition of Zn²⁺, La³⁺, Gd³⁺, or amiloride did not produce any effect on TdHKT1;4 currents ($n=4$, data not shown, and Fig. 5C, D). Quinine, in contrast, decreased (by ~25%) TdHKT1;4-2 (but not TdHKT1;4-1) inward and outward currents (Fig. 5C, D). This suggests that some of the Na⁺ conductances already identified *in vivo* may correspond to HKT transporters and encourages further examination of quinine sensitivity within the HKT family.

Discussion

HKT1;4, a new functionally characterized HKT type

The cereal HKT family is thought, from rice knowledge and available information in other species, to possess six

main genes, corresponding, based on rice nomenclature, to HKT1;1/HKT1;2-type, HKT1;3-type, HKT1;4-type, HKT1;5-type, HKT2;1/HKT2;2-type, and HKT2;3/HKT2;4-type (Garcia-deblás *et al.*, 2003; Huang *et al.*, 2008; Hauser and Horie, 2010; Fig. 1). The transporters encoded by these main genes have almost all been functionally characterized in rice, and for two of them also in barley and/or wheat (Rubio *et al.*, 1995; Horie *et al.*, 2001; Garcia-deblás *et al.*, 2003; Haro *et al.*, 2005; Ren *et al.*, 2005; Jabnourne *et al.*, 2009; Horie *et al.*, 2011; Mian *et al.*, 2011; Munns *et al.*, 2012; Oomen *et al.*, 2012; Sassi *et al.*, 2012). Only HKT1;4 type was not yet functionally characterized in any plant species. In rice, HKT1;4 displays 34–42% identity with other HKT members, its closest relative being HKT1;5.

Here, we identified and functionally characterized two HKT1;4-type transporters from durum wheat. The two transporters were expressed in *Xenopus* oocytes. In this expression system, high activity levels, comparable to those obtained upon expression of plant K⁺ or anion channels (which have been successfully characterized), were achieved for both transporters (Becker *et al.*, 2004; Geiger *et al.*, 2009; Jeanguenin *et al.*, 2011; Fig. 3). Thus, currents through these transporters could be recorded with good reliability, even in the presence of low concentrations of the main permeant cation (e.g. 100 μ M Na⁺) or of weakly permeant cations: in all tested conditions, the macroscopic conductance of either transporter was at least five times higher than that of the endogenous systems of the corresponding control oocytes (Figs 2 and 3A, B), enabling precise determination of the transporter functional properties.

Cation exchange experiments and analysis of zero-current potentials in bath solutions varying in Na⁺ concentrations indicated that both transporters mediate passive preferential Na⁺ transport, and that the level of discrimination between Na⁺ and the other monovalent cations is the same in both transporters (Figs 2 and 3C, D). Estimation of ion permeability ratios in the two durum wheat HKT1;4 transporters using the Goldman-Hodgkin-Katz equation (as classically done in systems mediating diffusive transport of monovalents) gave $P_X/P_{Na}=0.08-0.14$ in both transporters, with X being K, Rb, Li, or Cs. This value is close to that determined for the rice HKT1;3 transporter ($P_X/P_{Na}=0.06$, with X being K, Rb, Li, or Cs; Jabnourne *et al.*, 2009; Sassi *et al.*, 2012). Less difference between Na⁺ and the other cations was observed for conductance ($G_X/G_{Na}=0.25-0.3$ in the two durum wheat transporters), as reported previously in the rice HKT1;3 transporter. Thus, the two TdHKT1;4 transporters are clearly Na⁺-selective systems, as expected for all subfamily 1 HKT members (Platten *et al.*, 2006). Interestingly, OsHKT1;3, like the two durum wheat HKT1;4 transporters, did not display discrimination between K⁺, Rb⁺, Li⁺, and Cs⁺ (Jabnourne *et al.*, 2009). This feature and a quite fixed value of permeability ratio between these cations and Na⁺ (close to 0.1) may be a trait of subfamily 1 members. Subfamily 2 HKT transporters, in contrast, appear more variable in their cation selectivity, showing major permeability differences among cations and between HKT members (Jabnourne *et al.*, 2009; Mian *et al.*, 2011; Sassi *et al.*, 2012).

In contrast to ion selectivity, Na⁺ transport affinity has been shown to be strongly variable within members of HKT

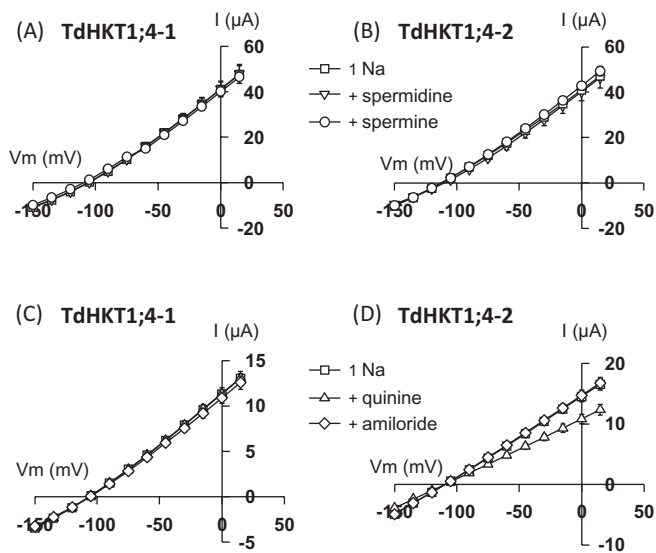


Fig. 5. Effect of potential inhibitors on Na⁺ transport activity in TdHKT1;4-1 (A, C) and TdHKT1;4-2 (B, D). Control (1 Na) external solution contained 1 mM Na⁺ as glutamate salt. Currents were recorded successively in the control solution and in the same solution but supplemented with 1 mM spermine or 1 mM spermidine (A, B) or with 500 μ M amiloride or 500 μ M quinine (C, D). Data are means \pm SE ($n=7$ in A, $n=3$ in B, $n=5$ in C and D).

subfamily 1: OsHKT1;1 displayed very low transport affinity when expressed in yeast or oocytes (e.g. half maximal conductance in oocytes at ~ 75 mM Na⁺), OsHKT1;3 transported Na⁺ also with low affinity, although with a 20 times lower K_M (half maximal conductance in oocytes at ~ 3.5 mM Na⁺), and HKT1;5 in rice and wheat displayed high-affinity Na⁺ transport (K_M in oocytes < 1 mM Na⁺) (Garcia-deblás *et al.*, 2003; Ren *et al.*, 2005; Jabnourne *et al.*, 2009; Munns *et al.*, 2012). Na⁺ transport affinity of the two durum wheat HKT1;4 transporters characterized in the present study was low, similar to that of OsHKT1;3 for TdHKT1;4-1, and in between that of OsHKT1;1 (six times higher) and that of OsHKT1;3 (3.5 times lower) for TdHKT1;4-2 (Fig. 3E, F). Thus, characterization of the two durum wheat HKT1;4 transporters confirmed the high level of variability in Na⁺ transport affinity within cereal HKT subfamily 1. It is worth noting that large differences in conductance are also observed among the different HKT members when characterized in oocytes in similar conditions (Fig. 3; Jabnourne *et al.*, 2009; Munns *et al.*, 2012). For instance, the maximal conductances of TdHKT1;4-1 and TdHKT1;4-2 can be estimated to be about four and seven times larger, respectively, than the maximal conductance of the high-affinity TmHKT1;5 transporter (Fig. 3; Munns *et al.*, 2012). Although the expression levels of the different transporters are unknown in the plant, such differences in affinity for Na⁺ and maximal conductance strongly suggest that the different subfamily 1 HKT transporters in cereals have distinct physiological roles.

Direction of transport and level of inhibition by K⁺, have been identified as other sources of variability among cereal subfamily 1 HKT transporters. OsHKT1;1 displayed strong inward rectification in oocytes. The two durum wheat HKT1;4 transporters, like HKT1;5 and HKT1;3 in wheat and/or rice, allowed both inward and outward Na⁺ transport (Ren *et al.*, 2005; Jabnourne *et al.*, 2009; Munns *et al.*, 2012; Fig. 3A, B). Concerning the sensitivity to external K⁺, TdHKT1;4 transporters were, like OsHKT1;3 and OsHKT1;5, not inhibited by physiological concentrations of K⁺, in contrast to OsHKT1;1 and TmHKT1;5 (Ren *et al.*, 2005; Jabnourne *et al.*, 2009; Munns *et al.*, 2012; Fig. 4A, B).

As a whole, the characterization of the two durum wheat HKT1;4 transporters showed functional similarities with other HKT types of the cereal subfamily 1 but also differences with all other subfamily 1 members, indicating that none of the four main HKT types in cereal subfamily 1 are functionally redundant. Their functional diversity, notably in terms of Na⁺ transport affinity and sensibility to K⁺, may help the plant to tune its cellular Na⁺ fluxes to varying Na⁺ and K⁺ levels in different tissues and/or environmental situations.

Diversity among wheat HKT1;4 transporters

In rice, exploitation of allelic variations between salt-tolerant and salt-sensitive ecotypes has led to the identification of a number of QTLs of plant salt tolerance, one of which is associated with the *HKT1;5* gene (Ren *et al.*, 2005). In *OsHKT1;5*, four non-synonymous nucleotide substitutions in the coding region differentiate the 'salt-tolerant' allele found in Nona Bokra from the 'salt-sensitive' one in Koshihikari

(Ren *et al.*, 2005). Analysed in *Xenopus* oocytes, the Nona Bokra and Koshihikari *OsHKT1;5* transporters slightly differed in Na⁺ transport ability (50% higher conductance upon expression of the Nona Bokra transporter), which could underlie the functional difference between the two alleles *in planta* (Ren *et al.*, 2005). In *Arabidopsis*, ecotypic variation in the *AtHKT1* gene could also be related to different leaf Na⁺ contents (Rus *et al.*, 2006). In this latter study, different levels of expression of *AtHKT1* could be linked to sequence differences in the *AtHKT1* promoter region.

In wheat species, different associations of genomes are an important source of salt tolerance variability. The D genome, which exists in the hexaploid bread wheat but not in the tetraploid durum wheat, for instance, has been shown to carry an essential salt tolerance locus that coincides with an *HKT1;5* gene (Gorham *et al.*, 1987; Dubcovsky *et al.*, 1996; Byrt *et al.*, 2007). Another salt tolerance locus coinciding with an *HKT1;5* gene was identified in the A genome of the wheat ancestor *T. monococcum* (Byrt *et al.*, 2007; Munns *et al.*, 2012). This locus is absent from durum or bread wheat, which do not possess *HKT1;5* genes in their A genome (Huang *et al.*, 2008). *HKT1;5-A* from *T. monococcum* was recently isolated and functionally characterized (Munns *et al.*, 2012). No *HKT1;5* gene from durum or bread wheat, out of the three expected in the B genome and that in bread wheat D genome (Huang *et al.*, 2008), were, however, characterized, preventing us getting clues on the reasons for their varying contribution to plant salt tolerance.

Variability in *HKT1;4* gene equipment in Triticae has also been associated with differences in plant salt tolerance (Huang *et al.*, 2006; James *et al.*, 2006, 2011). One of the two *HKT1;4* genes from *T. monococcum*, introduced through crossing in durum or bread wheat, was shown to improve Na⁺ exclusion from the blades upon salt stress (James *et al.*, 2006, 2011). Durum wheat is expected (from Southern blot analyses) to possess five *HKT1;4*-like genes: two in the A genome and three in the B one (Huang *et al.*, 2008). The two durum wheat HKT1;4 transporters identified in the present study were 89% identical. This not an extremely high degree of identity, and the fact that we could isolate the same two cDNAs in different durum wheat cultivars (data not shown) suggests that the two transporters are encoded by different *HKT1;4*-type genes rather than by two alleles of the same gene. Functional characterization of the two identified durum wheat HKT1;4 transporters showed a high similarity in selectivity but important differences in macroscopic conductances: 4-fold lower affinity for Na⁺ and 2-fold higher maximal conductance in HKT1;4-2 compared with HKT1;4-1 (Fig. 3E, F). These functional differences between the two durum wheat HKT1;4 transporters, which are stronger than those observed between the Nona Bokra and Koshihikari *OsHKT1;5* transporters associated with a trait of salt tolerance (Ren *et al.*, 2005), are likely to be physiologically relevant. Thus, our study shows that important functional variability exists among durum wheat *HKT1;4* genes and encourages further examination of functional diversity among these genes in durum and other wheat species to better understand the basis of *HKT1;4*-related wheat variability in salt tolerance.

Acknowledgements

This work was supported by a French–Tunisian CMCU grant (no. 10G0913; Partenariat Hubert Curien – Utique Programme) from the Ministry of Higher Education and Scientific Research, Tunisia, and the Department of Cooperation and Cultural Action, France. The authors are grateful to Ali Sassi and Cécile Fizames (Montpellier) for assistance in electrophysiology and phylogenetic analyses.

References

- Alcázar R, Altabella T, Marco F, Bortolotti C, Reymond M, Koncz C, Carrasco P, Tiburcio AF.** 2010. Polyamines: molecules with regulatory functions in plant abiotic stress tolerance. *Planta* **231**, 1237–1249.
- Apse MP, Aharon GS, Snedden WA, Blumwald E.** 1999. Salt tolerance conferred by overexpression of a vacuolar Na⁺/H⁺ antiporter in *Arabidopsis*. *Science* **285**, 1256–1258.
- Apse MP, Blumwald E.** 2007. Na⁺ transport in plants. *FEBS Letters* **581**, 2247–2254.
- Apse MP, Sottosanto JB, Blumwald E.** 2003. Vacuolar cation/H⁺ exchange, ion homeostasis, and leaf development are altered in a T-DNA insertional mutant of *AtNHX1*, the *Arabidopsis* vacuolar Na⁺/H⁺ antiporter. *The Plant Journal* **36**, 229–239.
- Becker D, Geiger D, Dunkel M, et al.** 2004. AtTPK4, an *Arabidopsis* tandem-pore K⁺ channel, poised to control the pollen membrane voltage in a pH- and Ca²⁺-dependent manner. *Proceedings of the National Academy of Sciences, USA* **101**, 15621–15626.
- Berthomieu P, Conéjéro G, Nublat A, et al.** 2003. Functional analysis of *AtHKT1* in *Arabidopsis* shows that Na⁺ recirculation by the phloem is crucial for salt tolerance. *EMBO Journal* **22**, 2004–2014.
- Brini F, Hanin M, Mezghani I, Berkowitz GA, Masmoudi K.** 2007. Overexpression of wheat Na⁺/H⁺ antiporter *TNAX1* and H⁺-pyrophosphatase *TVP1* improve salt- and drought-stress tolerance in *Arabidopsis thaliana* plants. *Journal of Experimental Botany* **58**, 301–308.
- Byrt CS, Platten JD, Spielmeier W, James RA, Lagudah ES, Dennis ES, Tester M, Munns R.** 2007. HKT1;5-like cation transporters linked to Na⁺ exclusion loci in wheat, *Nax2* and *Kna1*. *Plant Physiology* **143**, 1918–1928.
- Corratgé-Faillie C, Jabnoute M, Zimmermann S, Véry AA, Fizames C, Sentenac H.** 2010. Potassium and sodium transport in non-animal cells: the Trk/Ktr/HKT transporter family. *Cellular and Molecular Life Sciences* **67**, 2511–2532.
- Davenport RJ, Munoz-Mayor A, Jha D, Essah PA, Rus A, Tester M.** 2007. The Na⁺ transporter *AtHKT1;1* controls retrieval of Na⁺ from the xylem in *Arabidopsis*. *Plant Cell and Environment* **30**, 497–507.
- Davenport RJ, Tester M.** 2000. A weakly voltage-dependent, nonselective cation channel mediates toxic sodium influx in wheat. *Plant Physiology* **122**, 823–834.
- Demidchik V, Tester M.** 2002. Sodium fluxes through nonselective cation channels in the plasma membrane of protoplasts from *Arabidopsis* roots. *Plant Physiology* **128**, 379–387.
- Dereeper A, Guignon V, Blanc G, et al.** 2008. Phylogeny.fr: robust phylogenetic analysis for the non-specialist. *Nucleic Acids Research* **36**, W465–W469.
- Dubcovsky J, Maria GS, Epstein E, Luo MC, Dvořák J.** 1996. Mapping of the K⁺/Na⁺ discrimination locus *Kna1* in wheat. *Theoretical and Applied Genetics* **92**, 448–454.
- Dvořák J, Noaman MM, Goyal S, Gorham J.** 1994. Enhancement of the salt tolerance of *Triticum turgidum* L. by the *Kna1* locus transferred from the *Triticum aestivum* L. chromosome 4D by homeologous recombination. *Theoretical and Applied Genetics* **87**, 872–877.
- Epstein E.** 1972. *Mineral nutrition of plants: principles and perspectives*. New York: John Wiley.
- Garcia-deblás B, Senn ME, Bañuelos MA, Rodríguez-Navarro A.** 2003. Sodium transport and HKT transporters: the rice model. *The Plant Journal* **34**, 788–801.
- Gassmann W, Rubio F, Schroeder JI.** 1996. Alkali cation selectivity of the wheat root high-affinity potassium transporter HKT1. *The Plant Journal* **10**, 869–852.
- Geiger D, Scherzer S, Mumm P, et al.** 2009. Activity of guard cell anion channel SLAC1 is controlled by drought-stress signaling kinase-phosphatase pair. *Proceedings of the National Academy of Sciences, USA* **106**, 21425–21430.
- Gorham J, Hardy C, Wyn Jones RG, Joppa LR, Law CN.** 1987. Chromosomal location of a K/Na discrimination character in the D genome of wheat. *Theoretical and Applied Genetics* **74**, 584–588.
- Gorham J, Wyn Jones RG, Bristol A.** 1990. Partial characterization of the trait for enhanced K⁺-Na⁺ discrimination in the D genome of wheat. *Planta* **180**, 590–597.
- Haro R, Bañuelos MA, Senn ME, Barrero-Gil J, Rodríguez-Navarro A.** 2005. HKT1 mediates sodium uniport in roots. Pitfalls in the expression of HKT1 in yeast. *Plant Physiology* **139**, 1495–1506.
- Hauser F, Horie T.** 2010. A conserved primary salt tolerance mechanism mediated by HKT transporters: a mechanism for sodium exclusion and maintenance of high K⁺/Na⁺ ratio in leaves during salinity stress. *Plant, Cell & Environment* **33**, 552–565.
- Horie T, Brodsky DE, Costa A, Kaneko T, Lo Schiavo F, Katsuhara M, Schroeder JI.** 2011. K⁺ transport by the OsHKT2;4 transporter from rice with atypical Na⁺ transport properties and competition in permeation of K⁺ over Mg²⁺ and Ca²⁺ ions. *Plant Physiology* **156**, 1493–1507.
- Horie T, Costa A, Kim TH, et al.** 2007. Rice OsHKT2;1 transporter mediates large Na⁺ influx component into K⁺-starved roots for growth. *EMBO Journal* **26**, 3003–3014.
- Horie T, Yoshida K, Nakayama H, Yamada K, Oiki S, Shinmyo A.** 2001. Two types of HKT transporters with different properties of Na⁺ and K⁺ transport in *Oryza sativa*. *The Plant Journal* **27**, 129–138.
- Huang S, Spielmeier W, Lagudah ES, Munns R.** 2008. Comparative mapping of HKT genes in wheat, barley and rice, key determinants of Na⁺ transport and salt tolerance. *Journal of Experimental Botany* **59**, 927–937.
- Huang SB, Spielmeier W, Lagudah ES, James RA, Platten JD, Dennis ES, Munns R.** 2006. A sodium transporter (HKT7) is a candidate for *Nax1*, a gene for salt tolerance in durum wheat. *Plant Physiology* **142**, 1718–1727.

- Huson DH, Richter DC, Rausch C, Dezulian T, Franz M, Rupp R.** 2007. Dendroscope: an interactive viewer for large phylogenetic trees. *BMC Bioinformatics* **8**, 460.
- Jabnoun M, Espéout S, Mieulet D, et al.** 2009. Diversity in expression patterns and functional properties in the rice HKT transporter family. *Plant Physiology* **150**, 1955–1971.
- James RA, Blake C, Byrt CS, Munns R.** 2011. Major genes for Na⁺ exclusion, *Nax1* and *Nax2* (wheat *HKT1;4* and *HKT1;5*), decrease Na⁺ accumulation in bread wheat leaves under saline and waterlogged conditions. *Journal of Experimental Botany* **62**, 2939–2947.
- James RA, Blake C, Zwart AB, Hare RA, Rathjen AJ, Munns R.** 2012. Impact of ancestral wheat sodium exclusion genes *Nax1* and *Nax2* on grain yield of durum wheat on saline soils. *Functional Plant Biology* **39**, 609–618.
- James RA, Davenport RJ, Munns R.** 2006. Physiological characterization of two genes for Na⁺ exclusion in durum wheat, *Nax1* and *Nax2*. *Plant Physiology* **142**, 1537–1547.
- Jeanguenin L, Alcon C, Duby G, Boeglin M, Chérel I, Gaillard I, Zimmermann S, Sentenac H, Véry AA.** 2011. AtKC1 is a general modulator of *Arabidopsis* inward Shaker channel activity. *Plant Journal* **67**, 570–582.
- Kader MA, Seidel T, Goldack D, Lindberg S.** 2006. Expressions of *OsHKT1*, *OsHKT2*, and *OsVHA* are differentially regulated under NaCl stress in salt-sensitive and salt-tolerant rice (*Oryza sativa* L.) cultivars. *Journal of Experimental Botany* **57**, 4257–4268.
- Lin HX, Zhu MZ, Yano M, Gao JP, Liang ZW, Su WA, Hu ZH, Ren ZH, Chao DY.** 2004. QTLs for Na⁺ and K⁺ uptake of the shoots and roots controlling rice salt tolerance. *Theoretical and Applied Genetics* **108**, 253–260.
- Lindsay MP, Lagudah ES, Hare RA, Munns R.** 2004. A locus for sodium exclusion (*Nax1*), a trait for salt tolerance, mapped in durum wheat. *Functional Plant Biology* **31**, 1105–1114.
- Liu W, Fairbairn DJ, Reid RJ, Schachtman DP.** 2001. Characterization of two HKT1 homologues from *Eucalyptus camaldulensis* that display intrinsic osmosensing capability. *Plant Physiology* **127**, 283–294.
- Mäser P, Thomine S, Schroeder JI, et al.** 2001. Phylogenetic relationships within cation transporter families of *Arabidopsis*. *Plant Physiology* **126**, 1646–1667.
- Mian A, Oomen RJFJ, Isayenkov S, Sentenac H, Maathuis FJM, Véry AA.** 2011. Overexpression of an Na⁺- and K⁺-permeable HKT transporter in barley improves salt tolerance. *The Plant Journal* **68**, 468–479.
- Munns R, James RA, Xu B, et al.** 2012. Wheat grain yield on saline soils is improved by an ancestral Na transporter gene. *Nature Biotechnology* **30**, 360–366.
- Munns R, Tester M.** 2008. Mechanisms of salinity tolerance. *Annual Reviews of Plant Biology* **59**, 651–681.
- Olías R, Eljakaoui Z, Li J, Alvarez de Morales P, Marín-Manzano MC, Pardo JM, Belver A.** 2009. The plasma membrane Na⁺/H⁺ antiporter SOS1 is essential for salt tolerance in tomato and affects the partitioning of Na⁺ between plant organs. *Plant, Cell & Environment* **32**, 904–916.
- Oomen RJFJ, Benito B, Sentenac H, Rodríguez-Navarro A, Talón M, Véry AA, Domingo C.** 2012. HKT2;2/1, a K⁺-permeable transporter identified in a salt-tolerant rice cultivar through surveys of natural genetic polymorphism. *The Plant Journal* **71**, 750–762.
- Pardo JM, Cubero B, Leidi EO, Quintero FJ.** 2006. Alkali cation exchangers: roles in cellular homeostasis and stress tolerance. *Journal of Experimental Botany* **57**, 1181–1199.
- Platten JD, Cotsaftis O, Berthomieu P, et al.** 2006. Nomenclature for HKT transporters, key determinants of plant salinity tolerance. *Trends in Plant Sciences* **11**, 372–374.
- Ren ZH, Gao JP, Li LG, Cai XL, Huang W, Chao DY, Zhu MZ, Wang ZY, Luan S, Lin HX.** 2005. A rice quantitative trait locus for salt tolerance encodes a sodium transporter. *Nature Genetics* **37**, 1141–60.
- Rengasamy P.** 2006. World salinization with emphasis on Australia. *Journal of Experimental Botany* **57**, 1017–1023.
- Rodríguez-Rosales MP, Galvez FJ, Huertas R, Aranda MN, Baghour M, Cagnac O, Venema K.** 2009. Plant NHX cation/proton antiporters. *Plant Signaling & Behavior* **4**, 265–276.
- Rubio F, Gassmann W, Schroeder JI.** 1995. Sodium driven potassium uptake by the plant potassium transporter HKT1 and mutations conferring salt tolerance. *Science* **270**, 1660–1663.
- Rus A, Baxter I, Muthukumar B, Gustin J, Lahner B, Yakubova E, Salt DE.** 2006. Natural variants of AtHKT1 enhance Na⁺ accumulation in two wild populations of *Arabidopsis*. *PLoS Genetics* **2**, 1964–1973.
- Sassi A, Mieulet D, Khan I, Moreau B, Gaillard I, Sentenac H, Véry AA.** 2012. The rice monovalent cation transporter OshKT2;4: revisited ionic selectivity. *Plant Physiology* **160**, 498–510.
- Schulze LM, Britto DT, Li M, Kronzucker HJ.** 2012. A pharmacological analysis of high-affinity sodium transport in barley (*Hordeum vulgare* L.): a ²⁴Na⁺/⁴²K⁺ study. *Journal of Experimental Botany* **63**, 2479–2489.
- Shabala S, Cuin TA, Pottosin I.** 2007. Polyamines prevent NaCl-induced K⁺ efflux from pea mesophyll by blocking non-selective cation channels. *FEBS Letters* **581**, 1993–1999.
- Shi H, Quintero FJ, Pardo JM, Zhu JK.** 2002. The putative plasma membrane Na⁺/H⁺ antiporter SOS1 controls long-distance Na⁺ transport in plants. *Plant Cell* **14**, 465–477.
- Sunarpi, Horie T, Motoda J, et al.** 2005. Enhanced salt tolerance mediated by AtHKT1 transporter induced Na⁺ unloading from xylem vessels to xylem parenchyma cells. *The Plant Journal* **44**, 928–938.
- Uozumi N, Kim EJ, Rubio F, Yamaguchi T, Muto S, Tsuboi A, Bakker EP, Nakamura T, Schroeder JI.** 2000. The *Arabidopsis* HKT1 gene homolog mediates inward Na⁺ currents in *Xenopus laevis* oocytes and Na⁺ uptake in *Saccharomyces cerevisiae*. *Plant Physiology* **122**, 1249–1259.
- Véry AA, Gaymard F, Bosseux C, Sentenac H, Thibaud JB.** 1995. Expression of a cloned plant K⁺ channel in *Xenopus* oocytes: analysis of macroscopic currents. *The Plant Journal* **7**, 321–332.
- Wu SJ, Ding L, Zhu JK.** 1996. SOS1, a genetic locus essential for salt tolerance and potassium acquisition. *Plant Cell* **8**, 617–627.
- Zhao F, Song C-P, He J, Zhu H.** 2007. Polyamines improve K⁺/Na⁺ homeostasis in barley seedlings by regulating root ion channel activities. *Plant Physiology* **147**, 1061–1072.